

V&V Reference Report

L2 ASCDS Version : 7.6.7.1

Observation 5435 - L2 Version 002
Chandra X-Ray Center

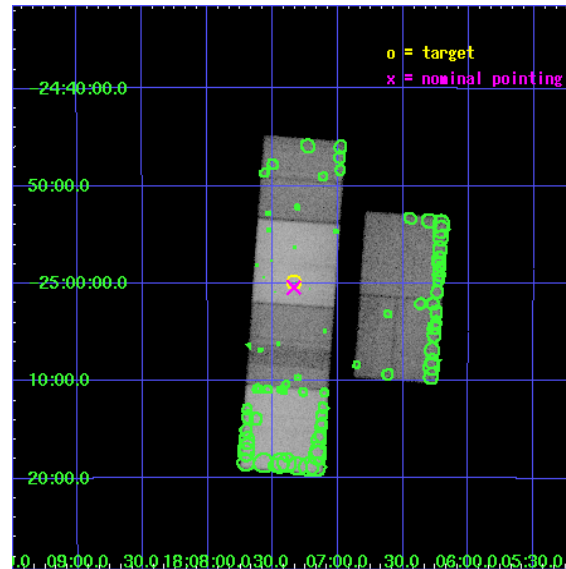
L2 Processing Date : Mar 15 2006

Contents

1	Front	2
2	OBI	3
2.1	OBI	3
2.1.1	Images	3
2.1.2	Bias	3
2.1.3	Parameters	4
2.1.4	Events	4
2.2	Compared Parameters	5
2.3	Aspect	6
2.4	Star Slots	9
2.4.1	Slot 3	9
2.4.2	Slot 4	10
2.4.3	Slot 5	11
2.4.4	Slot 6	12
2.4.5	Slot 7	13
2.5	FID Slots	14
2.5.1	Slot 0	14
2.5.2	Slot 1	15
2.5.3	Slot 2	16
3	Point Sources	17
A	Summary	18
A.1	Status	18
A.2	Comments	18

1 Front

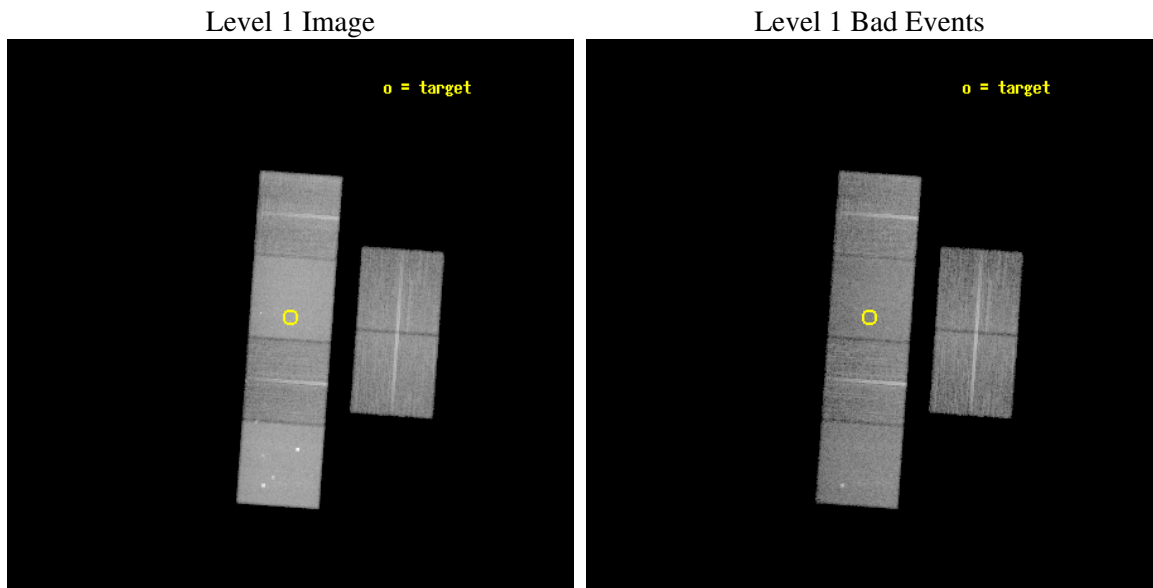
seq_num	300151
obs_id	5435
title	A Uniform Study of Globular Cluster X-ray Sources: the Keys to Cluster Dynamical Evolution
observer	Prof. Walter Lewin
object	NGC 6544
dtcycle	0
cycle	P
ra_targ	271.835833
dec_targ	-24.9975
ra_nom	271.83470454485
dec_nom	-25.007129766766
roll_nom	274.09905131857
revision	2
ontime	16486.399938583
livetime	16277.639215643
ontime2	16483.158948362
ontime3	16486.399938583
ontime5	16486.399938583
ontime6	16486.399938583
ontime7	16486.399938583
ontime8	16486.399938583
l2events	459580



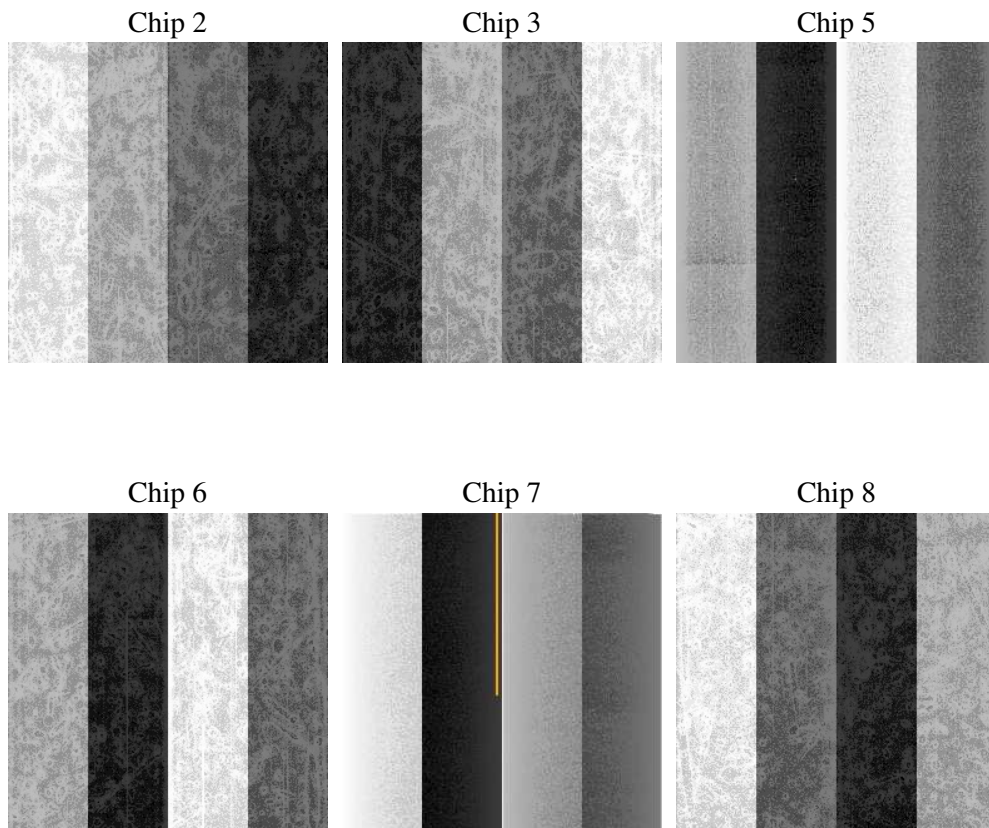
2 OBI

2.1 OBI

2.1.1 Images



2.1.2 Bias



2.1.3 Parameters

obi_num	0
ascdsver	7.6.7.1
caldsver	3.2.1
date	2006-03-15T16:10:50
revision	2

sched_exp_time	16309.472000
ontime	16717.11987564
ontime2	16713.87886548
ontime3	16717.119855702
ontime5	16717.11987564
ontime6	16717.119855702
ontime7	16717.11987564
ontime8	16717.119855702
l1events	1216424

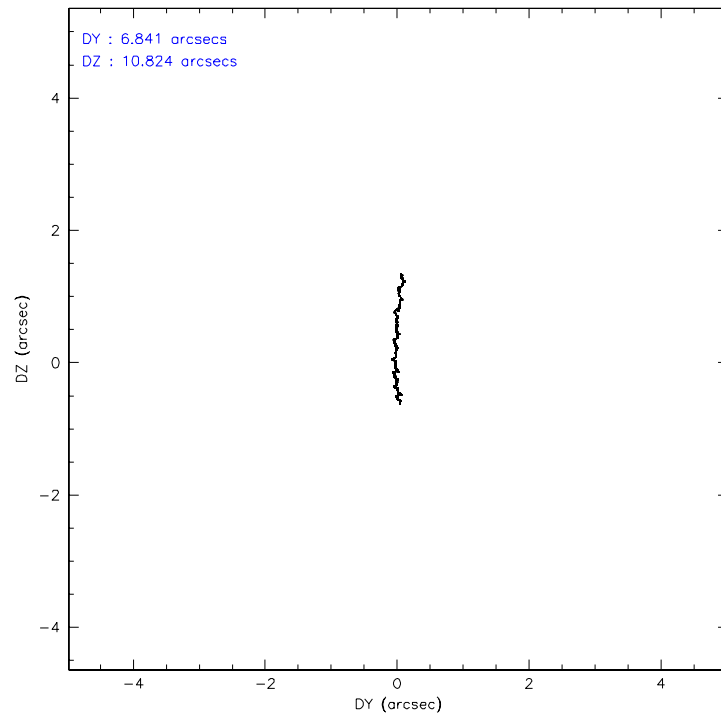
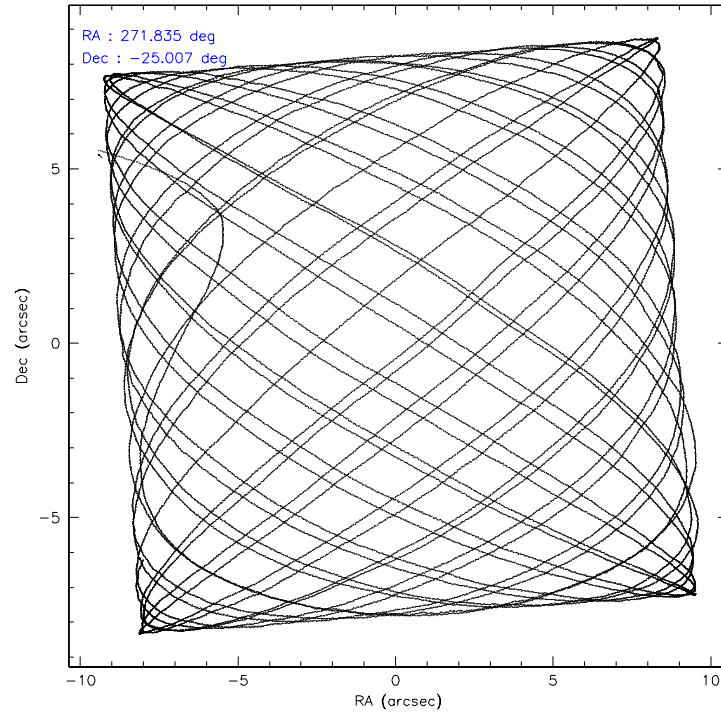
2.1.4 Events

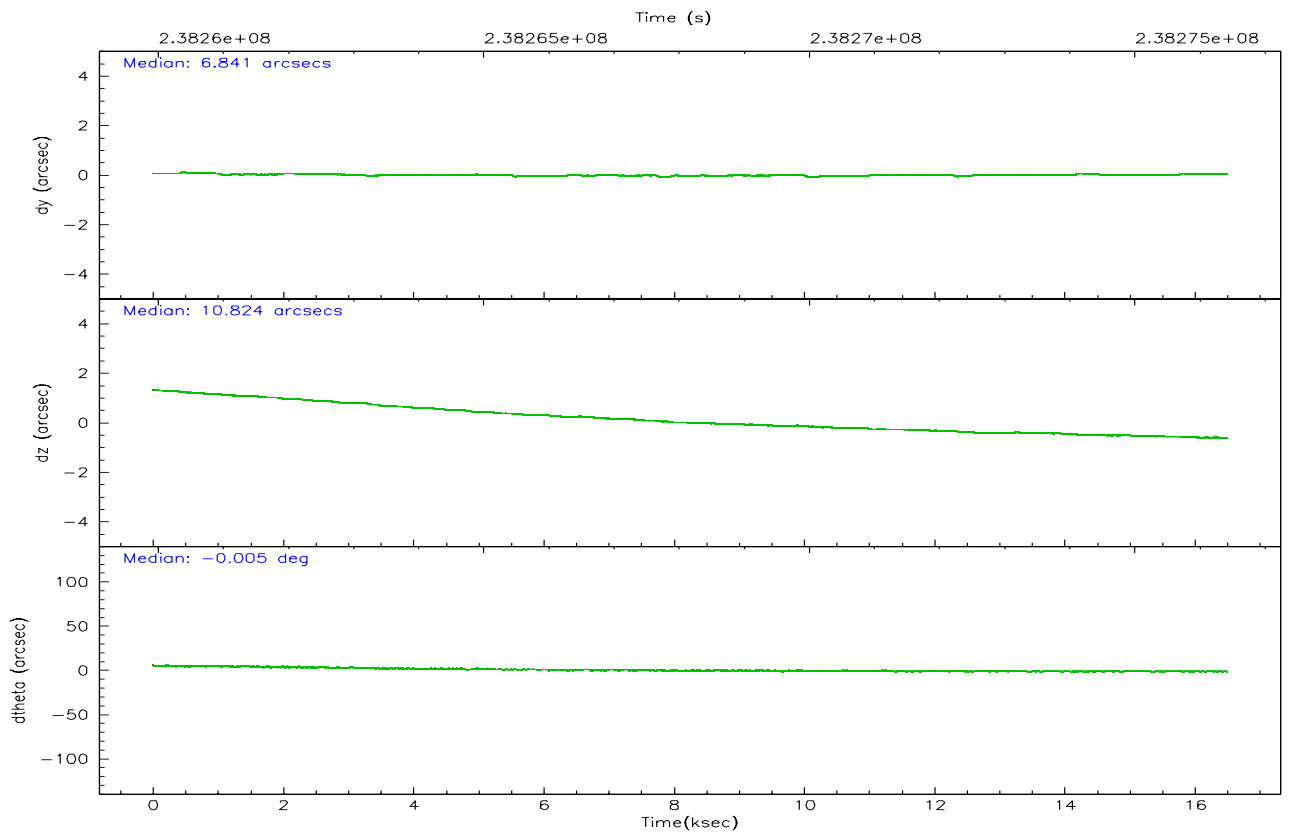
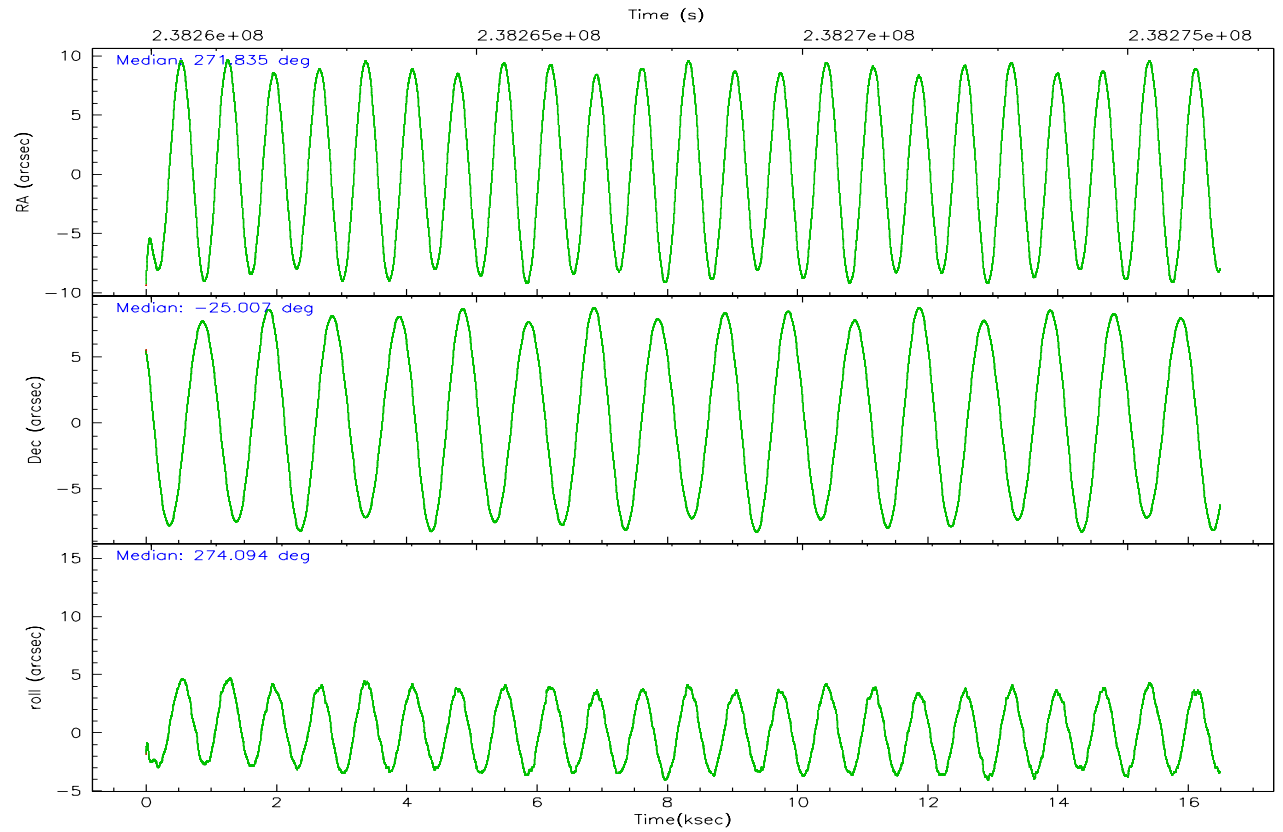
	ccd 2	ccd 3	ccd 5	ccd 6	ccd 7	ccd 8		ccd 2	ccd 3	ccd 5	ccd 6	ccd 7	ccd 8
level 1 events	156326	153374	278661	166173	265069	196821	grade 0 events	28040	28088	16348	32676	11207	38572
rejected events	115099	111772	121407	116652	120441	127703		17%	18%	5%	19%	4%	19%
rejected %	73%	72%	43%	70%	45%	64%	grade 1 events	167	189	232	167	131	224
								0%	0%	0%	0%	0%	0%
							grade 2 events	5988	5888	49993	8309	31937	11890
								3%	3%	17%	5%	12%	6%
							grade 3 events	2087	2211	4493	2374	7437	4740
								1%	1%	1%	1%	2%	2%
							grade 4 events	2084	2235	4311	2218	7191	4430
								1%	1%	1%	1%	2%	2%
							grade 5 events	5229	5729	10432	6049	11784	8022
								3%	3%	3%	3%	4%	4%
							grade 6 events	3306	3418	83389	4213	87826	10032
								2%	2%	29%	2%	33%	5%
							grade 7 events	109425	105616	109463	110167	107556	118911
								69%	68%	39%	66%	40%	60%

2.2 Compared Parameters

Parameter	Planned	Actual	Parameter	Planned	Actual
Instrument	ACIS	ACIS	Obspar format version number	6	6
Detector	ACIS-235678	ACIS-235678	Obspar file type	PREDICTED	ACTUAL
Grating	NONE	NONE	Obspar update status	NONE	UPDATED
Data mode	FAINT	FAINT	On-chip summing requested	N	N
Observation mode	POINTING	POINTING	Subarray requested	NONE	NONE
Pointing RA	271.817537	271.8347045448476	Alternating exposures requested	N	N
Pointing Dec	-24.984779	-25.00712976676601	Primary exposure time	0.000000	3.2
Pointing Roll	273.935167	274.0990513185732			
SIM focus pos (mm)	-0.684267	-0.6828225247311905			
SIM defocus (mm)	0	0.001444936568705701			
SIM translation stage pos (mm)	-190.132523	-190.1425803651734			
SIM translation stage offset (mm)	0	0.01005778216563158			
Observation start time	238260101.184000	238258861.86205			
Observation start date	2005-07-20T15:20:37	2005-07-20T15:01:01			
Observation end time	238276410.184000	238276638.95036			
Observation end date	2005-07-20T19:52:26	2005-07-20T19:57:18			
Read mode	TIMED	TIMED			

2.3 Aspect



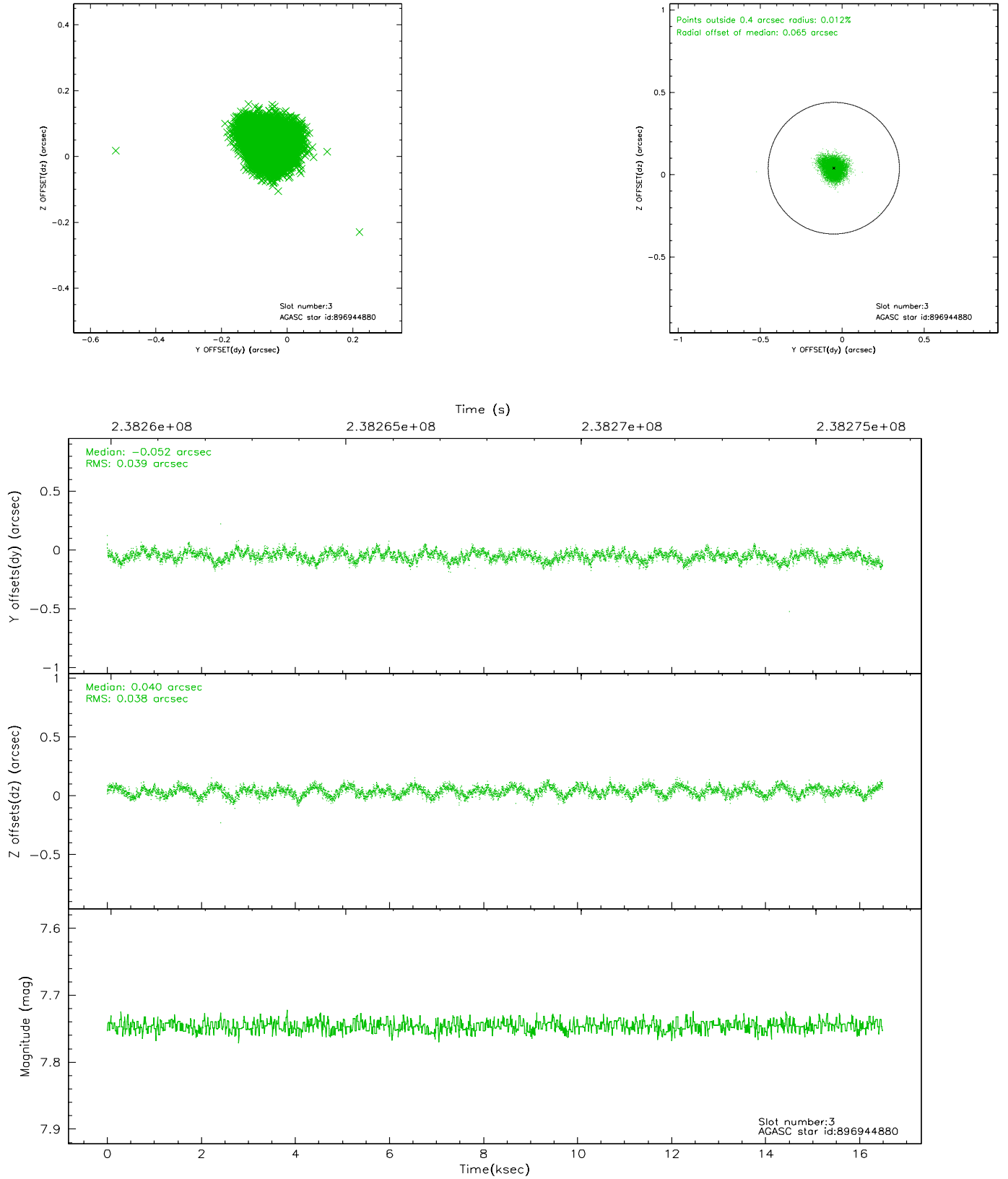


Slot Statistics

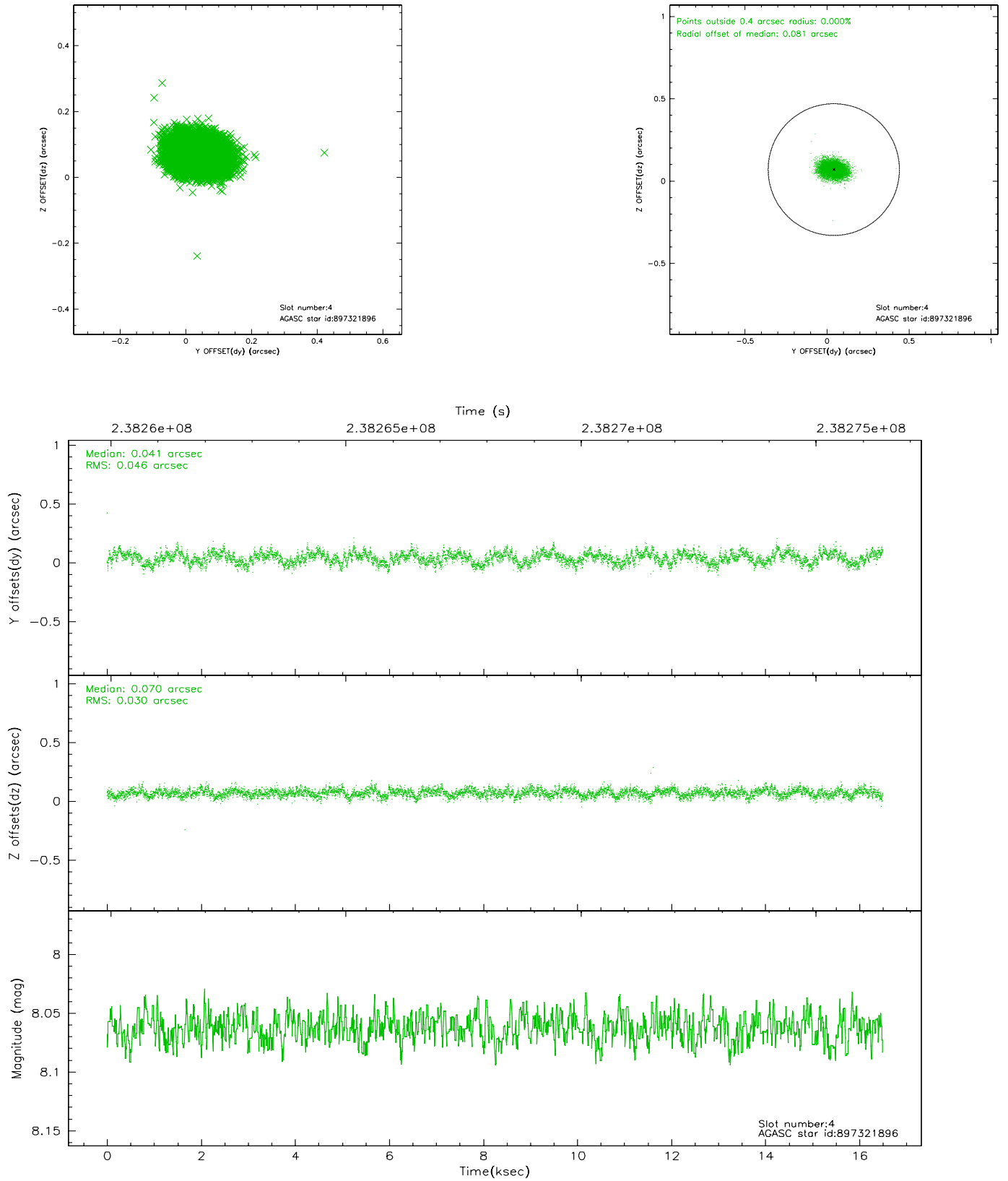
slot	status	id	mag	n_pts	med_dy	med_dz	dr1	dr2	ra	dec	mean_y	mean_z
0	FID	ACIS-S-1	7.19	4024	-0.008	-0.045	0.024	0.033	0.000000	0.000000	936.43	-1727.87
1	FID	ACIS-S-4	7.21	4024	0.027	0.037	0.017	0.025	0.000000	0.000000	2154.01	176.10
2	FID	ACIS-S-5	7.23	4023	-0.047	0.017	0.012	0.019	0.000000	0.000000	-1812.15	169.97
3	GUIDE	896944880	7.75	8046	-0.052	0.040	0.059	0.092	272.225160	-24.357987	-2157.50	1488.48
4	GUIDE	897321896	8.06	8046	0.041	0.070	0.058	0.095	271.639414	-25.476837	1728.14	-698.30
5	GUIDE	897327936	7.20	8046	-0.172	-0.011	0.051	0.085	271.293962	-24.398569	-2219.62	-1568.10
6	GUIDE	897328728	7.32	8046	0.156	-0.053	0.066	0.110	271.202031	-25.605697	2097.75	-2147.19
7	GUIDE	897465768	7.84	8041	0.030	-0.040	0.050	0.084	272.486247	-25.285827	1236.25	2096.83

2.4 Star Slots

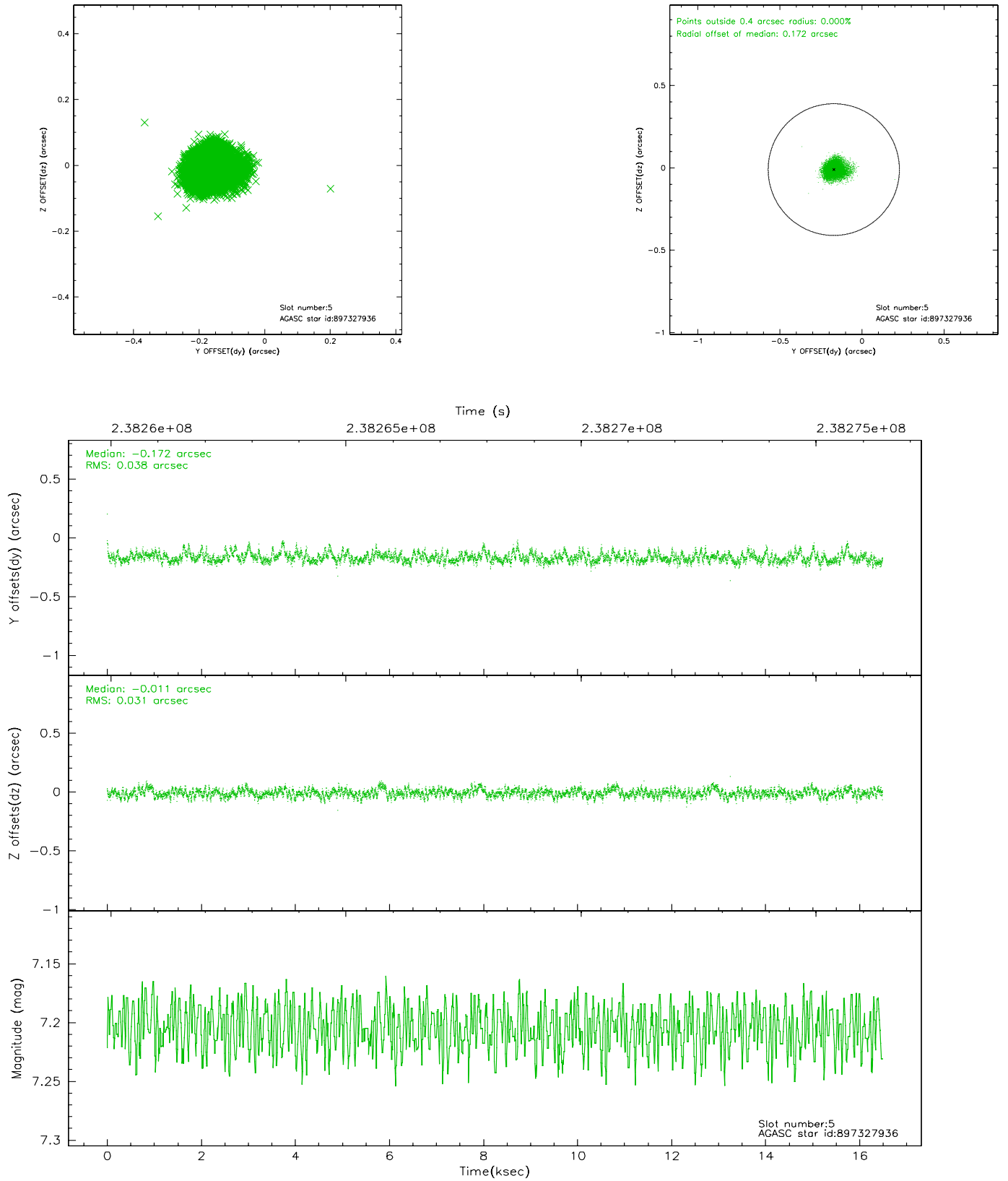
2.4.1 Slot 3



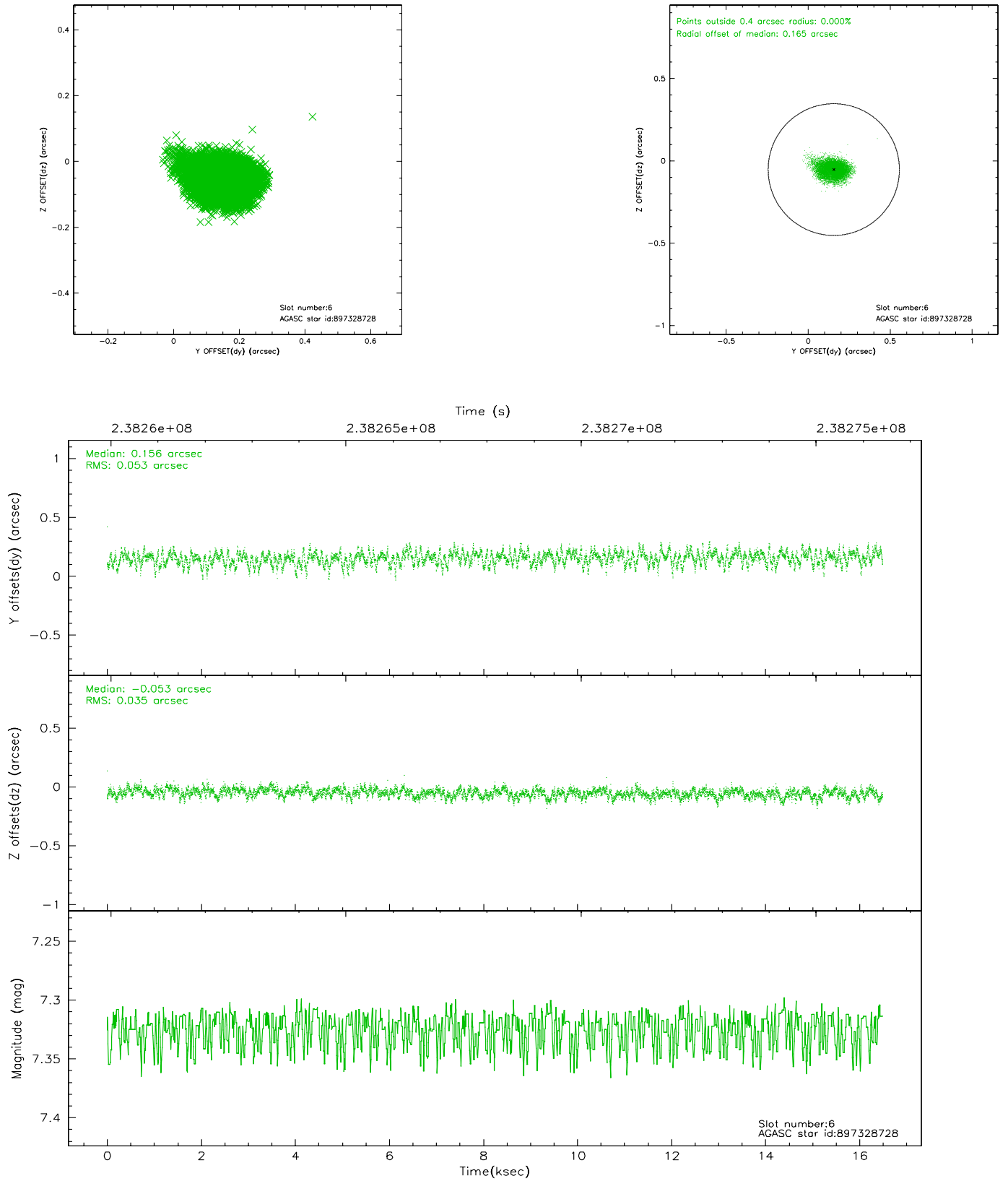
2.4.2 Slot 4



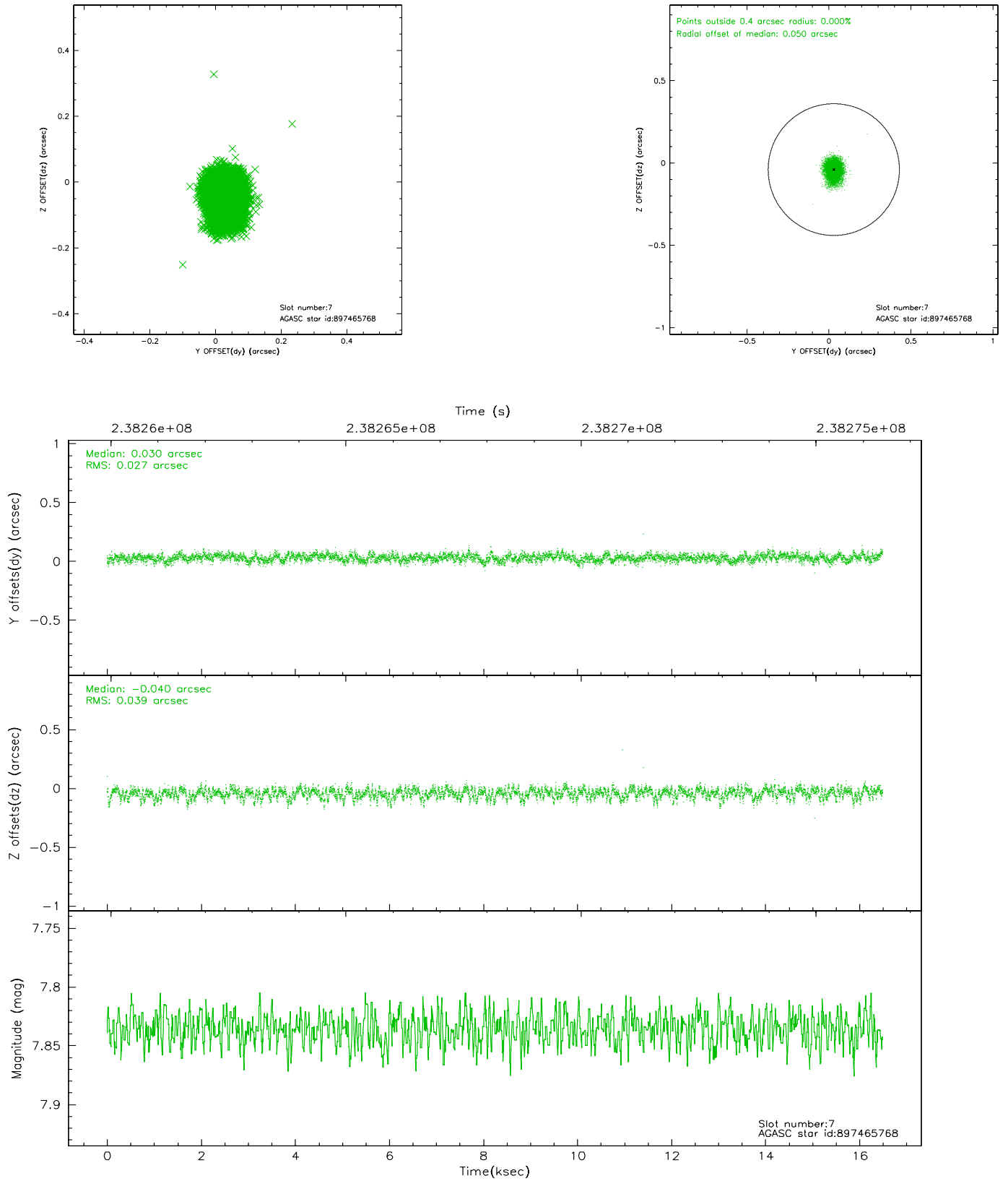
2.4.3 Slot 5



2.4.4 Slot 6

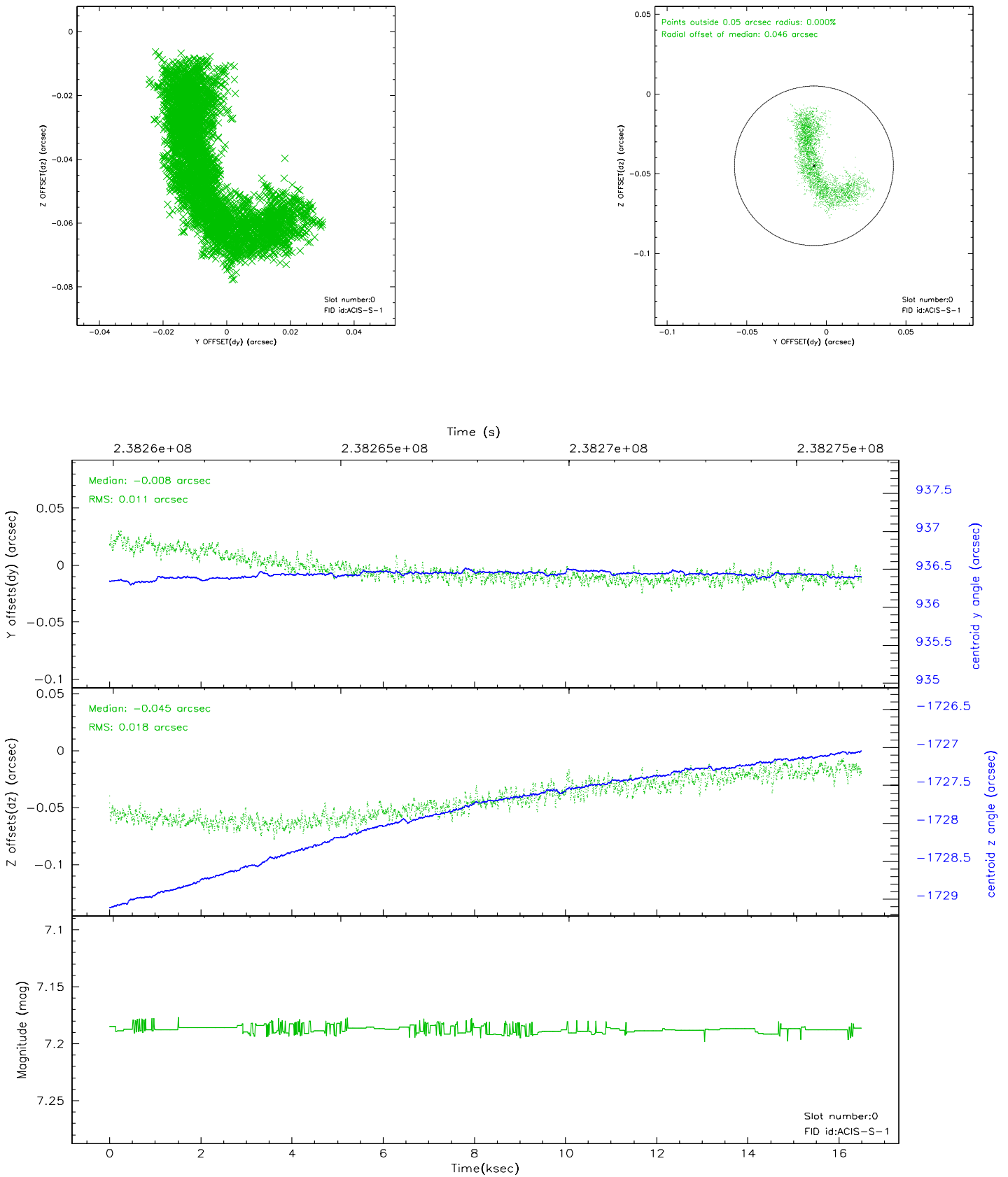


2.4.5 Slot 7

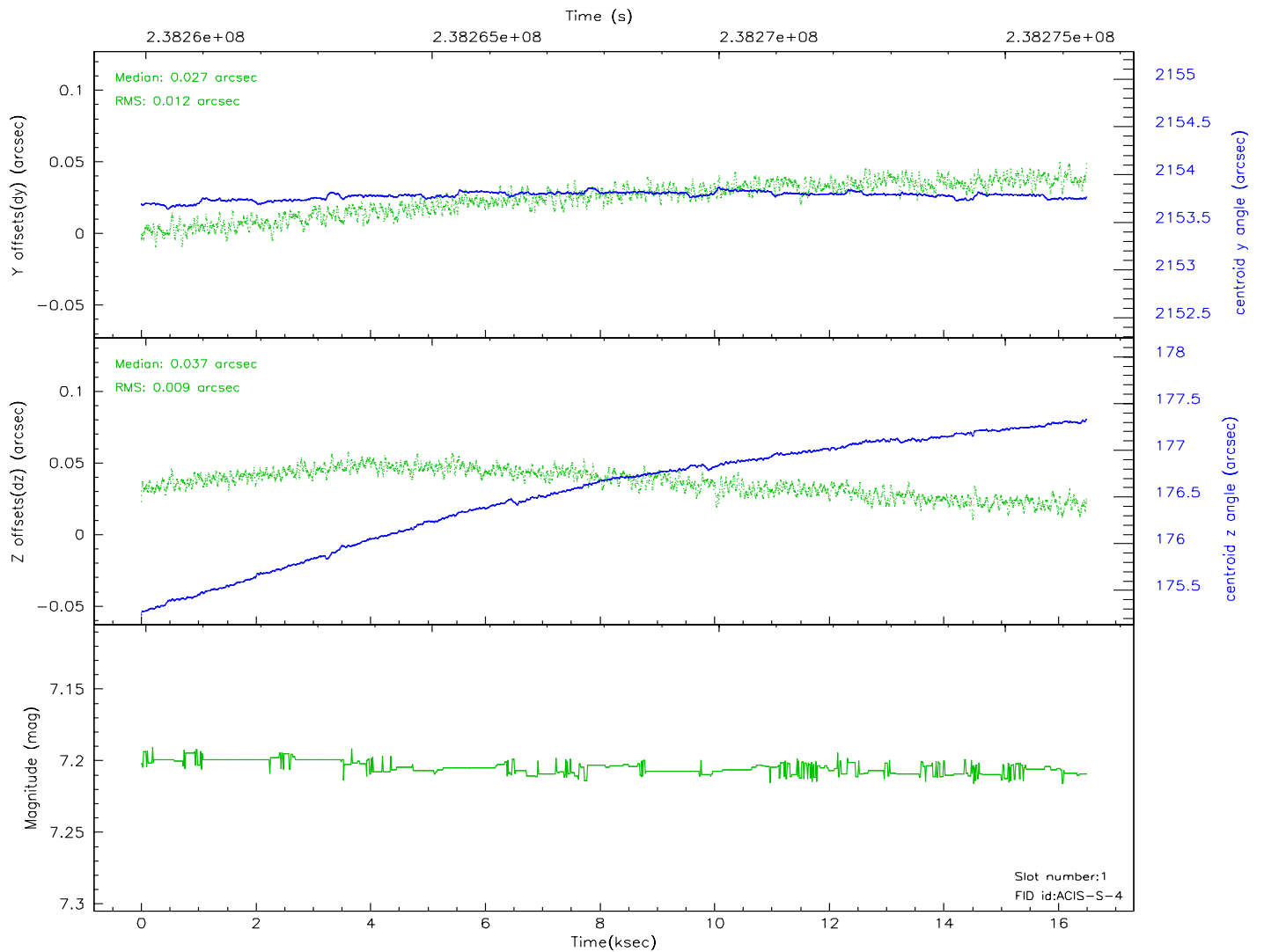
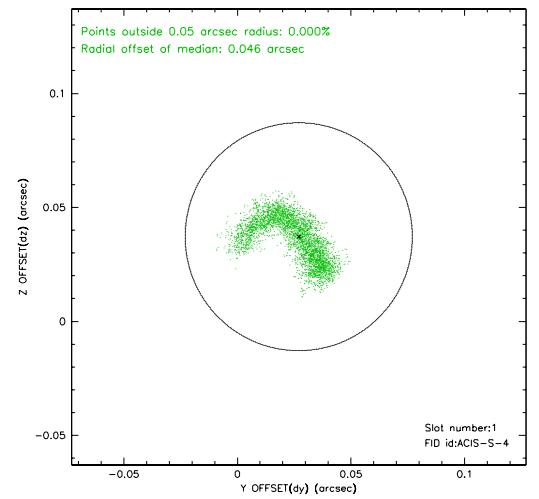
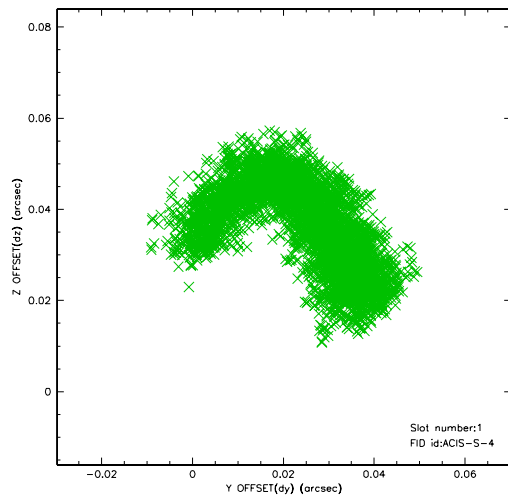


2.5 FID Slots

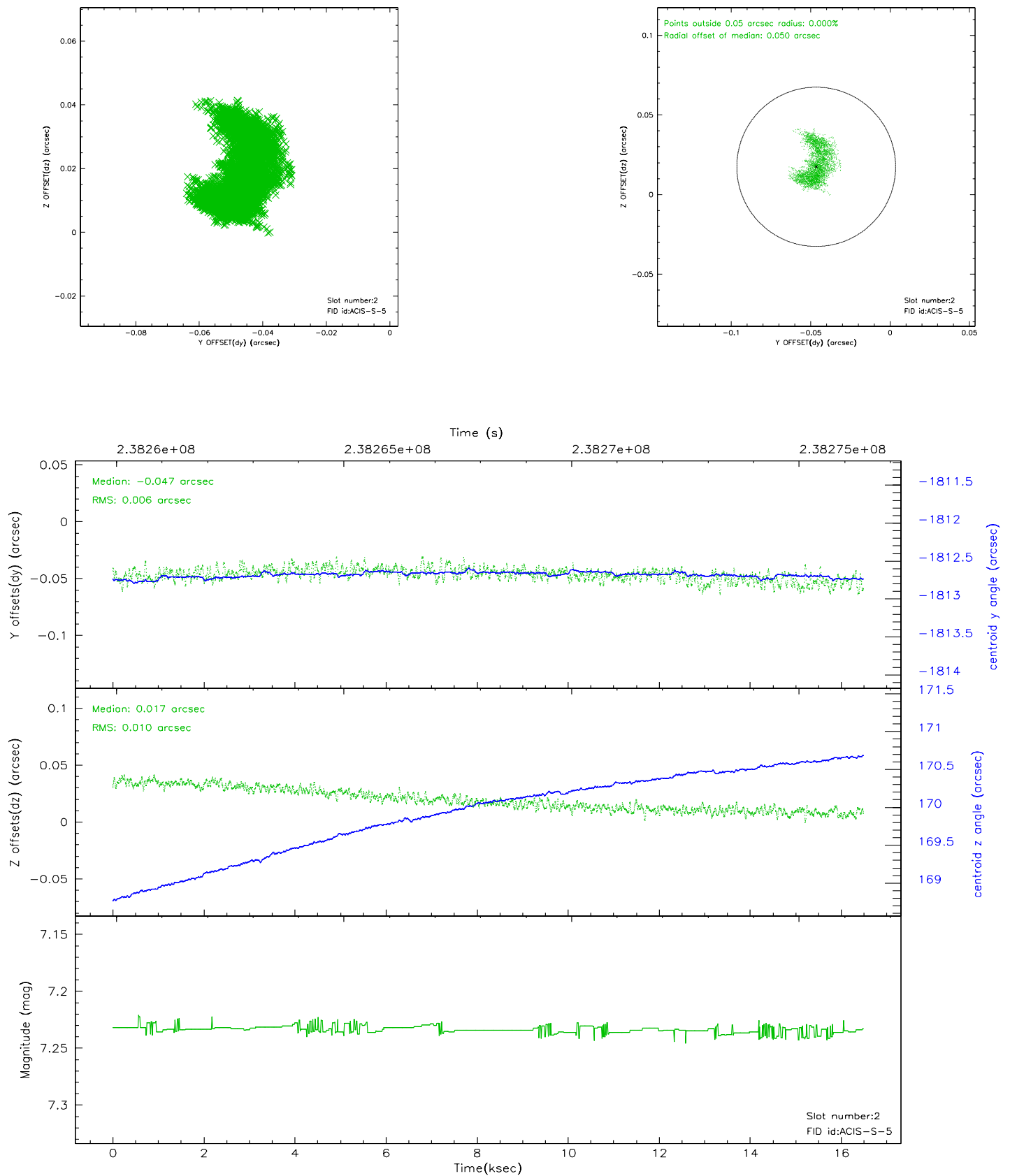
2.5.1 Slot 0



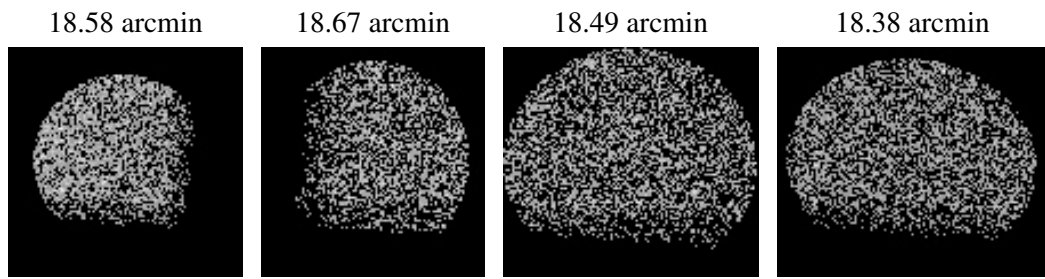
2.5.2 Slot 1



2.5.3 Slot 2



3 Point Sources



A Summary

A.1 Status

V&V Scientist	Beth Sundheim
V&V Date (YYYY-MM-DD)	2006.03.15
V&V Edition	1
V&V Disposition and Status	OK
V&V Charge Time	16.48639

A.2 Comments