

V&V Reference Report

L2 ASCDS Version : 10.1.1

Observation 53185 - L2 Version 1
Chandra X-Ray Center

L2 Processing Date : Dec 3 2013

Contents

1	Front	2
2	OBI	3
2.1	OBI	3
2.1.1	Images	3
2.1.2	Bias	3
2.1.3	Parameters	4
2.1.4	Events	4
2.2	Compared Parameters	5
2.3	Star Slots	6
2.4	FID Slots	6
A	Summary	7
A.1	Status	7
A.2	Comments	7

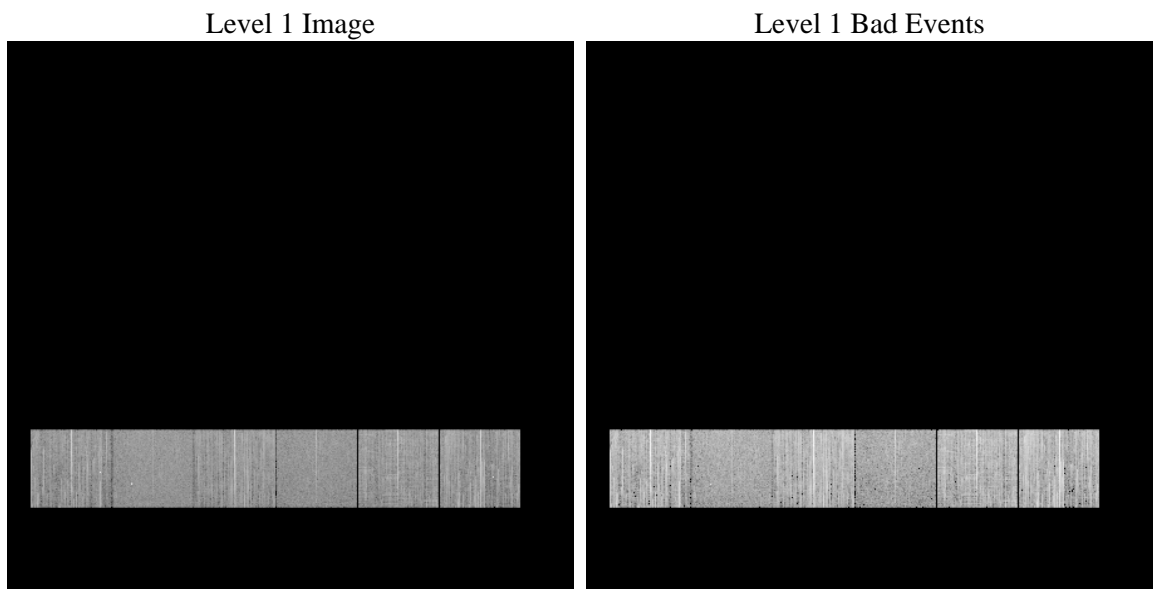
1 Front

seq_num	 	Sequence number
obs_id	53185	Observation id
title	ACIS-456789 diagnostics	Proposal title
observer	CHANDRA engineering request/realtime commanding	Principal investig
object	 	Source name
dtcycle	0	
cycle	P	events from which exps? Prim/Second/Both
ra_targ	0.0	Observer's specified target RA [deg]
dec_targ	0.0	Observer's specified target Dec [deg]
ra_nom	101.99233860225	Nominal RA [deg]
dec_nom	15.02780795983	Nominal Dec [deg]
roll_nom	72.174452448484	Nominal Roll [deg]
revision	1	Processing version of data
ontime	5765.659725368	Sum of GTIs [s]
livetime	5692.6514702619	Livetime [s]
ontime4	5765.5366053581	Sum of GTIs [s]
ontime5	5765.6186853647	Sum of GTIs [s]
ontime6	5765.5776453614	Sum of GTIs [s]
ontime7	5765.659725368	Sum of GTIs [s]
ontime8	5765.4955653548	Sum of GTIs [s]
ontime9	5765.7007653713	Sum of GTIs [s]
l2events	149393	Number of level 2 events

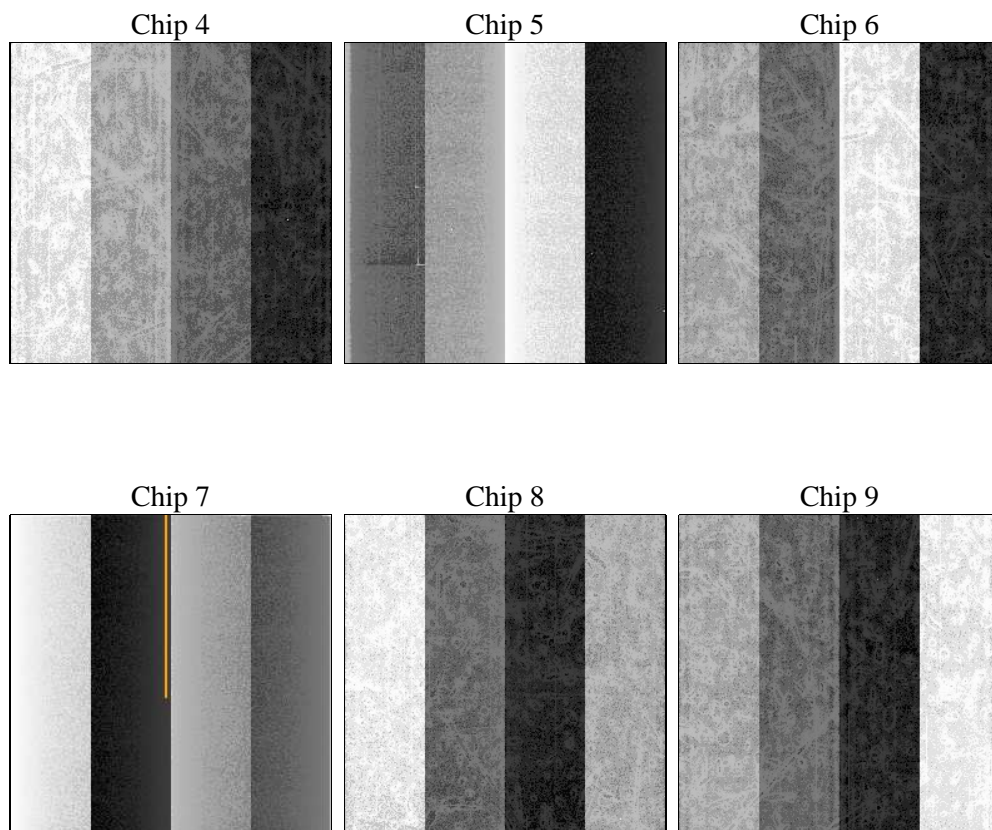
2 OBI

2.1 OBI

2.1.1 Images



2.1.2 Bias



2.1.3 Parameters

obi_num	0	Obi number	sched_exp_time	0.0	[s] Scheduled observation exposure time
ascdsver	10.1.1	Processing system revision	ontime	5765.659725368	Sum of GTIs [s]
caldsver	4.5.9	 	ontime4	5765.5366053581	Sum of GTIs [s]
date	2013-12-03T18:39:48	Date and time of file creation	ontime5	5765.6186853647	Sum of GTIs [s]
revision	1	Processing version of data	ontime6	5765.5776453614	Sum of GTIs [s]
			ontime7	5765.659725368	Sum of GTIs [s]
			ontime8	5765.4955653548	Sum of GTIs [s]
			ontime9	5765.7007653713	Sum of GTIs [s]
			l1events	573981	Number of level 1 events

2.1.4 Events

	ccd 4	ccd 5	ccd 6	ccd 7	ccd 8	ccd 9		ccd 4	ccd 5	ccd 6	ccd 7	ccd 8	ccd 9
level 1 events	95364	86709	102585	81443	101762	106118	grade 0 events	11435	3456	10089	5380	12070	11040
rejected events	74541	48037	81680	44274	75250	84988		11%	3%	9%	6%	11%	10%
rejected %	78%	55%	79%	54%	73%	80%	grade 1 events	73	88	28	49	59	54
								0%	0%	0%	0%	0%	0%
							grade 2 events	3749	14485	4450	9108	5393	3946
								3%	16%	4%	11%	5%	3%
							grade 3 events	1449	1516	1411	3017	2064	1362
								1%	1%	1%	3%	2%	1%
							grade 4 events	1436	1290	1348	2922	1976	1353
								1%	1%	1%	3%	1%	1%
							grade 5 events	2008	4059	2050	4915	2716	2376
								2%	4%	1%	6%	2%	2%
							grade 6 events	2754	17925	3607	16742	5009	3429
								2%	20%	3%	20%	4%	3%
							grade 7 events	72460	43890	79602	39310	72475	82558
								75%	50%	77%	48%	71%	77%

2.2 Compared Parameters

Parameter	Planned	Actual	Parameter	Planned	Actual
Instrument	ACIS	ACIS	Obspar format version number	7	7
Detector	ACIS-456789	ACIS-456789	Obspar file type	PREDICTED	ACTUAL
Grating	NONE	NONE	Obspar update status	NONE	UPDATED
Data mode	FAINT	FAINT	Number of optional ACIS chips dropped	0	0
Observation mode	SECONDARY	SECONDARY	On-chip summing requested	N	N
[deg] Pointing RA	0	101.9923386022475	Subarray requested	NONE	NONE
[deg] Pointing Dec	0	15.02780795983043	Alternating exposures requested	N	N
[deg] Pointing Roll	0.0	72.17445244848417	[s] Primary exposure time	3.2	3.2
[mm] SIM focus pos	-1.429586	-1.428180813131781			
[mm] SIM defocus	0.1037507710433287	0.1051558262725154			
[mm] SIM translation stage pos	250.455976	250.466033080201			
[mm] SIM translation stage offset	0	-0.01005468664627074			
[s] Observation start time (MET)	502443369.607963	502443368.58296			
Observation start date	2013-12-03T07:36:10	2013-12-03T07:36:08			
[s] Observation end time (MET)	502451032.508383	502451031.48338			
Observation end date	2013-12-03T09:43:53	2013-12-03T09:43:51			
Read mode	TIMED	TIMED			

2.3 Star Slots

2.4 FID Slots

A Summary

A.1 Status

V&V Scientist	Jen Lauer
V&V Date (YYYY-MM-DD)	2013.12.03
V&V Edition	1
V&V Disposition and Status	OK
V&V Charge Time	5.765659725368

A.2 Comments