

V&V Reference Report

L2 ASCDS Version : 10.2.1

Observation 52885 - L2 Version 2
Chandra X-Ray Center

L2 Processing Date : Apr 2 2014

Contents

1	Front	2
2	OBI	3
2.1	OBI	3
2.1.1	Images	3
2.1.2	Bias	3
2.1.3	Parameters	4
2.1.4	Events	4
2.2	Compared Parameters	5
2.3	Star Slots	6
2.4	FID Slots	6
A	Summary	7
A.1	Status	7
A.2	Comments	7

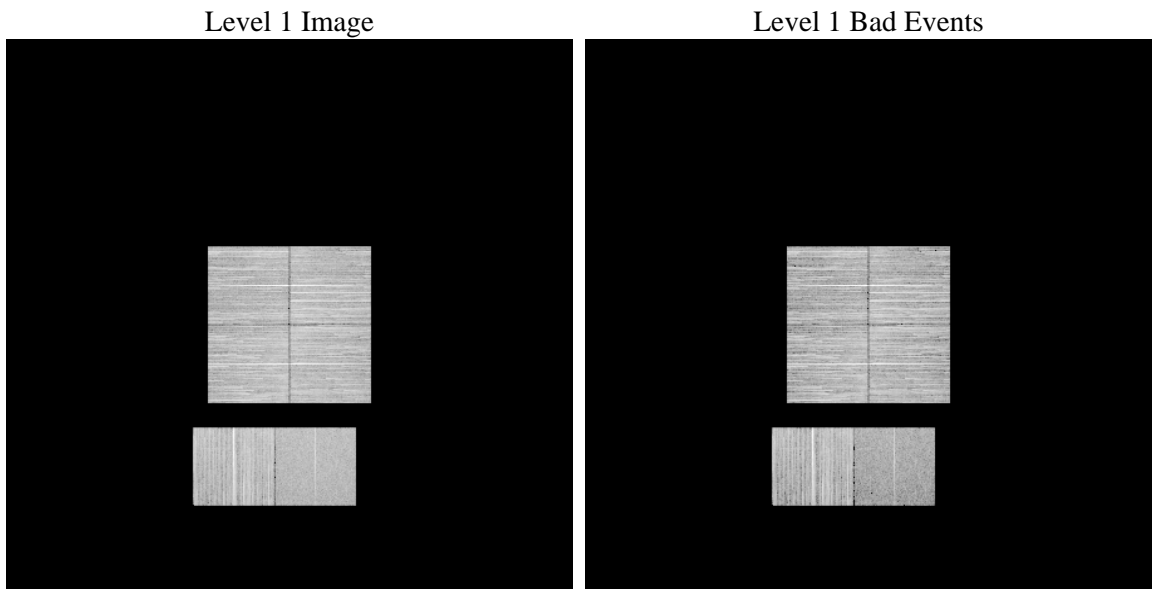
1 Front

seq_num	 	Sequence number
obs_id	52885	Observation id
title	ACIS-012367 diagnostics	Proposal title
observer	CHANDRA engineering request/realtime commanding	Principal investig
object	 	Source name
dtycle	0	
cycle	P	events from which exps? Prim/Second/Both
ra_targ	0.0	Observer's specified target RA [deg]
dec_targ	0.0	Observer's specified target Dec [deg]
ra_nom	0.034888424797828	Nominal RA [deg]
dec_nom	55.020592349636	Nominal Dec [deg]
roll_nom	12.898390766857	Nominal Roll [deg]
revision	2	Processing version of data
ontime	8290.0662989616	Sum of GTIs [s]
livetime	8185.0924878056	Livetime [s]
ontime0	8290.0252589583	Sum of GTIs [s]
ontime1	8289.984218955	Sum of GTIs [s]
ontime2	8289.9431789517	Sum of GTIs [s]
ontime3	8290.1073389649	Sum of GTIs [s]
ontime6	8289.9021389484	Sum of GTIs [s]
ontime7	8290.0662989616	Sum of GTIs [s]
l2events	177121	Number of level 2 events

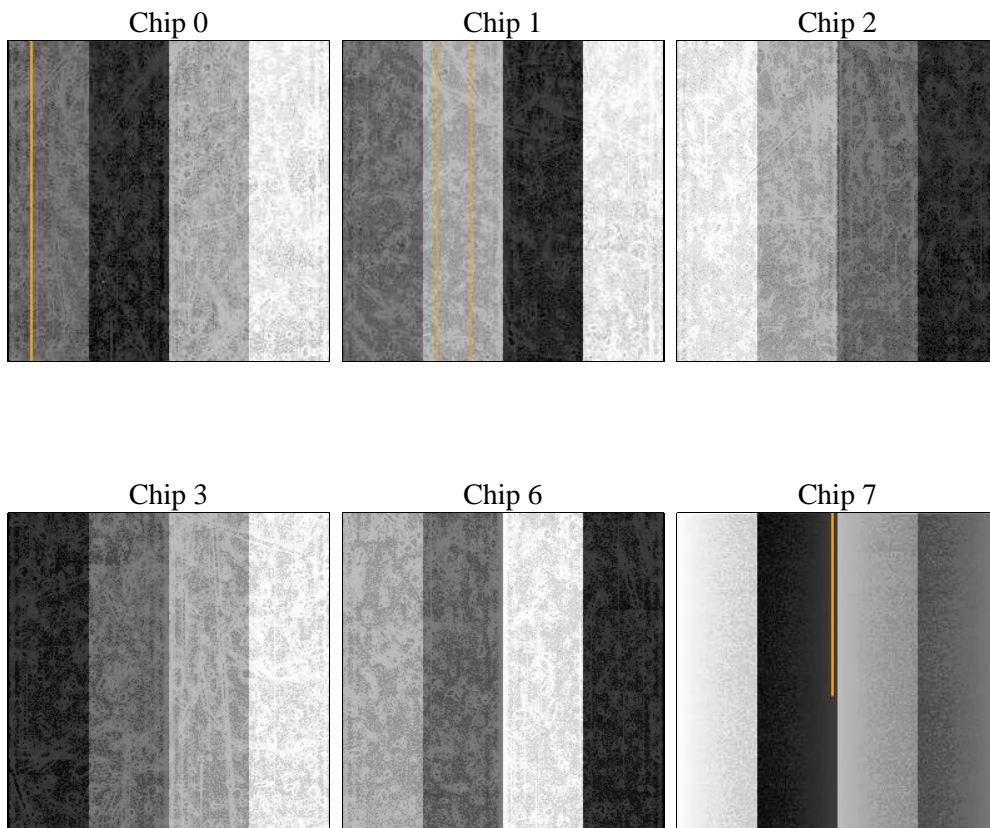
2 OBI

2.1 OBI

2.1.1 Images



2.1.2 Bias



2.1.3 Parameters

obi_num	0	Obi number	sched_exp_time	0.0	[s] Scheduled observation exposure time
ascdsver	10.2.1	Processing system revision	ontime	8290.0662989616	Sum of GTIs [s]
caldsver	4.6.1	 	ontime0	8290.0252589583	Sum of GTIs [s]
date	2014-04-02T20:26:01	Date and time of file creation	ontime1	8289.984218955	Sum of GTIs [s]
revision	2	Processing version of data	ontime2	8289.9431789517	Sum of GTIs [s]
			ontime3	8290.1073389649	Sum of GTIs [s]
			ontime6	8289.9021389484	Sum of GTIs [s]
			ontime7	8290.0662989616	Sum of GTIs [s]
			l1events	840068	Number of level 1 events

2.1.4 Events

	ccd 0	ccd 1	ccd 2	ccd 3	ccd 6	ccd 7		ccd 0	ccd 1	ccd 2	ccd 3	ccd 6	ccd 7
level 1 events	133646	146556	149319	144079	148571	117897	grade 0 events	13624	13066	13818	13904	13677	7311
rejected events	106710	119578	122550	116822	120598	65824		10%	8%	9%	9%	9%	6%
rejected %	79%	81%	82%	81%	81%	55%	grade 1 events	82	68	83	88	59	84
								0%	0%	0%	0%	0%	0%
							grade 2 events	5428	5771	5170	5230	5797	12876
								4%	3%	3%	3%	3%	10%
							grade 3 events	1804	1834	1913	1995	1756	4269
								1%	1%	1%	1%	1%	3%
							grade 4 events	1761	1797	1801	1995	1836	4191
								1%	1%	1%	1%	1%	3%
							grade 5 events	2691	2757	2585	3112	2912	7302
								2%	1%	1%	2%	1%	6%
							grade 6 events	4319	4510	4067	4133	4907	23426
								3%	3%	2%	2%	3%	19%
							grade 7 events	103937	116753	119882	113622	117627	58438
								77%	79%	80%	78%	79%	49%

2.2 Compared Parameters

Parameter	Planned	Actual	Parameter	Planned	Actual
Instrument	ACIS	ACIS	Obspar format version number	7	7
Detector	ACIS-012367	ACIS-012367	Obspar file type	PREDICTED	ACTUAL
Grating	NONE	NONE	Obspar update status	NONE	UPDATED
Data mode	FAINT	FAINT	Number of optional ACIS chips dropped	0	0
Observation mode	SECONDARY	SECONDARY	On-chip summing requested	N	N
[deg] Pointing RA	0	0.03488842479782761	Subarray requested	NONE	NONE
[deg] Pointing Dec	0	55.02059234963635	Alternating exposures requested	N	N
[deg] Pointing Roll	0.0	12.89839076685696	[s] Primary exposure time	3.2	3.2
[mm] SIM focus pos	-1.429586	-1.428180813131781			
[mm] SIM defocus	0.1037507710433287	0.1051558262725154			
[mm] SIM translation stage pos	250.455976	250.466033080201			
[mm] SIM translation stage offset	0	-0.01005468664627074			
[s] Observation start time (MET)	512692876.121686	512692875.09669			
Observation start date	2014-03-31T22:41:16	2014-03-31T22:41:15			
[s] Observation end time (MET)	512709858.322622	512709857.29762			
Observation end date	2014-04-01T03:24:18	2014-04-01T03:24:17			
Read mode	TIMED	TIMED			

2.3 Star Slots

2.4 FID Slots

A Summary

A.1 Status

V&V Scientist	Jen Lauer
V&V Date (YYYY-MM-DD)	2014.04.03
V&V Edition	1
V&V Disposition and Status	OK
V&V Charge Time	8.2900662989616

A.2 Comments

A spatial region of the original bias map for CCD = 0 suffered from anomalously high data values. Pixels in the event data that were bias-corrected by one of the original affected bias pixels may have an apparent energy shift. While the change in energy is expected to be small (~ 20 eV), it depends on many parameters that have not yet been fully explored for this bias anomaly. The bias map for CCD = 0 has been reconstructed for this processing to remove this anomaly using scaled data from a comparable bias map from another observation. The pixels affected by the anomaly are bounded by chip coords:
(731,387),(748,387),(748,949),(731,949)