

V&V Reference Report

L2 ASCDS Version : 7.6.7.2

Observation 4985 - L2 Version 001
Chandra X-Ray Center

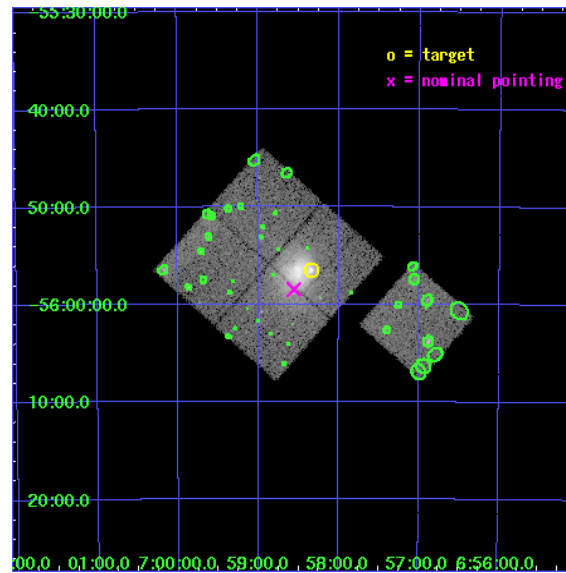
L2 Processing Date : Apr 25 2006

Contents

1	Front	2
2	OBI	3
2.1	OBI	3
2.1.1	Images	3
2.1.2	Bias	3
2.1.3	Parameters	4
2.1.4	Events	4
2.2	Compared Parameters	5
2.3	Aspect	6
2.4	Star Slots	9
2.4.1	Slot 3	9
2.4.2	Slot 4	10
2.4.3	Slot 5	11
2.4.4	Slot 6	12
2.4.5	Slot 7	13
2.5	FID Slots	14
2.5.1	Slot 0	14
2.5.2	Slot 1	15
2.5.3	Slot 2	16
3	Point Sources	17
A	Summary	18
A.1	Status	18
A.2	Comments	18

1 Front

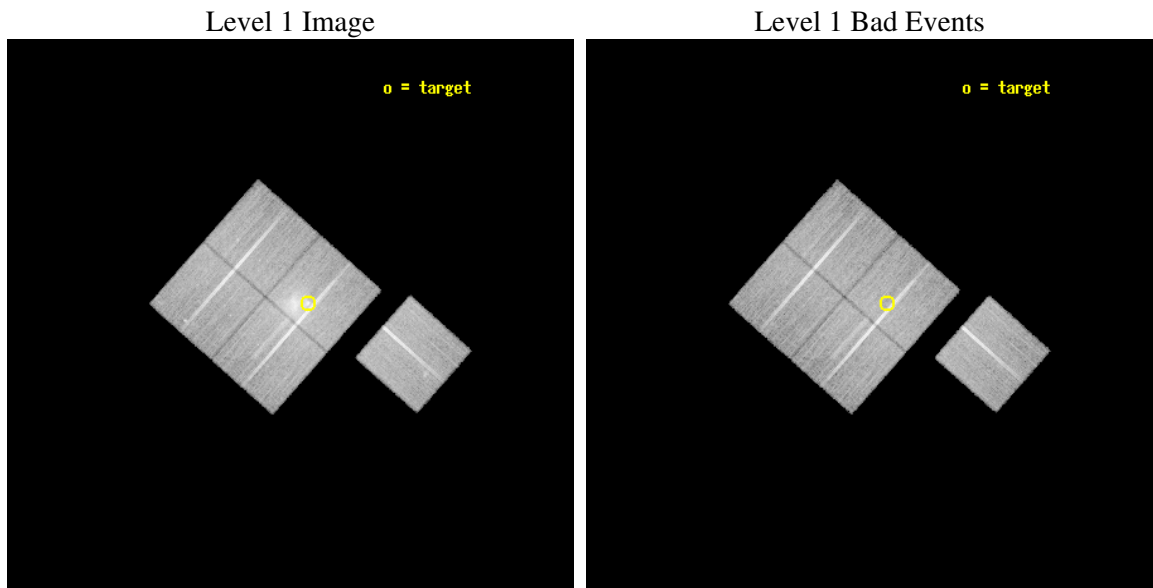
seq_num	800429
obs_id	4985
title	THE MOST INTERESTING CLUSTER IN THE UNIVERSE
observer	Dr Maxim Markevitch
object	1E0657-56
dtcycle	0
cycle	P
ra_targ	104.5827
dec_targ	-55.9415
ra_nom	104.63909500552
dec_nom	-55.974658533479
roll_nom	131.57980974864
revision	2
ontime	27850.277025819
livetime	27486.392653401
ontime0	27856.558976203
ontime1	27853.418015957
ontime2	27850.277025819
ontime3	27853.418015957
ontime6	27853.418005973
l2events	121276



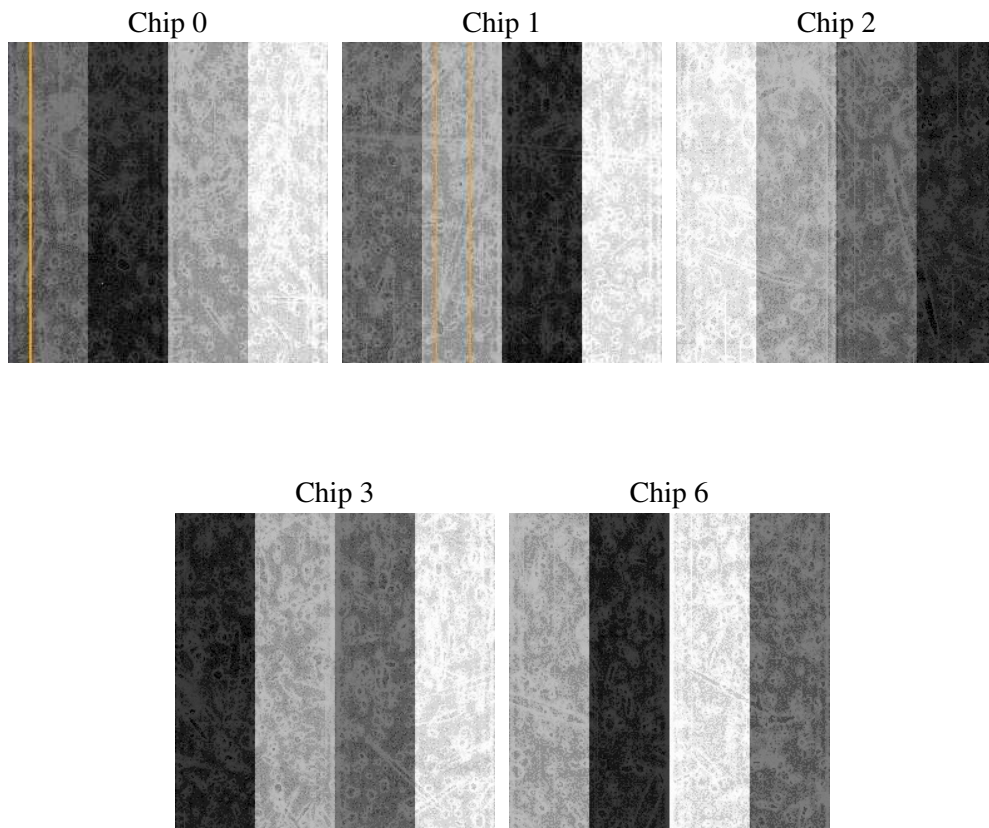
2 OBI

2.1 OBI

2.1.1 Images



2.1.2 Bias



2.1.3 Parameters

obi_num	0
ascdsver	7.6.7.2
caldbver	3.2.1
date	2006-04-25T04:44:56
revision	2

sched_exp_time	27742.457000
ontime	28947.477009356
ontime0	28953.75895974
ontime1	28950.617979586
ontime2	28947.477009356
ontime3	28950.617979586
ontime6	28950.61798951
l1events	934430

2.1.4 Events

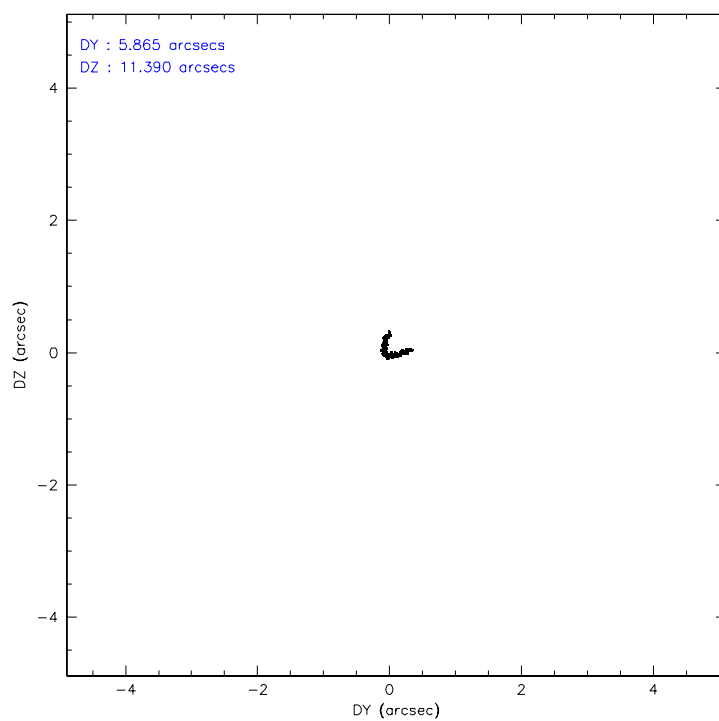
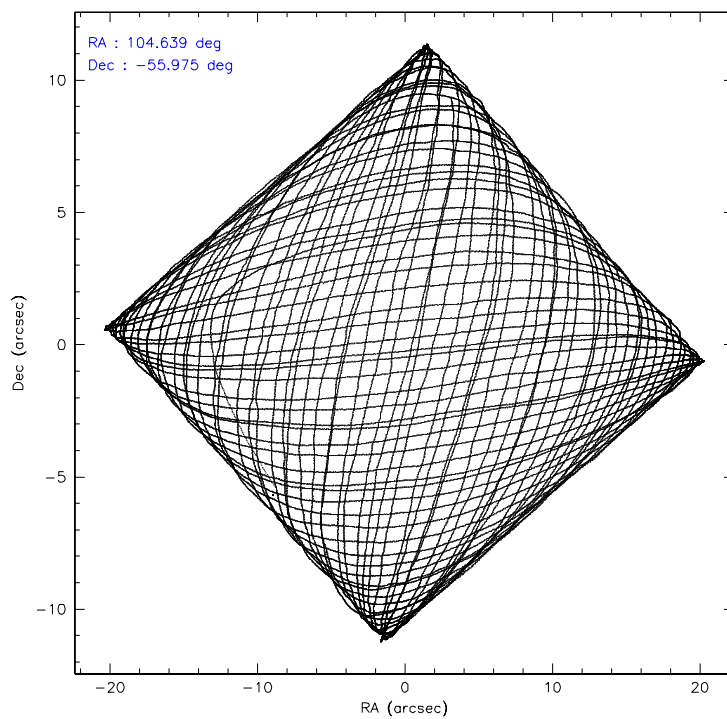
	ccd 0	ccd 1	ccd 2	ccd 3	ccd 6
level 1 events	172222	171164	221322	186177	183545
rejected events	152232	148966	169424	162569	162782
rejected %	88%	87%	76%	87%	88%

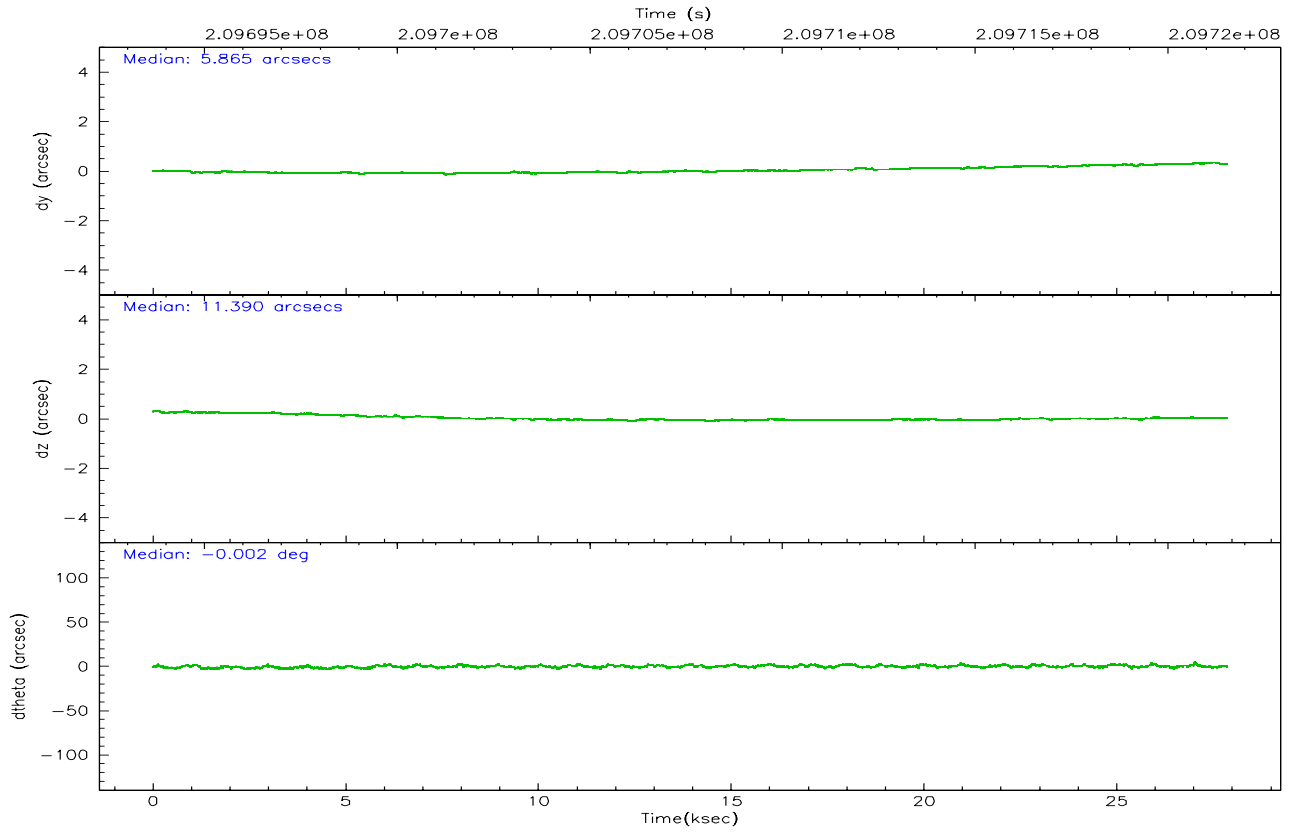
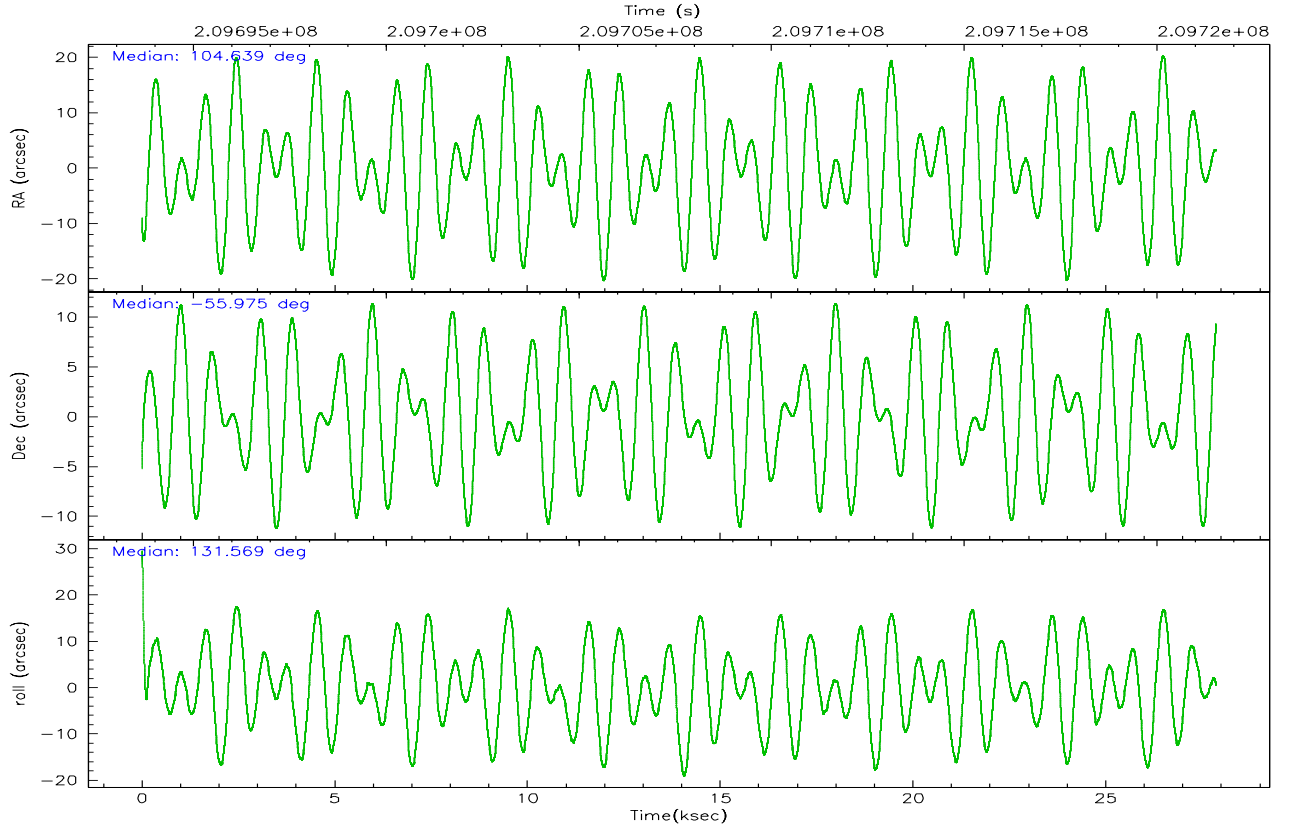
	ccd 0	ccd 1	ccd 2	ccd 3	ccd 6
grade 0 events	8295	9423	35014	12026	8925
	4%	5%	15%	6%	4%
grade 1 events	97	105	297	133	78
	0%	0%	0%	0%	0%
grade 2 events	4526	4650	7511	4390	4266
	2%	2%	3%	2%	2%
grade 3 events	2245	2406	3095	2247	2157
	1%	1%	1%	1%	1%
grade 4 events	2029	2364	3102	2134	2131
	1%	1%	1%	1%	1%
grade 5 events	6229	6766	5989	7019	7086
	3%	3%	2%	3%	3%
grade 6 events	3542	4085	4109	3520	4011
	2%	2%	1%	1%	2%
grade 7 events	145259	141365	162205	154708	154891
	84%	82%	73%	83%	84%

2.2 Compared Parameters

Parameter	Planned	Actual	Parameter	Planned	Actual
Instrument	ACIS	ACIS	Obspar format version number	6	6
Detector	ACIS-01236	ACIS-01236	Obspar file type	PREDICTED	ACTUAL
Grating	NONE	NONE	Obspar update status	NONE	UPDATED
Data mode	VFAINT	VFAINT	On-chip summing requested	N	N
Observation mode	POINTING	POINTING	Subarray requested	NONE	NONE
Pointing RA	104.685557	104.6390950055153	Alternating exposures requested	N	N
Pointing Dec	-55.983181	-55.97465853347851	Primary exposure time	0.000000	3.1
Pointing Roll	131.409612	131.5798097486405			
SIM focus pos (mm)	-0.782348	-0.7809083437167272			
SIM defocus (mm)	0	0.001439871863259334			
SIM translation stage pos (mm)	-224.592463	-224.5962429424501			
SIM translation stage offset (mm)	-9	-8.996210060479569			
Observation start time	209693788.184000	209692281.74624			
Observation start date	2004-08-24T00:15:24	2004-08-23T23:51:21			
Observation end time	209721531.184000	209721766.89755			
Observation end date	2004-08-24T07:57:47	2004-08-24T08:02:46			
Read mode	TIMED	TIMED			

2.3 Aspect



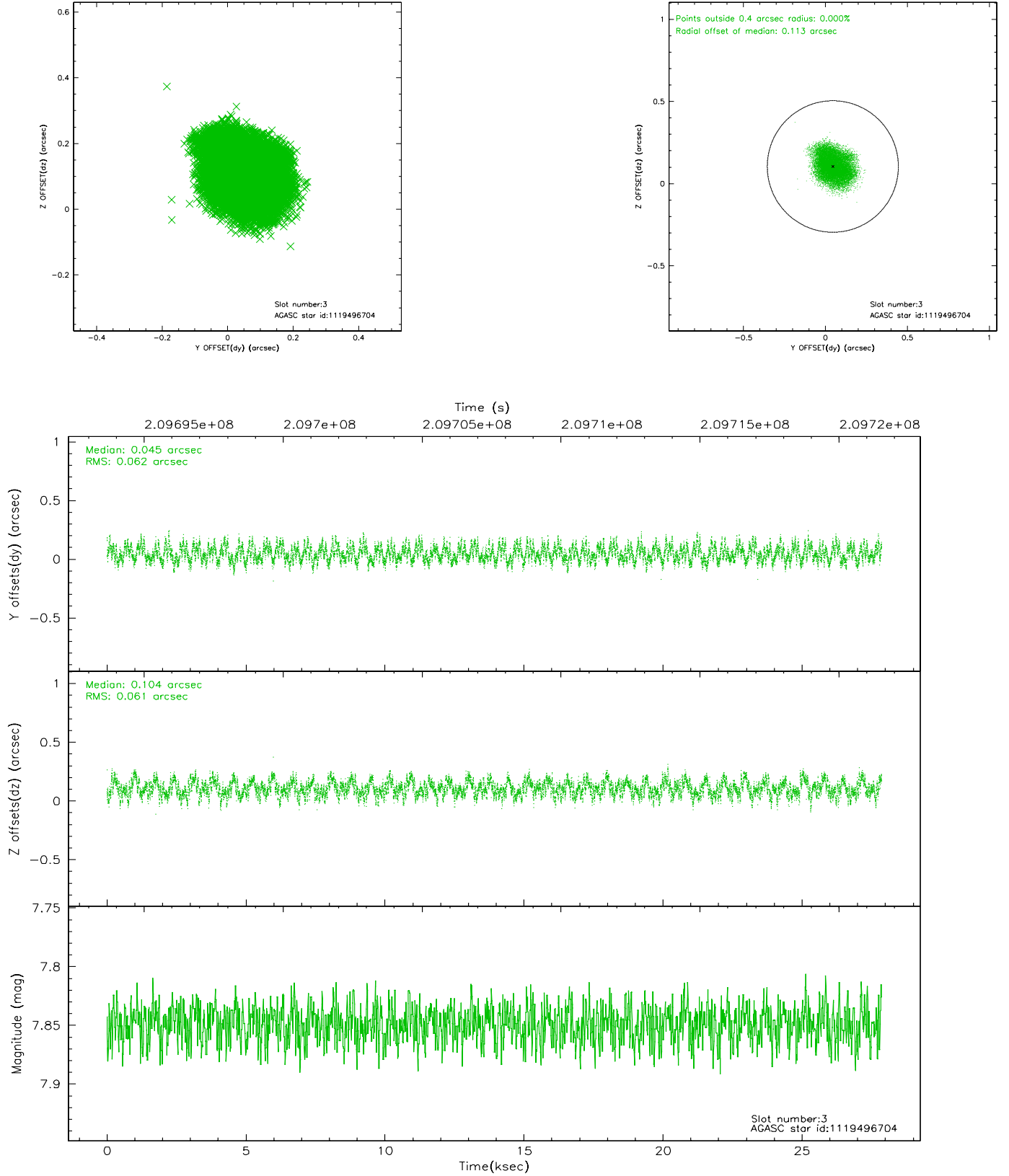


Slot Statistics

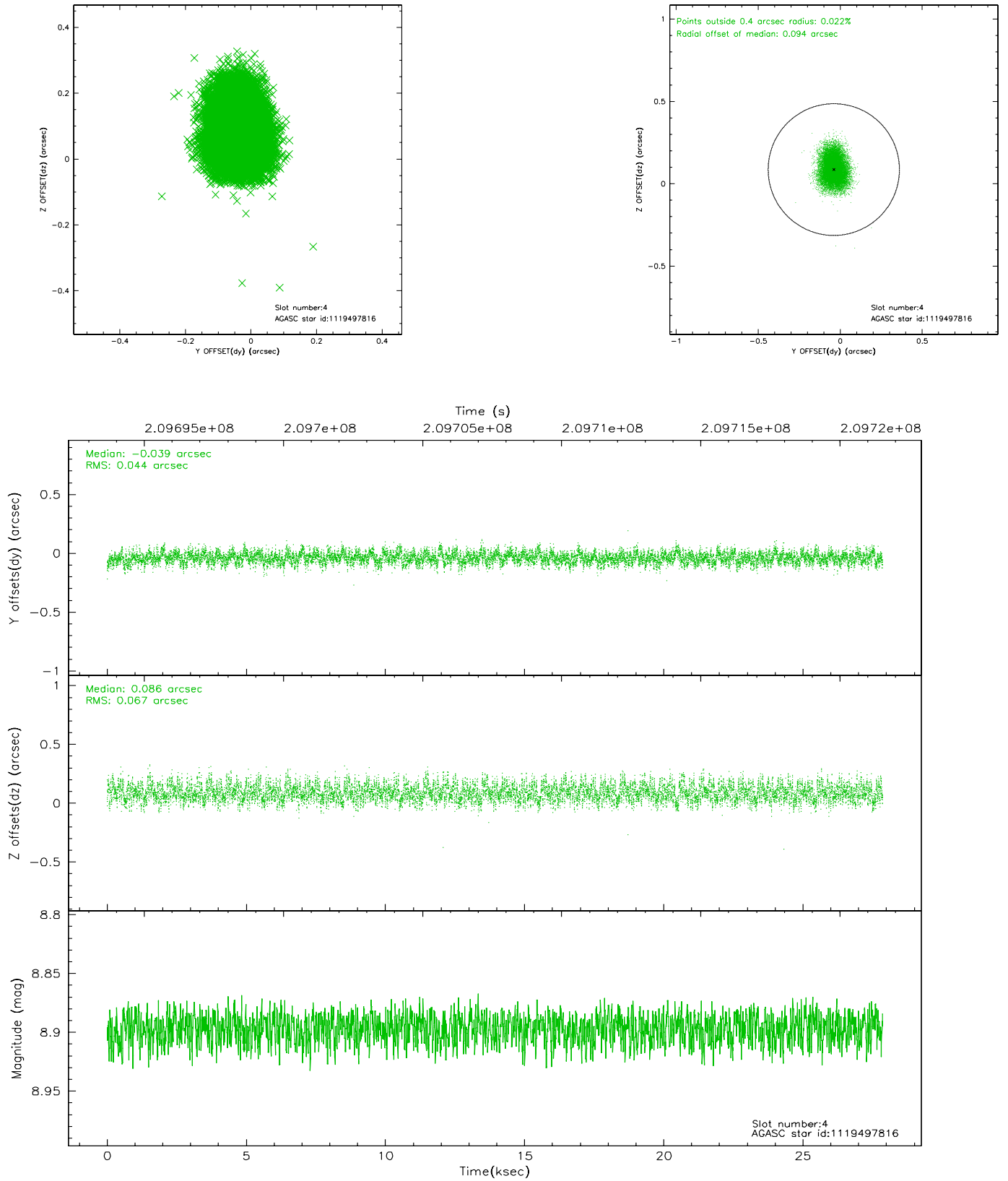
slot	status	id	mag	n_pts	med_dy	med_dz	dr1	dr2	ra	dec	mean_y	mean_z
0	FID	ACIS-I-2	7.17	6794	-0.036	-0.044	0.013	0.030	0.000000	0.000000	-761.05	-1024.85
1	FID	ACIS-I-4	7.14	6794	0.031	0.042	0.009	0.015	0.000000	0.000000	2152.99	881.28
2	FID	ACIS-I-5	7.21	6796	-0.096	0.071	0.013	0.025	0.000000	0.000000	-1814.35	878.12
3	GUIDE	1119496704	7.85	13589	0.045	0.104	0.096	0.143	104.368364	-55.667750	1276.77	-266.72
4	GUIDE	1119497816	8.90	13584	-0.039	0.086	0.085	0.139	105.863109	-55.810214	-1123.21	-2185.11
5	GUIDE	1120026344	6.70	13590	-0.069	-0.028	0.077	0.124	104.651539	-56.394853	-1066.96	1030.96
6	GUIDE	1119493144	9.26	13582	0.034	-0.062	0.107	0.181	104.842787	-55.103632	2161.12	-2336.50
7	GUIDE	1120022760	9.33	13584	0.025	-0.102	0.132	0.211	103.957300	-56.525557	-513.82	2380.74

2.4 Star Slots

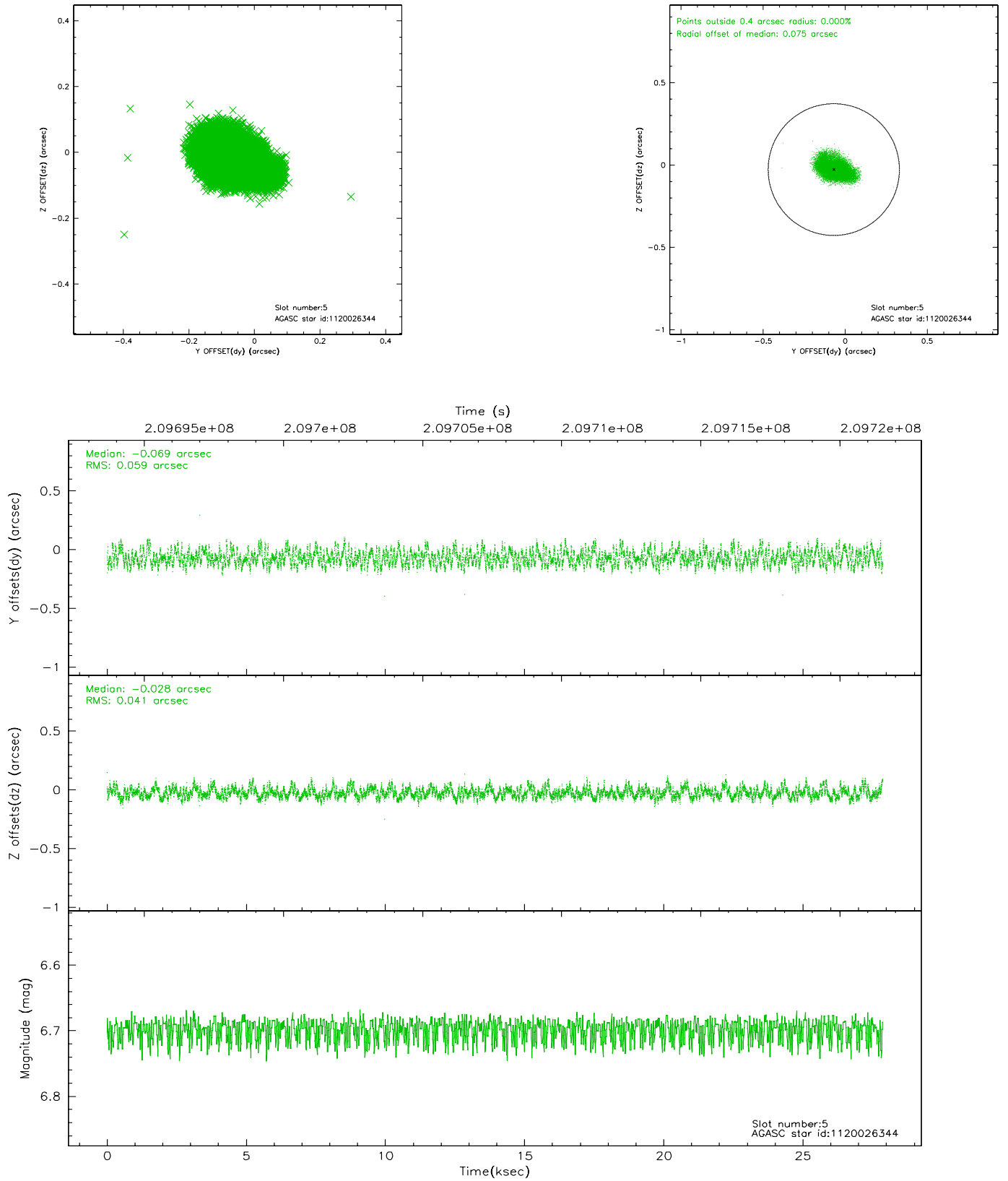
2.4.1 Slot 3



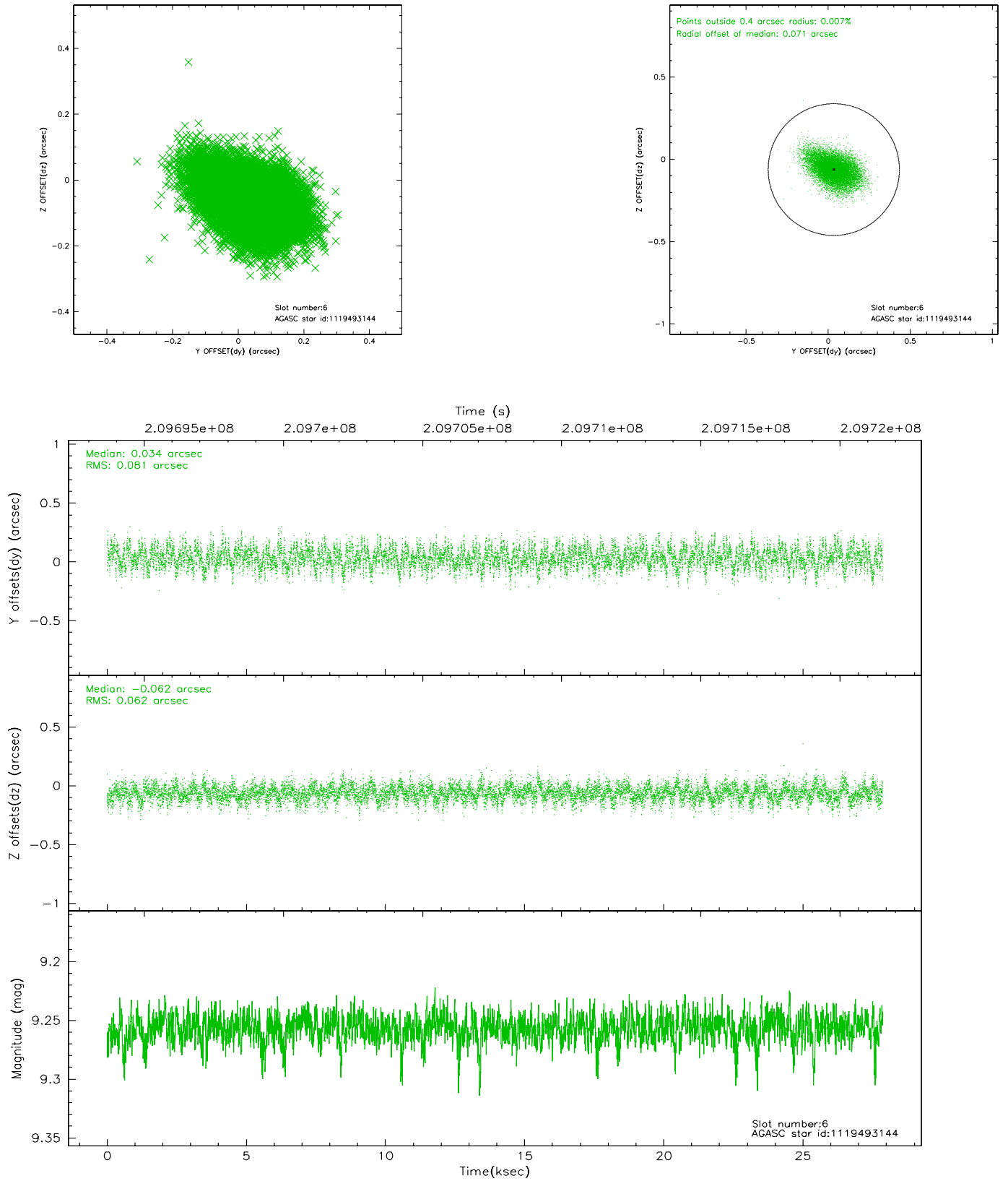
2.4.2 Slot 4



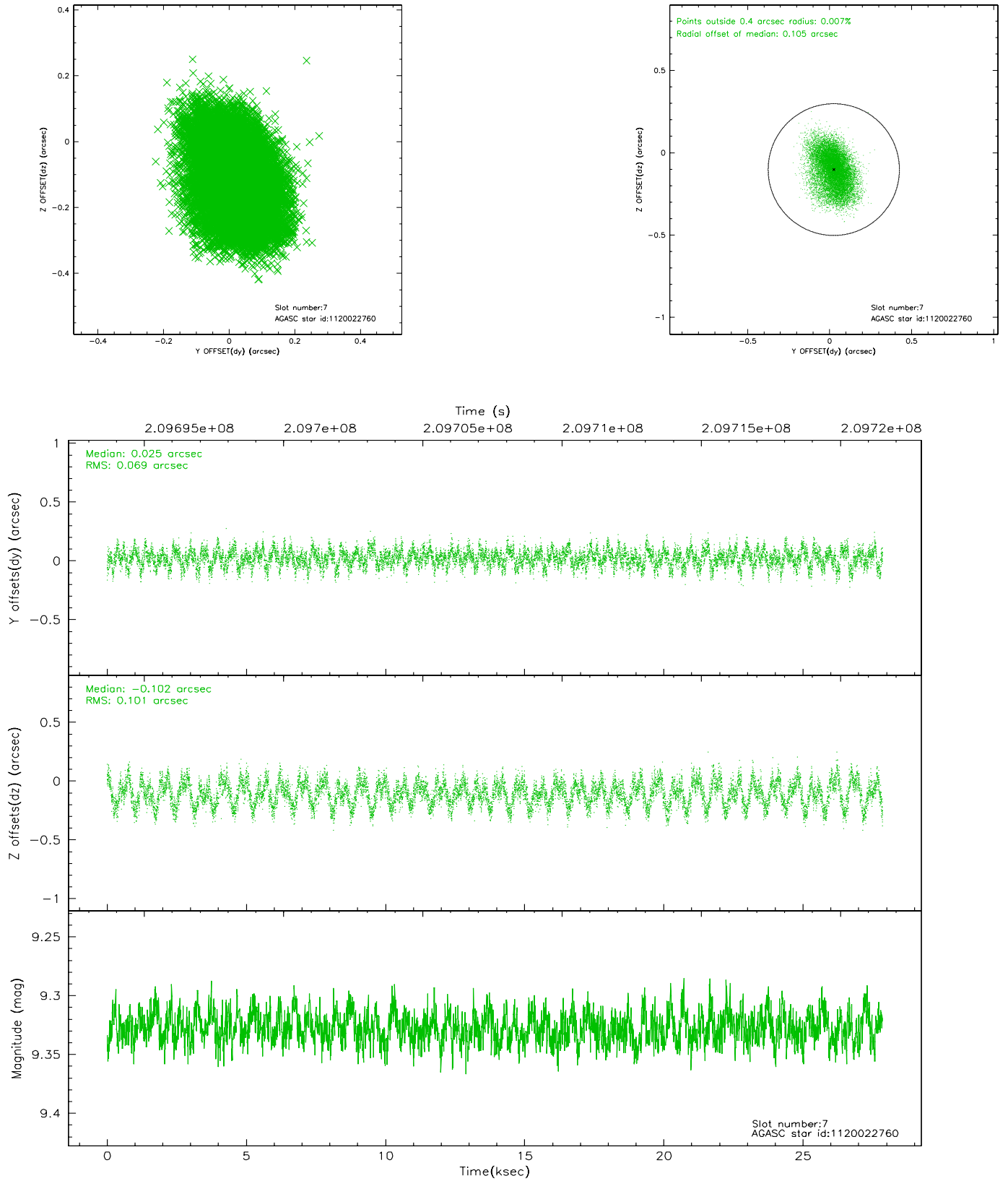
2.4.3 Slot 5



2.4.4 Slot 6

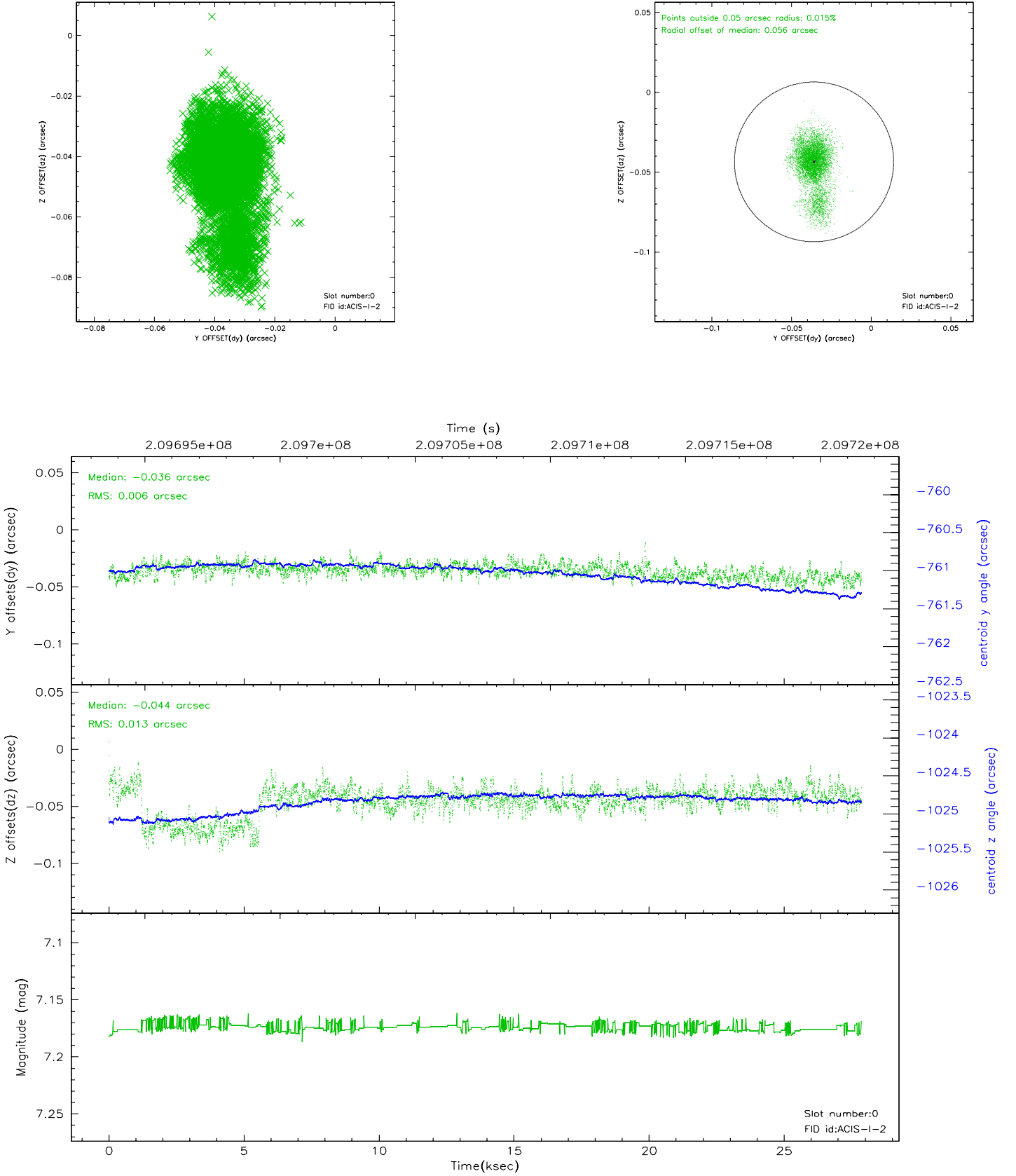


2.4.5 Slot 7

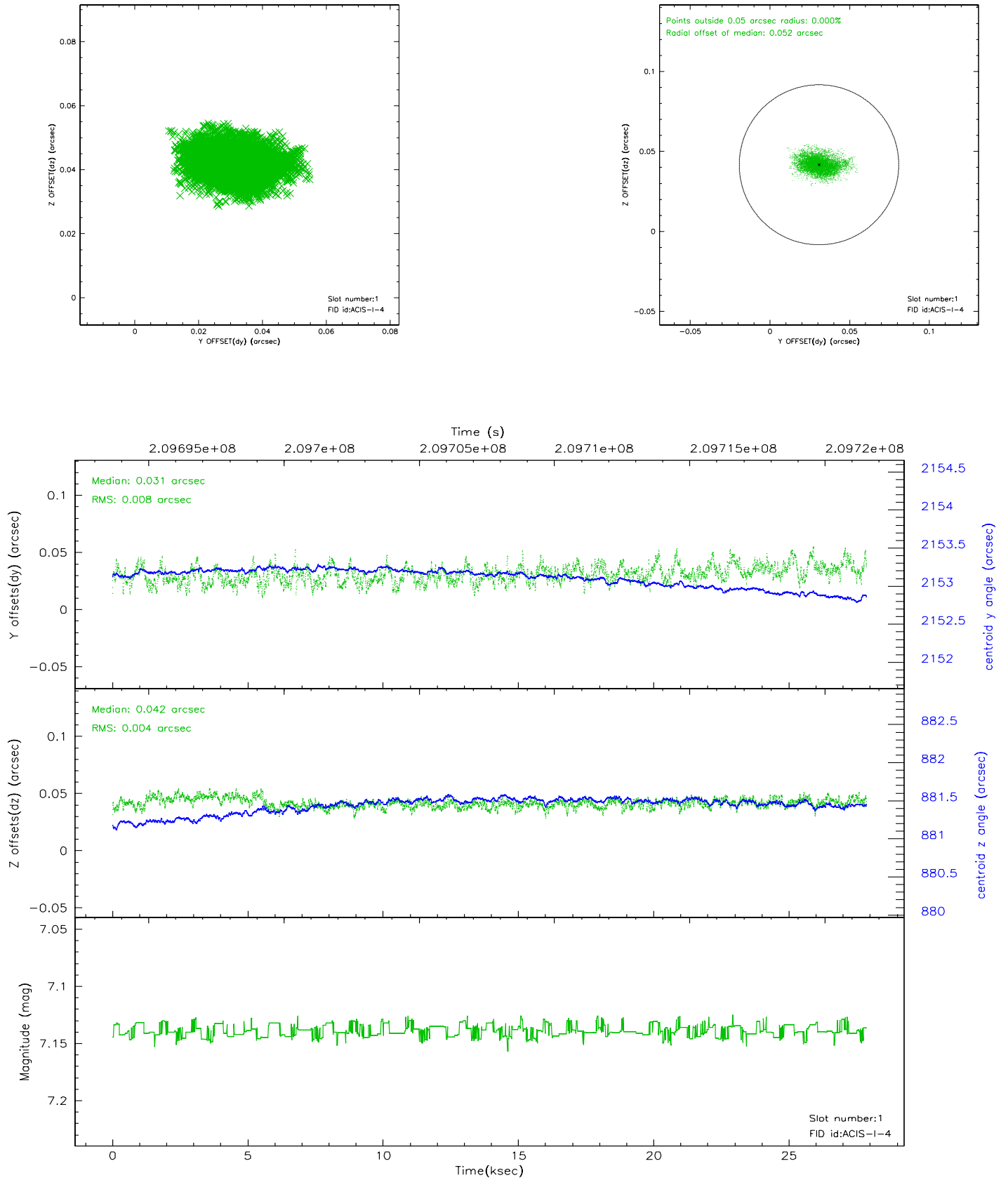


2.5 FID Slots

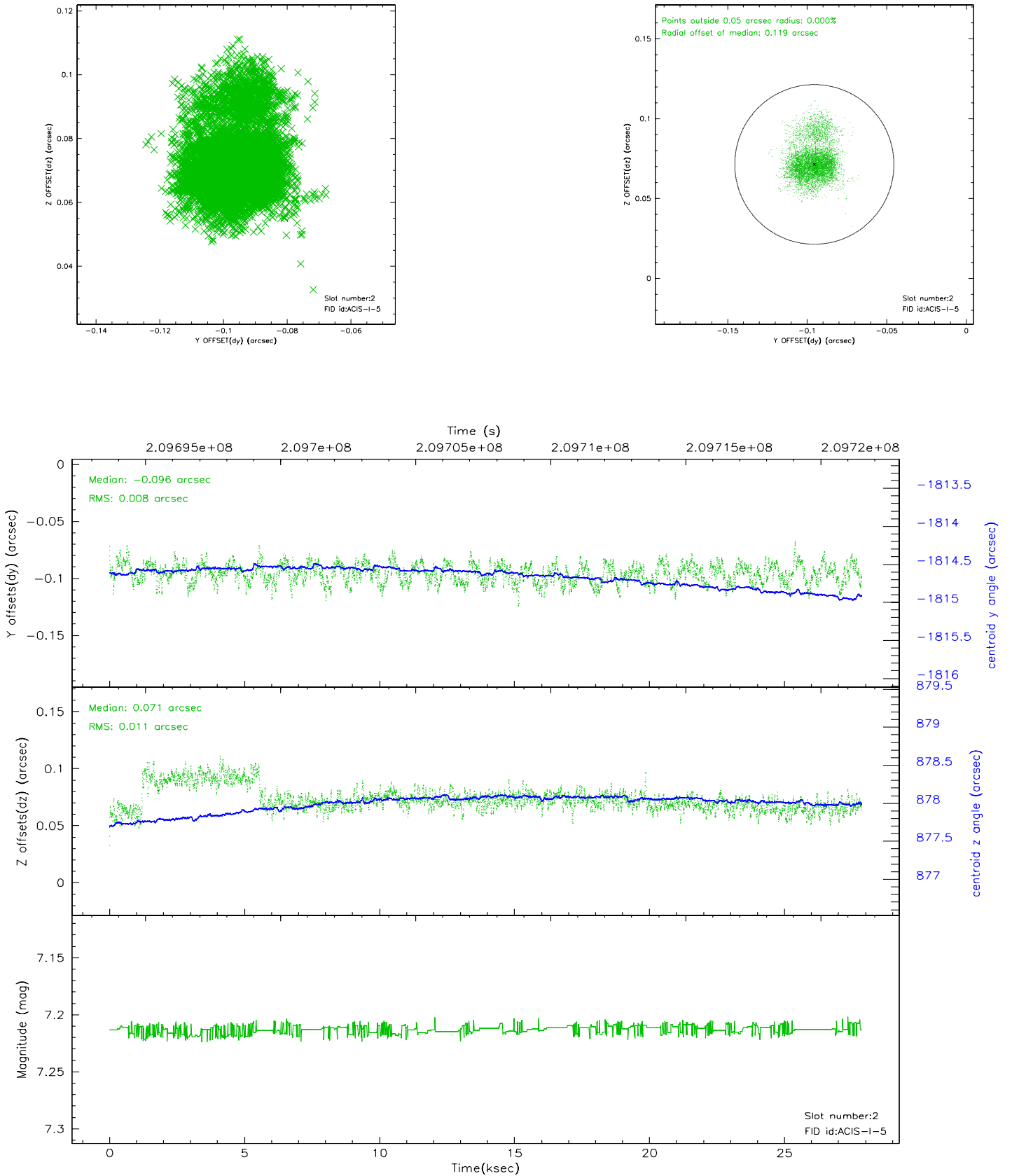
2.5.1 Slot 0



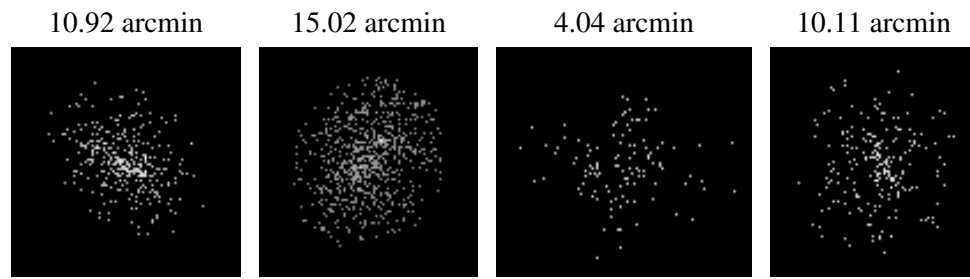
2.5.2 Slot 1



2.5.3 Slot 2



3 Point Sources



A Summary

A.1 Status

V&V Scientist	Beth Sundheim
V&V Date (YYYY-MM-DD)	2006.04.25
V&V Edition	1
V&V Disposition and Status	OK
V&V Charge Time	27.853

A.2 Comments