

V&V Reference Report

L2 ASCDS Version : 8.5

Observation 4945 - L2 Version 4
Chandra X-Ray Center

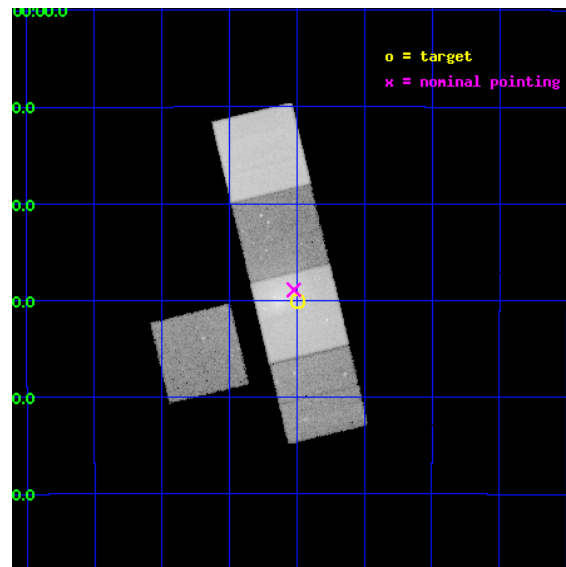
L2 Processing Date : Dec 8 2012

Contents

1	Front	2
2	OBI	3
2.1	OBI	3
2.1.1	Images	3
2.1.2	Bias	3
2.1.3	Parameters	4
2.1.4	Events	4
2.2	Compared Parameters	5
2.3	Aspect	6
2.4	Star Slots	9
2.4.1	Slot 3	9
2.4.2	Slot 4	10
2.4.3	Slot 5	11
2.4.4	Slot 6	12
2.4.5	Slot 7	13
2.5	FID Slots	14
2.5.1	Slot 0	14
2.5.2	Slot 1	15
2.5.3	Slot 2	16
A	Summary	17
A.1	Status	17
A.2	Comments	17

1 Front

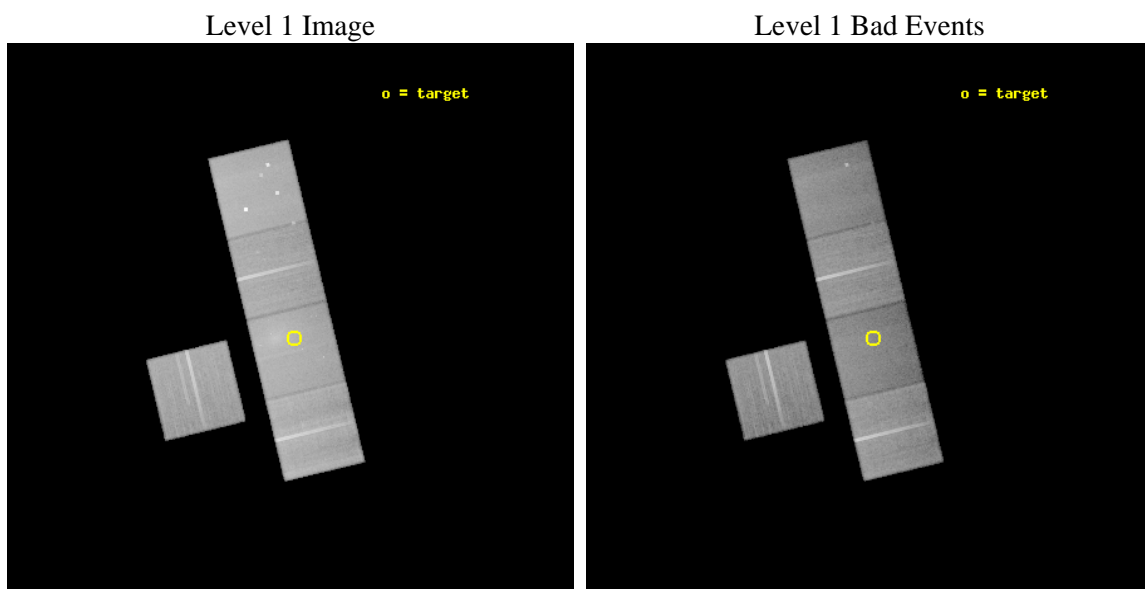
seq_num	800396	Sequence number
obs_id	4945	Observation id
title	Filamentary Radio Relics in Clusters of Galaxies: Radio Bubbles or Merger Shocks?	Proposal title
observer	Dr. CRAIG SARAZIN	Principal investigator
object	Abell 13	Source name
dtcycle	0	
cycle	P	events from which exps? Prim/Second/Both
ra_targ	3.37375	Observer's specified target RA [deg]
dec_targ	-19.501528	Observer's specified target Dec [deg]
ra_nom	3.3806717350784	Nominal RA [deg]
dec_nom	-19.481799700431	Nominal Dec [deg]
roll_nom	76.447397036807	Nominal Roll [deg]
revision	4	Processing version of data
ontime	56038.236073703	Sum of GTIs [s]
livetime	55306.05526465	Livetime [s]
ontime3	56012.985061795	Sum of GTIs [s]
ontime5	56038.195033699	Sum of GTIs [s]
ontime6	56013.026181549	Sum of GTIs [s]
ontime7	56038.236073703	Sum of GTIs [s]
ontime8	56031.79002285	Sum of GTIs [s]
l2events	544562	Number of level 2 events



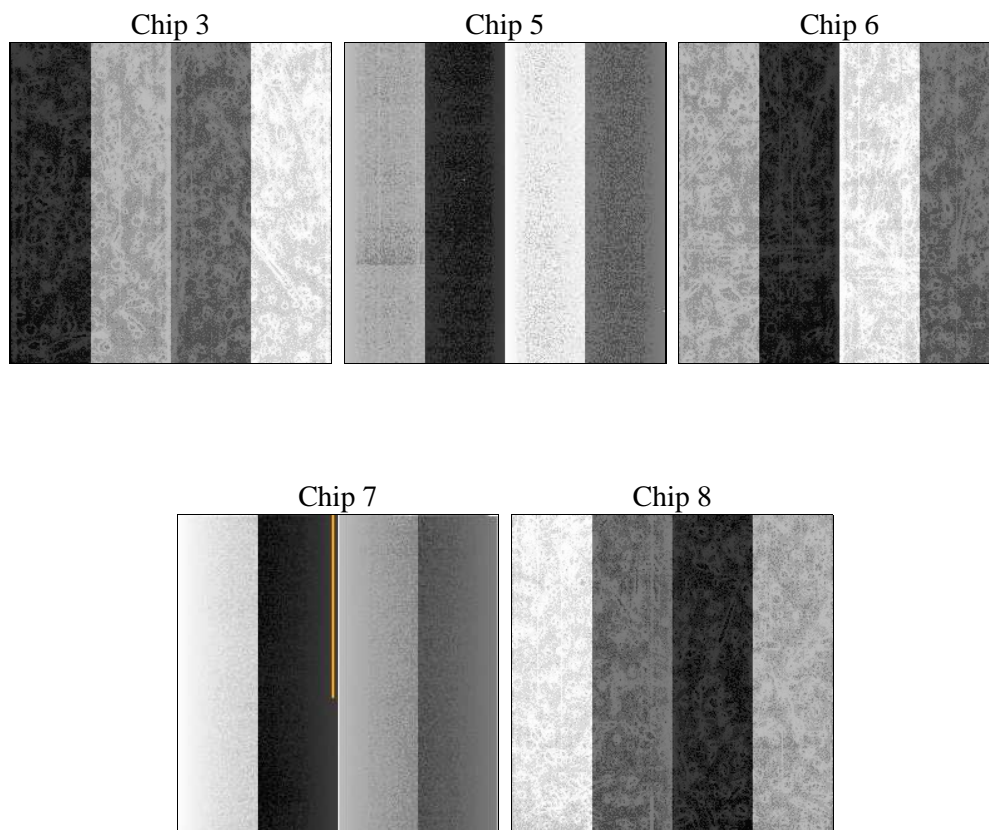
2 OBI

2.1 OBI

2.1.1 Images



2.1.2 Bias



2.1.3 Parameters

obi_num	0	Obi number	sched_exp_time	56000.000000	[s] Scheduled observation exposure time
ascdsver	8.5	Processing system revision	ontime	56038.236073703	Sum of GTIs [s]
caldbver	4.5.4	 	ontime3	56012.985061795	Sum of GTIs [s]
date	2012-12-08T09:20:18	Date and time of file creation	ontime5	56038.195033699	Sum of GTIs [s]
revision	4	Processing version of data	ontime6	56013.026181549	Sum of GTIs [s]
			ontime7	56038.236073703	Sum of GTIs [s]
			ontime8	56031.79002285	Sum of GTIs [s]
			l1events	2115530	Number of level 1 events

2.1.4 Events

	ccd 3	ccd 5	ccd 6	ccd 7	ccd 8		ccd 3	ccd 5	ccd 6	ccd 7	ccd 8
level 1 events	352458	494146	374805	443418	450703	grade 0 events	13028	34723	16505	30263	31334
rejected events	318235	246045	333860	218200	349477		3%	7%	4%	6%	6%
rejected %	90%	49%	89%	49%	77%	grade 1 events	176	565	175	343	353
							0%	0%	0%	0%	0%
						grade 2 events	6978	70078	8385	47782	22000
							1%	14%	2%	10%	4%
						grade 3 events	3857	10521	4132	22755	10863
							1%	2%	1%	5%	2%
						grade 4 events	3844	9822	4126	22231	10328
							1%	1%	1%	5%	2%
						grade 5 events	13664	39431	14225	42375	19854
							3%	7%	3%	9%	4%
						grade 6 events	6517	122971	7802	102200	26710
							1%	24%	2%	23%	5%
						grade 7 events	304394	206035	319455	175469	329261
							86%	41%	85%	39%	73%

2.2 Compared Parameters

Parameter	Planned	Actual	Parameter	Planned	Actual
Instrument	ACIS	ACIS	Obspar format version number	7	7
Detector	ACIS-35678	ACIS-35678	Obspar file type	PREDICTED	ACTUAL
Grating	NONE	NONE	Obspar update status	NONE	UPDATED
Data mode	VFAINT	VFAINT	Number of optional ACIS chips dropped	0	0
Observation mode	POINTING	POINTING	On-chip summing requested	N	N
[deg] Pointing RA	3.389227	3.380671735078399	Subarray requested	NONE	NONE
[deg] Pointing Dec	-19.507823	-19.48179970043119	Alternating exposures requested	N	N
[deg] Pointing Roll	76.293617	76.44739703680719	[s] Primary exposure time	0.000000	3.1
[mm] SIM focus pos	-0.684267	-0.6828225247311905			
[mm] SIM defocus	0	0.001444936568705701			
[mm] SIM translation stage pos	-190.132523	-190.1425803651734			
[mm] SIM translation stage offset	0	0.01005778216563158			
[s] Observation start time (MET)	209828796.184000	209827741.65227			
Observation start date	2004-08-25T13:45:32	2004-08-25T13:29:01			
[s] Observation end time (MET)	209884796.184000	209885653.12985			
Observation end date	2004-08-26T05:18:52	2004-08-26T05:34:13			
Read mode	TIMED	TIMED			

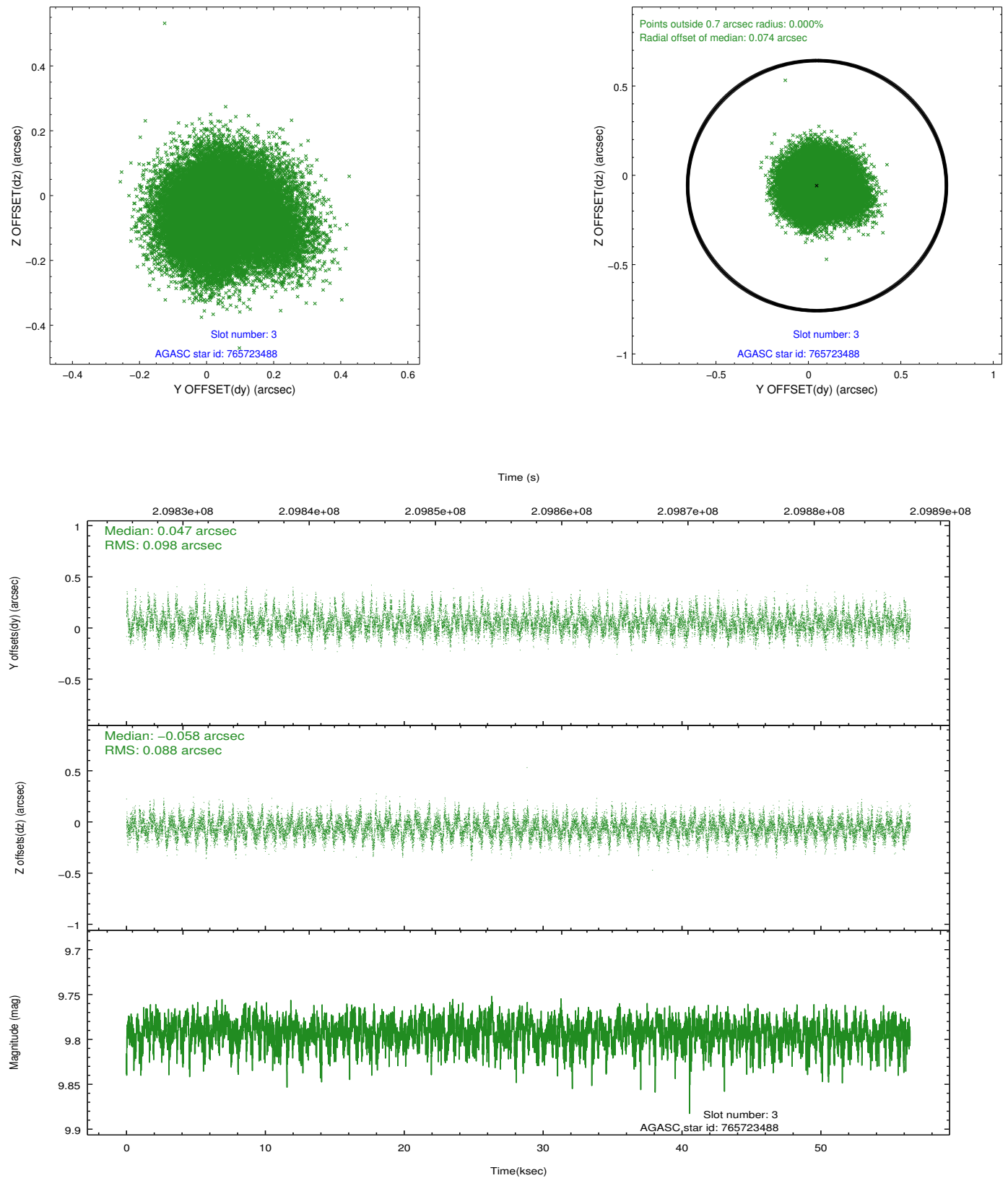
2.3 Aspect

Slot Statistics

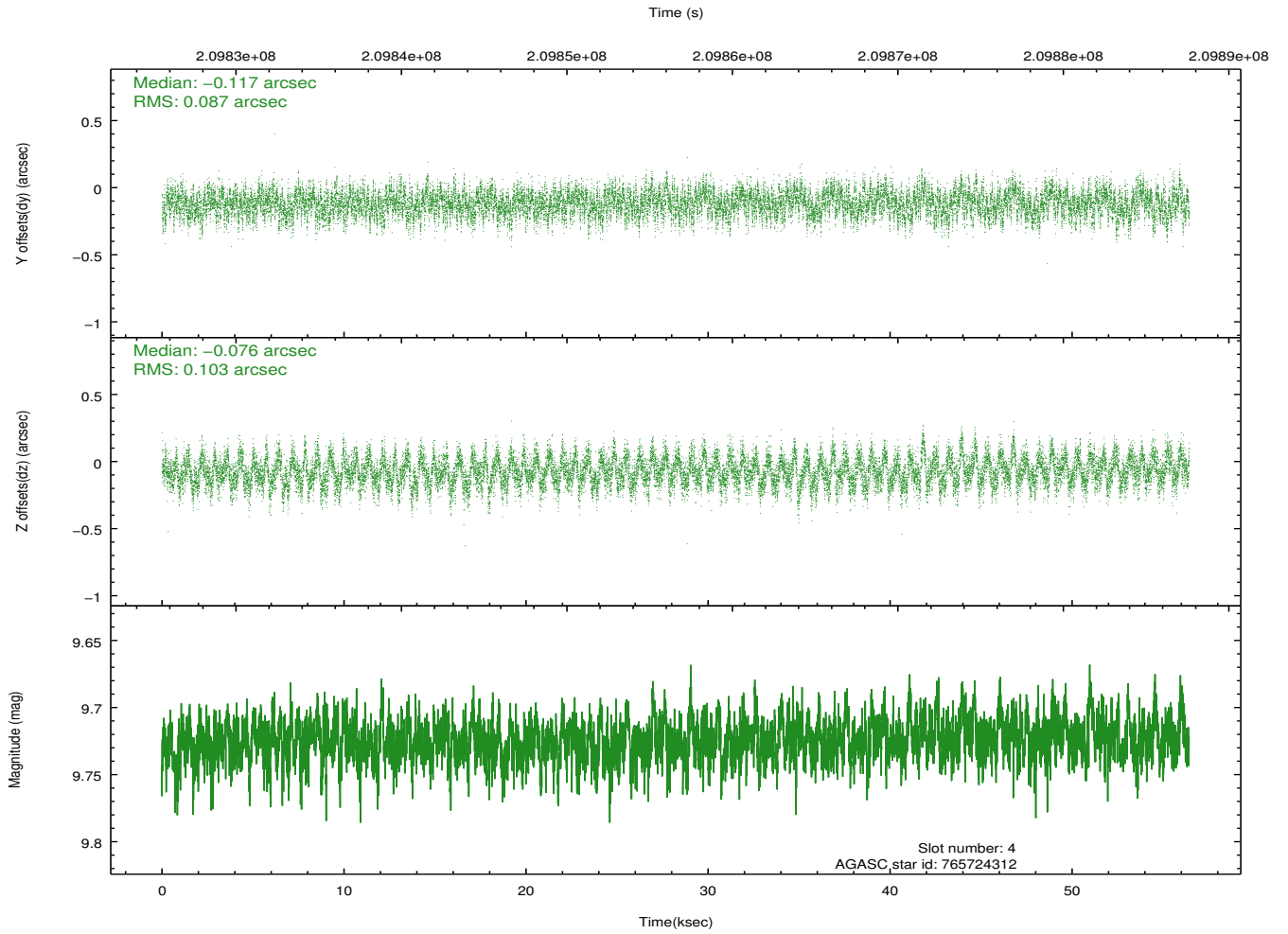
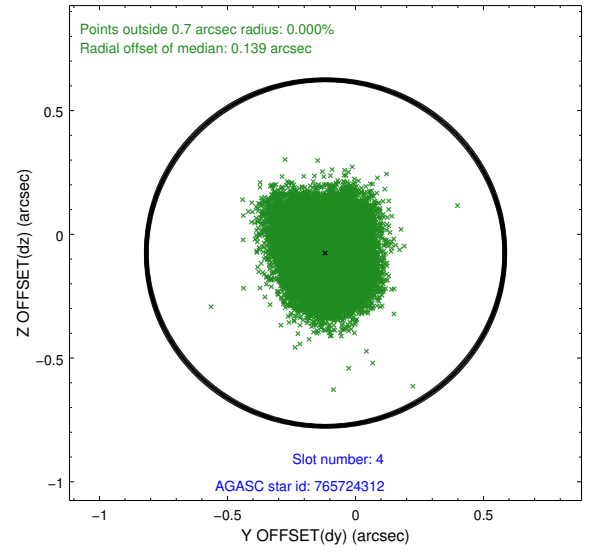
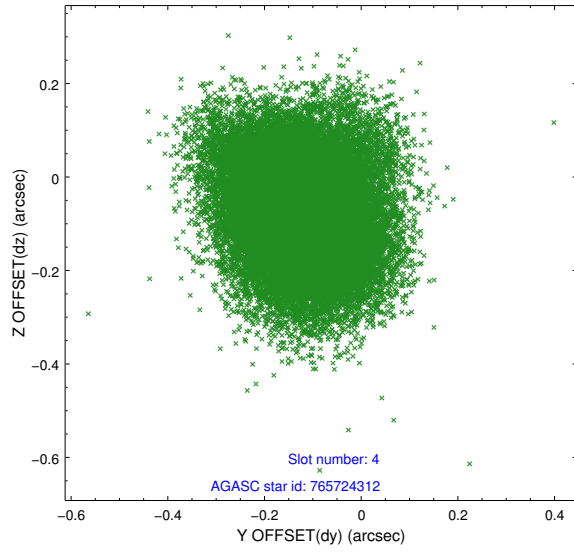
slot	status	id	mag	n_pts	med_dy	med_dz	dr1	dr2	ra	dec	mean_y	mean_z
0	FID	ACIS-S-2	7.11	13764	-0.029	-0.032	0.017	0.026	0.000000	0.000000	-761.00	-1730.79
1	FID	ACIS-S-4	7.20	13766	0.101	0.023	0.015	0.024	0.000000	0.000000	2152.40	177.82
2	FID	ACIS-S-5	7.23	13765	-0.105	0.020	0.017	0.023	0.000000	0.000000	-1813.99	171.40
3	GUIDE	765723488	9.79	27504	0.047	-0.058	0.141	0.227	2.962358	-19.703296	-1028.06	1237.40
4	GUIDE	765724312	9.72	27510	-0.117	-0.076	0.144	0.230	2.827474	-19.152847	785.48	2157.93
5	GUIDE	765724904	9.04	27508	-0.083	0.054	0.090	0.145	3.162307	-19.198136	899.49	1013.77
6	GUIDE	765730008	8.86	27521	0.032	0.217	0.085	0.137	4.092683	-19.399609	939.57	-2229.22
7	GUIDE	765724576	8.66	27516	0.116	-0.138	0.067	0.108	2.872210	-18.706898	2381.04	2395.54

2.4 Star Slots

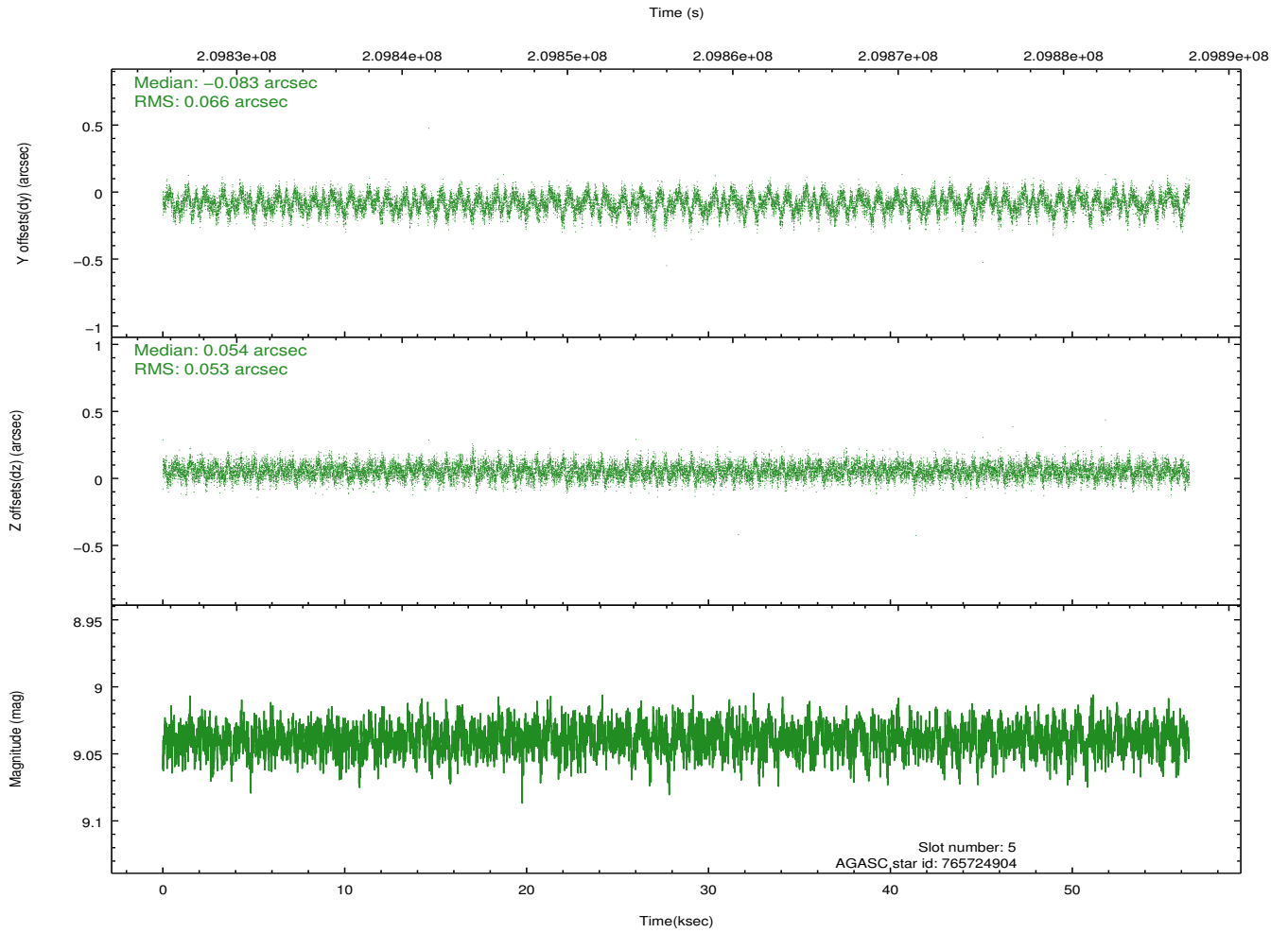
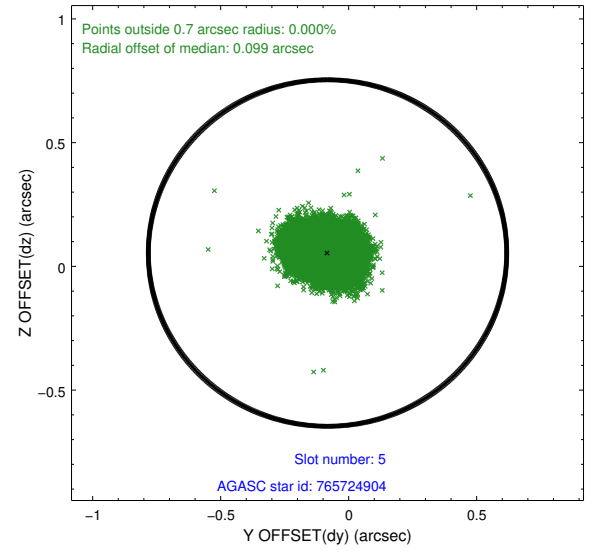
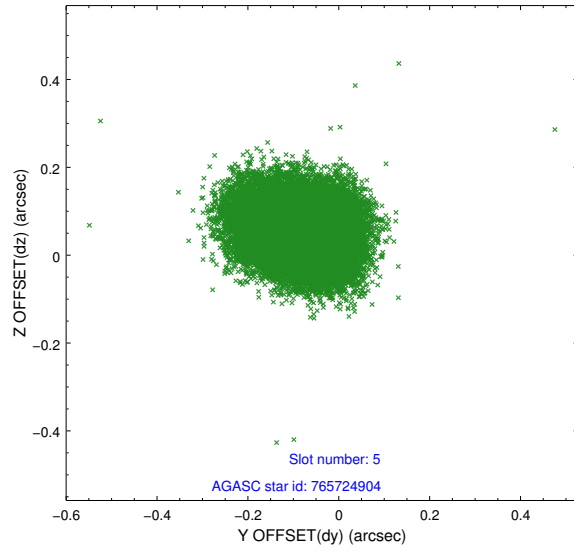
2.4.1 Slot 3



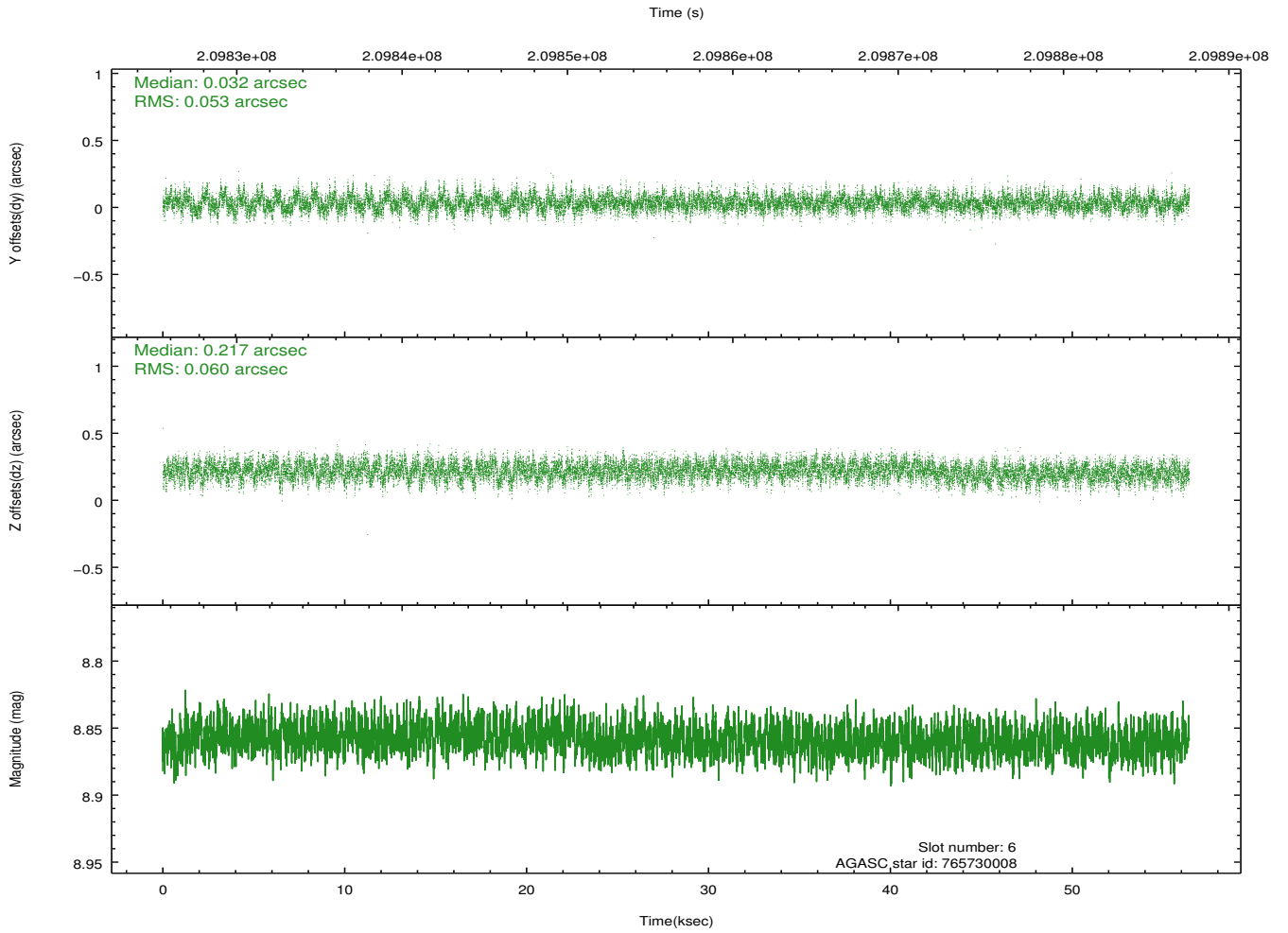
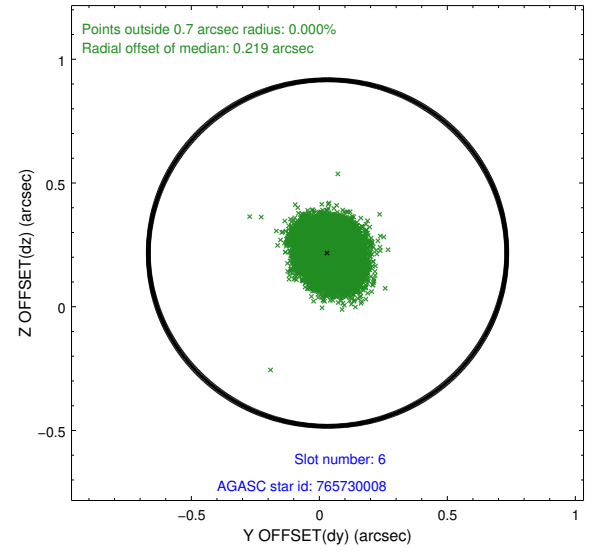
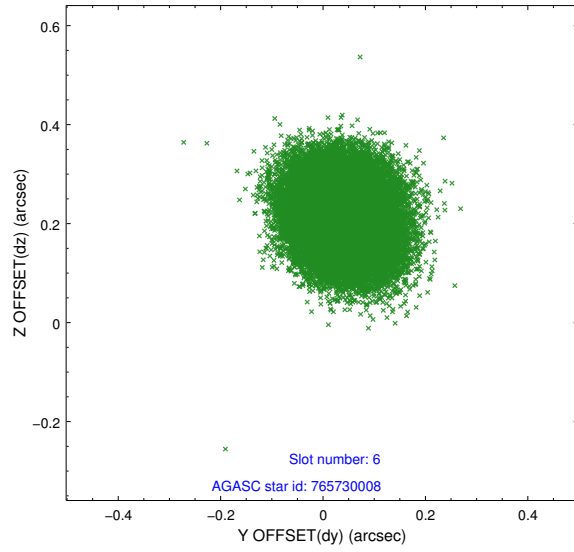
2.4.2 Slot 4



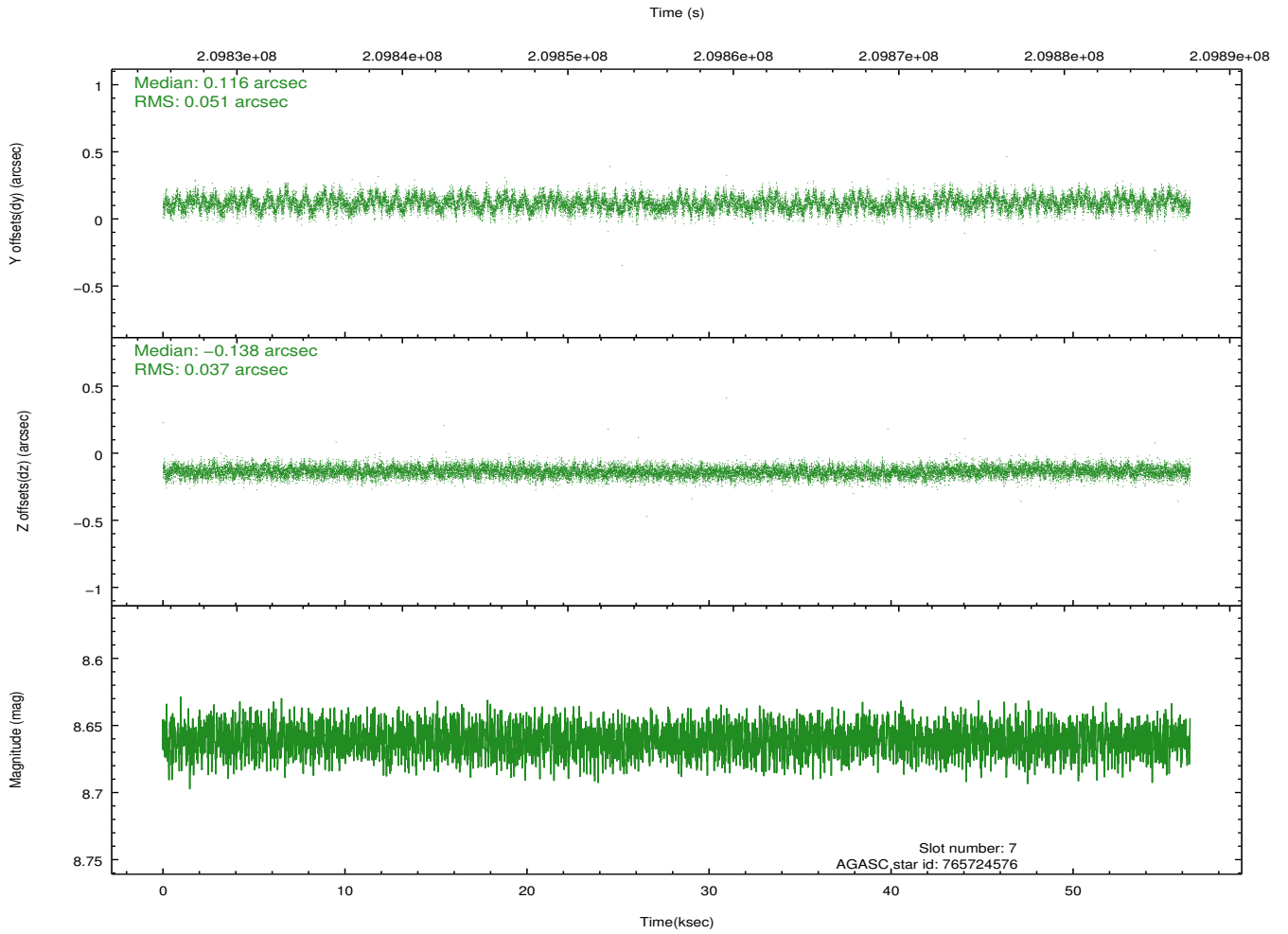
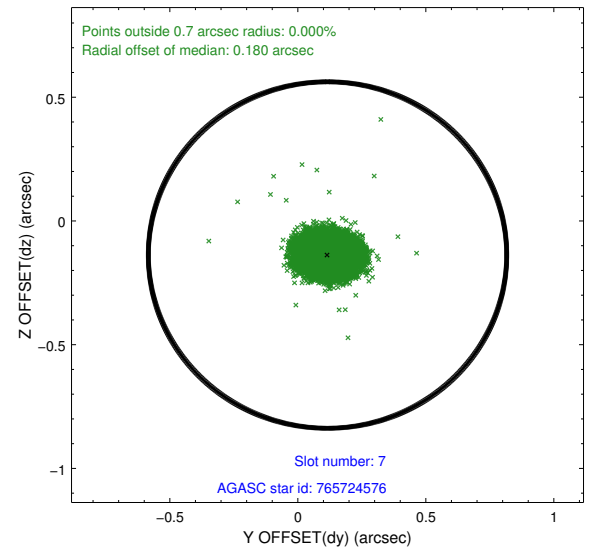
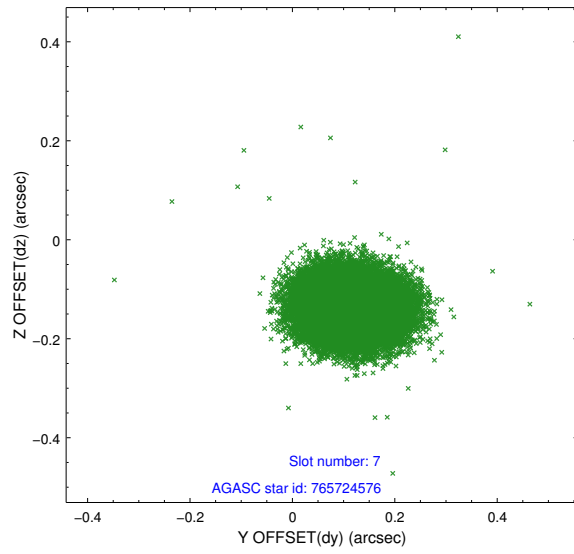
2.4.3 Slot 5



2.4.4 Slot 6

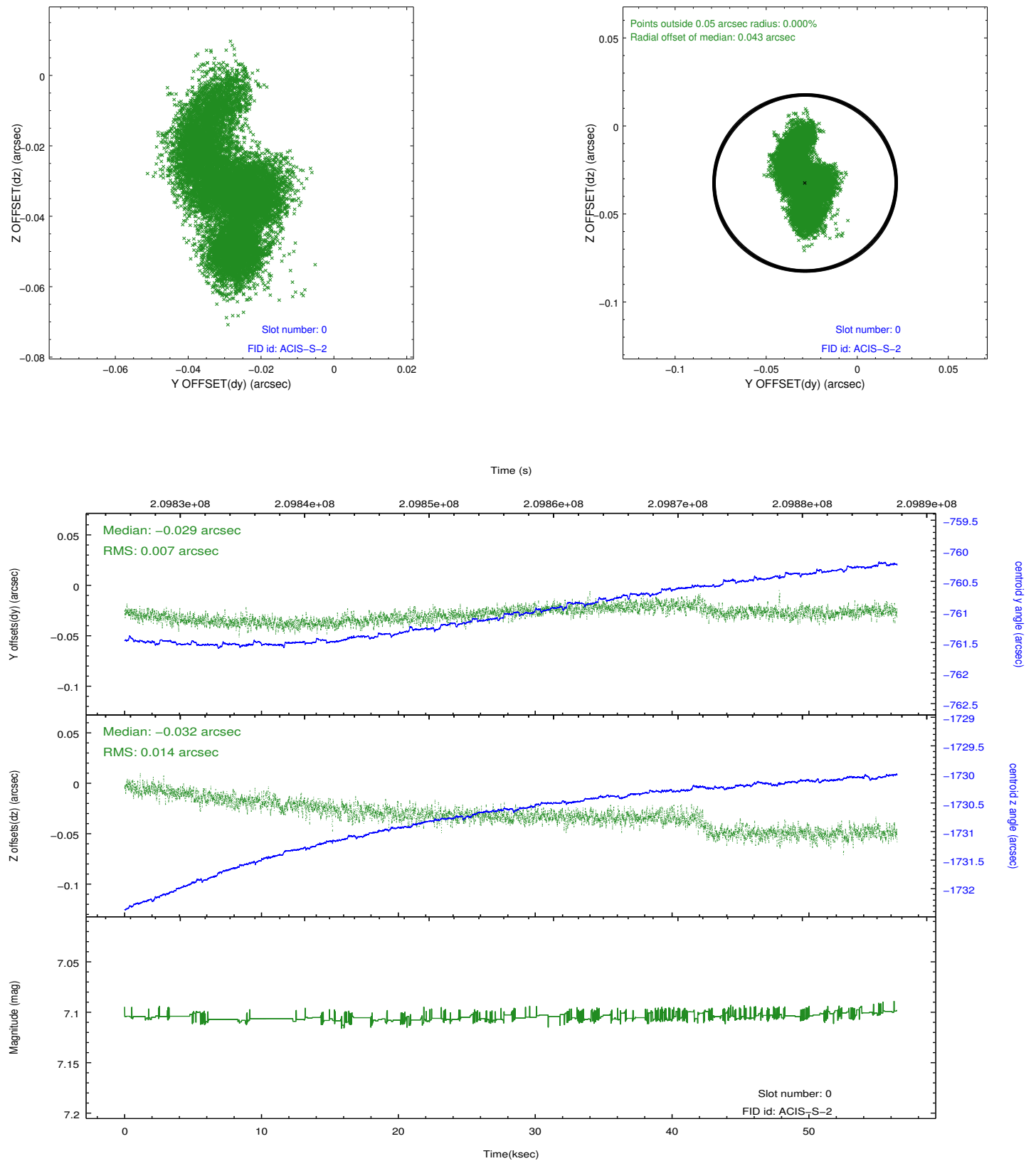


2.4.5 Slot 7

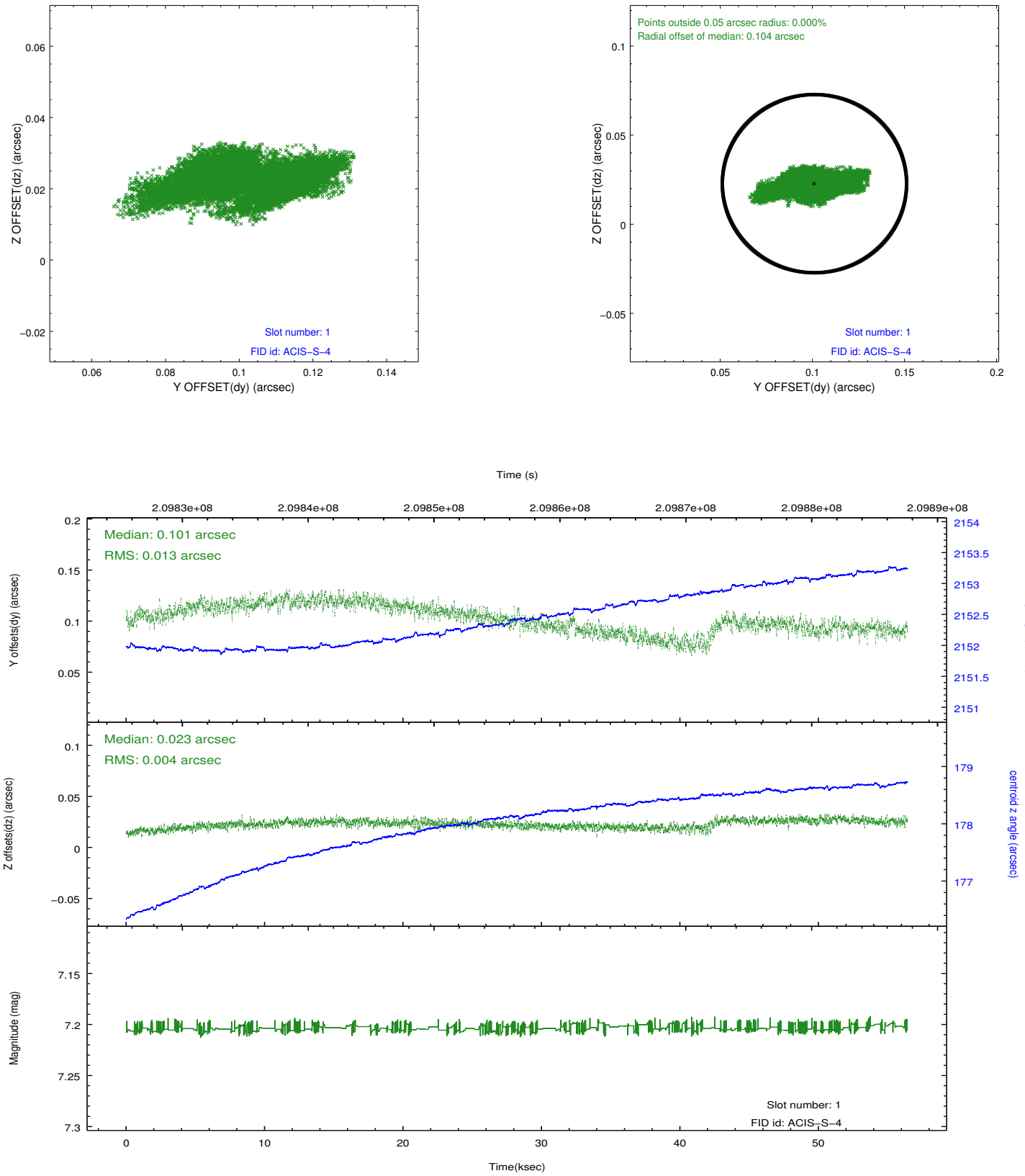


2.5 FID Slots

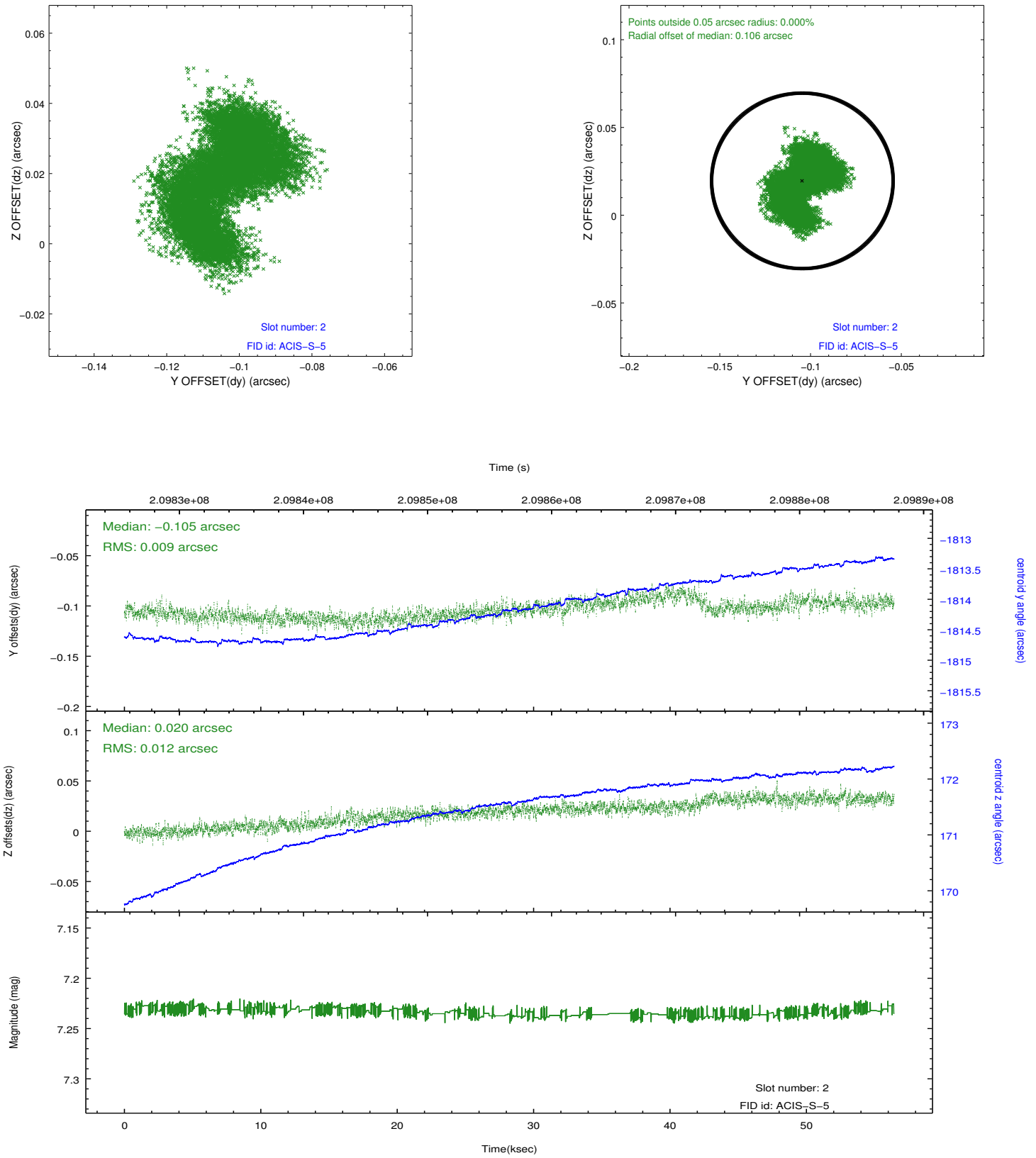
2.5.1 Slot 0



2.5.2 Slot 1



2.5.3 Slot 2



A Summary

A.1 Status

V&V Scientist	Beth Sundheim
V&V Date (YYYY-MM-DD)	2012.12.27
V&V Edition	1
V&V Disposition and Status	OK
V&V Charge Time	56.038

A.2 Comments