

V&V Reference Report

L2 ASCDS Version : 8.4.5

Observation 4855 - L2 Version 3
Chandra X-Ray Center

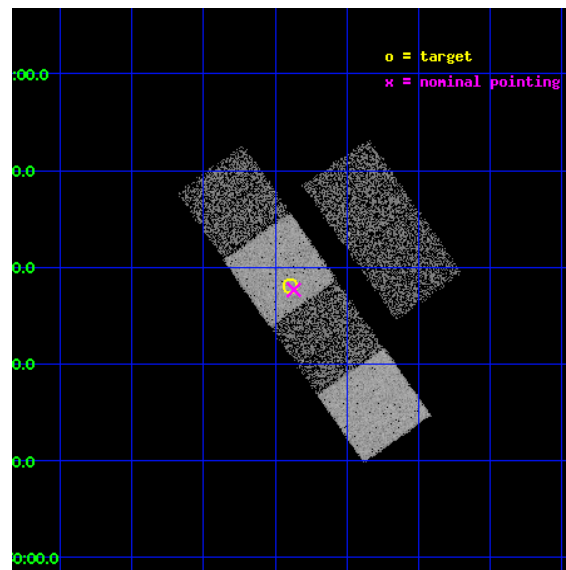
L2 Processing Date : Dec 1 2012

Contents

1	Front	2
2	OBI	3
2.1	OBI	3
2.1.1	Images	3
2.1.2	Bias	3
2.1.3	Parameters	4
2.1.4	Events	4
2.2	Compared Parameters	5
2.3	Aspect	6
2.4	Star Slots	9
2.4.1	Slot 3	9
2.4.2	Slot 4	10
2.4.3	Slot 5	11
2.4.4	Slot 6	12
2.4.5	Slot 7	13
2.5	FID Slots	14
2.5.1	Slot 0	14
2.5.2	Slot 1	15
2.5.3	Slot 2	16
A	Summary	17
A.1	Status	17
A.2	Comments	17

1 Front

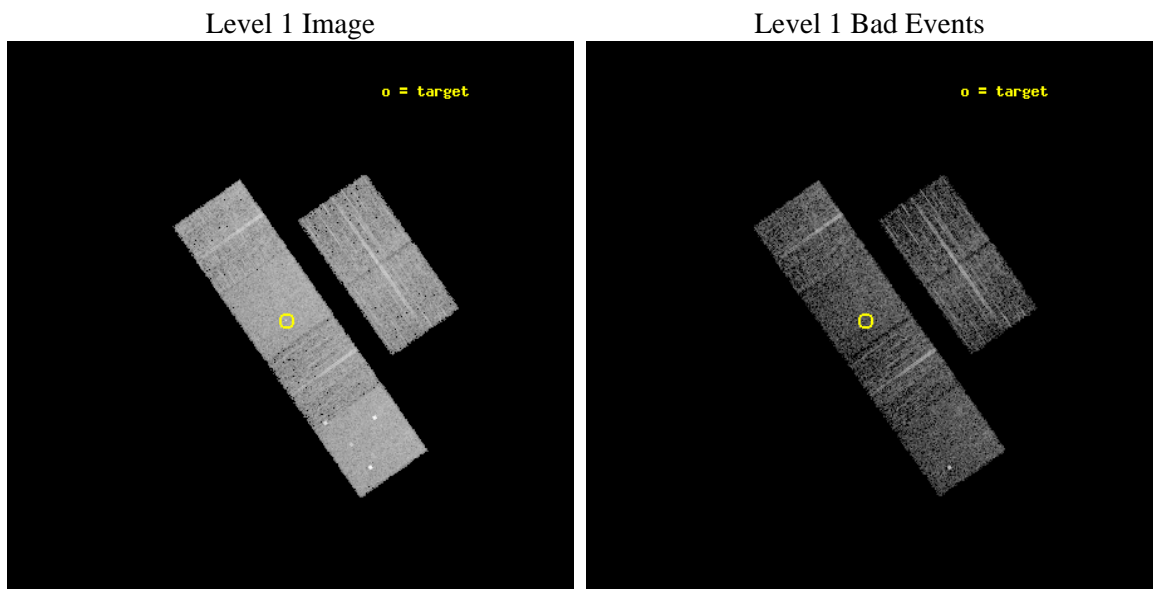
seq_num	700937	Sequence number
obs_id	4855	Observation id
title	X-ray Properties of Dust Reddened Quasars from the Sloan Digital Sky Survey	Proposal title
observer	Dr. Gordon Richards	Principal investigator
object	SDSS J132323.78-002155.2	Source name
dtcycle	0	
cycle	P	events from which exps? Prim/Second/Both
ra_targ	200.849167	Observer's specified target RA [deg]
dec_targ	-0.365333	Observer's specified target Dec [deg]
ra_nom	200.84238176227	Nominal RA [deg]
dec_nom	-0.37221159034094	Nominal Dec [deg]
roll_nom	234.89181389535	Nominal Roll [deg]
revision	3	Processing version of data
ontime	4415.1925115287	Sum of GTIs [s]
livetime	4359.284685438	Livetime [s]
ontime2	4411.9925414324	Sum of GTIs [s]
ontime3	4415.0693915188	Sum of GTIs [s]
ontime5	4415.1514715254	Sum of GTIs [s]
ontime6	4411.8694811463	Sum of GTIs [s]
ontime7	4415.1925115287	Sum of GTIs [s]
ontime8	4415.0283515453	Sum of GTIs [s]
l2events	50311	Number of level 2 events



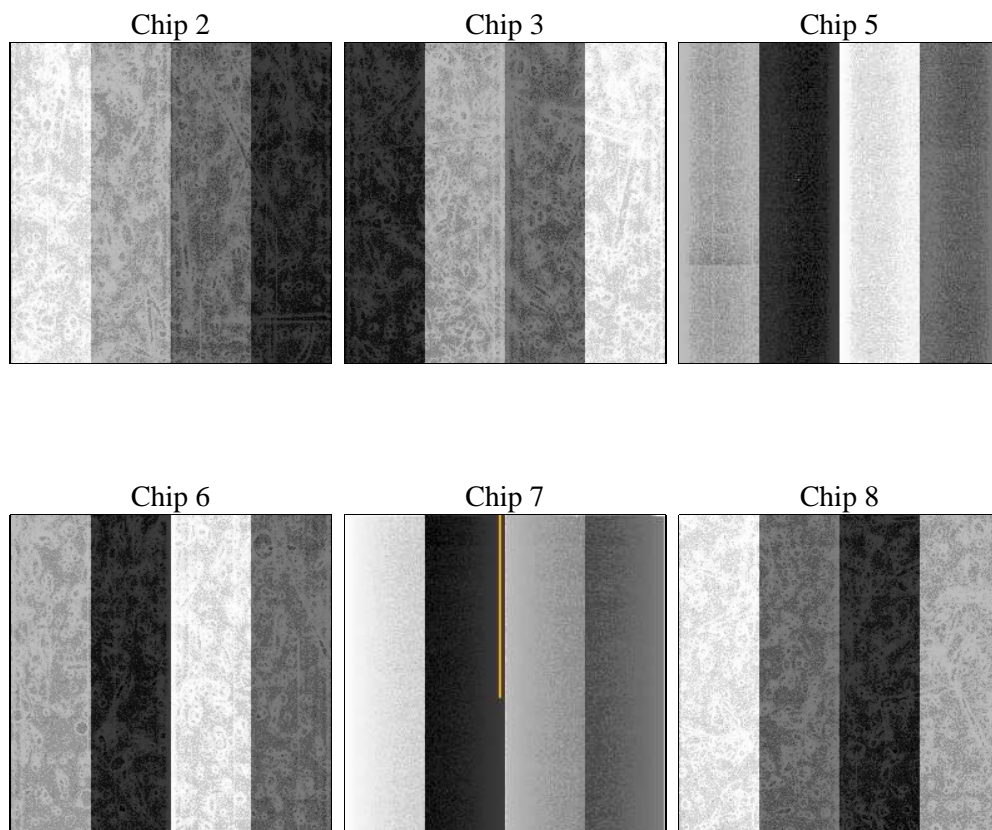
2 OBI

2.1 OBI

2.1.1 Images



2.1.2 Bias



2.1.3 Parameters

obi_num	1	Obi number	sched_exp_time	4350.000000	[s] Scheduled observation exposure time
ascdsver	8.4.5	Processing system revision	ontime	4415.1925115287	Sum of GTIs [s]
caldsver	4.5.2	 	ontime2	4411.9925414324	Sum of GTIs [s]
date	2012-12-01T04:35:08	Date and time of file creation	ontime3	4415.0693915188	Sum of GTIs [s]
revision	3	Processing version of data	ontime5	4415.1514715254	Sum of GTIs [s]
			ontime6	4411.8694811463	Sum of GTIs [s]
			ontime7	4415.1925115287	Sum of GTIs [s]
			ontime8	4415.0283515453	Sum of GTIs [s]
			l1events	229389	Number of level 1 events

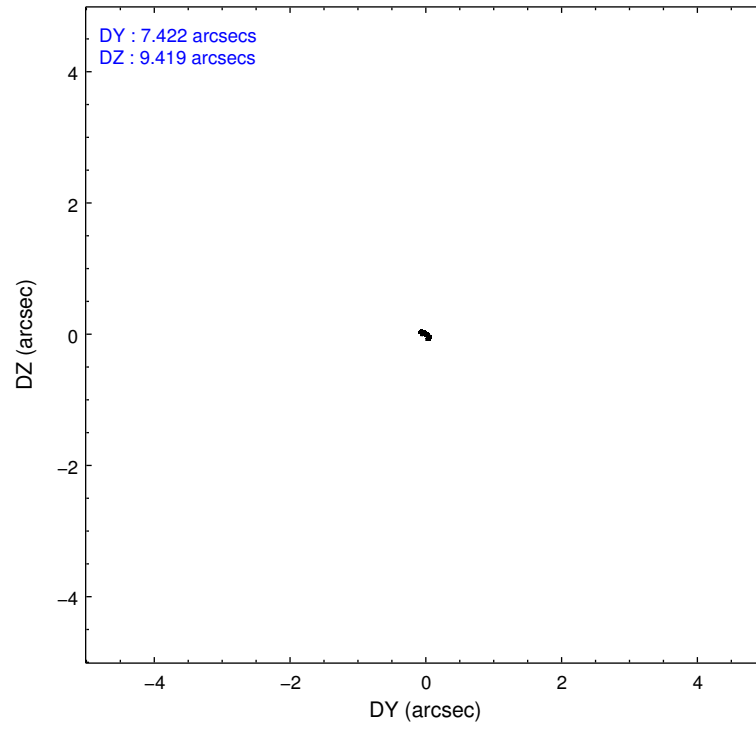
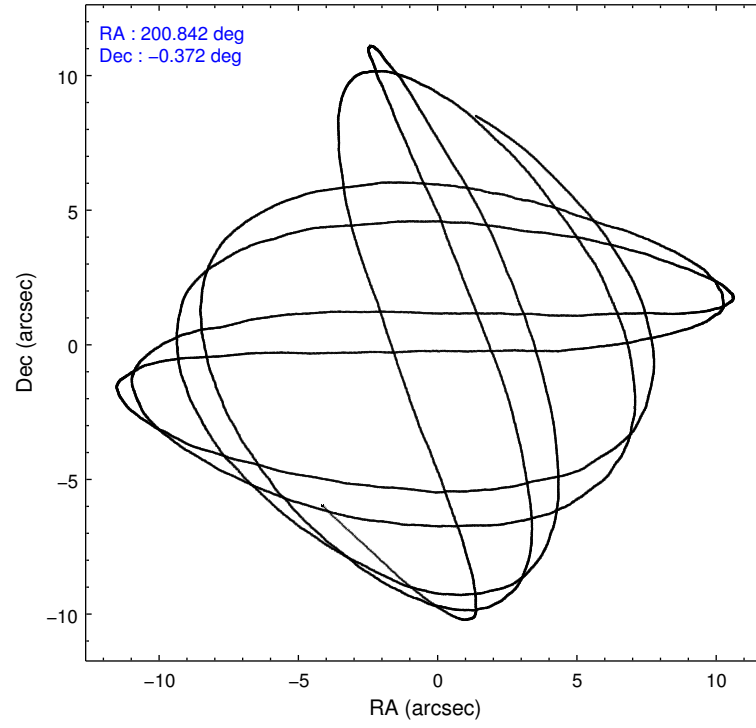
2.1.4 Events

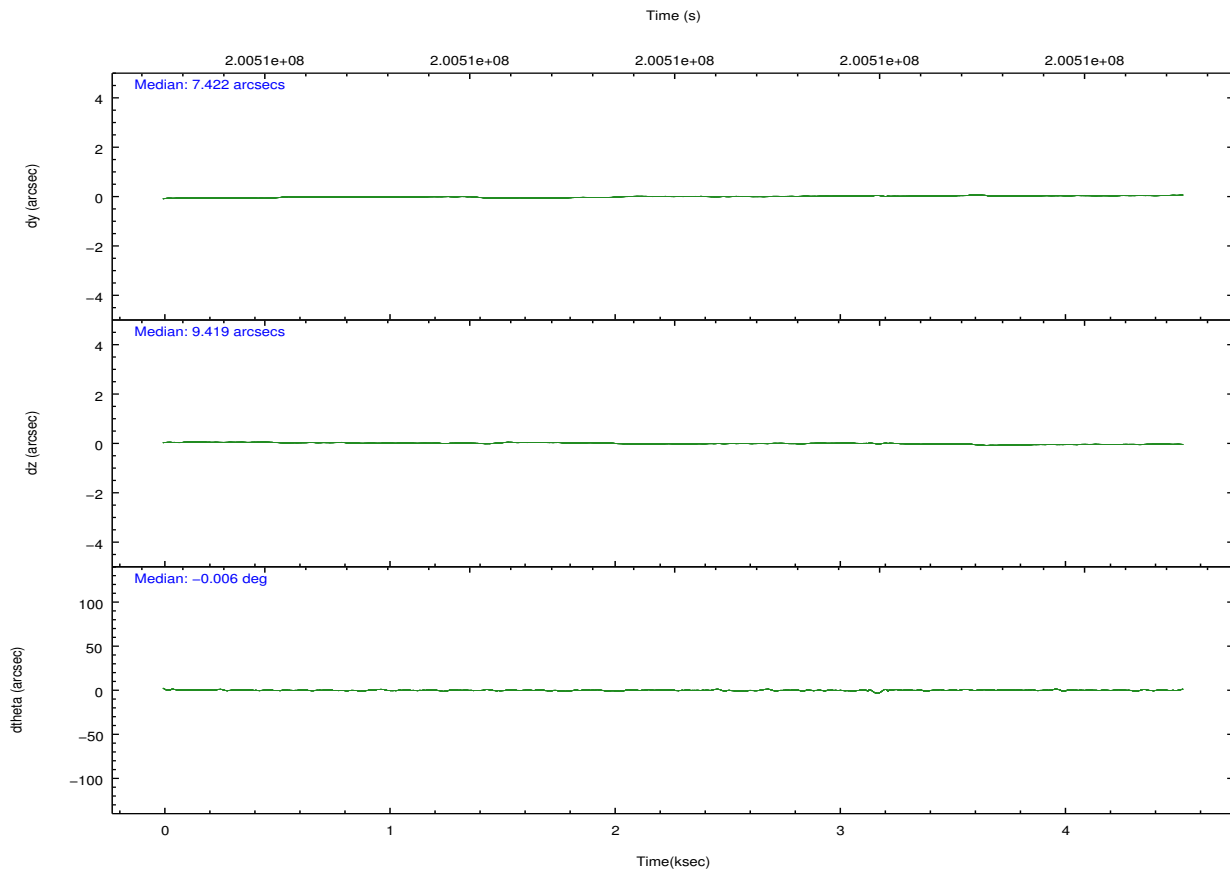
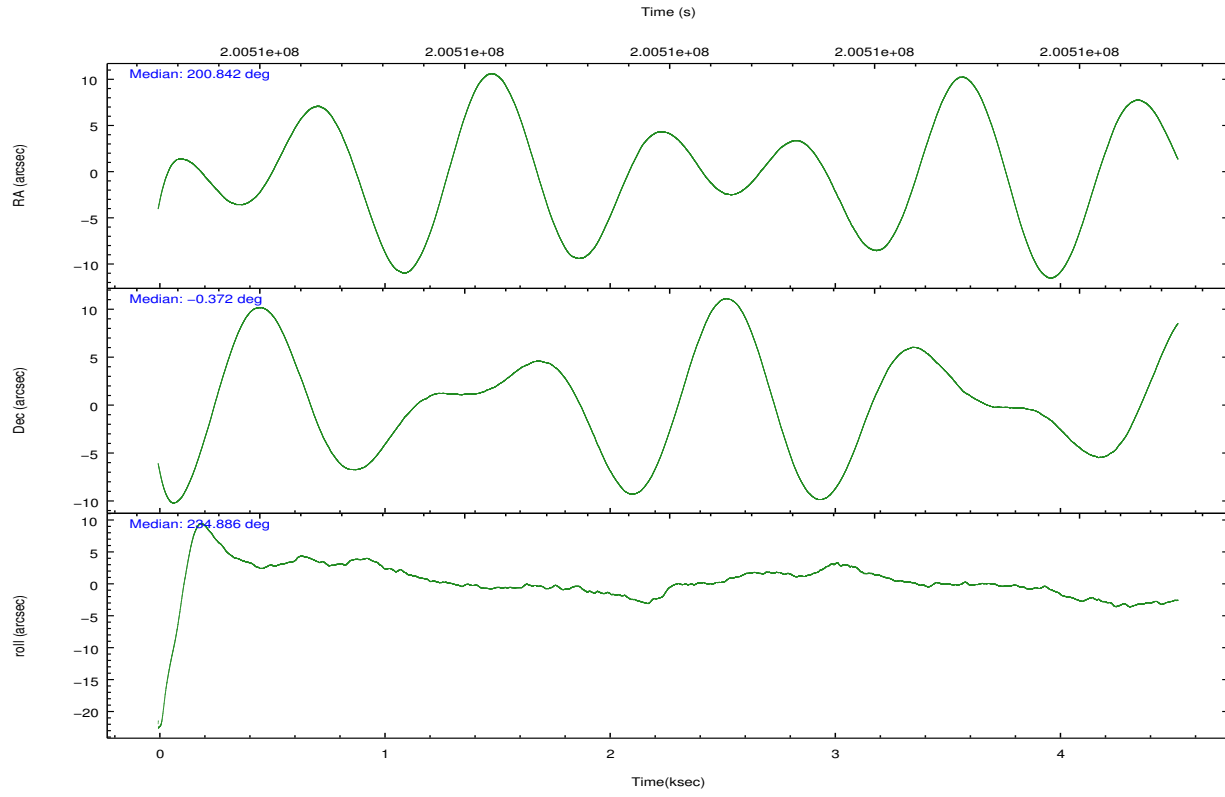
	ccd 2	ccd 3	ccd 5	ccd 6	ccd 7	ccd 8		ccd 2	ccd 3	ccd 5	ccd 6	ccd 7	ccd 8
level 1 events	32915	30908	49256	31786	43754	40770	grade 0 events	1583	1596	3461	1560	1675	2575
rejected events	29357	27306	26107	27982	25918	32393		4%	5%	7%	4%	3%	6%
rejected %	89%	88%	53%	88%	59%	79%	grade 1 events	24	16	468	16	25	27
								0%	0%	0%	0%	0%	0%
							grade 2 events	737	668	6832	747	3572	1832
								2%	2%	13%	2%	8%	4%
							grade 3 events	327	374	865	376	1542	902
								0%	1%	1%	1%	3%	2%
							grade 4 events	322	372	804	346	1594	850
								0%	1%	1%	1%	3%	2%
							grade 5 events	1290	1330	3490	1504	4194	1959
								3%	4%	7%	4%	9%	4%
							grade 6 events	597	599	11219	781	9479	2239
								1%	1%	22%	2%	21%	5%
							grade 7 events	28035	25953	22117	26456	21673	30386
								85%	83%	44%	83%	49%	74%

2.2 Compared Parameters

Parameter	Planned	Actual	Parameter	Planned	Actual
Instrument	ACIS	ACIS	Obspar format version number	7	7
Detector	ACIS-235678	ACIS-235678	Obspar file type	PREDICTED	ACTUAL
Grating	NONE	NONE	Obspar update status	NONE	UPDATED
Data mode	FAINT	FAINT	Number of optional ACIS chips dropped	0	0
Observation mode	POINTING	POINTING	On-chip summing requested	N	N
[deg] Pointing RA	200.844365	200.8423817622688	Subarray requested	NONE	NONE
[deg] Pointing Dec	-0.344993	-0.3722115903409429	Alternating exposures requested	N	N
[deg] Pointing Roll	234.735232	234.8918138953501	[s] Primary exposure time	0.000000	3.2
[mm] SIM focus pos	-0.684267	-0.6828225247311905			
[mm] SIM defocus	0	0.001444936568705701			
[mm] SIM translation stage pos	-190.132523	-190.1400660498719			
[mm] SIM translation stage offset	0	0.00754346686406393			
[s] Observation start time (MET)	200505900.184000	200504885.51399			
Observation start date	2004-05-09T16:03:56	2004-05-09T15:48:05			
[s] Observation end time (MET)	200510250.184000	200510856.13925			
Observation end date	2004-05-09T17:16:26	2004-05-09T17:27:36			
Read mode	TIMED	TIMED			

2.3 Aspect



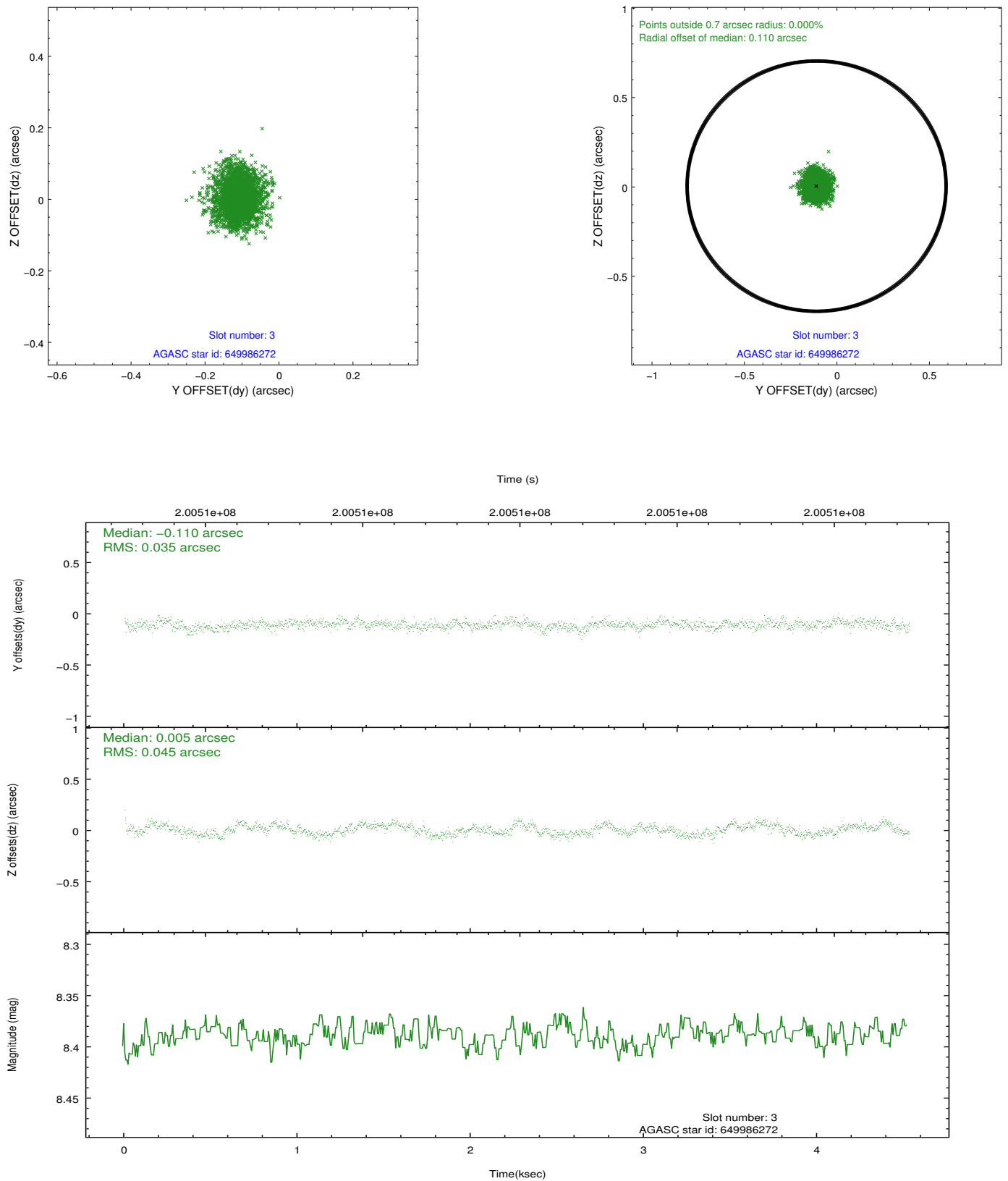


Slot Statistics

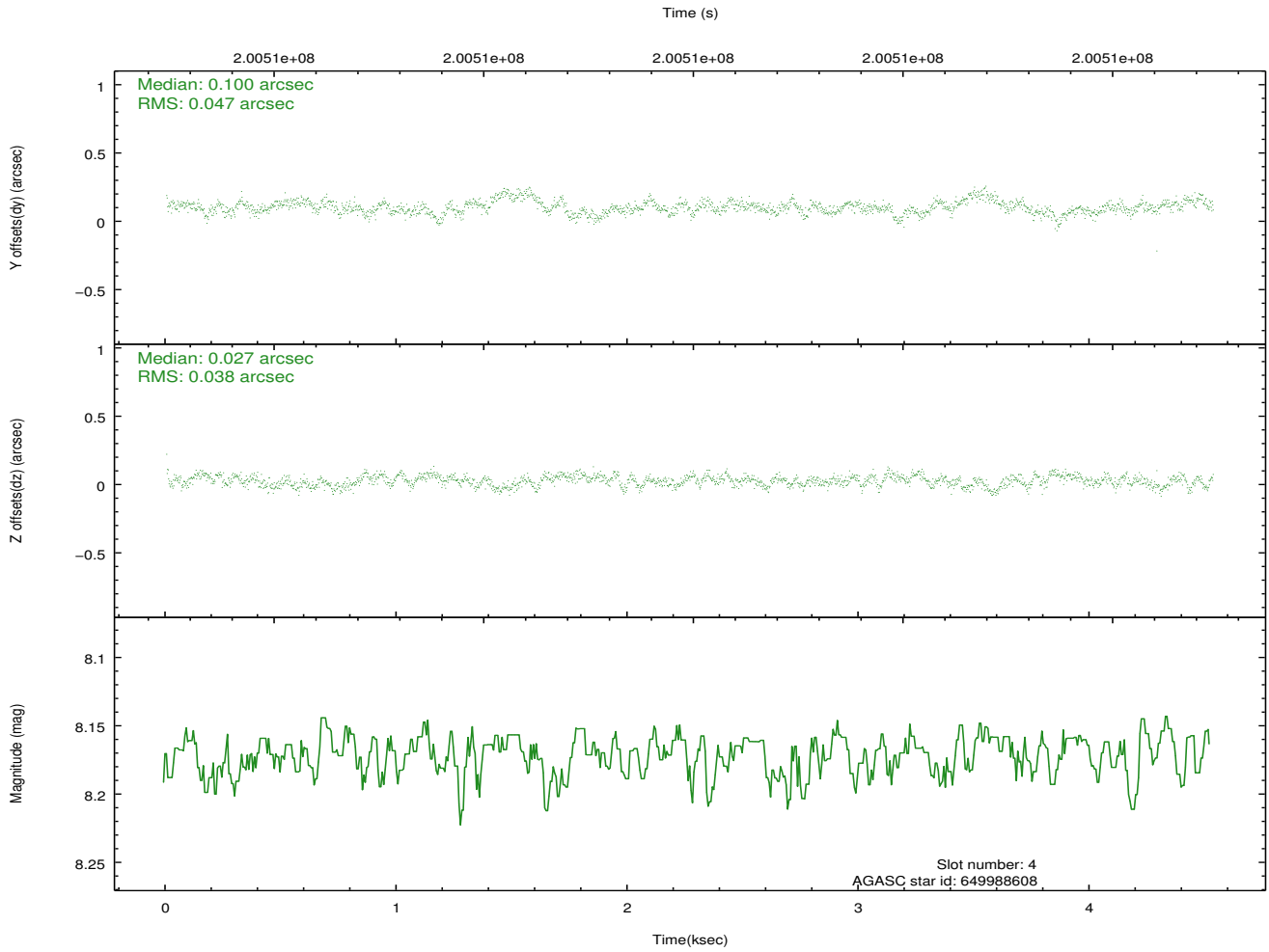
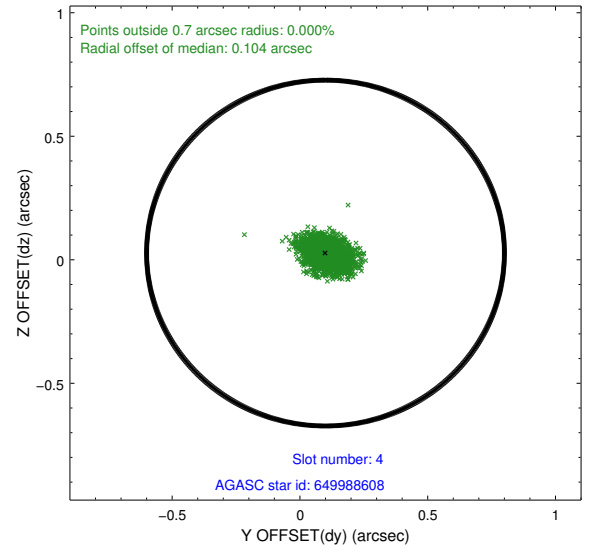
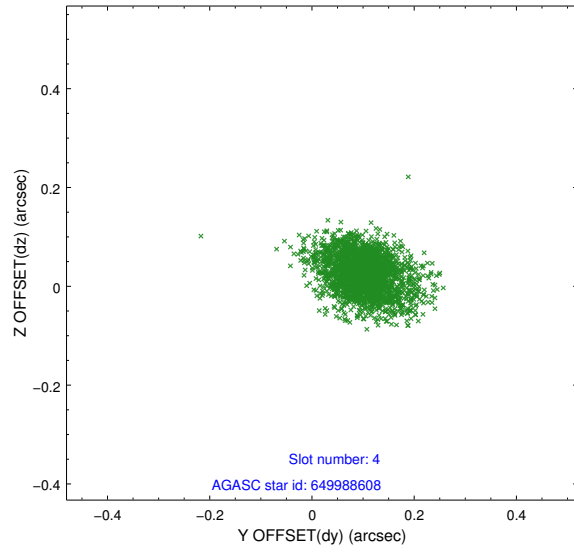
slot	status	id	mag	n_pts	med_dy	med_dz	dr1	dr2	ra	dec	mean_y	mean_z
0	FID	ACIS-S-1	7.18	1104	0.041	-0.021	0.007	0.011	0.000000	0.000000	935.91	-1726.29
1	FID	ACIS-S-5	7.24	1104	-0.069	0.035	0.006	0.011	0.000000	0.000000	-1812.45	169.91
2	FID	ACIS-S-6	7.34	1104	0.007	-0.002	0.007	0.013	0.000000	0.000000	399.95	815.38
3	GUIDE	649986272	8.39	2210	-0.110	0.005	0.061	0.096	200.339626	-0.585221	1755.47	-984.19
4	GUIDE	649988608	8.17	2210	0.100	0.027	0.062	0.109	200.620062	-0.578825	1154.72	-173.80
5	GUIDE	649991752	8.29	2209	0.028	-0.034	0.069	0.108	201.087534	-0.315852	-590.21	653.79
6	GUIDE	649993016	8.85	2209	0.017	0.010	0.070	0.112	201.437132	-0.453924	-912.07	1968.71
7	GUIDE	649989360	10.41	2206	-0.036	-0.007	0.162	0.270	201.723817	-0.254610	-2093.90	2397.85

2.4 Star Slots

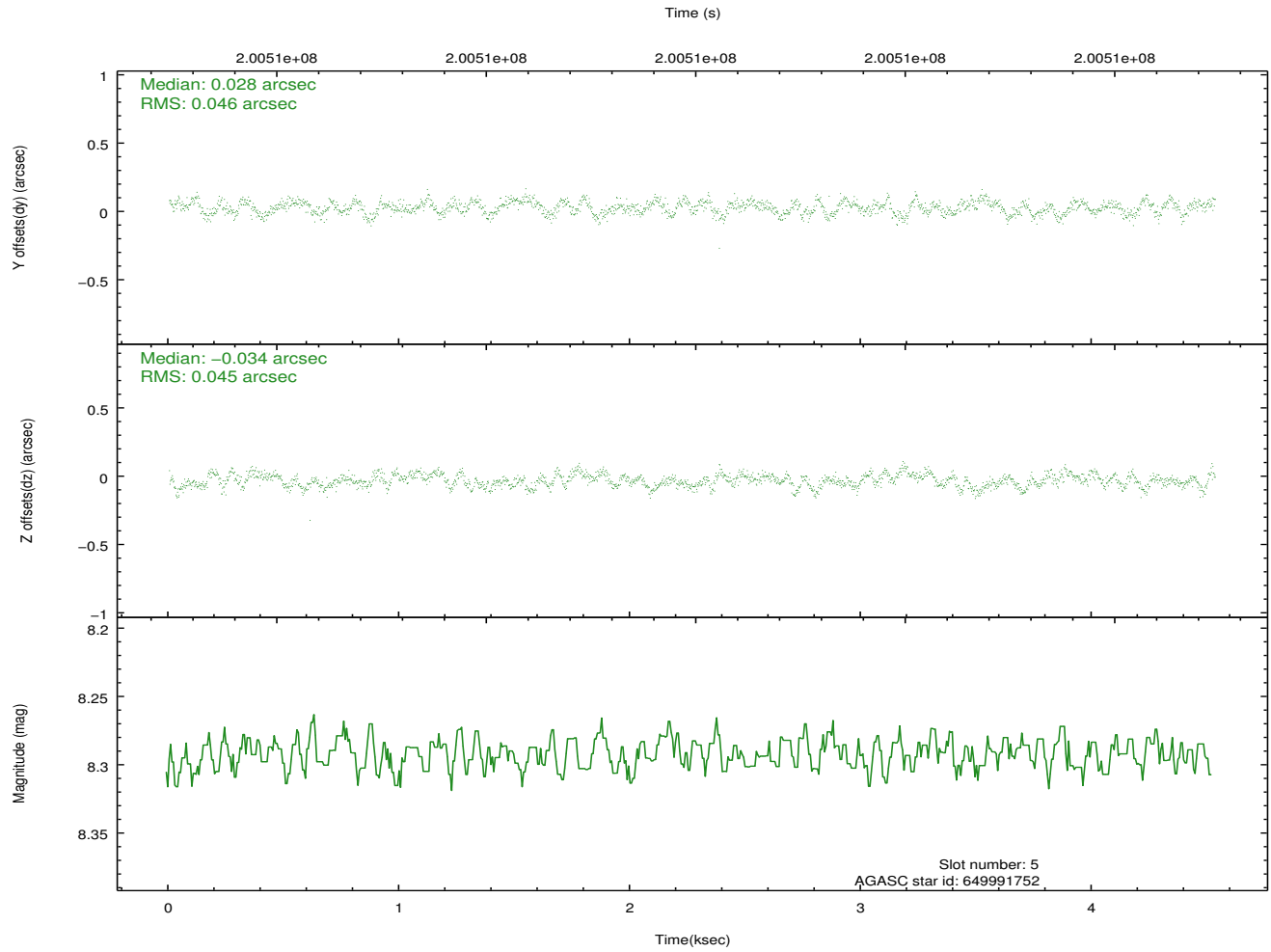
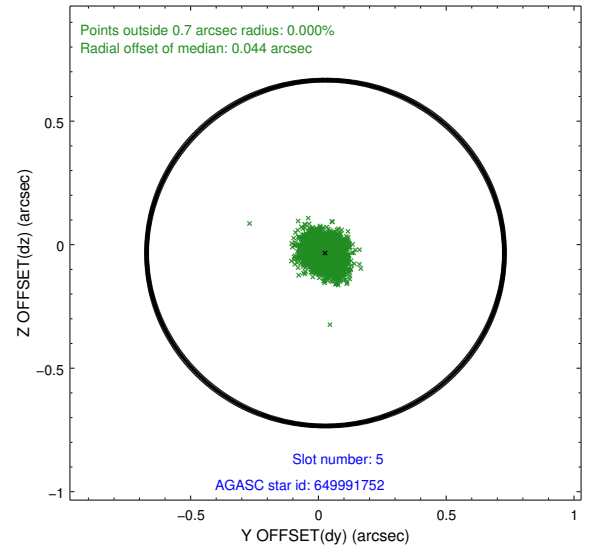
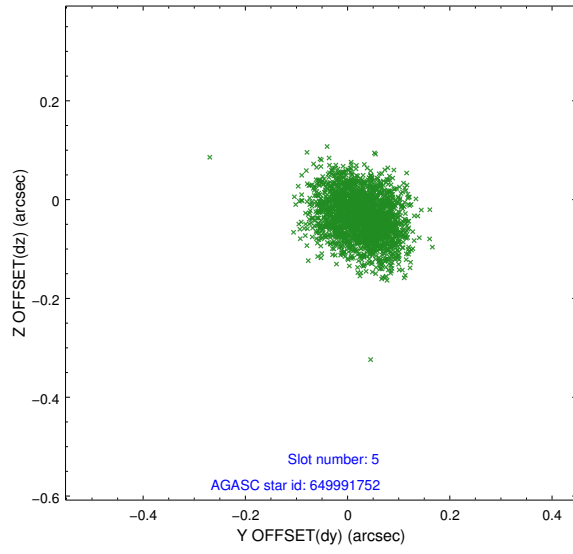
2.4.1 Slot 3



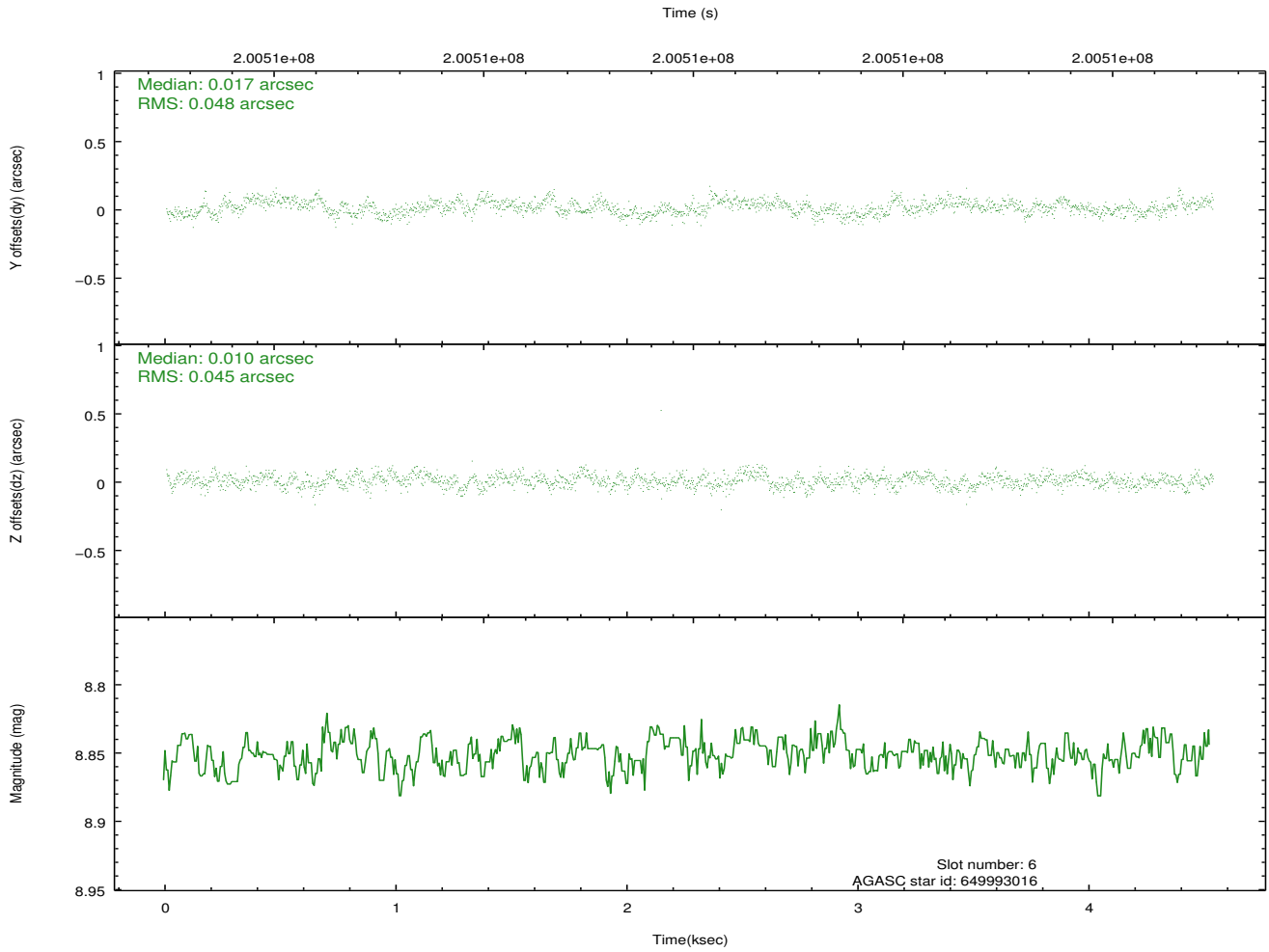
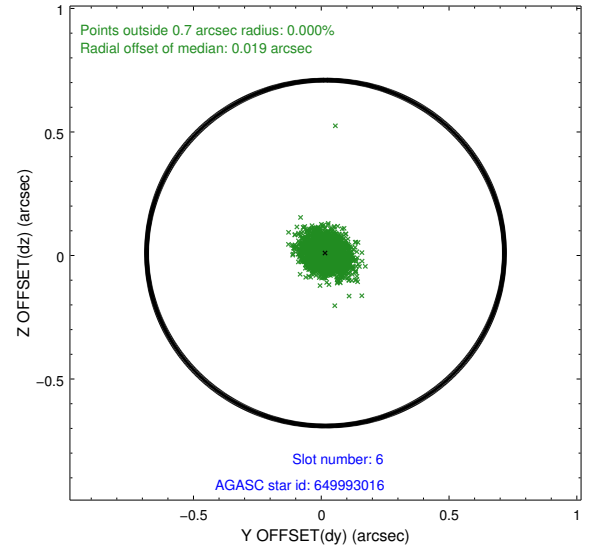
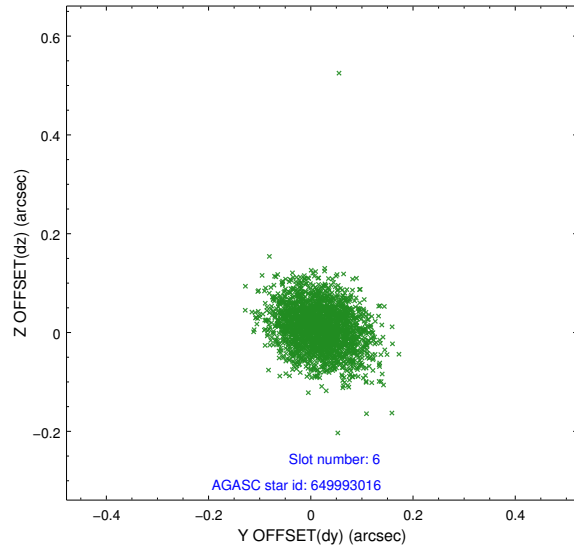
2.4.2 Slot 4



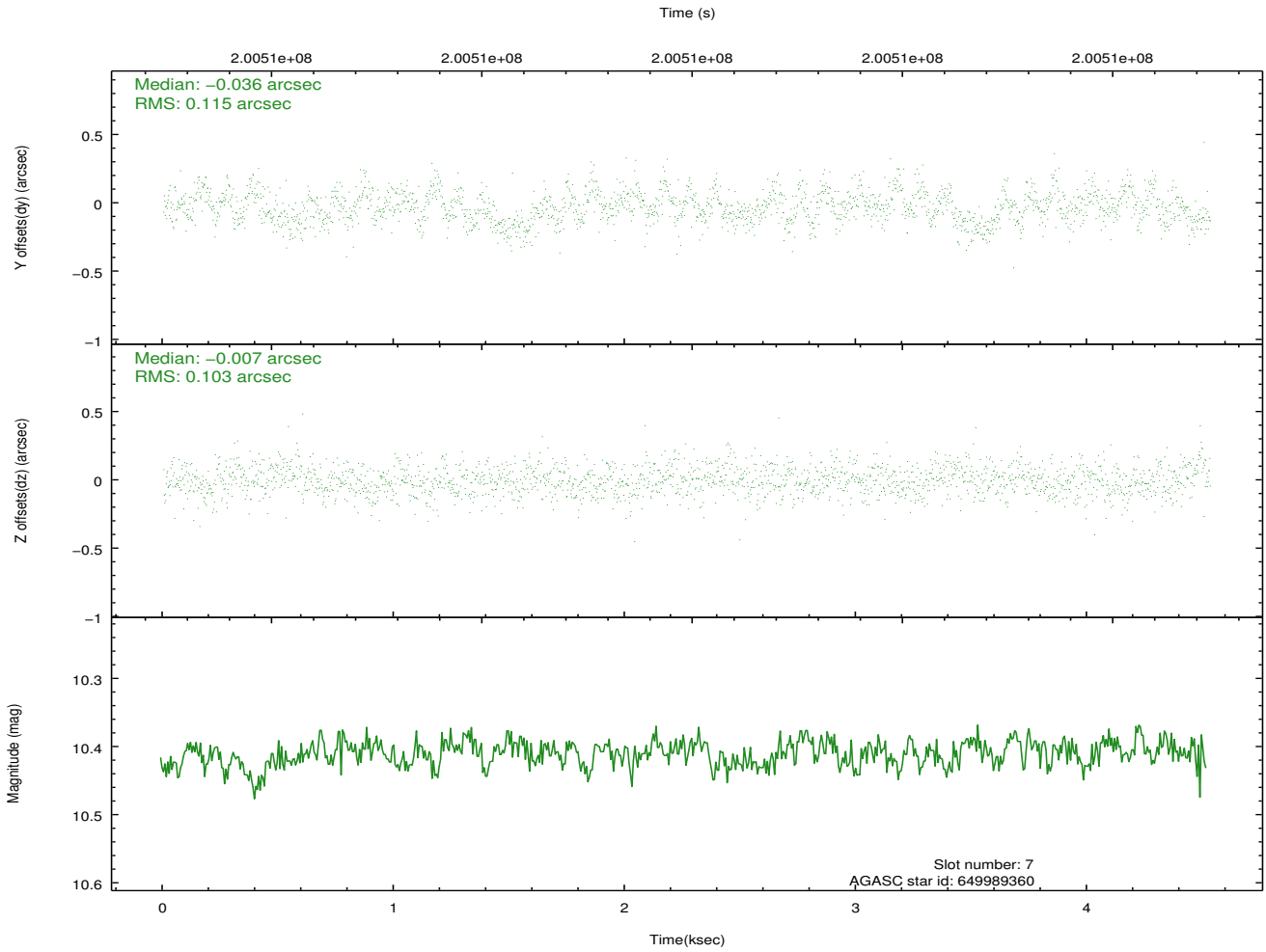
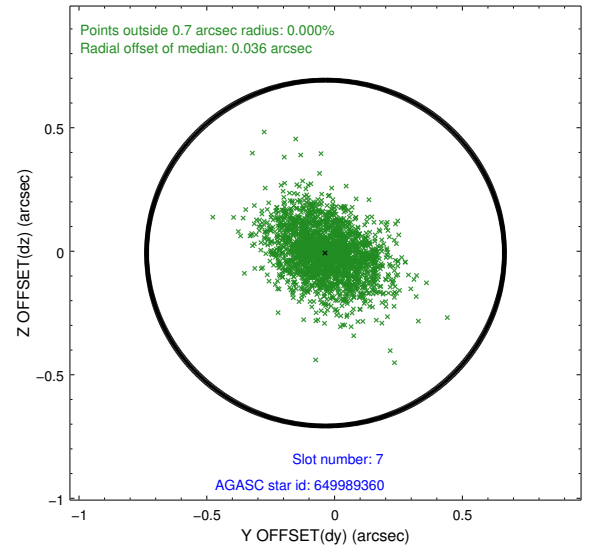
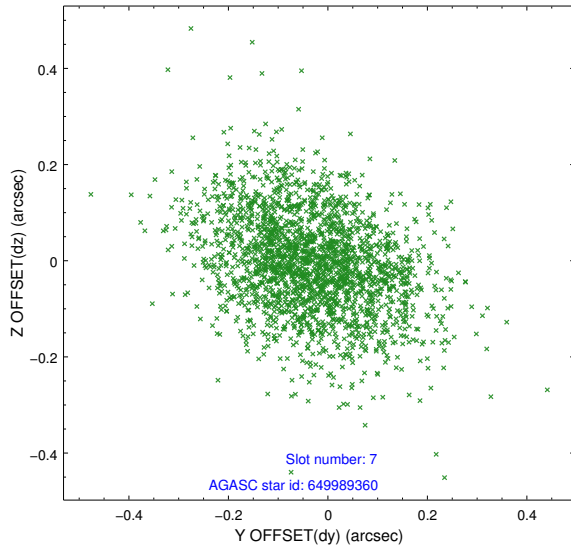
2.4.3 Slot 5



2.4.4 Slot 6

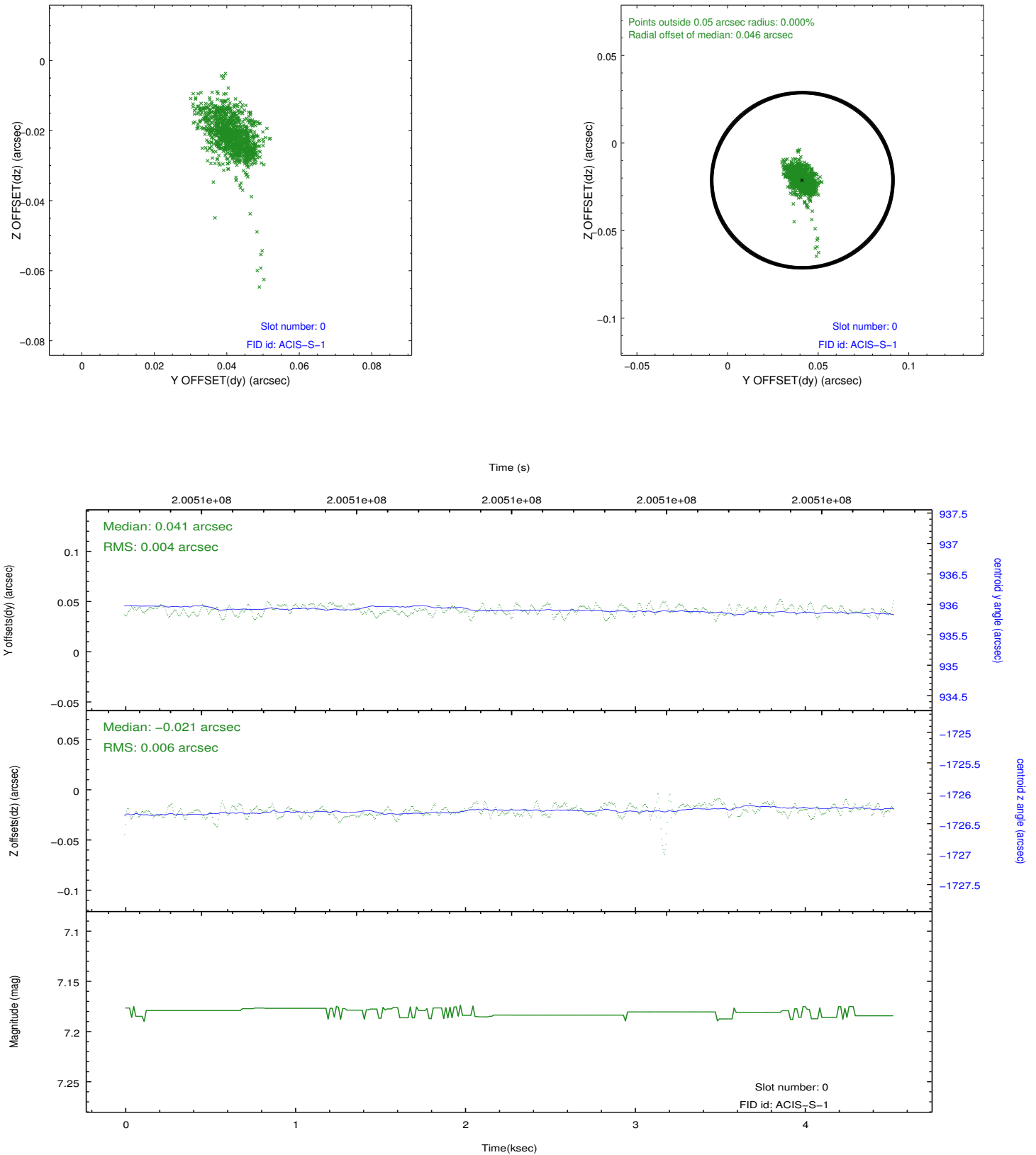


2.4.5 Slot 7

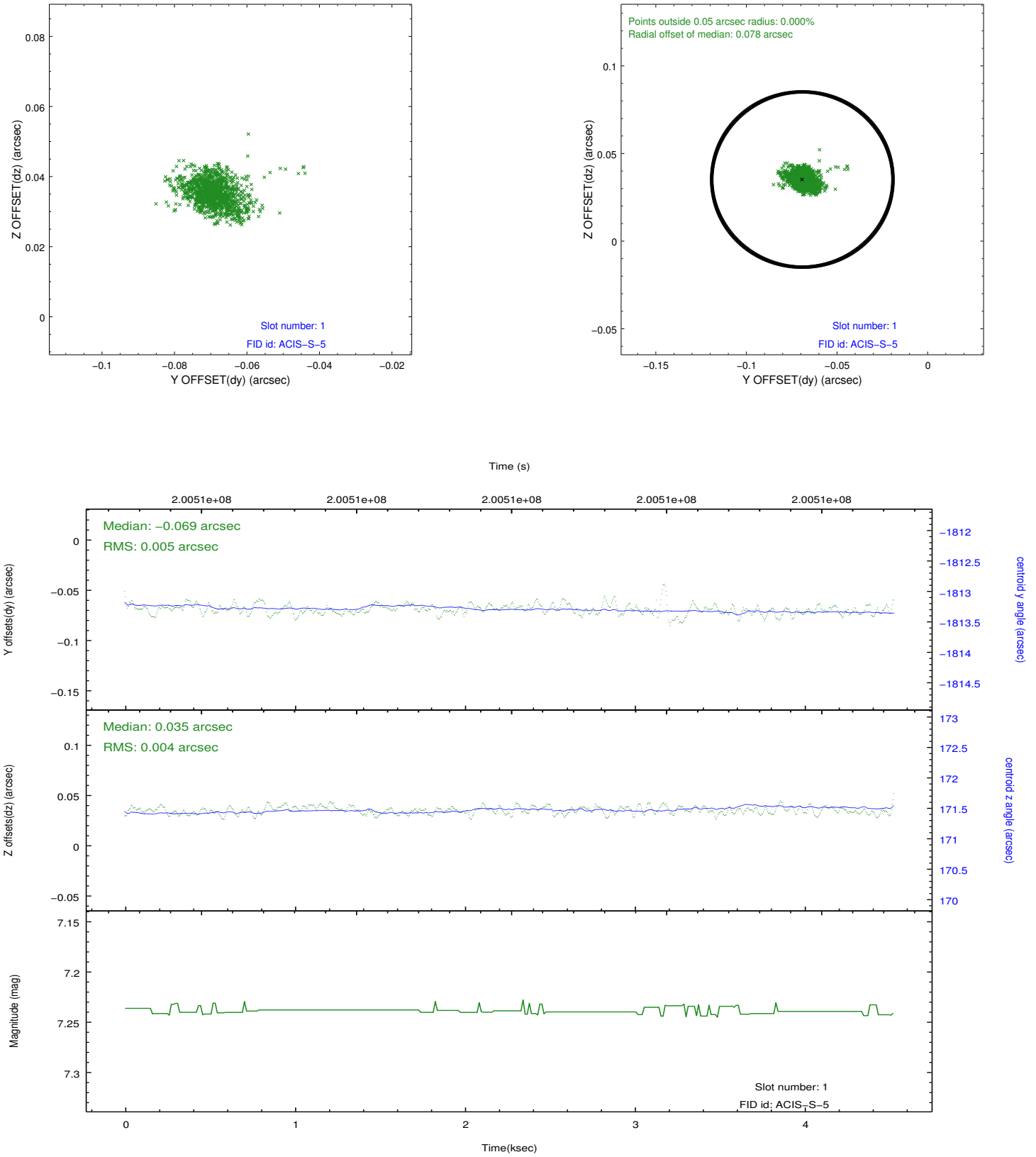


2.5 FID Slots

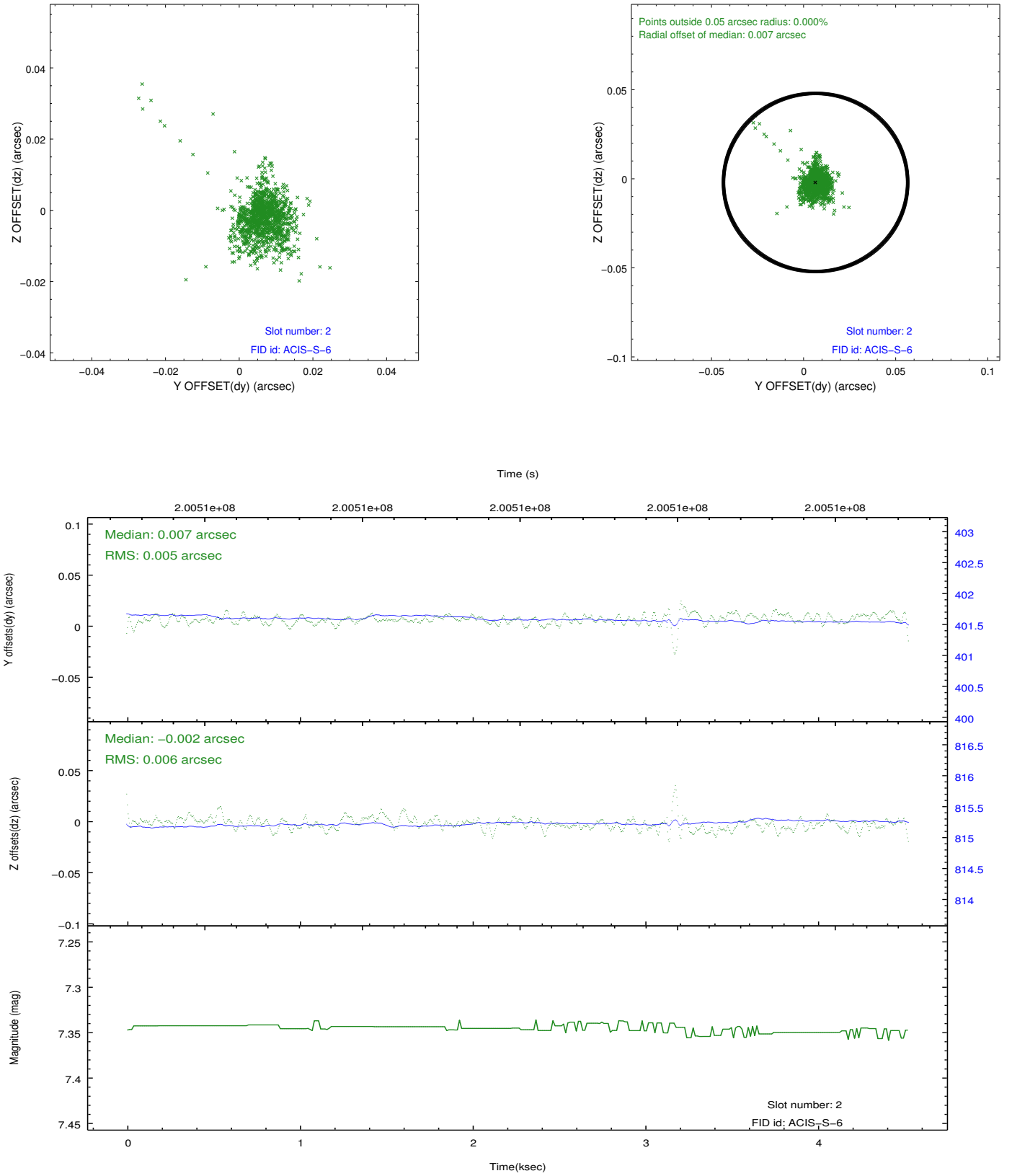
2.5.1 Slot 0



2.5.2 Slot 1



2.5.3 Slot 2



A Summary

A.1 Status

V&V Scientist	Beth Sundheim
V&V Date (YYYY-MM-DD)	2012.12.06
V&V Edition	1
V&V Disposition and Status	OK
V&V Charge Time	4.415

A.2 Comments