

V&V Reference Report

L2 ASCDS Version : 7.6.7.2

Observation 4785 - L2 Version 001
Chandra X-Ray Center

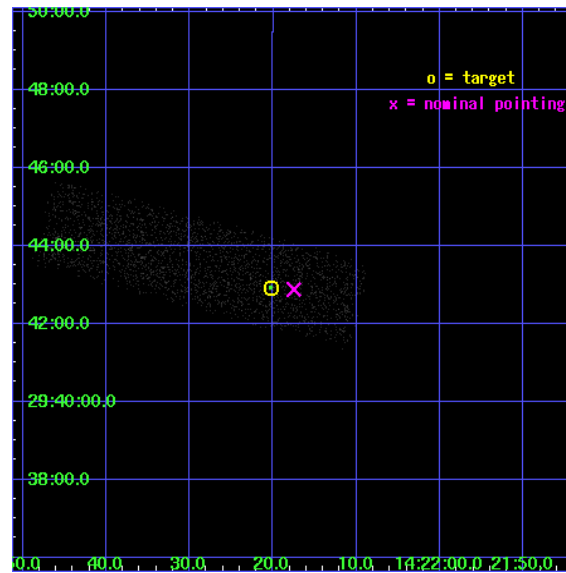
L2 Processing Date : May 18 2006

Contents

1	Front	2
2	OBI	3
2.1	OBI	3
2.1.1	Images	3
2.1.2	Bias	3
2.1.3	Parameters	4
2.1.4	Events	4
2.2	Compared Parameters	5
2.3	Aspect	6
2.4	Star Slots	9
2.4.1	Slot 3	9
2.4.2	Slot 4	10
2.4.3	Slot 5	11
2.4.4	Slot 6	12
2.4.5	Slot 7	13
2.5	FID Slots	14
2.5.1	Slot 0	14
2.5.2	Slot 1	15
2.5.3	Slot 2	16
3	Point Sources	17
A	Summary	18
A.1	Status	18
A.2	Comments	18

1 Front

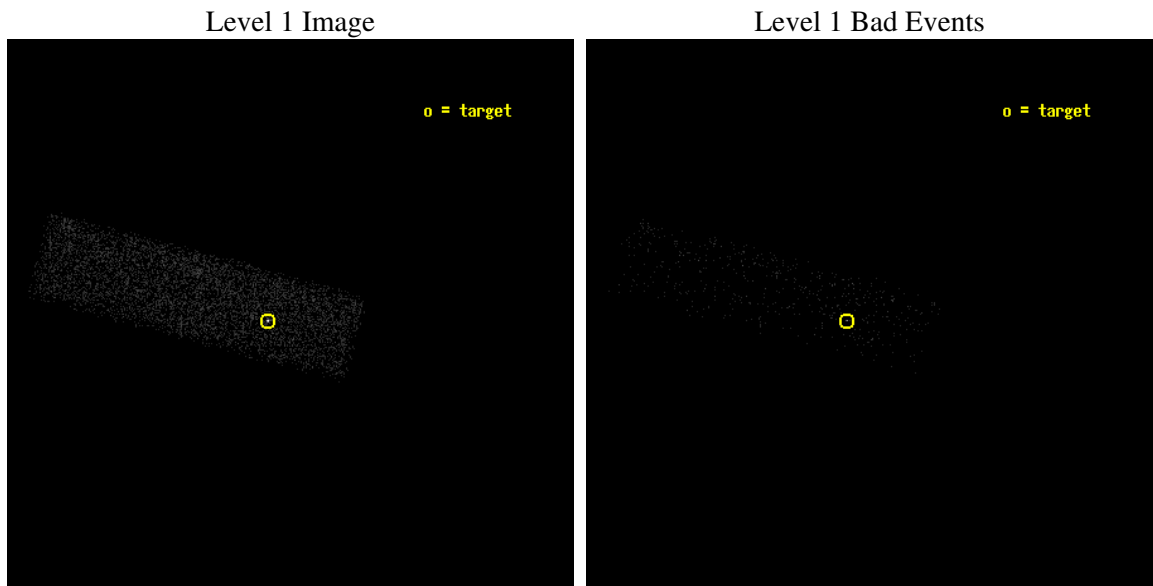
seq_num	700868
obs_id	4785
title	Anchoring the AGN X-ray Luminosity Function
observer	Dr. JOHN SALZER
object	F1420-3039
dtcycle	0
cycle	P
ra_targ	215.584167
dec_targ	29.715417
ra_nom	215.5730119834
dec_nom	29.714579025638
roll_nom	194.97340642299
revision	2
ontime	2828.8000421524
livetime	2690.763856323
ontime7	2828.8000421524
l2events	3359



2 OBI

2.1 OBI

2.1.1 Images



2.1.2 Bias

Chip 7



2.1.3 Parameters

obi_num	0
ascdsver	7.6.7.2
caldbver	3.2.2
date	2006-05-18T21:42:21
revision	2

sched_exp_time	2000.000000
ontime	2830.0687549412
ontime7	2830.0687549412
l1events	7553

2.1.4 Events

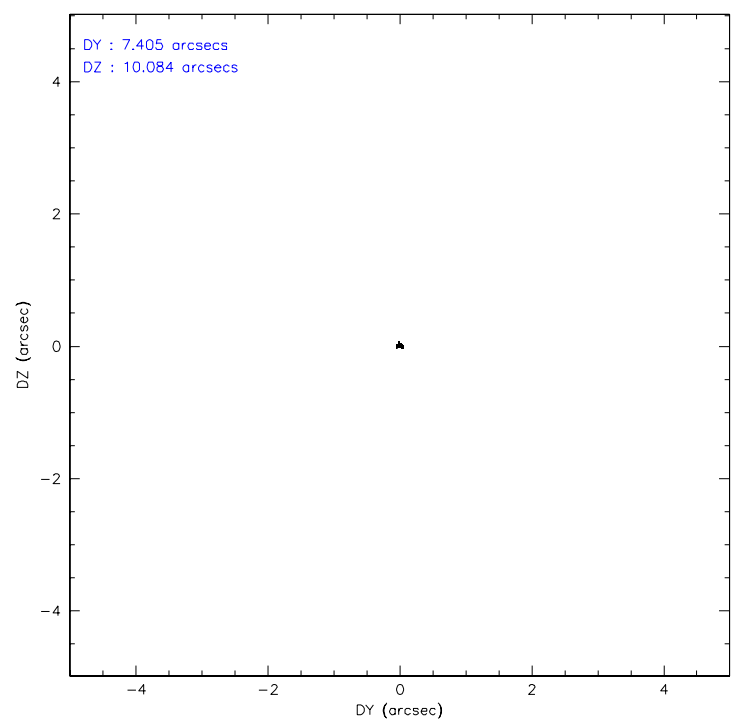
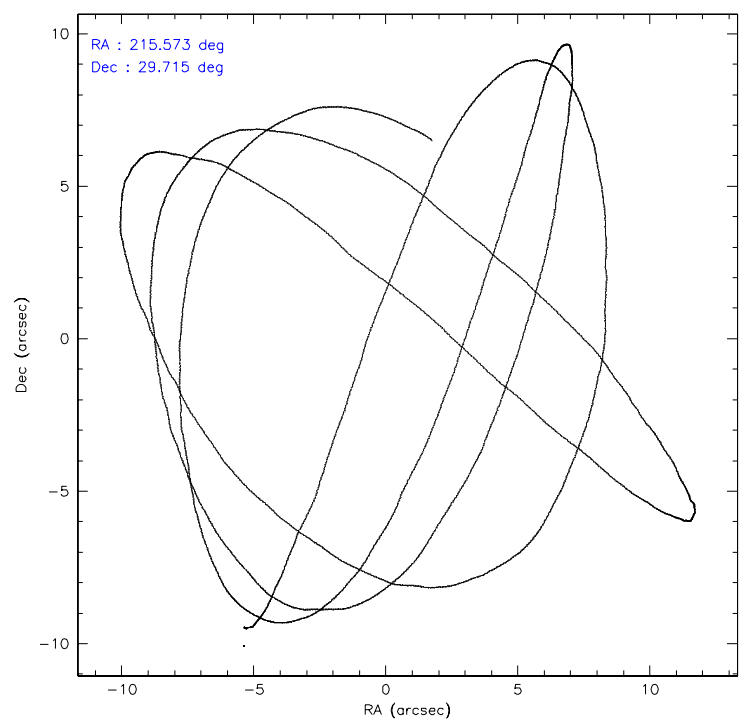
	ccd 7
level 1 events	7553
rejected events	4091
rejected %	54%

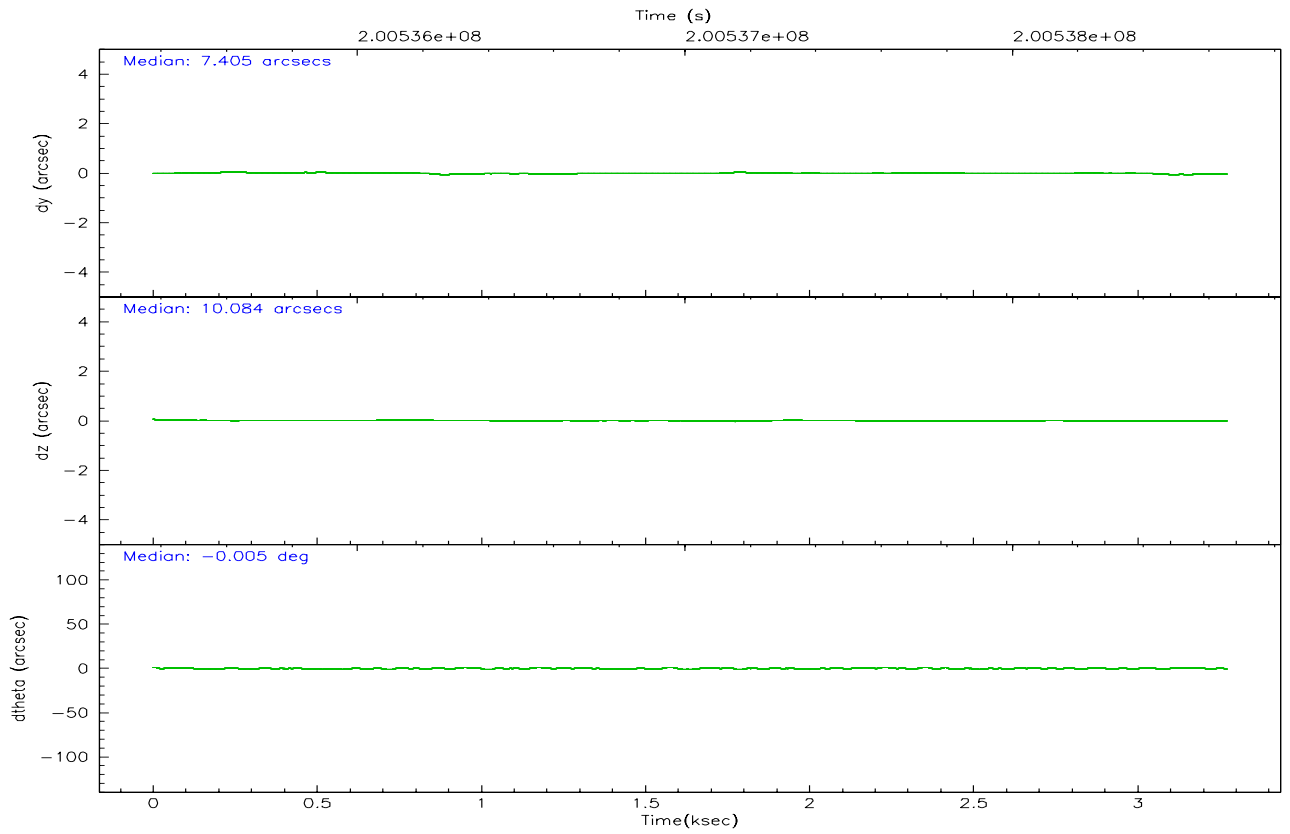
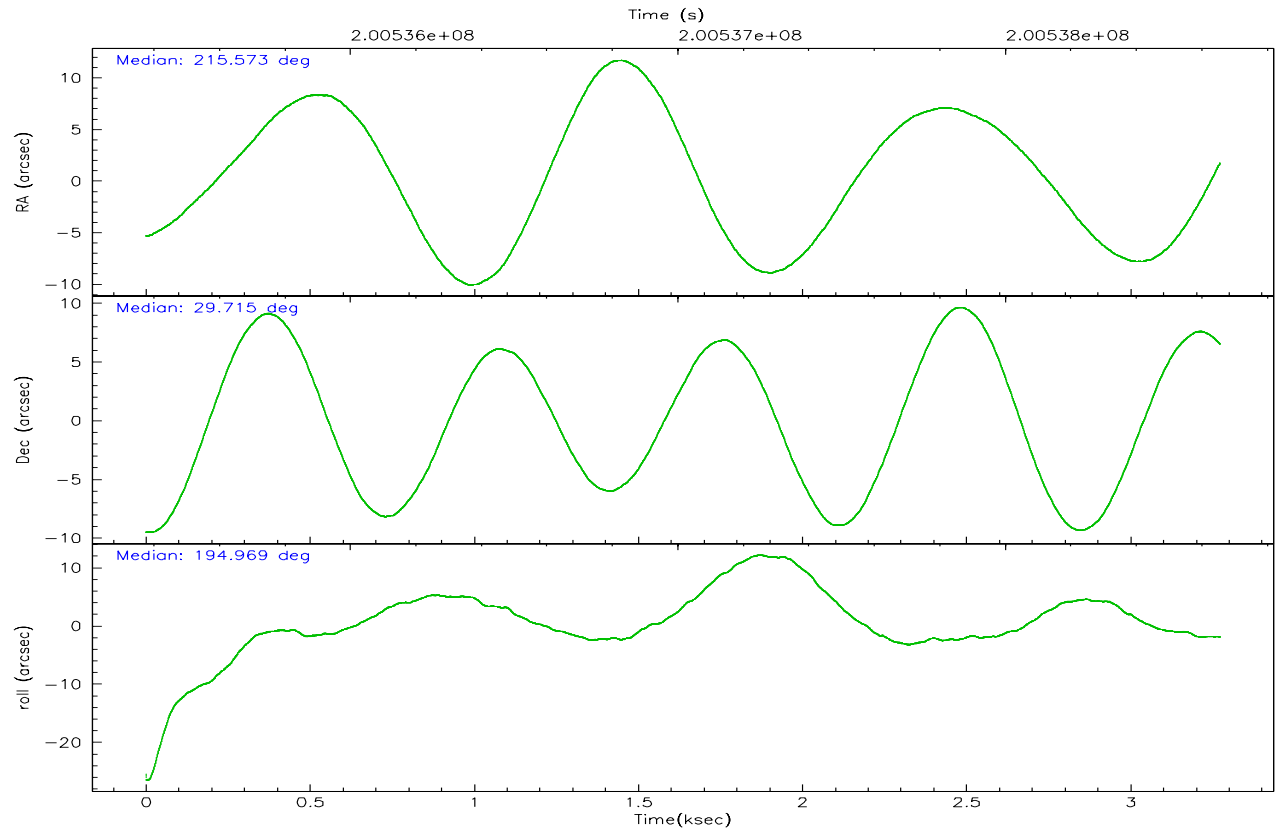
	ccd 7
grade 0 events	435
	5%
grade 1 events	10
	0%
grade 2 events	816
	10%
grade 3 events	287
	3%
grade 4 events	278
	3%
grade 5 events	490
	6%
grade 6 events	1648
	21%
grade 7 events	3589
	47%

2.2 Compared Parameters

Parameter	Planned	Actual	Parameter	Planned	Actual
Instrument	ACIS	ACIS	Obspar format version number	6	6
Detector	ACIS-7	ACIS-7	Obspar file type	PREDICTED	ACTUAL
Grating	NONE	NONE	Obspar update status	NONE	UPDATED
Data mode	FAINT	FAINT	On-chip summing requested	N	N
Observation mode	POINTING	POINTING	Subarray requested	1/4	1/4
Pointing RA	215.594962	215.5730119833996	Subarray start row	0	385
Pointing Dec	29.734100	29.71457902563844	Subarray row count	1024	256
Pointing Roll	194.805889	194.9734064229898	Alternating exposures requested	N	N
SIM focus pos (mm)	-0.684267	-0.6828225247311905	Primary exposure time	0.000000	0.8
SIM defocus (mm)	0	0.001444936568705701			
SIM translation stage pos (mm)	-190.132523	-190.1400660498719			
SIM translation stage offset (mm)	0	0.00754346686406393			
Observation start time	200536648.184000	200535141.97782			
Observation start date	2004-05-10T00:36:24	2004-05-10T00:12:21			
Observation end time	200538648.184000	200539820.07803			
Observation end date	2004-05-10T01:09:44	2004-05-10T01:30:20			
Read mode	TIMED	TIMED			

2.3 Aspect



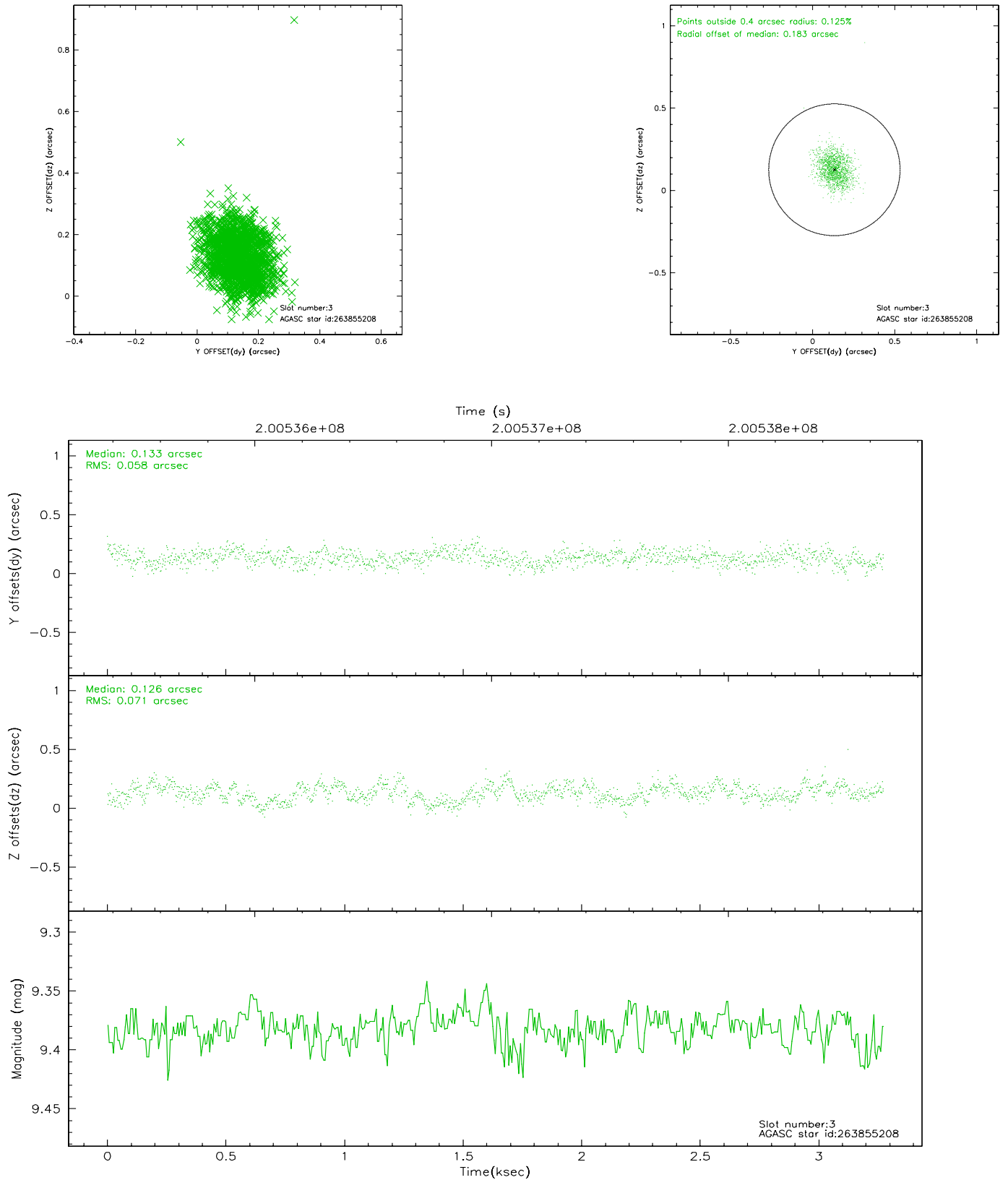


Slot Statistics

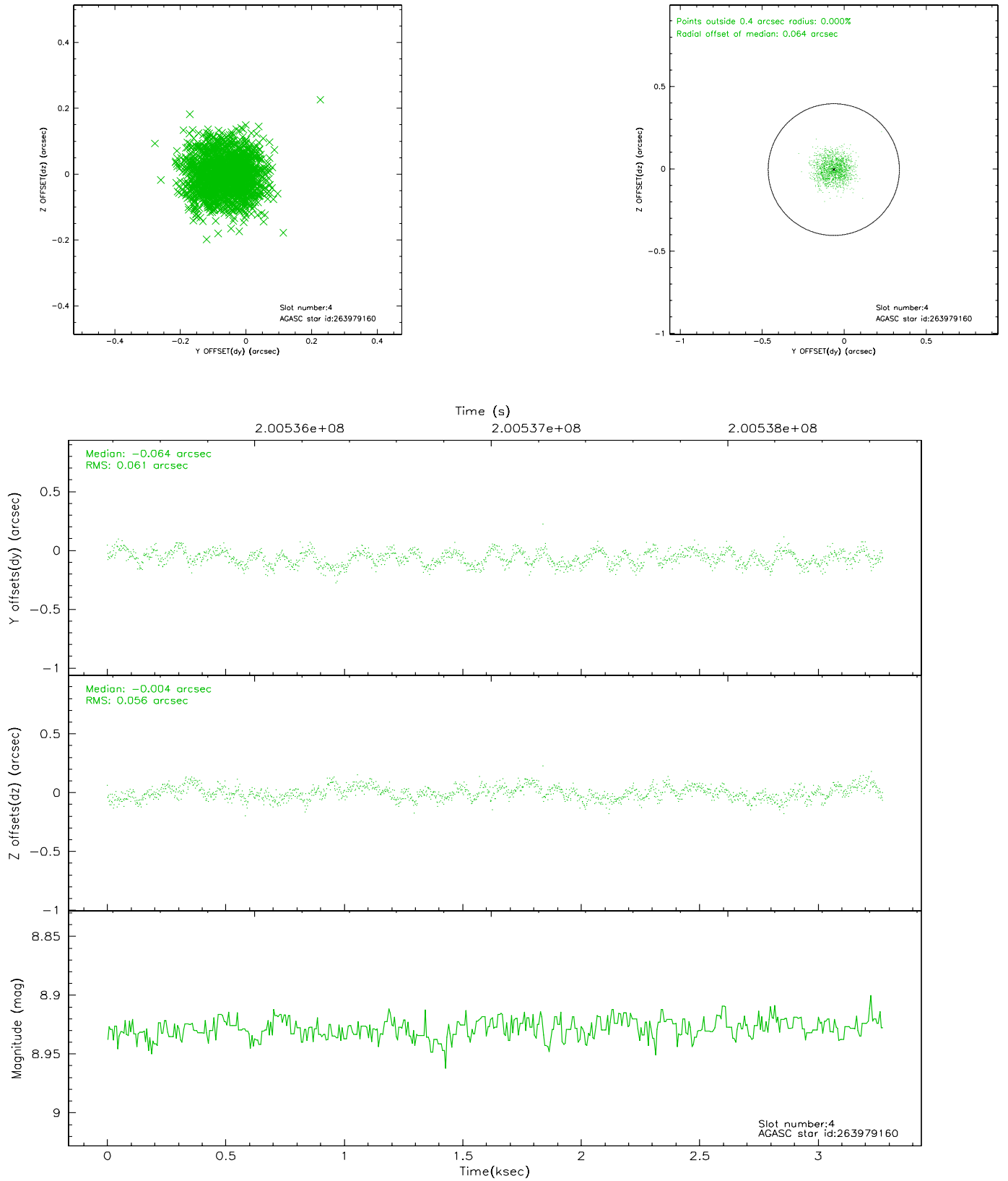
slot	status	id	mag	n_pts	med_dy	med_dz	dr1	dr2	ra	dec	mean_y	mean_z
0	FID	ACIS-S-2	7.10	798	-0.031	-0.008	0.005	0.009	0.000000	0.000000	-760.16	-1731.36
1	FID	ACIS-S-4	7.20	799	0.037	0.015	0.006	0.010	0.000000	0.000000	2152.27	175.19
2	FID	ACIS-S-6	7.34	799	-0.033	-0.000	0.006	0.011	0.000000	0.000000	404.27	814.75
3	GUIDE	263855208	9.38	1597	0.133	0.126	0.095	0.151	214.838802	29.655405	2357.55	-337.55
4	GUIDE	263979160	8.93	1598	-0.064	-0.004	0.089	0.137	216.152552	29.829165	-1770.78	109.97
5	GUIDE	263982648	9.60	1598	-0.053	-0.026	0.121	0.188	216.033845	29.161290	-808.78	2344.04
6	GUIDE	334633912	9.28	1597	-0.169	0.049	0.108	0.171	216.062799	30.458981	-2071.60	-2153.15
7	GUIDE	333714064	10.08	1596	0.156	-0.145	0.142	0.243	214.680175	30.106893	2407.57	-2037.57

2.4 Star Slots

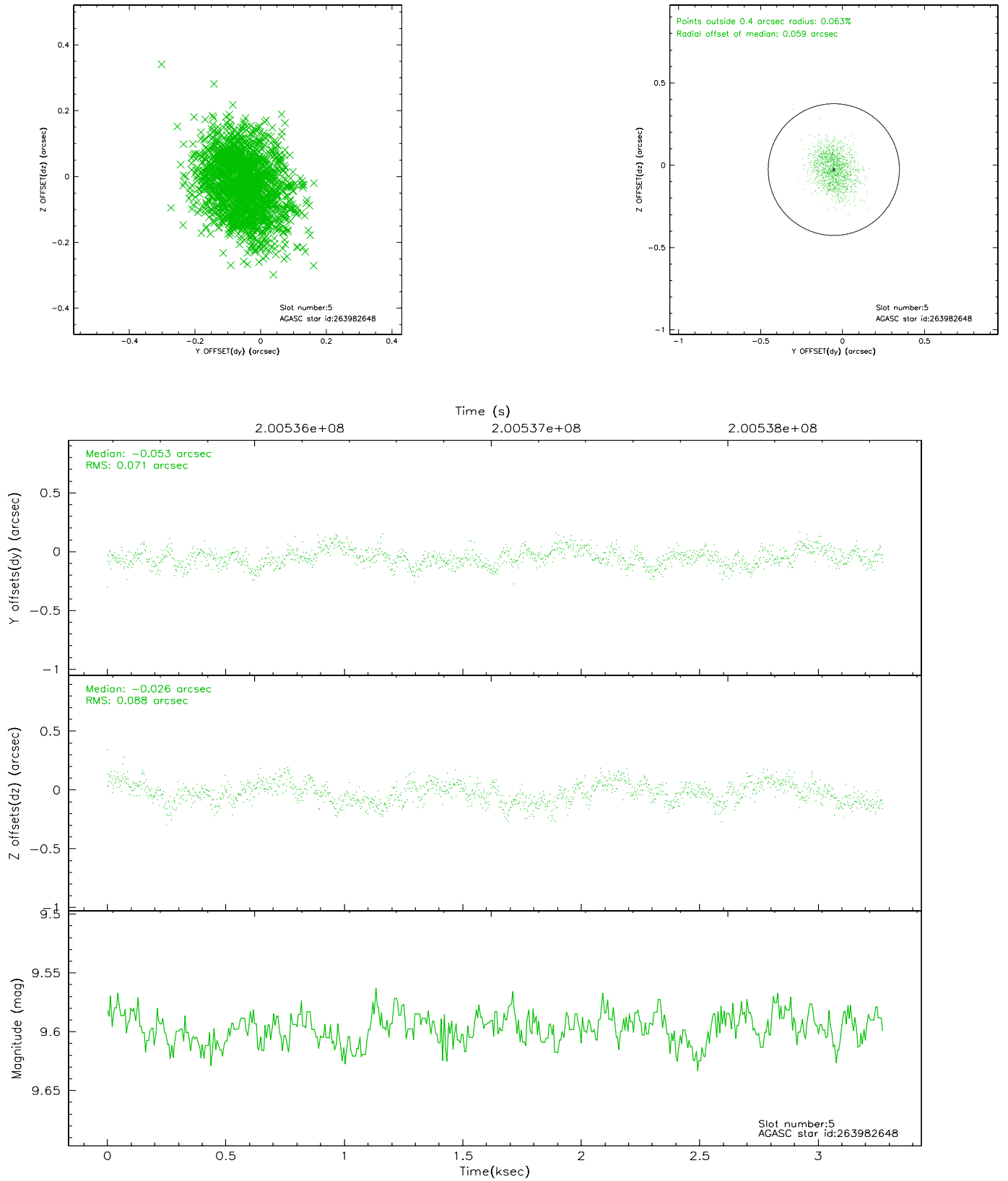
2.4.1 Slot 3



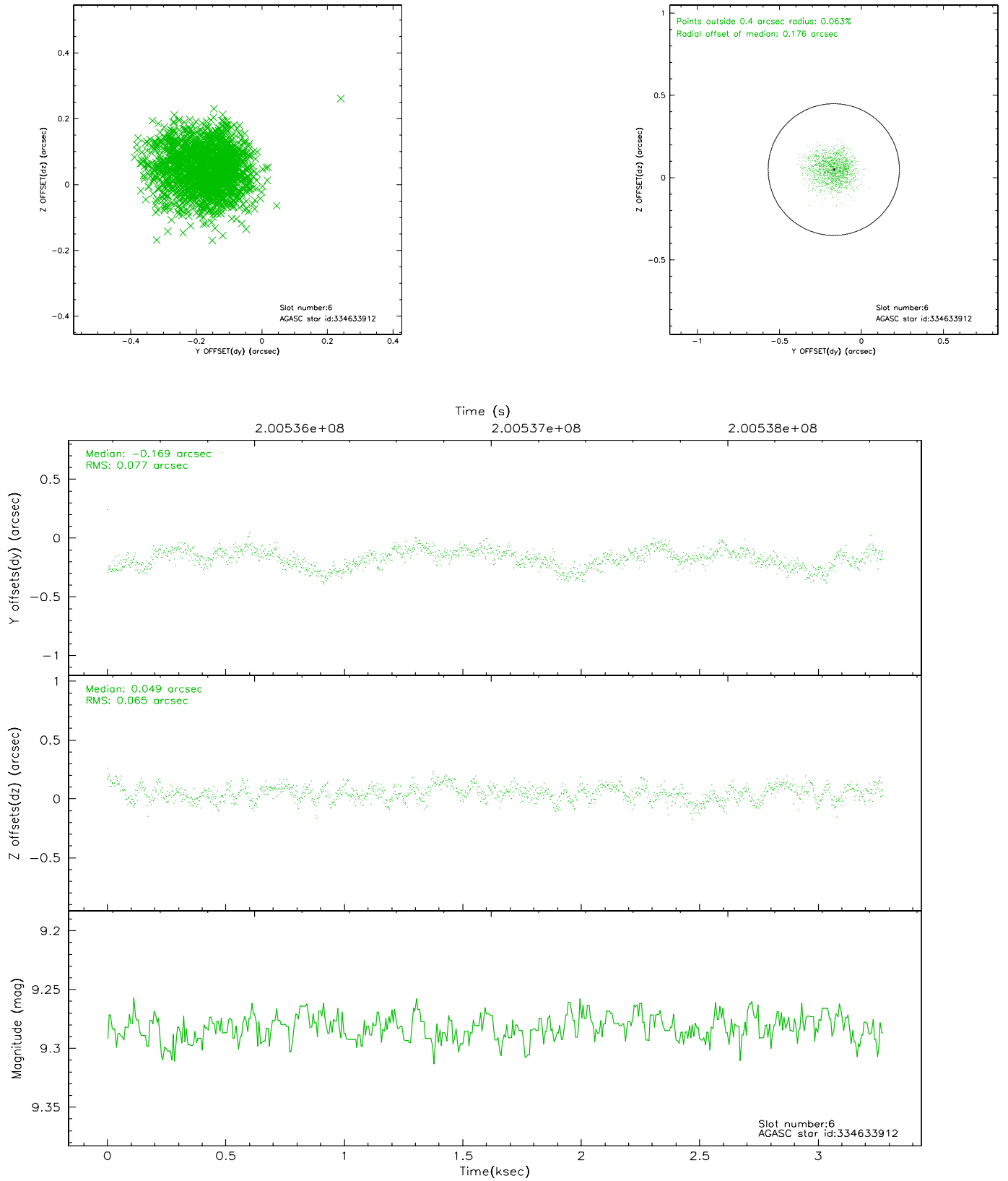
2.4.2 Slot 4



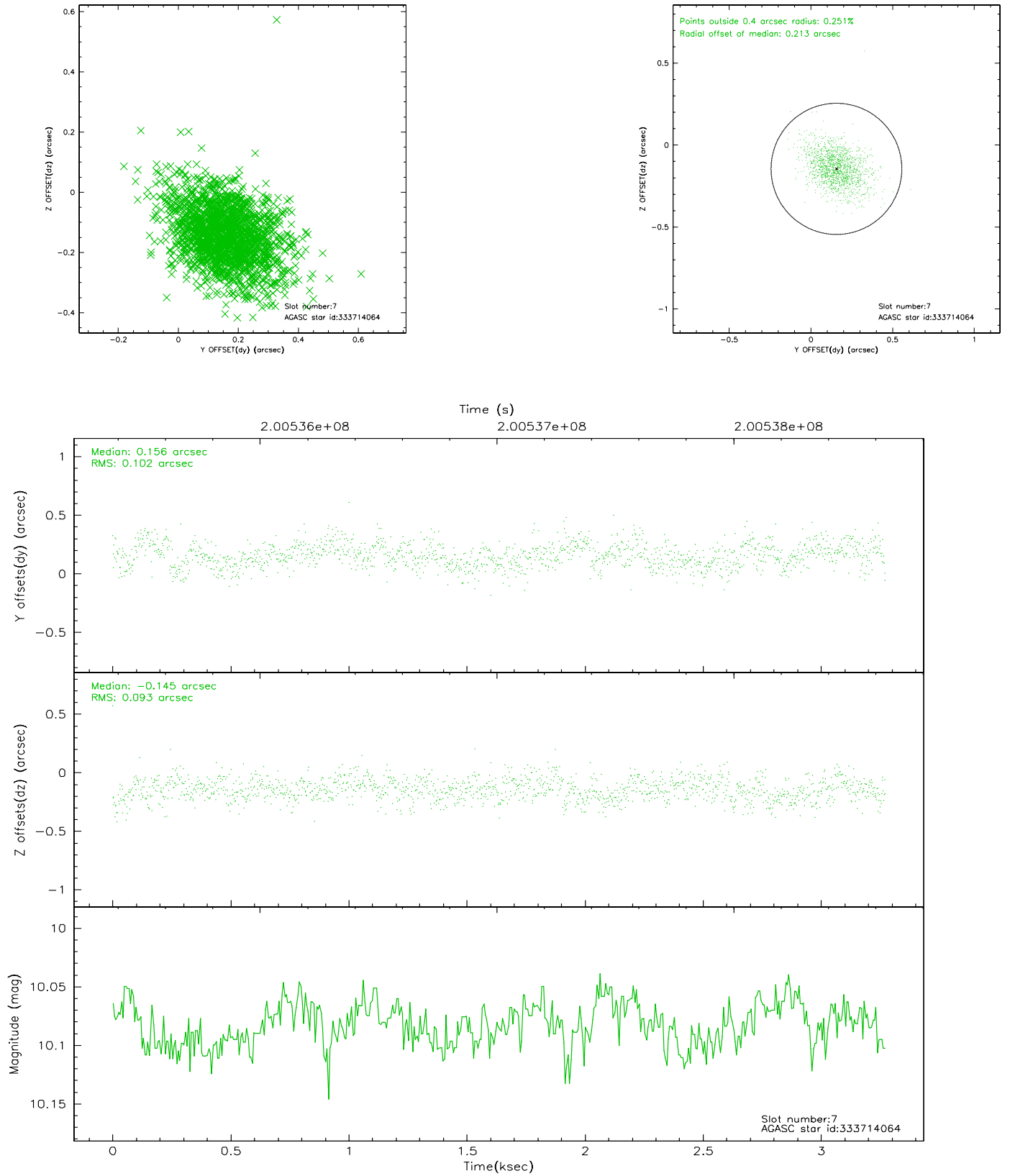
2.4.3 Slot 5



2.4.4 Slot 6

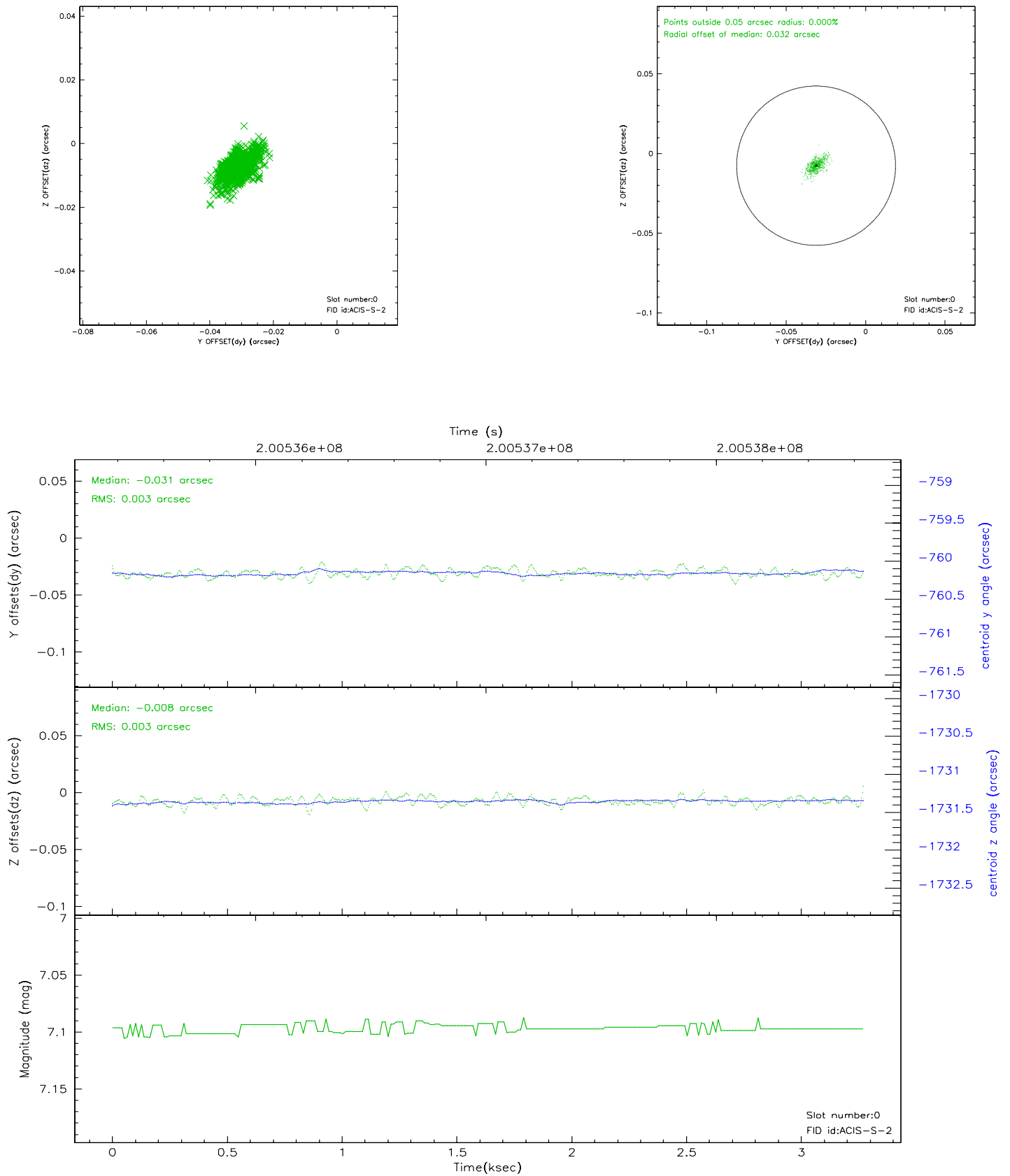


2.4.5 Slot 7

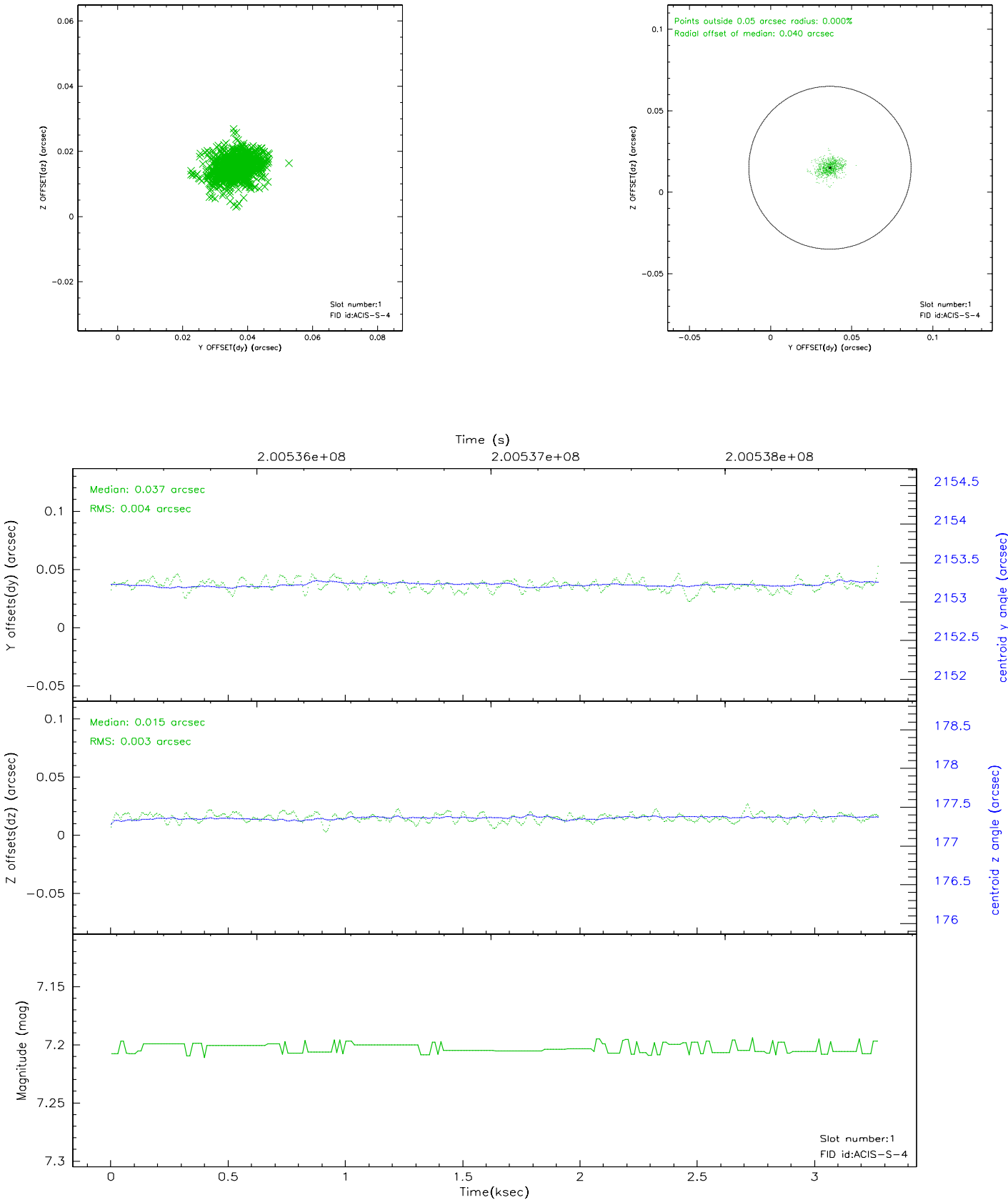


2.5 FID Slots

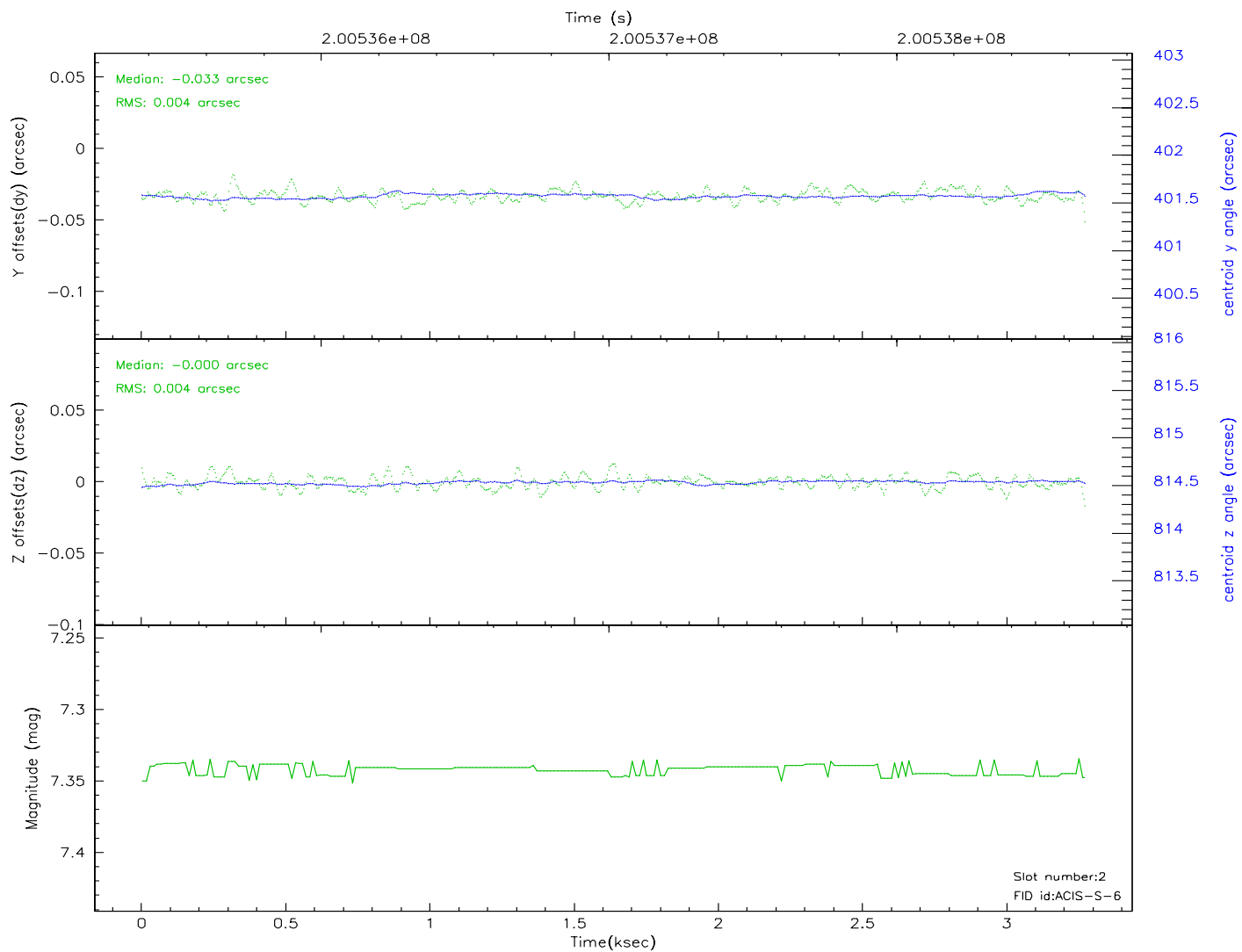
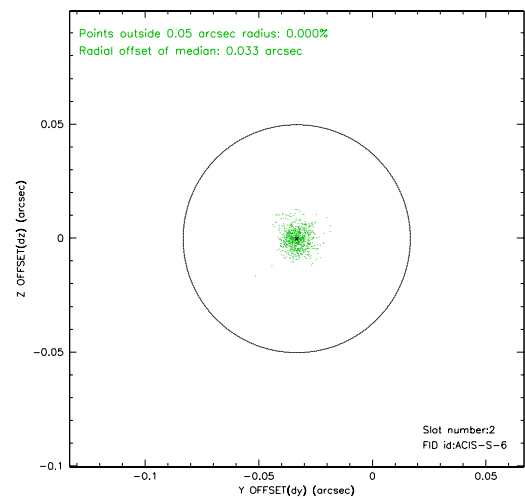
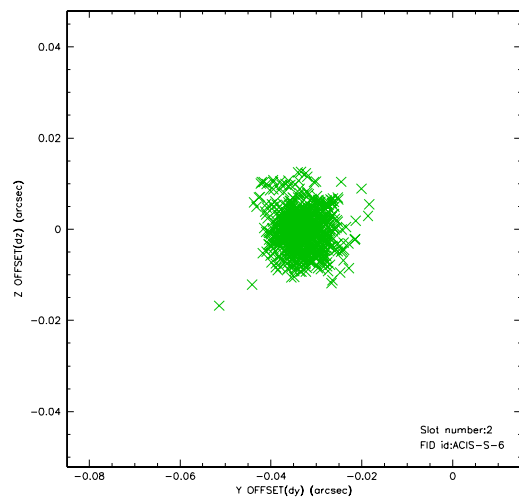
2.5.1 Slot 0



2.5.2 Slot 1



2.5.3 Slot 2



3 Point Sources

A Summary

A.1 Status

V&V Scientist	Jen Lauer
V&V Date (YYYY-MM-DD)	2006.05.19
V&V Edition	1
V&V Disposition and Status	OK
V&V Charge Time	2.828

A.2 Comments