

# V&V Reference Report

## L2 ASCDS Version : 7.6.7.1

Observation 4735 - L2 Version 001  
Chandra X-Ray Center

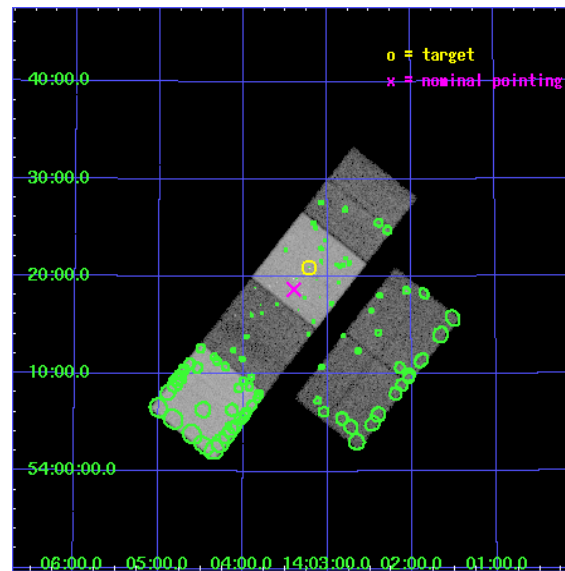
L2 Processing Date : Apr 17 2006

## Contents

<b>1</b>	<b>Front</b>	<b>2</b>
<b>2</b>	<b>OBI</b>	<b>3</b>
2.1	OBI . . . . .	3
2.1.1	Images . . . . .	3
2.1.2	Bias . . . . .	3
2.1.3	Parameters . . . . .	4
2.1.4	Events . . . . .	4
2.2	Compared Parameters . . . . .	5
2.3	Aspect . . . . .	6
2.4	Star Slots . . . . .	9
2.4.1	Slot 3 . . . . .	9
2.4.2	Slot 4 . . . . .	10
2.4.3	Slot 5 . . . . .	11
2.4.4	Slot 6 . . . . .	12
2.4.5	Slot 7 . . . . .	13
2.5	FID Slots . . . . .	14
2.5.1	Slot 0 . . . . .	14
2.5.2	Slot 1 . . . . .	15
2.5.3	Slot 2 . . . . .	16
<b>3</b>	<b>Point Sources</b>	<b>17</b>
<b>A</b>	<b>Summary</b>	<b>18</b>
A.1	Status . . . . .	18
A.2	Comments . . . . .	18

# 1 Front

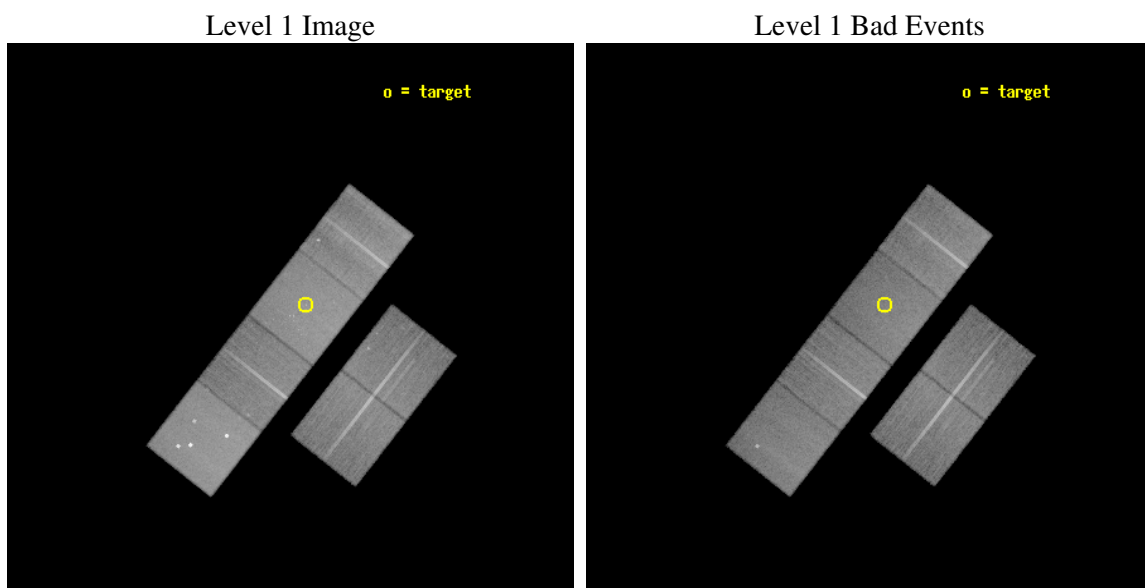
seq_num	600390
obs_id	4735
title	An Ultra-Deep Study of M101
observer	Dr. K. Kuntz
object	M101
dtcycle	0
cycle	P
ra_targ	210.80375
dec_targ	54.348778
ra_nom	210.84968217905
dec_nom	54.311746306332
roll_nom	308.11930875685
revision	2
ontime	29148.799891412
livetime	28779.700235887
ontime2	29139.076970667
ontime3	29148.799891412
ontime5	29148.799891412
ontime6	29148.799891412
ontime7	29148.799891412
ontime8	29145.558901221
l2events	357790



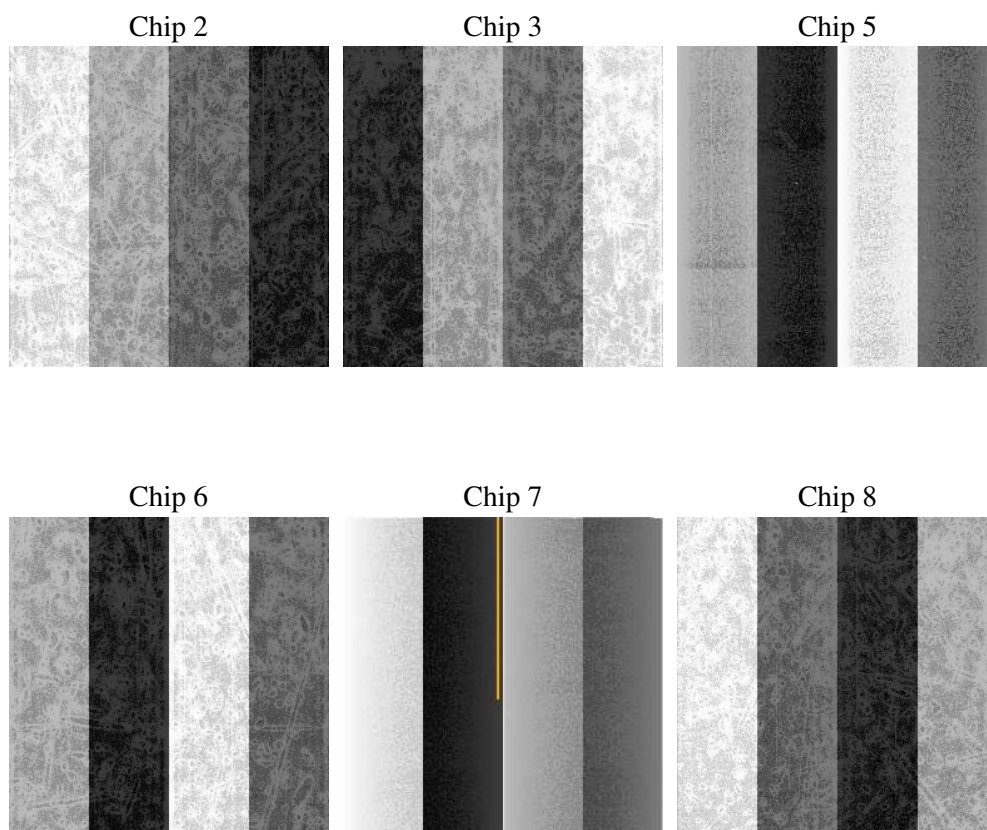
## 2 OBI

### 2.1 OBI

#### 2.1.1 Images



#### 2.1.2 Bias



### 2.1.3 Parameters

obi_num	0
ascdsver	7.6.7.1
caldsver	3.2.1
date	2006-04-17T14:06:57
revision	2

sched_exp_time	29000.000000
ontime	29344.007519901
ontime2	29334.284569234
ontime3	29344.007489979
ontime5	29344.007519901
ontime6	29344.007489979
ontime7	29344.007519901
ontime8	29340.766499788
l1events	1638040

### 2.1.4 Events

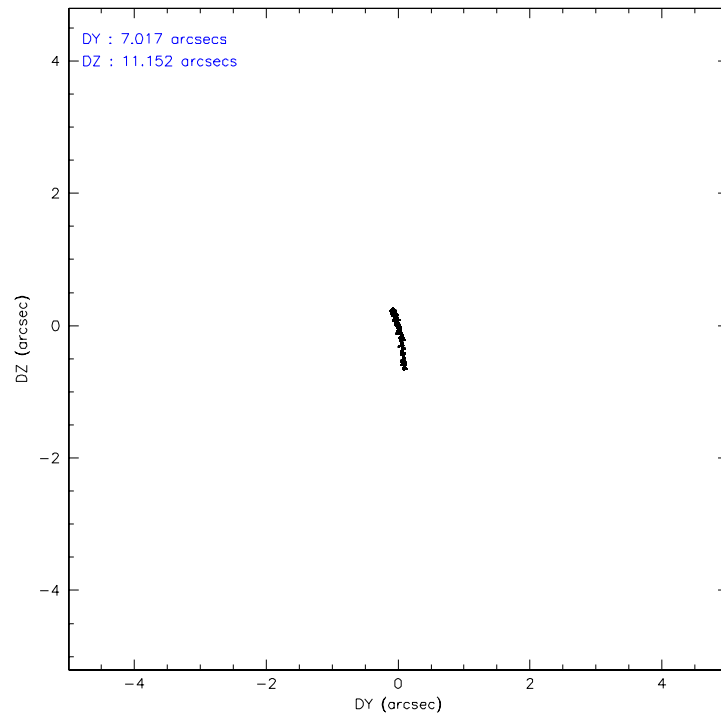
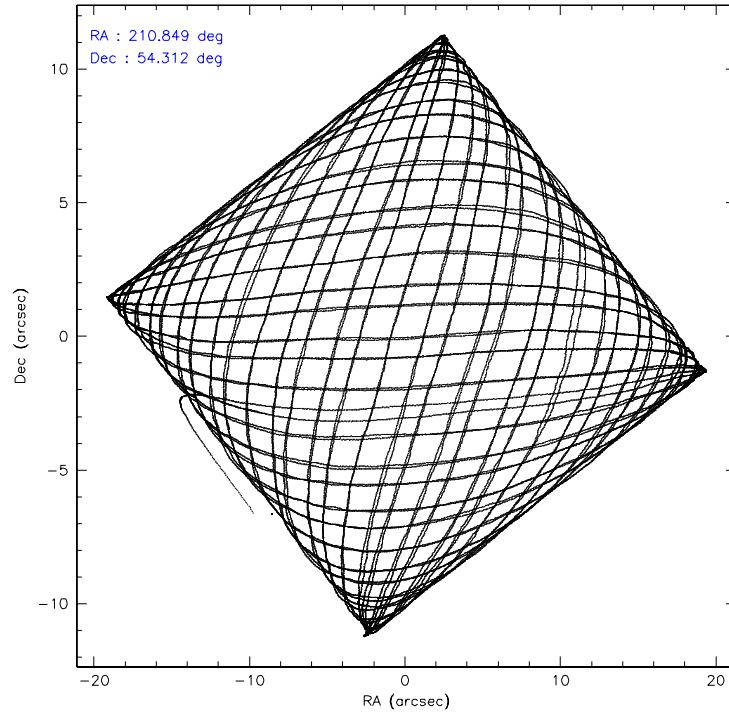
	ccd 2	ccd 3	ccd 5	ccd 6	ccd 7	ccd 8
level 1 events	233231	218636	351604	234760	311684	288125
rejected events	206140	191943	191224	207282	189496	225214
rejected %	88%	87%	54%	88%	60%	78%

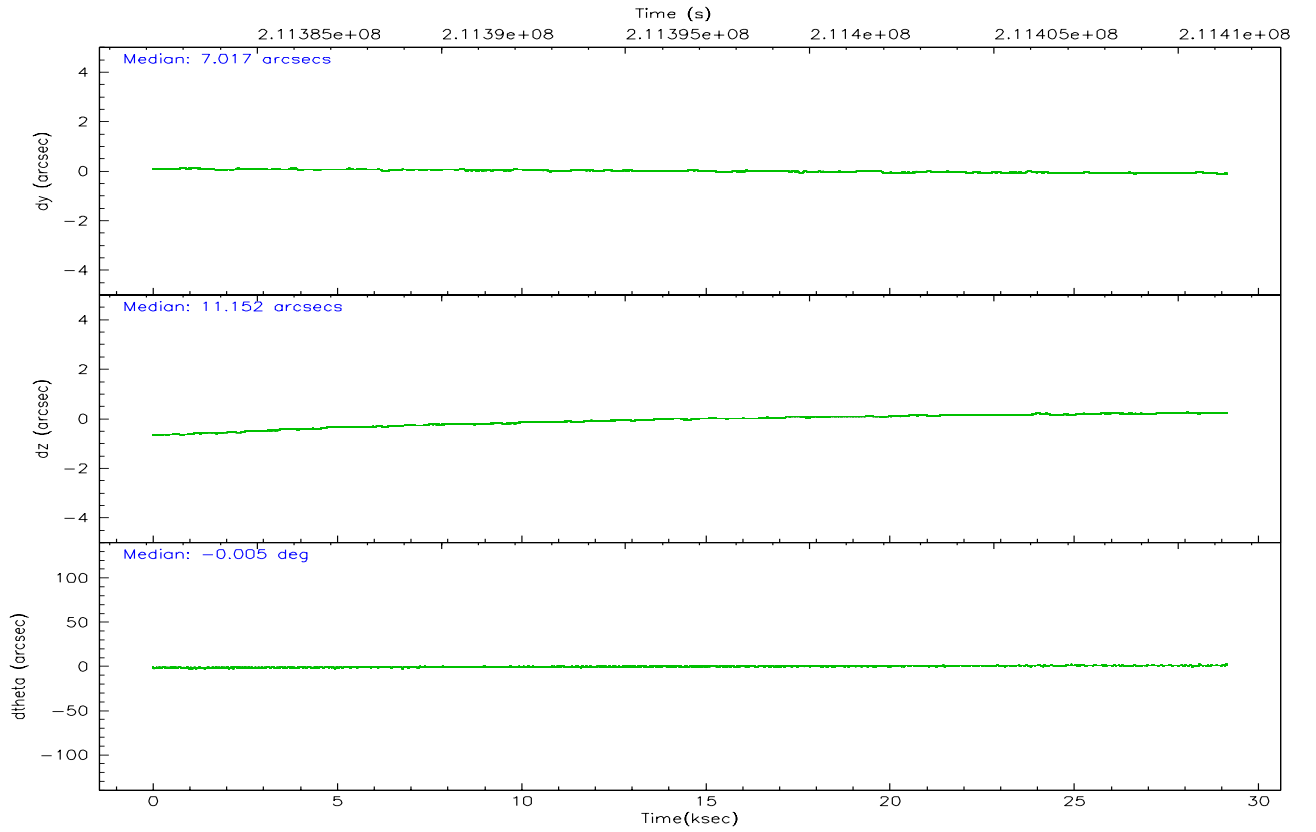
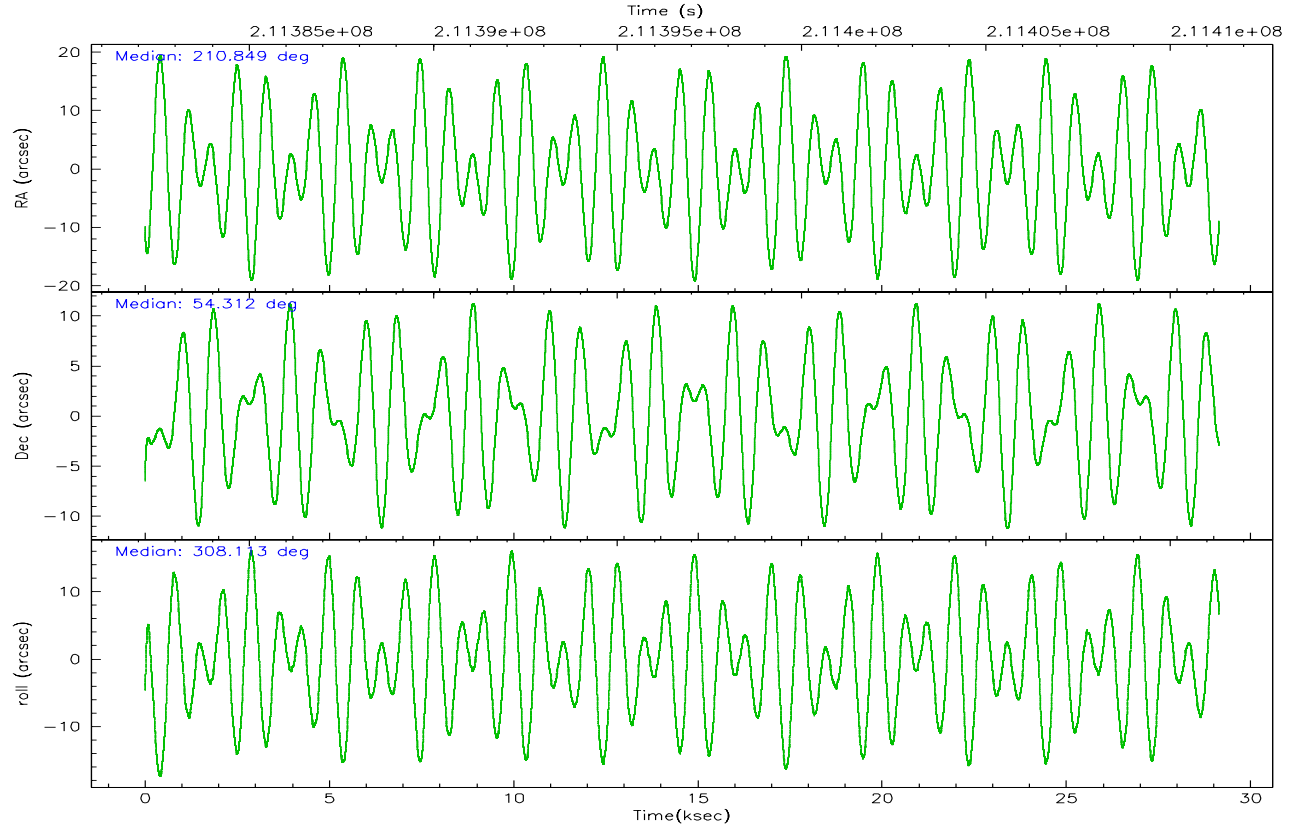
	ccd 2	ccd 3	ccd 5	ccd 6	ccd 7	ccd 8
grade 0 events	12059	12034	22635	11300	8791	20548
	5%	5%	6%	4%	2%	7%
grade 1 events	133	154	285	125	186	201
	0%	0%	0%	0%	0%	0%
grade 2 events	5688	5099	47297	5582	30636	13674
	2%	2%	13%	2%	9%	4%
grade 3 events	2640	2567	3438	2596	6369	6624
	1%	1%	0%	1%	2%	2%
grade 4 events	2444	2552	3145	2608	6351	6211
	1%	1%	0%	1%	2%	2%
grade 5 events	9013	10113	16706	10641	20921	13837
	3%	4%	4%	4%	6%	4%
grade 6 events	4430	4609	84961	5571	70840	16256
	1%	2%	24%	2%	22%	5%
grade 7 events	196824	181508	173137	196337	167590	210774
	84%	83%	49%	83%	53%	73%

## 2.2 Compared Parameters

Parameter	Planned	Actual	Parameter	Planned	Actual
Instrument	ACIS	ACIS	Obspar format version number	6	6
Detector	ACIS-235678	ACIS-235678	Obspar file type	PREDICTED	ACTUAL
Grating	NONE	NONE	Obspar update status	NONE	UPDATED
Data mode	VFAINT	VFAINT	On-chip summing requested	N	N
Observation mode	POINTING	POINTING	Subarray requested	NONE	NONE
Pointing RA	210.806153	210.849682179052	Alternating exposures requested	N	N
Pointing Dec	54.321537	54.31174630633237	Primary exposure time	0.000000	3.2
Pointing Roll	307.998039	308.1193087568496			
SIM focus pos (mm)	-0.684267	-0.6828225247311905			
SIM defocus (mm)	0	0.001444936568705701			
SIM translation stage pos (mm)	-190.132523	-190.1400660498719			
SIM translation stage offset (mm)	0	0.00754346686406393			
Observation start time	211382322.184000	211381171.24652			
Observation start date	2004-09-12T13:17:38	2004-09-12T12:59:31			
Observation end time	211411322.184000	211411919.71039			
Observation end date	2004-09-12T21:20:58	2004-09-12T21:31:59			
Read mode	TIMED	TIMED			

## 2.3 Aspect





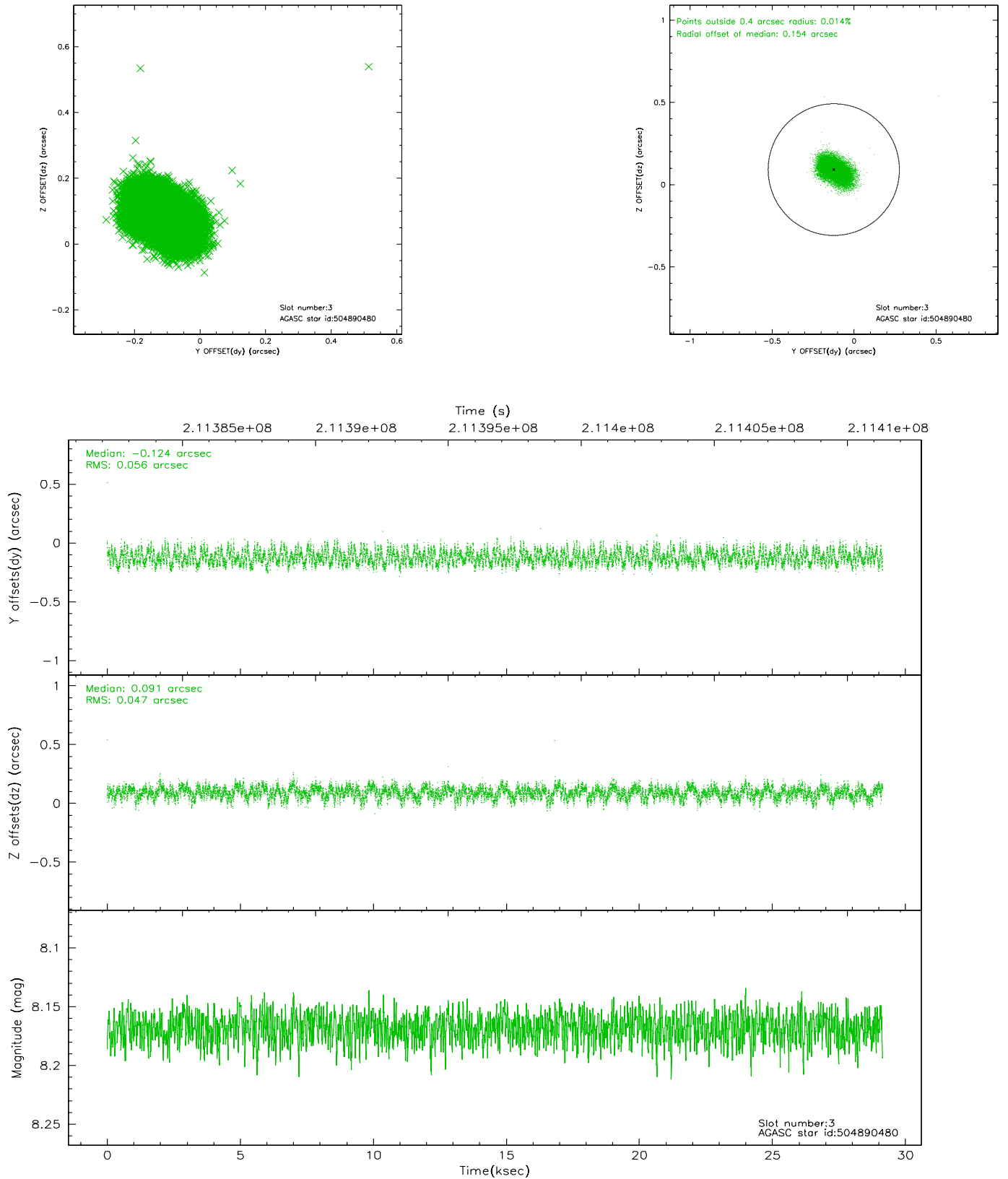
### Slot Statistics

slot	status	id	mag	n_pts	med_dy	med_dz	dr1	dr2	ra	dec	mean_y	mean_z
0	FID	ACIS-S-2	7.10	7110	-0.032	0.014	0.007	0.012	0.000000	0.000000	-759.78	-1732.35
1	FID	ACIS-S-4	7.20	7110	0.024	0.012	0.007	0.012	0.000000	0.000000	2153.49	176.09
2	FID	ACIS-S-5	7.23	7109	-0.024	-0.017	0.007	0.011	0.000000	0.000000	-1812.54	169.77
3	GUIDE	504890480	8.17	14216	-0.124	0.091	0.078	0.124	210.132463	53.768436	681.77	-2351.30
4	GUIDE	504891480	8.07	14220	-0.027	-0.085	0.054	0.089	210.708012	54.666096	-1103.16	602.75
5	GUIDE	504894408	9.28	14207	-0.007	0.075	0.088	0.141	211.942794	54.047749	2240.42	1299.02
6	GUIDE	504894856	8.98	14214	0.019	-0.010	0.087	0.143	209.819510	54.132689	-756.20	-2049.11
7	GUIDE	505292416	9.30	14210	0.139	-0.072	0.097	0.159	210.920759	55.040479	-1894.52	1779.78

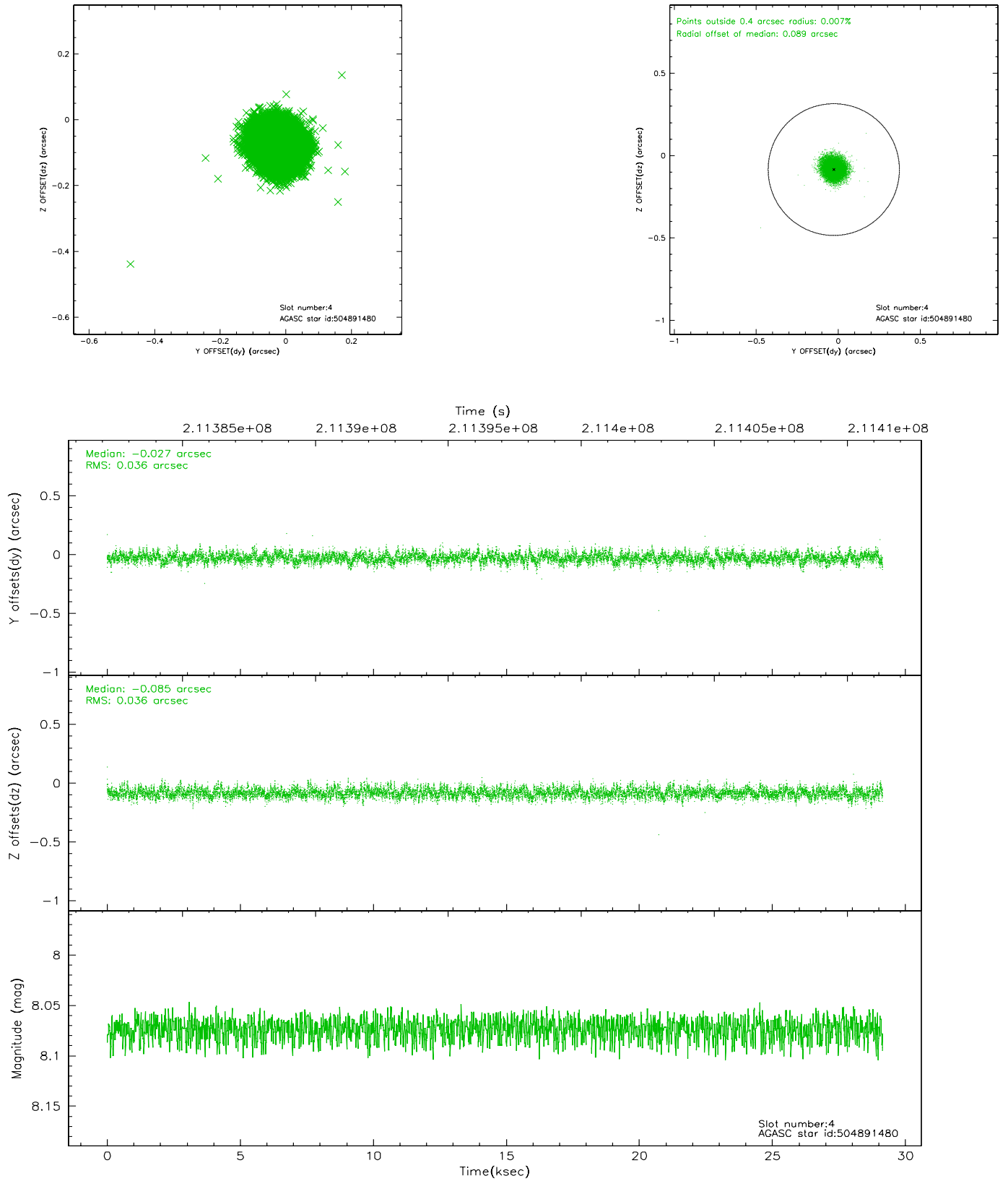


## 2.4 Star Slots

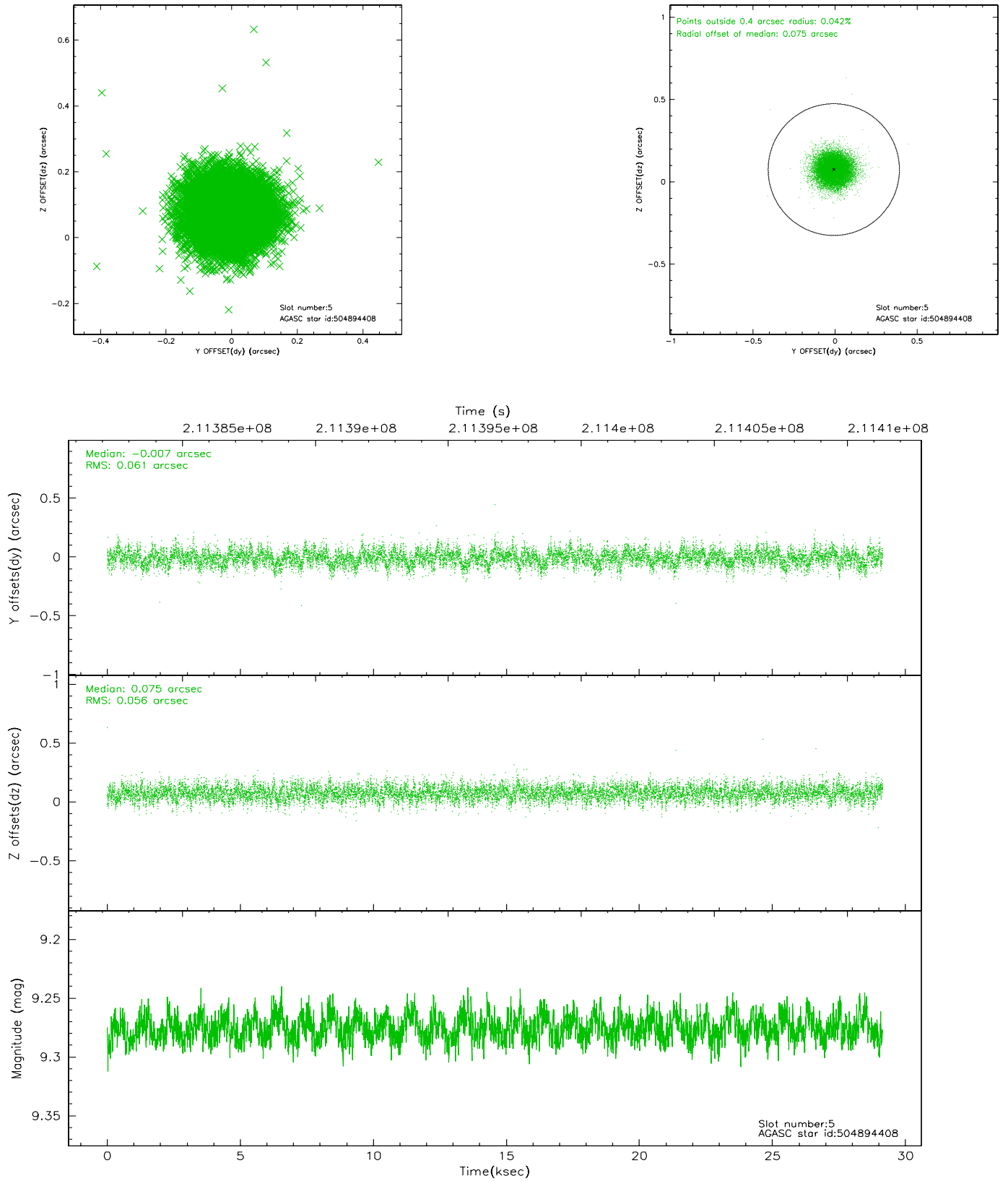
### 2.4.1 Slot 3



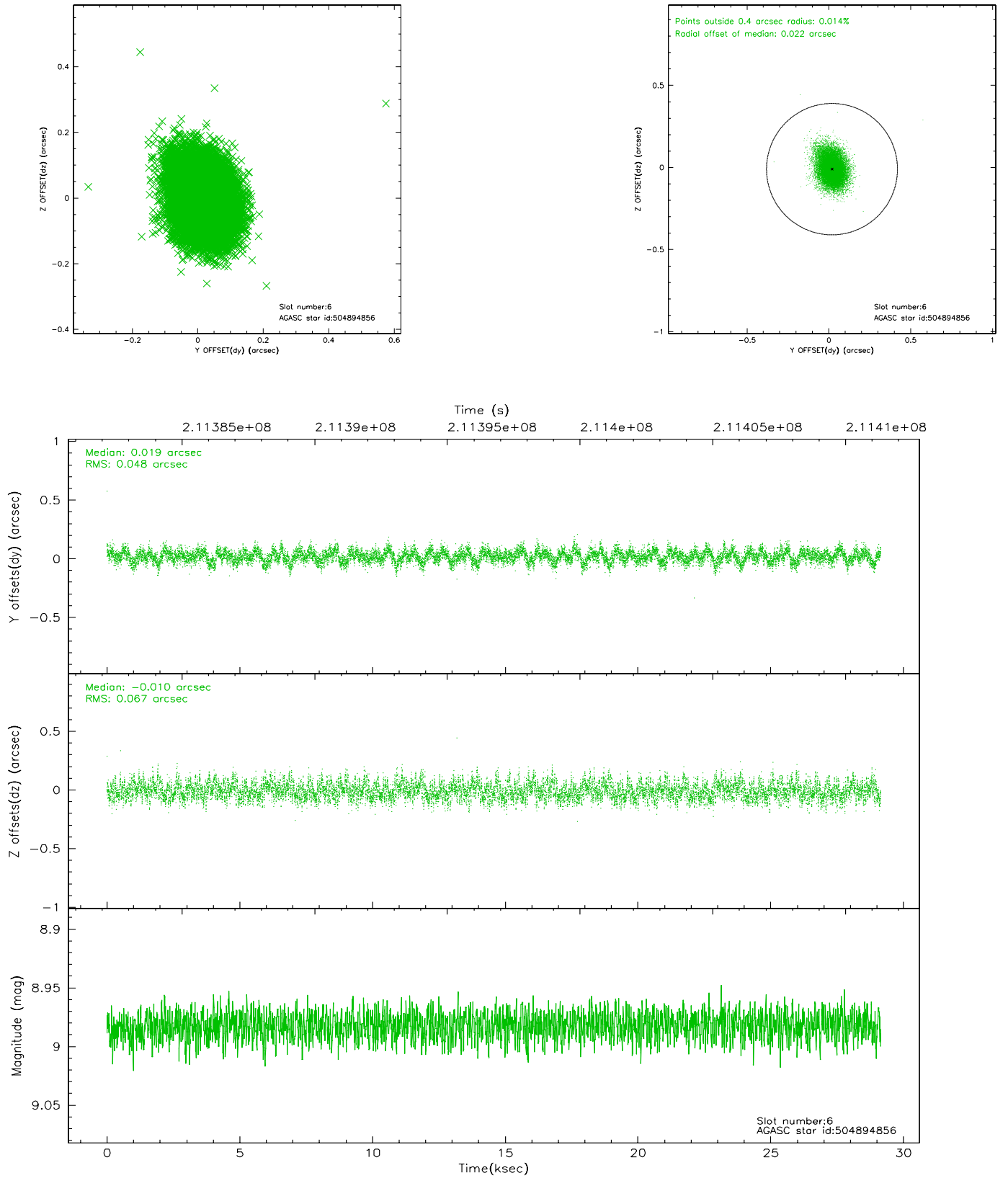
## 2.4.2 Slot 4



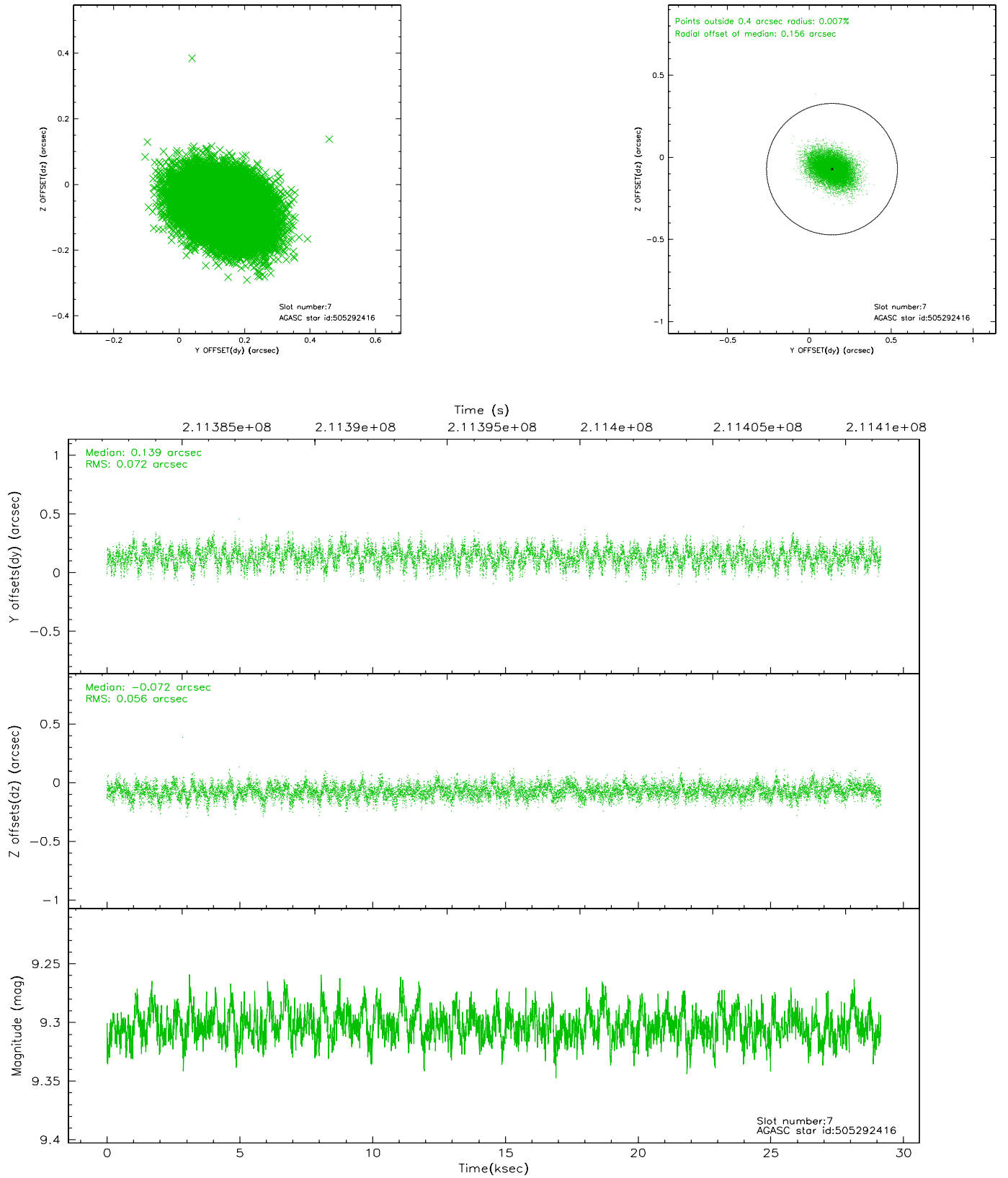
### 2.4.3 Slot 5



## 2.4.4 Slot 6

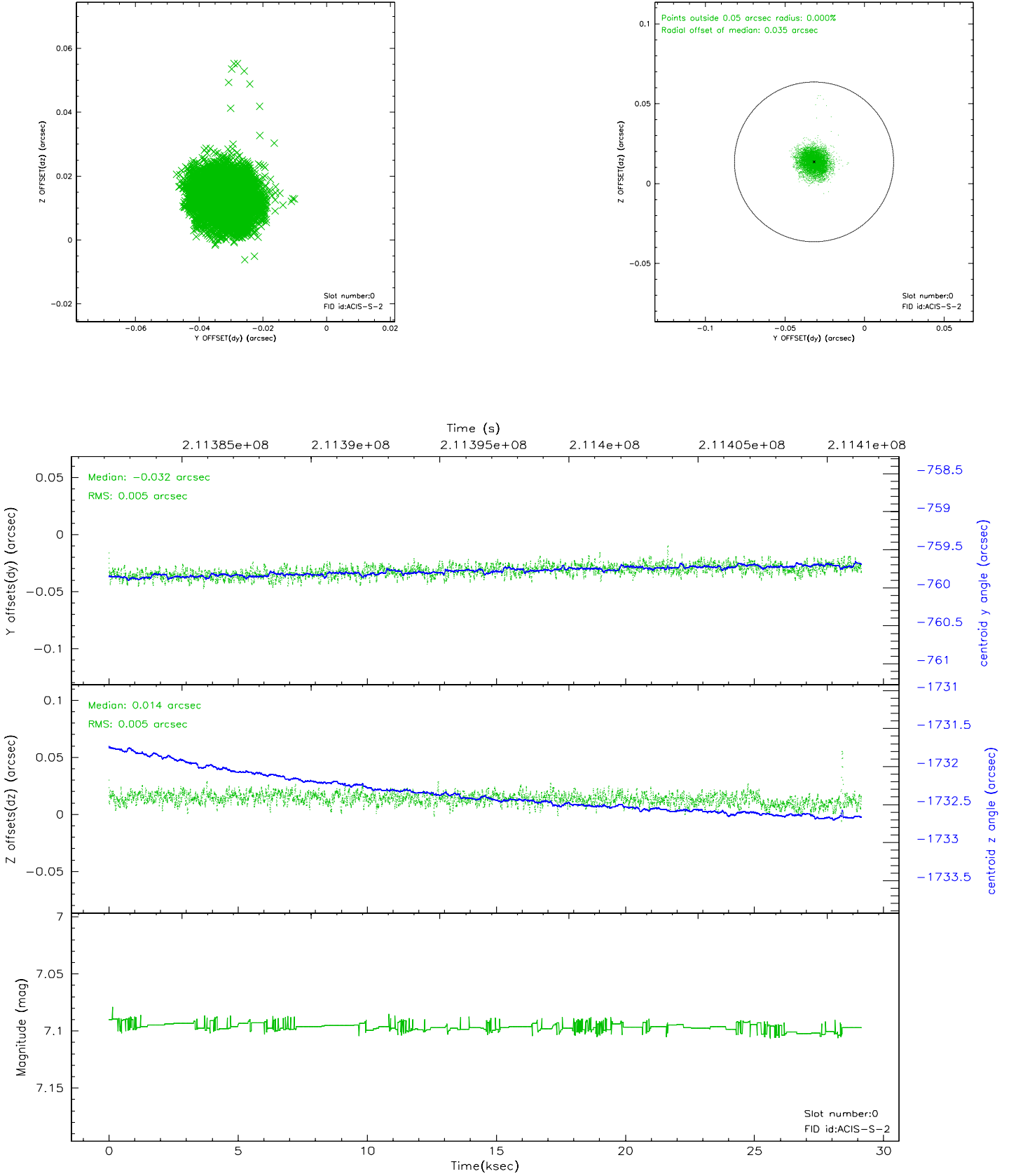


## 2.4.5 Slot 7

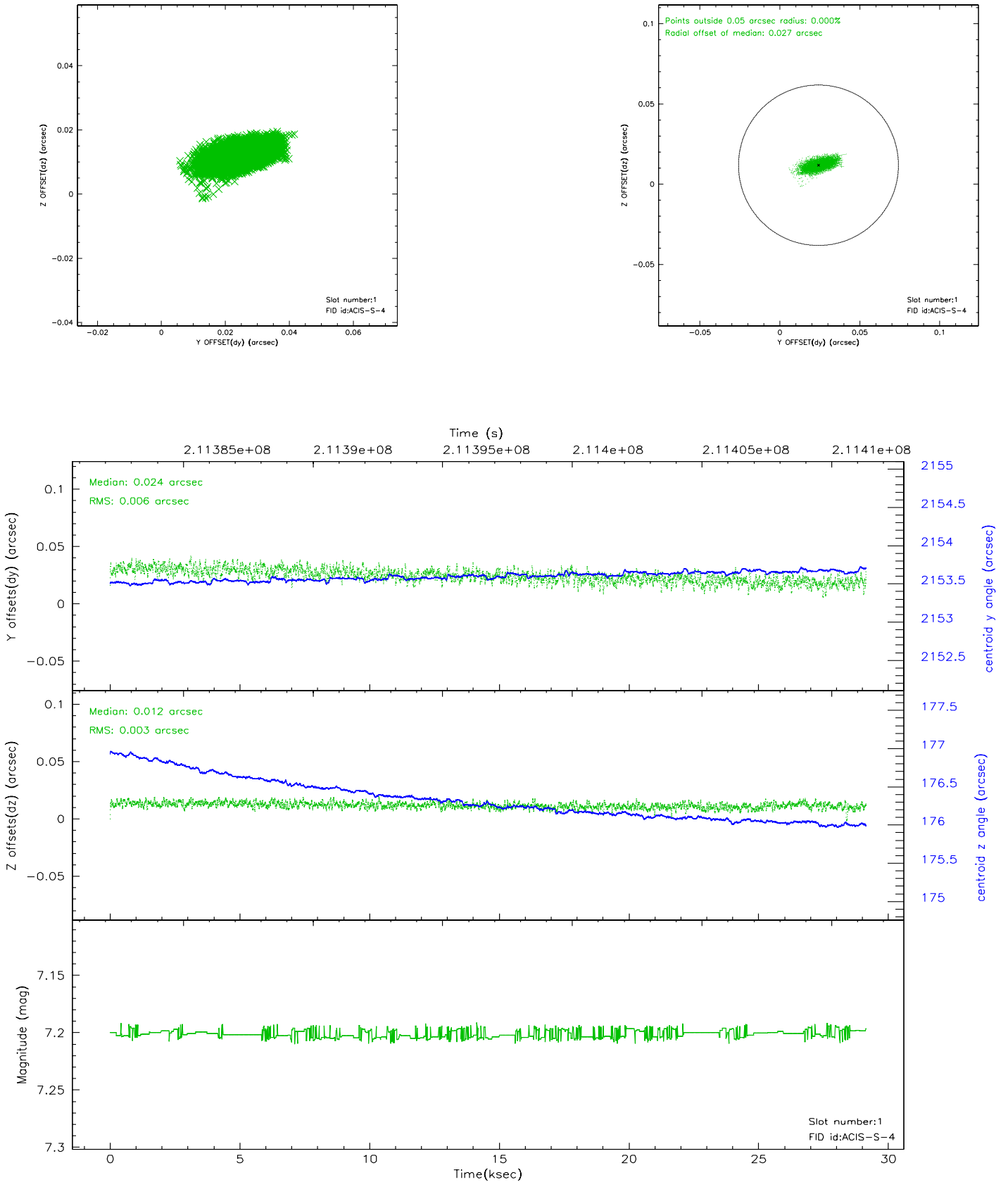


## 2.5 FID Slots

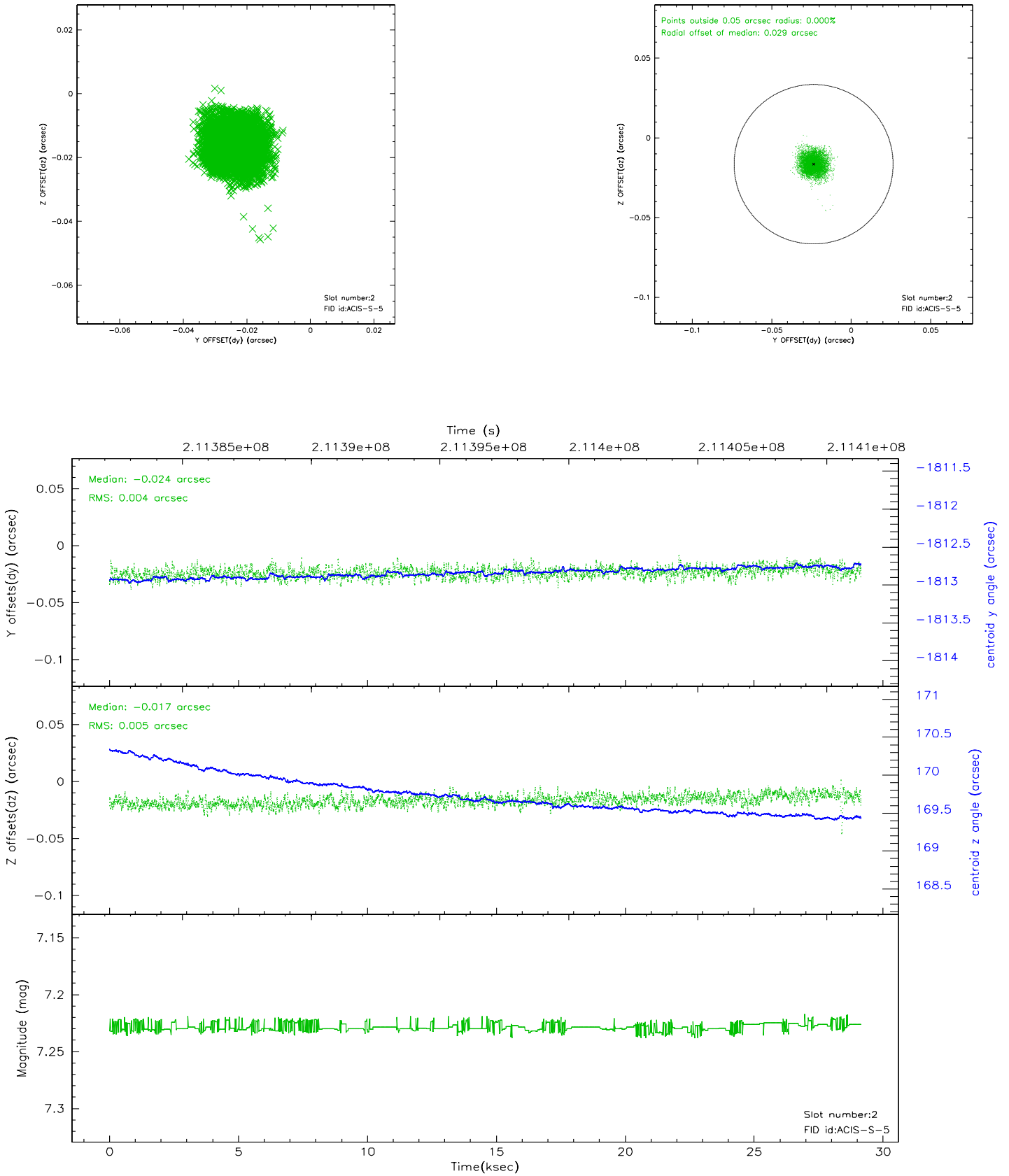
### 2.5.1 Slot 0



## 2.5.2 Slot 1

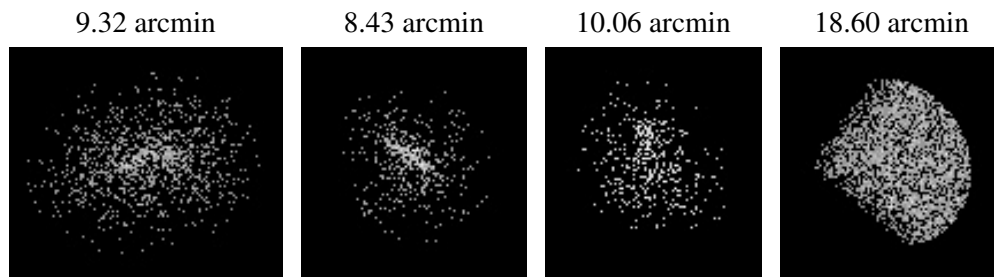


### 2.5.3 Slot 2





### 3 Point Sources



## A Summary

### A.1 Status

V&V Scientist	Beth Sundheim
V&V Date (YYYY-MM-DD)	2006.04.17
V&V Edition	1
V&V Disposition and Status	OK
V&V Charge Time	29.148

### A.2 Comments