

V&V Reference Report

L2 ASCDS Version : 8.4.5

Observation 4685 - L2 Version 5
Chandra X-Ray Center

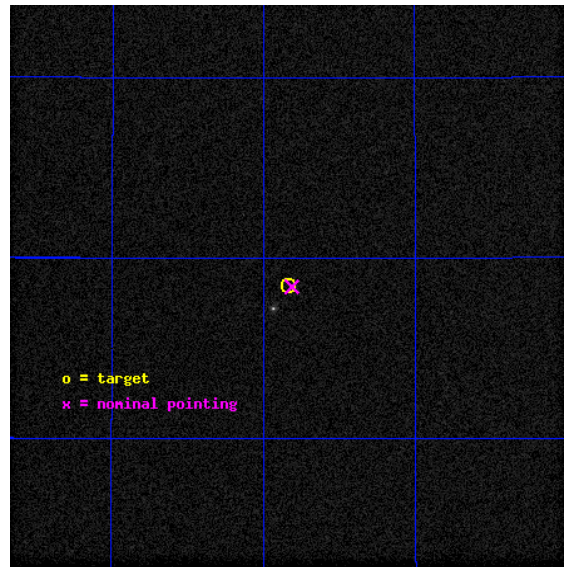
L2 Processing Date : Dec 1 2012

Contents

1	Front	2
2	OBI	3
2.1	OBI	3
2.1.1	Images	3
2.1.2	Parameters	4
2.1.3	Events	4
2.2	Compared Parameters	5
2.3	Aspect	6
2.4	Star Slots	9
2.4.1	Slot 3	9
2.4.2	Slot 4	10
2.4.3	Slot 5	11
2.4.4	Slot 6	12
2.4.5	Slot 7	13
2.5	FID Slots	14
2.5.1	Slot 0	14
2.5.2	Slot 1	15
2.5.3	Slot 2	16
A	Summary	17
A.1	Status	17
A.2	Comments	17

1 Front

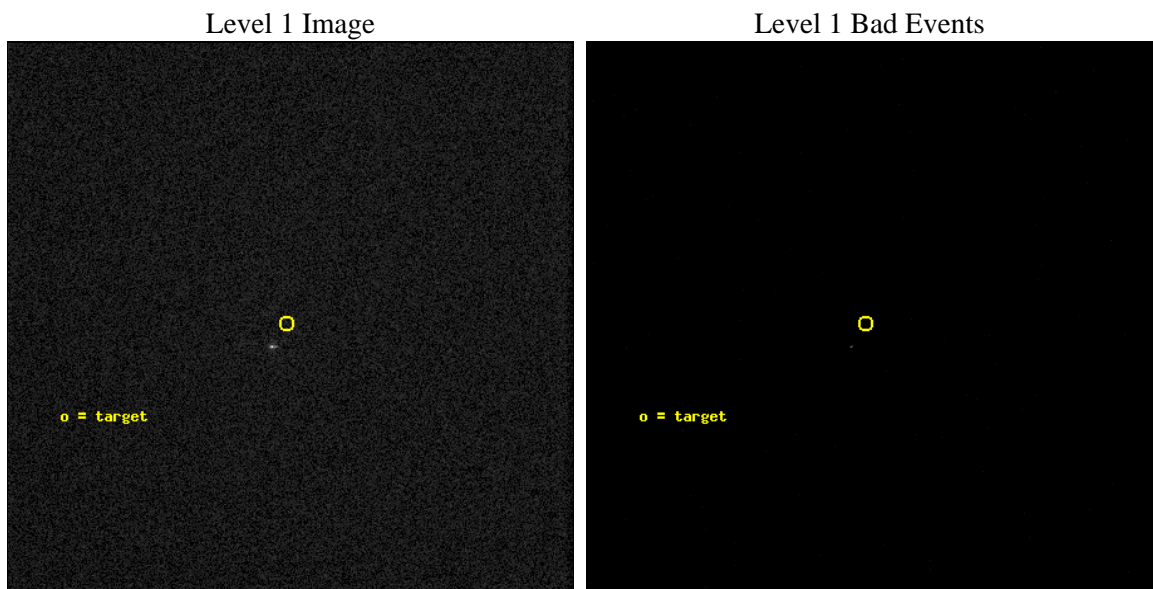
seq_num	600340	Sequence number
obs_id	4685	Observation id
title	Locating Ultraluminous X-Ray Sources	Proposal title
observer	Prof. Philip Kaaret	Principal investigator
object	NGC 3998 ULX	Source name
ra_targ	179.46	Observer's specified target RA [deg]
dec_targ	55.475278	Observer's specified target Dec [deg]
ra_nom	179.4532778979	Nominal RA [deg]
dec_nom	55.473739157104	Nominal Dec [deg]
roll_nom	225.03945432626	Nominal Roll [deg]
revision	5	Processing version of data
ontime	5893.7502600551	[s]
livetime	5856.3305342163	Ontime multiplied by DTCOR
l2events	200652	Number of level 2 events



2 OBI

2.1 OBI

2.1.1 Images



2.1.2 Parameters

obi_num	0	Obi number	sched_exp_time	6000.000000	[s] Scheduled observation exposure time
ascdsver	8.4.5	Processing system revision	ontime	5893.7502600551	[s]
caldbver	4.5.2	 	l1events	329251	Number of level 1 events
date	2012-12-01T05:48:24	Date and time of file creation			
revision	5	Processing version of data			

2.1.3 Events

Level 1 Events

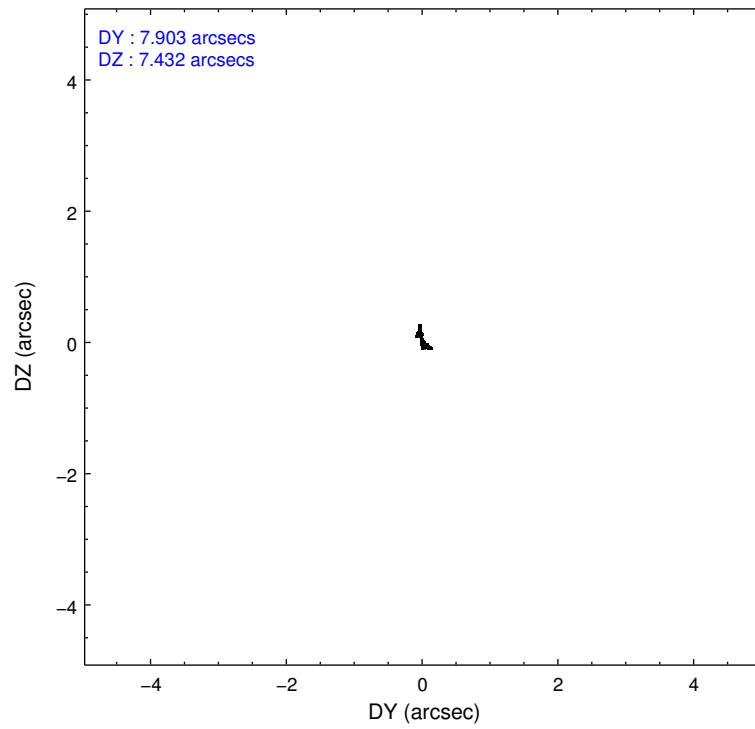
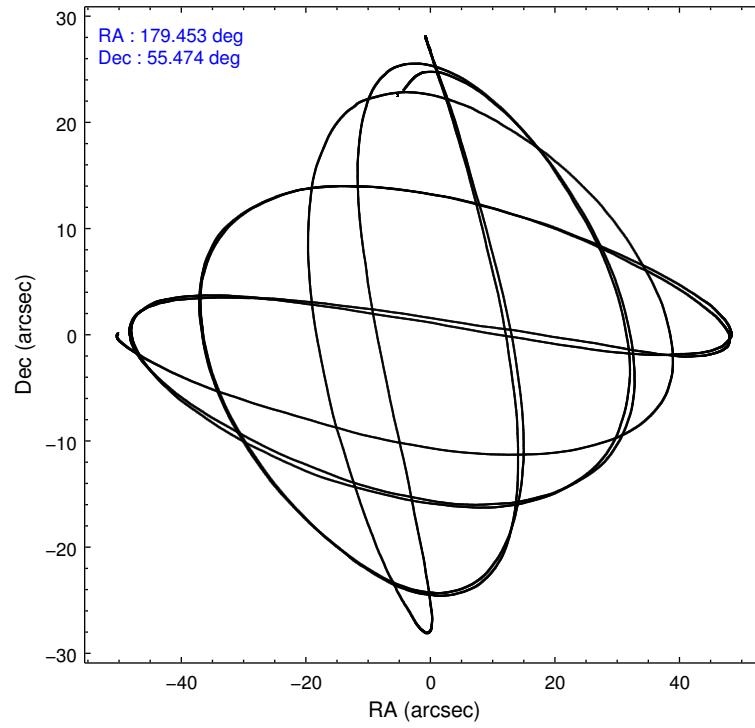
	segment 0
level 1 events	329251
rejected events	33761
rejected %	10%

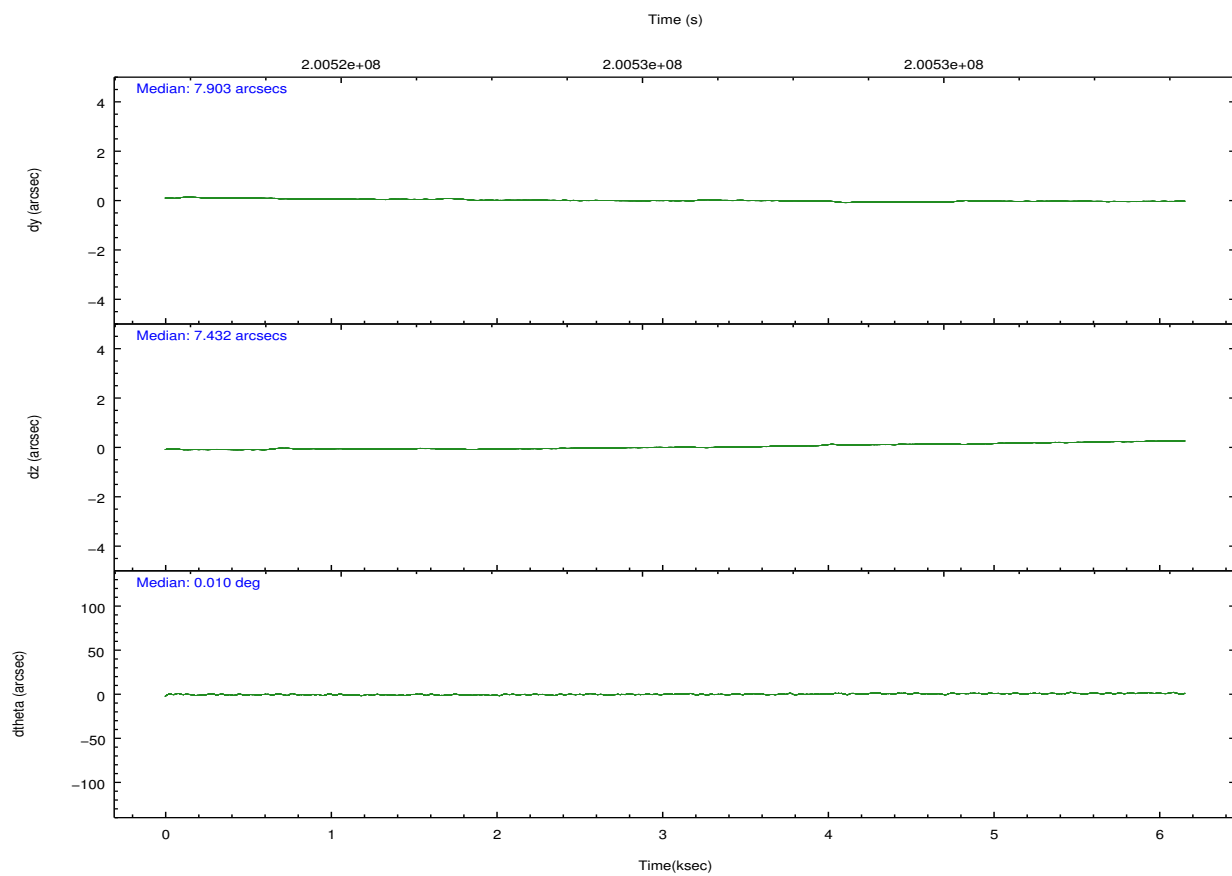
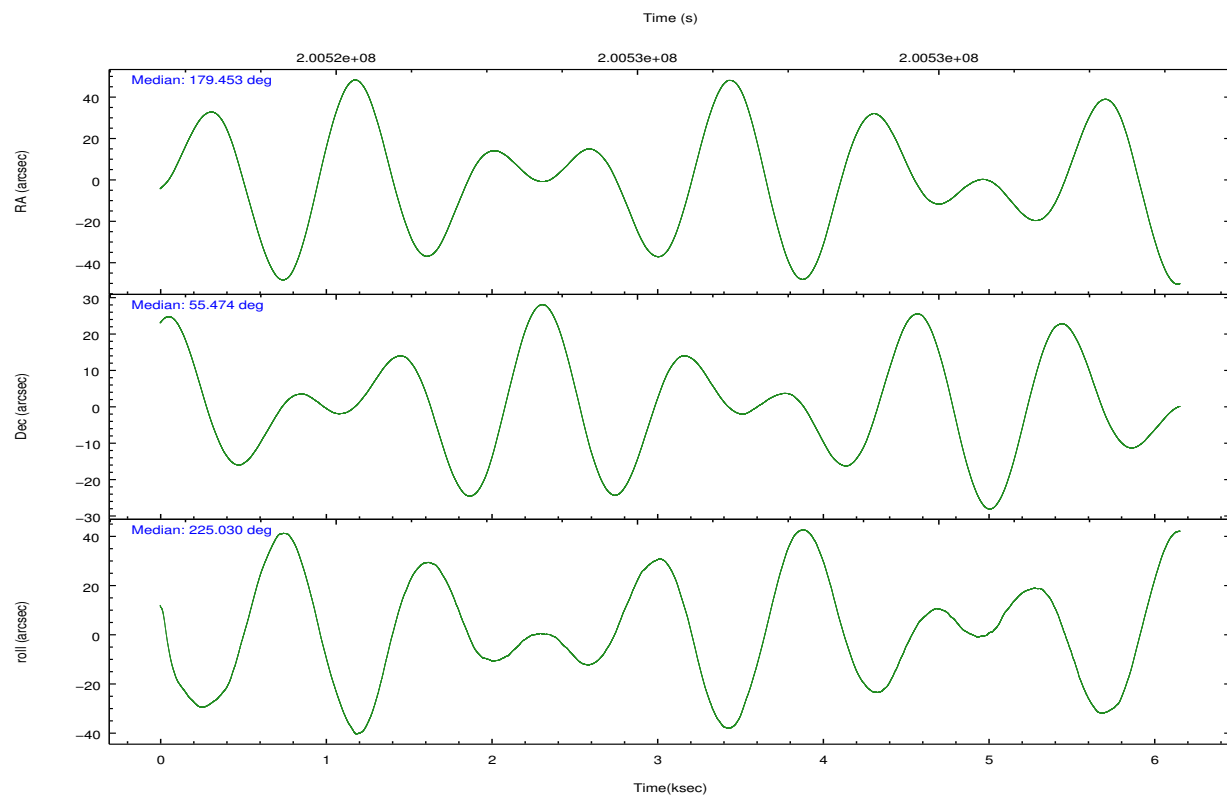
2.2 Compared Parameters

Parameter	Planned	Actual
Instrument	HRC	HRC
Detector	HRC-I	HRC-I
Grating	NONE	NONE
Data mode	OBSERVING	OBSERVING
Observation mode	POINTING	POINTING
[deg] Pointing RA	179.464485	179.4532778979046
[deg] Pointing Dec	55.500031	55.47373915710403
[deg] Pointing Roll	225.125707	225.0394543262609
[mm] SIM focus pos	-1.040293	-1.038866356238299
[mm] SIM defocus	0	0.001426264420575141
[mm] SIM translation stage pos	126.985494	126.9829799899862
[mm] SIM translation stage offset	0	0.002508901615314585
[s] Observation start time (MET)	200523288.184000	200522502.70226
Observation start date	2004-05-09T20:53:44	2004-05-09T20:41:42
[s] Observation end time (MET)	200529288.184000	200529881.16509
Observation end date	2004-05-09T22:33:44	2004-05-09T22:44:41

Parameter	Planned	Actual
Obspar format version number	7	7
Obspar file type	PREDICTED	ACTUAL
Obspar update status	NONE	UPDATED

2.3 Aspect



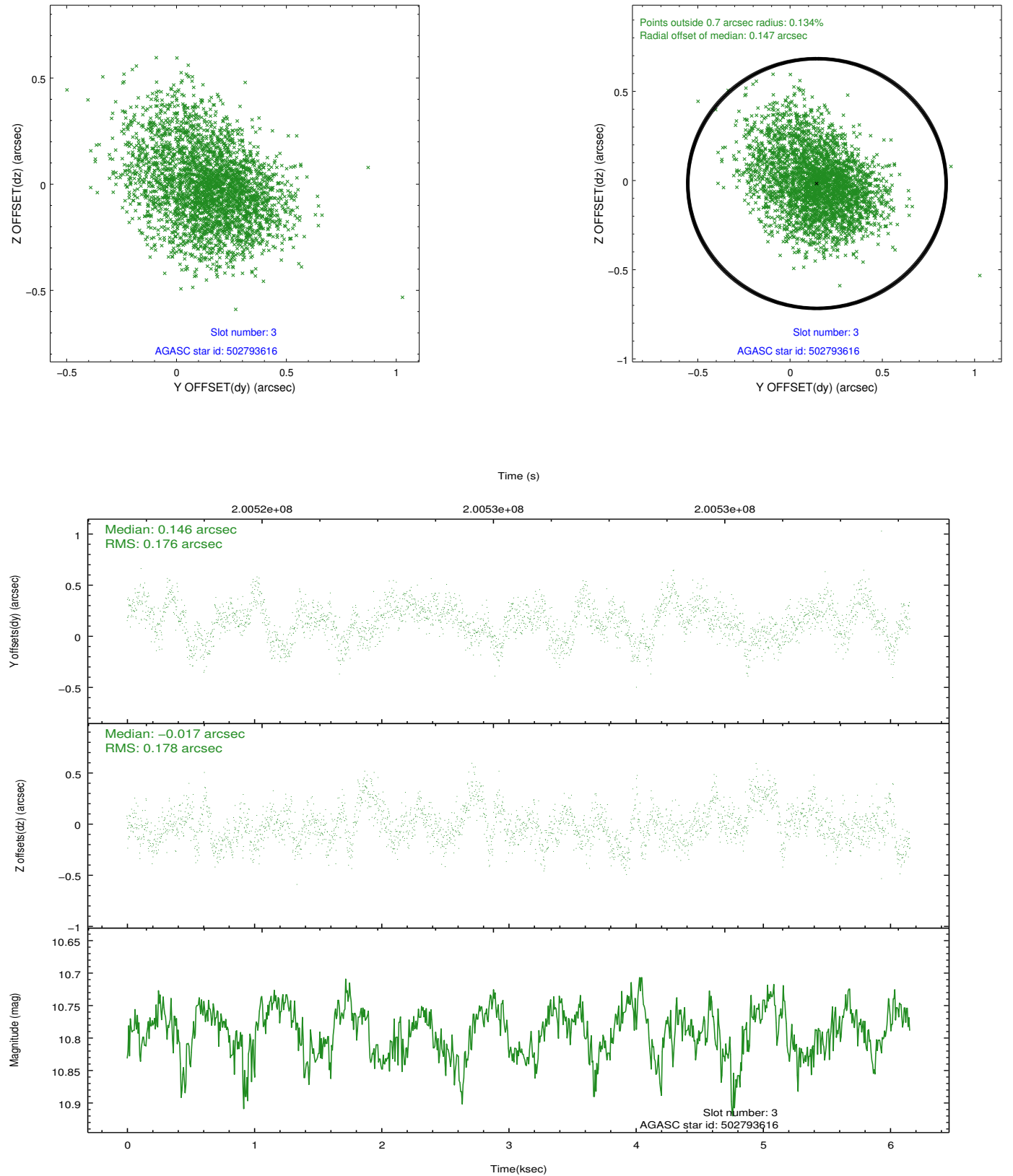


Slot Statistics

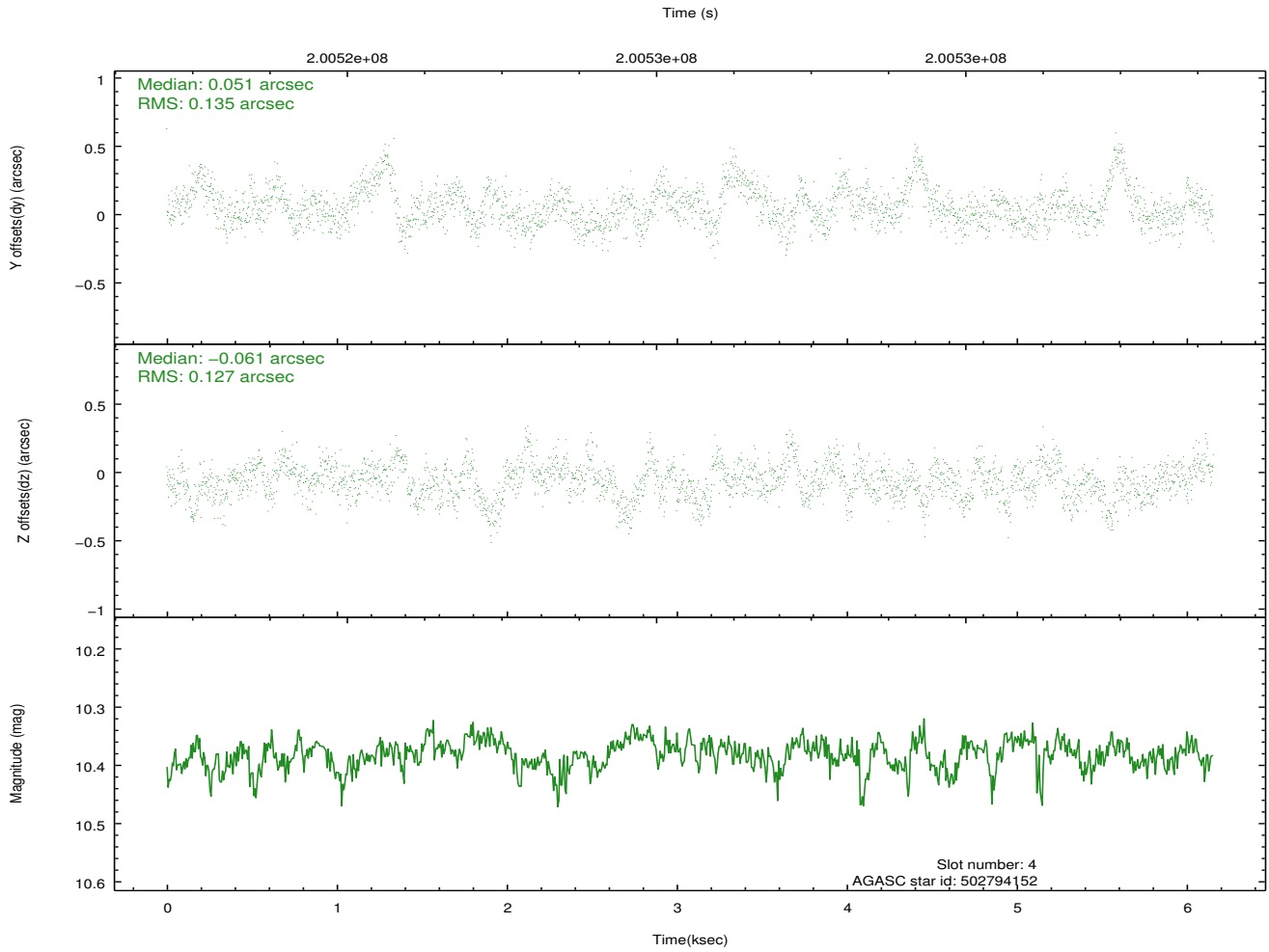
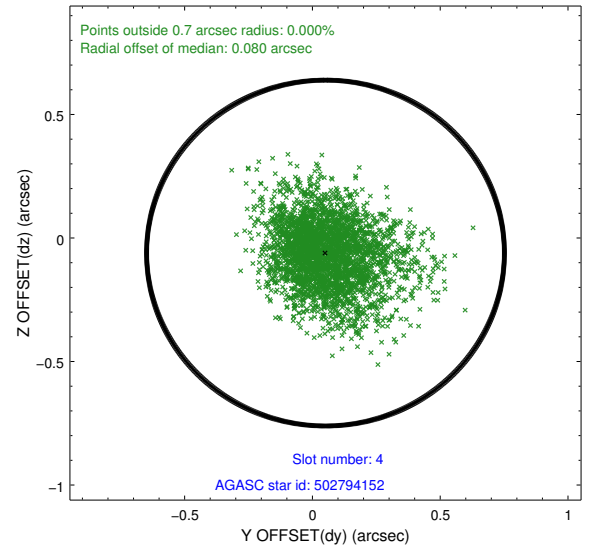
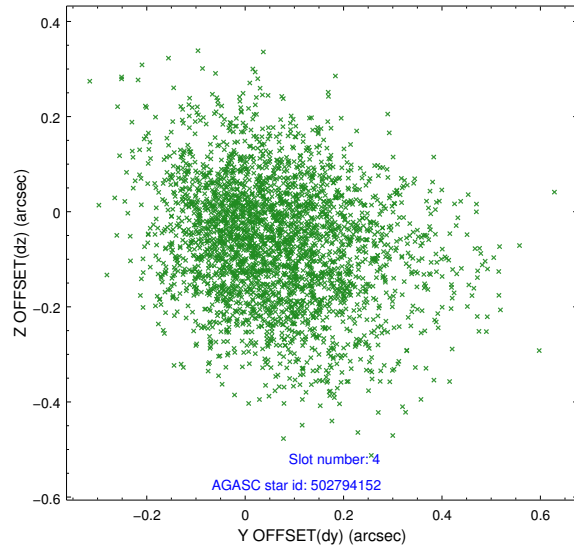
slot	status	id	mag	n_pts	med_dy	med_dz	dr1	dr2	ra	dec	mean_y	mean_z
0	FID	HRC-I-1	6.96	1502	0.011	0.025	0.008	0.013	0.000000	0.000000	-763.54	-1295.29
1	FID	HRC-I-2	7.00	1502	0.125	-0.107	0.007	0.011	0.000000	0.000000	848.70	-1297.88
2	FID	HRC-I-3	7.05	1502	-0.018	-0.007	0.006	0.011	0.000000	0.000000	-1191.45	1008.38
3	GUIDE	502793616	10.79	2991	0.146	-0.017	0.271	0.422	178.517911	55.423021	1552.56	-1183.59
4	GUIDE	502794152	10.38	3000	0.051	-0.061	0.191	0.331	178.195658	55.565439	1640.41	-2013.01
5	GUIDE	502795632	9.08	2996	-0.136	0.148	0.094	0.159	180.454171	55.827001	-2255.28	577.11
6	GUIDE	502796064	9.71	3002	-0.011	-0.085	0.126	0.203	178.783977	55.701683	454.88	-1494.78
7	GUIDE	502792376	9.89	3000	-0.059	0.014	0.135	0.219	180.437493	55.132253	-484.13	2343.07

2.4 Star Slots

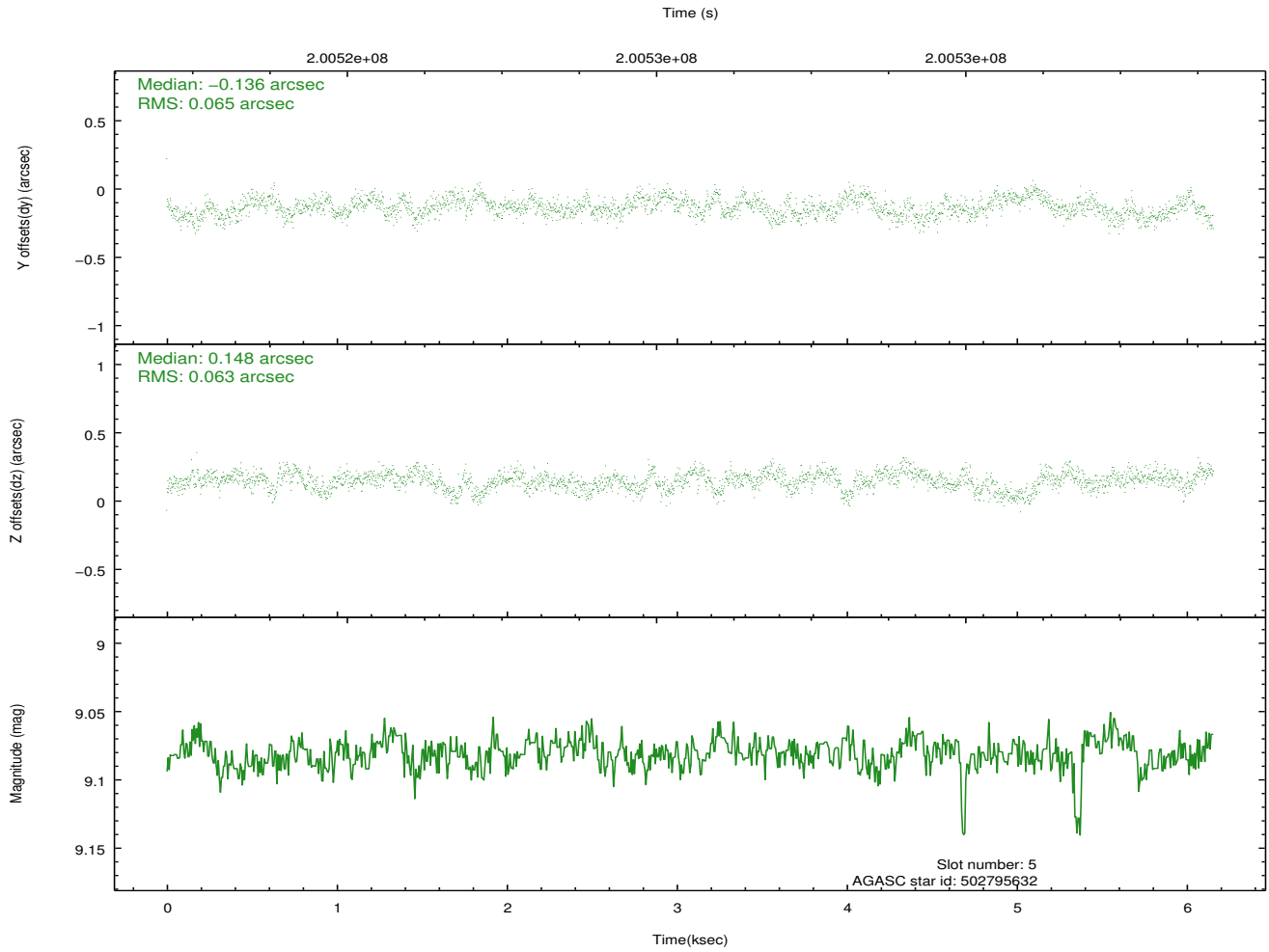
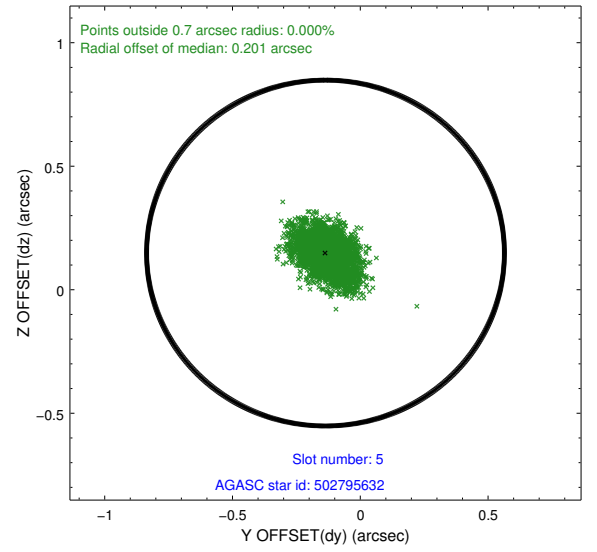
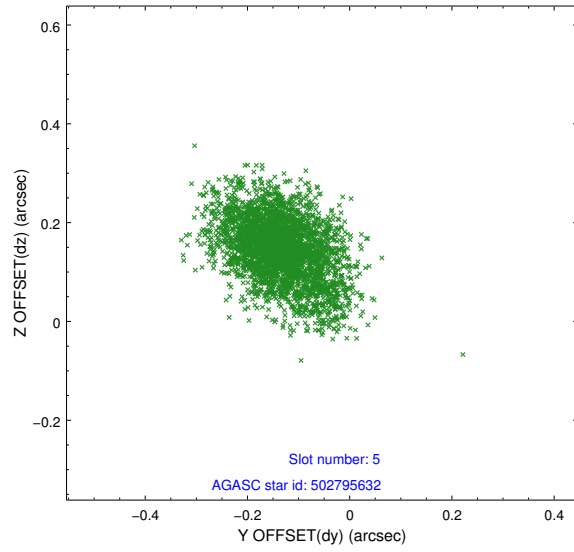
2.4.1 Slot 3



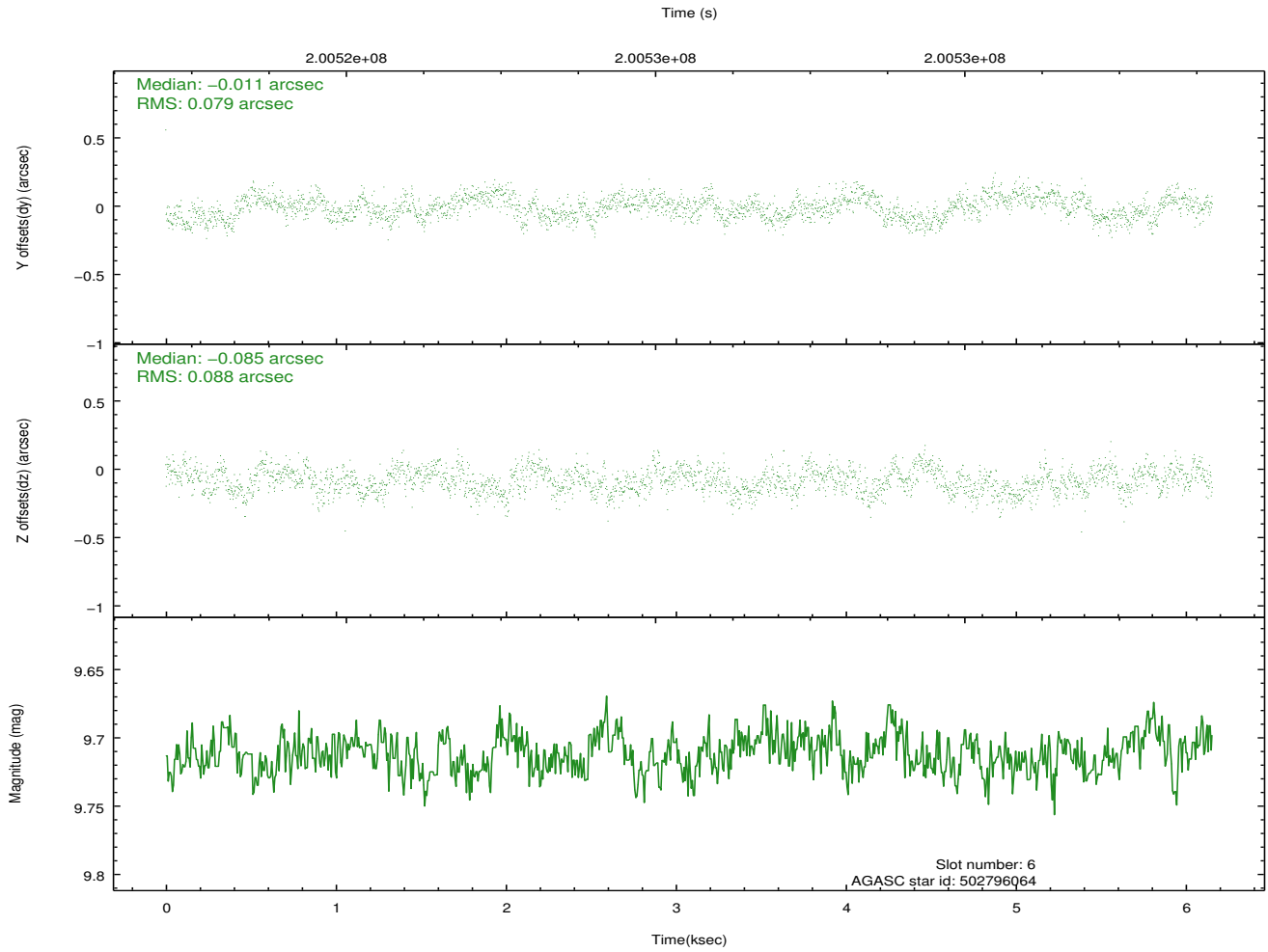
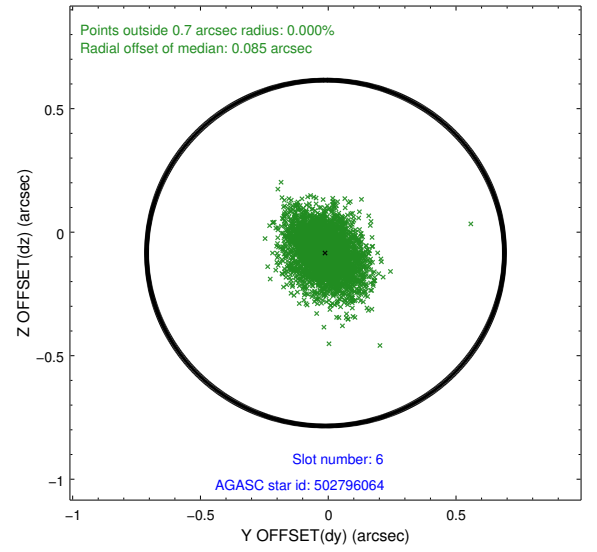
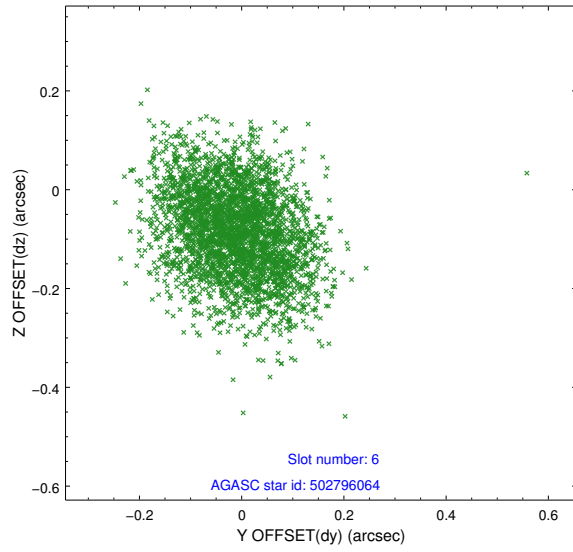
2.4.2 Slot 4



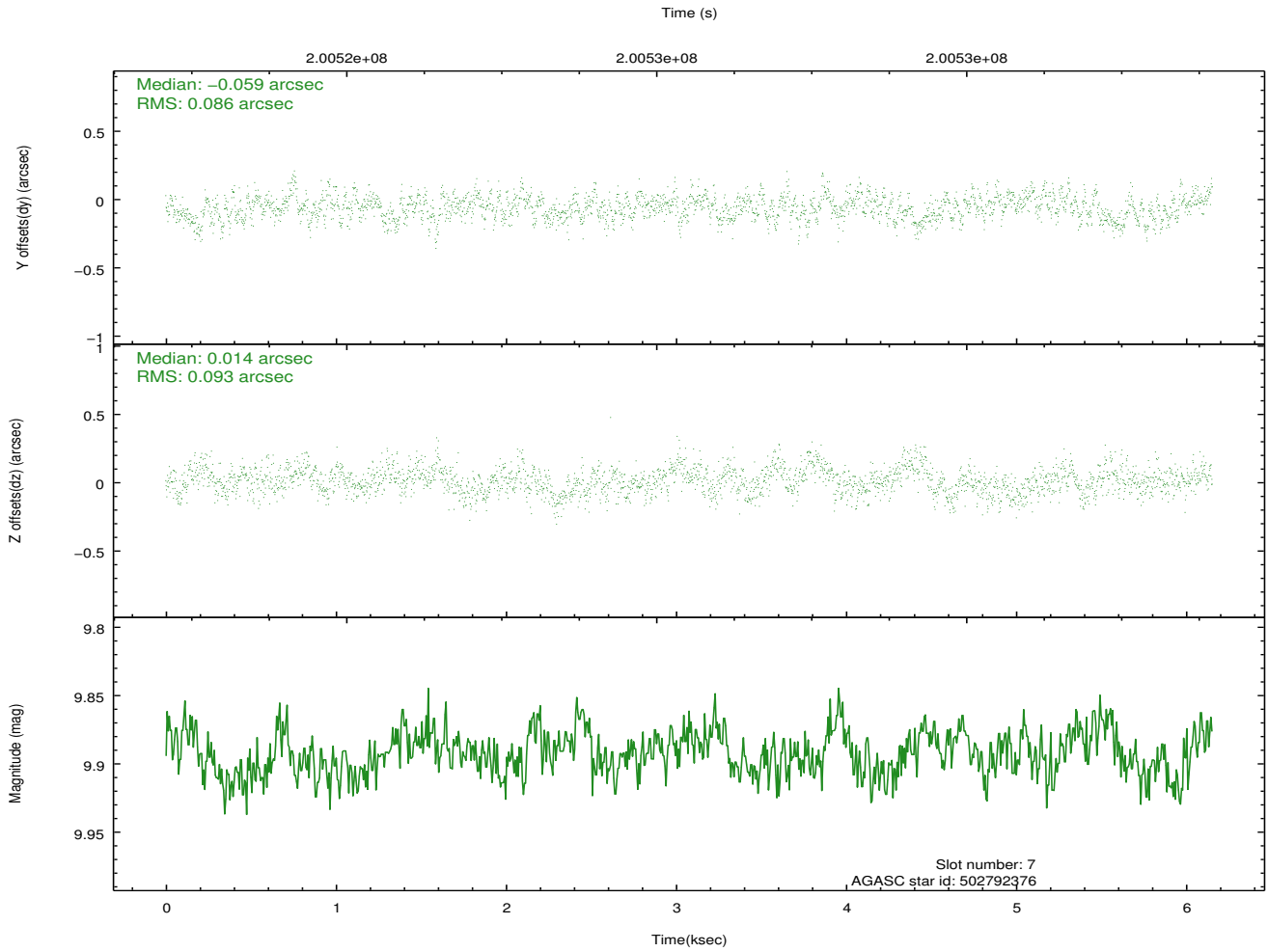
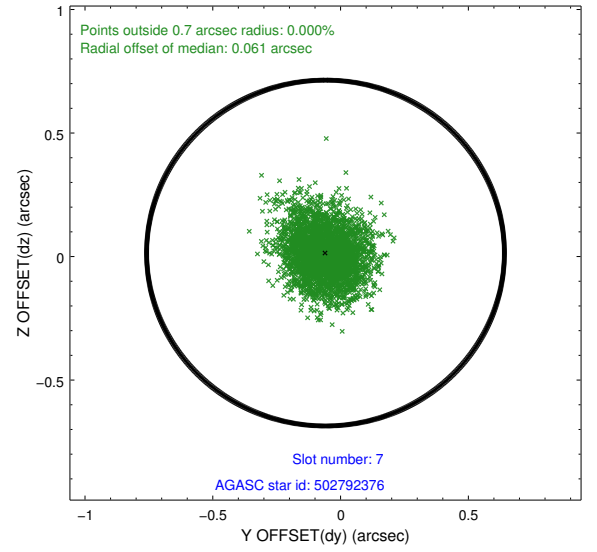
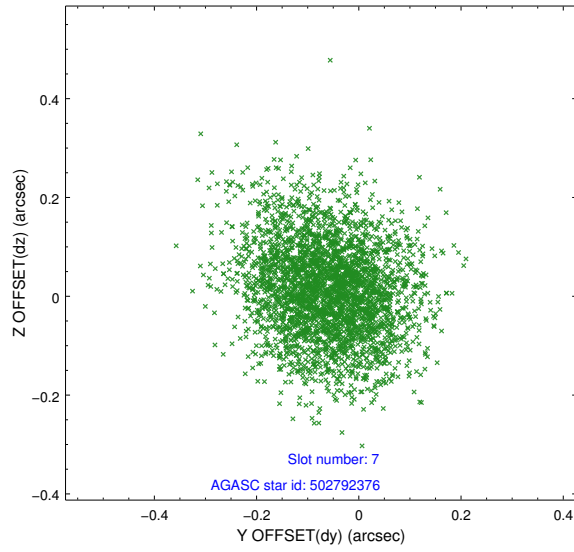
2.4.3 Slot 5



2.4.4 Slot 6

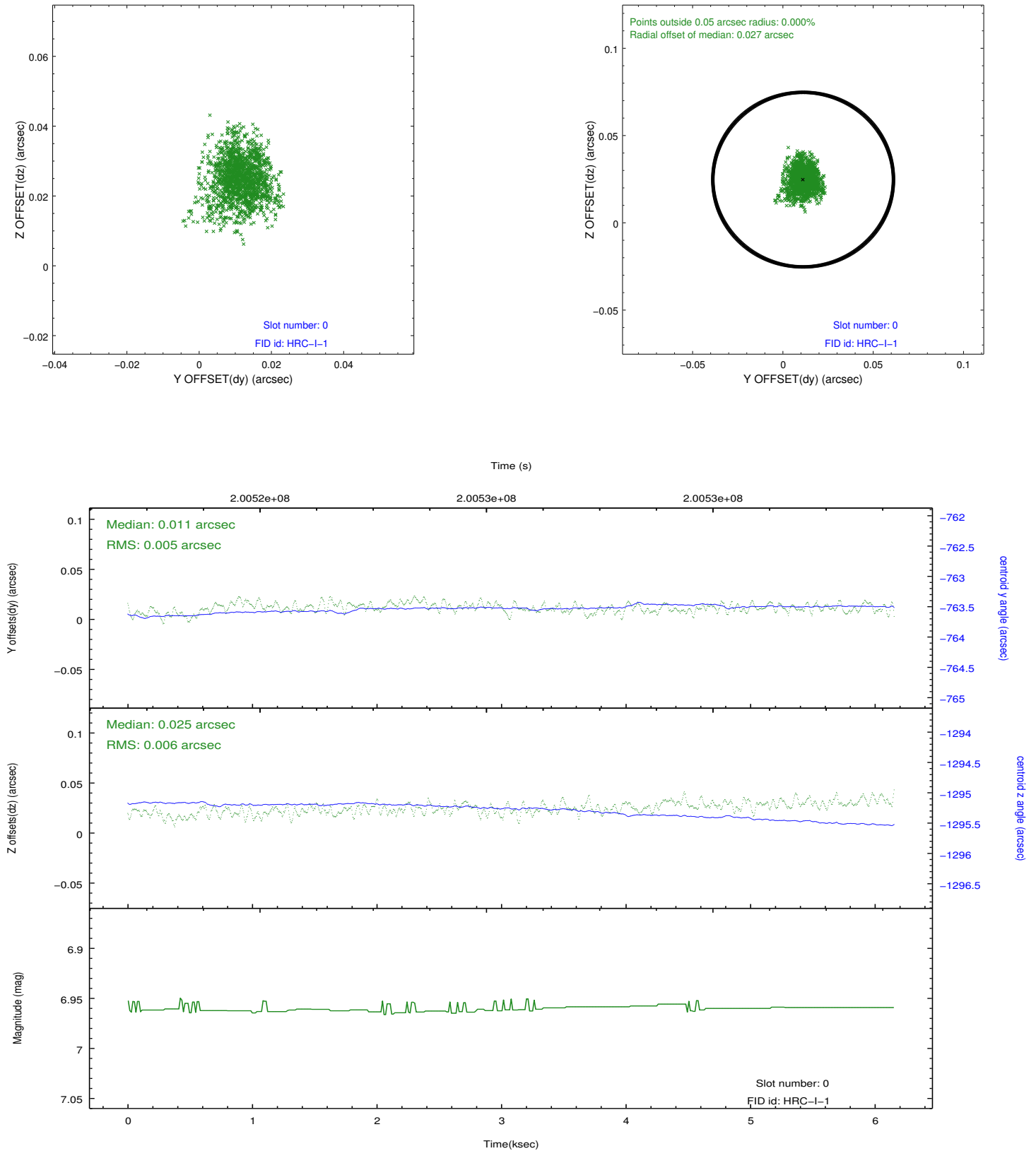


2.4.5 Slot 7

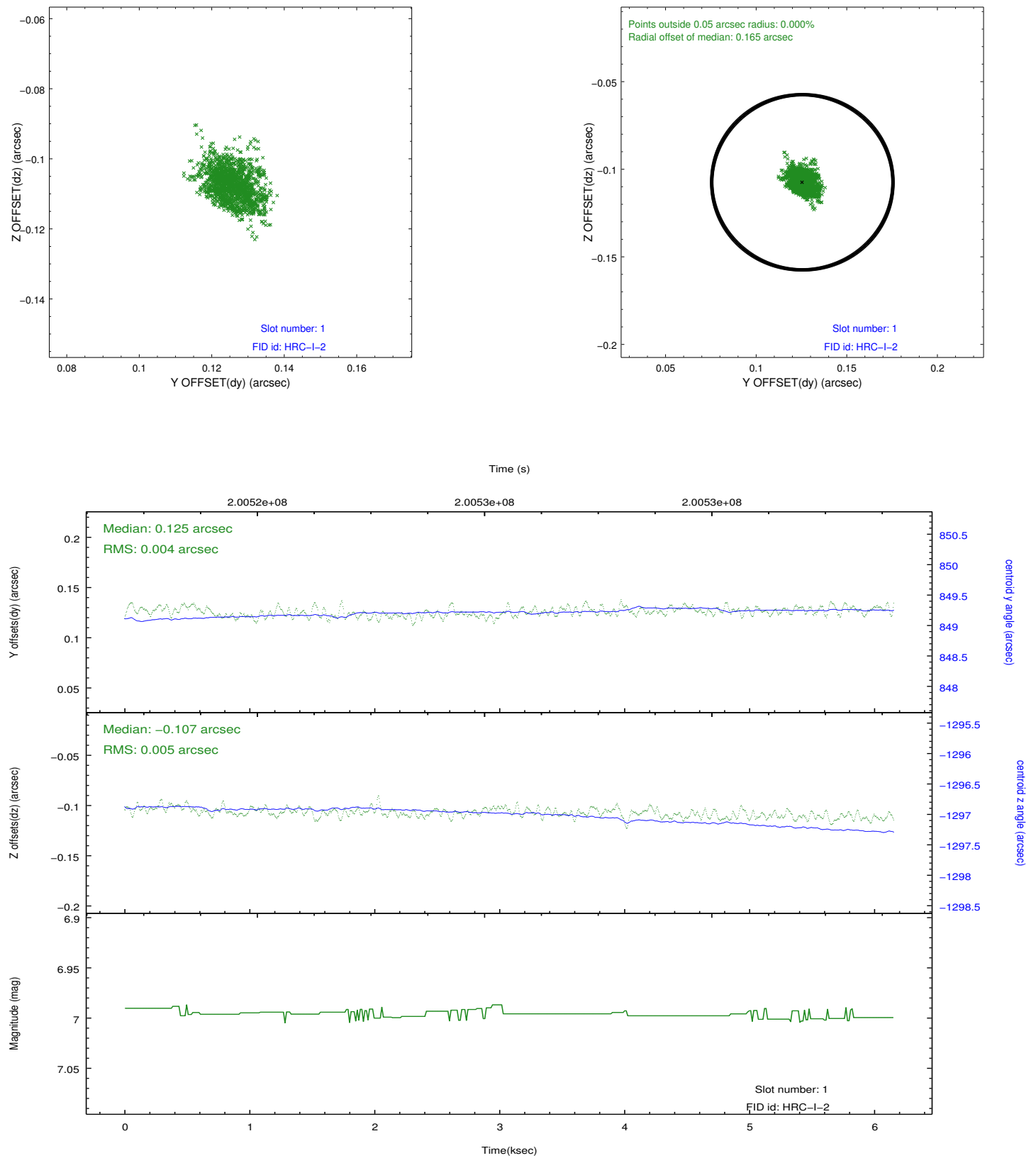


2.5 FID Slots

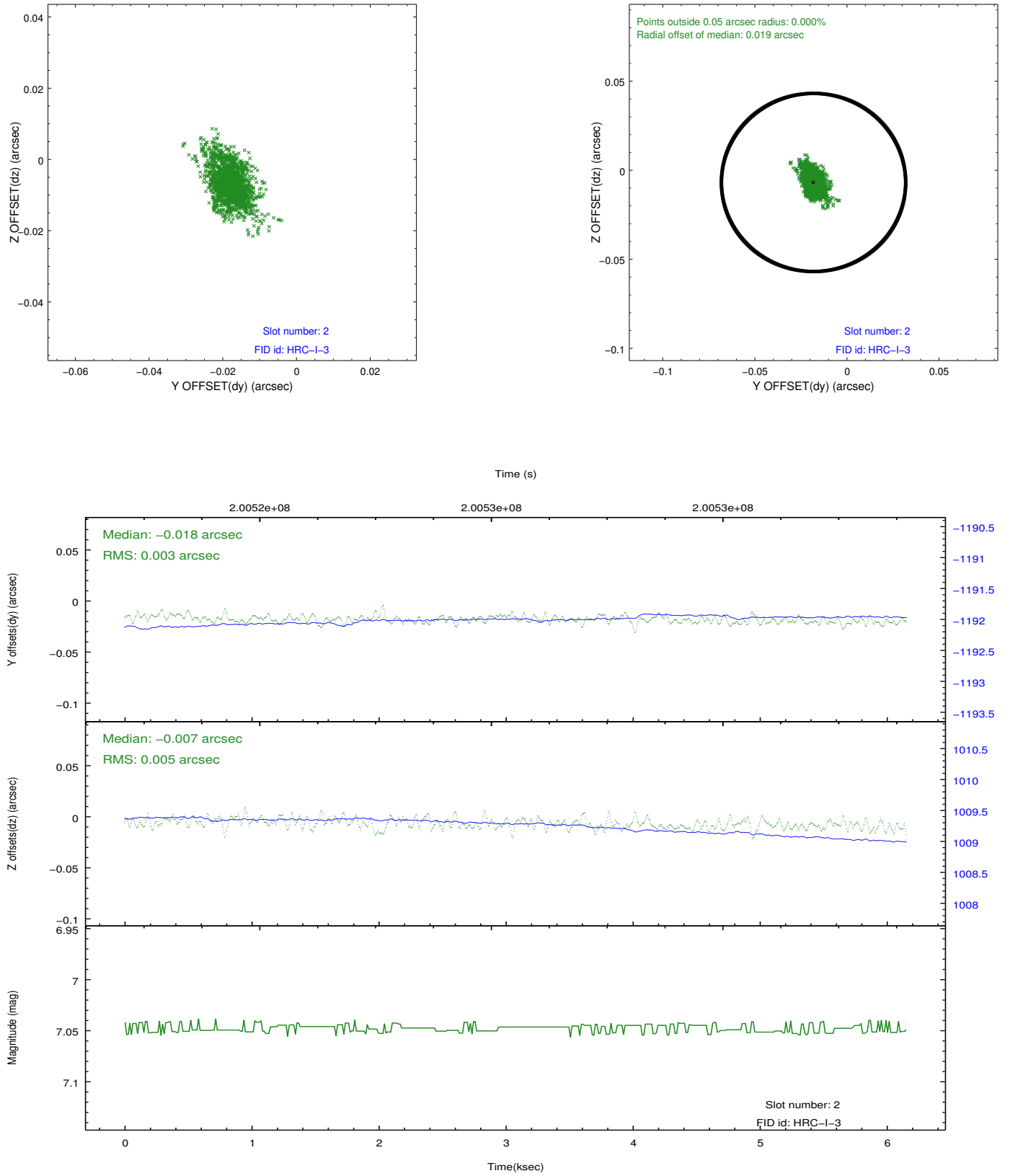
2.5.1 Slot 0



2.5.2 Slot 1



2.5.3 Slot 2



A Summary

A.1 Status

V&V Scientist	Jen Lauer
V&V Date (YYYY-MM-DD)	2012.12.17
V&V Edition	1
V&V Disposition and Status	OK
V&V Charge Time	5.894

A.2 Comments

Joint Proposal: HST