

V&V Reference Report

L2 ASCDS Version : 7.6.7.2

Observation 4675 - L2 Version 001
Chandra X-Ray Center

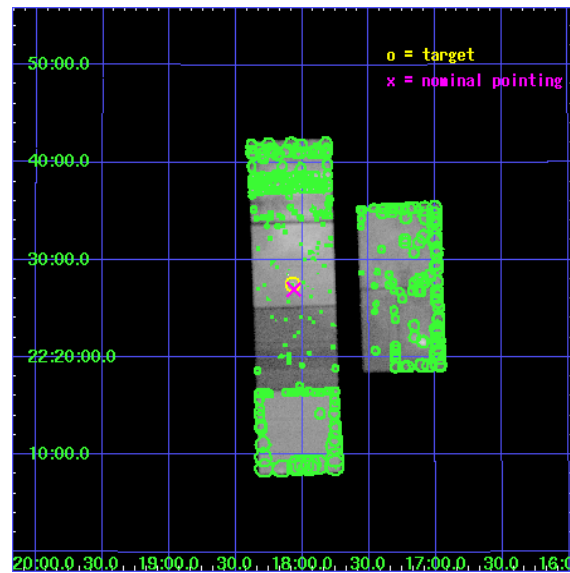
L2 Processing Date : May 25 2006

Contents

1	Front	2
2	OBI	3
2.1	OBI	3
2.1.1	Images	3
2.1.2	Bias	3
2.1.3	Parameters	4
2.1.4	Events	4
2.2	Compared Parameters	5
2.3	Aspect	6
2.4	Star Slots	9
2.4.1	Slot 3	9
2.4.2	Slot 4	10
2.4.3	Slot 5	11
2.4.4	Slot 6	12
2.4.5	Slot 7	13
2.5	FID Slots	14
2.5.1	Slot 0	14
2.5.2	Slot 1	15
2.5.3	Slot 2	16
3	Point Sources	17
A	Summary	18
A.1	Status	18
A.2	Comments	18

1 Front

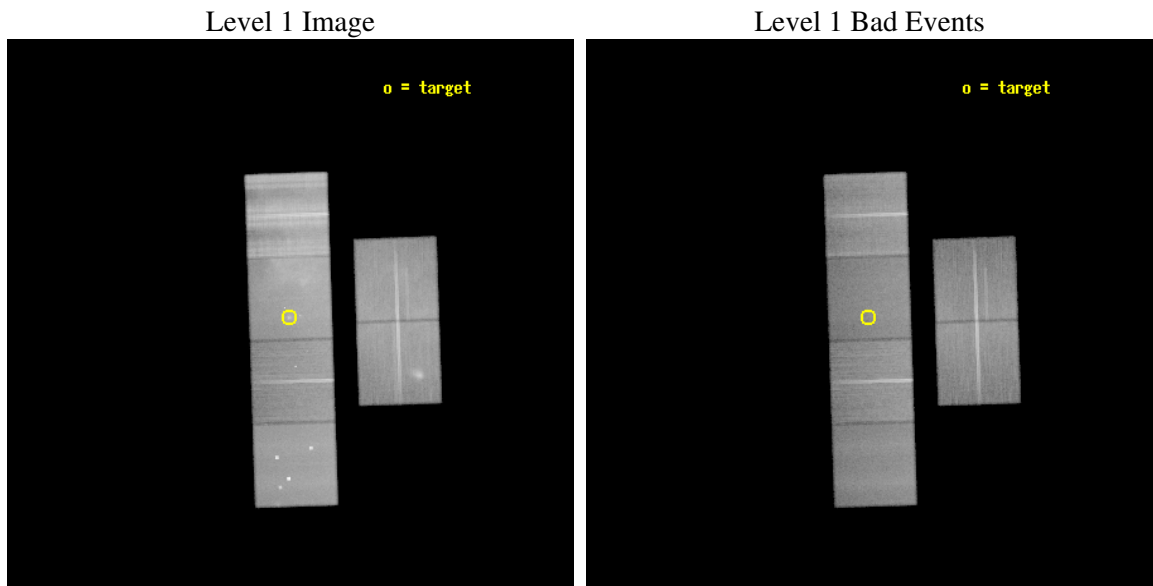
seq_num	500494
obs_id	4675
title	Study of IC 443 Ejecta Fragments in a Molecular Cloud
observer	Dr Andrei Bykov
object	1SAX J0618.0+2227
dtcycle	0
cycle	P
ra_targ	94.517917
dec_targ	22.459111
ra_nom	94.515744593809
dec_nom	22.44966509892
roll_nom	268.09064865264
revision	2
ontime	59203.035928309
livetime	58453.371439596
ontime2	59186.83107689
ontime3	59183.590126663
ontime5	59206.276908457
ontime6	59190.072047174
ontime7	59203.035928309
ontime8	59203.035968065
l2events	1506033



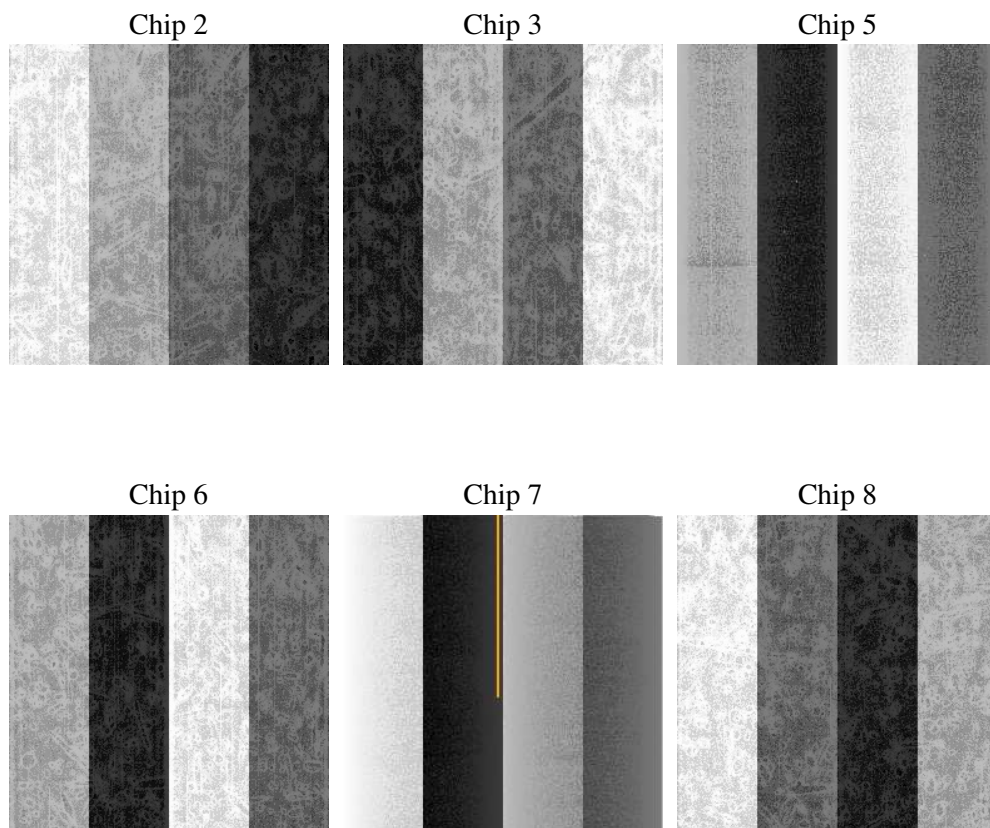
2 OBI

2.1 OBI

2.1.1 Images



2.1.2 Bias



2.1.3 Parameters

obi_num	0
ascdsver	7.6.7.2
caldsver	3.2.2
date	2006-05-25T14:07:35
revision	2

sched_exp_time	59063.429000
ontime	59401.07888484
ontime2	59384.874033421
ontime3	59381.633083194
ontime5	59404.319864988
ontime6	59388.115003705
ontime7	59401.07888484
ontime8	59404.31994465
l1events	4292634

2.1.4 Events

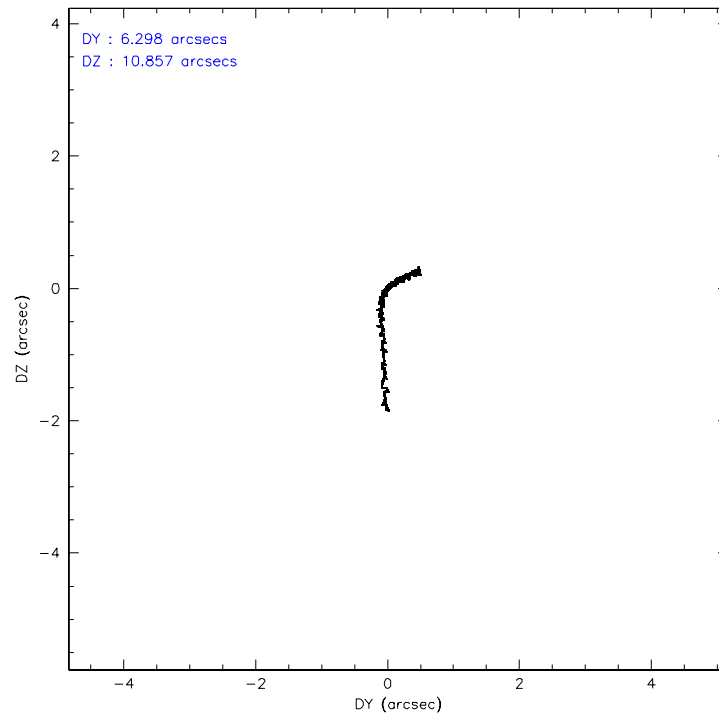
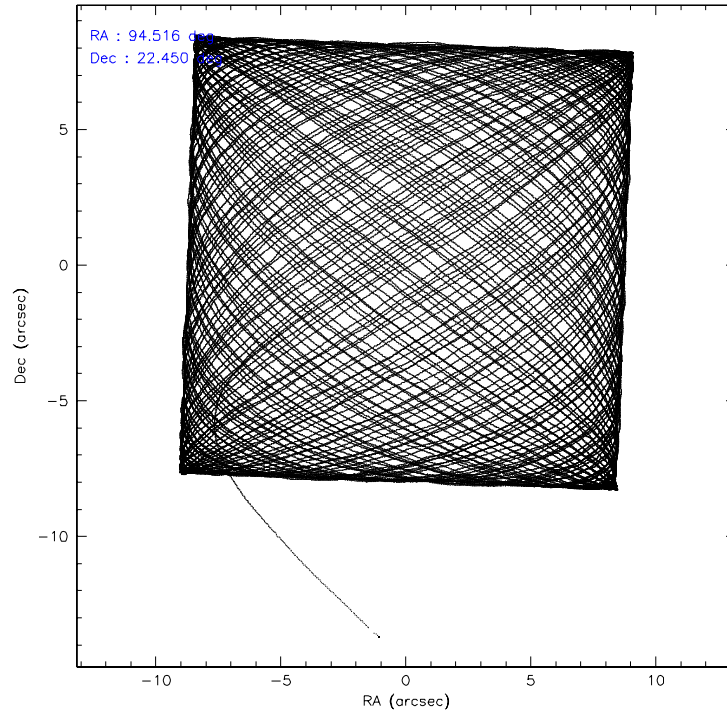
	ccd 2	ccd 3	ccd 5	ccd 6	ccd 7	ccd 8
level 1 events	614585	658907	670148	532655	771916	1044423
rejected events	435151	408118	364754	434451	355141	495791
rejected %	70%	61%	54%	81%	46%	47%

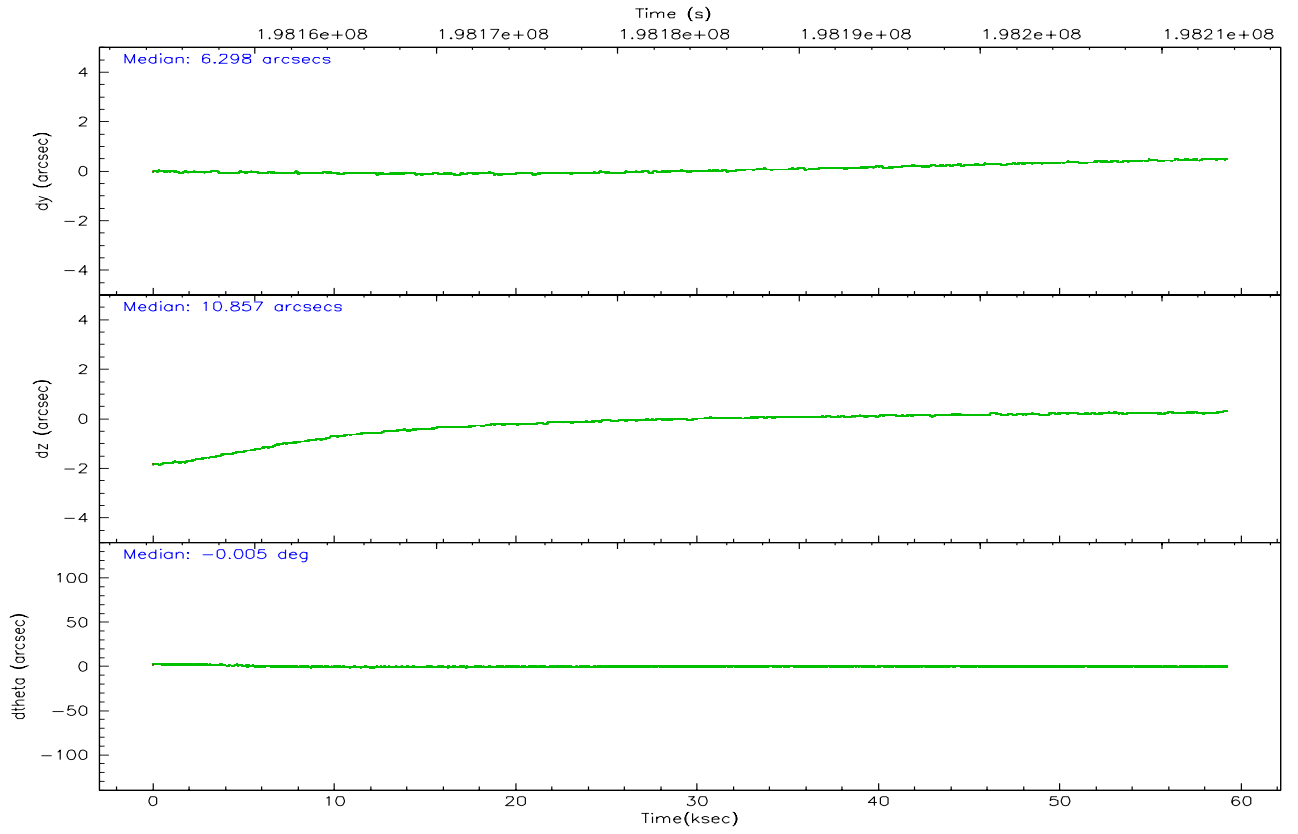
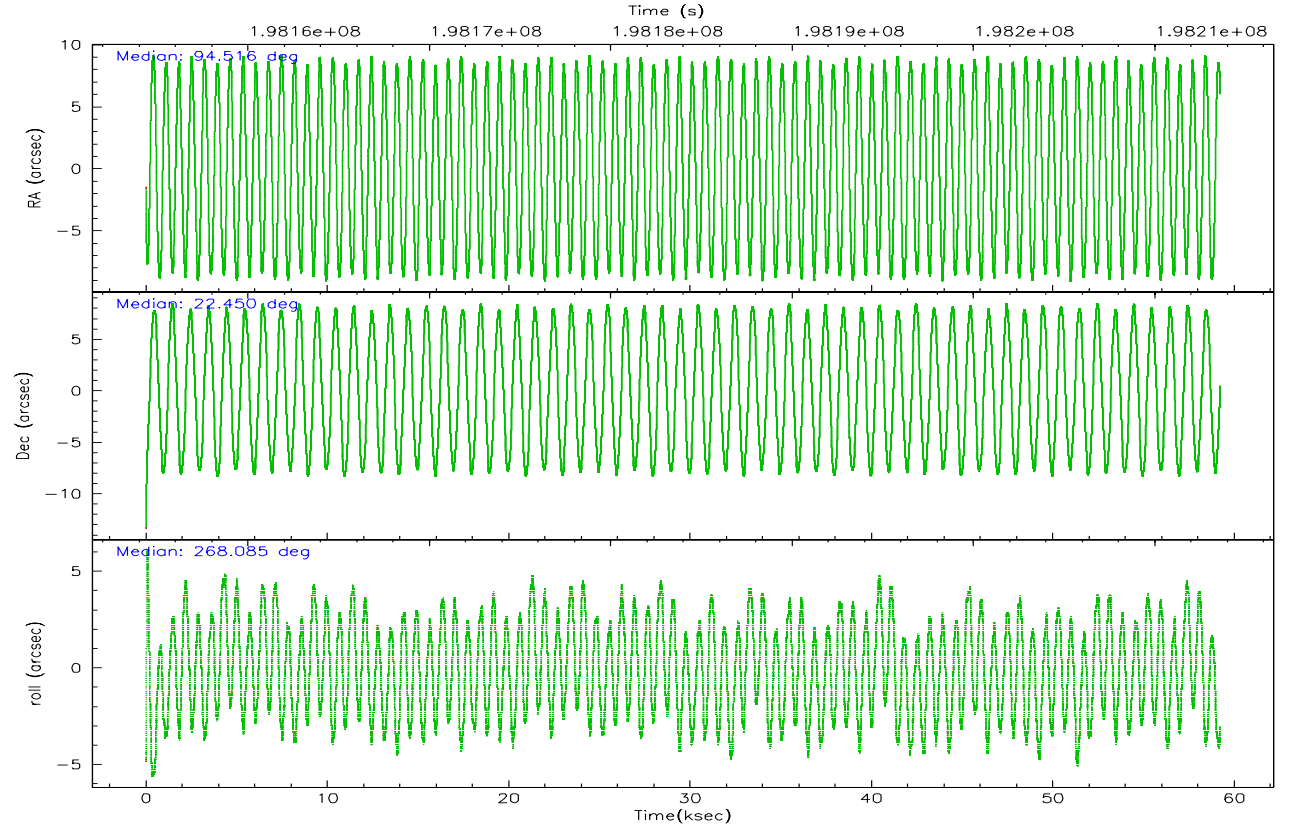
	ccd 2	ccd 3	ccd 5	ccd 6	ccd 7	ccd 8
grade 0 events	122079	187591	37189	52580	70247	264606
	19%	28%	5%	9%	9%	25%
grade 1 events	840	982	731	360	459	1563
	0%	0%	0%	0%	0%	0%
grade 2 events	27348	30969	92674	20780	114562	72643
	4%	4%	13%	3%	14%	6%
grade 3 events	7813	9289	8682	5802	33702	66783
	1%	1%	1%	1%	4%	6%
grade 4 events	8935	9289	8495	5652	33183	60900
	1%	1%	1%	1%	4%	5%
grade 5 events	17203	18749	30174	19437	38838	29183
	2%	2%	4%	3%	5%	2%
grade 6 events	13785	14408	159496	13680	166322	86041
	2%	2%	23%	2%	21%	8%
grade 7 events	416582	387630	332707	414364	314603	462704
	67%	58%	49%	77%	40%	44%

2.2 Compared Parameters

Parameter	Planned	Actual	Parameter	Planned	Actual
Instrument	ACIS	ACIS	Obspar format version number	6	6
Detector	ACIS-235678	ACIS-235678	Obspar file type	PREDICTED	ACTUAL
Grating	NONE	NONE	Obspar update status	NONE	UPDATED
Data mode	FAINT	FAINT	On-chip summing requested	N	N
Observation mode	POINTING	POINTING	Subarray requested	NONE	NONE
Pointing RA	94.501517	94.51574459380856	Alternating exposures requested	N	N
Pointing Dec	22.473500	22.44966509892032	Primary exposure time	0.000000	3.2
Pointing Roll	267.939460	268.0906486526443			
SIM focus pos (mm)	-0.684267	-0.6828225247311905			
SIM defocus (mm)	0	0.001444936568705701			
SIM translation stage pos (mm)	-190.132523	-190.1400660498719			
SIM translation stage offset (mm)	0	0.00754346686406393			
Observation start time	198154533.184000	198153377.04785			
Observation start date	2004-04-12T10:54:29	2004-04-12T10:36:17			
Observation end time	198213597.184000	198215070.77556			
Observation end date	2004-04-13T03:18:53	2004-04-13T03:44:30			
Read mode	TIMED	TIMED			

2.3 Aspect



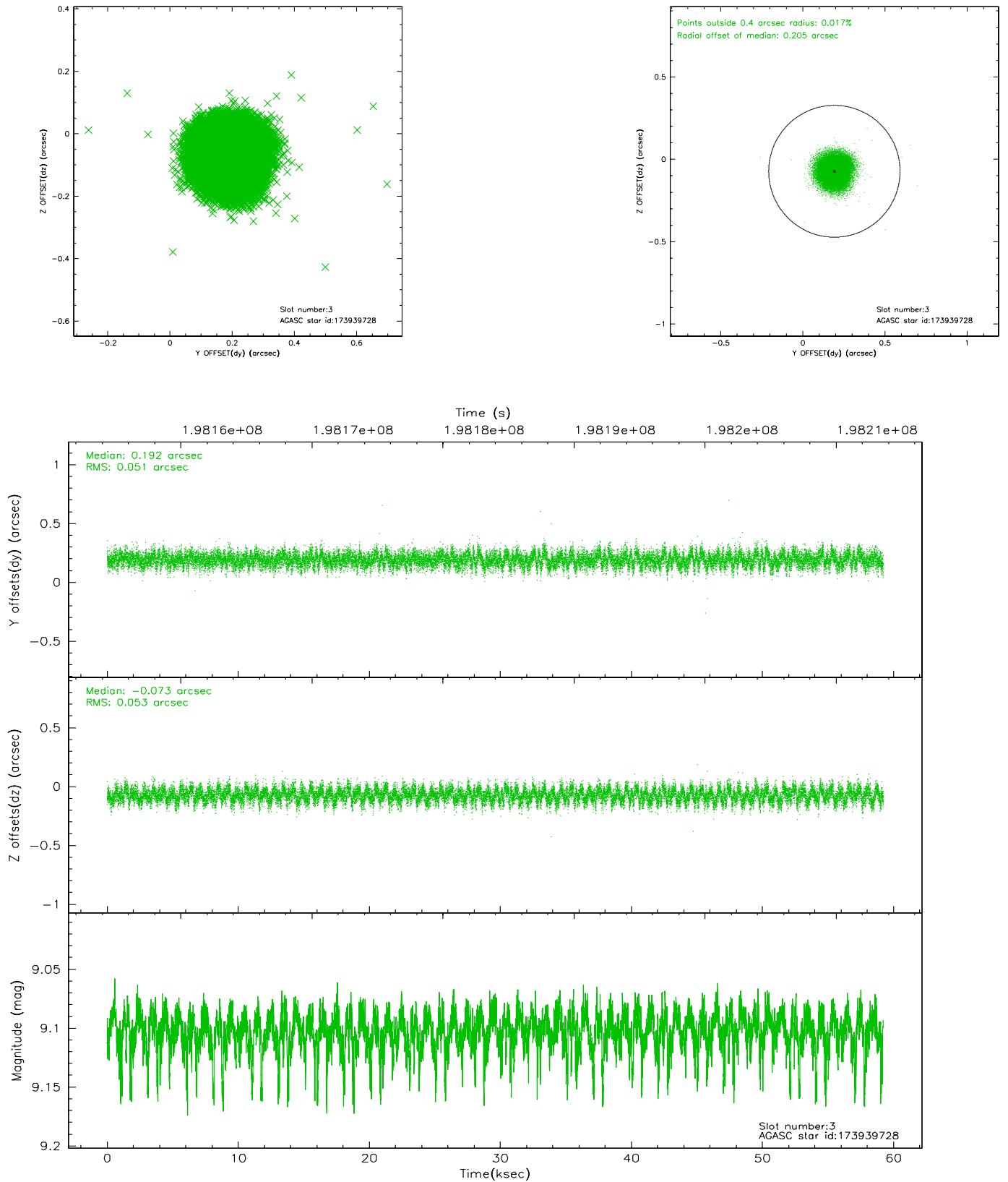


Slot Statistics

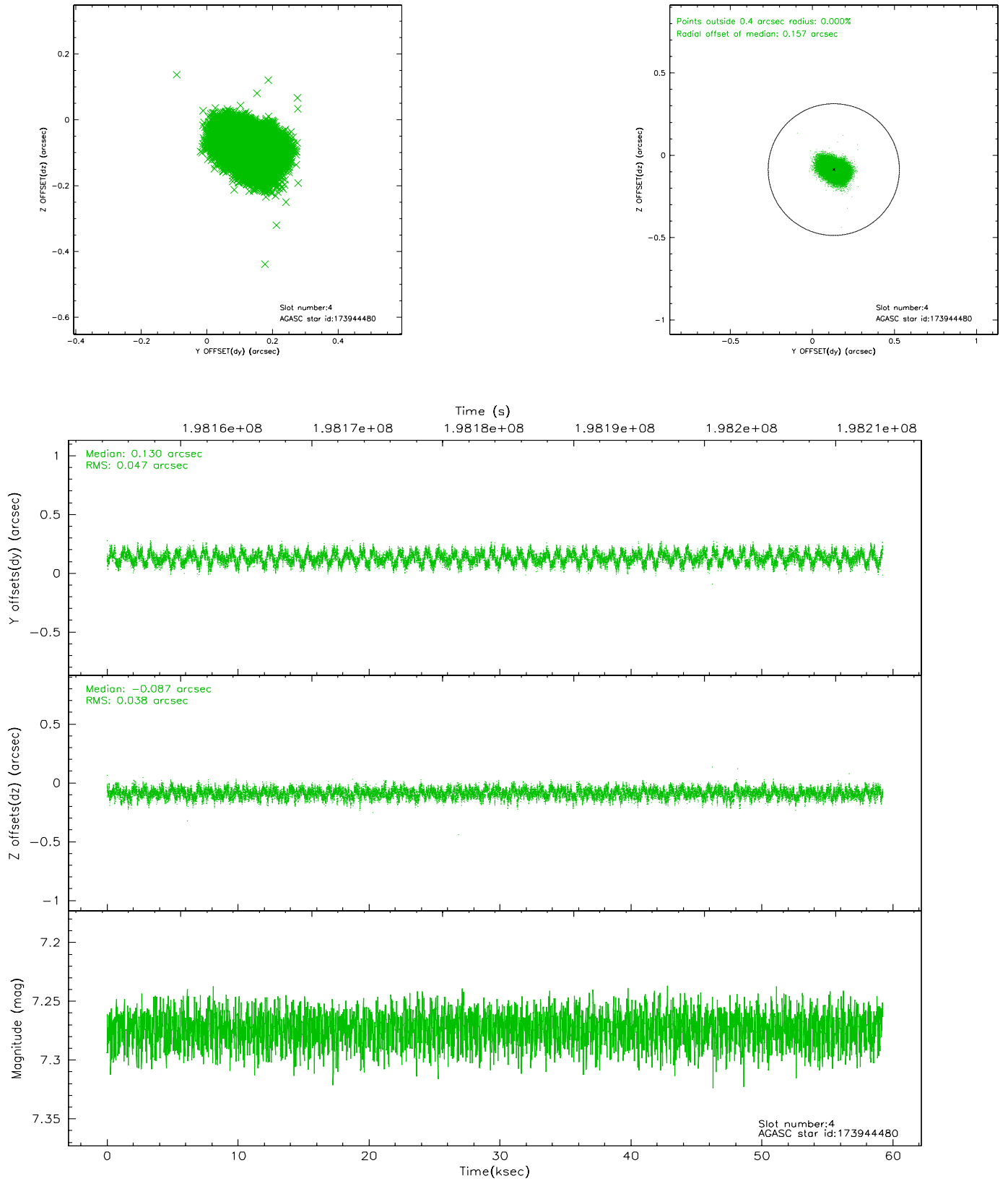
slot	status	id	mag	n_pts	med_dy	med_dz	dr1	dr2	ra	dec	mean_y	mean_z
0	FID	ACIS-S-2	7.10	14423	-0.047	0.004	0.011	0.025	0.000000	0.000000	-759.14	-1731.90
1	FID	ACIS-S-4	7.20	14415	0.039	0.022	0.010	0.018	0.000000	0.000000	2154.21	176.69
2	FID	ACIS-S-5	7.23	14422	-0.023	-0.017	0.009	0.025	0.000000	0.000000	-1812.04	170.22
3	GUIDE	173939728	9.10	28746	0.192	-0.073	0.079	0.125	94.298523	22.069399	1478.17	-624.12
4	GUIDE	173944480	7.27	28859	0.130	-0.087	0.066	0.102	94.334818	22.143978	1205.57	-512.56
5	GUIDE	246160408	8.09	28854	-0.169	0.042	0.057	0.095	94.748784	23.001135	-1928.46	750.71
6	GUIDE	246160608	8.76	28844	-0.103	0.072	0.083	0.136	94.789542	22.968548	-1816.39	890.21
7	GUIDE	246161912	8.77	28844	-0.057	0.049	0.072	0.116	95.035375	22.854503	-1437.74	1720.71

2.4 Star Slots

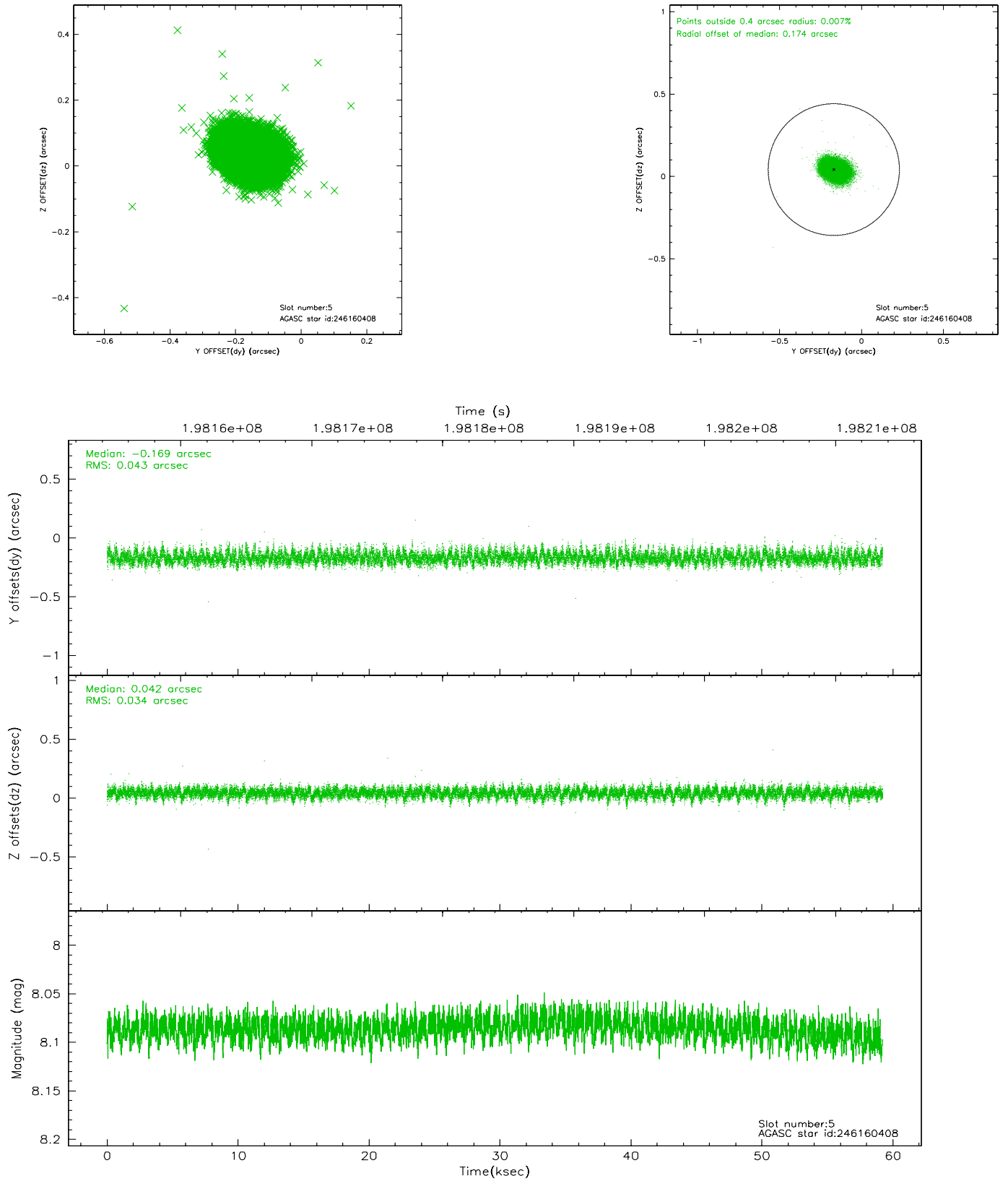
2.4.1 Slot 3



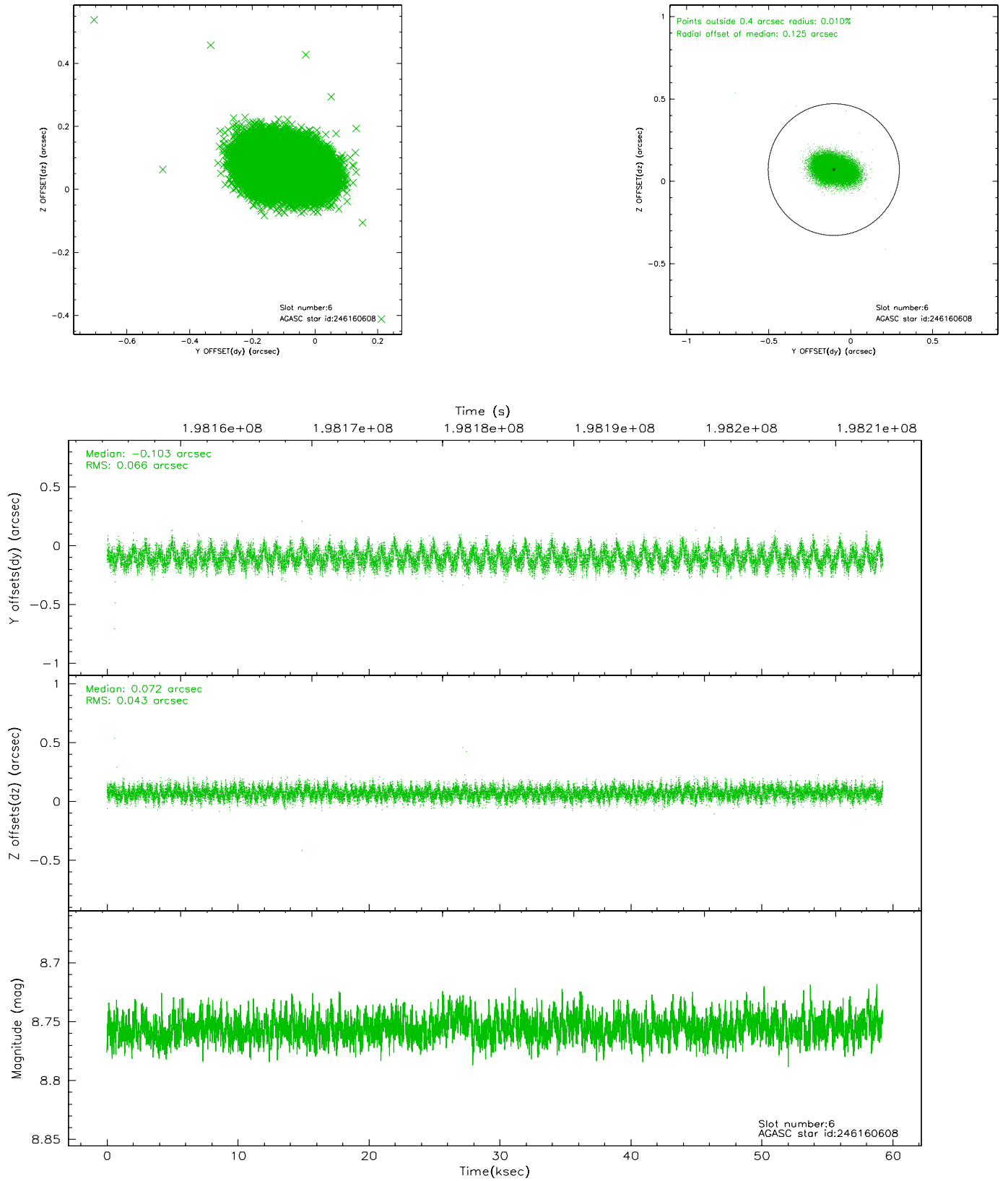
2.4.2 Slot 4



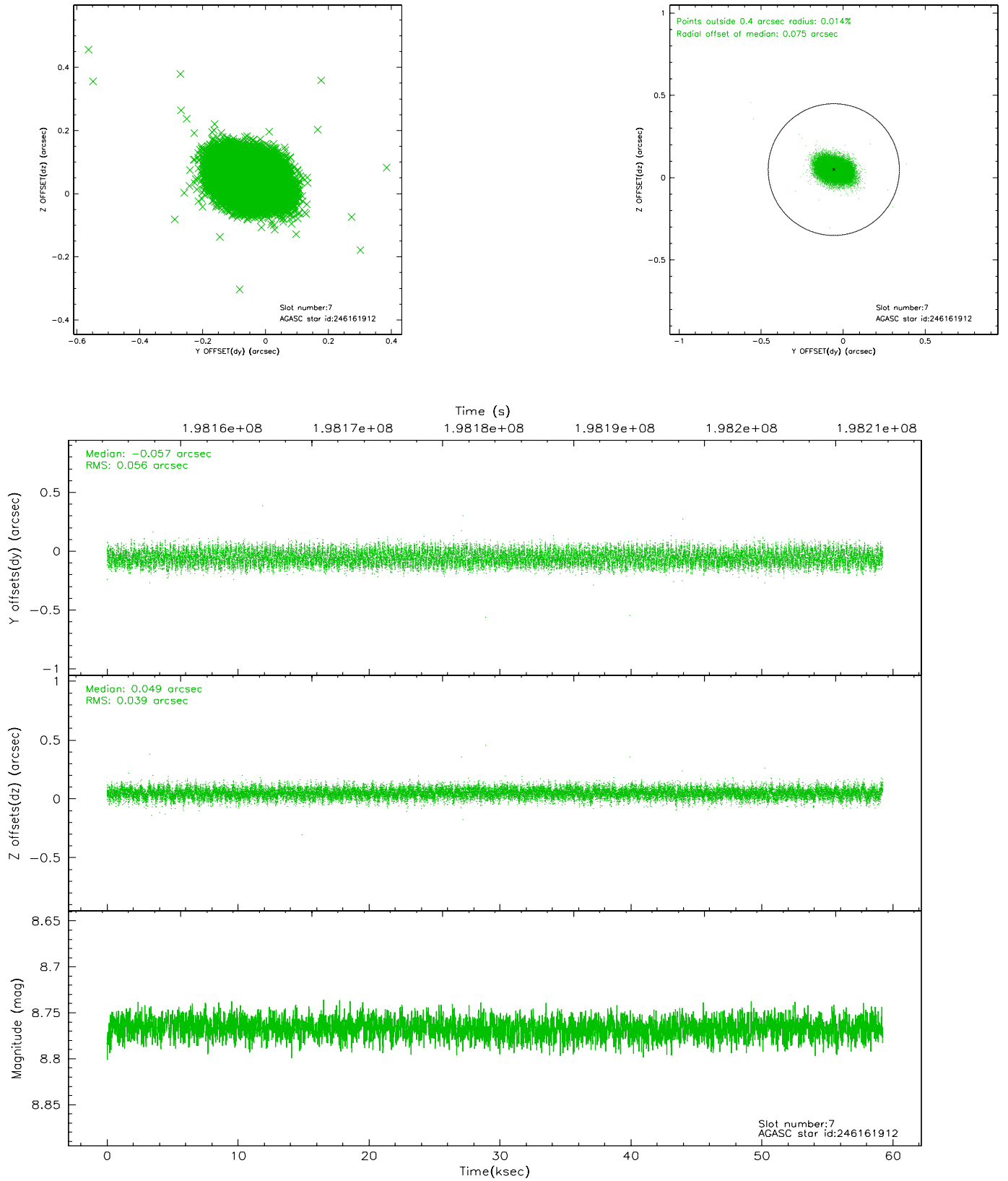
2.4.3 Slot 5



2.4.4 Slot 6

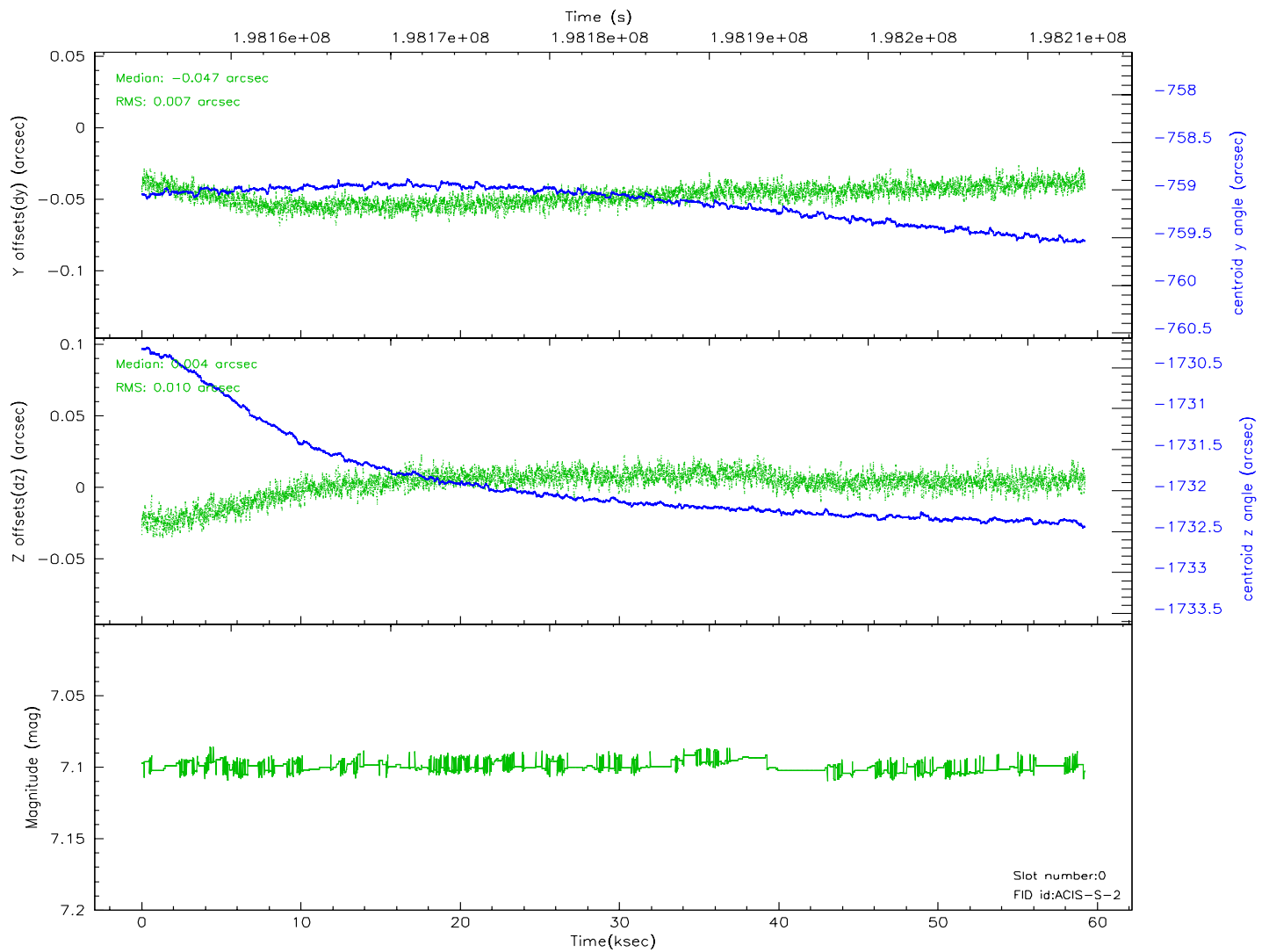
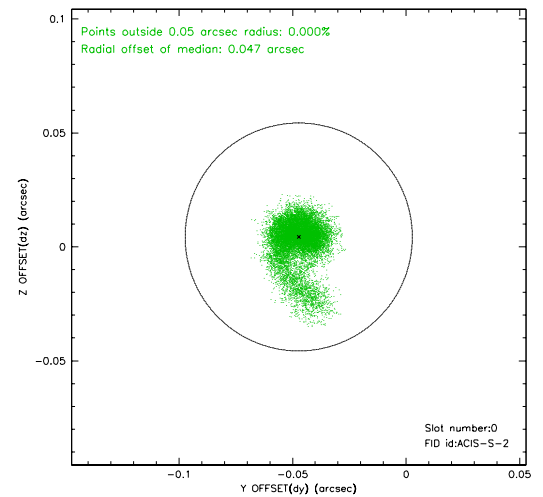
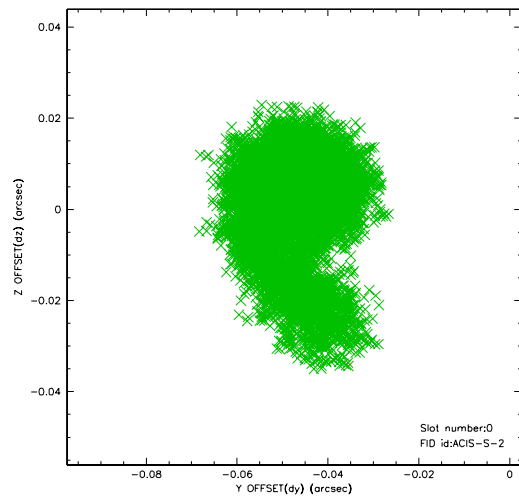


2.4.5 Slot 7

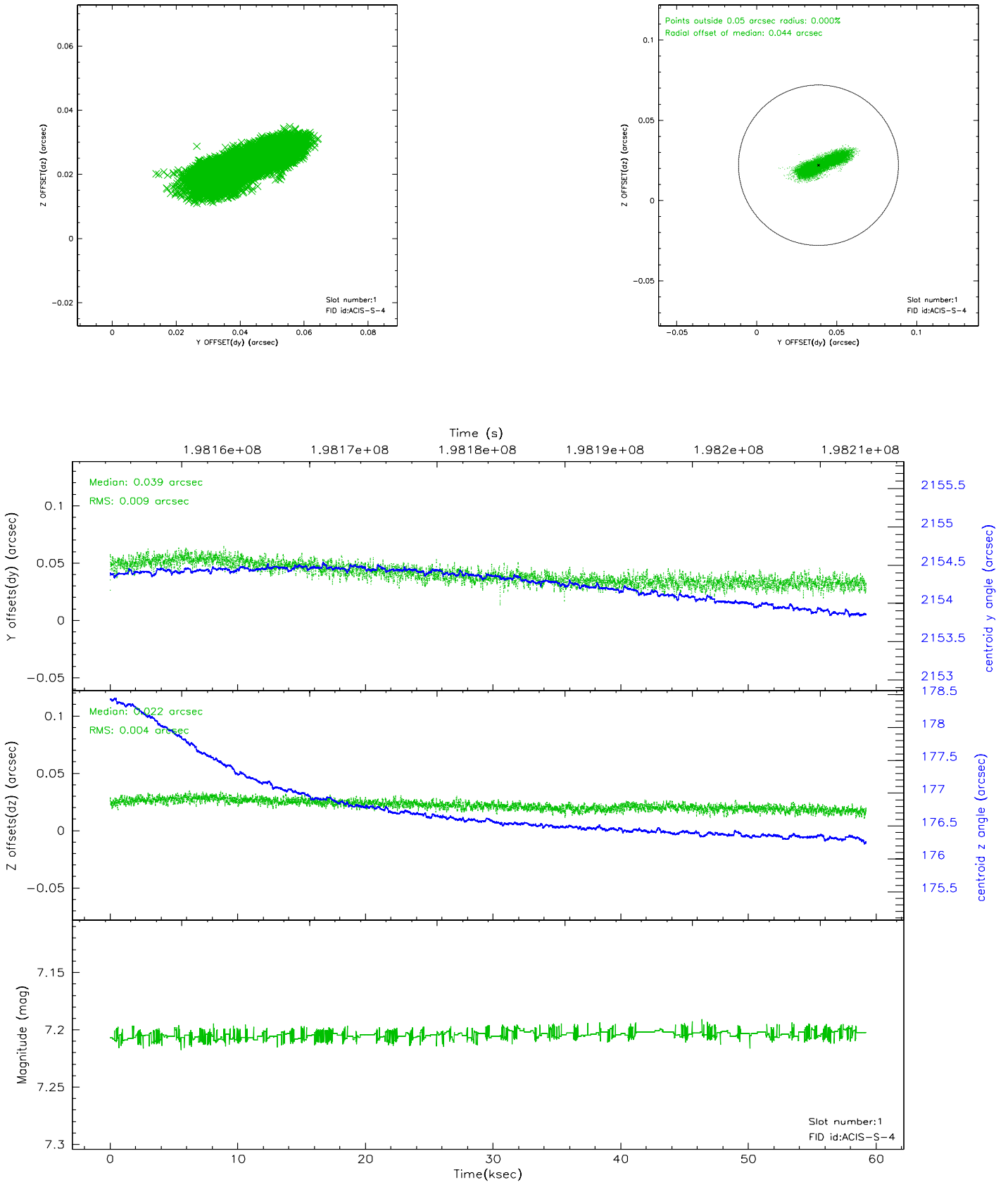


2.5 FID Slots

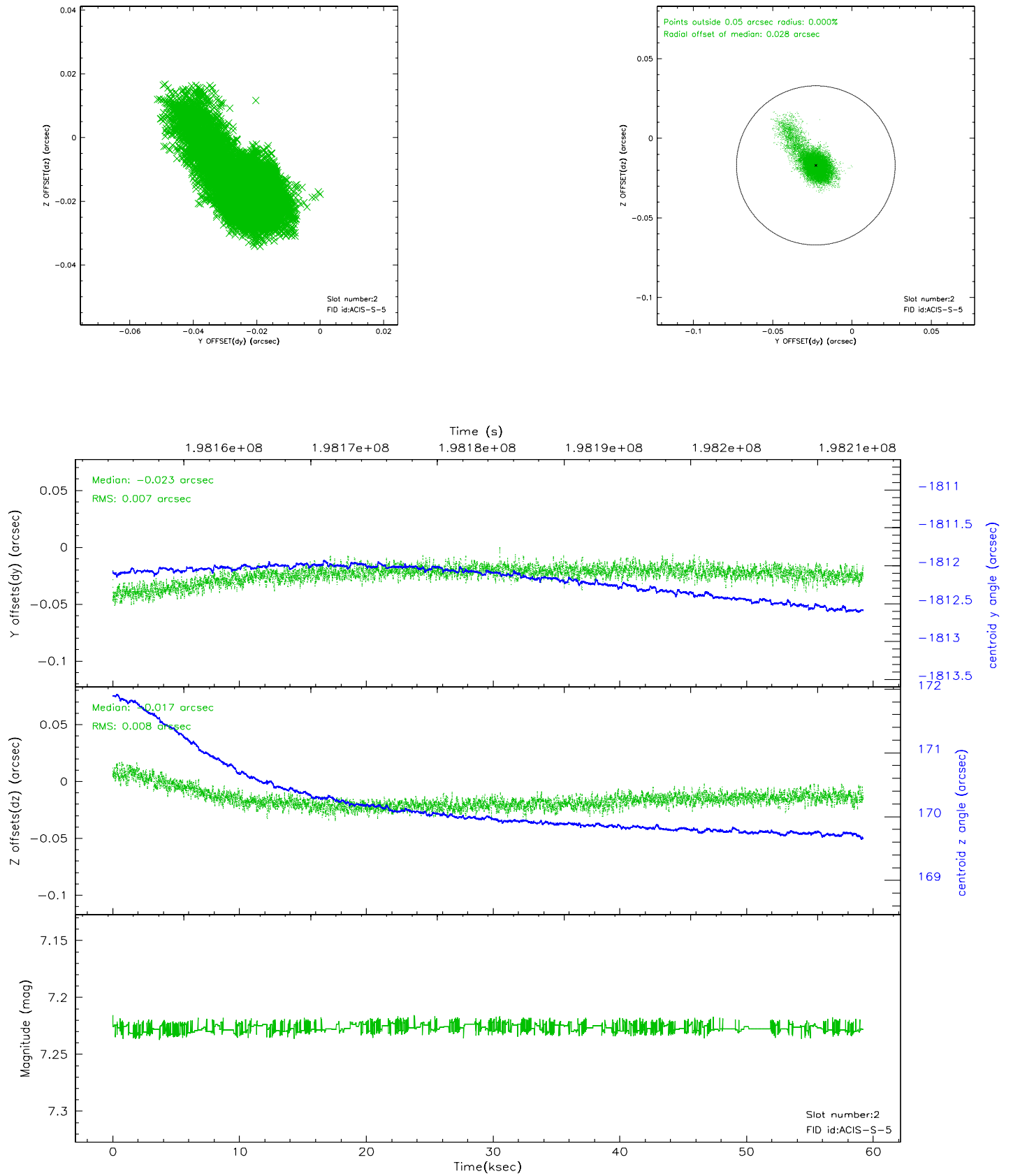
2.5.1 Slot 0



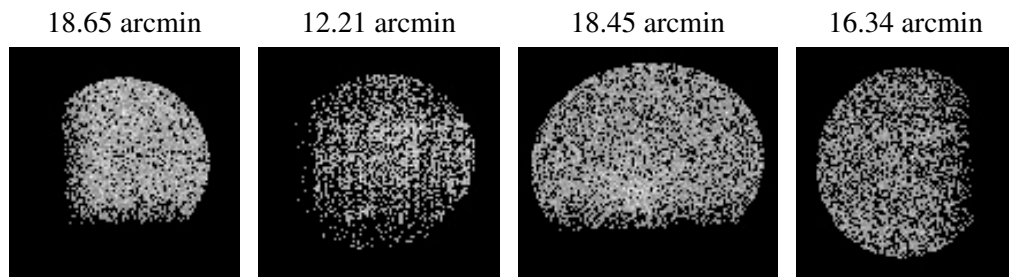
2.5.2 Slot 1



2.5.3 Slot 2



3 Point Sources



A Summary

A.1 Status

V&V Scientist	Beth Sundheim
V&V Date (YYYY-MM-DD)	2006.05.25
V&V Edition	1
V&V Disposition and Status	OK
V&V Charge Time	59.193

A.2 Comments