

V&V Reference Report

L2 ASCDS Version : 7.6.7.2

Observation 4525 - L2 Version 3
Chandra X-Ray Center

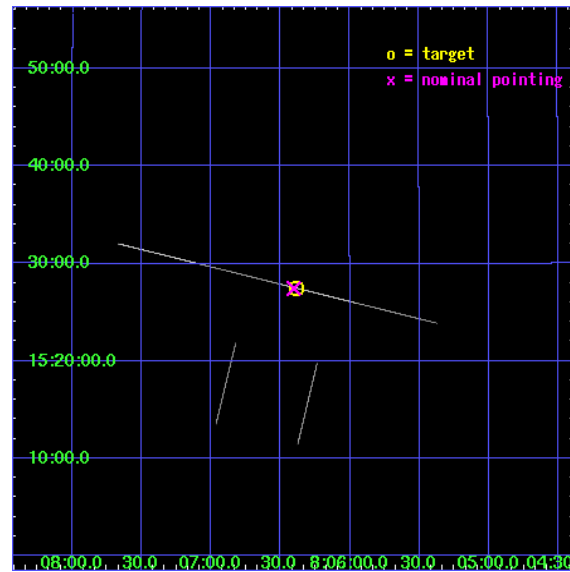
L2 Processing Date : Apr 11 2008

Contents

1	Front	2
2	OBI	3
2.1	OBI	3
2.1.1	Images	3
2.1.2	Parameters	4
2.1.3	Events	4
2.2	Compared Parameters	5
2.3	Aspect	6
2.4	Star Slots	9
2.4.1	Slot 3	9
2.4.2	Slot 4	10
2.4.3	Slot 5	11
2.4.4	Slot 6	12
2.4.5	Slot 7	13
2.5	FID Slots	14
2.5.1	Slot 0	14
2.5.2	Slot 1	15
2.5.3	Slot 2	16
A	Summary	17
A.1	Status	17
A.2	Comments	17

1 Front

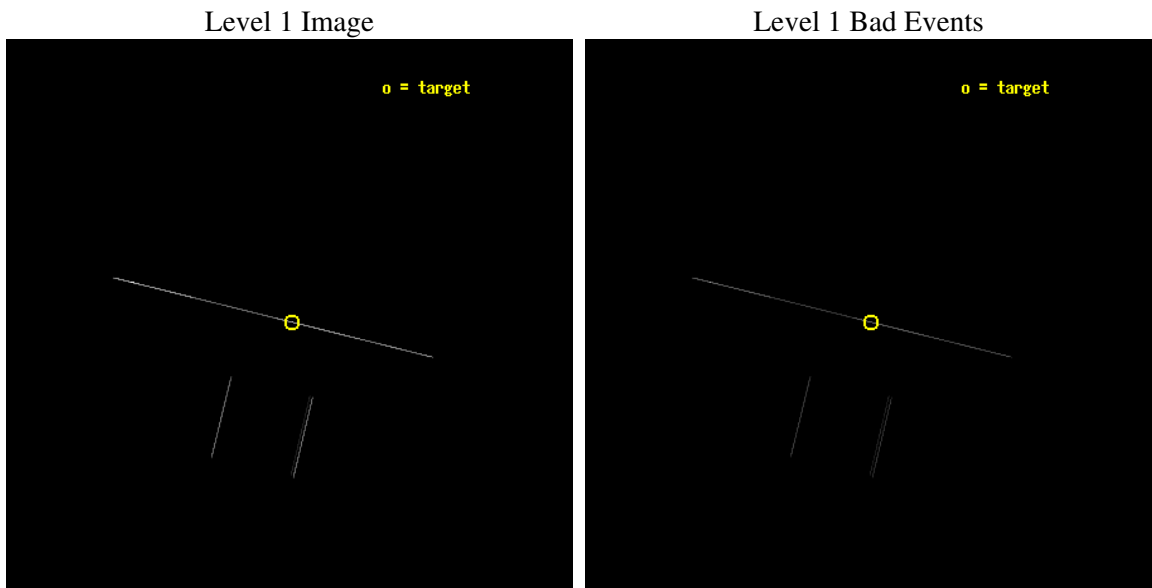
seq_num	300119
obs_id	4525
title	Timing the Orbit of RX J0806.3+1527
observer	Dr. Tod Strohmayer
object	RX J0806.3+1527
ra_targ	121.596667
dec_targ	15.458389
ra_nom	121.60105392851
dec_nom	15.457719220034
roll_nom	13.759812826137
revision	3
ontime	9751.5
livetime	9713.408203125
ontime2	9751.5
ontime3	9751.5
ontime5	9751.5
ontime6	9751.5
ontime7	9751.5
ontime8	9751.5
l2events	120202



2 OBI

2.1 OBI

2.1.1 Images



2.1.2 Parameters

obi_num	0
ascdsver	7.6.11.6
caldsver	3.4.4
date	2008-04-11T14:55:39
revision	3

sched_exp_time	9500.000000
ontime	9751.5
ontime2	9751.5
ontime3	9751.5
ontime5	9751.5
ontime6	9751.5
ontime7	9751.5
ontime8	9751.5
l1events	207566

2.1.3 Events

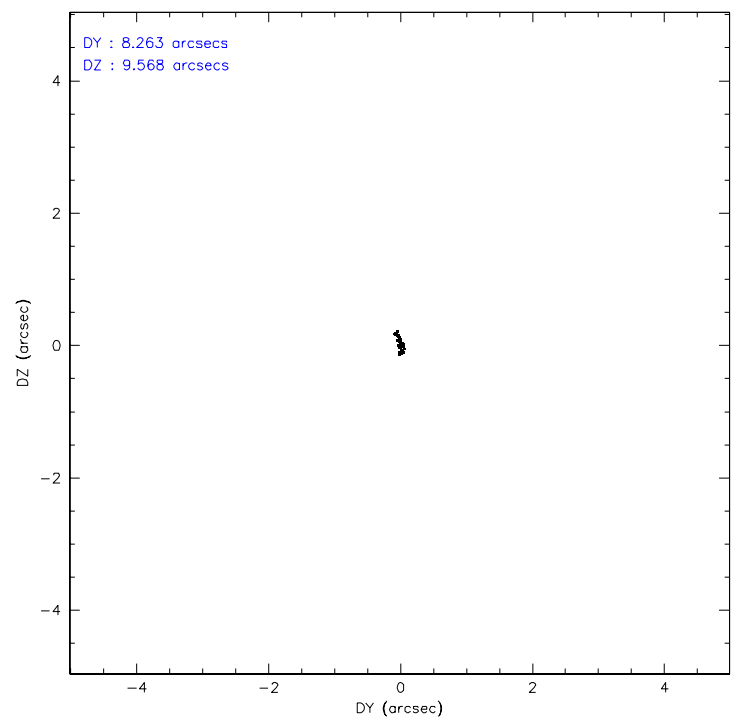
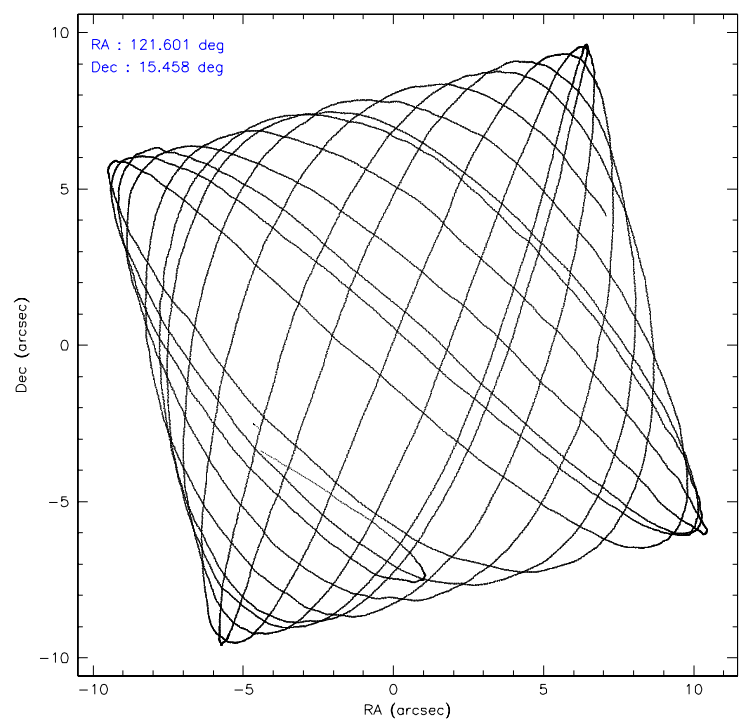
	ccd 2	ccd 3	ccd 5	ccd 6	ccd 7	ccd 8
level 1 events	14251	15802	84584	15730	47849	29350
rejected events	3305	3616	11329	3838	9620	5724
rejected %	23%	22%	13%	24%	20%	19%

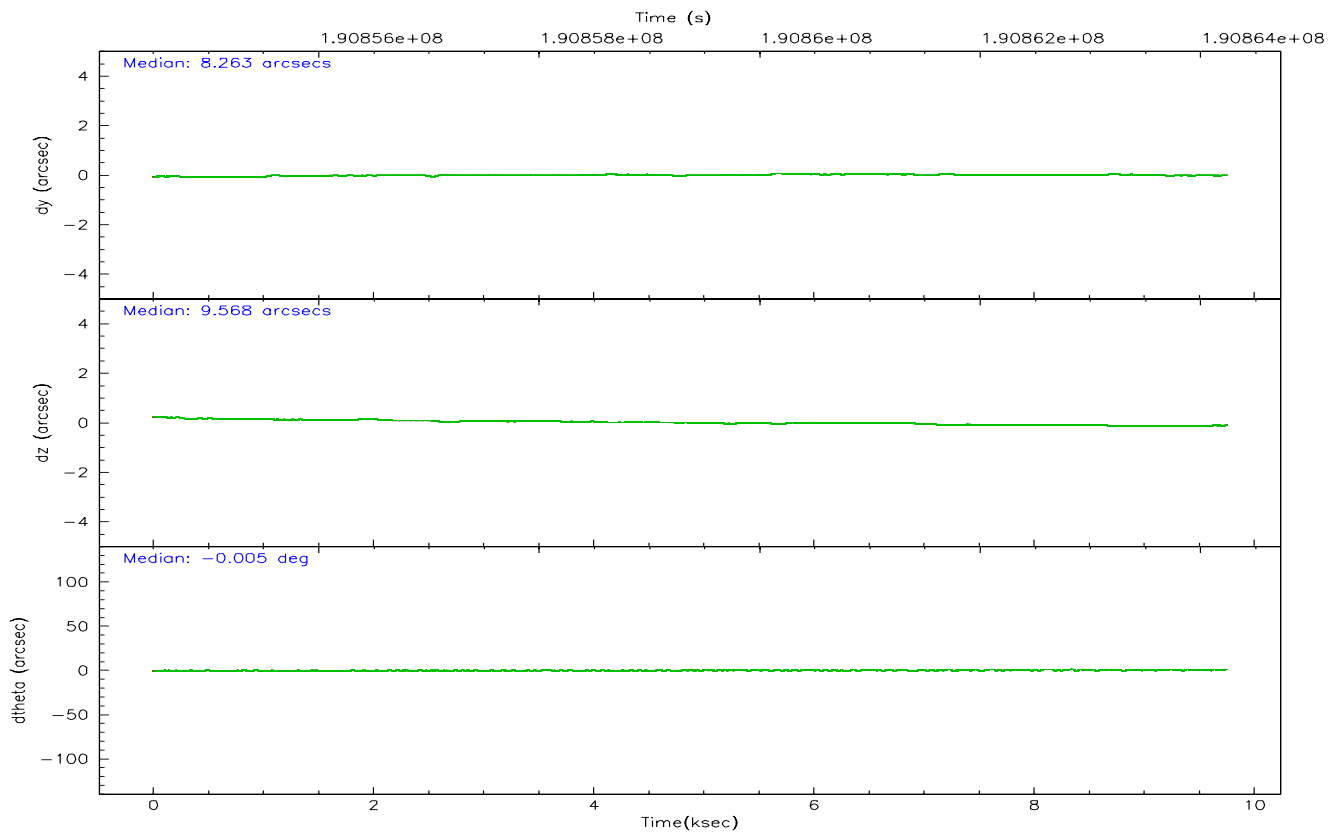
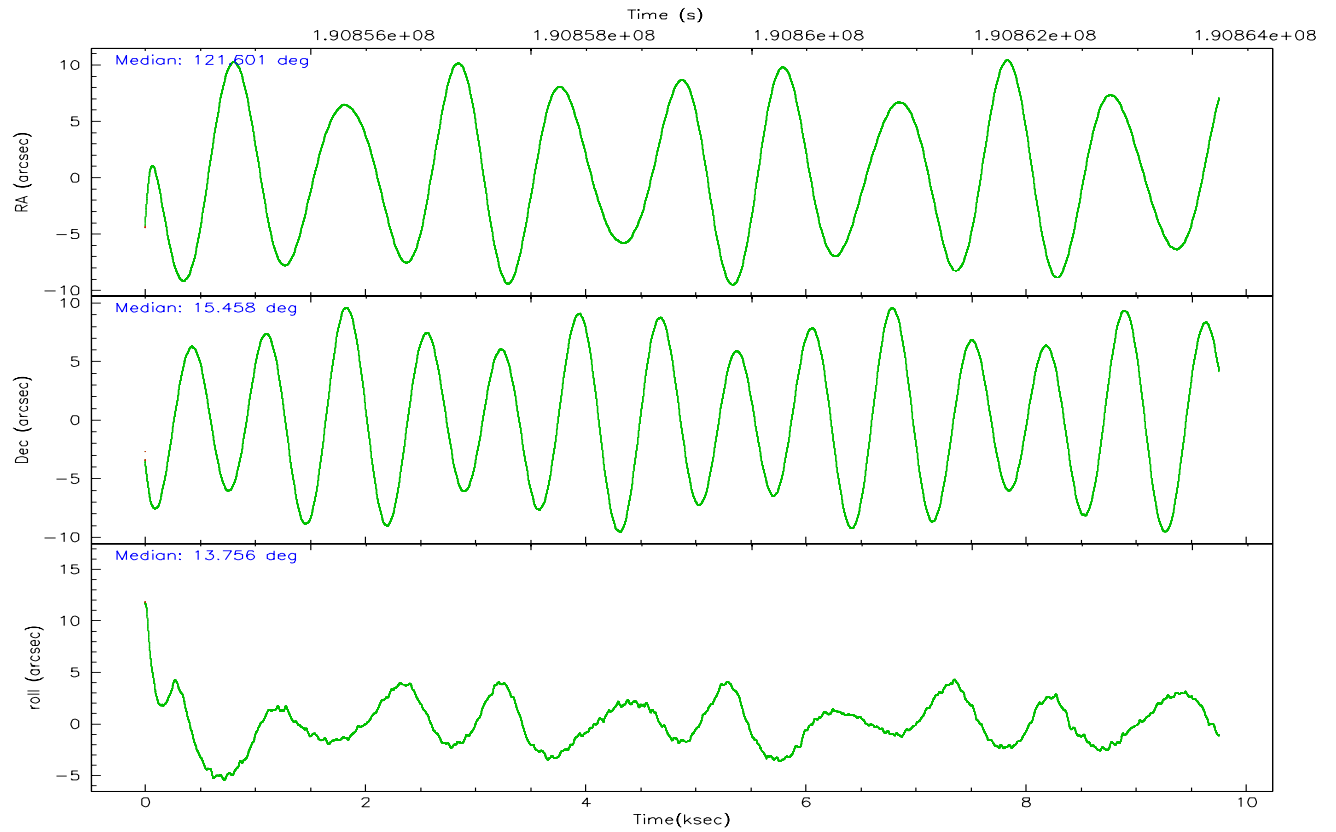
	ccd 2	ccd 3	ccd 5	ccd 6	ccd 7	ccd 8
grade 0 events	1473	1511	27263	1379	3823	4367
	10%	9%	32%	8%	7%	14%
grade 1 events	31	43	60	40	70	79
	0%	0%	0%	0%	0%	0%
grade 2 events	4924	5655	20101	5432	10514	8426
	34%	35%	23%	34%	21%	28%
grade 3 events	1342	1686	1026	1460	1728	2819
	9%	10%	1%	9%	3%	9%
grade 4 events	1429	1441	962	1391	1706	2764
	10%	9%	1%	8%	3%	9%
grade 5 events	2352	2510	5477	2825	6568	3760
	16%	15%	6%	17%	13%	12%
grade 6 events	2700	2956	29695	3203	23440	7135
	18%	18%	35%	20%	48%	24%
grade 7 events	0	0	0	0	0	0
	0%	0%	0%	0%	0%	0%

2.2 Compared Parameters

Parameter	Planned	Actual	Parameter	Planned	Actual
Instrument	ACIS	ACIS	Obspar format version number	6	6
Detector	ACIS-235678	ACIS-235678	Obspar file type	PREDICTED	ACTUAL
Grating	NONE	NONE	Obspar update status	NONE	UPDATED
Data mode	CC33_GRADED	CC33_GRADED	On-chip summing requested	N	N
Observation mode	POINTING	POINTING	Subarray requested	NONE	NONE
Pointing RA	121.580994	121.6010539285078	Alternating exposures requested	N	N
Pointing Dec	15.438616	15.45771922003361	Primary exposure time	0.000000	0
Pointing Roll	13.608515	13.7598128261366			
SIM focus pos (mm)	-0.684267	-0.6828225247311905			
SIM defocus (mm)	0	0.001444936568705701			
SIM translation stage pos (mm)	-190.132523	-190.1425803651734			
SIM translation stage offset (mm)	0	0.01005778216563158			
Observation start time	190854749.184000	190853748.51551			
Observation start date	2004-01-18T23:11:25	2004-01-18T22:55:48			
Observation end time	190864249.184000	190864949.716			
Observation end date	2004-01-19T01:49:45	2004-01-19T02:02:29			
Read mode	CONTINUOUS	CONTINUOUS			

2.3 Aspect



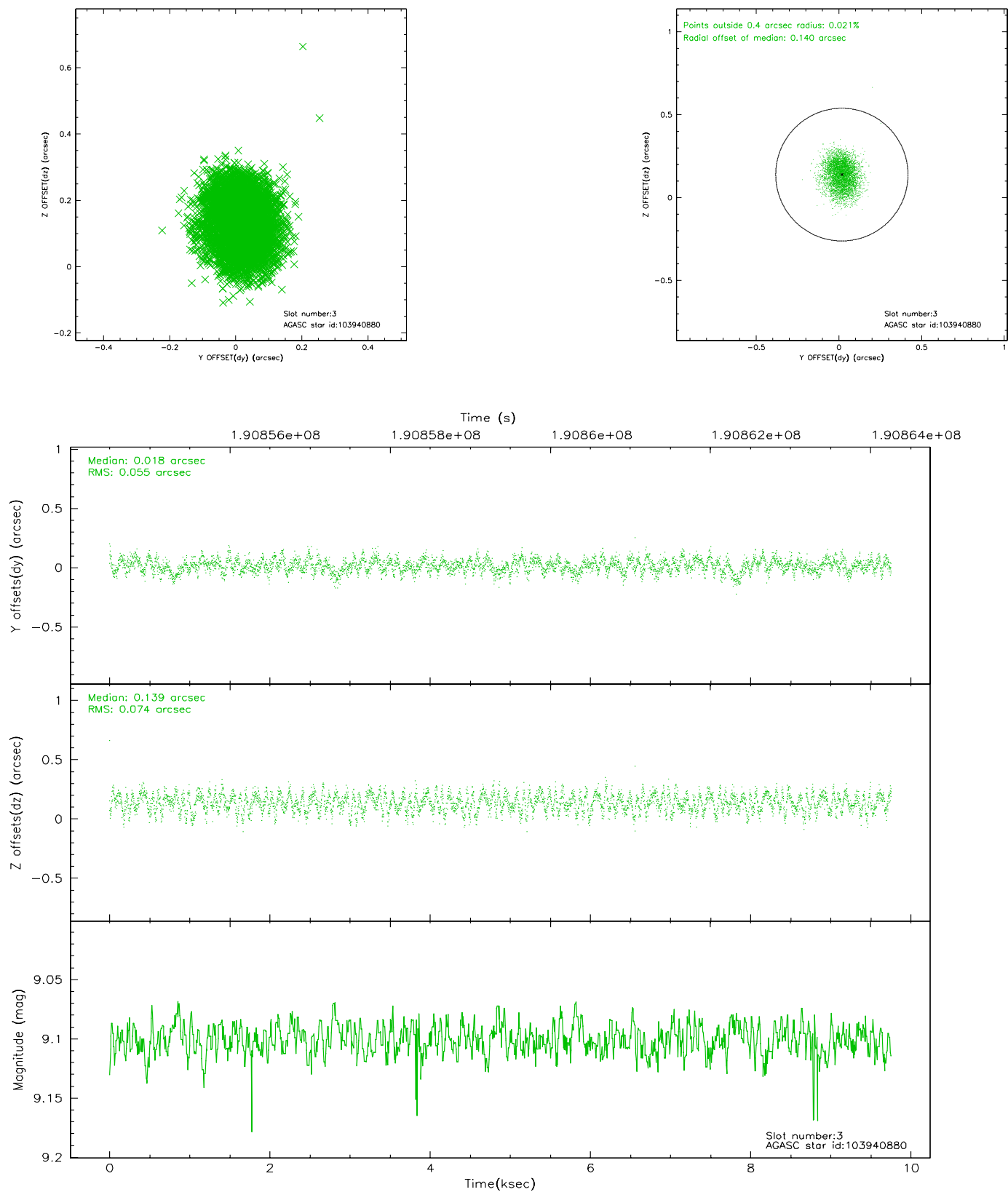


Slot Statistics

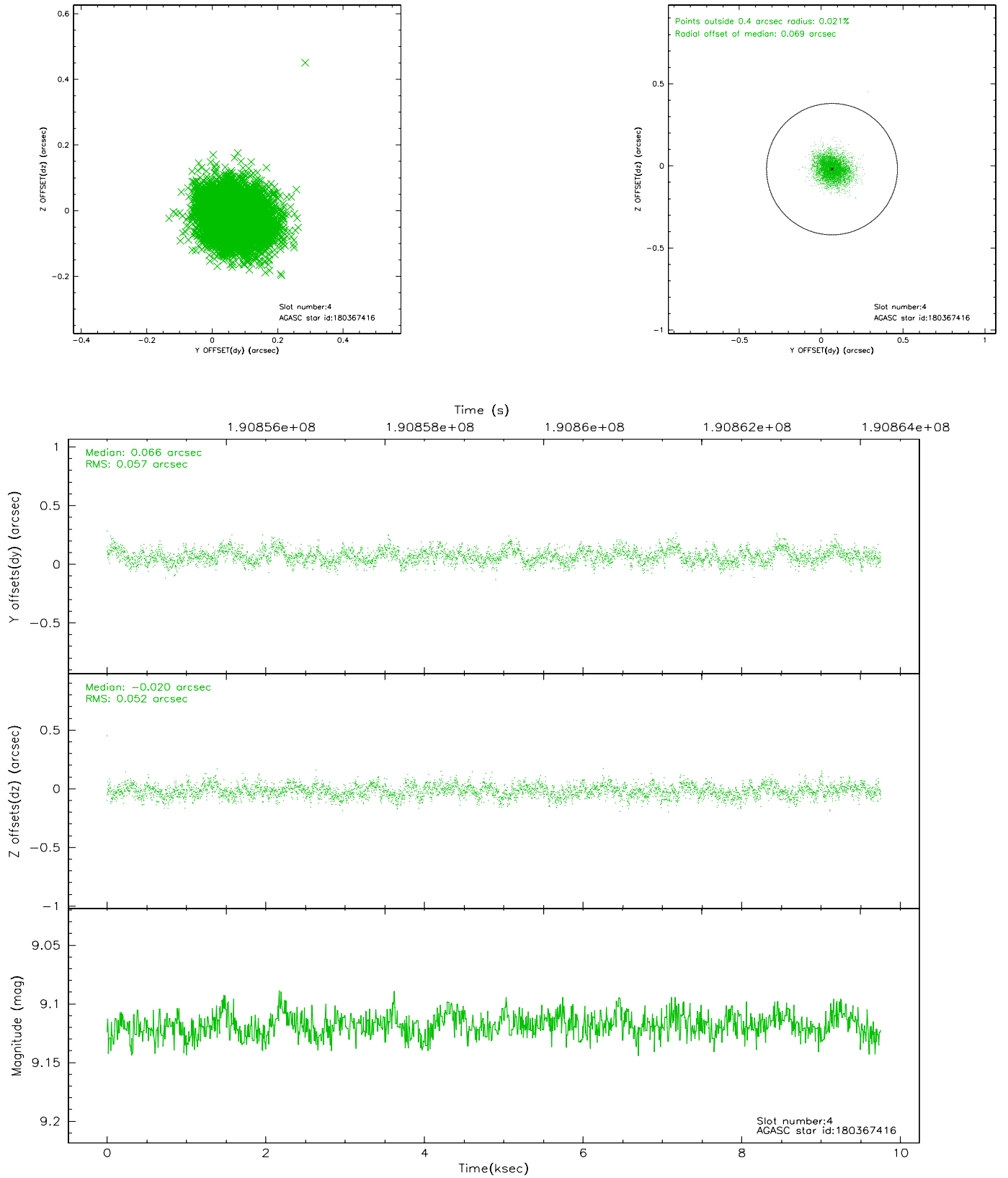
slot	status	id	mag	n_pts	med_dy	med_dz	dr1	dr2	ra	dec	mean_y	mean_z
0	FID	ACIS-S-2	7.10	2380	-0.011	0.002	0.007	0.012	0.000000	0.000000	-761.03	-1730.78
1	FID	ACIS-S-4	7.21	2380	0.043	0.005	0.005	0.009	0.000000	0.000000	2152.02	177.19
2	FID	ACIS-S-5	7.23	2380	-0.063	0.002	0.007	0.012	0.000000	0.000000	-1813.25	171.42
3	GUIDE	103940880	9.10	4756	0.018	0.139	0.099	0.156	121.309737	14.754895	-1496.27	-2169.42
4	GUIDE	180367416	9.12	4756	0.066	-0.020	0.082	0.133	120.920648	15.525818	-2151.33	847.03
5	GUIDE	180370112	8.37	4760	-0.065	-0.096	0.063	0.100	121.144488	15.364256	-1536.27	97.18
6	GUIDE	180372496	7.92	4760	0.012	0.015	0.062	0.100	121.745221	15.155380	315.10	-1124.96
7	GUIDE	180359160	9.57	4757	-0.032	-0.041	0.121	0.205	121.837257	16.020694	1355.44	1828.57

2.4 Star Slots

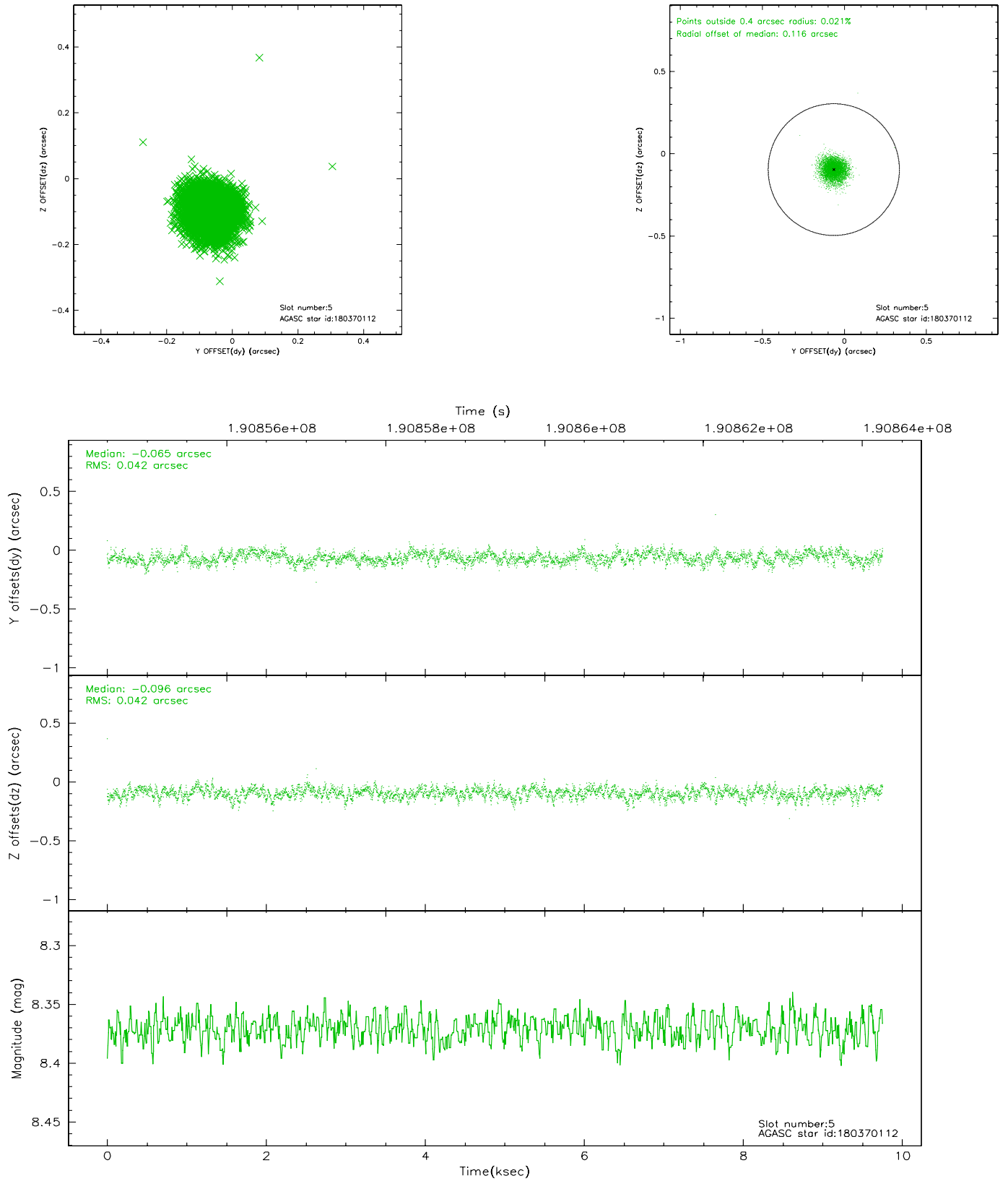
2.4.1 Slot 3



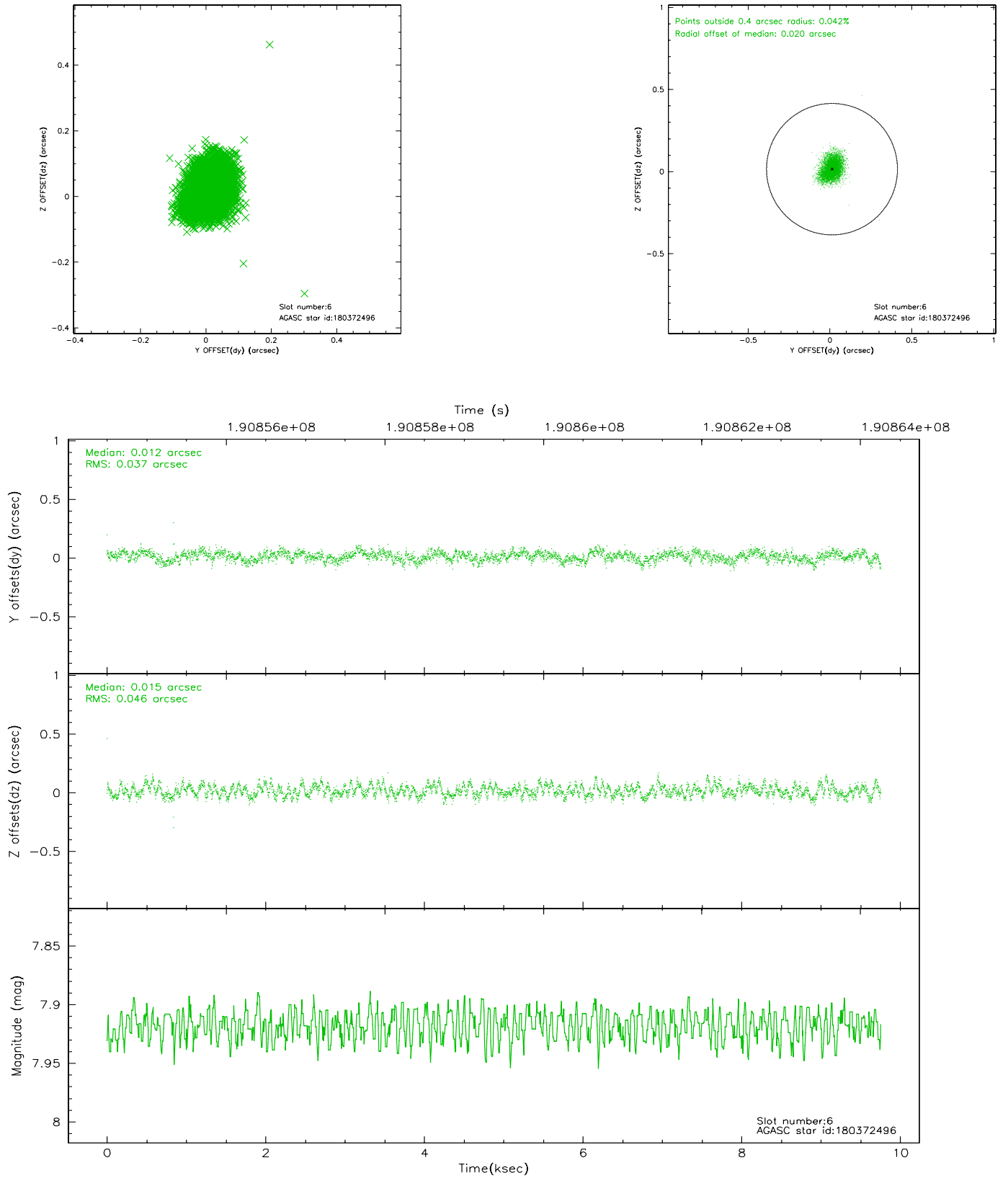
2.4.2 Slot 4



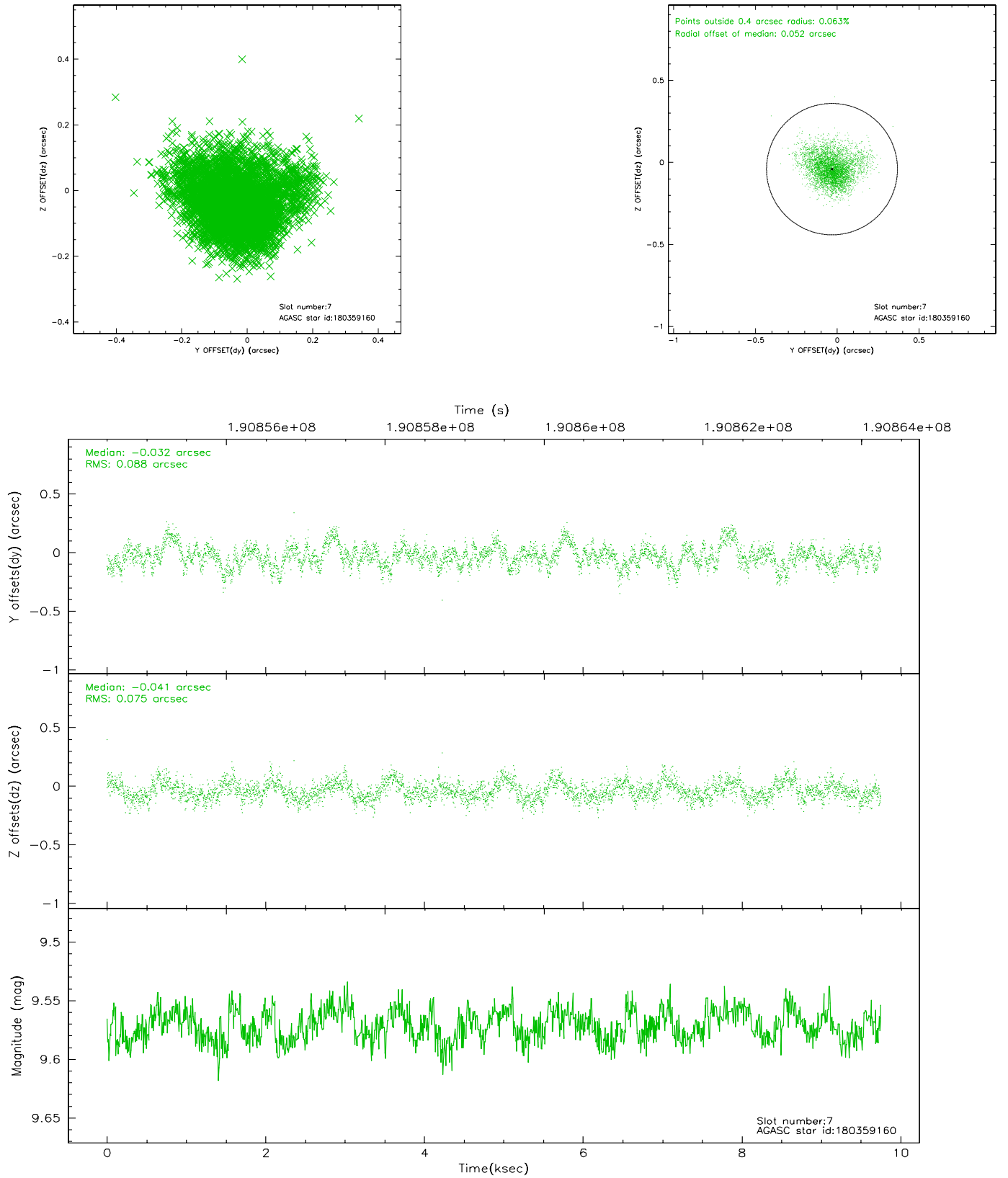
2.4.3 Slot 5



2.4.4 Slot 6

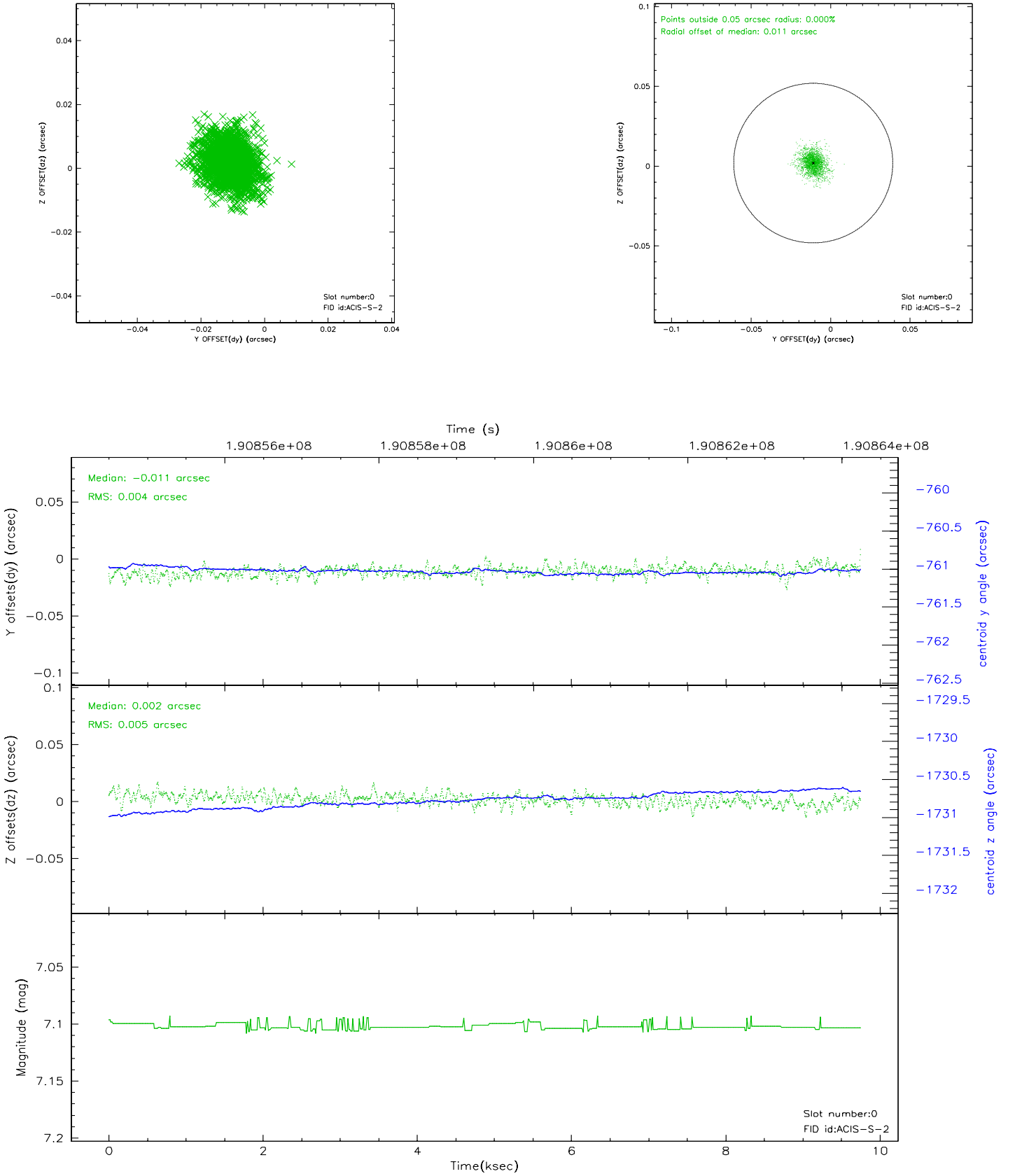


2.4.5 Slot 7

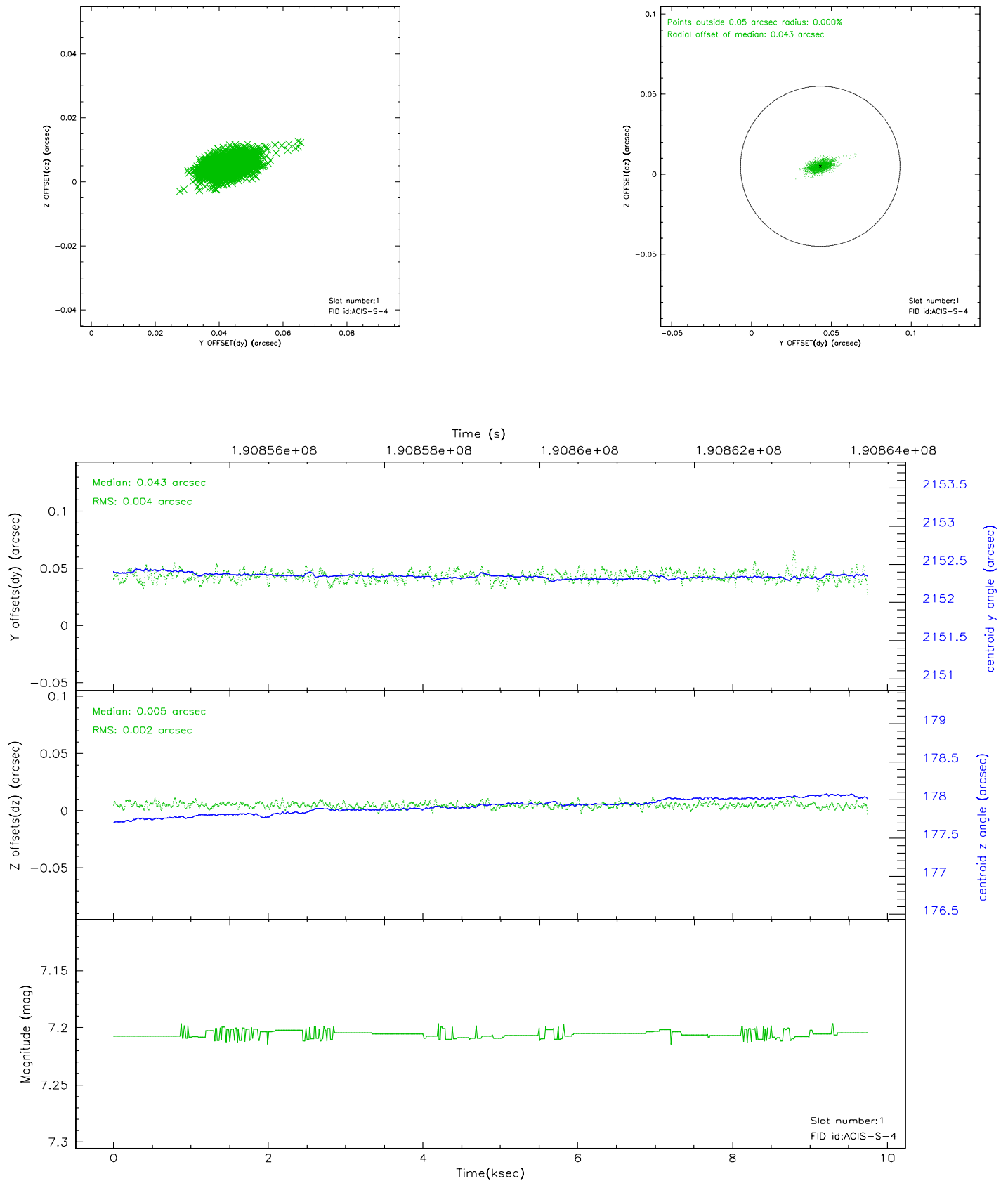


2.5 FID Slots

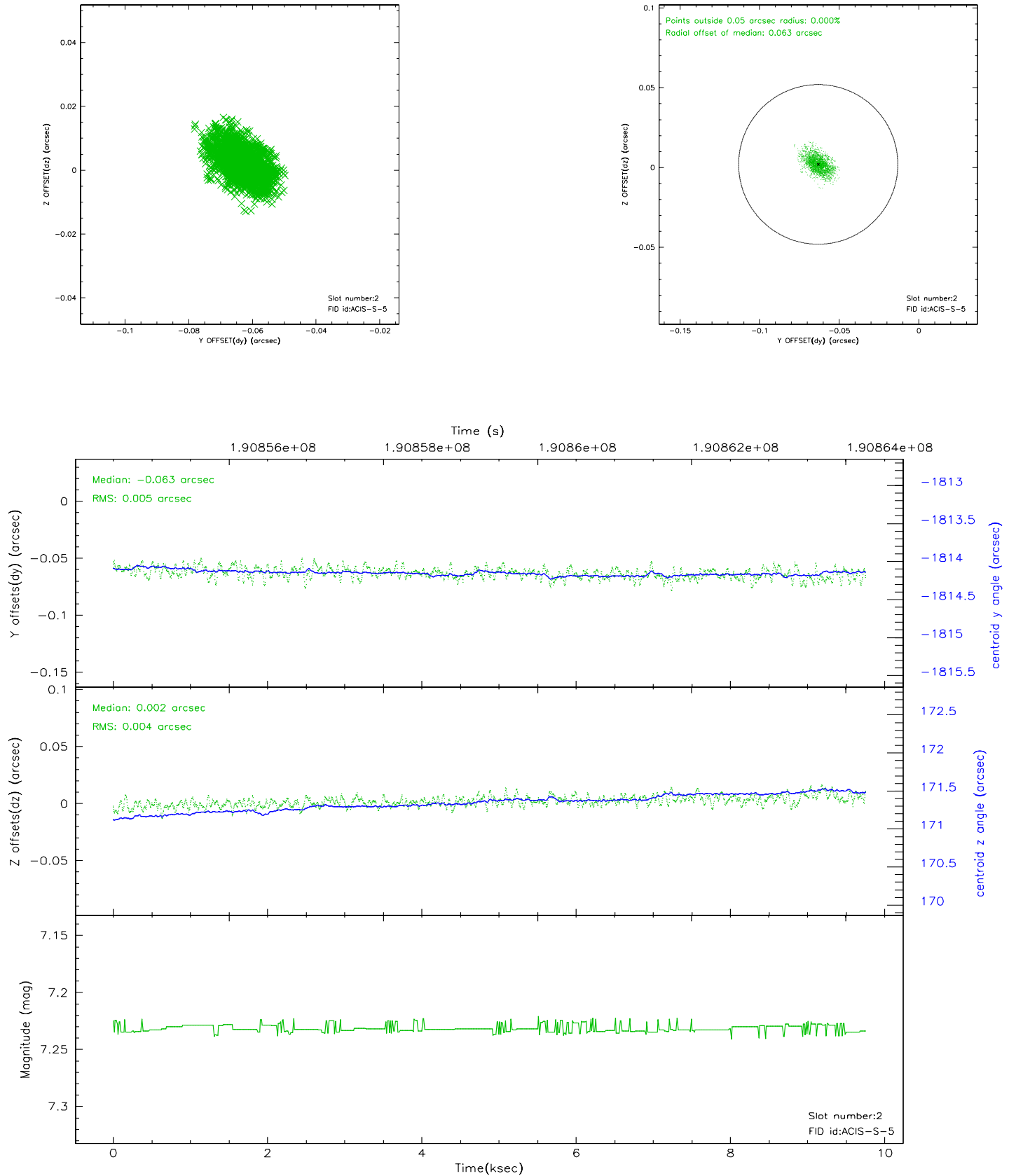
2.5.1 Slot 0



2.5.2 Slot 1



2.5.3 Slot 2



A Summary

A.1 Status

V&V Scientist	Beth Sundheim
V&V Date (YYYY-MM-DD)	2008.04.14
V&V Edition	1
V&V Disposition and Status	OK
V&V Charge Time	9.755

A.2 Comments