

V&V Reference Report

L2 ASCDS Version : 7.6.8

Observation 4445 - L2 Version 001
Chandra X-Ray Center

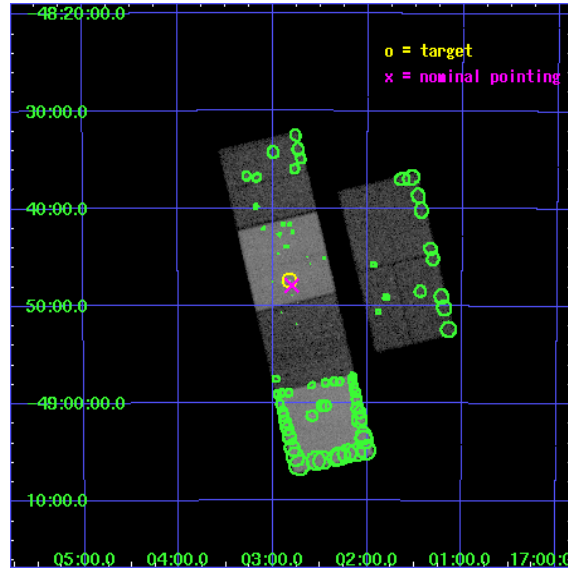
L2 Processing Date : Jul 3 2006

Contents

1	Front	2
2	OBI	3
2.1	OBI	3
2.1.1	Images	3
2.1.2	Bias	3
2.1.3	Parameters	4
2.1.4	Events	4
2.2	Compared Parameters	5
2.3	Aspect	6
2.4	Star Slots	9
2.4.1	Slot 3	9
2.4.2	Slot 4	10
2.4.3	Slot 5	11
2.4.4	Slot 6	12
2.4.5	Slot 7	13
2.5	FID Slots	14
2.5.1	Slot 0	14
2.5.2	Slot 1	15
2.5.3	Slot 2	16
3	Point Sources	17
A	Summary	18
A.1	Status	18
A.2	Comments	18

1 Front

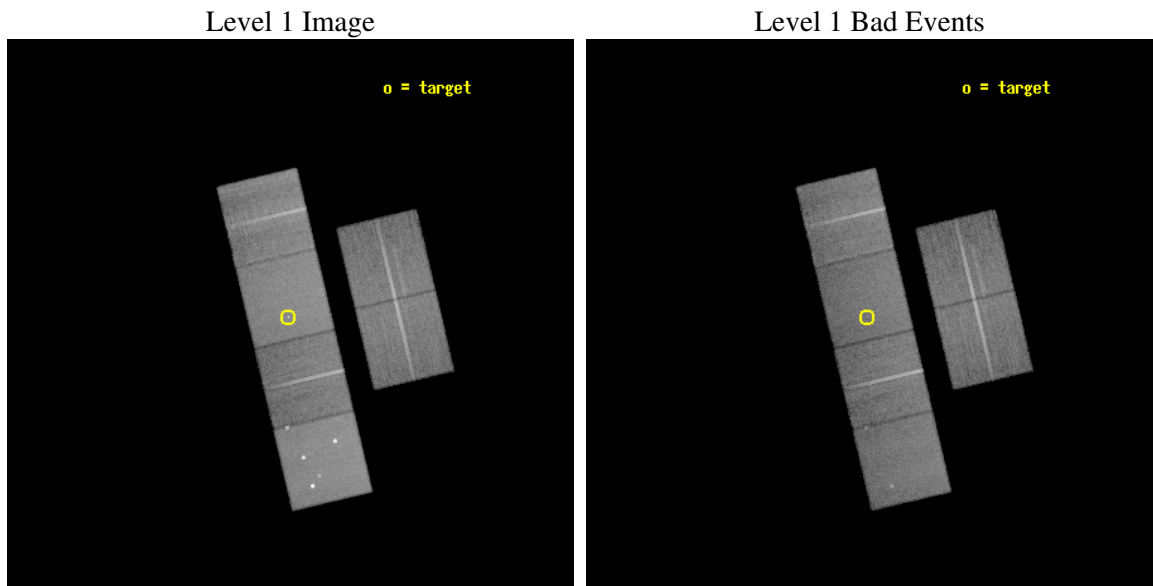
seq_num	400325
obs_id	4445
title	The large-scale relativistic jet and low-luminosity spectrum of GX 339-4
observer	Prof. Rob Fender
object	GX 339-4
dtcycle	0
cycle	P
ra_targ	255.705833
dec_targ	-48.789806
ra_nom	255.70000338638
dec_nom	-48.798665908124
roll_nom	256.63431811362
revision	2
ontime	28665.599893212
livetime	28302.618807012
ontime2	28665.599893212
ontime3	28665.599893212
ontime5	28665.599893212
ontime6	28665.599893212
ontime7	28665.599893212
ontime8	28665.599893212
l2events	296218



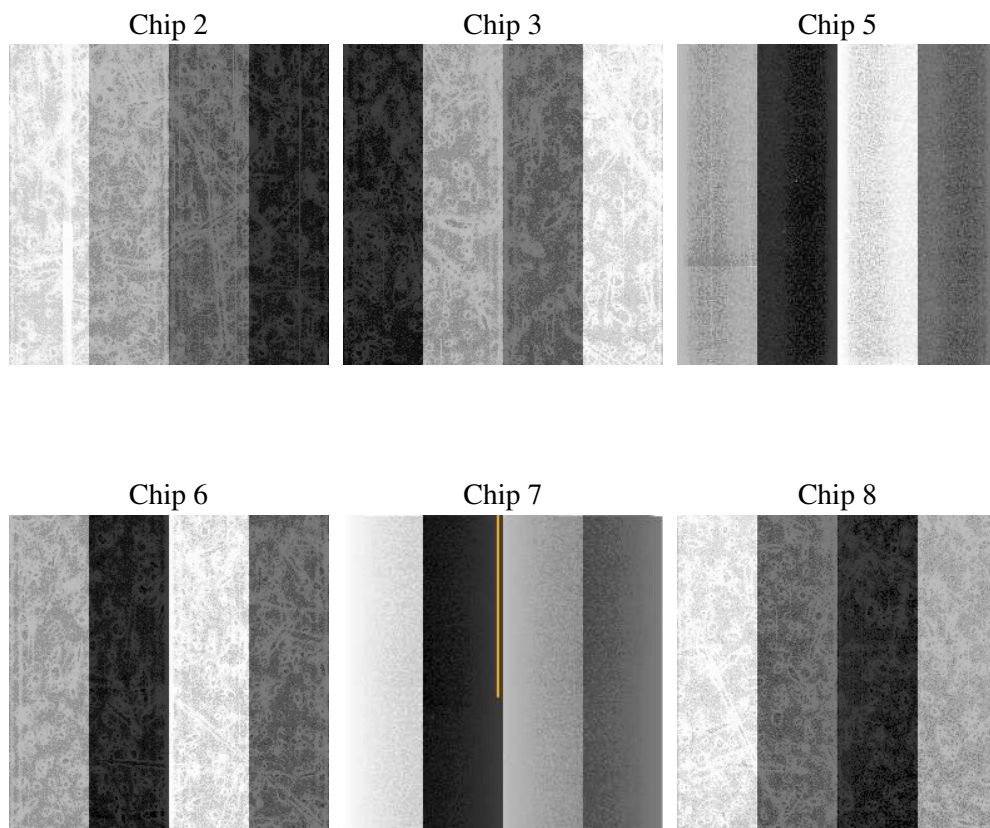
2 OBI

2.1 OBI

2.1.1 Images



2.1.2 Bias



2.1.3 Parameters

obi_num	0
ascdsver	7.6.8
caldsver	3.2.2
date	2006-07-03T02:47:37
revision	2

sched_exp_time	28706.000000
ontime	28669.896600902
ontime2	28669.896600902
ontime3	28669.896600902
ontime5	28669.89662081
ontime6	28669.896600902
ontime7	28669.896600902
ontime8	28669.896600902
l1events	1350181

2.1.4 Events

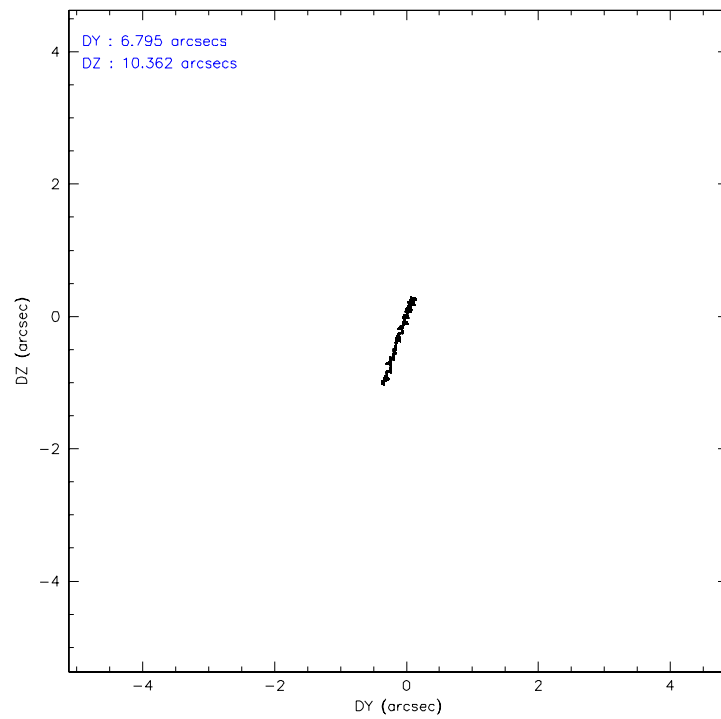
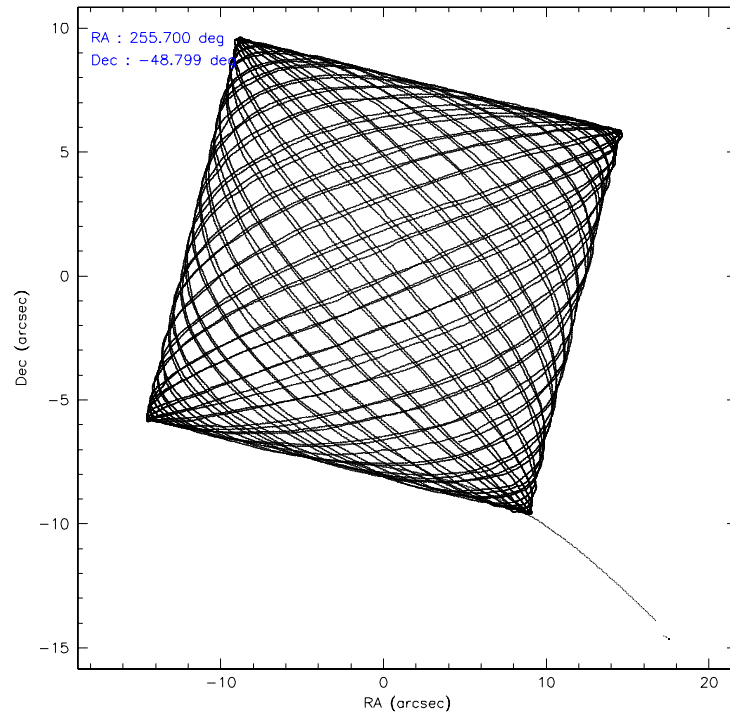
	ccd 2	ccd 3	ccd 5	ccd 6	ccd 7	ccd 8
level 1 events	193650	184244	293818	187003	254370	237096
rejected events	170459	161918	155664	163691	155333	186642
rejected %	88%	87%	52%	87%	61%	78%

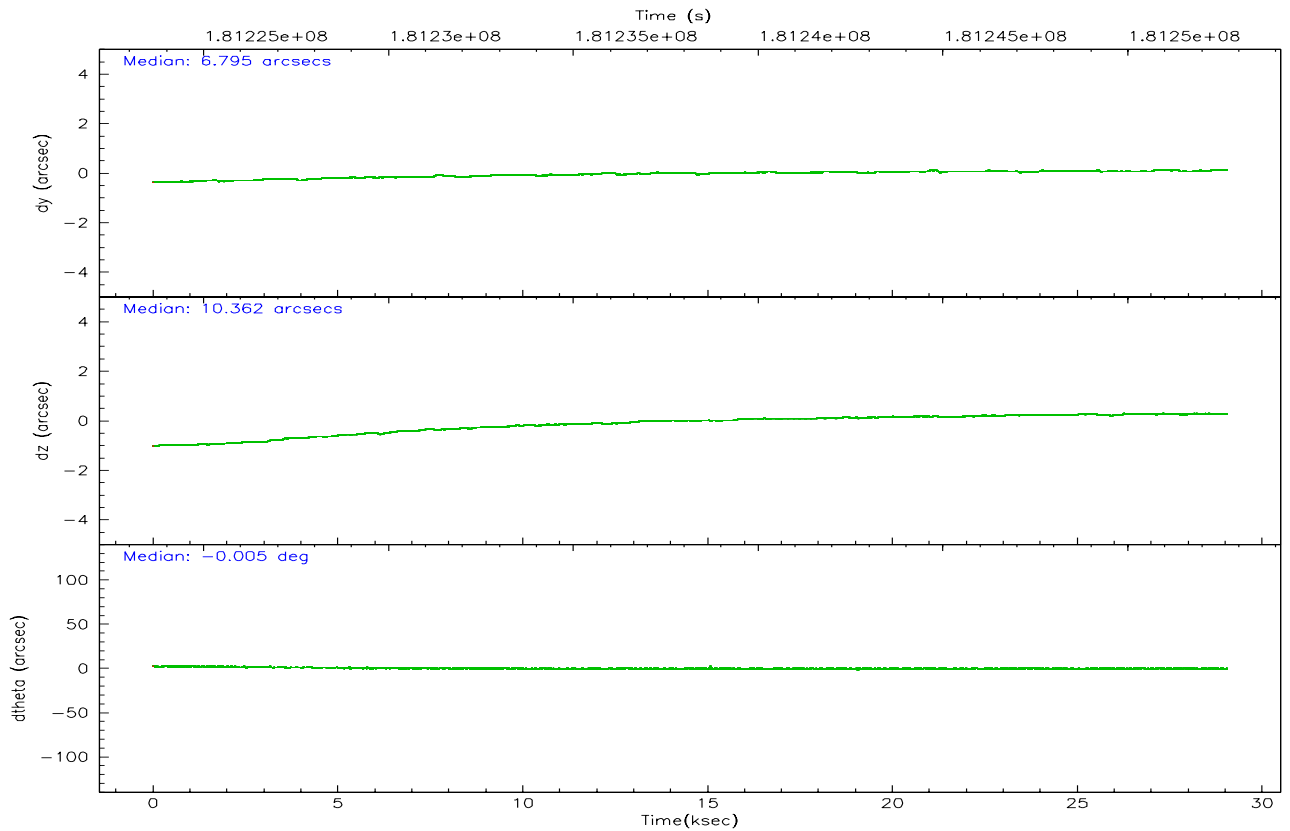
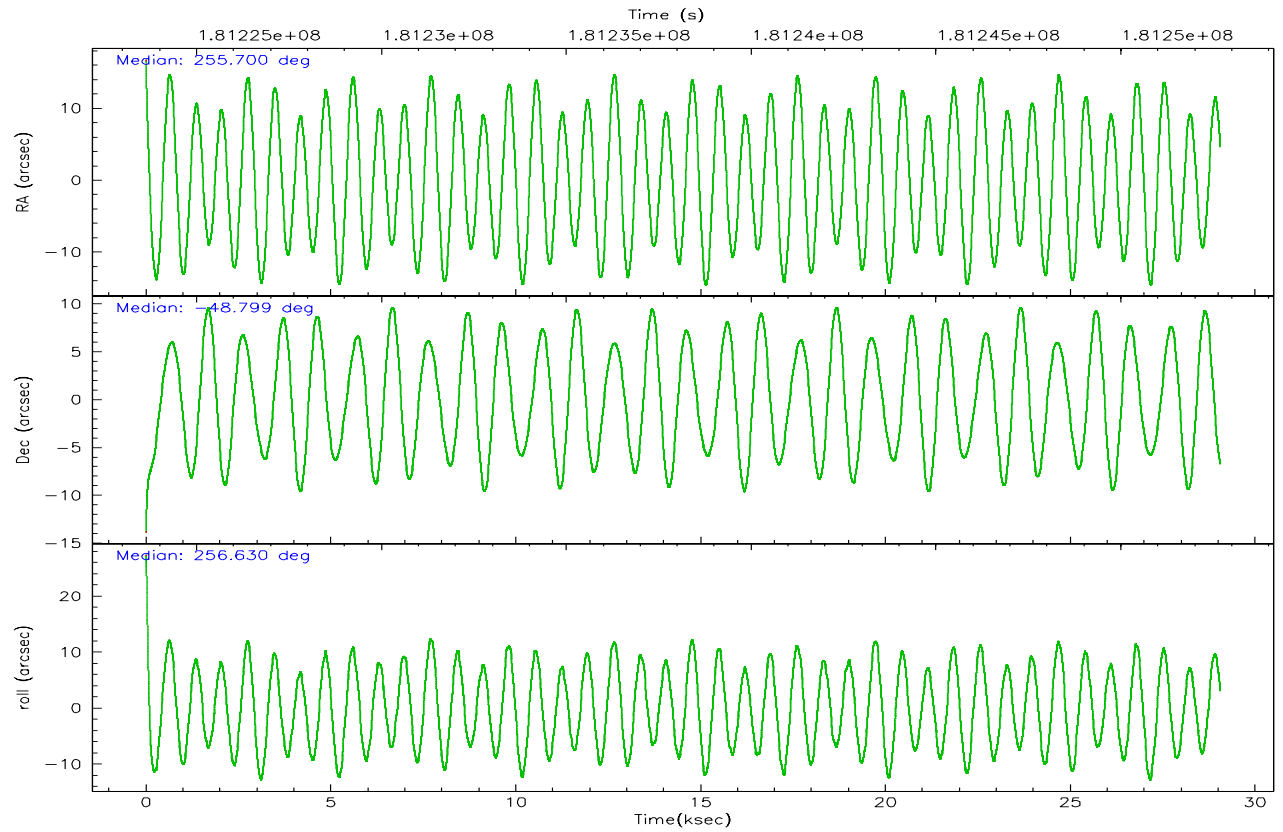
	ccd 2	ccd 3	ccd 5	ccd 6	ccd 7	ccd 8
grade 0 events	10745	10014	21458	9770	6432	17075
	5%	5%	7%	5%	2%	7%
grade 1 events	115	121	943	85	152	162
	0%	0%	0%	0%	0%	0%
grade 2 events	4554	4167	41191	4583	24728	10576
	2%	2%	14%	2%	9%	4%
grade 3 events	2132	2175	2900	2237	5208	5455
	1%	1%	0%	1%	2%	2%
grade 4 events	2157	2183	2858	2197	5198	4976
	1%	1%	0%	1%	2%	2%
grade 5 events	7220	8159	13250	8531	16600	10997
	3%	4%	4%	4%	6%	4%
grade 6 events	3605	3790	69785	4529	57491	12377
	1%	2%	23%	2%	22%	5%
grade 7 events	163122	153635	141433	155071	138561	175478
	84%	83%	48%	82%	54%	74%

2.2 Compared Parameters

Parameter	Planned	Actual	Parameter	Planned	Actual
Instrument	ACIS	ACIS	Obspar format version number	6	6
Detector	ACIS-235678	ACIS-235678	Obspar file type	PREDICTED	ACTUAL
Grating	NONE	NONE	Obspar update status	NONE	UPDATED
Data mode	FAINT	FAINT	On-chip summing requested	N	N
Observation mode	POINTING	POINTING	Subarray requested	NONE	NONE
Pointing RA	255.687634	255.700003386376	Alternating exposures requested	N	N
Pointing Dec	-48.772698	-48.79866590812419	Primary exposure time	0.000000	3.2
Pointing Roll	256.468373	256.6343181136167			
SIM focus pos (mm)	-0.684267	-0.6828225247311905			
SIM defocus (mm)	0	0.001444936568705701			
SIM translation stage pos (mm)	-190.132523	-190.1400660498719			
SIM translation stage offset (mm)	0	0.00754346686406393			
Observation start time	181223983.184000	181222933.17352			
Observation start date	2003-09-29T11:58:39	2003-09-29T11:42:13			
Observation end time	181252689.184000	181254319.18737			
Observation end date	2003-09-29T19:57:05	2003-09-29T20:25:19			
Read mode	TIMED	TIMED			

2.3 Aspect



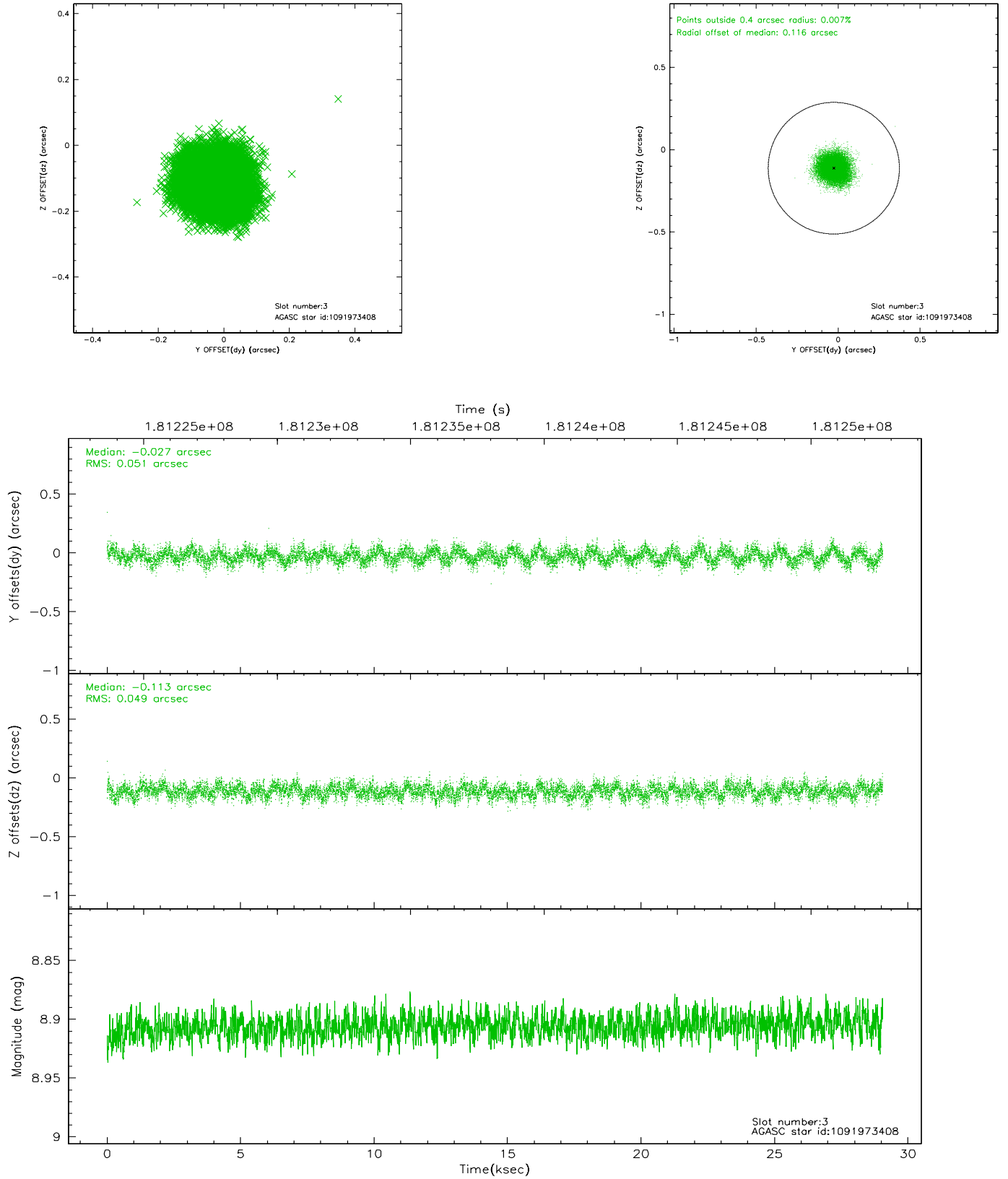


Slot Statistics

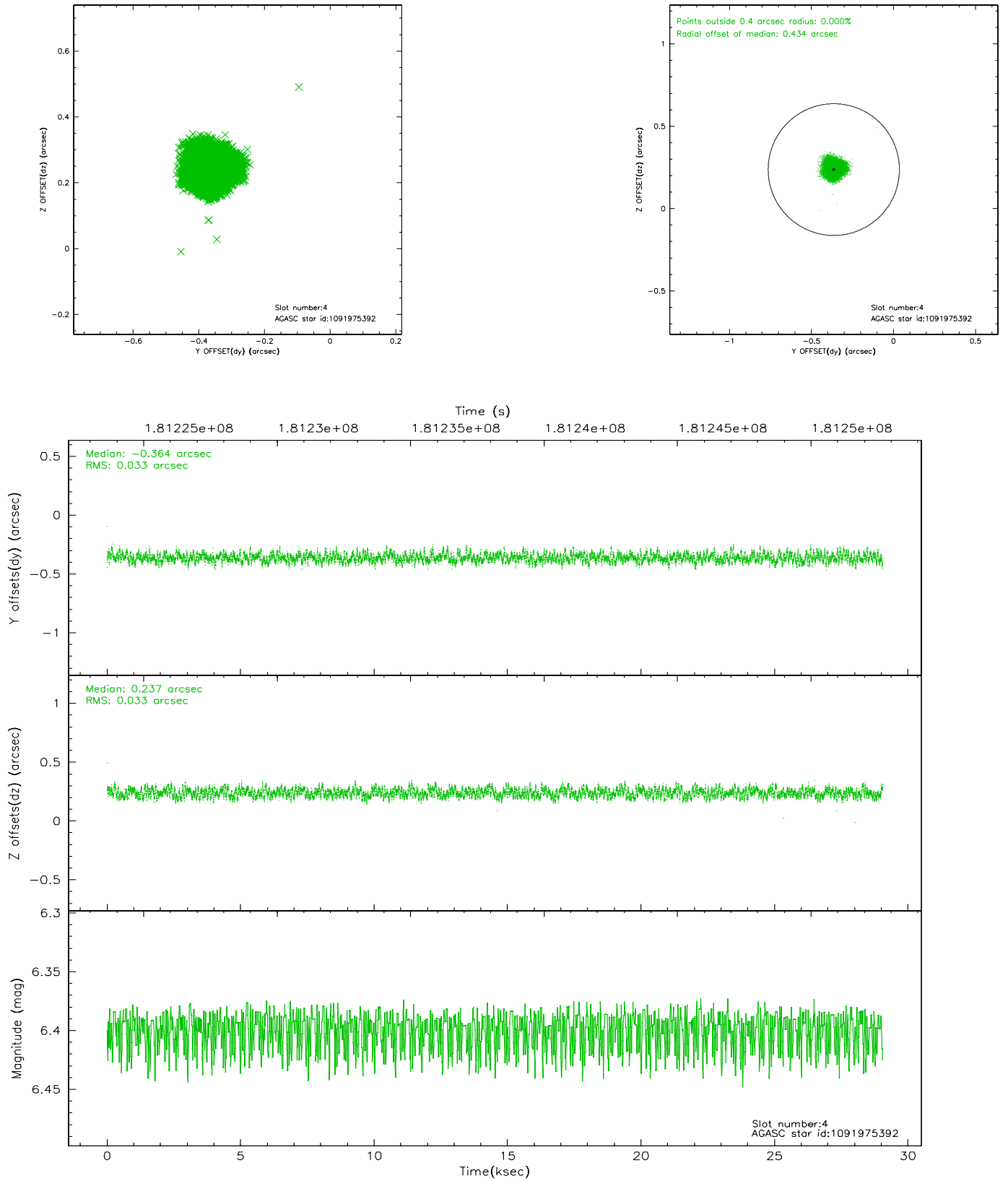
slot	status	id	mag	n_pts	med_dy	med_dz	dr1	dr2	ra	dec	mean_y	mean_z
0	FID	ACIS-S-2	7.10	7088	-0.047	0.003	0.008	0.014	0.000000	0.000000	-759.51	-1731.49
1	FID	ACIS-S-4	7.20	7088	0.033	0.022	0.005	0.010	0.000000	0.000000	2153.78	176.98
2	FID	ACIS-S-5	7.23	7088	-0.018	-0.017	0.007	0.013	0.000000	0.000000	-1812.25	170.64
3	GUIDE	1091973408	8.91	14171	-0.027	-0.113	0.076	0.120	255.800233	-48.601800	-660.40	116.77
4	GUIDE	1091975392	6.40	14175	-0.364	0.237	0.051	0.078	255.805002	-48.336791	-1591.29	-93.70
5	GUIDE	1092111344	9.97	14163	-0.015	0.000	0.112	0.186	256.132869	-48.213784	-2202.98	568.43
6	GUIDE	1092485728	6.88	14175	0.110	0.068	0.069	0.103	254.773222	-48.875124	878.18	-2015.22
7	GUIDE	1092491384	9.13	14166	0.287	-0.196	0.077	0.123	254.923973	-49.184437	1871.15	-1398.11

2.4 Star Slots

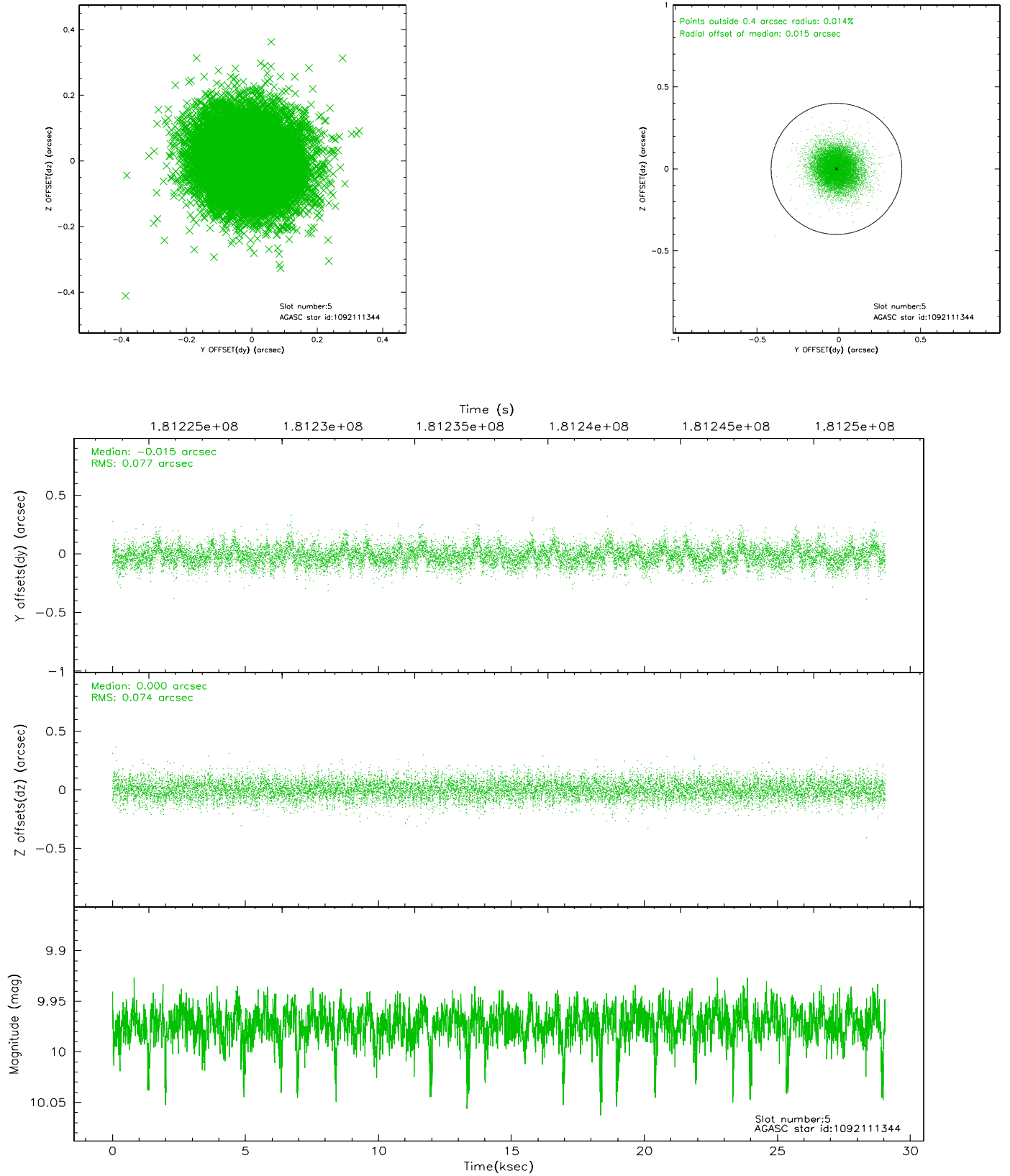
2.4.1 Slot 3



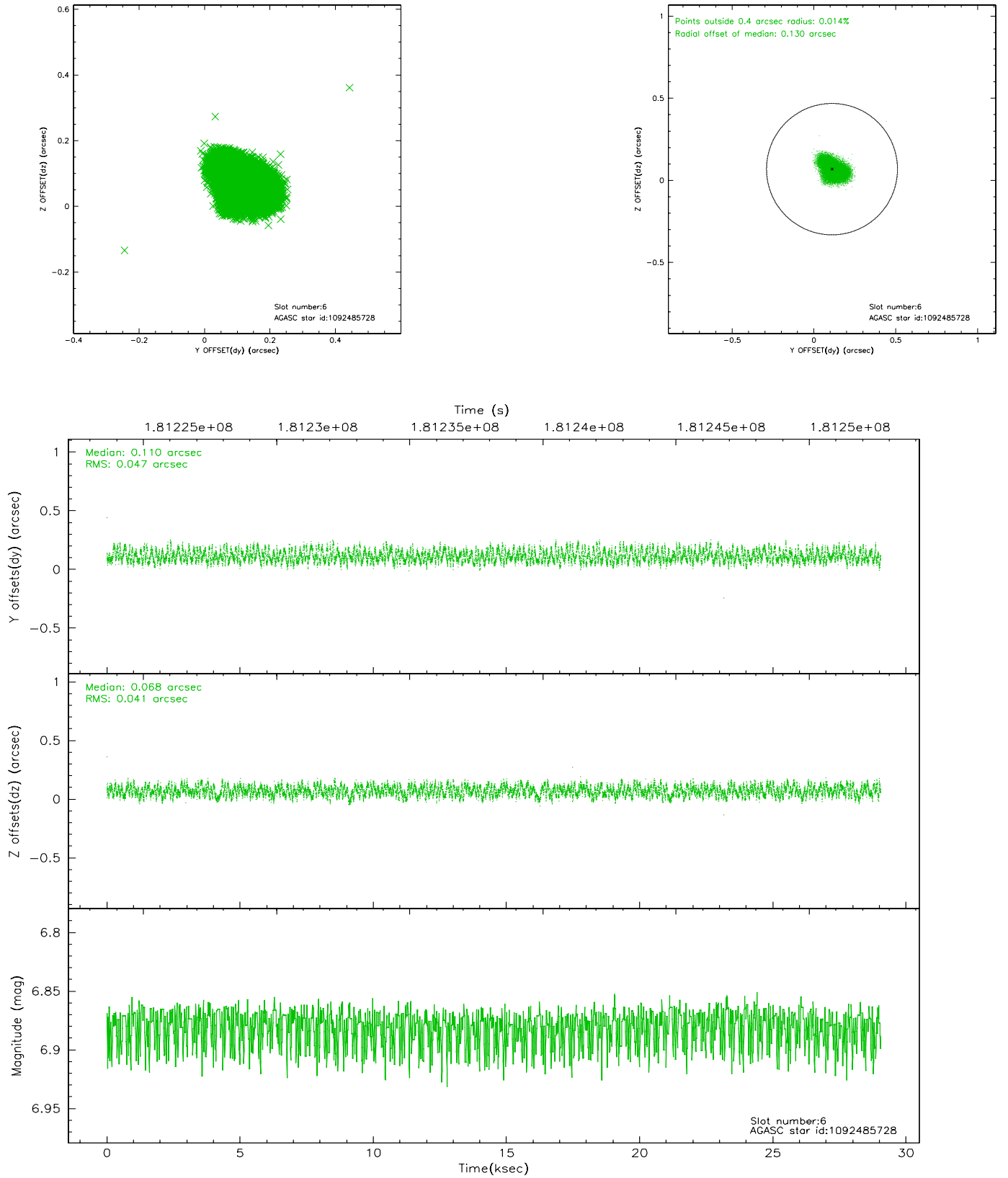
2.4.2 Slot 4



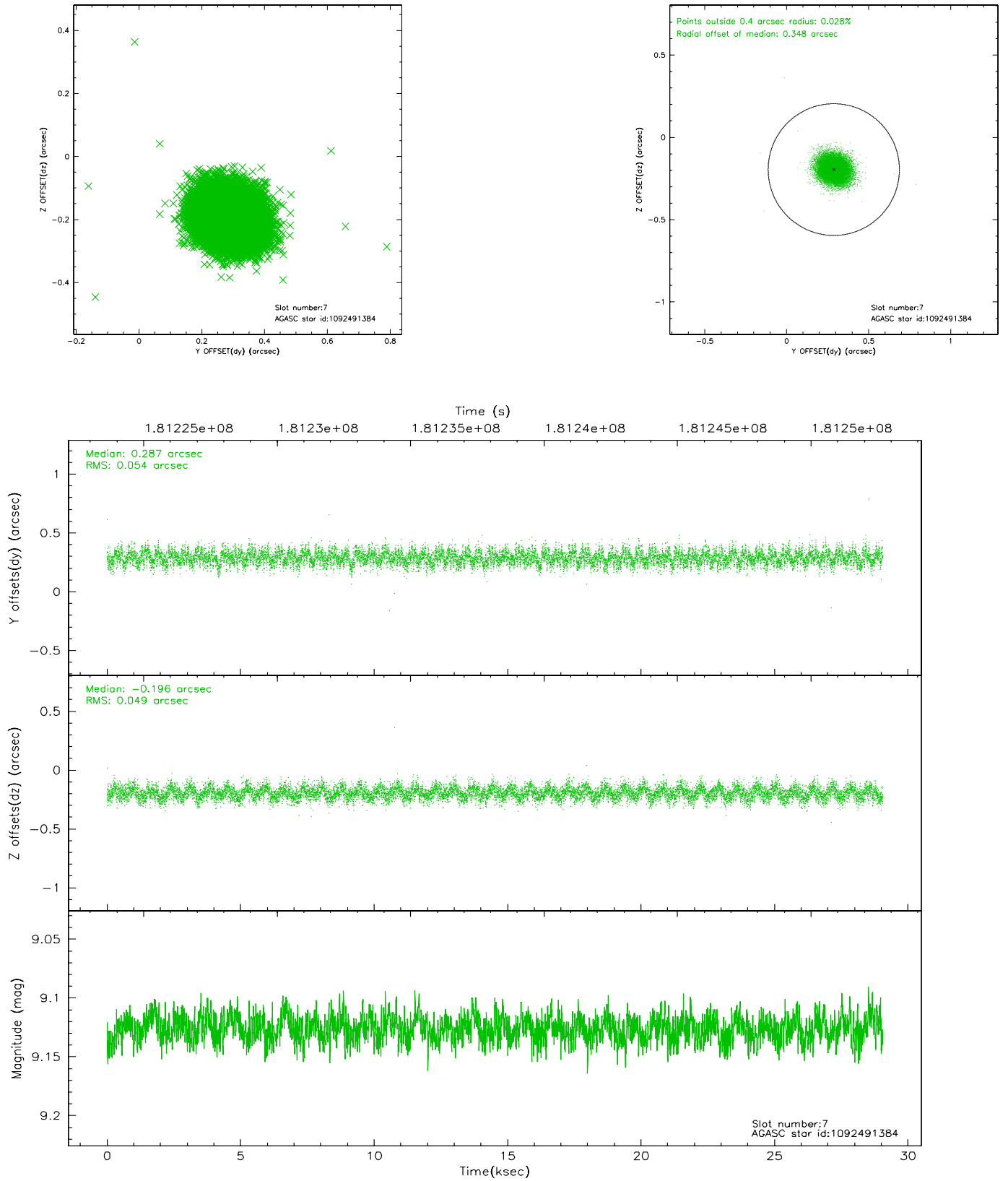
2.4.3 Slot 5



2.4.4 Slot 6

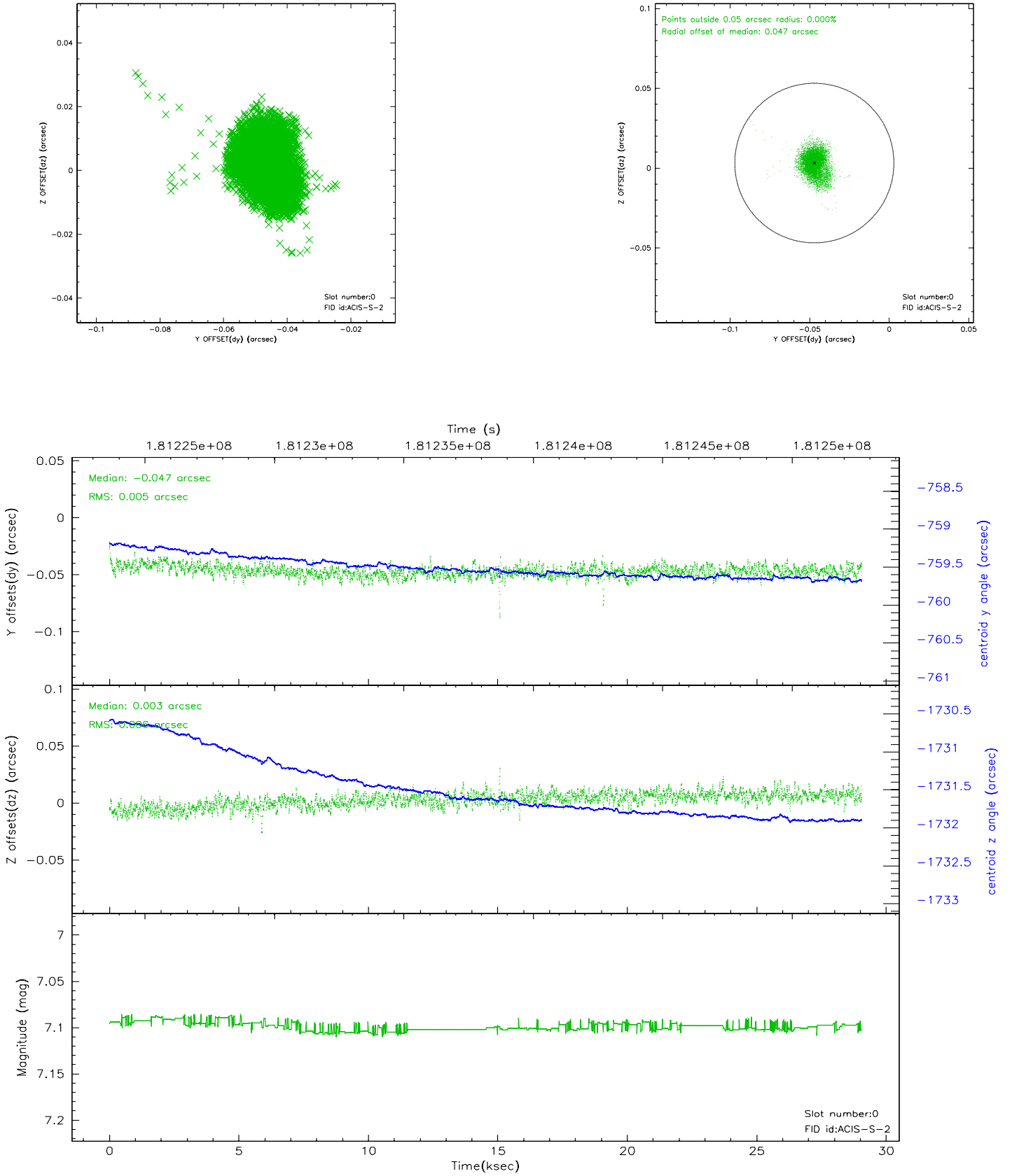


2.4.5 Slot 7

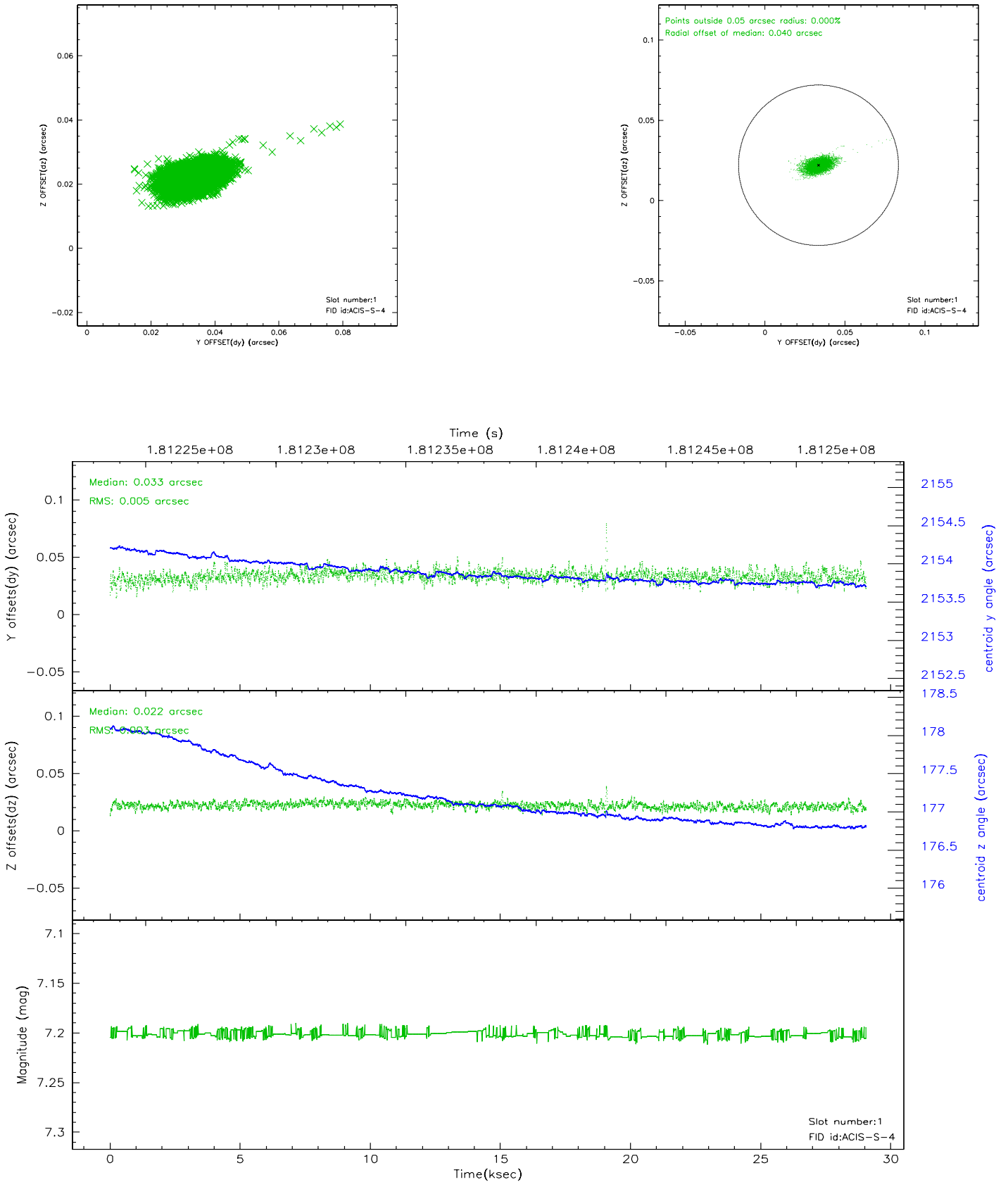


2.5 FID Slots

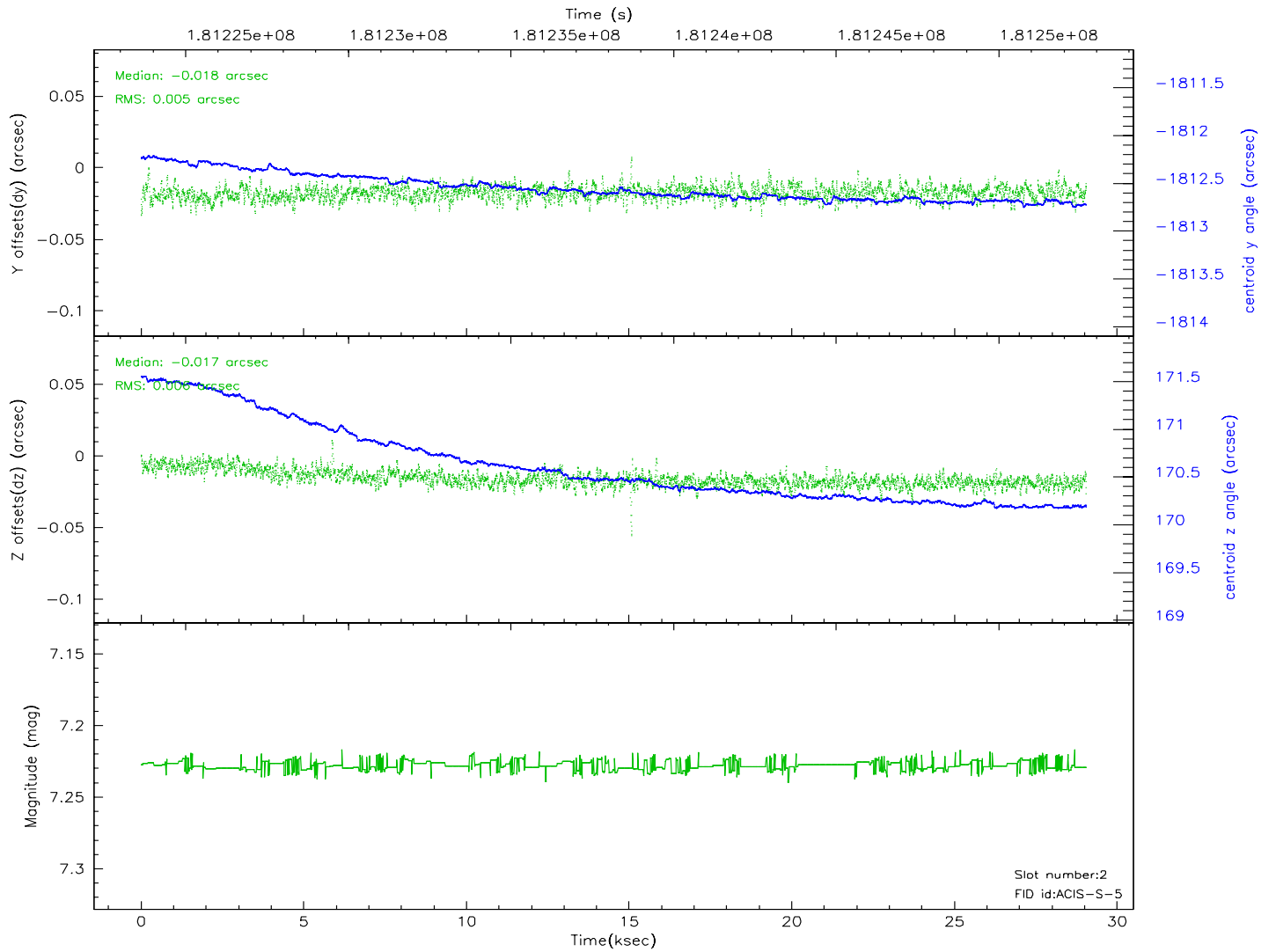
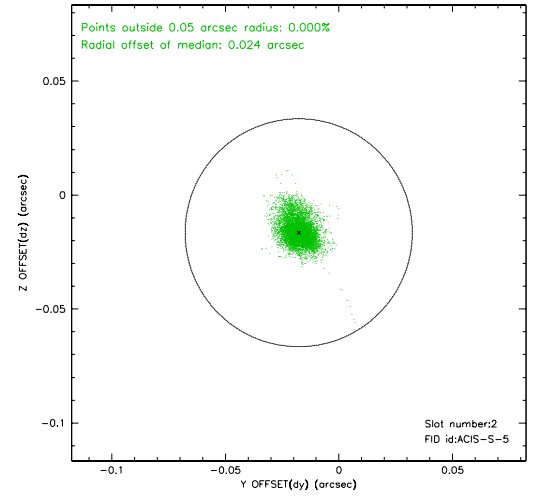
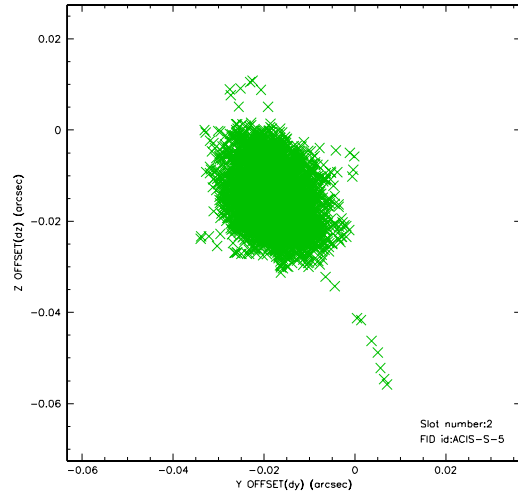
2.5.1 Slot 0



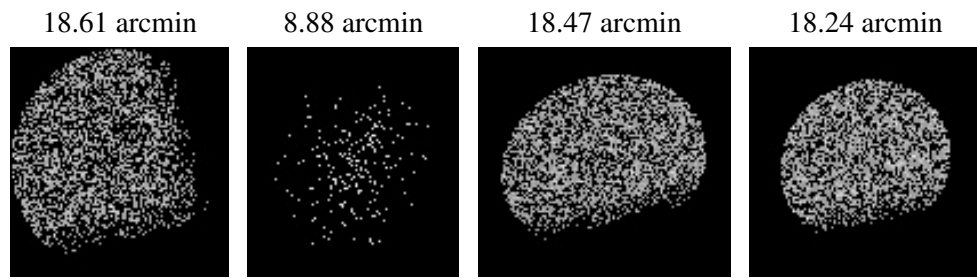
2.5.2 Slot 1



2.5.3 Slot 2



3 Point Sources



A Summary

A.1 Status

V&V Scientist	Beth Sundheim
V&V Date (YYYY-MM-DD)	2006.07.03
V&V Edition	1
V&V Disposition and Status	OK
V&V Charge Time	28.668

A.2 Comments