

V&V Reference Report

L2 ASCDS Version : 8.4.5

Observation 435 - L2 Version 4
Chandra X-Ray Center

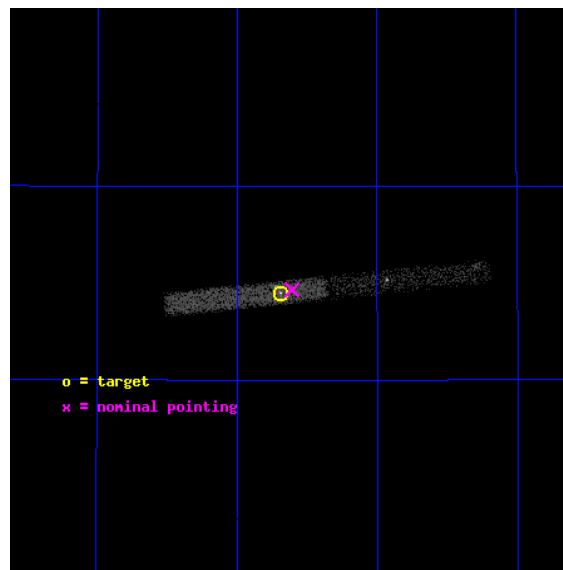
L2 Processing Date : Aug 28 2012

Contents

1	Front	2
2	OBI	3
2.1	OBI	3
2.1.1	Images	3
2.1.2	Bias	3
2.1.3	Parameters	4
2.1.4	Events	4
2.2	Compared Parameters	5
2.3	Aspect	6
2.4	Star Slots	9
2.4.1	Slot 3	9
2.4.2	Slot 4	10
2.4.3	Slot 5	11
2.4.4	Slot 6	12
2.4.5	Slot 7	13
2.5	FID Slots	14
2.5.1	Slot 0	14
2.5.2	Slot 1	15
2.5.3	Slot 2	16
A	Summary	17
A.1	Status	17
A.2	Comments	17

1 Front

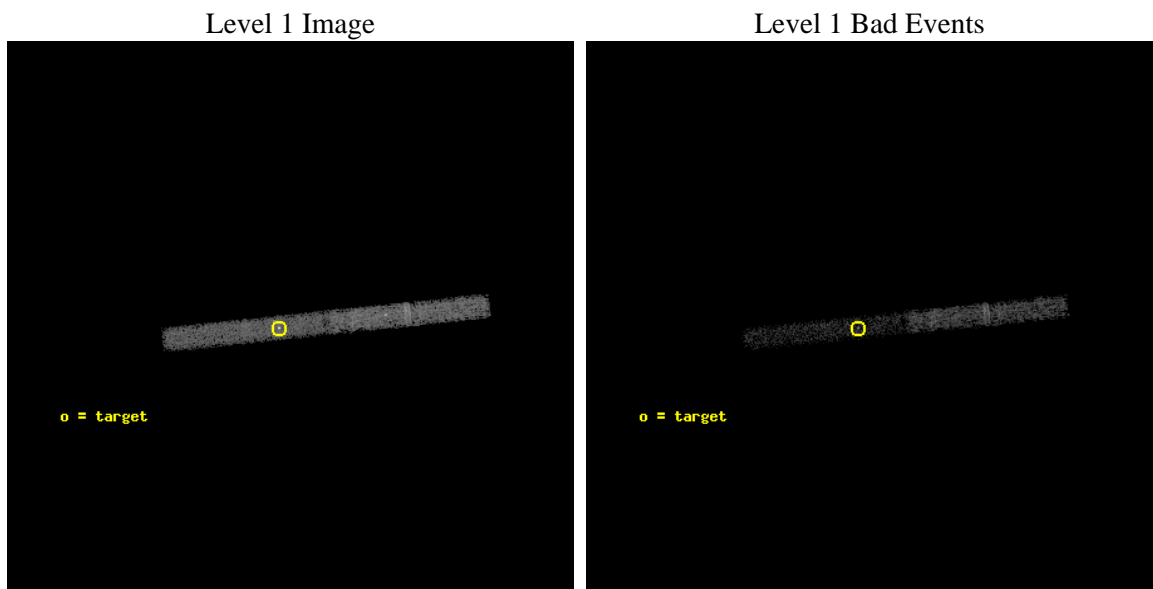
seq_num	700107	Sequence number
obs_id	435	Observation id
title	OBSCURED QUASARS AND AGN	Proposal title
observer	Dr. Stephen Murray	Principal investigator
object	3C 351	Source name
dtcycle	0	
cycle	P	events from which exps? Prim/Second/Both
ra_targ	256.172083	Observer's specified target RA [deg]
dec_targ	60.741778	Observer's specified target Dec [deg]
ra_nom	256.15245471517	Nominal RA [deg]
dec_nom	60.744608284473	Nominal Dec [deg]
roll_nom	174.07007551745	Nominal Roll [deg]
revision	4	Processing version of data
ontime	9898.5	Sum of GTIs [s]
livetime	9147.6600621026	Livetime [s]
ontime6	9897.9589899331	Sum of GTIs [s]
ontime7	9898.5	Sum of GTIs [s]
l2events	8636	Number of level 2 events



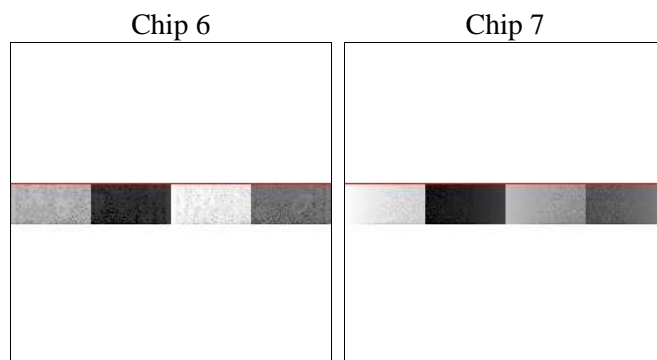
2 OBI

2.1 OBI

2.1.1 Images



2.1.2 Bias



2.1.3 Parameters

obi_num	0	Obi number	sched_exp_time	9500.000000	[s] Scheduled observation exposure time
ascdsver	8.4.5	Processing system revision	ontime	9898.5	Sum of GTIs [s]
caldsver	4.5.1.1	 	ontime6	9897.9589899331	Sum of GTIs [s]
date	2012-08-28T18:42:16	Date and time of file creation	ontime7	9898.5	Sum of GTIs [s]
revision	4	Processing version of data	l1events	28446	Number of level 1 events

2.1.4 Events

	ccd 6	ccd 7
level 1 events	15013	13433
rejected events	13410	5807
rejected %	89%	43%

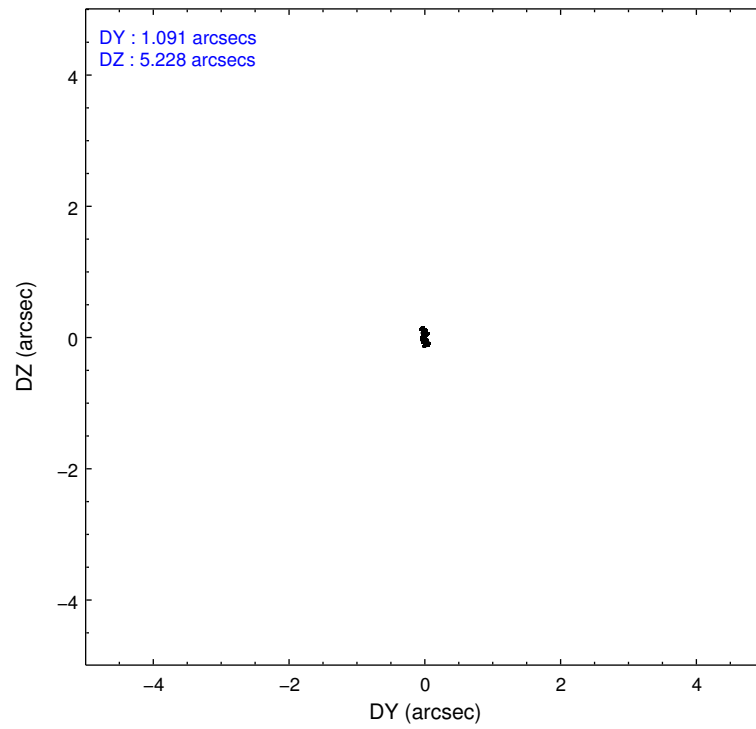
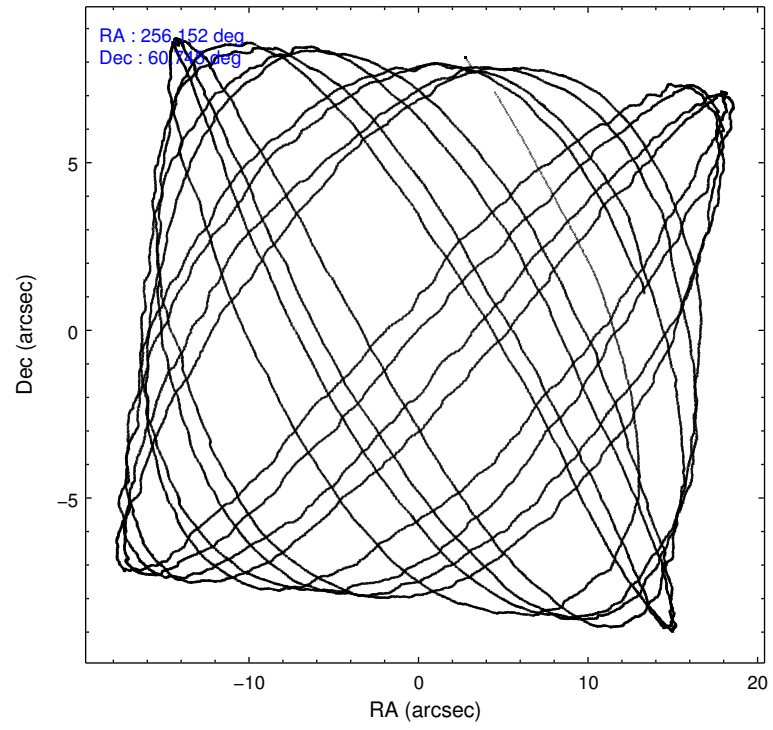
	ccd 6	ccd 7
grade 0 events	644	1577
	4%	11%
grade 1 events	1	21
	0%	0%
grade 2 events	218	1641
	1%	12%
grade 3 events	306	973
	2%	7%
grade 4 events	281	942
	1%	7%
grade 5 events	332	1051
	2%	7%
grade 6 events	195	2662
	1%	19%
grade 7 events	13036	4566
	86%	33%

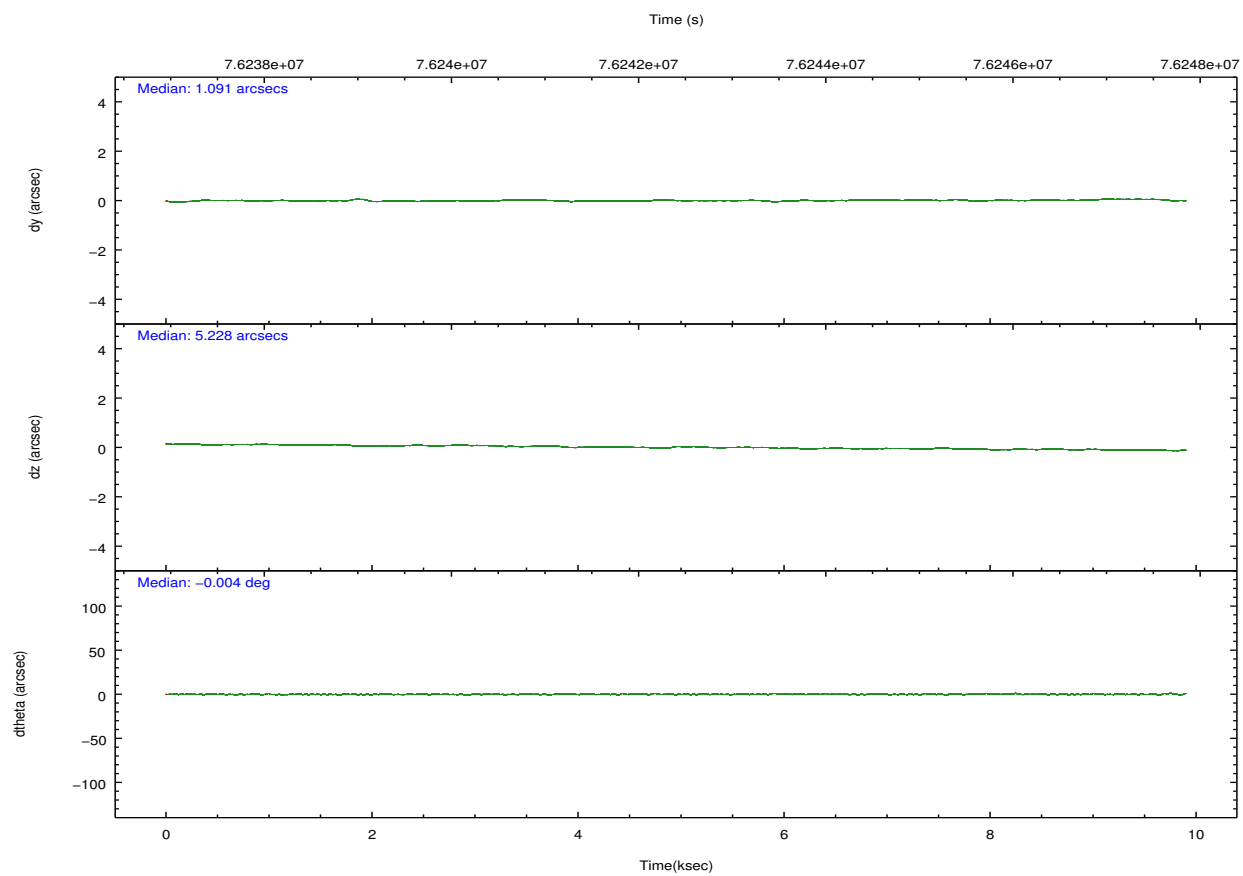
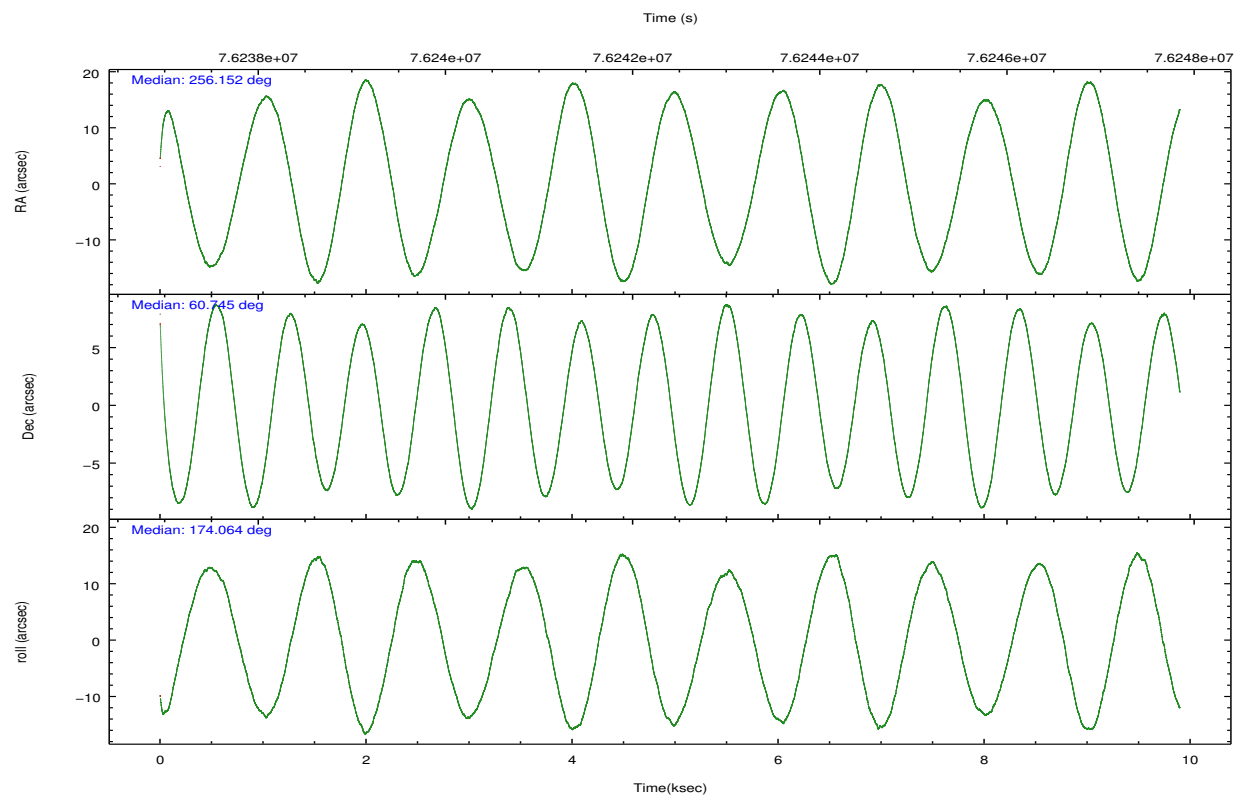
2.2 Compared Parameters

Parameter	Planned	Actual
Instrument	ACIS	ACIS
Detector	ACIS-67	ACIS-67
Grating	NONE	NONE
Data mode	VFAINT	VFAINT
Observation mode	POINTING	POINTING
[deg] Pointing RA	256.203653	256.1524547151733
[deg] Pointing Dec	60.755881	60.74460828447343
[deg] Pointing Roll	173.868774	174.0700755174476
[mm] SIM focus pos	-0.684267	-0.6828225247311905
[mm] SIM defocus	0	0.001444936568705701
[mm] SIM translation stage pos	-190.132523	-190.1400660498719
[mm] SIM translation stage offset	0	0.00754346686406393
[s] Observation start time (MET)	76237850.184000	76236782.232931
Observation start date	2000-06-01T09:09:46	2000-06-01T08:53:02
[s] Observation end time (MET)	76247350.184000	76248108.995848
Observation end date	2000-06-01T11:48:06	2000-06-01T12:01:48
Read mode	TIMED	TIMED

Parameter	Planned	Actual
Obspar format version number	7	7
Obspar file type	PREDICTED	ACTUAL
Obspar update status	NONE	UPDATED
Number of optional ACIS chips dropped	0	0
On-chip summing requested	N	N
Subarray requested	CUSTOM	1/8
Subarray start row	447	447
Subarray row count	128	128
Alternating exposures requested	N	N
[s] Primary exposure time	0.000000	0.5

2.3 Aspect



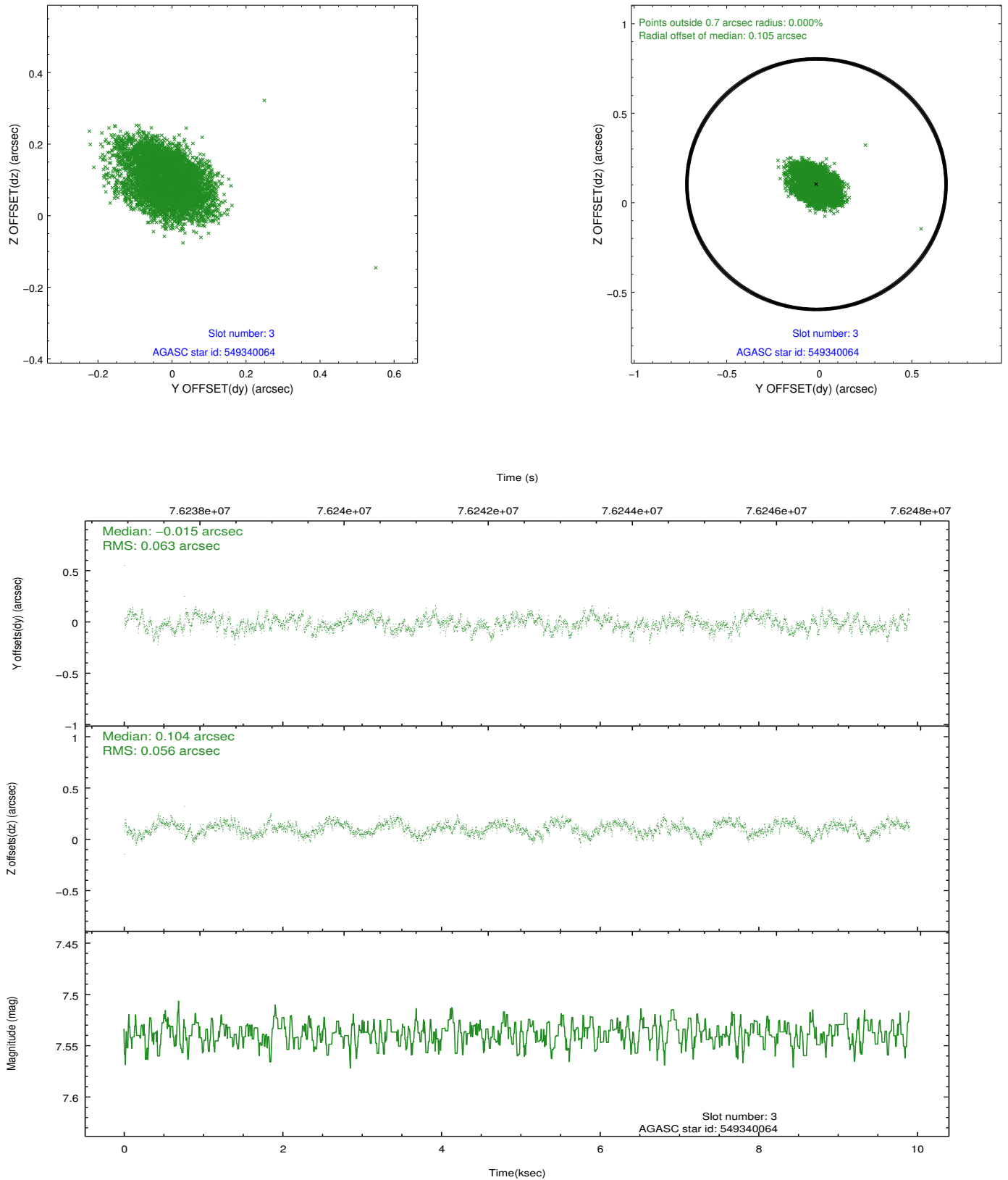


Slot Statistics

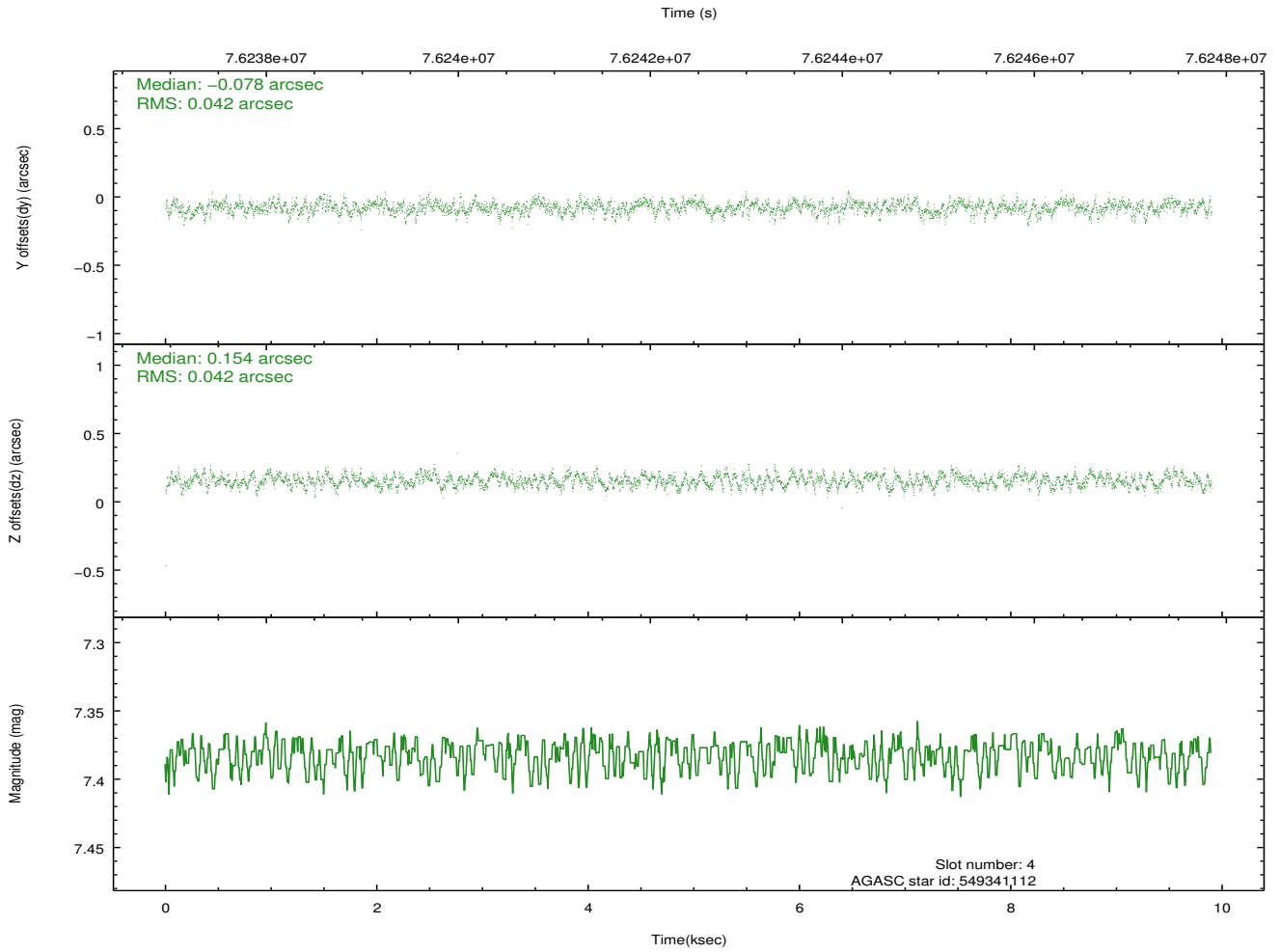
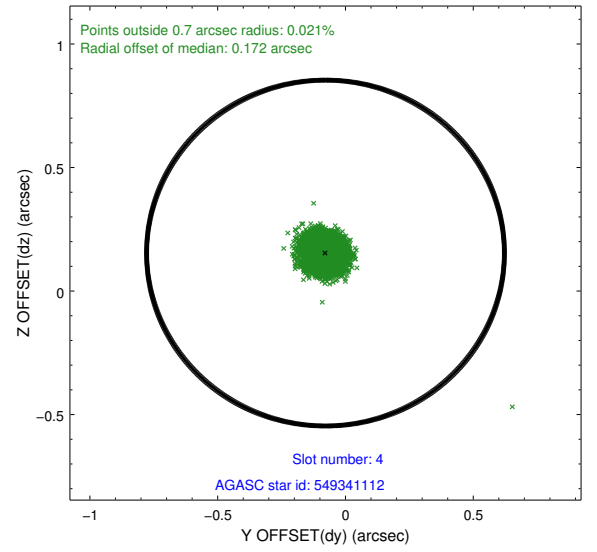
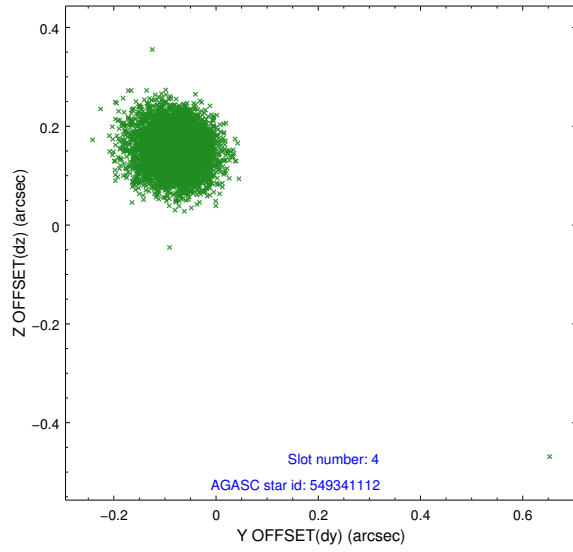
slot	status	id	mag	n_pts	med_dy	med_dz	dr1	dr2	ra	dec	mean_y	mean_z
0	FID	ACIS-S-2	7.10	2415	-0.039	0.001	0.007	0.010	0.000000	0.000000	-753.72	-1726.35
1	FID	ACIS-S-4	7.21	2415	0.007	0.018	0.005	0.011	0.000000	0.000000	2159.36	181.60
2	FID	ACIS-S-5	7.24	2415	0.001	-0.010	0.006	0.010	0.000000	0.000000	-1805.83	175.85
3	GUIDE	549340064	7.54	4830	-0.015	0.104	0.089	0.144	255.160960	61.023929	1912.39	-779.43
4	GUIDE	549341112	7.38	4830	-0.078	0.154	0.061	0.098	257.120048	61.364935	-1336.31	-2360.23
5	GUIDE	549343168	8.82	4829	-0.018	-0.052	0.091	0.144	255.365146	60.257248	1297.50	1934.78
6	GUIDE	549335568	9.15	4827	0.056	-0.213	0.114	0.177	256.855976	60.048810	-1437.30	2399.83
7	GUIDE	549325264	8.70	4829	0.057	0.008	0.071	0.118	256.803169	61.105796	-902.21	-1368.34

2.4 Star Slots

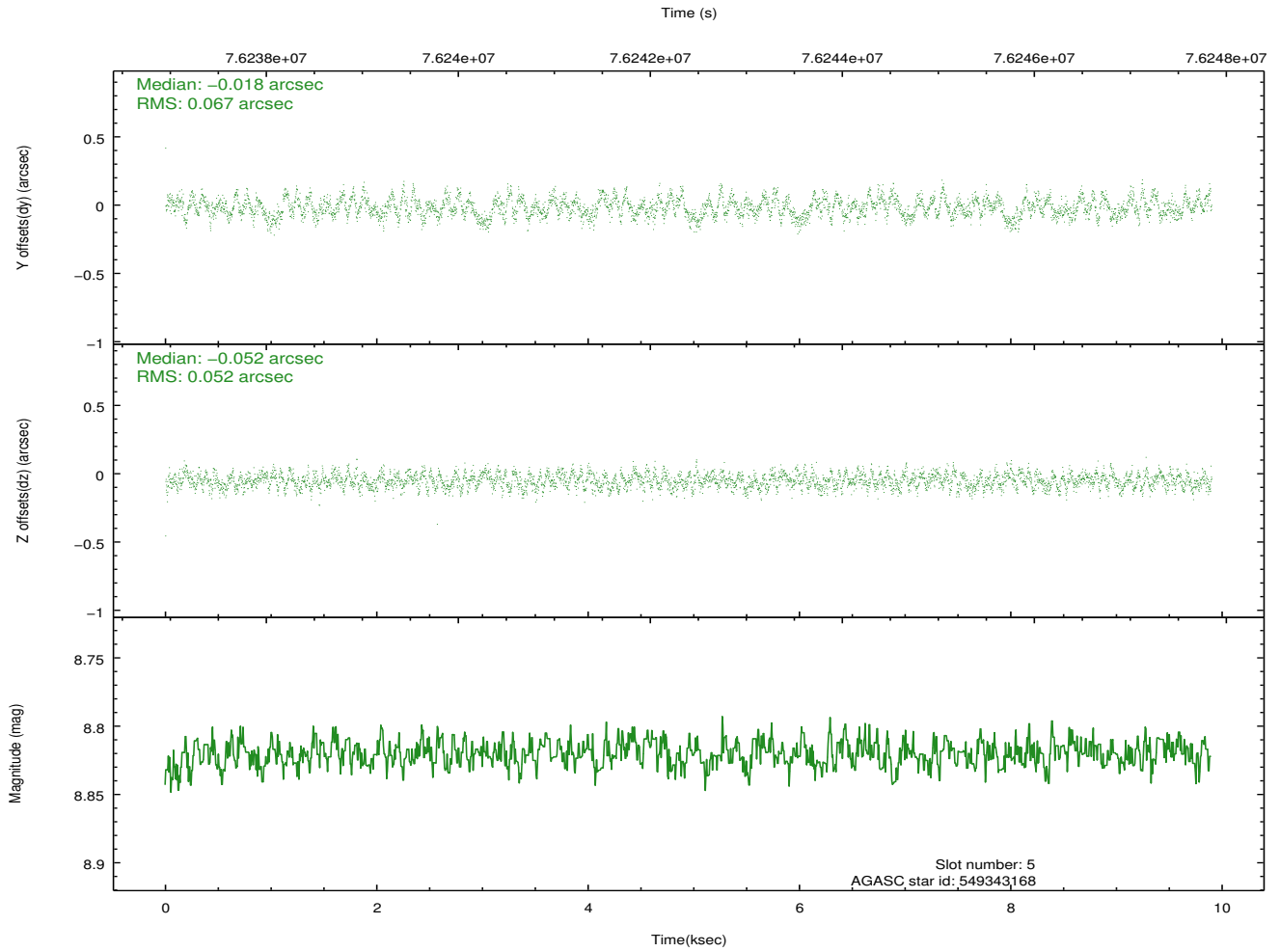
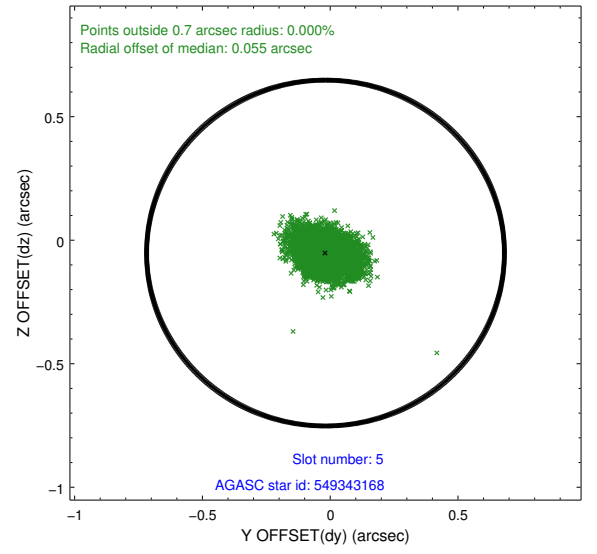
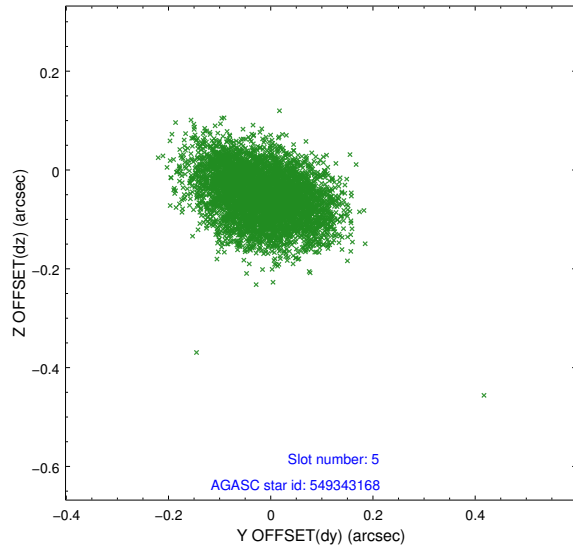
2.4.1 Slot 3



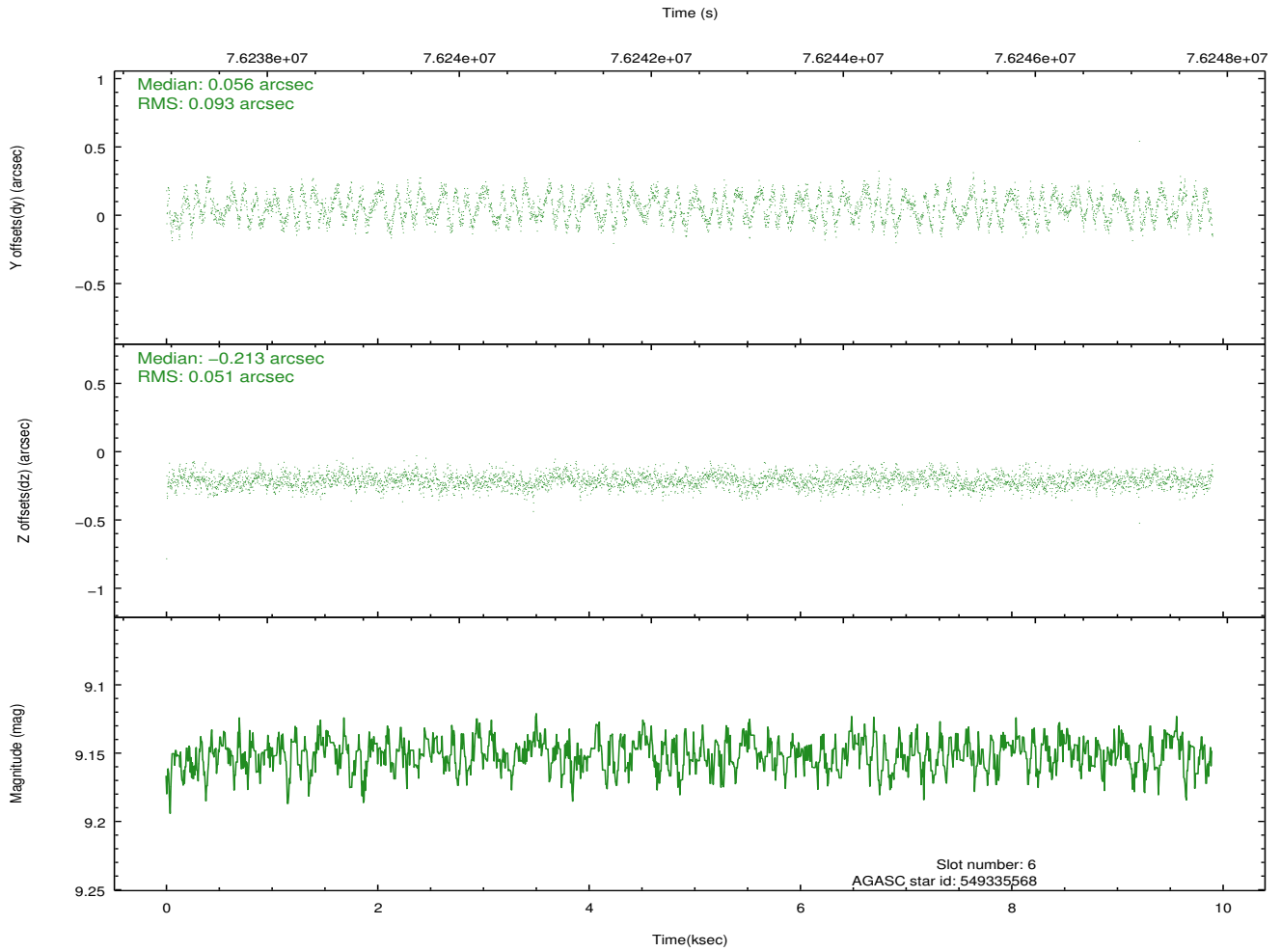
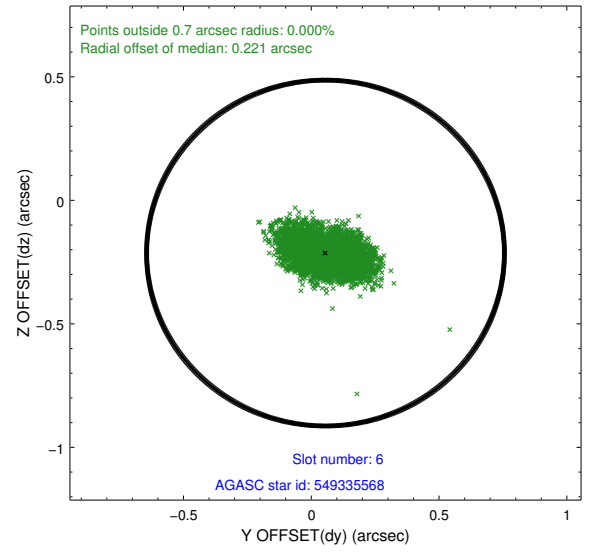
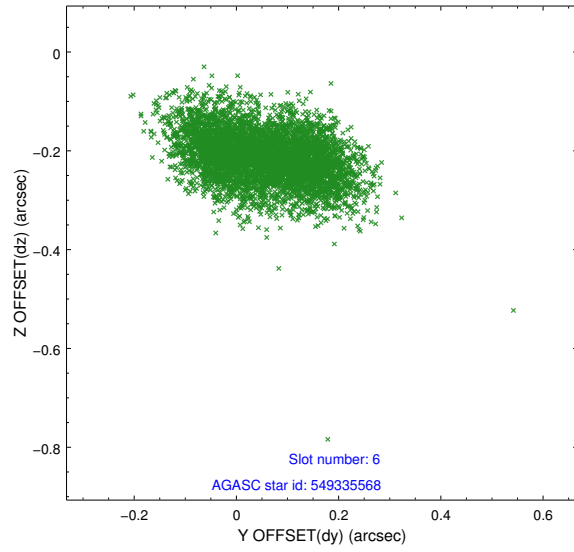
2.4.2 Slot 4



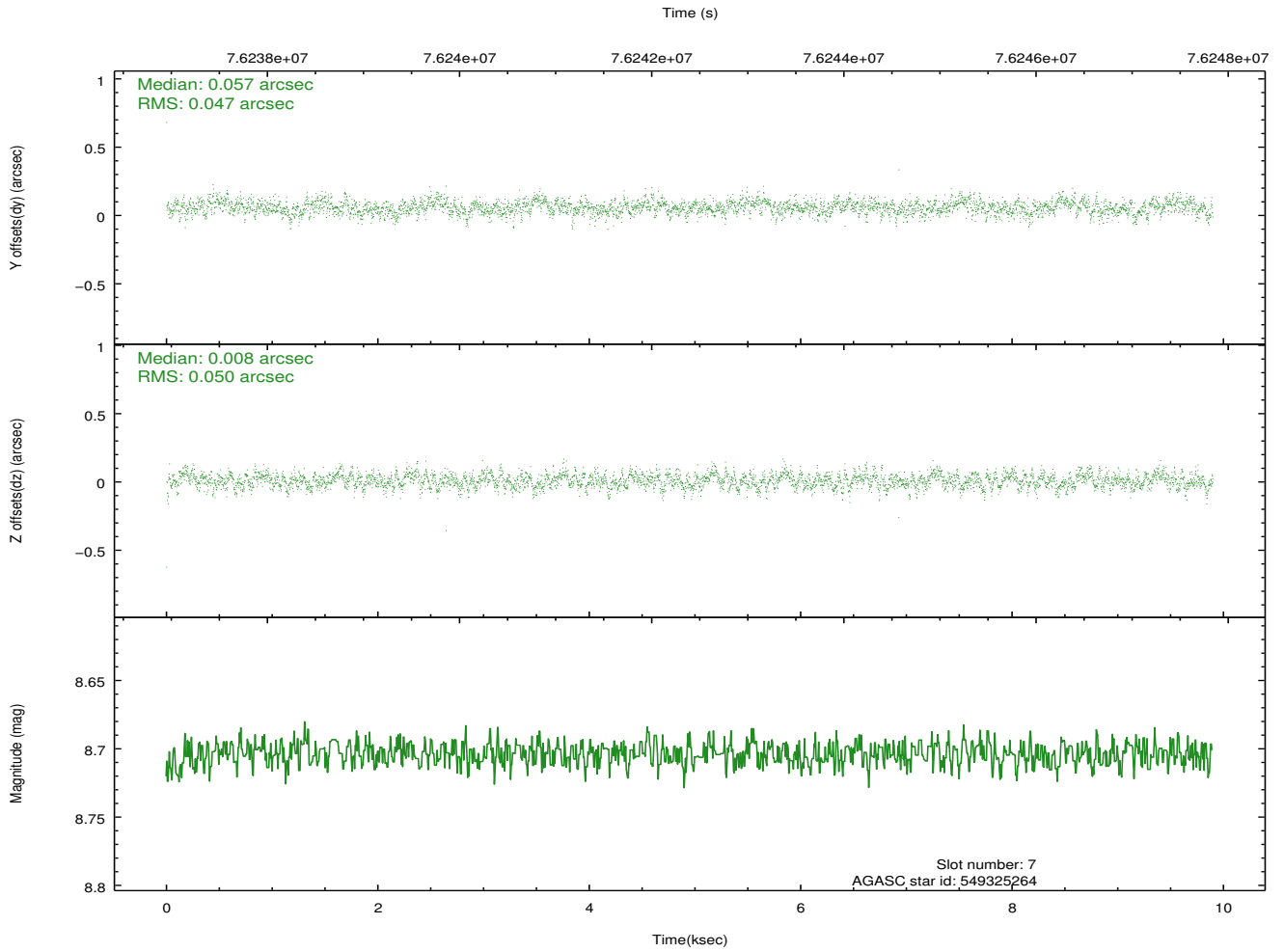
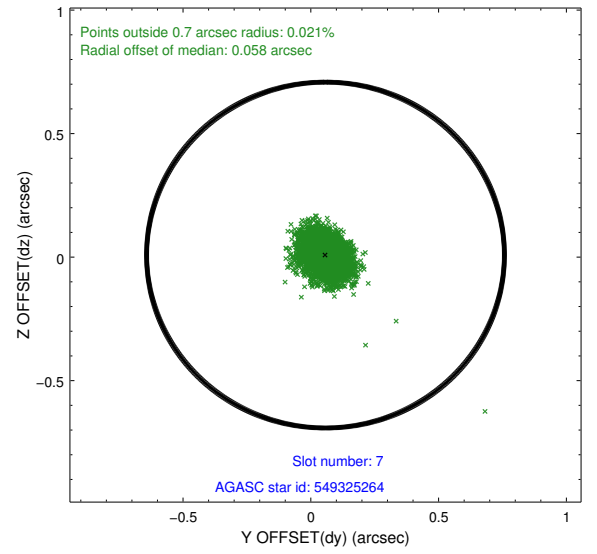
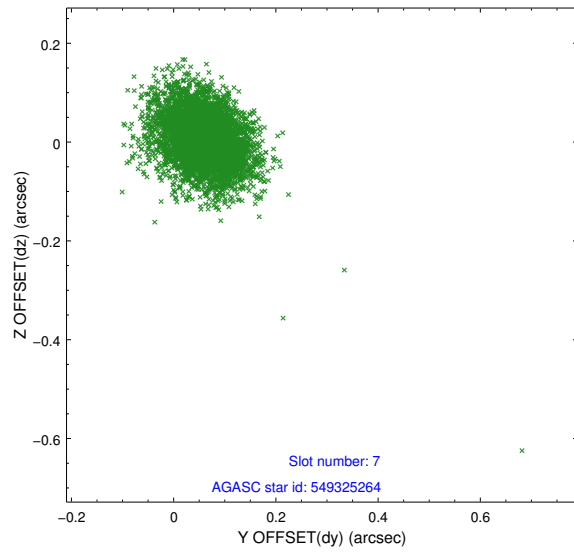
2.4.3 Slot 5



2.4.4 Slot 6

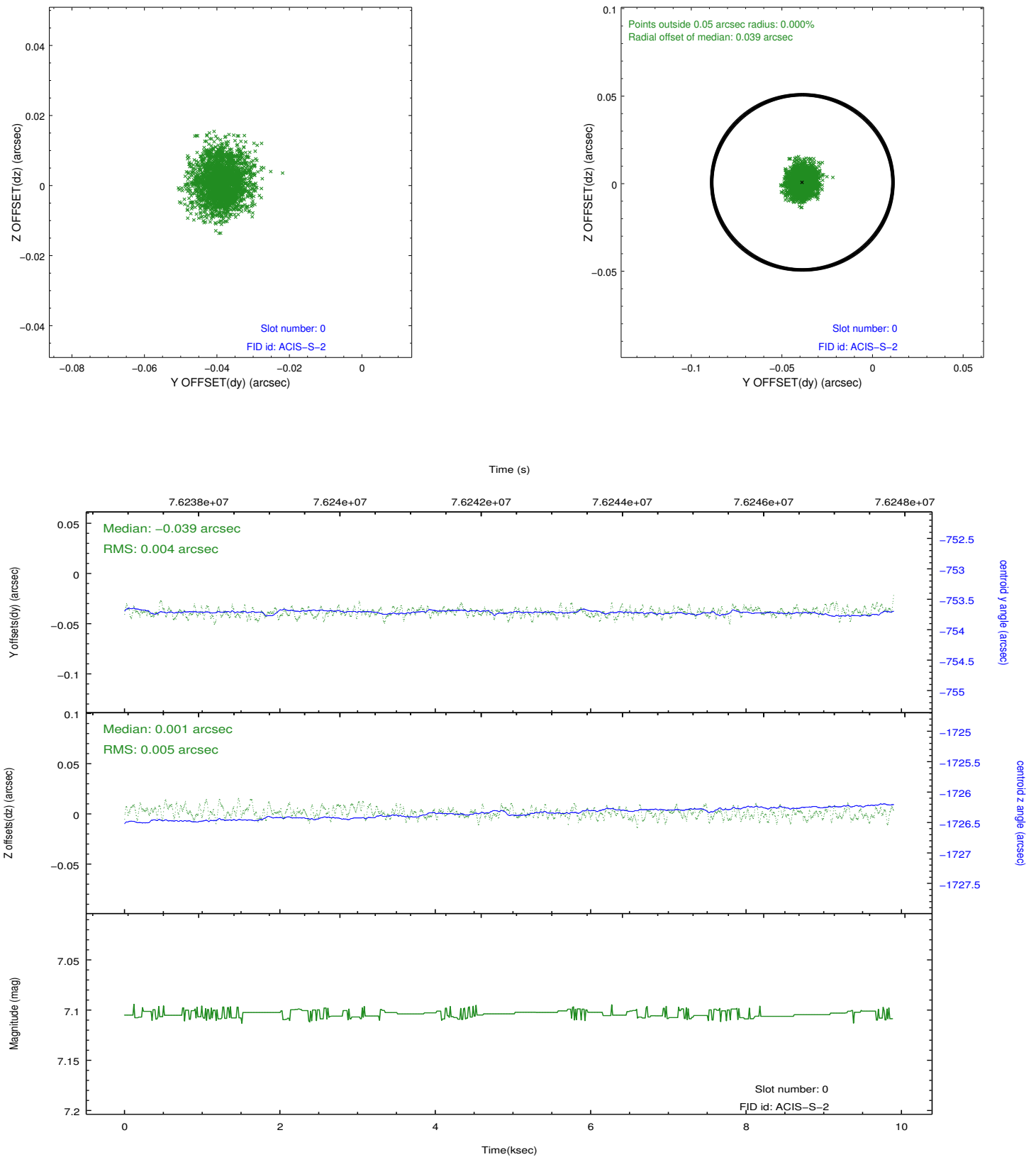


2.4.5 Slot 7

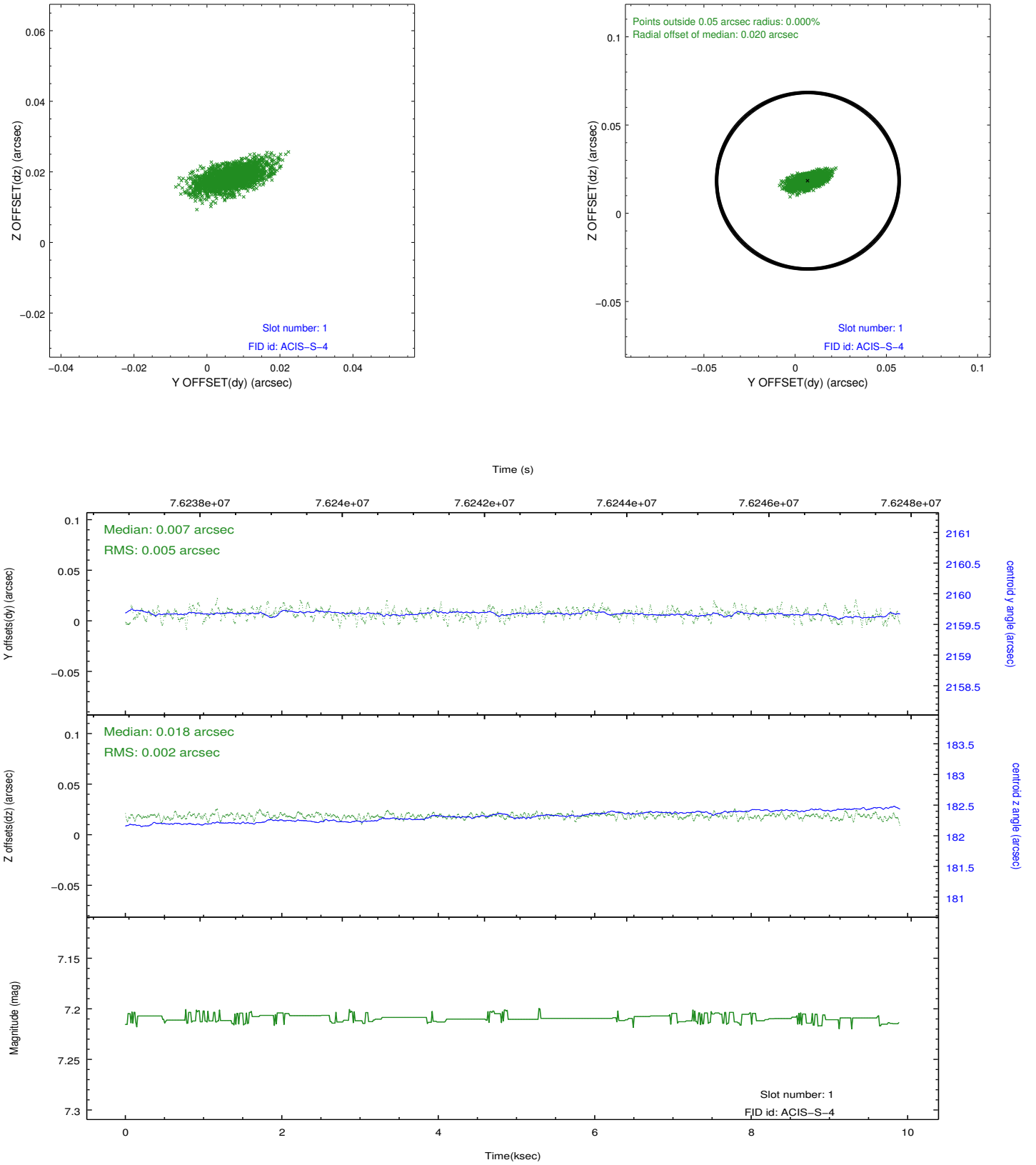


2.5 FID Slots

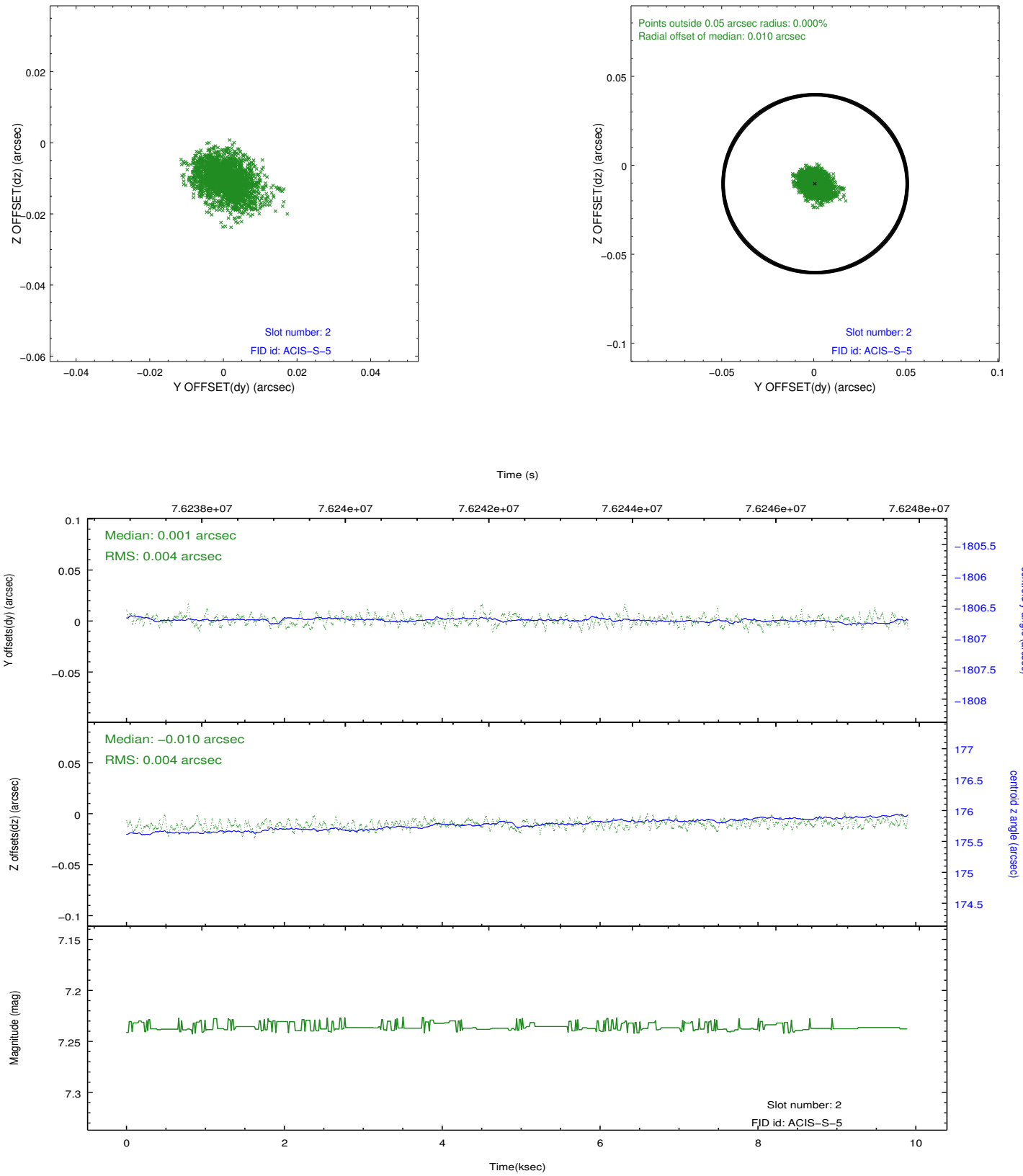
2.5.1 Slot 0



2.5.2 Slot 1



2.5.3 Slot 2



A Summary

A.1 Status

V&V Scientist	Jen Lauer
V&V Date (YYYY-MM-DD)	2012.08.31
V&V Edition	1
V&V Disposition and Status	OK
V&V Charge Time	9.898

A.2 Comments