

V&V Reference Report

L2 ASCDS Version : 7.6.8

Observation 4265 - L2 Version 001
Chandra X-Ray Center

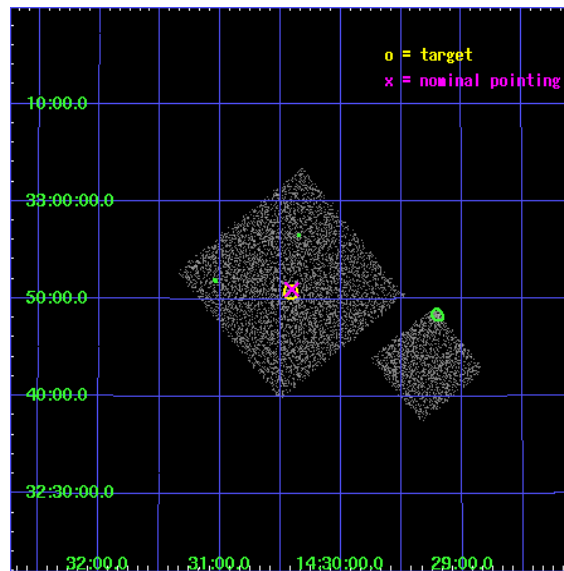
L2 Processing Date : Jul 29 2006

Contents

1	Front	2
2	OBI	3
2.1	OBI	3
2.1.1	Images	3
2.1.2	Bias	3
2.1.3	Parameters	4
2.1.4	Events	4
2.2	Compared Parameters	5
2.3	Aspect	6
2.4	Star Slots	9
2.4.1	Slot 3	9
2.4.2	Slot 4	10
2.4.3	Slot 5	11
2.4.4	Slot 6	12
2.4.5	Slot 7	13
2.5	FID Slots	14
2.5.1	Slot 0	14
2.5.2	Slot 1	15
2.5.3	Slot 2	16
3	Point Sources	17
A	Summary	18
A.1	Status	18
A.2	Comments	18

1 Front

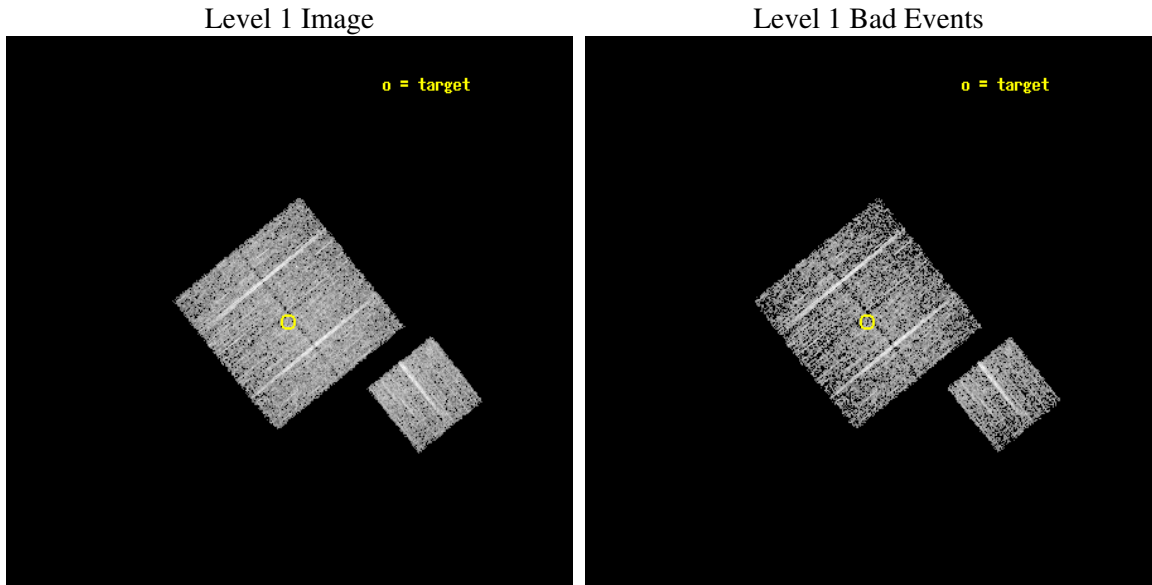
seq_num	900308
obs_id	4265
title	A CHANDRA WIDE-FIELD SURVEY TO MAP THE COSMIC WEB AND INVESTIGATE THE EVOLUTION OF NUCLEAR ACCRETION
observer	Dr. Christine Jones
object	SS32
dtcycle	0
cycle	P
ra_targ	217.604097
dec_targ	32.845836
ra_nom	217.60146051558
dec_nom	32.84984637216
roll_nom	141.01012712922
revision	2
ontime	4674.7999910116
livetime	4613.7202875914
ontime0	4674.7999910116
ontime1	4671.6590107679
ontime2	4674.7999910116
ontime3	4674.7999910116
ontime6	4674.7999910116
l2events	9177



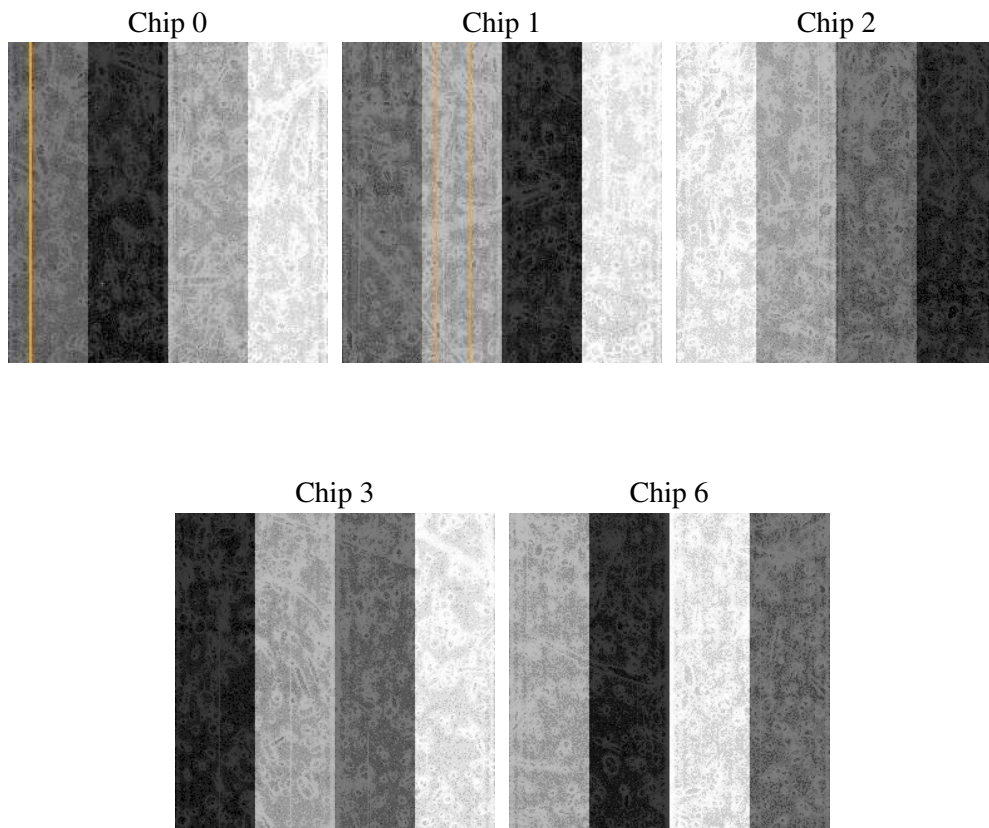
2 OBI

2.1 OBI

2.1.1 Images



2.1.2 Bias



2.1.3 Parameters

obi_num	1
ascdsver	7.6.8
caldbver	3.2.2
date	2006-07-29T20:21:51
revision	2

sched_exp_time	4900.000000
ontime	4680.1059072912
ontime0	4683.2469273806
ontime1	4676.9649270475
ontime2	4680.1059072912
ontime3	4680.1059072912
ontime6	4683.2469273806
l1events	110142

2.1.4 Events

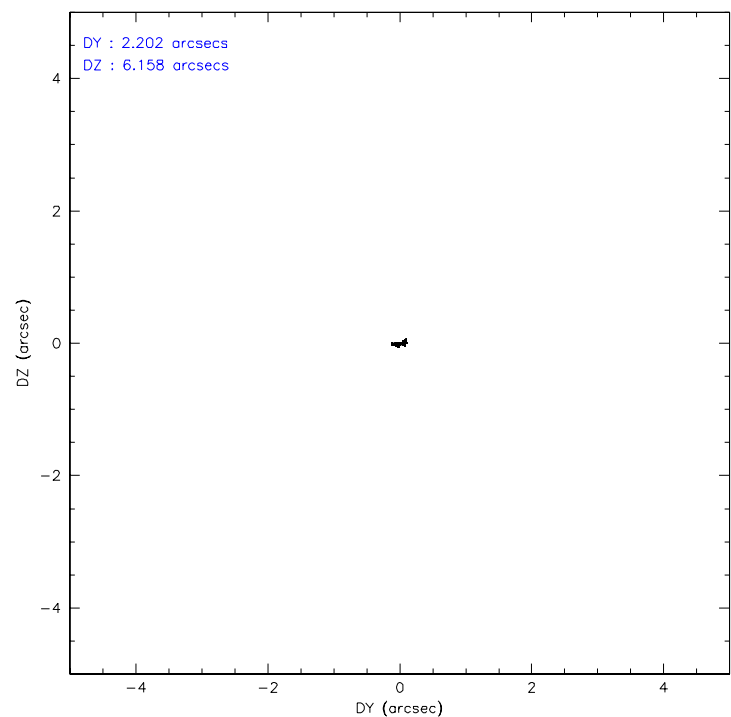
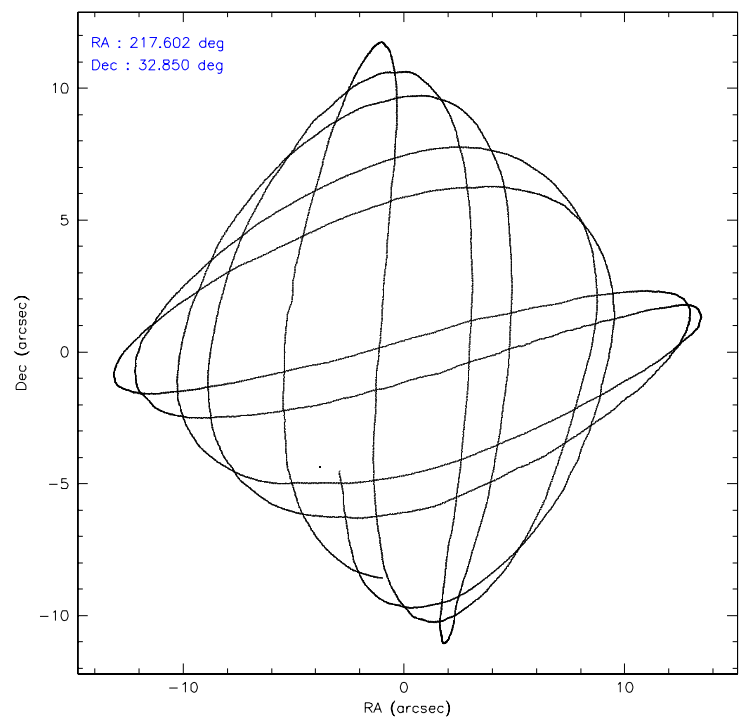
	ccd 0	ccd 1	ccd 2	ccd 3	ccd 6
level 1 events	20418	21870	22809	21596	23449
rejected events	18206	19530	20636	19580	21101
rejected %	89%	89%	90%	90%	89%

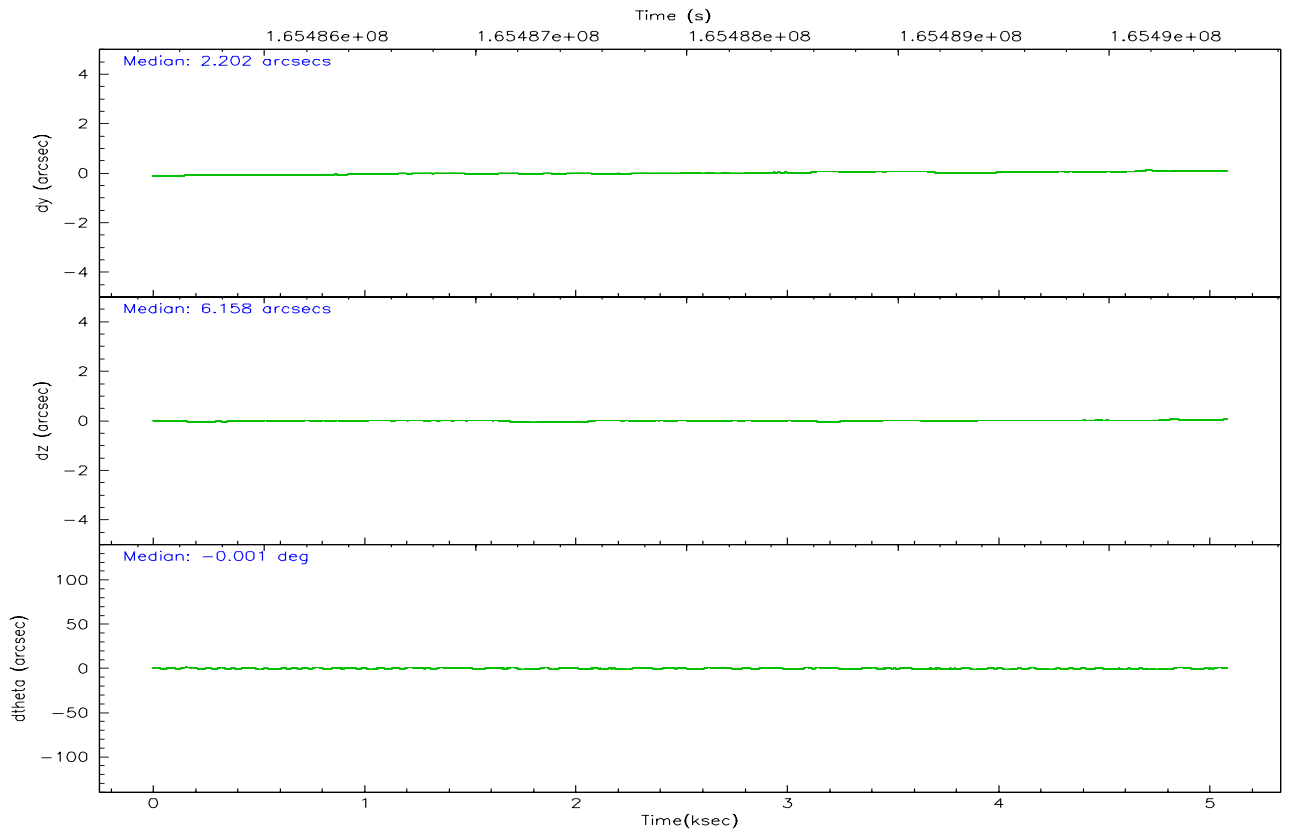
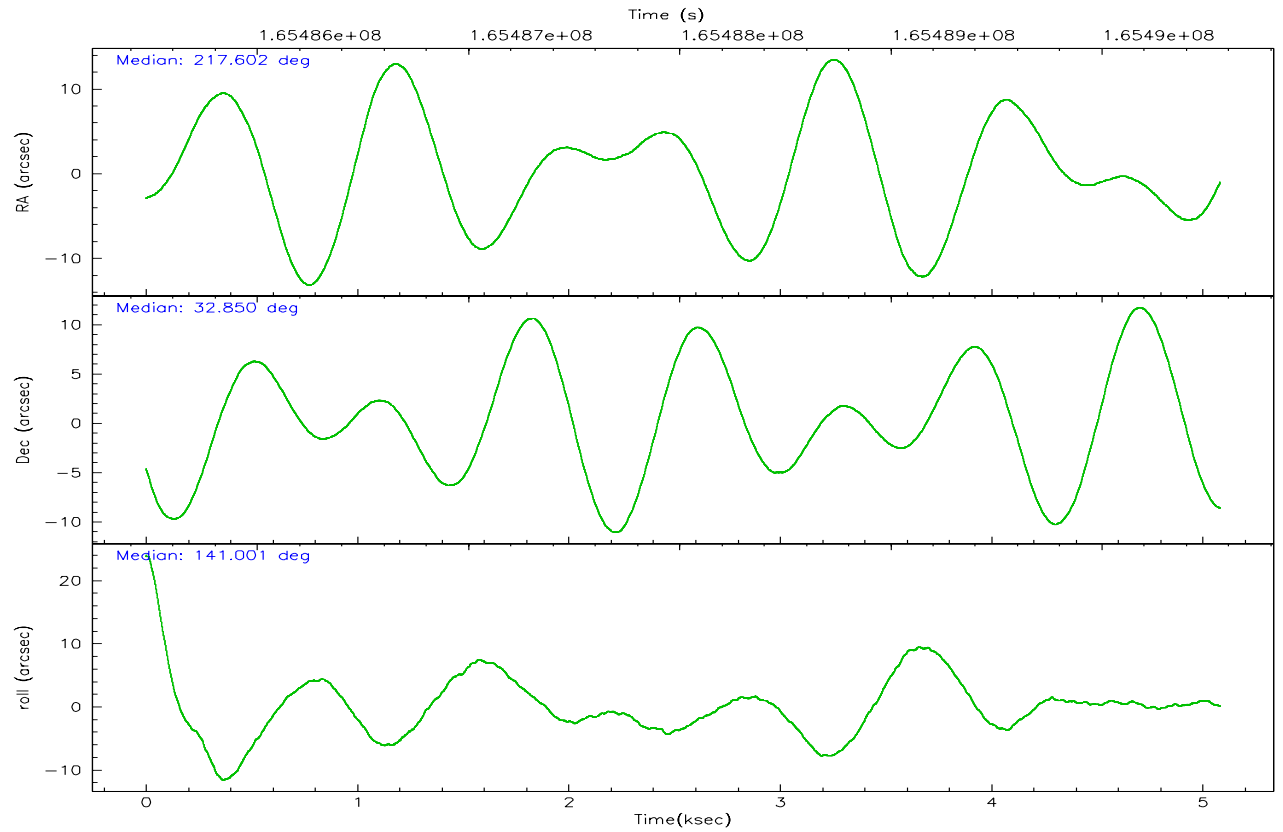
	ccd 0	ccd 1	ccd 2	ccd 3	ccd 6
grade 0 events	807	843	814	758	866
	3%	3%	3%	3%	3%
grade 1 events	12	14	11	15	7
	0%	0%	0%	0%	0%
grade 2 events	484	497	470	411	465
	2%	2%	2%	1%	1%
grade 3 events	260	287	261	247	286
	1%	1%	1%	1%	1%
grade 4 events	250	284	259	219	281
	1%	1%	1%	1%	1%
grade 5 events	645	750	619	723	742
	3%	3%	2%	3%	3%
grade 6 events	418	433	371	384	451
	2%	1%	1%	1%	1%
grade 7 events	17542	18762	20004	18839	20351
	85%	85%	87%	87%	86%

2.2 Compared Parameters

Parameter	Planned	Actual	Parameter	Planned	Actual
Instrument	ACIS	ACIS	Obspar format version number	6	6
Detector	ACIS-01236	ACIS-01236	Obspar file type	PREDICTED	ACTUAL
Grating	NONE	NONE	Obspar update status	NONE	UPDATED
Data mode	VFAINT	VFAINT	On-chip summing requested	N	N
Observation mode	POINTING	POINTING	Subarray requested	NONE	NONE
Pointing RA	217.633717	217.6014605155843	Alternating exposures requested	N	N
Pointing Dec	32.845749	32.84984637216019	Primary exposure time	0.000000	3.1
Pointing Roll	140.783935	141.0101271292208			
SIM focus pos (mm)	-0.782348	-0.7809083437167272			
SIM defocus (mm)	0	0.001439871863259334			
SIM translation stage pos (mm)	-233.592463	-233.5874344608287			
SIM translation stage offset (mm)	0	-0.005018542100998502			
Observation start time	165485654.184000	165485278.27893			
Observation start date	2003-03-31T08:13:10	2003-03-31T08:07:58			
Observation end time	165490554.184000	165490688.22916			
Observation end date	2003-03-31T09:34:50	2003-03-31T09:38:08			
Read mode	TIMED	TIMED			

2.3 Aspect



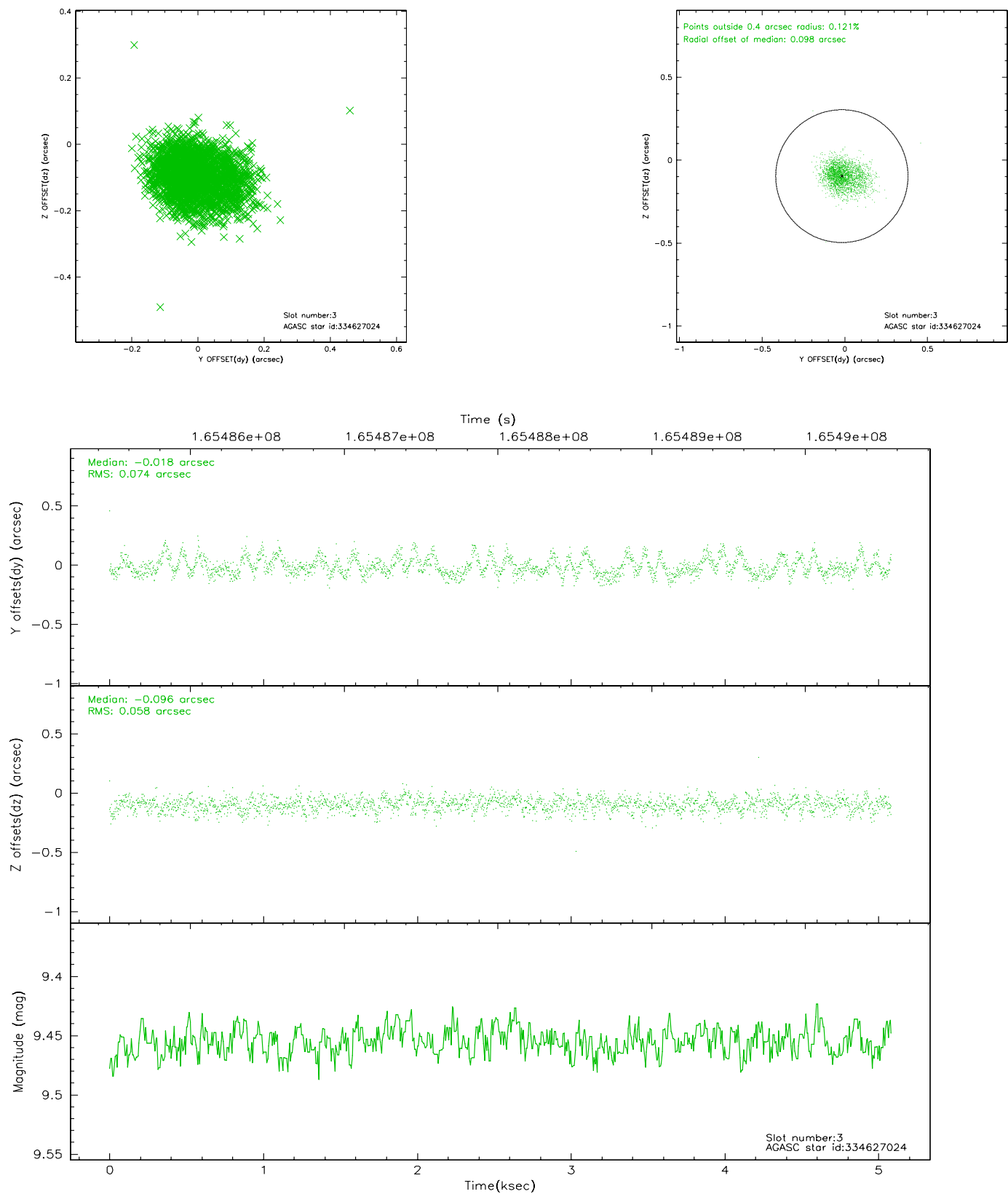


Slot Statistics

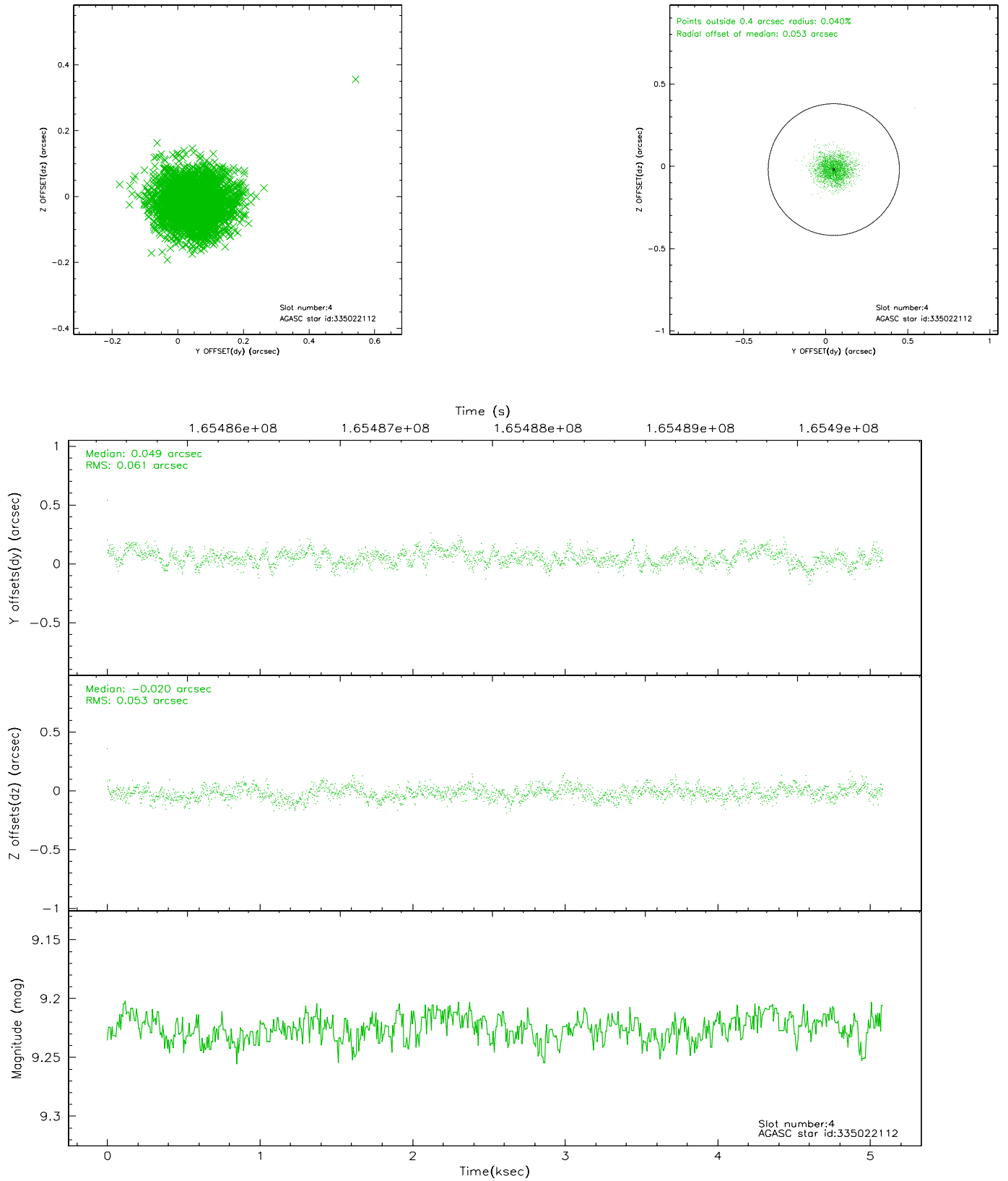
slot	status	id	mag	n_pts	med_dy	med_dz	dr1	dr2	ra	dec	mean_y	mean_z
0	FID	ACIS-I-1	7.25	1240	-0.026	0.033	0.006	0.012	0.000000	0.000000	937.57	-829.51
1	FID	ACIS-I-5	7.24	1240	-0.032	0.032	0.006	0.011	0.000000	0.000000	-1809.85	1067.43
2	FID	ACIS-I-6	7.26	1240	-0.034	0.005	0.006	0.010	0.000000	0.000000	401.85	1713.23
3	GUIDE	334627024	9.45	2480	-0.018	-0.096	0.099	0.164	217.318801	32.278221	-548.35	2187.47
4	GUIDE	335022112	9.23	2481	0.049	-0.020	0.085	0.138	216.659296	32.794758	2176.94	1997.19
5	GUIDE	335025848	9.74	2458	0.057	-0.051	0.119	0.192	217.530531	33.778292	2363.63	-2405.08
6	GUIDE	335027640	9.11	2481	-0.011	0.119	0.087	0.153	218.092211	33.193770	-274.59	-1847.41
7	GUIDE	335029368	10.14	2478	-0.087	0.048	0.141	0.232	217.181018	33.065030	1559.20	248.98

2.4 Star Slots

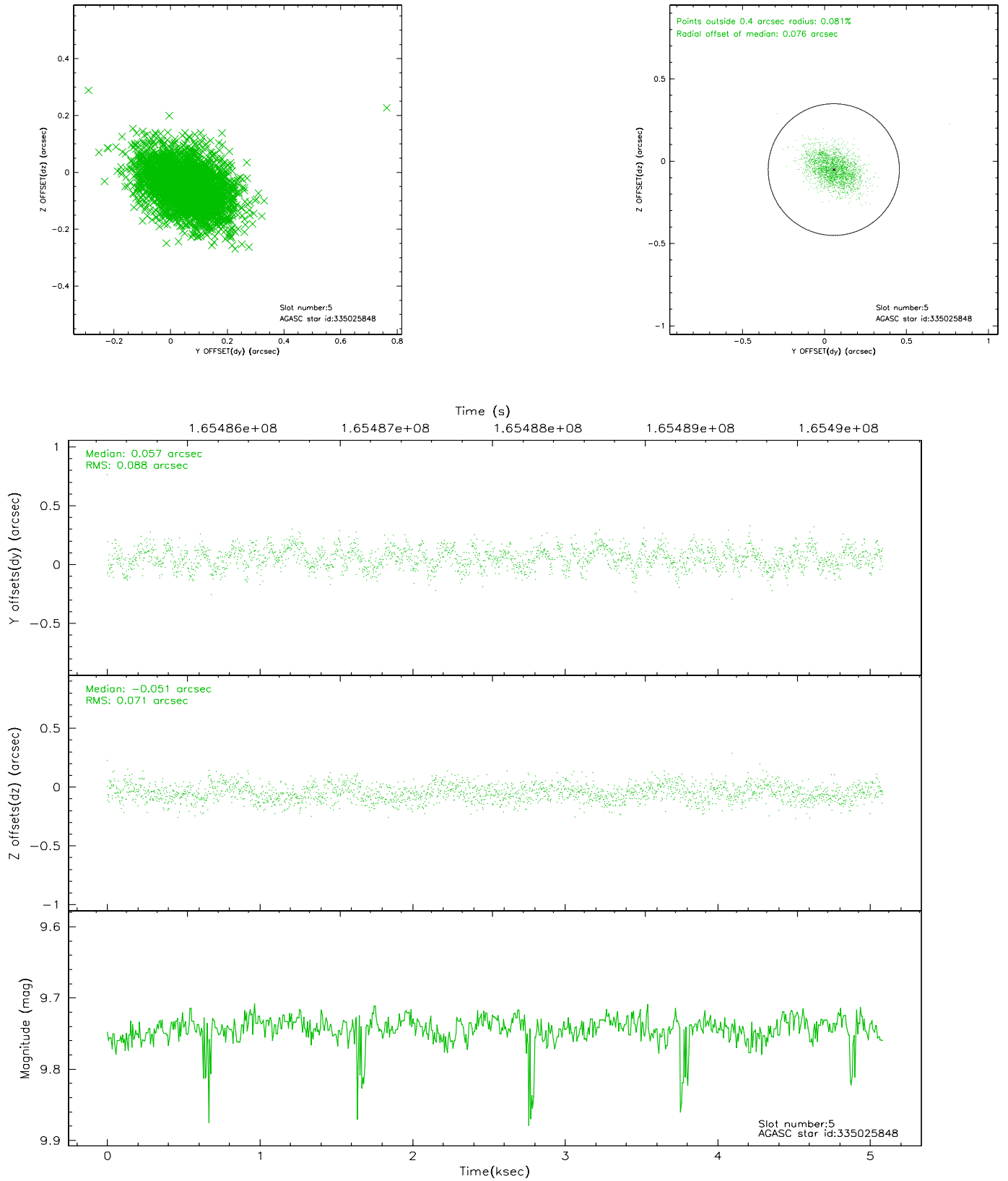
2.4.1 Slot 3



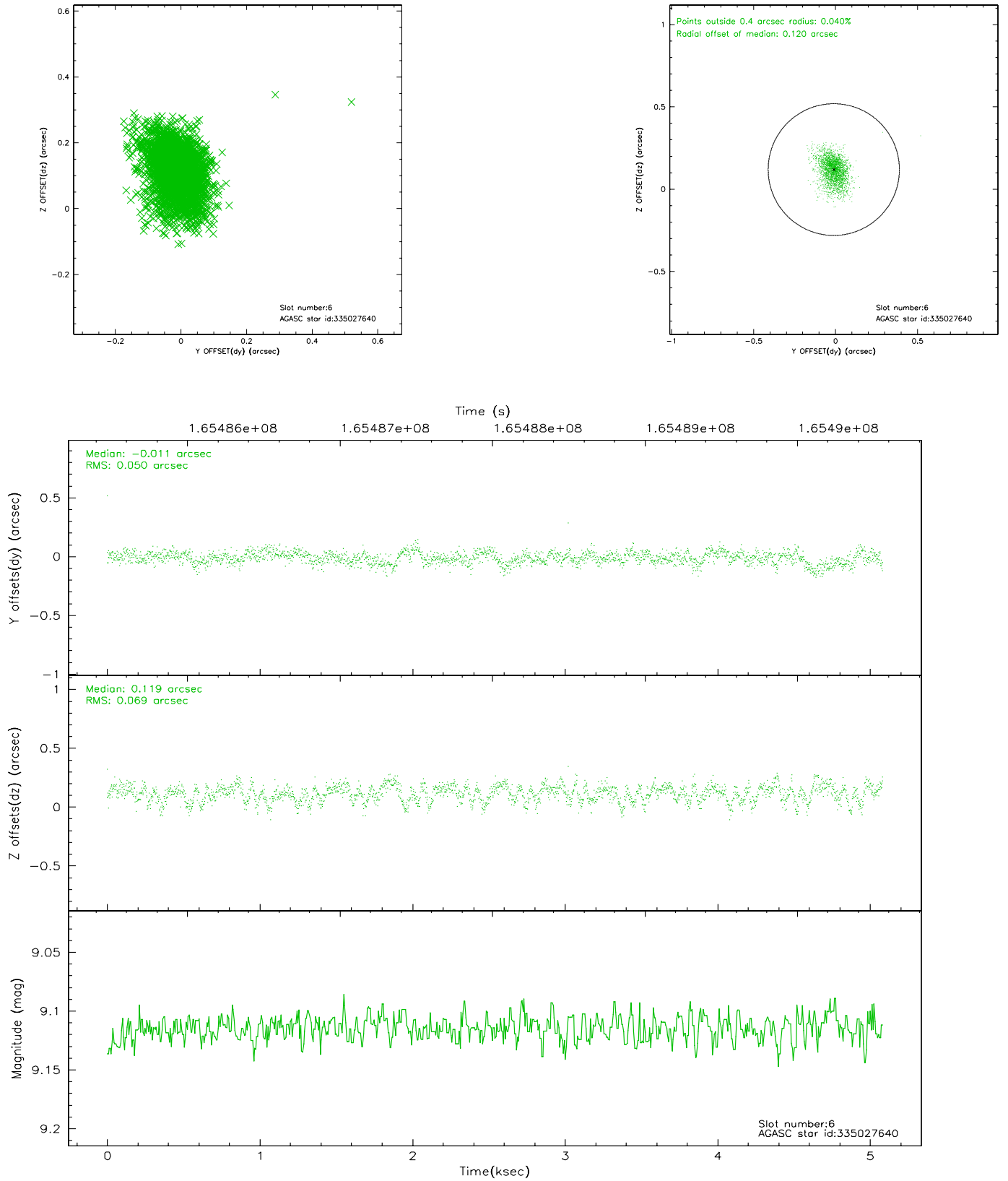
2.4.2 Slot 4



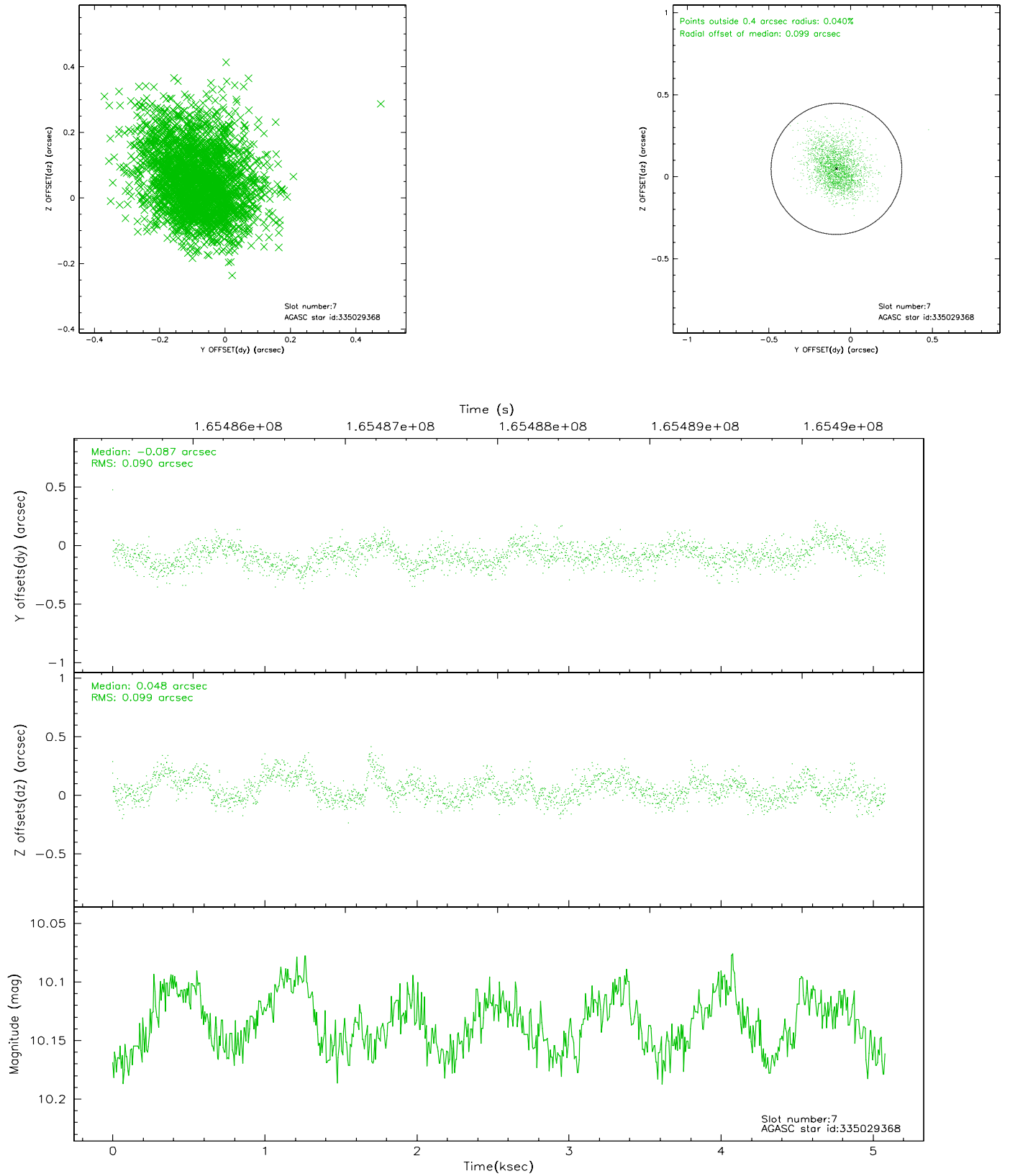
2.4.3 Slot 5



2.4.4 Slot 6

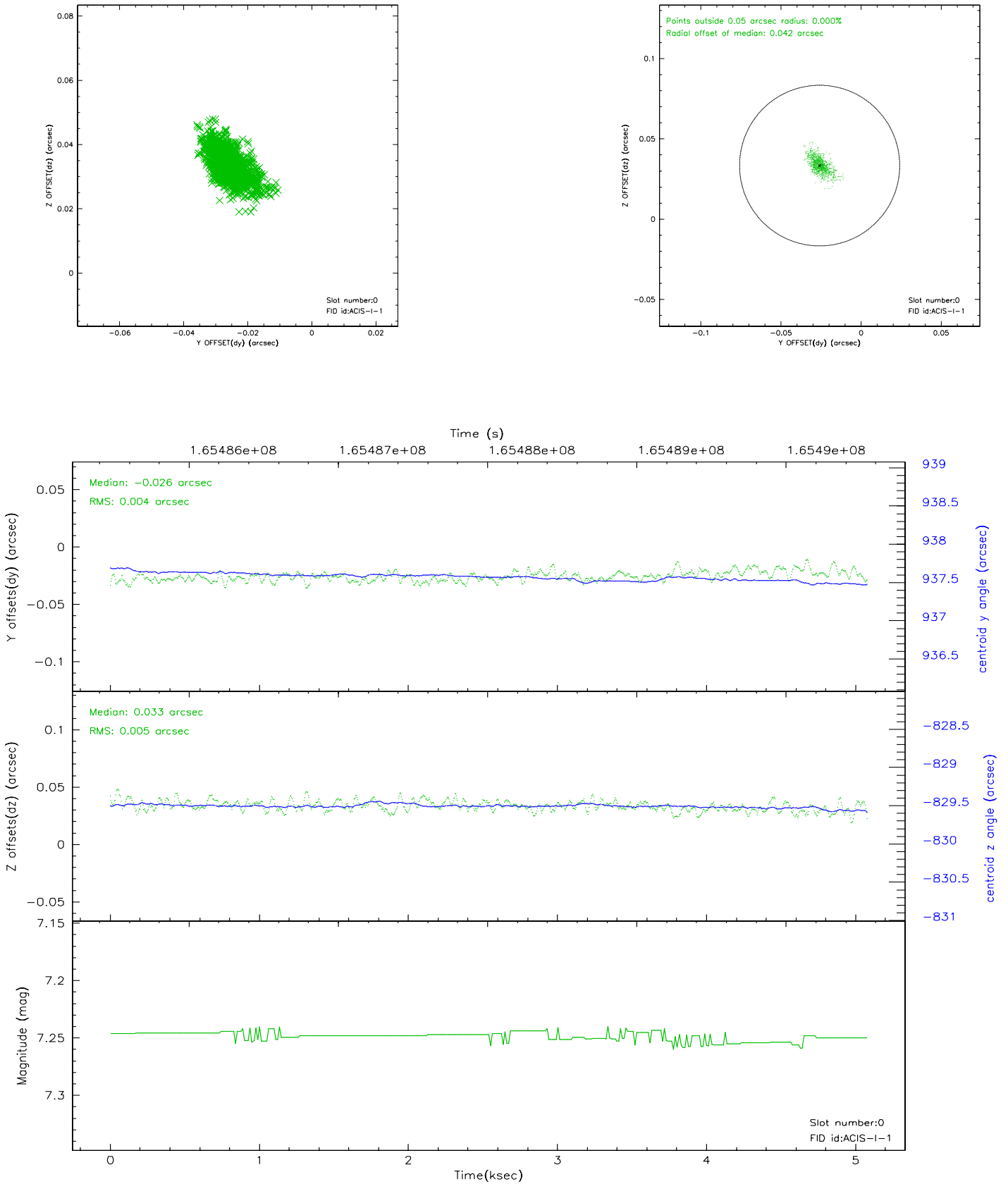


2.4.5 Slot 7

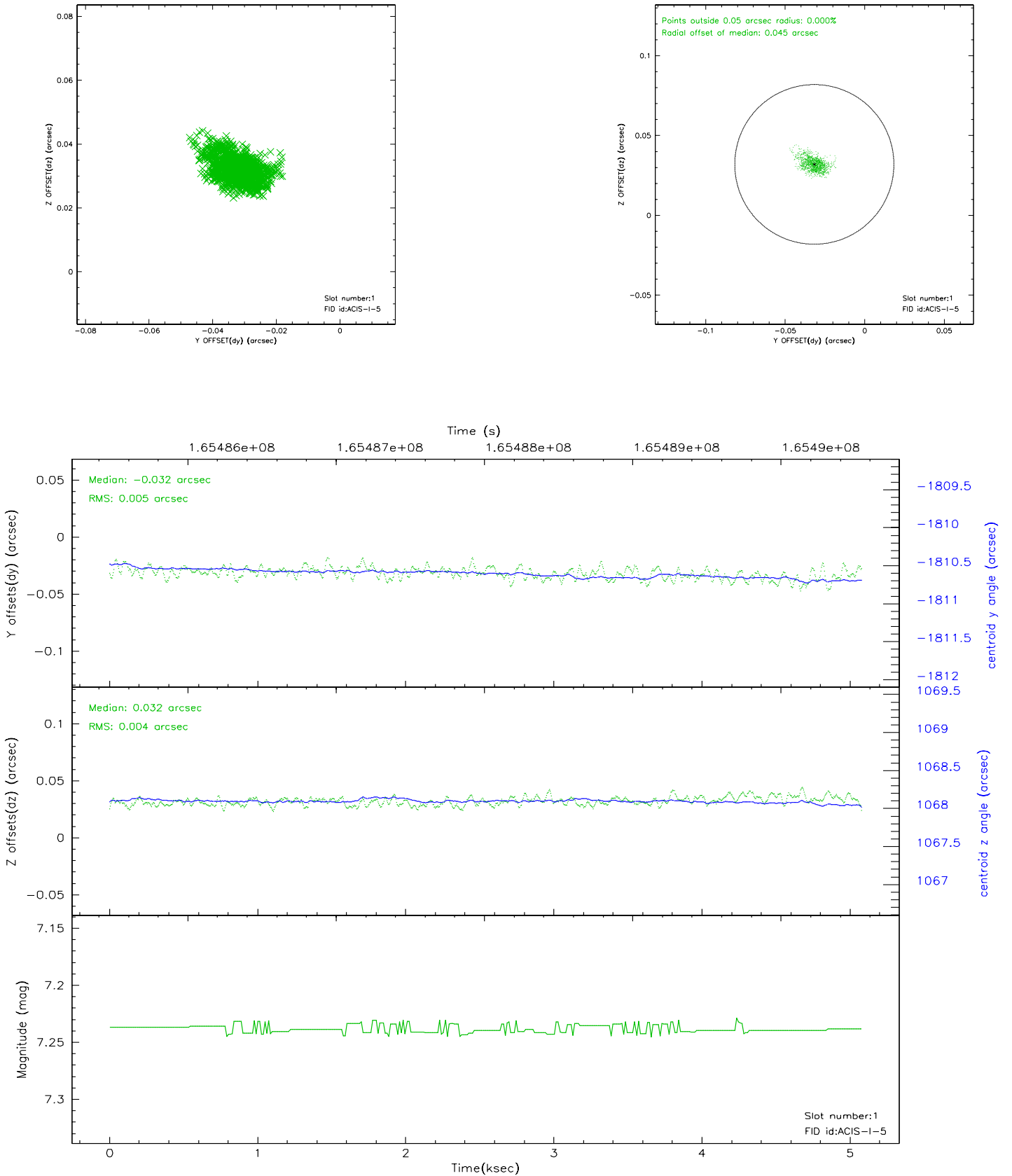


2.5 FID Slots

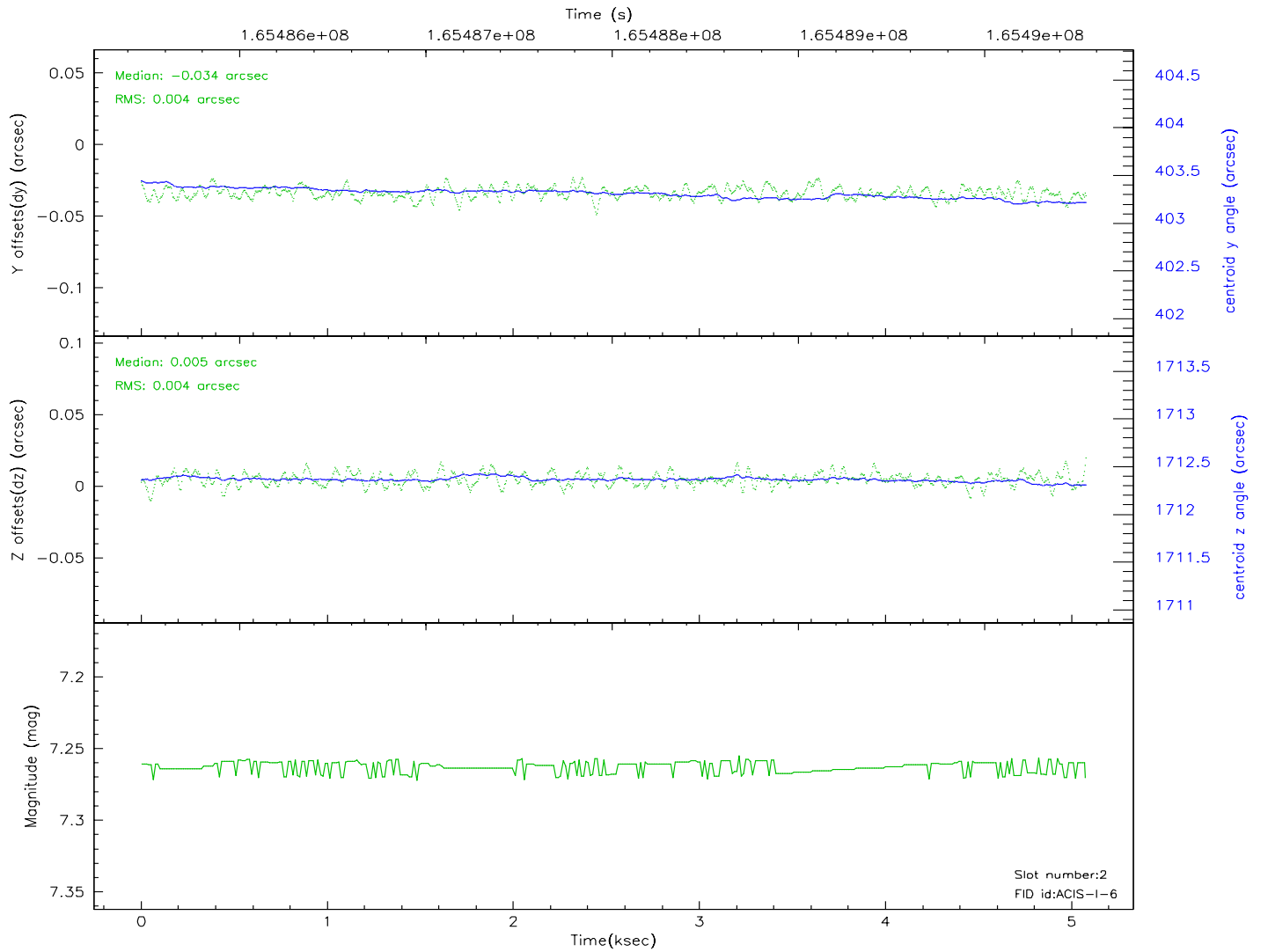
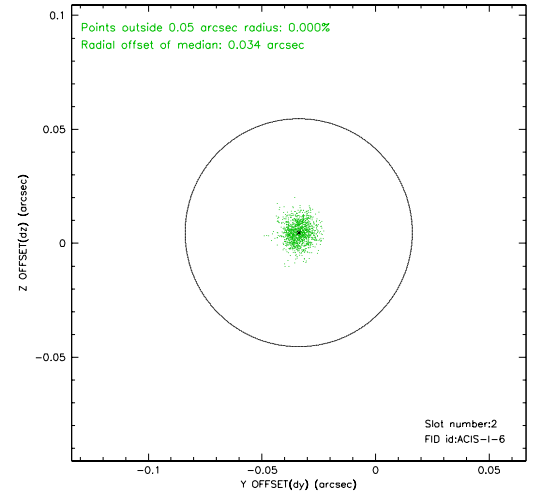
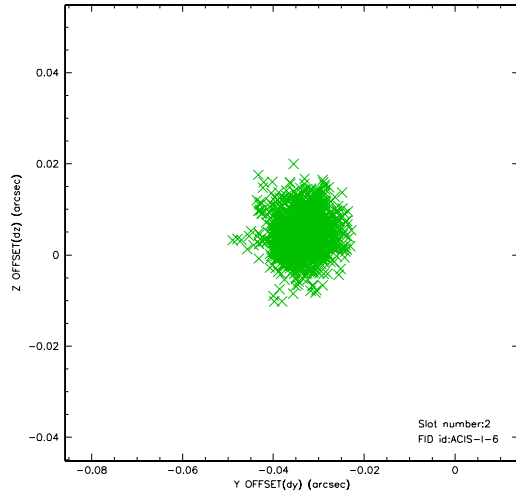
2.5.1 Slot 0



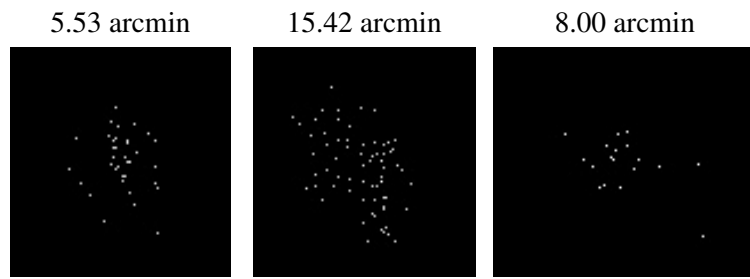
2.5.2 Slot 1



2.5.3 Slot 2



3 Point Sources



A Summary

A.1 Status

V&V Scientist	Jen Lauer
V&V Date (YYYY-MM-DD)	2006.07.30
V&V Edition	1
V&V Disposition and Status	OK
V&V Charge Time	4.677

A.2 Comments