

V&V Reference Report

L2 ASCDS Version : 7.6.8

Observation 4255 - L2 Version 001
Chandra X-Ray Center

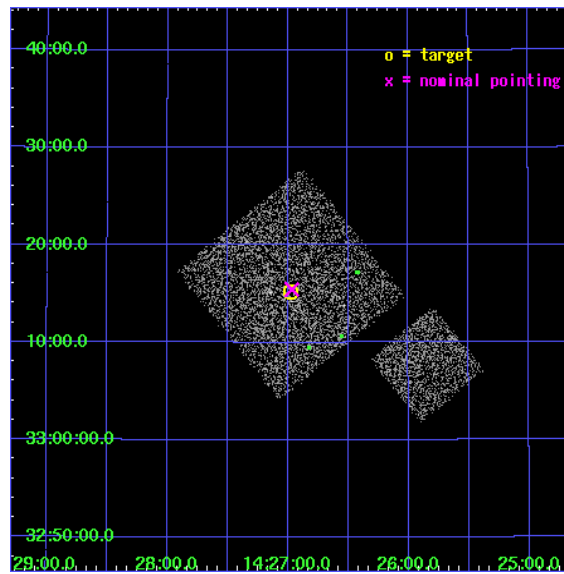
L2 Processing Date : Jul 29 2006

Contents

1	Front	2
2	OBI	3
2.1	OBI	3
2.1.1	Images	3
2.1.2	Bias	3
2.1.3	Parameters	4
2.1.4	Events	4
2.2	Compared Parameters	5
2.3	Aspect	6
2.4	Star Slots	9
2.4.1	Slot 3	9
2.4.2	Slot 4	10
2.4.3	Slot 5	11
2.4.4	Slot 6	12
2.4.5	Slot 7	13
2.5	FID Slots	14
2.5.1	Slot 0	14
2.5.2	Slot 1	15
2.5.3	Slot 2	16
3	Point Sources	17
A	Summary	18
A.1	Status	18
A.2	Comments	18

1 Front

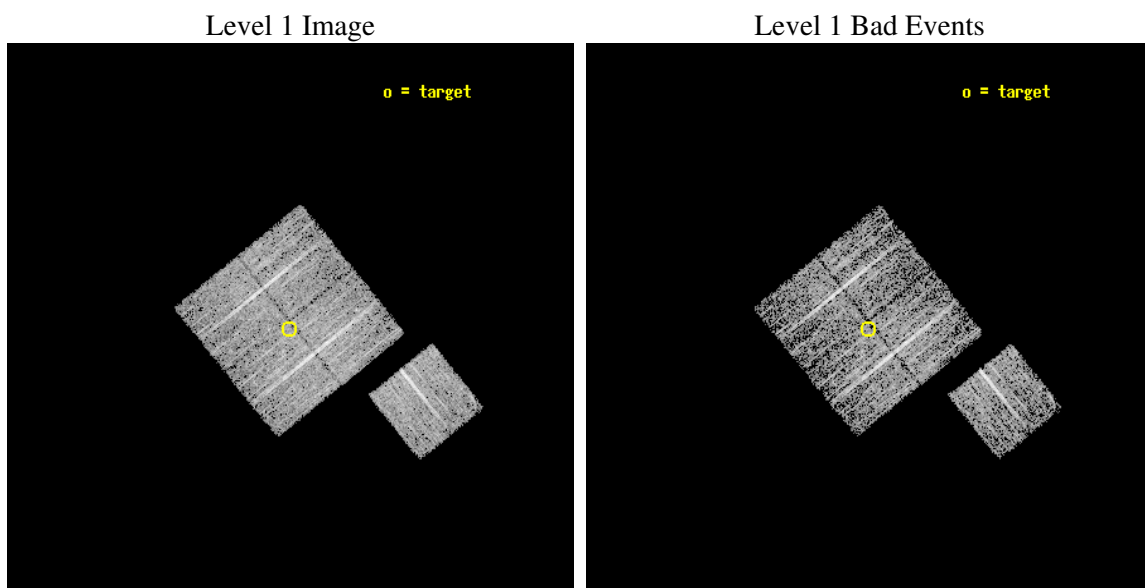
seq_num	900298
obs_id	4255
title	A CHANDRA WIDE-FIELD SURVEY TO MAP THE COSMIC WEB AND INVESTIGATE THE EVOLUTION OF NUCLEAR ACCRETION
observer	Dr. Christine Jones
object	SD30
dtcycle	0
cycle	P
ra_targ	216.744263
dec_targ	33.253224
ra_nom	216.74163157521
dec_nom	33.257407577958
roll_nom	141.01023997014
revision	2
ontime	5018.89999035
livetime	4953.3243671157
ontime0	5018.89999035
ontime1	5015.7590101063
ontime2	5018.89999035
ontime3	5018.89999035
ontime6	5015.7590001822
l2events	10184



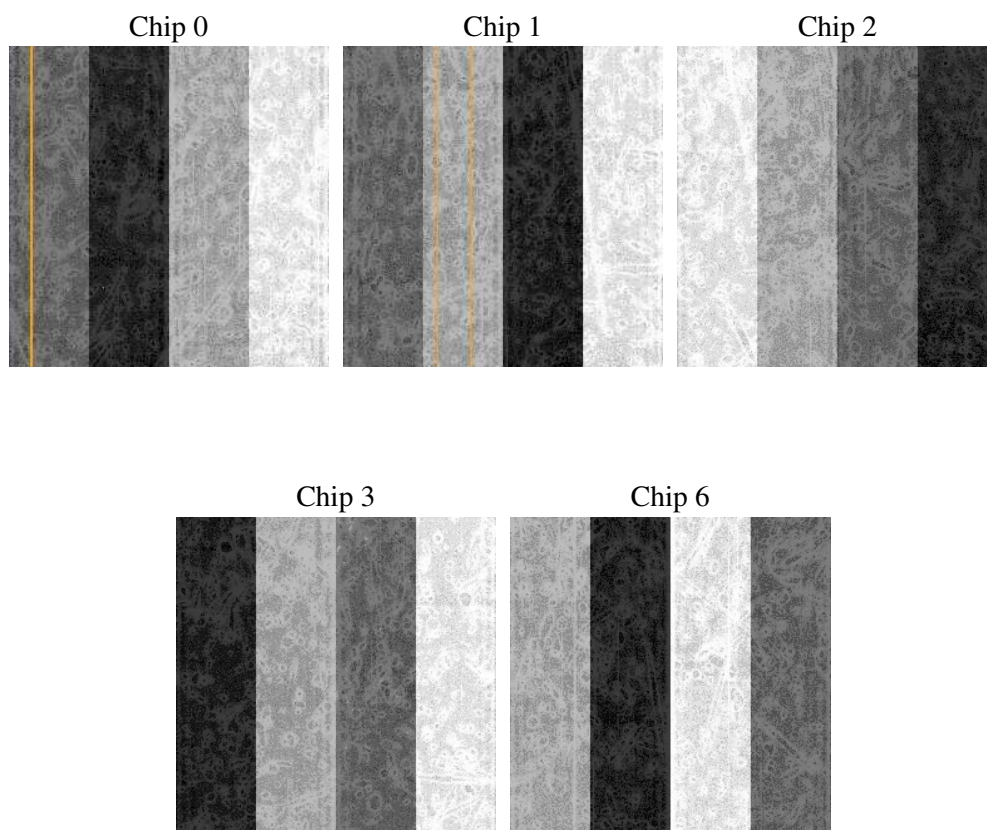
2 OBI

2.1 OBI

2.1.1 Images



2.1.2 Bias



2.1.3 Parameters

obi_num	0
ascdsver	7.6.8
caldbver	3.2.2
date	2006-07-29T16:54:03
revision	2

sched_exp_time	4900.000000
ontime	5022.471731931
ontime0	5022.471731931
ontime1	5019.330771625
ontime2	5022.471731931
ontime3	5022.471731931
ontime6	5019.3307417631
l1events	121030

2.1.4 Events

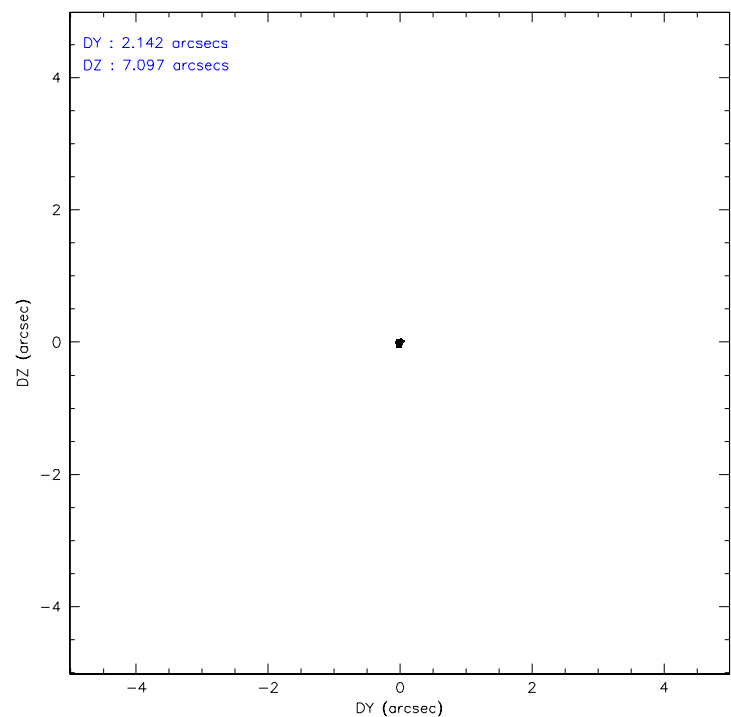
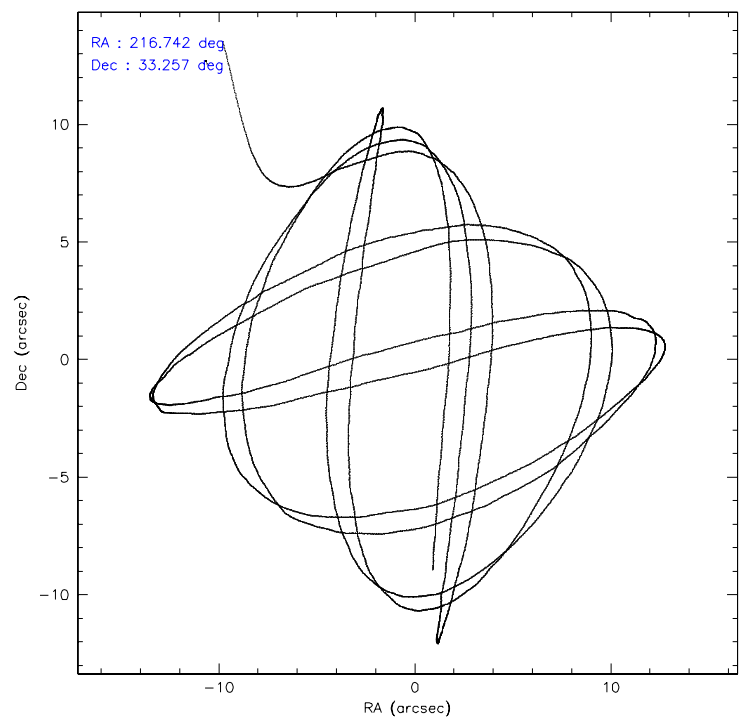
	ccd 0	ccd 1	ccd 2	ccd 3	ccd 6
level 1 events	22782	21938	26290	24731	25289
rejected events	20396	19387	23772	22336	22745
rejected %	89%	88%	90%	90%	89%

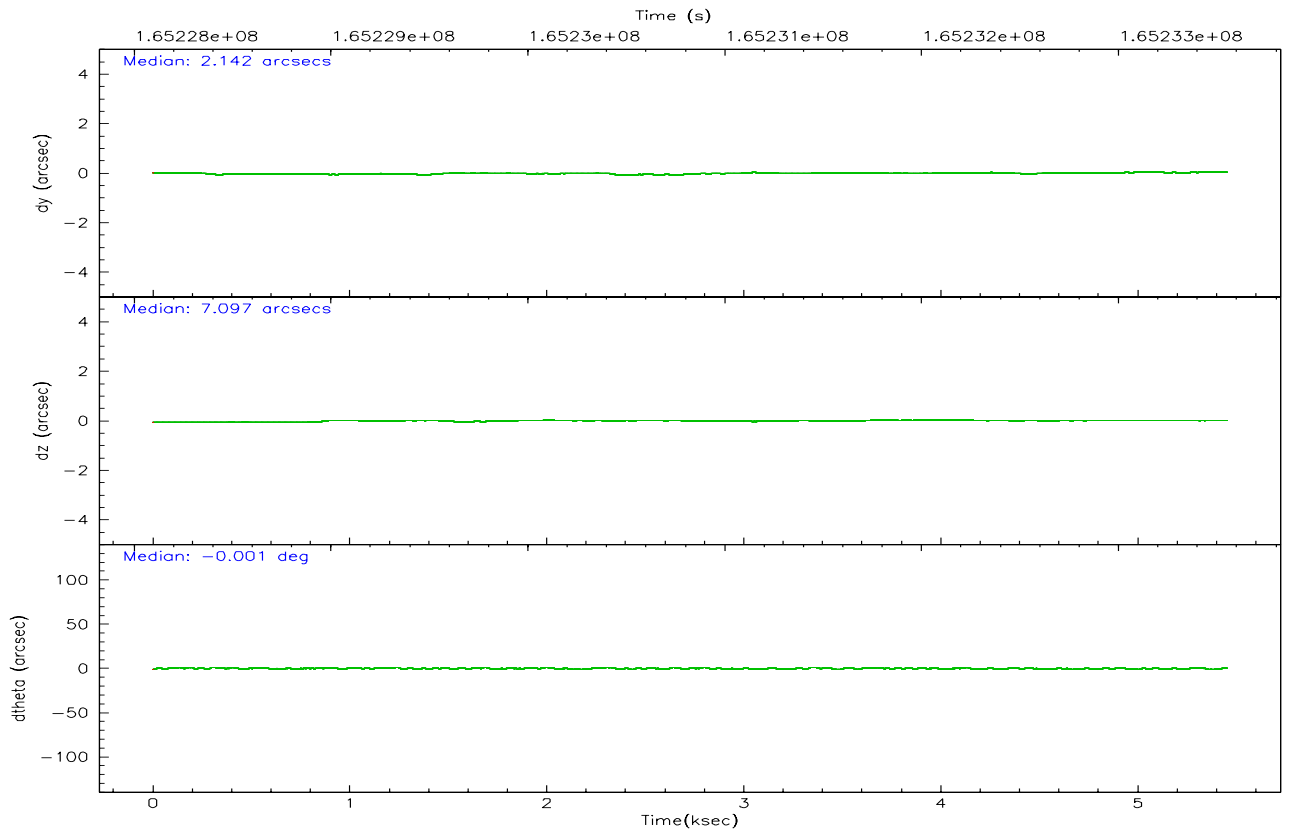
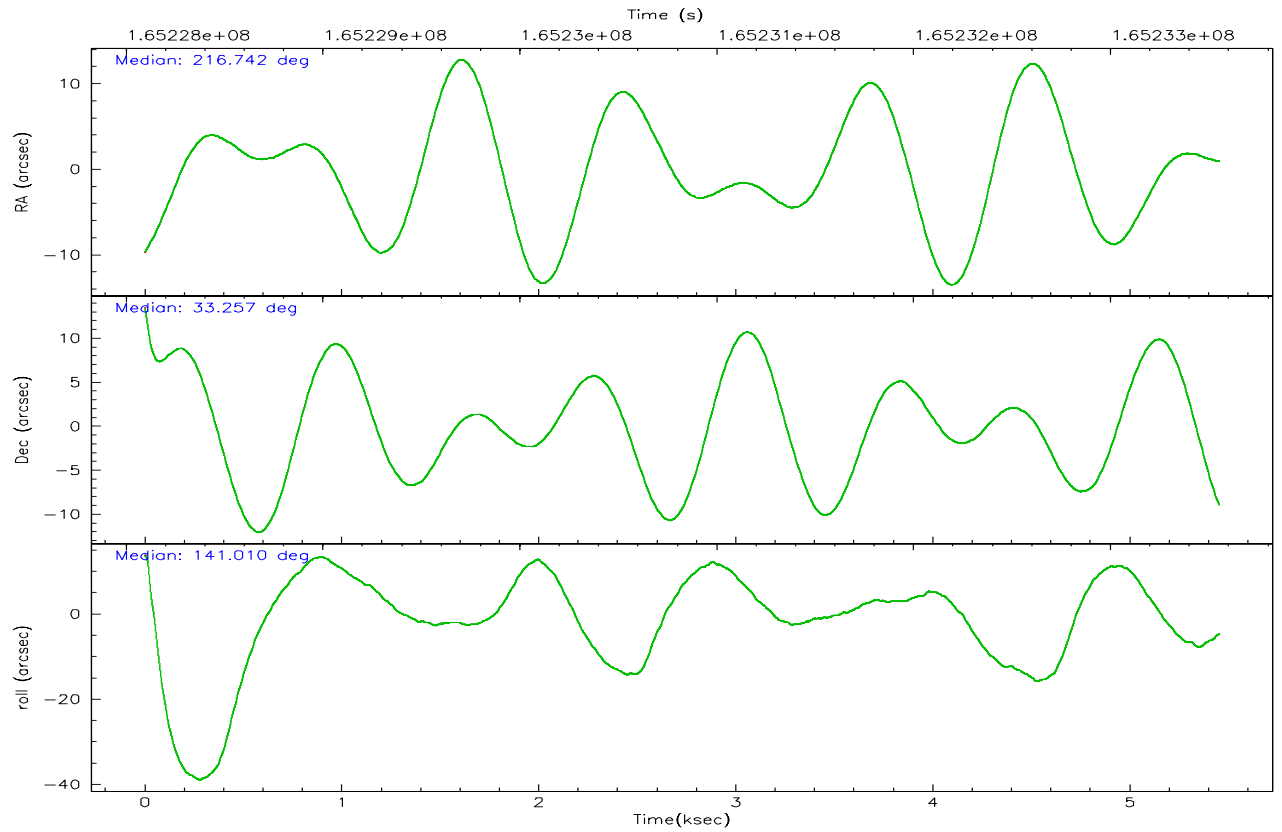
	ccd 0	ccd 1	ccd 2	ccd 3	ccd 6
grade 0 events	872	977	1019	928	928
	3%	4%	3%	3%	3%
grade 1 events	16	10	9	13	4
	0%	0%	0%	0%	0%
grade 2 events	548	509	524	503	555
	2%	2%	1%	2%	2%
grade 3 events	303	297	282	275	258
	1%	1%	1%	1%	1%
grade 4 events	237	275	283	274	273
	1%	1%	1%	1%	1%
grade 5 events	699	777	676	782	821
	3%	3%	2%	3%	3%
grade 6 events	430	497	412	418	532
	1%	2%	1%	1%	2%
grade 7 events	19677	18596	23085	21538	21918
	86%	84%	87%	87%	86%

2.2 Compared Parameters

Parameter	Planned	Actual	Parameter	Planned	Actual
Instrument	ACIS	ACIS	Obspar format version number	6	6
Detector	ACIS-01236	ACIS-01236	Obspar file type	PREDICTED	ACTUAL
Grating	NONE	NONE	Obspar update status	NONE	UPDATED
Data mode	VFAINT	VFAINT	On-chip summing requested	N	N
Observation mode	POINTING	POINTING	Subarray requested	NONE	NONE
Pointing RA	216.774023	216.7416315752059	Alternating exposures requested	N	N
Pointing Dec	33.253147	33.25740757795771	Primary exposure time	0.000000	3.1
Pointing Roll	140.783682	141.0102399701358			
SIM focus pos (mm)	-0.782348	-0.7809083437167272			
SIM defocus (mm)	0	0.001439871863259334			
SIM translation stage pos (mm)	-233.592463	-233.5874344608287			
SIM translation stage offset (mm)	0	-0.005018542100998502			
Observation start time	165228650.184000	165227508.19307			
Observation start date	2003-03-28T08:49:46	2003-03-28T08:31:48			
Observation end time	165233550.184000	165233684.84333			
Observation end date	2003-03-28T10:11:26	2003-03-28T10:14:44			
Read mode	TIMED	TIMED			

2.3 Aspect



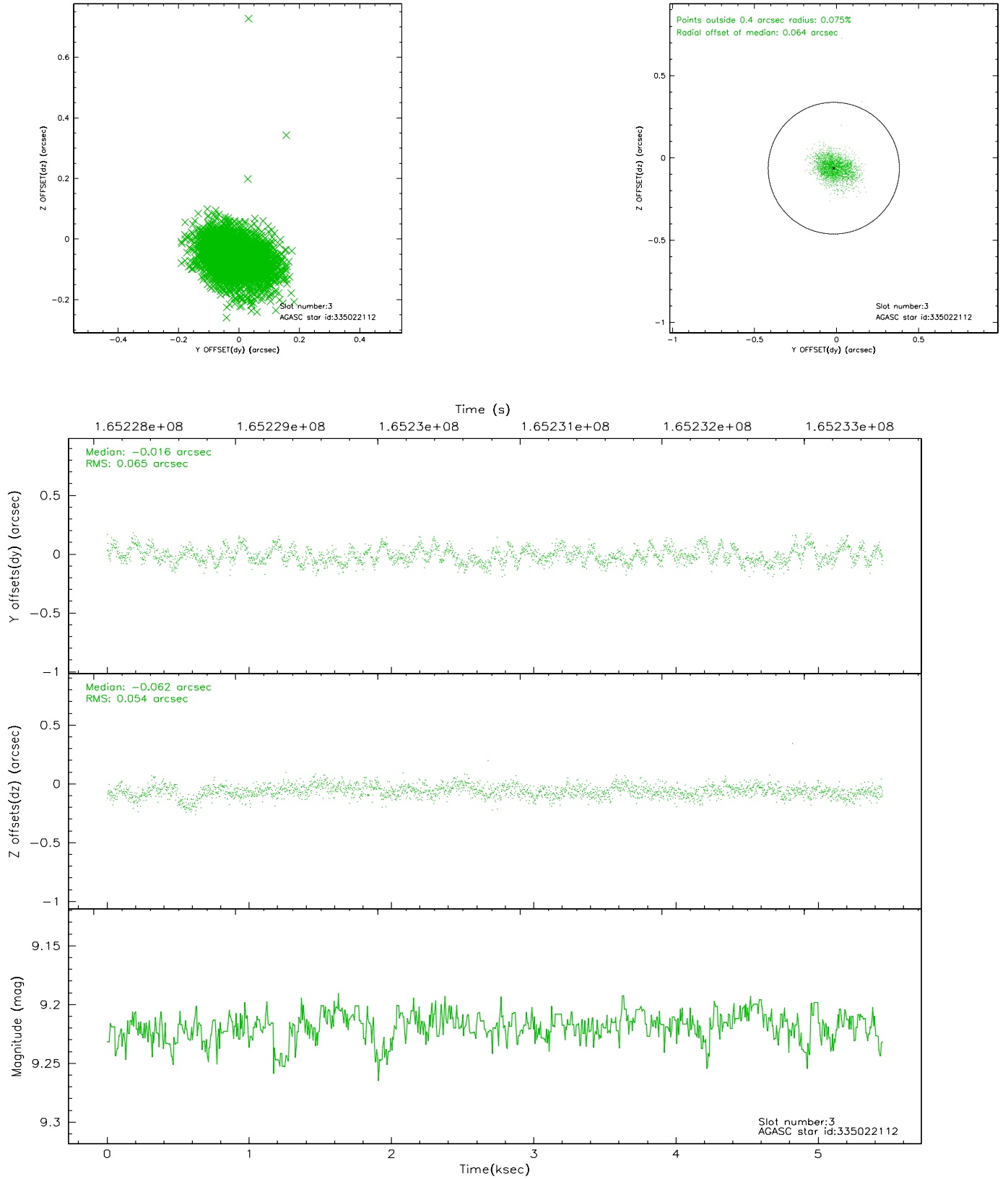


Slot Statistics

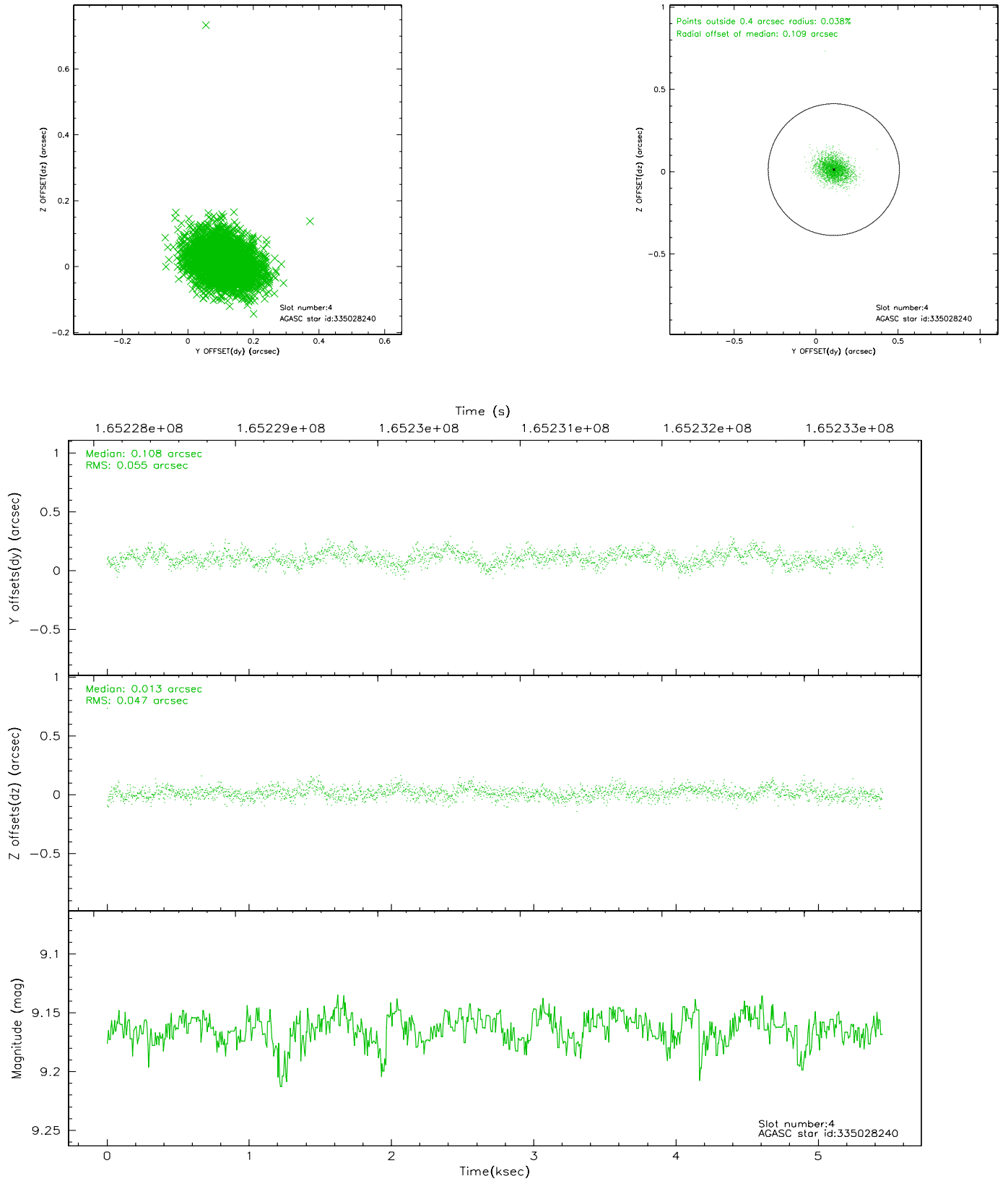
slot	status	id	mag	n_pts	med_dy	med_dz	dr1	dr2	ra	dec	mean_y	mean_z
0	FID	ACIS-I-1	7.25	1331	-0.015	0.044	0.006	0.010	0.000000	0.000000	937.65	-830.46
1	FID	ACIS-I-5	7.24	1331	-0.040	0.044	0.006	0.010	0.000000	0.000000	-1809.83	1066.54
2	FID	ACIS-I-6	7.26	1331	-0.037	-0.018	0.007	0.011	0.000000	0.000000	402.03	1712.18
3	GUIDE	335022112	9.22	2661	-0.016	-0.062	0.088	0.145	216.659296	32.794758	-774.60	1498.39
4	GUIDE	335028240	9.16	2661	0.108	0.013	0.075	0.125	216.746851	33.385009	363.27	-315.06
5	GUIDE	335029368	10.16	2658	0.012	0.203	0.122	0.202	217.181018	33.065030	-1378.03	-252.98
6	GUIDE	335029808	9.07	2659	0.001	-0.120	0.067	0.110	216.789548	33.180488	-202.27	173.34
7	GUIDE	335030152	9.72	2647	-0.107	-0.031	0.112	0.179	216.202154	33.091054	969.94	1539.47

2.4 Star Slots

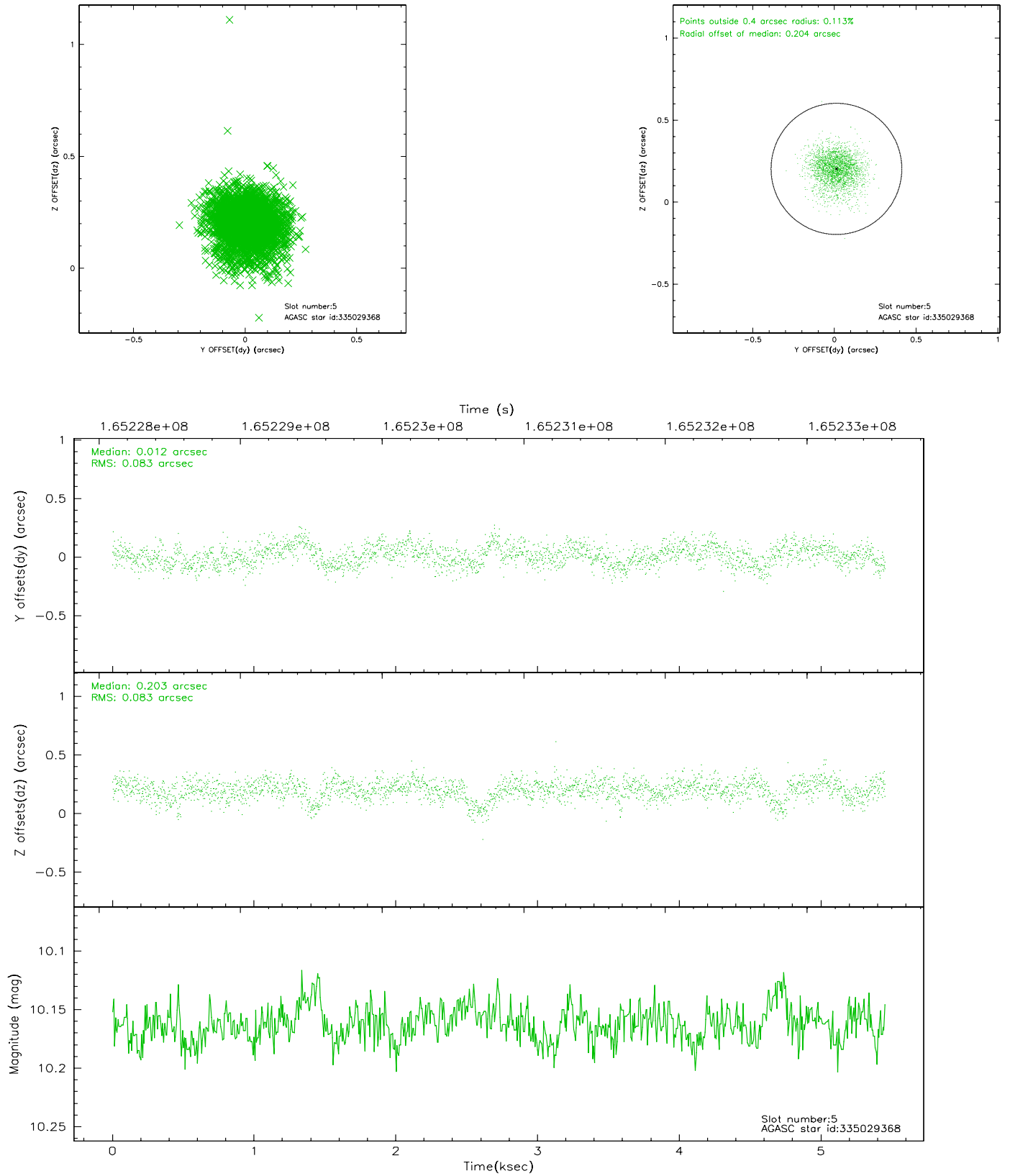
2.4.1 Slot 3



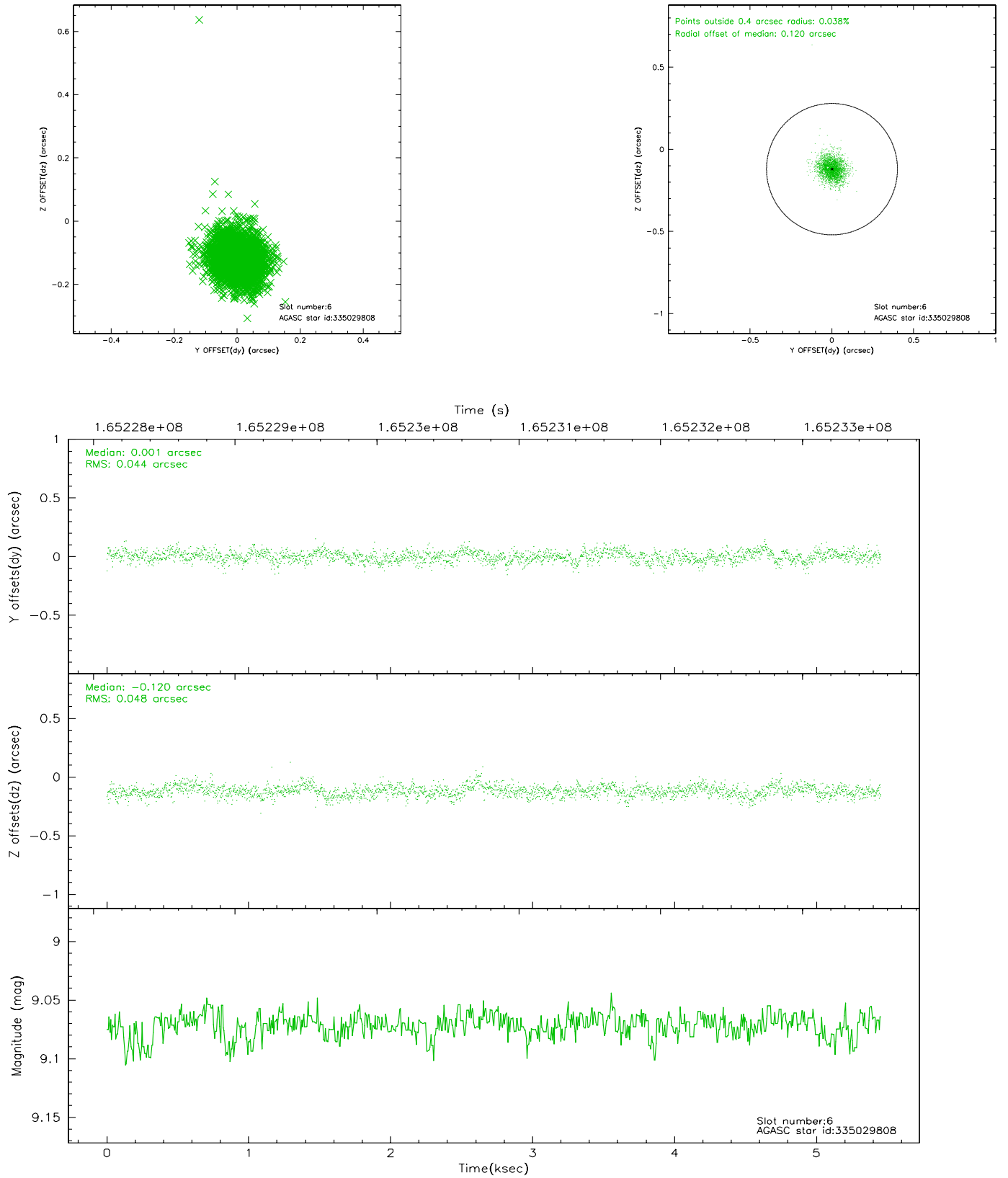
2.4.2 Slot 4



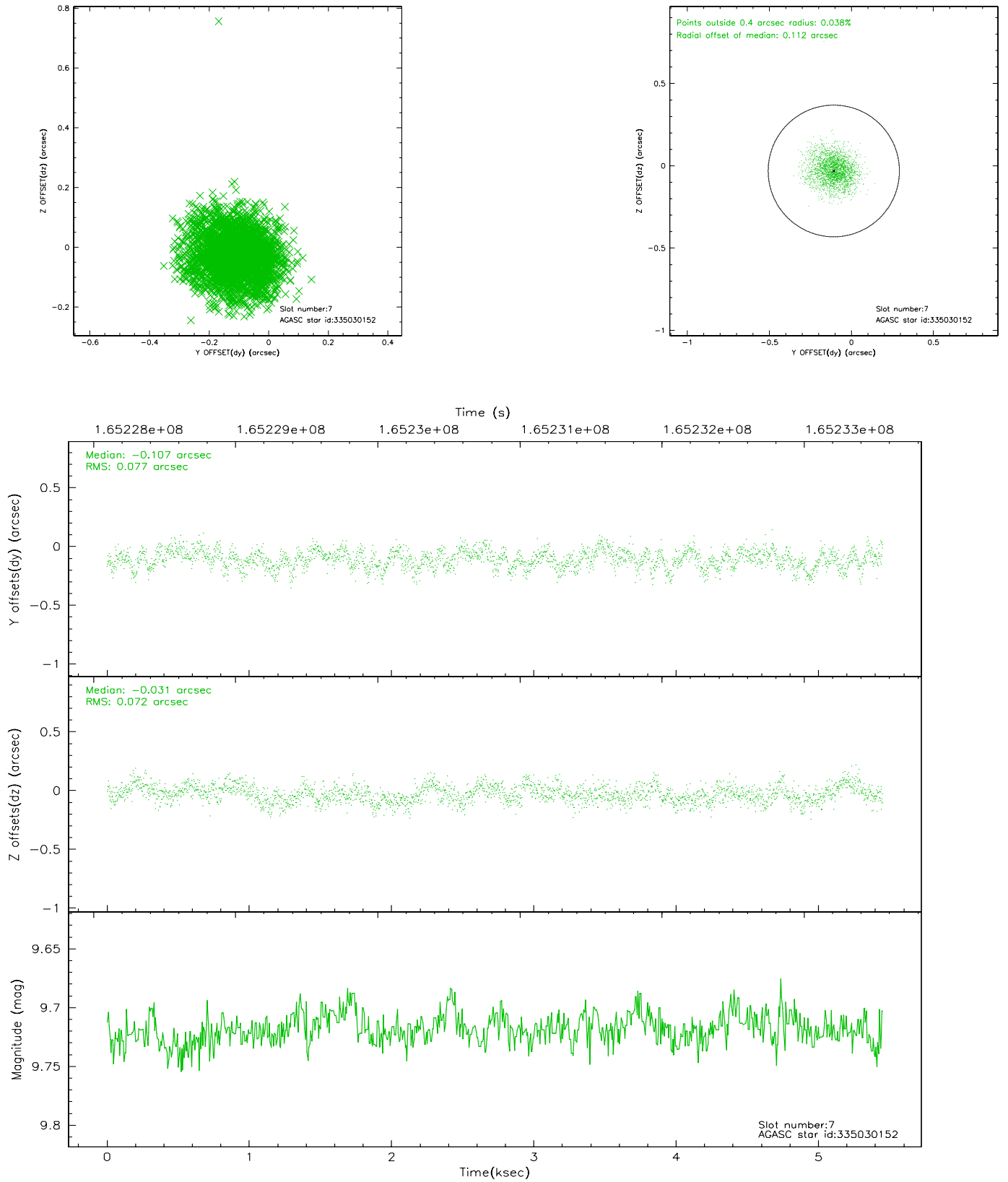
2.4.3 Slot 5



2.4.4 Slot 6

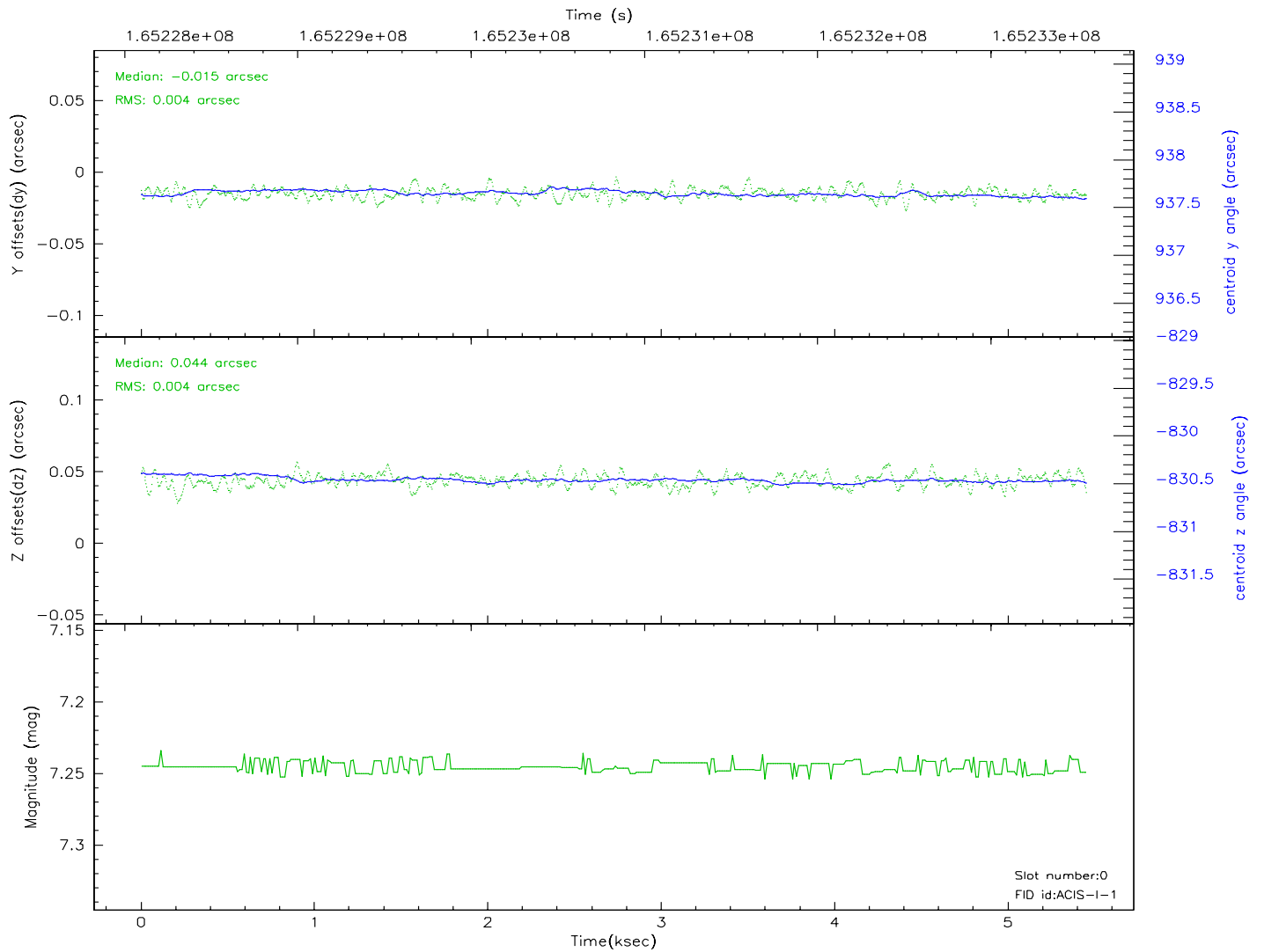
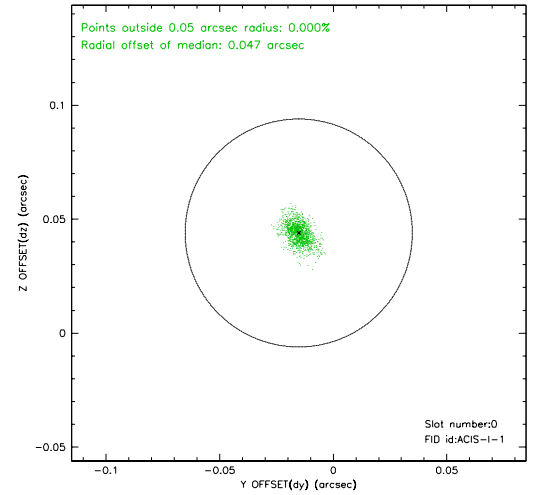
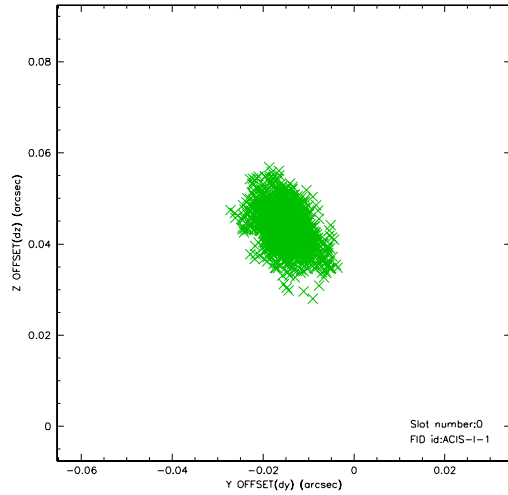


2.4.5 Slot 7

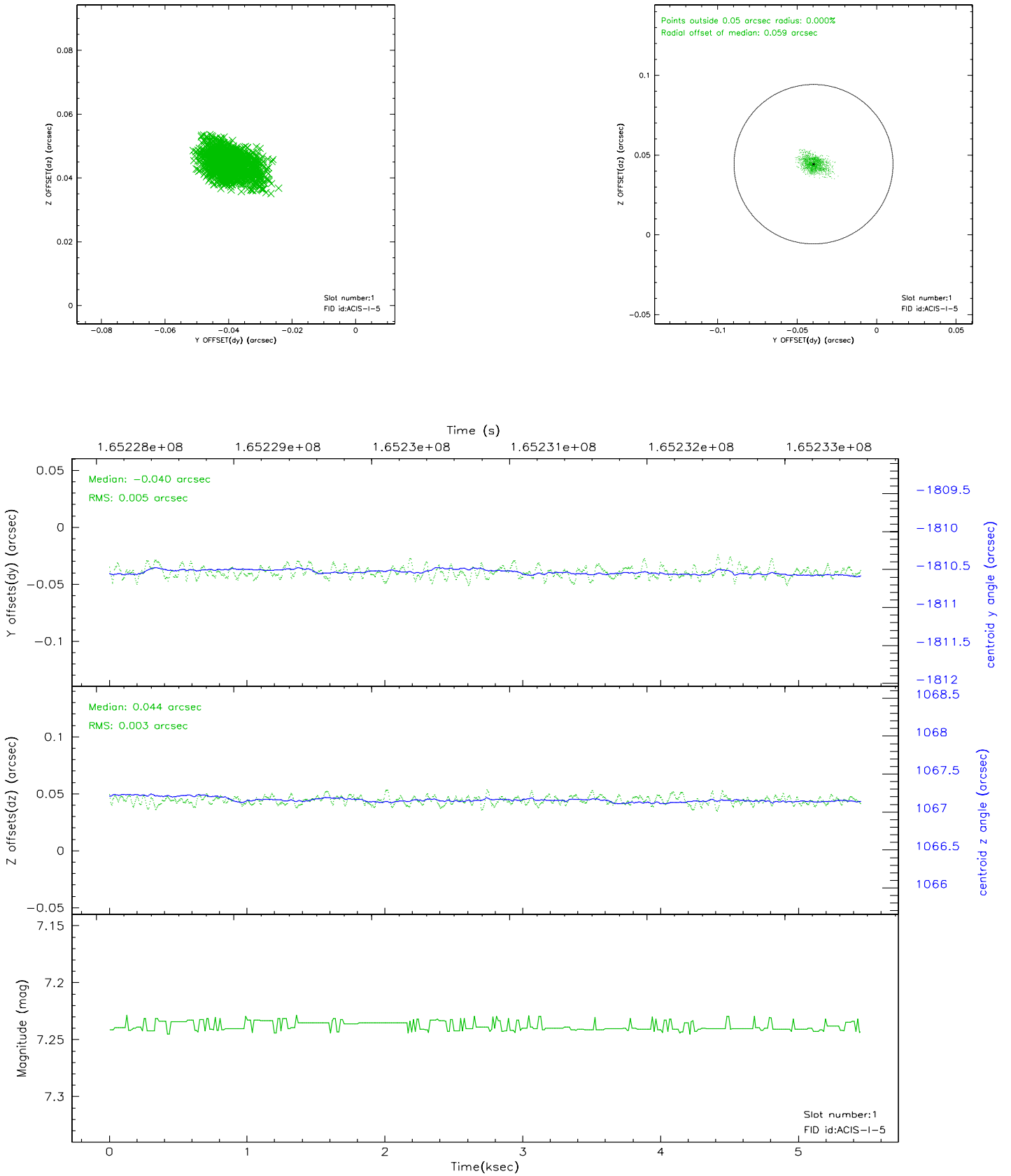


2.5 FID Slots

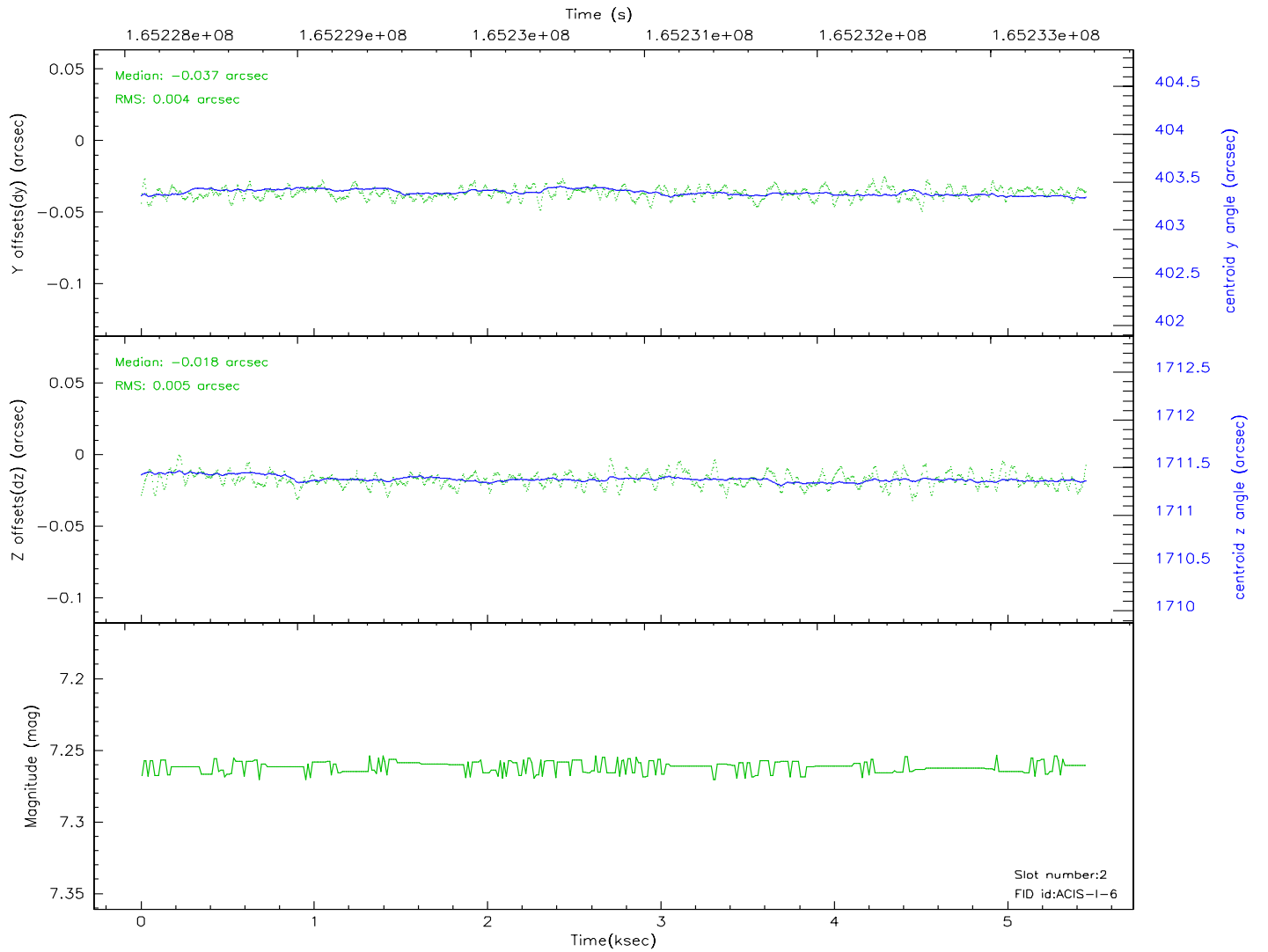
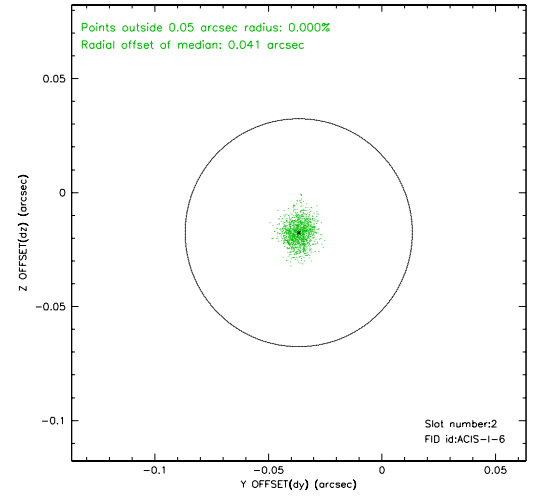
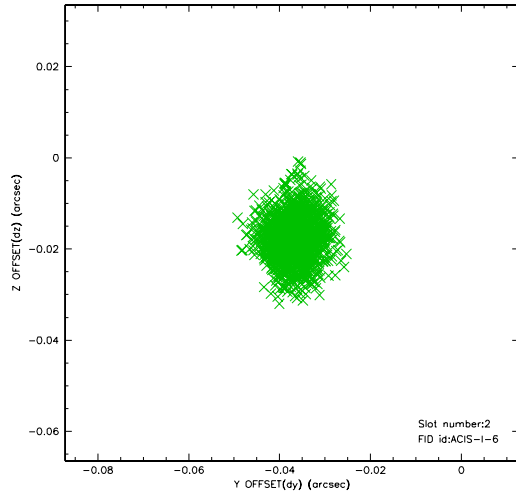
2.5.1 Slot 0



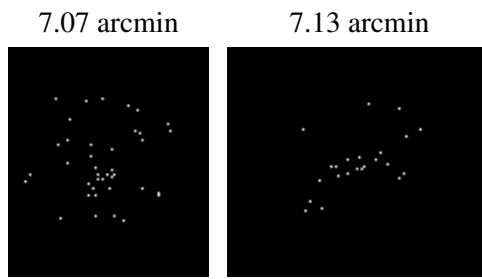
2.5.2 Slot 1



2.5.3 Slot 2



3 Point Sources



A Summary

A.1 Status

V&V Scientist	Jen Lauer
V&V Date (YYYY-MM-DD)	2006.07.30
V&V Edition	1
V&V Disposition and Status	OK
V&V Charge Time	5.022

A.2 Comments