

V&V Reference Report

L2 ASCDS Version : 8.4.5

Observation 4055 - L2 Version 3
Chandra X-Ray Center

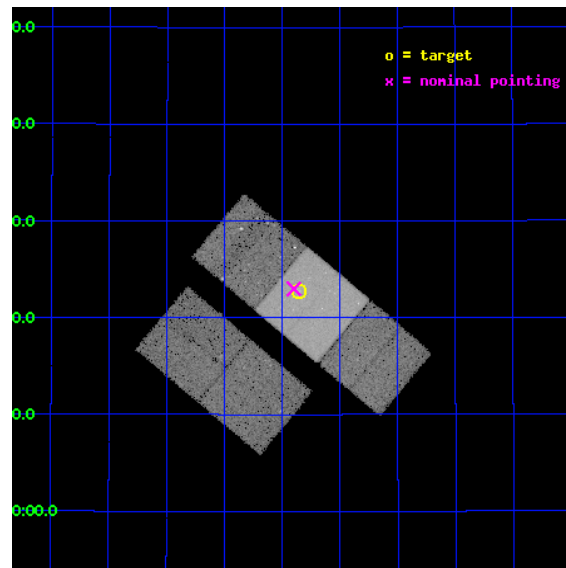
L2 Processing Date : Nov 8 2012

Contents

1	Front	2
2	OBI	3
2.1	OBI	3
2.1.1	Images	3
2.1.2	Bias	3
2.1.3	Parameters	4
2.1.4	Events	4
2.2	Compared Parameters	5
2.3	Aspect	6
2.4	Star Slots	9
2.4.1	Slot 3	9
2.4.2	Slot 4	10
2.4.3	Slot 5	11
2.4.4	Slot 6	12
2.4.5	Slot 7	13
2.5	FID Slots	14
2.5.1	Slot 0	14
2.5.2	Slot 1	15
2.5.3	Slot 2	16
A	Summary	17
A.1	Status	17
A.2	Comments	17

1 Front

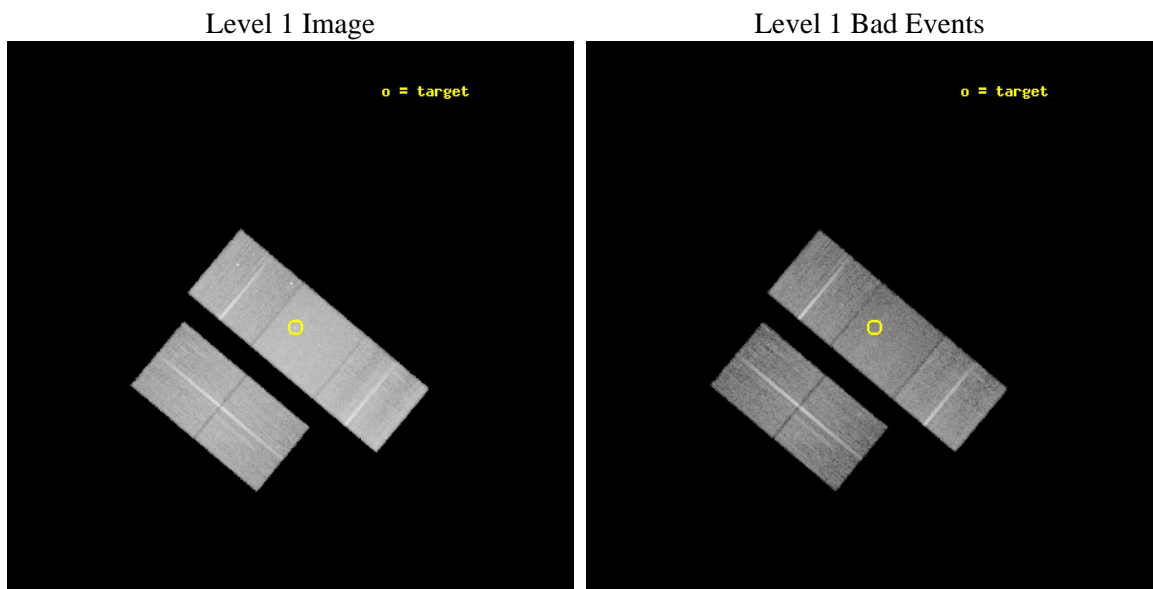
seq_num	700734	Sequence number
obs_id	4055	Observation id
title	CHANDRA OBSERVATIONS OF A UNIFORM SAMPLE OF FRI GALAXIES	Proposal
observer	Dr. Rita Sambruna	Principal investigator
object	1322+36	Source name
dtcycle	0	
cycle	P	events from which exps? Prim/Second/Both
ra_targ	201.214167	Observer's specified target RA [deg]
dec_targ	36.378333	Observer's specified target Dec [deg]
ra_nom	201.22458787758	Nominal RA [deg]
dec_nom	36.3831486271	Nominal Dec [deg]
roll_nom	39.915511309558	Nominal Roll [deg]
revision	3	Processing version of data
ontime	30971.922334969	Sum of GTIs [s]
livetime	30567.251368465	Livetime [s]
ontime2	30971.758174956	Sum of GTIs [s]
ontime3	30968.699284732	Sum of GTIs [s]
ontime6	30968.740324736	Sum of GTIs [s]
ontime7	30971.922334969	Sum of GTIs [s]
ontime8	30971.799214959	Sum of GTIs [s]
l2events	171517	Number of level 2 events



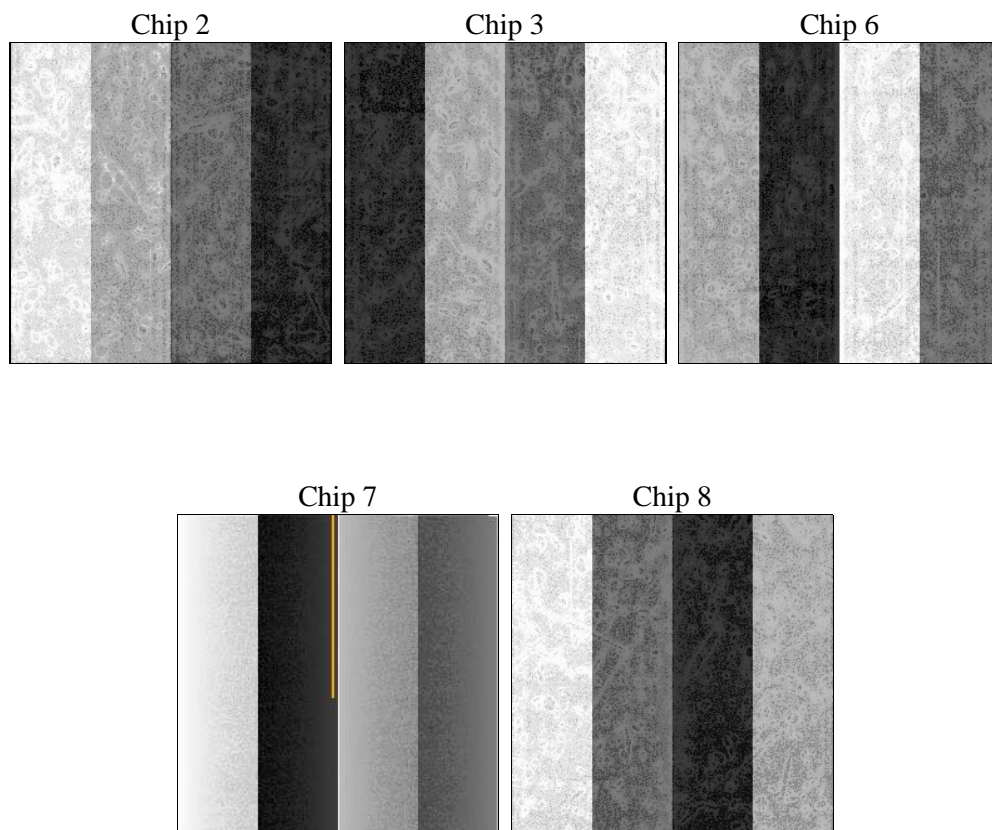
2 OBI

2.1 OBI

2.1.1 Images



2.1.2 Bias



2.1.3 Parameters

obi_num	4	Obi number	sched_exp_time	30864.000000	[s] Scheduled observation exposure time
ascdsver	8.4.5	Processing system revision	ontime	30971.922334969	Sum of GTIs [s]
caldsver	4.5.2	 	ontime2	30971.758174956	Sum of GTIs [s]
date	2012-11-08T03:19:08	Date and time of file creation	ontime3	30968.699284732	Sum of GTIs [s]
revision	3	Processing version of data	ontime6	30968.740324736	Sum of GTIs [s]
			ontime7	30971.922334969	Sum of GTIs [s]
			ontime8	30971.799214959	Sum of GTIs [s]
			l1events	897181	Number of level 1 events

2.1.4 Events

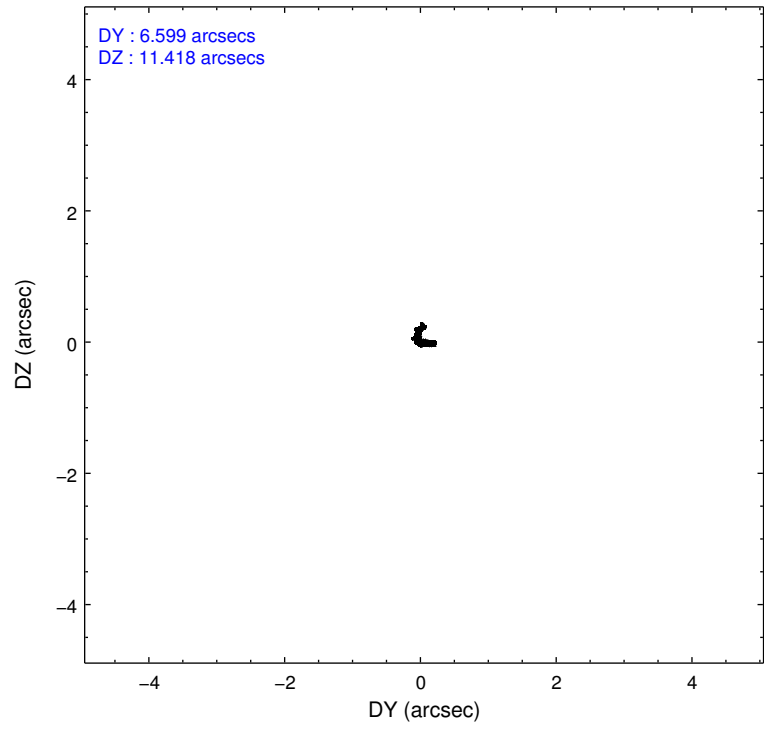
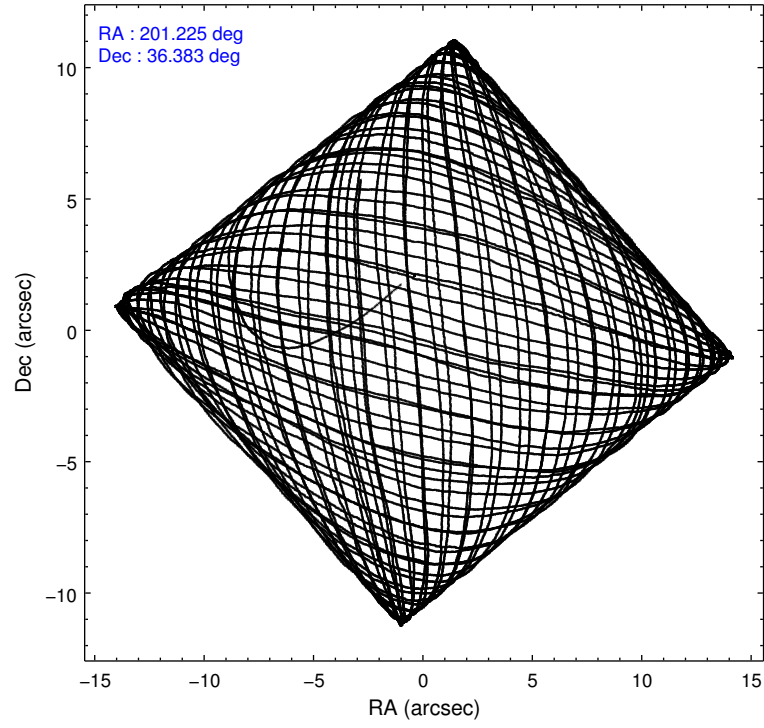
	ccd 2	ccd 3	ccd 6	ccd 7	ccd 8
level 1 events	146919	148922	163632	222647	215061
rejected events	126699	129339	140493	124711	158040
rejected %	86%	86%	85%	56%	73%

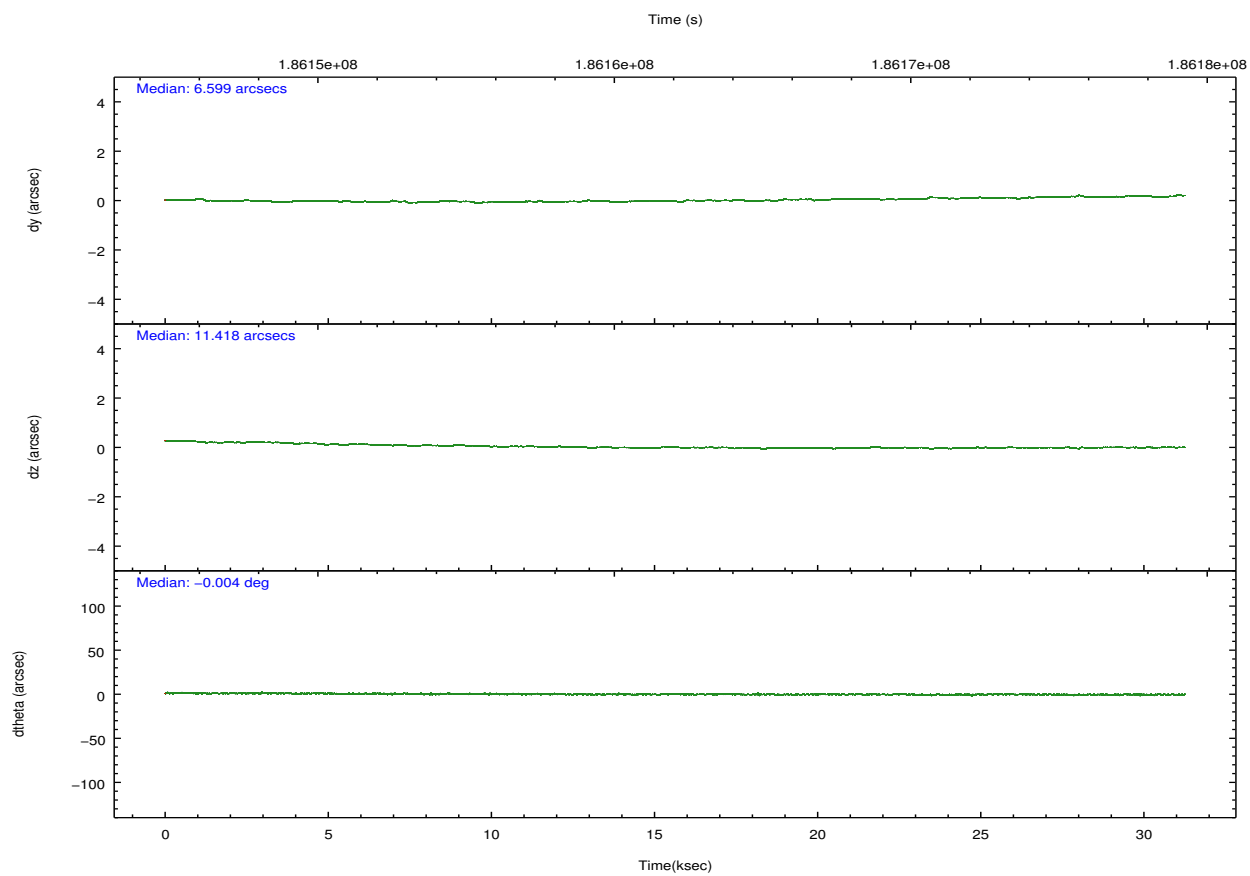
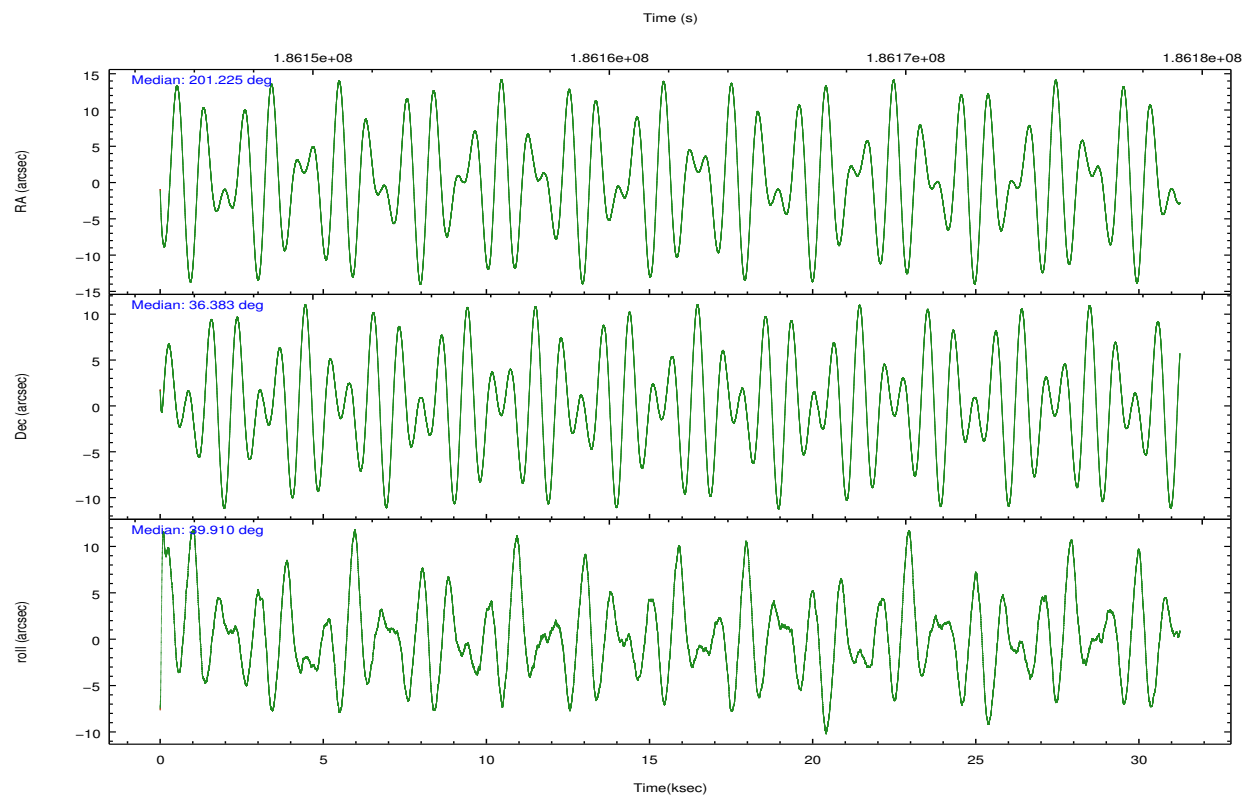
	ccd 2	ccd 3	ccd 6	ccd 7	ccd 8
grade 0 events	9272	8661	10529	10058	18606
	6%	5%	6%	4%	8%
grade 1 events	81	79	76	183	152
	0%	0%	0%	0%	0%
grade 2 events	4077	3861	4639	19292	10894
	2%	2%	2%	8%	5%
grade 3 events	1774	1783	1924	8459	7178
	1%	1%	1%	3%	3%
grade 4 events	1791	1827	1898	8613	6534
	1%	1%	1%	3%	3%
grade 5 events	5936	6815	7221	20040	9715
	4%	4%	4%	9%	4%
grade 6 events	3307	3455	4154	51524	13813
	2%	2%	2%	23%	6%
grade 7 events	120681	122441	133191	104478	148169
	82%	82%	81%	46%	68%

2.2 Compared Parameters

Parameter	Planned	Actual	Parameter	Planned	Actual
Instrument	ACIS	ACIS	Obspar format version number	7	7
Detector	ACIS-23678	ACIS-23678	Obspar file type	PREDICTED	ACTUAL
Grating	NONE	NONE	Obspar update status	NONE	UPDATED
Data mode	VFAINT	VFAINT	Number of optional ACIS chips dropped	0	0
Observation mode	POINTING	POINTING	On-chip summing requested	N	N
[deg] Pointing RA	201.213408	201.2245878775826	Subarray requested	NONE	NONE
[deg] Pointing Dec	36.357438	36.38314862709992	Alternating exposures requested	N	N
[deg] Pointing Roll	39.765523	39.91551130955768	[s] Primary exposure time	0.000000	3.1
[mm] SIM focus pos	-0.684267	-0.6828225247311905			
[mm] SIM defocus	0	0.001444936568705701			
[mm] SIM translation stage pos	-190.132523	-190.1400660498719			
[mm] SIM translation stage offset	0	0.00754346686406393			
[s] Observation start time (MET)	186146810.184000	186145748.0359			
Observation start date	2003-11-25T11:25:46	2003-11-25T11:09:08			
[s] Observation end time (MET)	186177674.184000	186178494.22482			
Observation end date	2003-11-25T20:00:10	2003-11-25T20:14:54			
Read mode	TIMED	TIMED			

2.3 Aspect



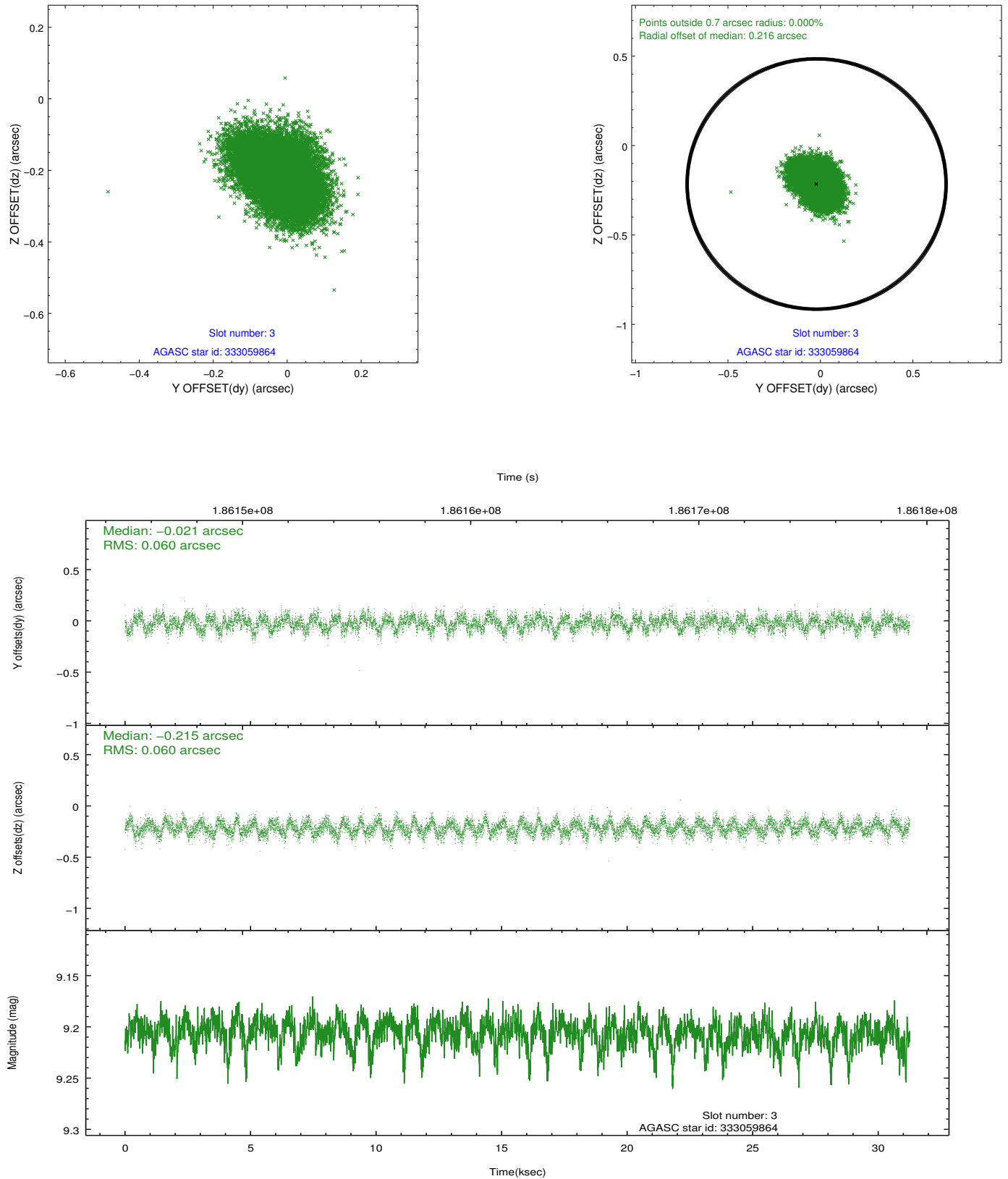


Slot Statistics

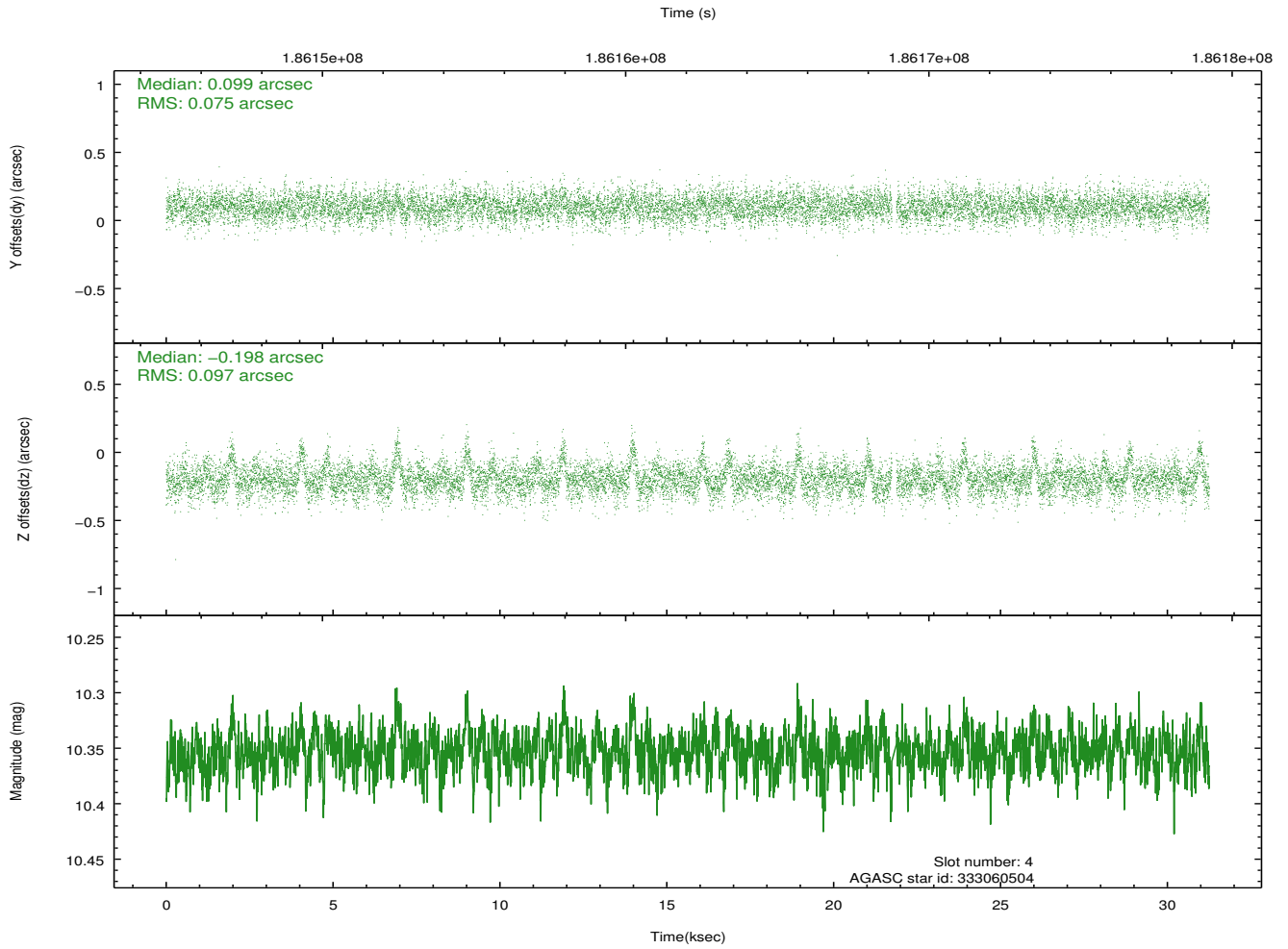
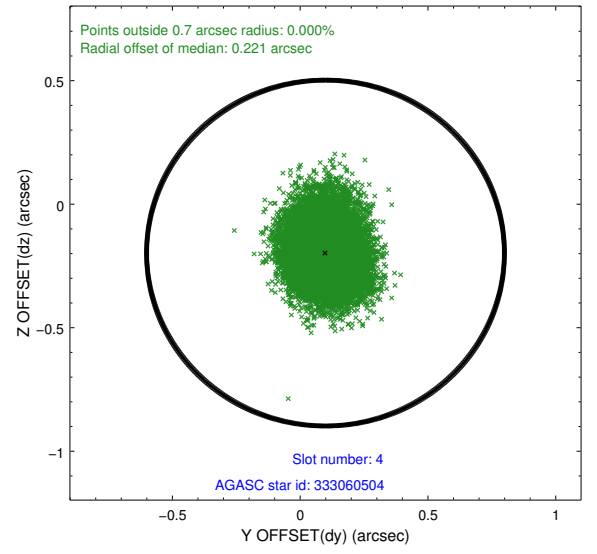
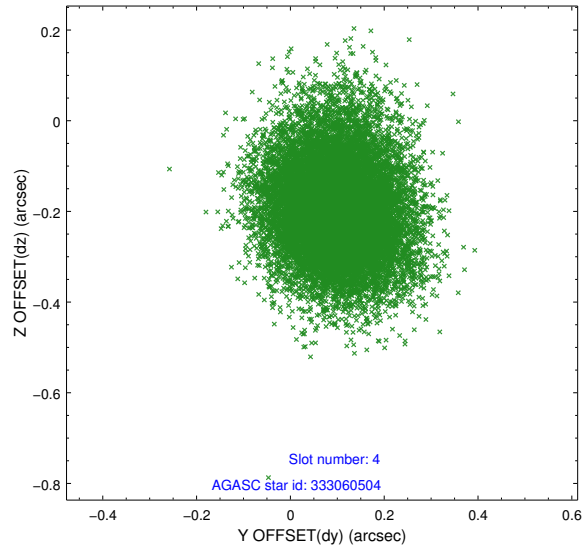
slot	status	id	mag	n_pts	med_dy	med_dz	dr1	dr2	ra	dec	mean_y	mean_z
0	FID	ACIS-S-1	7.18	7624	0.008	-0.082	0.007	0.012	0.000000	0.000000	936.64	-1728.47
1	FID	ACIS-S-4	7.20	7624	0.032	0.057	0.007	0.011	0.000000	0.000000	2154.13	175.75
2	FID	ACIS-S-5	7.23	7622	-0.066	0.037	0.006	0.012	0.000000	0.000000	-1812.19	169.44
3	GUIDE	333059864	9.21	15241	-0.021	-0.215	0.090	0.145	200.429616	36.479596	-1456.74	1796.28
4	GUIDE	333060504	10.35	15159	0.099	-0.198	0.128	0.218	200.494560	36.597389	-1039.52	1998.76
5	GUIDE	333187744	9.82	15243	0.095	0.237	0.093	0.151	201.019159	35.591863	-2199.30	-1753.96
6	GUIDE	333191184	8.98	15243	-0.131	0.077	0.085	0.138	202.273563	36.311253	2268.61	-2081.63
7	GUIDE	333192336	9.69	15241	-0.042	0.094	0.097	0.160	201.794441	36.406177	1409.83	-937.73

2.4 Star Slots

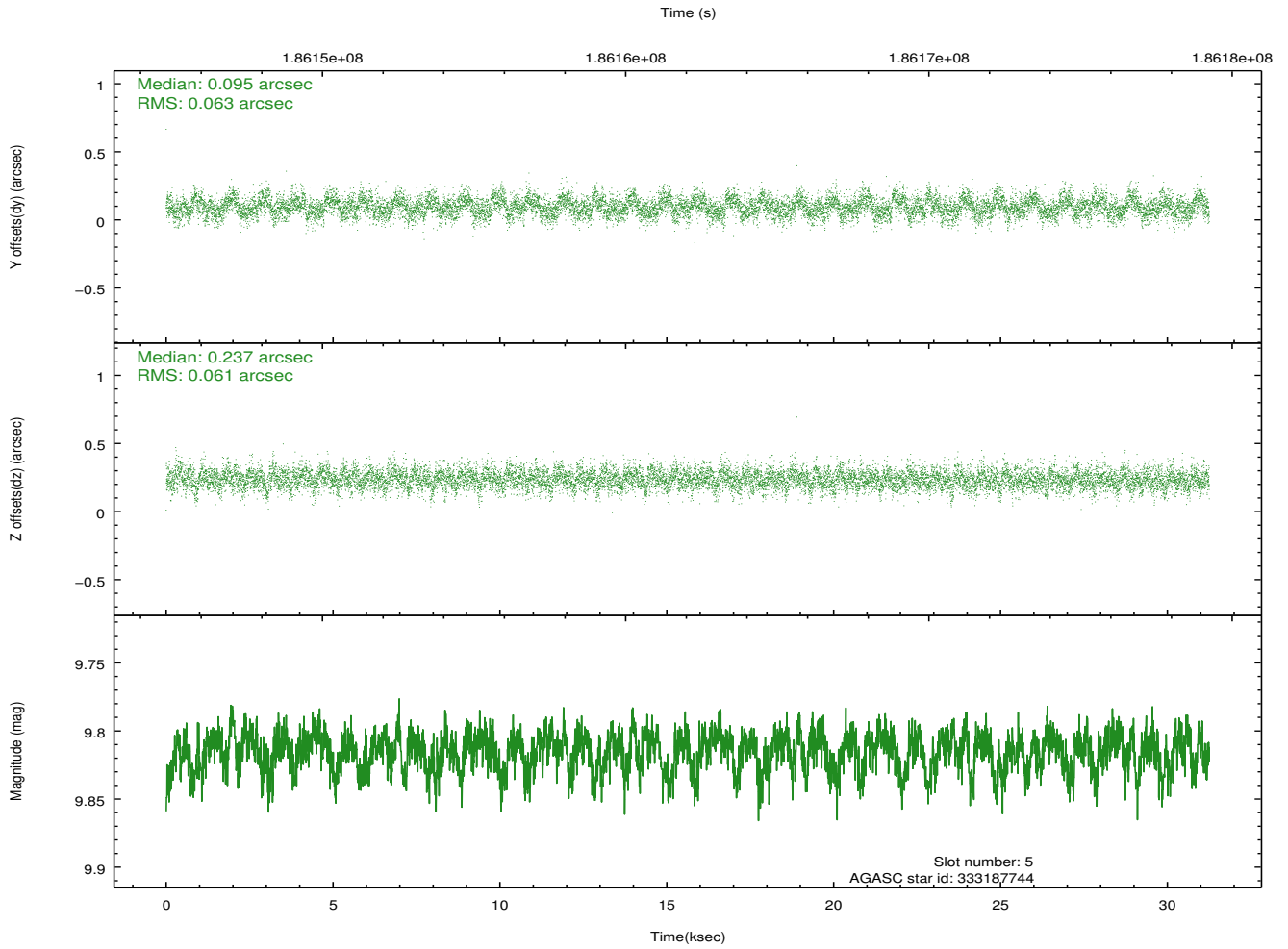
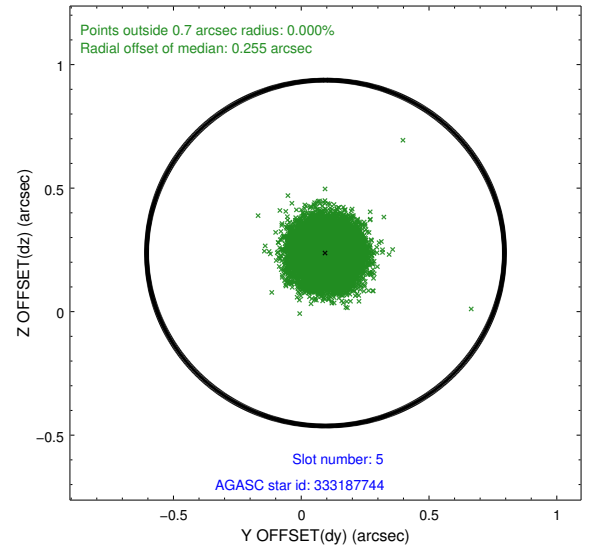
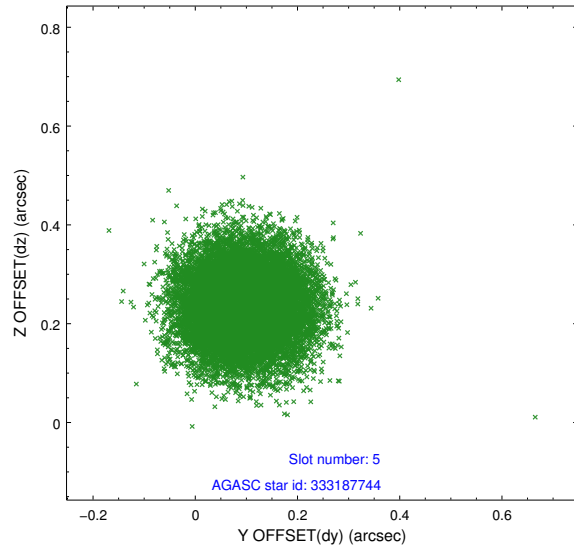
2.4.1 Slot 3



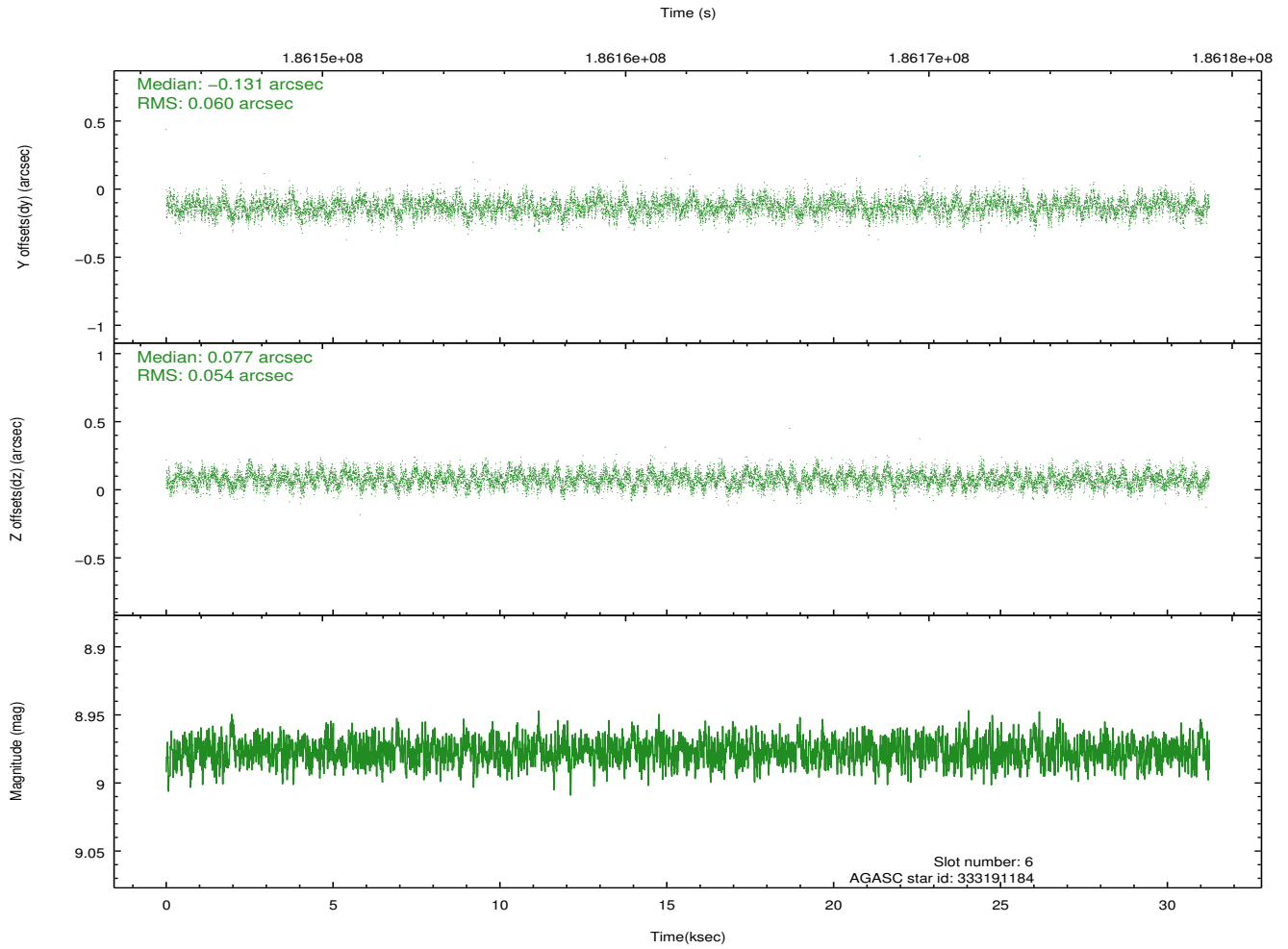
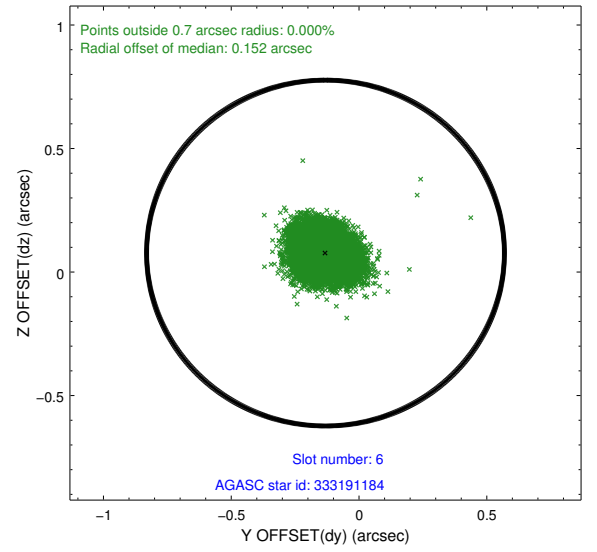
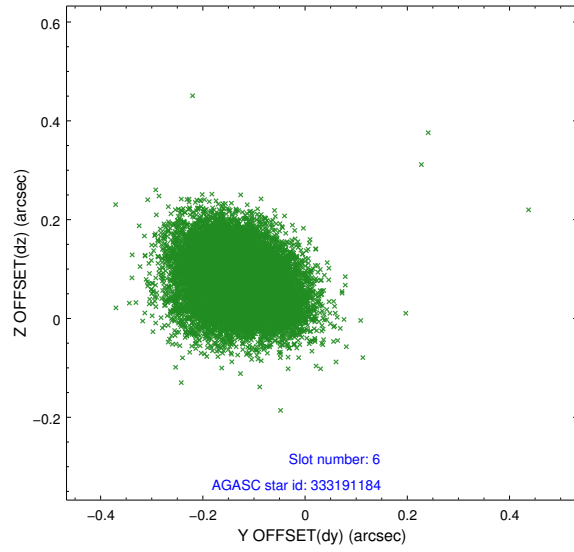
2.4.2 Slot 4



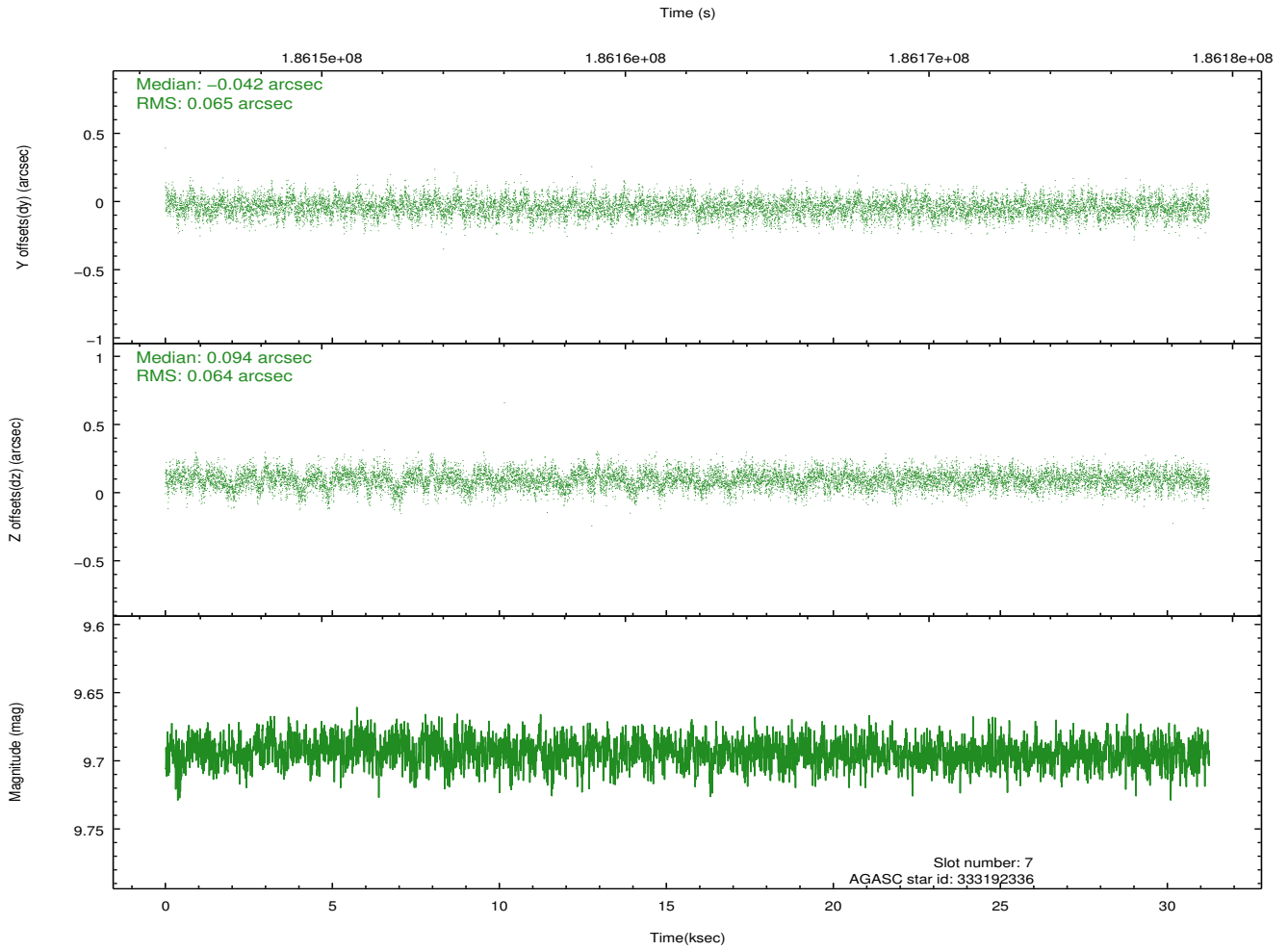
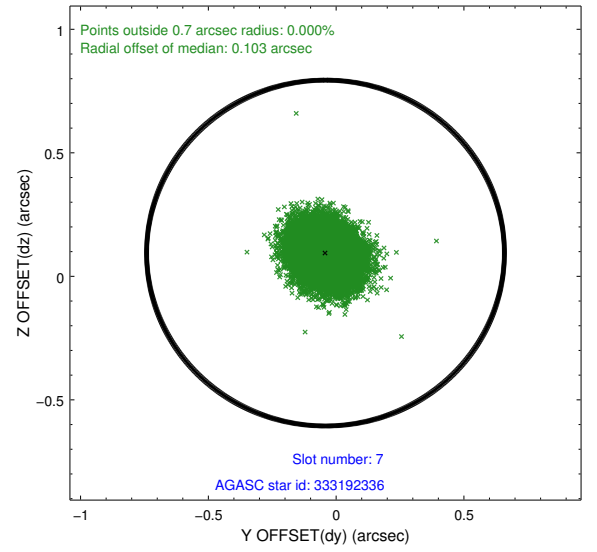
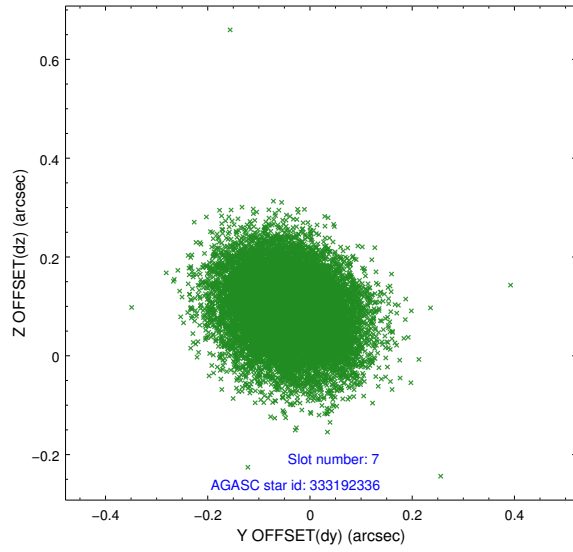
2.4.3 Slot 5



2.4.4 Slot 6

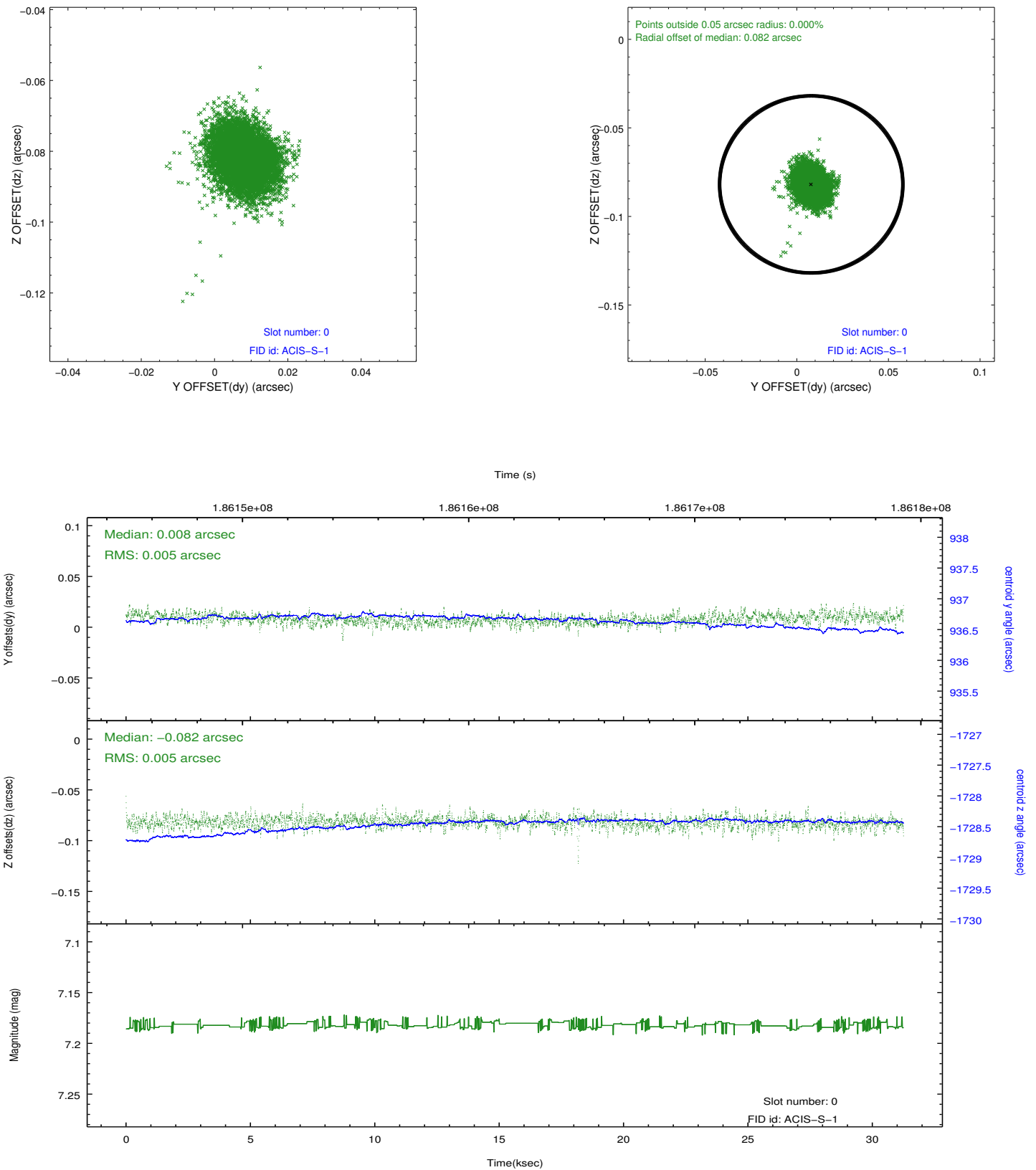


2.4.5 Slot 7

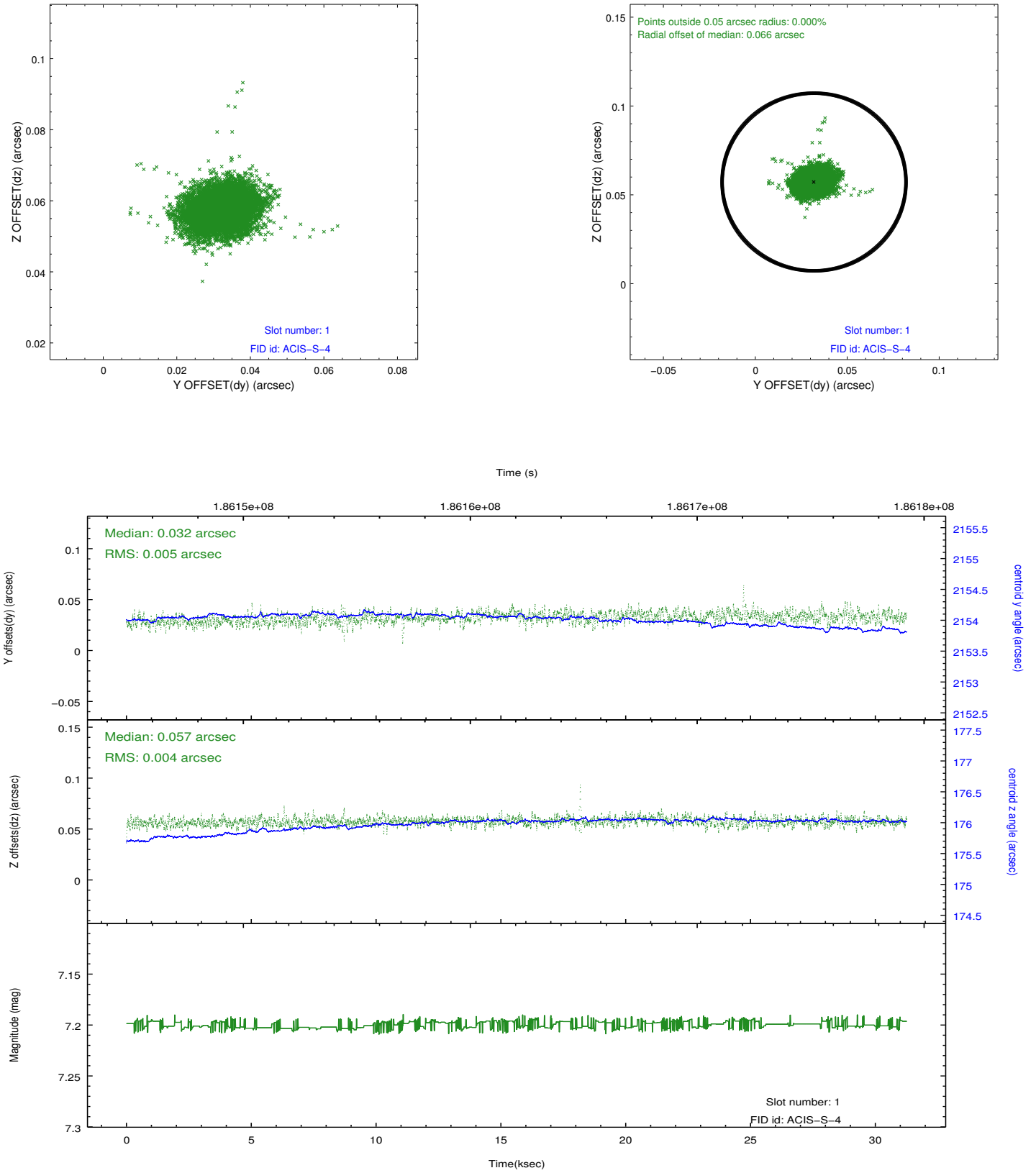


2.5 FID Slots

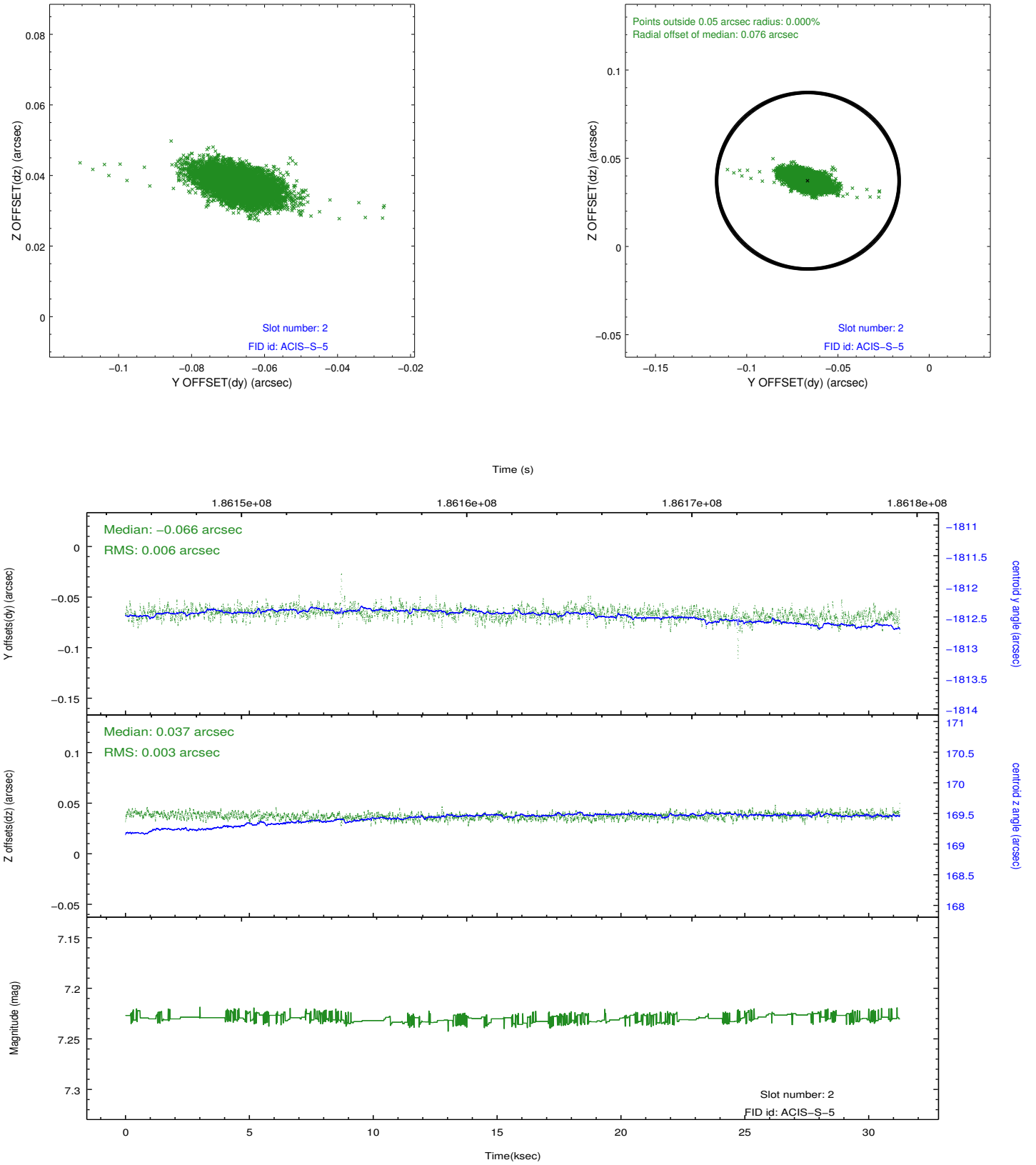
2.5.1 Slot 0



2.5.2 Slot 1



2.5.3 Slot 2



A Summary

A.1 Status

V&V Scientist	Jen Lauer
V&V Date (YYYY-MM-DD)	2012.12.02
V&V Edition	1
V&V Disposition and Status	OK
V&V Charge Time	30.972

A.2 Comments