

# V&V Reference Report

## L2 ASCDS Version : 7.6.8.1

Observation 3725 - L2 Version 001  
Chandra X-Ray Center

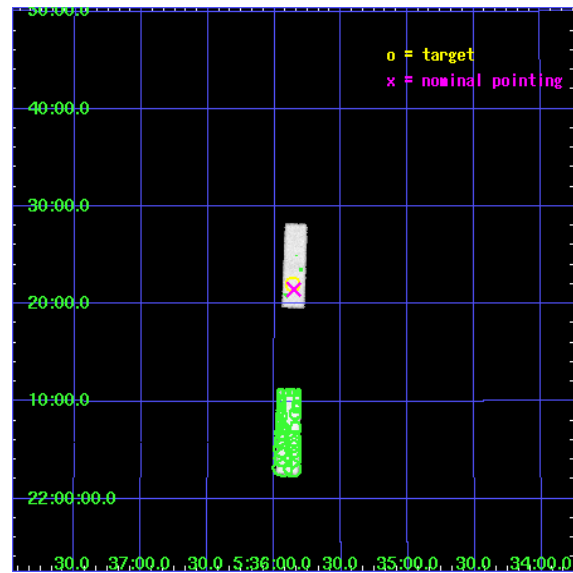
L2 Processing Date : Aug 4 2006

## Contents

<b>1</b>	<b>Front</b>	<b>2</b>
<b>2</b>	<b>OBI</b>	<b>3</b>
2.1	OBI . . . . .	3
2.1.1	Images . . . . .	3
2.1.2	Bias . . . . .	3
2.1.3	Parameters . . . . .	4
2.1.4	Events . . . . .	4
2.2	Compared Parameters . . . . .	5
2.3	Aspect . . . . .	6
2.4	Star Slots . . . . .	9
2.4.1	Slot 3 . . . . .	9
2.4.2	Slot 4 . . . . .	10
2.4.3	Slot 5 . . . . .	11
2.4.4	Slot 6 . . . . .	12
2.4.5	Slot 7 . . . . .	13
2.5	FID Slots . . . . .	14
2.5.1	Slot 0 . . . . .	14
2.5.2	Slot 1 . . . . .	15
2.5.3	Slot 2 . . . . .	16
<b>3</b>	<b>Point Sources</b>	<b>17</b>
<b>A</b>	<b>Summary</b>	<b>18</b>
A.1	Status . . . . .	18
A.2	Comments . . . . .	18

# 1 Front

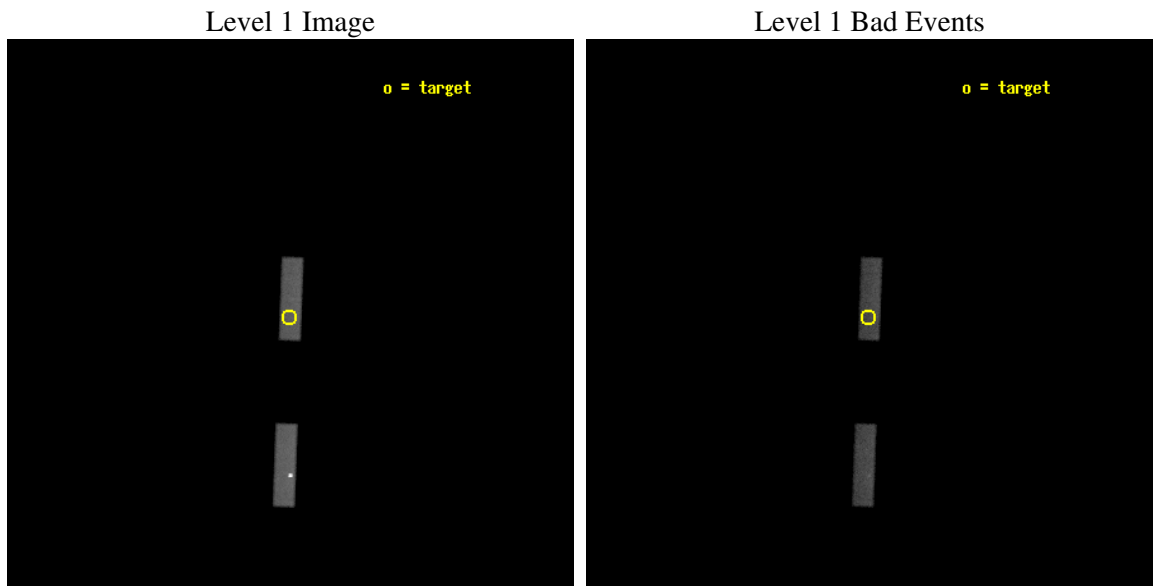
seq_num	100035
obs_id	3725
title	SPATIALLY RESOLVED X-RAY EMISSION FROM SATURN
observer	Dr Jan-Uwe Ness
object	SATURN
dtcycle	0
cycle	P
ra_targ	83.96489
dec_targ	22.36797
ra_nom	83.963441846331
dec_nom	22.358392982338
roll_nom	272.06972116604
revision	2
ontime	35587.800235689
livetime	34035.769161906
ontime5	35587.800235689
ontime7	35587.800235689
l2events	82536



## 2 OBI

### 2.1 OBI

#### 2.1.1 Images



#### 2.1.2 Bias

Chip 5

Chip 7



### 2.1.3 Parameters

obi_num	0
ascdsver	7.6.8.1
caldbver	3.2.2
date	2006-08-04T18:47:42
revision	2

sched_exp_time	35400.000000
ontime	37185.682050943
ontime5	37185.682050943
ontime7	37185.682050943
l1events	209869

### 2.1.4 Events

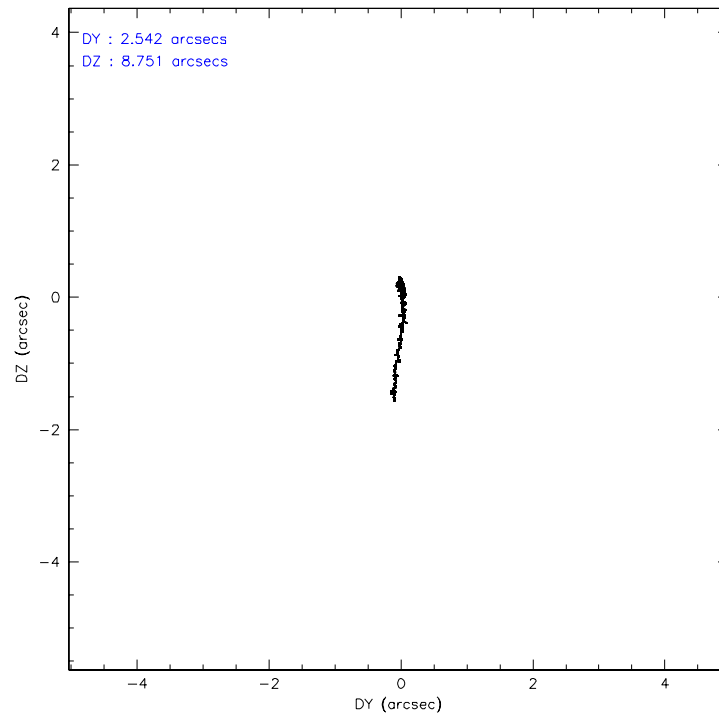
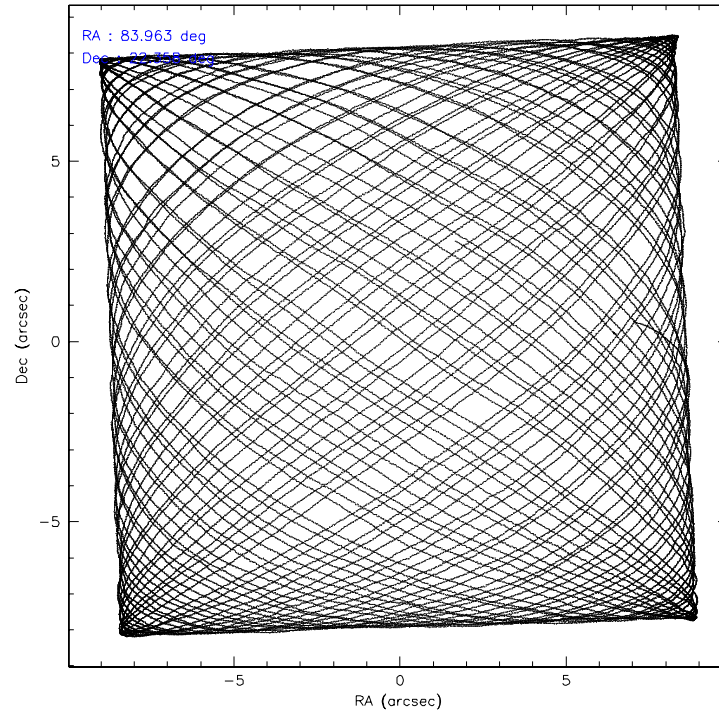
	<b>ccd 5</b>	<b>ccd 7</b>
level 1 events	127016	82853
rejected events	48259	46009
rejected %	37%	55%

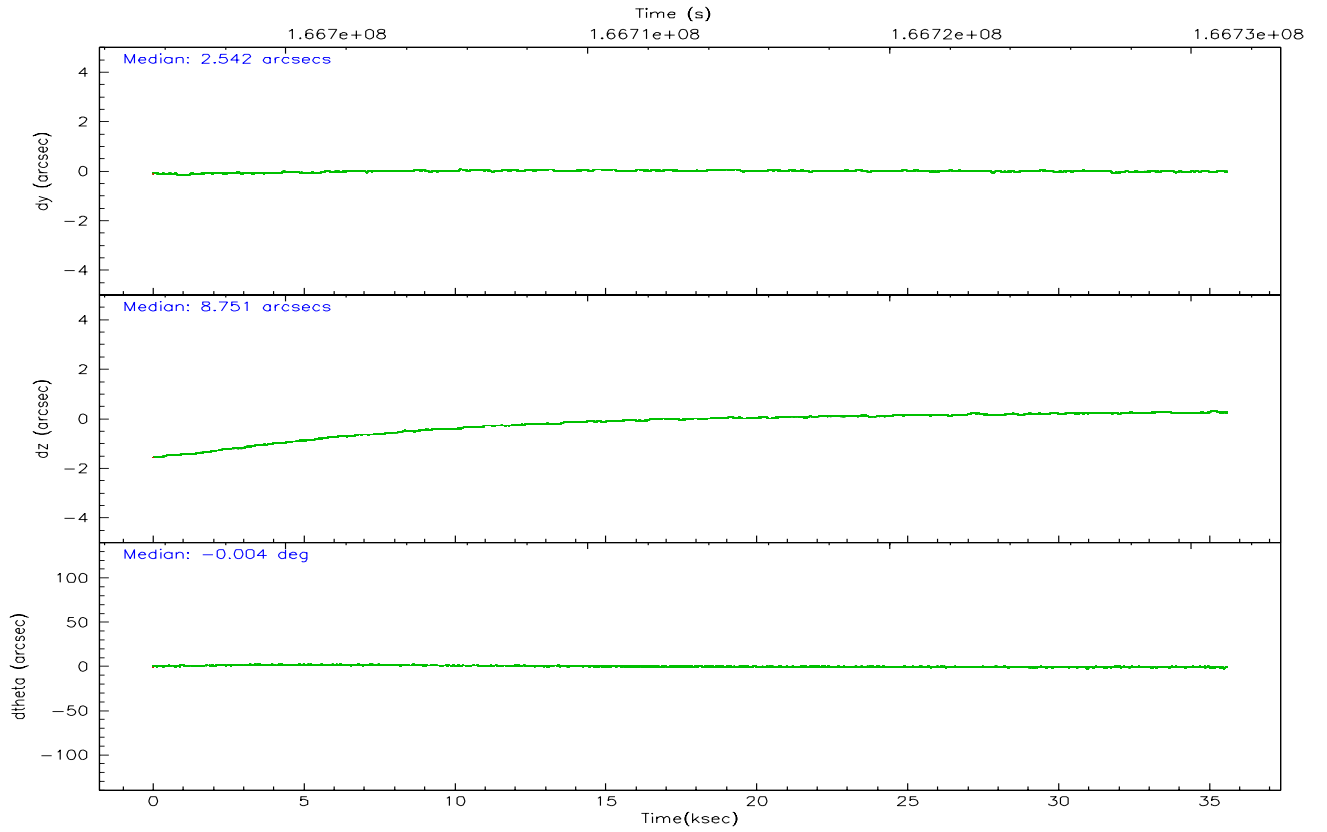
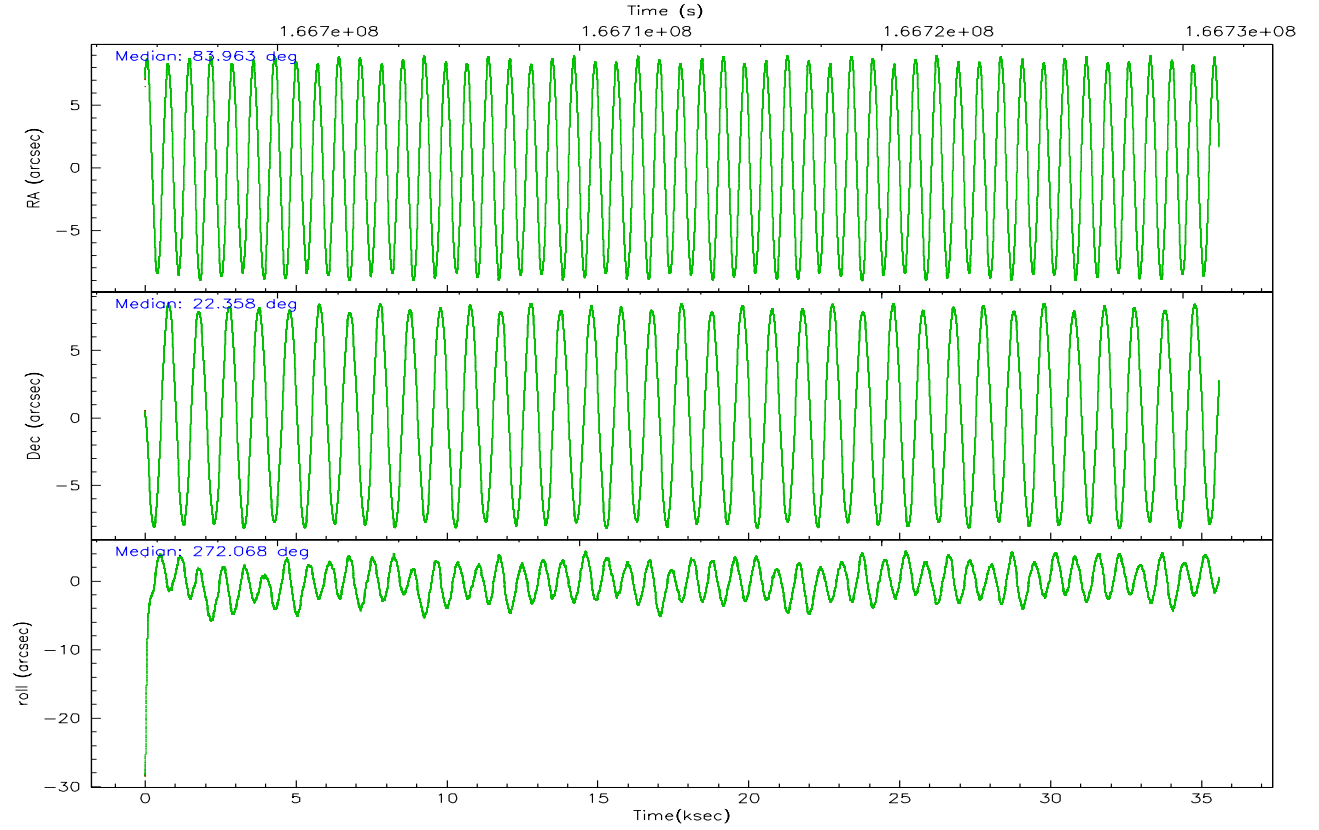
	<b>ccd 5</b>	<b>ccd 7</b>
grade 0 events	35832	3732
	28%	4%
grade 1 events	264	42
	0%	0%
grade 2 events	18039	9173
	14%	11%
grade 3 events	2781	3227
	2%	3%
grade 4 events	2269	3075
	1%	3%
grade 5 events	4352	5629
	3%	6%
grade 6 events	22993	19013
	18%	22%
grade 7 events	40486	38962
	31%	47%

## 2.2 Compared Parameters

Parameter	Planned	Actual	Parameter	Planned	Actual
Instrument	ACIS	ACIS	Obspar format version number	6	6
Detector	ACIS-57	ACIS-57	Obspar file type	PREDICTED	ACTUAL
Grating	NONE	NONE	Obspar update status	NONE	UPDATED
Data mode	VFAINT	VFAINT	On-chip summing requested	N	N
Observation mode	POINTING	POINTING	Subarray requested	1/4	1/4
Pointing RA	83.947455	83.96344184633124	Subarray start row	0	385
Pointing Dec	22.381273	22.35839298233778	Subarray row count	1024	256
Pointing Roll	271.919184	272.069721166039	Alternating exposures requested	N	N
SIM focus pos (mm)	-0.684267	-0.6828225247311905	Primary exposure time	0.000000	0.9
SIM defocus (mm)	0	0.001444936568705701			
SIM translation stage pos (mm)	-190.132523	-190.1400660498719			
SIM translation stage offset (mm)	0	0.00754346686406393			
Observation start time	166695788.184000	166694002.91745			
Observation start date	2003-04-14T08:22:04	2003-04-14T07:53:22			
Observation end time	166731188.184000	166731321.63153			
Observation end date	2003-04-14T18:12:04	2003-04-14T18:15:21			
Read mode	TIMED	TIMED			

## 2.3 Aspect





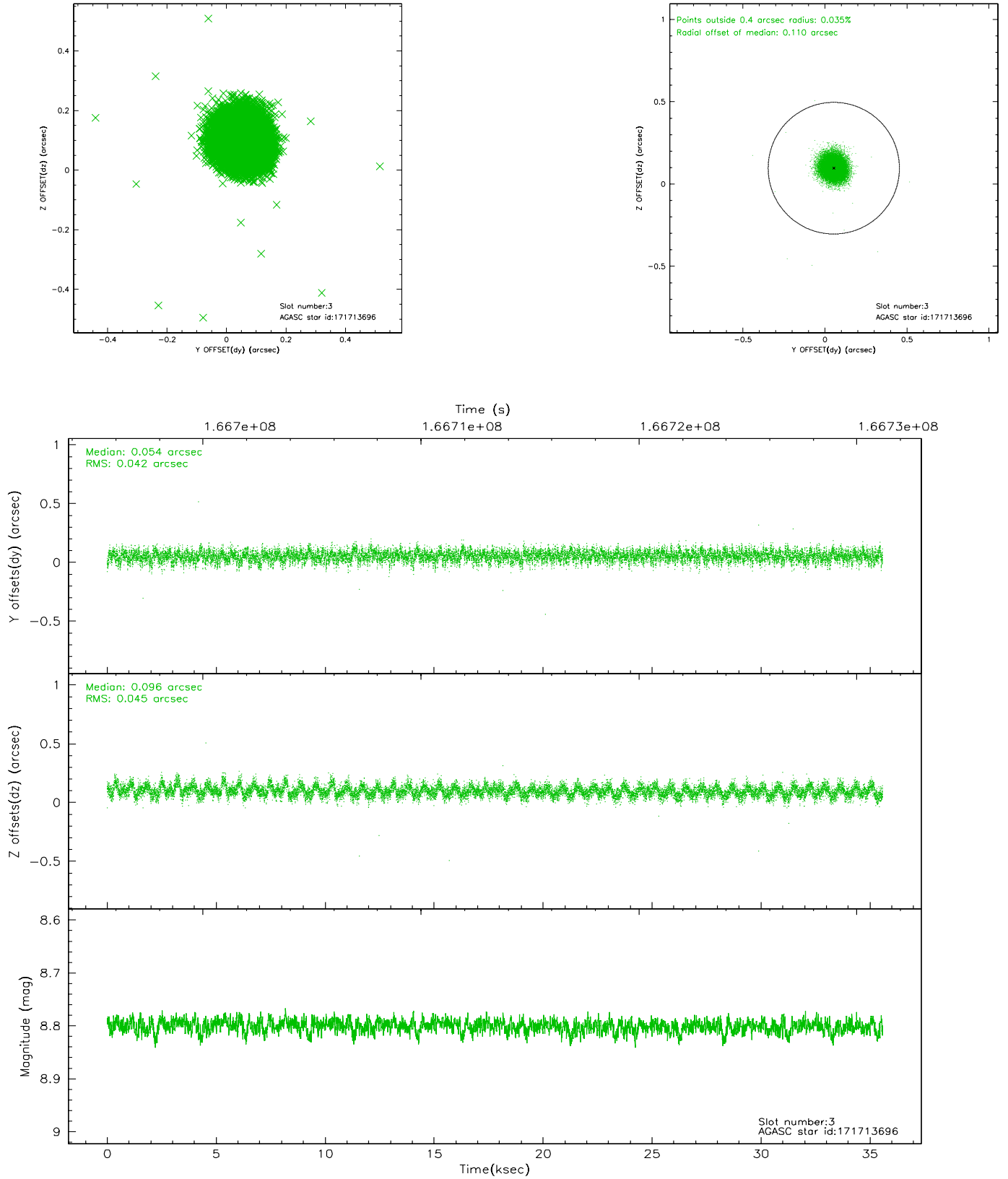
### Slot Statistics

slot	status	id	mag	n_pts	med_dy	med_dz	dr1	dr2	ra	dec	mean_y	mean_z
0	FID	ACIS-S-2	7.10	8681	-0.014	0.011	0.008	0.013	0.000000	0.000000	-755.17	-1729.74
1	FID	ACIS-S-4	7.20	8680	-0.049	0.004	0.006	0.011	0.000000	0.000000	2158.04	178.71
2	FID	ACIS-S-5	7.24	8681	0.032	-0.006	0.008	0.012	0.000000	0.000000	-1807.93	172.40
3	GUIDE	171713696	8.80	17353	0.054	0.096	0.065	0.105	84.473197	21.894804	1806.26	1696.96
4	GUIDE	171714904	9.28	17357	0.122	0.098	0.089	0.155	84.565036	22.013202	1389.69	2016.25
5	GUIDE	242223104	8.60	17351	-0.216	-0.196	0.063	0.101	83.329008	22.957429	-2145.89	-1979.40
6	GUIDE	243941560	8.29	17361	-0.047	-0.085	0.063	0.100	83.733264	22.568598	-698.28	-689.20
7	GUIDE	171721904	9.19	17350	0.092	0.089	0.093	0.168	84.272676	22.116922	986.47	1052.41

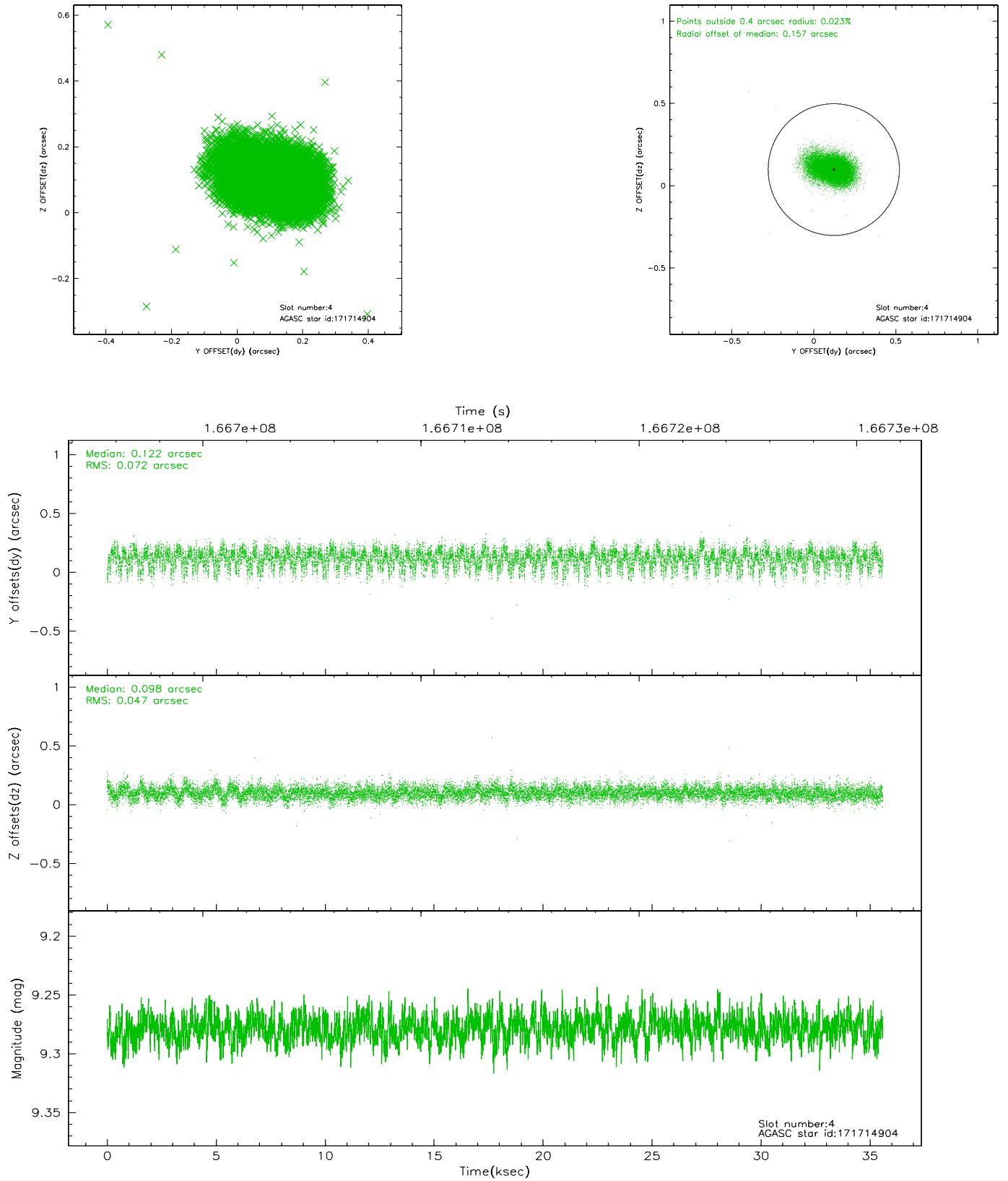


## 2.4 Star Slots

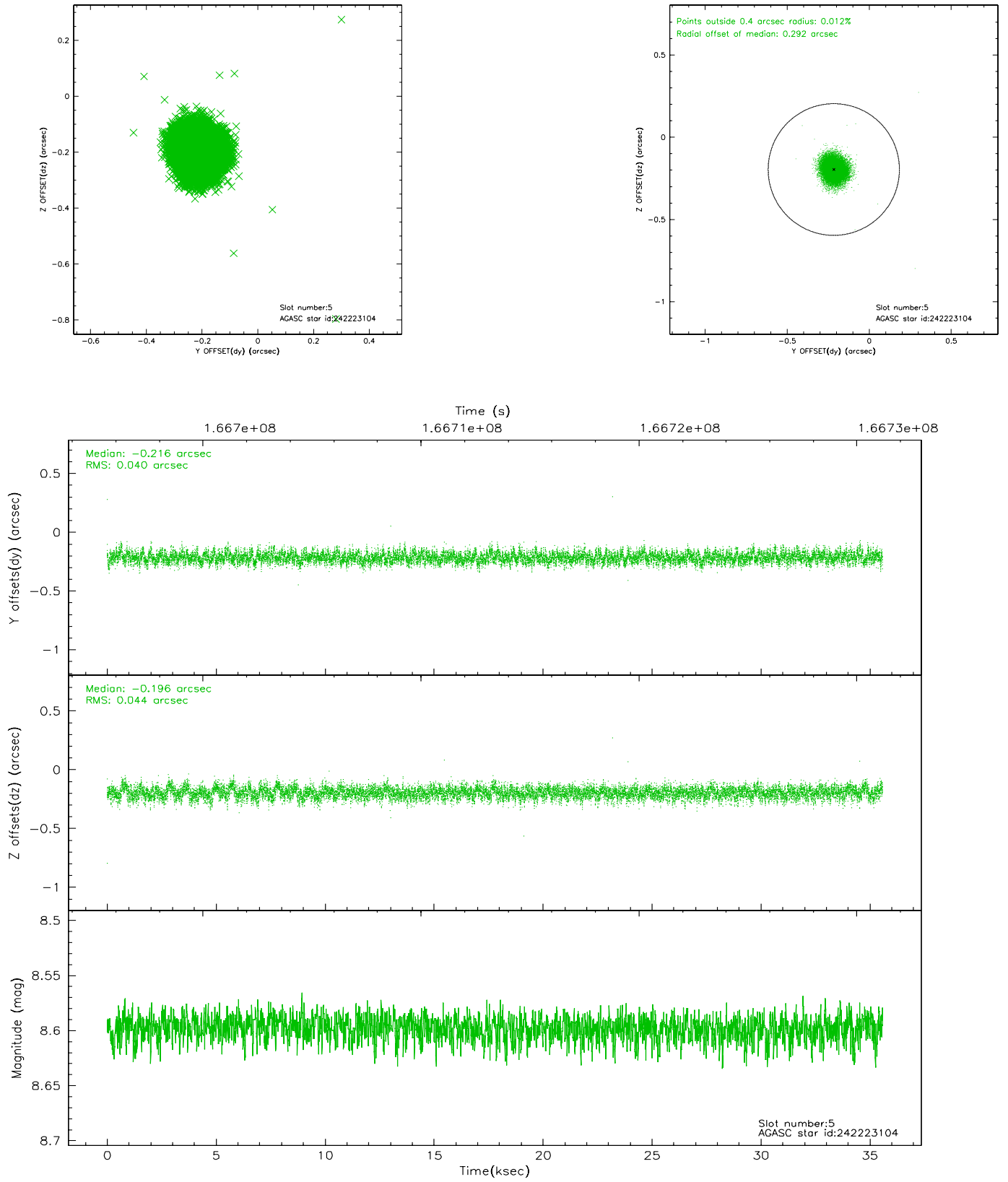
### 2.4.1 Slot 3



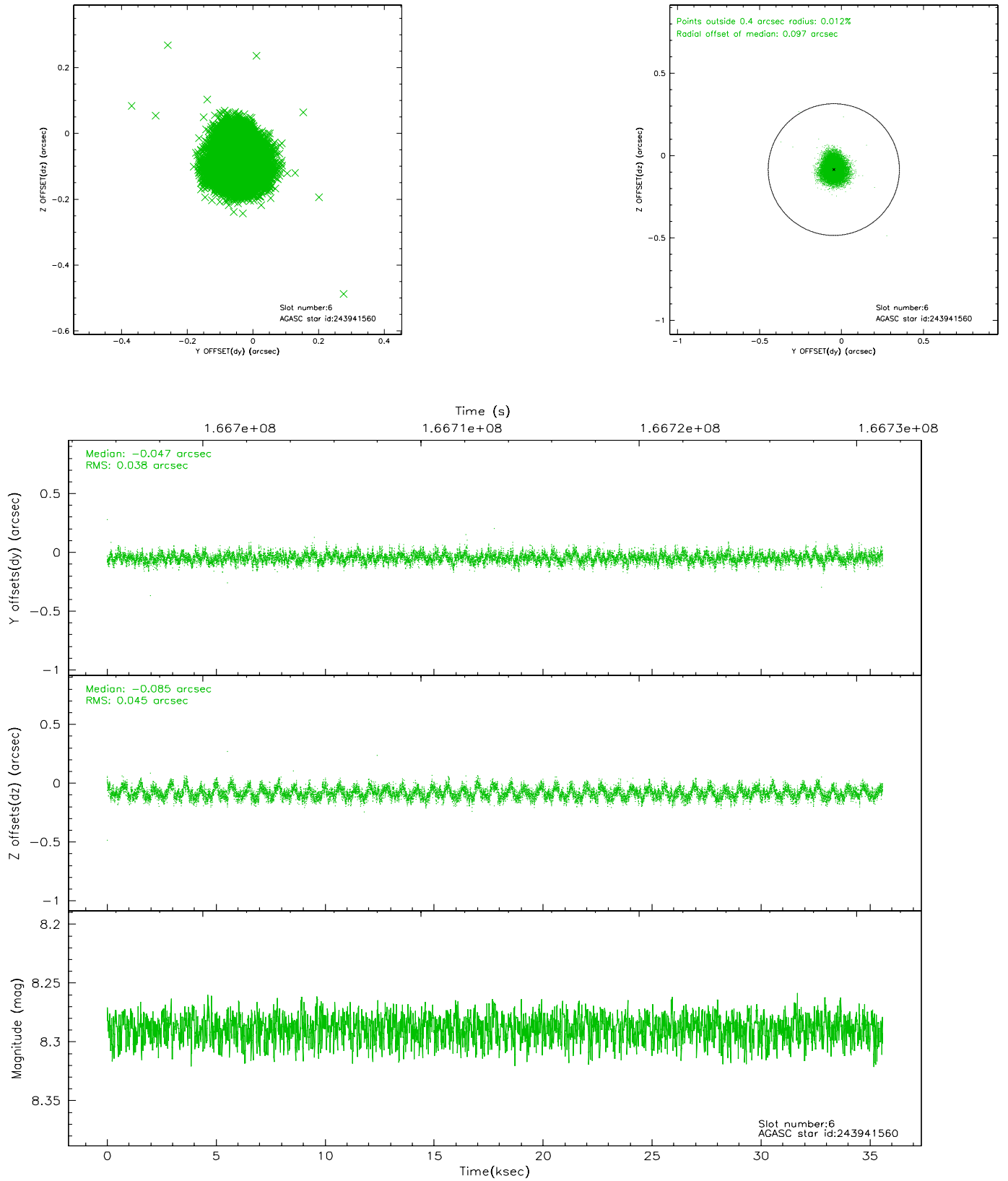
## 2.4.2 Slot 4



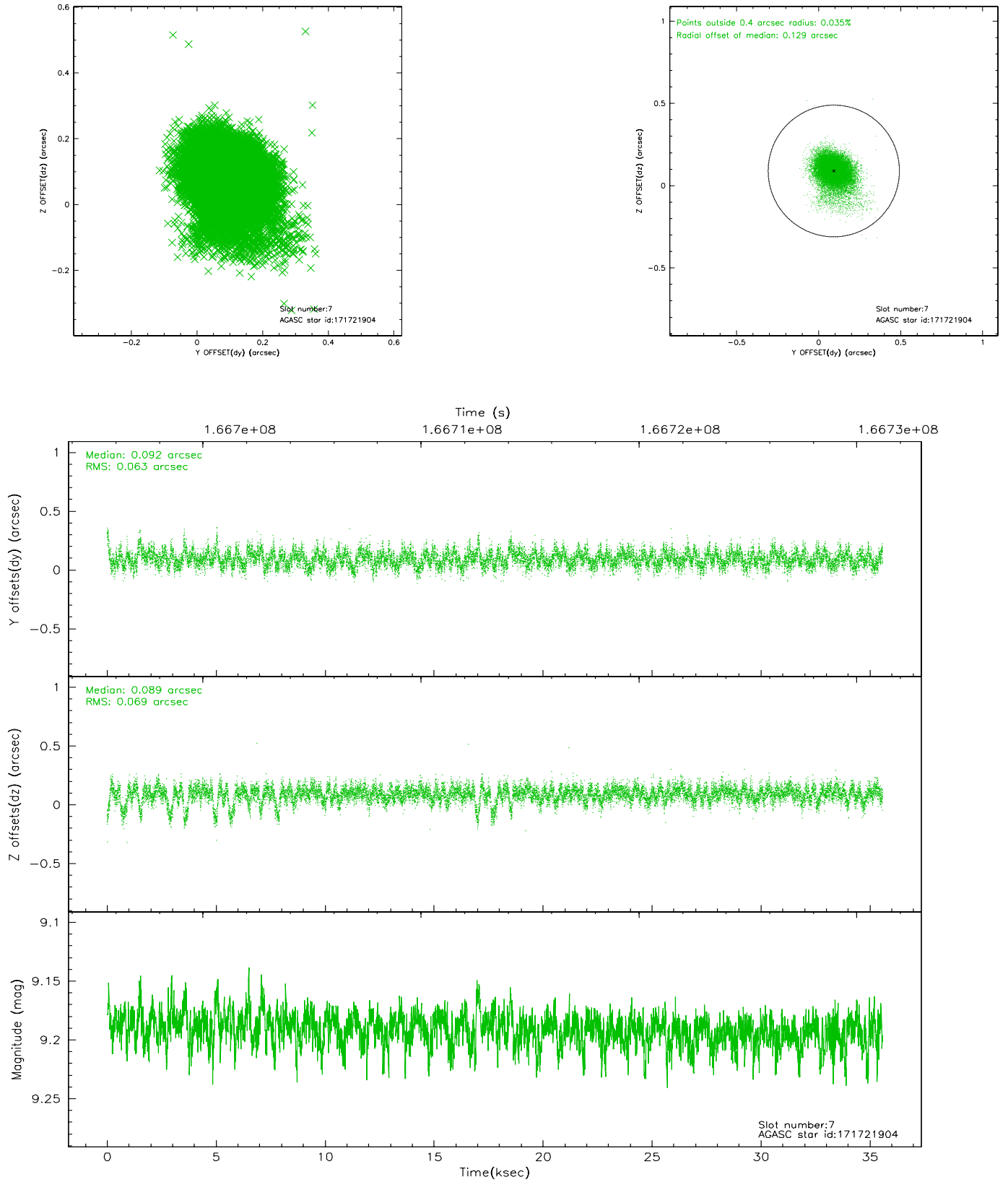
### 2.4.3 Slot 5



## 2.4.4 Slot 6

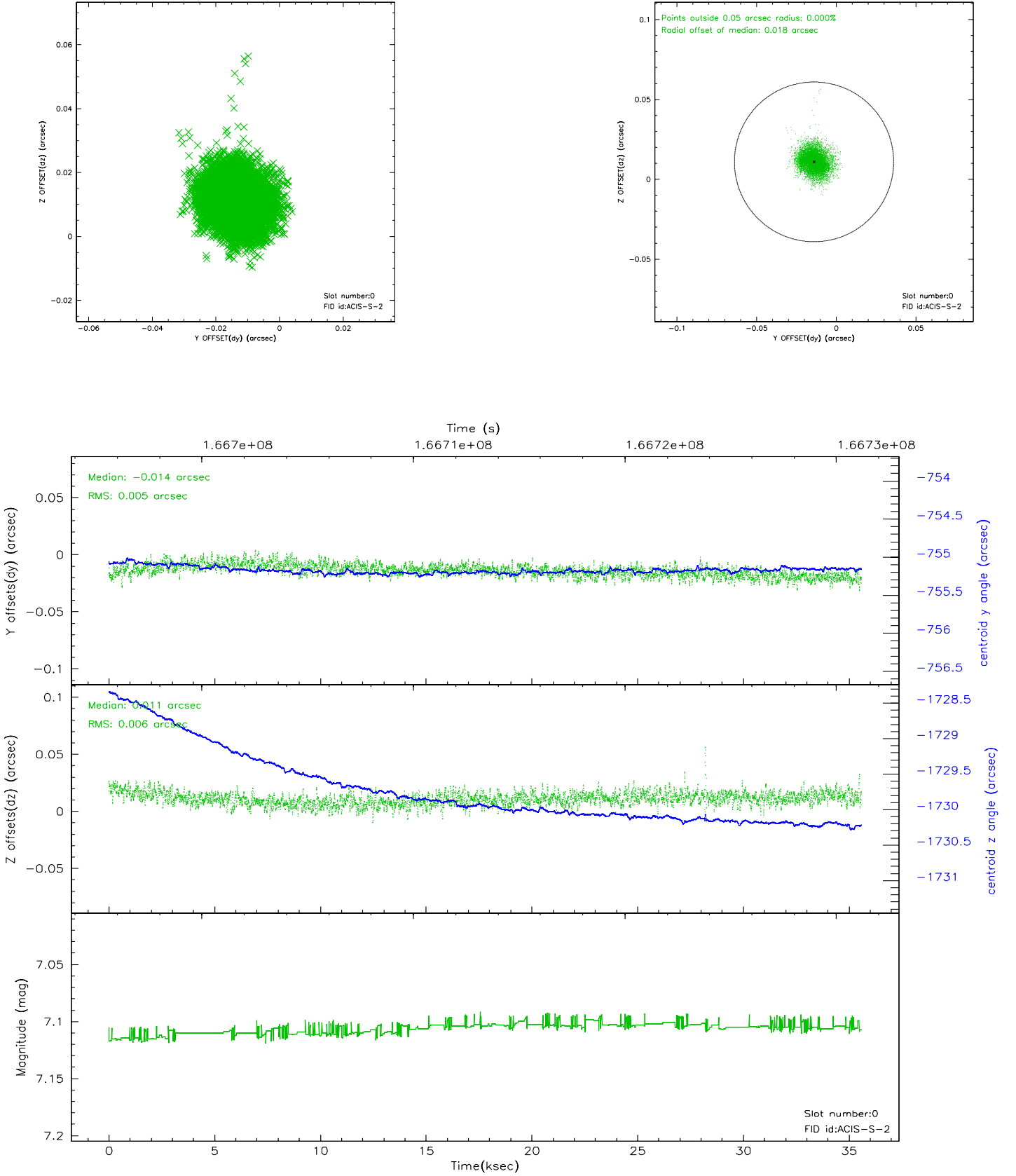


## 2.4.5 Slot 7

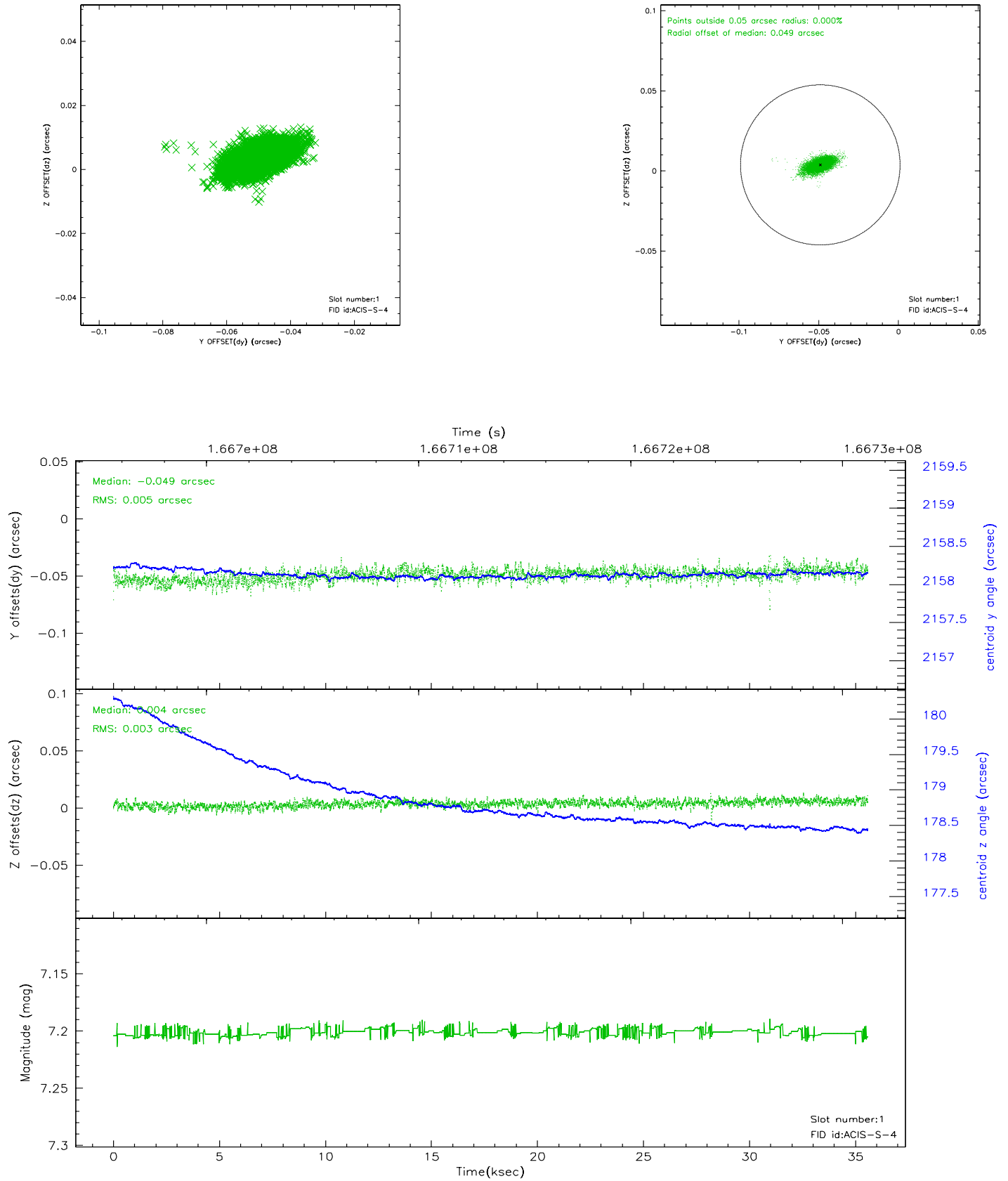


## 2.5 FID Slots

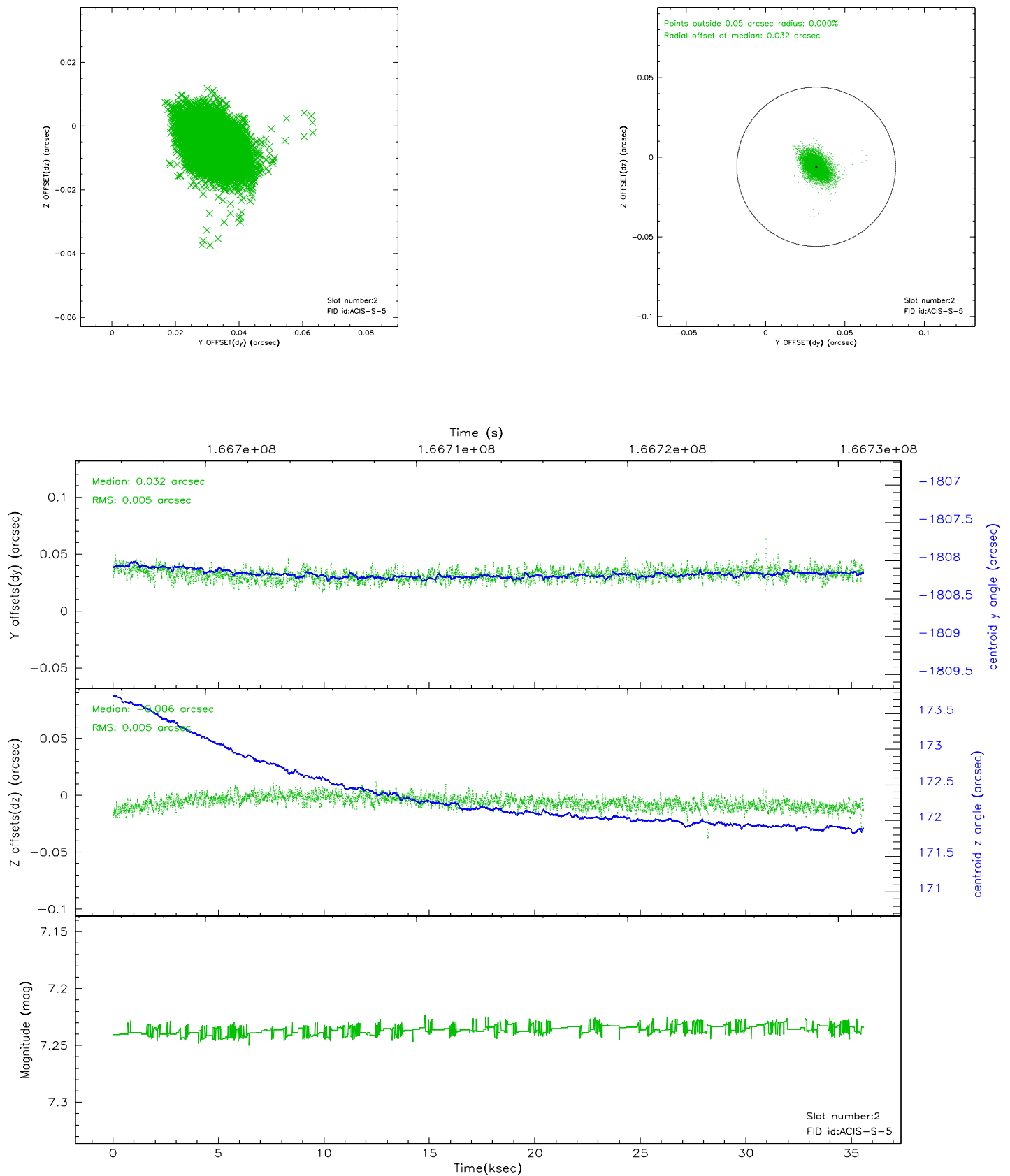
### 2.5.1 Slot 0



## 2.5.2 Slot 1

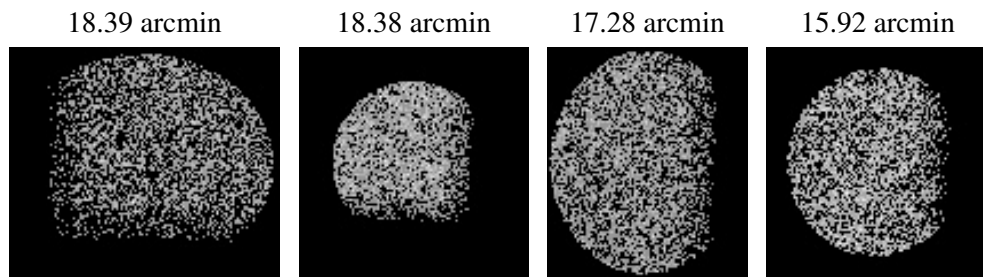


### 2.5.3 Slot 2





### 3 Point Sources



## A Summary

### A.1 Status

V&V Scientist	Beth Sundheim
V&V Date (YYYY-MM-DD)	2006.08.06
V&V Edition	1
V&V Disposition and Status	OK
V&V Charge Time	35.587

### A.2 Comments