

# V&V Reference Report

## L2 ASCDS Version : 7.6.9

Observation 3245 - L2 Version 001  
Chandra X-Ray Center

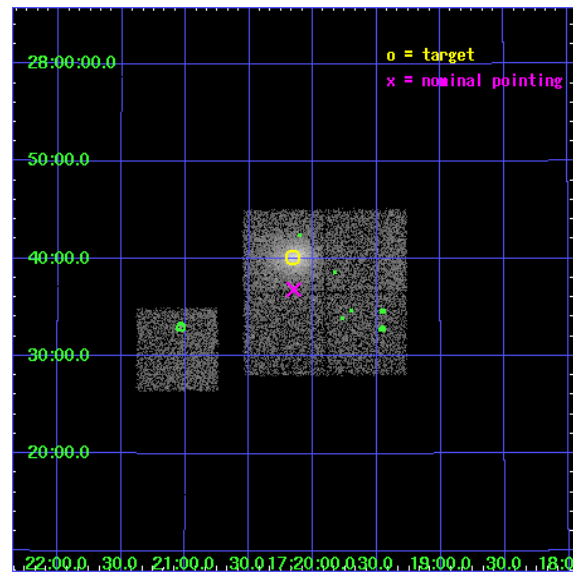
L2 Processing Date : Oct 4 2006

## Contents

<b>1</b>	<b>Front</b>	<b>2</b>
<b>2</b>	<b>OBI</b>	<b>3</b>
2.1	OBI . . . . .	3
2.1.1	Images . . . . .	3
2.1.2	Bias . . . . .	3
2.1.3	Parameters . . . . .	4
2.1.4	Events . . . . .	4
2.2	Compared Parameters . . . . .	5
2.3	Aspect . . . . .	6
2.4	Star Slots . . . . .	9
2.4.1	Slot 3 . . . . .	9
2.4.2	Slot 4 . . . . .	10
2.4.3	Slot 5 . . . . .	11
2.4.4	Slot 6 . . . . .	12
2.4.5	Slot 7 . . . . .	13
2.5	FID Slots . . . . .	14
2.5.1	Slot 0 . . . . .	14
2.5.2	Slot 1 . . . . .	15
2.5.3	Slot 2 . . . . .	16
<b>3</b>	<b>Point Sources</b>	<b>17</b>
<b>A</b>	<b>Summary</b>	<b>18</b>
A.1	Status . . . . .	18
A.2	Comments . . . . .	18

# 1 Front

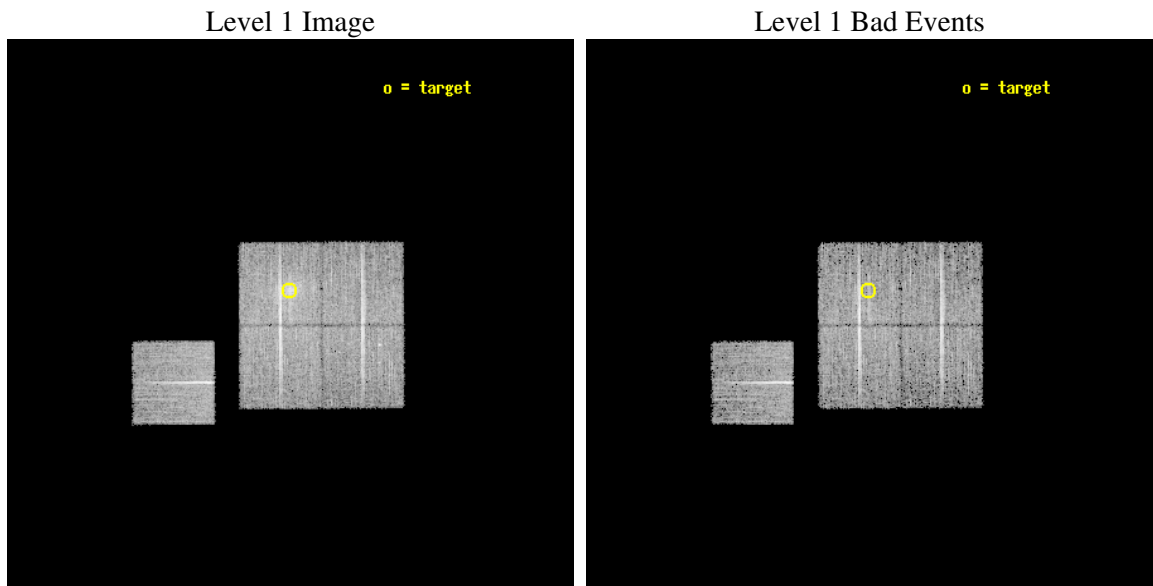
seq_num	800245
obs_id	3245
title	OBSERVATION OF BCS CLUSTERS, SECOND SET
observer	DR. LEON VANSPEYBROECK
object	A2259
dtcycle	0
cycle	P
ra_targ	260.04
dec_targ	27.668889
ra_nom	260.0374350627
dec_nom	27.614589158772
roll_nom	269.74612058297
revision	2
ontime	10118.399980545
livetime	9986.1956357415
ontime0	10118.399980545
ontime1	10115.259020329
ontime2	10118.399980545
ontime3	10118.399980545
ontime6	10118.399980545
l2events	30780



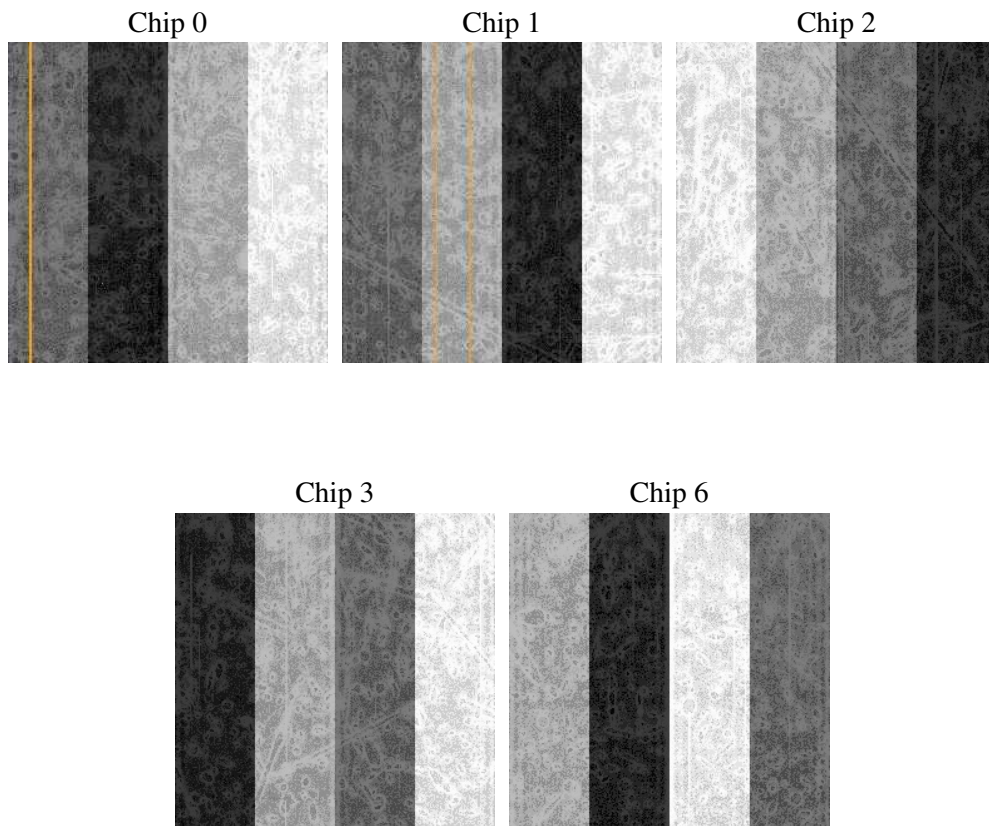
## 2 OBI

### 2.1 OBI

#### 2.1.1 Images



#### 2.1.2 Bias



### 2.1.3 Parameters

obi_num	1
ascdsver	7.6.9
caldbver	3.2.3
date	2006-10-04T09:49:52
revision	2

sched_exp_time	10000.000000
ontime	10123.444908798
ontime0	10123.444908798
ontime1	10120.303968519
ontime2	10123.444908798
ontime3	10123.444908798
ontime6	10123.444928735
l1events	279744

### 2.1.4 Events

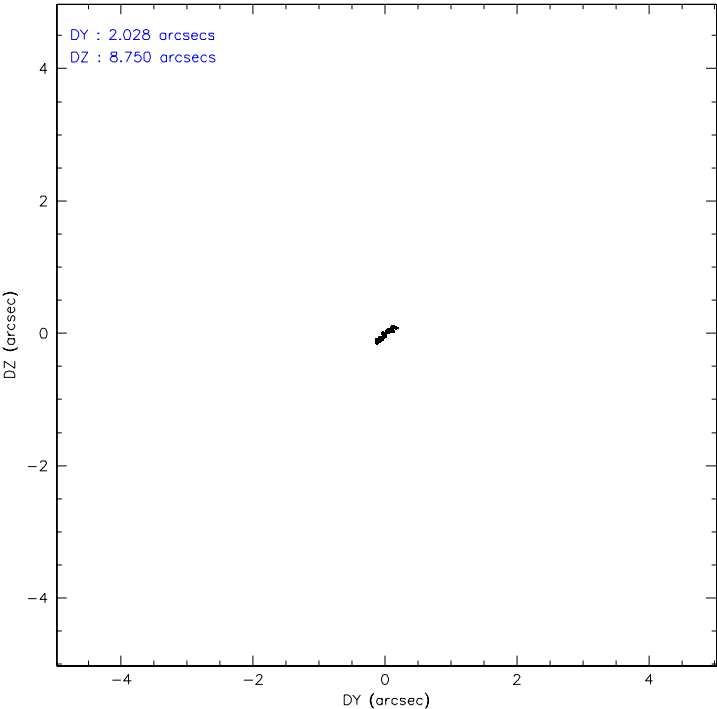
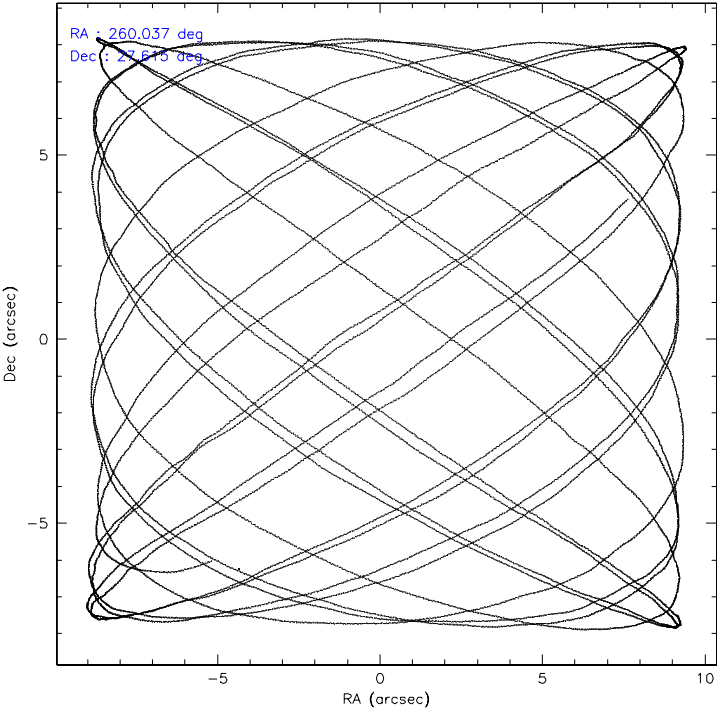
	ccd 0	ccd 1	ccd 2	ccd 3	ccd 6
level 1 events	49912	52750	55896	65700	55486
rejected events	44257	46626	50596	52386	50181
rejected %	88%	88%	90%	79%	90%

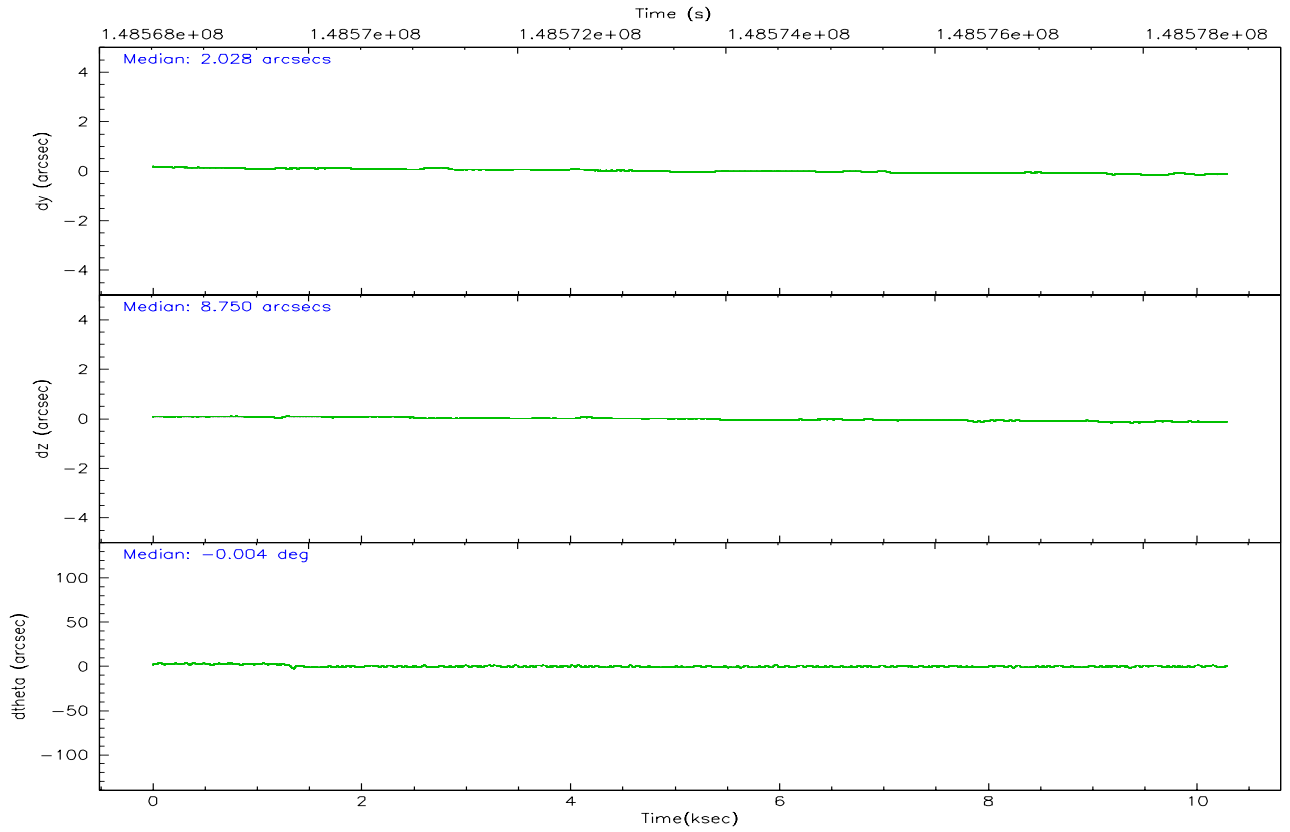
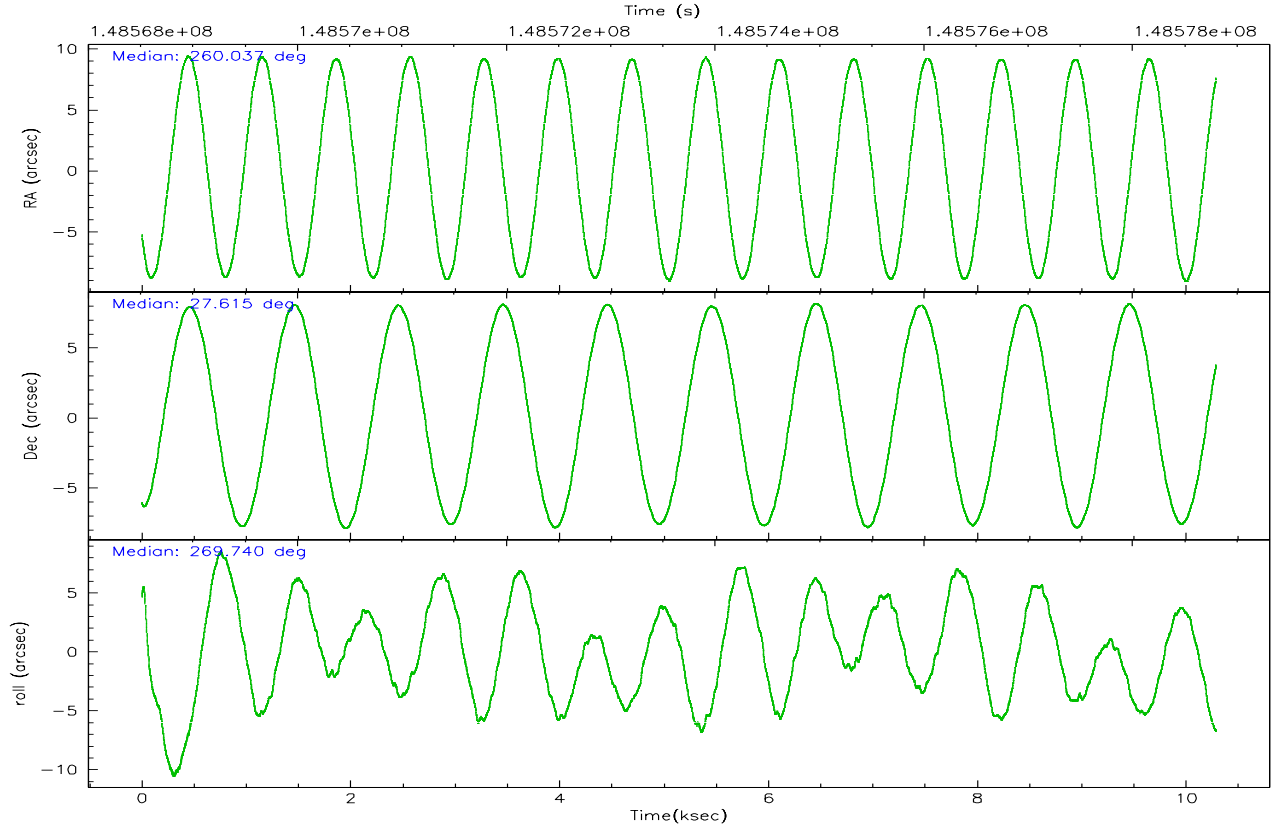
	ccd 0	ccd 1	ccd 2	ccd 3	ccd 6
grade 0 events	2184	2261	1978	8665	1793
	4%	4%	3%	13%	3%
grade 1 events	27	21	24	51	20
	0%	0%	0%	0%	0%
grade 2 events	1257	1296	1236	1893	1152
	2%	2%	2%	2%	2%
grade 3 events	669	696	604	834	628
	1%	1%	1%	1%	1%
grade 4 events	577	696	595	789	605
	1%	1%	1%	1%	1%
grade 5 events	1804	1877	1759	2059	2159
	3%	3%	3%	3%	3%
grade 6 events	970	1176	889	1141	1128
	1%	2%	1%	1%	2%
grade 7 events	42424	44727	48811	50268	48001
	84%	84%	87%	76%	86%

## 2.2 Compared Parameters

Parameter	Planned	Actual	Parameter	Planned	Actual
Instrument	ACIS	ACIS	Obspar format version number	6	6
Detector	ACIS-01236	ACIS-01236	Obspar file type	PREDICTED	ACTUAL
Grating	NONE	NONE	Obspar update status	NONE	UPDATED
Data mode	VFAINT	VFAINT	Number of optional ACIS chips dropped	0	0
Observation mode	POINTING	POINTING	On-chip summing requested	N	N
Pointing RA	260.022036	260.0374350627002	Subarray requested	NONE	NONE
Pointing Dec	27.638348	27.61458915877173	Alternating exposures requested	N	N
Pointing Roll	269.544566	269.746120582975	Primary exposure time	0.000000	3.1
SIM focus pos (mm)	-0.782348	-0.7809083437167272			
SIM defocus (mm)	0	0.001439871863259334			
SIM translation stage pos (mm)	-225.840463	-225.8433433320239			
SIM translation stage offset (mm)	-7.752	-7.749109670905796			
Observation start time	148568800.184000	148567787.35978			
Observation start date	2002-09-16T13:05:36	2002-09-16T12:49:47			
Observation end time	148578800.184000	148579507.72276			
Observation end date	2002-09-16T15:52:16	2002-09-16T16:05:07			
Read mode	TIMED	TIMED			

### 2.3 Aspect





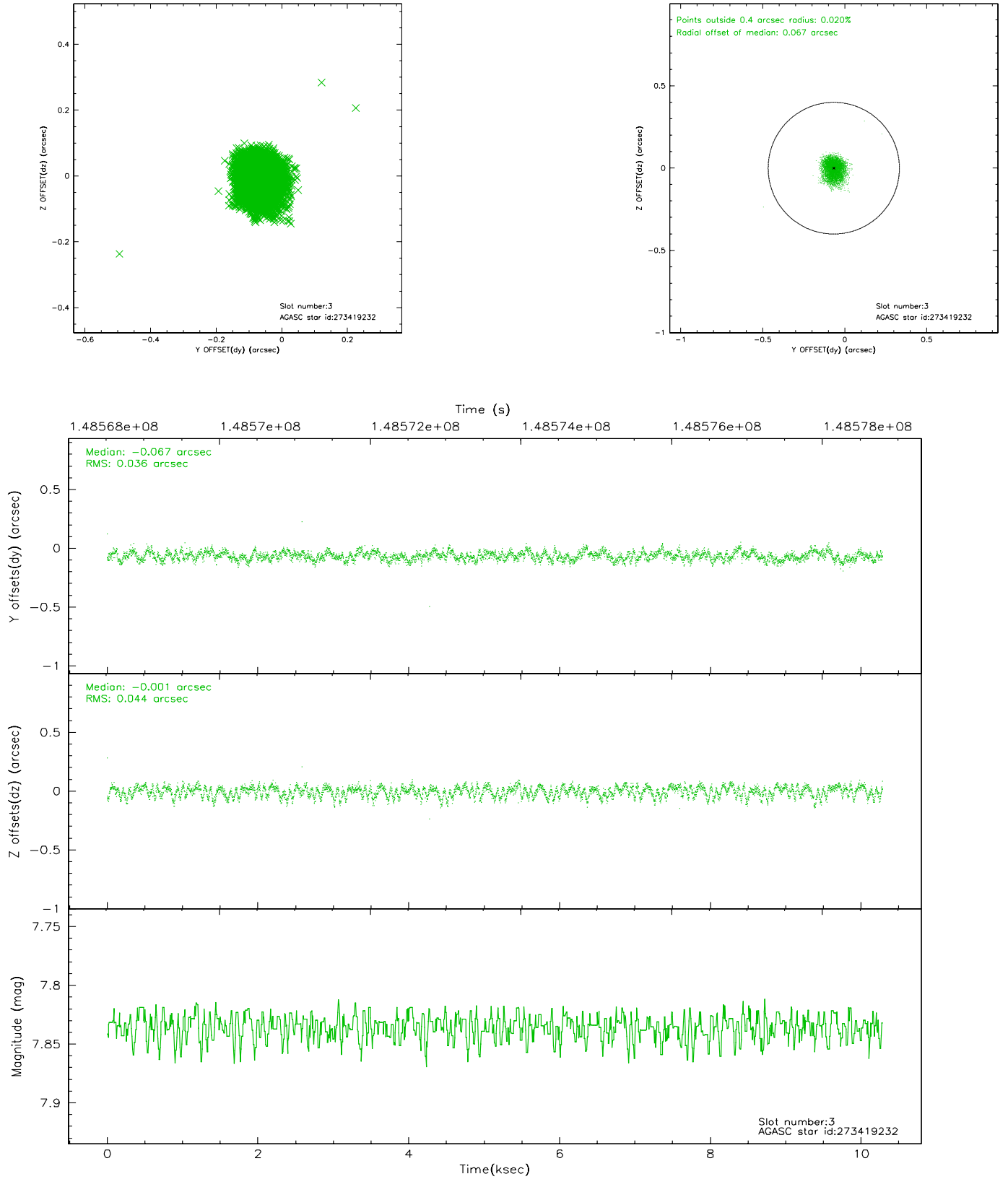
### Slot Statistics

slot	status	id	mag	n_pts	med_dy	med_dz	dr1	dr2	ra	dec	mean_y	mean_z
0	FID	ACIS-I-2	7.17	2509	-0.072	-0.012	0.010	0.016	0.000000	0.000000	-756.99	-996.63
1	FID	ACIS-I-4	7.17	2509	-0.038	0.050	0.006	0.012	0.000000	0.000000	2156.79	909.32
2	FID	ACIS-I-5	7.22	2509	0.010	0.031	0.010	0.019	0.000000	0.000000	-1809.72	906.64
3	GUIDE	273419232	7.83	5019	-0.067	-0.001	0.060	0.094	259.649336	28.251345	-2198.68	-1198.78
4	GUIDE	272905744	7.78	5018	-0.126	0.011	0.078	0.123	260.699990	27.859357	-819.23	2151.81
5	GUIDE	272898872	9.01	5018	0.292	0.071	0.073	0.120	260.157490	27.527501	395.83	437.08
6	GUIDE	271189488	9.38	5016	-0.075	-0.067	0.092	0.155	259.387780	28.096100	-1636.47	-2026.60
7	GUIDE	271192608	9.62	5018	-0.026	-0.019	0.129	0.210	259.258197	27.917186	-991.66	-2437.32

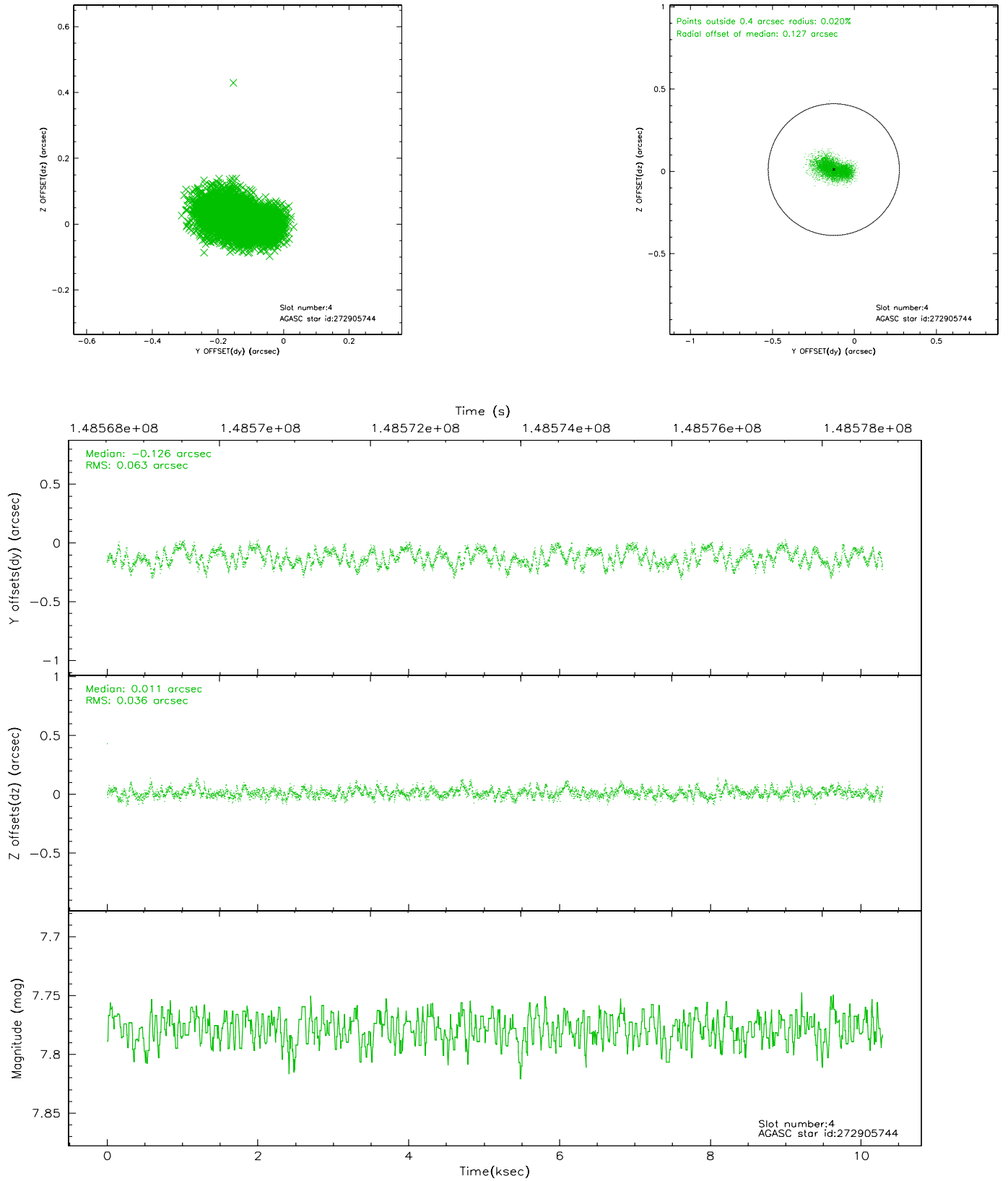


## 2.4 Star Slots

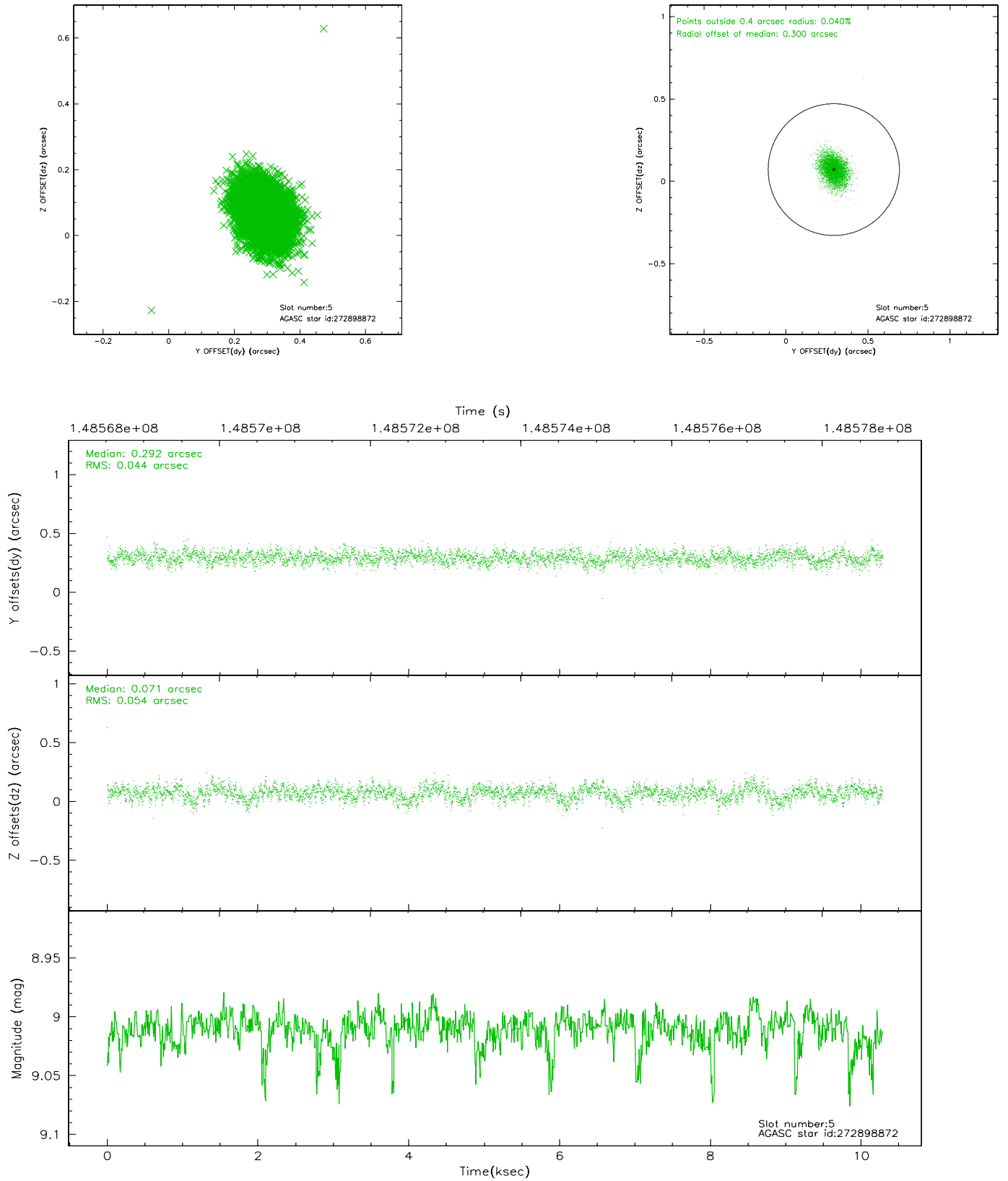
### 2.4.1 Slot 3



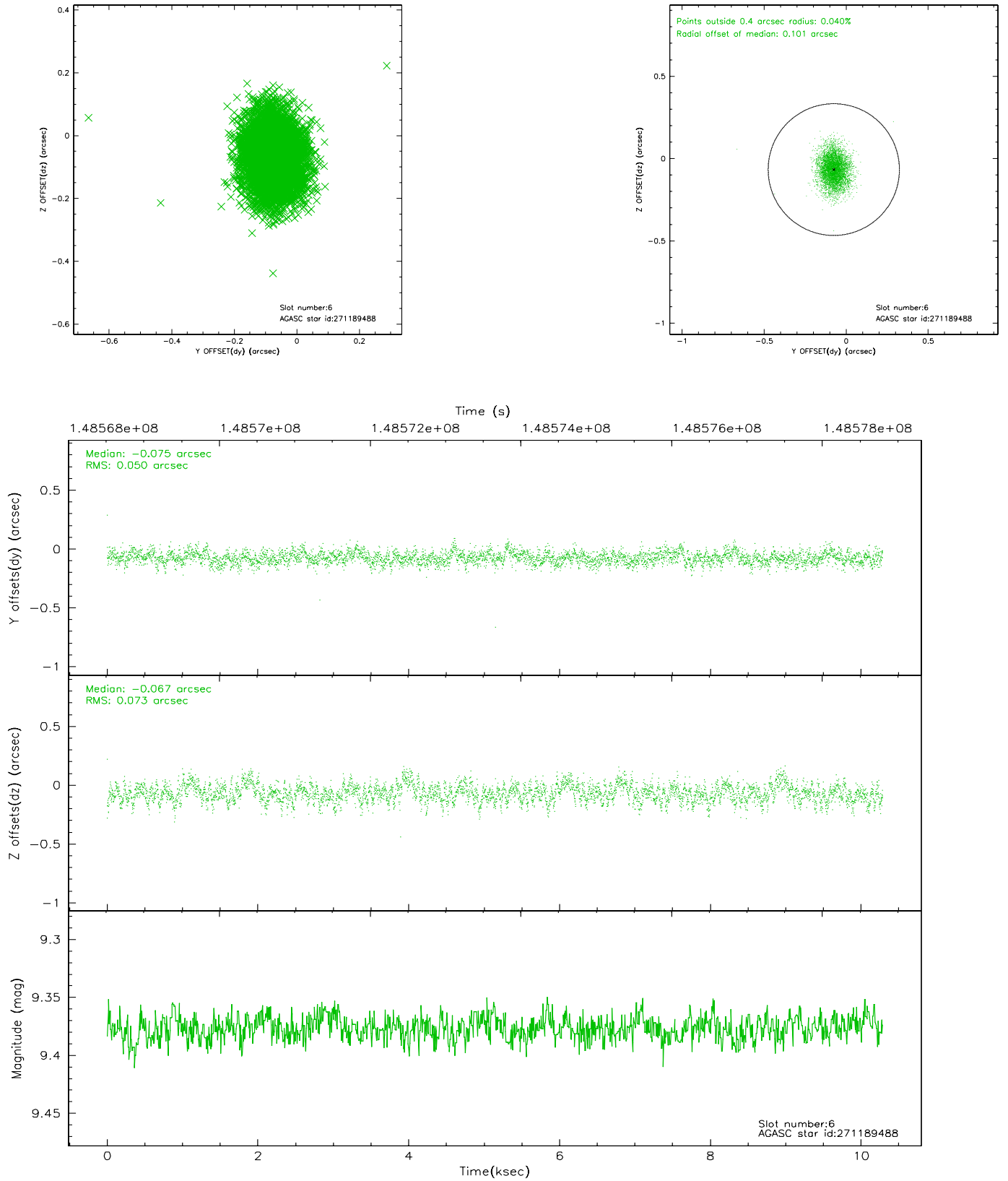
## 2.4.2 Slot 4



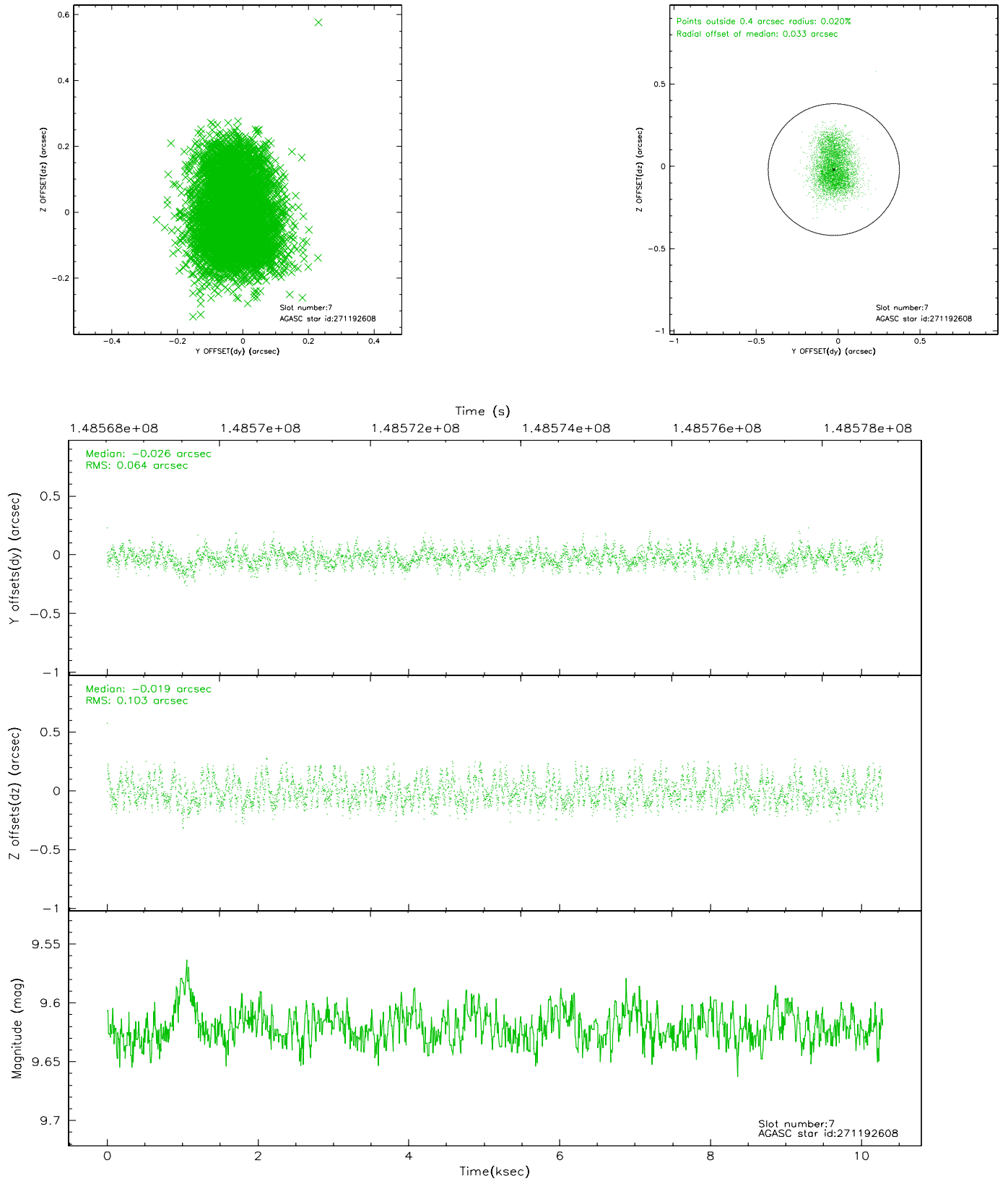
### 2.4.3 Slot 5



## 2.4.4 Slot 6

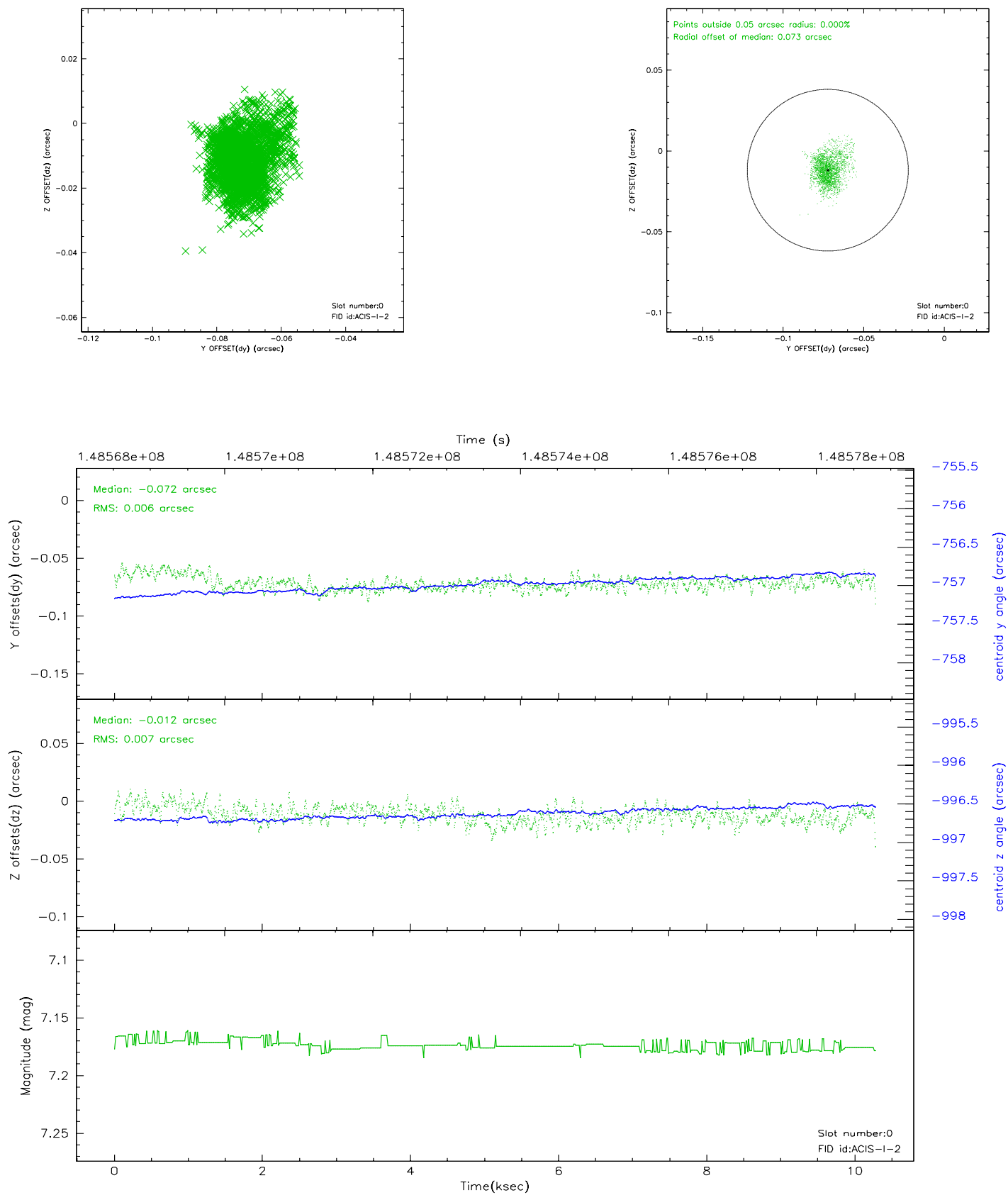


## 2.4.5 Slot 7

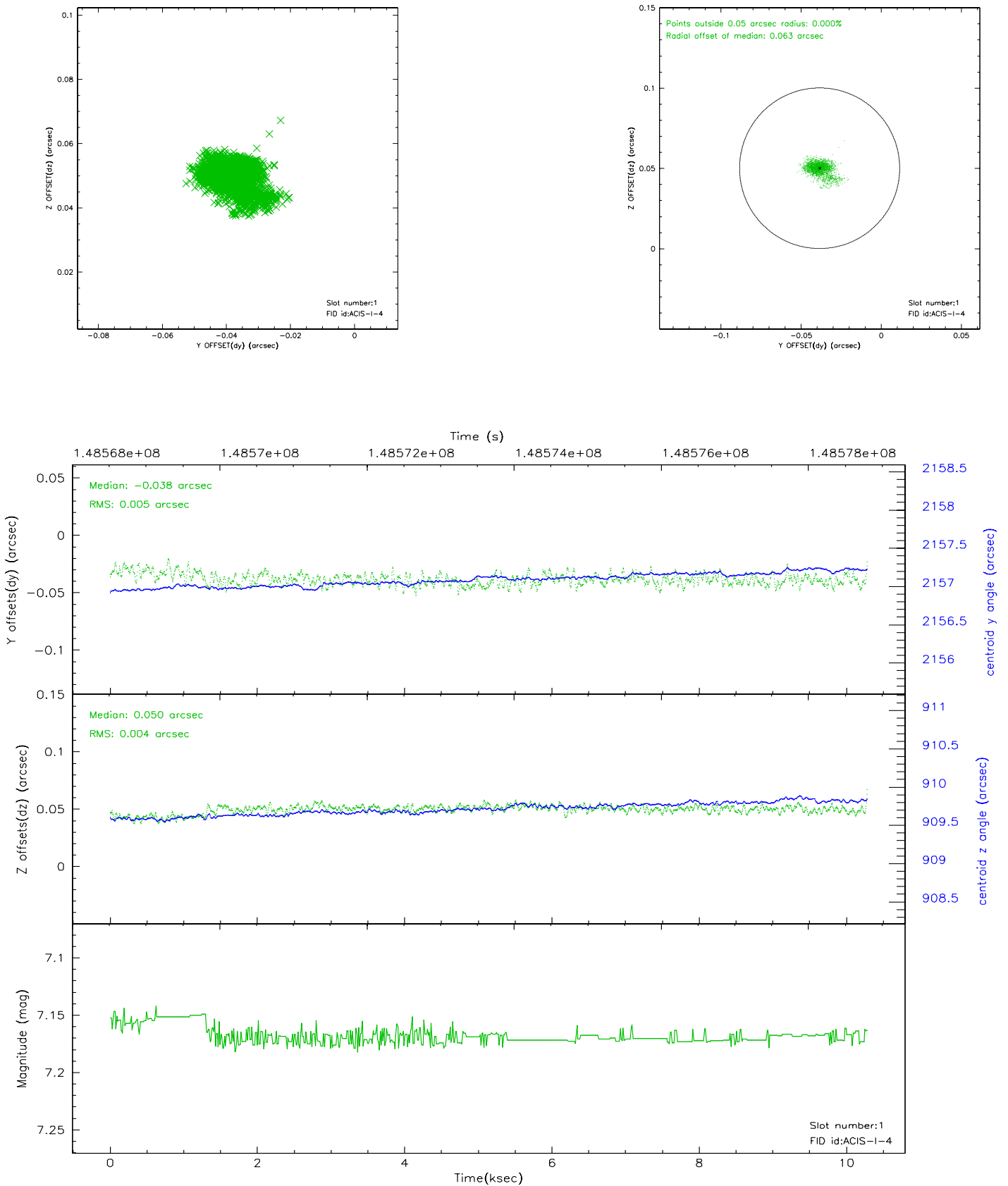


## 2.5 FID Slots

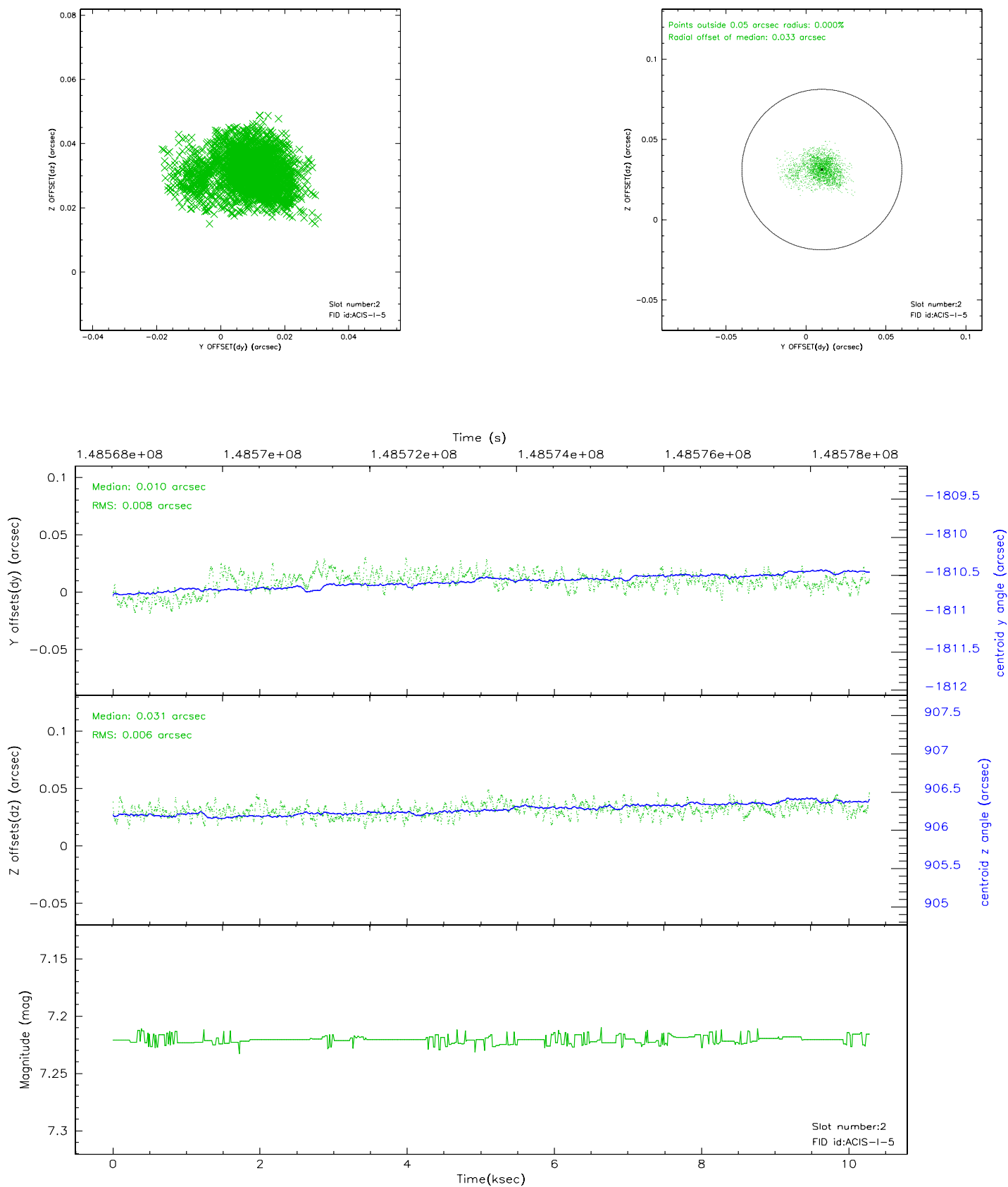
### 2.5.1 Slot 0



## 2.5.2 Slot 1

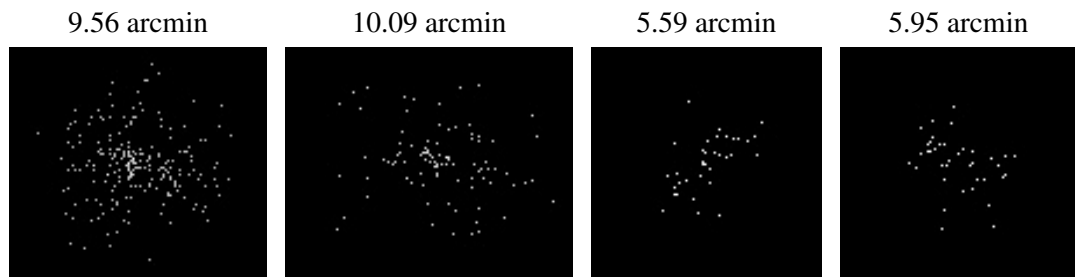


### 2.5.3 Slot 2





### 3 Point Sources



## A Summary

### A.1 Status

V&V Scientist	Jen Lauer
V&V Date (YYYY-MM-DD)	2006.10.04
V&V Edition	1
V&V Disposition and Status	OK
V&V Charge Time	10.118

### A.2 Comments