

V&V Reference Report

L2 ASCDS Version : 8.4.5

Observation 3095 - L2 Version 3
Chandra X-Ray Center

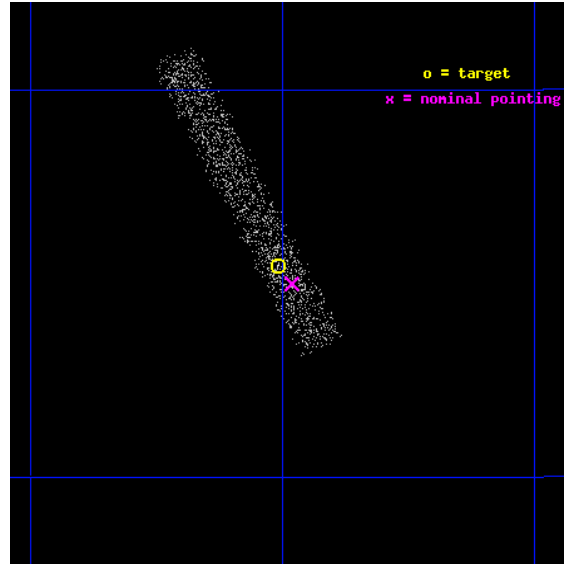
L2 Processing Date : Oct 5 2012

Contents

1	Front	2
2	OBI	3
2.1	OBI	3
2.1.1	Images	3
2.1.2	Bias	3
2.1.3	Parameters	4
2.1.4	Events	4
2.2	Compared Parameters	5
2.3	Aspect	6
2.4	Star Slots	9
2.4.1	Slot 3	9
2.4.2	Slot 4	10
2.4.3	Slot 5	11
2.4.4	Slot 6	12
2.4.5	Slot 7	13
2.5	FID Slots	14
2.5.1	Slot 0	14
2.5.2	Slot 1	15
2.5.3	Slot 2	16
A	Summary	17
A.1	Status	17
A.2	Comments	17

1 Front

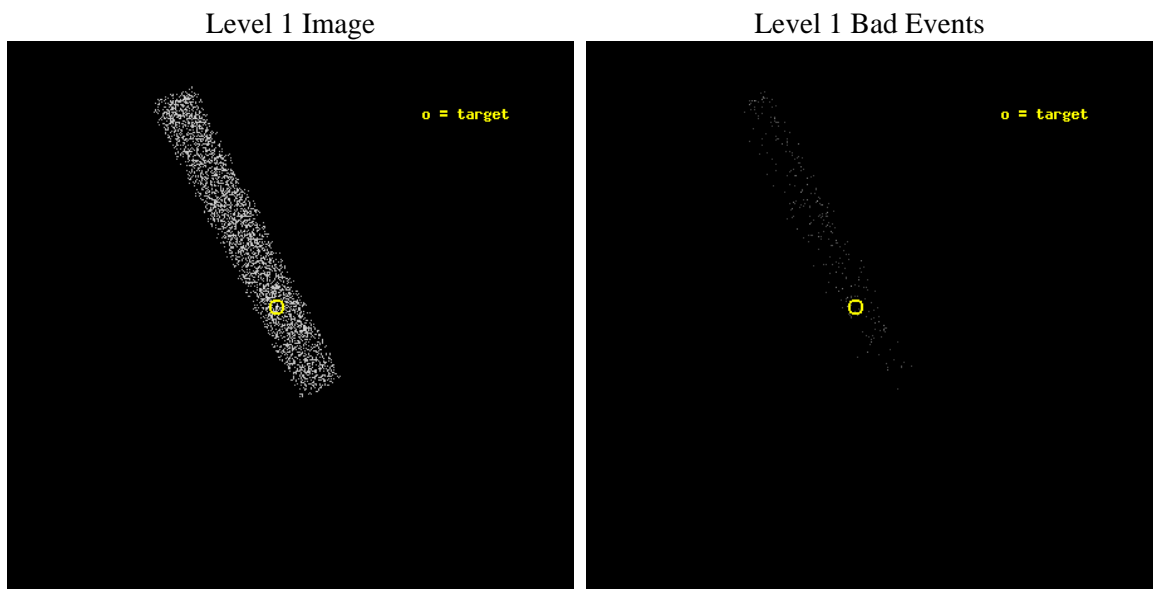
seq_num	700534	Sequence number
obs_id	3095	Observation id
title	THE X-RAY SPECTRA OF RED QUASARS SELECTED FROM 2MASS AND FIRST	Pro
observer	Dr Mark Lacy	Principal investigator
object	FTM1012+2825	Source name
dtcycle	0	
cycle	P	events from which exps? Prim/Second/Both
ra_targ	153.127083	Observer's specified target RA [deg]
dec_targ	28.424222	Observer's specified target Dec [deg]
ra_nom	153.12034006032	Nominal RA [deg]
dec_nom	28.416380870244	Nominal Dec [deg]
roll_nom	242.71660521218	Nominal Roll [deg]
revision	3	Processing version of data
ontime	3648.4000543356	Sum of GTIs [s]
livetime	3308.9062709374	Livetime [s]
ontime7	3648.4000543356	Sum of GTIs [s]
l2events	1819	Number of level 2 events



2 OBI

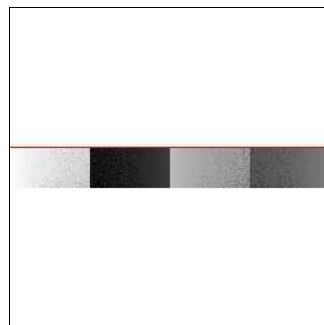
2.1 OBI

2.1.1 Images



2.1.2 Bias

Chip 7



2.1.3 Parameters

obi_num	1	Obi number	sched_exp_time	3500.000000	[s] Scheduled observation exposure time
ascdsver	8.4.5	Processing system revision	ontime	3648.4000543356	Sum of GTIs [s]
caldsver	4.5.2	 	ontime7	3648.4000543356	Sum of GTIs [s]
date	2012-10-05T16:31:24	Date and time of file creation	l1events	5112	Number of level 1 events
revision	3	Processing version of data			

2.1.4 Events

	ccd 7
level 1 events	5112
rejected events	3219
rejected %	62%

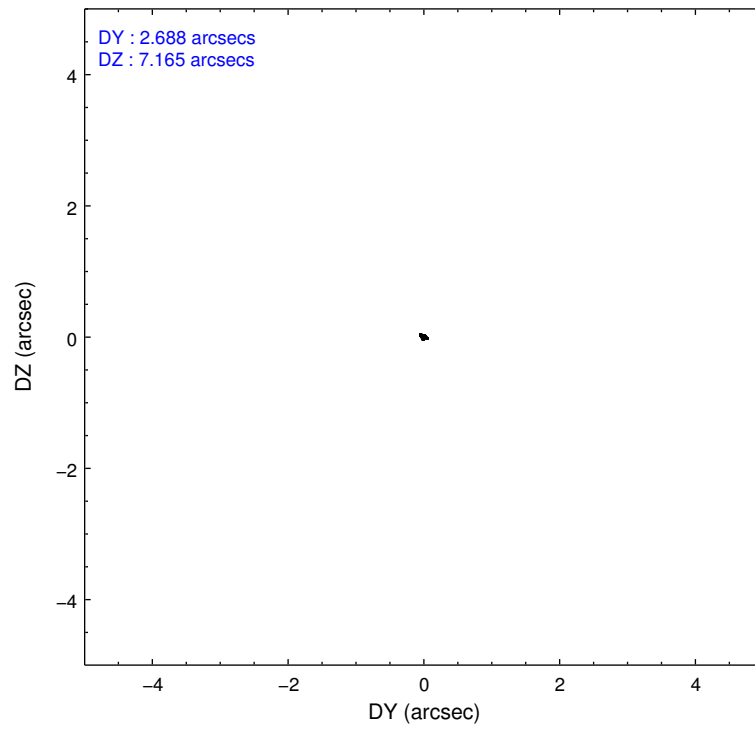
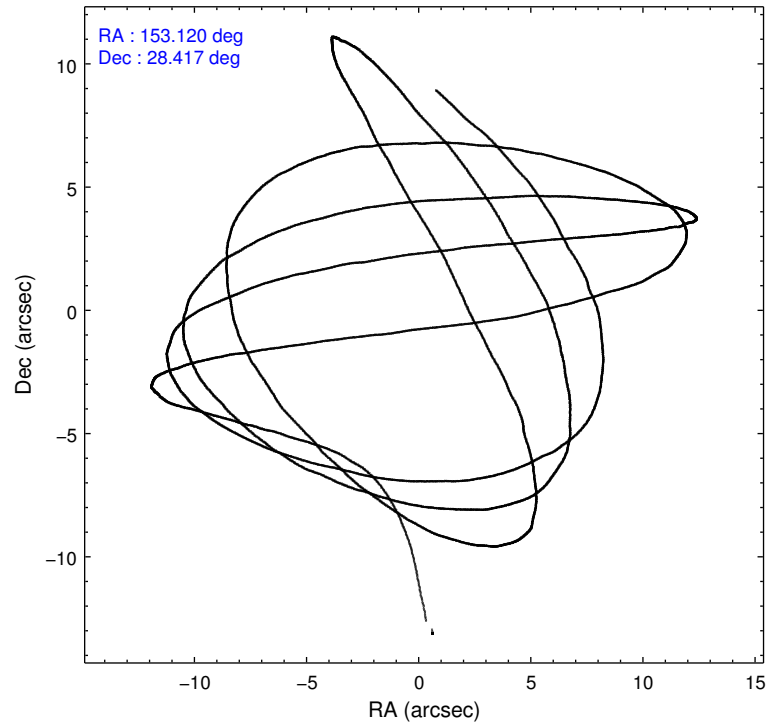
	ccd 7
grade 0 events	246
	4%
grade 1 events	2
	0%
grade 2 events	422
	8%
grade 3 events	295
	5%
grade 4 events	307
	6%
grade 5 events	491
	9%
grade 6 events	1111
	21%
grade 7 events	2238
	43%

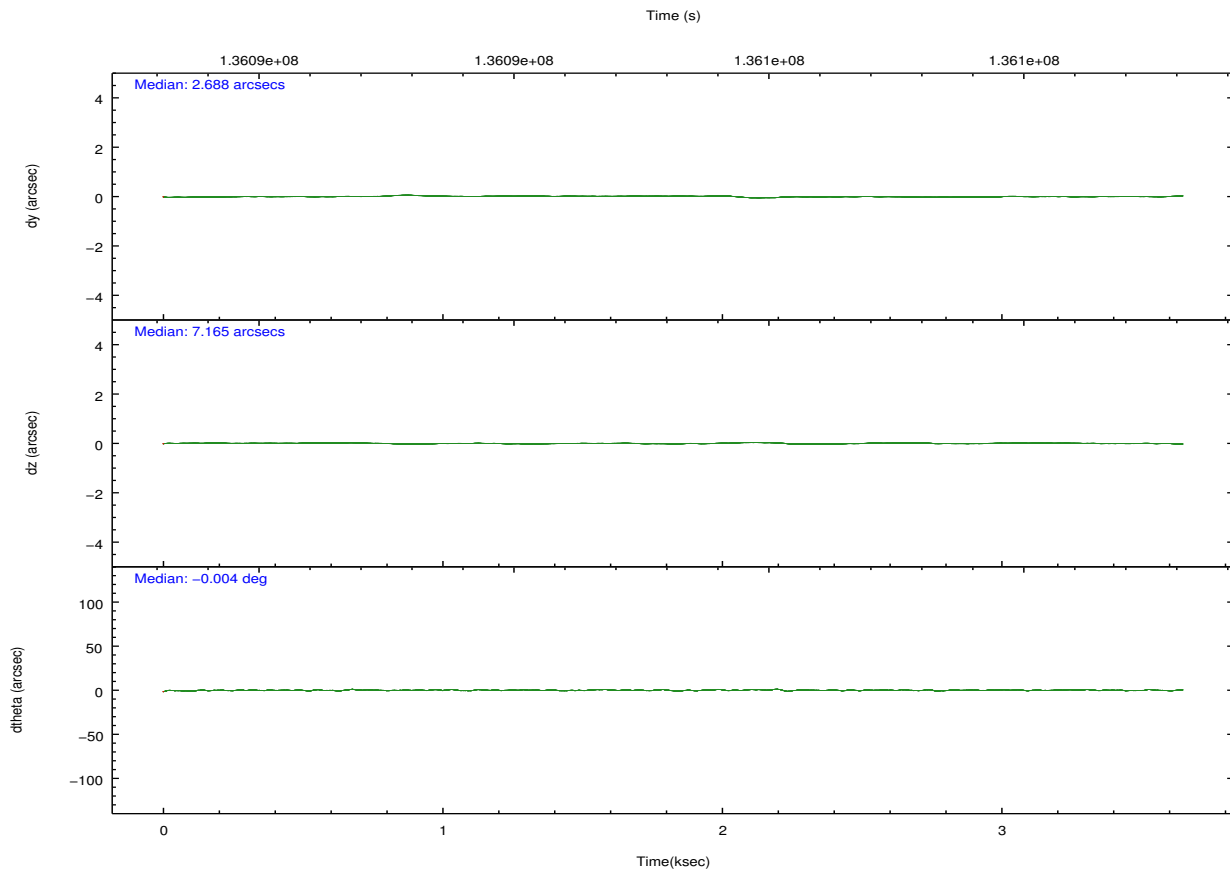
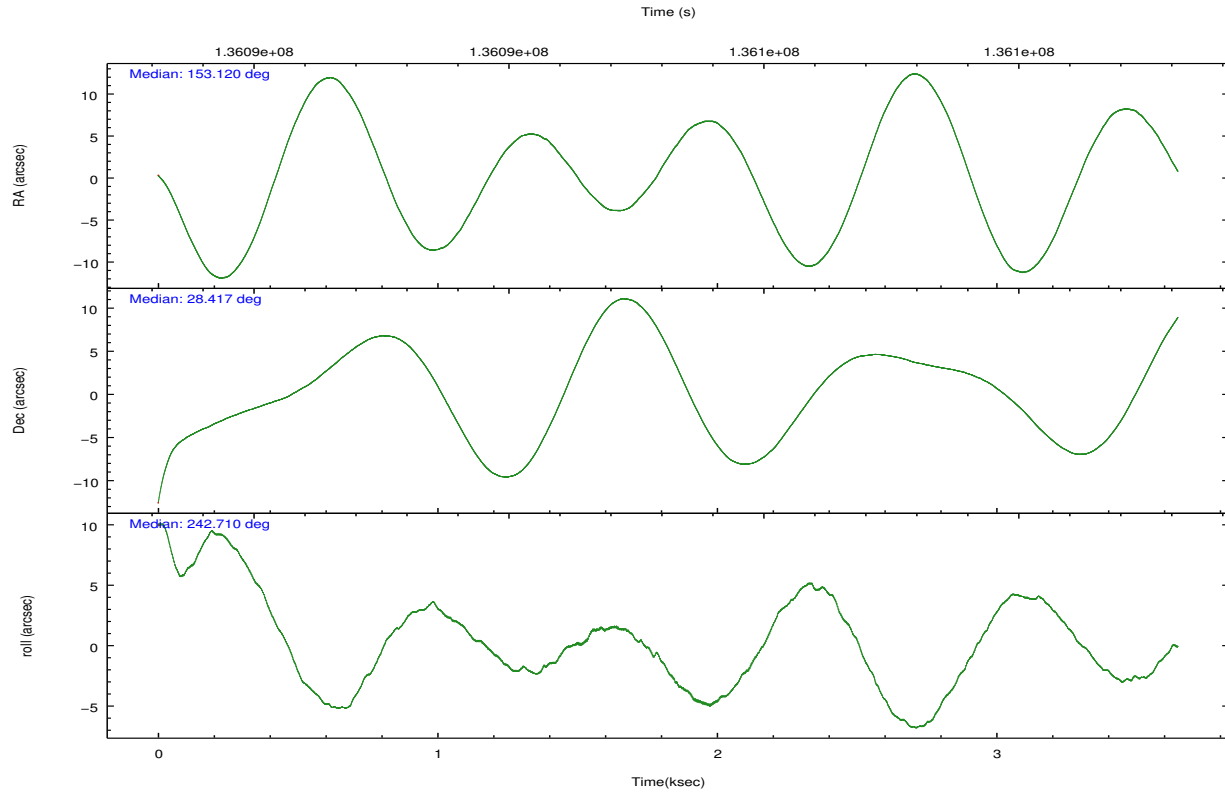
2.2 Compared Parameters

Parameter	Planned	Actual
Instrument	ACIS	ACIS
Detector	ACIS-7	ACIS-7
Grating	NONE	NONE
Data mode	FAINT	FAINT
Observation mode	POINTING	POINTING
[deg] Pointing RA	153.118516	153.1203400603166
[deg] Pointing Dec	28.443716	28.41638087024358
[deg] Pointing Roll	242.560812	242.7166052121805
[mm] SIM focus pos	-0.684267	-0.6828225247311905
[mm] SIM defocus	0	0.001444936568705701
[mm] SIM translation stage pos	-190.132523	-190.1400660498719
[mm] SIM translation stage offset	0	0.00754346686406393
[s] Observation start time (MET)	136092948.184000	136091834.8355
Observation start date	2002-04-25T03:34:44	2002-04-25T03:17:14
[s] Observation end time (MET)	136096448.184000	136096908.58571
Observation end date	2002-04-25T04:33:04	2002-04-25T04:41:48
Read mode	TIMED	TIMED

Parameter	Planned	Actual
Obspar format version number	7	7
Obspar file type	PREDICTED	ACTUAL
Obspar update status	NONE	UPDATED
Number of optional ACIS chips dropped	0	0
On-chip summing requested	N	N
Subarray requested	CUSTOM	1/8
Subarray start row	449	449
Subarray row count	128	128
Alternating exposures requested	N	N
[s] Primary exposure time	0.000000	0.4

2.3 Aspect



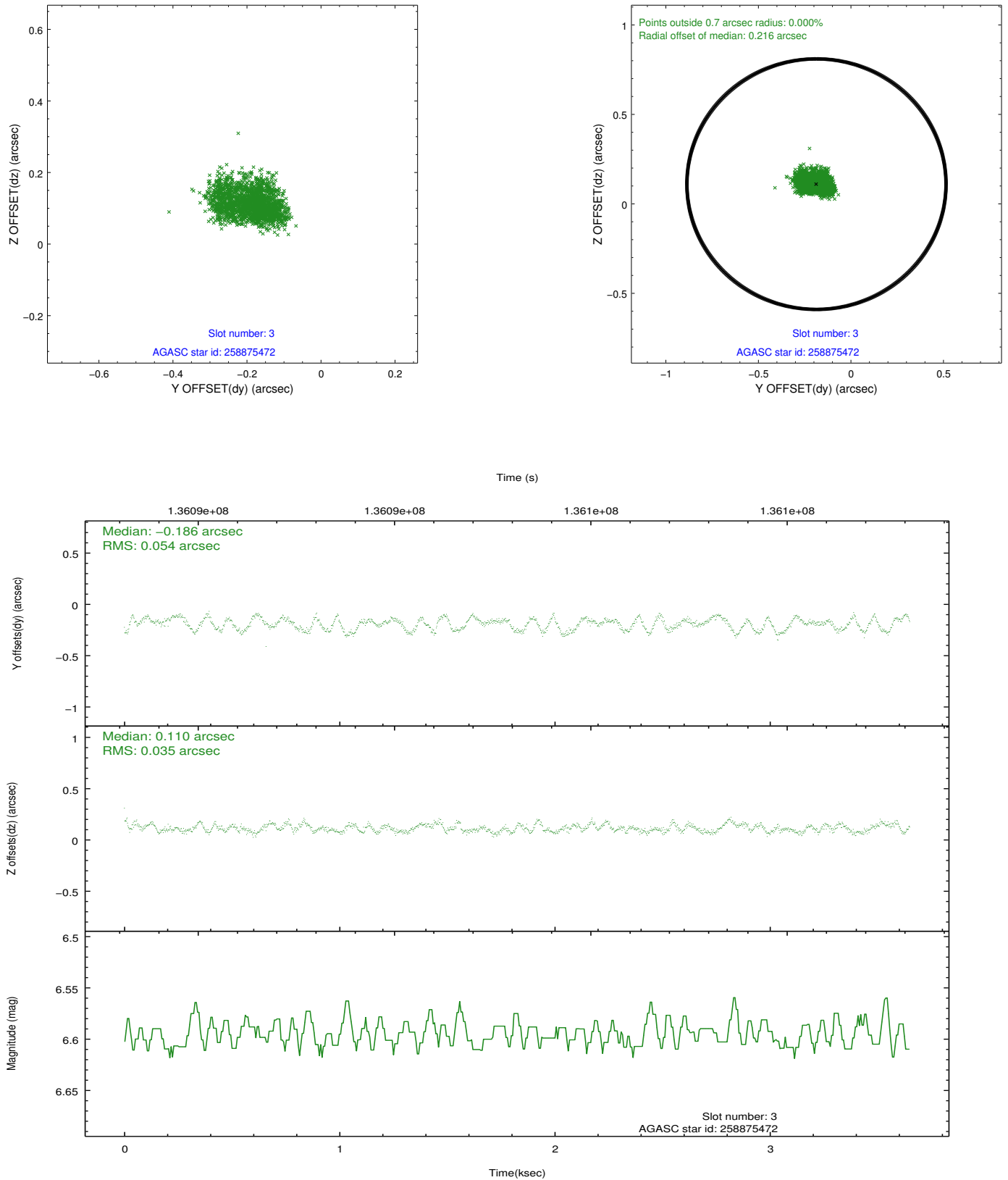


Slot Statistics

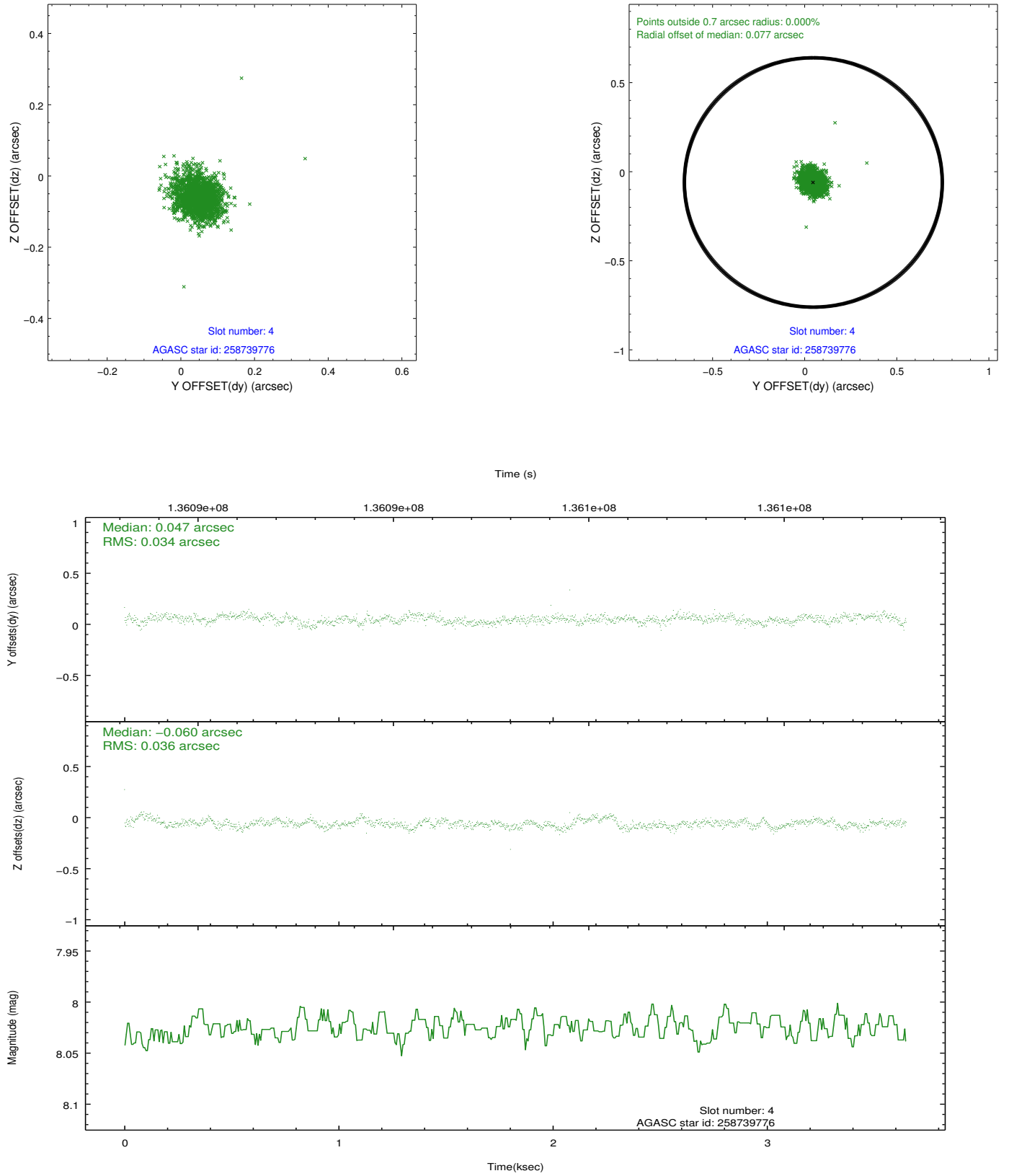
slot	status	id	mag	n_pts	med_dy	med_dz	dr1	dr2	ra	dec	mean_y	mean_z
0	FID	ACIS-S-2	7.11	891	-0.012	0.007	0.007	0.012	0.000000	0.000000	-755.32	-1728.33
1	FID	ACIS-S-4	7.20	891	-0.044	0.004	0.005	0.010	0.000000	0.000000	2157.13	178.38
2	FID	ACIS-S-5	7.24	891	0.024	-0.002	0.006	0.011	0.000000	0.000000	-1805.92	173.99
3	GUIDE	258875472	6.59	1781	-0.186	0.110	0.070	0.106	154.117012	28.682484	-2227.94	2396.40
4	GUIDE	258739776	8.03	1781	0.047	-0.060	0.051	0.084	152.896774	27.842666	2243.91	371.84
5	GUIDE	258739048	8.69	1780	0.130	-0.013	0.062	0.100	152.605887	28.191945	1552.40	-1027.14
6	GUIDE	258875632	9.05	1780	-0.035	0.101	0.069	0.112	153.546222	28.701193	-1446.32	769.63
7	GUIDE	258740656	9.28	1780	0.059	-0.140	0.091	0.149	152.588186	28.394222	928.27	-1409.93

2.4 Star Slots

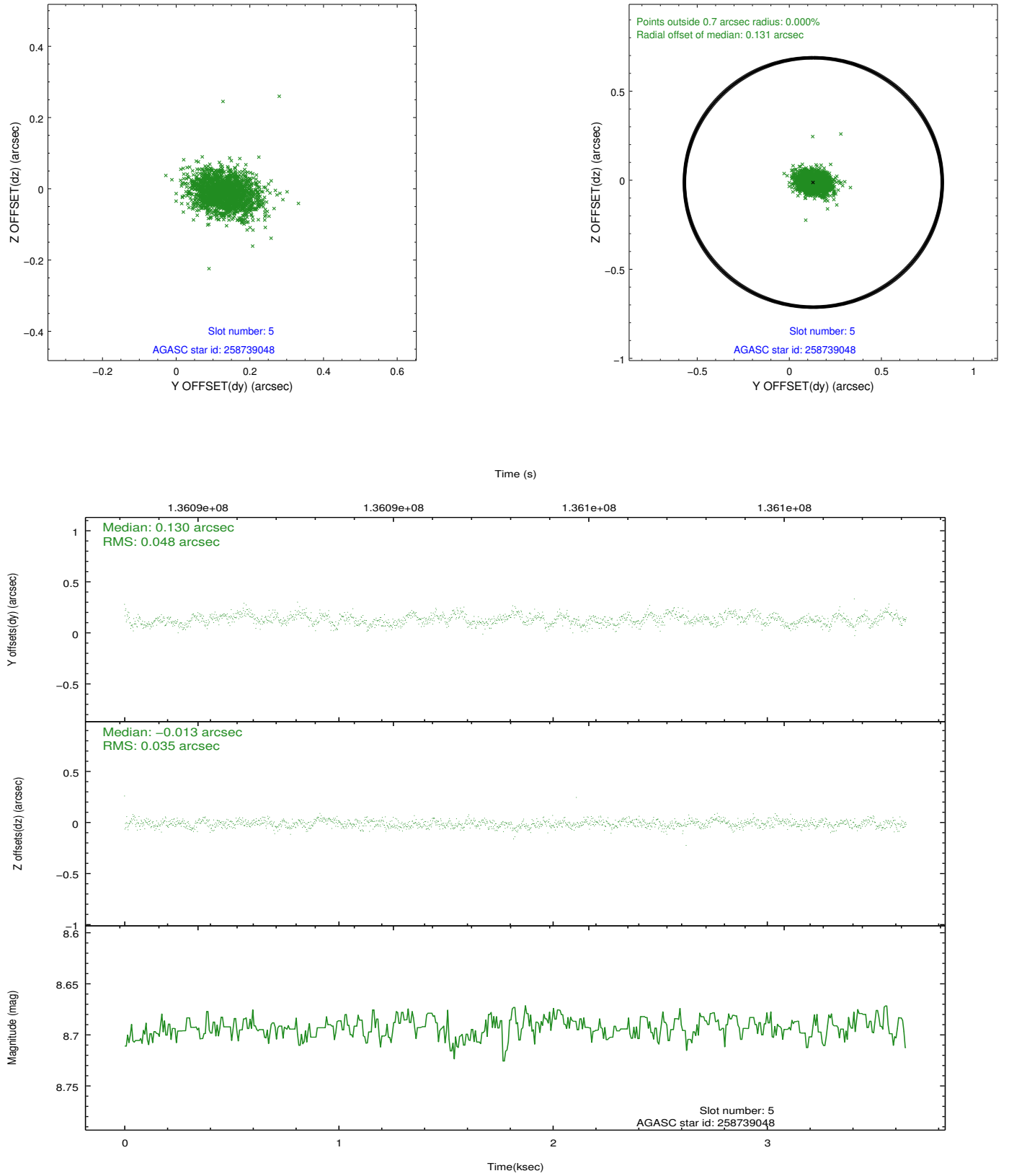
2.4.1 Slot 3



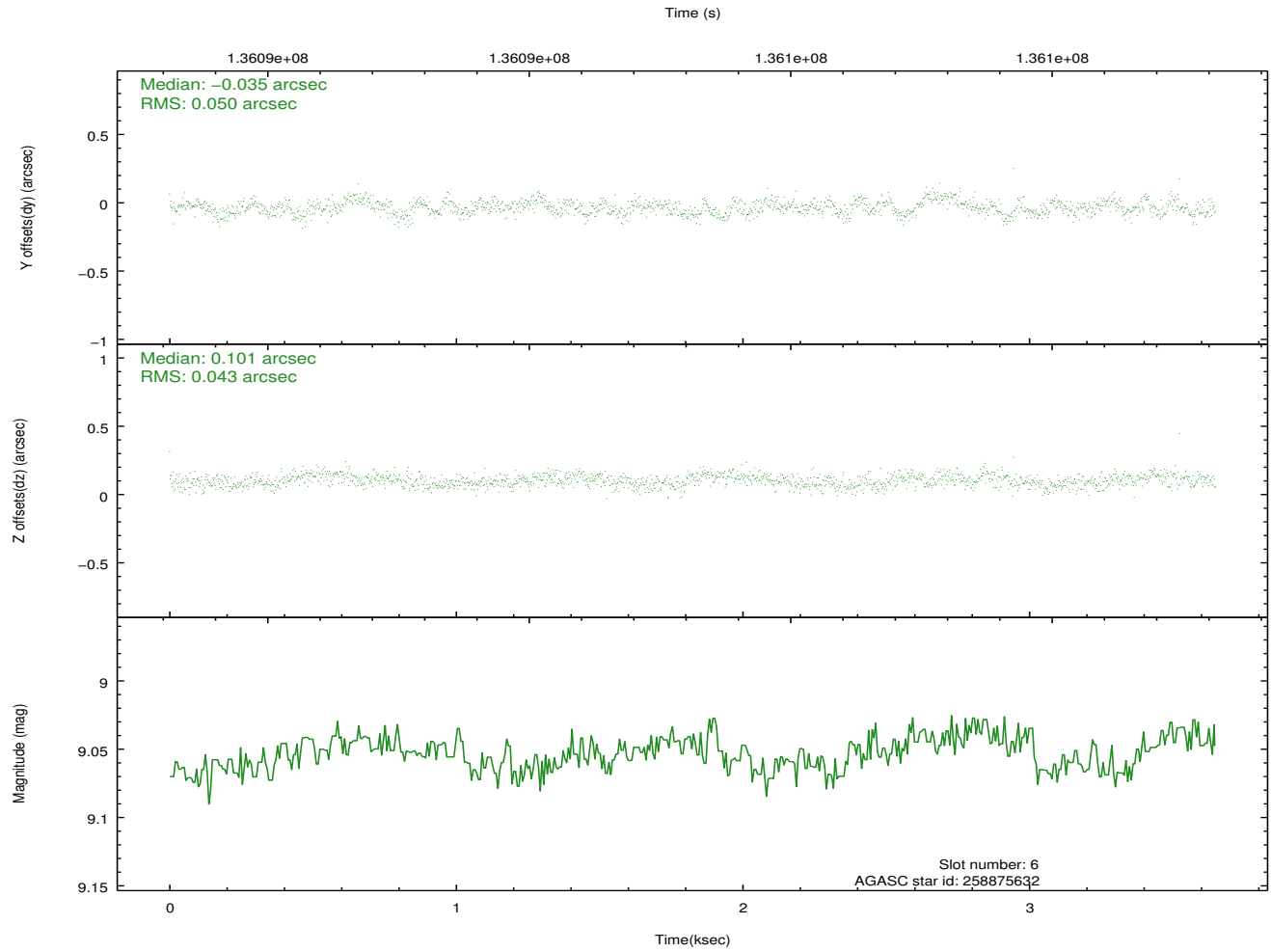
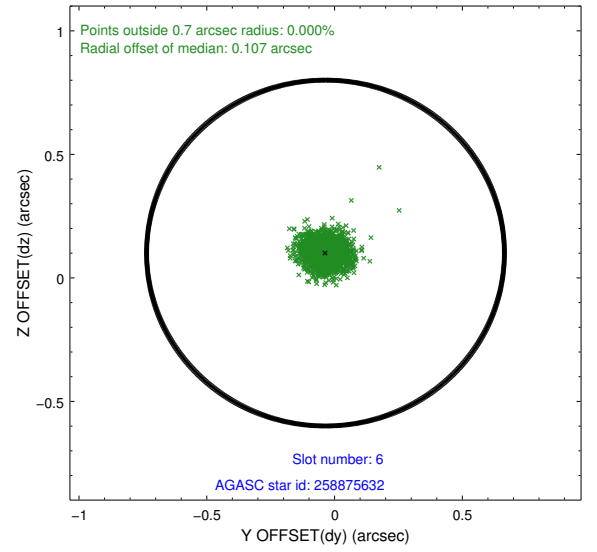
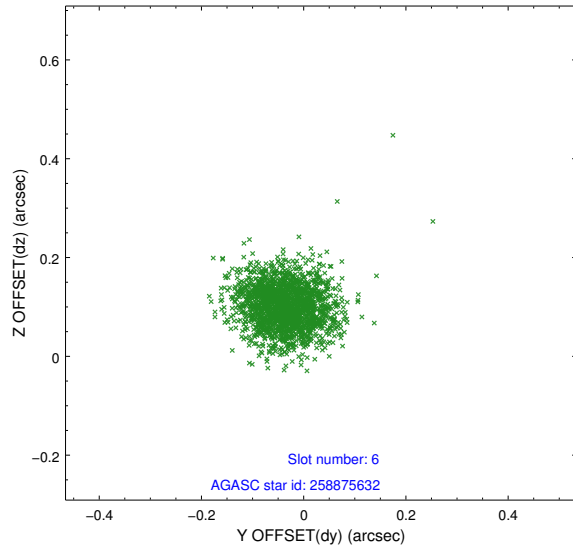
2.4.2 Slot 4



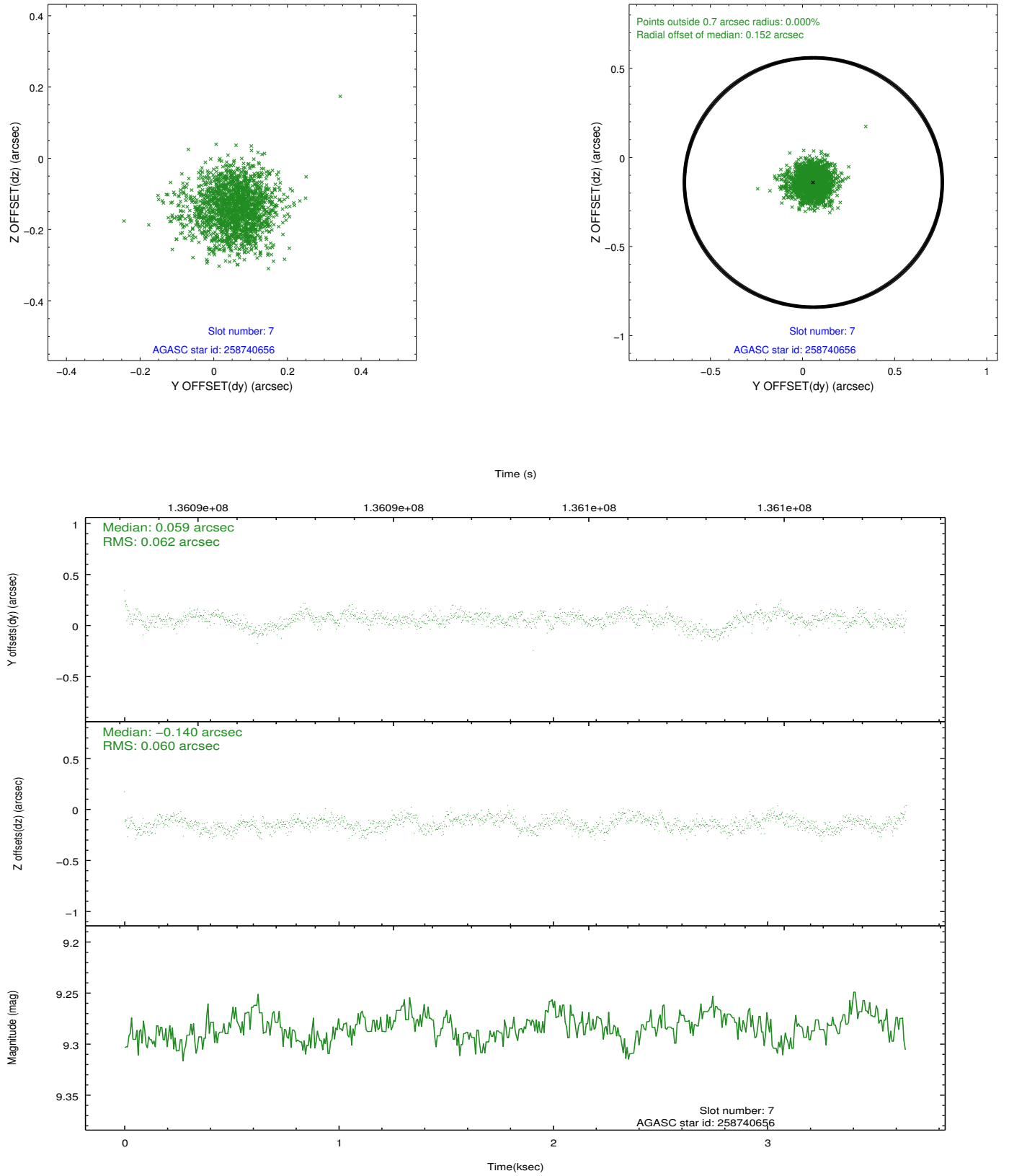
2.4.3 Slot 5



2.4.4 Slot 6

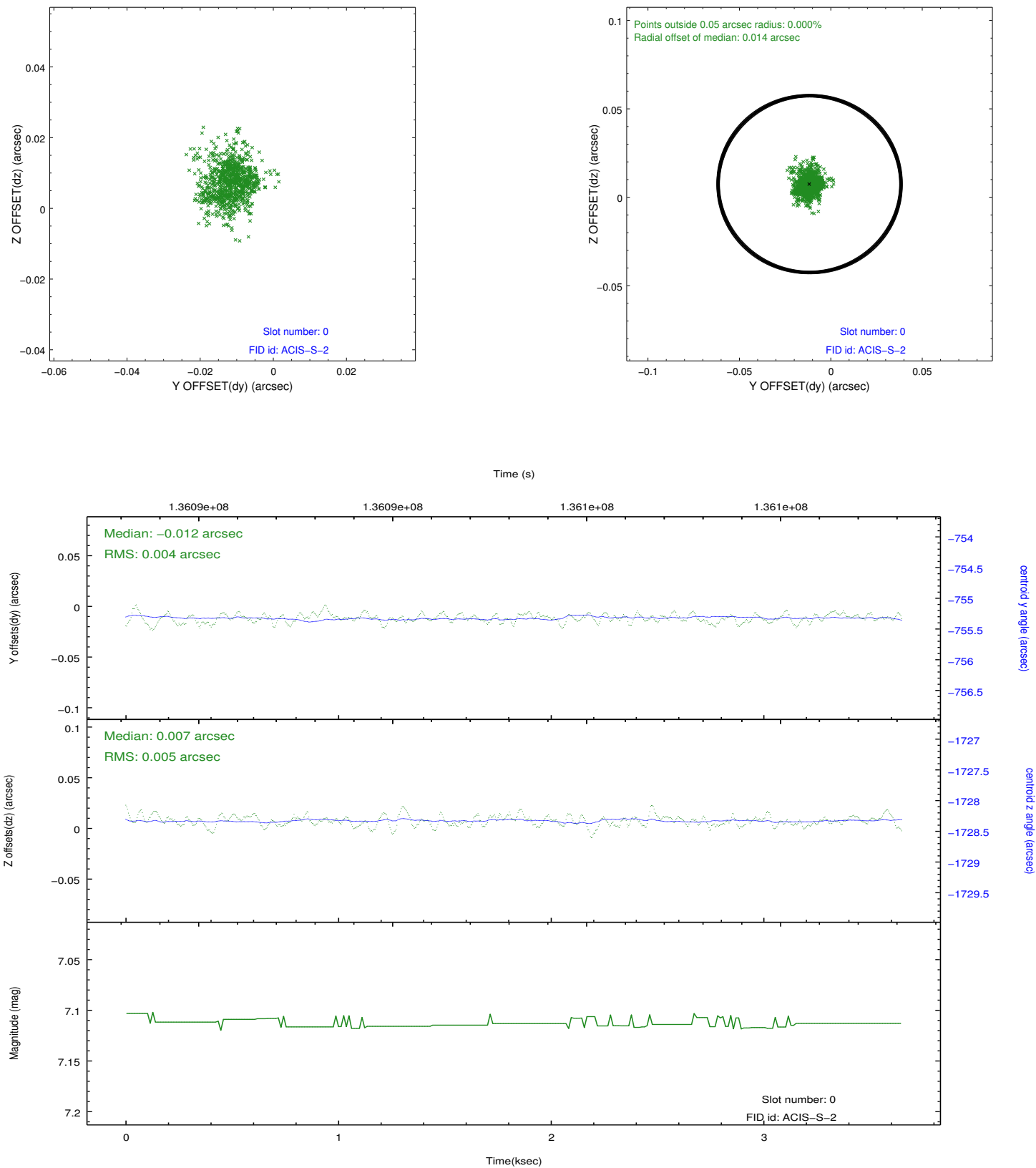


2.4.5 Slot 7

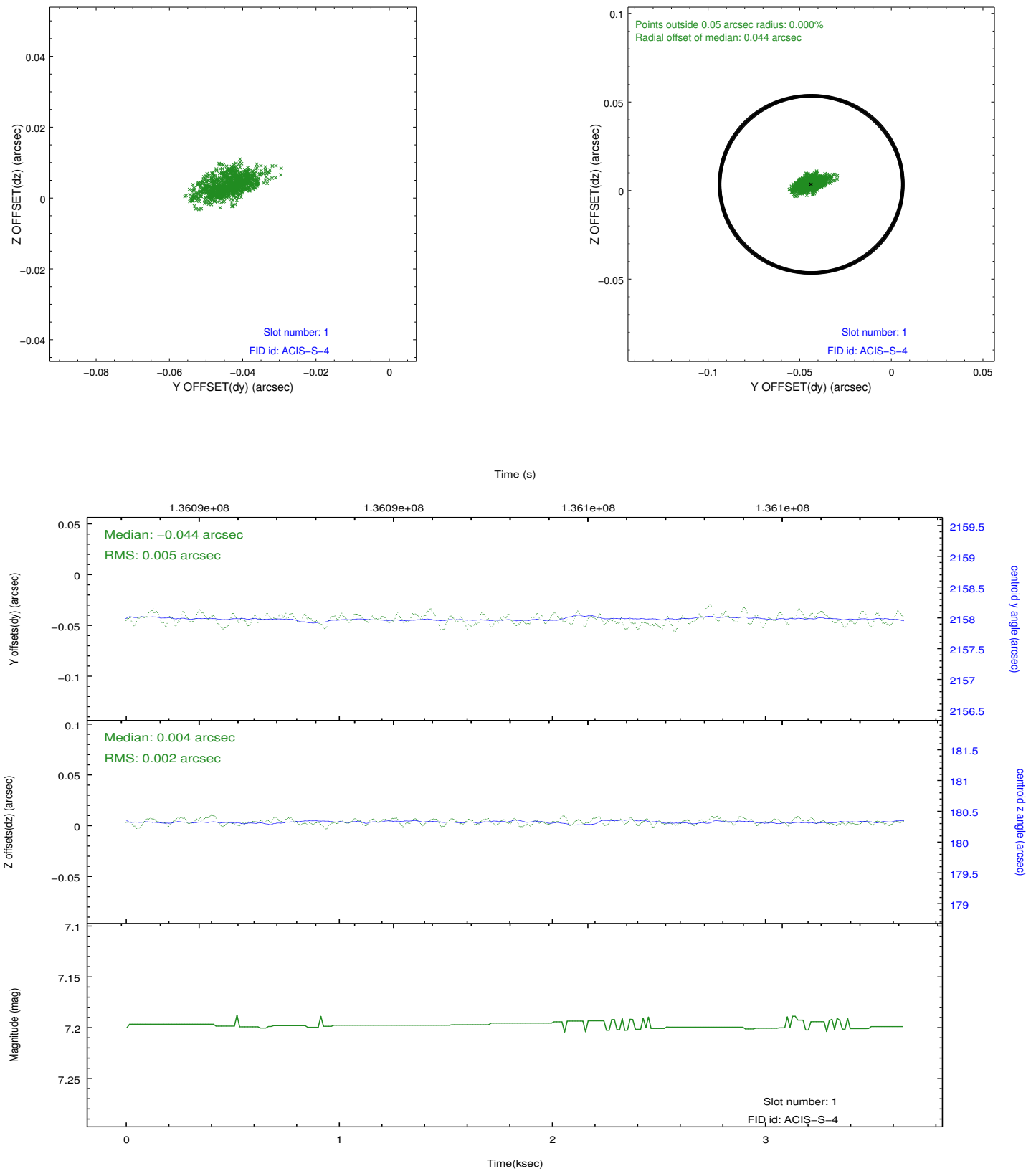


2.5 FID Slots

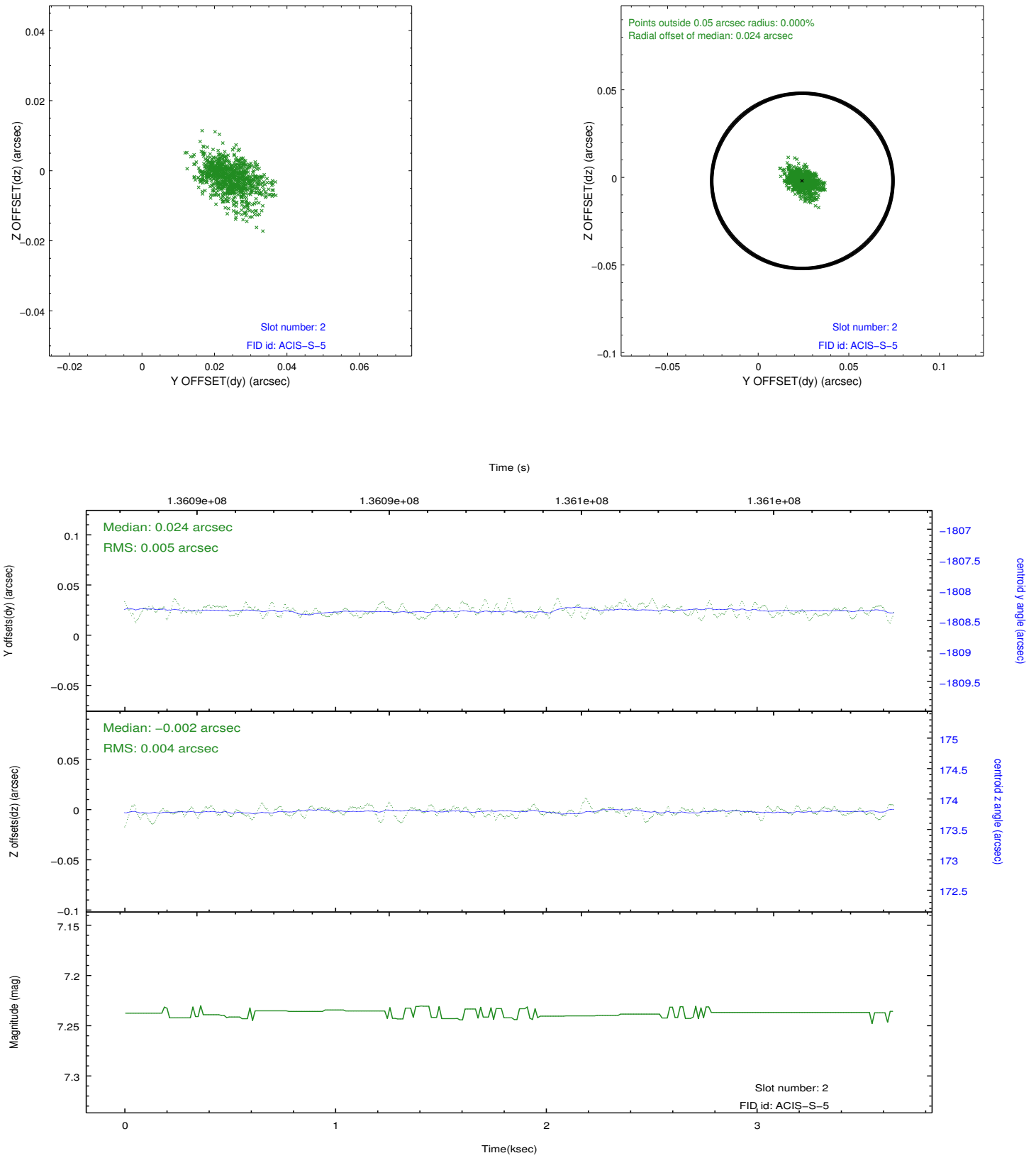
2.5.1 Slot 0



2.5.2 Slot 1



2.5.3 Slot 2



A Summary

A.1 Status

V&V Scientist	Beth Sundheim
V&V Date (YYYY-MM-DD)	2012.10.11
V&V Edition	1
V&V Disposition and Status	OK
V&V Charge Time	3.648

A.2 Comments