

# V&V Reference Report

## L2 ASCDS Version : 8.4.5

Observation 2975 - L2 Version 3  
Chandra X-Ray Center

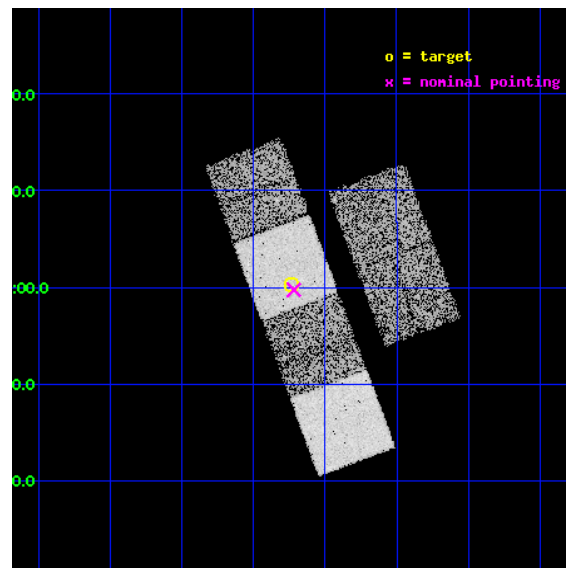
L2 Processing Date : Oct 11 2012

## Contents

<b>1</b>	<b>Front</b>	<b>2</b>
<b>2</b>	<b>OBI</b>	<b>3</b>
2.1	OBI . . . . .	3
2.1.1	Images . . . . .	3
2.1.2	Bias . . . . .	3
2.1.3	Parameters . . . . .	4
2.1.4	Events . . . . .	4
2.2	Compared Parameters . . . . .	5
2.3	Aspect . . . . .	6
2.4	Star Slots . . . . .	9
2.4.1	Slot 3 . . . . .	9
2.4.2	Slot 4 . . . . .	10
2.4.3	Slot 5 . . . . .	11
2.4.4	Slot 6 . . . . .	12
2.4.5	Slot 7 . . . . .	13
2.5	FID Slots . . . . .	14
2.5.1	Slot 0 . . . . .	14
2.5.2	Slot 1 . . . . .	15
2.5.3	Slot 2 . . . . .	16
<b>A</b>	<b>Summary</b>	<b>17</b>
A.1	Status . . . . .	17
A.2	Comments . . . . .	17

# 1 Front

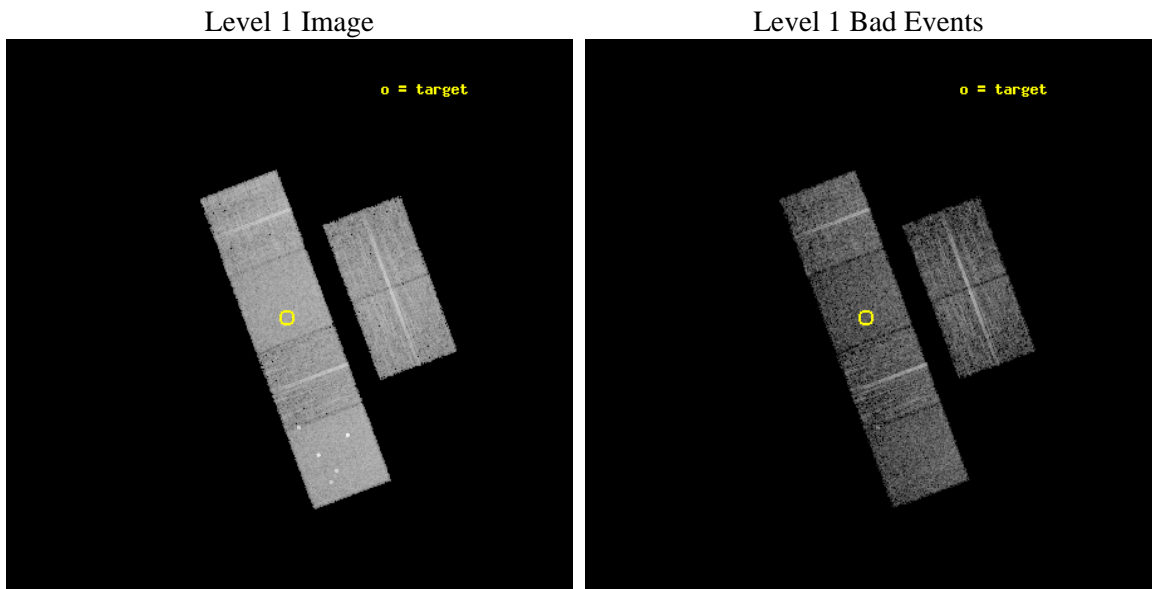
seq_num	700414	Sequence number
obs_id	2975	Observation id
title	A COMPLETE X-RAY SAMPLE OF BROAD ABSORPTION LINE QSOS	Proposal tit
observer	Professor Gordon Garmire	Principal investigator
object	LBQS 1314+0116 ALTERN	Source name
dtcycle	0	&#160
cycle	P	events from which exps? Prim/Second/Both
ra_targ	199.309167	Observer's specified target RA [deg]
dec_targ	1.003611	Observer's specified target Dec [deg]
ra_nom	199.30440723662	Nominal RA [deg]
dec_nom	0.99571856449548	Nominal Dec [deg]
roll_nom	249.54611904795	Nominal Roll [deg]
revision	3	Processing version of data
ontime	6655.9999752045	Sum of GTIs [s]
livetime	6571.7176957564	Livetime [s]
ontime2	6655.9999752045	Sum of GTIs [s]
ontime3	6655.9999752045	Sum of GTIs [s]
ontime5	6655.9999752045	Sum of GTIs [s]
ontime6	6655.9999752045	Sum of GTIs [s]
ontime7	6655.9999752045	Sum of GTIs [s]
ontime8	6649.5181543529	Sum of GTIs [s]
l2events	70260	Number of level 2 events



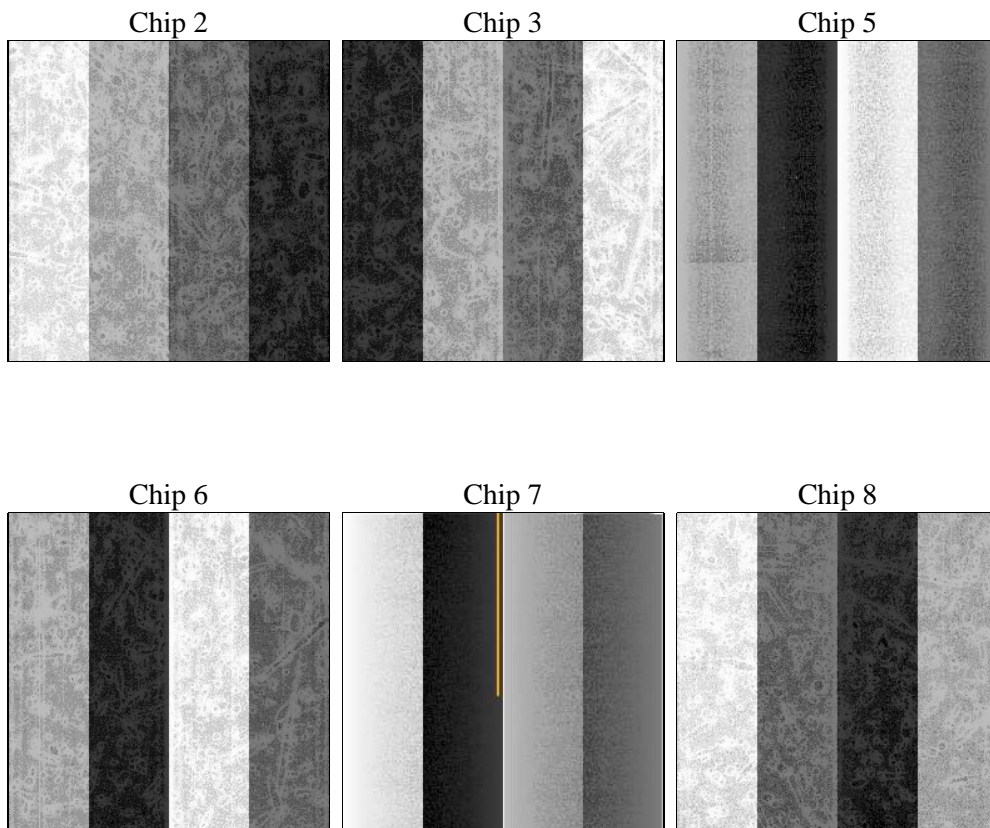
## 2 OBI

### 2.1 OBI

#### 2.1.1 Images



#### 2.1.2 Bias



### 2.1.3 Parameters

obi_num	1	Obi number	sched_exp_time	6900.000000	[s] Scheduled observation exposure time
ascdsver	8.4.5	Processing system revision	ontime	6655.9999752045	Sum of GTIs [s]
caldsver	4.5.2	&#160	ontime2	6655.9999752045	Sum of GTIs [s]
date	2012-10-11T15:44:59	Date and time of file creation	ontime3	6655.9999752045	Sum of GTIs [s]
revision	3	Processing version of data	ontime5	6655.9999752045	Sum of GTIs [s]
			ontime6	6655.9999752045	Sum of GTIs [s]
			ontime7	6655.9999752045	Sum of GTIs [s]
			ontime8	6649.5181543529	Sum of GTIs [s]
			l1events	309115	Number of level 1 events

### 2.1.4 Events

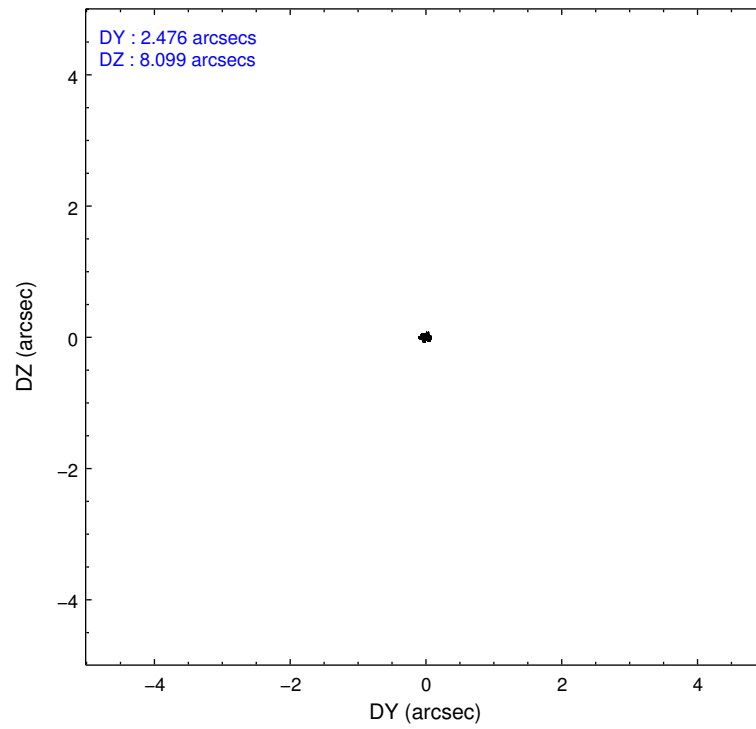
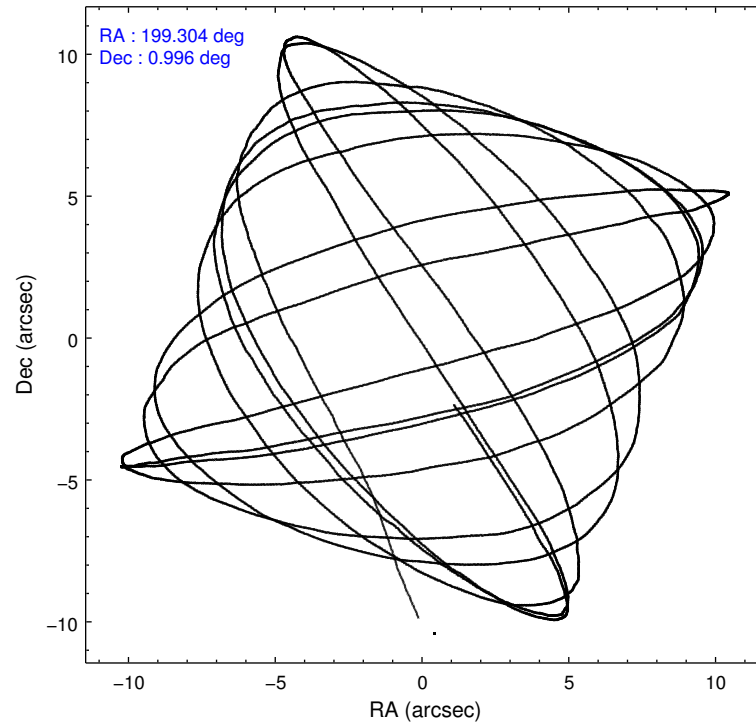
	ccd 2	ccd 3	ccd 5	ccd 6	ccd 7	ccd 8		ccd 2	ccd 3	ccd 5	ccd 6	ccd 7	ccd 8
level 1 events	45647	41414	65308	43643	55869	57234	grade 0 events	2516	2331	5874	2427	2309	4348
rejected events	39990	36114	32966	37968	31899	43761		5%	5%	8%	5%	4%	7%
rejected %	87%	87%	50%	86%	57%	76%	grade 1 events	17	19	127	29	59	38
								0%	0%	0%	0%	0%	0%
							grade 2 events	1263	1116	8823	1153	4807	2735
								2%	2%	13%	2%	8%	4%
							grade 3 events	473	459	1324	527	2168	1643
								1%	1%	2%	1%	3%	2%
							grade 4 events	451	473	1313	506	2141	1538
								0%	1%	2%	1%	3%	2%
							grade 5 events	1499	1669	4712	1807	5262	2320
								3%	4%	7%	4%	9%	4%
							grade 6 events	956	925	15026	1065	12560	3212
								2%	2%	23%	2%	22%	5%
							grade 7 events	38472	34422	28109	36129	26563	41400
								84%	83%	43%	82%	47%	72%

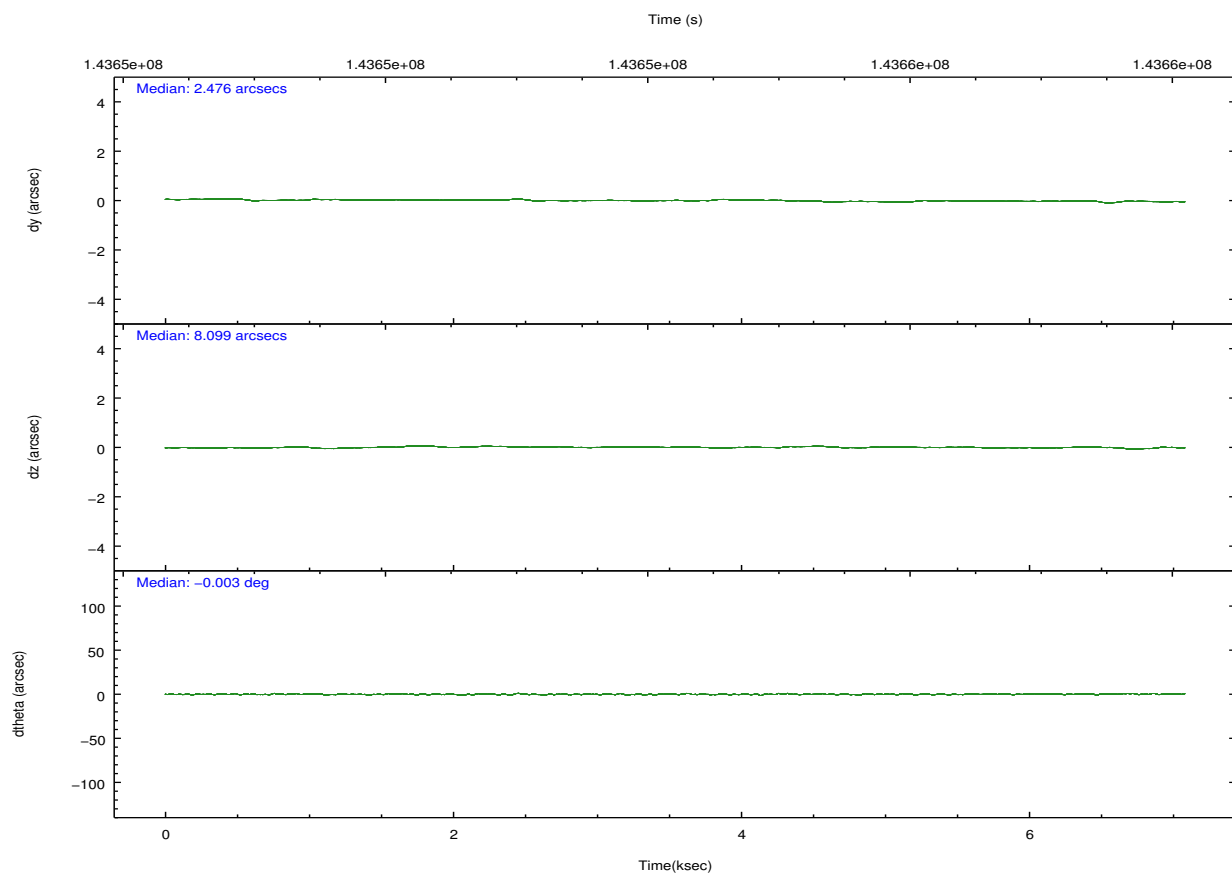
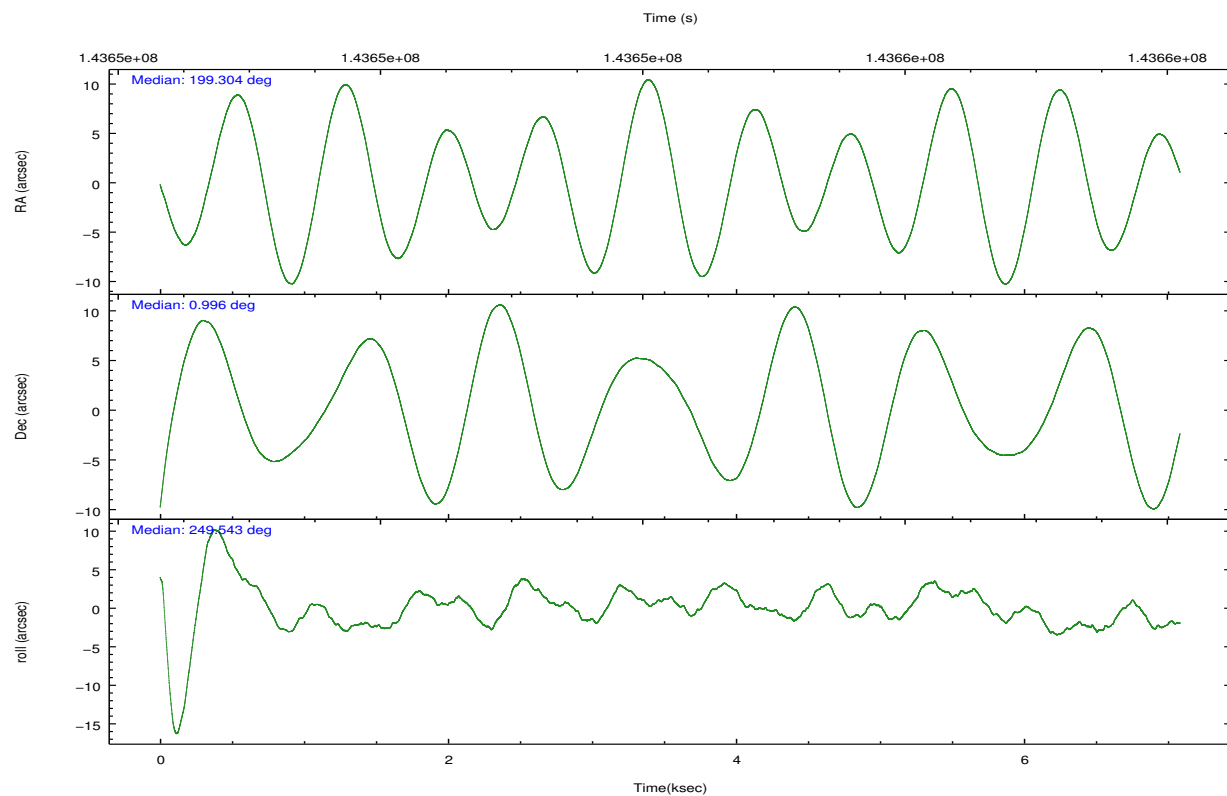


## 2.2 Compared Parameters

Parameter	Planned	Actual	Parameter	Planned	Actual
Instrument	ACIS	ACIS	Obspar format version number	7	7
Detector	ACIS-235678	ACIS-235678	Obspar file type	PREDICTED	ACTUAL
Grating	NONE	NONE	Obspar update status	NONE	UPDATED
Data mode	FAINT	FAINT	Number of optional ACIS chips dropped	0	0
Observation mode	POINTING	POINTING	On-chip summing requested	N	N
[deg] Pointing RA	199.299548	199.3044072366247	Subarray requested	NONE	NONE
[deg] Pointing Dec	1.022542	0.9957185644954774	Alternating exposures requested	N	N
[deg] Pointing Roll	249.389546	249.546119047949	[s] Primary exposure time	0.000000	3.2
[mm] SIM focus pos	-0.684267	-0.6828225247311905			
[mm] SIM defocus	0	0.001444936568705701			
[mm] SIM translation stage pos	-190.132523	-190.1425803651734			
[mm] SIM translation stage offset	0	0.01005778216563158			
[s] Observation start time (MET)	143650852.184000	143650160.0321			
Observation start date	2002-07-21T14:59:48	2002-07-21T14:49:20			
[s] Observation end time (MET)	143657752.184000	143658147.85743			
Observation end date	2002-07-21T16:54:48	2002-07-21T17:02:27			
Read mode	TIMED	TIMED			

## 2.3 Aspect



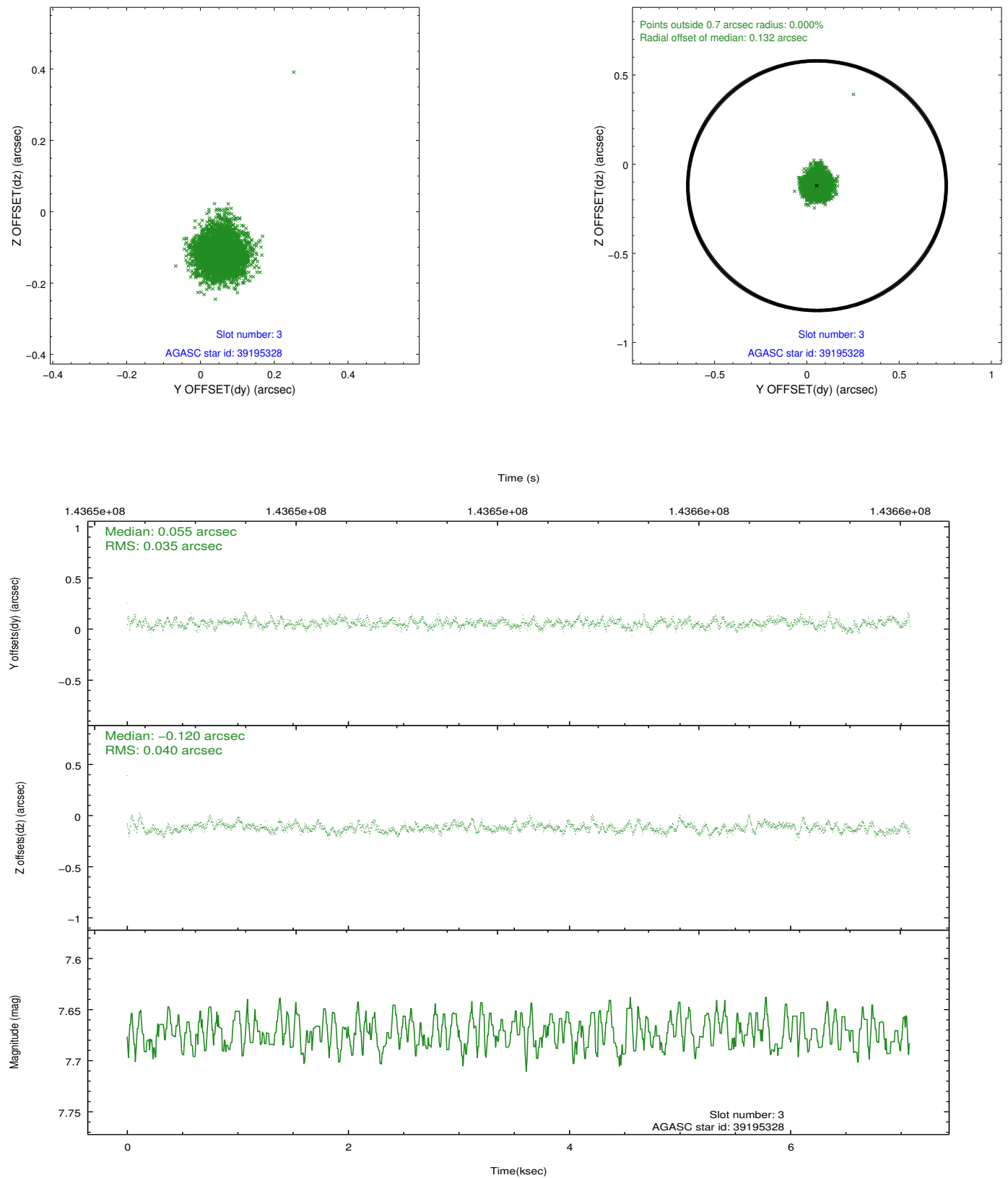


### Slot Statistics

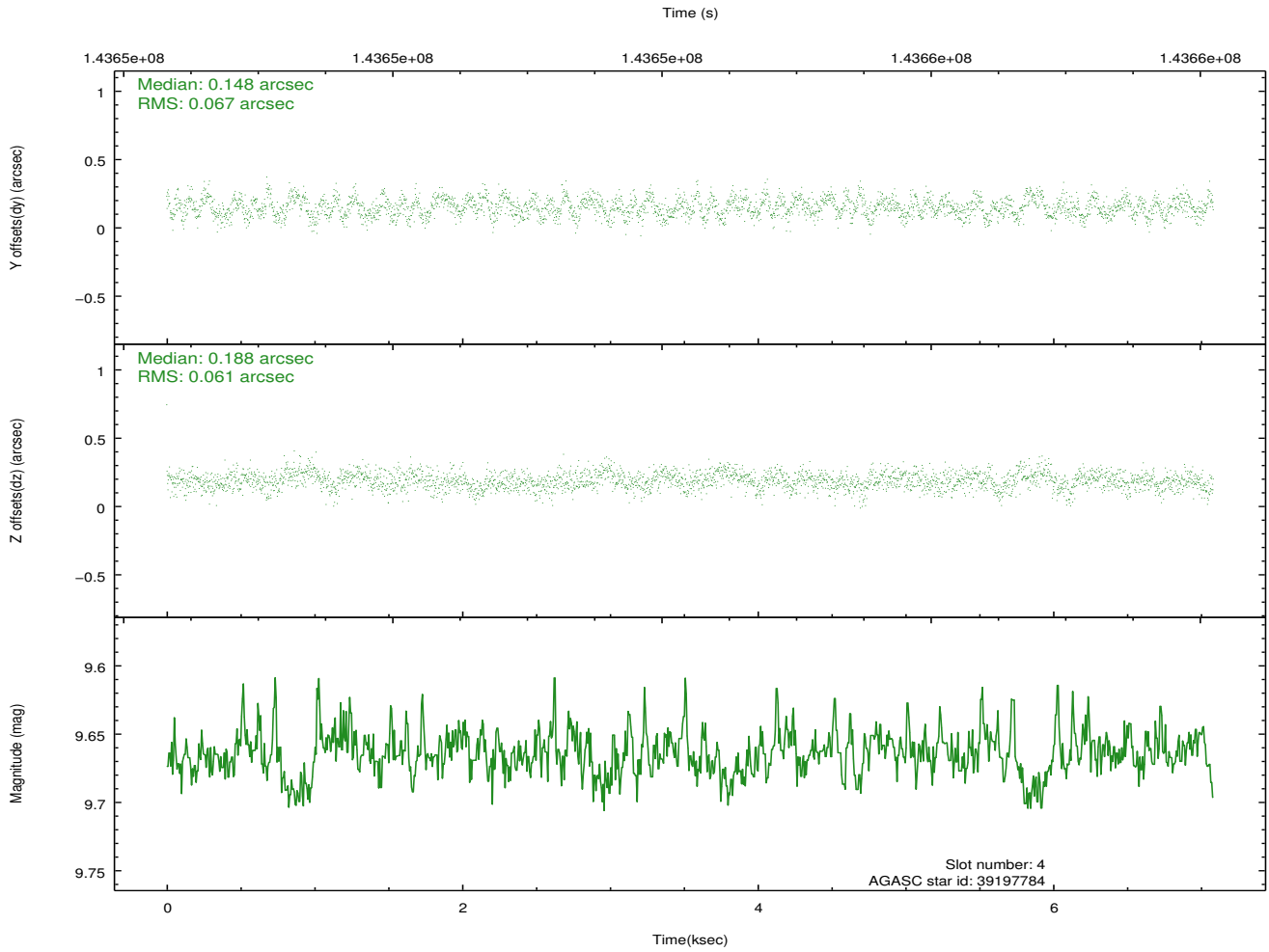
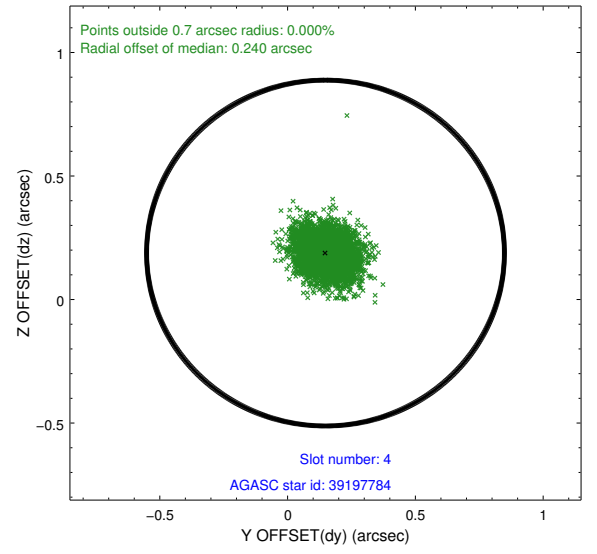
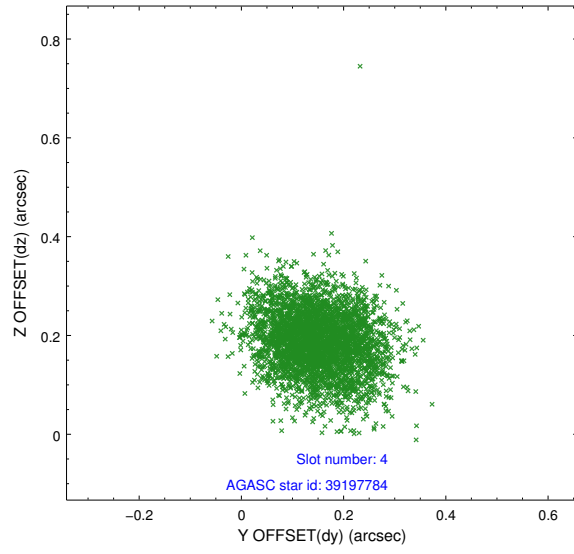
slot	status	id	mag	n_pts	med_dy	med_dz	dr1	dr2	ra	dec	mean_y	mean_z
0	FID	ACIS-S-2	7.11	1727	-0.008	0.001	0.007	0.011	0.000000	0.000000	-755.13	-1729.23
1	FID	ACIS-S-4	7.20	1728	-0.038	0.003	0.005	0.010	0.000000	0.000000	2157.77	178.38
2	FID	ACIS-S-5	7.23	1727	0.014	0.004	0.007	0.011	0.000000	0.000000	-1806.88	173.02
3	GUIDE	39195328	7.67	3455	0.055	-0.120	0.056	0.089	199.216014	1.240233	-626.76	-557.18
4	GUIDE	39197784	9.66	3448	0.148	0.188	0.096	0.153	199.911028	1.264167	-1588.43	1753.79
5	GUIDE	39198032	10.11	3454	0.042	0.110	0.122	0.200	199.364971	0.795073	683.98	509.59
6	GUIDE	39198152	7.40	3454	-0.223	0.015	0.072	0.110	199.619926	1.246395	-1159.27	796.08
7	GUIDE	39196624	9.66	3453	-0.027	-0.189	0.119	0.194	198.819782	1.675629	-1592.28	-2443.57

## 2.4 Star Slots

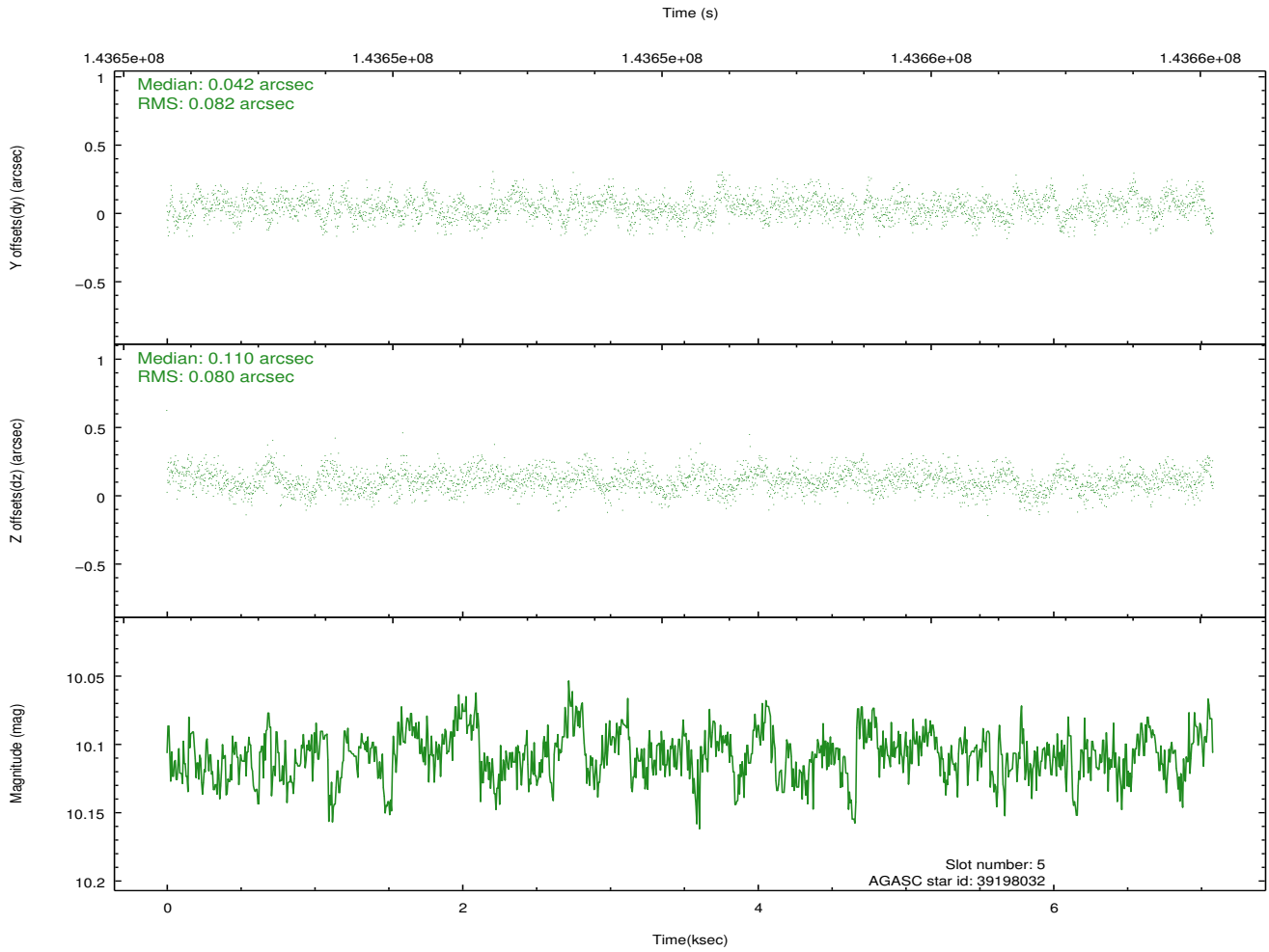
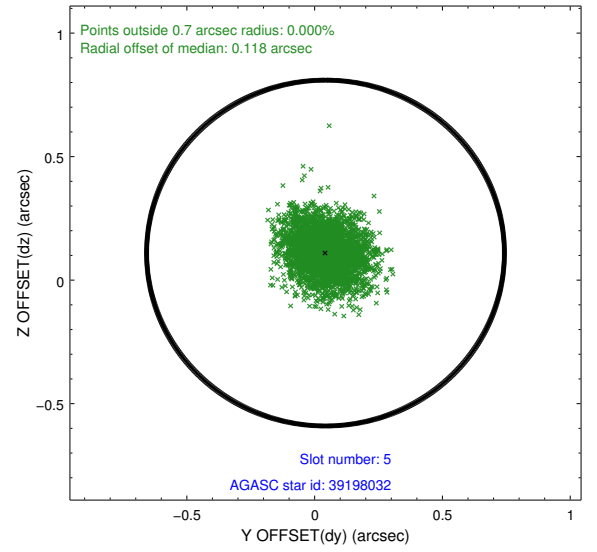
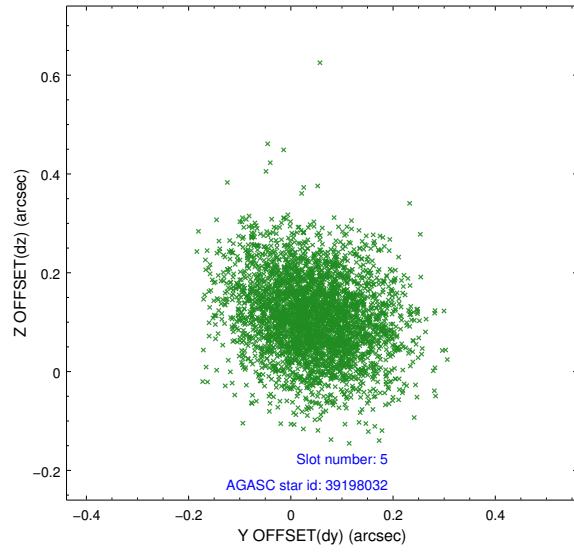
### 2.4.1 Slot 3



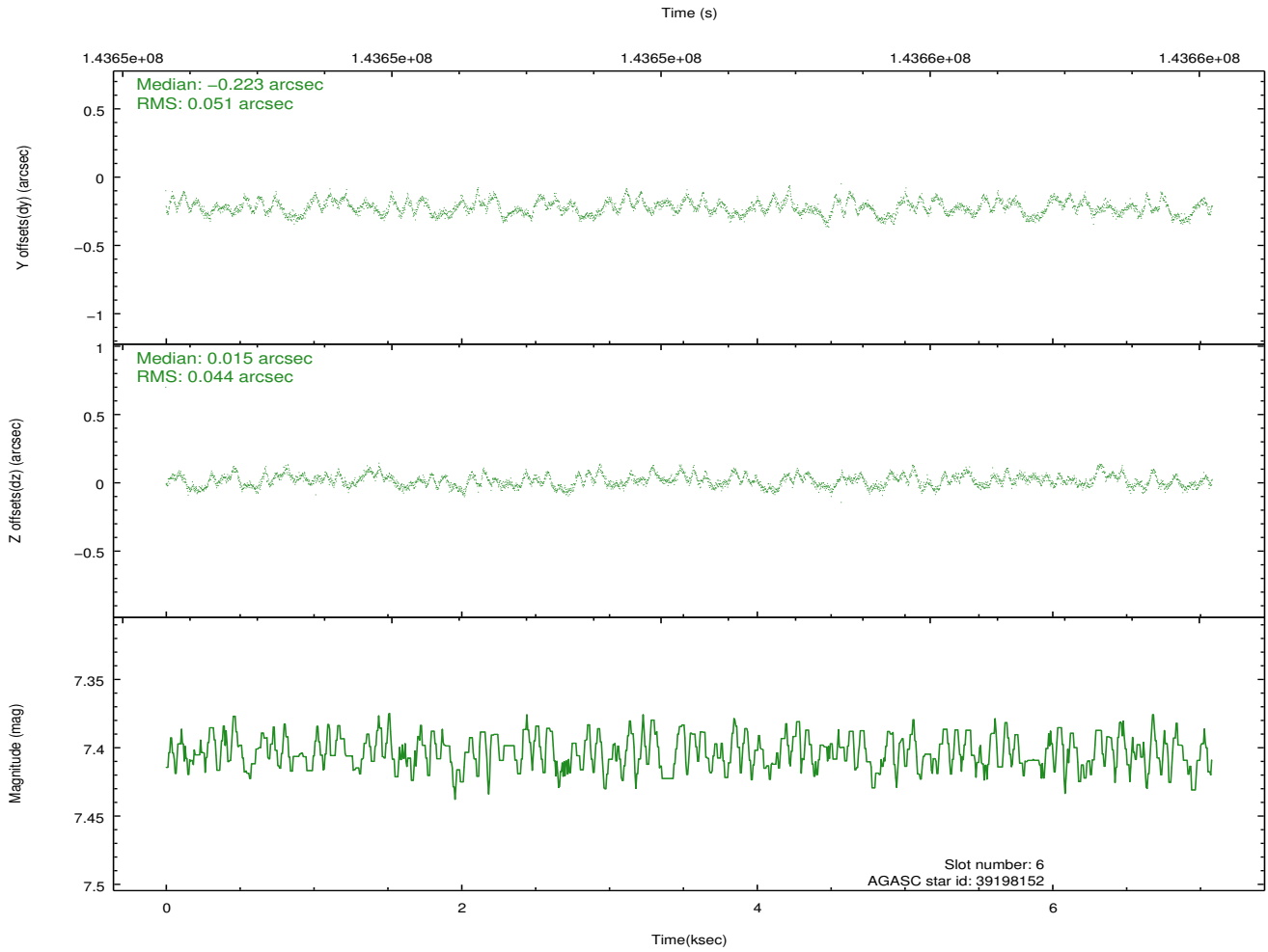
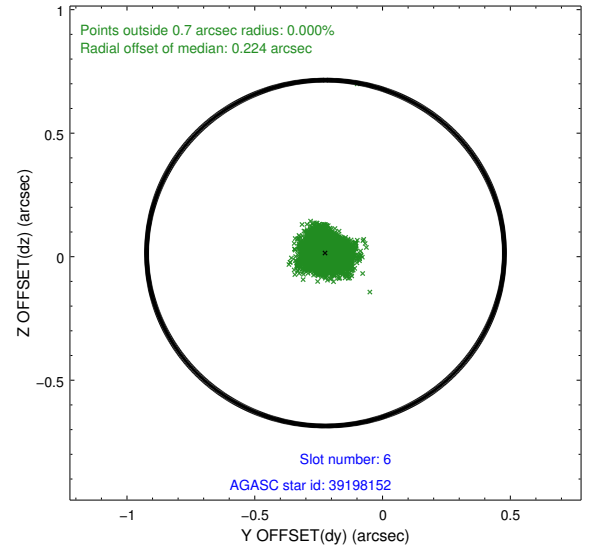
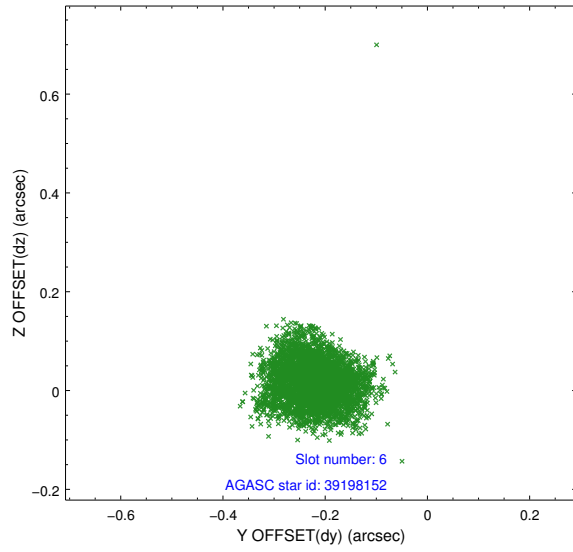
## 2.4.2 Slot 4



### 2.4.3 Slot 5

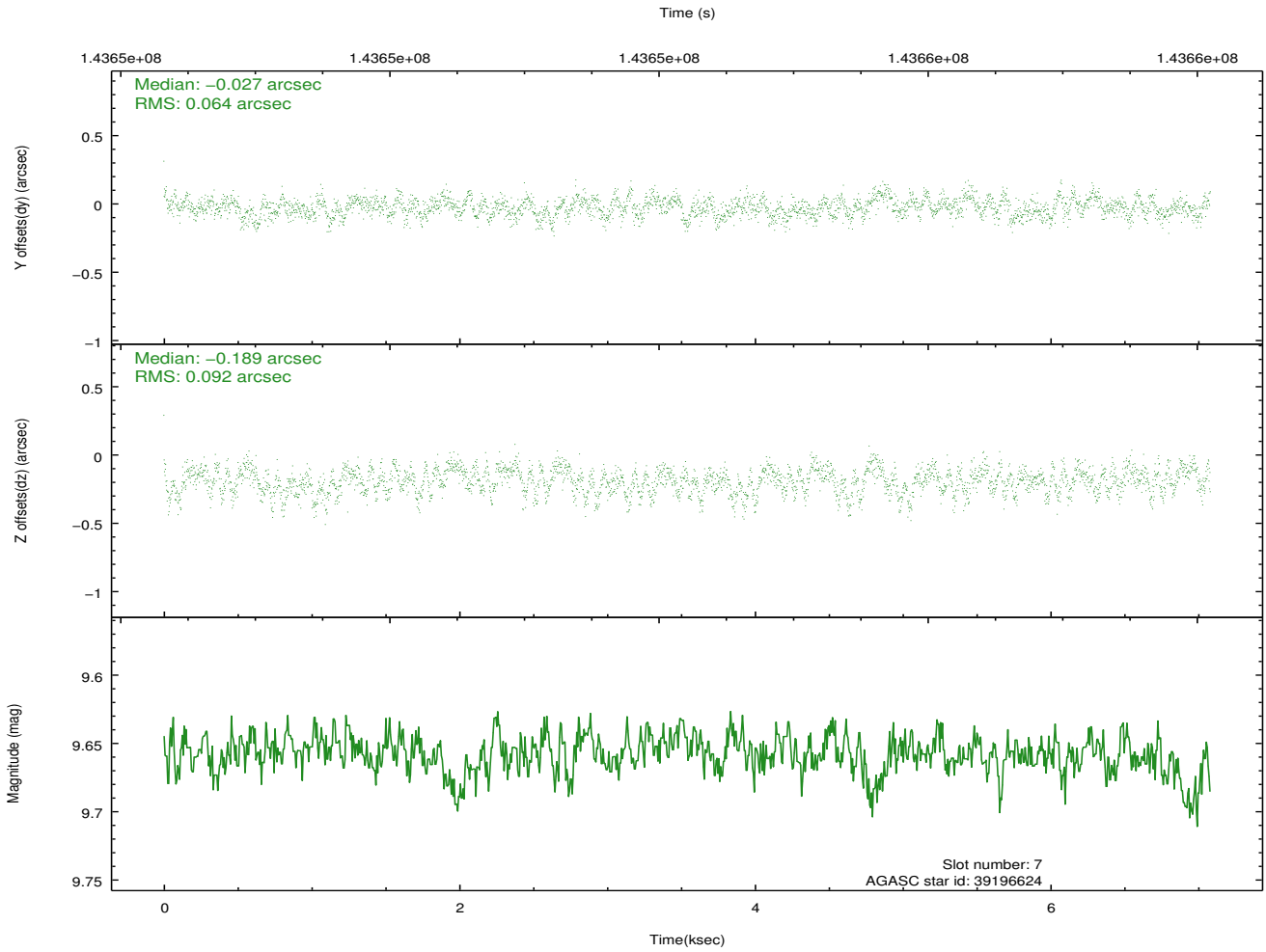
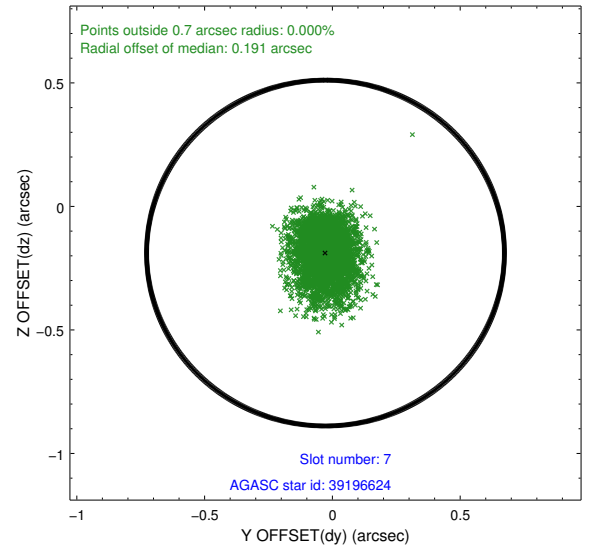
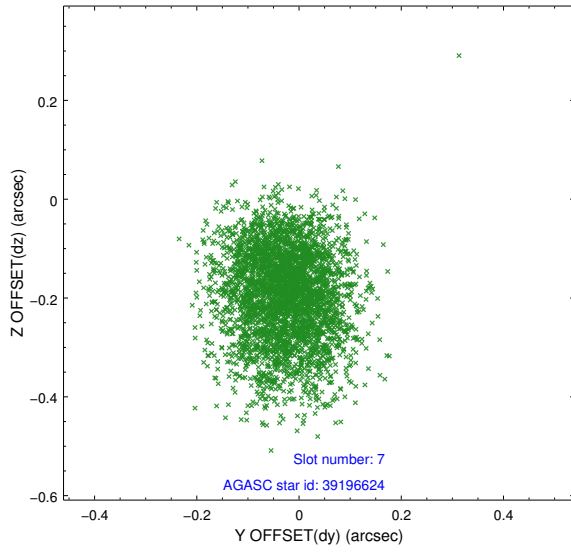


## 2.4.4 Slot 6



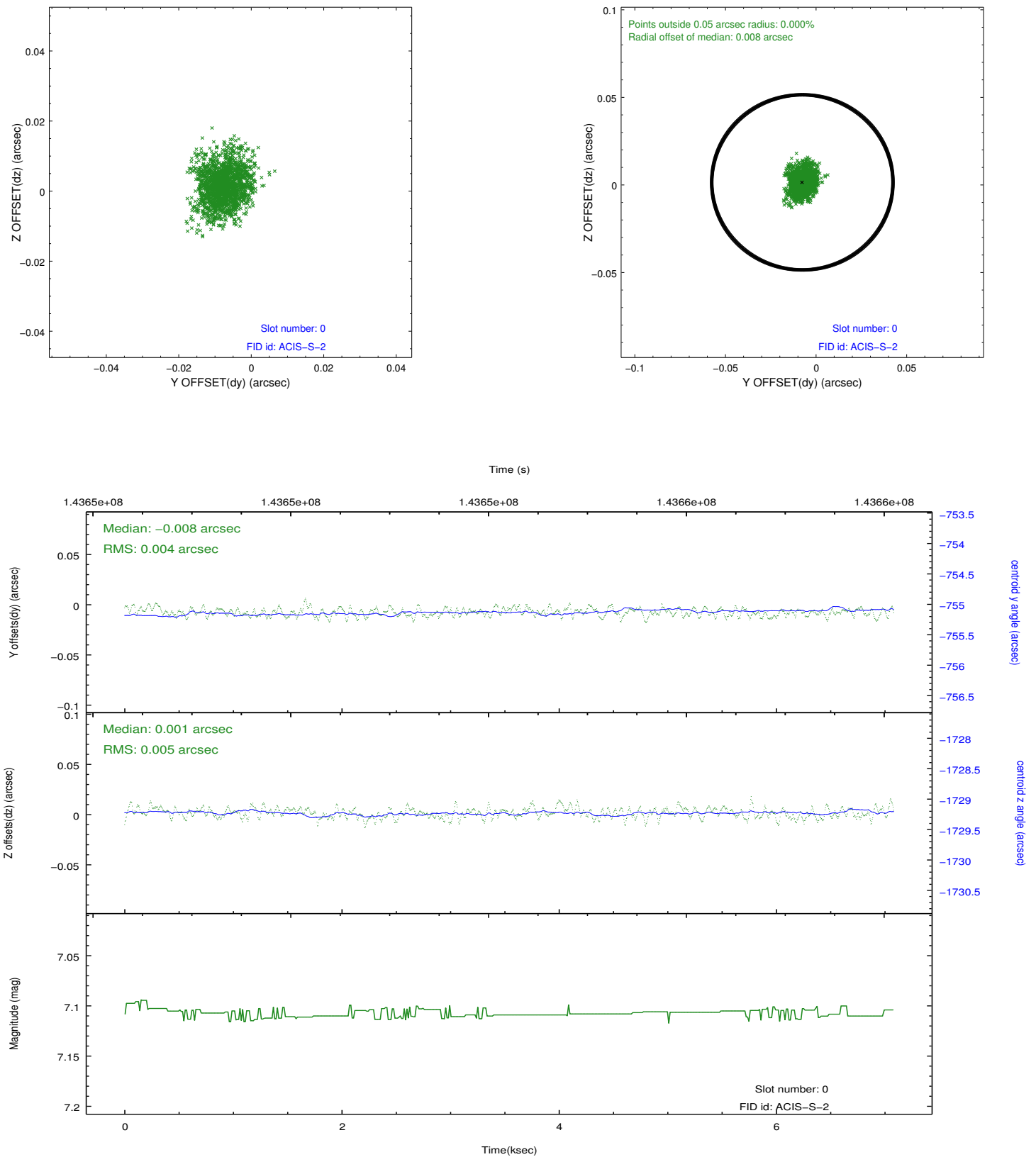


## 2.4.5 Slot 7

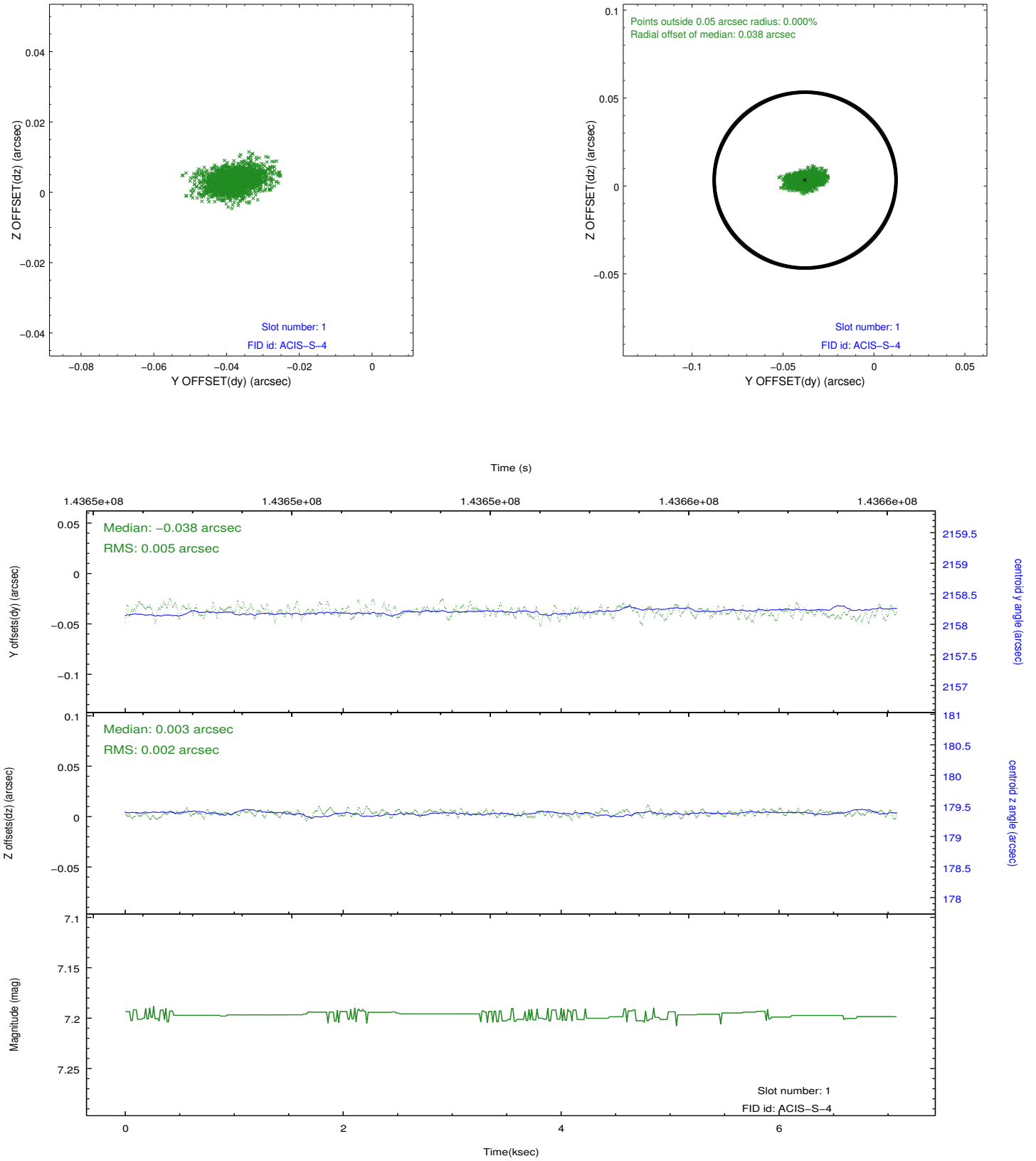


## 2.5 FID Slots

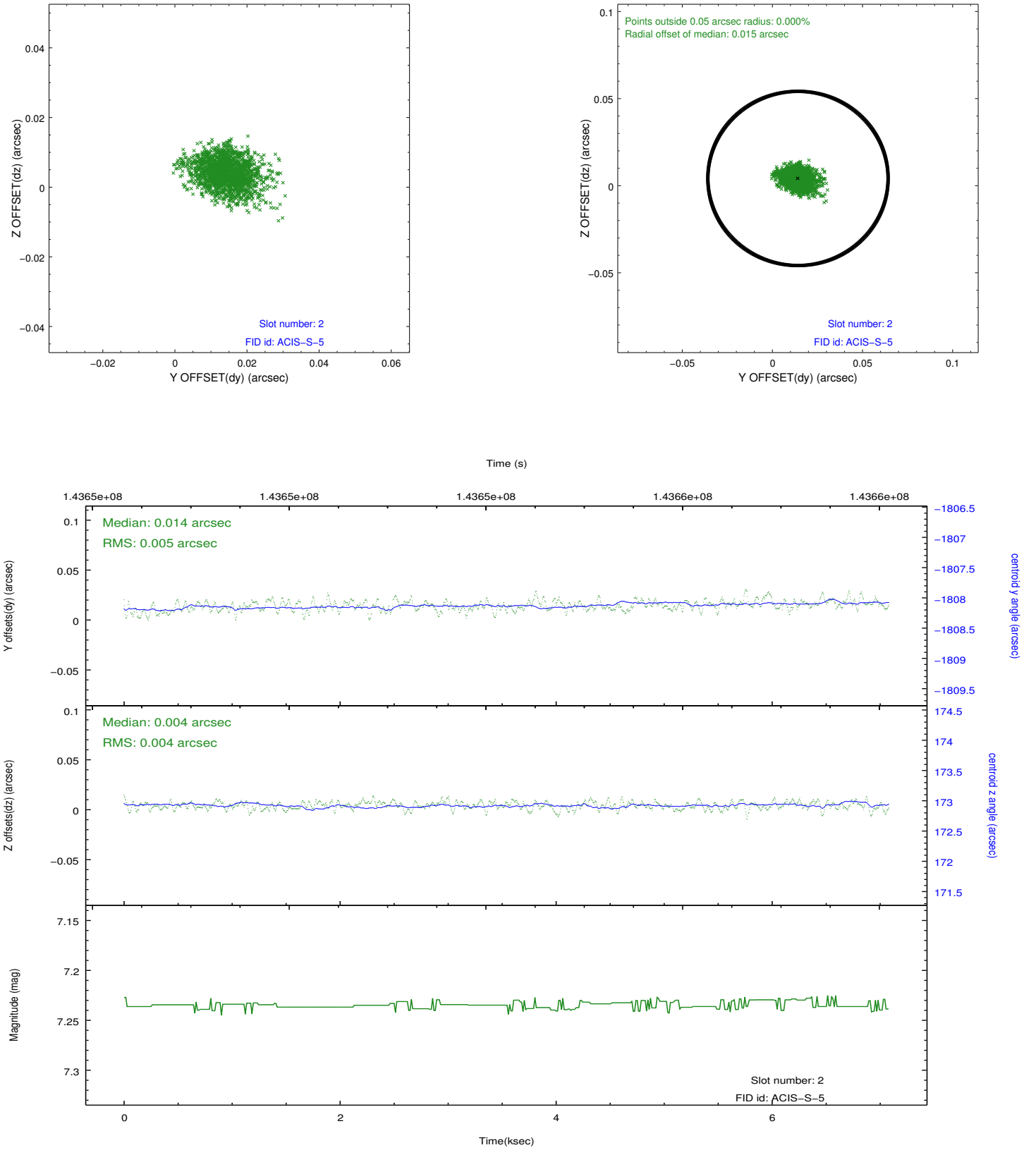
### 2.5.1 Slot 0



## 2.5.2 Slot 1



### 2.5.3 Slot 2



## A Summary

### A.1 Status

V&V Scientist	Beth Sundheim
V&V Date (YYYY-MM-DD)	2012.10.21
V&V Edition	1
V&V Disposition and Status	OK
V&V Charge Time	6.659

### A.2 Comments