

V&V Reference Report

L2 ASCDS Version : 7.6.9

Observation 2585 - L2 Version 001
Chandra X-Ray Center

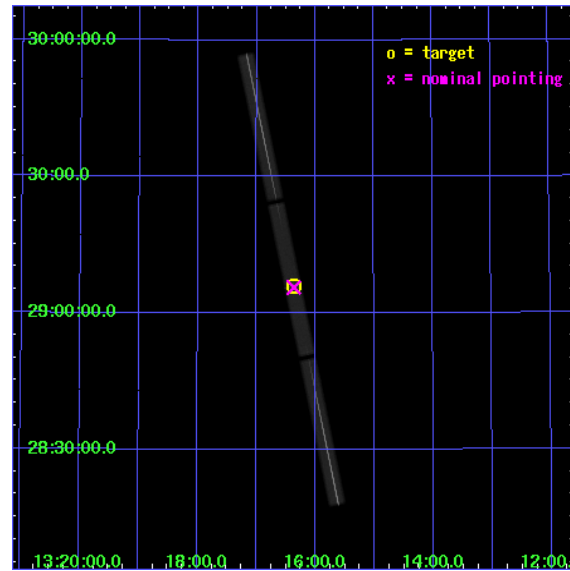
L2 Processing Date : Sep 26 2006

Contents

1	Front	2
2	OBI	3
2.1	OBI	3
2.1.1	Images	3
2.1.2	Parameters	4
2.1.3	Events	4
2.2	Compared Parameters	5
2.3	Aspect	6
2.4	Star Slots	9
2.4.1	Slot 3	9
2.4.2	Slot 4	10
2.4.3	Slot 5	11
2.4.4	Slot 6	12
2.4.5	Slot 7	13
2.5	FID Slots	14
2.5.1	Slot 0	14
2.5.2	Slot 1	15
2.5.3	Slot 2	16
3	Gratings	17
3.1	LETG Arm	17
A	Summary	19
A.1	Status	19
A.2	Comments	19

1 Front

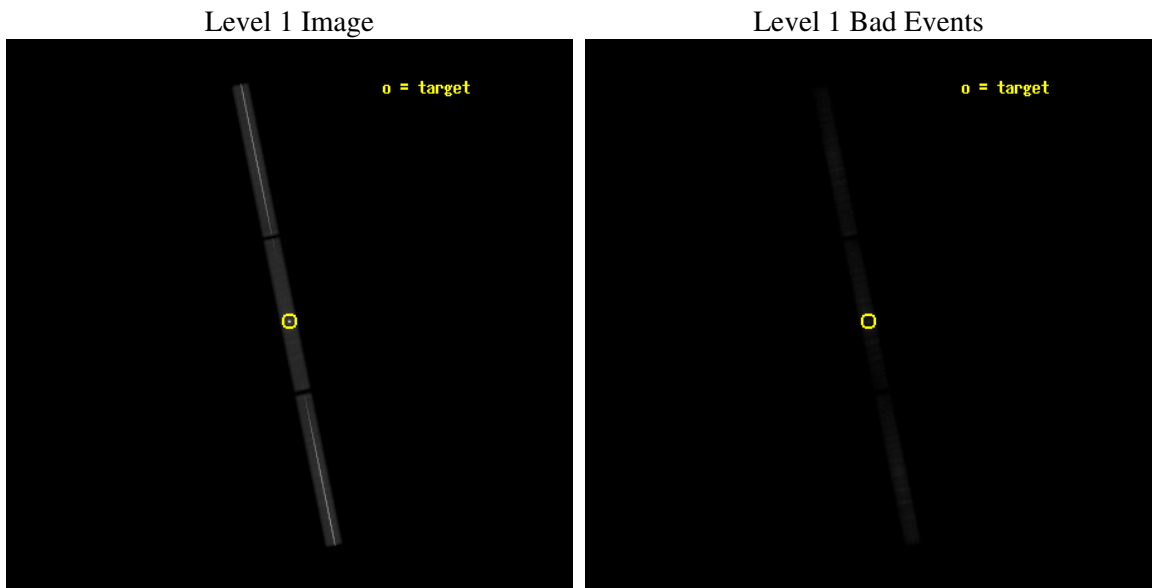
seq_num	290141
obs_id	2585
title	AO3 CALIBRATION OBSERVATIONS OF HZ43
observer	Dr. CXC Calibration
object	HZ43
ra_targ	199.092083
dec_targ	29.099
ra_nom	199.09081144751
dec_nom	29.094480721695
roll_nom	258.23305731771
revision	2
ontime	20179.17582956
livetime	19989.868488836
l2events	1782215



2 OBI

2.1 OBI

2.1.1 Images



2.1.2 Parameters

obi_num	0
ascdsver	7.6.9
caldbver	3.2.3
date	2006-09-26T10:29:42
revision	2

sched_exp_time	20000.000000
ontime	20179.17582956
l1events	2371279

2.1.3 Events

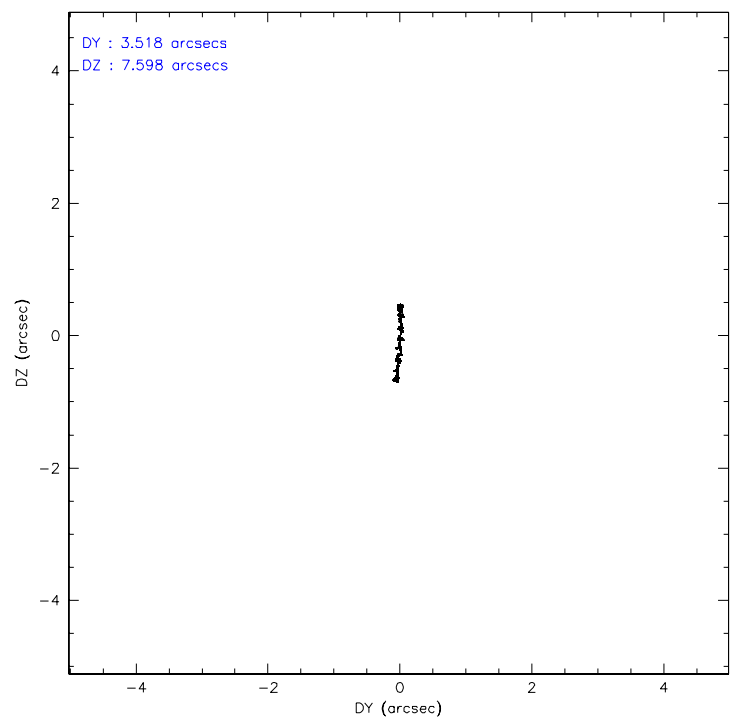
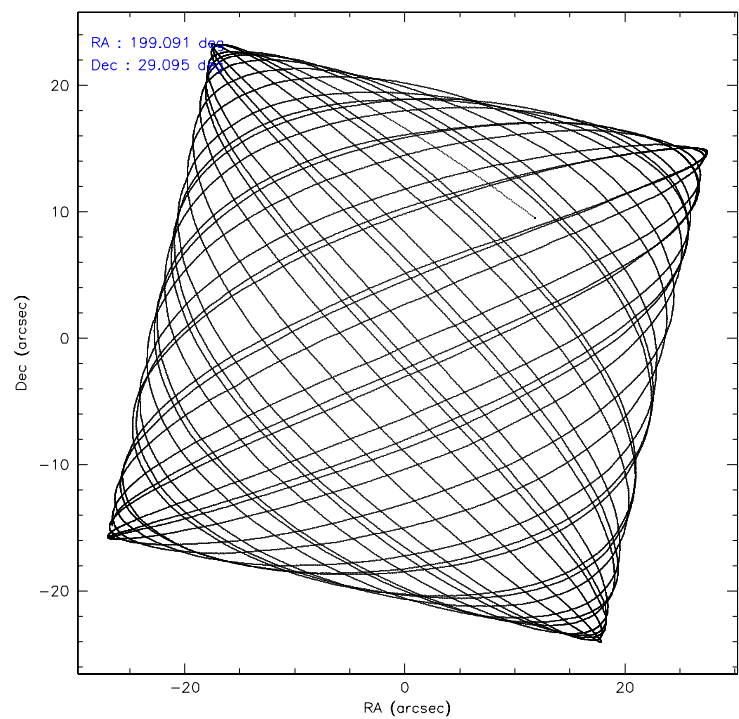
Level 1 Events

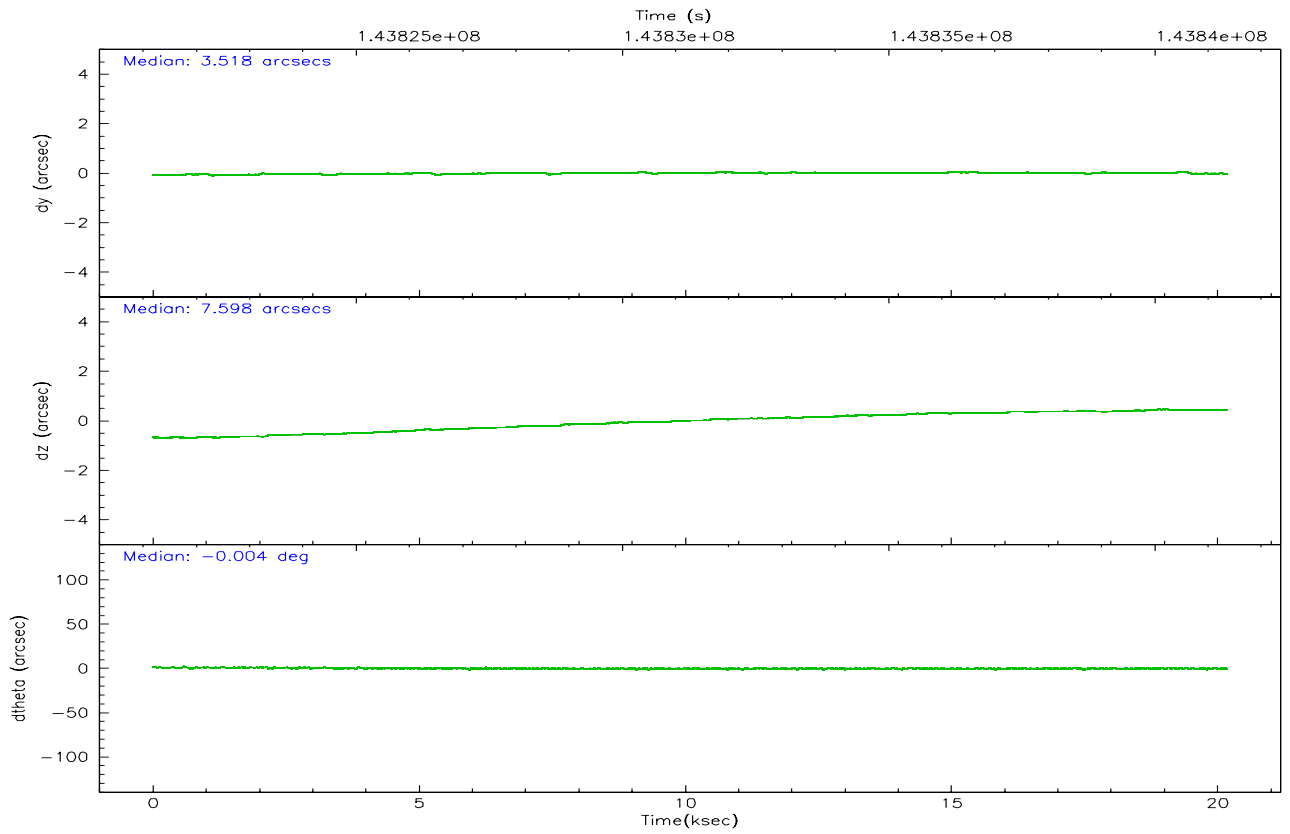
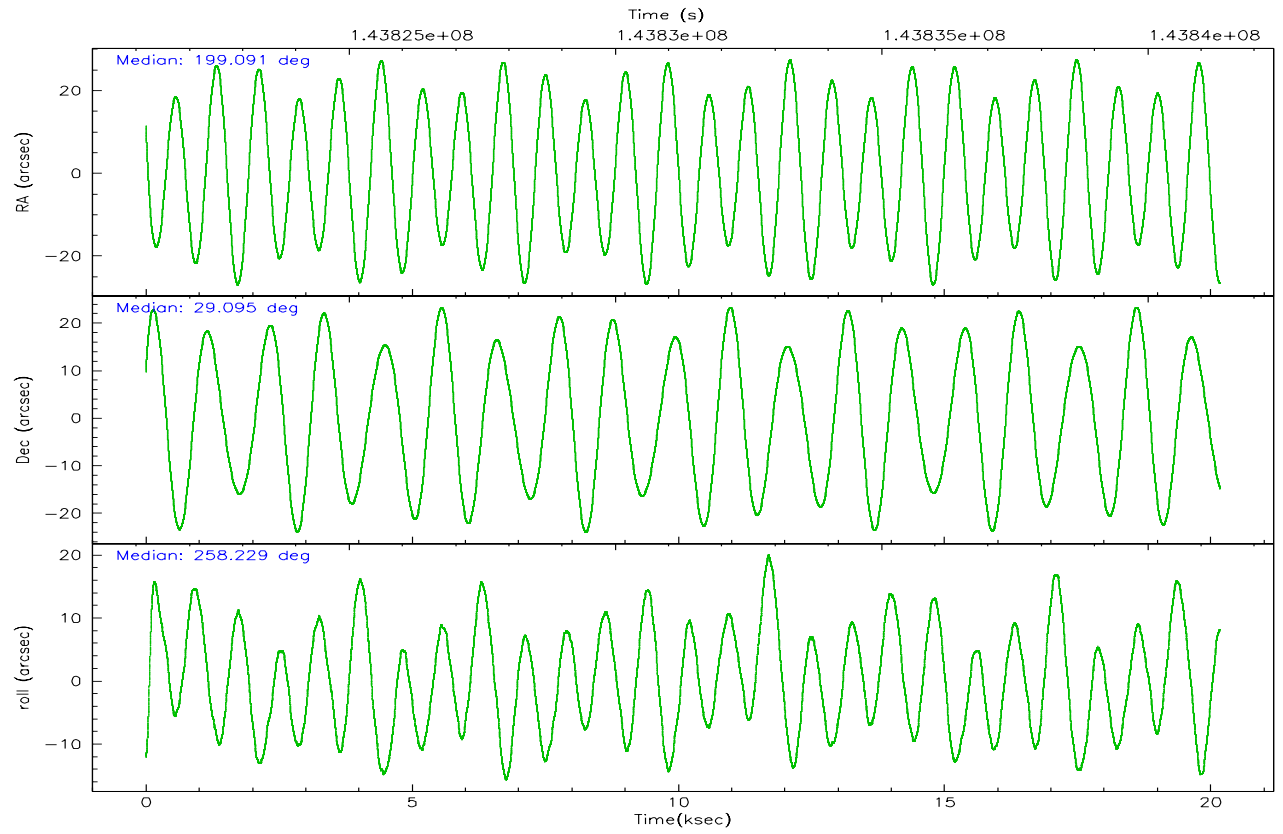
	segment 1	segment 2	segment 3
level 1 events	821705	711077	838497
rejected events	126346	133148	149544
rejected %	15%	18%	17%

2.2 Compared Parameters

Parameter	Planned	Actual	Parameter	Planned	Actual
Instrument	HRC	HRC	Obspar format version number	6	6
Detector	HRC-S	HRC-S	Obspar file type	PREDICTED	ACTUAL
Grating	LETG	LETG	Obspar update status	NONE	UPDATED
Data mode	OBSERVING	OBSERVING			
Observation mode	POINTING	POINTING			
Pointing RA	199.079066	199.0908114475099			
Pointing Dec	29.121132	29.09448072169548			
Pointing Roll	258.171442	258.2330573177134			
Window start time	139276864.184000	139276864.184000			
Window stop time	144460864.184000	144460864.184000			
SIM focus pos (mm)	-1.429586	-1.428180813131781			
SIM defocus (mm)	0.1037507710433287	0.1051558262725154			
SIM translation stage pos (mm)	250.455976	250.466033080201			
SIM translation stage offset (mm)	0	-0.01005468664627074			
Observation start time	143821364.184000	143820098.37659			
Observation start date	2002-07-23T14:21:40	2002-07-23T14:01:38			
Observation end time	143841364.184000	143841534.20247			
Observation end date	2002-07-23T19:55:00	2002-07-23T19:58:54			

2.3 Aspect



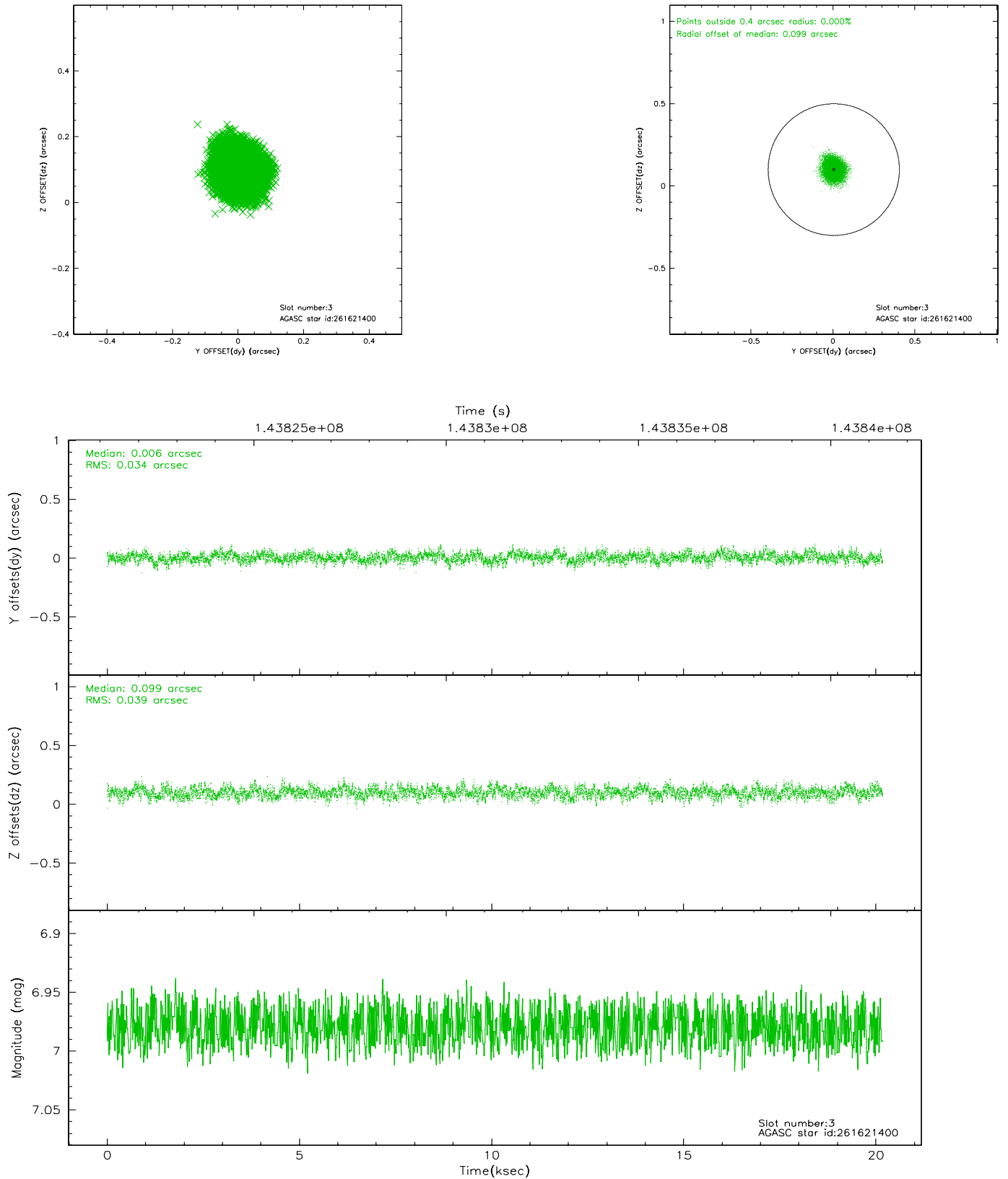


Slot Statistics

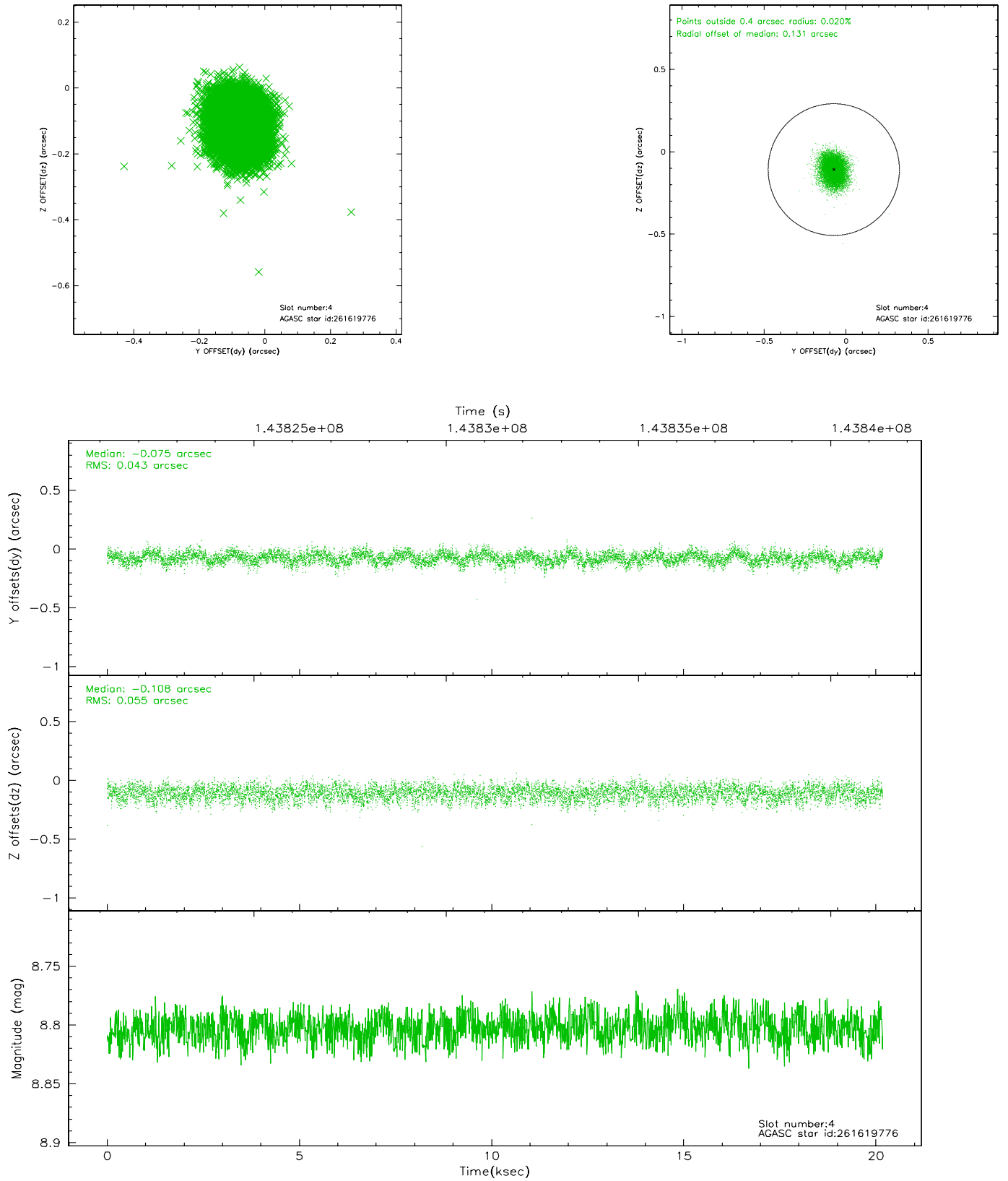
slot	status	id	mag	n_pts	med_dy	med_dz	dr1	dr2	ra	dec	mean_y	mean_z
0	FID	HRC-S-1	6.98	4922	0.151	-0.094	0.007	0.013	0.000000	0.000000	-1157.54	-456.10
1	FID	HRC-S-2	6.98	4922	0.077	-0.087	0.006	0.012	0.000000	0.000000	1241.83	-448.80
2	FID	HRC-S-3	7.00	4922	0.162	-0.121	0.008	0.017	0.000000	0.000000	-1160.01	573.31
3	GUIDE	261621400	6.98	9844	0.006	0.099	0.055	0.088	198.901600	28.741982	1450.78	-267.76
4	GUIDE	261619776	8.80	9840	-0.075	-0.108	0.075	0.119	198.654383	29.401174	-715.46	-1510.15
5	GUIDE	261619992	9.33	9841	0.102	-0.031	0.100	0.163	198.395553	28.647634	2105.52	-1764.84
6	GUIDE	261623040	9.12	9844	-0.139	-0.026	0.082	0.139	198.792686	29.757643	-2059.87	-1345.64
7	GUIDE	261623624	9.13	9818	0.108	0.070	0.082	0.131	199.611555	28.454113	2001.28	2141.92

2.4 Star Slots

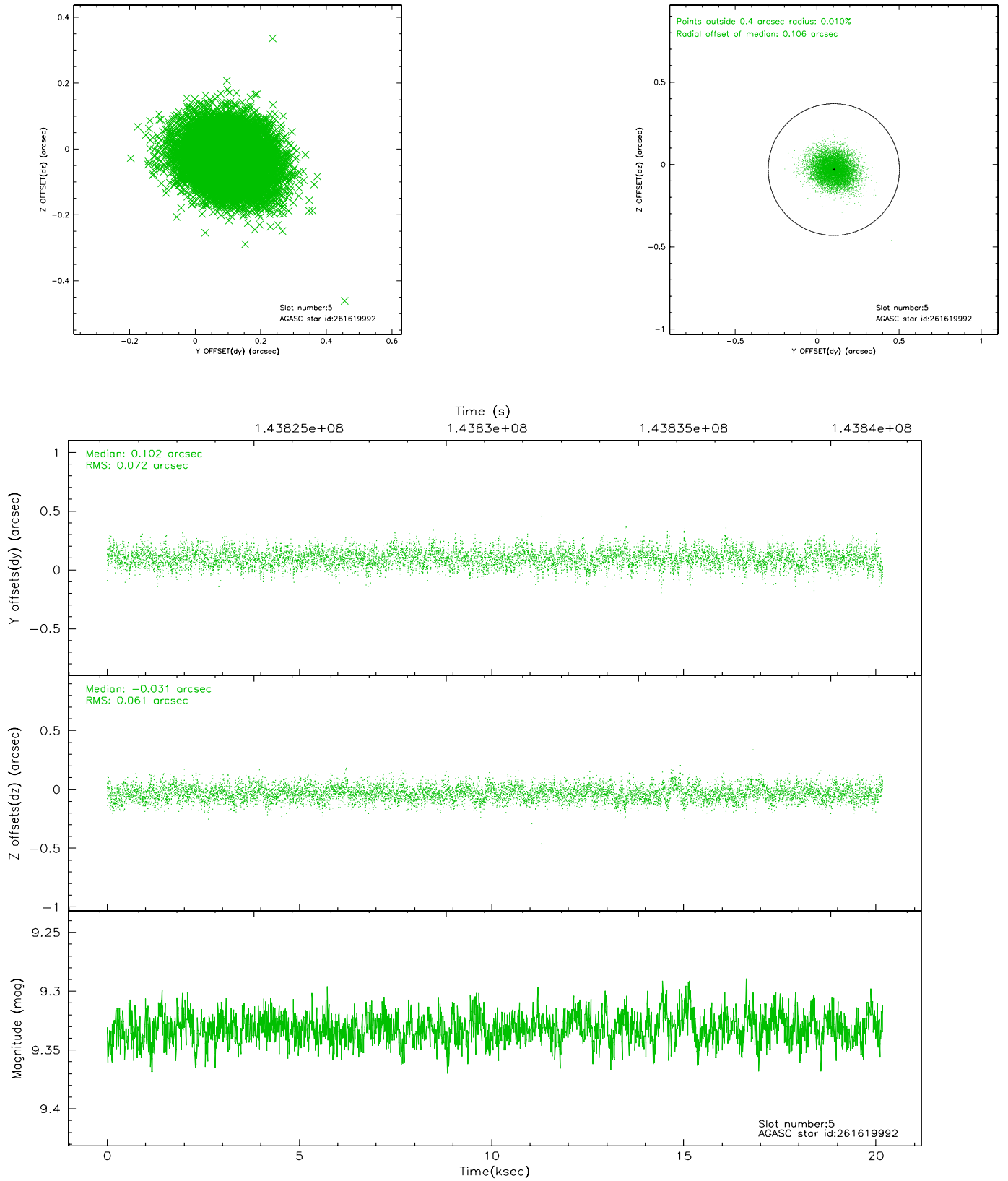
2.4.1 Slot 3



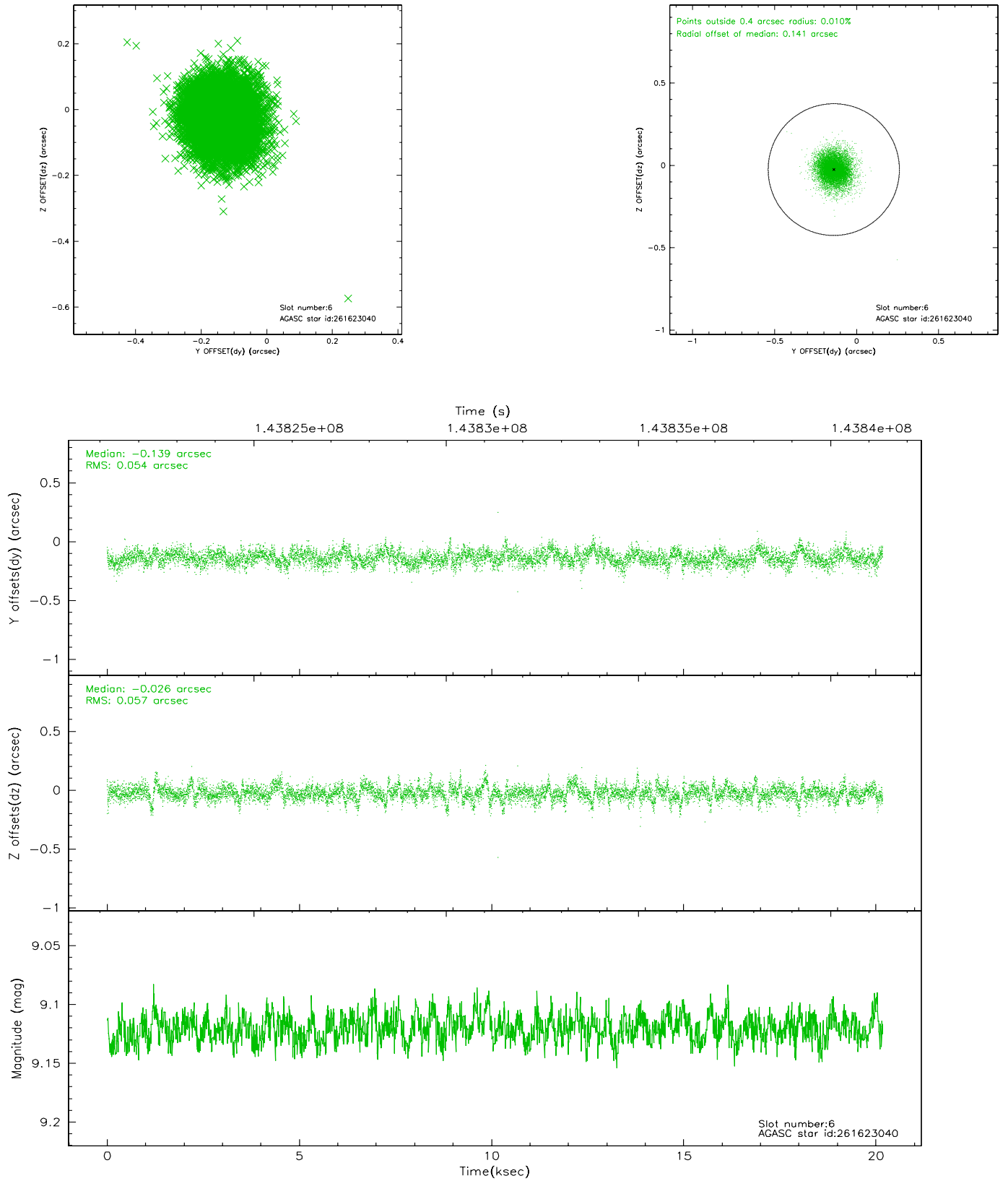
2.4.2 Slot 4



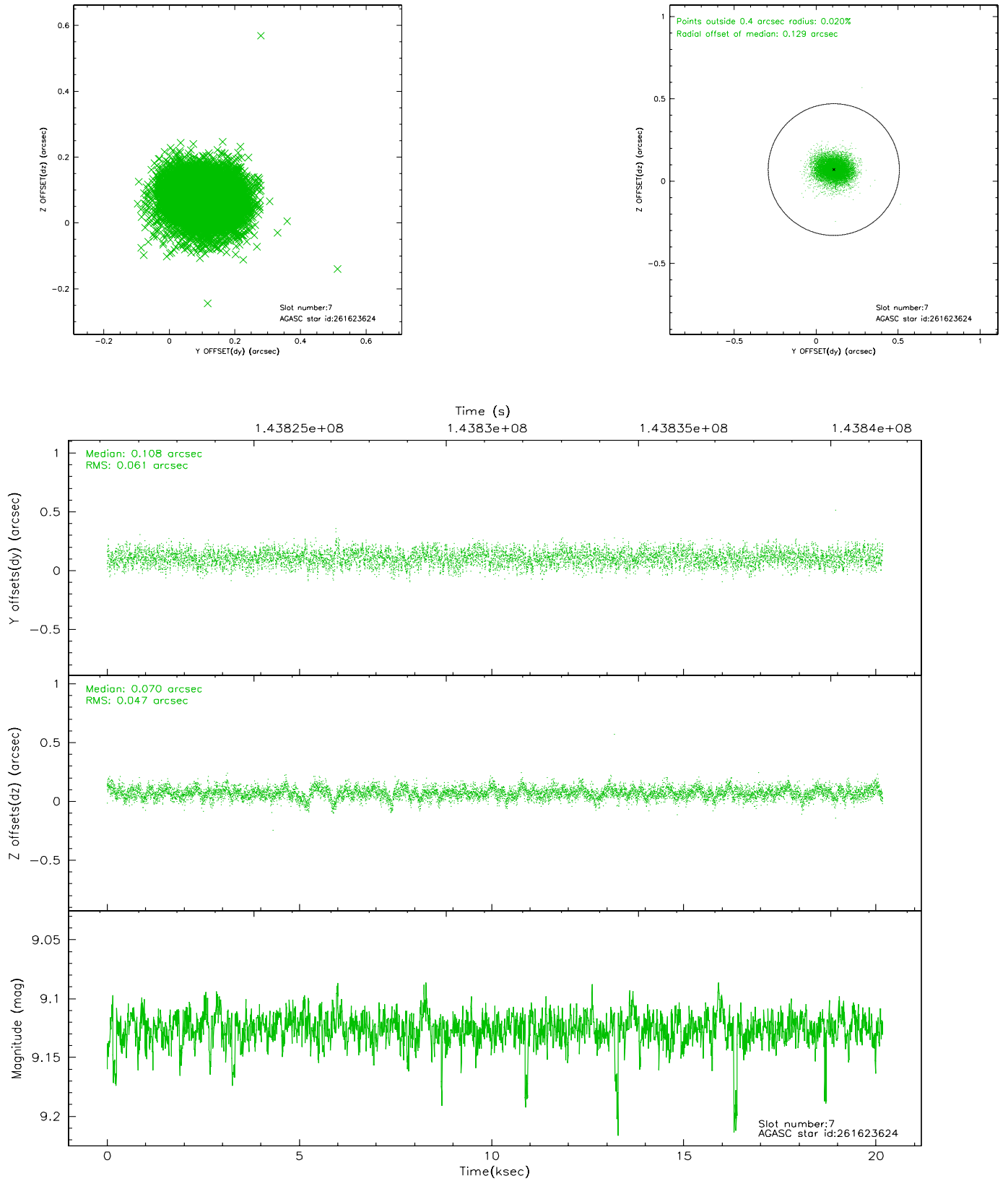
2.4.3 Slot 5



2.4.4 Slot 6

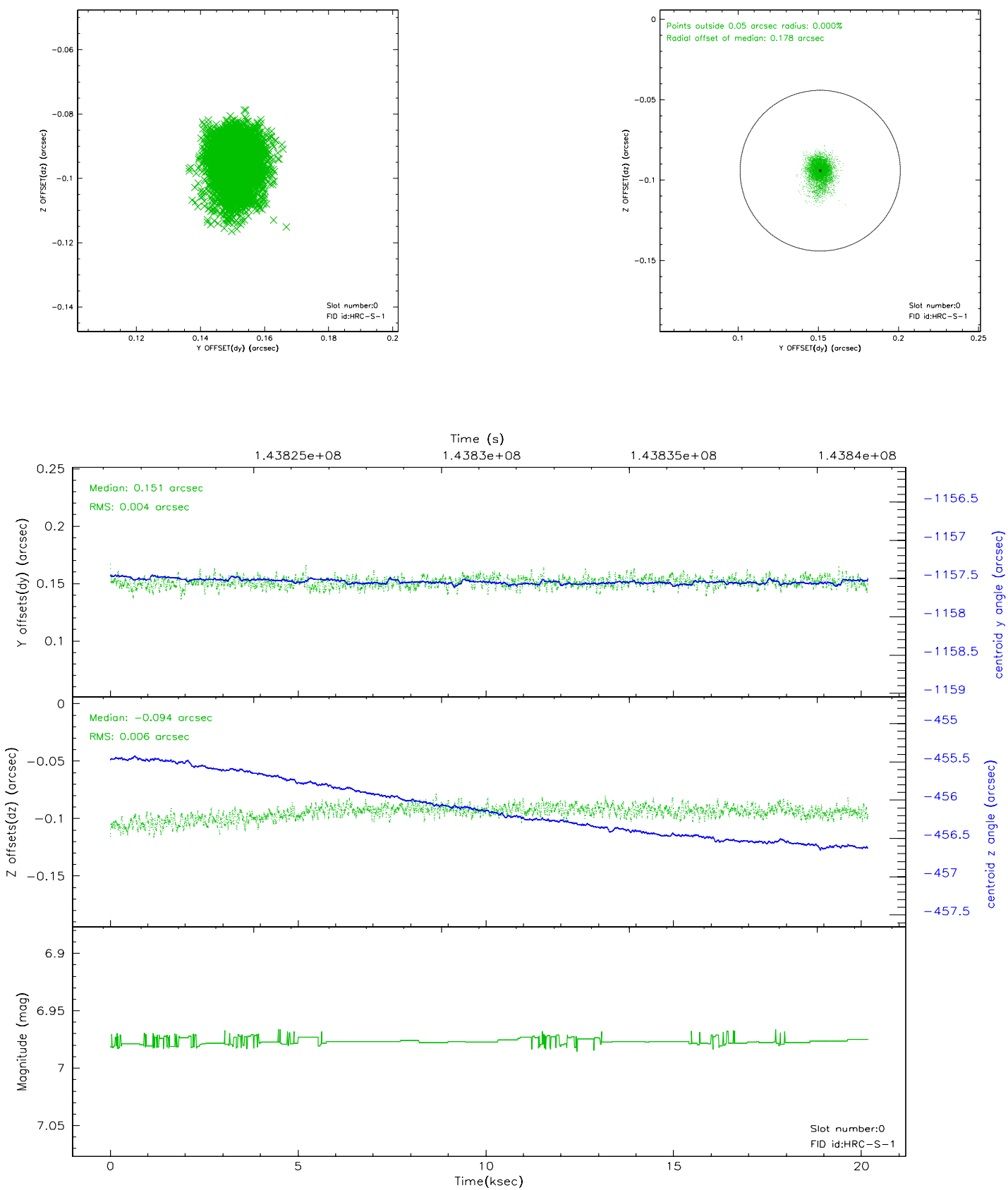


2.4.5 Slot 7

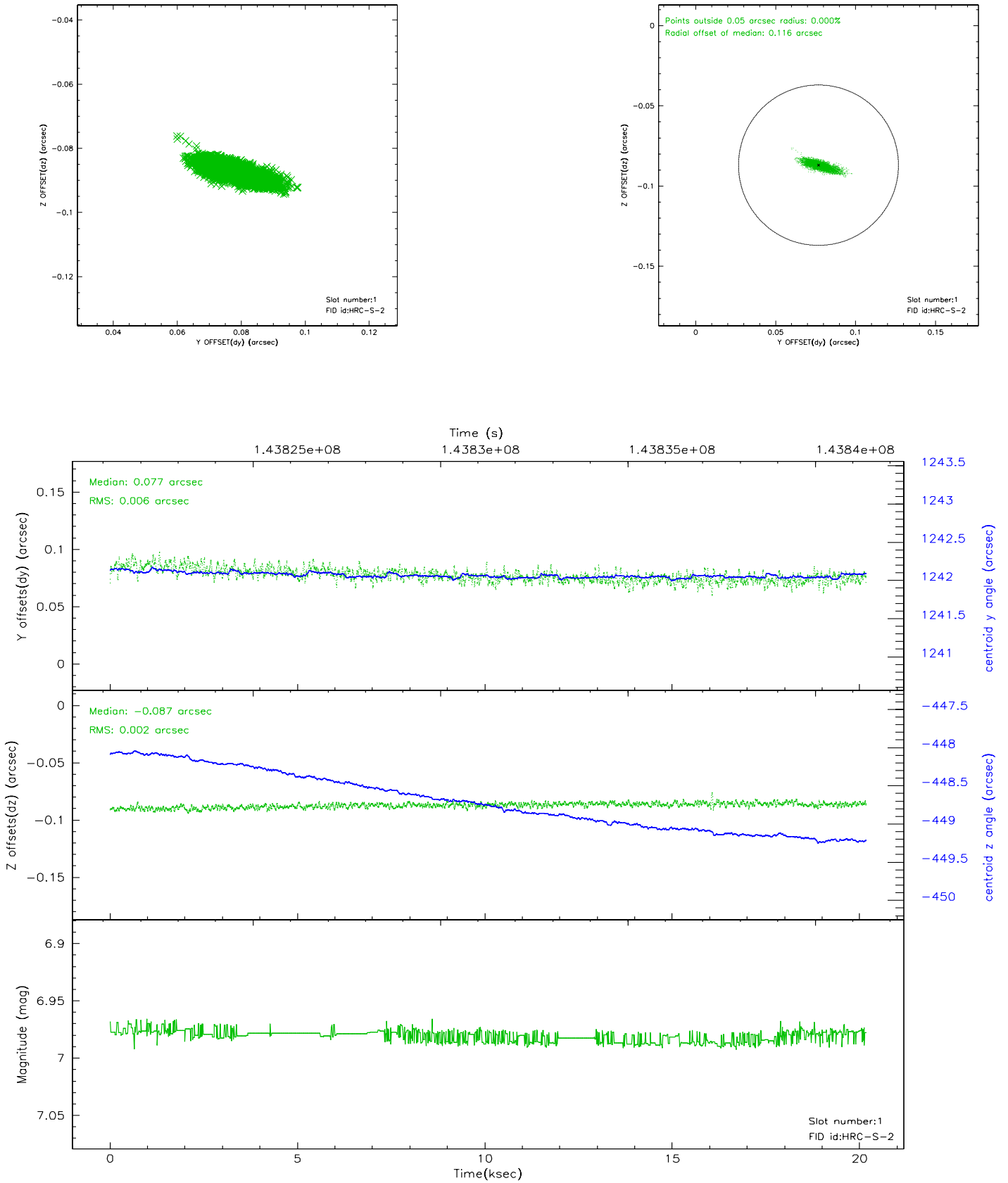


2.5 FID Slots

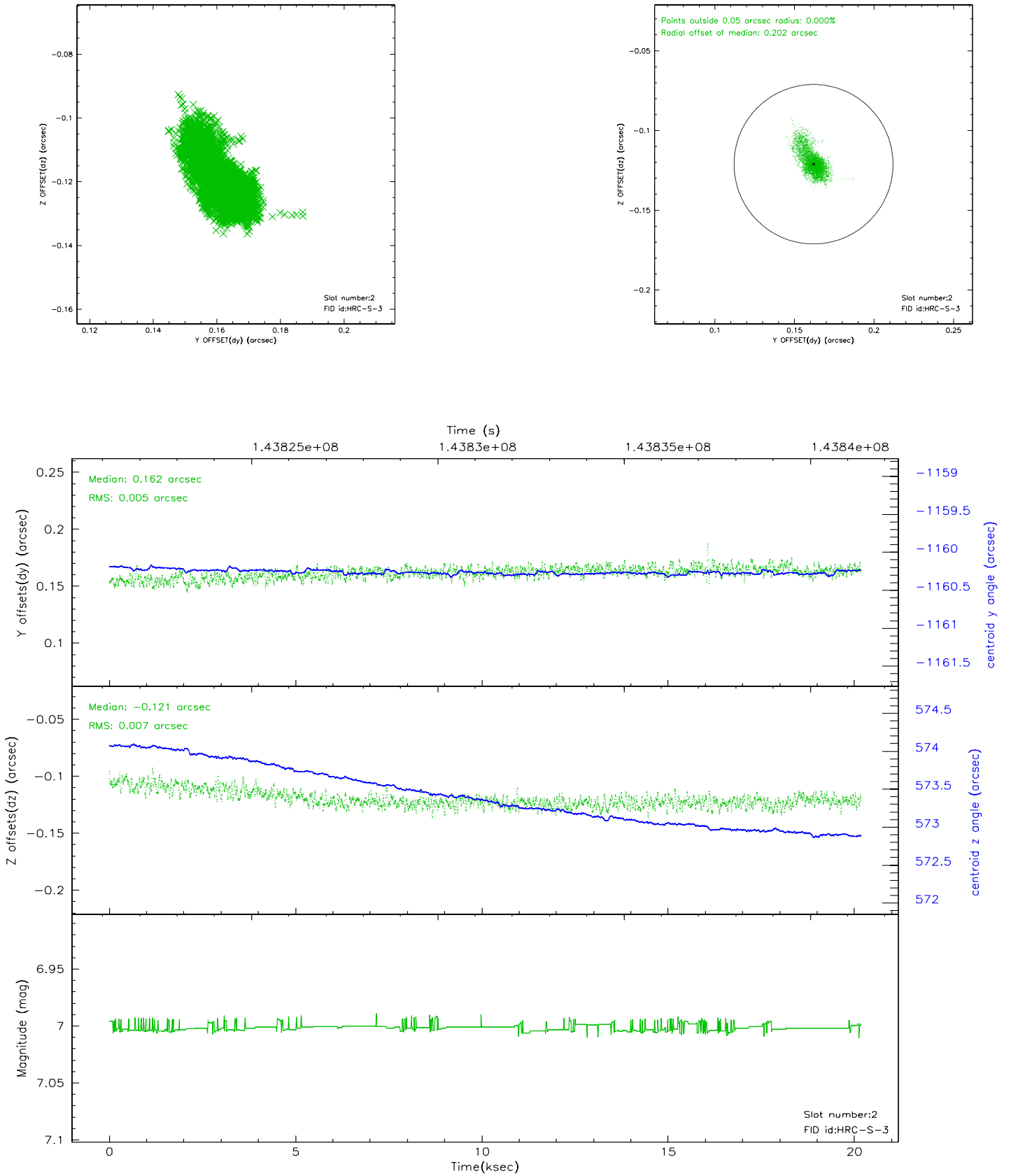
2.5.1 Slot 0



2.5.2 Slot 1

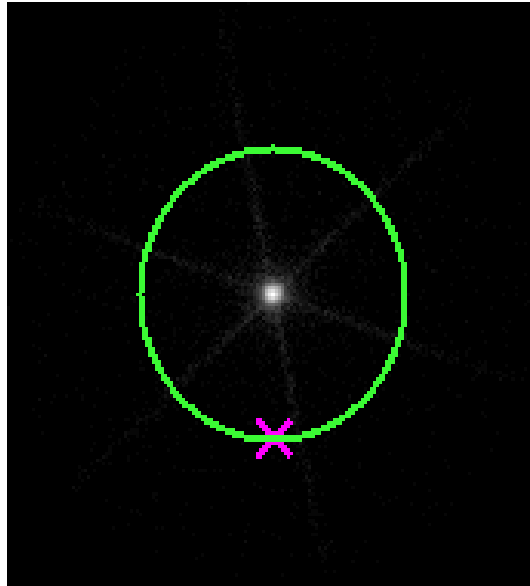


2.5.3 Slot 2



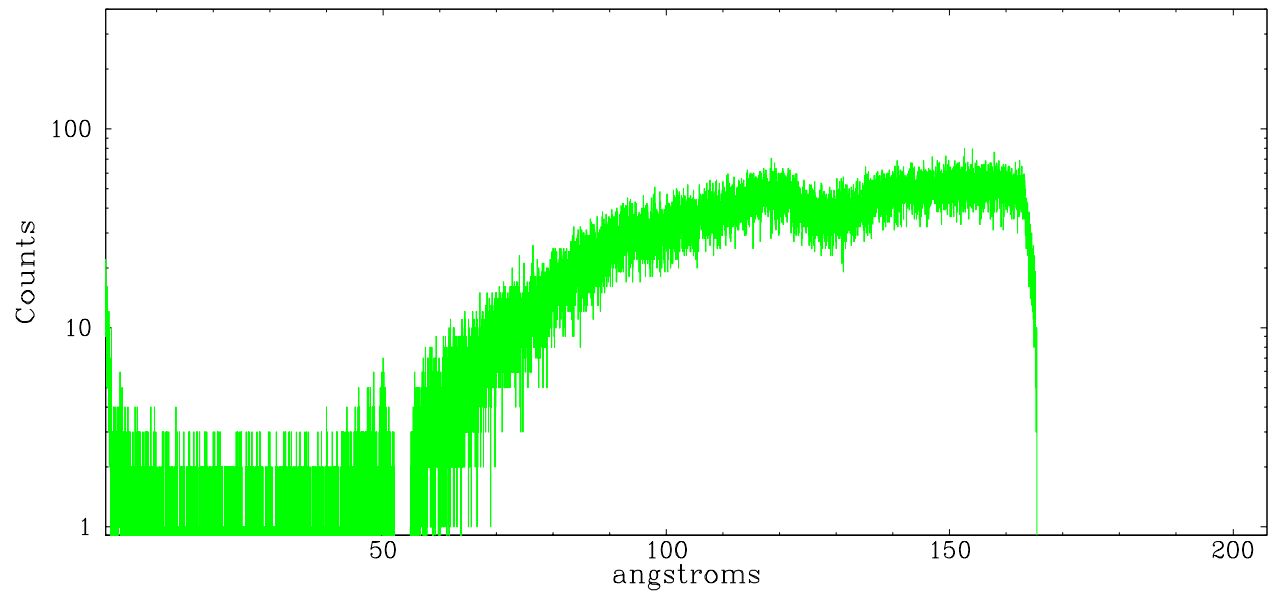
3 Gratings

3.1 LETG Arm

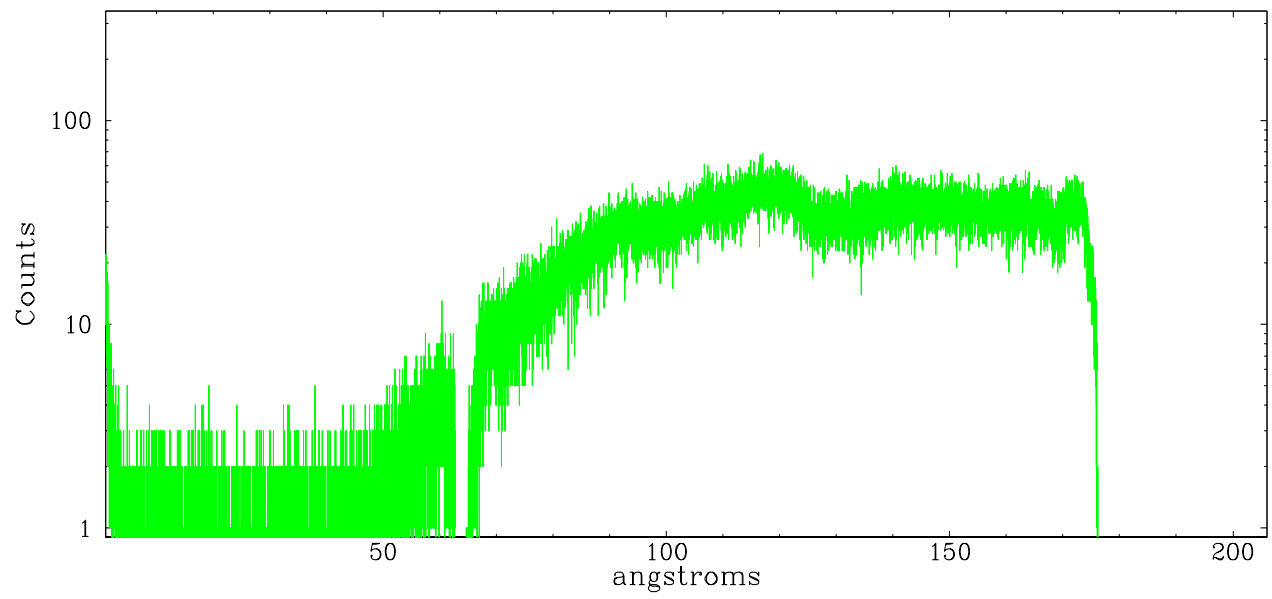


LETG Zero Order

leg order -1



leg order $+1$



A Summary

A.1 Status

V&V Scientist	Beth Sundheim
V&V Date (YYYY-MM-DD)	2006.09.26
V&V Edition	1
V&V Disposition and Status	OK
V&V Charge Time	20.179

A.2 Comments