

# V&V Reference Report

## L2 ASCDS Version : 7.6.9

Observation 2295 - L2 Version 001  
Chandra X-Ray Center

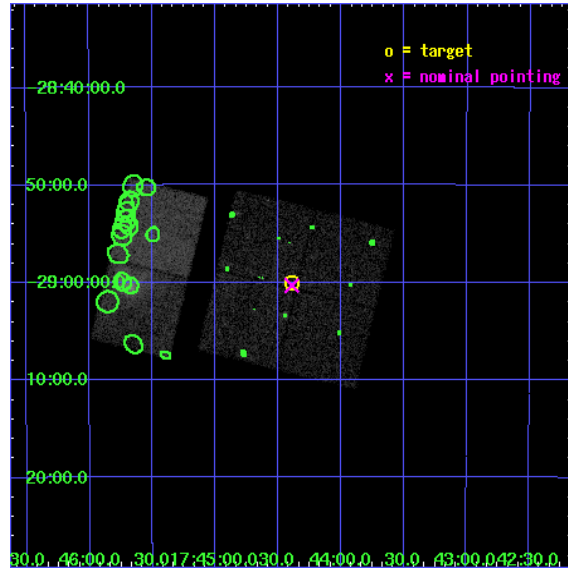
L2 Processing Date : Dec 14 2006

## Contents

<b>1</b>	<b>Front</b>	<b>2</b>
<b>2</b>	<b>OBI</b>	<b>3</b>
2.1	OBI . . . . .	3
2.1.1	Images . . . . .	3
2.1.2	Bias . . . . .	3
2.1.3	Parameters . . . . .	4
2.1.4	Events . . . . .	4
2.2	Compared Parameters . . . . .	5
2.3	Aspect . . . . .	6
2.4	Star Slots . . . . .	9
2.4.1	Slot 3 . . . . .	9
2.4.2	Slot 4 . . . . .	10
2.4.3	Slot 5 . . . . .	11
2.4.4	Slot 6 . . . . .	12
2.4.5	Slot 7 . . . . .	13
2.5	FID Slots . . . . .	14
2.5.1	Slot 0 . . . . .	14
2.5.2	Slot 1 . . . . .	15
2.5.3	Slot 2 . . . . .	16
<b>3</b>	<b>Point Sources</b>	<b>17</b>
<b>A</b>	<b>Summary</b>	<b>18</b>
A.1	Status . . . . .	18
A.2	Comments . . . . .	18

# 1 Front

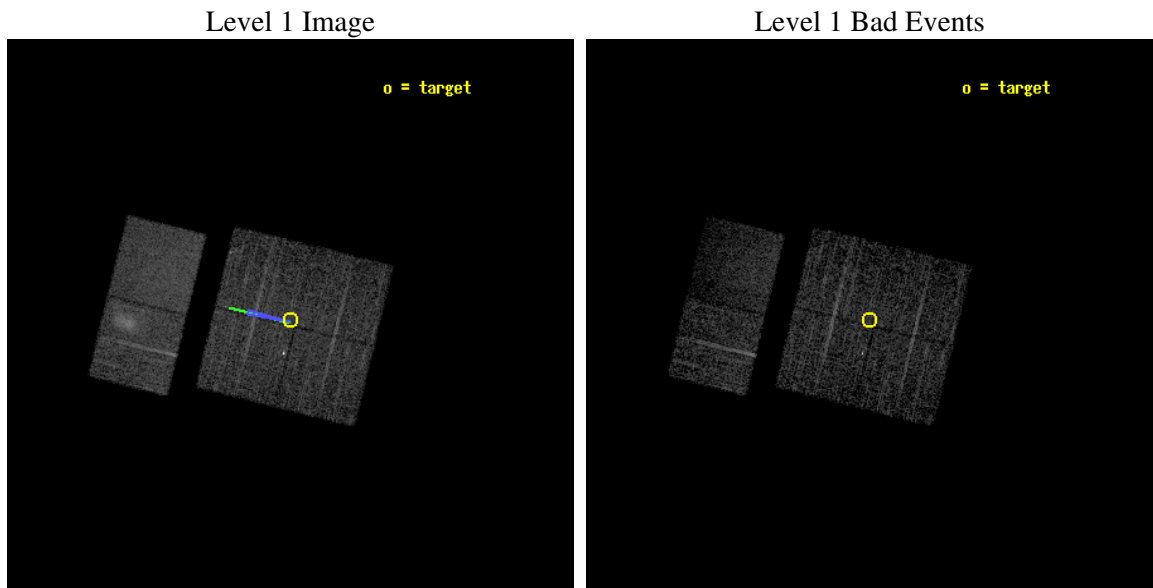
seq_num	900122
obs_id	2295
title	CHANDRA SURVEY OF THE GALACTIC RIDGE AROUND THE MILKY WAY CENTER
observer	Prof. Q. Daniel Wang
object	GCS 18
dtcycle	0
cycle	P
ra_targ	266.0985
dec_targ	-29.0007
ra_nom	266.09769303621
dec_nom	-29.00540566081
roll_nom	283.80730282688
revision	3
ontime	11257.600010484
livetime	11115.049500639
ontime0	11257.600010484
ontime1	11257.600010484
ontime2	11257.600010484
ontime3	11257.600010484
ontime6	11257.600010484
ontime7	11257.600010484
l2events	65060



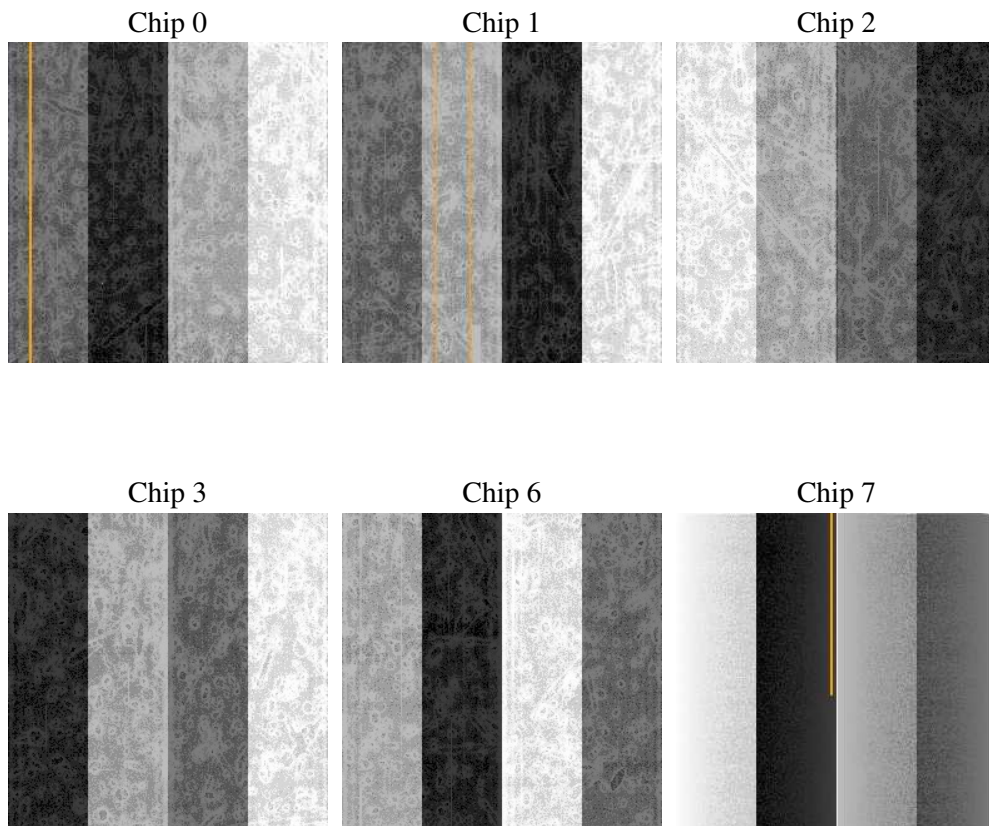
## 2 OBI

### 2.1 OBI

#### 2.1.1 Images



#### 2.1.2 Bias



### 2.1.3 Parameters

obi_num	0
ascdsver	7.6.9
caldbver	3.2.4
date	2006-12-14T13:57:38
revision	3

sched_exp_time	11500.000000
ontime	11262.498570651
ontime0	11262.498570651
ontime1	11262.498570651
ontime2	11262.498570651
ontime3	11262.498570651
ontime6	11262.498570651
ontime7	11262.498570651
l1events	207665

### 2.1.4 Events

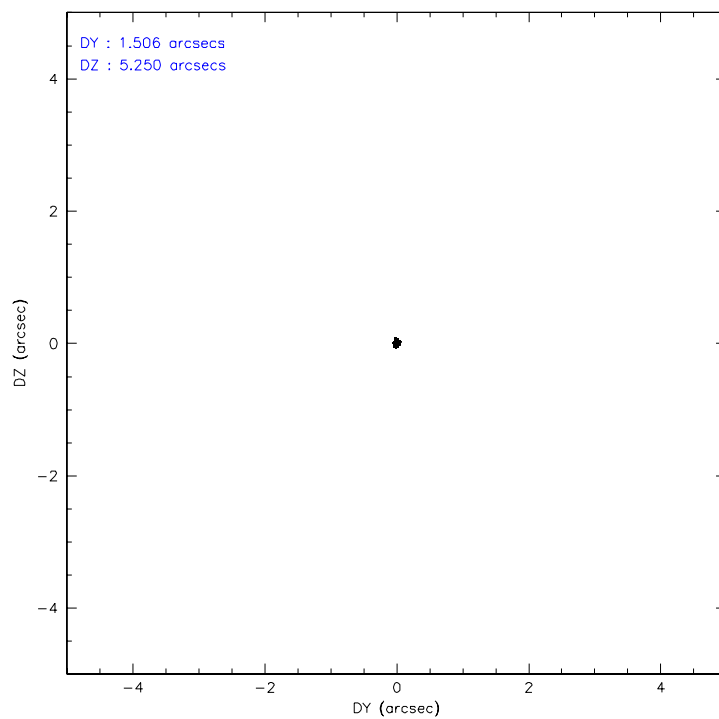
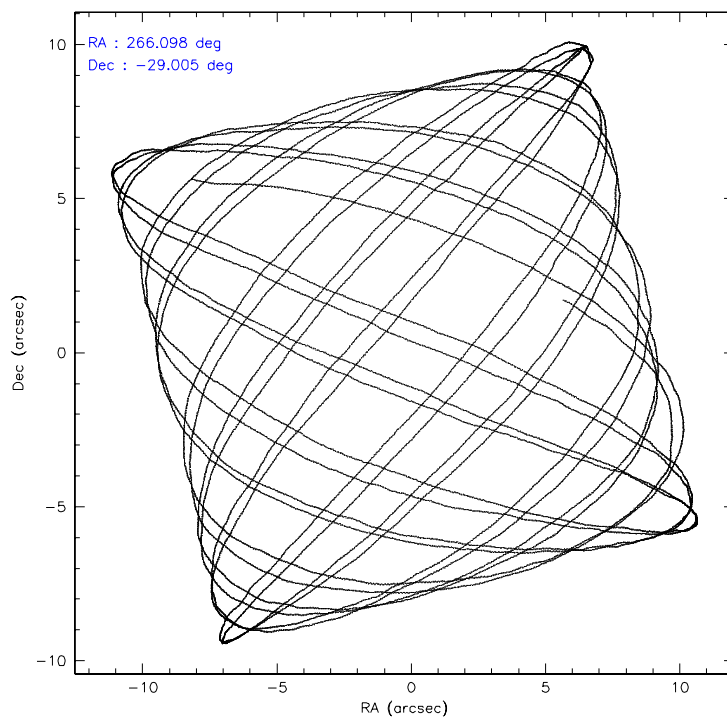
	ccd 0	ccd 1	ccd 2	ccd 3	ccd 6	ccd 7
level 1 events	28640	28209	35033	31242	43098	41443
rejected events	22338	21855	25567	24478	25701	18724
rejected %	77%	77%	72%	78%	59%	45%

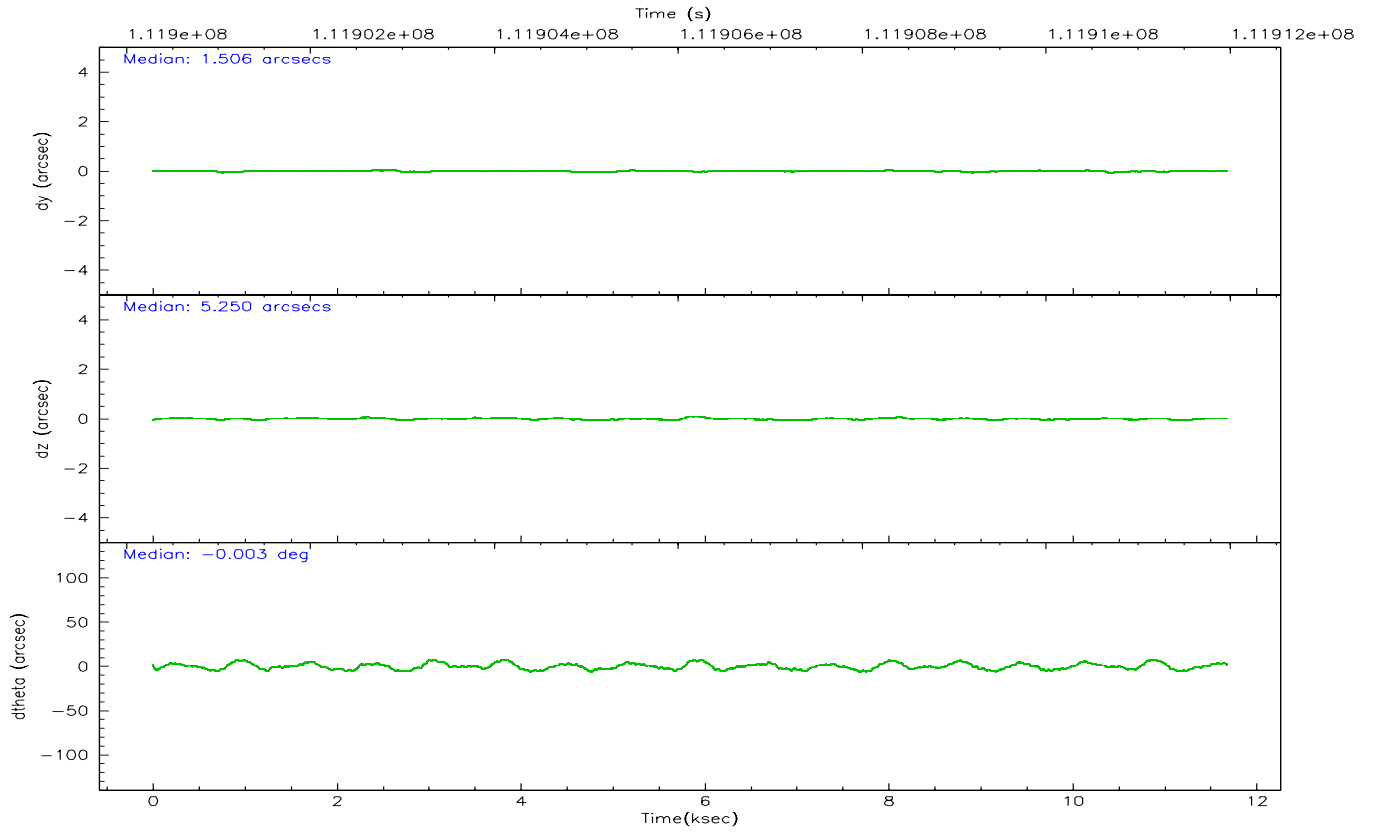
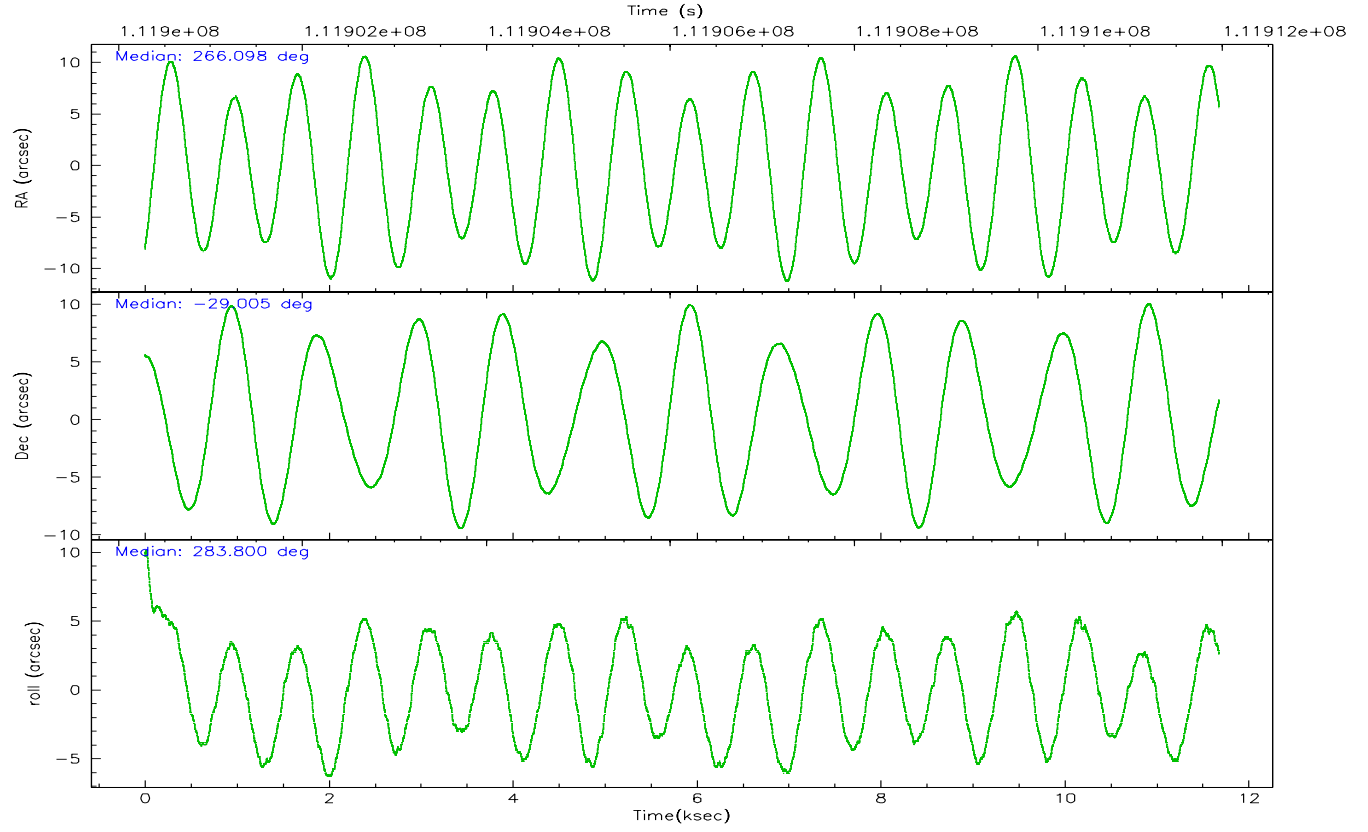
	ccd 0	ccd 1	ccd 2	ccd 3	ccd 6	ccd 7
grade 0 events	3266	3091	5220	3461	10807	1769
	11%	10%	14%	11%	25%	4%
grade 1 events	31	26	292	31	66	36
	0%	0%	0%	0%	0%	0%
grade 2 events	1123	1229	1713	1266	2753	5833
	3%	4%	4%	4%	6%	14%
grade 3 events	516	511	679	521	983	1354
	1%	1%	1%	1%	2%	3%
grade 4 events	476	542	684	528	1029	1374
	1%	1%	1%	1%	2%	3%
grade 5 events	1139	1290	1348	1257	1448	3116
	3%	4%	3%	4%	3%	7%
grade 6 events	928	982	1174	994	1832	12406
	3%	3%	3%	3%	4%	29%
grade 7 events	21161	20538	23923	23184	24180	15555
	73%	72%	68%	74%	56%	37%

## 2.2 Compared Parameters

Parameter	Planned	Actual	Parameter	Planned	Actual
Instrument	ACIS	ACIS	Obspar format version number	6	6
Detector	ACIS-012367	ACIS-012367	Obspar file type	PREDICTED	ACTUAL
Grating	NONE	NONE	Obspar update status	NONE	UPDATED
Data mode	FAINT	FAINT	Number of optional ACIS chips dropped	0	0
Observation mode	POINTING	POINTING	On-chip summing requested	N	N
Pointing RA	266.075893	266.0976930362054	Subarray requested	NONE	NONE
Pointing Dec	-28.985598	-29.00540566081022	Alternating exposures requested	N	N
Pointing Roll	283.588042	283.8073028268839	Primary exposure time	0.000000	3.2
Roll angle	283.600000	283.600000			
Roll tolerance	2.000000	2.000000			
Roll constraint allows 180D rotation	N	N			
SIM focus pos (mm)	-0.782348	-0.7809083437167272			
SIM defocus (mm)	0	0.001439871863259334			
SIM translation stage pos (mm)	-233.592463	-233.5874344608287			
SIM translation stage offset (mm)	0	-0.005018542100998502			
Observation start time	111900464.184000	111900088.29295			
Observation start date	2001-07-19T03:26:40	2001-07-19T03:21:28			
Observation end time	111911964.184000	111912098.21842			
Observation end date	2001-07-19T06:38:20	2001-07-19T06:41:38			
Read mode	TIMED	TIMED			

## 2.3 Aspect





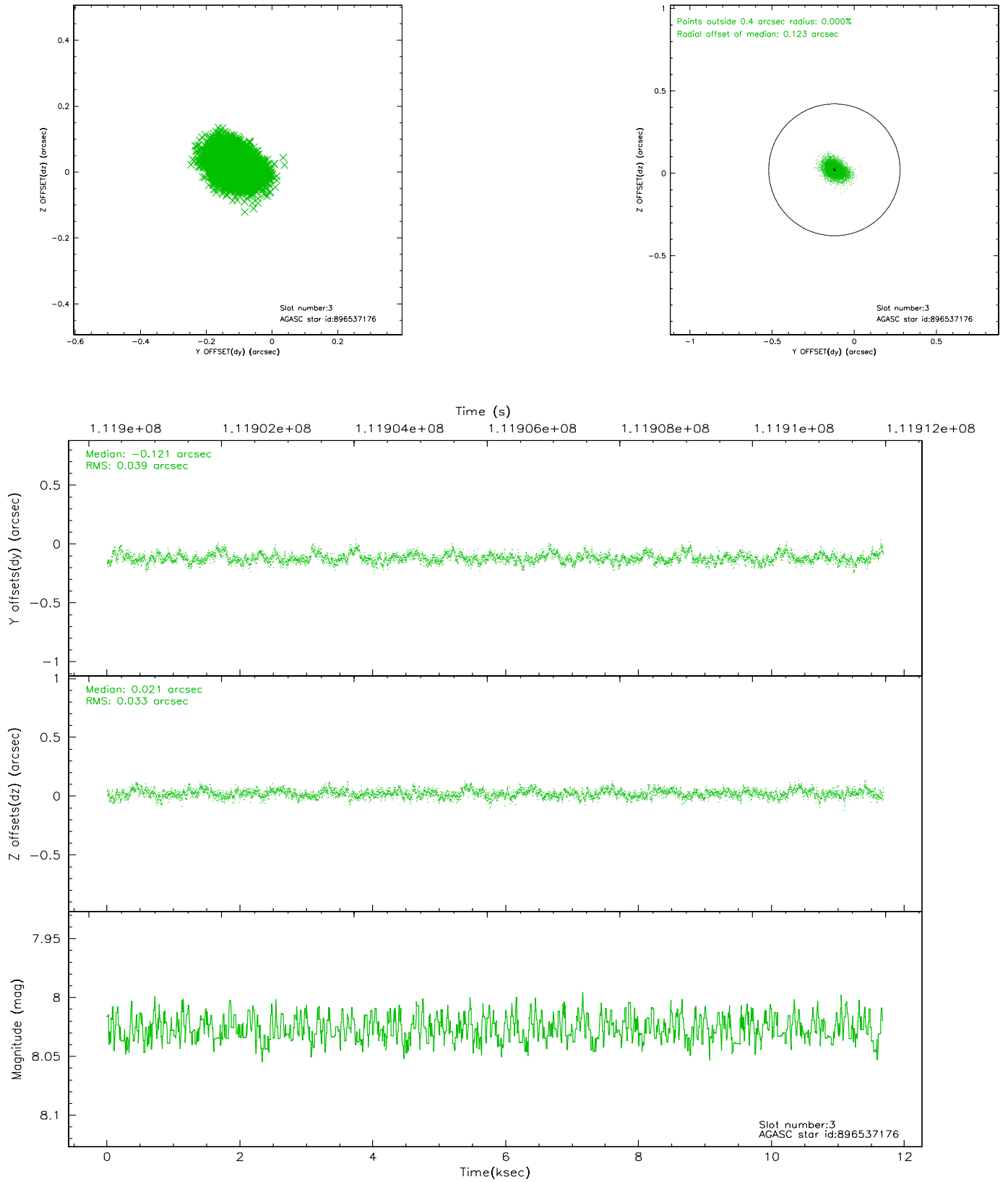
### Slot Statistics

slot	status	id	mag	n_pts	med_dy	med_dz	dr1	dr2	ra	dec	mean_y	mean_z
0	FID	ACIS-I-2	7.15	2849	-0.018	-0.029	0.029	0.043	0.000000	0.000000	-755.84	-835.00
1	FID	ACIS-I-4	7.17	2849	-0.091	0.027	0.025	0.044	0.000000	0.000000	2157.92	1071.07
2	FID	ACIS-I-5	7.23	2848	0.007	0.067	0.021	0.046	0.000000	0.000000	-1809.13	1069.36
3	GUIDE	896537176	8.03	5698	-0.121	0.021	0.053	0.091	266.498272	-28.678259	-759.09	1555.96
4	GUIDE	896540808	7.50	5699	-0.029	0.015	0.042	0.069	265.985401	-29.308604	1064.53	-548.96
5	GUIDE	896536320	8.97	5628	0.080	-0.074	0.063	0.101	266.369048	-29.307026	1343.28	622.30
6	GUIDE	896403224	8.29	5694	0.050	-0.007	0.058	0.094	265.612825	-29.438915	1249.52	-1795.05
7	GUIDE	896534664	8.19	5698	0.016	0.045	0.065	0.105	266.405570	-28.407461	-1775.39	1502.84

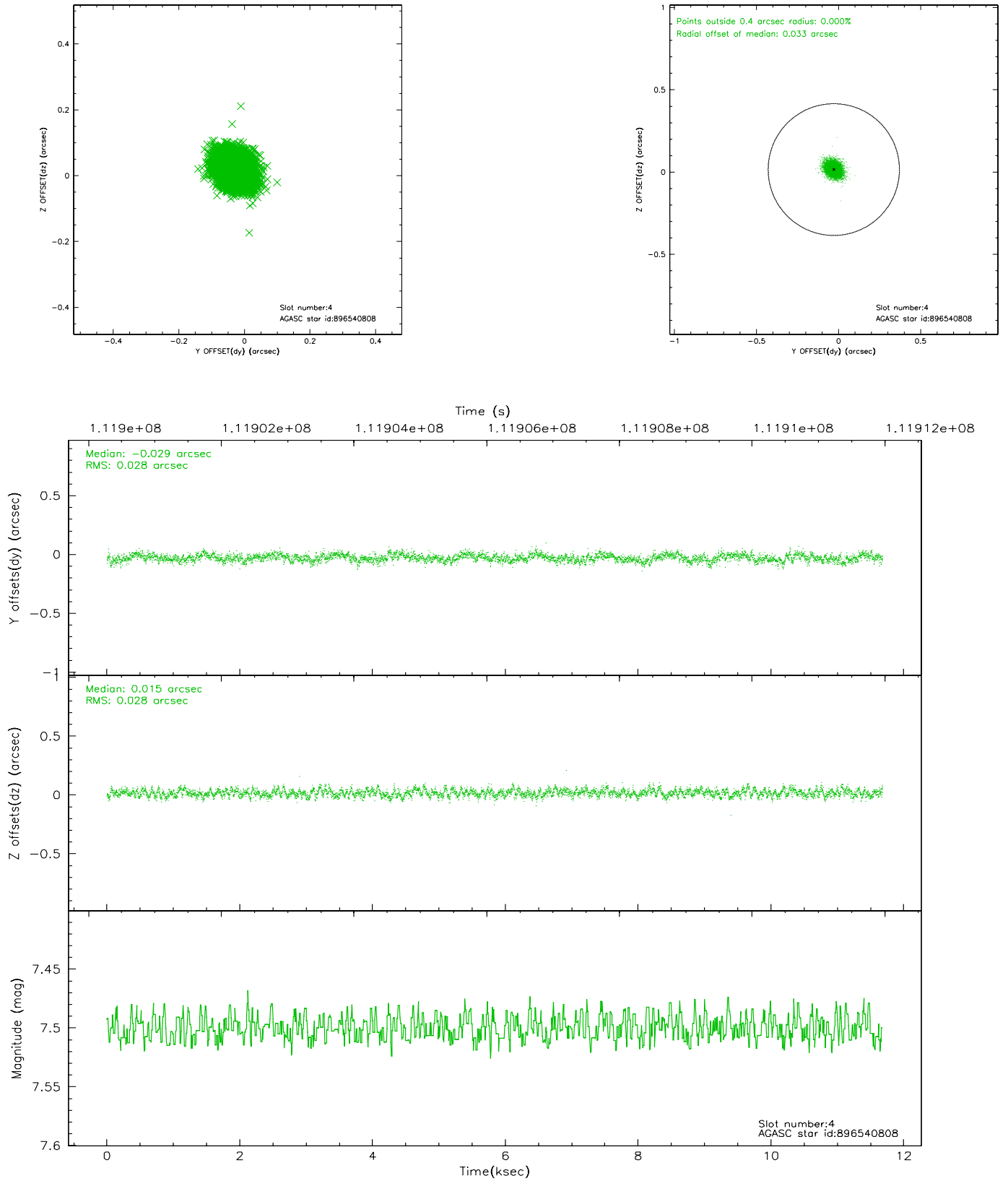


## 2.4 Star Slots

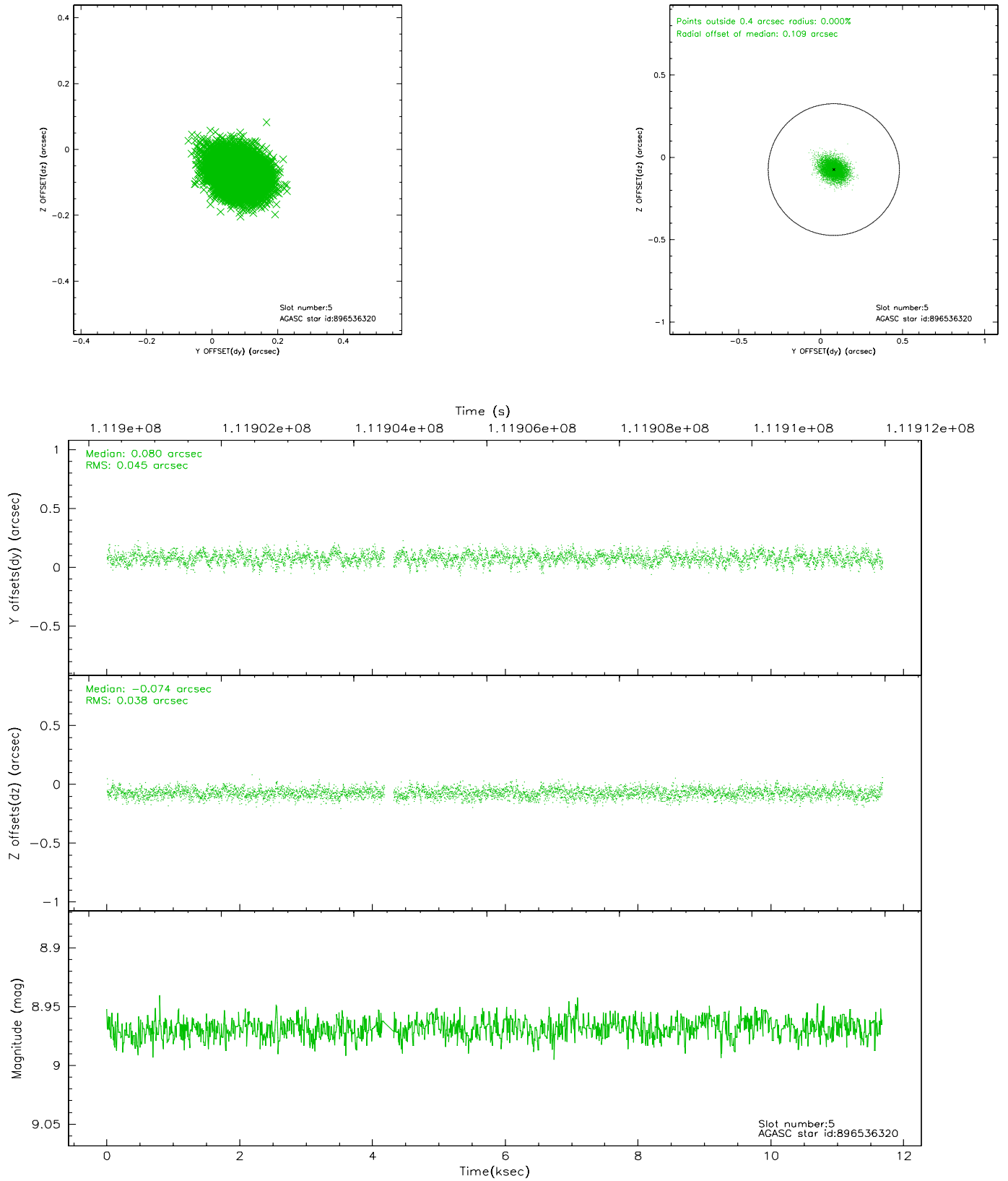
### 2.4.1 Slot 3



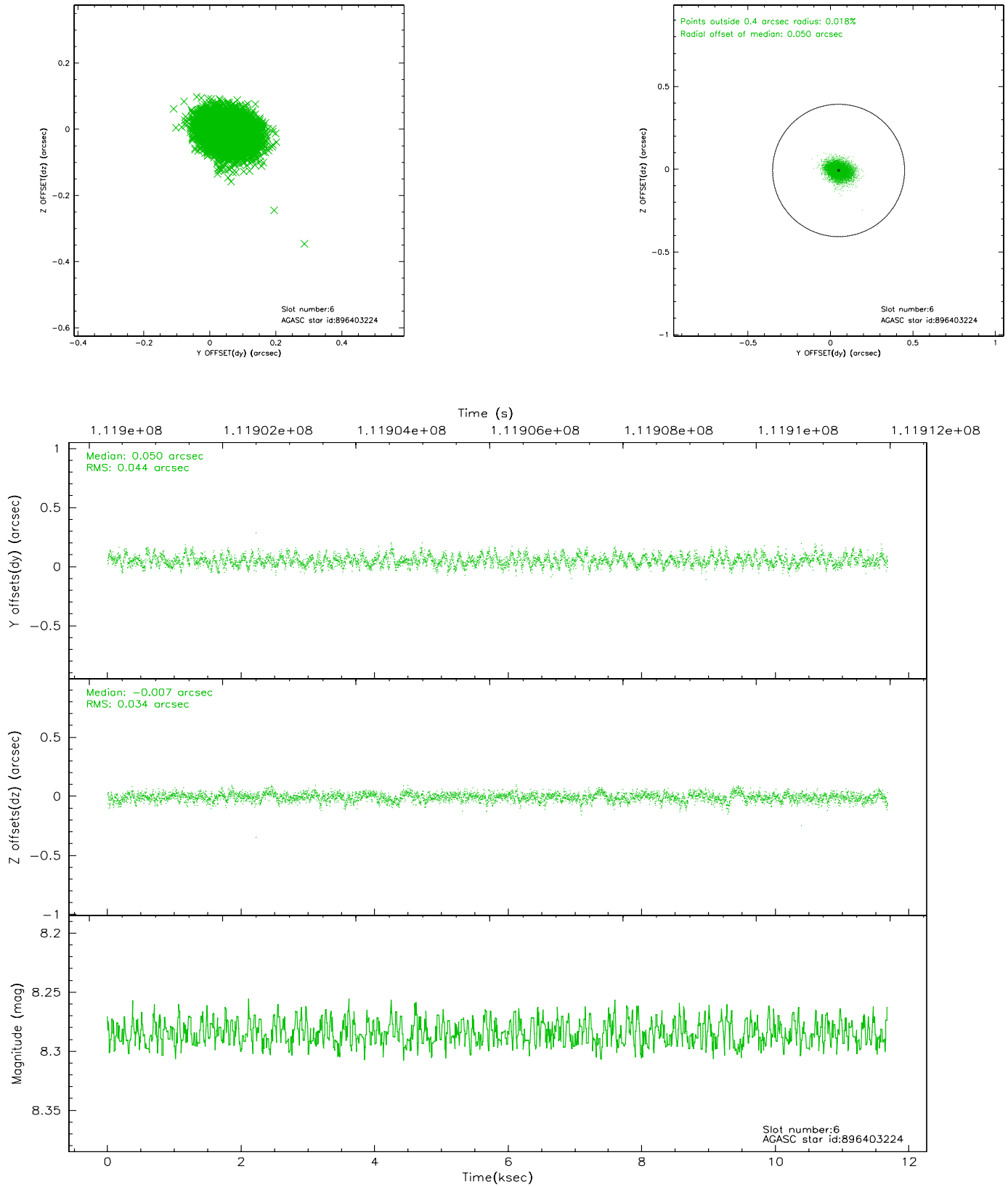
## 2.4.2 Slot 4



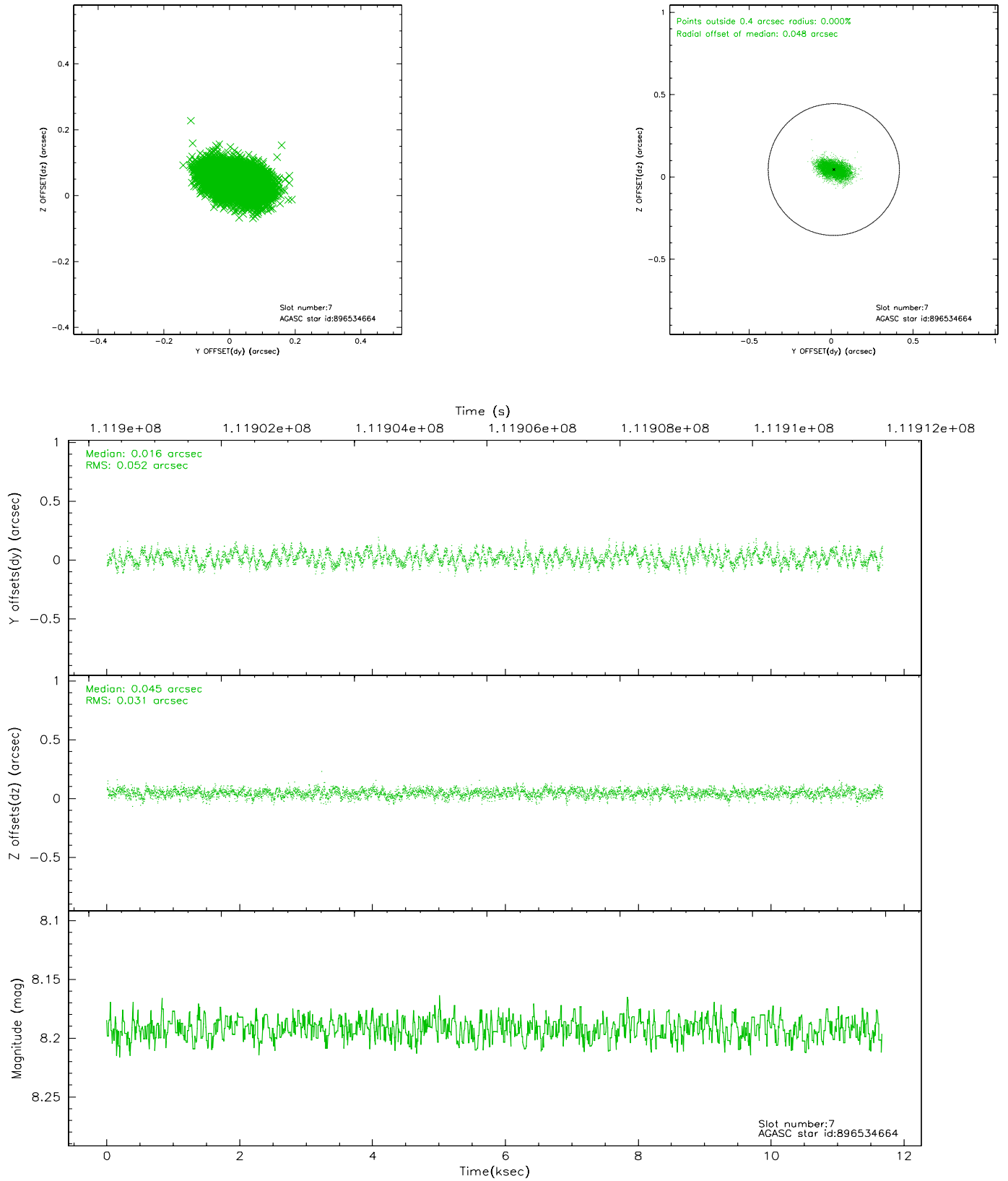
### 2.4.3 Slot 5



## 2.4.4 Slot 6

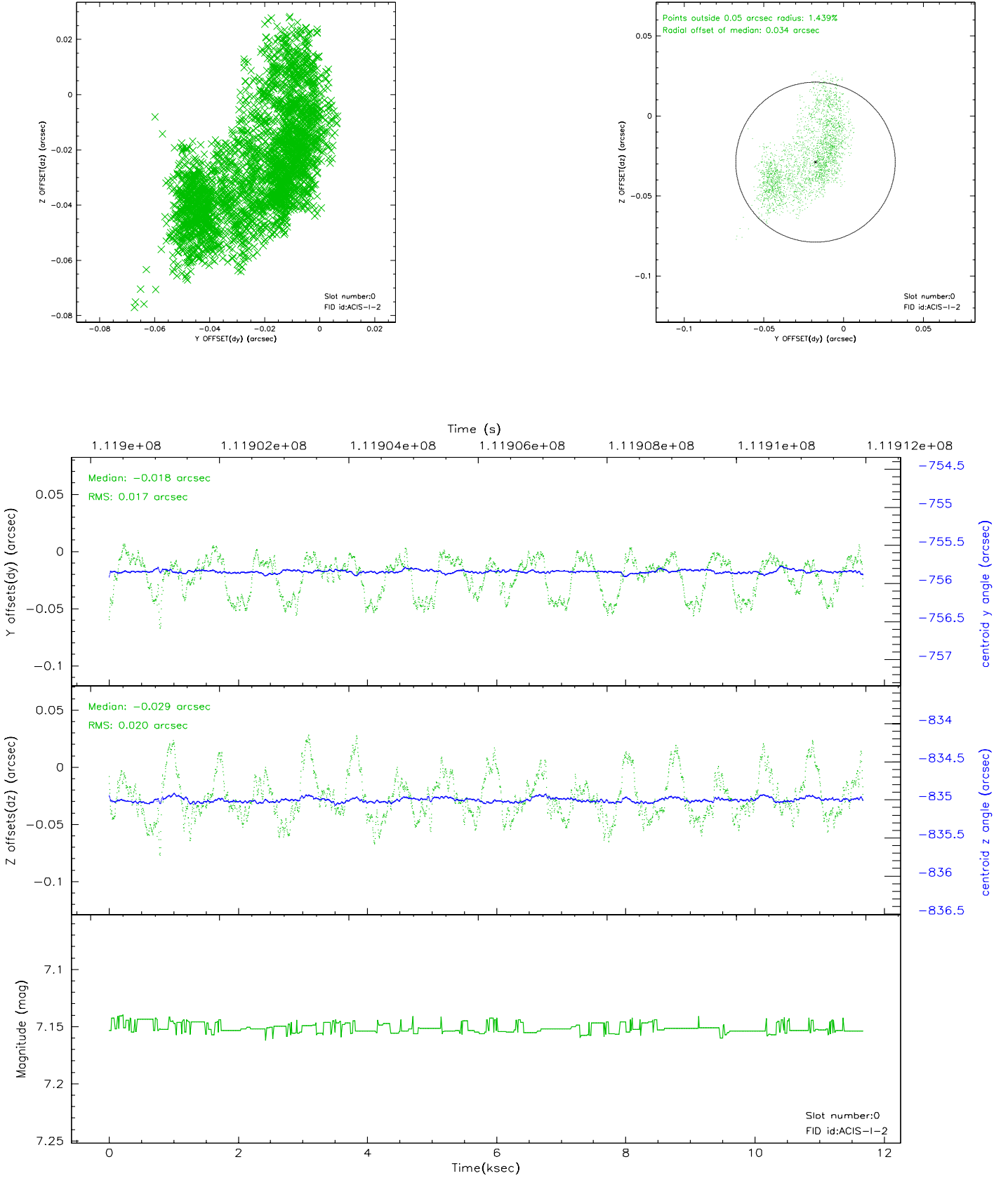


## 2.4.5 Slot 7

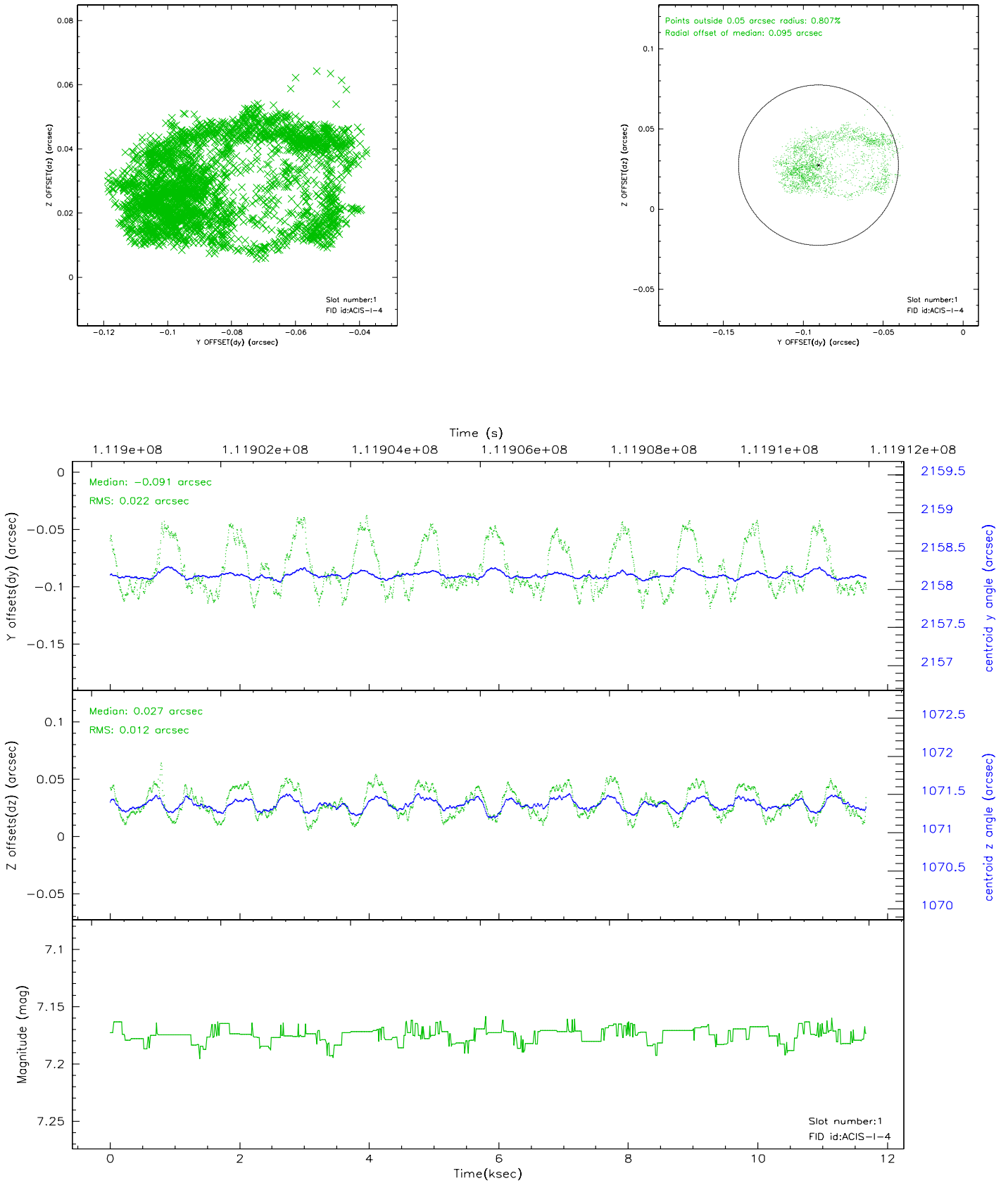


## 2.5 FID Slots

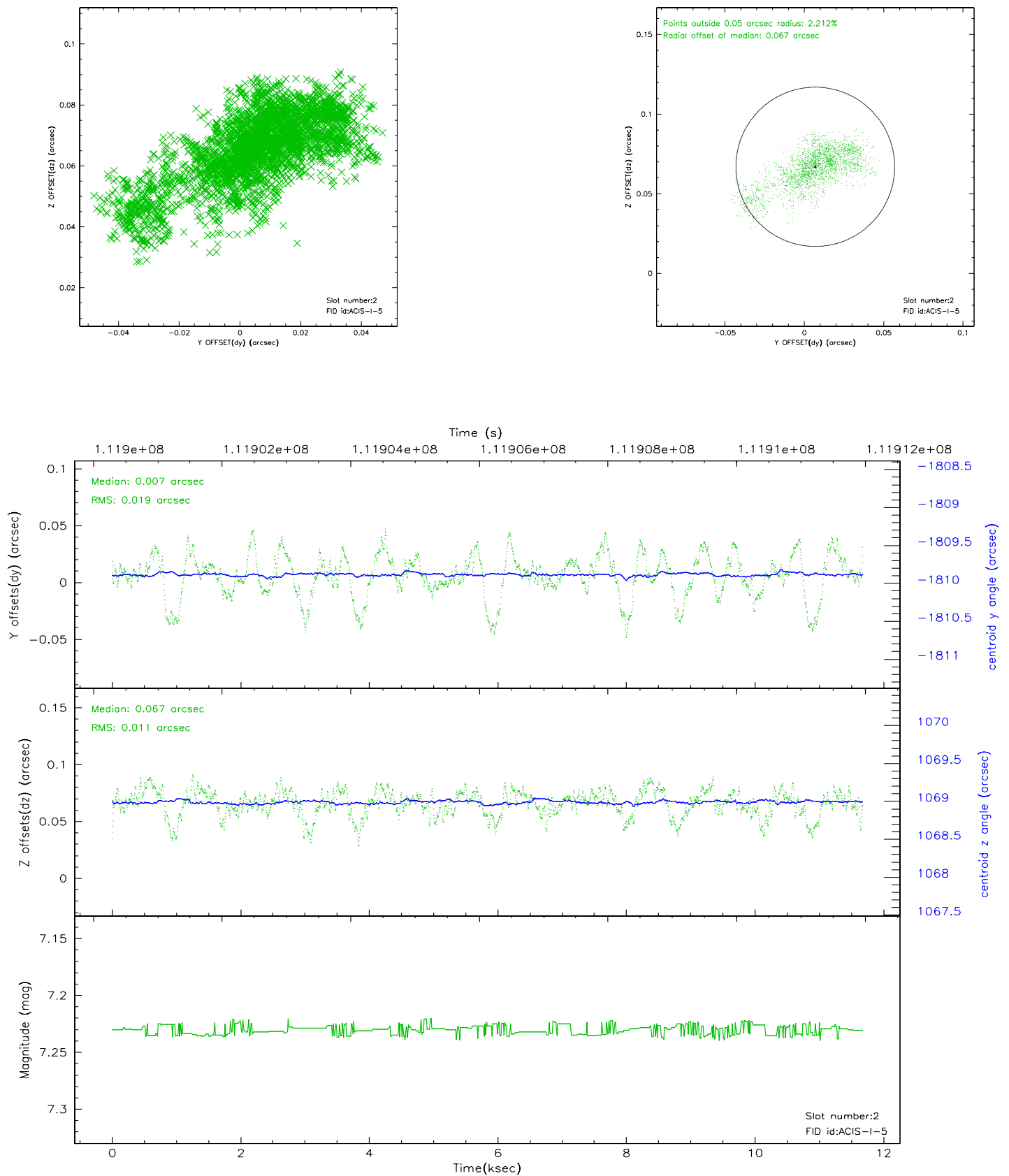
### 2.5.1 Slot 0



## 2.5.2 Slot 1

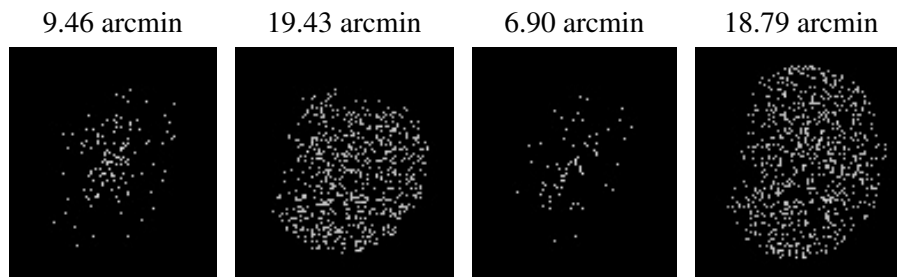


### 2.5.3 Slot 2





### 3 Point Sources



## A Summary

### A.1 Status

V&V Scientist	Beth Sundheim
V&V Date (YYYY-MM-DD)	2006.12.14
V&V Edition	1
V&V Disposition and Status	OK
V&V Charge Time	11.3

### A.2 Comments

Roll constraint OK.