

# V&V Reference Report

## L2 ASCDS Version : 8.4.5

Observation 2265 - L2 Version 3  
Chandra X-Ray Center

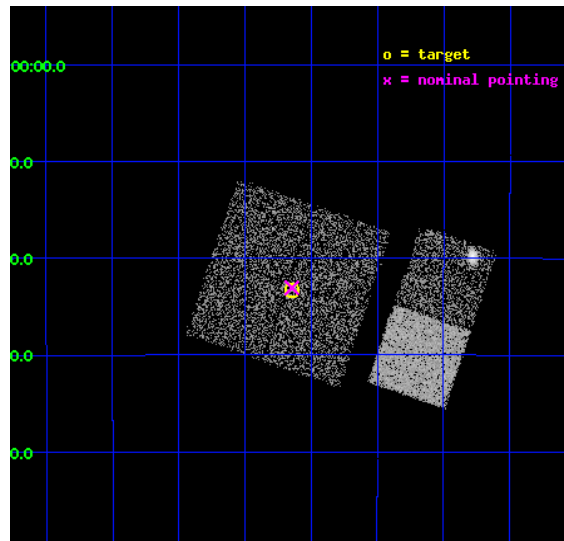
L2 Processing Date : Sep 17 2012

## Contents

<b>1</b>	<b>Front</b>	<b>2</b>
<b>2</b>	<b>OBI</b>	<b>3</b>
2.1	OBI . . . . .	3
2.1.1	Images . . . . .	3
2.1.2	Bias . . . . .	3
2.1.3	Parameters . . . . .	4
2.1.4	Events . . . . .	4
2.2	Compared Parameters . . . . .	5
2.3	Aspect . . . . .	6
2.4	Star Slots . . . . .	9
2.4.1	Slot 3 . . . . .	9
2.4.2	Slot 4 . . . . .	10
2.4.3	Slot 5 . . . . .	11
2.4.4	Slot 6 . . . . .	12
2.4.5	Slot 7 . . . . .	13
2.5	FID Slots . . . . .	14
2.5.1	Slot 0 . . . . .	14
2.5.2	Slot 1 . . . . .	15
2.5.3	Slot 2 . . . . .	16
<b>A</b>	<b>Summary</b>	<b>17</b>
A.1	Status . . . . .	17
A.2	Comments . . . . .	17

# 1 Front

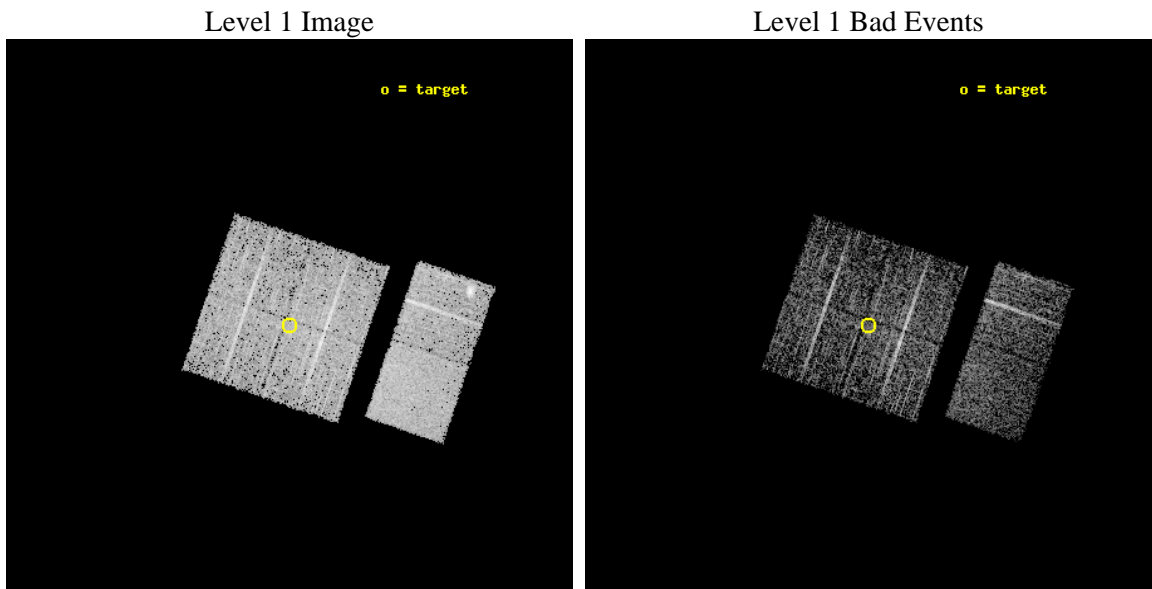
seq_num	900092	Sequence number
obs_id	2265	Observation id
title	CHANDRA OBSERVATION OF HARD X-RAY SOURCES DISCOVERED WITH ASCA	Pro
observer	Dr Yoshihiro Ueda	Principal investigator
object	AGX~J231008-2223	Source name
dtcycle	0	&#160
cycle	P	events from which exps? Prim/Second/Both
ra_targ	347.535833	Observer's specified target RA [deg]
dec_targ	-22.389111	Observer's specified target Dec [deg]
ra_nom	347.53624419494	Nominal RA [deg]
dec_nom	-22.384499889561	Nominal Dec [deg]
roll_nom	108.82468418457	Nominal Roll [deg]
revision	3	Processing version of data
ontime	3052.8000028282	Sum of GTIs [s]
livetime	3014.143611017	Livetime [s]
ontime0	3052.8000028282	Sum of GTIs [s]
ontime1	3052.8000028282	Sum of GTIs [s]
ontime2	3052.8000028282	Sum of GTIs [s]
ontime3	3052.8000028282	Sum of GTIs [s]
ontime6	3052.8000028282	Sum of GTIs [s]
ontime7	3052.8000028282	Sum of GTIs [s]
l2events	22830	Number of level 2 events



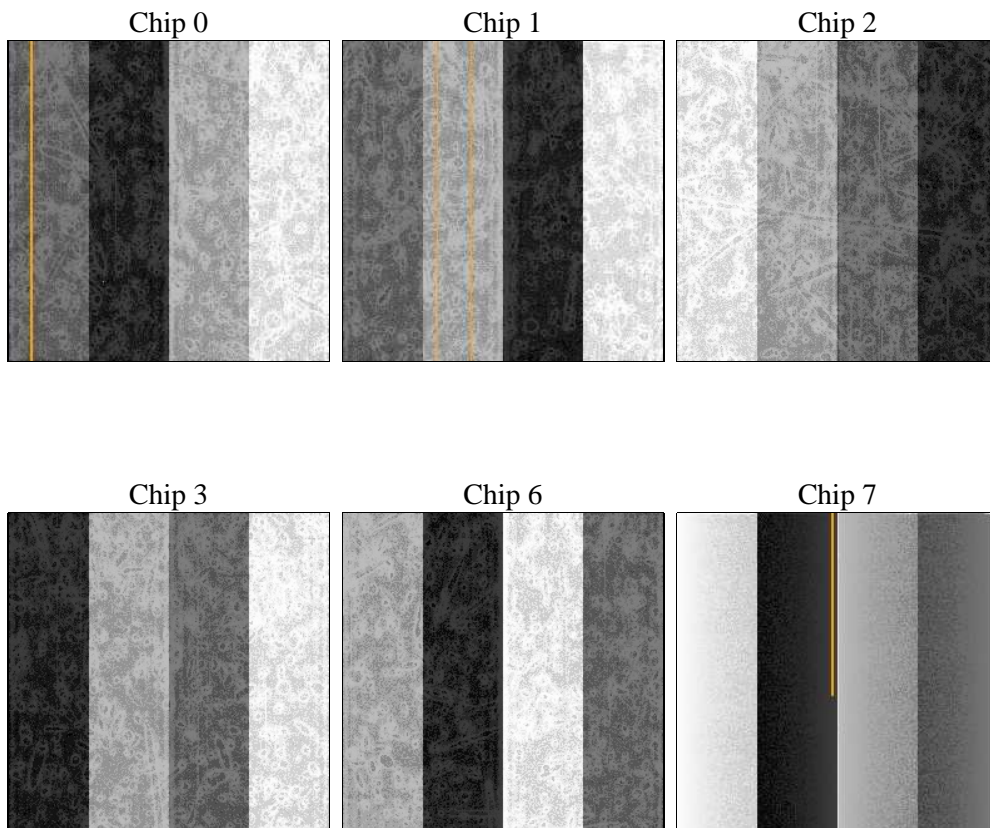
## 2 OBI

### 2.1 OBI

#### 2.1.1 Images



#### 2.1.2 Bias



### 2.1.3 Parameters

obi_num	0	Obi number	sched_exp_time	3300.000000	[s] Scheduled observation exposure time
ascdsver	8.4.5	Processing system revision	ontime	3052.8000028282	Sum of GTIs [s]
caldsver	4.5.1.1	&#160	ontime0	3052.8000028282	Sum of GTIs [s]
date	2012-09-17T22:21:24	Date and time of file creation	ontime1	3052.8000028282	Sum of GTIs [s]
revision	3	Processing version of data	ontime2	3052.8000028282	Sum of GTIs [s]
			ontime3	3052.8000028282	Sum of GTIs [s]
			ontime6	3052.8000028282	Sum of GTIs [s]
			ontime7	3052.8000028282	Sum of GTIs [s]
			l1events	134690	Number of level 1 events

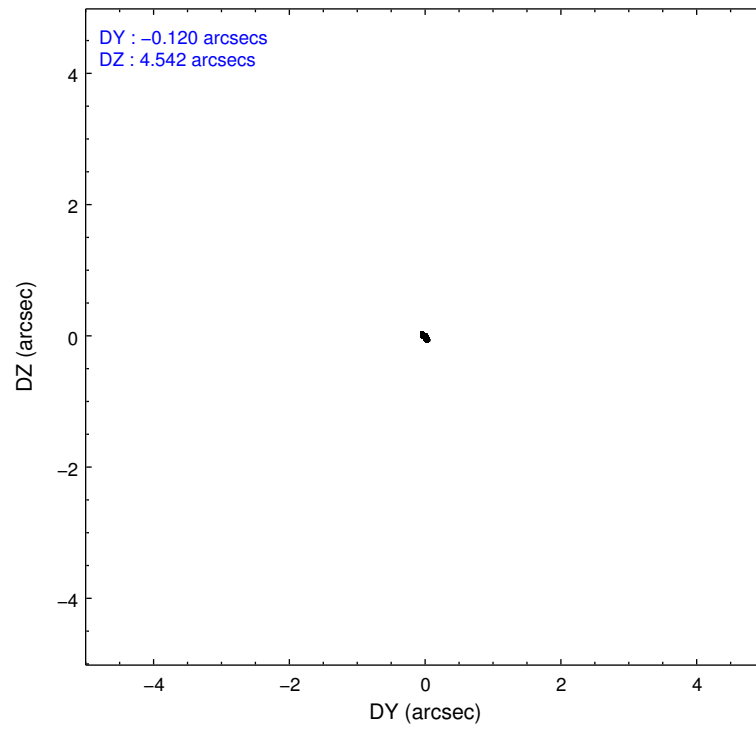
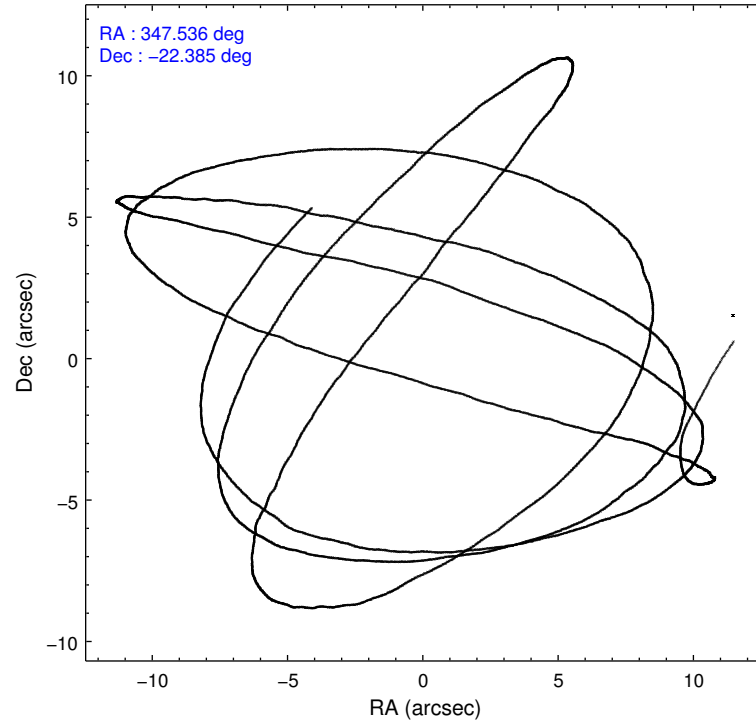
### 2.1.4 Events

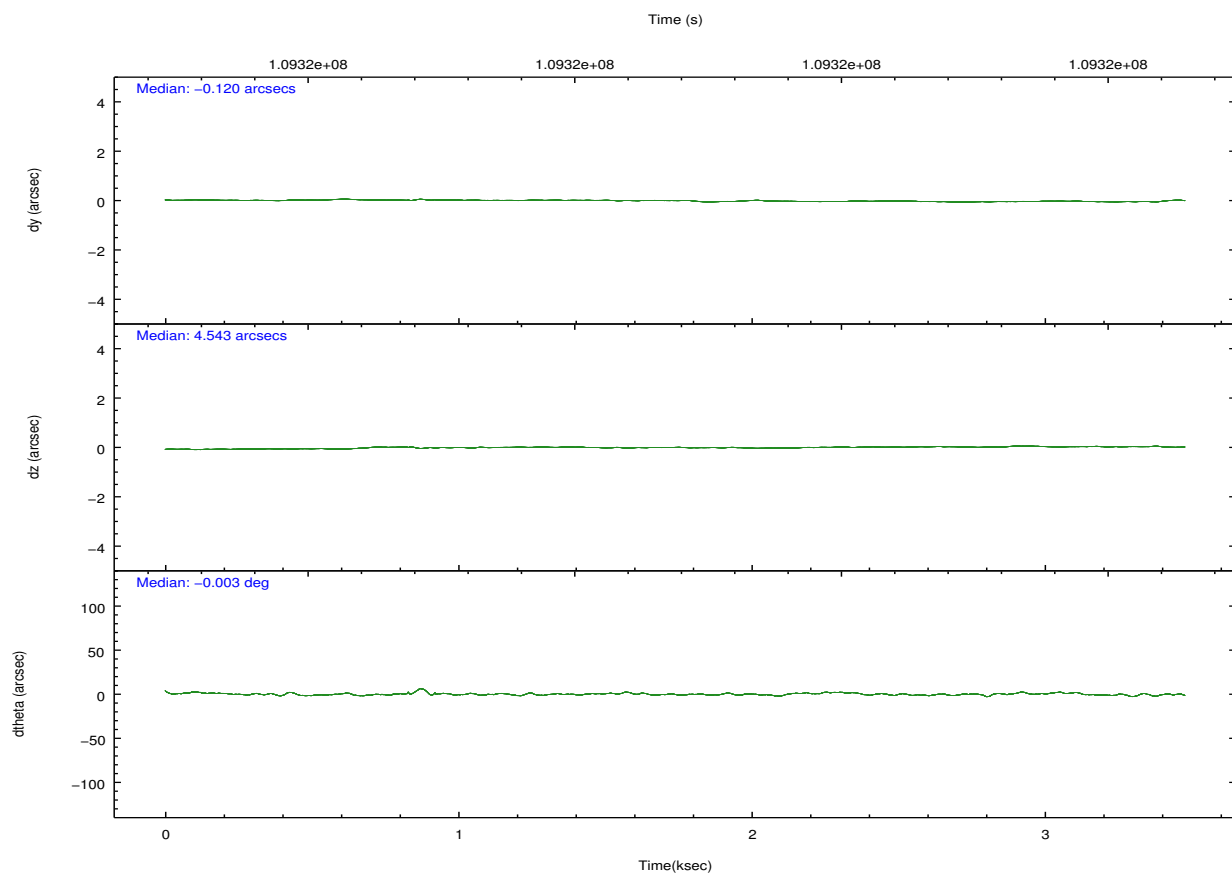
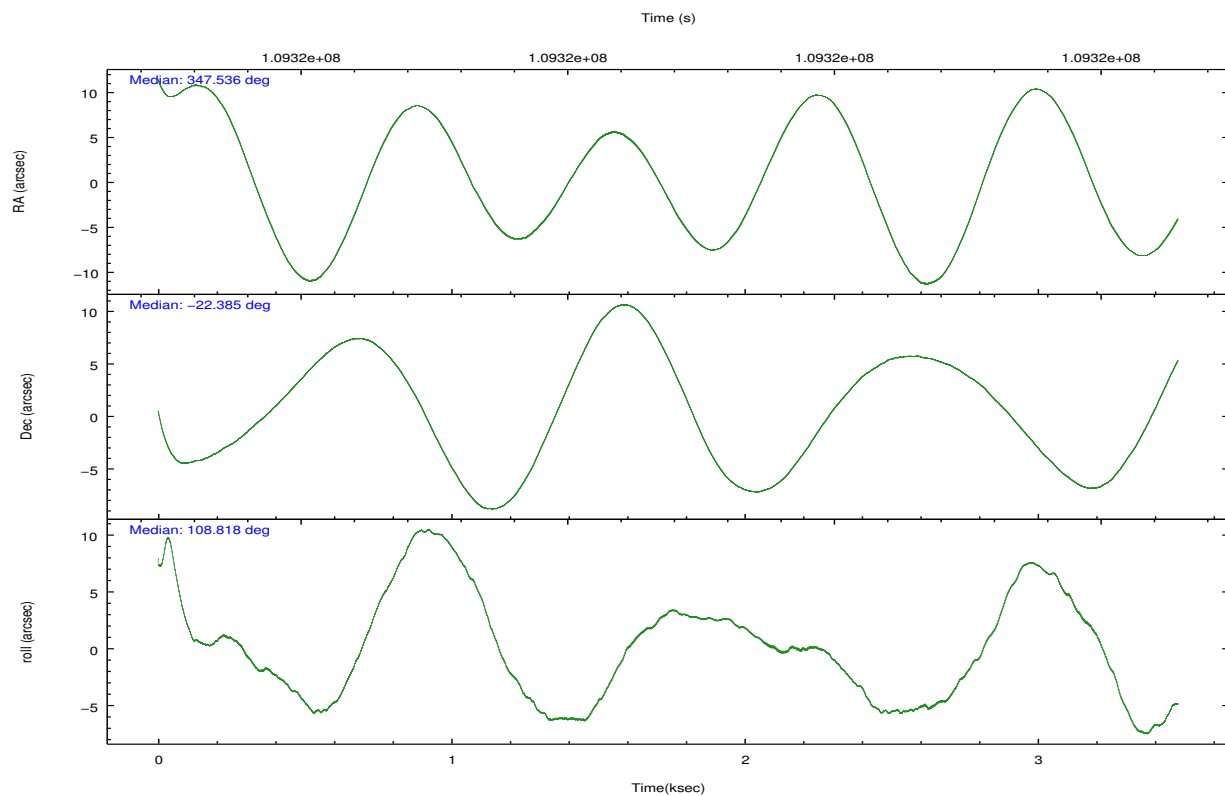
	ccd 0	ccd 1	ccd 2	ccd 3	ccd 6	ccd 7		ccd 0	ccd 1	ccd 2	ccd 3	ccd 6	ccd 7
level 1 events	19365	19864	21782	23423	23711	26545	grade 0 events	1172	1063	1173	1089	2037	1017
rejected events	16830	17363	19233	20935	19914	15390		6%	5%	5%	4%	8%	3%
rejected %	86%	87%	88%	89%	83%	57%	grade 1 events	7	11	10	12	14	22
								0%	0%	0%	0%	0%	0%
							grade 2 events	486	480	501	479	646	2210
								2%	2%	2%	2%	2%	8%
							grade 3 events	245	259	230	257	332	1031
								1%	1%	1%	1%	1%	3%
							grade 4 events	250	243	235	247	265	1014
								1%	1%	1%	1%	1%	3%
							grade 5 events	734	737	715	772	861	2531
								3%	3%	3%	3%	3%	9%
							grade 6 events	389	463	416	421	535	5908
								2%	2%	1%	1%	2%	22%
							grade 7 events	16082	16608	18502	20146	19021	12812
								83%	83%	84%	86%	80%	48%

## 2.2 Compared Parameters

Parameter	Planned	Actual	Parameter	Planned	Actual
Instrument	ACIS	ACIS	Obspar format version number	7	7
Detector	ACIS-012367	ACIS-012367	Obspar file type	PREDICTED	ACTUAL
Grating	NONE	NONE	Obspar update status	NONE	UPDATED
Data mode	FAINT	FAINT	Number of optional ACIS chips dropped	0	0
Observation mode	POINTING	POINTING	On-chip summing requested	N	N
[deg] Pointing RA	347.558565	347.5362441949361	Subarray requested	NONE	NONE
[deg] Pointing Dec	-22.402429	-22.38449988956058	Alternating exposures requested	N	N
[deg] Pointing Roll	108.624476	108.8246841845747	[s] Primary exposure time	0.000000	3.2
[mm] SIM focus pos	-0.782348	-0.7809083437167272			
[mm] SIM defocus	0	0.001439871863259334			
[mm] SIM translation stage pos	-233.592463	-233.5874344608287			
[mm] SIM translation stage offset	0	-0.005018542100998502			
[s] Observation start time (MET)	109320817.184000	109320004.31715			
Observation start date	2001-06-19T06:52:33	2001-06-19T06:40:04			
[s] Observation end time (MET)	109324117.184000	109324266.77982			
Observation end date	2001-06-19T07:47:33	2001-06-19T07:51:06			
Read mode	TIMED	TIMED			

## 2.3 Aspect



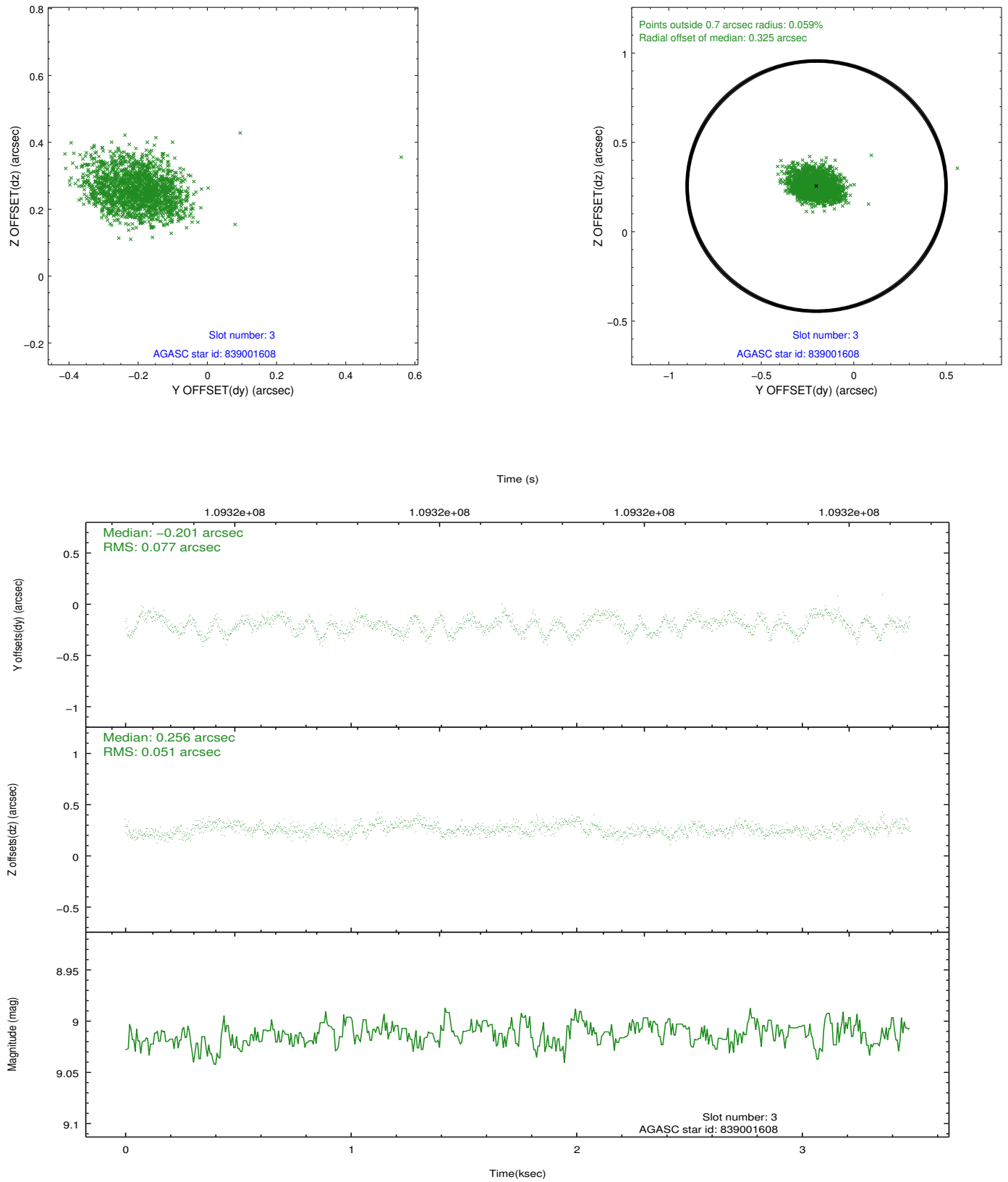


### Slot Statistics

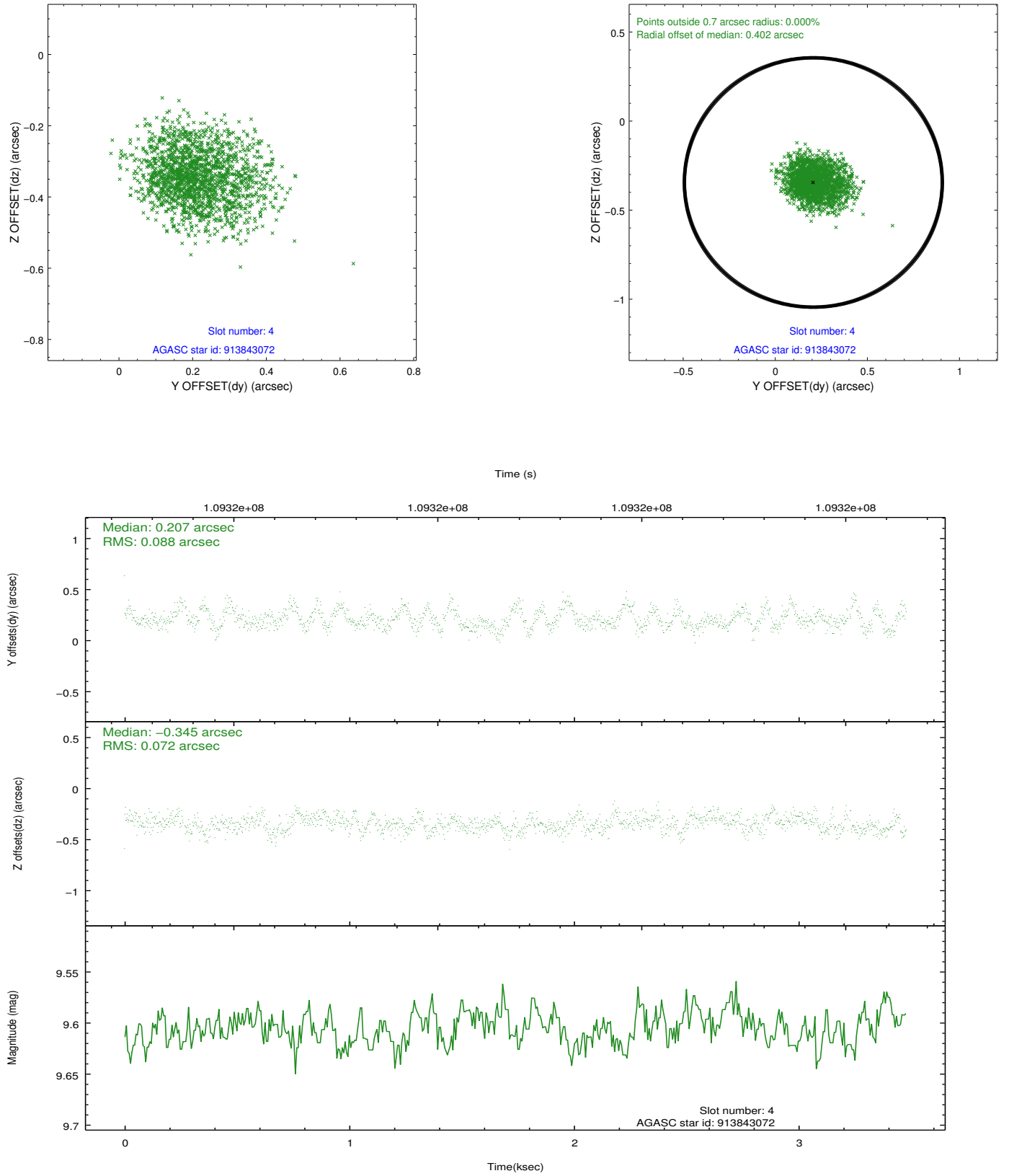
slot	status	id	mag	n_pts	med_dy	med_dz	dr1	dr2	ra	dec	mean_y	mean_z
0	FID	ACIS-I-2	7.14	849	-0.079	-0.028	0.009	0.019	0.000000	0.000000	-754.23	-834.26
1	FID	ACIS-I-4	7.17	849	-0.021	0.051	0.010	0.017	0.000000	0.000000	2159.04	1071.11
2	FID	ACIS-I-6	7.26	848	-0.000	0.041	0.011	0.021	0.000000	0.000000	408.24	1715.34
3	GUIDE	839001608	9.01	1697	-0.201	0.256	0.098	0.153	347.928467	-21.735788	1878.69	-1937.30
4	GUIDE	913843072	9.60	1685	0.207	-0.345	0.121	0.197	347.177644	-23.136268	-2100.41	2037.95
5	GUIDE	839001536	10.43	1696	-0.110	-0.224	0.155	0.246	347.234677	-21.972765	1809.45	532.72
6	GUIDE	913835352	9.81	1697	0.142	0.170	0.162	0.253	348.156592	-22.623655	-1390.89	-1626.84
7	GUIDE	839000400	9.72	1693	-0.037	0.134	0.129	0.207	347.952883	-22.218103	207.67	-1457.05

## 2.4 Star Slots

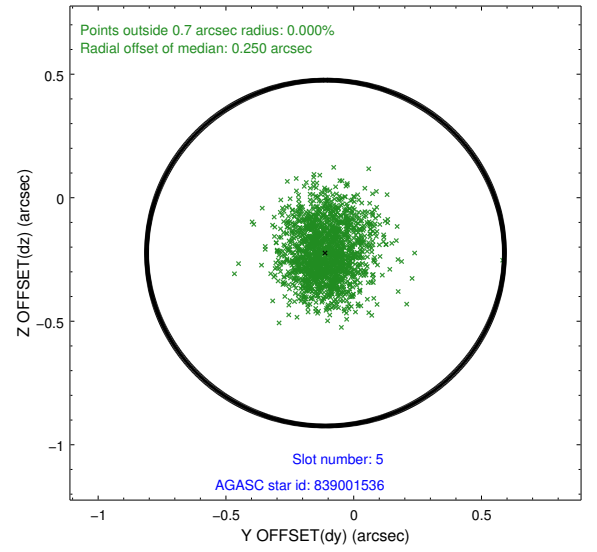
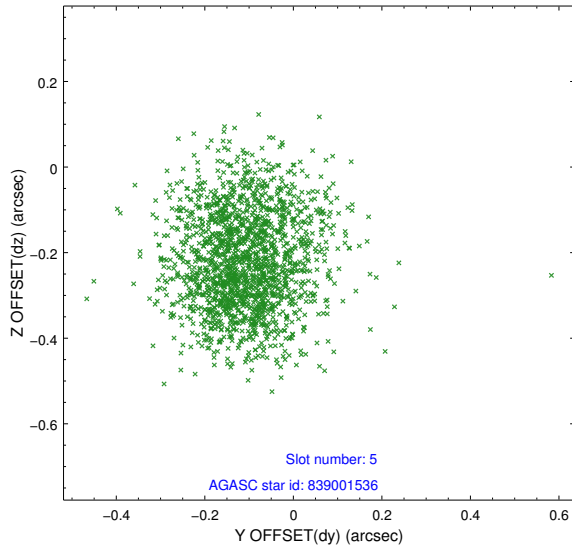
### 2.4.1 Slot 3



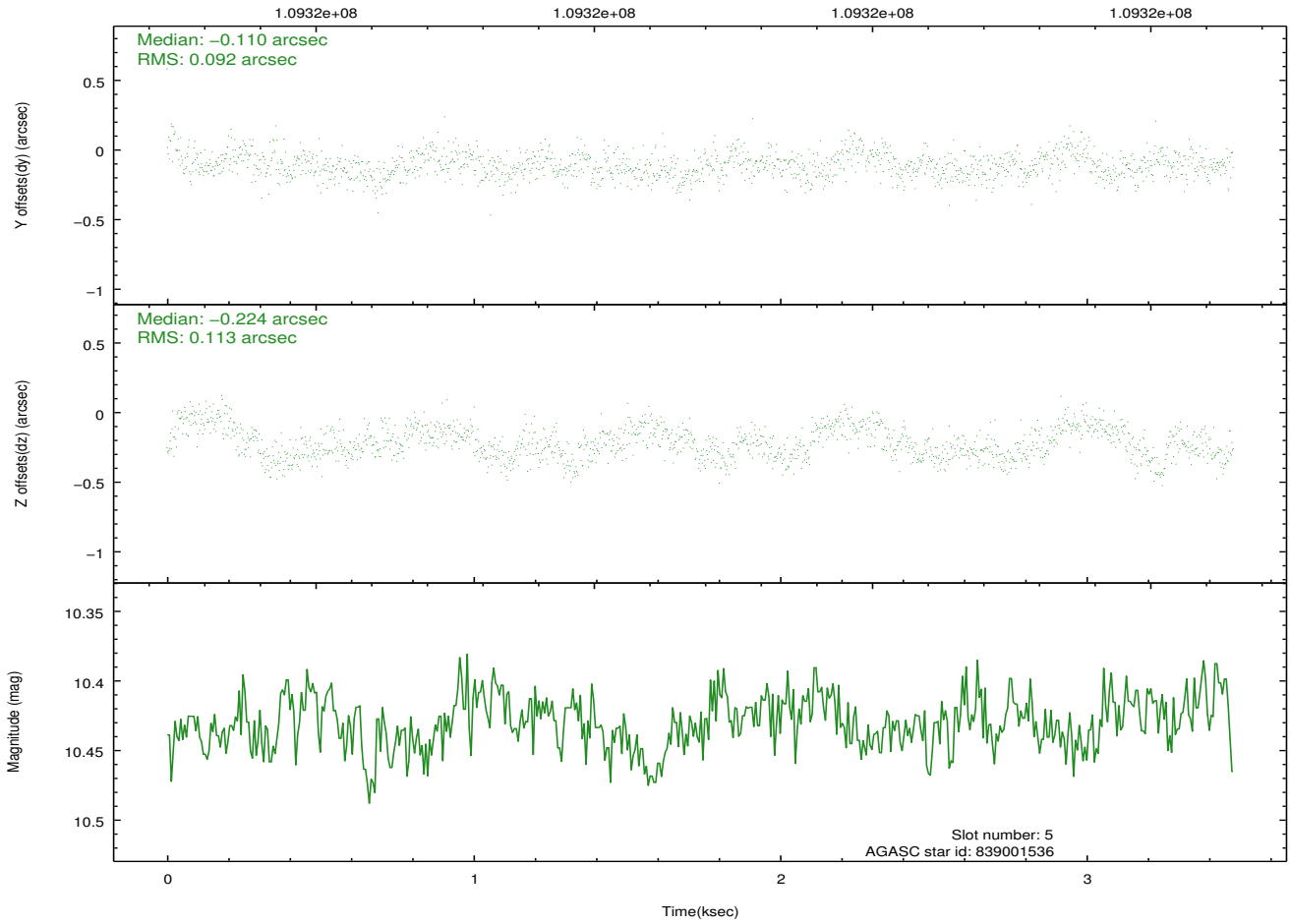
## 2.4.2 Slot 4



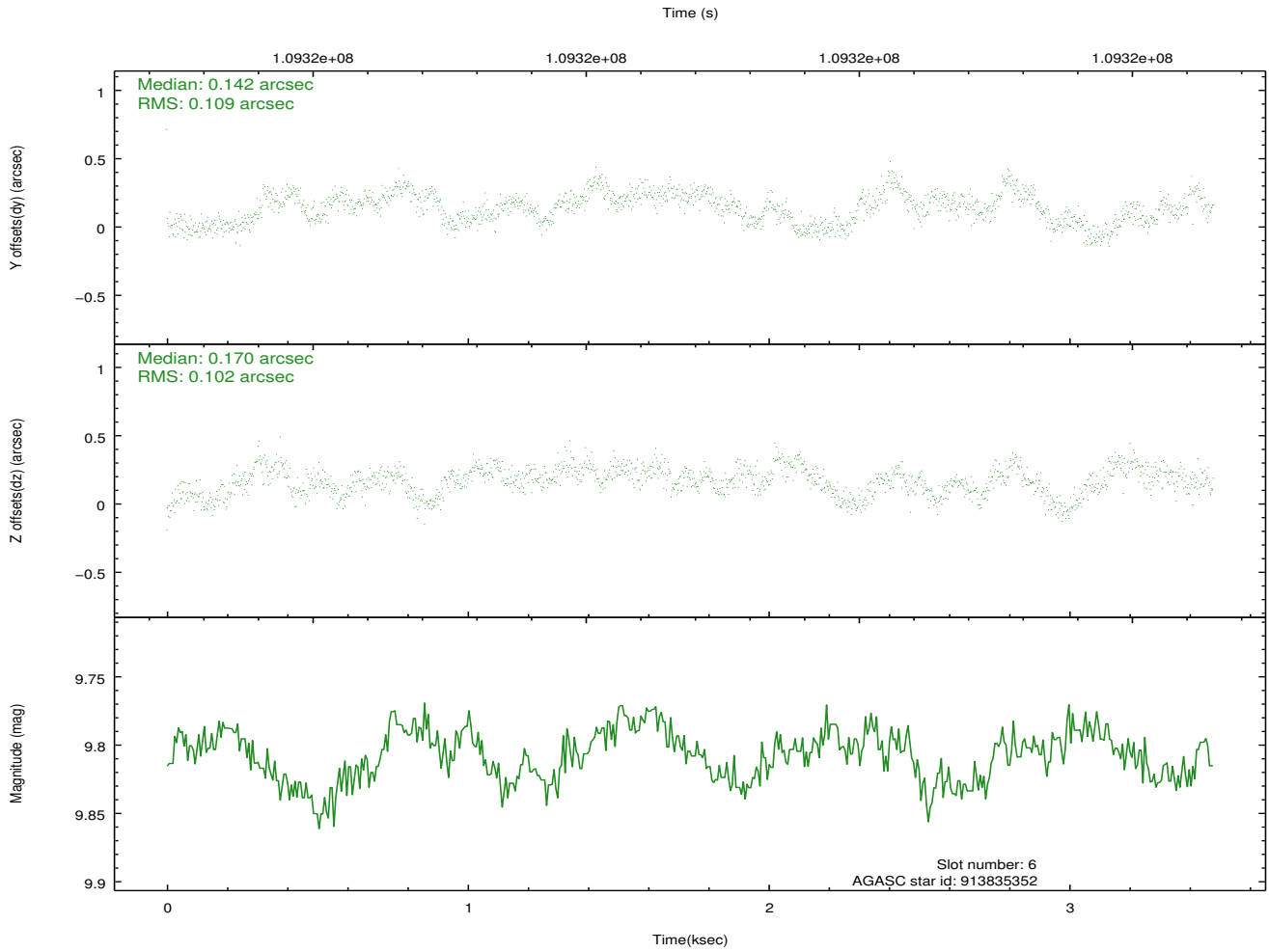
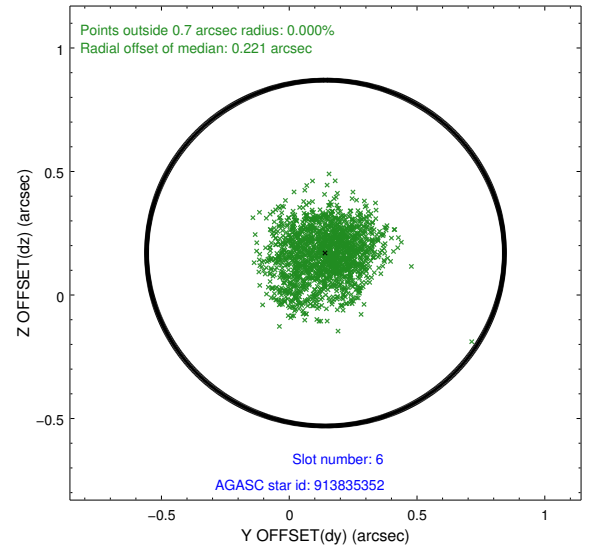
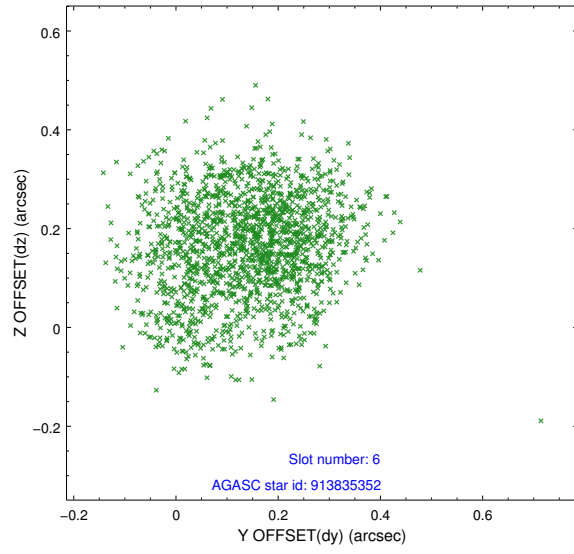
### 2.4.3 Slot 5



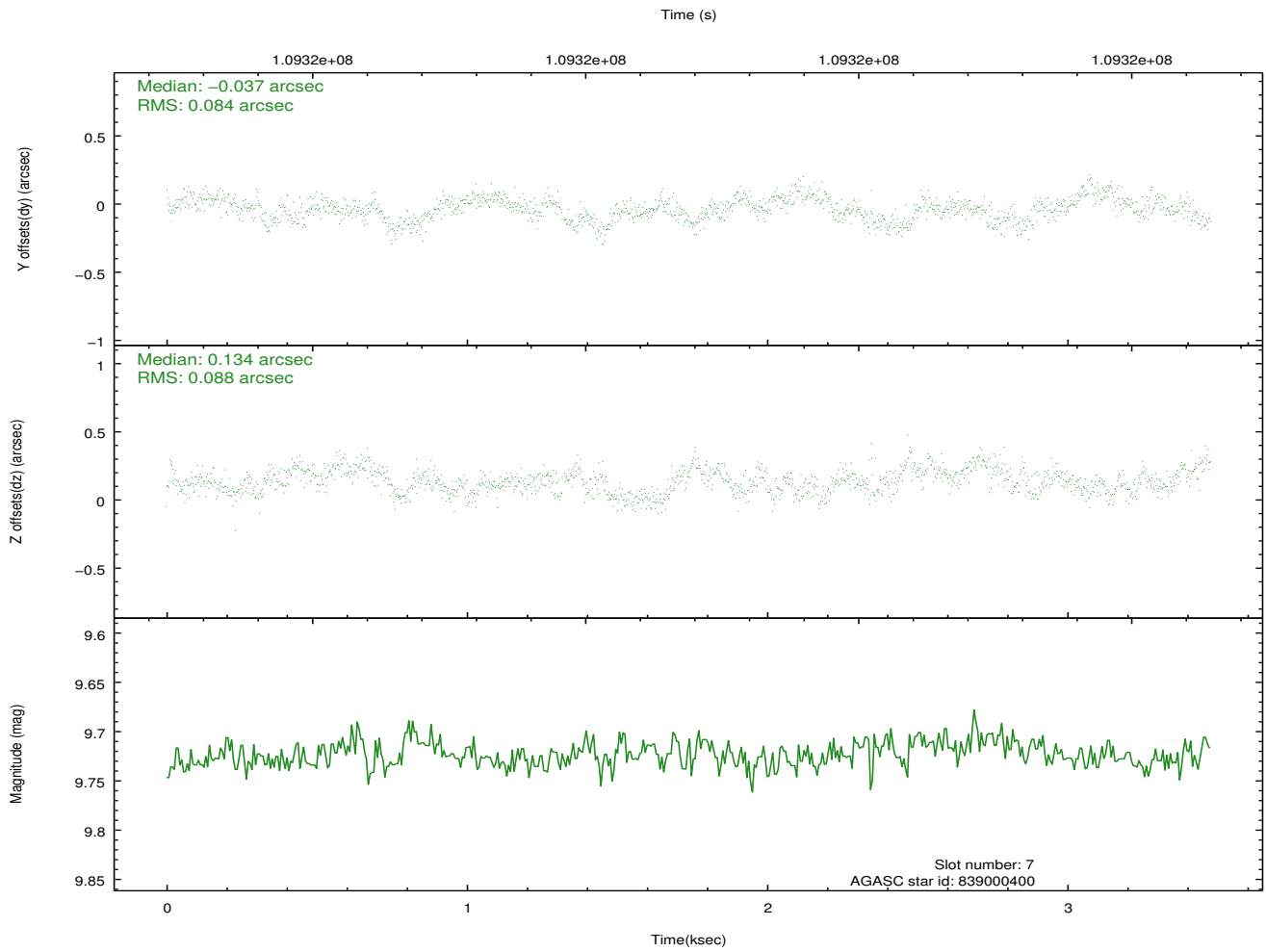
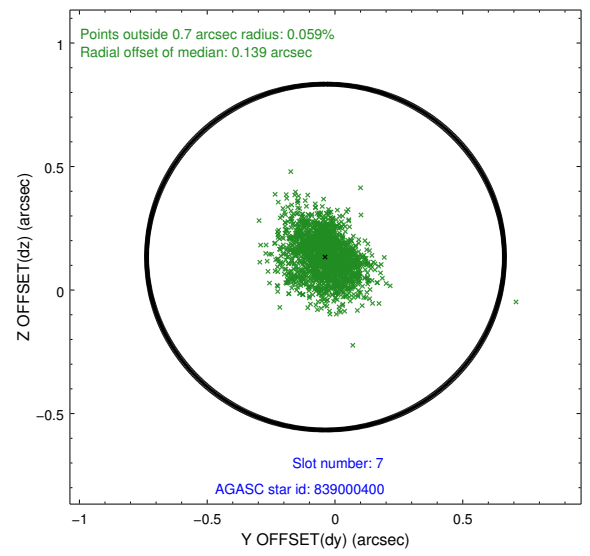
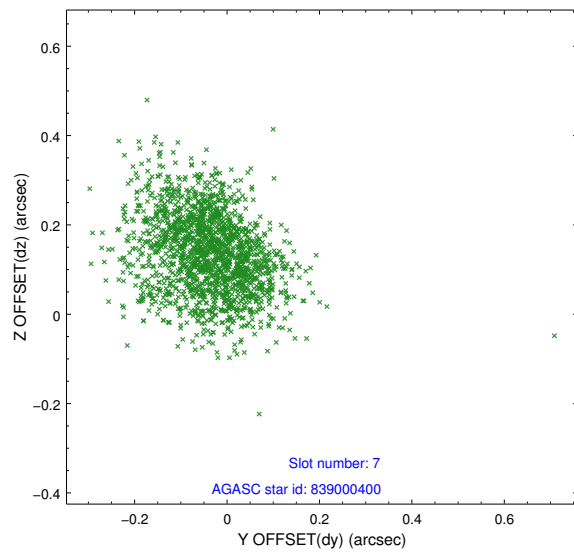
Time (s)



## 2.4.4 Slot 6

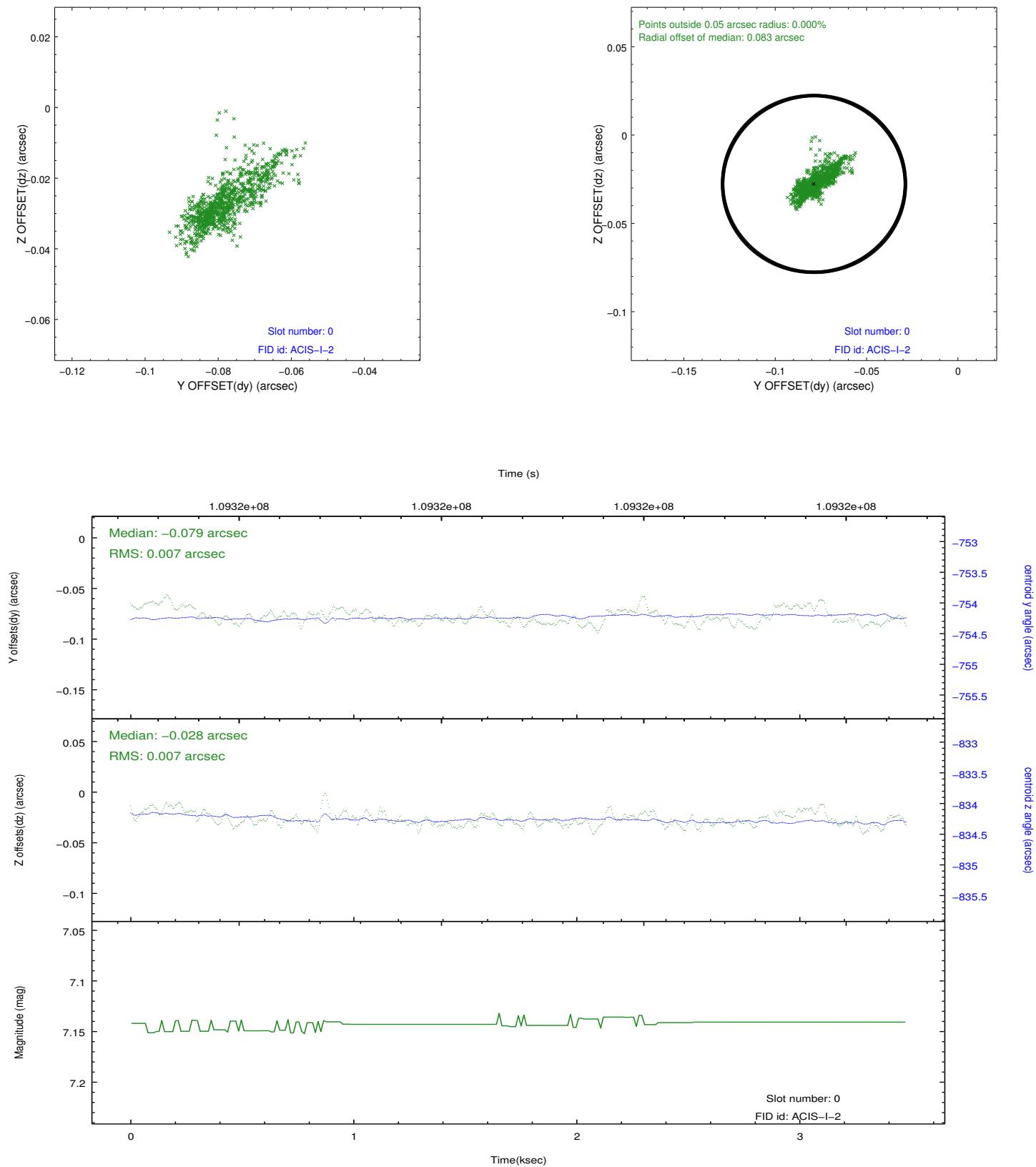


## 2.4.5 Slot 7

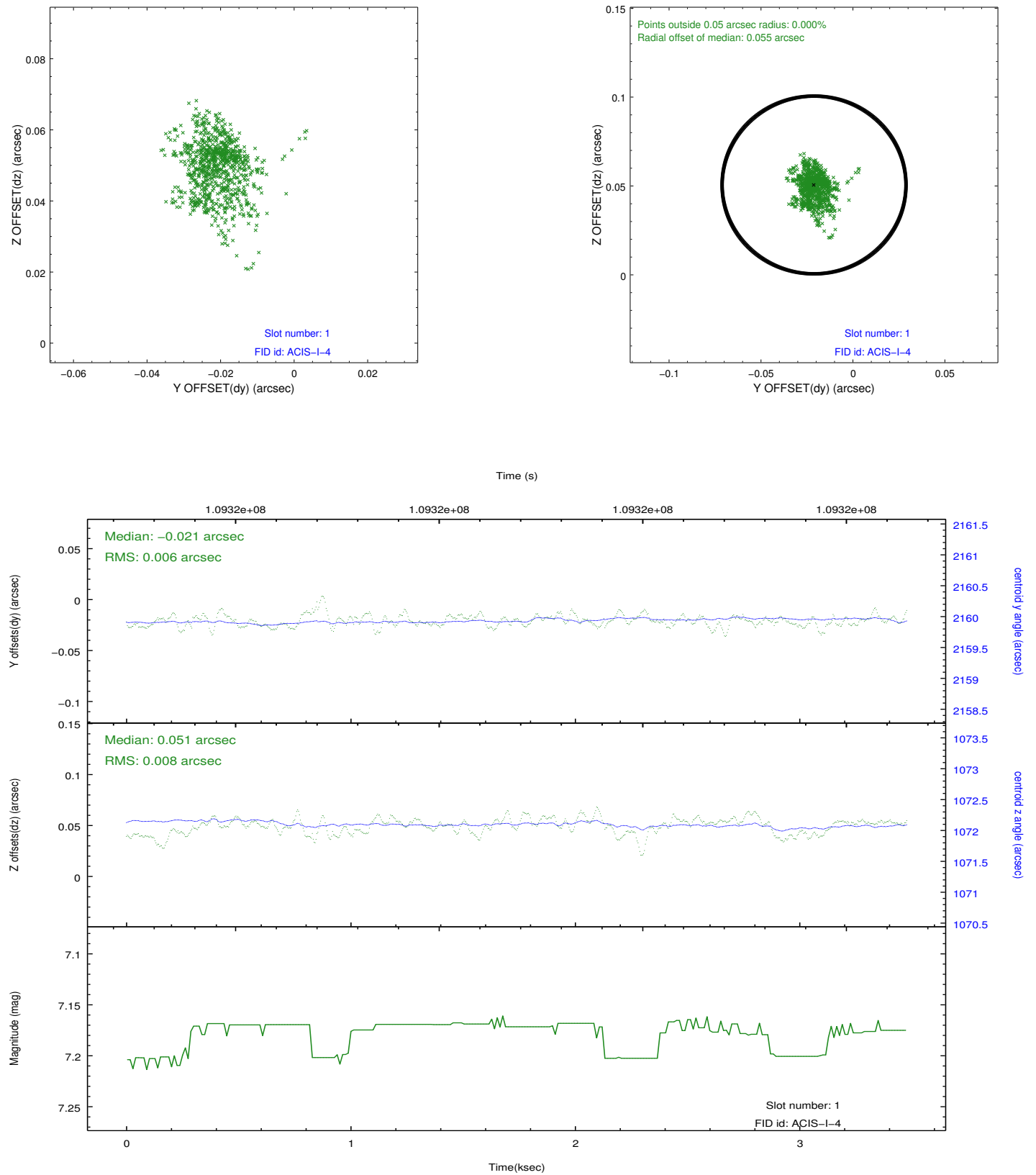


# 2.5 FID Slots

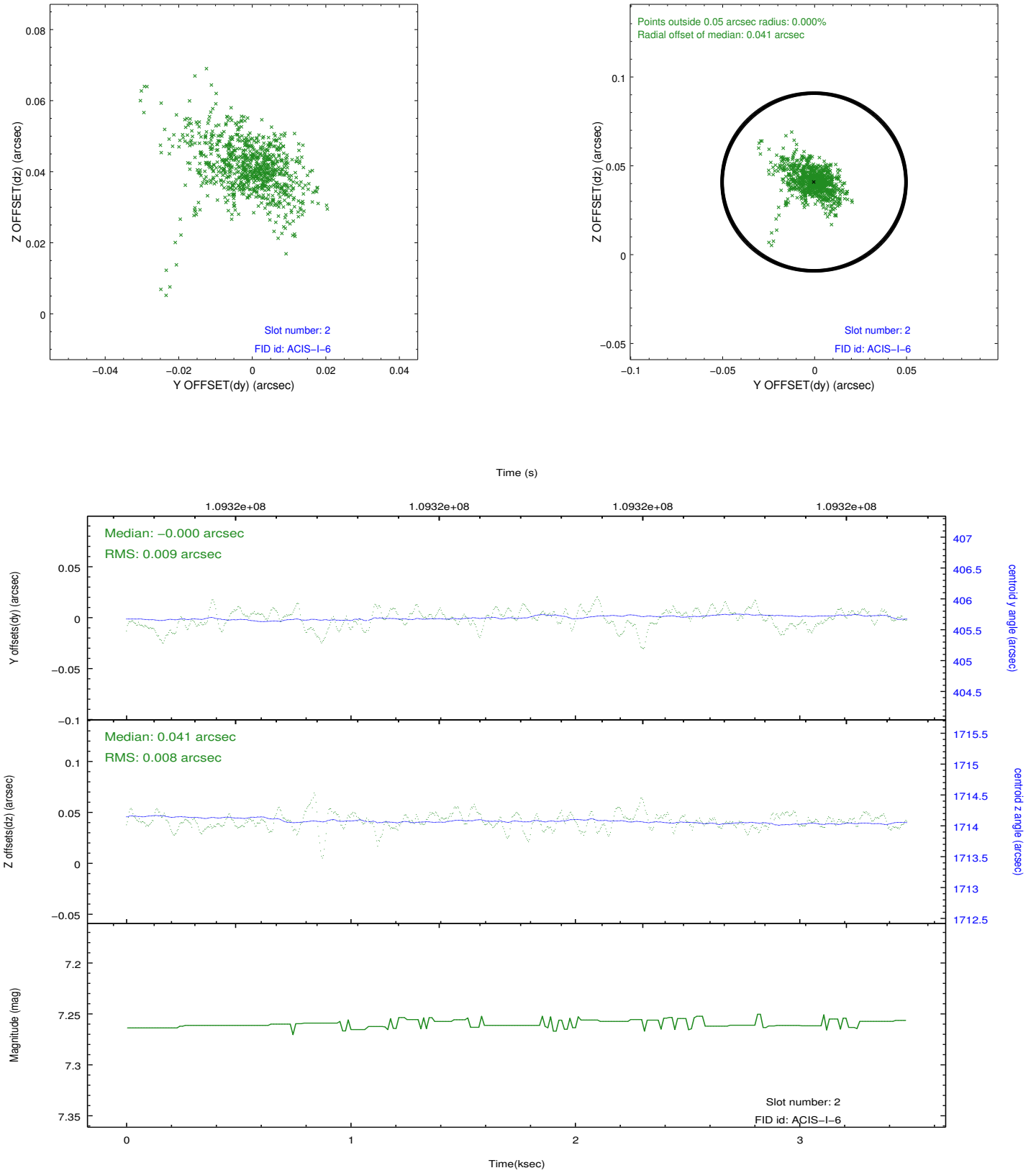
## 2.5.1 Slot 0



## 2.5.2 Slot 1



### 2.5.3 Slot 2



## A Summary

### A.1 Status

V&V Scientist	Beth Sundheim
V&V Date (YYYY-MM-DD)	2012.09.20
V&V Edition	1
V&V Disposition and Status	OK
V&V Charge Time	3.1

### A.2 Comments

Charge time for this observation remains at previous value of 3.1 ksec.