

V&V Reference Report

L2 ASCDS Version : 7.6.10

Observation 2185 - L2 Version 001
Chandra X-Ray Center

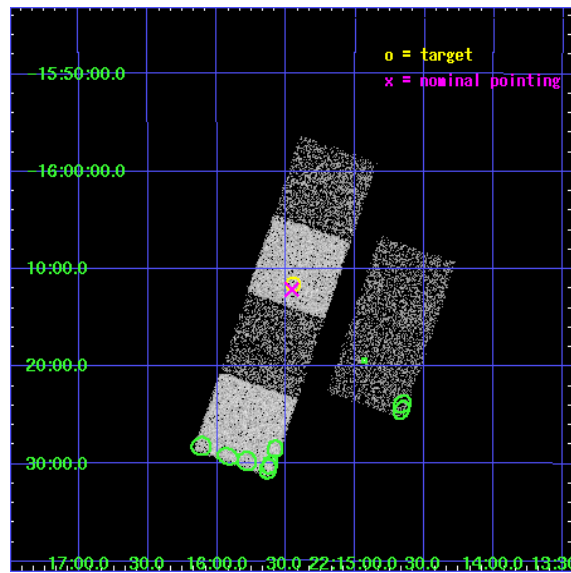
L2 Processing Date : Jan 18 2007

Contents

1	Front	2
2	OBI	3
2.1	OBI	3
2.1.1	Images	3
2.1.2	Bias	3
2.1.3	Parameters	4
2.1.4	Events	4
2.2	Compared Parameters	5
2.3	Aspect	6
2.4	Star Slots	9
2.4.1	Slot 3	9
2.4.2	Slot 4	10
2.4.3	Slot 5	11
2.4.4	Slot 6	12
2.4.5	Slot 7	13
2.5	FID Slots	14
2.5.1	Slot 0	14
2.5.2	Slot 1	15
2.5.3	Slot 2	16
3	Point Sources	17
A	Summary	18
A.1	Status	18
A.2	Comments	18

1 Front

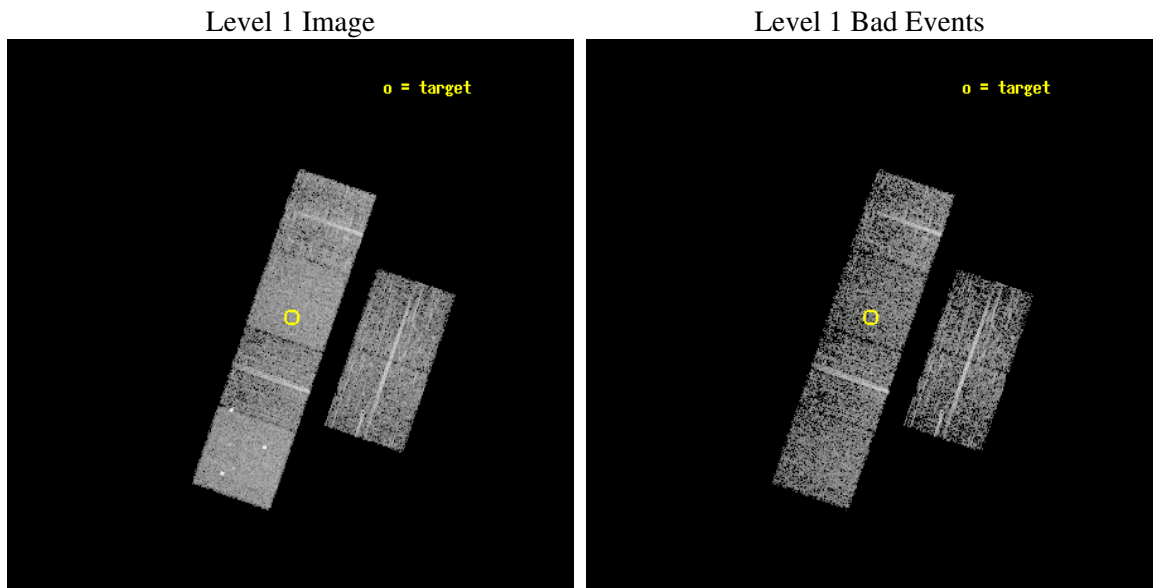
seq_num	700375
obs_id	2185
title	SURVEY OF RADIO QUIET Z>4 QUASARS
observer	Dr. Jill Bechtold
object	BRI 2212-1626
dtcycle	0
cycle	P
ra_targ	333.863333
dec_targ	-16.1925
ra_nom	333.86479159013
dec_nom	-16.202105594532
roll_nom	288.94867992984
revision	2
ontime	3263.9590327889
livedtime	3222.6288181955
ontime2	3263.9590327889
ontime3	3267.2000030428
ontime5	3260.7180127054
ontime6	3267.2000030428
ontime7	3263.9590327889
ontime8	3267.2000030428
l2events	36193



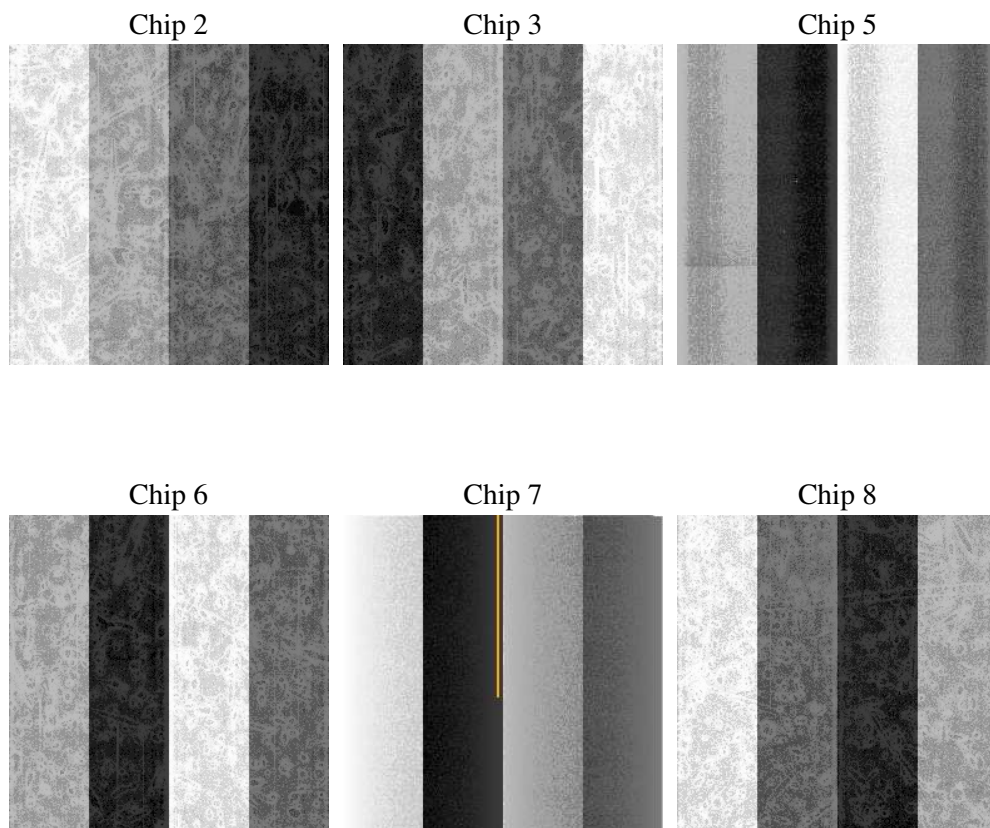
2 OBI

2.1 OBI

2.1.1 Images



2.1.2 Bias



2.1.3 Parameters

obi_num	1
ascdsver	7.6.10
caldbver	3.3.0
date	2007-01-18T04:52:12
revision	2

sched_exp_time	3100.000000
ontime	3263.9590327889
ontime2	3263.9590327889
ontime3	3267.2000030428
ontime5	3260.7180127054
ontime6	3267.2000030428
ontime7	3263.9590327889
ontime8	3267.2000030428
l1events	159758

2.1.4 Events

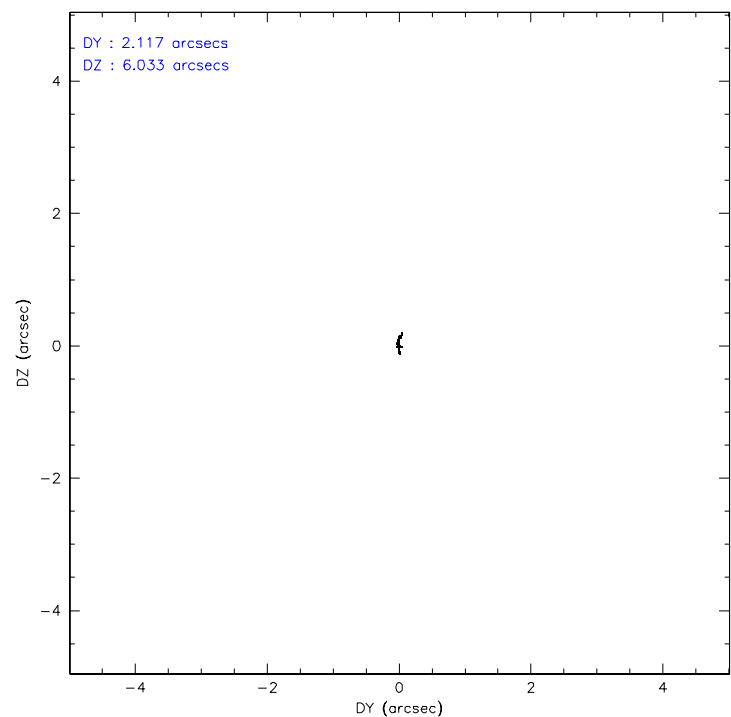
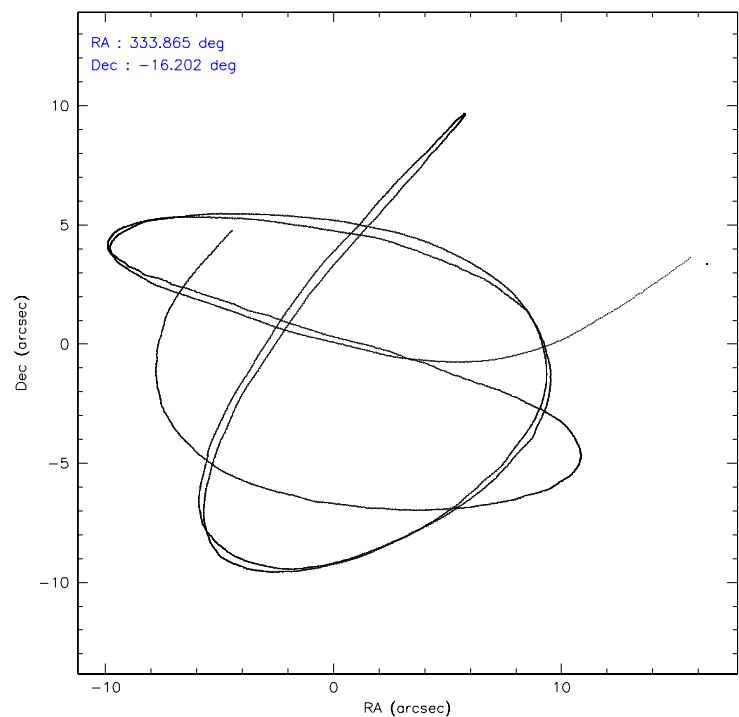
	ccd 2	ccd 3	ccd 5	ccd 6	ccd 7	ccd 8
level 1 events	22418	21800	33519	22937	29800	29284
rejected events	19729	19355	17483	20164	16972	22561
rejected %	88%	88%	52%	87%	56%	77%

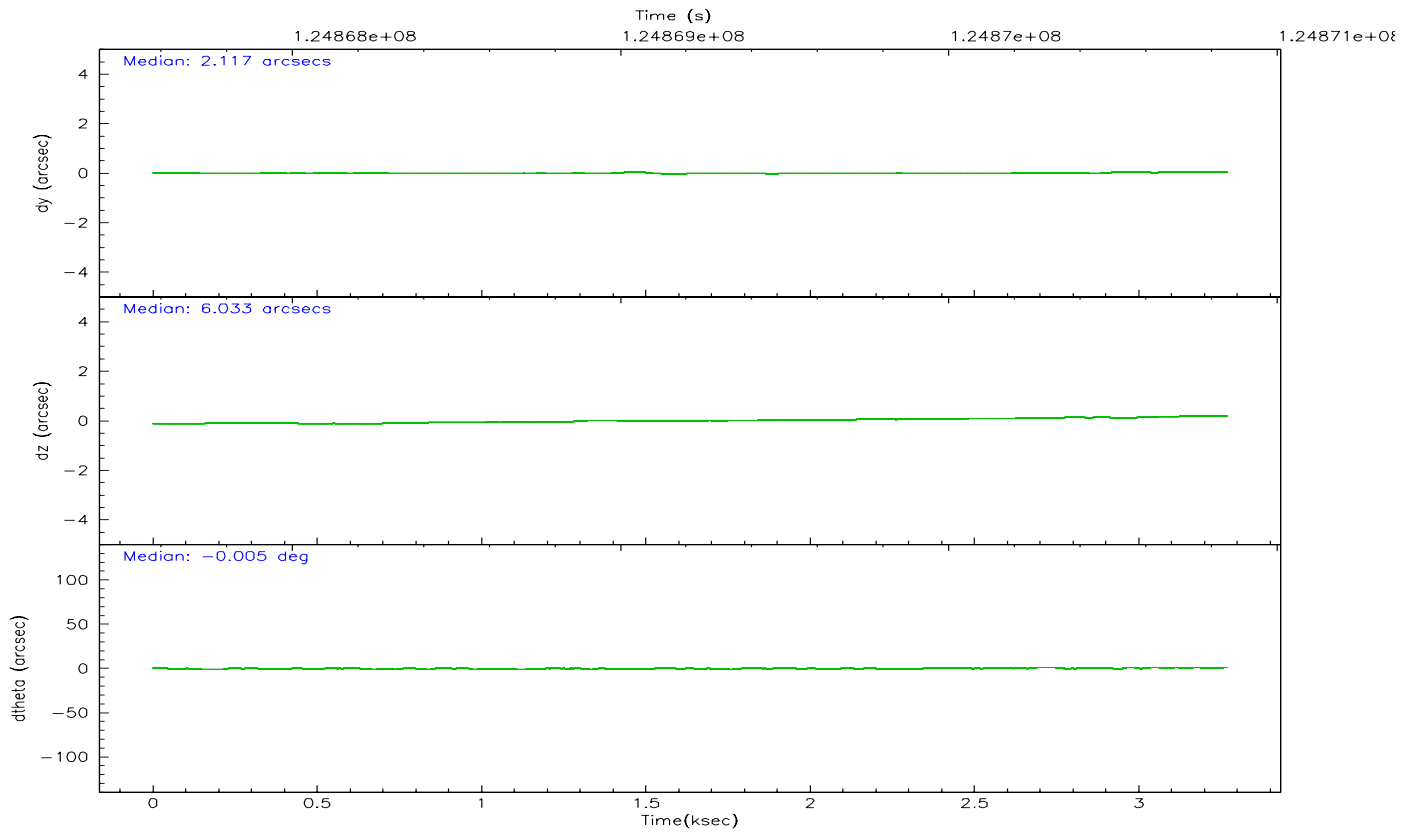
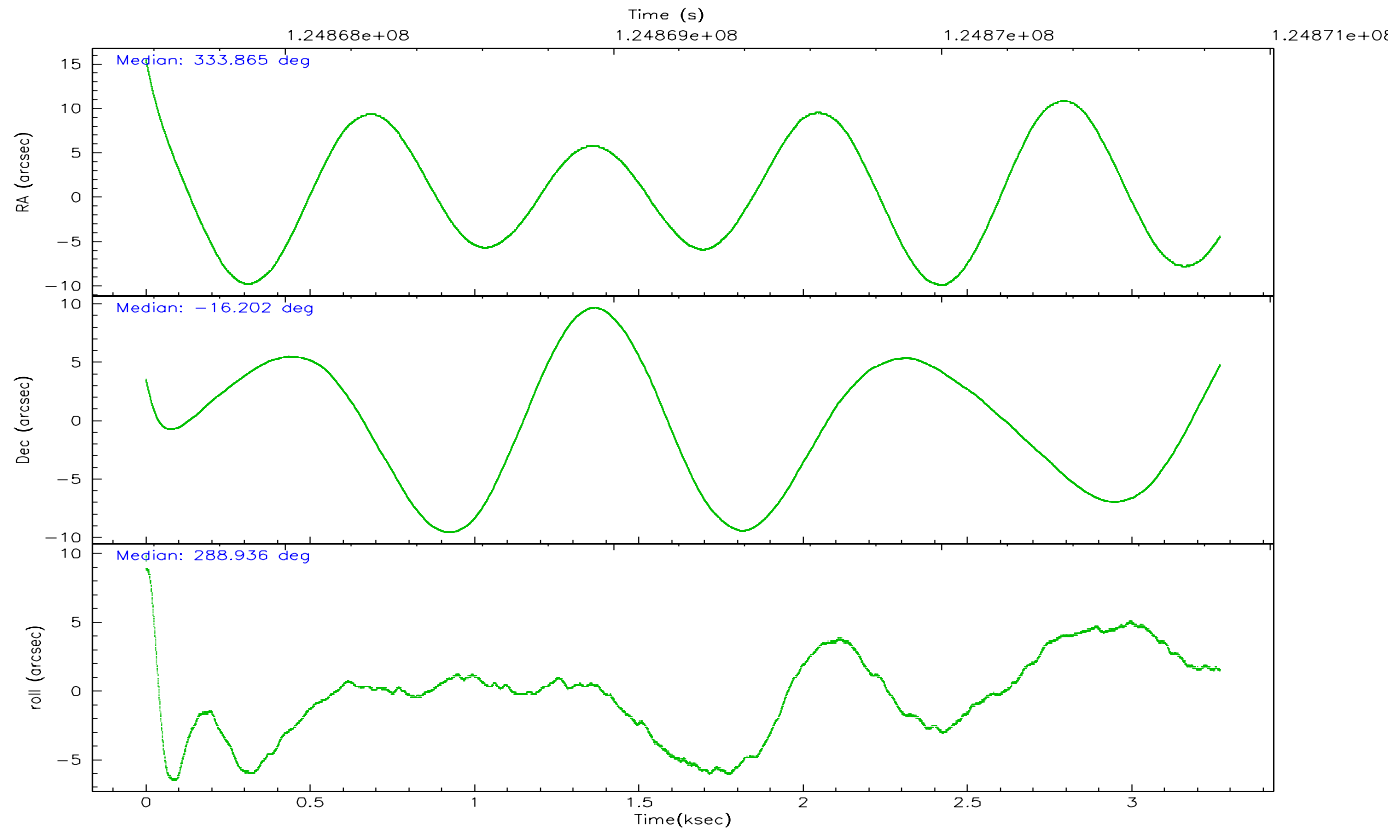
	ccd 2	ccd 3	ccd 5	ccd 6	ccd 7	ccd 8
grade 0 events	1192	1086	2509	1191	1293	2206
	5%	4%	7%	5%	4%	7%
grade 1 events	22	10	84	10	36	22
	0%	0%	0%	0%	0%	0%
grade 2 events	589	481	4532	585	2552	1287
	2%	2%	13%	2%	8%	4%
grade 3 events	232	249	660	260	1127	918
	1%	1%	1%	1%	3%	3%
grade 4 events	229	250	690	284	1175	816
	1%	1%	2%	1%	3%	2%
grade 5 events	714	821	2361	957	2677	1233
	3%	3%	7%	4%	8%	4%
grade 6 events	483	409	7929	501	6869	1598
	2%	1%	23%	2%	23%	5%
grade 7 events	18957	18494	14754	19149	14071	21204
	84%	84%	44%	83%	47%	72%

2.2 Compared Parameters

Parameter	Planned	Actual	Parameter	Planned	Actual
Instrument	ACIS	ACIS	Obspar format version number	6	6
Detector	ACIS-235678	ACIS-235678	Obspar file type	PREDICTED	ACTUAL
Grating	NONE	NONE	Obspar update status	NONE	UPDATED
Data mode	FAINT	FAINT	Number of optional ACIS chips dropped	0	0
Observation mode	POINTING	POINTING	On-chip summing requested	N	N
Pointing RA	333.843249	333.8647915901332	Subarray requested	NONE	NONE
Pointing Dec	-16.184447	-16.20210559453186	Alternating exposures requested	N	N
Pointing Roll	288.785998	288.9486799298376	Primary exposure time	0.000000	3.2
SIM focus pos (mm)	-0.684267	-0.6828225247311905			
SIM defocus (mm)	0	0.001444936568705701			
SIM translation stage pos (mm)	-190.132523	-190.1425803651734			
SIM translation stage offset (mm)	0	0.01005778216563158			
Observation start time	124867746.184000	124866659.11965			
Observation start date	2001-12-16T05:28:02	2001-12-16T05:10:59			
Observation end time	124870846.184000	124871560.15735			
Observation end date	2001-12-16T06:19:42	2001-12-16T06:32:40			
Read mode	TIMED	TIMED			

2.3 Aspect



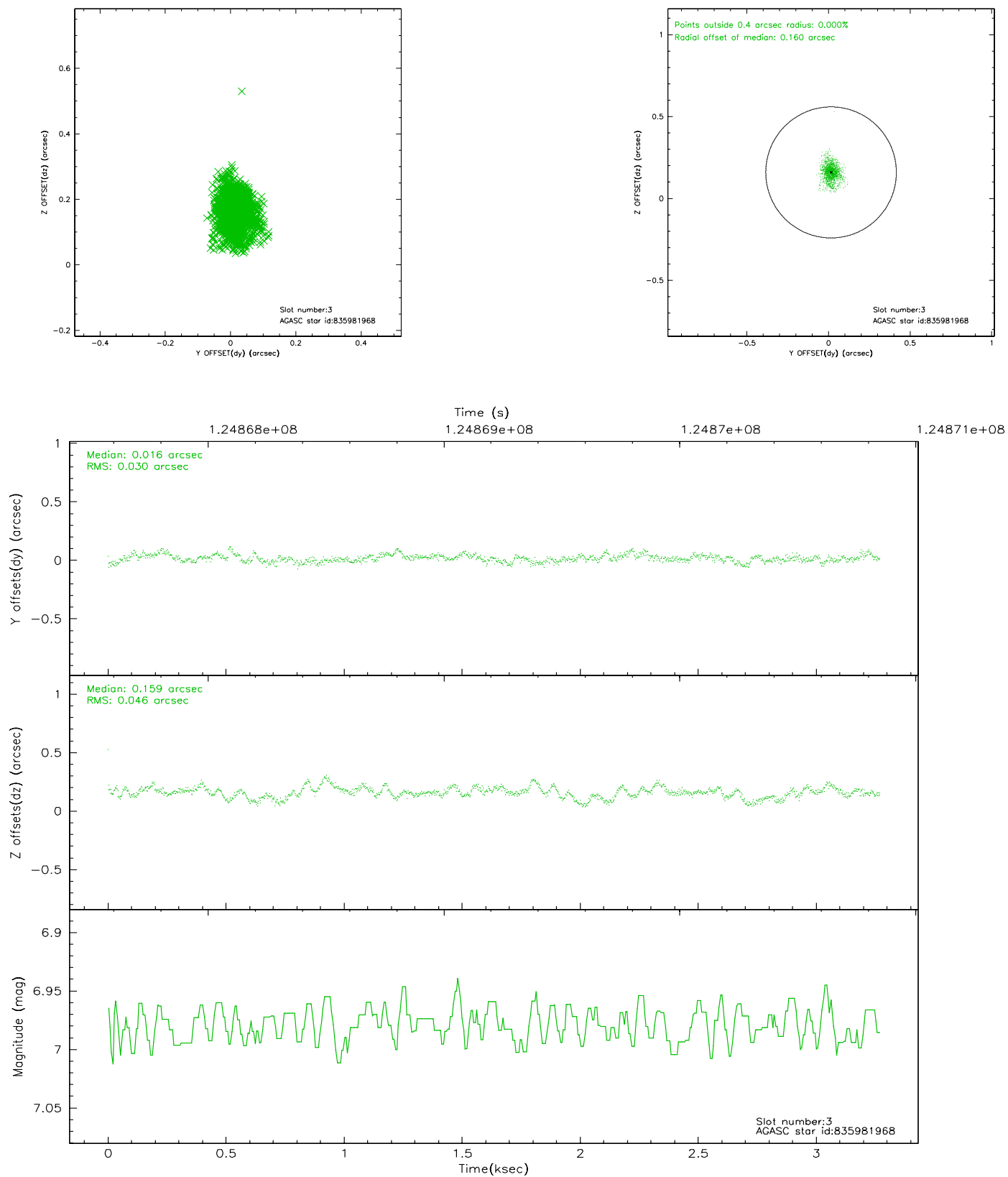


Slot Statistics

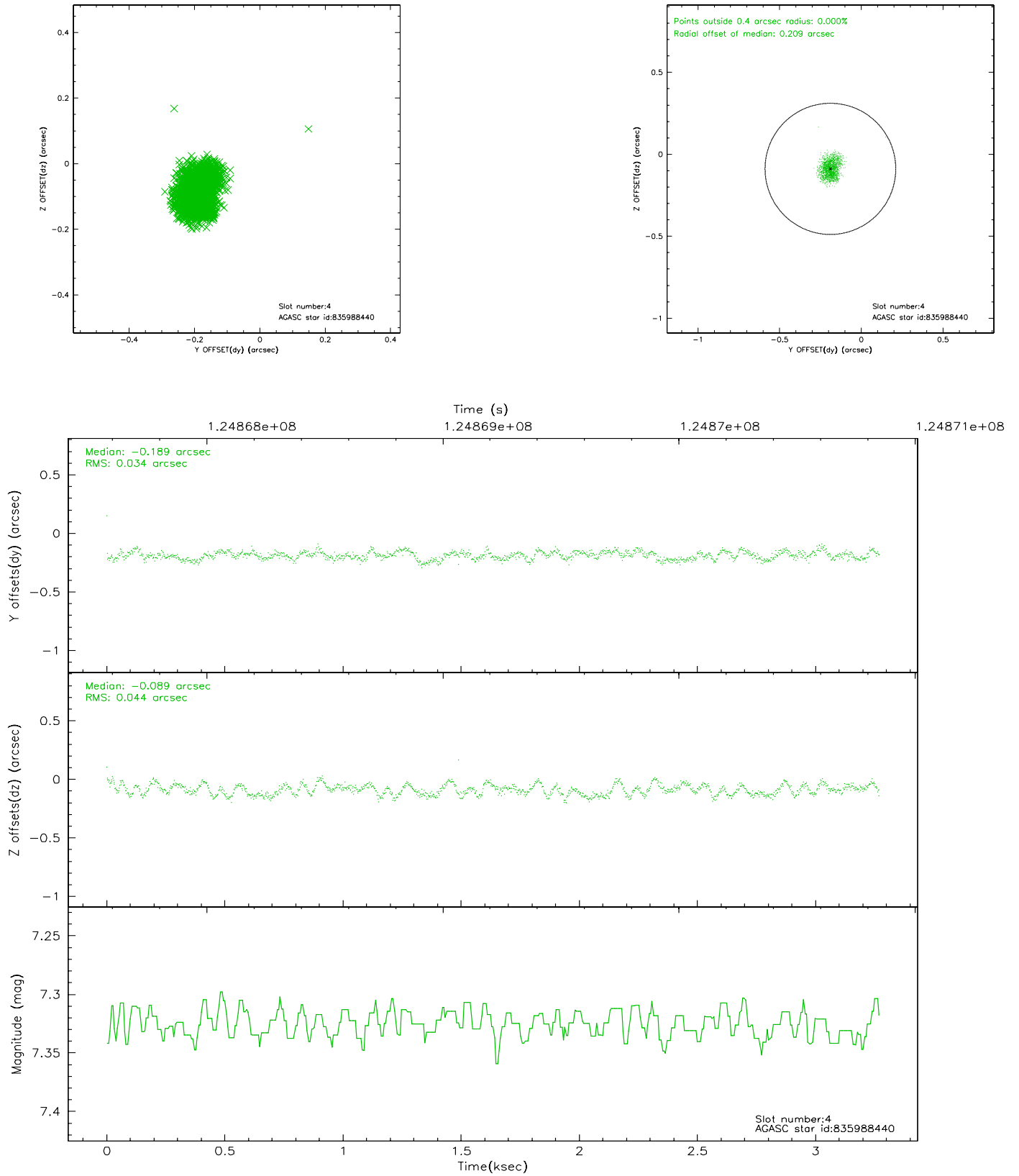
slot	status	id	mag	n_pts	med_dy	med_dz	dr1	dr2	ra	dec	mean_y	mean_z
0	FID	ACIS-S-2	7.11	795	-0.038	0.025	0.006	0.010	0.000000	0.000000	-754.73	-1727.12
1	FID	ACIS-S-4	7.21	794	-0.049	0.011	0.005	0.009	0.000000	0.000000	2157.61	179.40
2	FID	ACIS-S-5	7.24	797	0.056	-0.028	0.006	0.010	0.000000	0.000000	-1805.02	175.16
3	GUIDE	835981968	6.98	1591	0.016	0.159	0.055	0.098	334.363293	-15.979762	-115.85	1941.05
4	GUIDE	835988440	7.33	1592	-0.189	-0.089	0.060	0.090	333.684848	-15.701568	-1822.17	41.15
5	GUIDE	835989144	9.36	1590	0.032	0.113	0.096	0.150	334.448722	-15.932657	-181.46	2275.76
6	GUIDE	835847056	9.28	1593	-0.016	-0.110	0.097	0.155	333.278171	-16.621840	866.44	-2351.47
7	GUIDE	835979456	9.67	1592	0.155	-0.066	0.112	0.179	333.600986	-16.609366	1181.00	-1284.87

2.4 Star Slots

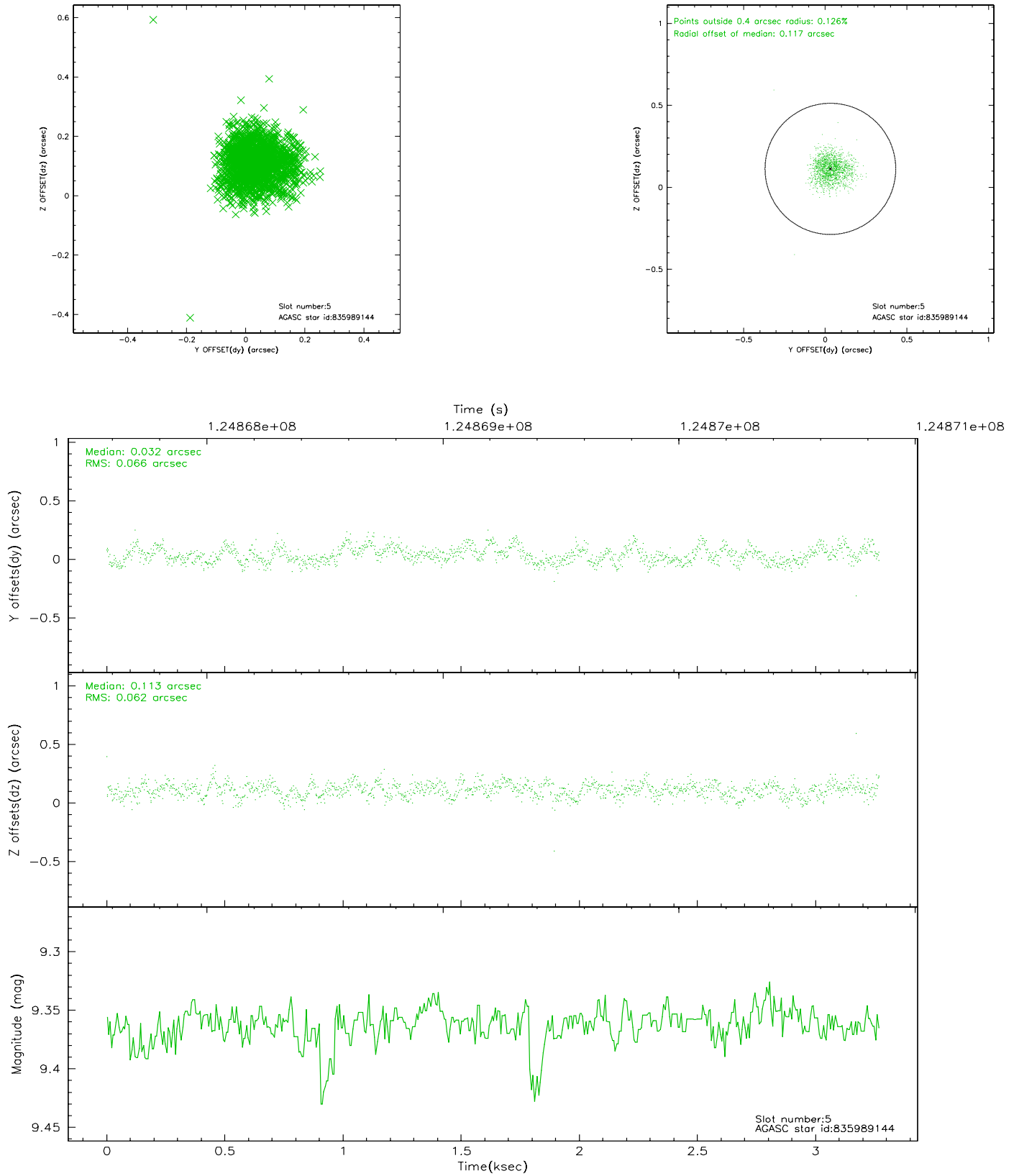
2.4.1 Slot 3



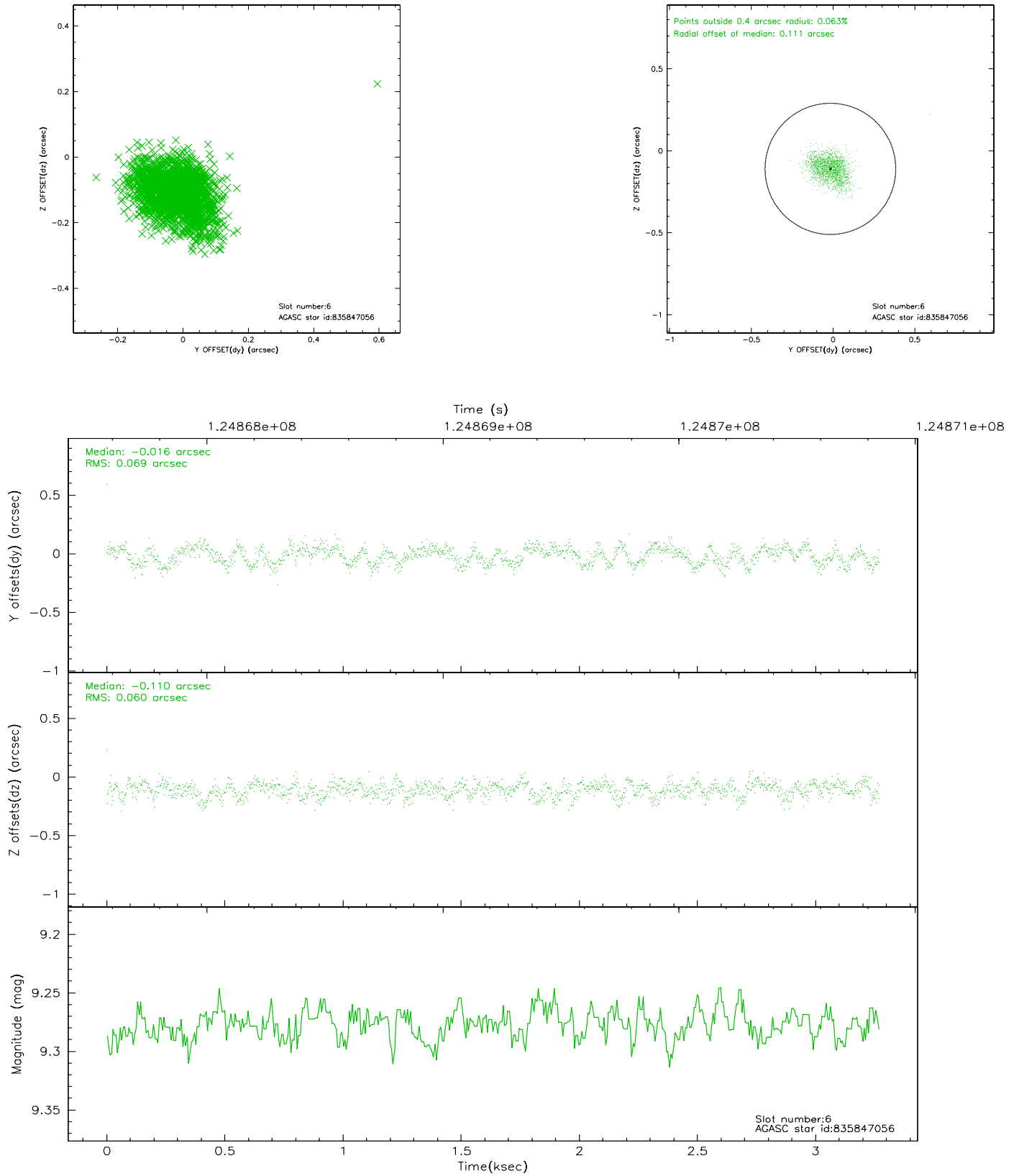
2.4.2 Slot 4



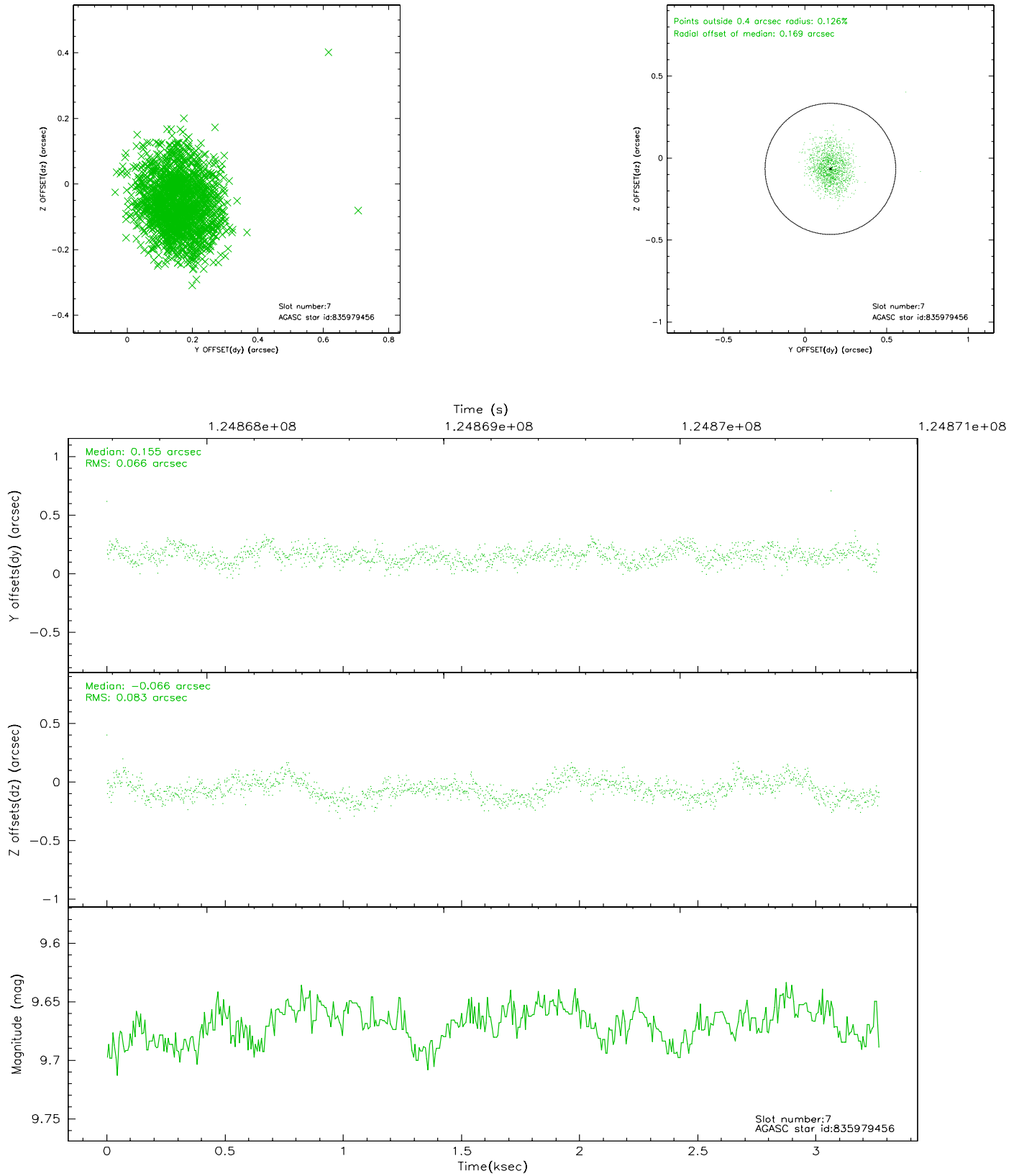
2.4.3 Slot 5



2.4.4 Slot 6

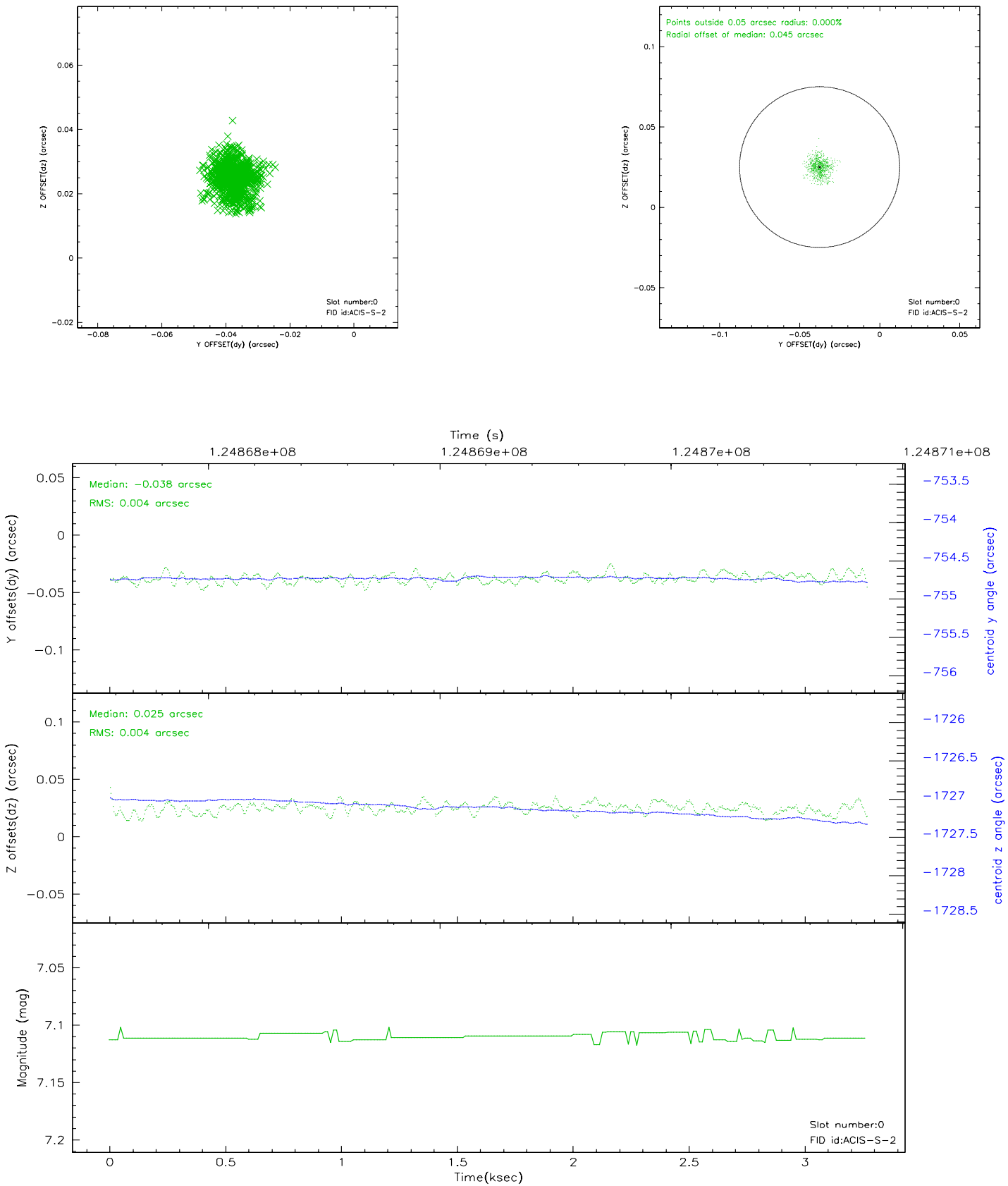


2.4.5 Slot 7

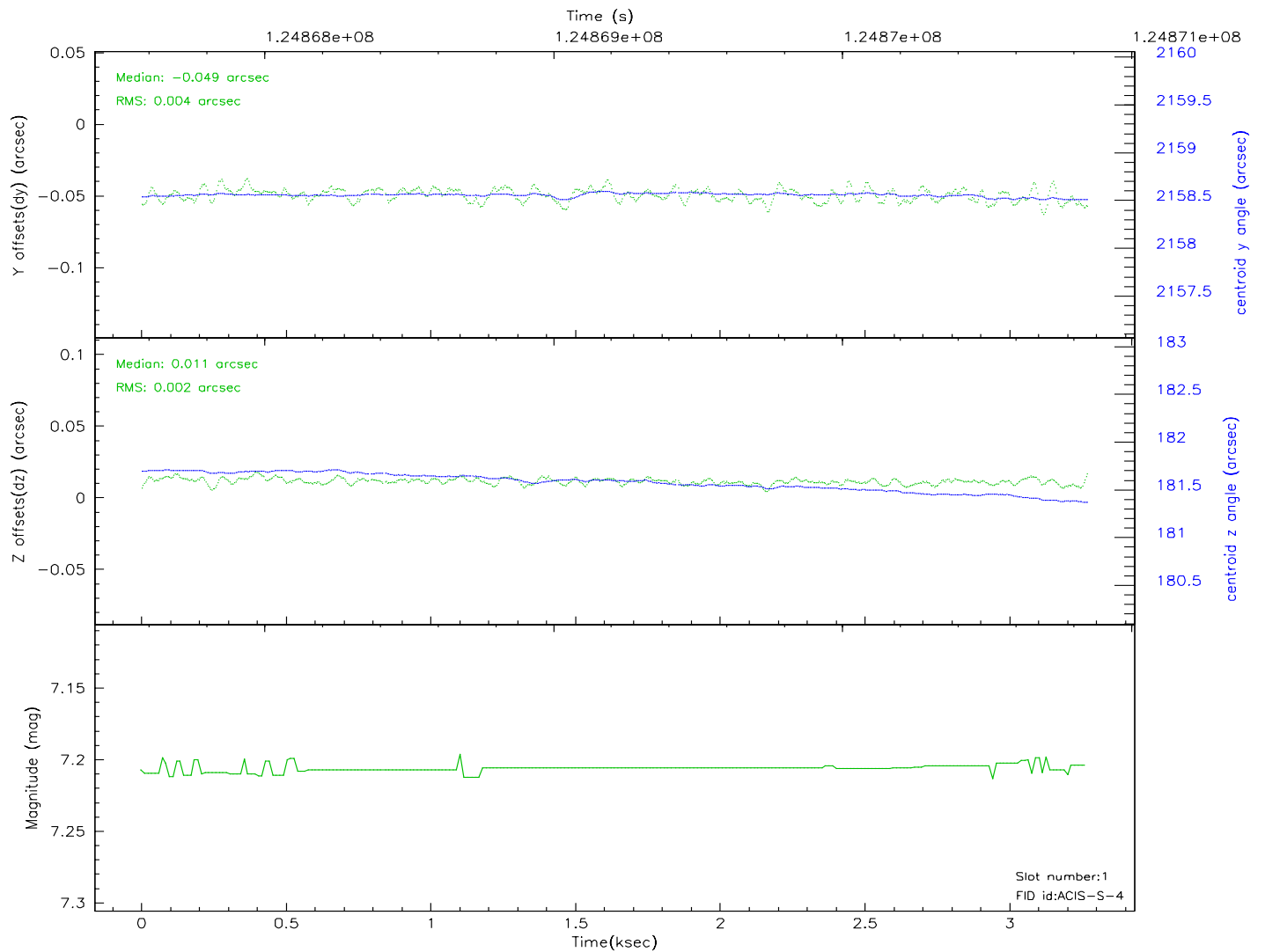
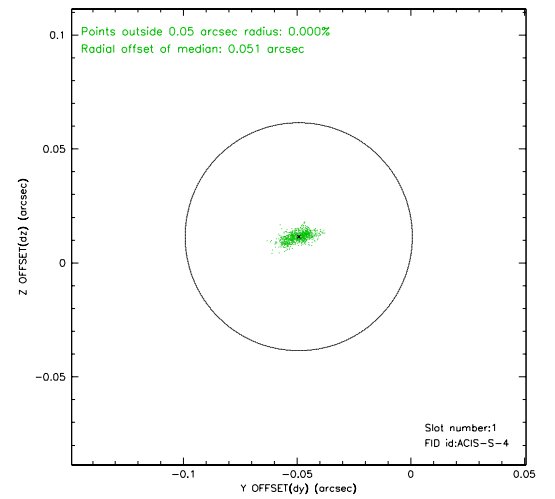
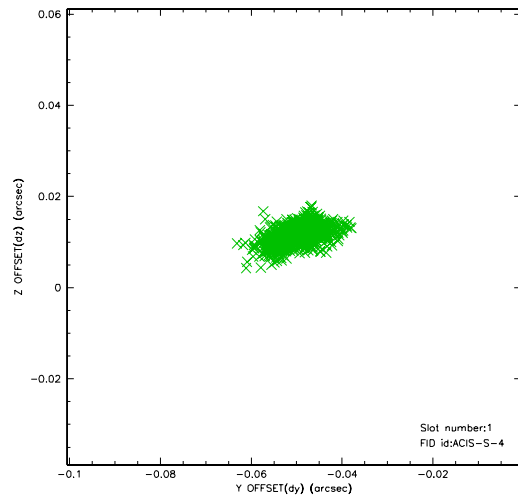


2.5 FID Slots

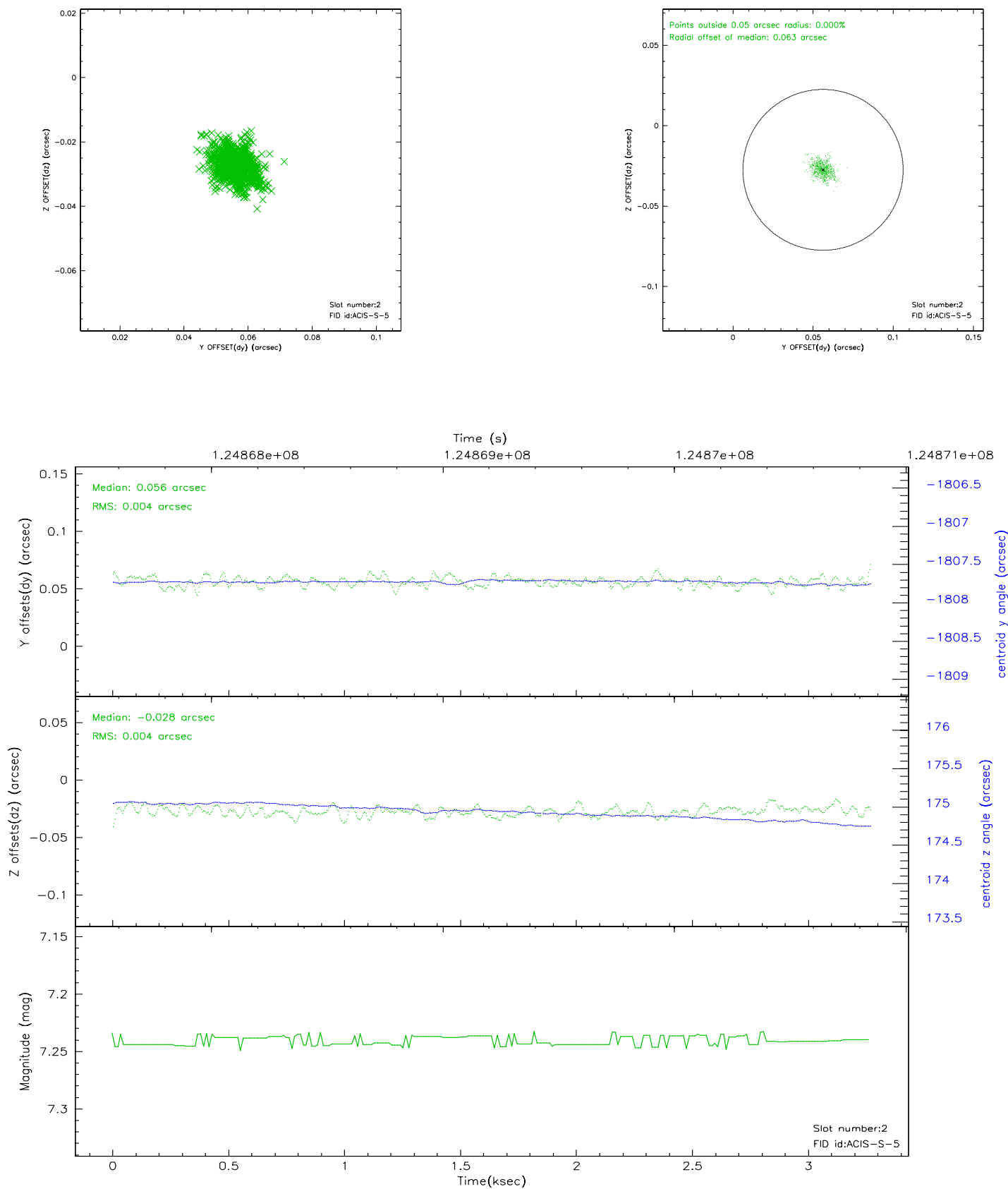
2.5.1 Slot 0



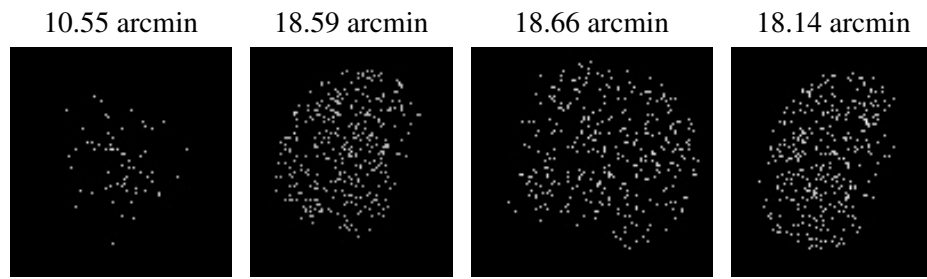
2.5.2 Slot 1



2.5.3 Slot 2



3 Point Sources



A Summary

A.1 Status

V&V Scientist	Beth Sundheim
V&V Date (YYYY-MM-DD)	2007.01.18
V&V Edition	1
V&V Disposition and Status	OK
V&V Charge Time	3.263

A.2 Comments