

# V&V Reference Report

## L2 ASCDS Version : 8.4.5

Observation 2065 - L2 Version 3  
Chandra X-Ray Center

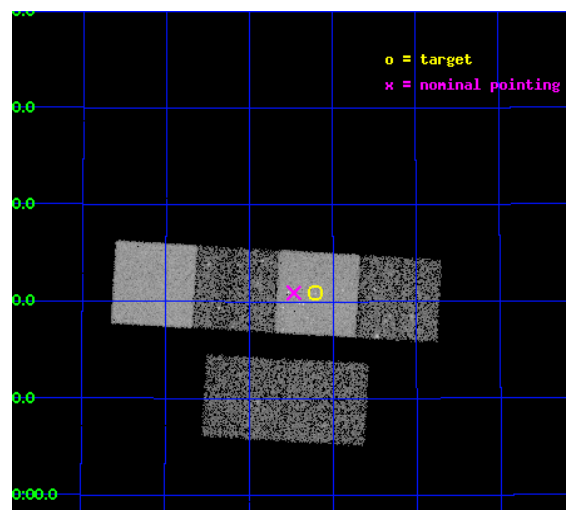
L2 Processing Date : Sep 2 2012

## Contents

<b>1</b>	<b>Front</b>	<b>2</b>
<b>2</b>	<b>OBI</b>	<b>3</b>
2.1	OBI . . . . .	3
2.1.1	Images . . . . .	3
2.1.2	Bias . . . . .	3
2.1.3	Parameters . . . . .	4
2.1.4	Events . . . . .	4
2.2	Compared Parameters . . . . .	5
2.3	Aspect . . . . .	6
2.4	Star Slots . . . . .	9
2.4.1	Slot 3 . . . . .	9
2.4.2	Slot 4 . . . . .	10
2.4.3	Slot 5 . . . . .	11
2.4.4	Slot 6 . . . . .	12
2.4.5	Slot 7 . . . . .	13
2.5	FID Slots . . . . .	14
2.5.1	Slot 0 . . . . .	14
2.5.2	Slot 1 . . . . .	15
2.5.3	Slot 2 . . . . .	16
<b>A</b>	<b>Summary</b>	<b>17</b>
A.1	Status . . . . .	17
A.2	Comments . . . . .	17

# 1 Front

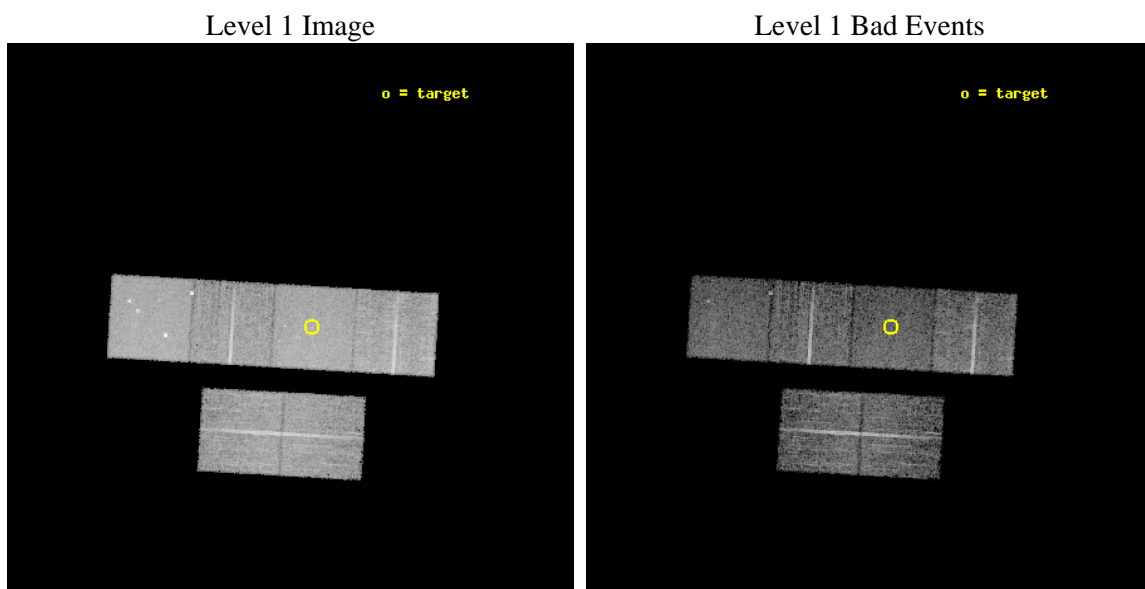
seq_num	600199	Sequence number
obs_id	2065	Observation id
title	THE X-RAY POINT SOURCE POPULATION IN SPIRAL GALAXIES	Proposal titl
observer	Dr Andrea Prestwich	Principal investigator
object	NGC 5457	Source name
dtcycle	0	&#160
cycle	P	events from which exps? Prim/Second/Both
ra_targ	210.802083	Observer's specified target RA [deg]
dec_targ	54.348611	Observer's specified target Dec [deg]
ra_nom	210.86665051187	Nominal RA [deg]
dec_nom	54.348892288691	Nominal Dec [deg]
roll_nom	3.2901695846181	Nominal Roll [deg]
revision	3	Processing version of data
ontime	9753.5809539258	Sum of GTIs [s]
livetime	9630.0752389859	Livetime [s]
ontime2	9753.6000090688	Sum of GTIs [s]
ontime3	9753.4578339309	Sum of GTIs [s]
ontime5	9753.539943859	Sum of GTIs [s]
ontime6	9750.2579237074	Sum of GTIs [s]
ontime7	9753.5809539258	Sum of GTIs [s]
ontime8	9746.9348535389	Sum of GTIs [s]
l2events	89726	Number of level 2 events



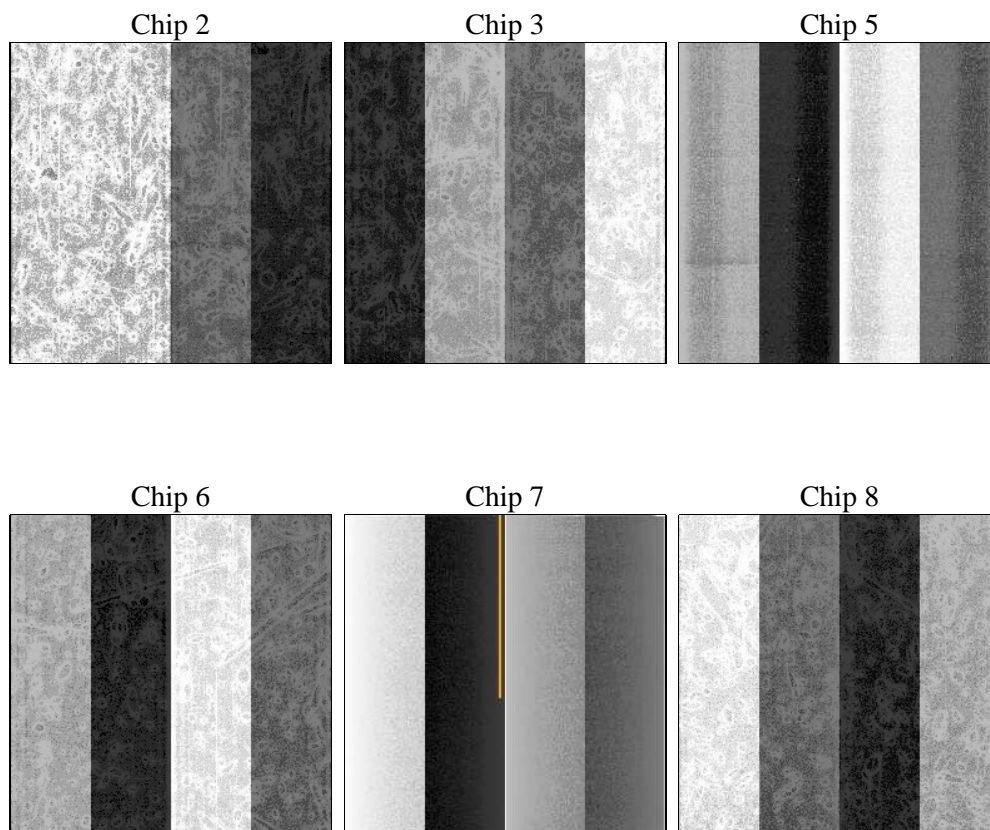
## 2 OBI

### 2.1 OBI

#### 2.1.1 Images



#### 2.1.2 Bias



### 2.1.3 Parameters

obi_num	0	Obi number	sched_exp_time	10000.000000	[s] Scheduled observation exposure time
ascdsver	8.4.5	Processing system revision	ontime	9753.5809539258	Sum of GTIs [s]
caldsver	4.5.1.1	&#160	ontime2	9753.6000090688	Sum of GTIs [s]
date	2012-09-03T00:30:01	Date and time of file creation	ontime3	9753.4578339309	Sum of GTIs [s]
revision	3	Processing version of data	ontime5	9753.539943859	Sum of GTIs [s]
			ontime6	9750.2579237074	Sum of GTIs [s]
			ontime7	9753.5809539258	Sum of GTIs [s]
			ontime8	9746.9348535389	Sum of GTIs [s]
			l1events	396735	Number of level 1 events

### 2.1.4 Events

	ccd 2	ccd 3	ccd 5	ccd 6	ccd 7	ccd 8		ccd 2	ccd 3	ccd 5	ccd 6	ccd 7	ccd 8
level 1 events	58345	54588	80935	56589	72921	73357	grade 0 events	2991	2939	5344	3125	3922	5217
rejected events	51501	47951	42747	49455	40698	57946		5%	5%	6%	5%	5%	7%
rejected %	88%	87%	52%	87%	55%	78%	grade 1 events	25	25	194	28	63	50
								0%	0%	0%	0%	0%	0%
							grade 2 events	1460	1316	10788	1436	6446	3204
								2%	2%	13%	2%	8%	4%
							grade 3 events	610	586	1850	664	2891	1662
								1%	1%	2%	1%	3%	2%
							grade 4 events	630	634	1647	633	3031	1585
								1%	1%	2%	1%	4%	2%
							grade 5 events	1853	2045	6044	2308	6679	2830
								3%	3%	7%	4%	9%	3%
							grade 6 events	1156	1166	18585	1277	15943	3754
								1%	2%	22%	2%	21%	5%
							grade 7 events	49620	45877	36483	47118	33946	55055
								85%	84%	45%	83%	46%	75%

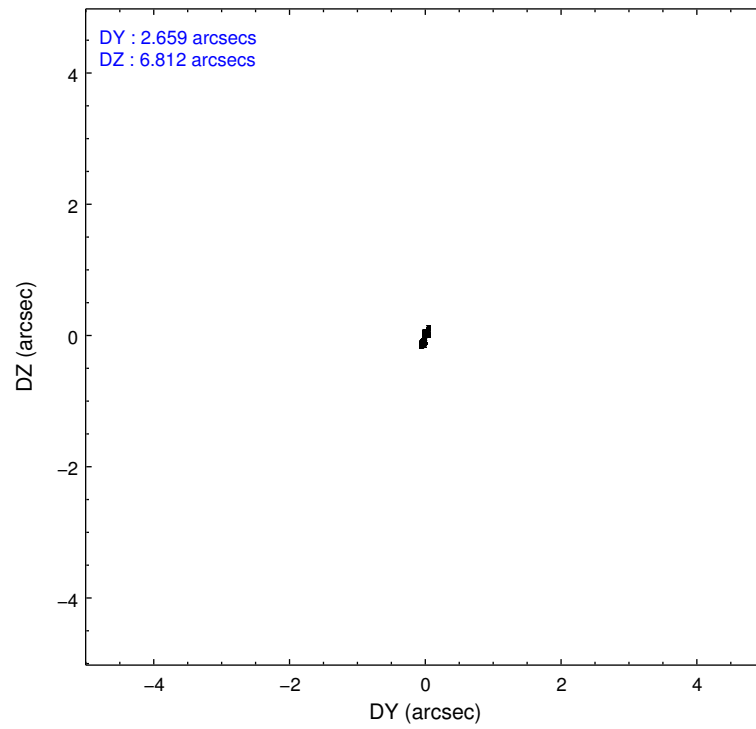
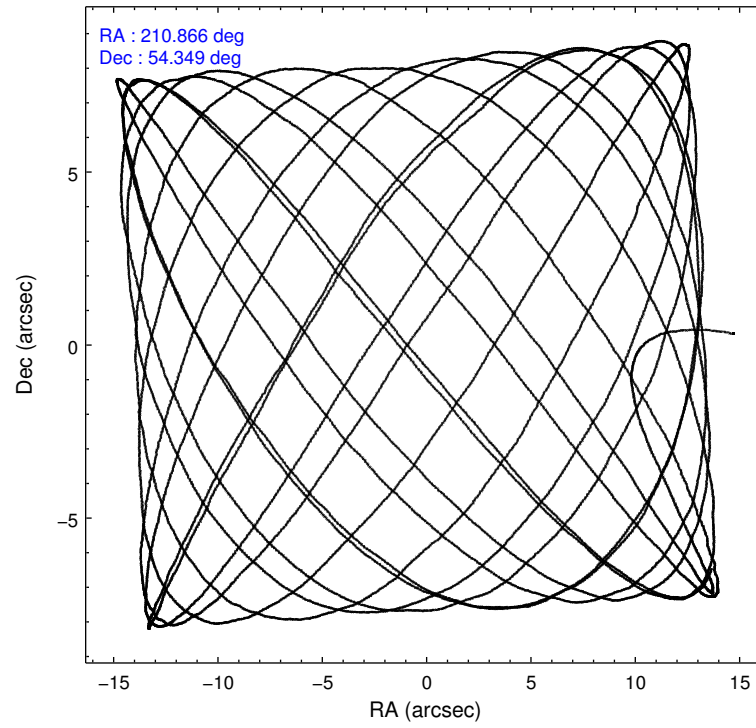


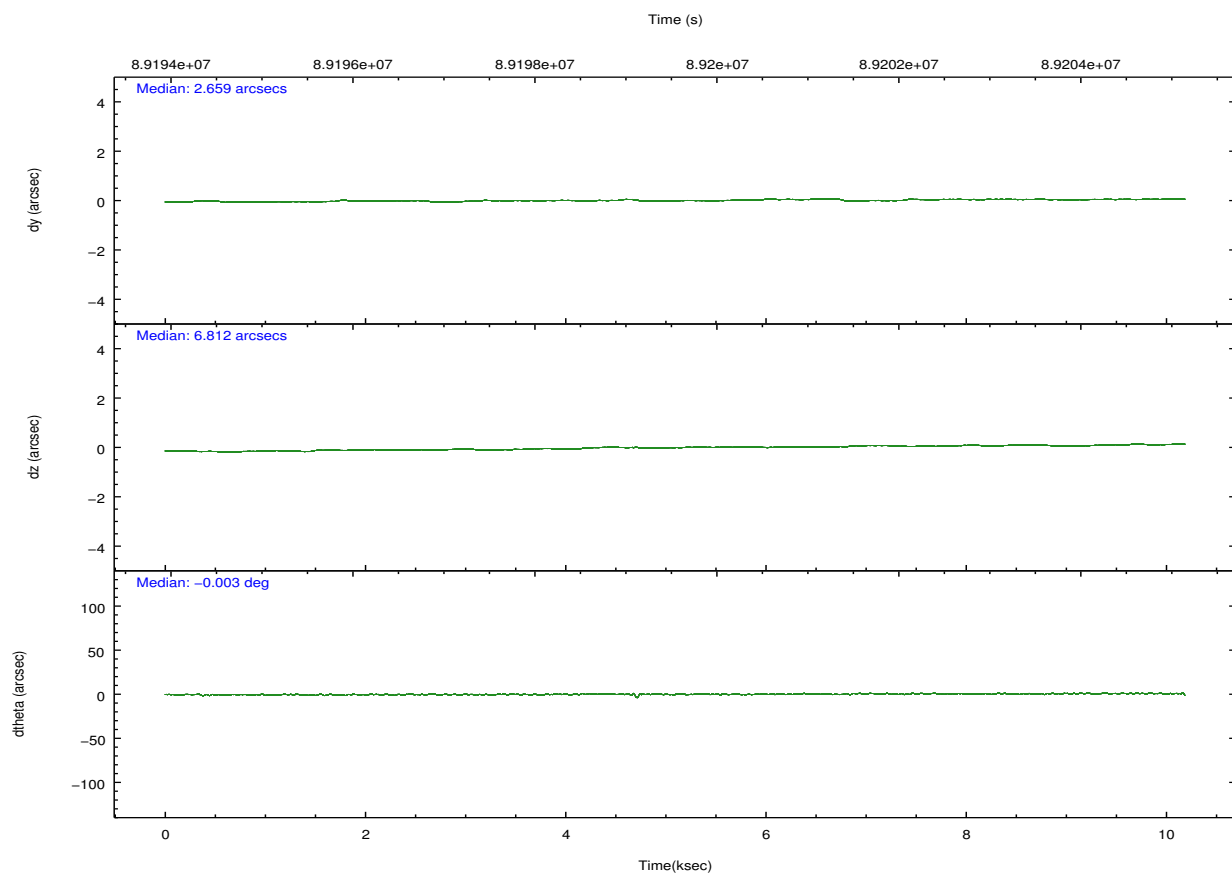
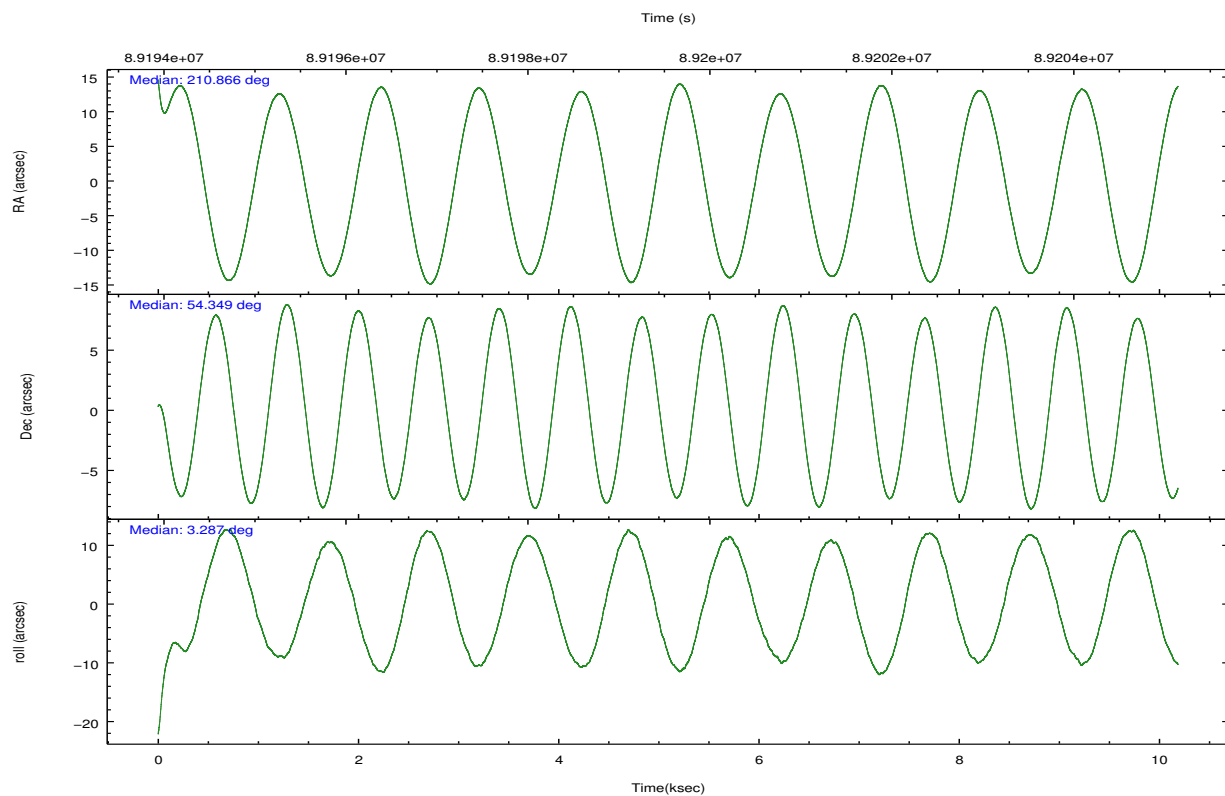
## 2.2 Compared Parameters

Parameter	Planned	Actual
Instrument	ACIS	ACIS
Detector	ACIS-235678	ACIS-235678
Grating	NONE	NONE
Data mode	FAINT	FAINT
Observation mode	POINTING	POINTING
[deg] Pointing RA	210.827553	210.8666505118681
[deg] Pointing Dec	54.333752	54.34889228869093
[deg] Pointing Roll	3.165322	3.290169584618124
[mm] SIM focus pos	-0.684267	-0.6828225247311905
[mm] SIM defocus	0	0.001444936568705701
[mm] SIM translation stage pos	-190.132523	-190.1400660498719
[mm] SIM translation stage offset	0	0.00754346686406393
[s] Observation start time (MET)	89194632.184000	89193935.841553
Observation start date	2000-10-29T08:16:08	2000-10-29T08:05:35
[s] Observation end time (MET)	89204632.184000	89205079.129474
Observation end date	2000-10-29T11:02:48	2000-10-29T11:11:19
Read mode	TIMED	TIMED

Parameter	Planned	Actual
Obspar format version number	7	7
Obspar file type	PREDICTED	ACTUAL
Obspar update status	NONE	UPDATED
Number of optional ACIS chips dropped	0	0
On-chip summing requested	N	N
Subarray requested	NONE	NONE
Alternating exposures requested	N	N
[s] Primary exposure time	0.000000	3.2

## 2.3 Aspect



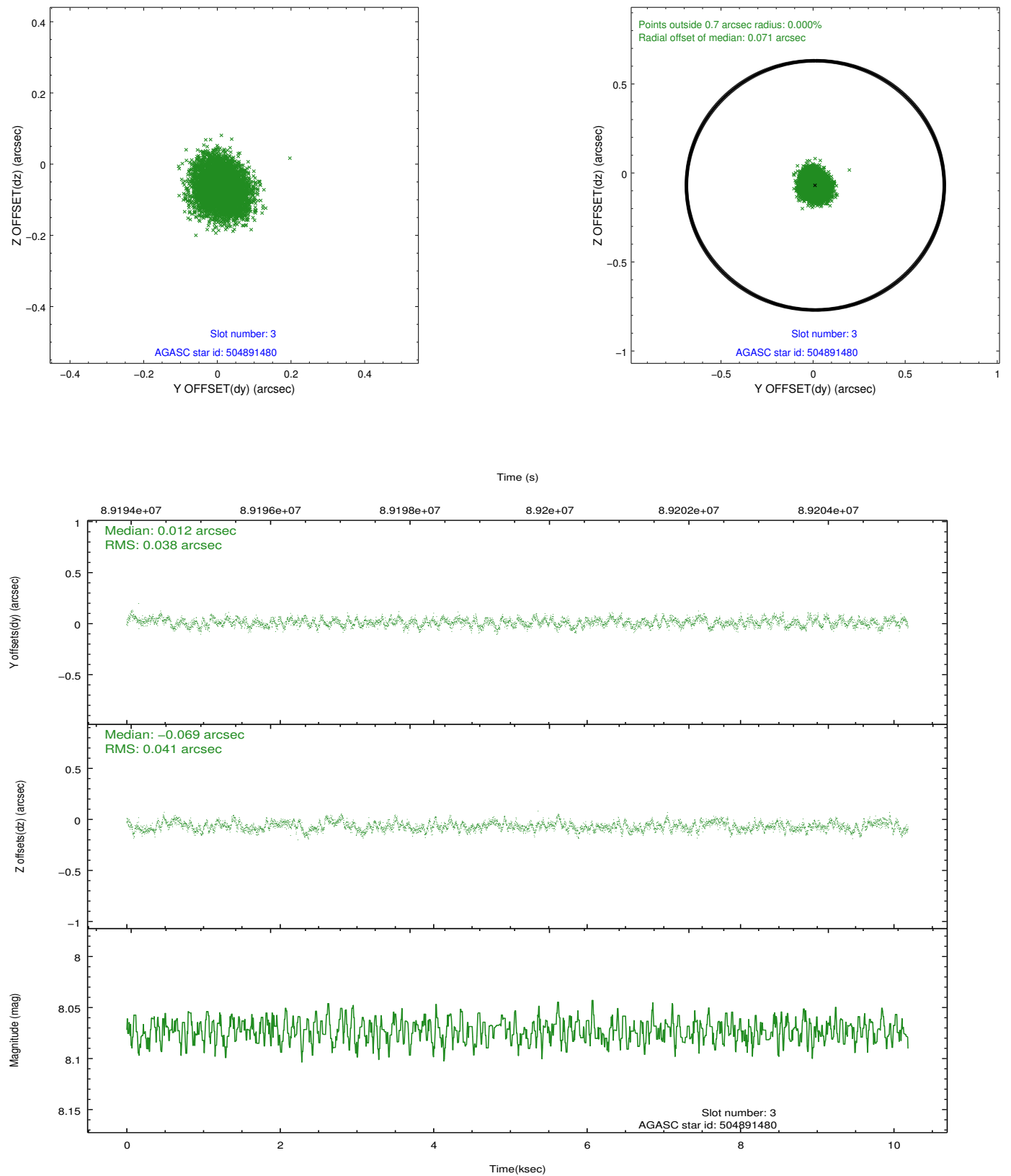


### Slot Statistics

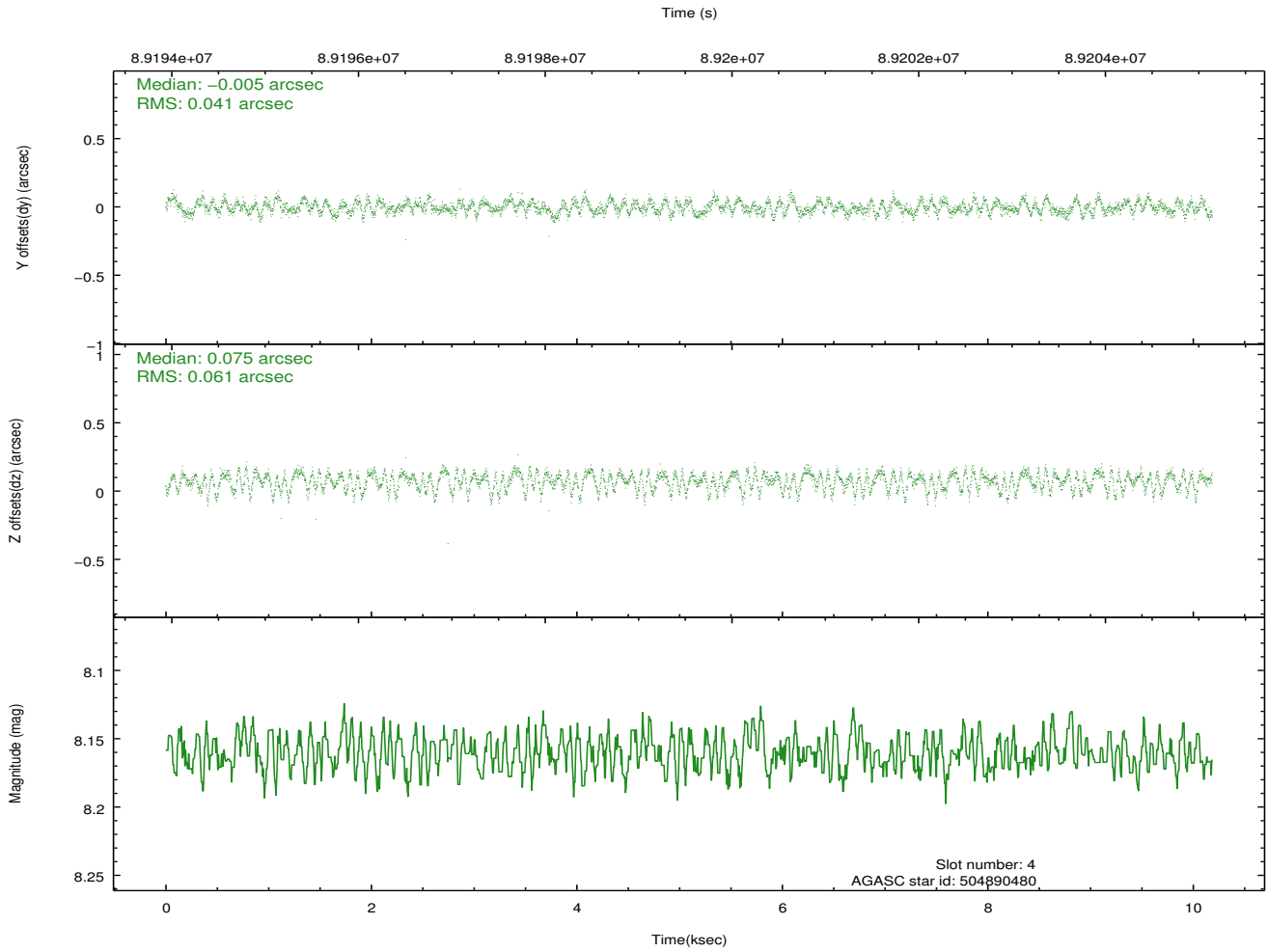
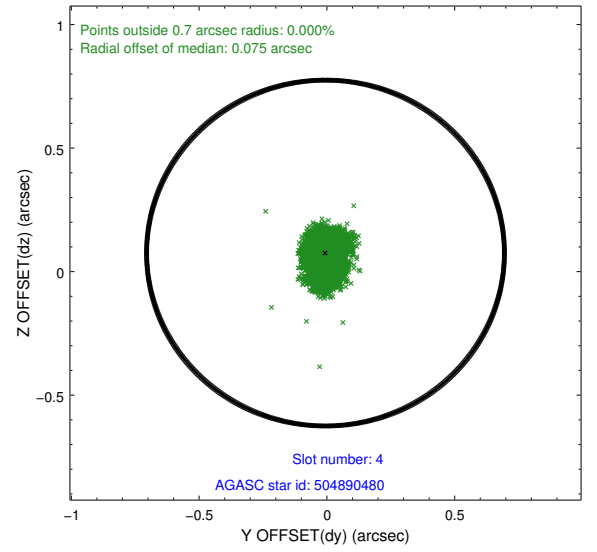
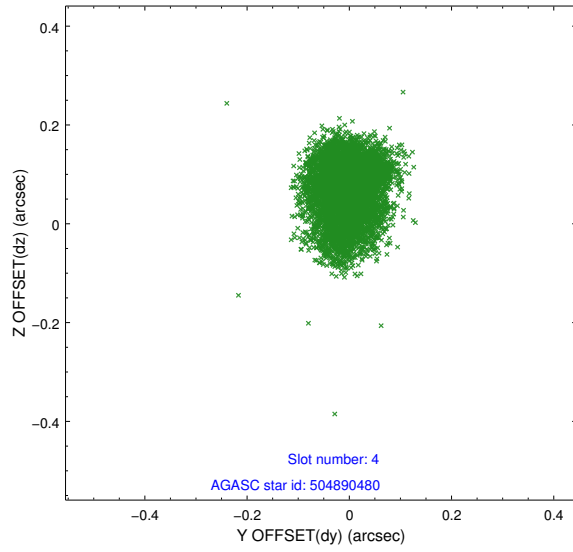
slot	status	id	mag	n_pts	med_dy	med_dz	dr1	dr2	ra	dec	mean_y	mean_z
0	FID	ACIS-S-3	7.36	2484	-0.079	-0.075	0.007	0.012	0.000000	0.000000	57.79	-1857.09
1	FID	ACIS-S-4	7.20	2485	-0.013	0.077	0.006	0.011	0.000000	0.000000	2158.06	179.99
2	FID	ACIS-S-5	7.23	2485	0.064	0.008	0.007	0.011	0.000000	0.000000	-1807.40	174.30
3	GUIDE	504891480	8.07	4970	0.012	-0.069	0.060	0.095	210.708012	54.666096	-181.66	1208.93
4	GUIDE	504890480	8.16	4969	-0.005	0.075	0.078	0.125	210.132463	53.768436	-1587.94	-1942.56
5	GUIDE	504894856	8.98	4968	0.141	0.057	0.062	0.100	209.819510	54.132689	-2161.38	-590.20
6	GUIDE	504890776	9.28	4969	-0.116	-0.071	0.119	0.176	211.095934	54.816966	652.17	1707.53
7	GUIDE	504894408	9.28	4968	-0.029	0.020	0.104	0.161	211.942794	54.047749	2298.67	-1138.71

## 2.4 Star Slots

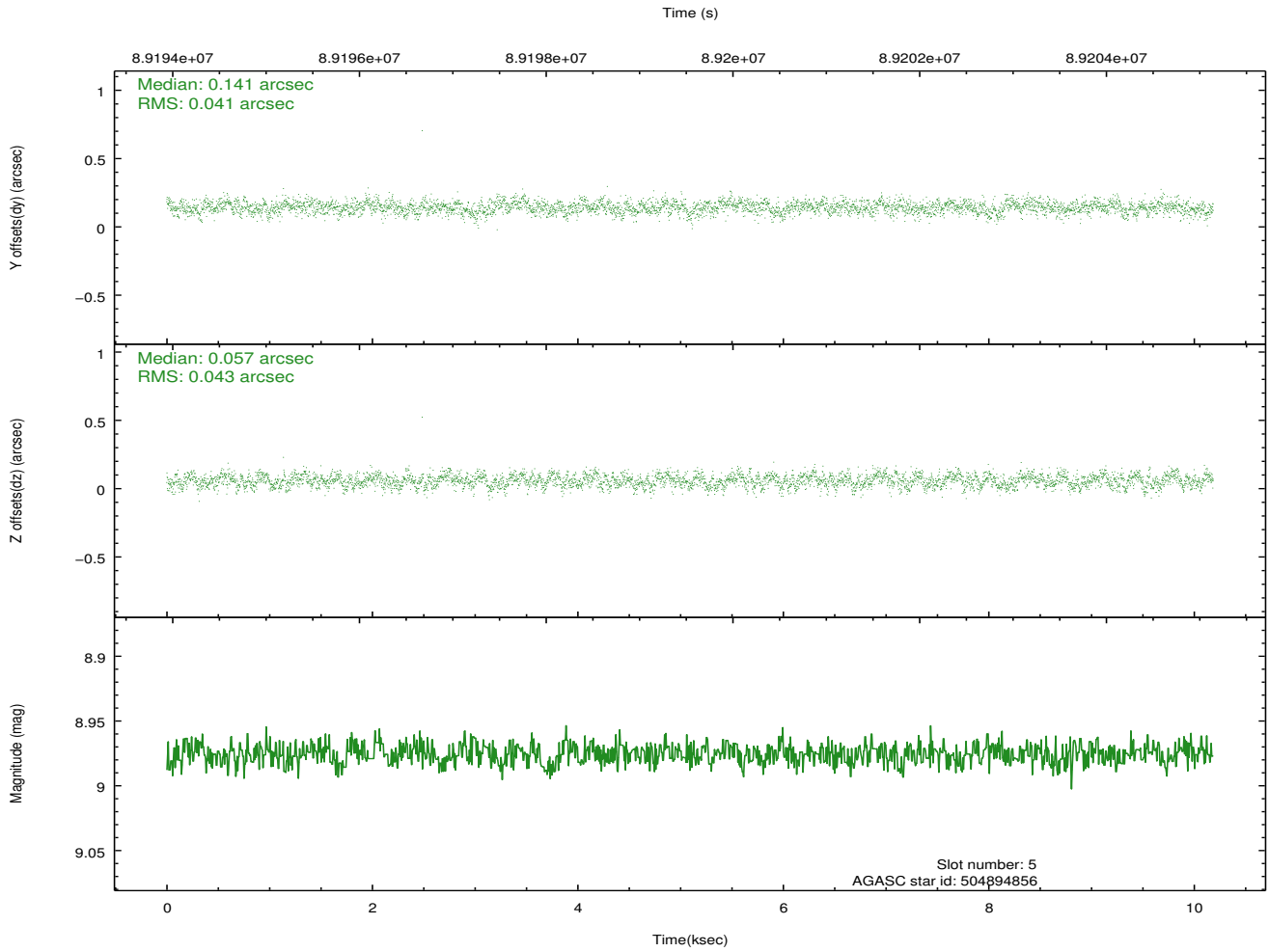
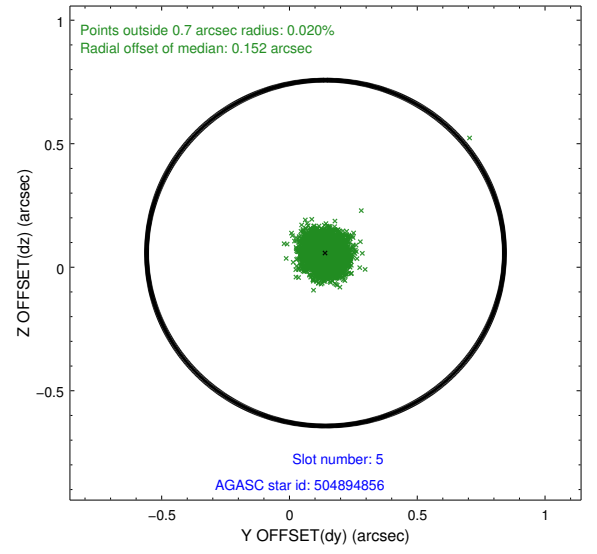
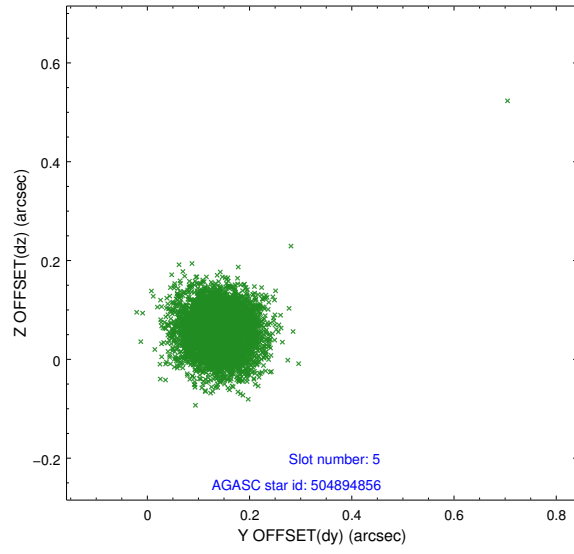
### 2.4.1 Slot 3



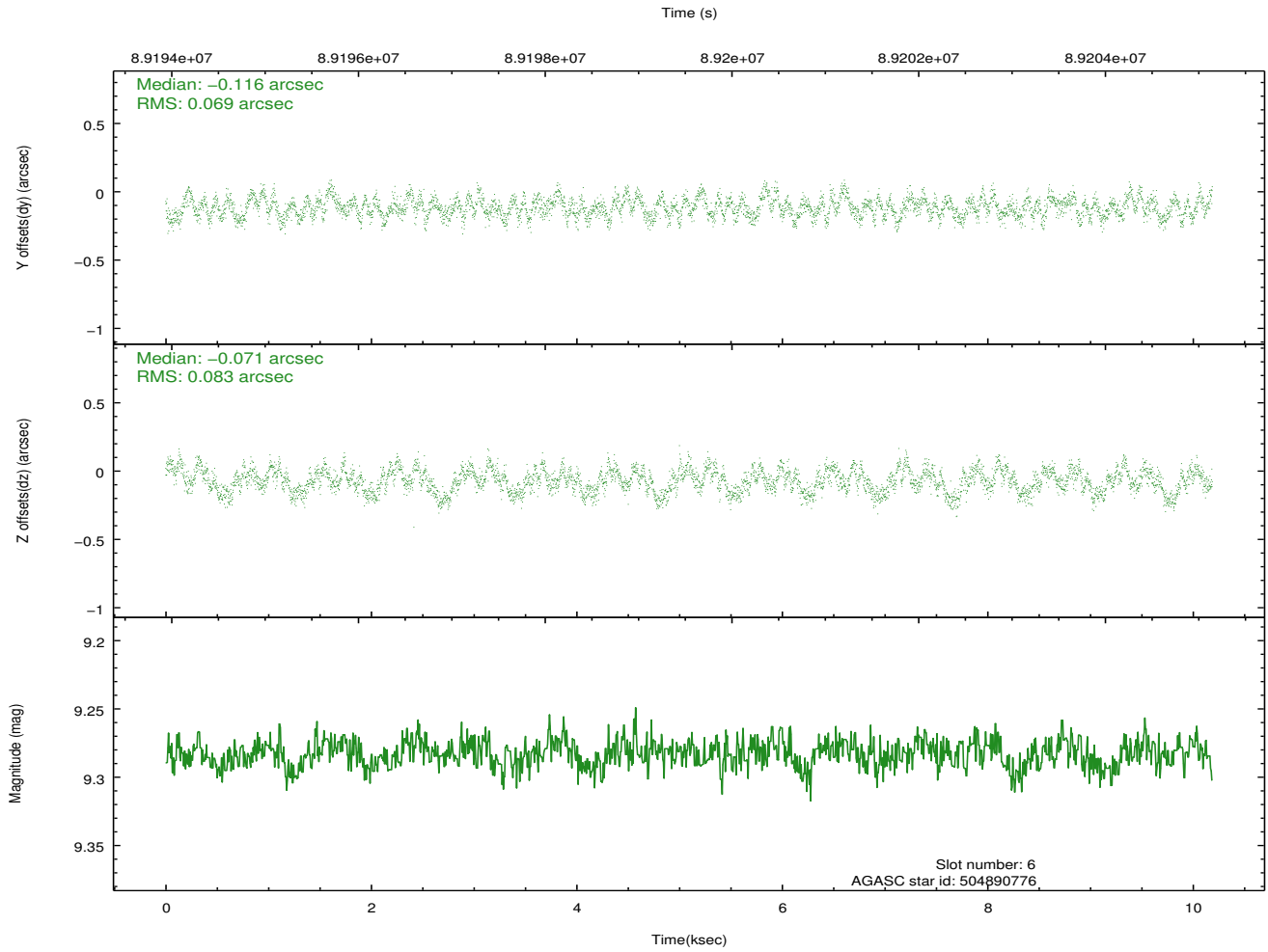
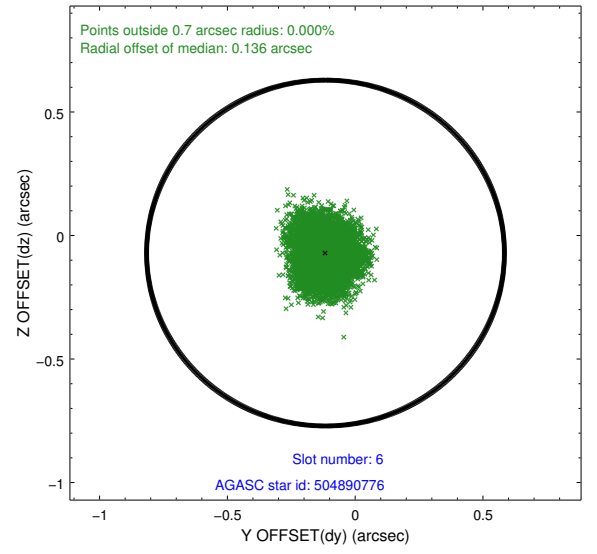
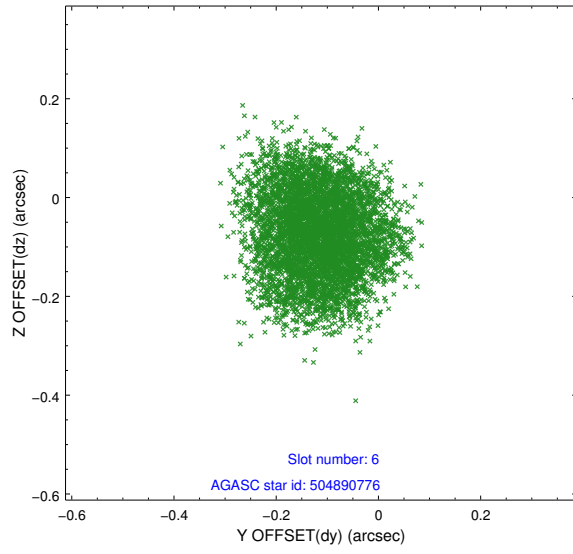
## 2.4.2 Slot 4



### 2.4.3 Slot 5

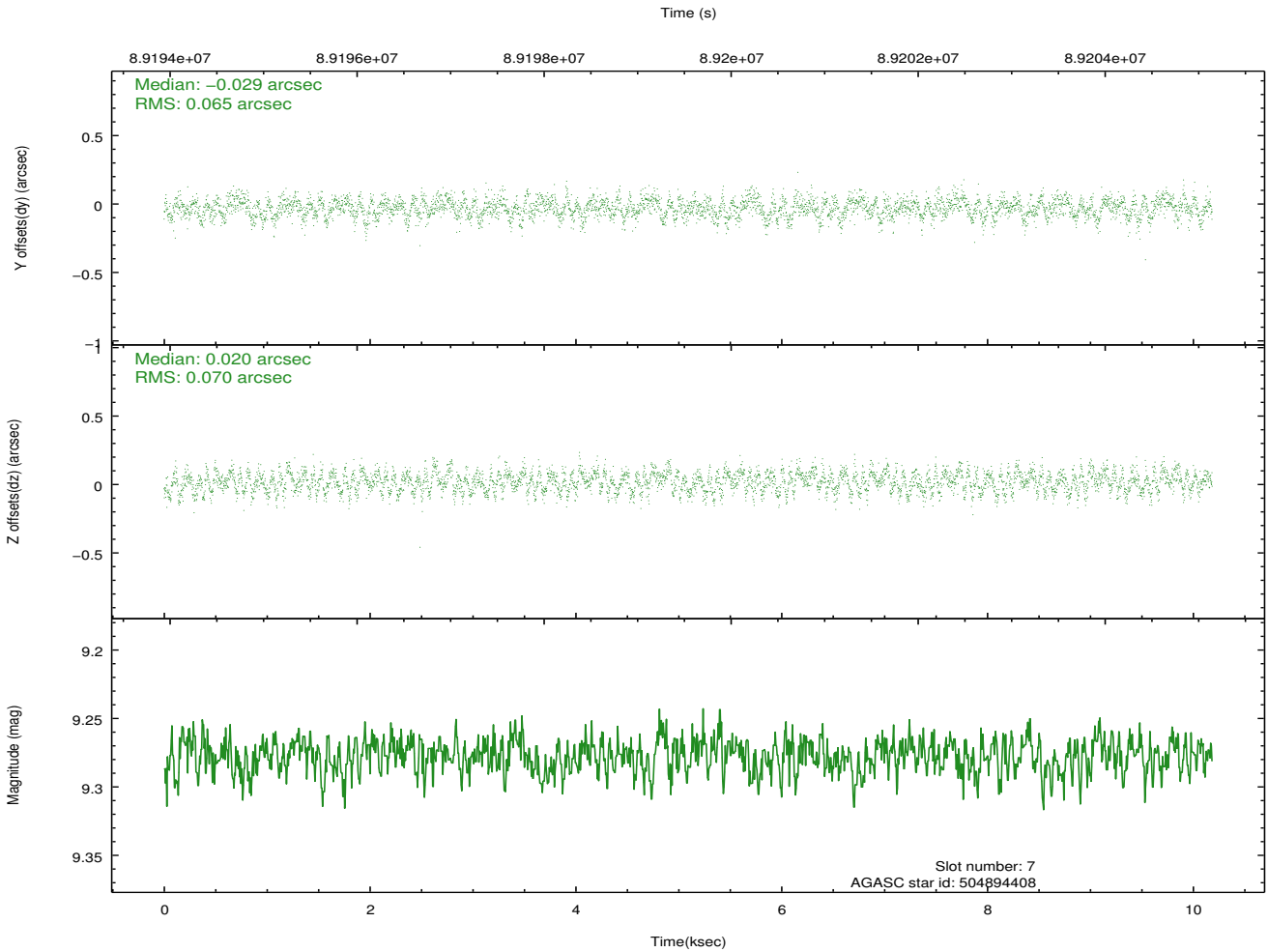
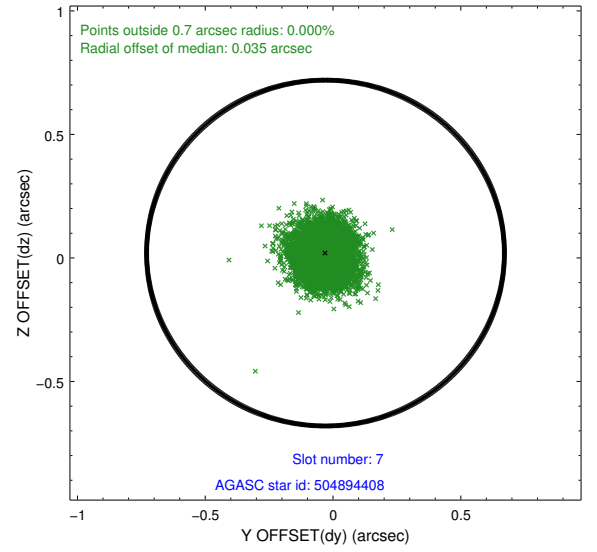
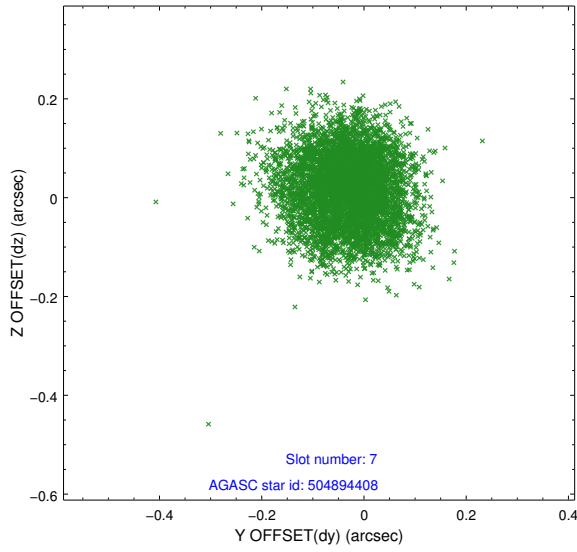


## 2.4.4 Slot 6



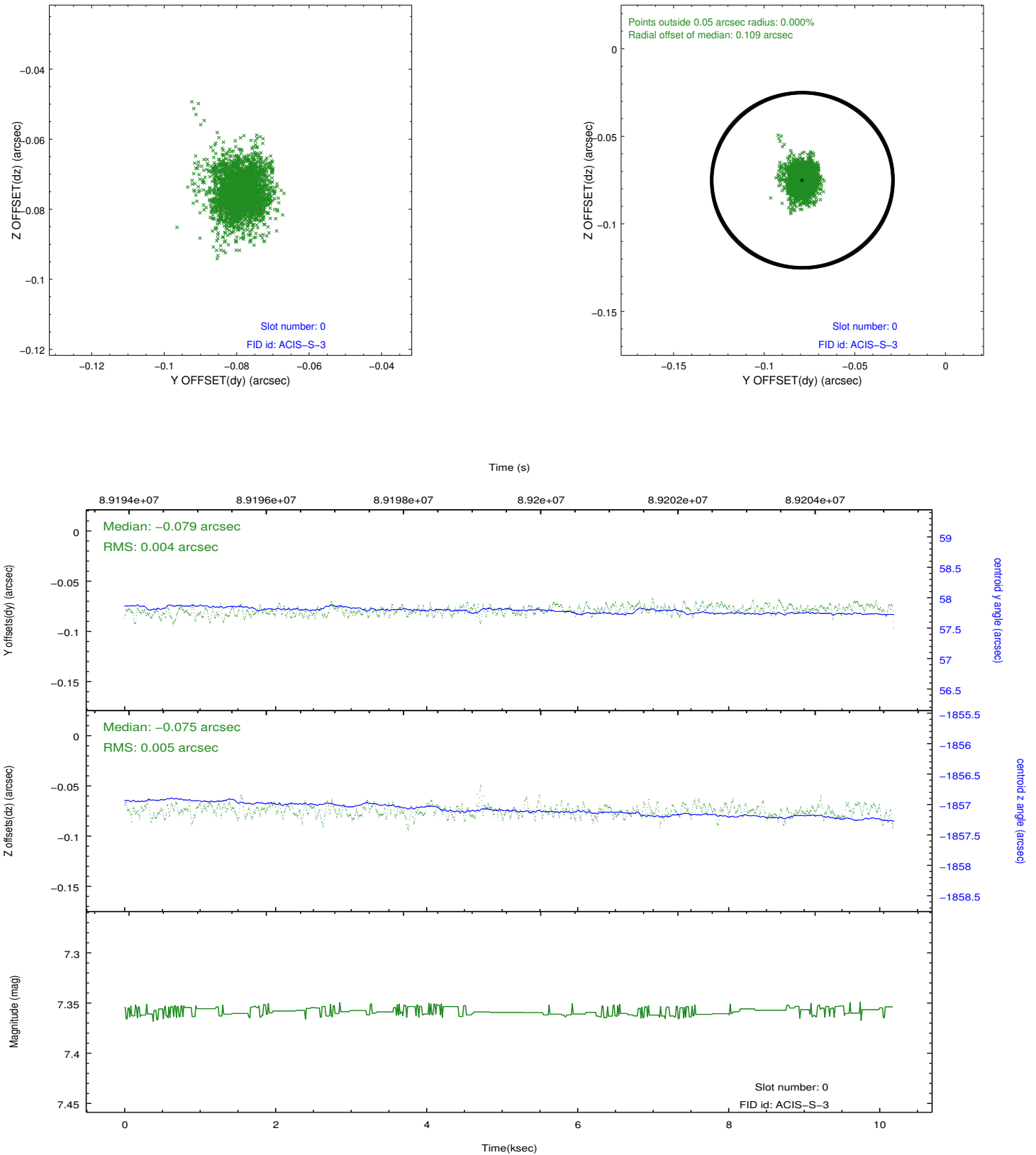


## 2.4.5 Slot 7

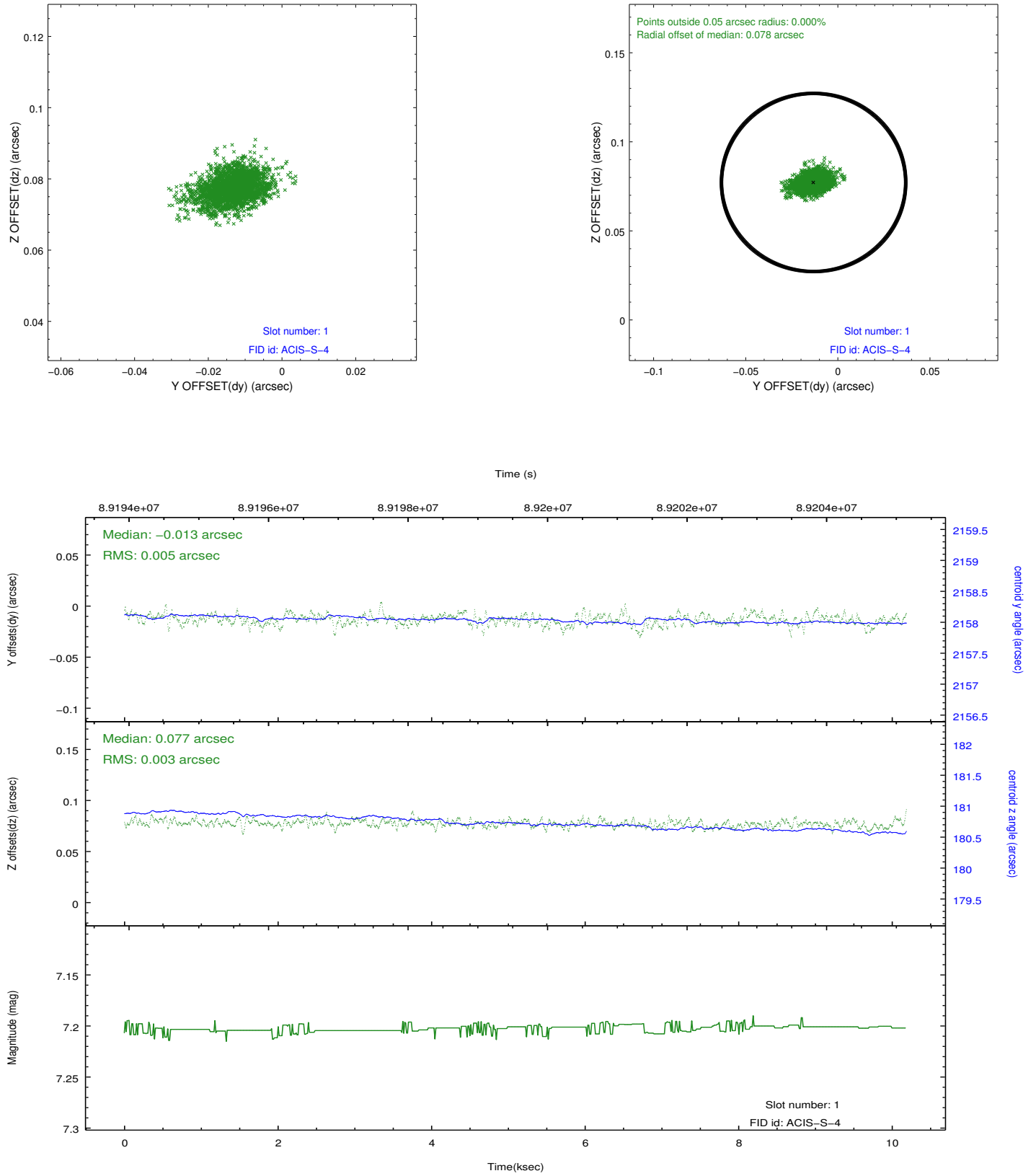


## 2.5 FID Slots

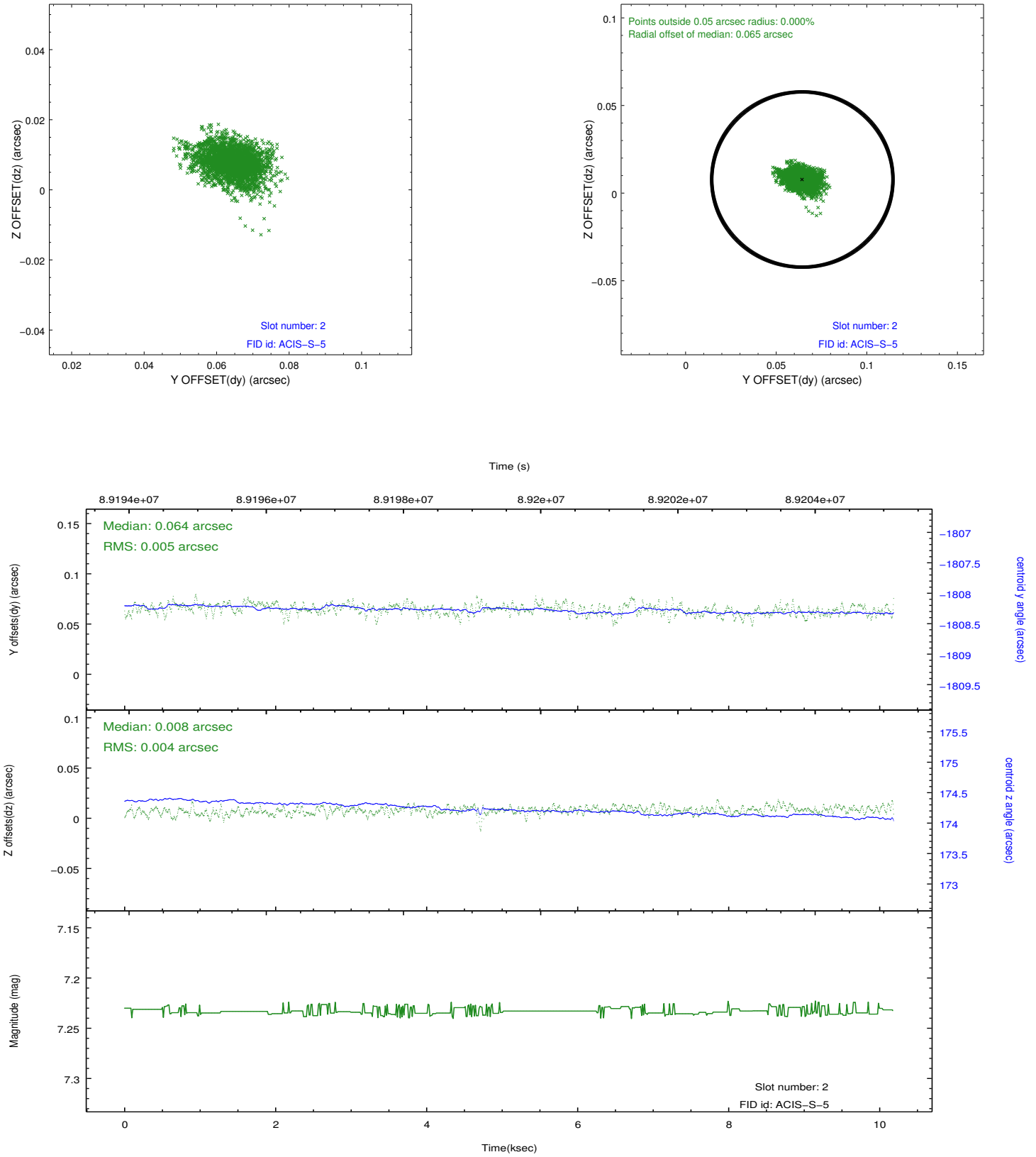
### 2.5.1 Slot 0



## 2.5.2 Slot 1



### 2.5.3 Slot 2



## A Summary

### A.1 Status

V&V Scientist	Jen Lauer
V&V Date (YYYY-MM-DD)	2012.09.10
V&V Edition	1
V&V Disposition and Status	OK
V&V Charge Time	9.756

### A.2 Comments