

V&V Reference Report

L2 ASCDS Version : 7.6.10

Observation 2065 - L2 Version 001
Chandra X-Ray Center

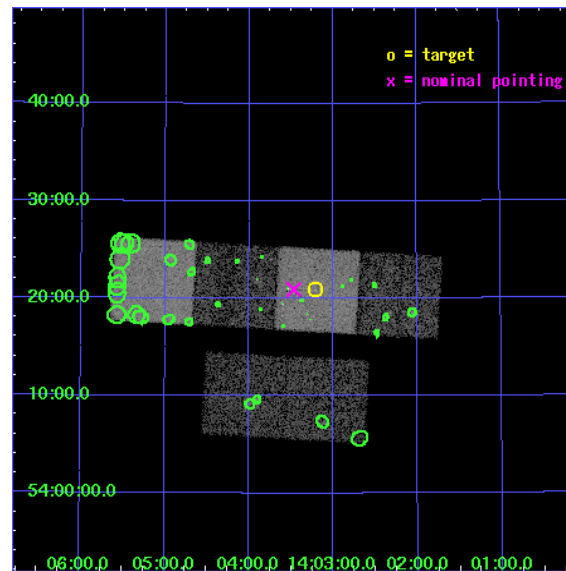
L2 Processing Date : Jun 14 2007

Contents

1	Front	2
2	OBI	3
2.1	OBI	3
2.1.1	Images	3
2.1.2	Bias	3
2.1.3	Parameters	4
2.1.4	Events	4
2.2	Compared Parameters	5
2.3	Aspect	6
2.4	Star Slots	9
2.4.1	Slot 3	9
2.4.2	Slot 4	10
2.4.3	Slot 5	11
2.4.4	Slot 6	12
2.4.5	Slot 7	13
2.5	FID Slots	14
2.5.1	Slot 0	14
2.5.2	Slot 1	15
2.5.3	Slot 2	16
3	Point Sources	17
A	Summary	18
A.1	Status	18
A.2	Comments	18

1 Front

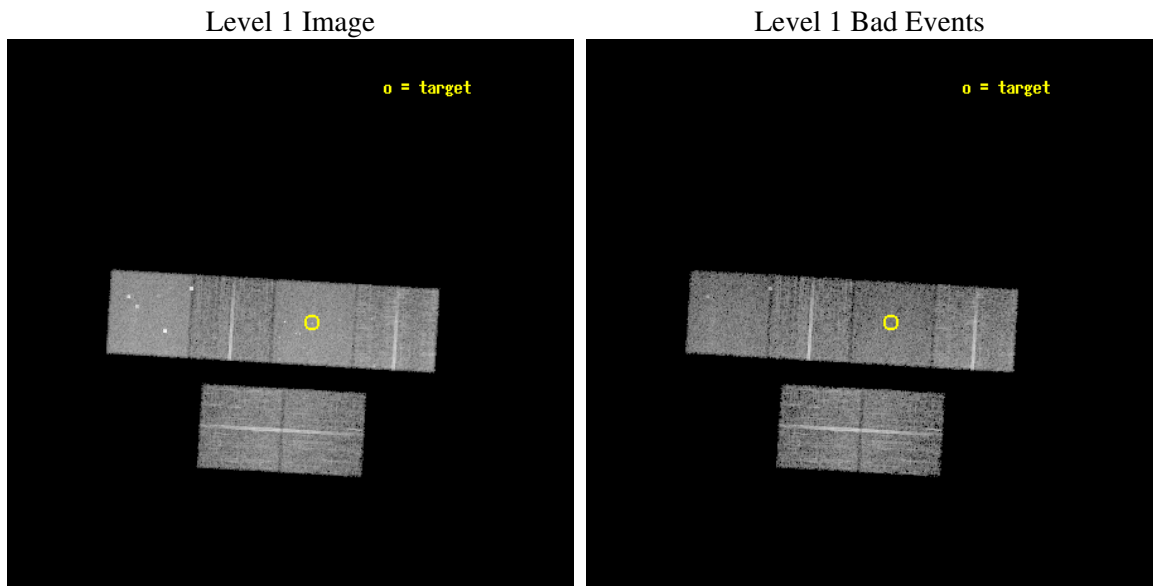
seq_num	600199
obs_id	2065
title	THE X-RAY POINT SOURCE POPULATION IN SPIRAL GALAXIES
observer	Dr Andrea Prestwich
object	NGC 5457
dtcycle	0
cycle	P
ra_targ	210.802083
dec_targ	54.348611
ra_nom	210.86665051187
dec_nom	54.348892288691
roll_nom	3.2901695846181
revision	2
ontime	9753.6000090837
livetime	9630.0940528559
ontime2	9753.6000090837
ontime3	9753.6000090837
ontime5	9753.6000090837
ontime6	9750.359058857
ontime7	9753.6000090837
ontime8	9747.1181783676
l2events	89953



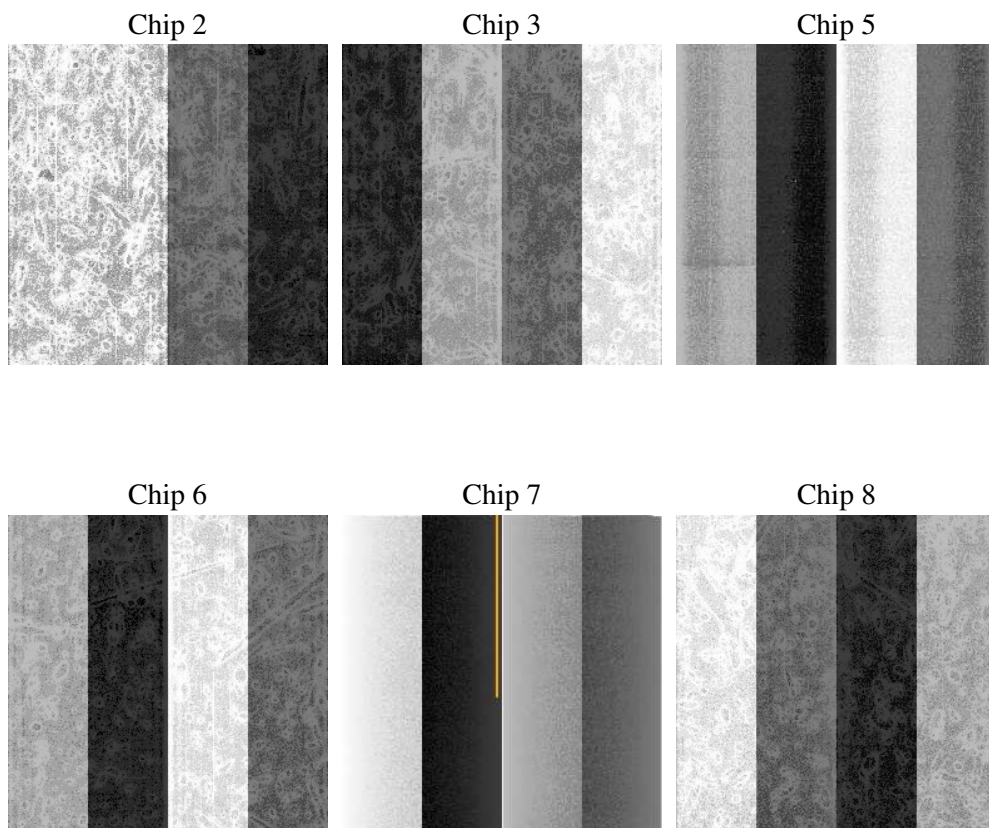
2 OBI

2.1 OBI

2.1.1 Images



2.1.2 Bias



2.1.3 Parameters

obi_num	0
ascdsver	7.6.10
caldbver	3.4.0
date	2007-06-14T06:14:48
revision	2

sched_exp_time	10000.000000
ontime	9753.6000090837
ontime2	9753.6000090837
ontime3	9753.6000090837
ontime5	9753.6000090837
ontime6	9750.359058857
ontime7	9753.6000090837
ontime8	9747.1181783676
l1events	396735

2.1.4 Events

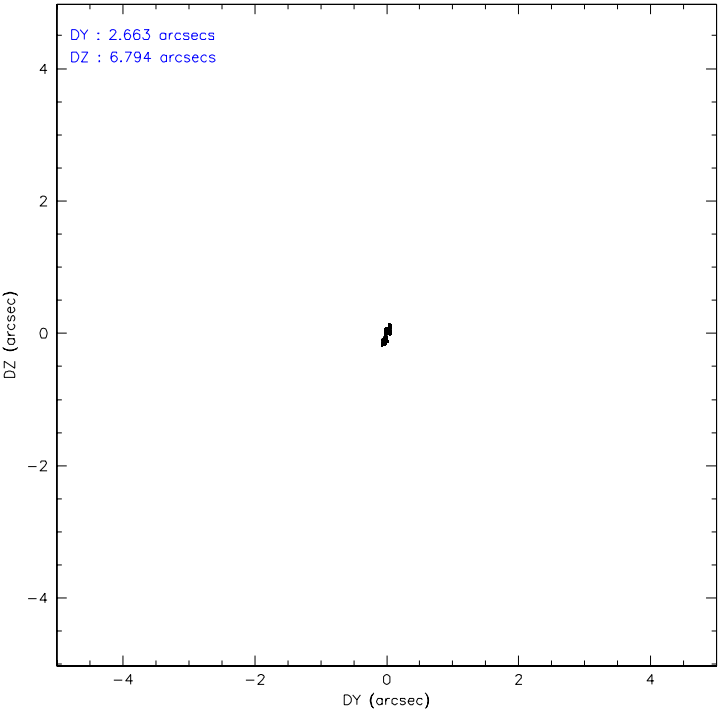
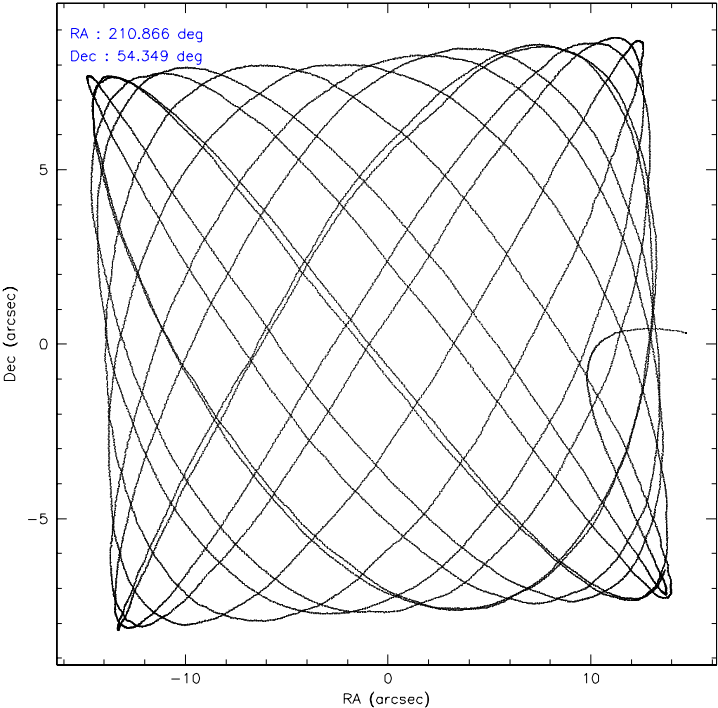
	ccd 2	ccd 3	ccd 5	ccd 6	ccd 7	ccd 8
level 1 events	58345	54588	80935	56589	72921	73357
rejected events	51500	47949	42734	49455	40689	57944
rejected %	88%	87%	52%	87%	55%	78%

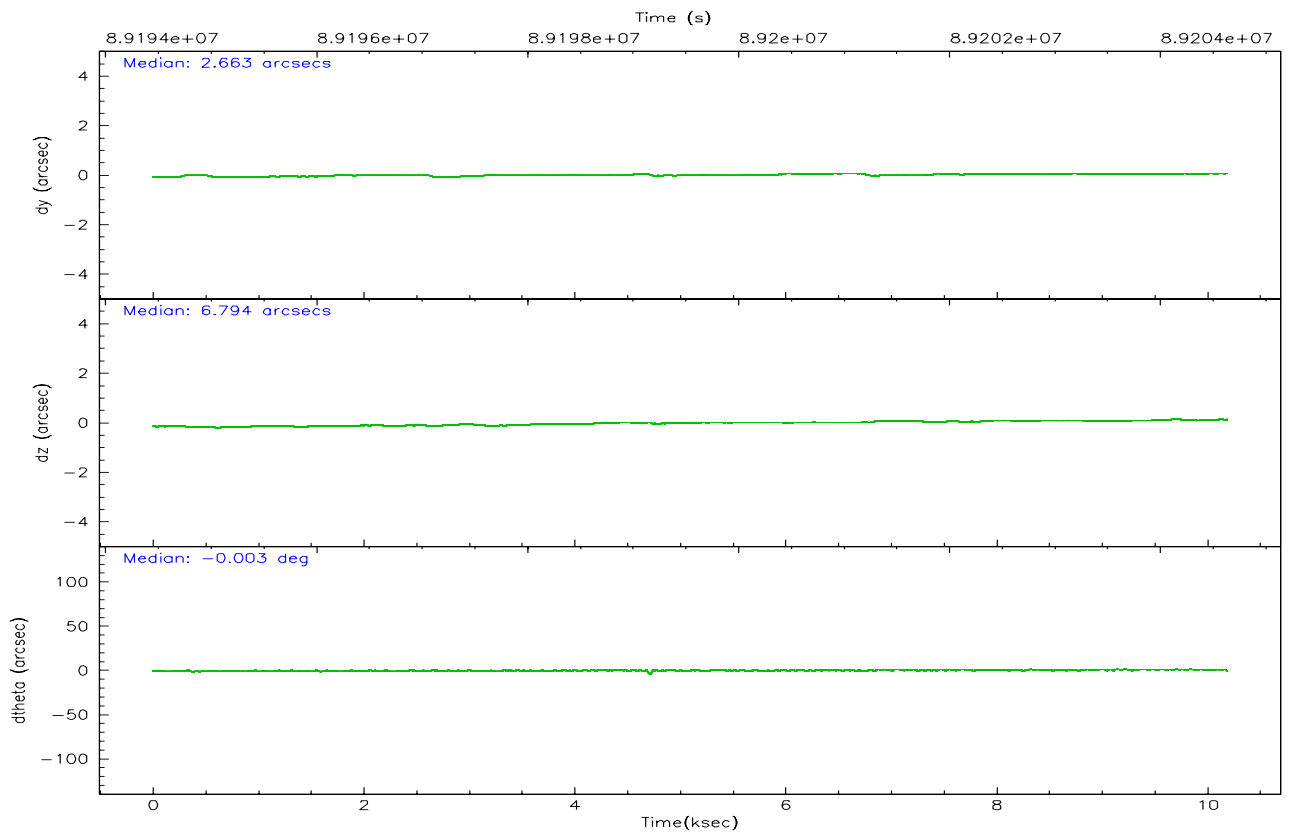
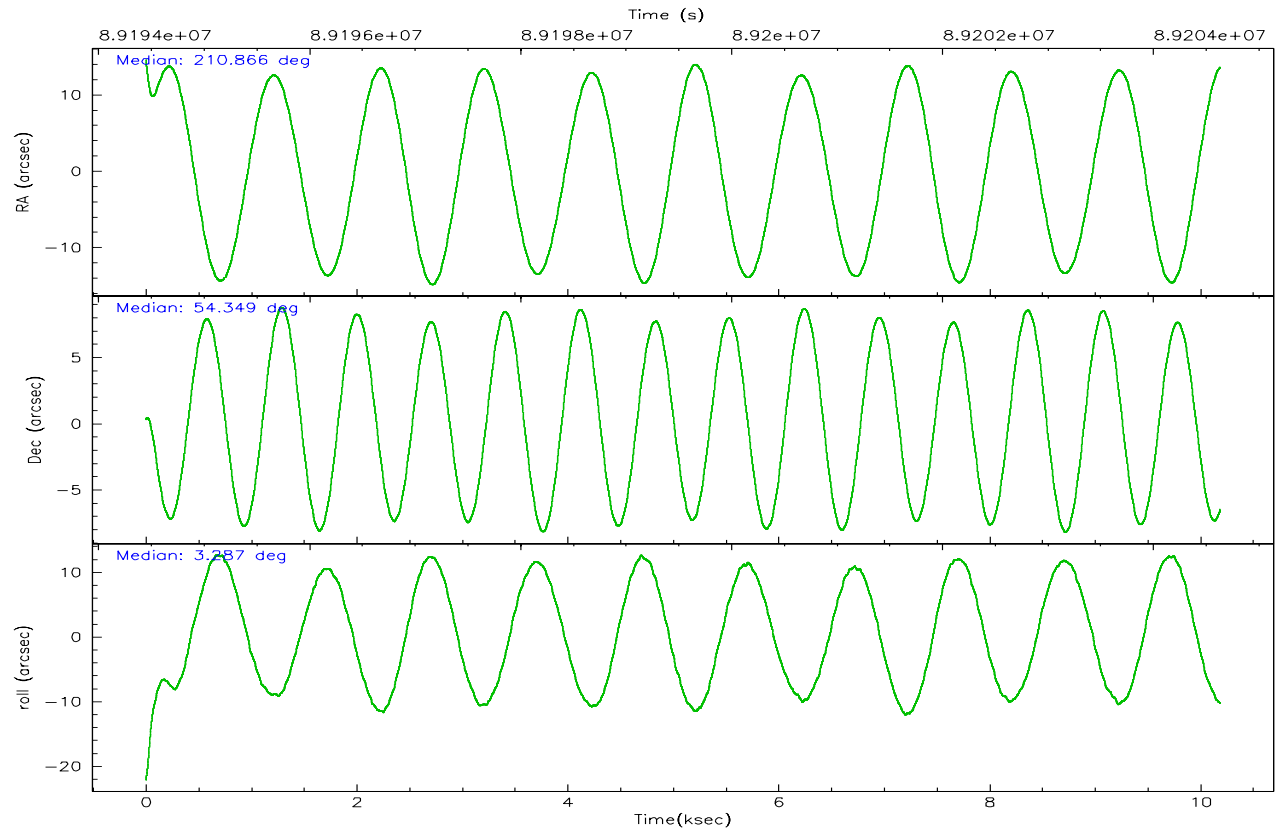
	ccd 2	ccd 3	ccd 5	ccd 6	ccd 7	ccd 8
grade 0 events	2993	2939	5343	3128	3919	5219
	5%	5%	6%	5%	5%	7%
grade 1 events	25	25	194	28	63	50
	0%	0%	0%	0%	0%	0%
grade 2 events	1458	1316	10789	1433	6449	3202
	2%	2%	13%	2%	8%	4%
grade 3 events	611	586	1847	664	2888	1662
	1%	1%	2%	1%	3%	2%
grade 4 events	630	634	1643	633	3031	1586
	1%	1%	2%	1%	4%	2%
grade 5 events	1854	2045	6036	2308	6676	2831
	3%	3%	7%	4%	9%	3%
grade 6 events	1155	1166	18595	1277	15949	3752
	1%	2%	22%	2%	21%	5%
grade 7 events	49619	45877	36488	47118	33946	55055
	85%	84%	45%	83%	46%	75%

2.2 Compared Parameters

Parameter	Planned	Actual	Parameter	Planned	Actual
Instrument	ACIS	ACIS	Obspar format version number	6	6
Detector	ACIS-235678	ACIS-235678	Obspar file type	PREDICTED	ACTUAL
Grating	NONE	NONE	Obspar update status	NONE	UPDATED
Data mode	FAINT	FAINT	Number of optional ACIS chips dropped	0	0
Observation mode	POINTING	POINTING	On-chip summing requested	N	N
Pointing RA	210.827553	210.8666505118682	Subarray requested	NONE	NONE
Pointing Dec	54.333752	54.34889228869092	Alternating exposures requested	N	N
Pointing Roll	3.165322	3.290169584618095	Primary exposure time	0.000000	3.2
SIM focus pos (mm)	-0.684267	-0.6828225247311905			
SIM defocus (mm)	0	0.001444936568705701			
SIM translation stage pos (mm)	-190.132523	-190.1400660498719			
SIM translation stage offset (mm)	0	0.00754346686406393			
Observation start time	89194632.184000	89193935.841553			
Observation start date	2000-10-29T08:16:08	2000-10-29T08:05:35			
Observation end time	89204632.184000	89205079.129474			
Observation end date	2000-10-29T11:02:48	2000-10-29T11:11:19			
Read mode	TIMED	TIMED			

2.3 Aspect



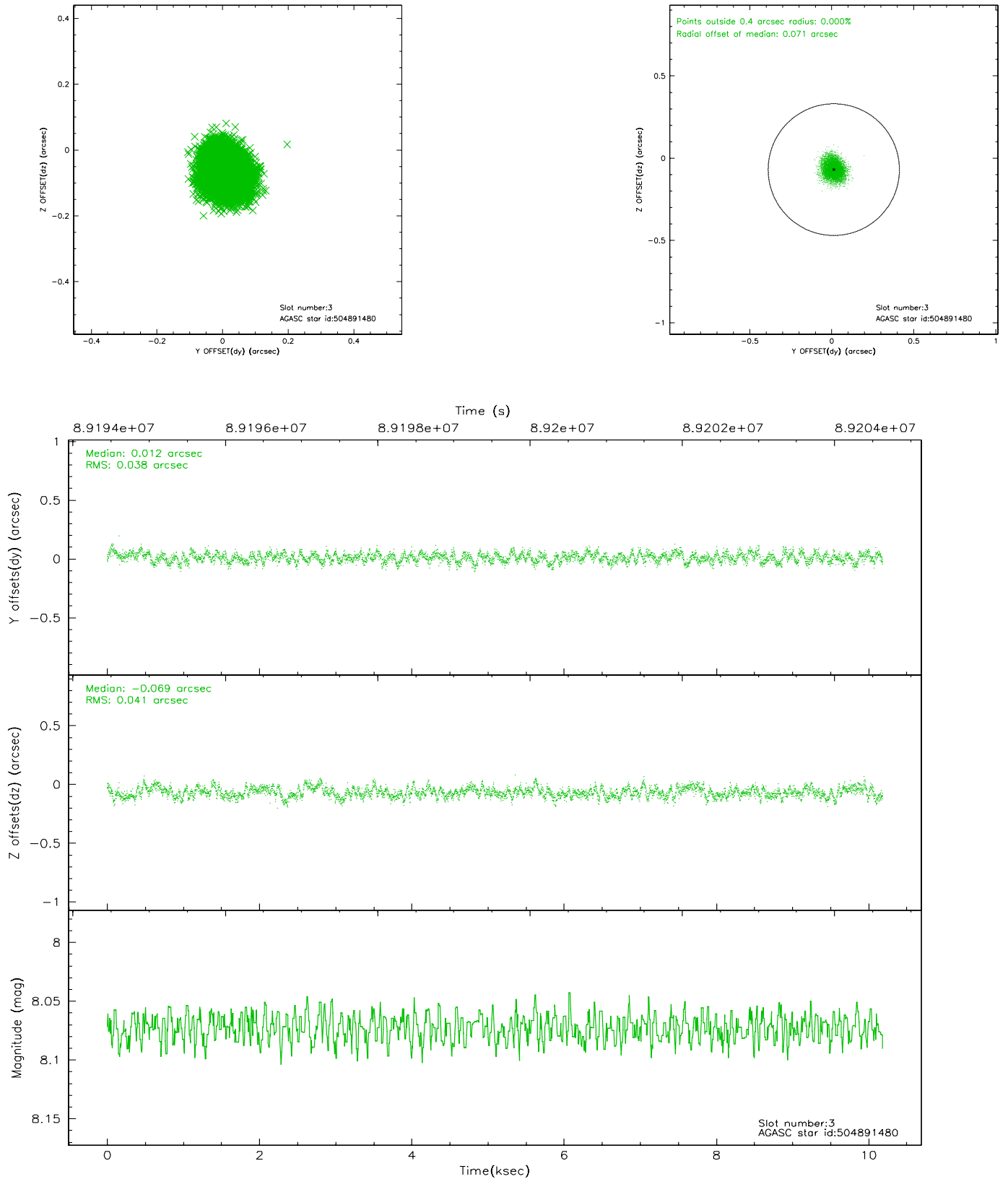


Slot Statistics

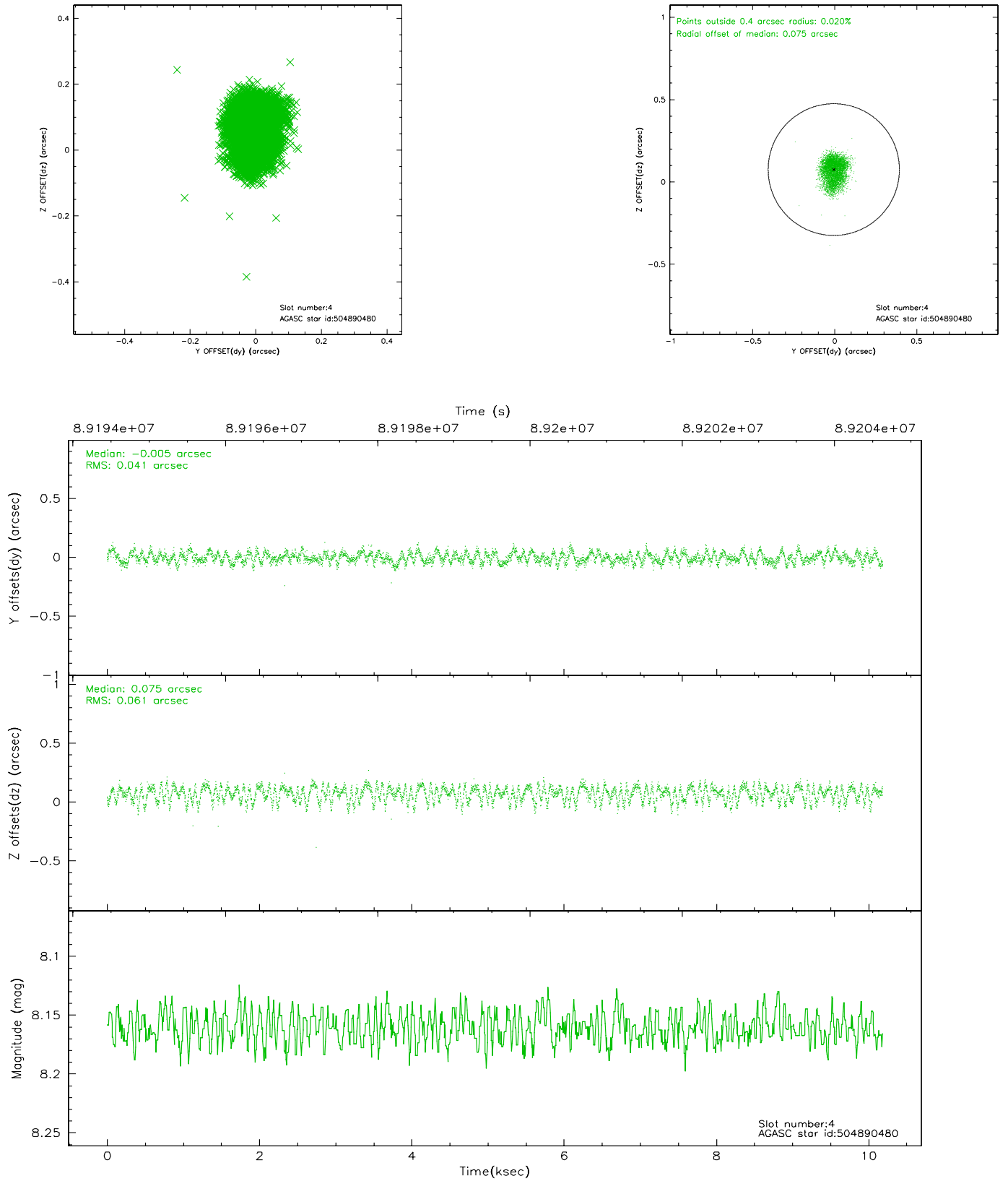
slot	status	id	mag	n_pts	med_dy	med_dz	dr1	dr2	ra	dec	mean_y	mean_z
0	FID	ACIS-S-3	7.36	2484	-0.078	-0.050	0.007	0.012	0.000000	0.000000	57.79	-1857.05
1	FID	ACIS-S-4	7.20	2485	-0.050	0.065	0.006	0.011	0.000000	0.000000	2158.02	179.99
2	FID	ACIS-S-5	7.23	2485	0.100	-0.005	0.006	0.011	0.000000	0.000000	-1807.37	174.30
3	GUIDE	504891480	8.07	4970	0.012	-0.069	0.060	0.095	210.708012	54.666096	-181.66	1208.93
4	GUIDE	504890480	8.16	4969	-0.005	0.075	0.078	0.125	210.132463	53.768436	-1587.94	-1942.56
5	GUIDE	504894856	8.98	4968	0.141	0.057	0.062	0.100	209.819510	54.132689	-2161.38	-590.20
6	GUIDE	504890776	9.28	4969	-0.116	-0.071	0.119	0.176	211.095934	54.816966	652.17	1707.53
7	GUIDE	504894408	9.28	4968	-0.029	0.020	0.104	0.161	211.942794	54.047749	2298.67	-1138.71

2.4 Star Slots

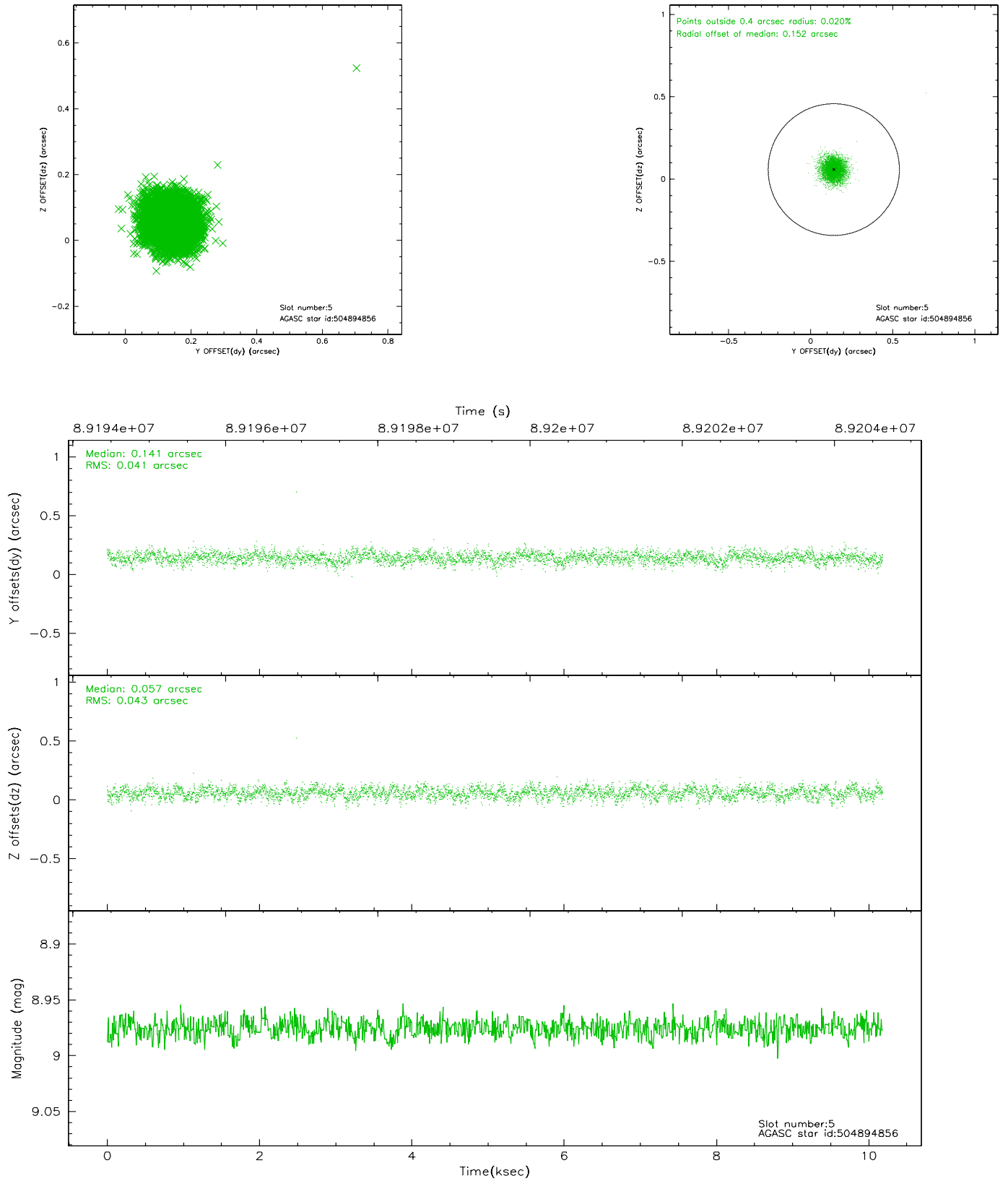
2.4.1 Slot 3



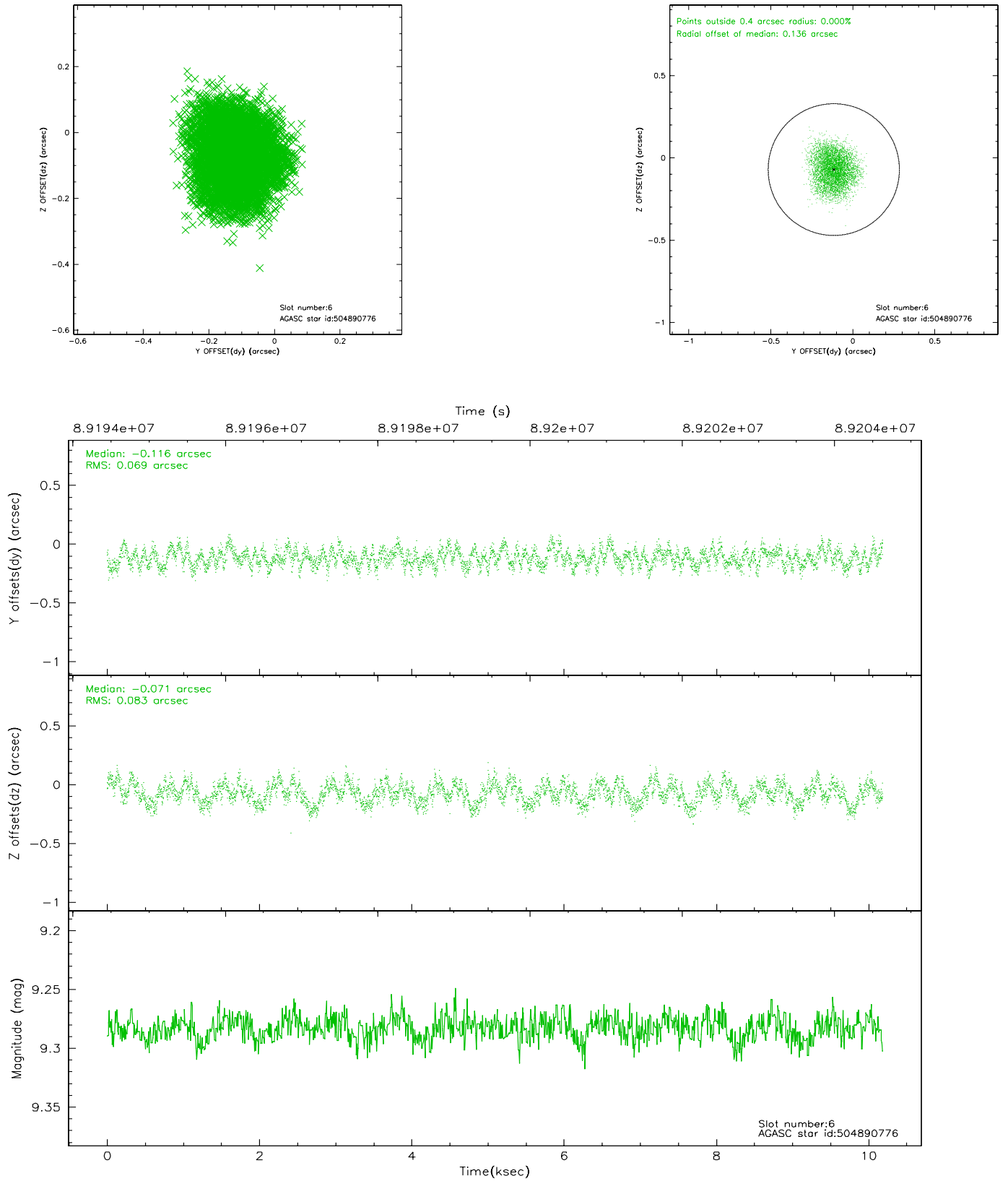
2.4.2 Slot 4



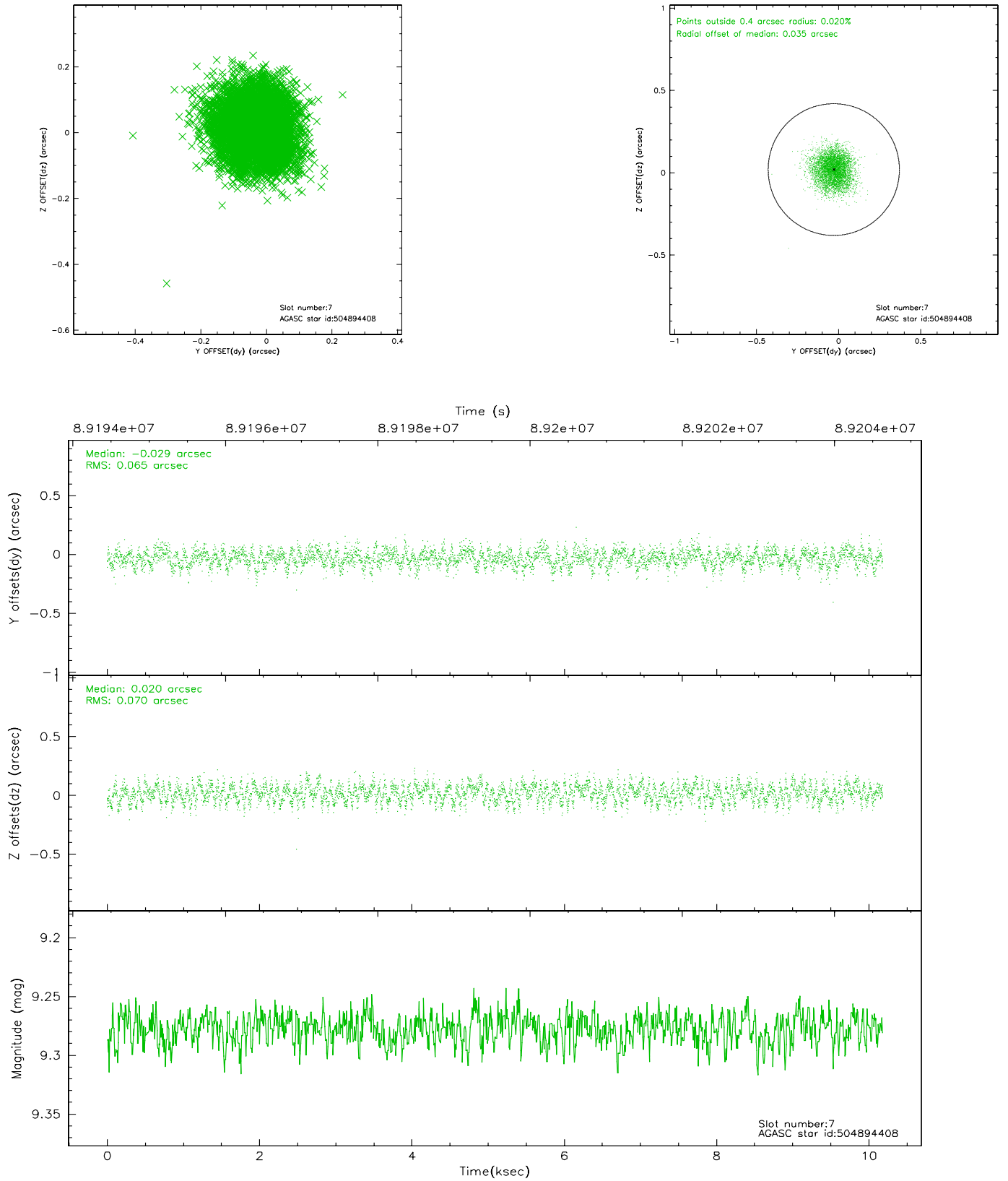
2.4.3 Slot 5



2.4.4 Slot 6

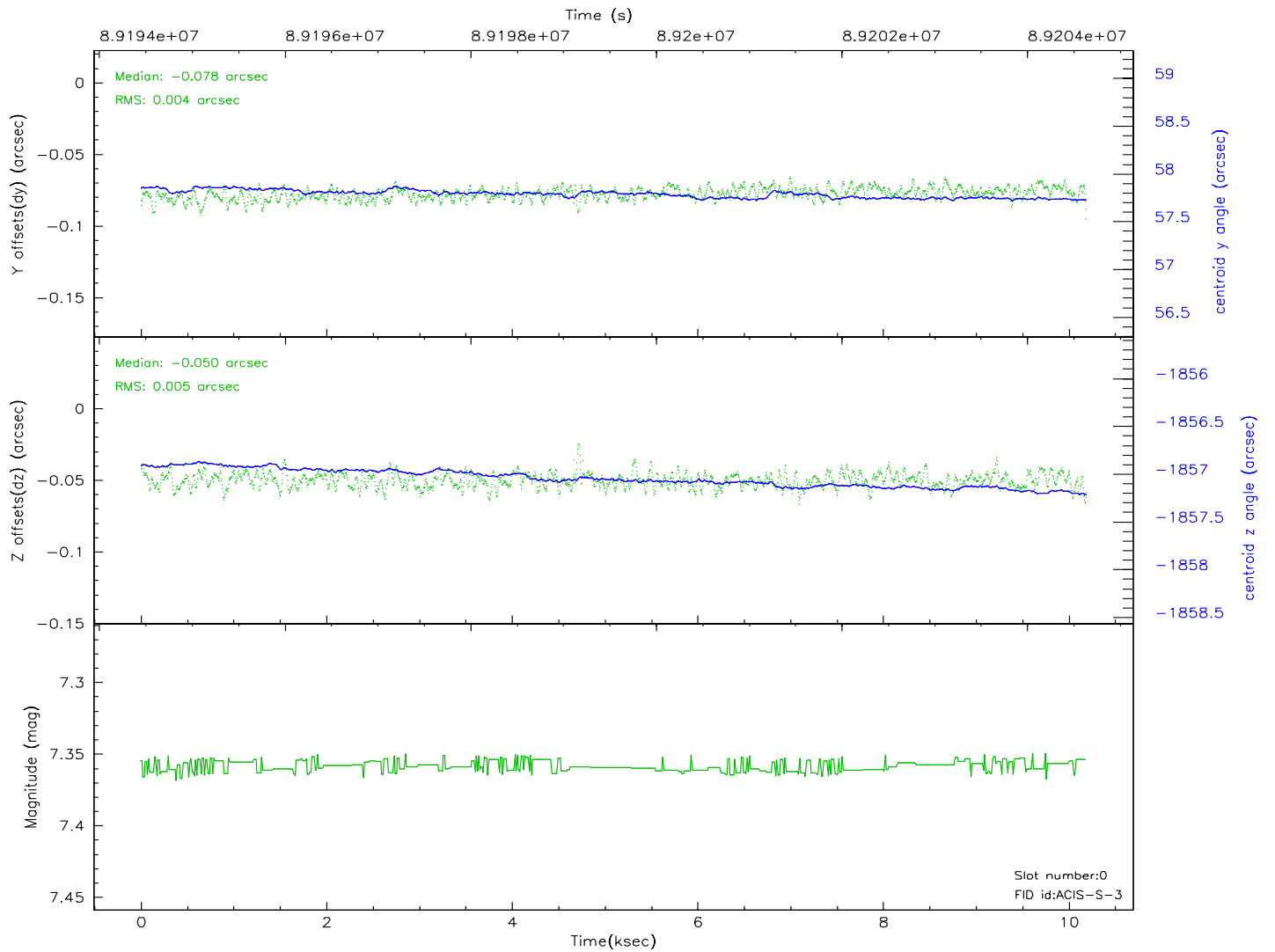
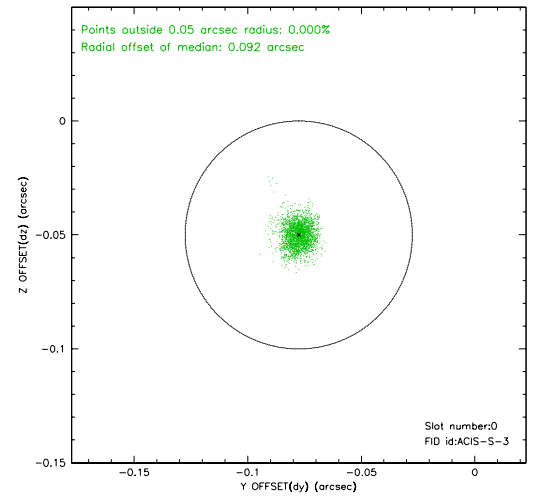
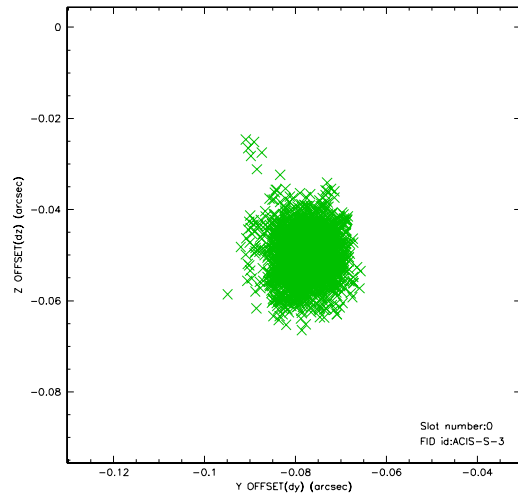


2.4.5 Slot 7

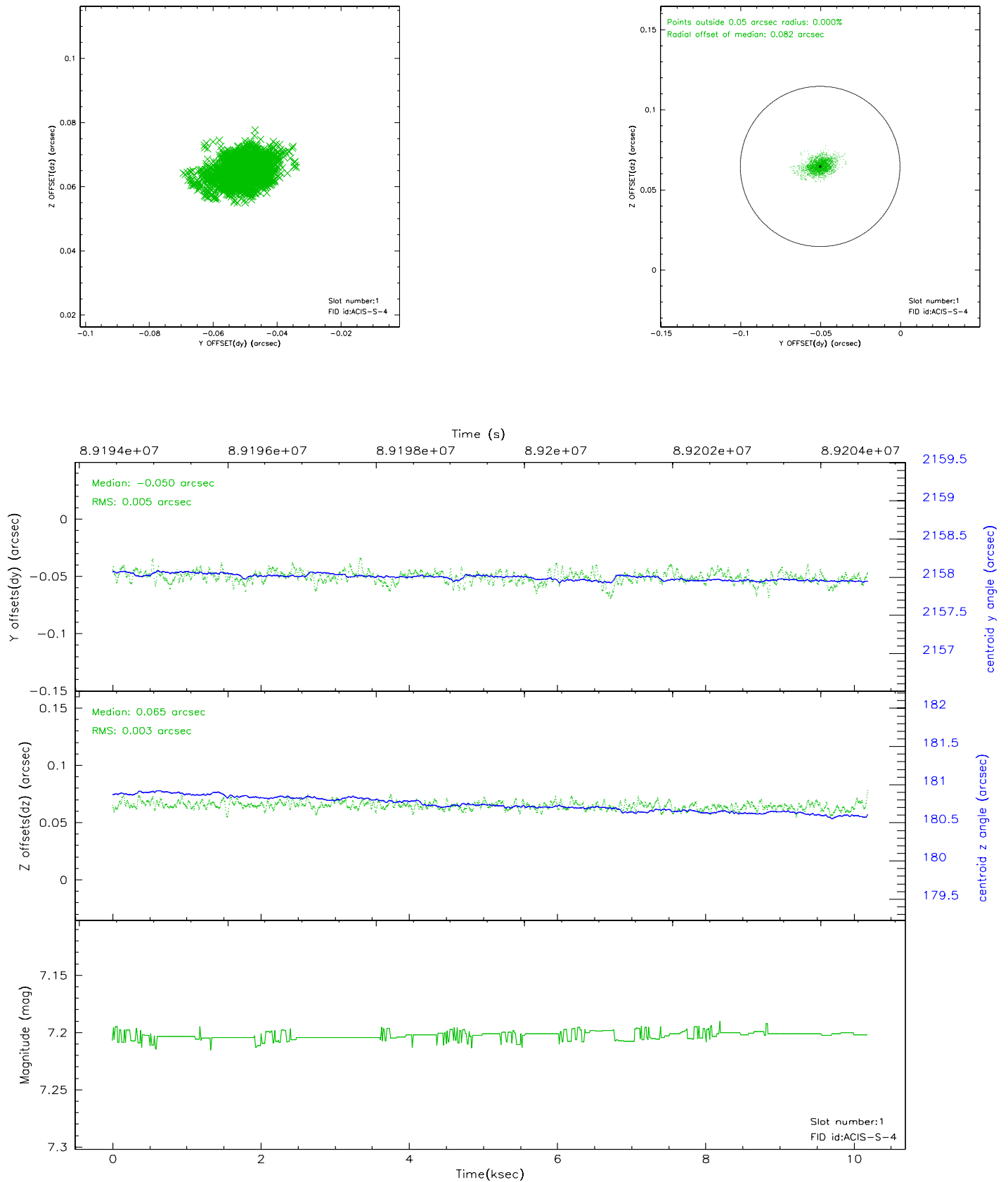


2.5 FID Slots

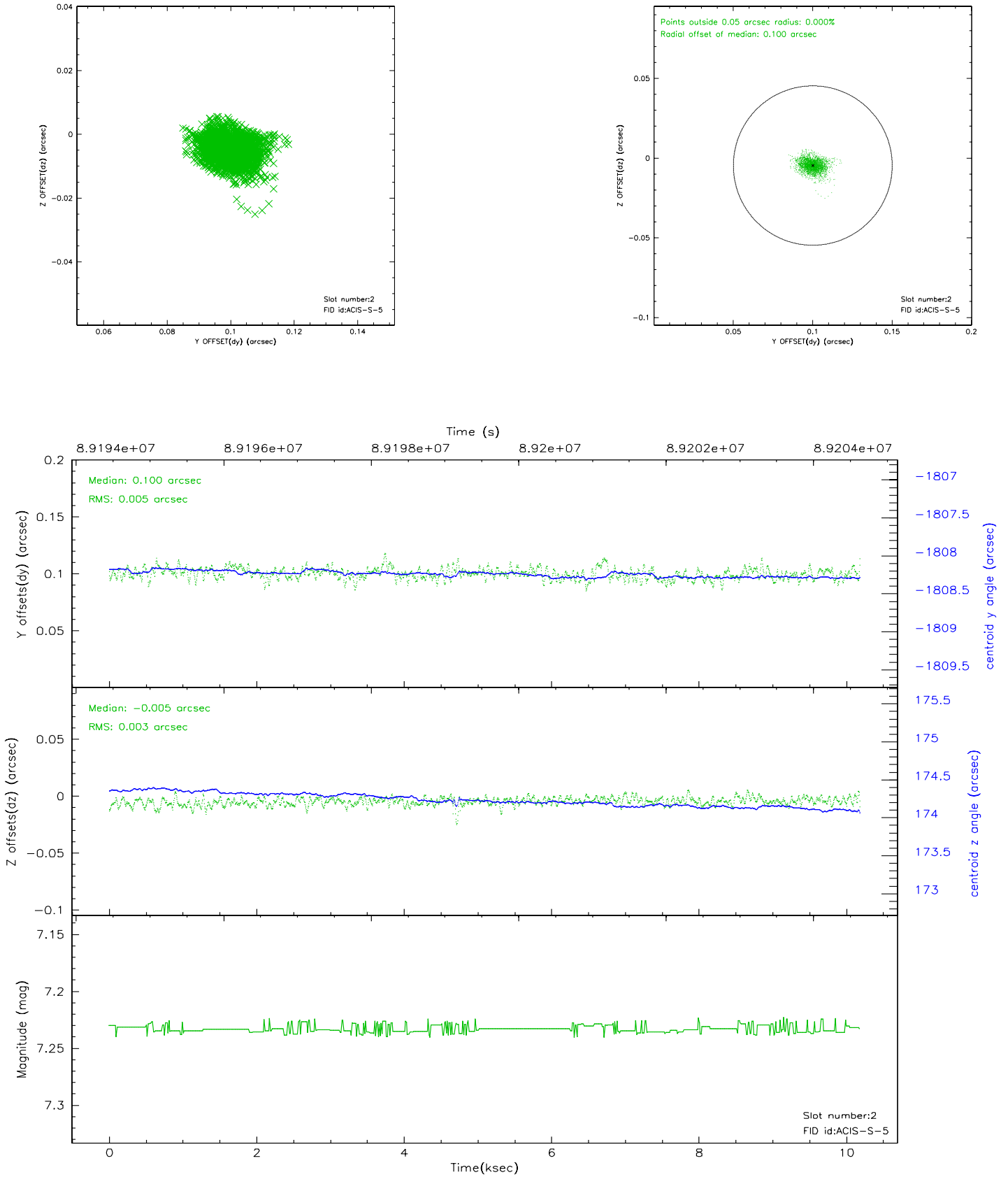
2.5.1 Slot 0



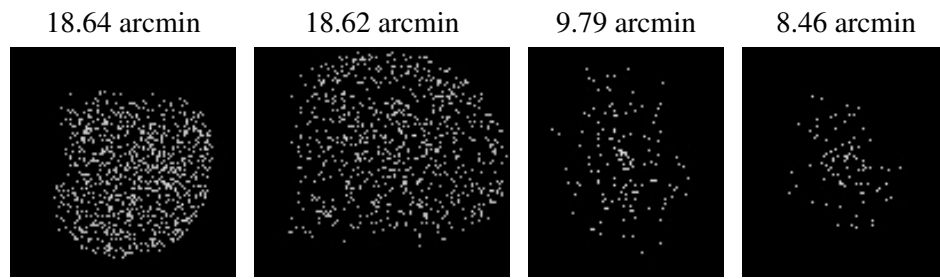
2.5.2 Slot 1



2.5.3 Slot 2



3 Point Sources



A Summary

A.1 Status

V&V Scientist	Beth Sundheim
V&V Date (YYYY-MM-DD)	2007.06.14
V&V Edition	1
V&V Disposition and Status	OK
V&V Charge Time	9.756

A.2 Comments