

# V&V Reference Report

## L2 ASCDS Version : 7.6.9

Observation 2055 - L2 Version 001  
Chandra X-Ray Center

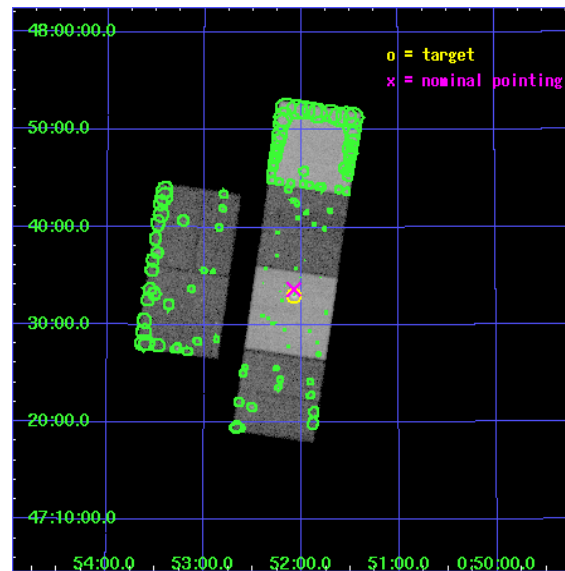
L2 Processing Date : Dec 8 2006

## Contents

<b>1</b>	<b>Front</b>	<b>2</b>
<b>2</b>	<b>OBI</b>	<b>3</b>
2.1	OBI . . . . .	3
2.1.1	Images . . . . .	3
2.1.2	Bias . . . . .	3
2.1.3	Parameters . . . . .	4
2.1.4	Events . . . . .	4
2.2	Compared Parameters . . . . .	5
2.3	Aspect . . . . .	6
2.4	Star Slots . . . . .	9
2.4.1	Slot 3 . . . . .	9
2.4.2	Slot 4 . . . . .	10
2.4.3	Slot 5 . . . . .	11
2.4.4	Slot 6 . . . . .	12
2.4.5	Slot 7 . . . . .	13
2.5	FID Slots . . . . .	14
2.5.1	Slot 0 . . . . .	14
2.5.2	Slot 1 . . . . .	15
2.5.3	Slot 2 . . . . .	16
<b>3</b>	<b>Point Sources</b>	<b>17</b>
<b>A</b>	<b>Summary</b>	<b>18</b>
A.1	Status . . . . .	18
A.2	Comments . . . . .	18

# 1 Front

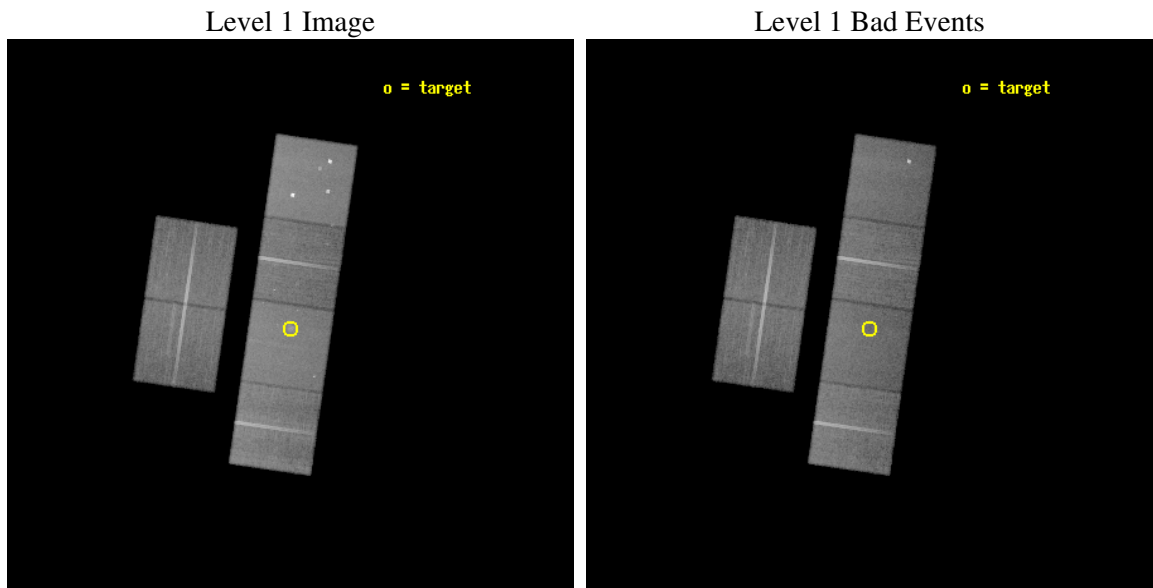
seq_num	600189
obs_id	2055
title	THE X-RAY POINT SOURCE POPULATION IN SPIRAL GALAXIES
observer	Dr. Andrea Prestwich
object	NGC 278
dtcycle	0
cycle	P
ra_targ	13.019167
dec_targ	47.551111
ra_nom	13.019682102248
dec_nom	47.560872580867
roll_nom	98.260718372263
revision	2
ontime	38748.717976004
livetime	38258.058377315
ontime2	38745.477125436
ontime3	38748.718085691
ontime5	38748.718085691
ontime6	38745.477095529
ontime7	38748.717976004
ontime8	38748.718085691
l2events	379569



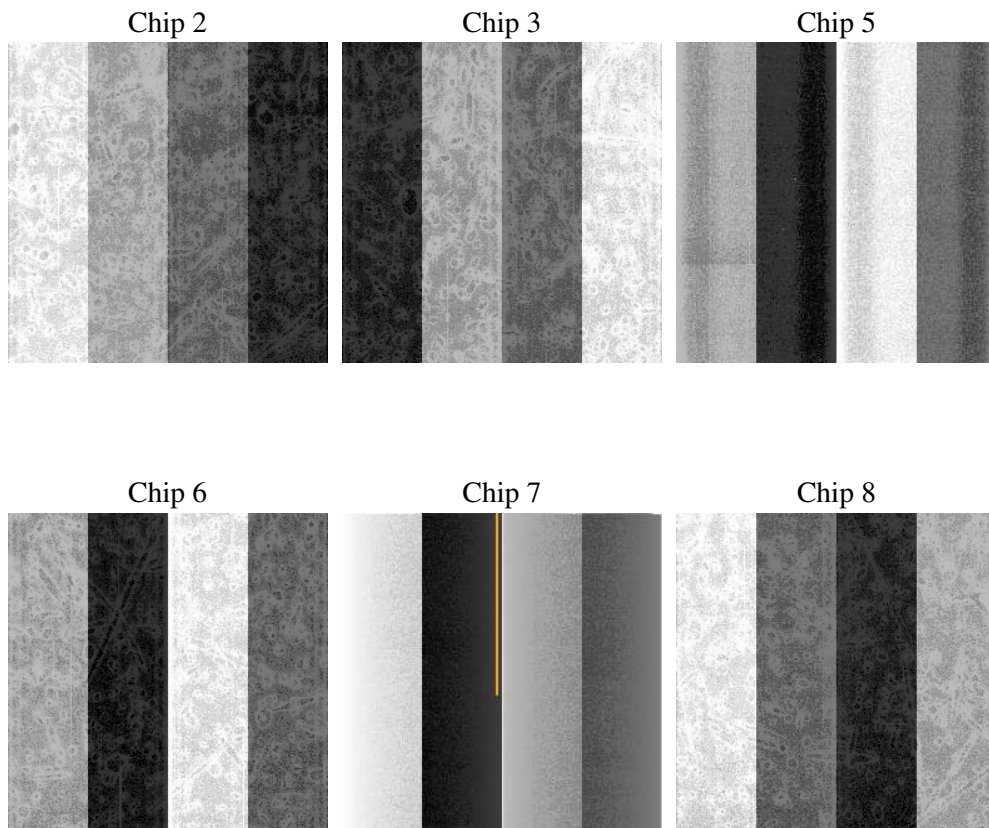
## 2 OBI

### 2.1 OBI

#### 2.1.1 Images



#### 2.1.2 Bias



### 2.1.3 Parameters

obi_num	0
ascdsver	7.6.9
caldsver	3.2.4
date	2006-12-08T12:19:51
revision	2

sched_exp_time	38705.000000
ontime	38752.606831849
ontime2	38749.365981281
ontime3	38752.606941536
ontime5	38752.606941536
ontime6	38749.365951374
ontime7	38752.606831849
ontime8	38752.606941536
l1events	1803550

### 2.1.4 Events

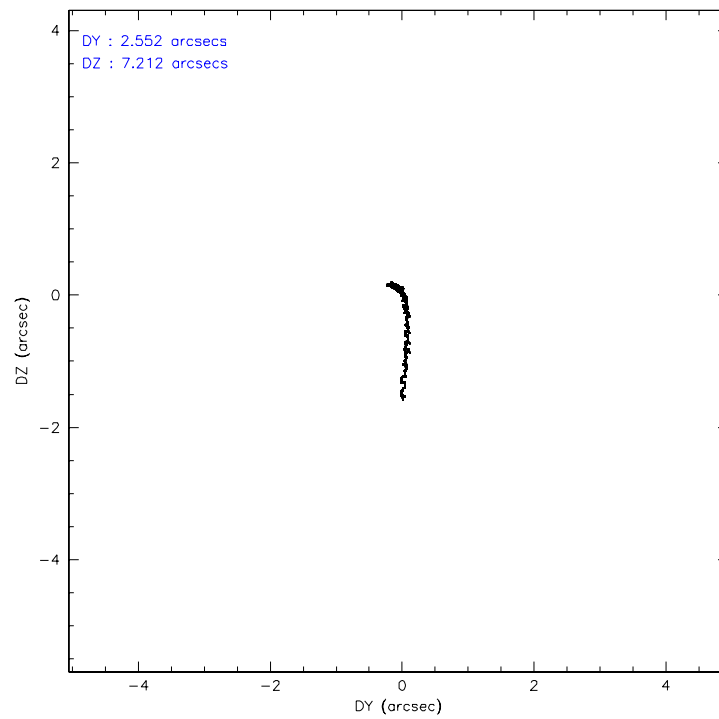
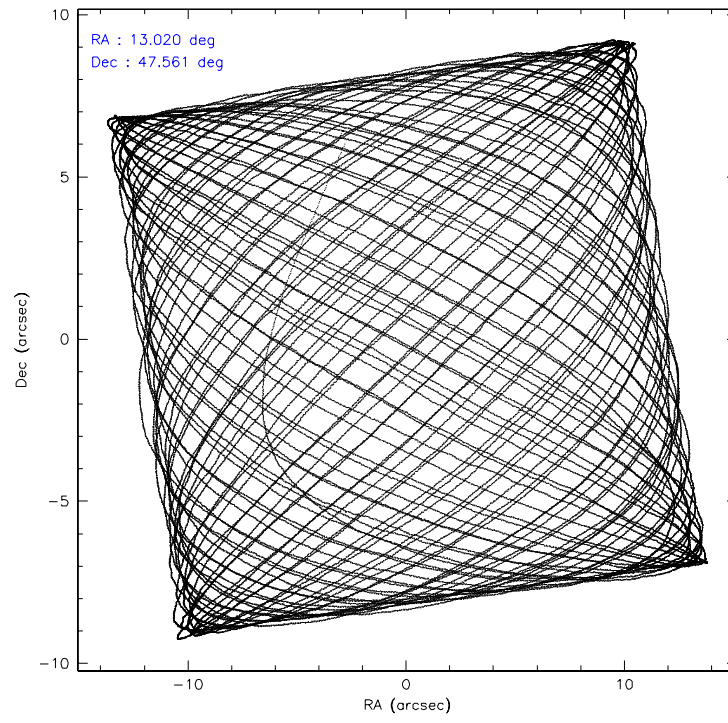
	ccd 2	ccd 3	ccd 5	ccd 6	ccd 7	ccd 8
level 1 events	260118	250405	373871	262648	331382	325126
rejected events	231103	222183	202126	232410	200457	260349
rejected %	88%	88%	54%	88%	60%	80%

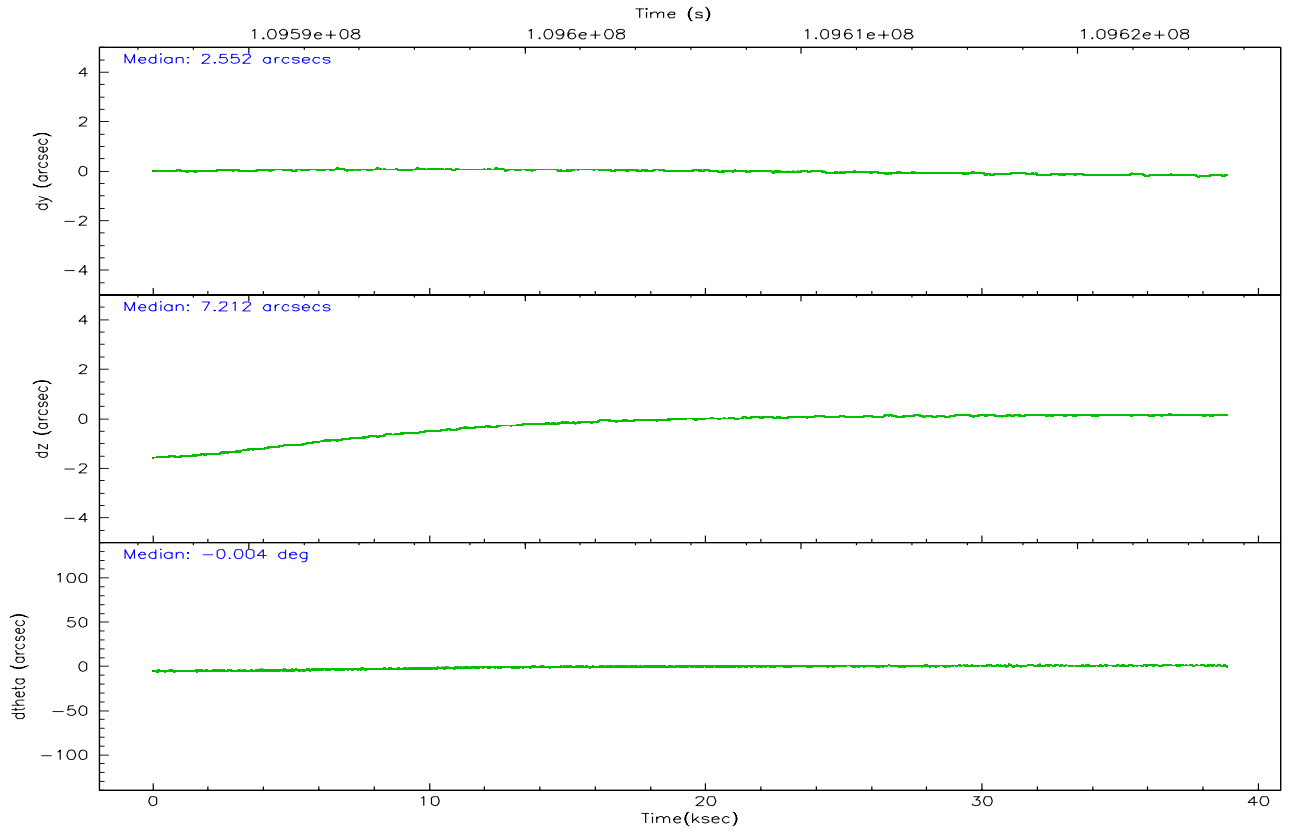
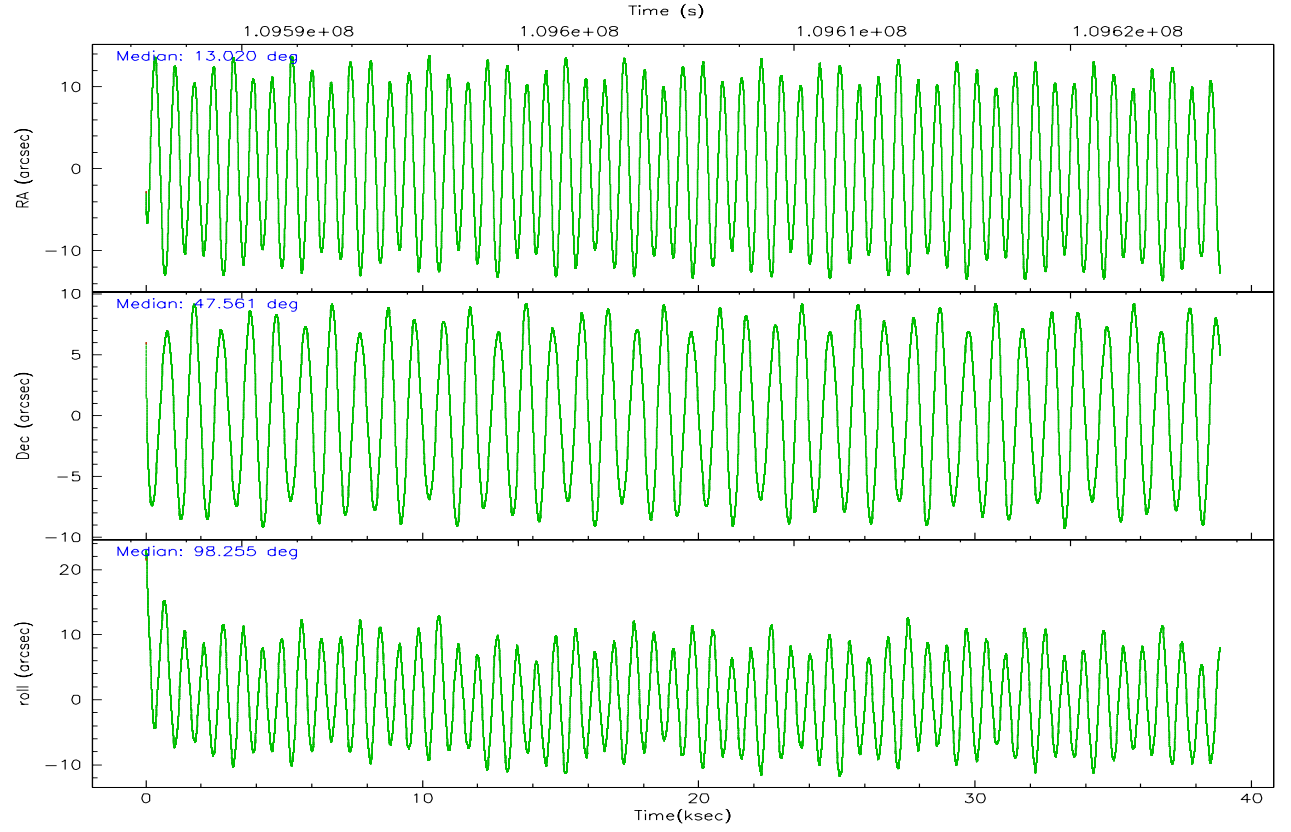
	ccd 2	ccd 3	ccd 5	ccd 6	ccd 7	ccd 8
grade 0 events	12618	12167	21882	12695	8860	20160
	4%	4%	5%	4%	2%	6%
grade 1 events	127	104	292	127	217	186
	0%	0%	0%	0%	0%	0%
grade 2 events	6200	5668	52522	5912	32047	13913
	2%	2%	14%	2%	9%	4%
grade 3 events	2623	2750	3848	2964	7514	7009
	1%	1%	1%	1%	2%	2%
grade 4 events	2640	2717	3612	2884	7332	6615
	1%	1%	0%	1%	2%	2%
grade 5 events	8910	9498	17962	10482	22387	13652
	3%	3%	4%	3%	6%	4%
grade 6 events	4940	4923	89895	5787	75181	17082
	1%	1%	24%	2%	22%	5%
grade 7 events	222060	212578	183858	221797	177844	246509
	85%	84%	49%	84%	53%	75%

## 2.2 Compared Parameters

Parameter	Planned	Actual	Parameter	Planned	Actual
Instrument	ACIS	ACIS	Obspar format version number	6	6
Detector	ACIS-235678	ACIS-235678	Obspar file type	PREDICTED	ACTUAL
Grating	NONE	NONE	Obspar update status	NONE	UPDATED
Data mode	FAINT	FAINT	Number of optional ACIS chips dropped	0	0
Observation mode	POINTING	POINTING	On-chip summing requested	N	N
Pointing RA	13.045044	13.01968210224758	Subarray requested	NONE	NONE
Pointing Dec	47.539620	47.56087258086709	Alternating exposures requested	N	N
Pointing Roll	98.085372	98.26071837226311	Primary exposure time	0.000000	3.2
SIM focus pos (mm)	-0.684267	-0.6828225247311905			
SIM defocus (mm)	0	0.001444936568705701			
SIM translation stage pos (mm)	-190.132523	-190.1400660498719			
SIM translation stage offset (mm)	0	0.00754346686406393			
Observation start time	109586701.184000	109585690.99001			
Observation start date	2001-06-22T08:43:57	2001-06-22T08:28:10			
Observation end time	109625406.184000	109626457.8041			
Observation end date	2001-06-22T19:29:02	2001-06-22T19:47:37			
Read mode	TIMED	TIMED			

## 2.3 Aspect





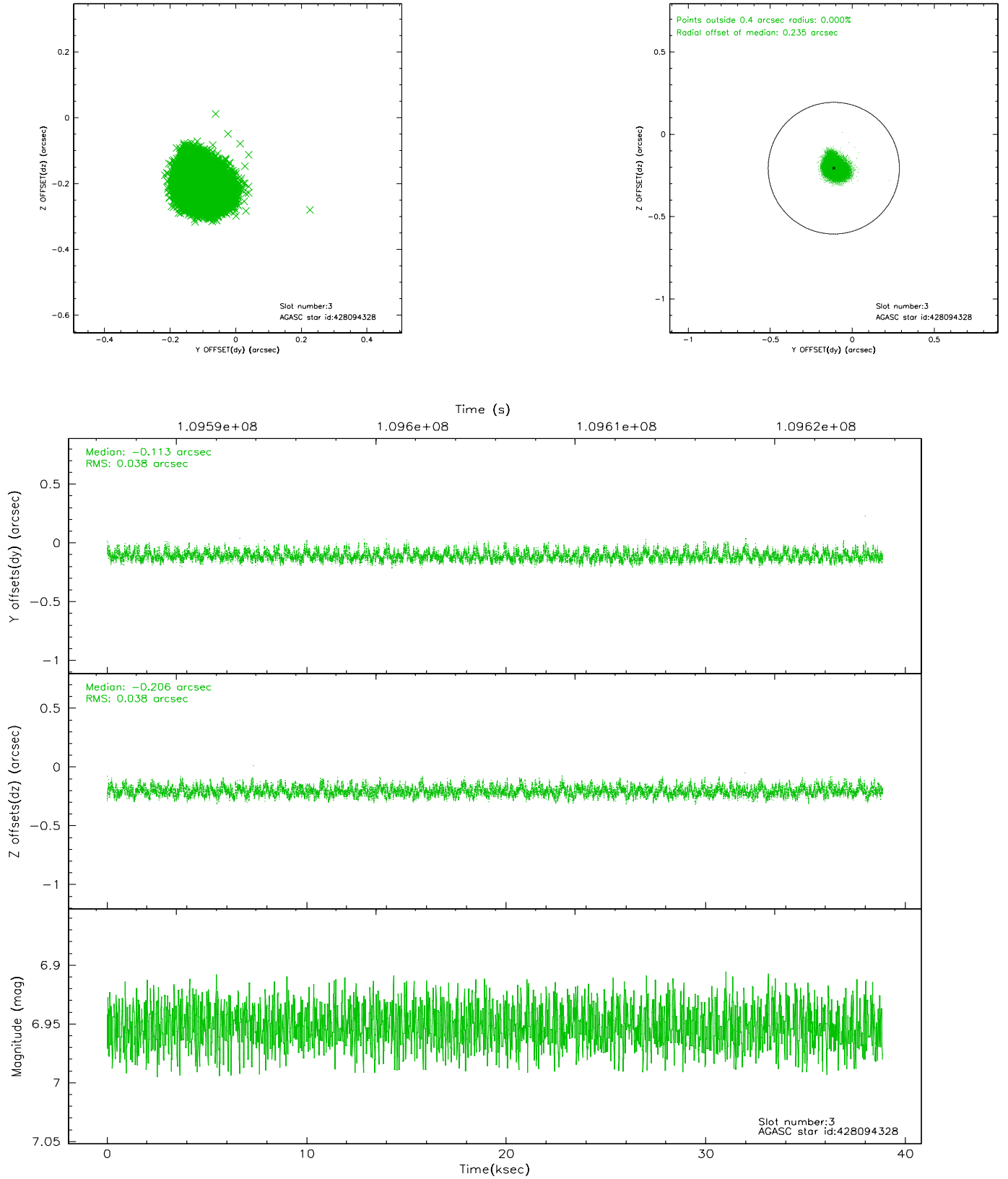
### Slot Statistics

slot	status	id	mag	n_pts	med_dy	med_dz	dr1	dr2	ra	dec	mean_y	mean_z
0	FID	ACIS-S-2	7.11	9475	-0.001	0.018	0.010	0.026	0.000000	0.000000	-755.16	-1728.10
1	FID	ACIS-S-4	7.19	9476	-0.088	-0.004	0.011	0.028	0.000000	0.000000	2158.02	180.36
2	FID	ACIS-S-5	7.24	9476	0.059	-0.005	0.009	0.016	0.000000	0.000000	-1807.92	174.03
3	GUIDE	428094328	6.95	18954	-0.113	-0.206	0.057	0.091	12.405038	47.763935	1022.92	1418.63
4	GUIDE	428093152	9.07	18952	-0.106	0.080	0.067	0.109	13.445574	47.996229	1493.81	-1186.78
5	GUIDE	428090984	8.97	18948	-0.038	0.076	0.069	0.113	13.818273	47.795721	658.80	-1982.48
6	GUIDE	428084960	8.95	18945	0.179	0.017	0.074	0.121	13.234592	47.098570	-1637.02	-237.13
7	GUIDE	428093736	8.99	18945	0.072	0.031	0.069	0.114	13.229736	47.774096	772.93	-561.30

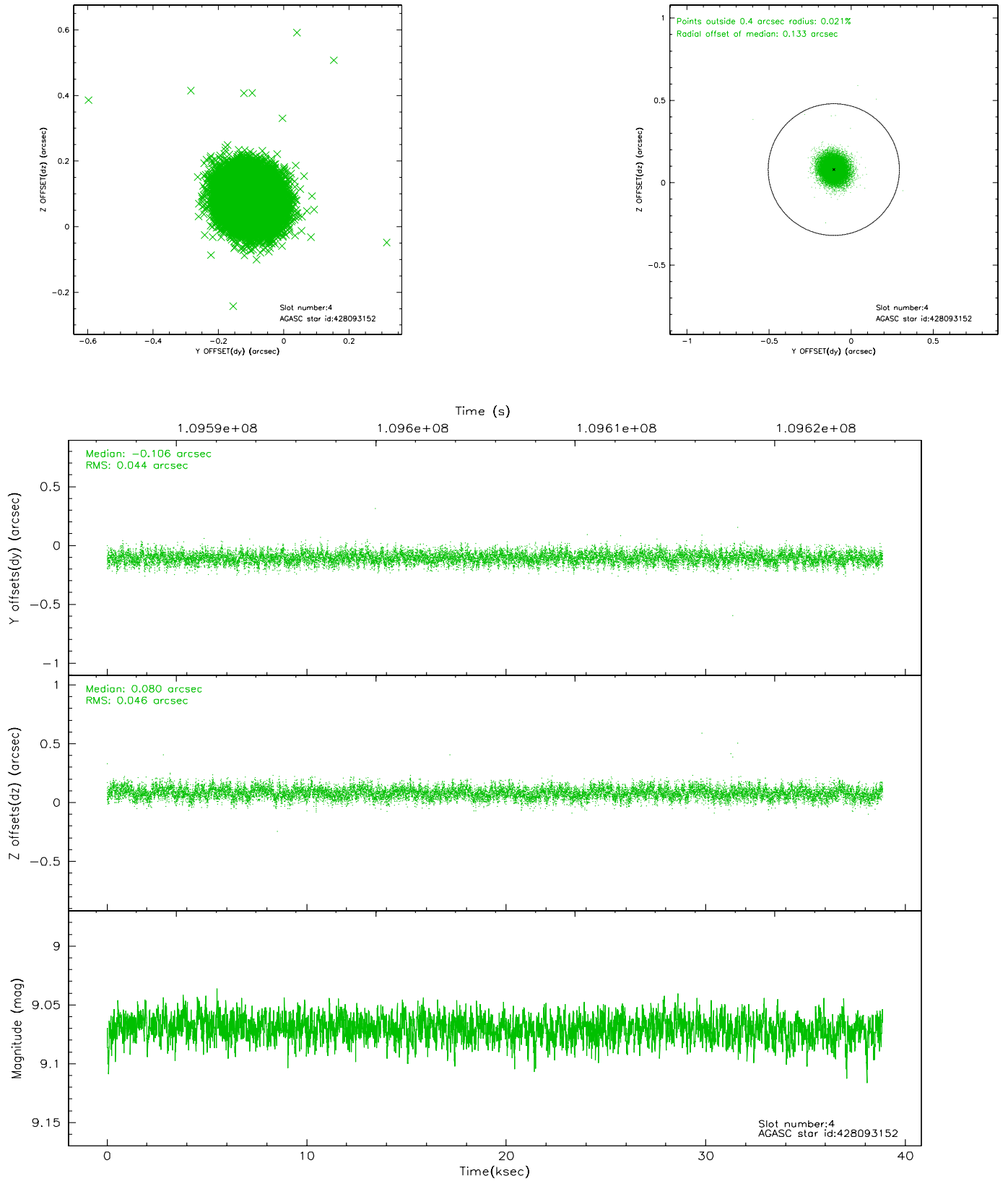


## 2.4 Star Slots

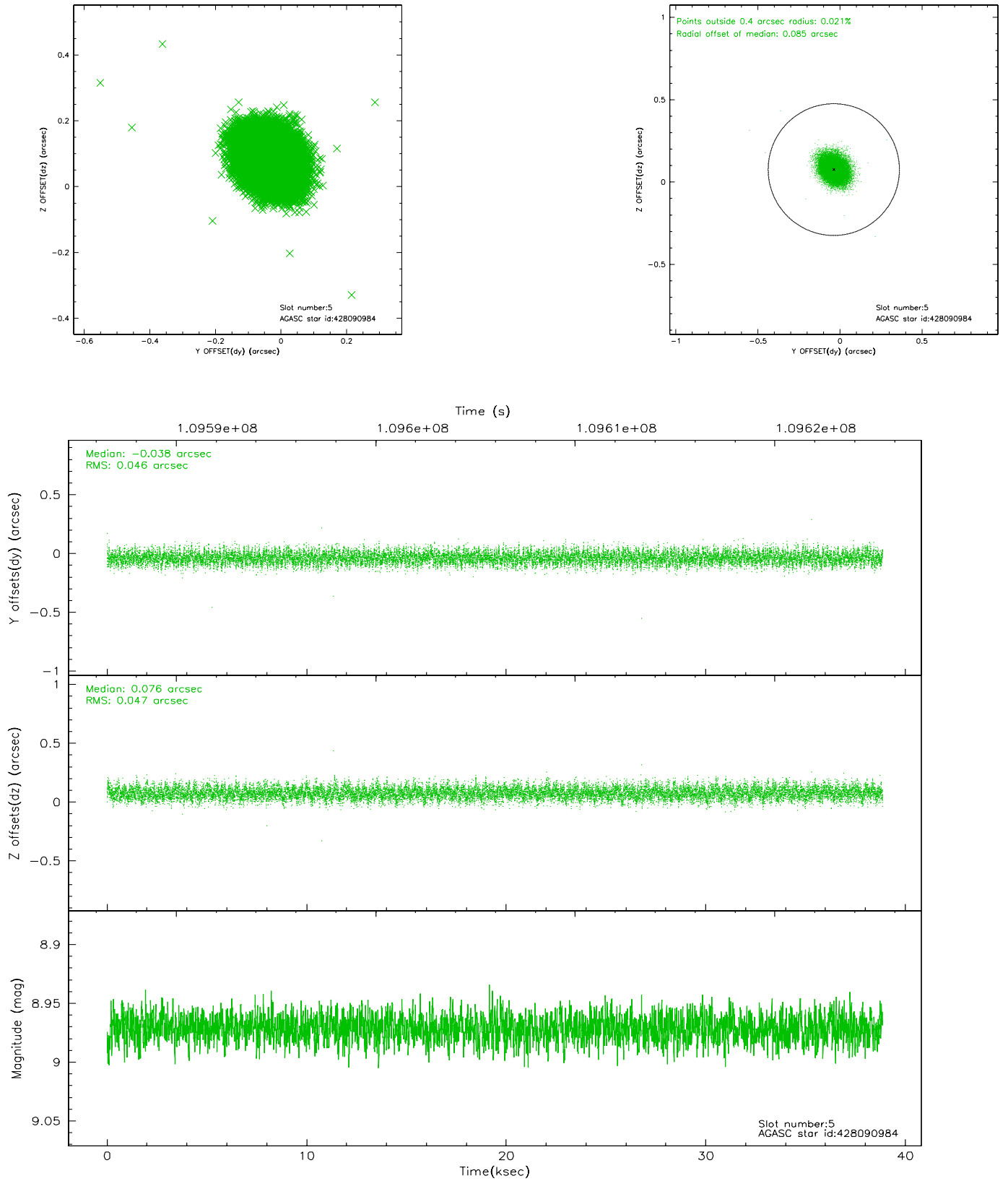
### 2.4.1 Slot 3



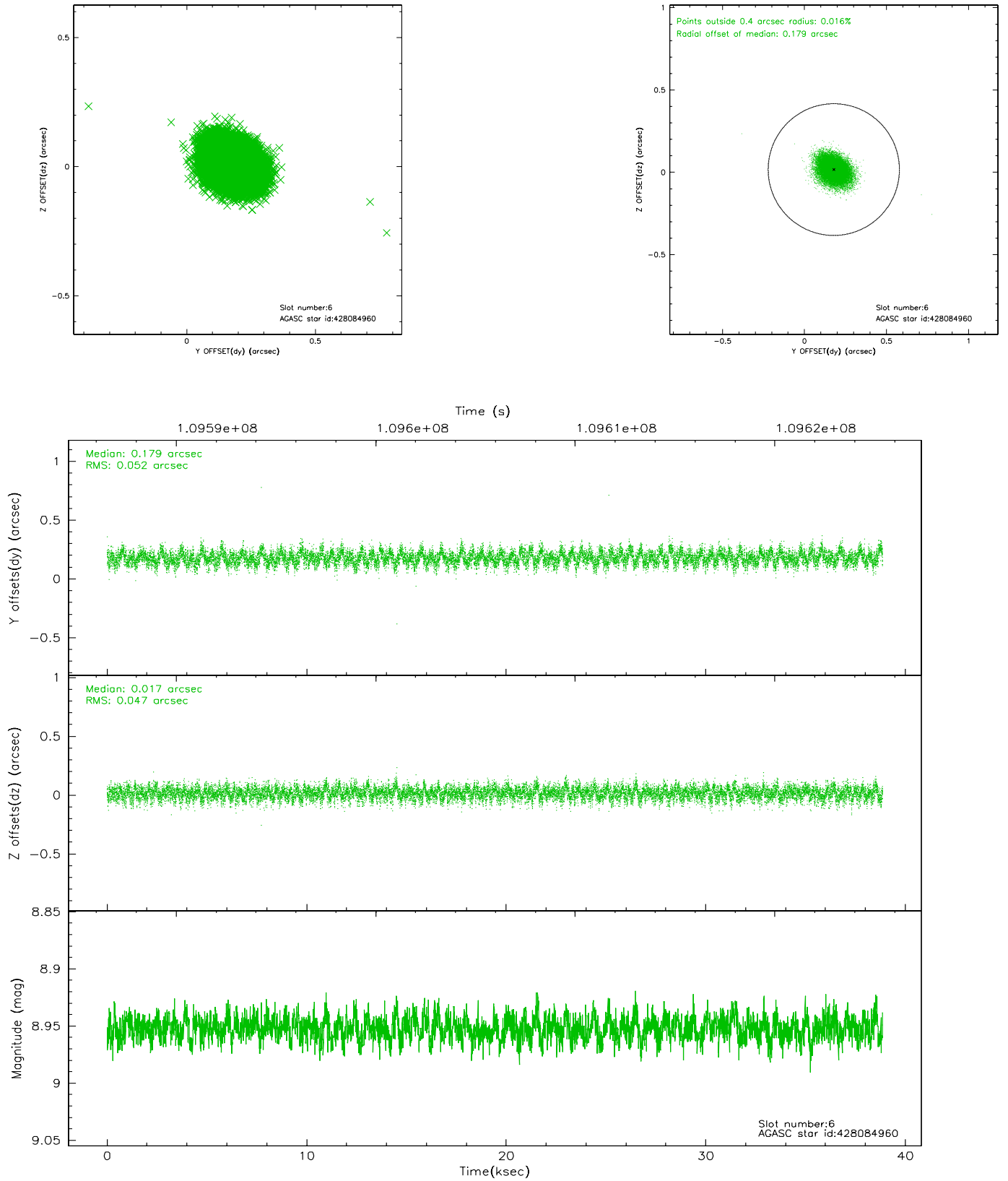
## 2.4.2 Slot 4



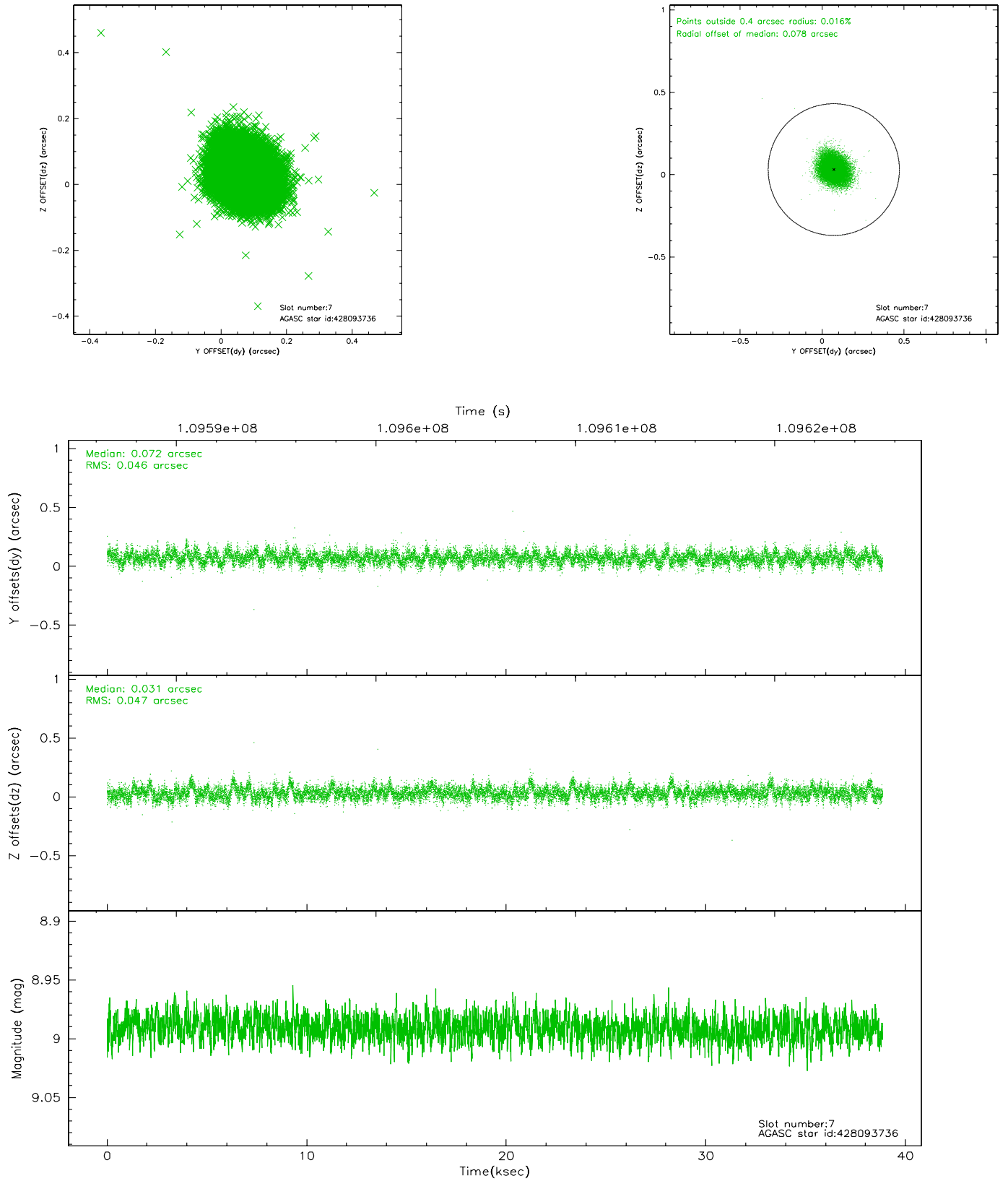
### 2.4.3 Slot 5



## 2.4.4 Slot 6

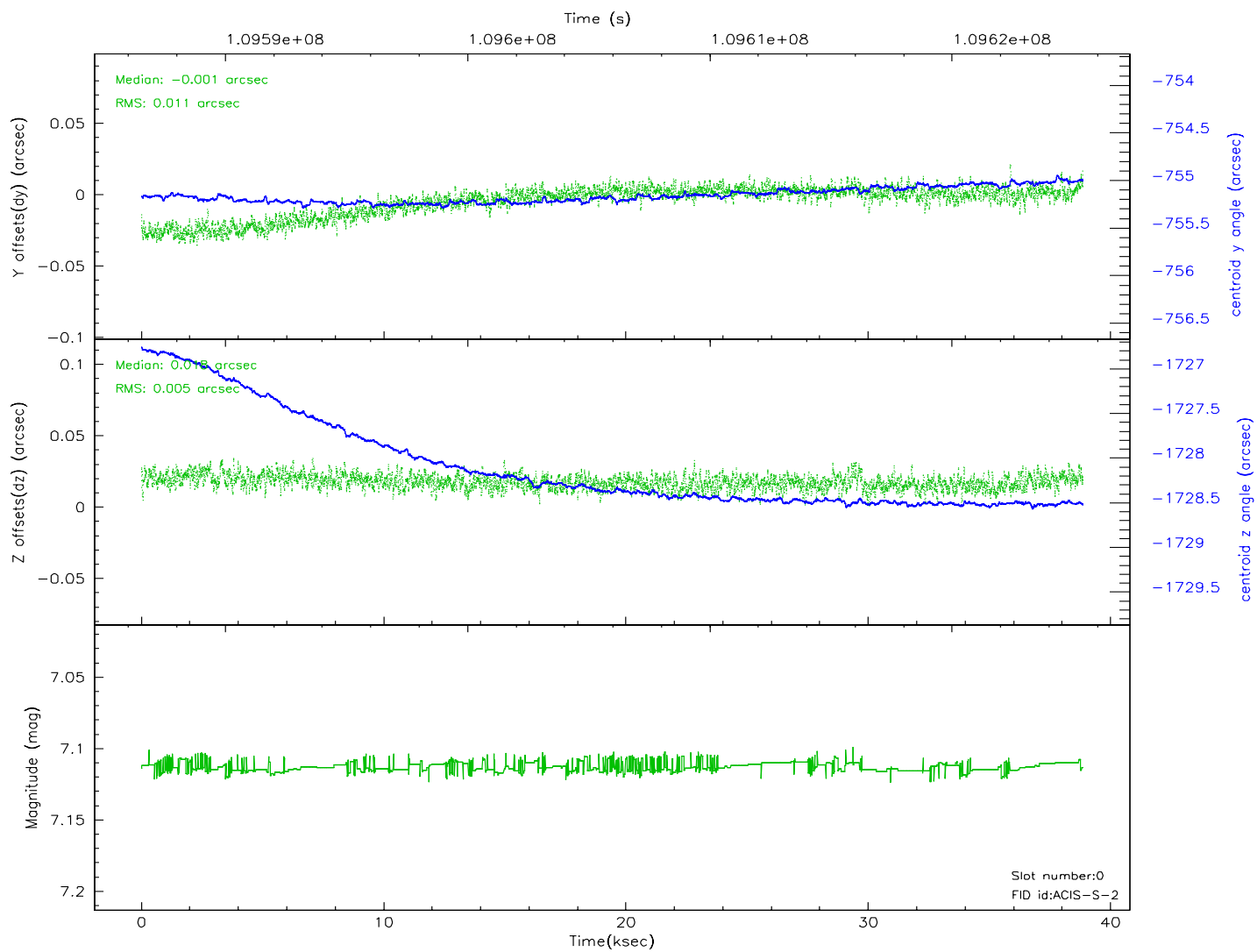
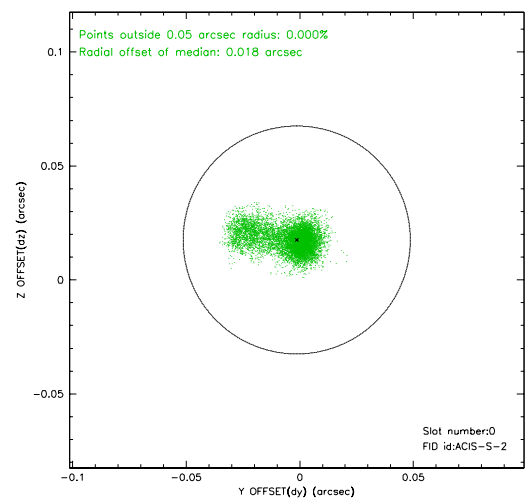
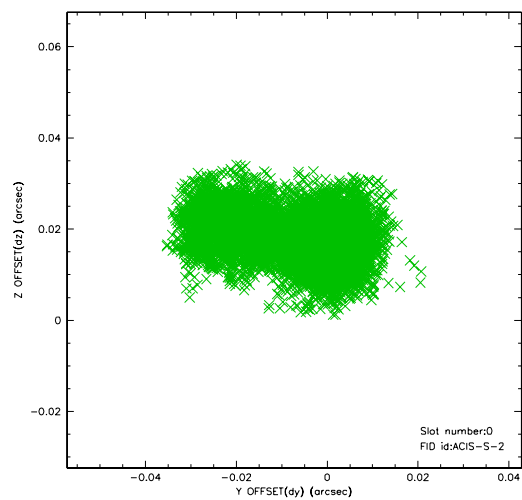


## 2.4.5 Slot 7

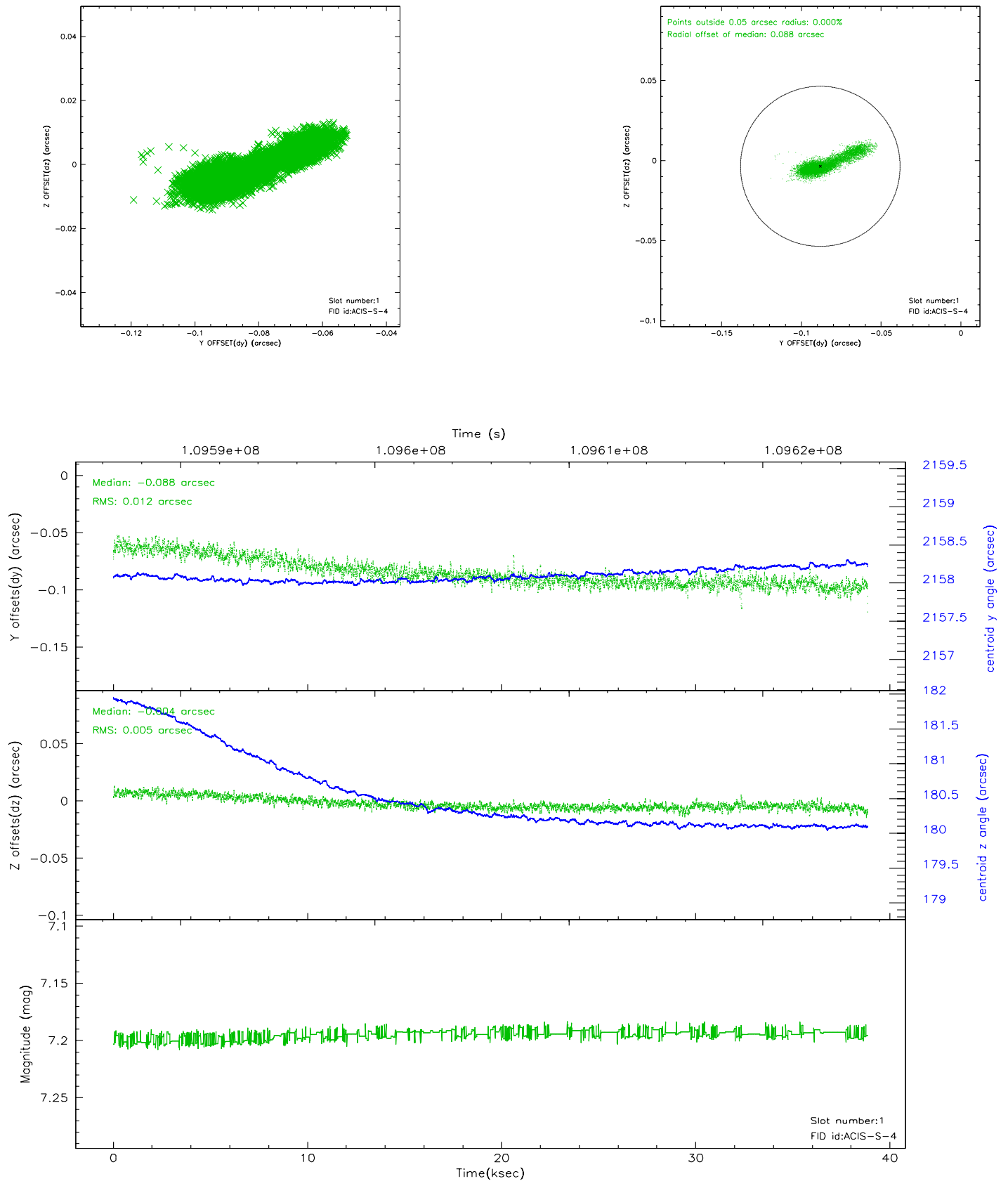


## 2.5 FID Slots

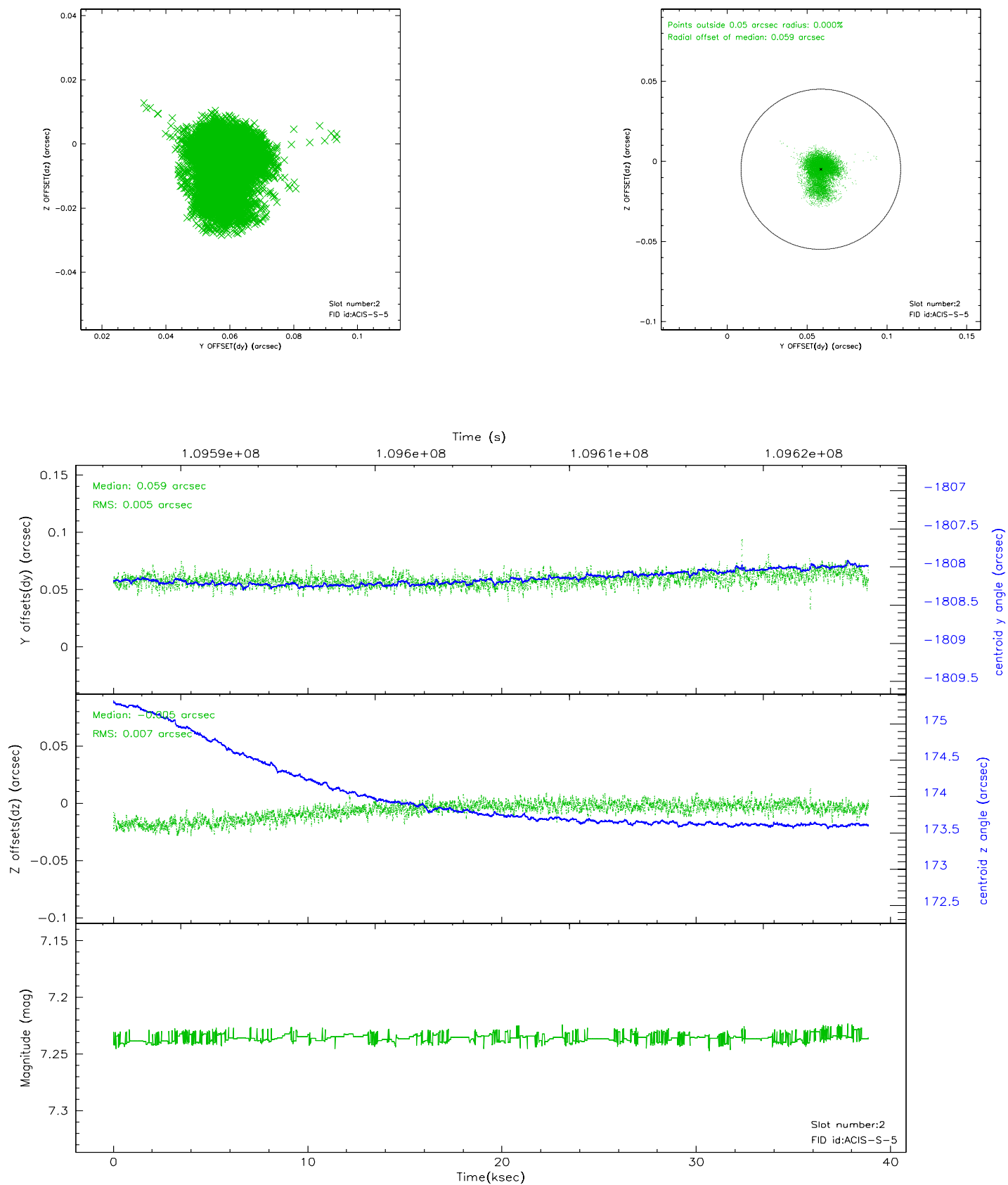
### 2.5.1 Slot 0



## 2.5.2 Slot 1

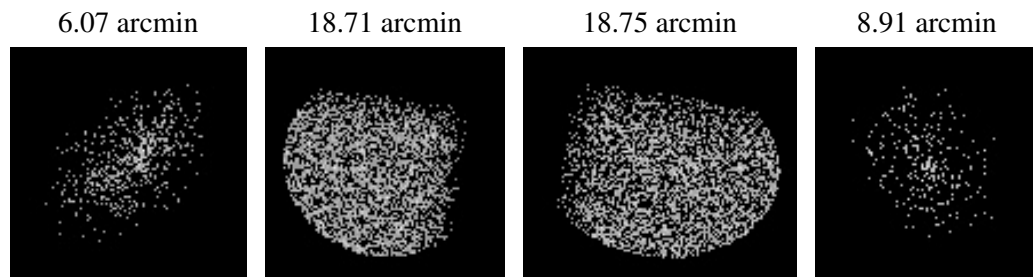


### 2.5.3 Slot 2





### 3 Point Sources



## A Summary

### A.1 Status

V&V Scientist	Beth Sundheim
V&V Date (YYYY-MM-DD)	2006.12.08
V&V Edition	1
V&V Disposition and Status	OK
V&V Charge Time	38.748

### A.2 Comments