

V&V Reference Report

L2 ASCDS Version : 7.6.9

Observation 1955 - L2 Version 001
Chandra X-Ray Center

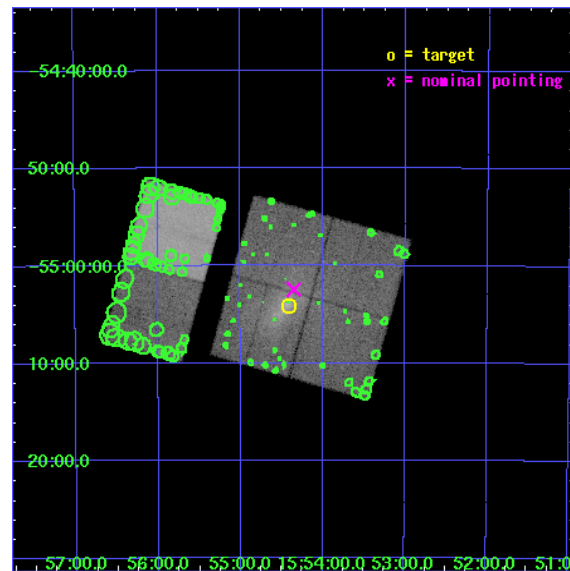
L2 Processing Date : Dec 14 2006

Contents

1	Front	2
2	OBI	3
2.1	OBI	3
2.1.1	Images	3
2.1.2	Bias	3
2.1.3	Parameters	4
2.1.4	Events	4
2.2	Compared Parameters	5
2.3	Aspect	6
2.4	Star Slots	9
2.4.1	Slot 3	9
2.4.2	Slot 4	10
2.4.3	Slot 5	11
2.4.4	Slot 6	12
2.4.5	Slot 7	13
2.5	FID Slots	14
2.5.1	Slot 0	14
2.5.2	Slot 1	15
2.5.3	Slot 2	16
3	Point Sources	17
A	Summary	18
A.1	Status	18
A.2	Comments	18

1 Front

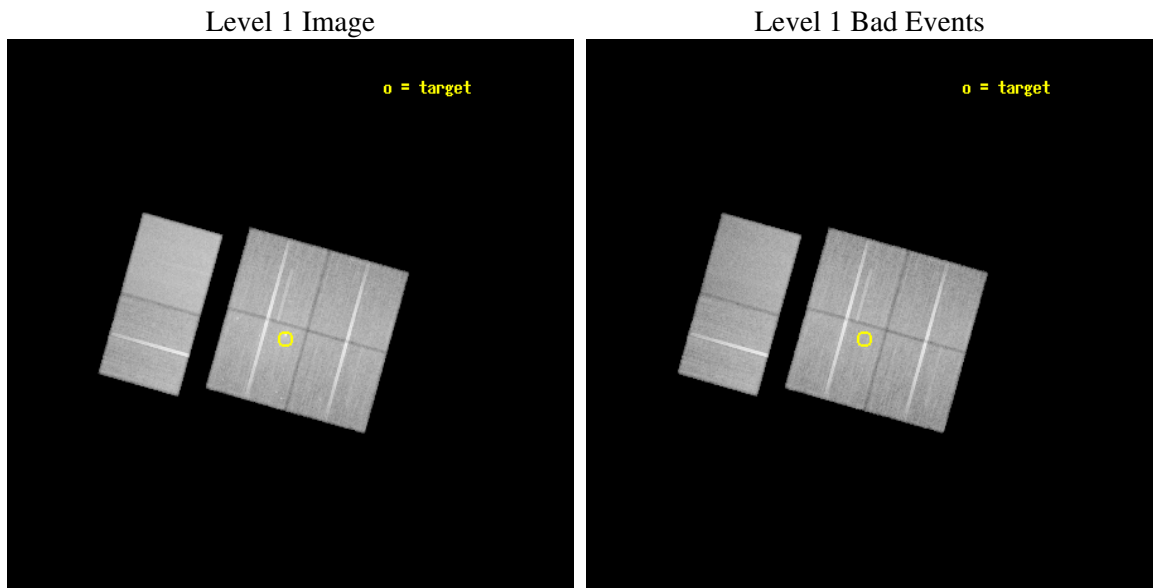
seq_num	500132
obs_id	1955
title	UNCOVERING THE YOUNG NEUTRON STAR IN G327.1-1.1
observer	Dr. Patrick Slane
object	G327.1-1.1
dtcycle	0
cycle	P
ra_targ	238.604167
dec_targ	-55.068333
ra_nom	238.58756826997
dec_nom	-55.040894329786
roll_nom	285.67115657688
revision	2
ontime	49945.559076279
liveltime	49313.11833365
ontime0	49945.559056357
ontime1	49948.800046518
ontime2	49945.559076279
ontime3	49948.800046518
ontime6	49948.800046518
ontime7	49948.800046518
l2events	366725



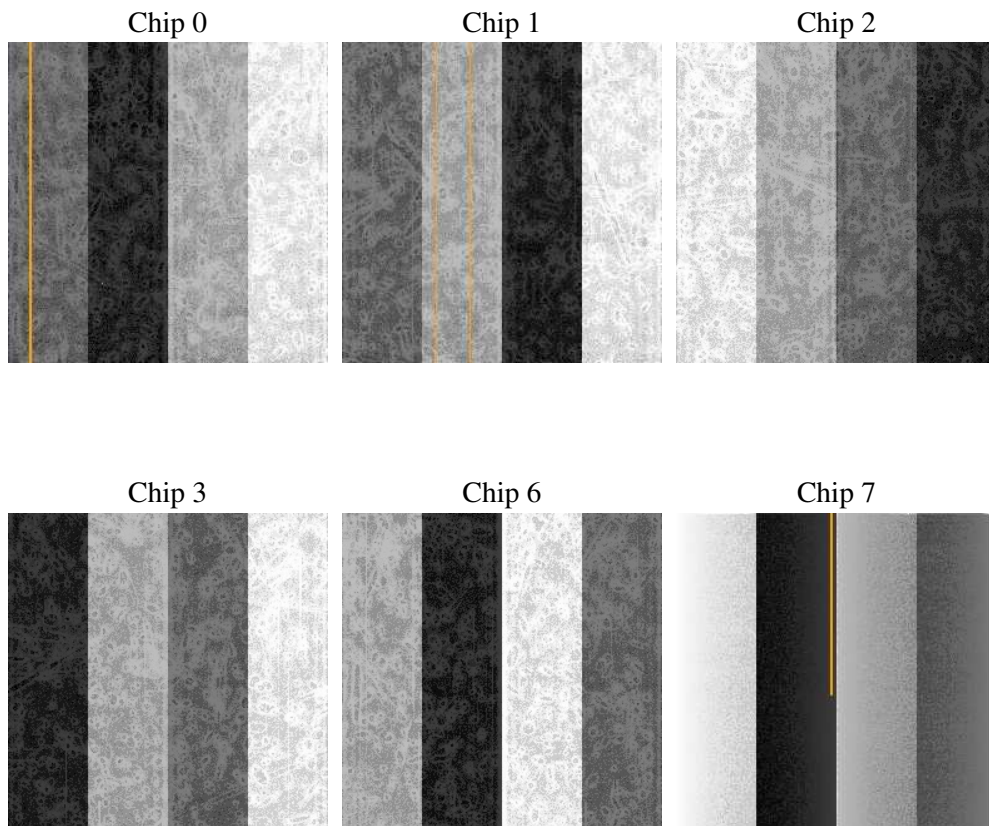
2 OBI

2.1 OBI

2.1.1 Images



2.1.2 Bias



2.1.3 Parameters

obi_num	0
ascdsver	7.6.9
caldsver	3.2.4
date	2006-12-14T10:16:04
revision	2

sched_exp_time	50000.000000
ontime	49950.309383526
ontime0	49950.309363604
ontime1	49953.550353765
ontime2	49950.309383526
ontime3	49953.550353765
ontime6	49953.550353765
ontime7	49953.550353765
l1events	2128393

2.1.4 Events

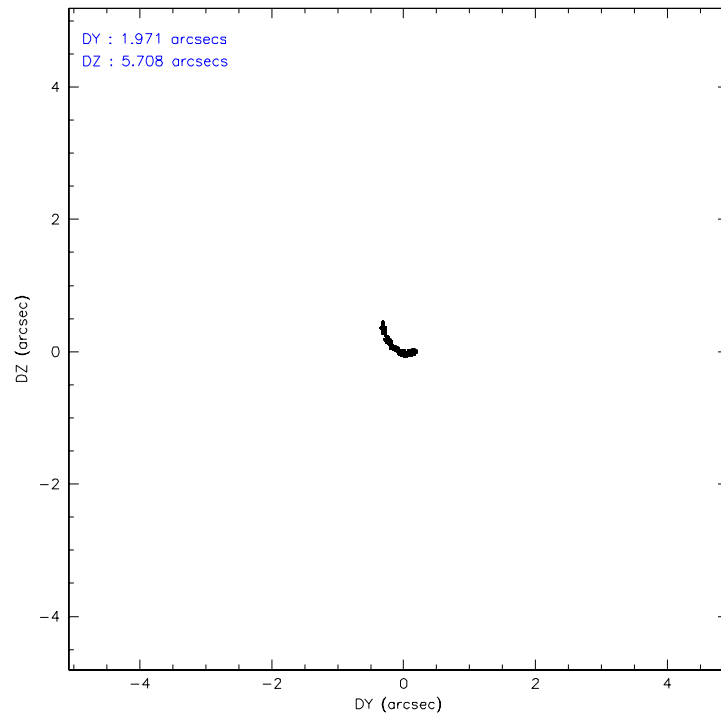
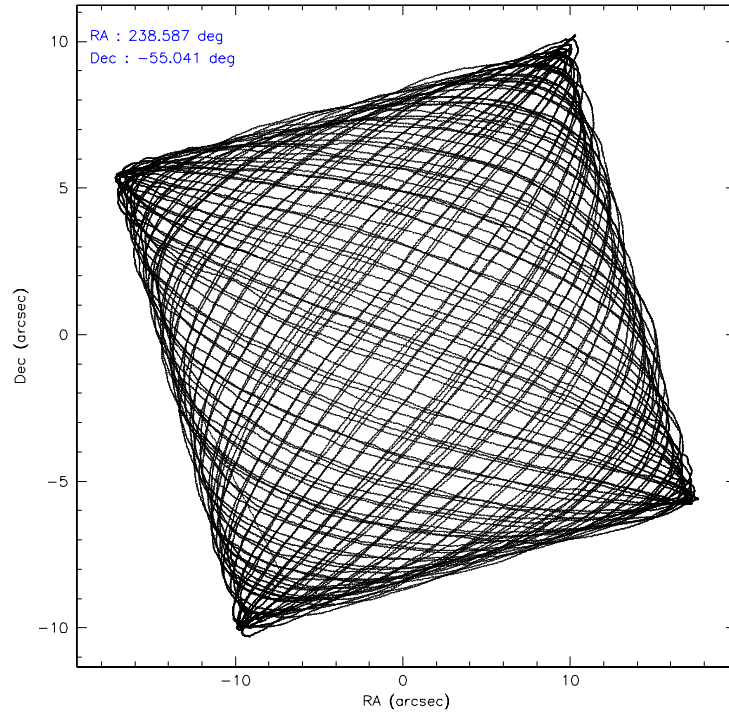
	ccd 0	ccd 1	ccd 2	ccd 3	ccd 6	ccd 7
level 1 events	310370	318578	364224	345222	354912	435087
rejected events	266979	275151	303821	301173	313928	266641
rejected %	86%	86%	83%	87%	88%	61%

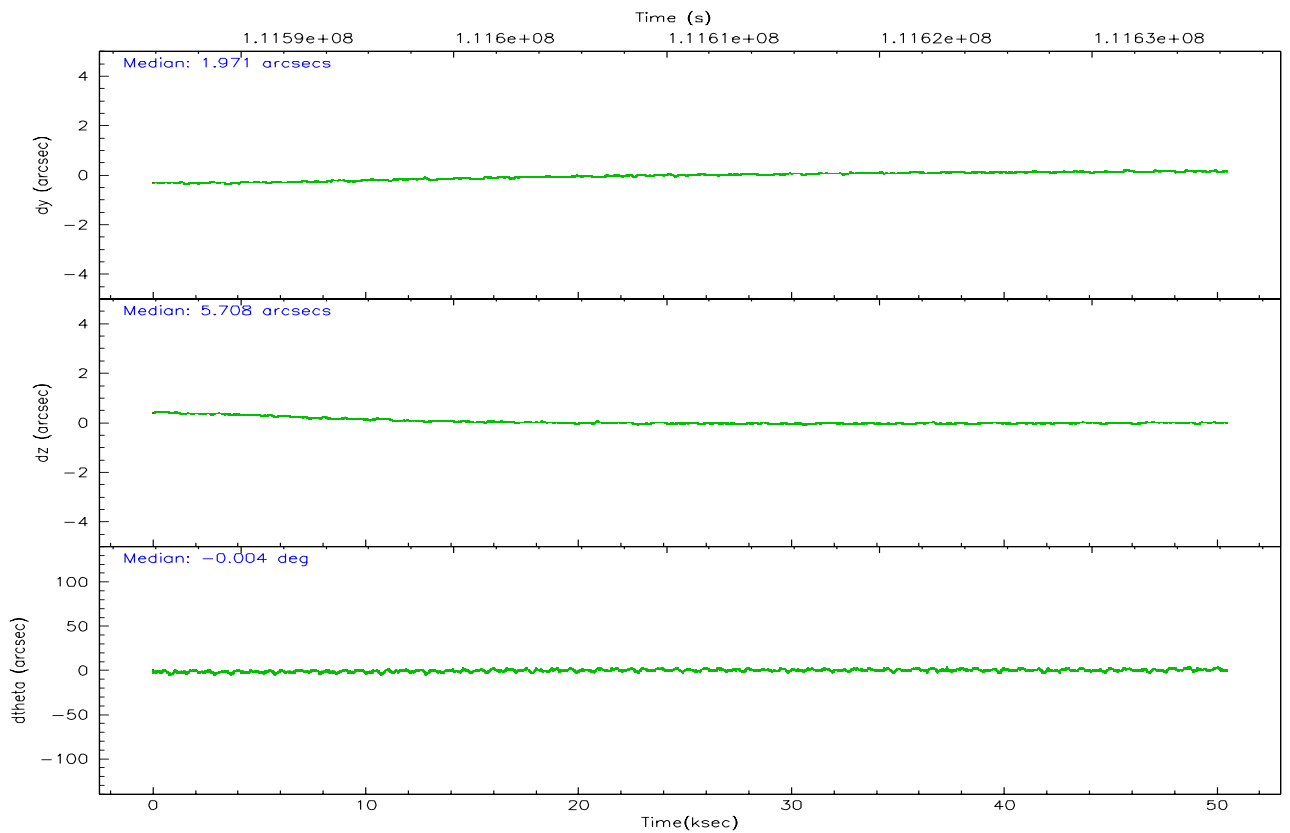
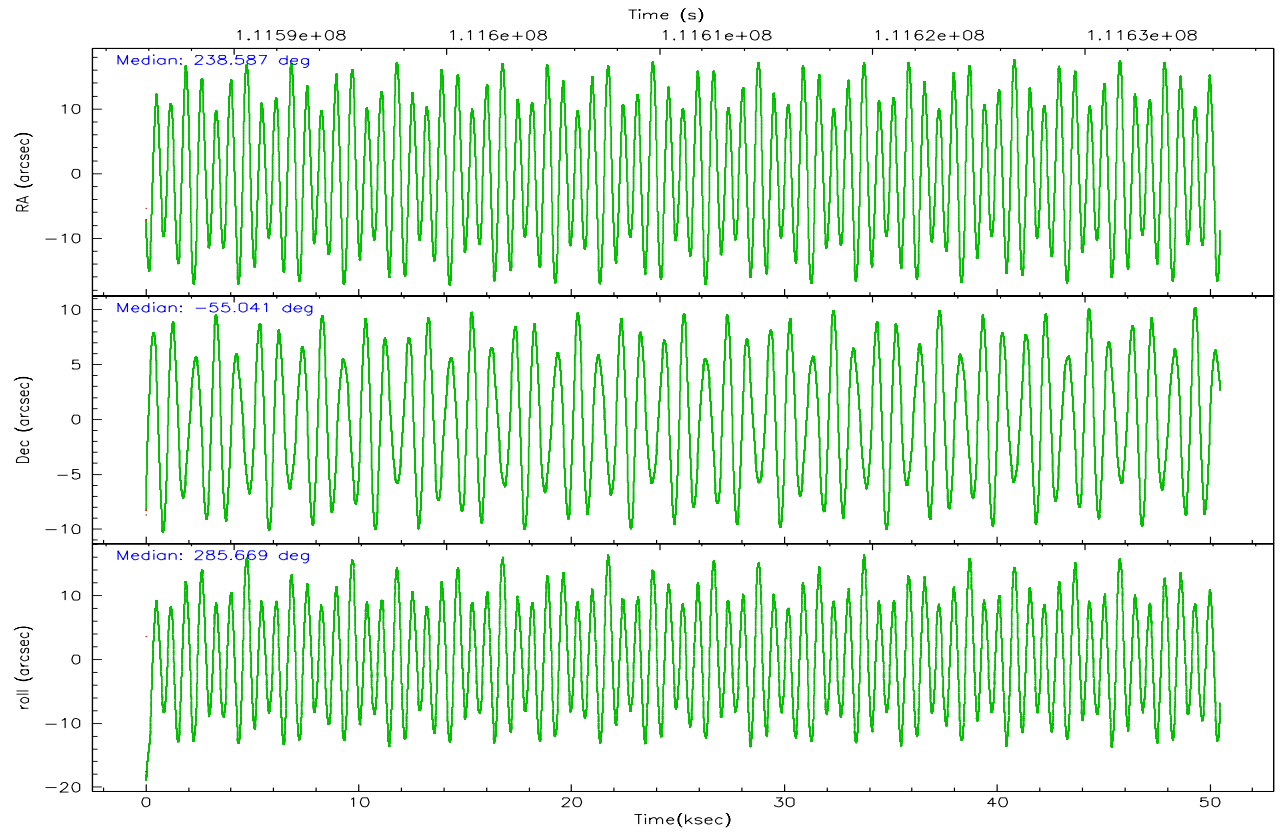
	ccd 0	ccd 1	ccd 2	ccd 3	ccd 6	ccd 7
grade 0 events	20160	18608	33494	21213	17606	10647
	6%	5%	9%	6%	4%	2%
grade 1 events	172	161	263	191	183	294
	0%	0%	0%	0%	0%	0%
grade 2 events	8604	8586	10710	8182	7865	41396
	2%	2%	2%	2%	2%	9%
grade 3 events	4016	4325	4452	3931	3952	9318
	1%	1%	1%	1%	1%	2%
grade 4 events	3774	4281	4432	3842	3816	9000
	1%	1%	1%	1%	1%	2%
grade 5 events	11947	12999	11420	12908	14514	29301
	3%	4%	3%	3%	4%	6%
grade 6 events	6840	7631	7318	6884	7747	98097
	2%	2%	2%	1%	2%	22%
grade 7 events	254857	261987	292135	288071	299229	237034
	82%	82%	80%	83%	84%	54%

2.2 Compared Parameters

Parameter	Planned	Actual	Parameter	Planned	Actual
Instrument	ACIS	ACIS	Obspar format version number	6	6
Detector	ACIS-012367	ACIS-012367	Obspar file type	PREDICTED	ACTUAL
Grating	NONE	NONE	Obspar update status	NONE	UPDATED
Data mode	FAINT	FAINT	Number of optional ACIS chips dropped	0	0
Observation mode	POINTING	POINTING	On-chip summing requested	N	N
Pointing RA	238.553324	238.5875682699748	Subarray requested	NONE	NONE
Pointing Dec	-55.021745	-55.04089432978599	Alternating exposures requested	N	N
Pointing Roll	285.434407	285.6711565768808	Primary exposure time	0.000000	3.2
SIM focus pos (mm)	-0.782348	-0.7809083437167272			
SIM defocus (mm)	0	0.001439871863259334			
SIM translation stage pos (mm)	-229.592463	-229.5846445007452			
SIM translation stage offset (mm)	-4	-4.007808502184531			
Observation start time	111586341.184000	111585239.03064			
Observation start date	2001-07-15T12:11:17	2001-07-15T11:53:59			
Observation end time	111636341.184000	111636950.79517			
Observation end date	2001-07-16T02:04:37	2001-07-16T02:15:50			
Read mode	TIMED	TIMED			

2.3 Aspect



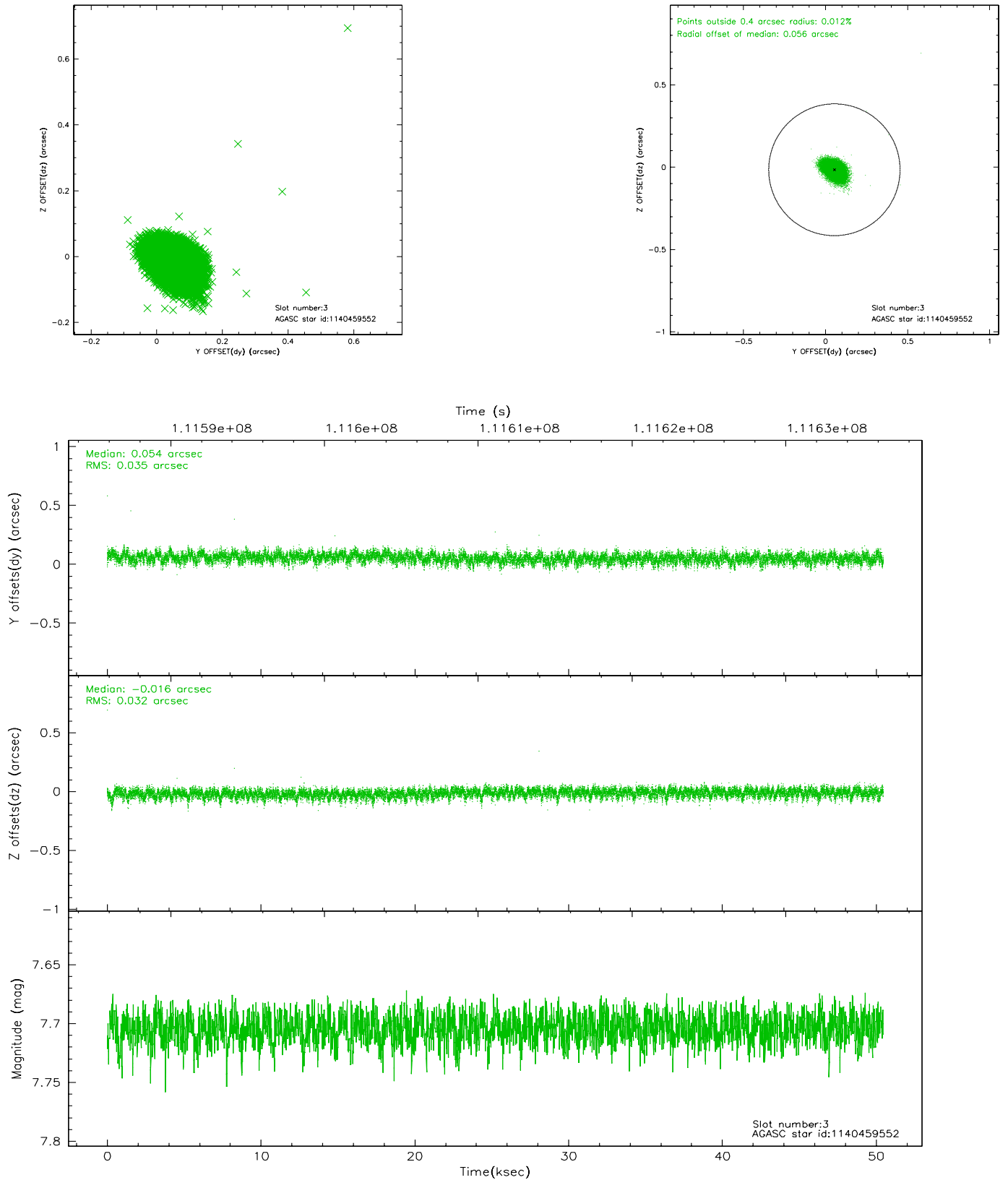


Slot Statistics

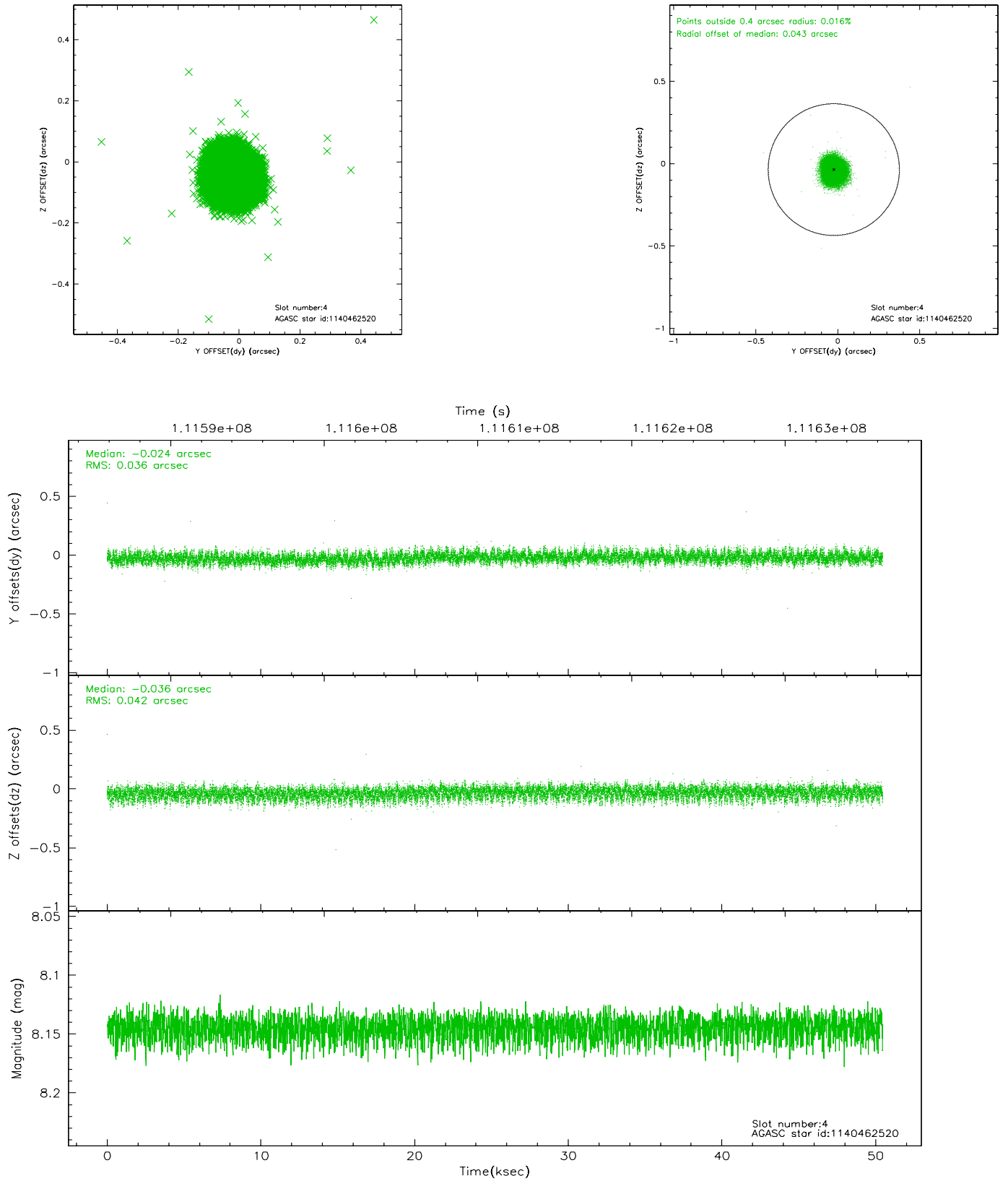
slot	status	id	mag	n_pts	med_dy	med_dz	dr1	dr2	ra	dec	mean_y	mean_z
0	FID	ACIS-I-3	7.42	12309	0.000	0.199	0.017	0.028	0.000000	0.000000	55.26	-1044.38
1	FID	ACIS-I-4	7.17	12307	-0.072	-0.077	0.016	0.026	0.000000	0.000000	2157.45	988.93
2	FID	ACIS-I-5	7.23	12311	-0.027	-0.052	0.012	0.022	0.000000	0.000000	-1810.26	986.19
3	GUIDE	1140459552	7.70	24622	0.054	-0.016	0.049	0.083	238.146760	-55.555714	1635.68	-1309.52
4	GUIDE	1140462520	8.15	24618	-0.024	-0.036	0.059	0.094	237.718666	-54.642458	-1768.30	-1314.93
5	GUIDE	1140468440	8.65	24614	0.051	0.117	0.070	0.113	239.579652	-55.544544	2385.87	1510.88
6	GUIDE	1140468888	8.97	24606	0.090	0.031	0.080	0.127	239.701194	-55.248351	1432.61	2049.08
7	GUIDE	1140458088	9.07	24615	-0.168	-0.093	0.075	0.119	237.318795	-54.593632	-2148.52	-2077.30

2.4 Star Slots

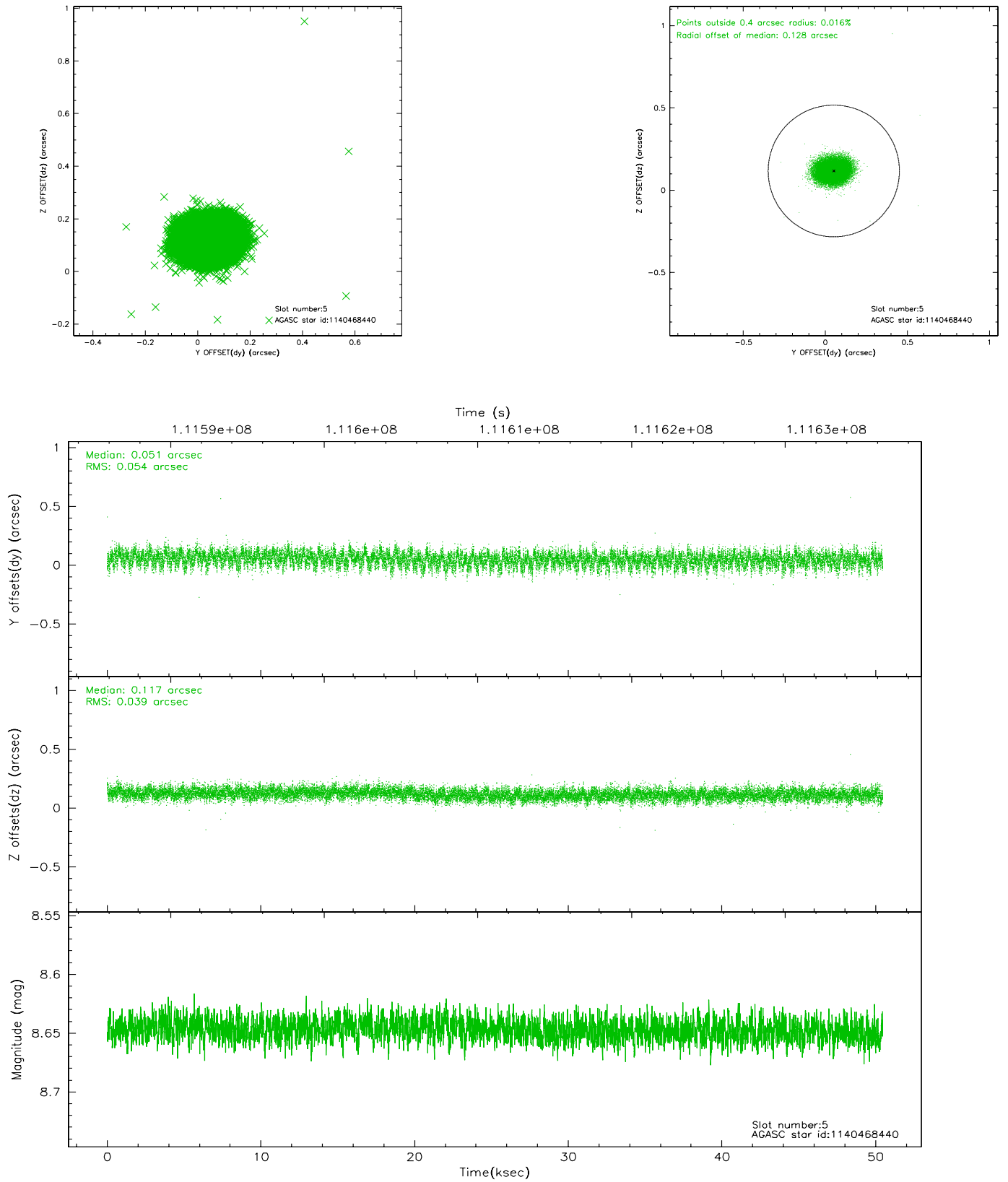
2.4.1 Slot 3



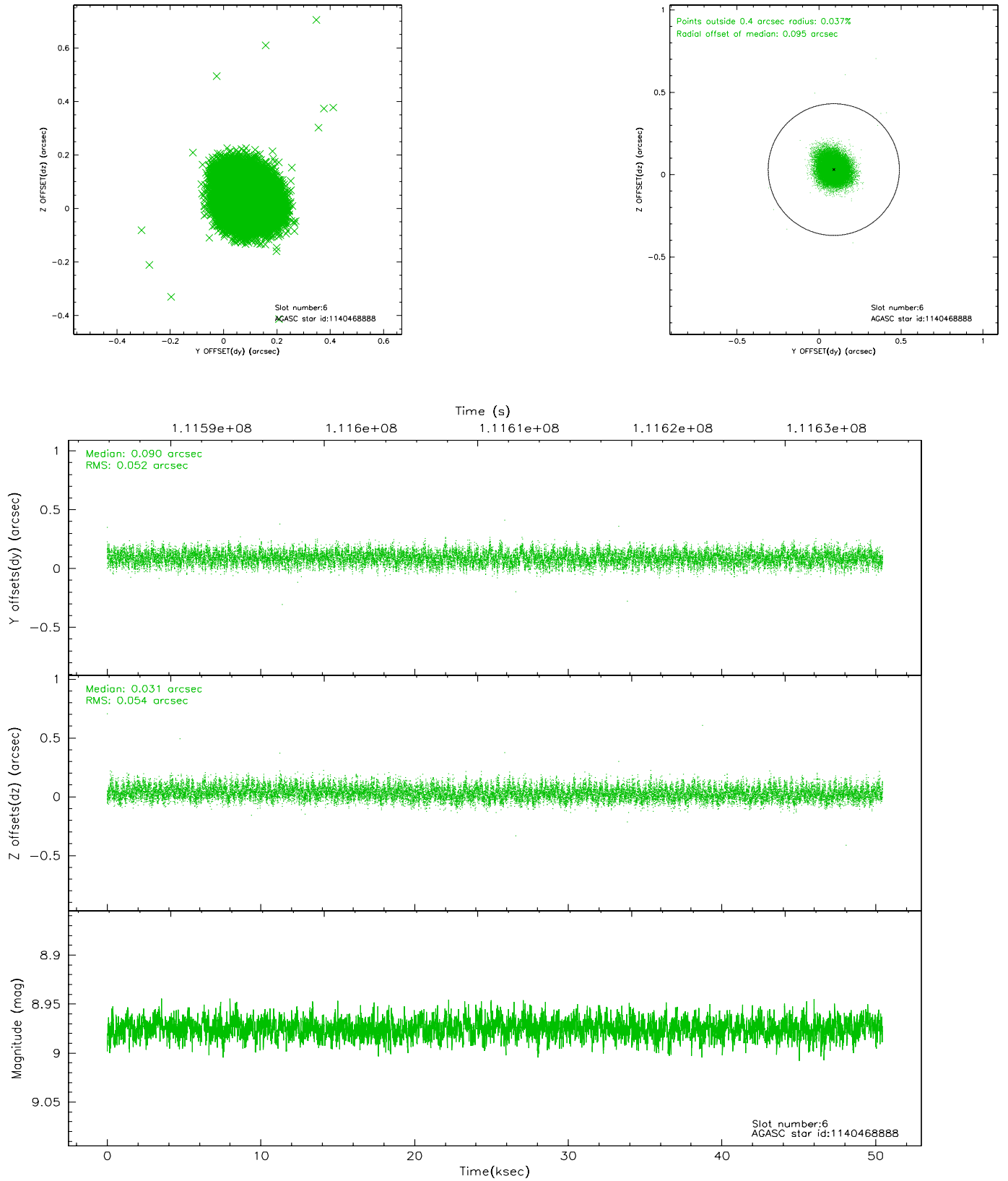
2.4.2 Slot 4



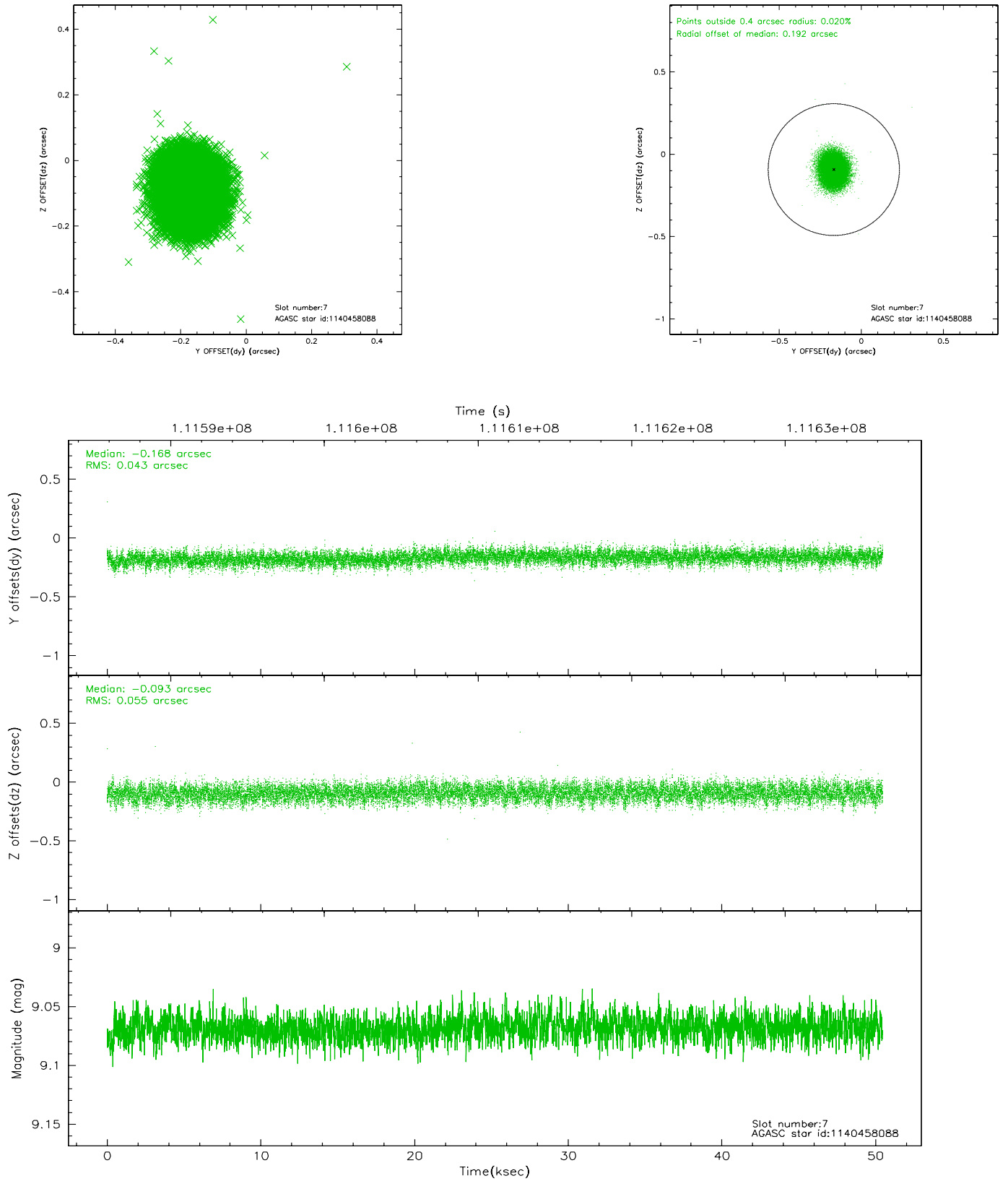
2.4.3 Slot 5



2.4.4 Slot 6

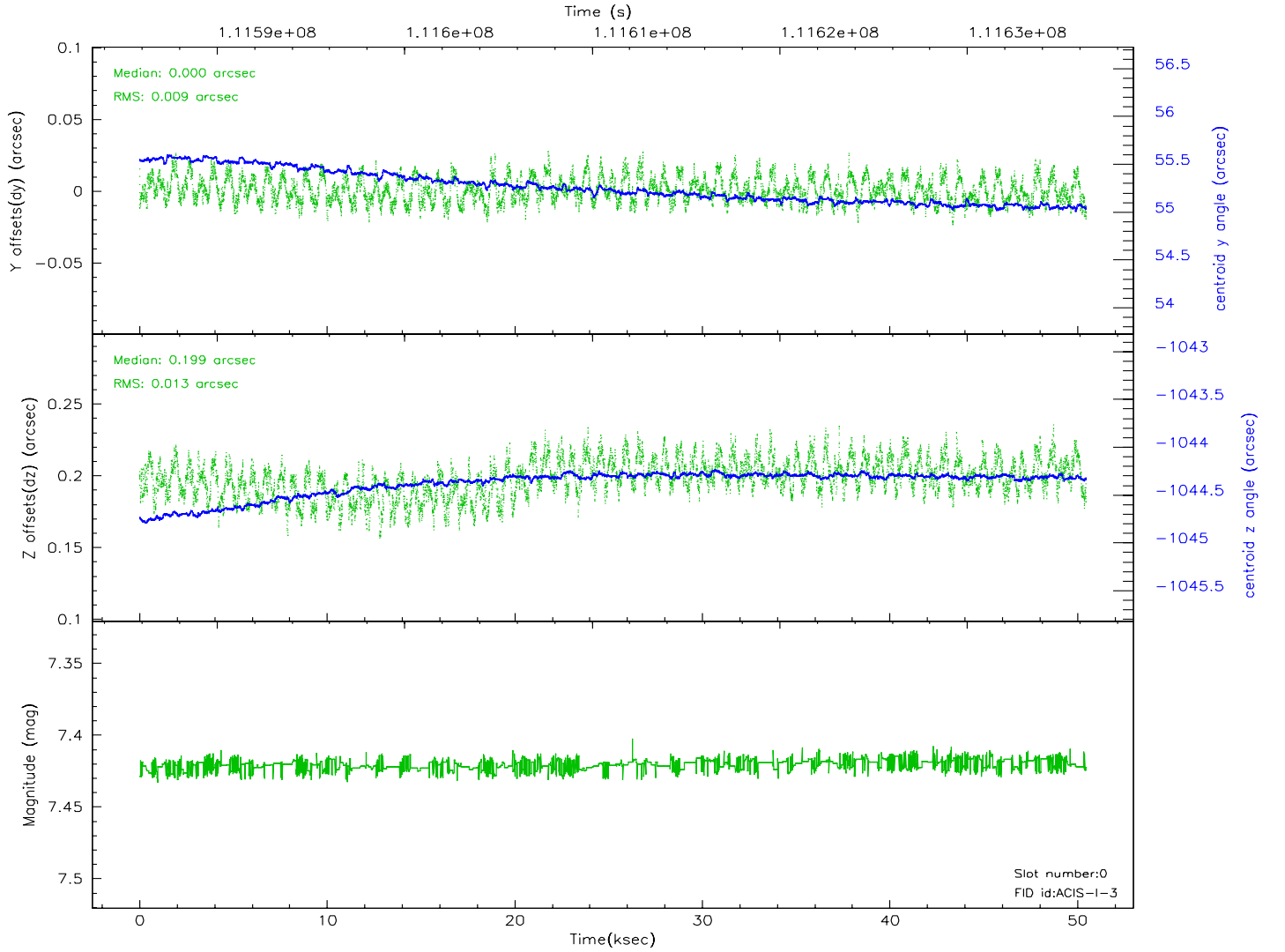
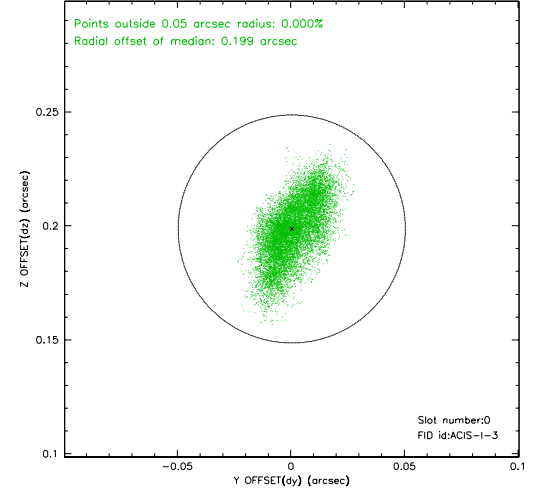
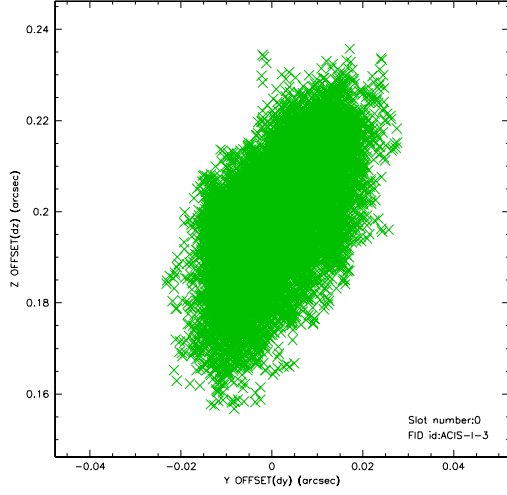


2.4.5 Slot 7

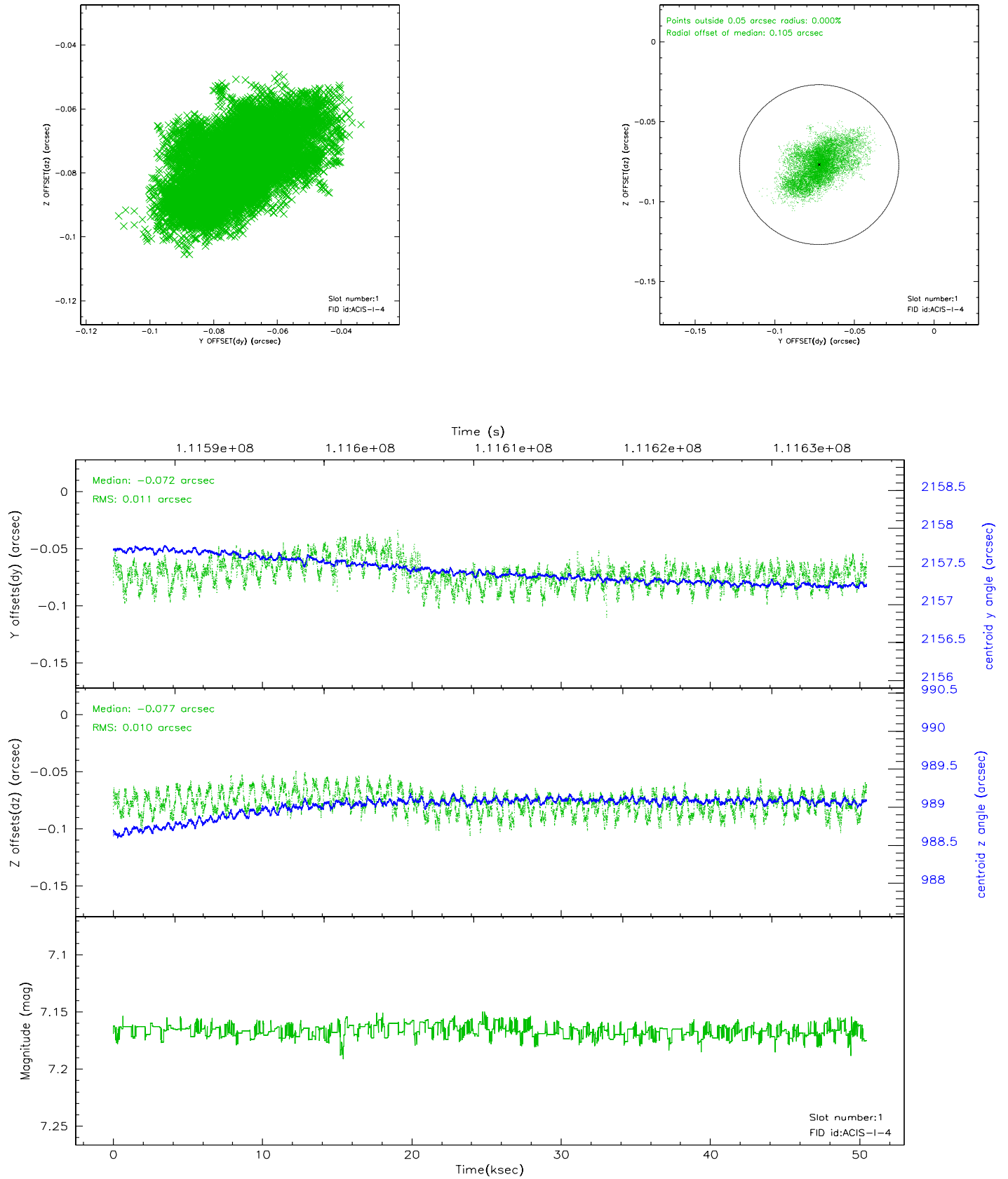


2.5 FID Slots

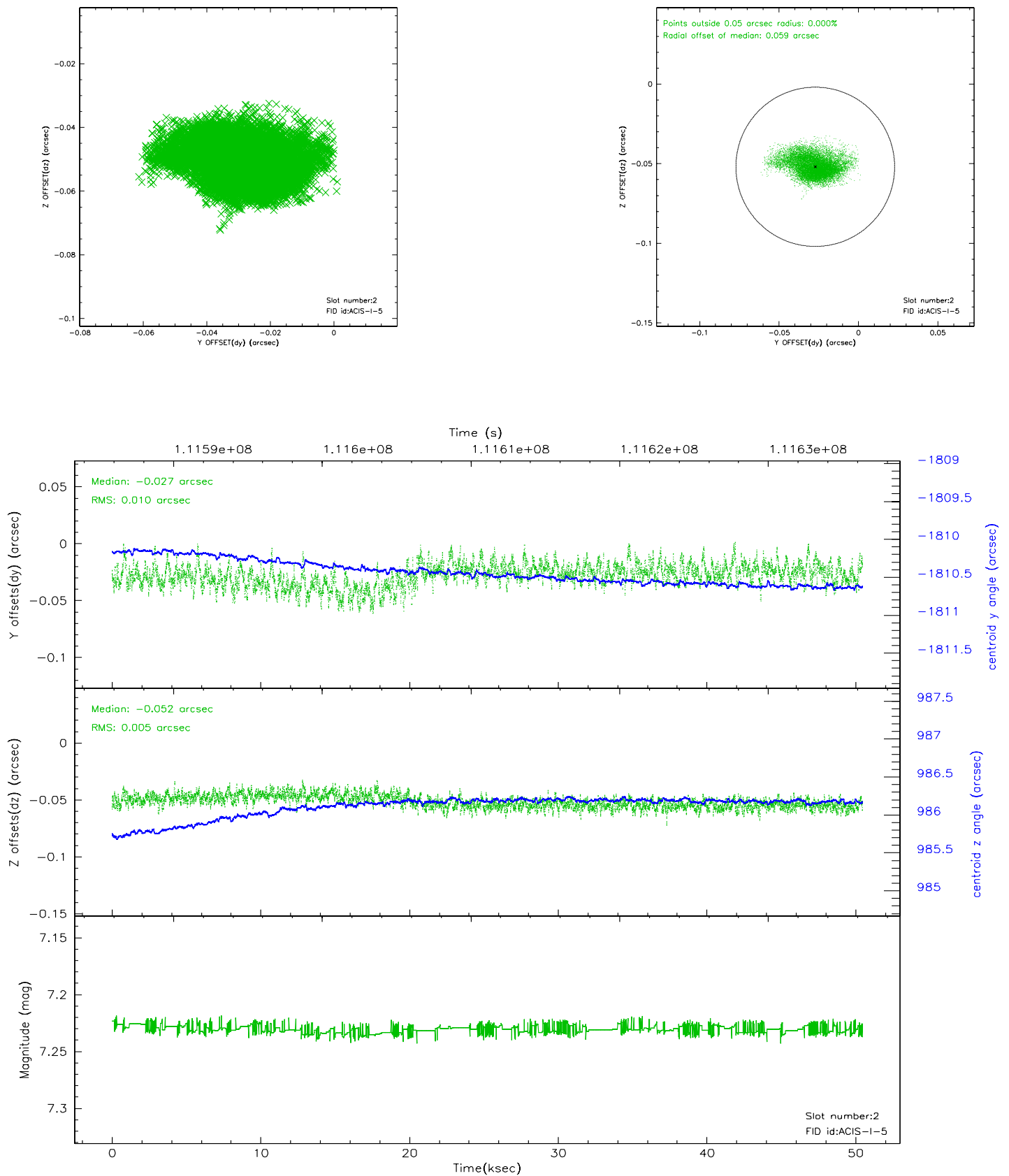
2.5.1 Slot 0



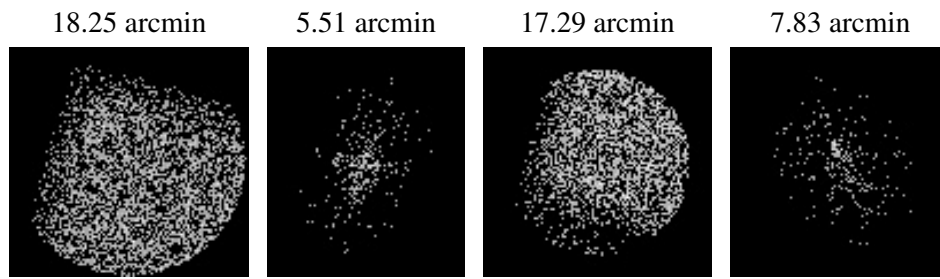
2.5.2 Slot 1



2.5.3 Slot 2



3 Point Sources



A Summary

A.1 Status

V&V Scientist	Jen Lauer
V&V Date (YYYY-MM-DD)	2006.12.14
V&V Edition	1
V&V Disposition and Status	OK
V&V Charge Time	49.948

A.2 Comments