

V&V Reference Report

L2 ASCDS Version : 8.4.5

Observation 1745 - L2 Version 6
Chandra X-Ray Center

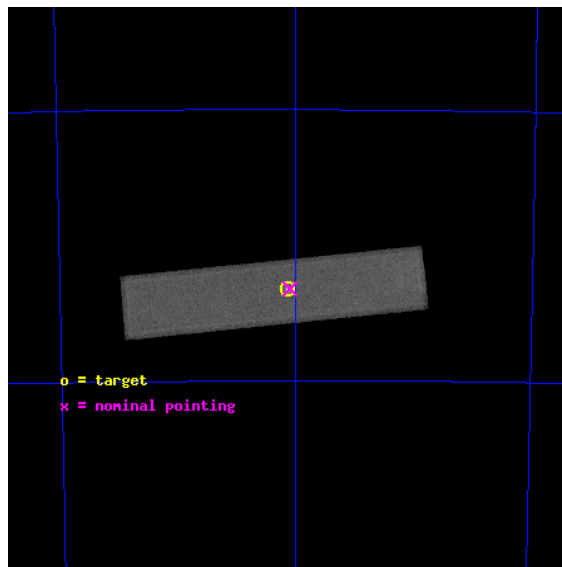
L2 Processing Date : Aug 29 2012

Contents

1	Front	2
2	OBI	3
2.1	OBI	3
2.1.1	Images	3
2.1.2	Parameters	4
2.1.3	Events	4
2.2	Compared Parameters	5
2.3	Aspect	6
2.4	Star Slots	9
2.4.1	Slot 3	9
2.4.2	Slot 4	10
2.4.3	Slot 5	11
2.4.4	Slot 6	12
2.4.5	Slot 7	13
2.5	FID Slots	14
2.5.1	Slot 0	14
2.5.2	Slot 1	15
2.5.3	Slot 2	16
A	Summary	17
A.1	Status	17
A.2	Comments	17

1 Front

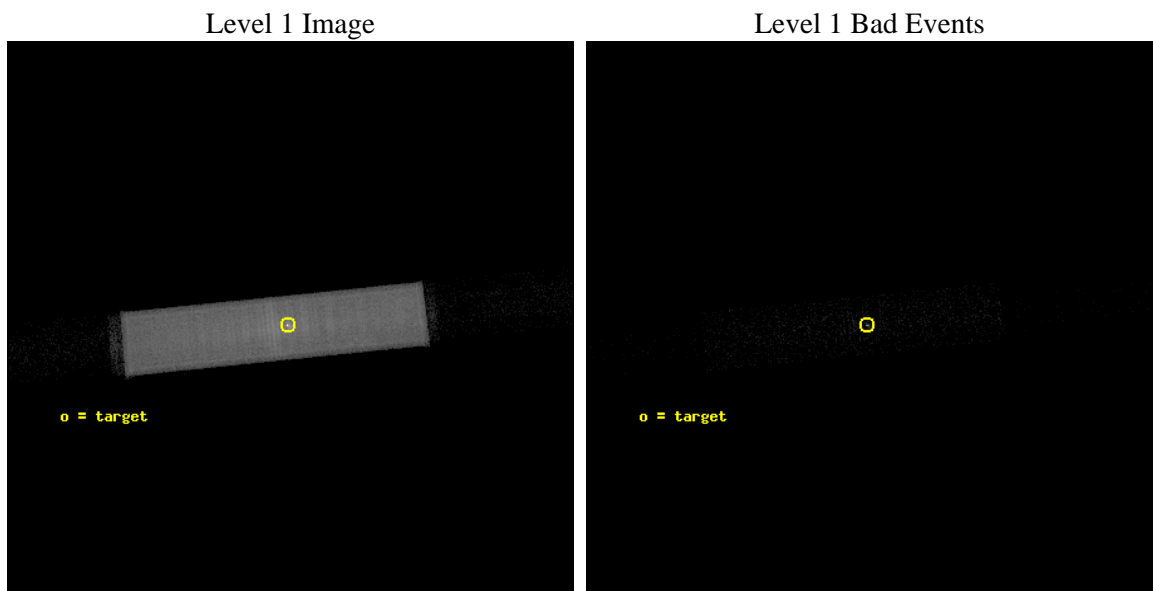
seq_num	590194	Sequence number
obs_id	1745	Observation id
title	VERIFICATION OF AXAF TIMING CAPABILITY	Proposal title
observer	Dr. CXC Calibration	Principal investigator
object	PSR B0540-69	Source name
ra_targ	85.04625	Observer's specified target RA [deg]
dec_targ	-69.332	Observer's specified target Dec [deg]
ra_nom	85.031684939755	Nominal RA [deg]
dec_nom	-69.331207729657	Nominal Dec [deg]
roll_nom	174.14408088833	Nominal Roll [deg]
revision	6	Processing version of data
ontime	6901.5815044343	[s]
livetime	6880.2189162865	Ontime multiplied by DTCOR
l2events	202930	Number of level 2 events



2 OBI

2.1 OBI

2.1.1 Images



2.1.2 Parameters

obi_num	0	Obi number	sched_exp_time	6760.000000	[s] Scheduled observation exposure time
ascdsver	8.4.5	Processing system revision	ontime	6901.5815044343	[s]
caldsver	4.5.1.1	 	l1events	342306	Number of level 1 events
date	2012-08-29T14:57:03	Date and time of file creation			
revision	5	Processing version of data			

2.1.3 Events

Level 1 Events

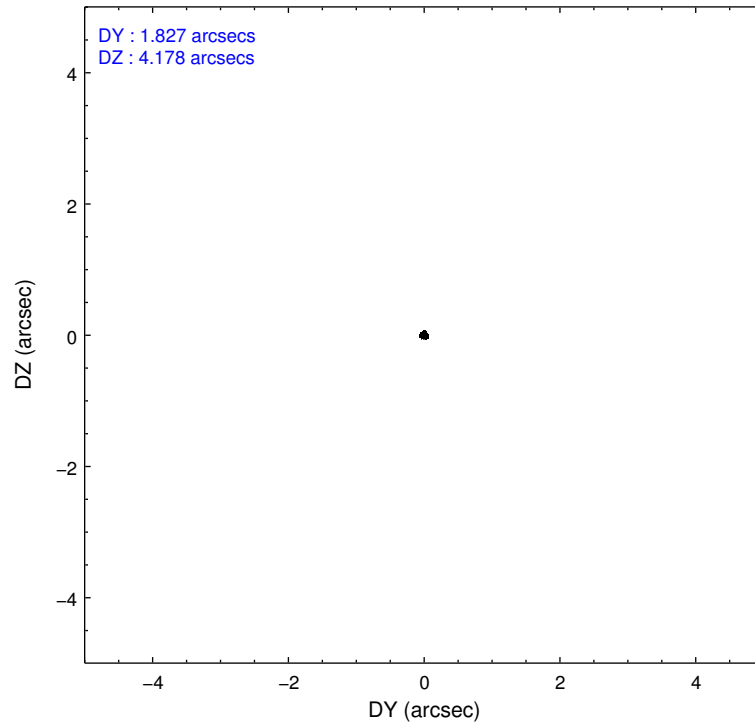
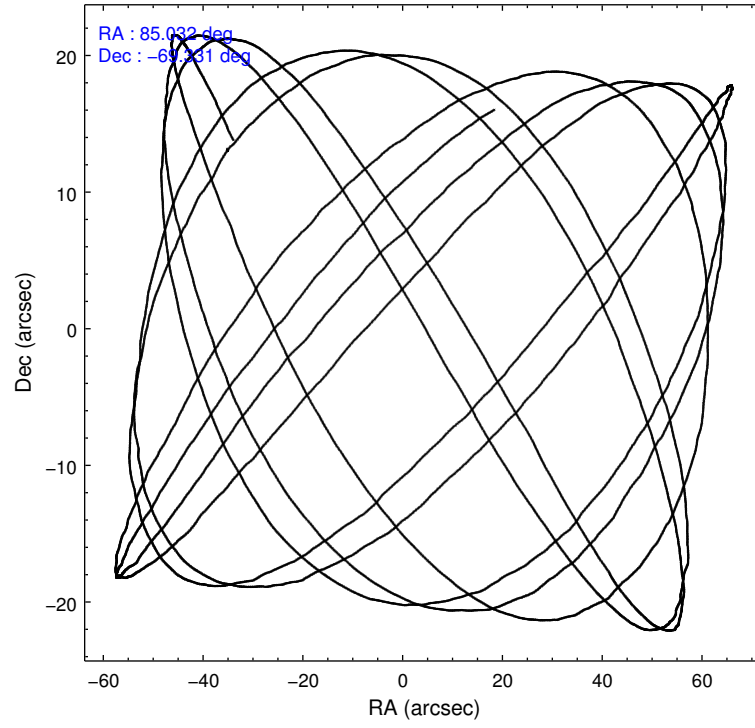
	segment 1	segment 2	segment 3
level 1 events	8191	325982	8133
rejected events	7709	14619	8133
rejected %	94%	4%	100%

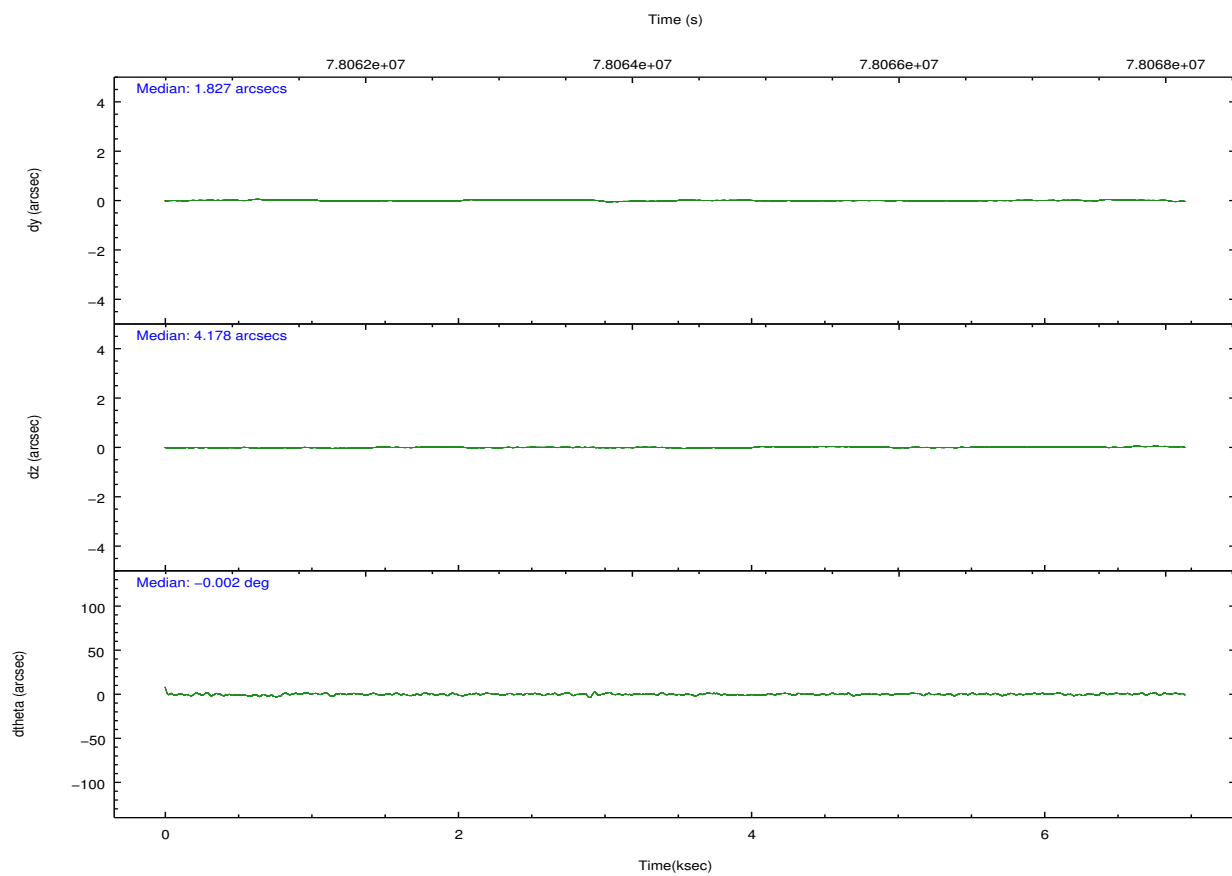
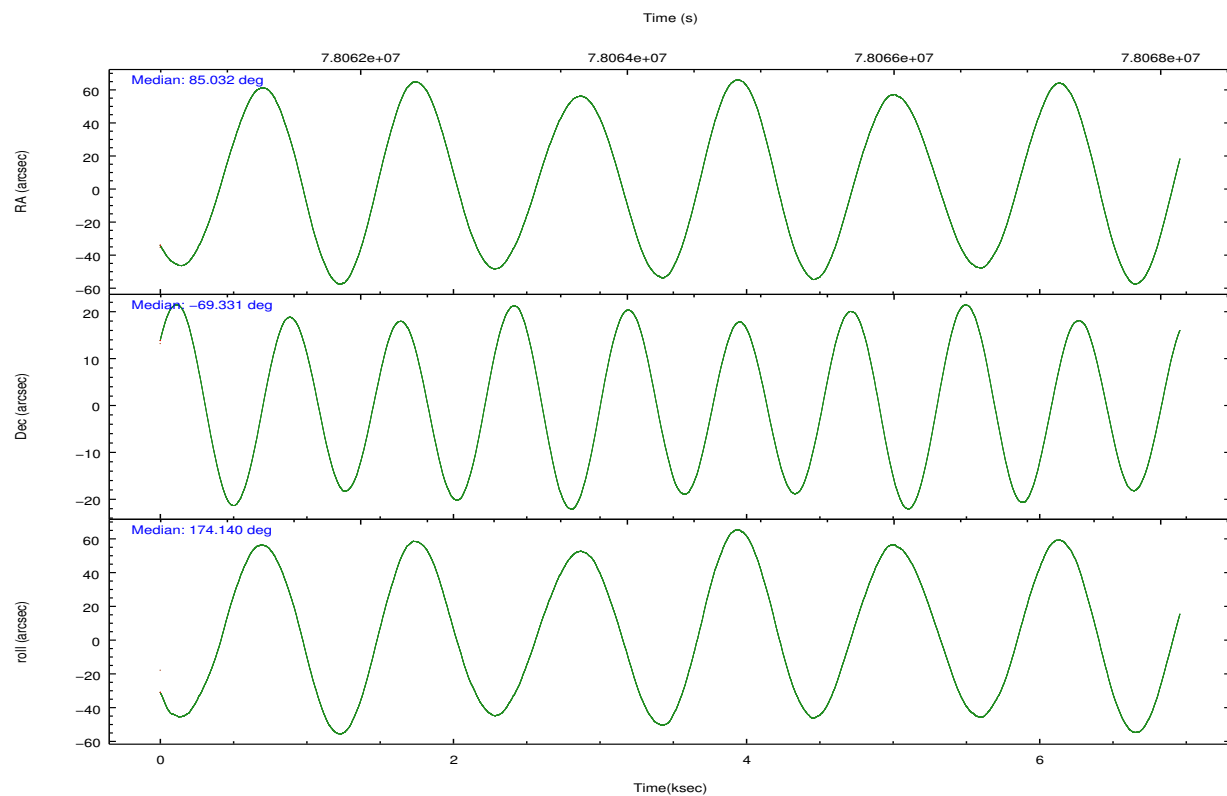
2.2 Compared Parameters

Parameter	Planned	Actual
Instrument	HRC	HRC
Detector	HRC-S	HRC-S
Grating	NONE	NONE
Data mode	OBSERVING	OBSERVING
Observation mode	POINTING	POINTING
[deg] Pointing RA	85.105250	85.03168493975527
[deg] Pointing Dec	-69.318393	-69.33120772965736
[deg] Pointing Roll	174.145571	174.1440808883262
[mm] SIM focus pos	-1.429586	-1.428180813131781
[mm] SIM defocus	0.1037507710433287	0.1051558262725154
[mm] SIM translation stage pos	250.455976	250.466033080201
[mm] SIM translation stage offset	0	-0.01005468664627074
[s] Observation start time (MET)	78061037.184000	78060661.15010899
Observation start date	2000-06-22T11:36:13	2000-06-22T11:31:01
[s] Observation end time (MET)	78067797.184000	78067930.96287701
Observation end date	2000-06-22T13:28:53	2000-06-22T13:32:10

Parameter	Planned	Actual
Obspar format version number	7	7
Obspar file type	PREDICTED	ACTUAL
Obspar update status	NONE	UPDATED

2.3 Aspect



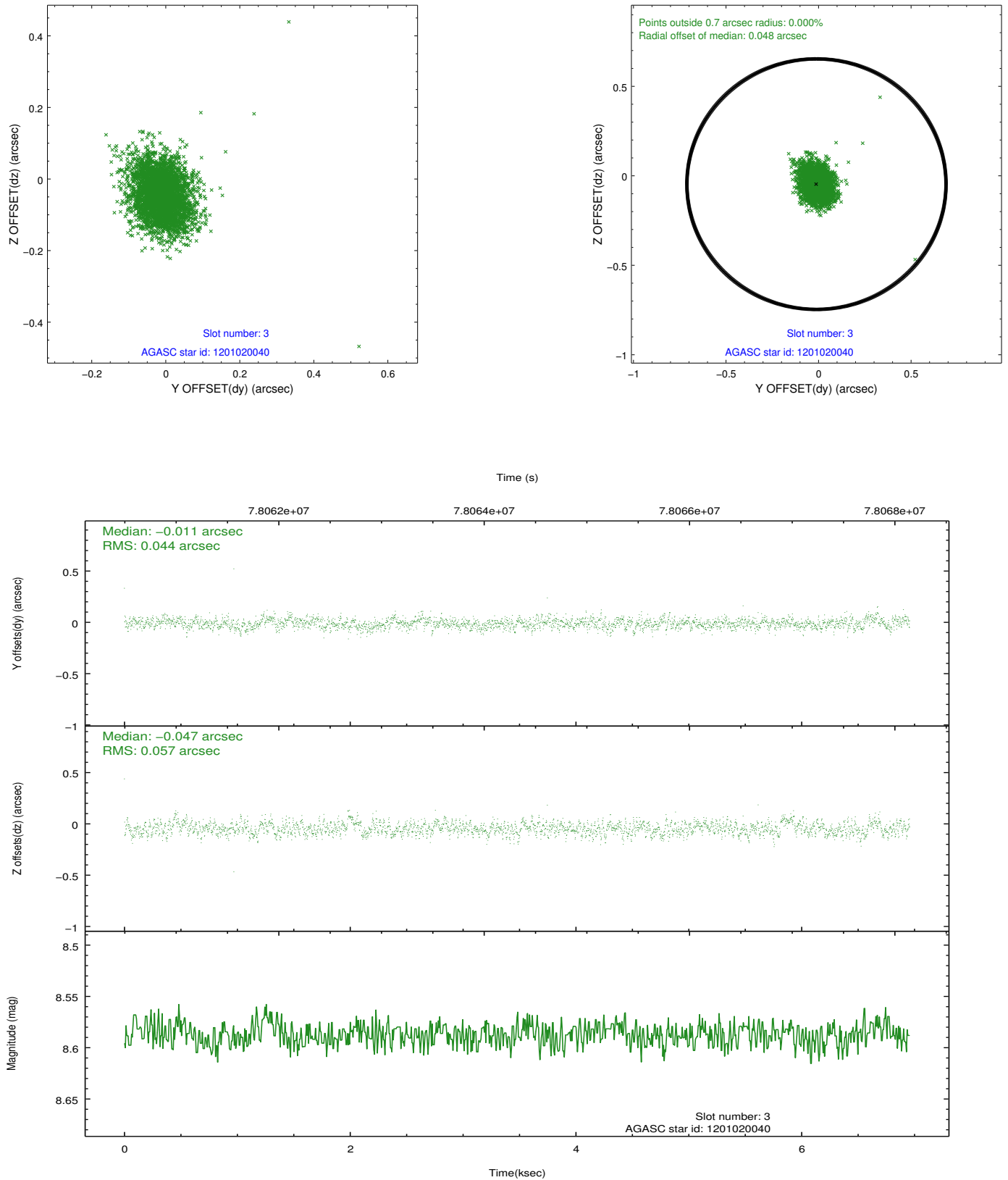


Slot Statistics

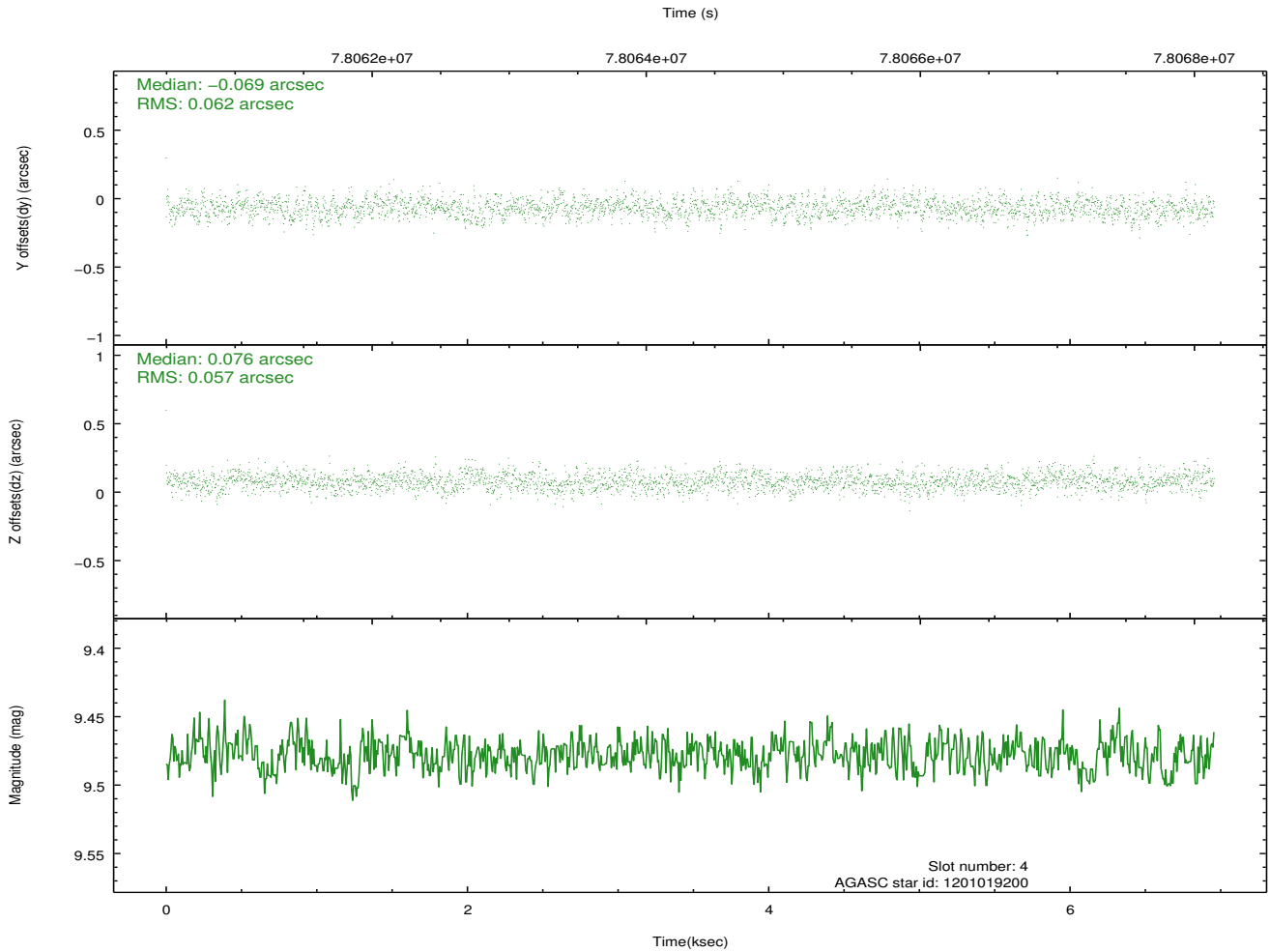
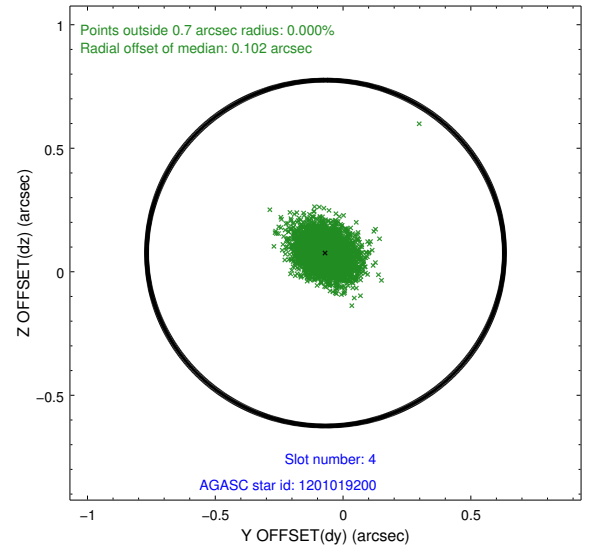
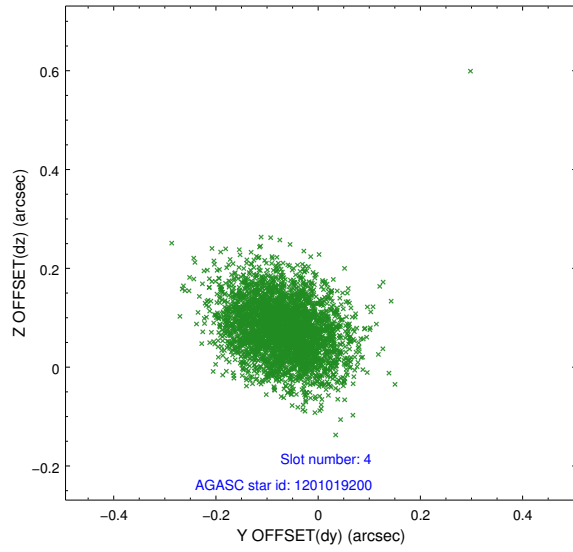
slot	status	id	mag	n_pts	med_dy	med_dz	dr1	dr2	ra	dec	mean_y	mean_z
0	FID	HRC-S-1	6.95	1698	0.124	-0.115	0.007	0.012	0.000000	0.000000	-1155.87	-452.60
1	FID	HRC-S-3	6.98	1698	0.142	-0.084	0.007	0.013	0.000000	0.000000	-1159.22	576.69
2	FID	HRC-S-4	6.92	1698	0.122	-0.098	0.004	0.008	0.000000	0.000000	1241.73	579.78
3	GUIDE	1201020040	8.59	3394	-0.011	-0.047	0.074	0.122	85.379163	-68.879396	-192.21	-1607.69
4	GUIDE	1201019200	9.48	3393	-0.069	0.076	0.089	0.145	84.213591	-68.777384	1353.77	-1810.90
5	GUIDE	1201406992	9.27	3393	0.071	-0.049	0.091	0.148	83.682859	-69.471866	1728.09	753.04
6	GUIDE	1200885760	9.47	3391	-0.099	0.065	0.101	0.162	83.723637	-68.777667	1988.05	-1732.30
7	GUIDE	1201020088	10.59	3391	0.107	-0.042	0.147	0.247	86.319248	-68.997756	-1441.14	-1293.31

2.4 Star Slots

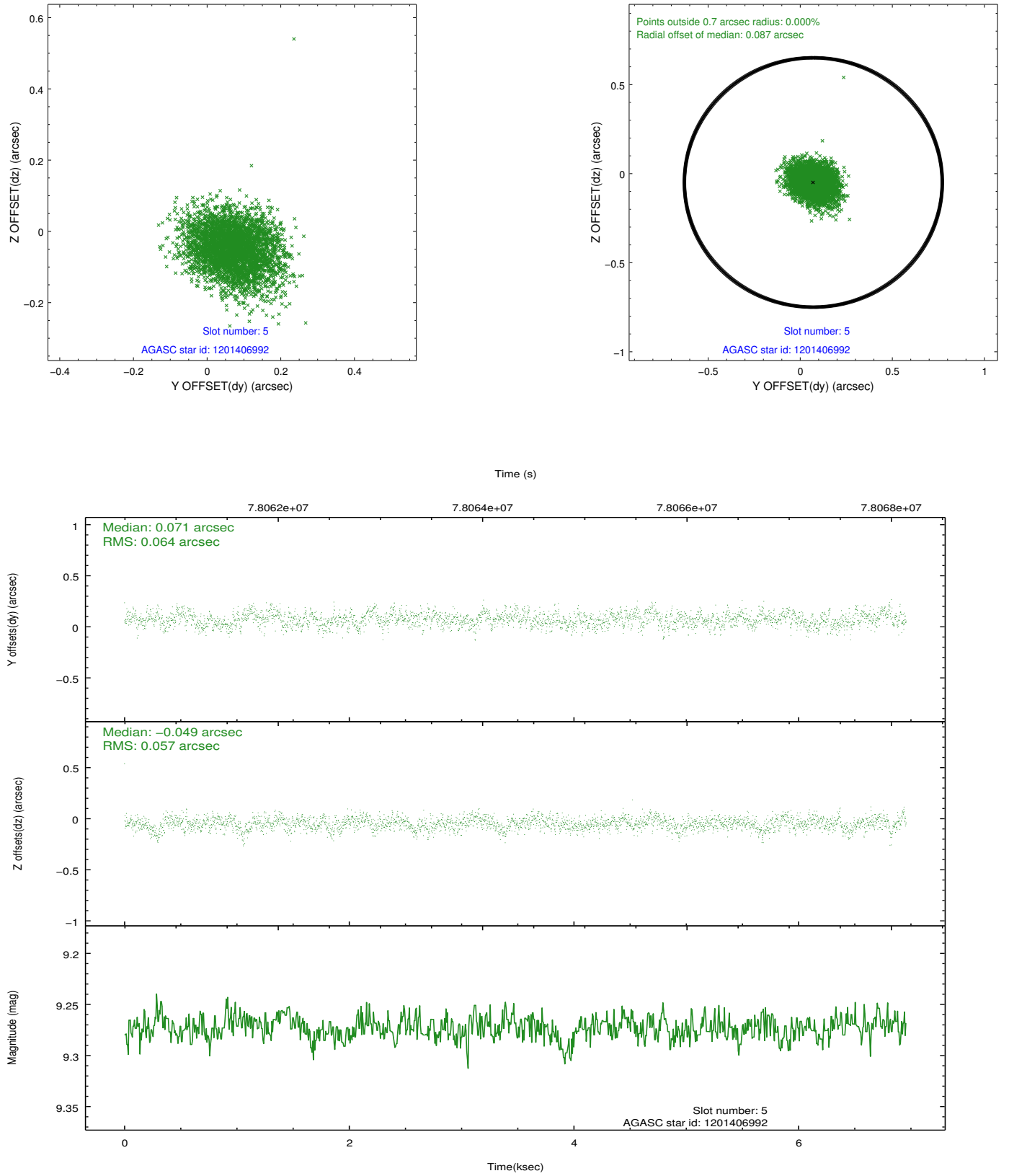
2.4.1 Slot 3



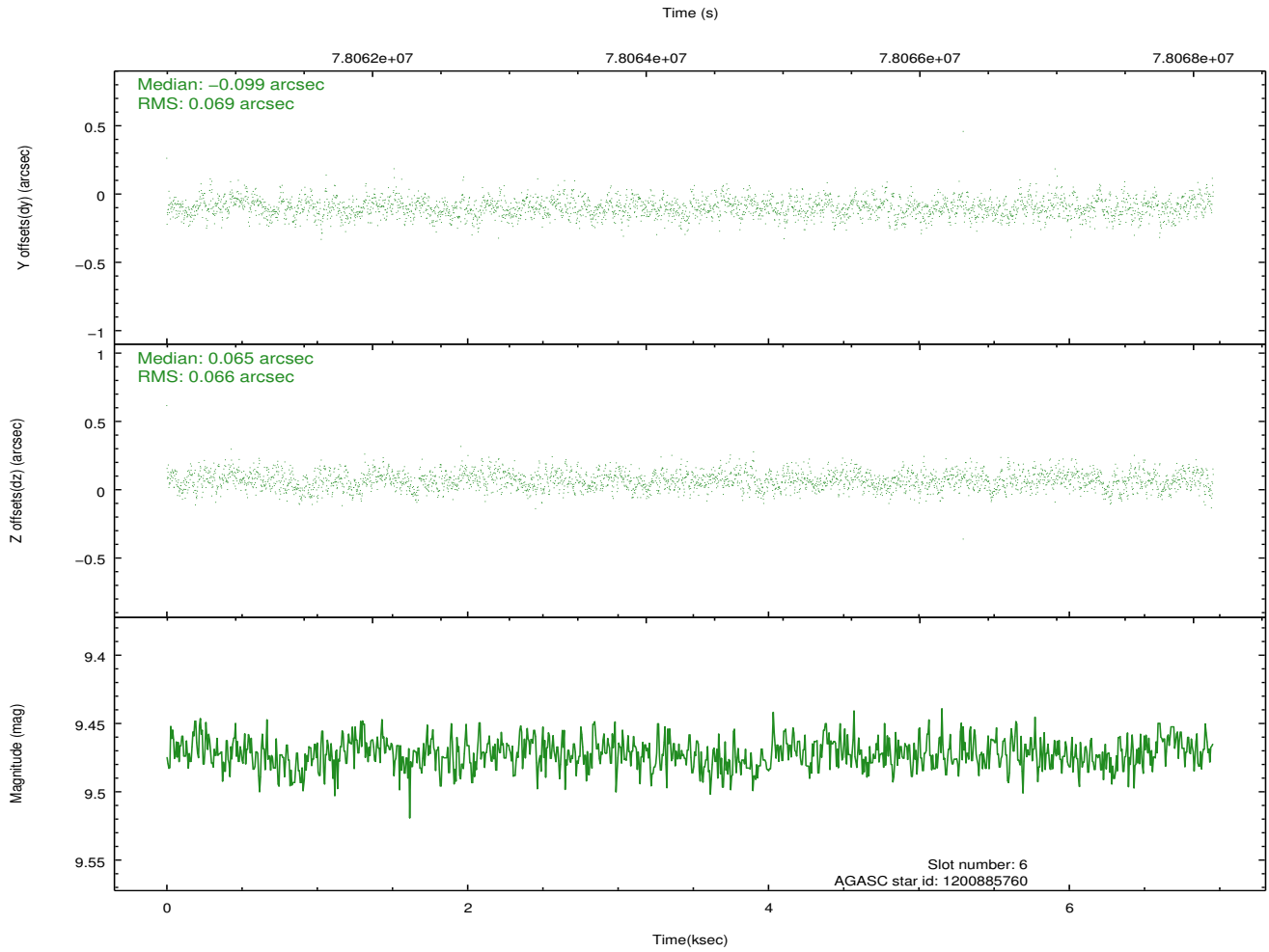
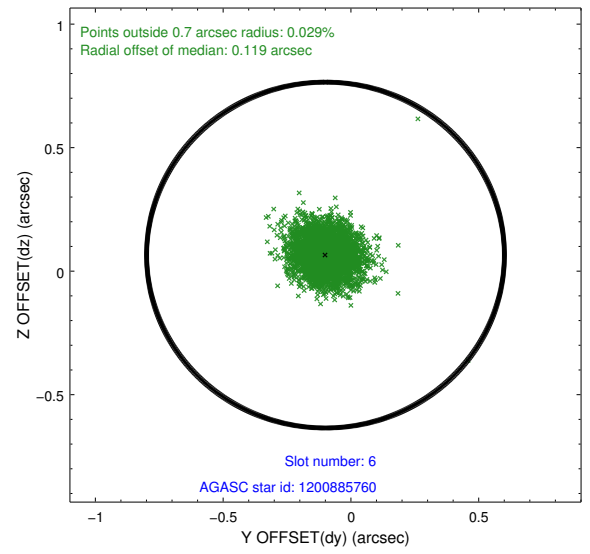
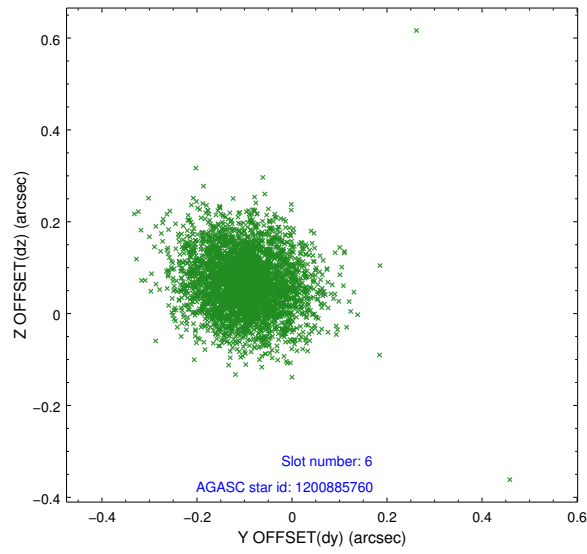
2.4.2 Slot 4



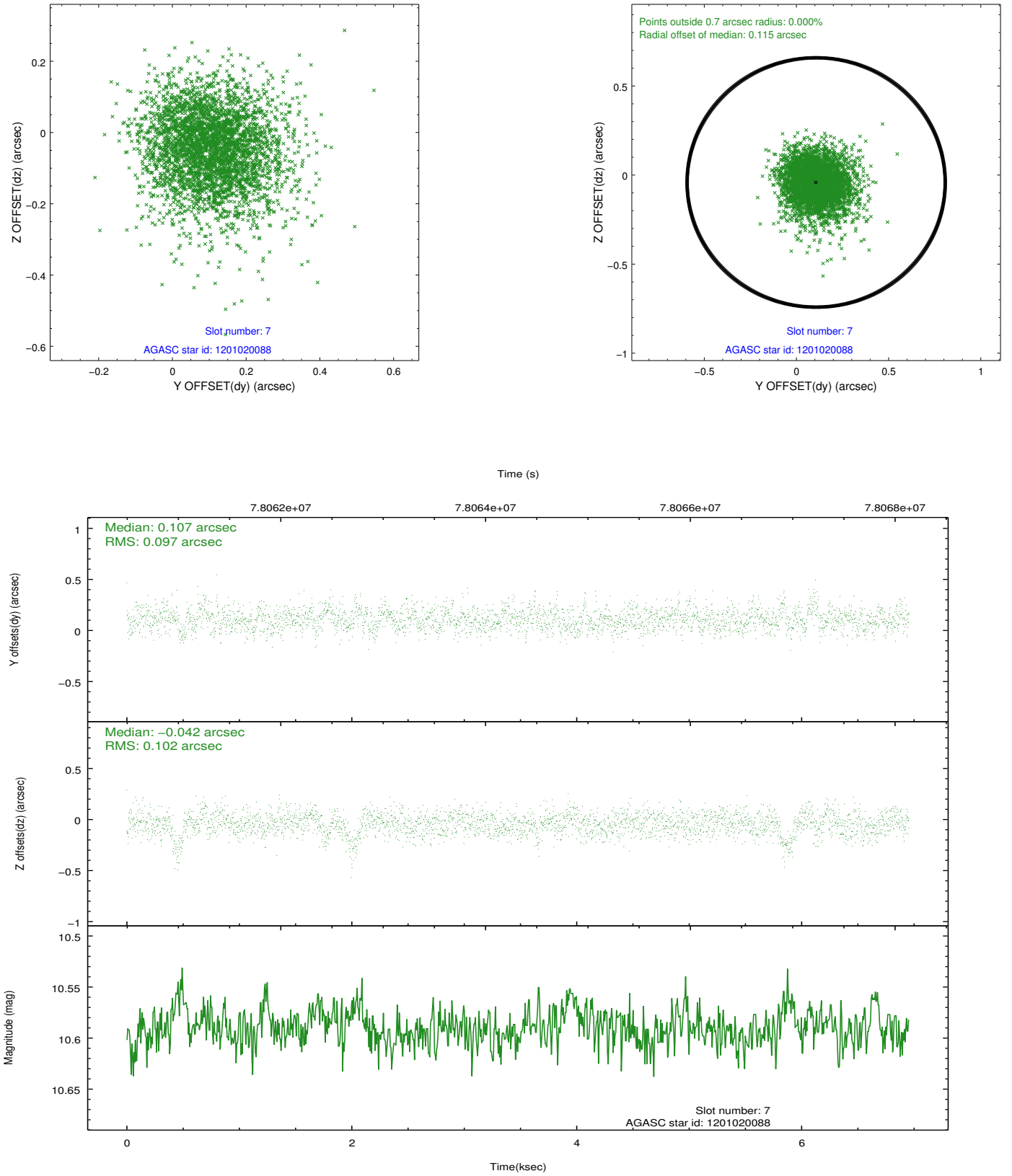
2.4.3 Slot 5



2.4.4 Slot 6

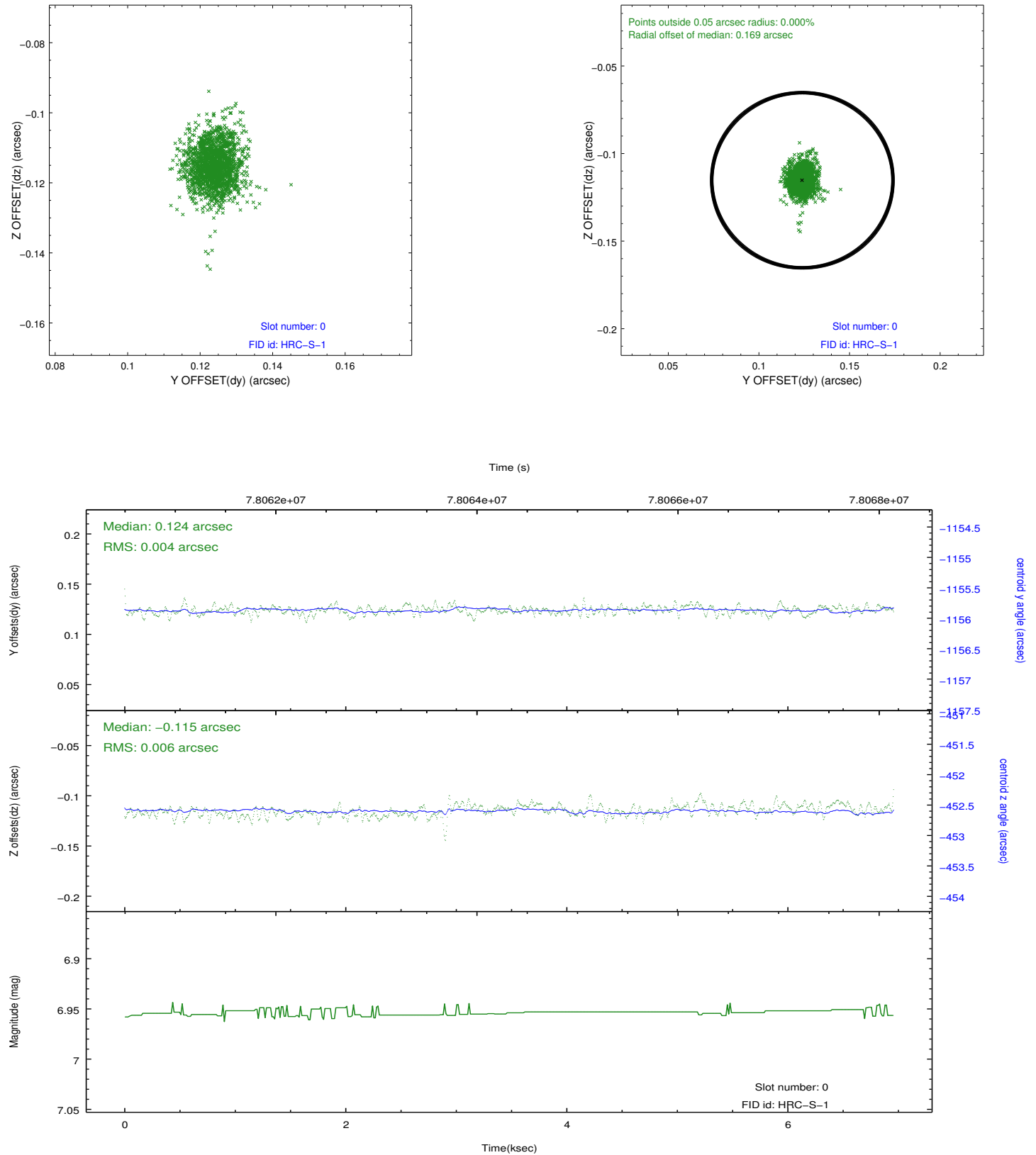


2.4.5 Slot 7

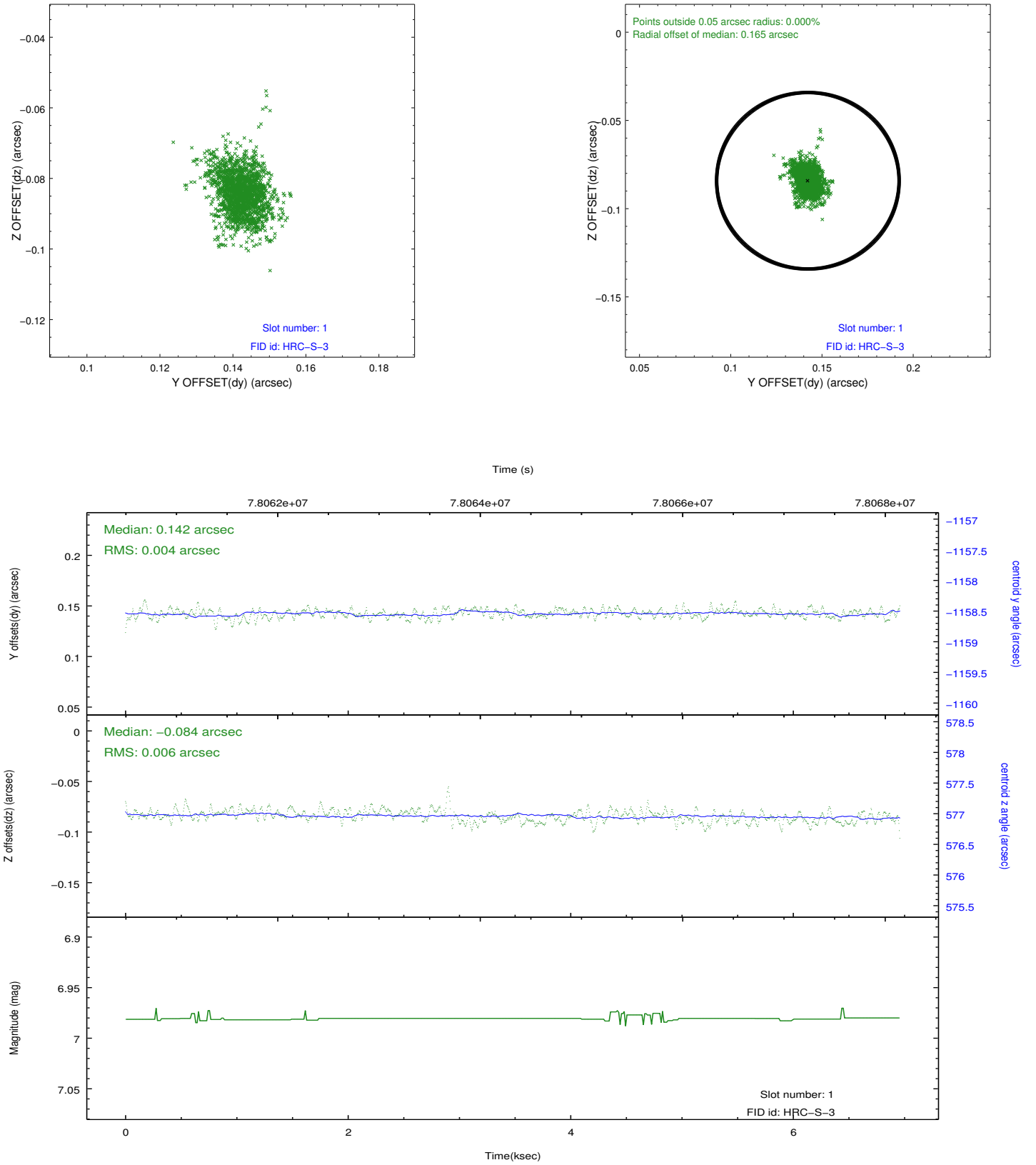


2.5 FID Slots

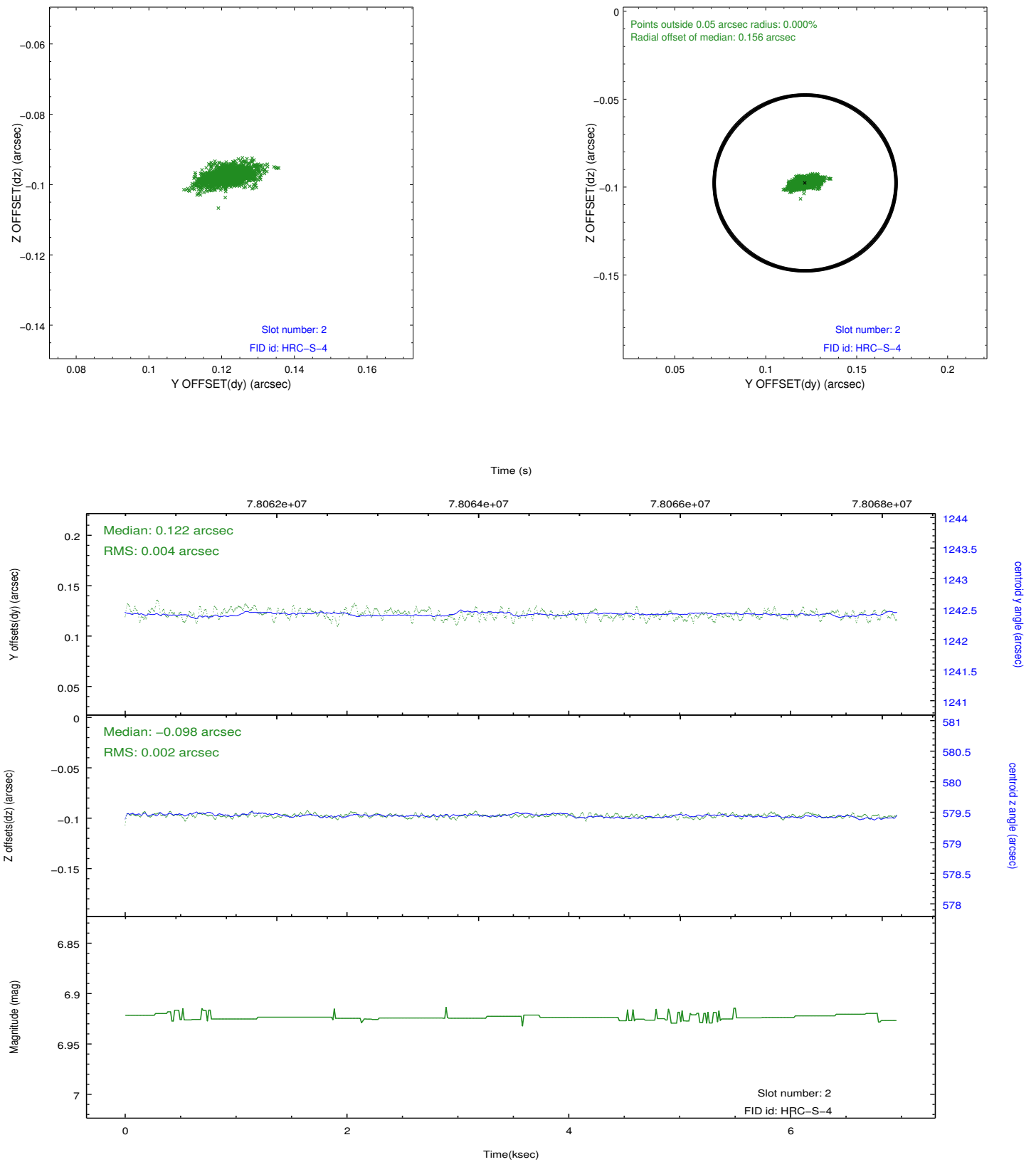
2.5.1 Slot 0



2.5.2 Slot 1



2.5.3 Slot 2



A Summary

A.1 Status

V&V Scientist	Jen Lauer
V&V Date (YYYY-MM-DD)	2012.08.31
V&V Edition	1
V&V Disposition and Status	OK
V&V Charge Time	6.949

A.2 Comments

Charge time for this ObsId remains at previous value of 6.949 ks although with the current processing the charge time would have been 6.901 ksec.