

V&V Reference Report

L2 ASCDS Version : 7.6.10

Observation 1745 - L2 Version 001
Chandra X-Ray Center

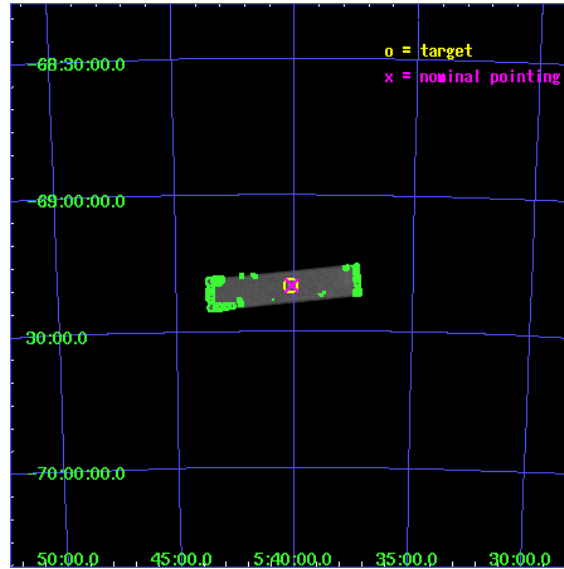
L2 Processing Date : May 27 2007

Contents

1	Front	2
2	OBI	3
2.1	OBI	3
2.1.1	Images	3
2.1.2	Parameters	4
2.1.3	Events	4
2.2	Compared Parameters	5
2.3	Aspect	6
2.4	Star Slots	9
2.4.1	Slot 3	9
2.4.2	Slot 4	10
2.4.3	Slot 5	11
2.4.4	Slot 6	12
2.4.5	Slot 7	13
2.5	FID Slots	14
2.5.1	Slot 0	14
2.5.2	Slot 1	15
2.5.3	Slot 2	16
3	Point Sources	17
A	Summary	18
A.1	Status	18
A.2	Comments	18

1 Front

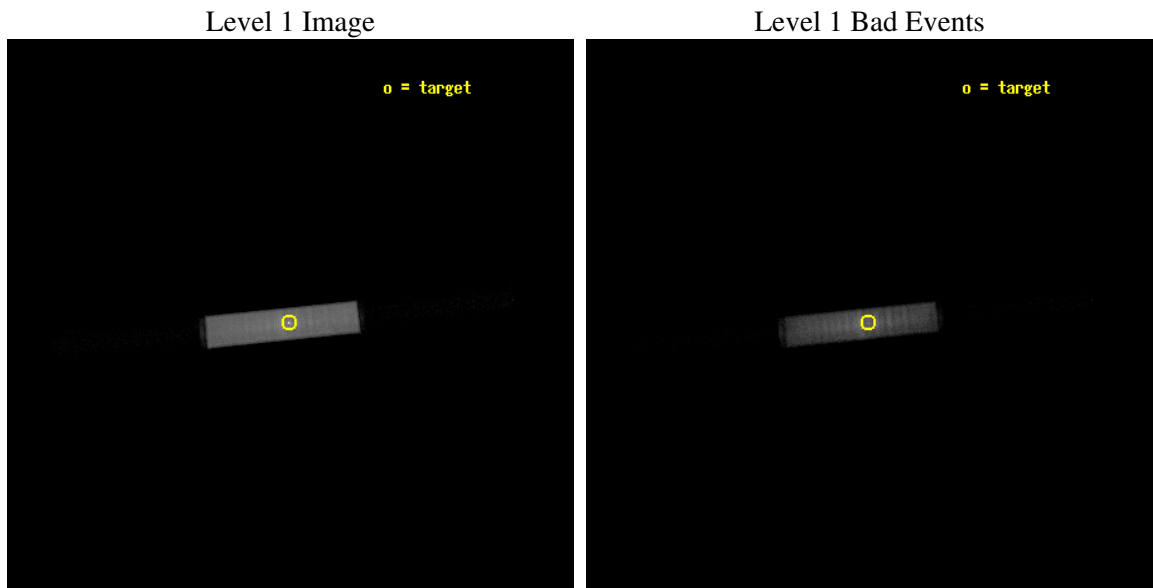
seq_num	590194
obs_id	1745
title	VERIFICATION OF AXAF TIMING CAPABILITY
observer	Dr. CXC Calibration
object	PSR B0540-69
ra_targ	85.04625
dec_targ	-69.332
ra_nom	85.031684939755
dec_nom	-69.331207729657
roll_nom	174.14408088833
revision	5
ontime	6901.5815044194
livetime	6880.4549333605
l2events	187959



2 OBI

2.1 OBI

2.1.1 Images



2.1.2 Parameters

obi_num	0
ascdsver	7.6.10
caldbver	3.4.0
date	2007-05-27T06:22:47
revision	4

sched_exp_time	6760.000000
ontime	6901.5815044194
l1events	342306

2.1.3 Events

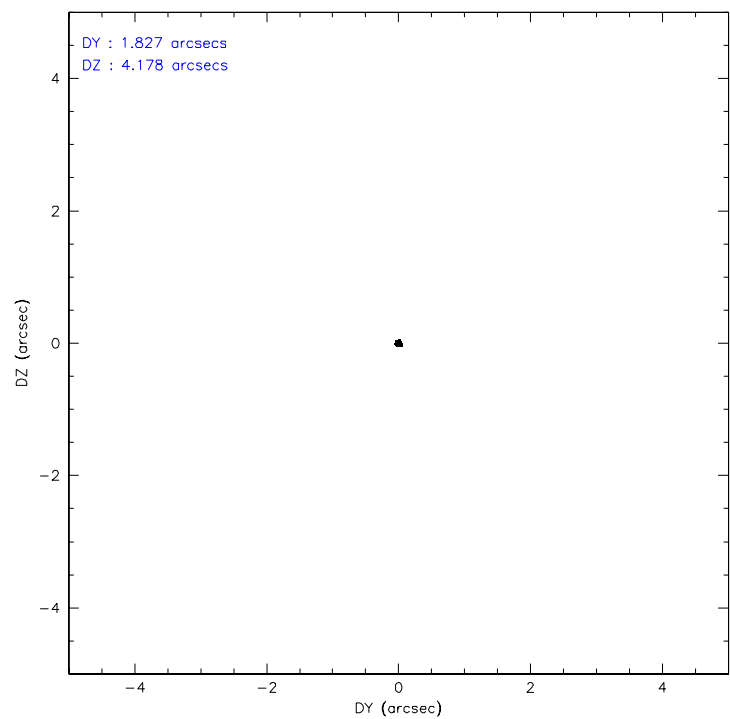
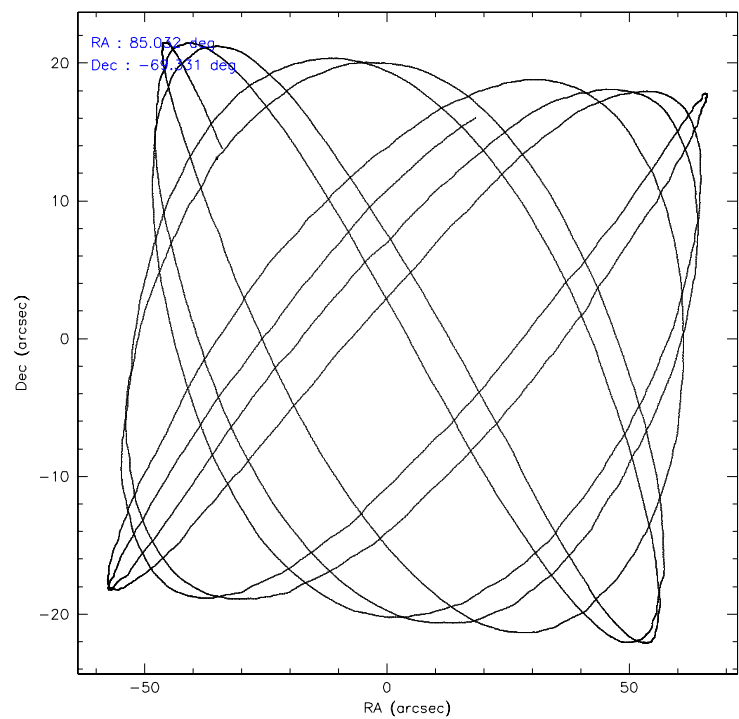
Level 1 Events

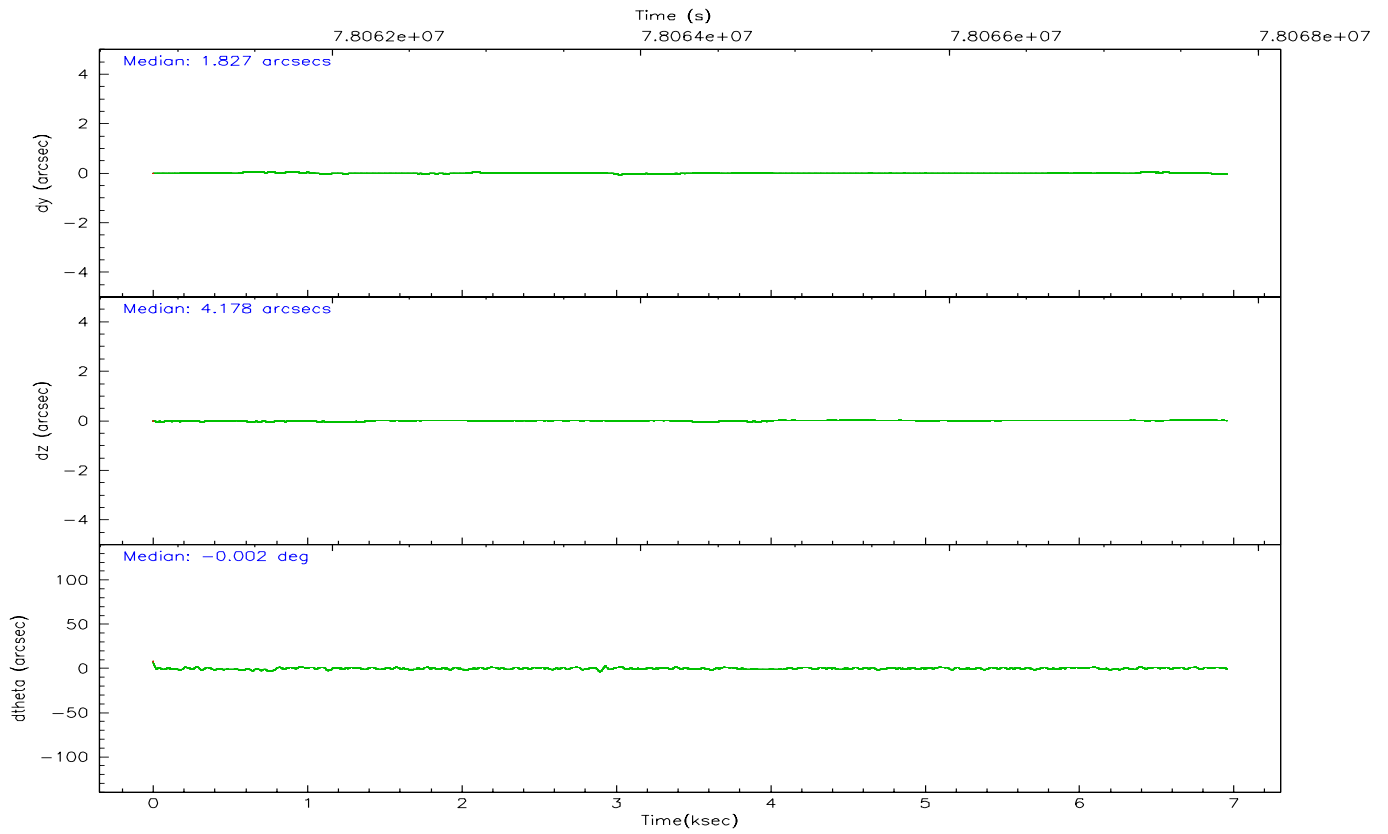
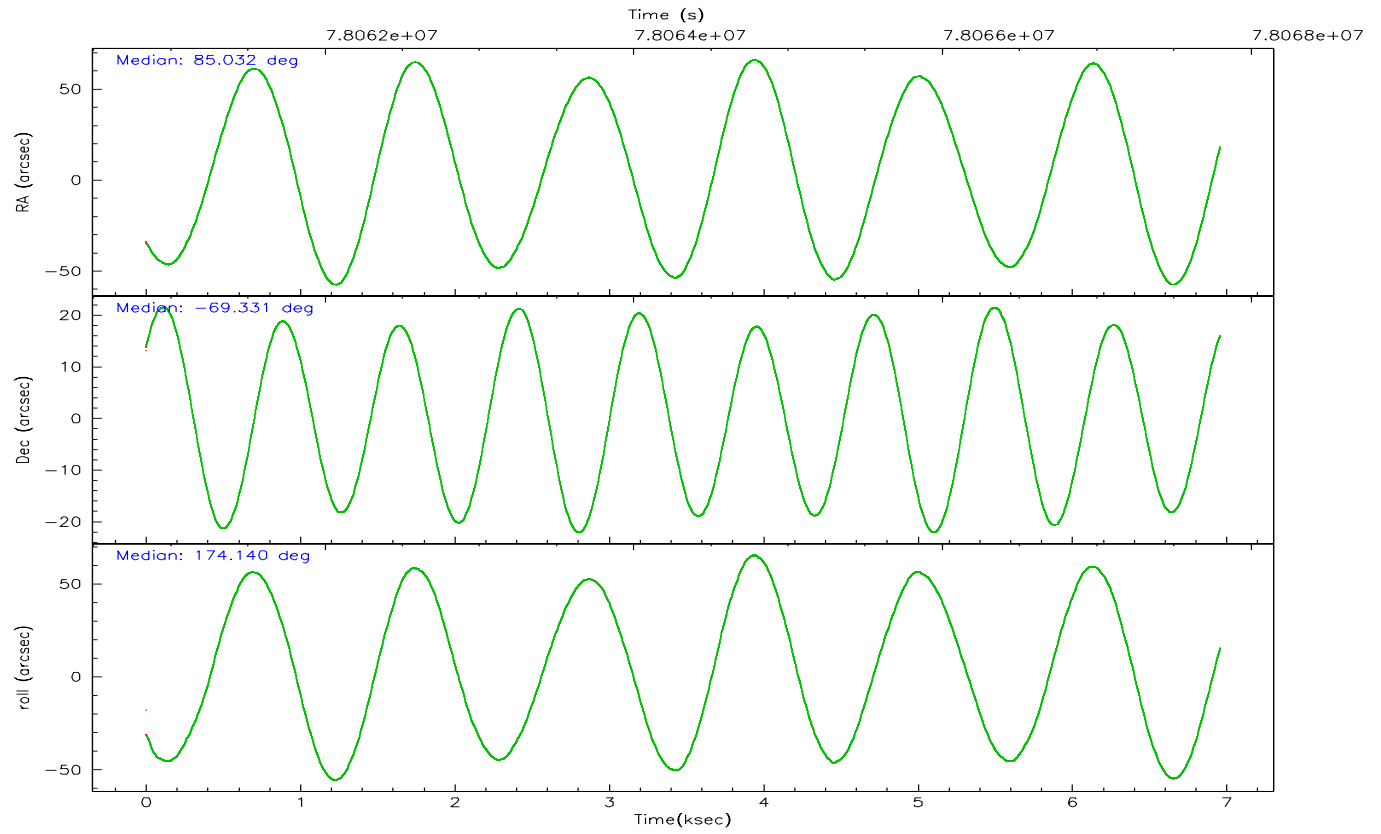
	segment 1	segment 2	segment 3
level 1 events	8191	325982	8133
rejected events	8168	124402	8133
rejected %	99%	38%	100%

2.2 Compared Parameters

Parameter	Planned	Actual	Parameter	Planned	Actual
Instrument	HRC	HRC	Obspar format version number	6	6
Detector	HRC-S	HRC-S	Obspar file type	PREDICTED	ACTUAL
Grating	NONE	NONE	Obspar update status	NONE	UPDATED
Data mode	OBSERVING	OBSERVING			
Observation mode	POINTING	POINTING			
Pointing RA	85.105250	85.03168493975546			
Pointing Dec	-69.318393	-69.33120772965731			
Pointing Roll	174.145571	174.1440808883264			
SIM focus pos (mm)	-1.429586	-1.428180813131781			
SIM defocus (mm)	0.1037507710433287	0.1051558262725154			
SIM translation stage pos (mm)	250.455976	250.466033080201			
SIM translation stage offset (mm)	0	-0.01005468664627074			
Observation start time	78061037.184000	78060661.15010899			
Observation start date	2000-06-22T11:36:13	2000-06-22T11:31:01			
Observation end time	78067797.184000	78067930.96287701			
Observation end date	2000-06-22T13:28:53	2000-06-22T13:32:10			

2.3 Aspect



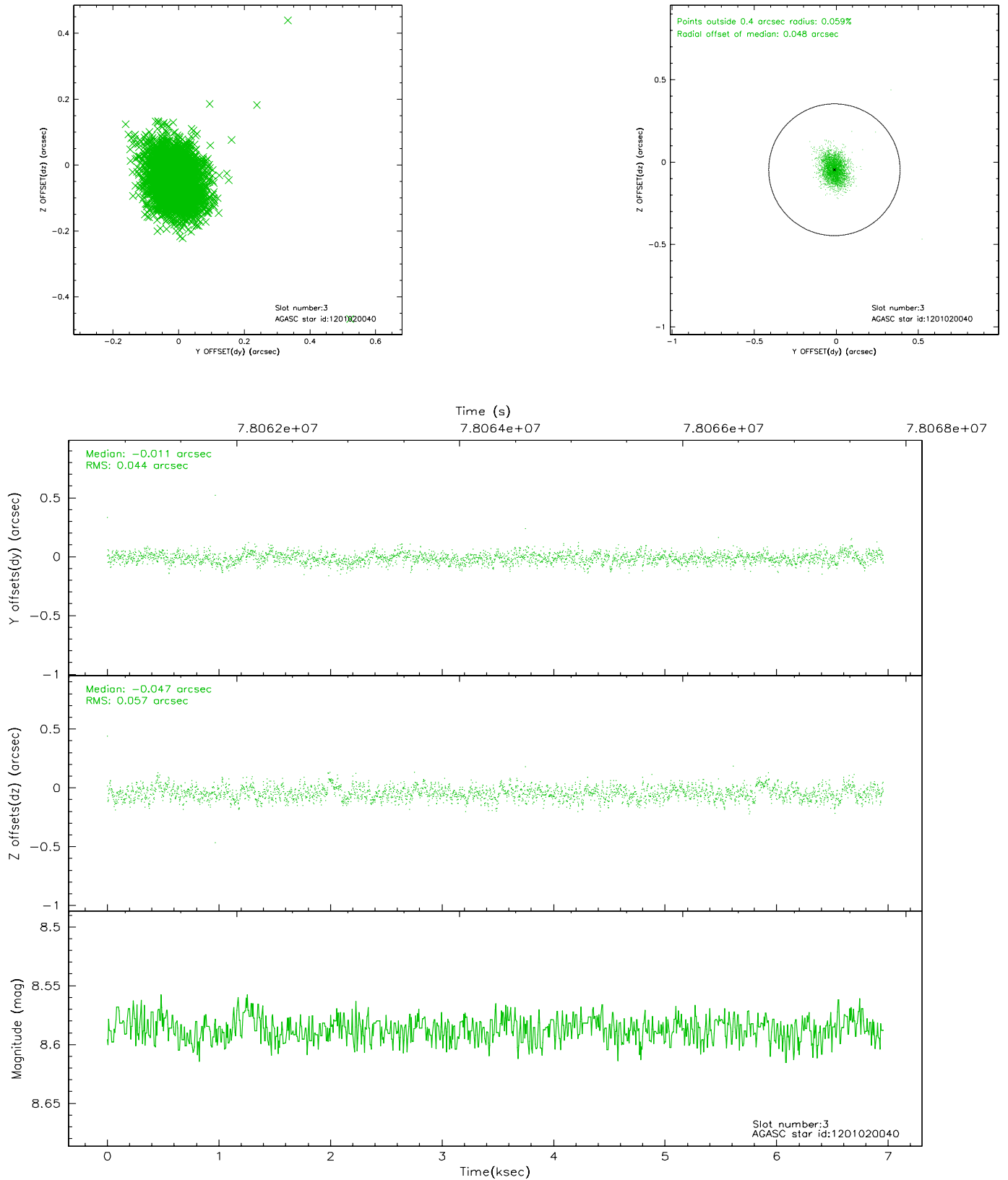


Slot Statistics

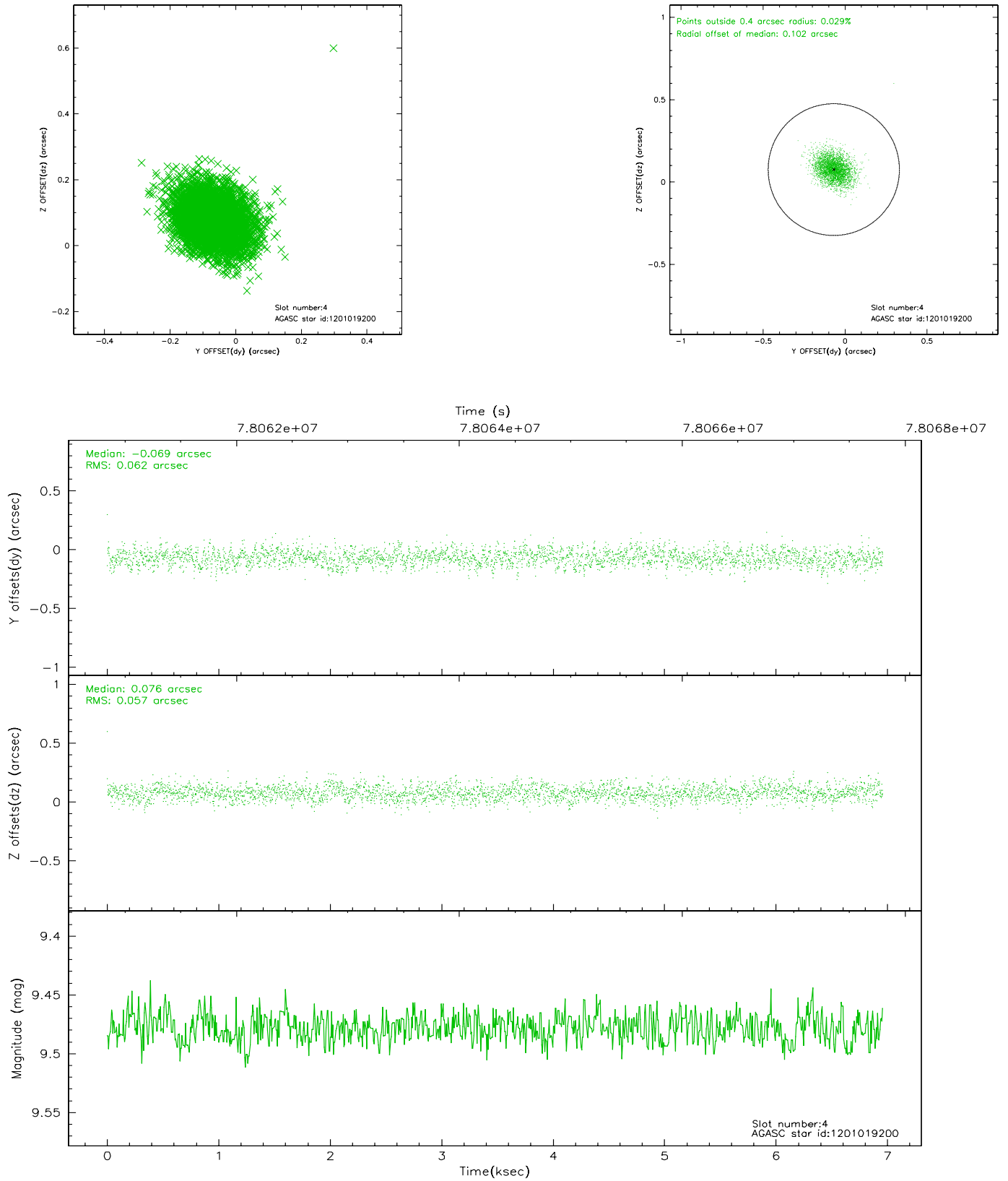
slot	status	id	mag	n_pts	med_dy	med_dz	dr1	dr2	ra	dec	mean_y	mean_z
0	FID	HRC-S-1	6.95	1698	0.124	-0.115	0.007	0.012	0.000000	0.000000	-1155.87	-452.60
1	FID	HRC-S-3	6.98	1698	0.142	-0.084	0.007	0.013	0.000000	0.000000	-1159.22	576.69
2	FID	HRC-S-4	6.92	1698	0.122	-0.098	0.004	0.008	0.000000	0.000000	1241.73	579.78
3	GUIDE	1201020040	8.59	3394	-0.011	-0.047	0.074	0.122	85.379163	-68.879396	-192.21	-1607.69
4	GUIDE	1201019200	9.48	3393	-0.069	0.076	0.089	0.145	84.213591	-68.777384	1353.77	-1810.90
5	GUIDE	1201406992	9.27	3393	0.071	-0.049	0.091	0.148	83.682859	-69.471866	1728.09	753.04
6	GUIDE	1200885760	9.47	3389	-0.099	0.065	0.101	0.162	83.723637	-68.777667	1988.06	-1732.30
7	GUIDE	1201020088	10.59	3391	0.107	-0.042	0.147	0.247	86.319248	-68.997756	-1441.14	-1293.31

2.4 Star Slots

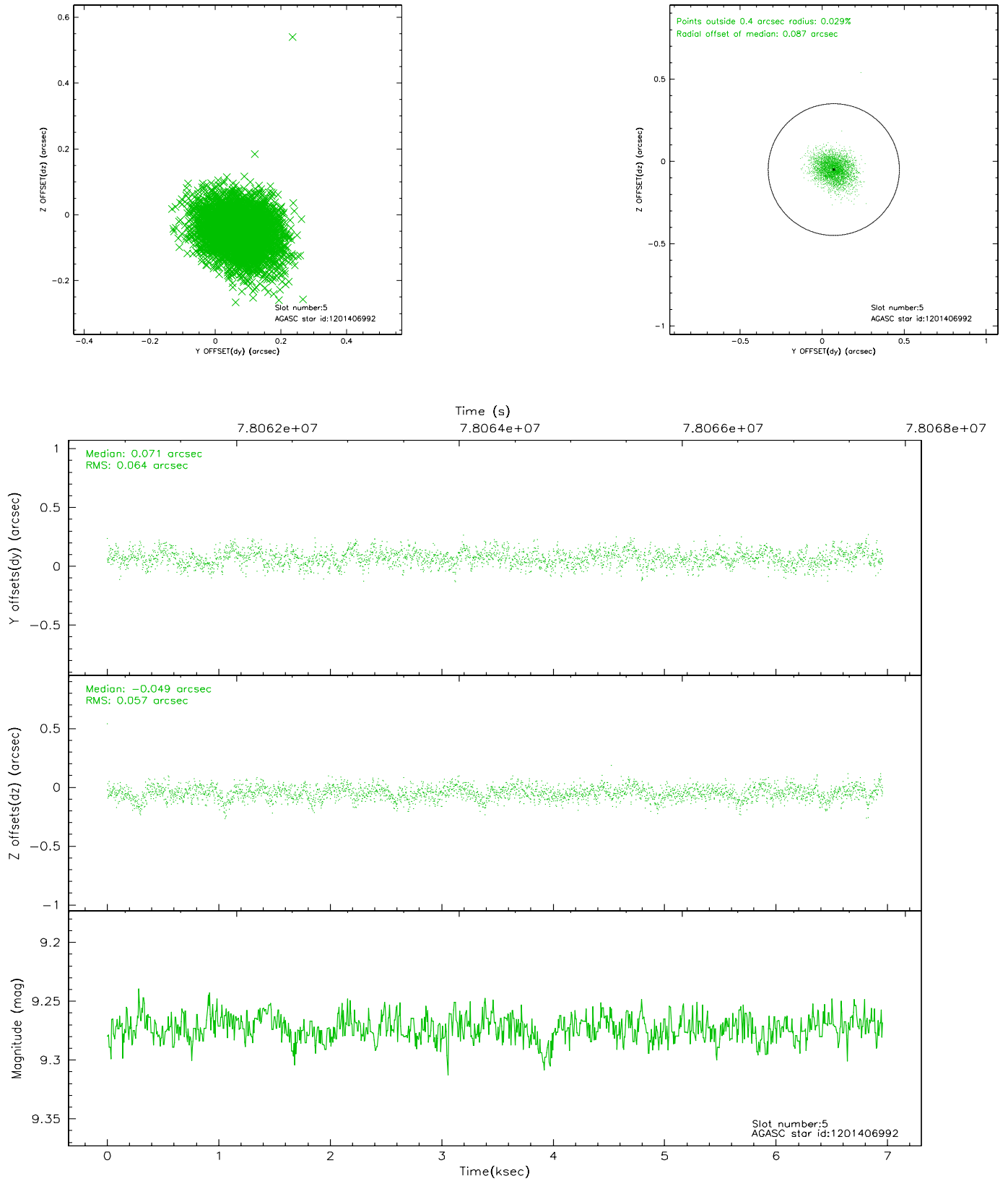
2.4.1 Slot 3



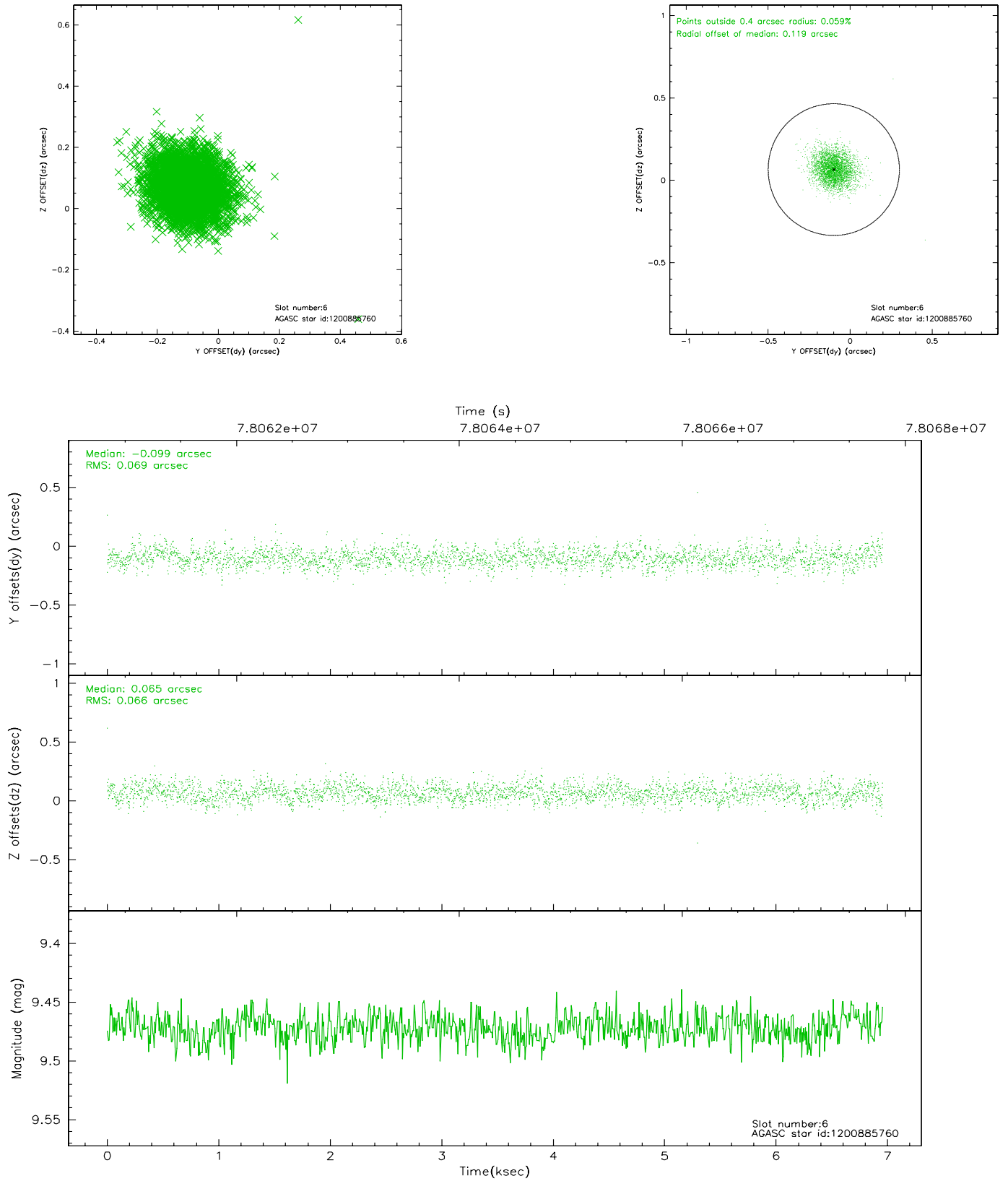
2.4.2 Slot 4



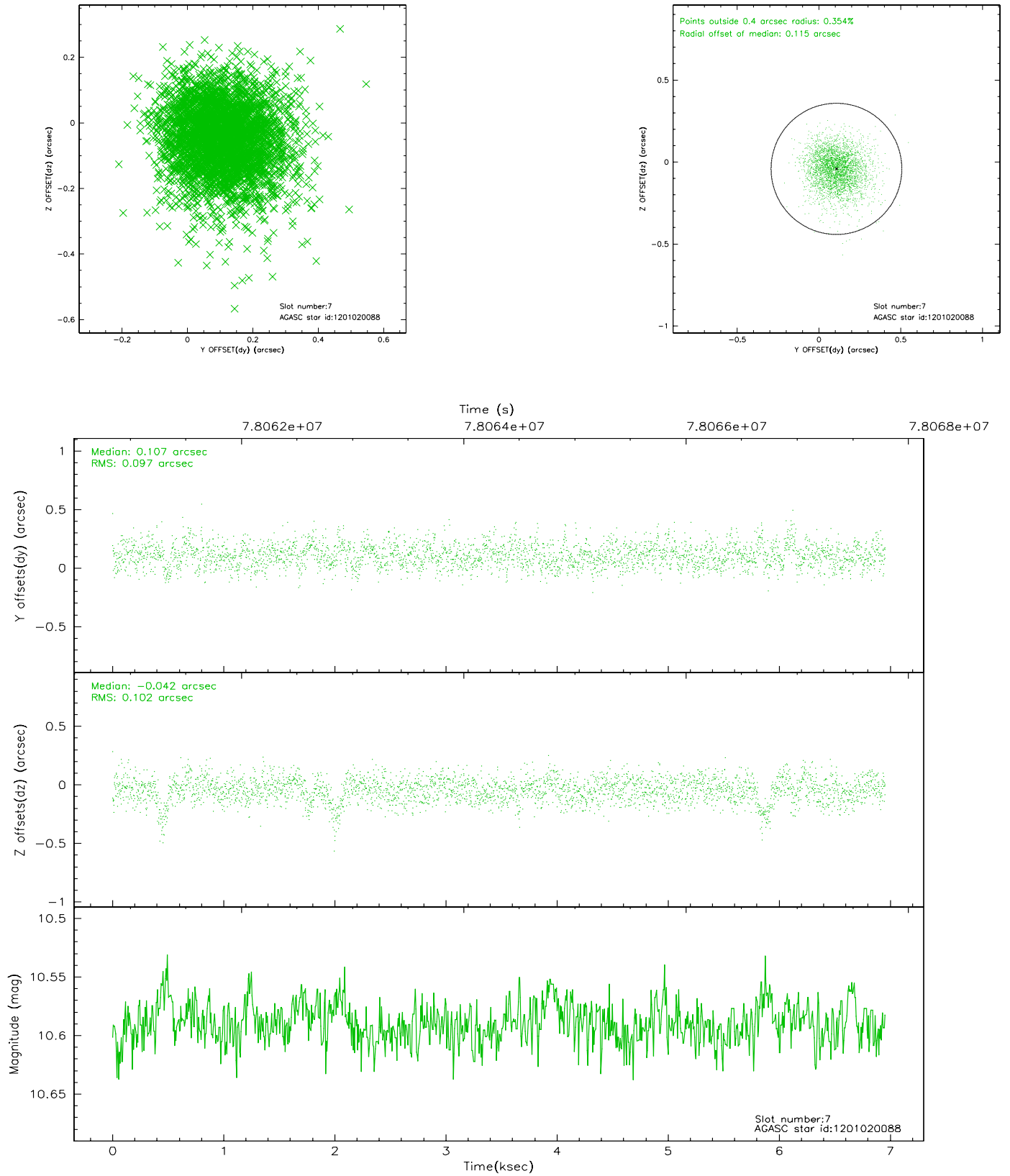
2.4.3 Slot 5



2.4.4 Slot 6

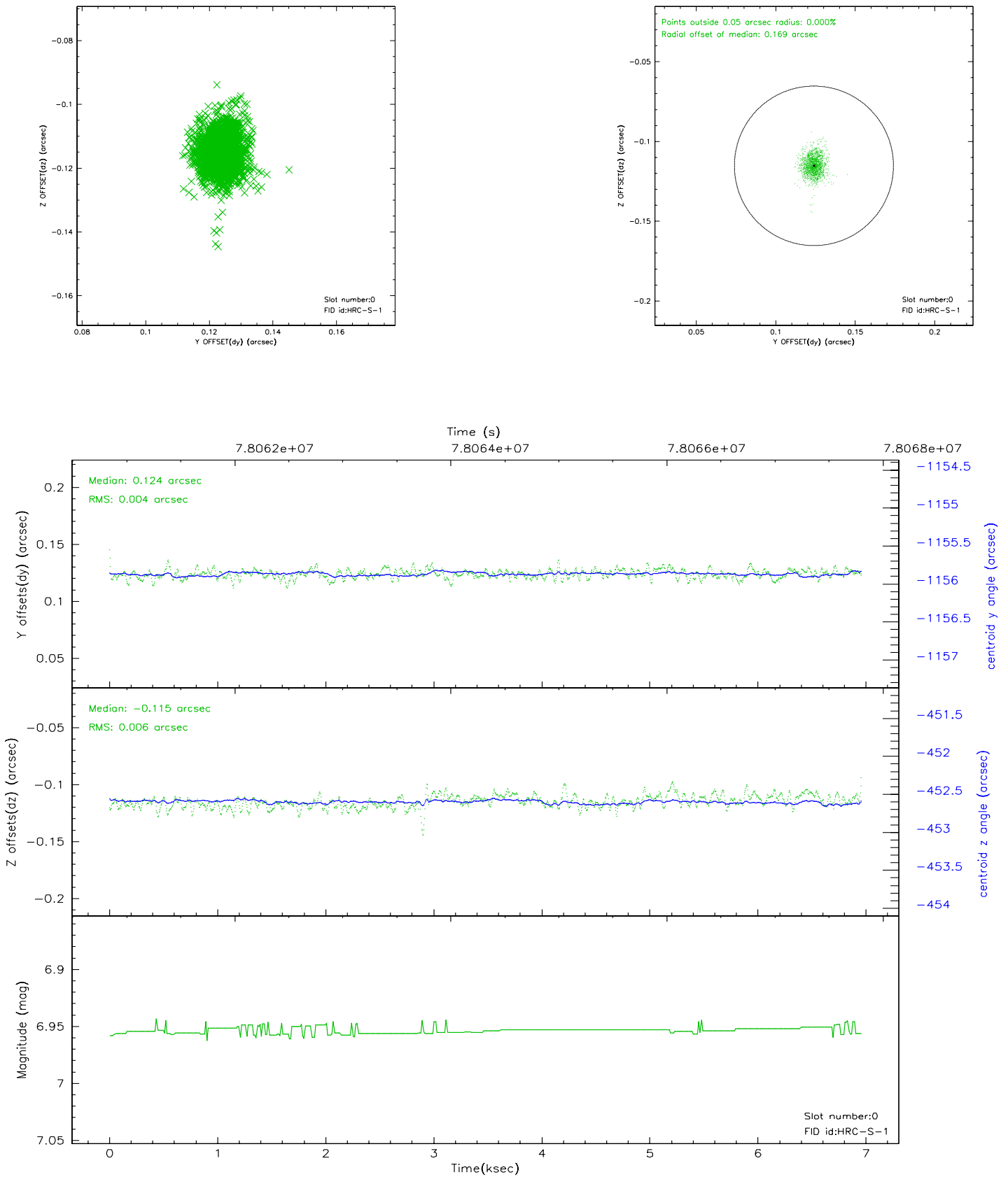


2.4.5 Slot 7

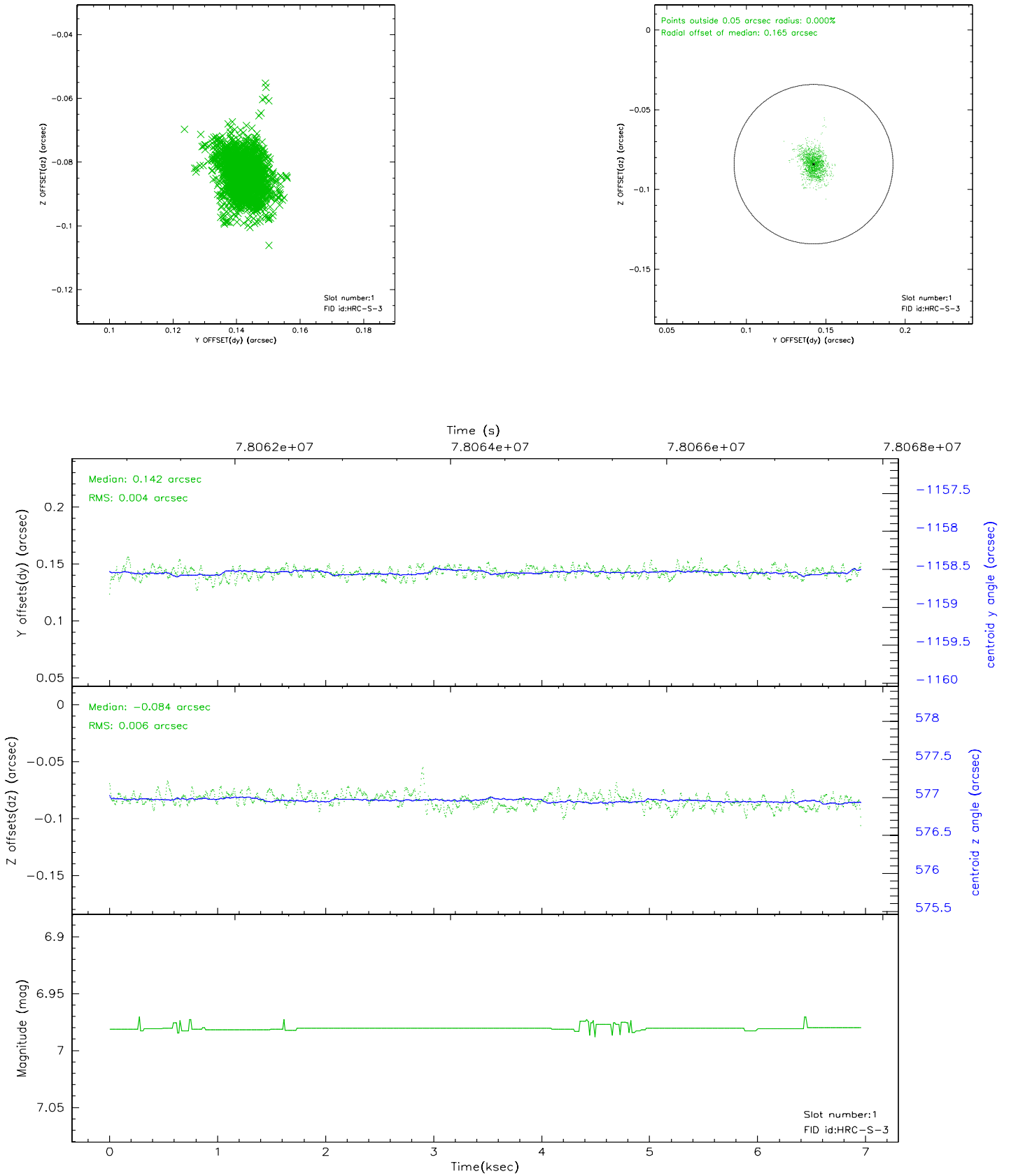


2.5 FID Slots

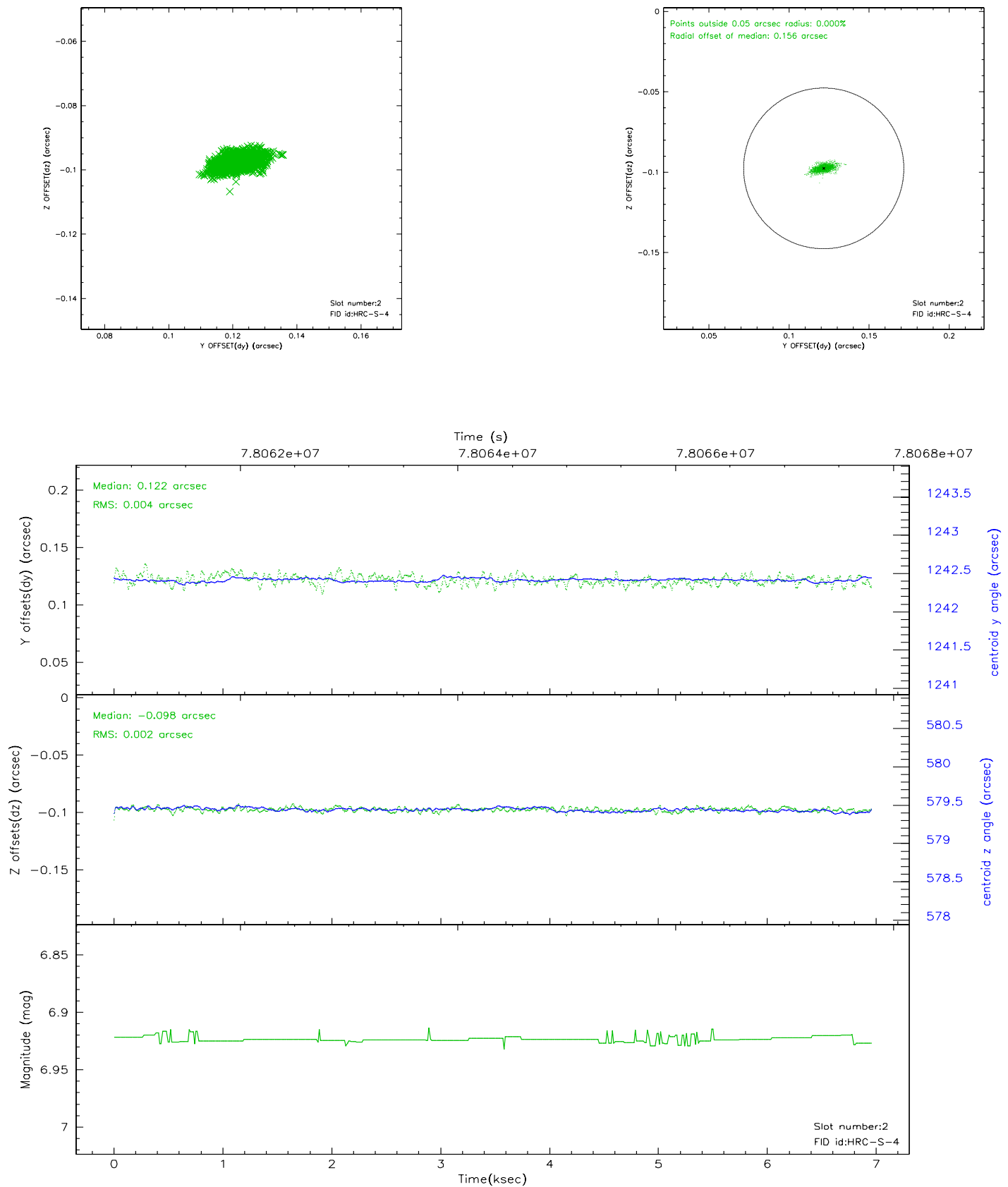
2.5.1 Slot 0



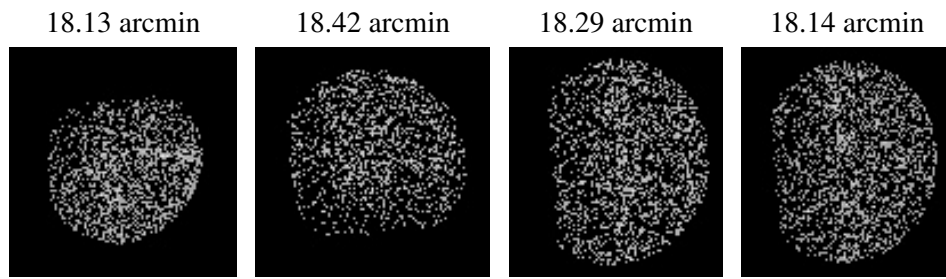
2.5.2 Slot 1



2.5.3 Slot 2



3 Point Sources



A Summary

A.1 Status

V&V Scientist	Jen Lauer
V&V Date (YYYY-MM-DD)	2007.05.27
V&V Edition	1
V&V Disposition and Status	OK
V&V Charge Time	6.949

A.2 Comments