

V&V Reference Report

L2 ASCDS Version : 10.4

Observation 17235 - L2 Version 1
Chandra X-Ray Center

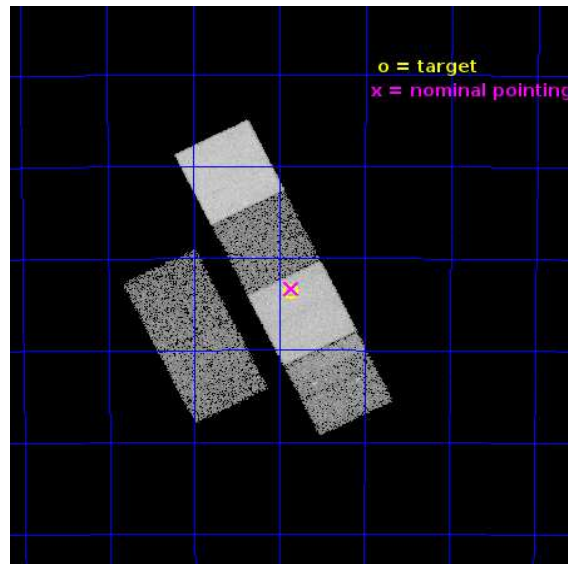
L2 Processing Date : Jun 25 2015

Contents

1	Front	2
2	OBI	3
2.1	OBI	3
2.1.1	Images	3
2.1.2	Bias	3
2.1.3	Parameters	4
2.1.4	Events	4
2.2	Compared Parameters	5
2.3	Aspect	6
2.4	Star Slots	9
2.4.1	Slot 3	9
2.4.2	Slot 4	10
2.4.3	Slot 5	11
2.4.4	Slot 6	12
2.4.5	Slot 7	13
2.5	FID Slots	14
2.5.1	Slot 0	14
2.5.2	Slot 1	15
2.5.3	Slot 2	16
A	Summary	17
A.1	Status	17
A.2	Comments	17

1 Front

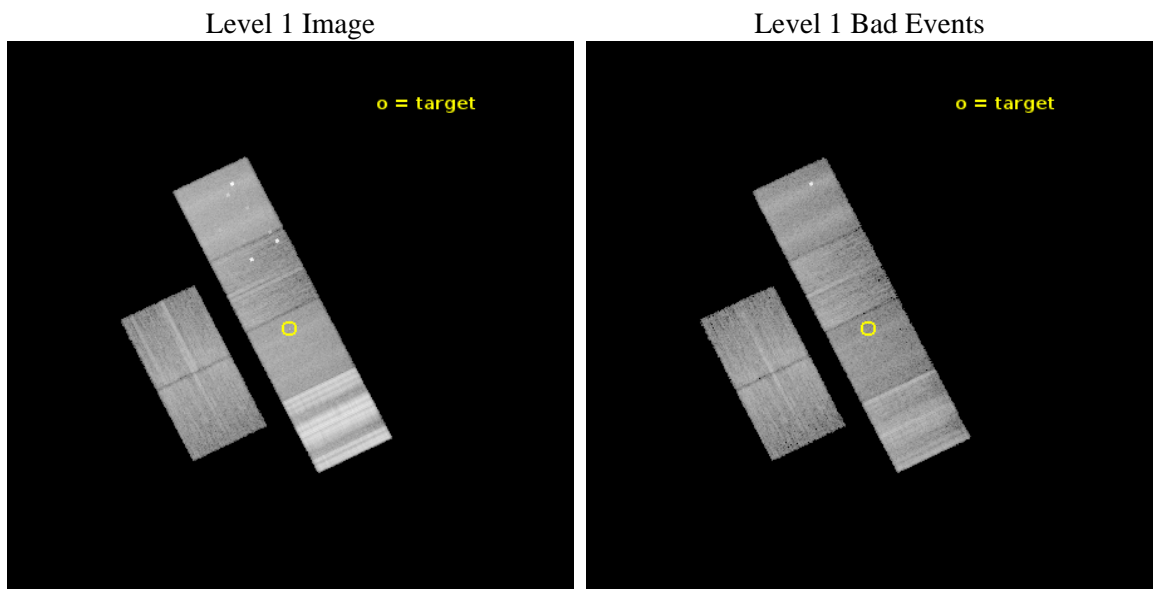
seq_num	901131	Sequence number
obs_id	17235	Observation id
title	A Chandra/HST survey of dark gamma-ray bursts	Proposal title
observer	Prof Andrew Levan	Principal investigator
object	GRB150616A	Source name
dtcycle	0	
cycle	P	events from which exps? Prim/Second/Both
ra_targ	314.71675	Observer's specified target RA [deg]
dec_targ	-53.393889	Observer's specified target Dec [deg]
ra_nom	314.7147558633	Nominal RA [deg]
dec_nom	-53.38860150674	Nominal Dec [deg]
roll_nom	63.564222083445	Nominal Roll [deg]
revision	1	Processing version of data
ontime	14950.400222778	Sum of GTIs [s]
livetime	14761.089253107	Livetime [s]
ontime2	11301.011501551	Sum of GTIs [s]
ontime3	12386.397067904	Sum of GTIs [s]
ontime5	14950.400222778	Sum of GTIs [s]
ontime6	10986.234935403	Sum of GTIs [s]
ontime7	14950.400222778	Sum of GTIs [s]
ontime8	13229.42034483	Sum of GTIs [s]
l2events	171476	Number of level 2 events



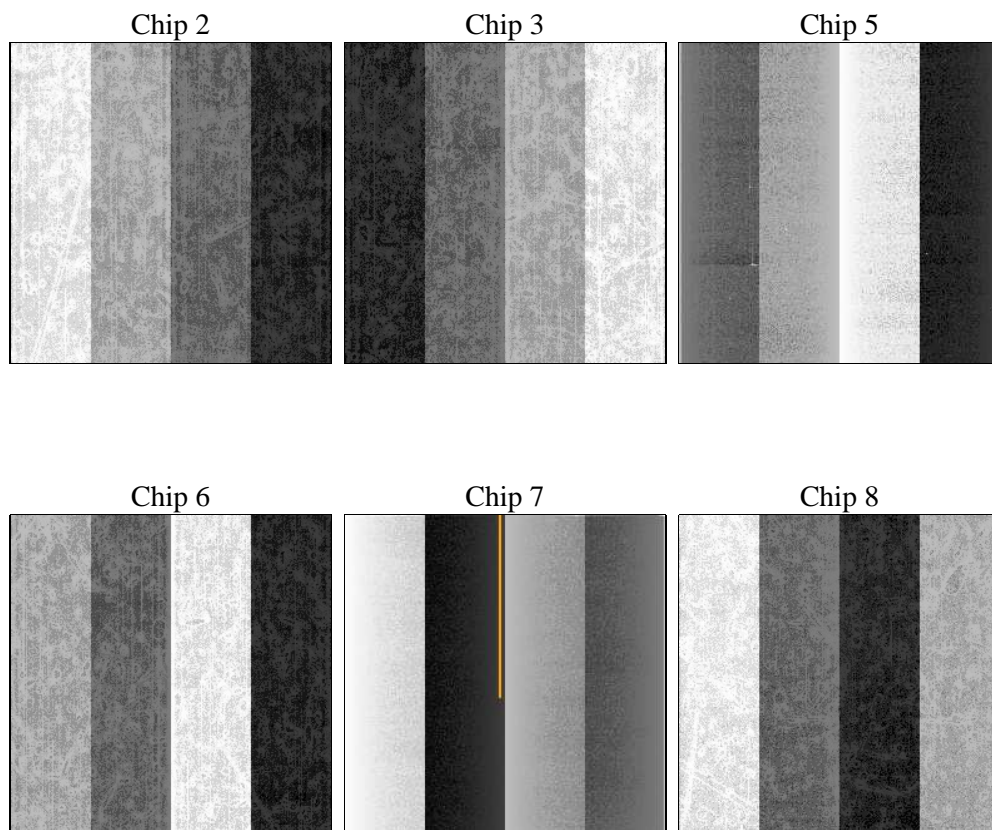
2 OBI

2.1 OBI

2.1.1 Images



2.1.2 Bias



2.1.3 Parameters

obi_num	1	Obi number	sched_exp_time	15000.890000	[s] Scheduled observation exposure time
ascdsver	10.4	Processing system revision	ontime	14950.400222778	Sum of GTIs [s]
caldsver	4.6.7	 	ontime2	11301.011501551	Sum of GTIs [s]
date	2015-06-25T14:23:56	Date and time of file creation	ontime3	12386.397067904	Sum of GTIs [s]
revision	1	Processing version of data	ontime5	14950.400222778	Sum of GTIs [s]
			ontime6	10986.234935403	Sum of GTIs [s]
			ontime7	14950.400222778	Sum of GTIs [s]
			ontime8	13229.42034483	Sum of GTIs [s]
			l1events	1069127	Number of level 1 events

2.1.4 Events

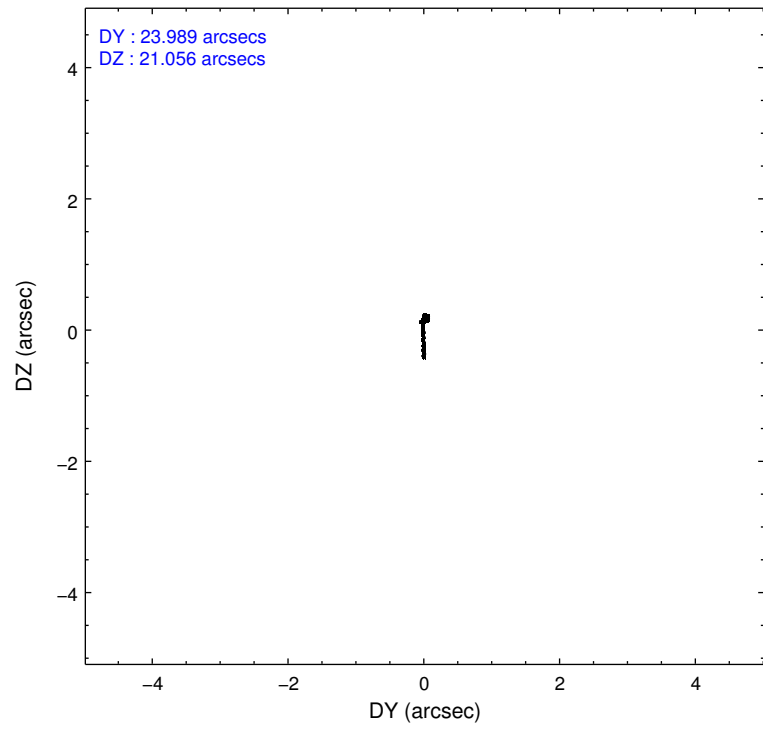
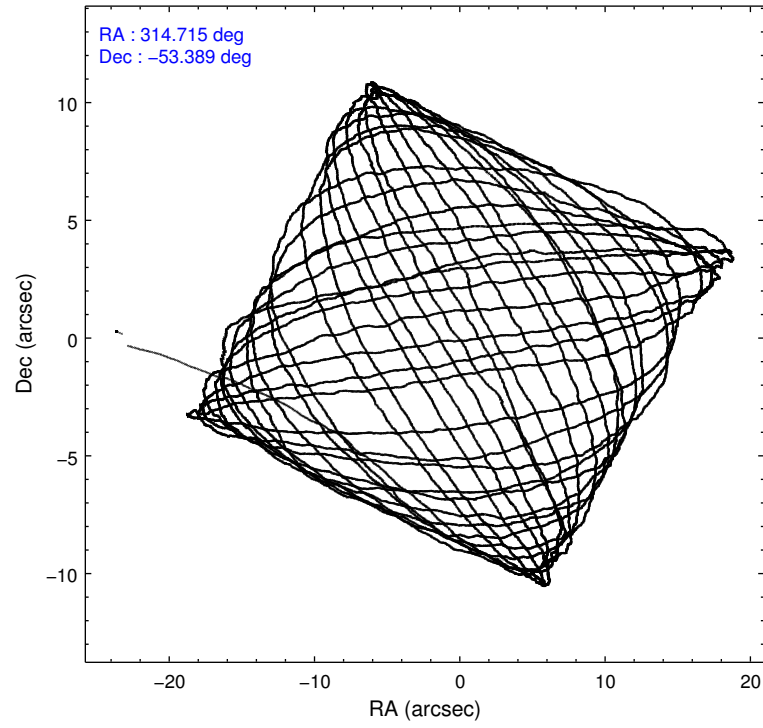
	ccd 2	ccd 3	ccd 5	ccd 6	ccd 7	ccd 8		ccd 2	ccd 3	ccd 5	ccd 6	ccd 7	ccd 8
level 1 events	105288	97649	173892	108369	126900	457029	grade 0 events	7919	3937	9652	10422	6614	118971
rejected events	88345	88673	92062	87771	66124	122229		7%	4%	5%	9%	5%	26%
rejected %	83%	90%	52%	80%	52%	26%	grade 1 events	105	44	893	85	371	954
								0%	0%	0%	0%	0%	0%
							grade 2 events	4728	2172	28448	7235	16658	37144
								4%	2%	16%	6%	13%	8%
							grade 3 events	681	730	5185	731	5156	64378
								0%	0%	2%	0%	4%	14%
							grade 4 events	1809	758	5014	676	5283	59886
								1%	0%	2%	0%	4%	13%
							grade 5 events	2484	2946	11621	2751	11652	8364
								2%	3%	6%	2%	9%	1%
							grade 6 events	1808	1381	33566	1543	27086	54468
								1%	1%	19%	1%	21%	11%
							grade 7 events	85754	85681	79513	84926	54080	112864
								81%	87%	45%	78%	42%	24%

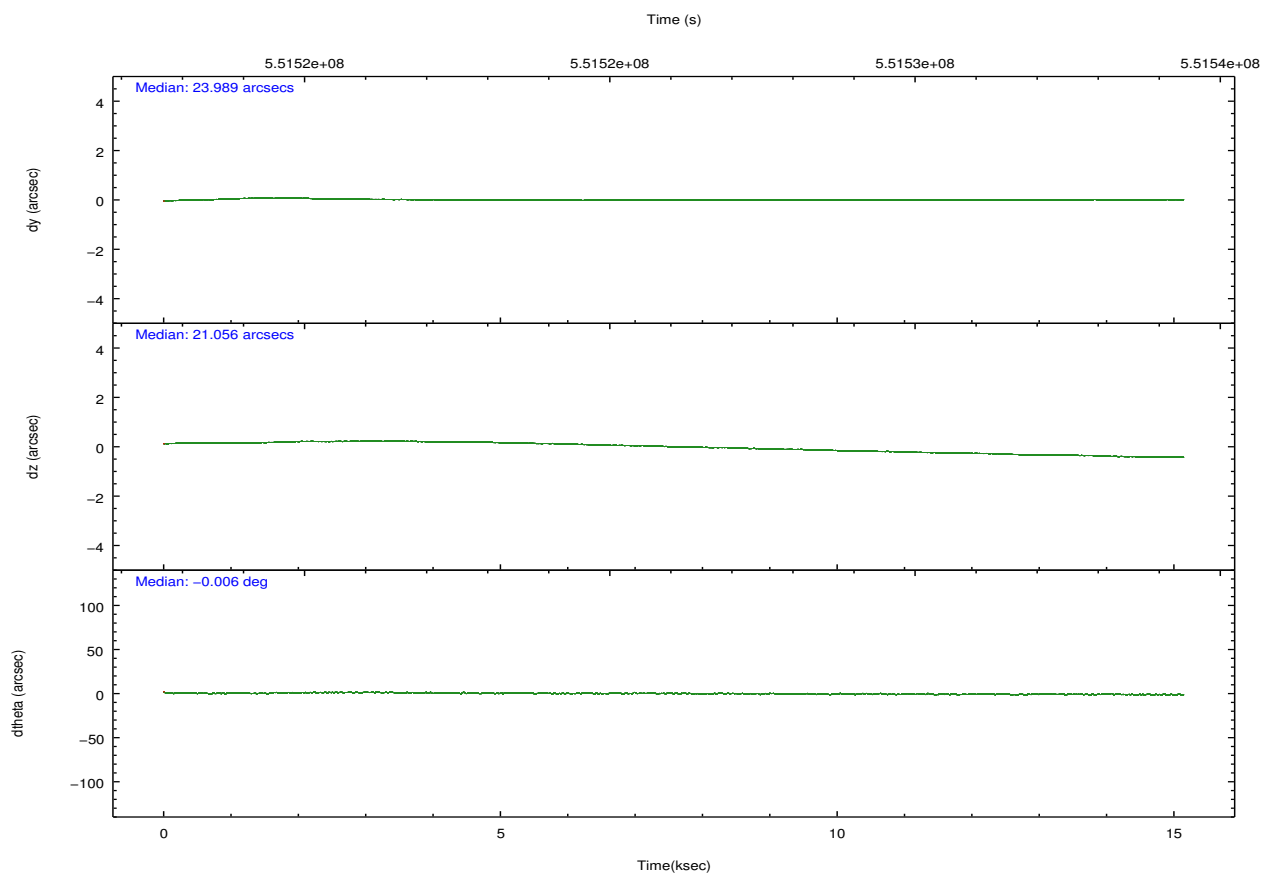
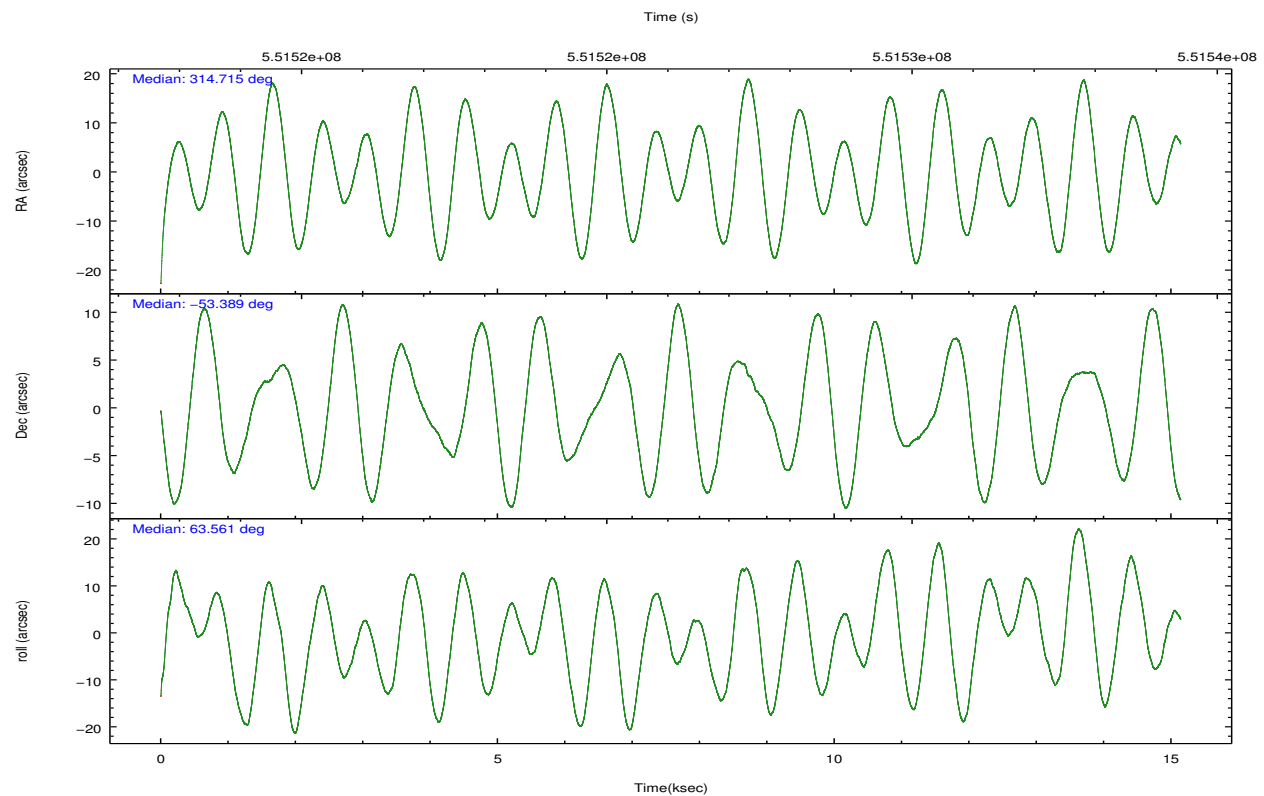
2.2 Compared Parameters

Parameter	Planned	Actual
Instrument	ACIS	ACIS
Detector	ACIS-235678	ACIS-235678
Grating	NONE	NONE
Data mode	VFAINT	VFAINT
Observation mode	POINTING	POINTING
[deg] Pointing RA	314.718239	314.7147558632984
[deg] Pointing Dec	-53.415958	-53.38860150673966
[deg] Pointing Roll	63.410383	63.5642220834447
[mm] SIM focus pos	-0.684267	-0.6828225247311905
[mm] SIM defocus	0	0.001444936568705701
[mm] SIM translation stage pos	-190.132523	-190.1400660498719
[mm] SIM translation stage offset	0	0.00754346686406393
[s] Observation start time (MET)	551518609.184000	551517504.89511
Observation start date	2015-06-24T07:35:42	2015-06-24T07:18:24
[s] Observation end time (MET)	551533610.184000	551533835.7085299
Observation end date	2015-06-24T11:45:43	2015-06-24T11:50:35
Read mode	TIMED	TIMED

Parameter	Planned	Actual
Obspar format version number	7	7
Obspar file type	PREDICTED	ACTUAL
Obspar update status	NONE	UPDATED
CCD I0 on	N	N
CCD I1 on	N	N
CCD I2 on	O2	Y
CCD I3 on	O3	Y
CCD S0 on	N	N
CCD S1 on	O1	Y
CCD S2 on	Y	Y
CCD S3 on	Y	Y
CCD S4 on	O4	Y
CCD S5 on	N	N
Number of optional ACIS chips dropped	0	0
On-chip summing requested	N	N
Subarray requested	NONE	NONE
Alternating exposures requested	N	N
[s] Primary exposure time	0.000000	3.2

2.3 Aspect



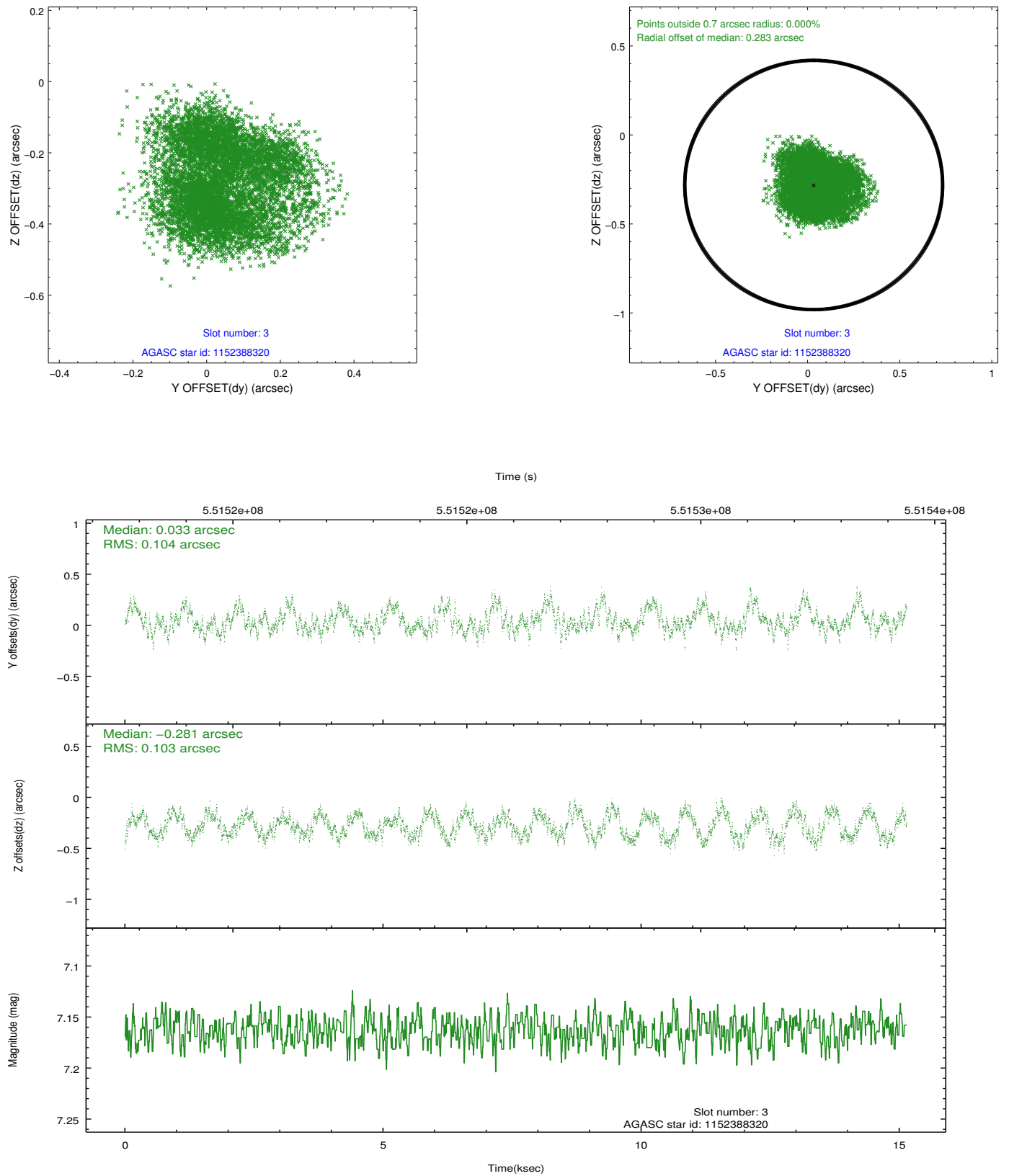


Slot Statistics

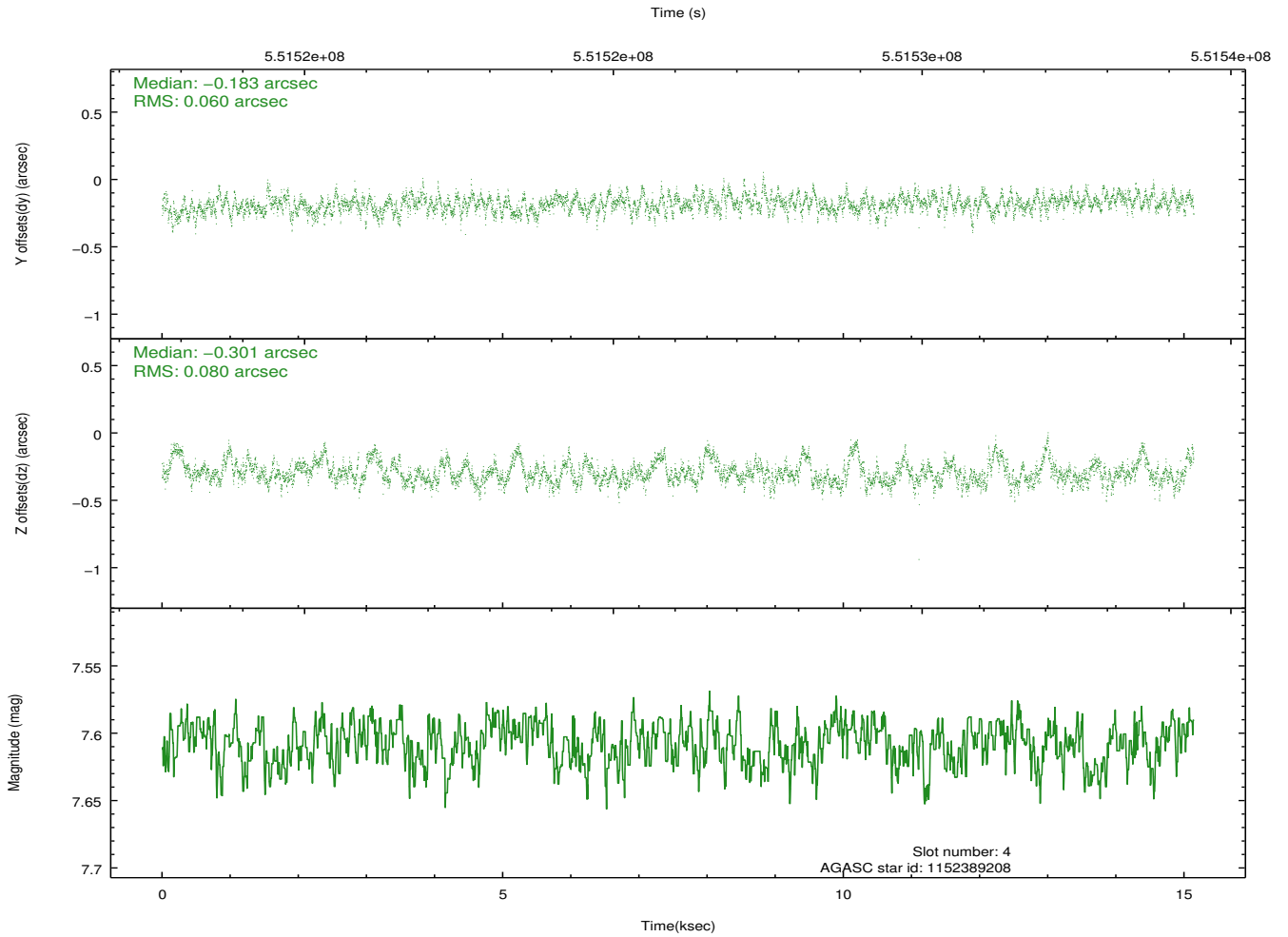
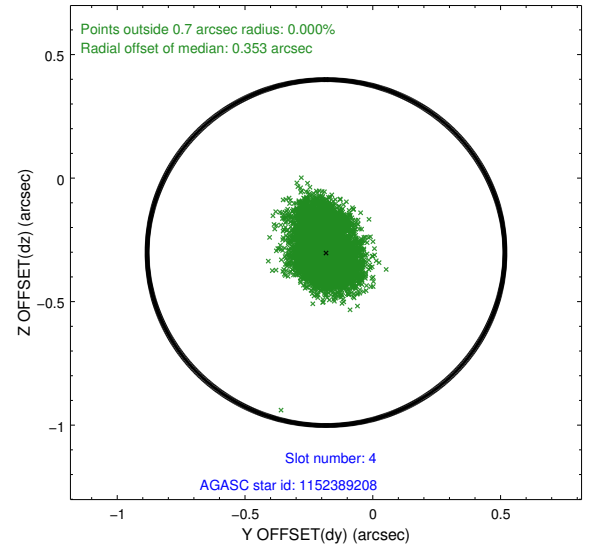
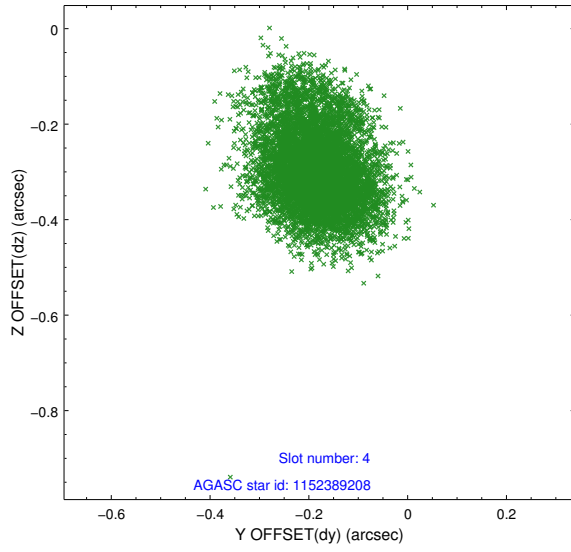
slot	status	used	id	mag	n_pts	med_dy	med_dz	dr1	dr2	ra	dec	mean_y	mean_z
0	FID		ACIS-S-1	7.06	3694	0.019	-0.068	0.012	0.018	0.000000	0.000000	918.86	-1738.25
1	FID		ACIS-S-4	7.07	3694	0.336	0.043	0.008	0.014	0.000000	0.000000	2136.72	165.72
2	FID		ACIS-S-5	7.09	3693	-0.383	0.038	0.008	0.015	0.000000	0.000000	-1830.06	159.60
3	GUIDE	used	1152388320	7.16	7387	0.033	-0.281	0.160	0.238	313.836382	-53.589300	-1411.80	1400.21
4	GUIDE	used	1152389208	7.61	7387	-0.183	-0.301	0.104	0.180	313.600932	-53.589516	-1644.44	1846.74
5	GUIDE	used	1152391960	8.71	7386	0.449	0.440	0.116	0.186	314.900202	-53.997363	-1699.38	-1280.81
6	GUIDE	used	1152395208	9.02	7384	-0.192	0.372	0.127	0.207	315.312101	-53.852077	-844.44	-1832.63
7	GUIDE	used	1152385648	9.68	7366	-0.097	-0.231	0.246	0.399	314.269550	-52.566840	2291.15	2244.61

2.4 Star Slots

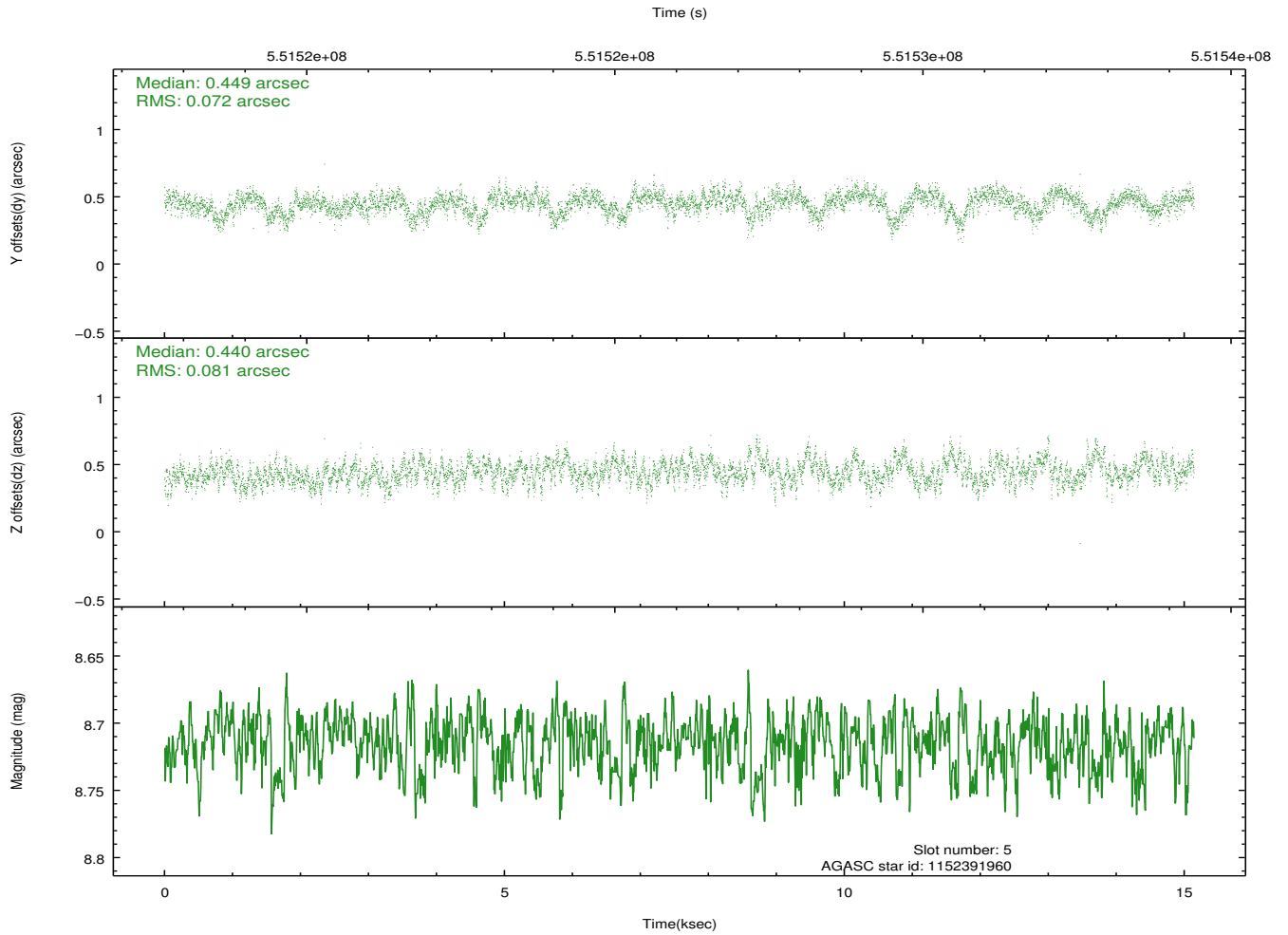
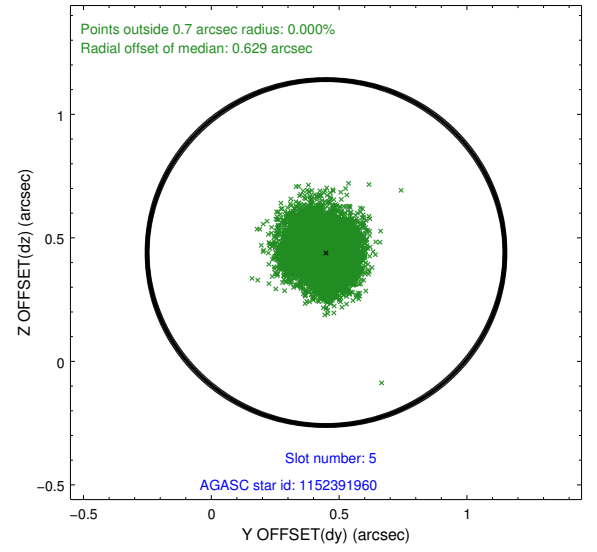
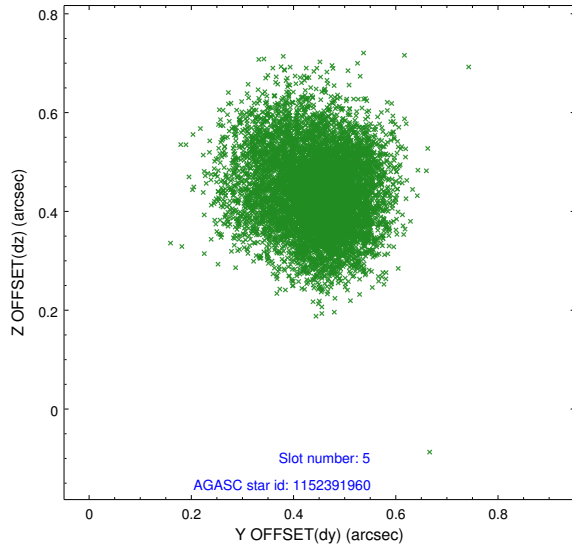
2.4.1 Slot 3



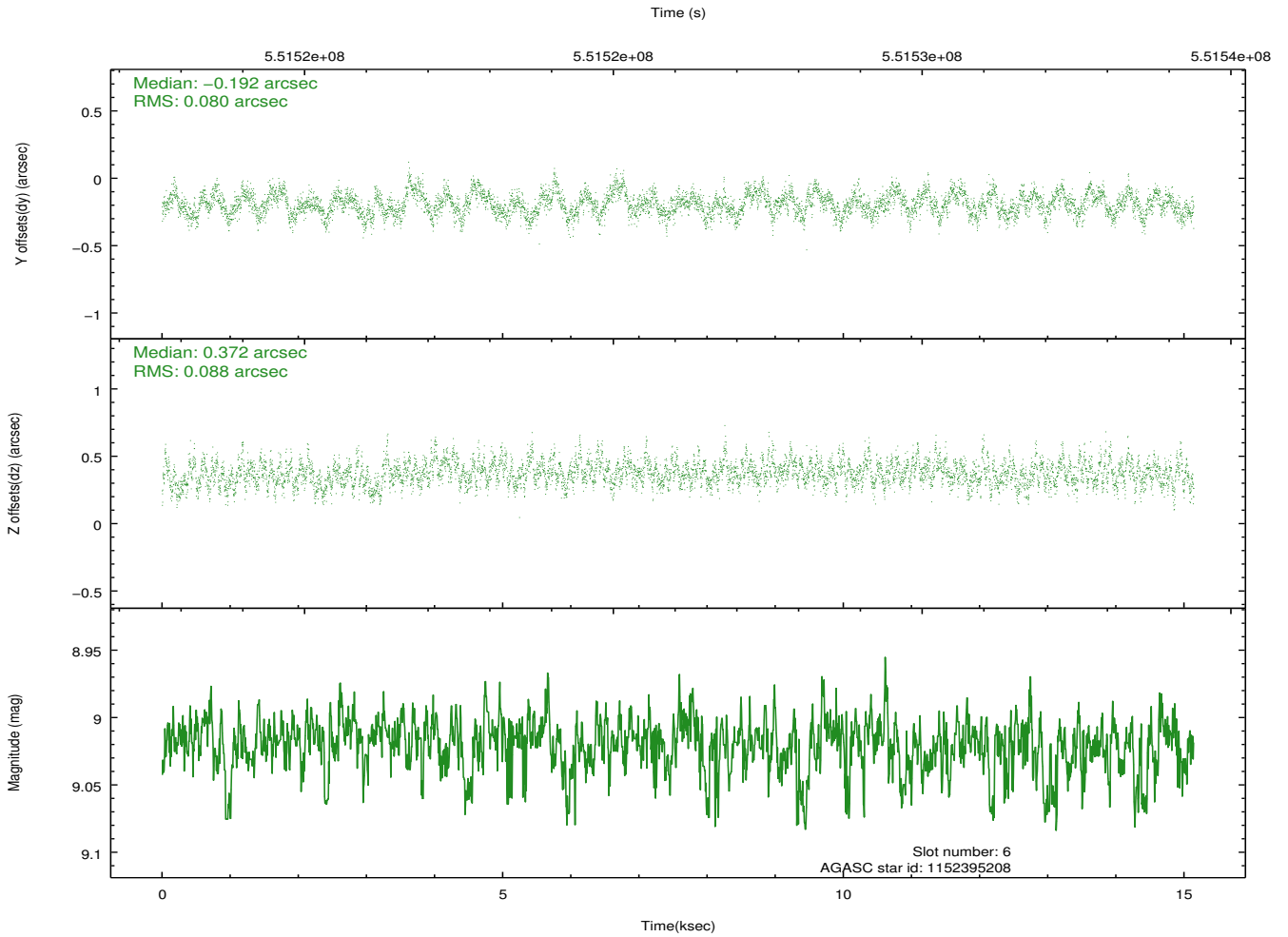
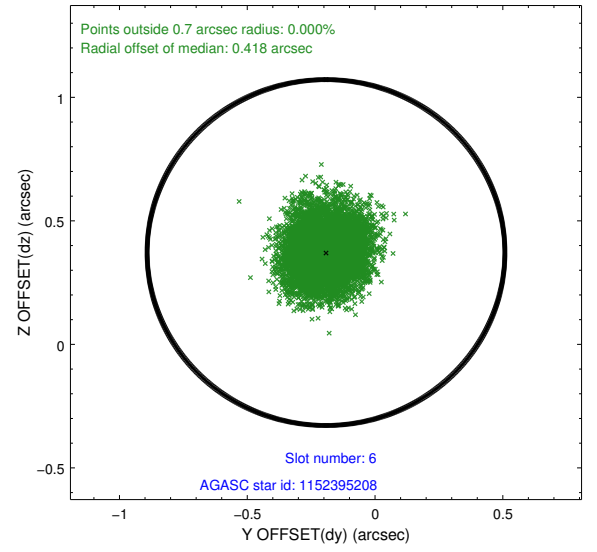
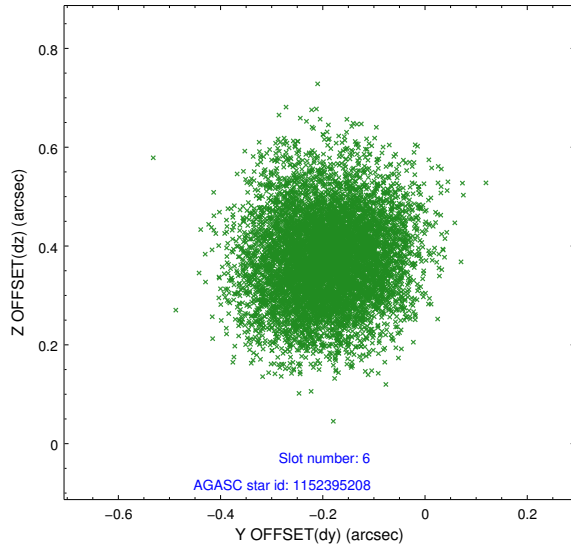
2.4.2 Slot 4



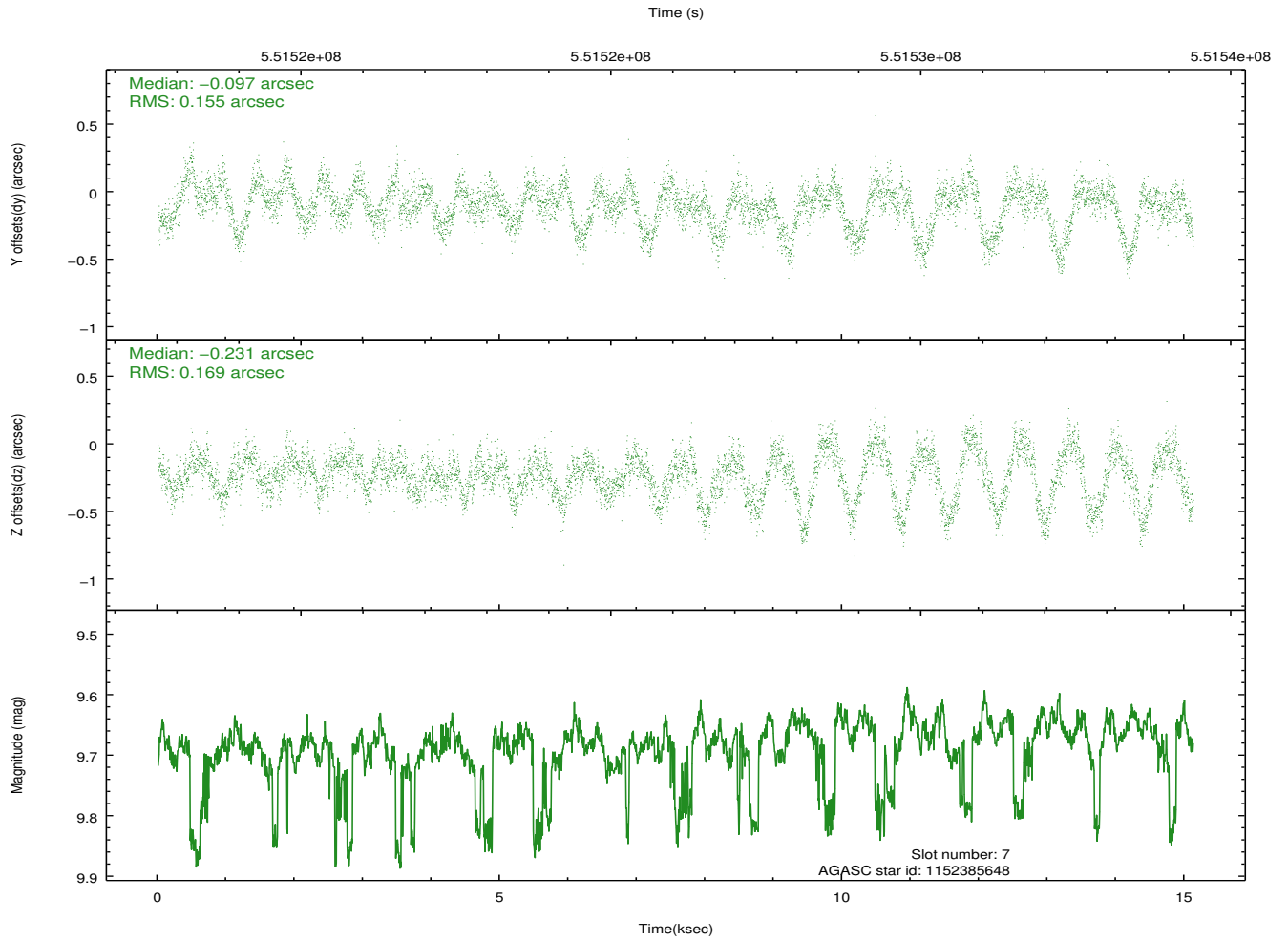
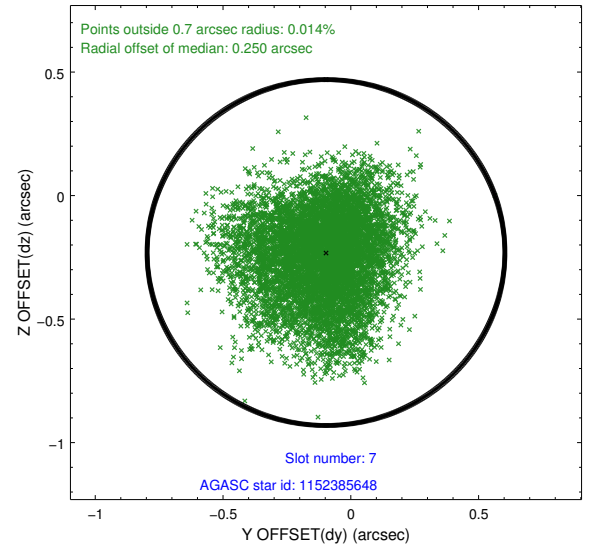
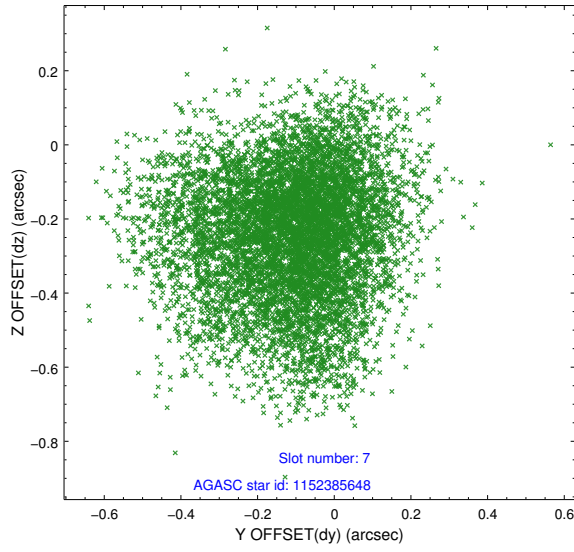
2.4.3 Slot 5



2.4.4 Slot 6

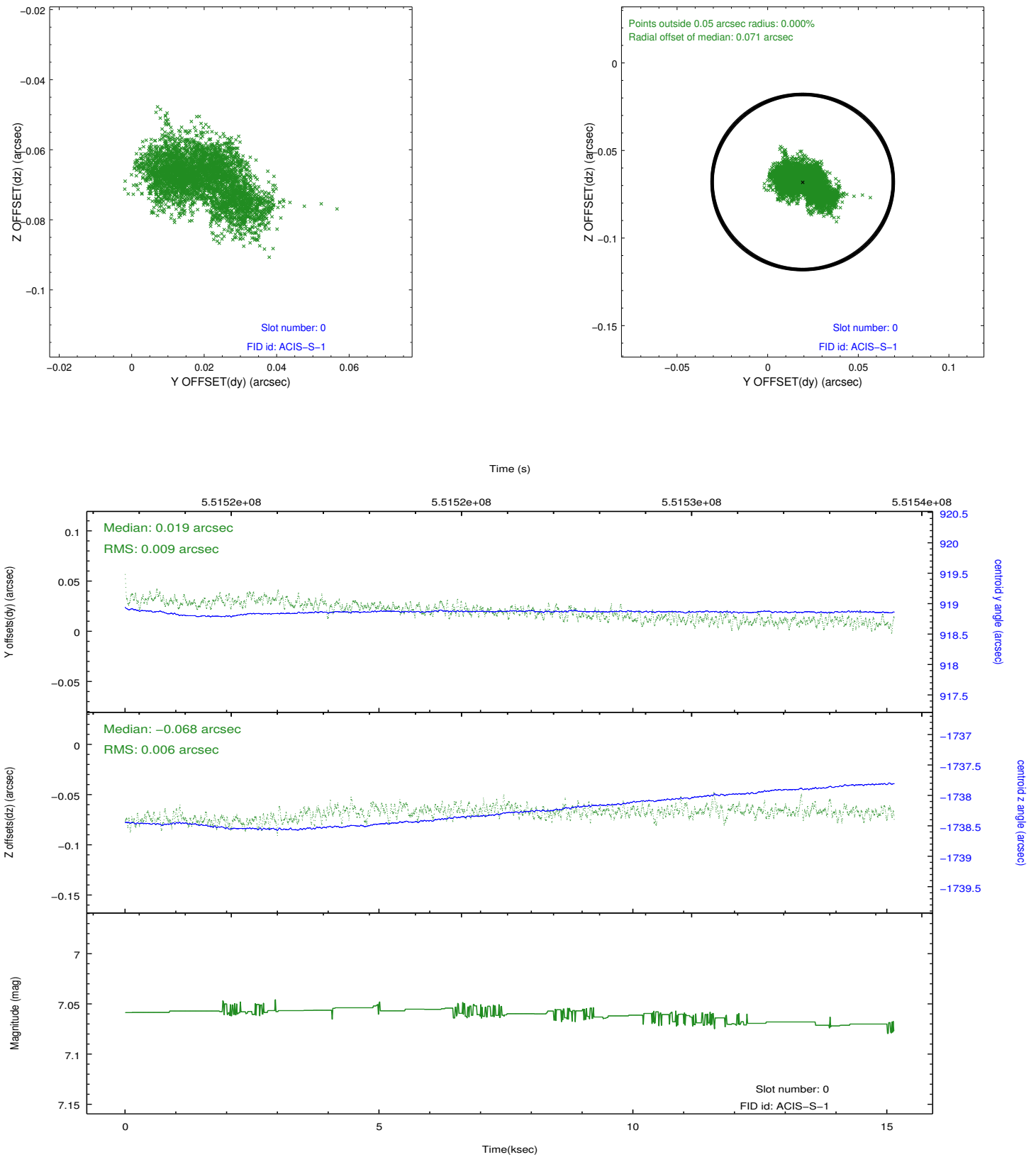


2.4.5 Slot 7

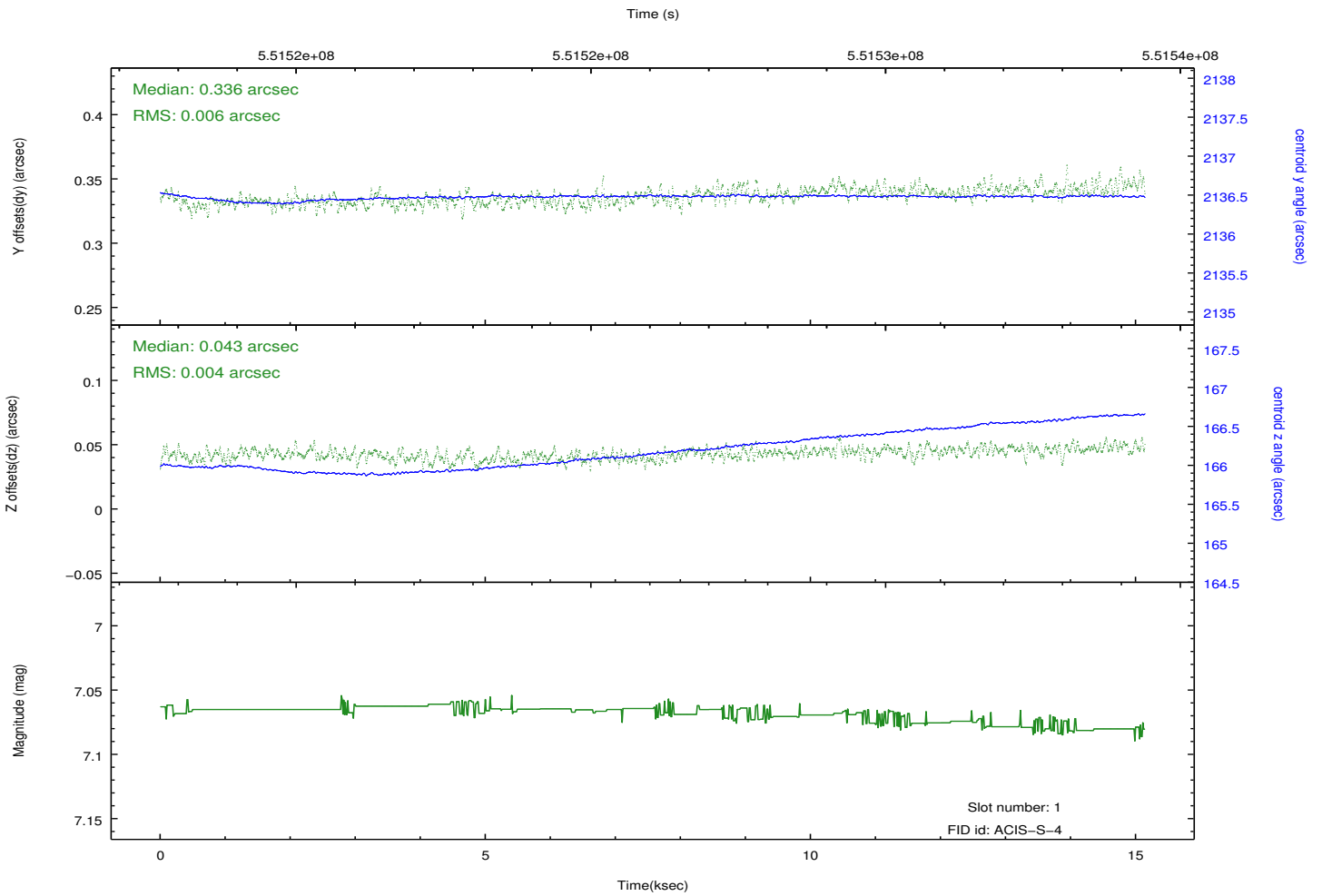
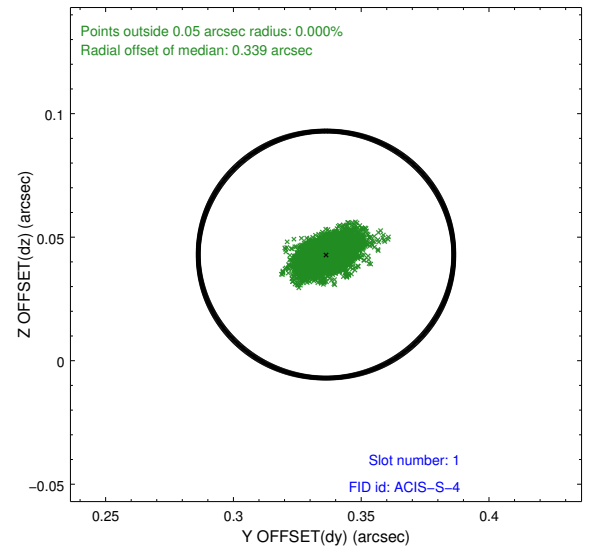
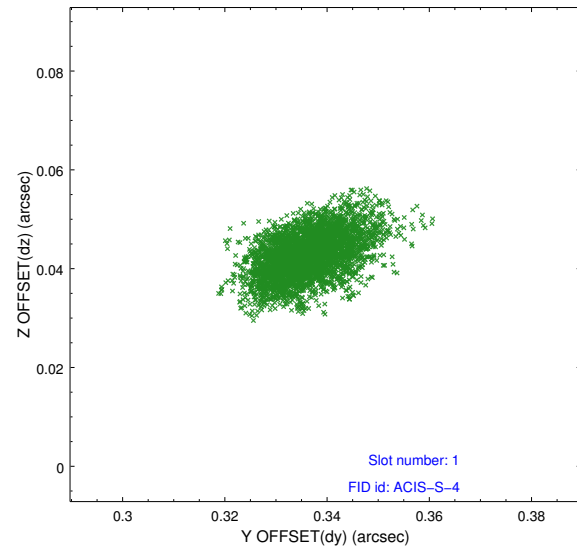


2.5 FID Slots

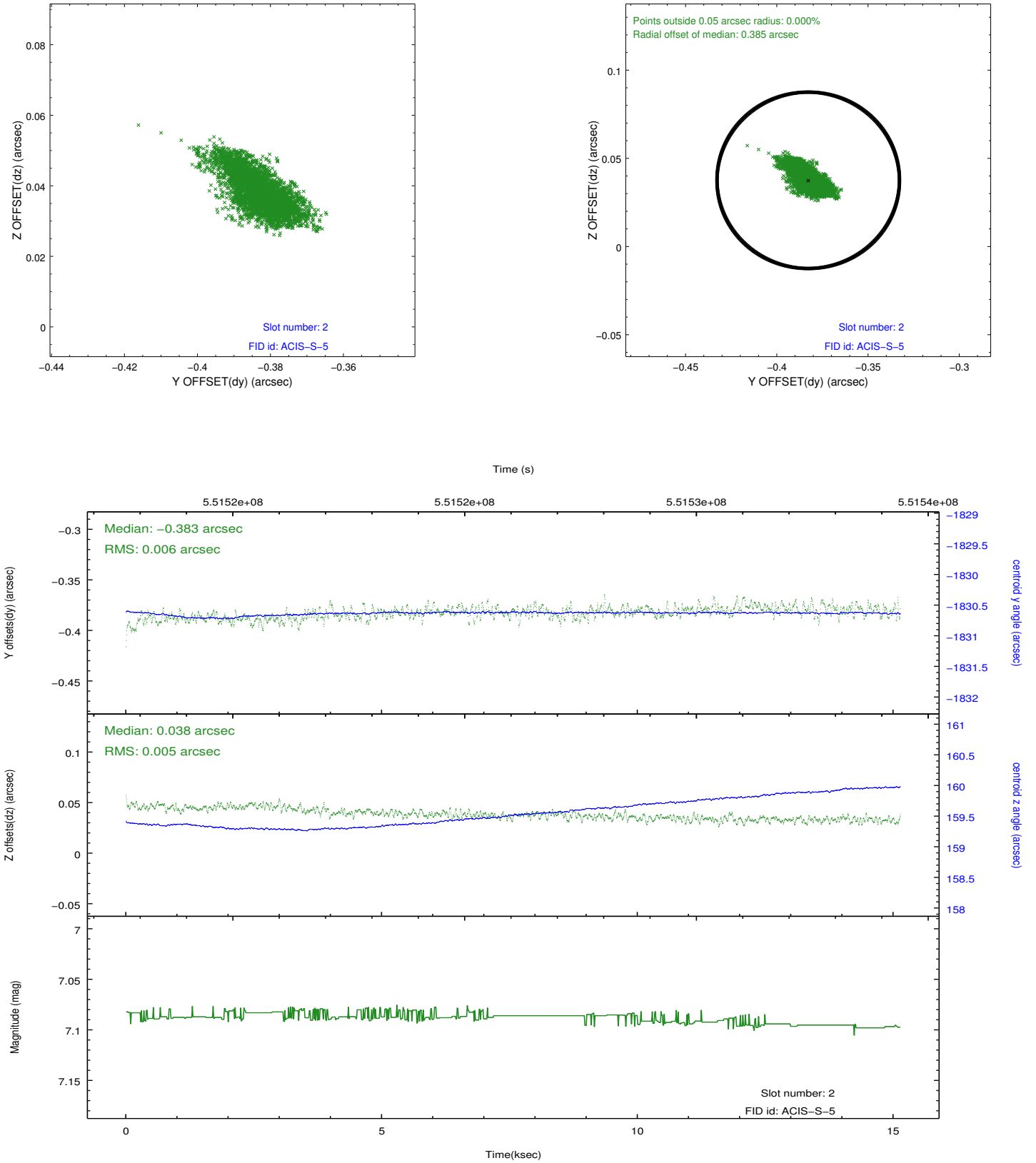
2.5.1 Slot 0



2.5.2 Slot 1



2.5.3 Slot 2



A Summary

A.1 Status

V&V Scientist	Beth Sundheim
V&V Date (YYYY-MM-DD)	2015.06.25
V&V Edition	1
V&V Disposition and Status	OK
V&V Charge Time	14.950400222778

A.2 Comments

Joint proposal with HST.

Charge time is set to the scheduled time for this observation, although the ontime for several chips is significantly less due to telemetry saturation resulting from the high radiation environment.