

# V&V Reference Report

## L2 ASCDS Version : 7.6.9

Observation 1685 - L2 Version 002  
Chandra X-Ray Center

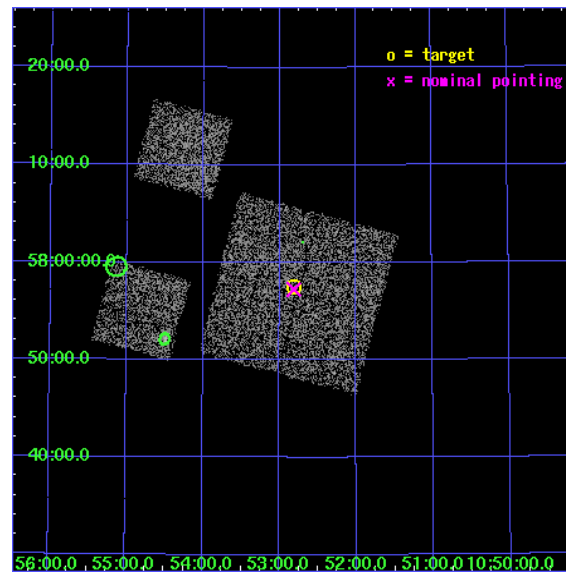
L2 Processing Date : Dec 11 2006

## Contents

<b>1</b>	<b>Front</b>	<b>2</b>
<b>2</b>	<b>OBI</b>	<b>3</b>
2.1	OBI . . . . .	3
2.1.1	Images . . . . .	3
2.1.2	Bias . . . . .	3
2.1.3	Parameters . . . . .	4
2.1.4	Events . . . . .	4
2.2	Compared Parameters . . . . .	5
2.3	Aspect . . . . .	6
2.4	Star Slots . . . . .	9
2.4.1	Slot 3 . . . . .	9
2.4.2	Slot 4 . . . . .	10
2.4.3	Slot 5 . . . . .	11
2.4.4	Slot 6 . . . . .	12
2.4.5	Slot 7 . . . . .	13
2.5	FID Slots . . . . .	14
2.5.1	Slot 0 . . . . .	14
2.5.2	Slot 1 . . . . .	15
2.5.3	Slot 2 . . . . .	16
<b>3</b>	<b>Point Sources</b>	<b>17</b>
<b>A</b>	<b>Summary</b>	<b>18</b>
A.1	Status . . . . .	18
A.2	Comments . . . . .	18

# 1 Front

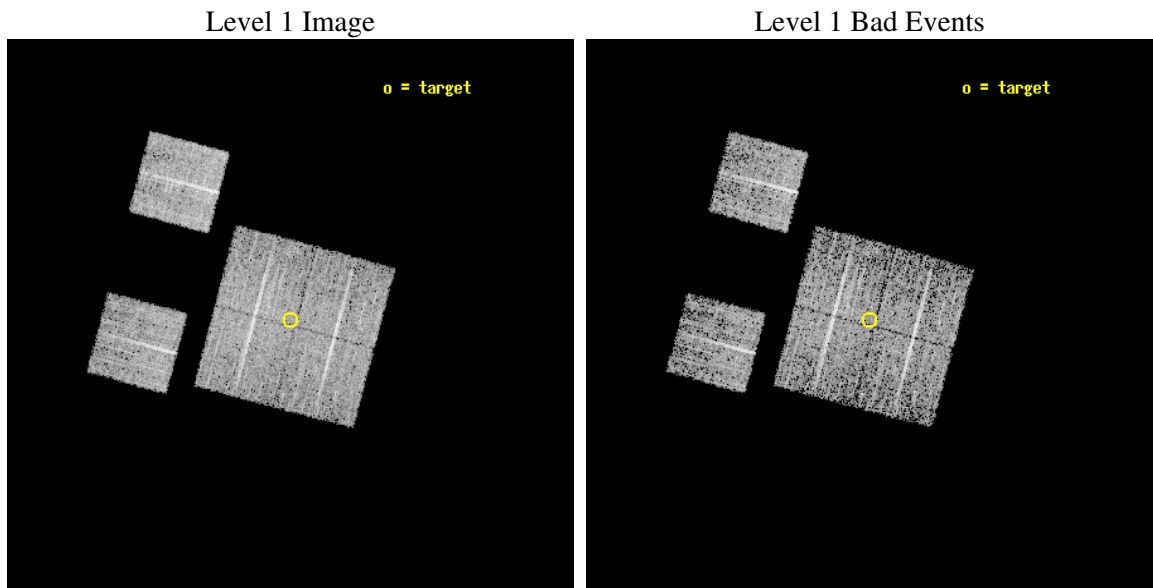
seq_num	900044
obs_id	1685
title	LOCKMAN HOLE SHALLOW SURVEY
observer	Dr. Stephen Murray
object	LOCKMAN HOLE #20
dtcycle	0
cycle	P
ra_targ	163.204167
dec_targ	57.958889
ra_nom	163.20276904107
dec_nom	57.954177372508
roll_nom	284.95276925243
revision	3
ontime	4758.4000044316
livetime	4698.146278411
ontime0	4758.4000044316
ontime1	4758.4000044316
ontime2	4758.4000044316
ontime3	4758.4000044316
ontime6	4758.4000044316
ontime8	4758.4000044316
l2events	18285



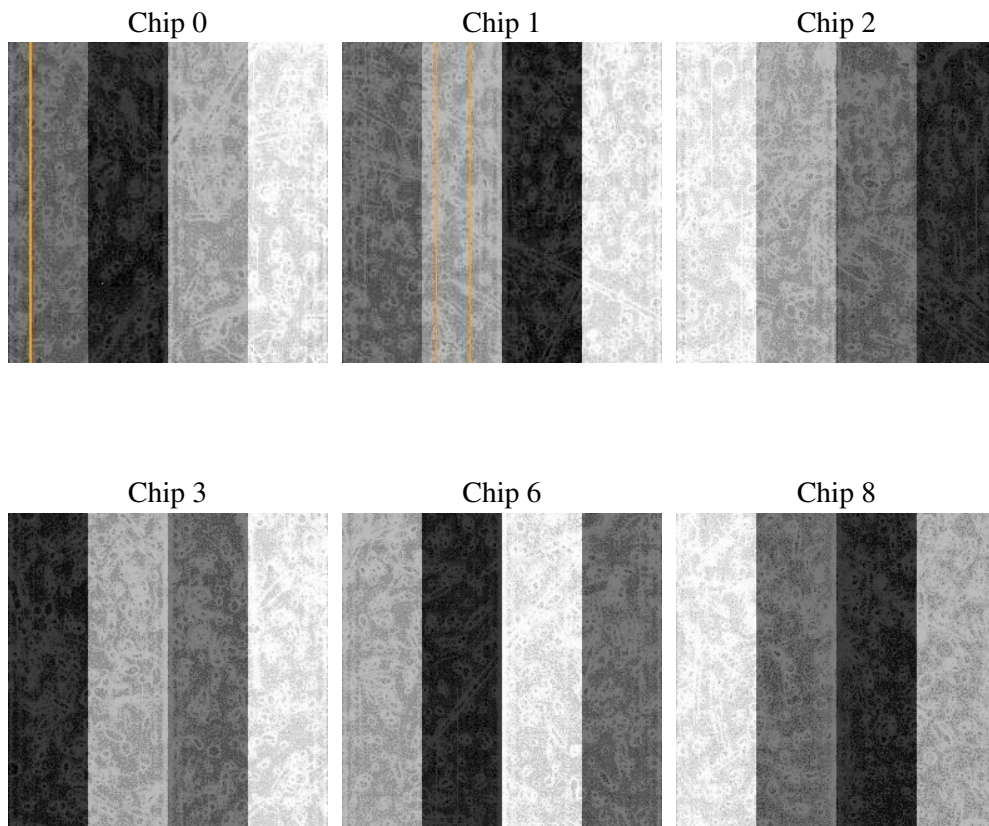
## 2 OBI

### 2.1 OBI

#### 2.1.1 Images



#### 2.1.2 Bias



### 2.1.3 Parameters

obi_num	0
ascdsver	7.6.9
caldsver	3.2.4
date	2006-12-11T17:07:34
revision	3

sched_exp_time	5000.000000
ontime	4764.2656060755
ontime0	4764.2656060755
ontime1	4764.2656060755
ontime2	4764.2656060755
ontime3	4764.2656060755
ontime6	4764.2656060755
ontime8	4764.2656060755
l1events	193420

### 2.1.4 Events

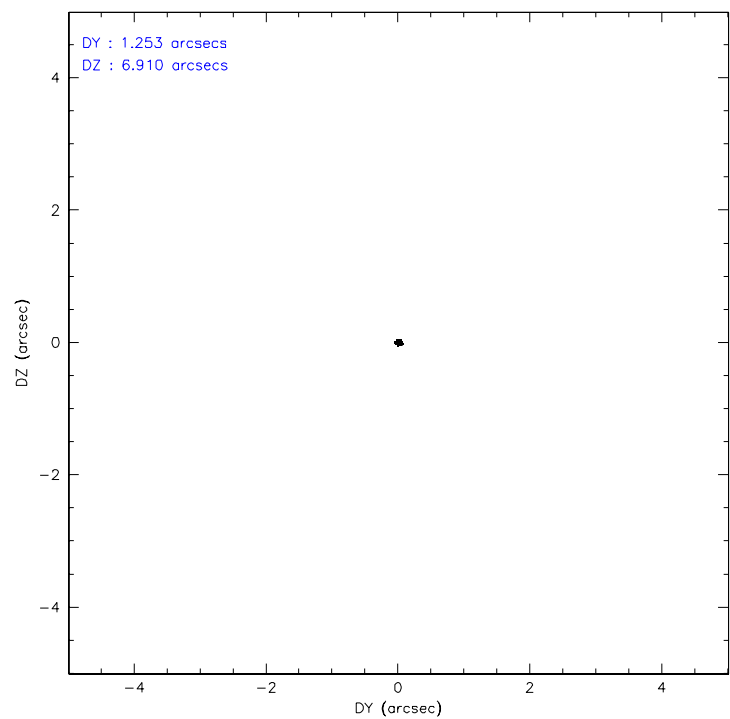
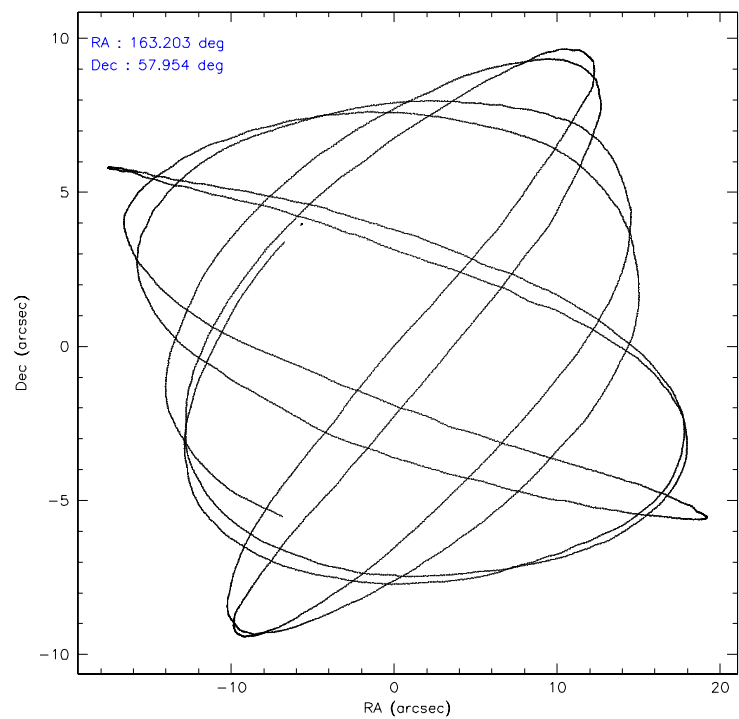
	ccd 0	ccd 1	ccd 2	ccd 3	ccd 6	ccd 8
level 1 events	28761	29437	31173	31299	31201	41549
rejected events	25251	25761	27688	27914	27844	33658
rejected %	87%	87%	88%	89%	89%	81%

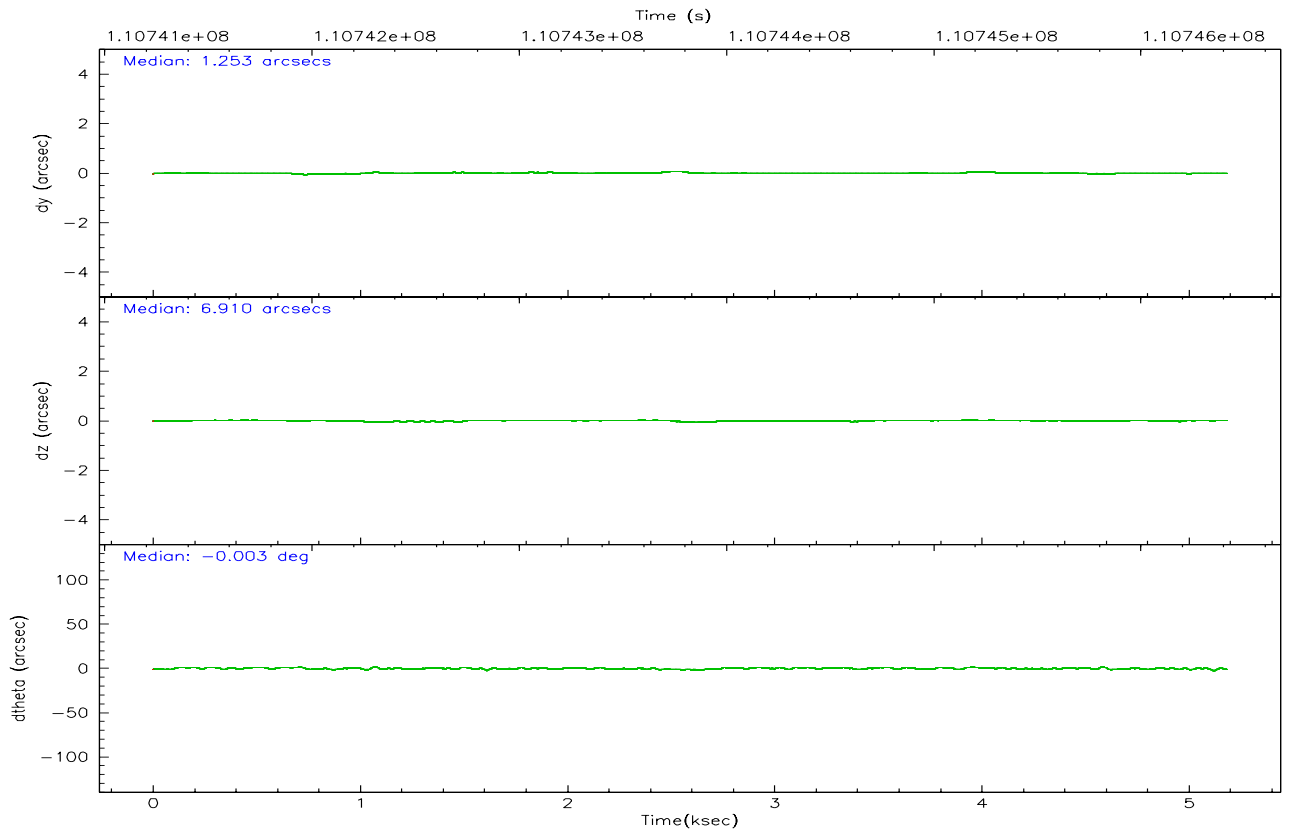
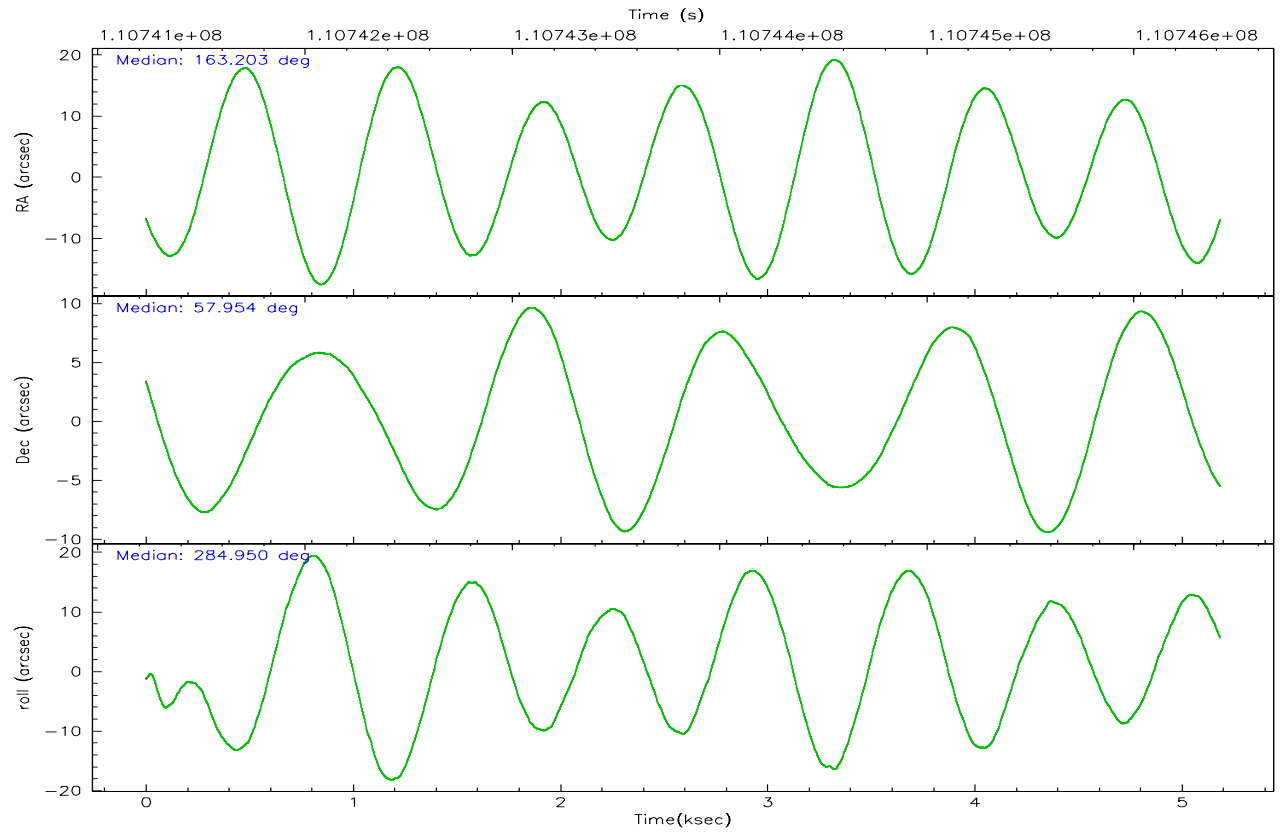
	ccd 0	ccd 1	ccd 2	ccd 3	ccd 6	ccd 8
grade 0 events	1423	1477	1499	1457	1371	2537
	4%	5%	4%	4%	4%	6%
grade 1 events	9	12	9	10	11	33
	0%	0%	0%	0%	0%	0%
grade 2 events	754	784	735	655	692	1643
	2%	2%	2%	2%	2%	3%
grade 3 events	366	375	307	322	345	876
	1%	1%	0%	1%	1%	2%
grade 4 events	342	356	340	294	326	840
	1%	1%	1%	0%	1%	2%
grade 5 events	1197	1190	971	1192	1280	1706
	4%	4%	3%	3%	4%	4%
grade 6 events	629	693	608	665	630	1997
	2%	2%	1%	2%	2%	4%
grade 7 events	24041	24550	26704	26704	26546	31917
	83%	83%	85%	85%	85%	76%

## 2.2 Compared Parameters

Parameter	Planned	Actual	Parameter	Planned	Actual
Instrument	ACIS	ACIS	Obspar format version number	6	6
Detector	ACIS-012368	ACIS-012368	Obspar file type	PREDICTED	ACTUAL
Grating	NONE	NONE	Obspar update status	NONE	UPDATED
Data mode	FAINT	FAINT	Number of optional ACIS chips dropped	0	0
Observation mode	POINTING	POINTING	On-chip summing requested	N	N
Pointing RA	163.166318	163.2027690410693	Subarray requested	NONE	NONE
Pointing Dec	57.973584	57.95417737250845	Alternating exposures requested	N	N
Pointing Roll	284.774985	284.9527692524297	Primary exposure time	0.000000	3.2
SIM focus pos (mm)	-0.782348	-0.7809083437167272			
SIM defocus (mm)	0	0.001439871863259334			
SIM translation stage pos (mm)	-233.592463	-233.5874344608287			
SIM translation stage offset (mm)	0	-0.005018542100998502			
Observation start time	110741415.184000	110741039.77262			
Observation start date	2001-07-05T17:29:11	2001-07-05T17:23:59			
Observation end time	110746415.184000	110746562.98534			
Observation end date	2001-07-05T18:52:31	2001-07-05T18:56:02			
Read mode	TIMED	TIMED			

## 2.3 Aspect





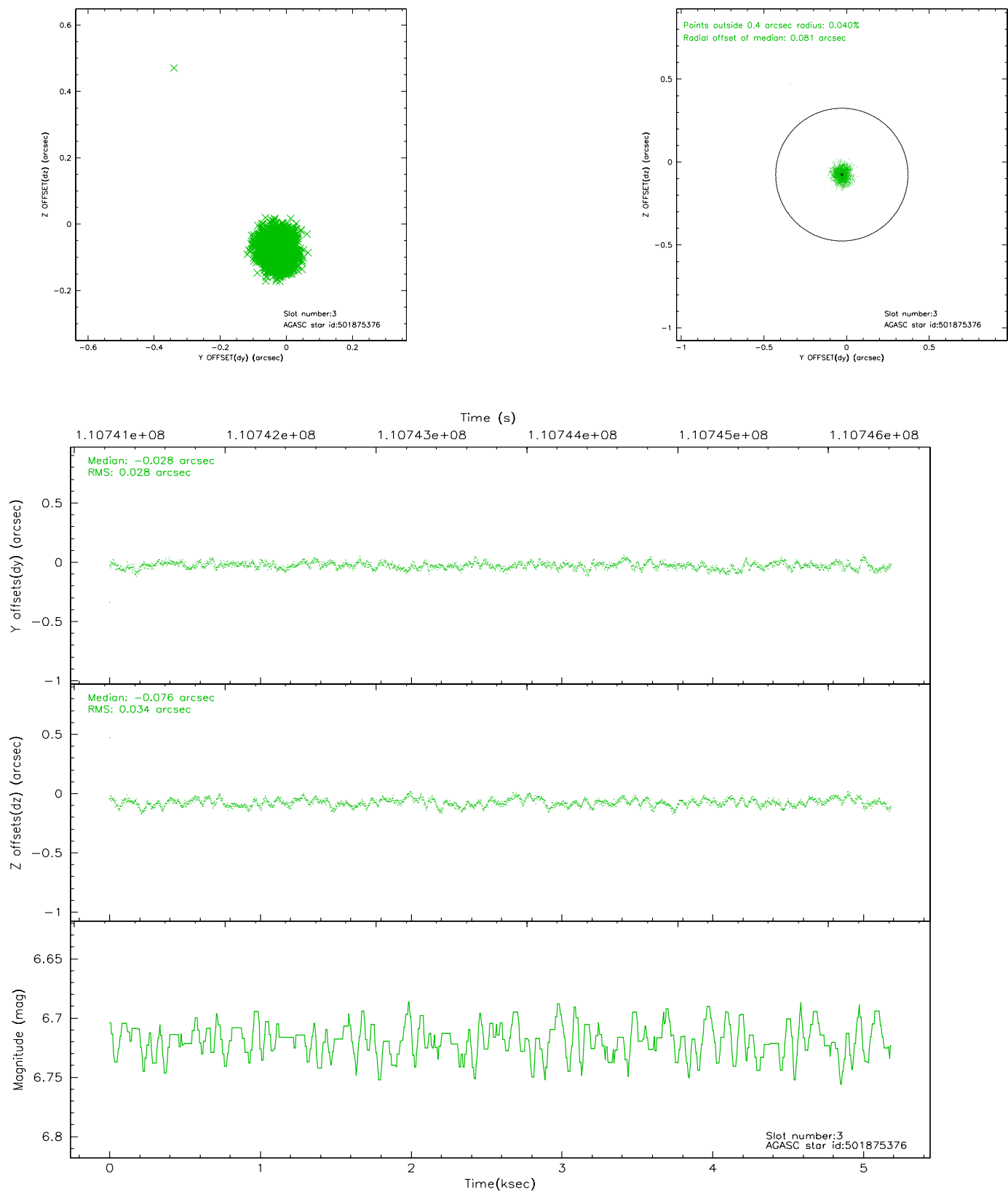
### Slot Statistics

slot	status	id	mag	n_pts	med_dy	med_dz	dr1	dr2	ra	dec	mean_y	mean_z
0	FID	ACIS-I-2	7.15	1265	-0.019	-0.045	0.008	0.016	0.000000	0.000000	-755.60	-836.72
1	FID	ACIS-I-4	7.18	1265	-0.095	0.033	0.005	0.009	0.000000	0.000000	2157.84	1068.98
2	FID	ACIS-I-5	7.23	1265	0.014	0.081	0.008	0.015	0.000000	0.000000	-1807.91	1068.16
3	GUIDE	501875376	6.72	2530	-0.028	-0.076	0.045	0.072	164.111621	57.502963	2092.03	1339.09
4	GUIDE	501877664	9.07	2529	-0.002	0.025	0.080	0.135	163.740288	58.664193	-2133.69	1674.85
5	GUIDE	501877264	9.30	2529	0.087	0.162	0.089	0.168	163.254394	57.702218	986.87	-84.33
6	GUIDE	501875280	9.88	2530	-0.064	0.000	0.102	0.167	161.800922	58.322389	-1897.42	-2168.97
7	GUIDE	501875064	9.11	2529	-0.007	-0.110	0.069	0.114	163.017696	58.369846	-1452.00	91.21

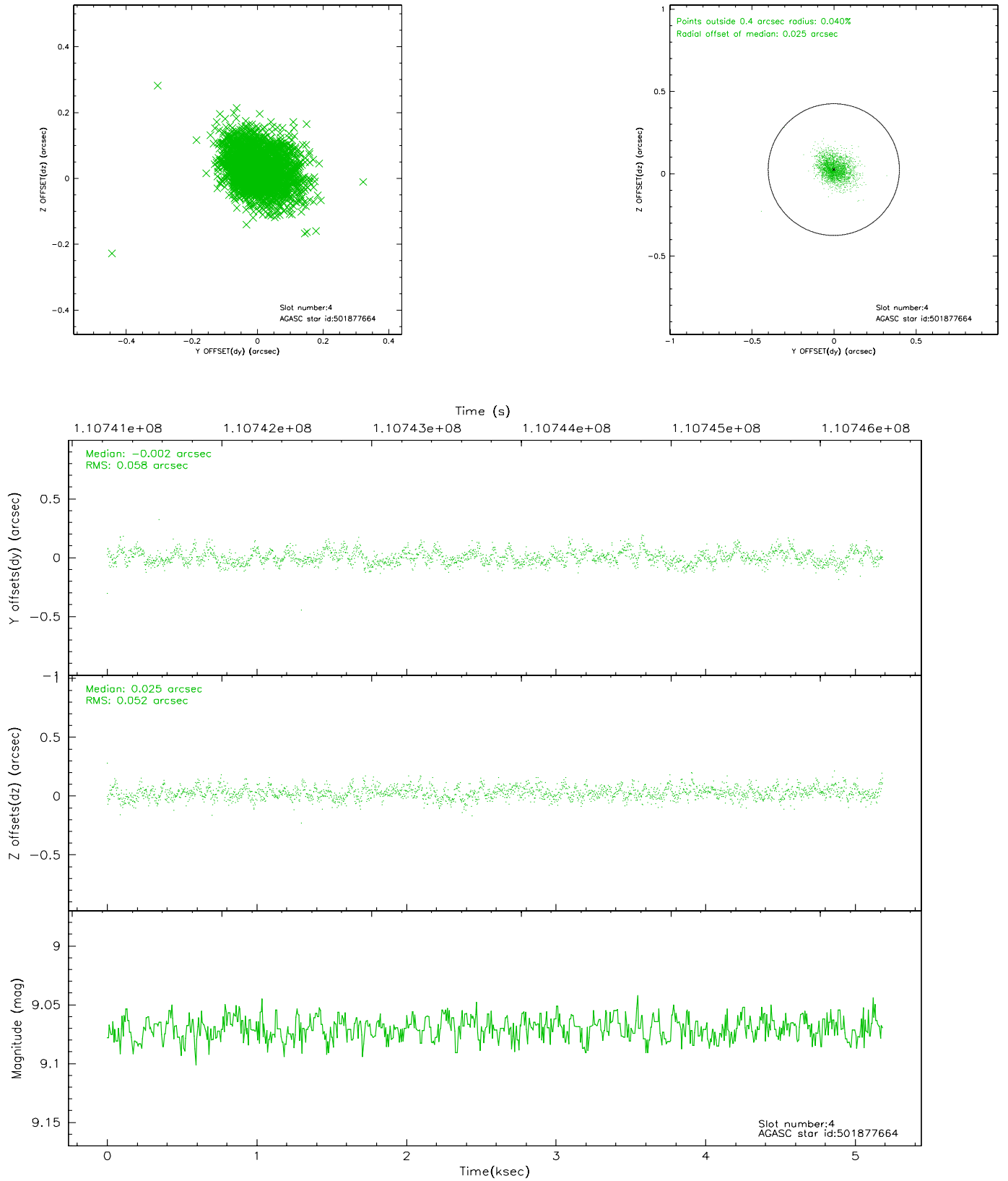


## 2.4 Star Slots

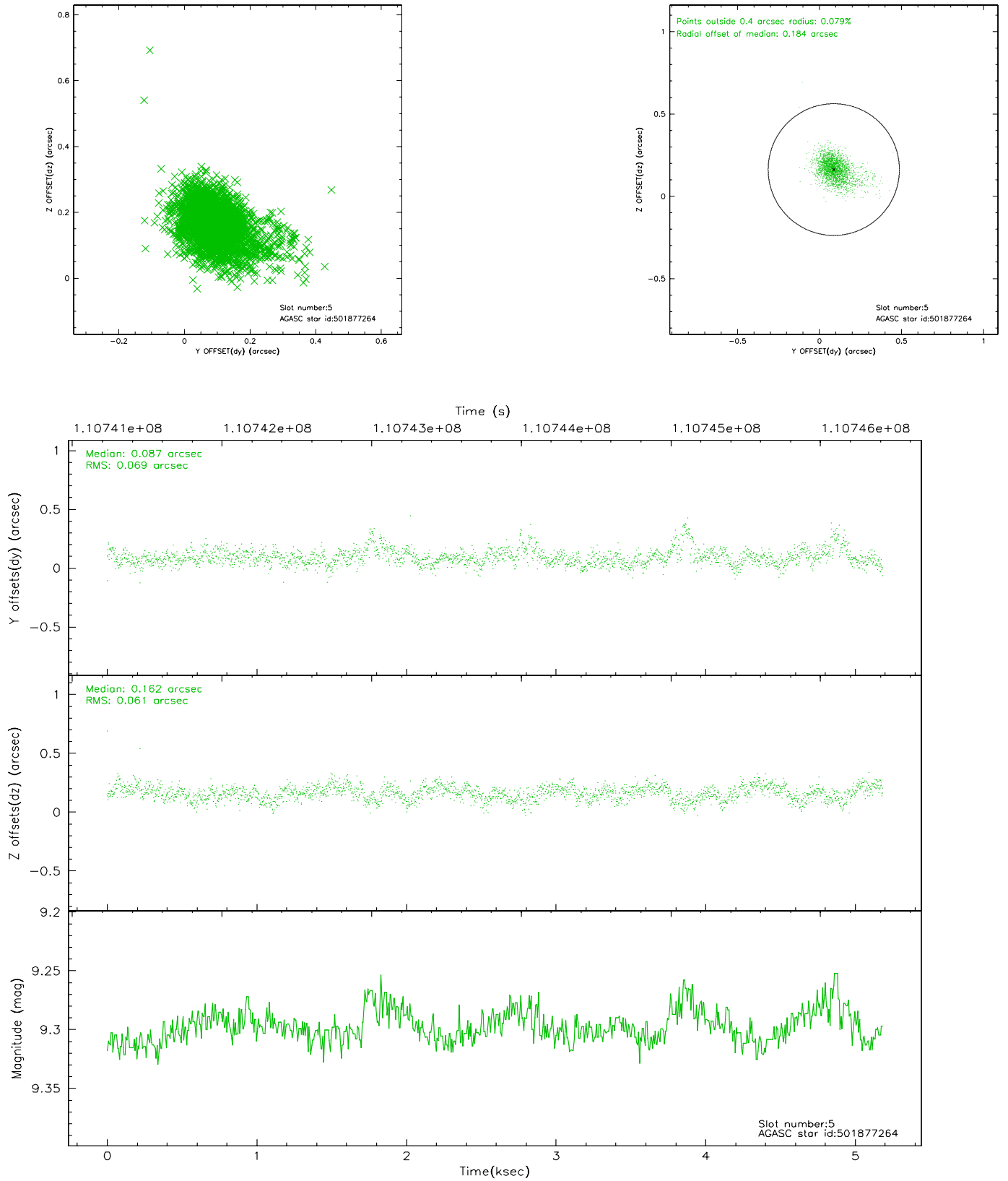
### 2.4.1 Slot 3



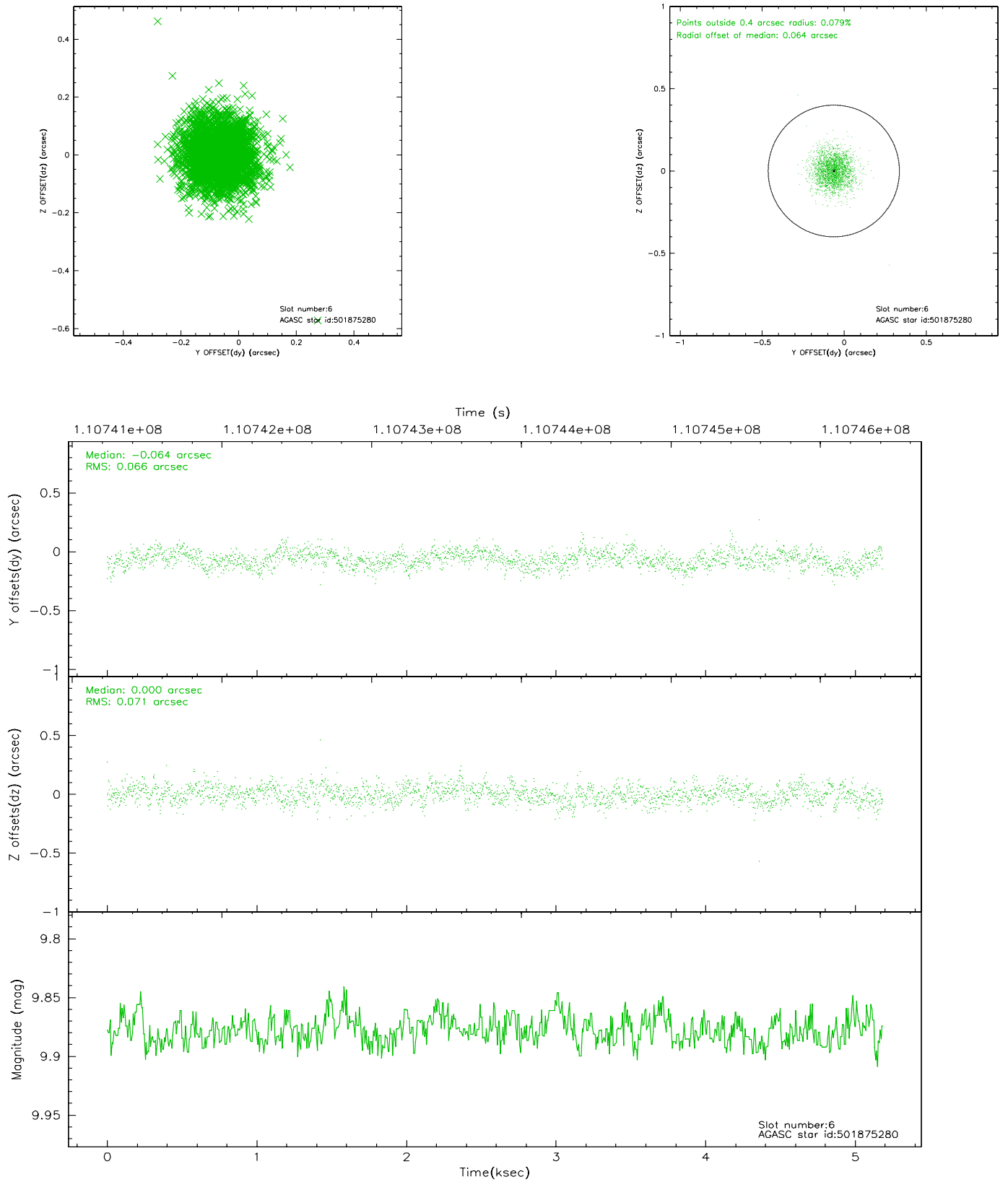
## 2.4.2 Slot 4



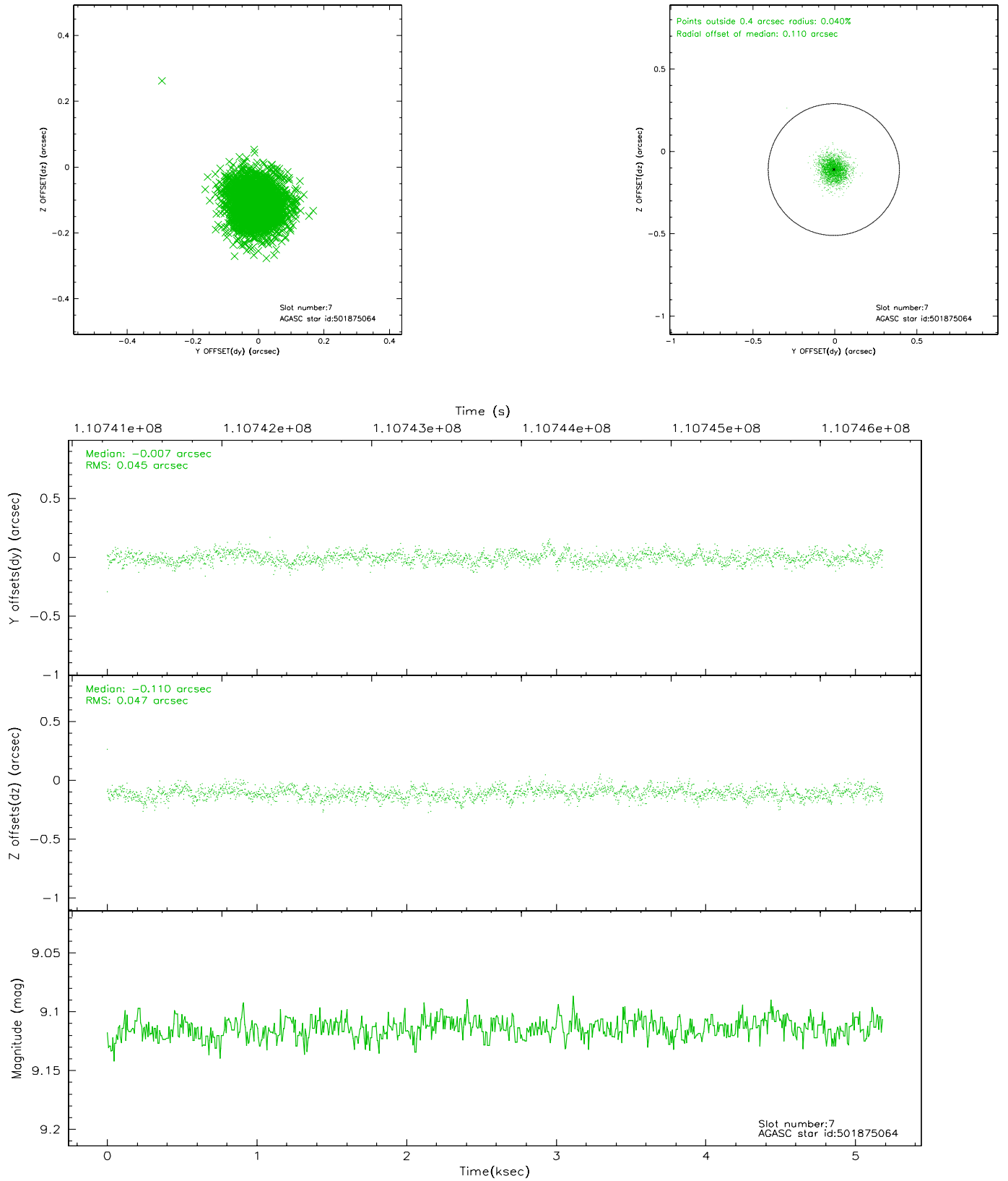
### 2.4.3 Slot 5



## 2.4.4 Slot 6

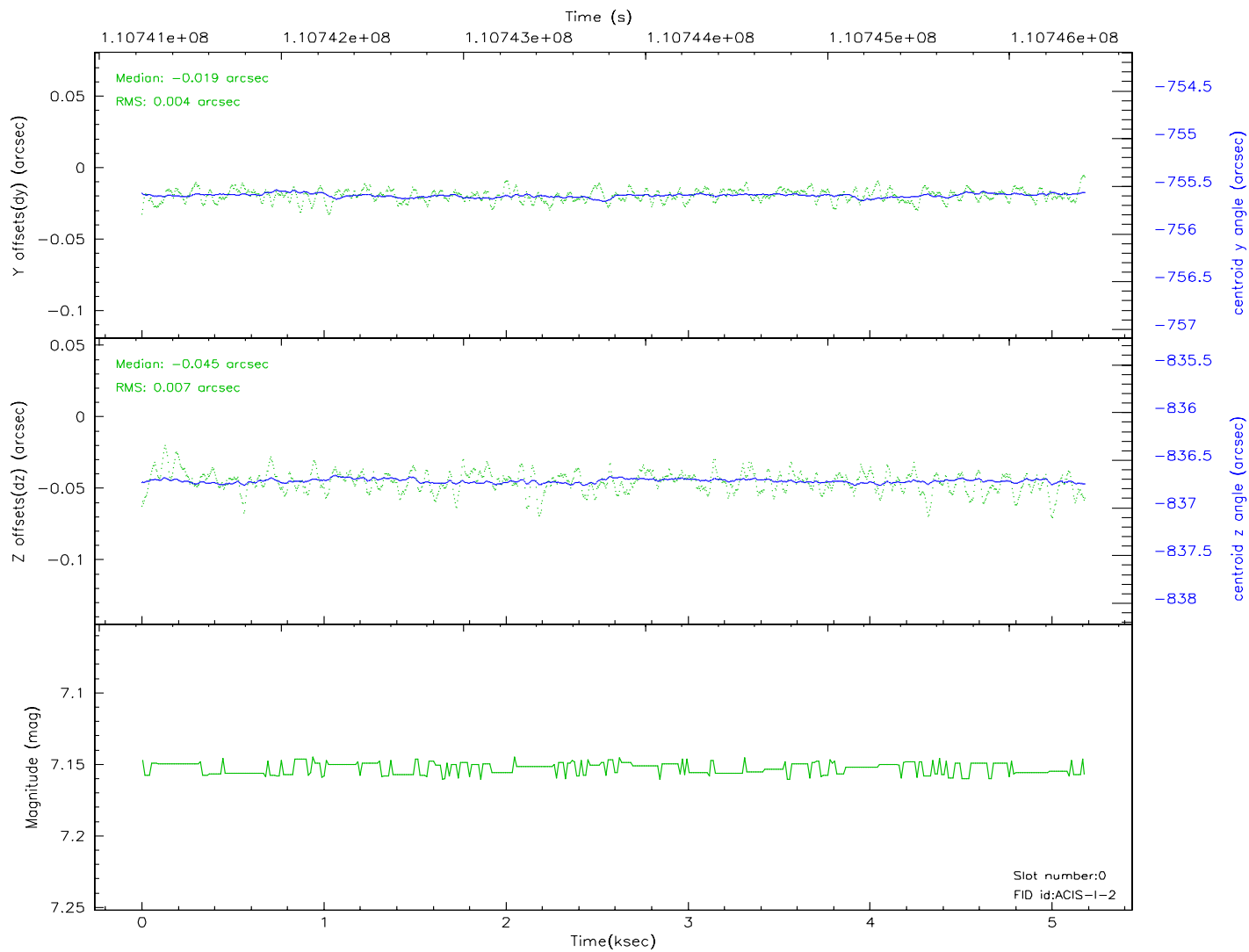
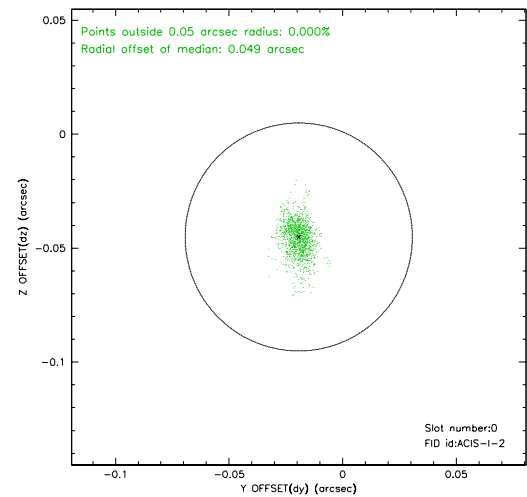
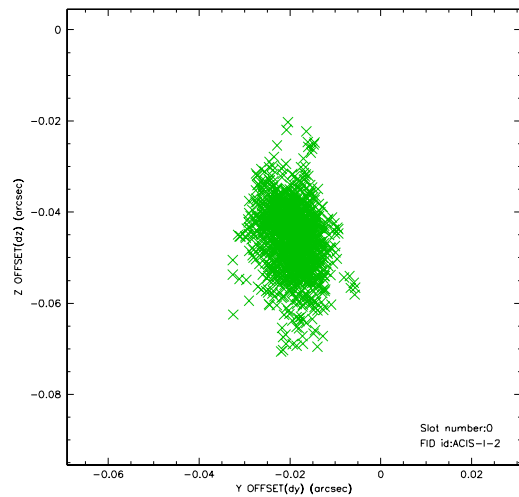


## 2.4.5 Slot 7

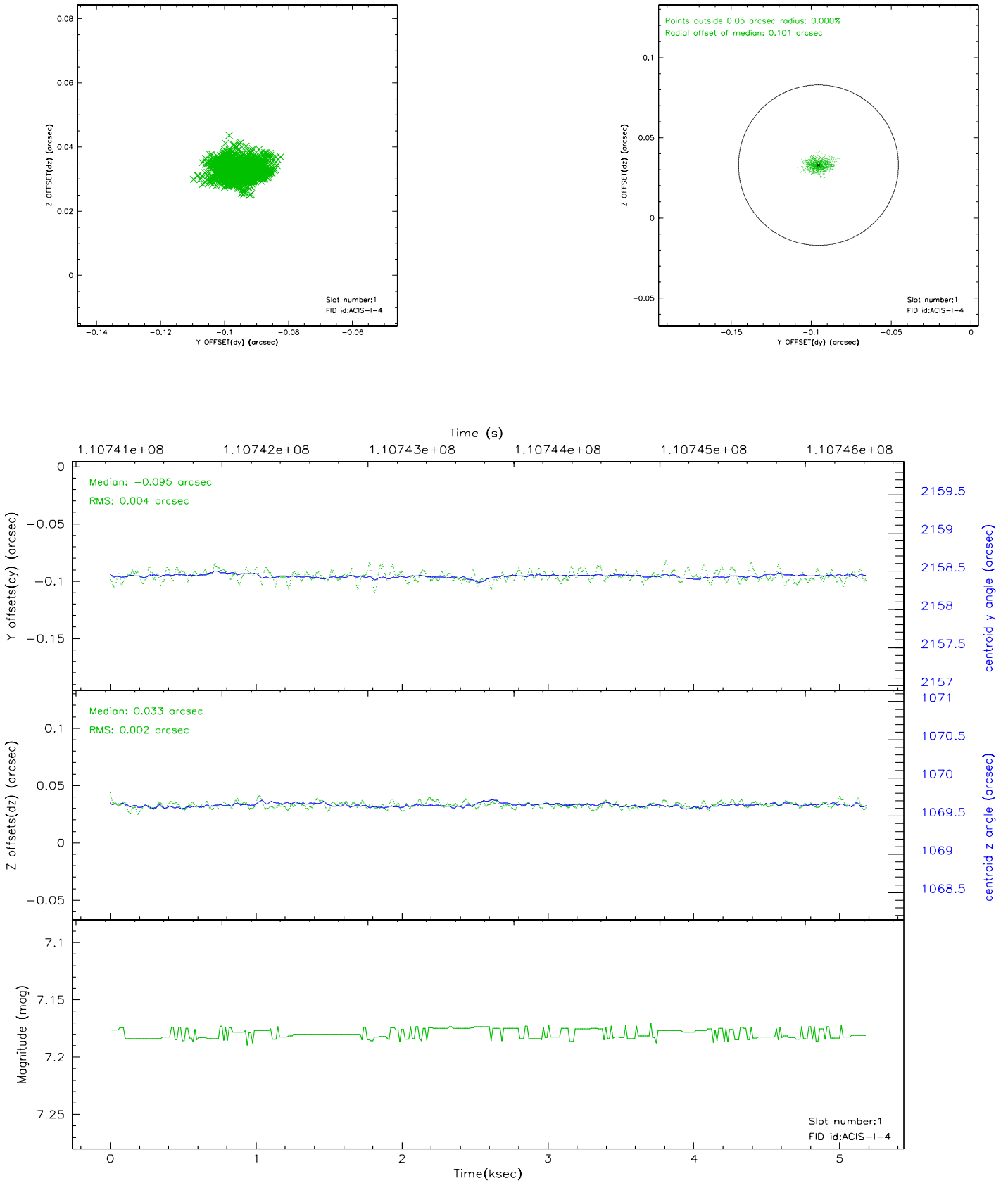


## 2.5 FID Slots

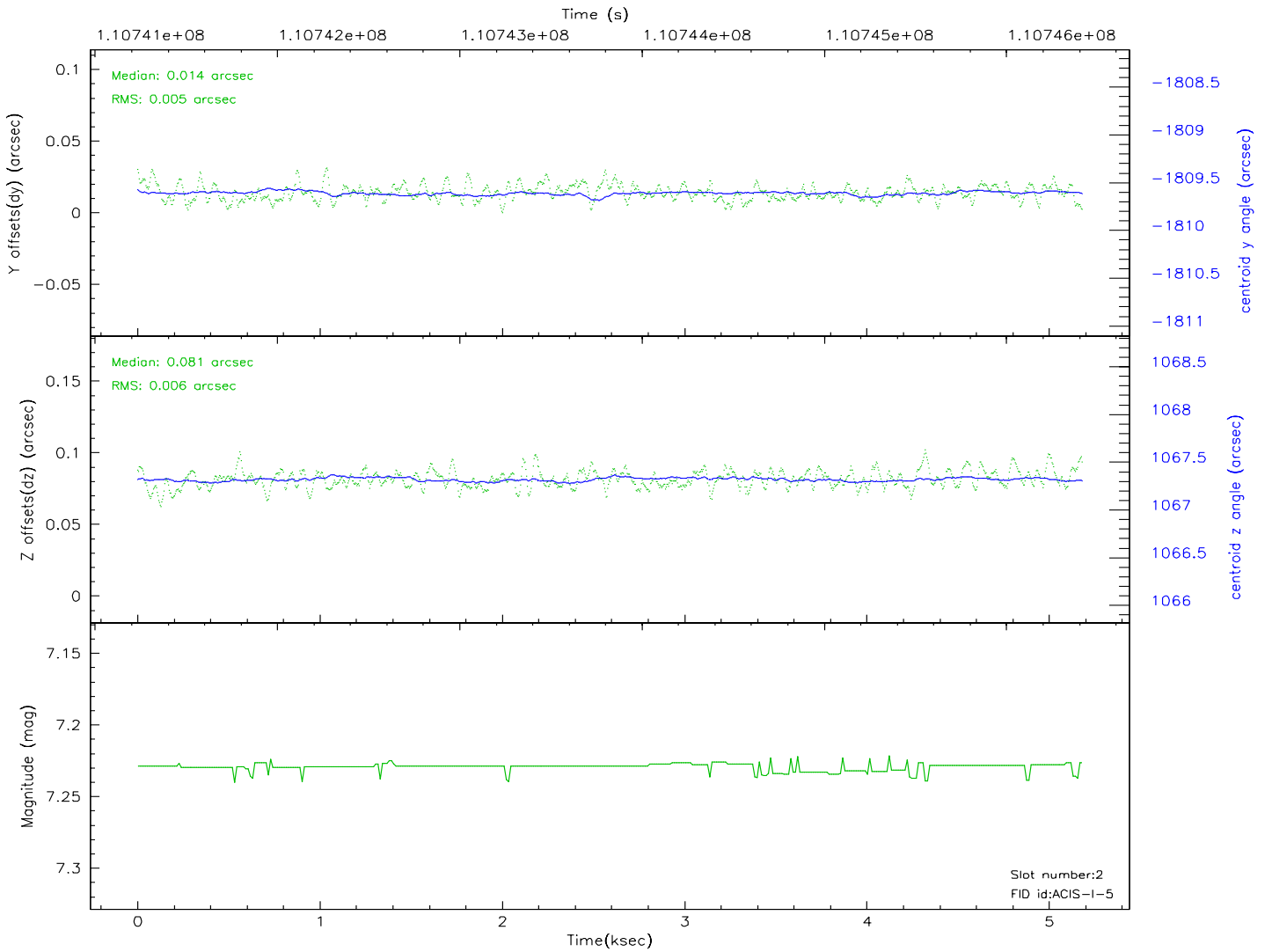
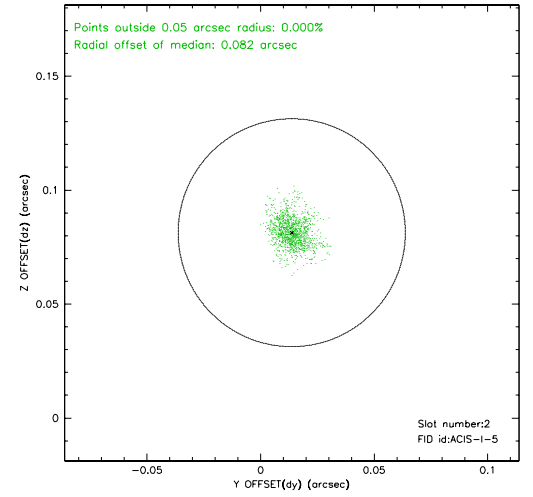
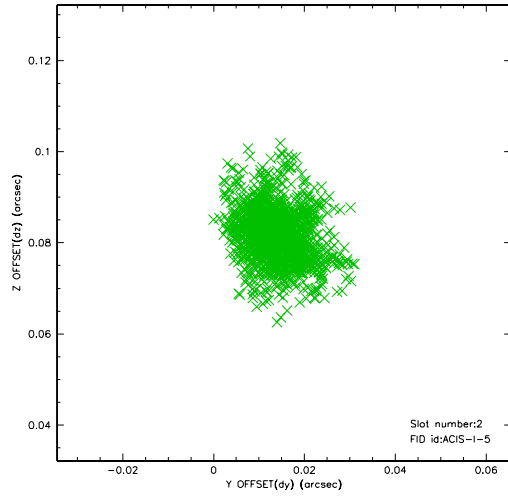
### 2.5.1 Slot 0



## 2.5.2 Slot 1

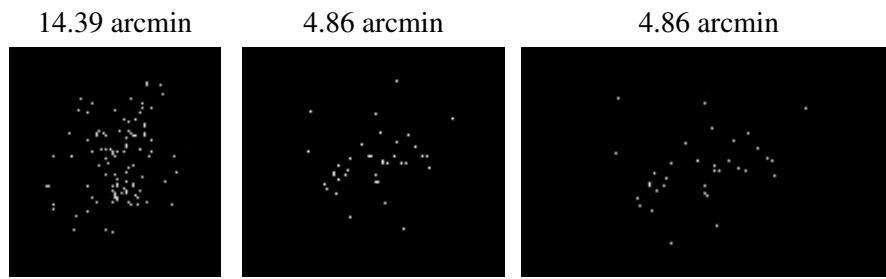


### 2.5.3 Slot 2





### 3 Point Sources



## A Summary

### A.1 Status

V&V Scientist	Beth Sundheim
V&V Date (YYYY-MM-DD)	2006.12.11
V&V Edition	1
V&V Disposition and Status	OK
V&V Charge Time	4.761

### A.2 Comments