

V&V Reference Report

L2 ASCDS Version : 10.2.1

Observation 16595 - L2 Version 2
Chandra X-Ray Center

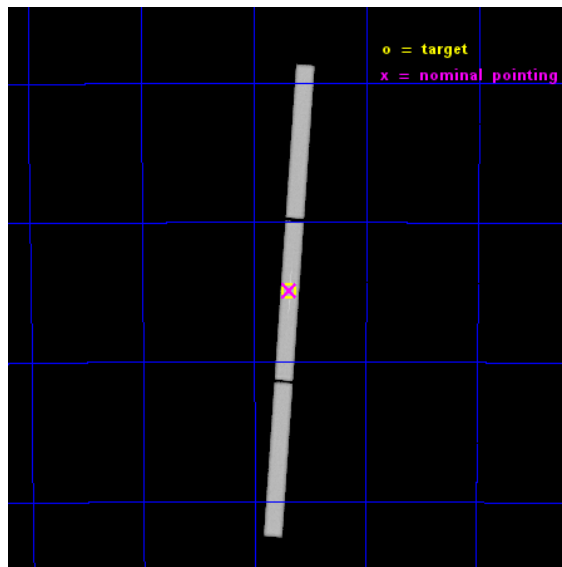
L2 Processing Date : Dec 10 2014

Contents

1	Front	2
2	OBI	3
2.1	OBI	3
2.1.1	Images	3
2.1.2	Parameters	4
2.1.3	Events	4
2.2	Compared Parameters	5
2.3	Aspect	6
2.4	Star Slots	9
2.4.1	Slot 3	9
2.4.2	Slot 4	10
2.4.3	Slot 5	11
2.4.4	Slot 6	12
2.4.5	Slot 7	13
2.5	FID Slots	14
2.5.1	Slot 0	14
2.5.2	Slot 1	15
2.5.3	Slot 2	16
3	Gratings	17
3.1	LETG Arm	17
A	Summary	19
A.1	Status	19
A.2	Comments	19

1 Front

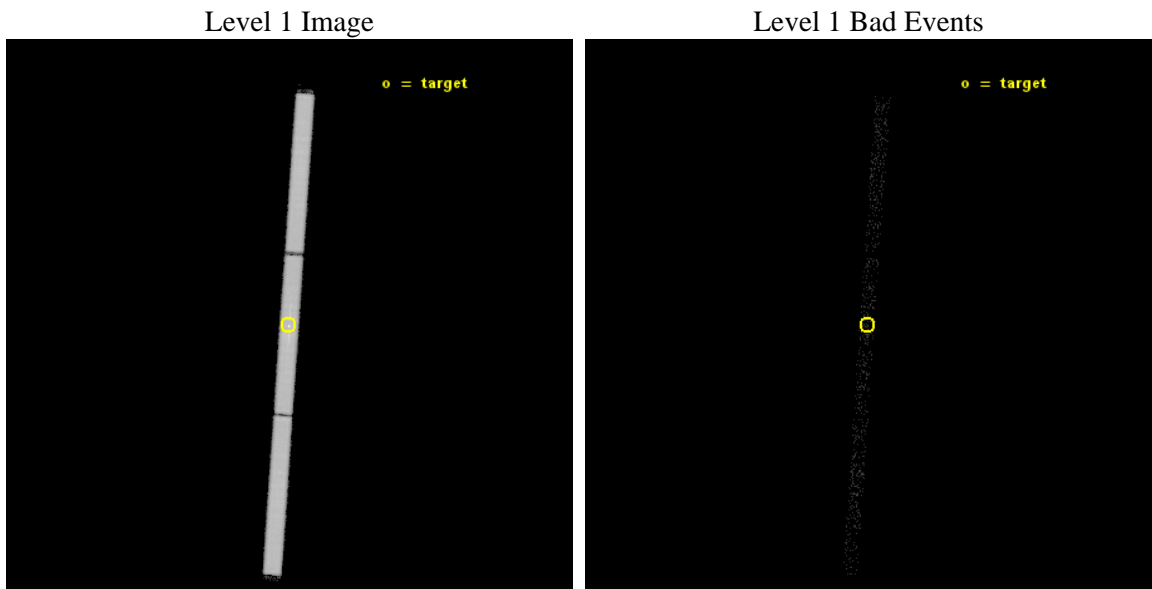
seq_num	300322	Sequence number
obs_id	16595	Observation id
title	A Fermi/LAT Trigger of Grating Observations of One Bright Nova in Outburst	Proposal title
observer	Regents' Professor Sumner Starrfield	Principal investigator
object	V745 Sco	Source name
ra_targ	268.842792	Observer's specified target RA [deg]
dec_targ	-33.249581	Observer's specified target Dec [deg]
ra_nom	268.84253927034	Nominal RA [deg]
dec_nom	-33.244927217186	Nominal Dec [deg]
roll_nom	94.027027000838	Nominal Roll [deg]
revision	2	Processing version of data
ontime	13015.450716376	[s]
livetime	12937.244982051	Ontime multiplied by DTCOR
l2events	655248	Number of level 2 events



2 OBI

2.1 OBI

2.1.1 Images



2.1.2 Parameters

obi_num	0	Obi number	sched_exp_time	13000.000000	[s] Scheduled observation exposure time
ascdsver	10.3.1	Processing system revision	ontime	13015.450716376	[s]
caldsver	4.6.4	 	l1events	867394	Number of level 1 events
date	2014-12-10T11:40:29	Date and time of file creation	tgmethod	TGDETECT	Method used to create src1a file
revision	2	Processing version of data	zo_pos	(32763.52, 32639.39)	src1a sky pixel position

2.1.3 Events

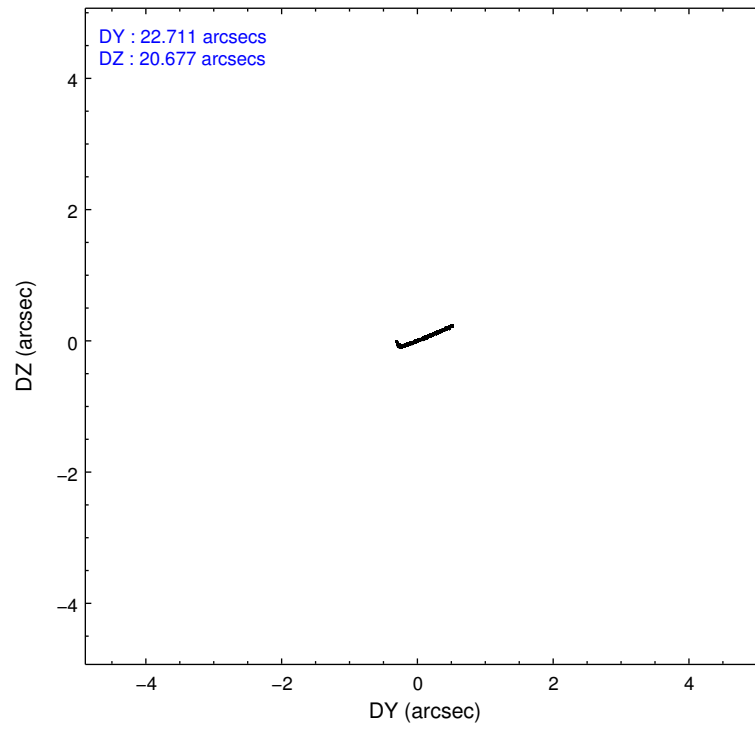
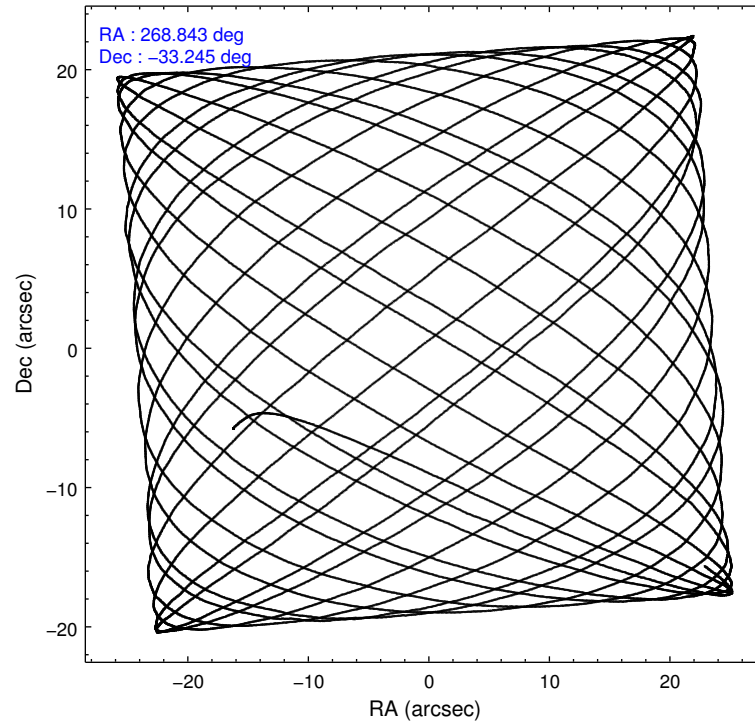
Level 1 Events

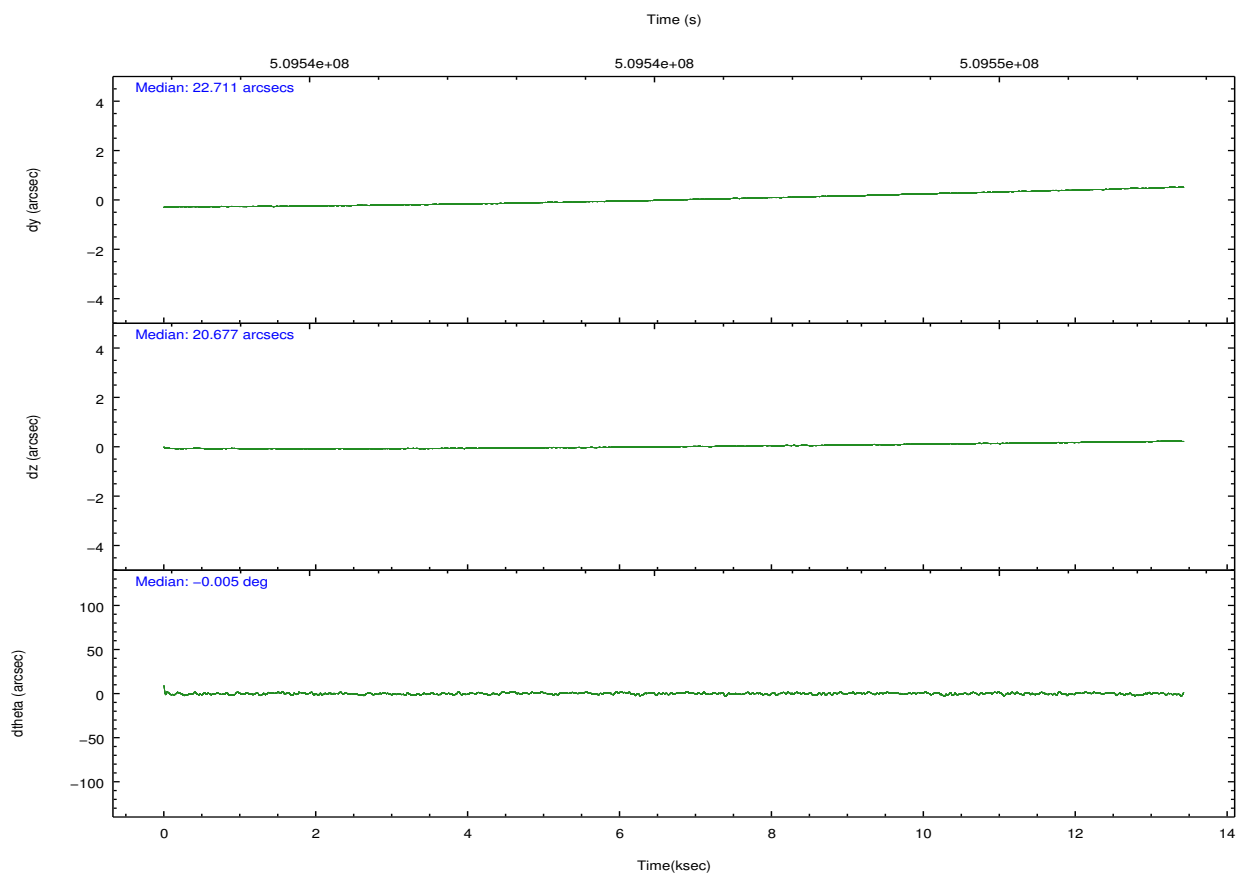
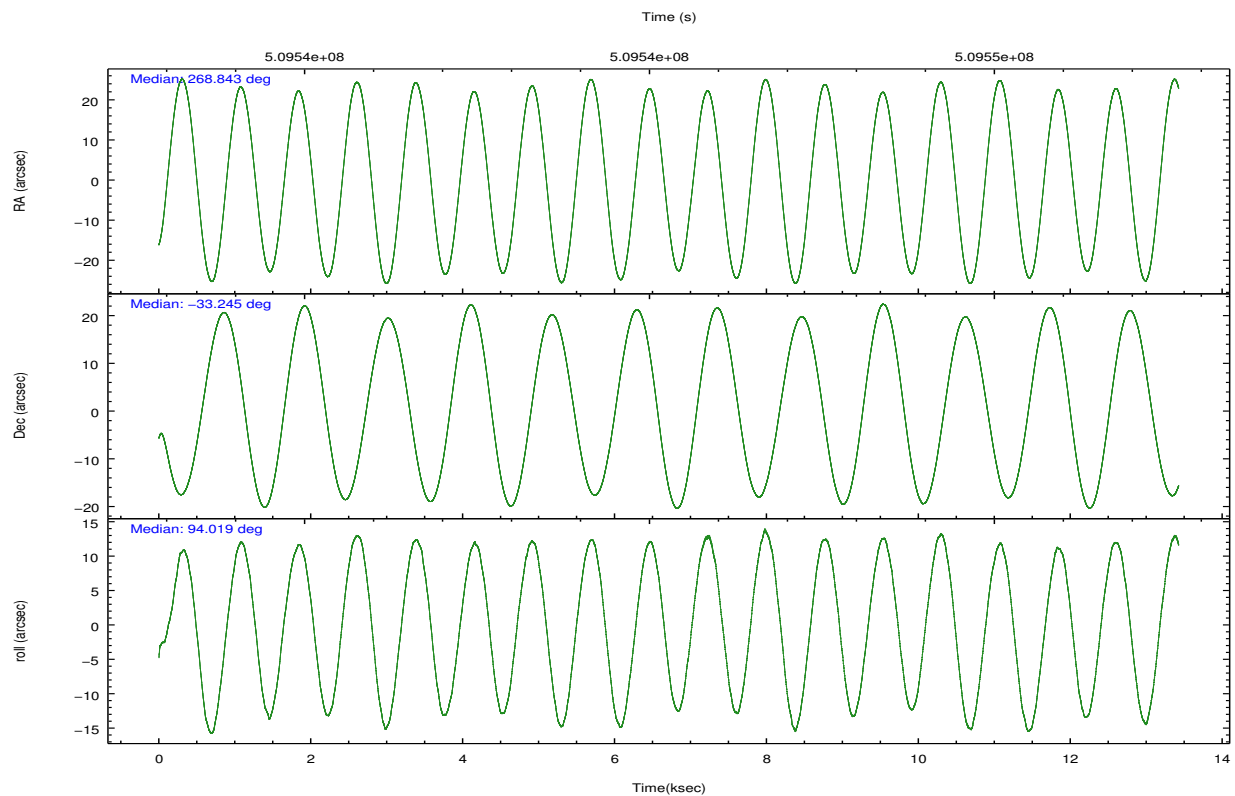
	segment 1	segment 2	segment 3
level 1 events	289432	290104	287858
rejected events	984	1085	1079
rejected %	0%	0%	0%

2.2 Compared Parameters

Parameter	Planned	Actual	Parameter	Planned	Actual
Instrument	HRC	HRC	Obspar format version number	7	7
Detector	HRC-S	HRC-S	Obspar file type	PREDICTED	ACTUAL
Grating	LETG	LETG	Obspar update status	NONE	UPDATED
Data mode	OBSERVING	OBSERVING			
Observation mode	POINTING	POINTING			
[deg] Pointing RA	268.863076	268.8425392703435			
[deg] Pointing Dec	-33.267790	-33.24492721718568			
[deg] Pointing Roll	93.970953	94.02702700083812			
[mm] SIM focus pos	-1.429586	-1.428180813131781			
[mm] SIM defocus	0.1037507710433287	0.1051558262725154			
[mm] SIM translation stage pos	250.455976	250.4635187648994			
[mm] SIM translation stage offset	0	-0.007540371344731511			
[s] Observation start time (MET)	509538988.184000	509538013.58537			
Observation start date	2014-02-23T10:35:21	2014-02-23T10:20:13			
[s] Observation end time (MET)	509551988.184000	509552252.88615			
Observation end date	2014-02-23T14:12:01	2014-02-23T14:17:32			

2.3 Aspect



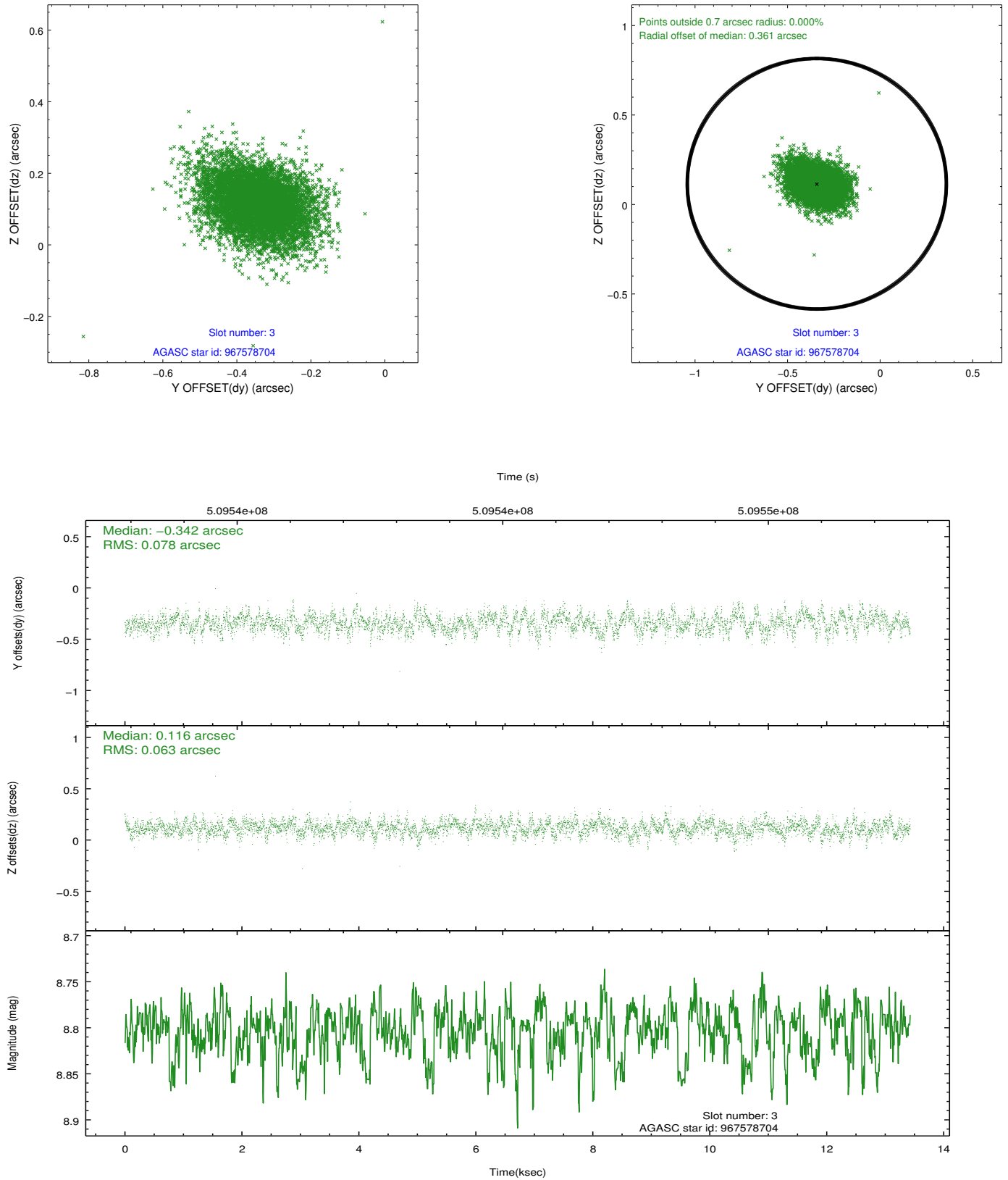


Slot Statistics

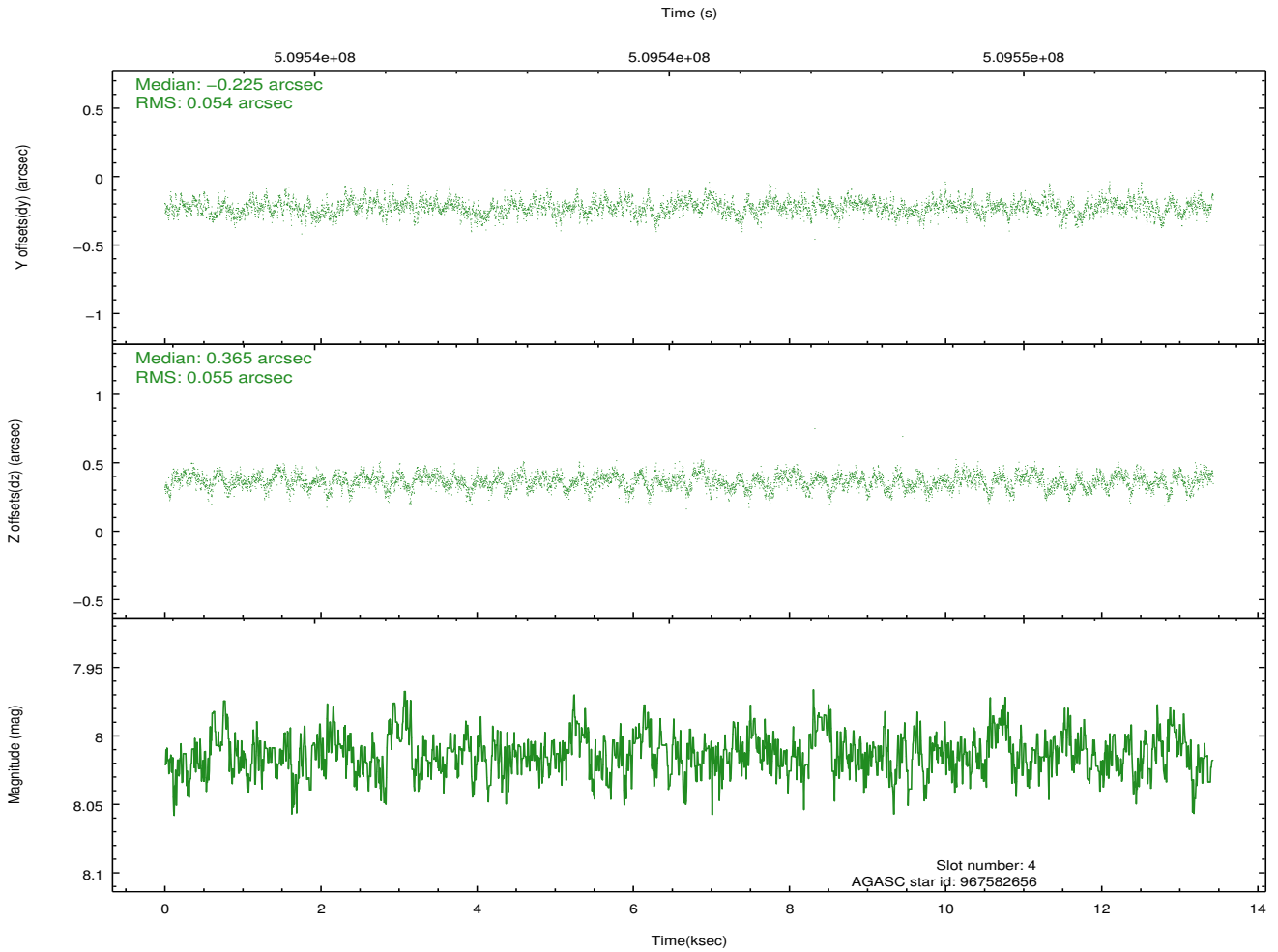
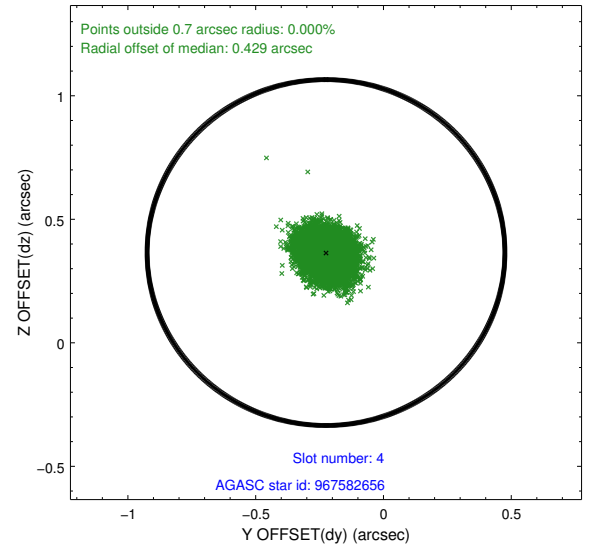
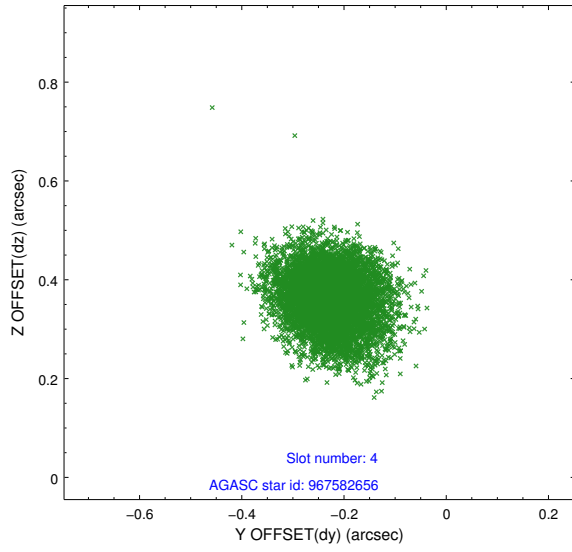
slot	status	used	id	mag	n_pts	med_dy	med_dz	dr1	dr2	ra	dec	mean_y	mean_z
0	FID		HRC-S-1	6.99	3275	-0.087	-0.175	0.006	0.011	0.000000	0.000000	-1177.50	-469.75
1	FID		HRC-S-2	6.97	3275	0.187	-0.161	0.014	0.021	0.000000	0.000000	1222.09	-462.44
2	FID		HRC-S-4	6.93	3275	0.303	0.032	0.011	0.018	0.000000	0.000000	1221.49	562.48
3	GUIDE	used	967578704	8.80	6546	-0.342	0.116	0.104	0.176	269.523439	-32.757865	1687.24	-2120.21
4	GUIDE	used	967582656	8.01	6548	-0.225	0.365	0.082	0.133	269.593497	-32.909675	1126.60	-2290.21
5	GUIDE	used	967585416	8.48	6550	0.152	0.112	0.105	0.166	269.257629	-33.408425	-588.32	-1147.37
6	GUIDE	used	968104512	8.71	6549	0.248	-0.445	0.092	0.153	268.190357	-33.844560	-1938.35	2150.74
7	GUIDE	used	968110992	8.08	6550	0.163	-0.147	0.090	0.153	268.673148	-33.905496	-2251.09	725.61

2.4 Star Slots

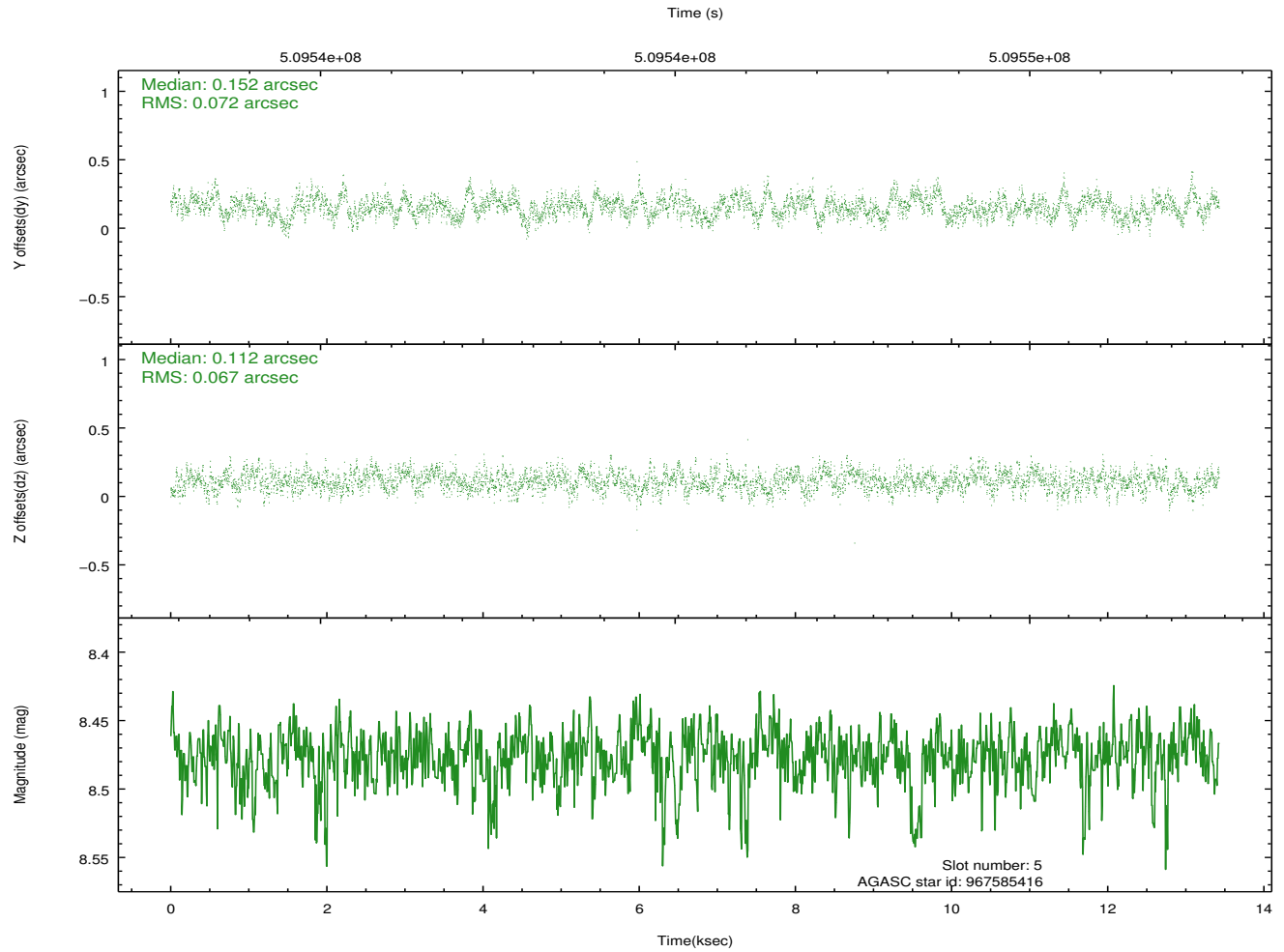
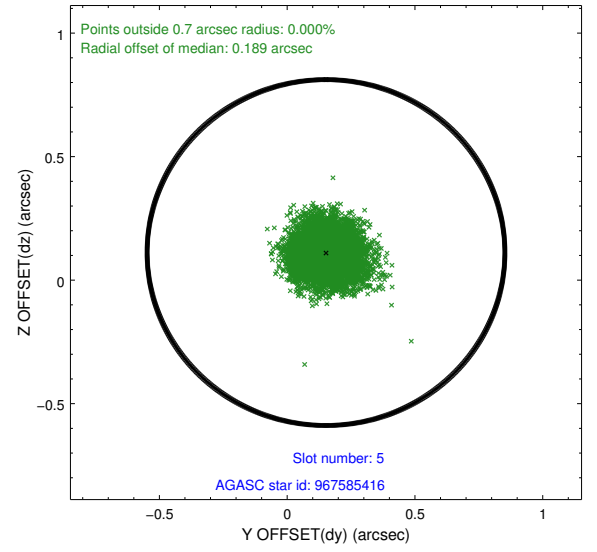
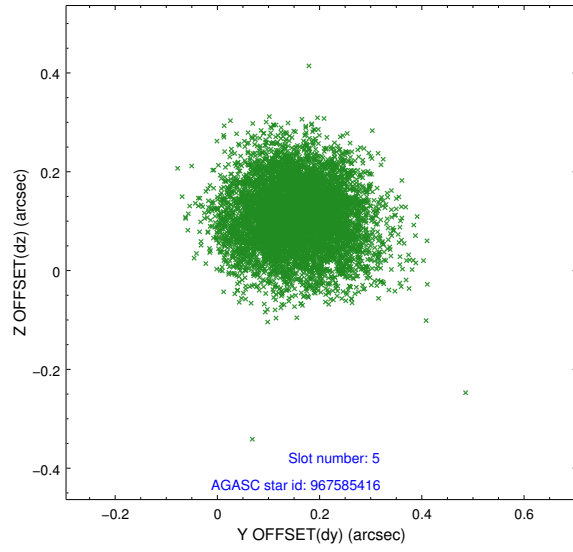
2.4.1 Slot 3



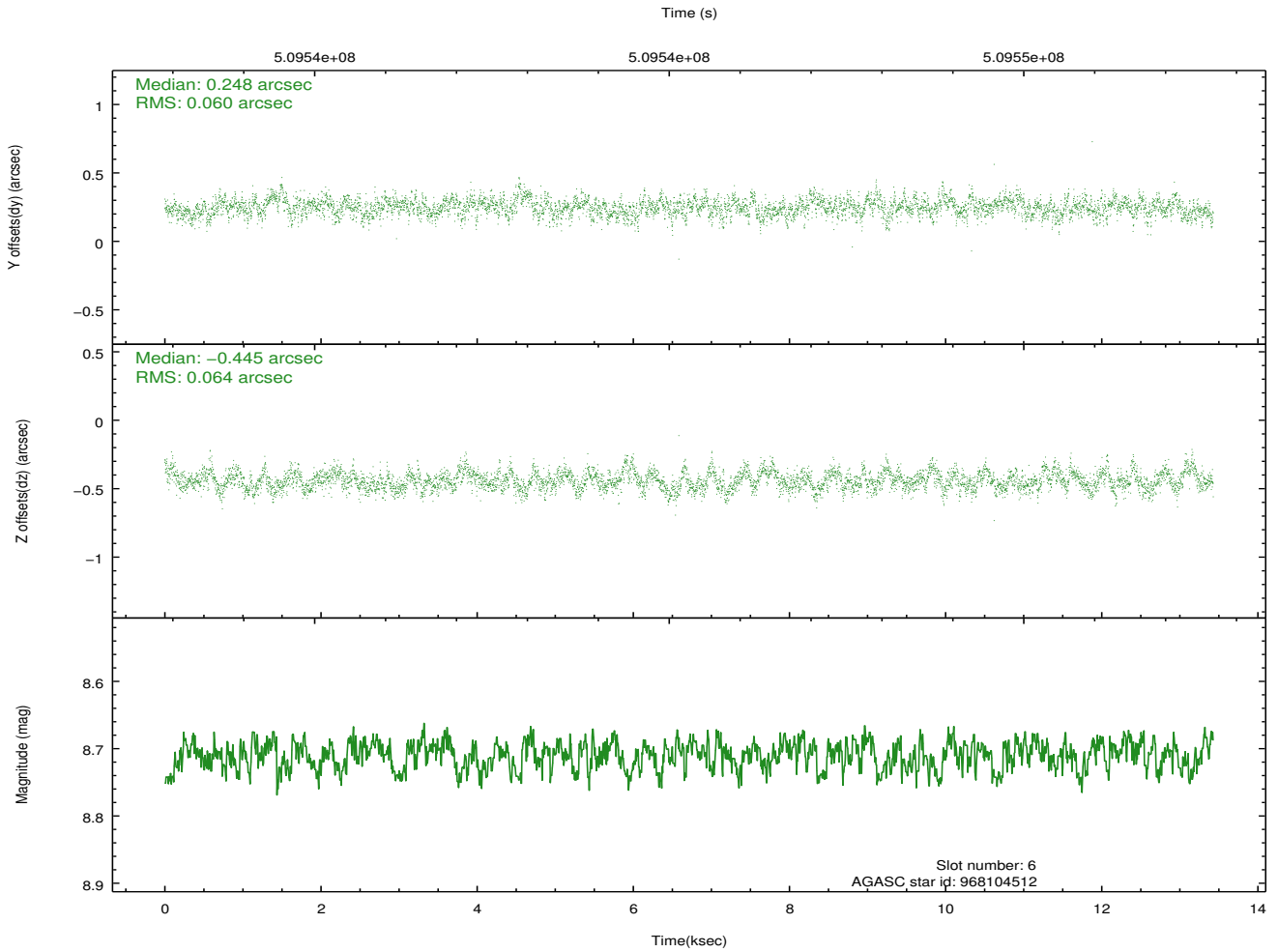
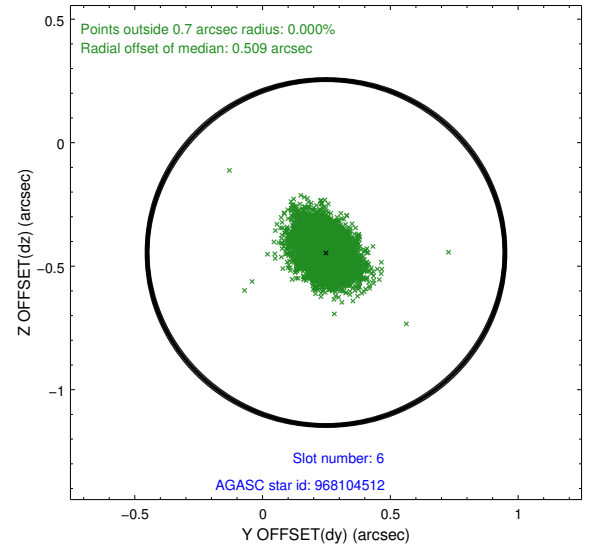
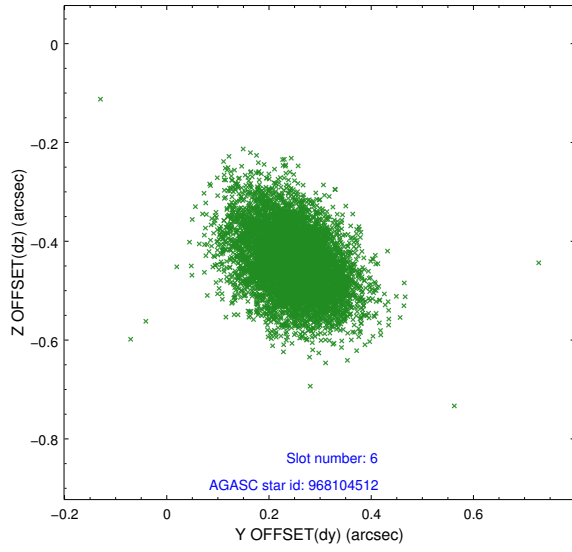
2.4.2 Slot 4



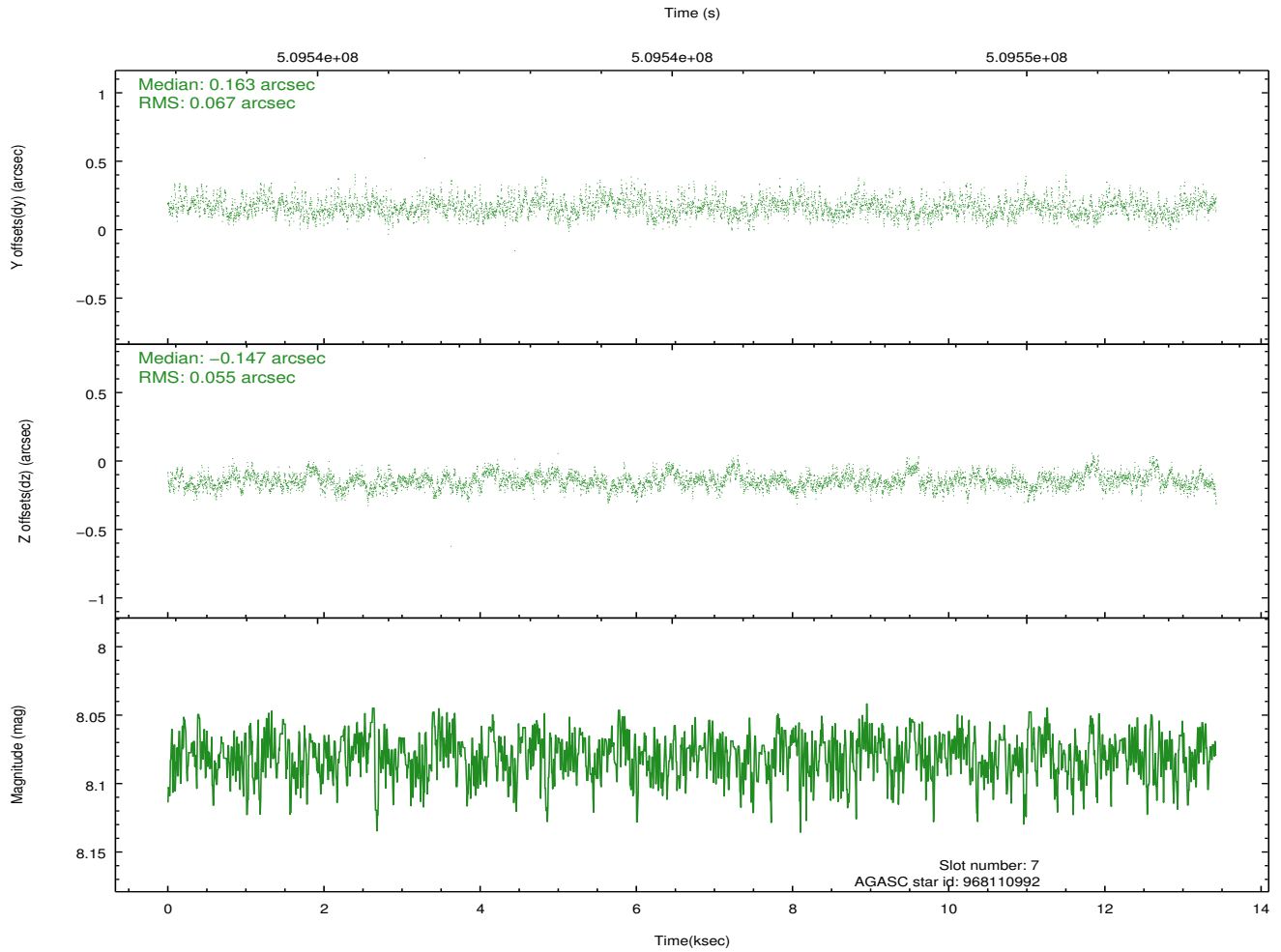
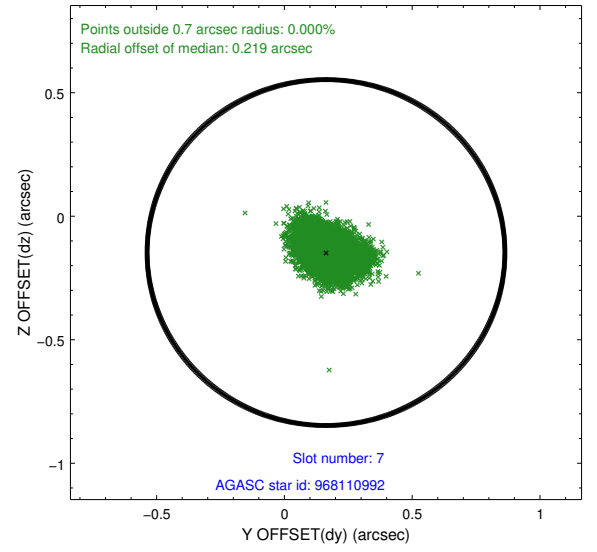
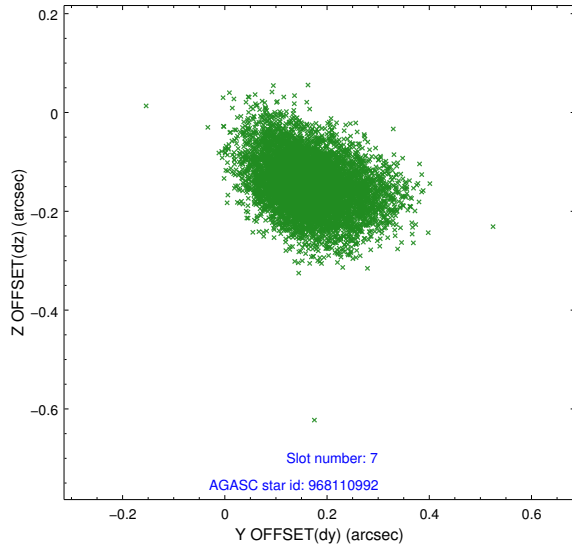
2.4.3 Slot 5



2.4.4 Slot 6

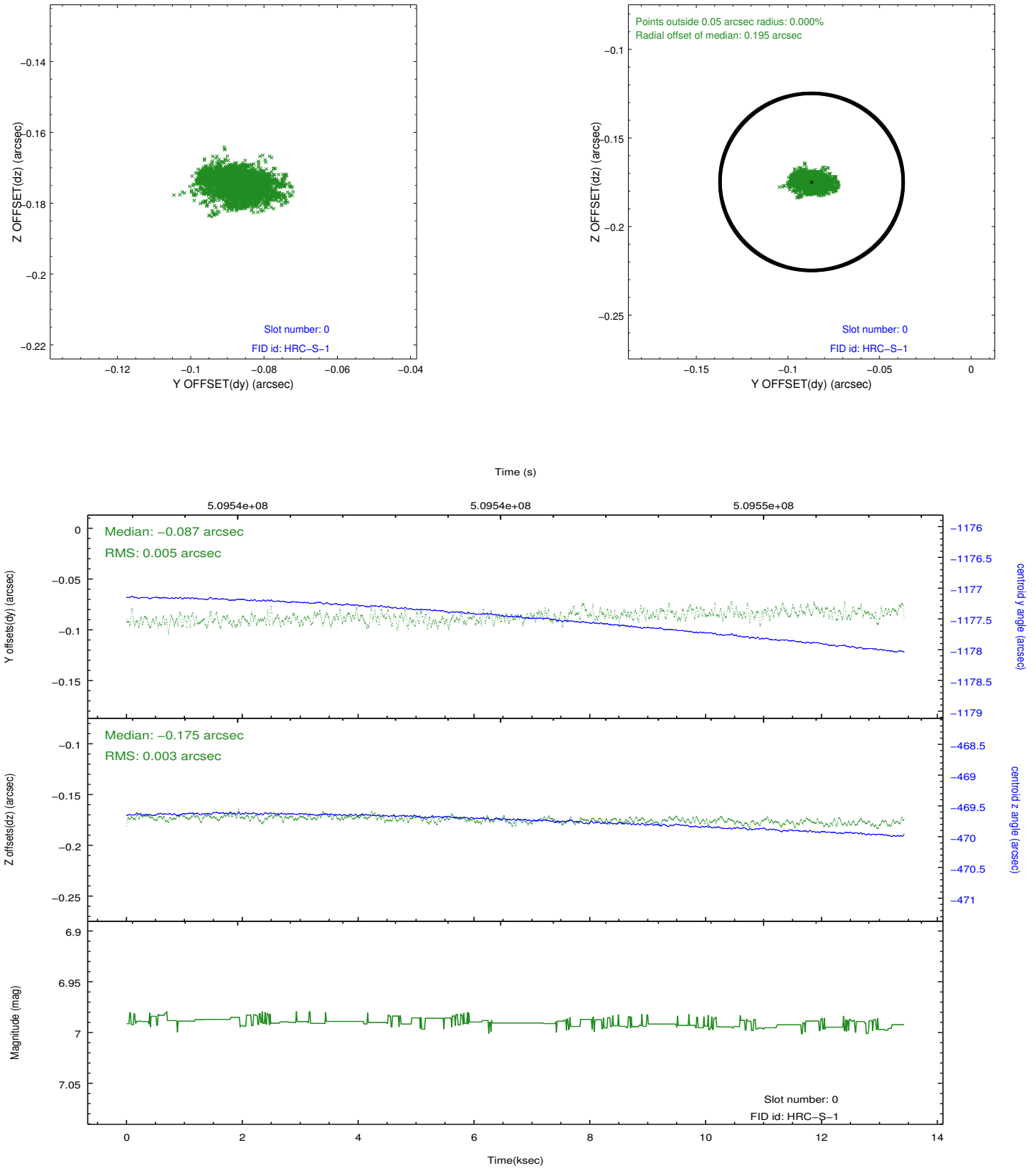


2.4.5 Slot 7

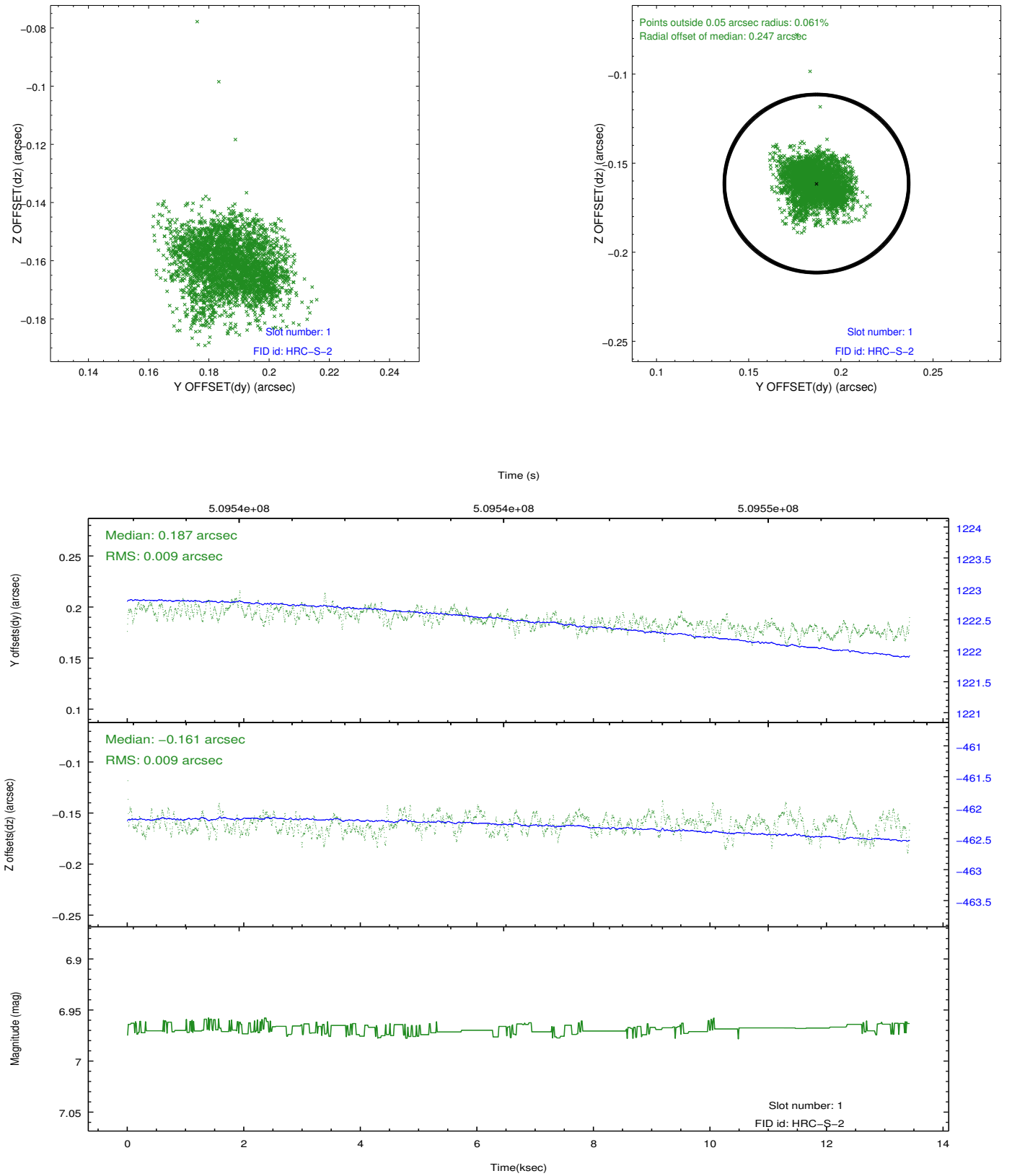


2.5 FID Slots

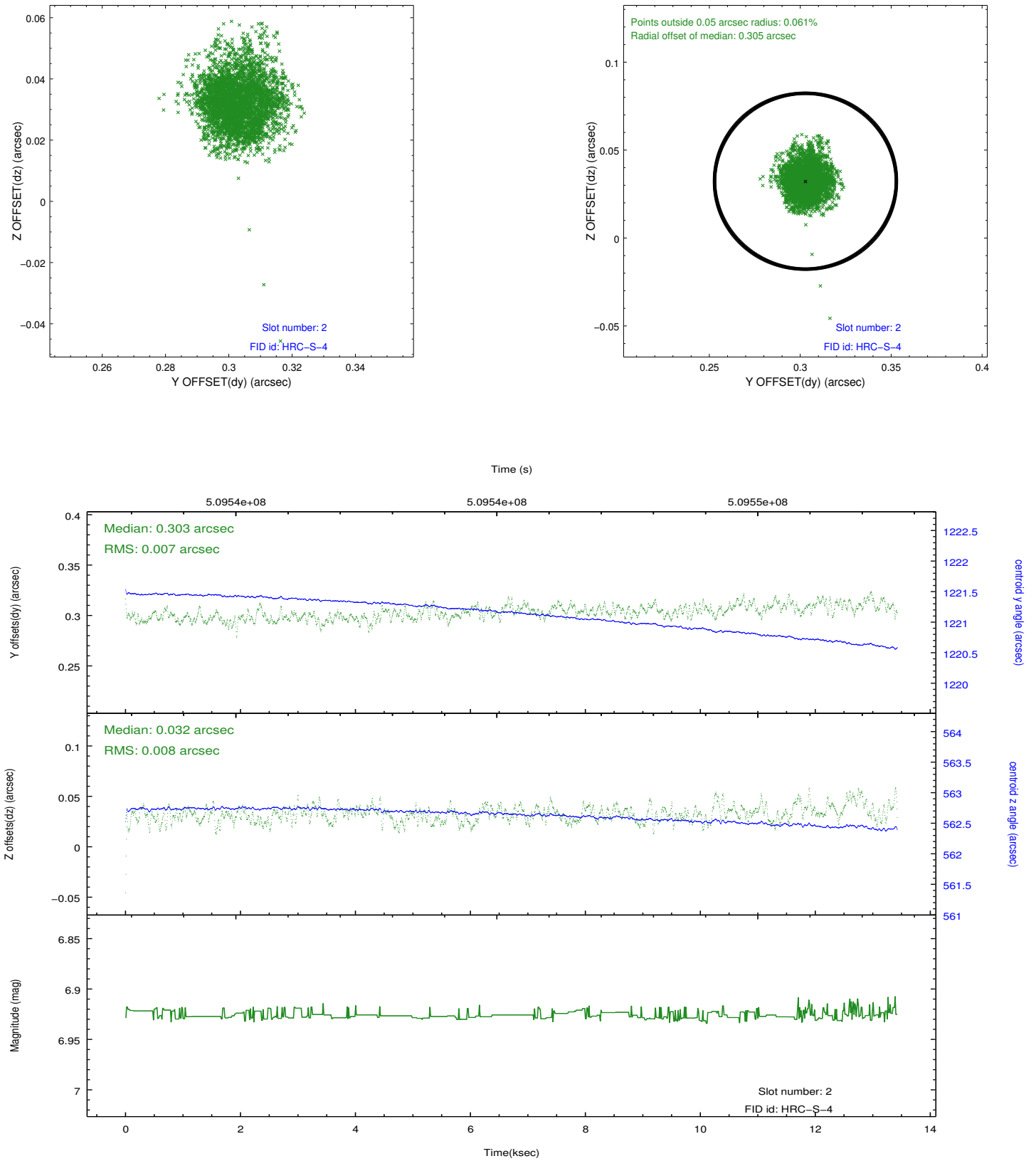
2.5.1 Slot 0



2.5.2 Slot 1

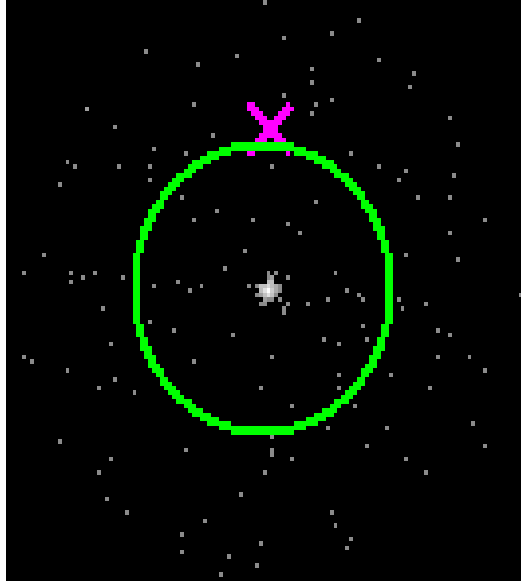


2.5.3 Slot 2

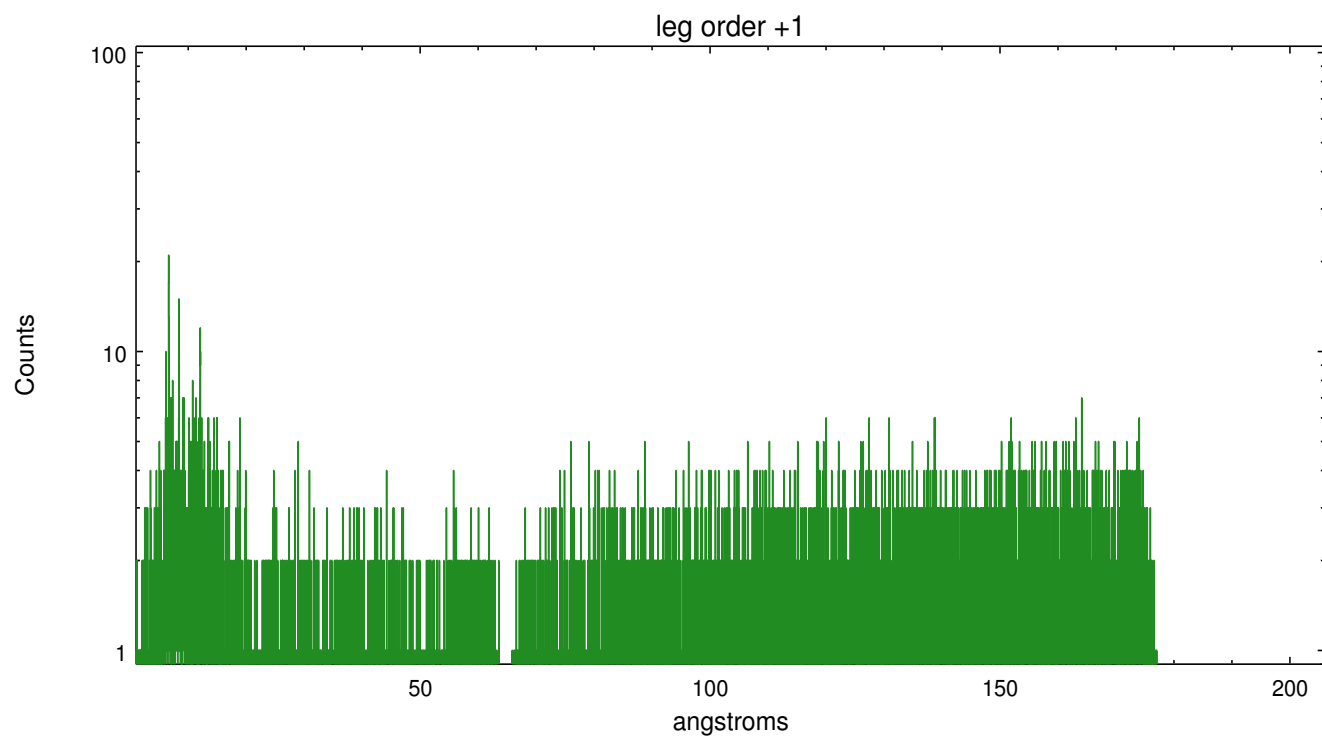
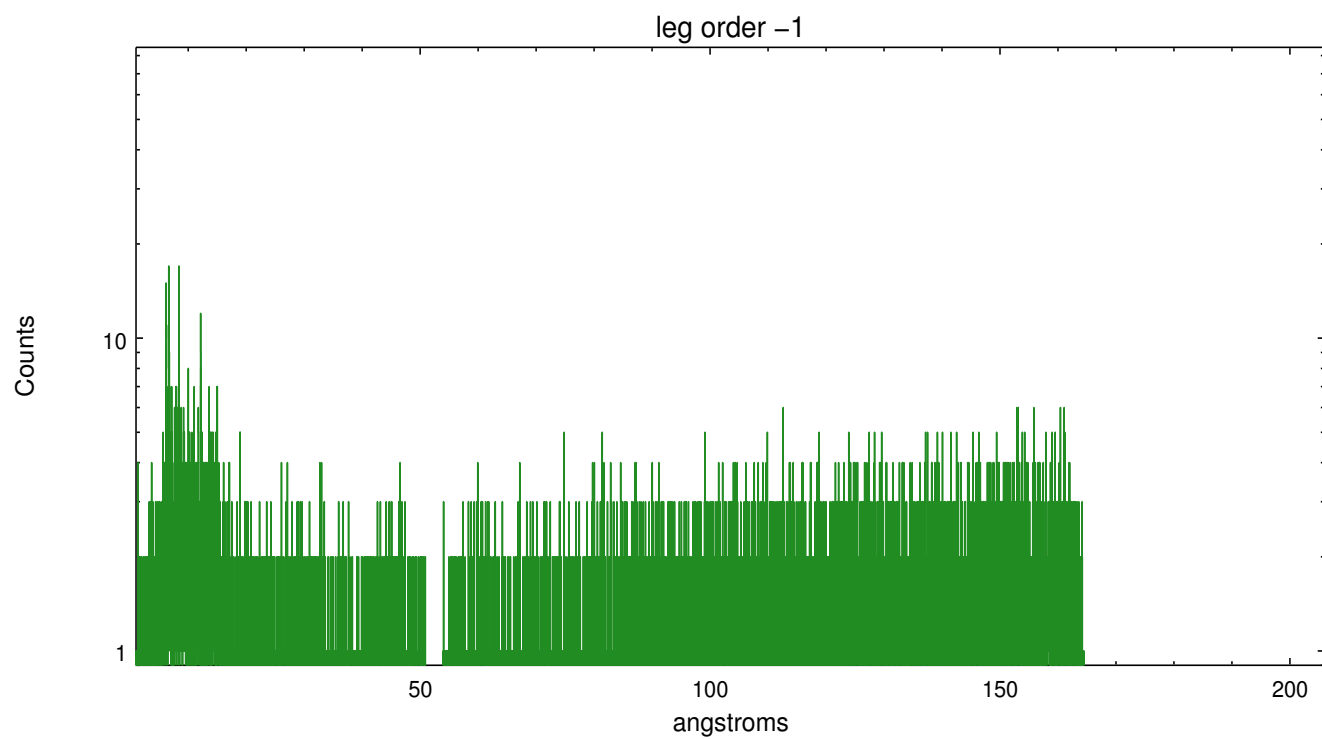


3 Gratings

3.1 LETG Arm



LETG Zero Order



A Summary

A.1 Status

V&V Scientist	Beth Sundheim
V&V Date (YYYY-MM-DD)	2015.11.20
V&V Edition	1
V&V Disposition and Status	OK
V&V Charge Time	13.015450716376

A.2 Comments

These data have been reprocessed with new aspect alignment calibration files that correct small mean offsets (up to 0.4 arcsecs) and improve overall astrometric accuracy. The new calibration was determined using data from the time period being reprocessed and was performed using cross-correlation of X-ray sources with radio and optical counterparts.