

V&V Reference Report

L2 ASCDS Version : 8.4.5

Observation 1655 - L2 Version 3
Chandra X-Ray Center

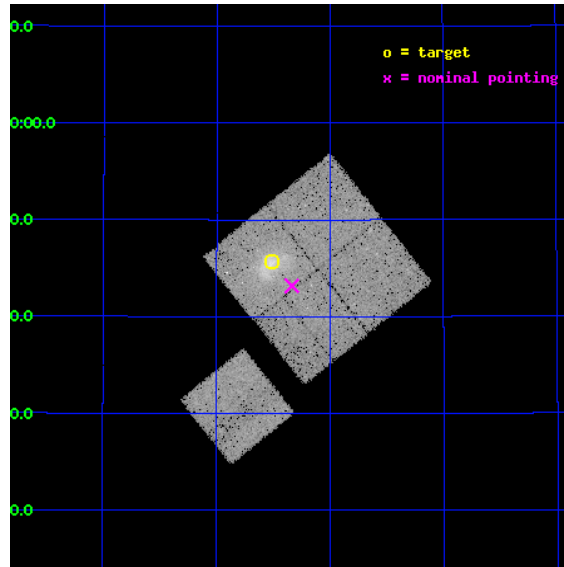
L2 Processing Date : Sep 7 2012

Contents

1	Front	2
2	OBI	3
2.1	OBI	3
2.1.1	Images	3
2.1.2	Bias	3
2.1.3	Parameters	4
2.1.4	Events	4
2.2	Compared Parameters	5
2.3	Aspect	6
2.4	Star Slots	9
2.4.1	Slot 3	9
2.4.2	Slot 4	10
2.4.3	Slot 5	11
2.4.4	Slot 6	12
2.4.5	Slot 7	13
2.5	FID Slots	14
2.5.1	Slot 0	14
2.5.2	Slot 1	15
2.5.3	Slot 2	16
A	Summary	17
A.1	Status	17
A.2	Comments	17

1 Front

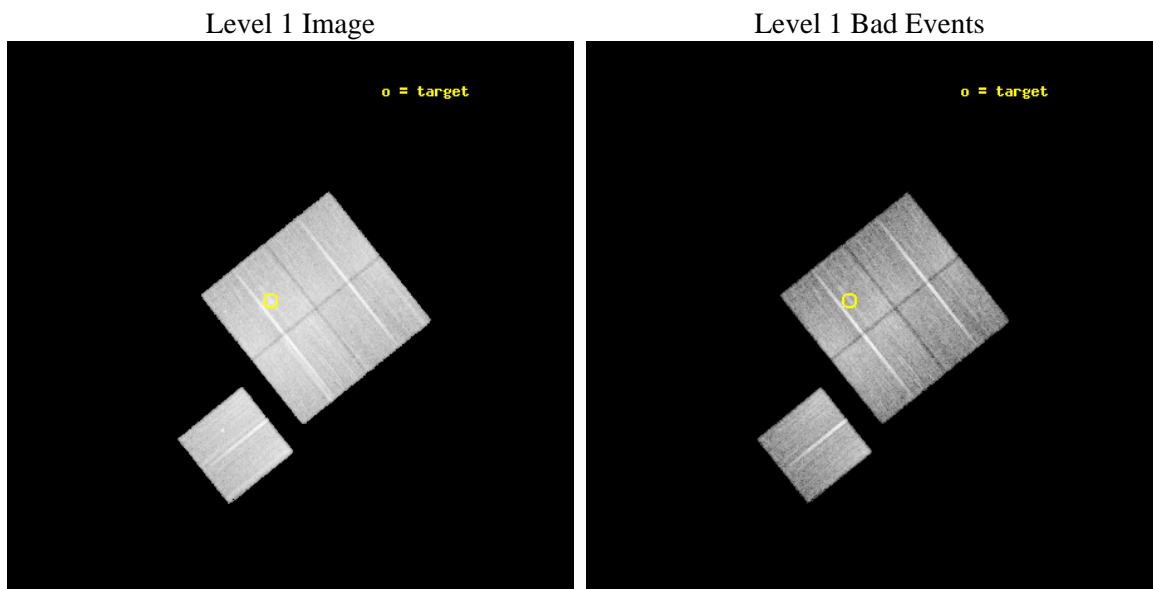
seq_num	800123	Sequence number
obs_id	1655	Observation id
title	DETERMINATION OF H0 AND Q0, 2000 PART 2	Proposal title
observer	DR. LEON VANSPEYBROECK	Principal investigator
object	MACS J0717.5+3745	Source name
dtcycle	0	
cycle	P	events from which exps? Prim/Second/Both
ra_targ	109.379167	Observer's specified target RA [deg]
dec_targ	37.761	Observer's specified target Dec [deg]
ra_nom	109.33409949741	Nominal RA [deg]
dec_nom	37.719828024893	Nominal Dec [deg]
roll_nom	231.31024015542	Nominal Roll [deg]
revision	3	Processing version of data
ontime	20134.499961287	Sum of GTIs [s]
livetime	19871.427896489	Livetime [s]
ontime0	20134.499961287	Sum of GTIs [s]
ontime1	20131.35900104	Sum of GTIs [s]
ontime2	20134.499961287	Sum of GTIs [s]
ontime3	20134.499961287	Sum of GTIs [s]
ontime6	20134.499961287	Sum of GTIs [s]
l2events	90676	Number of level 2 events



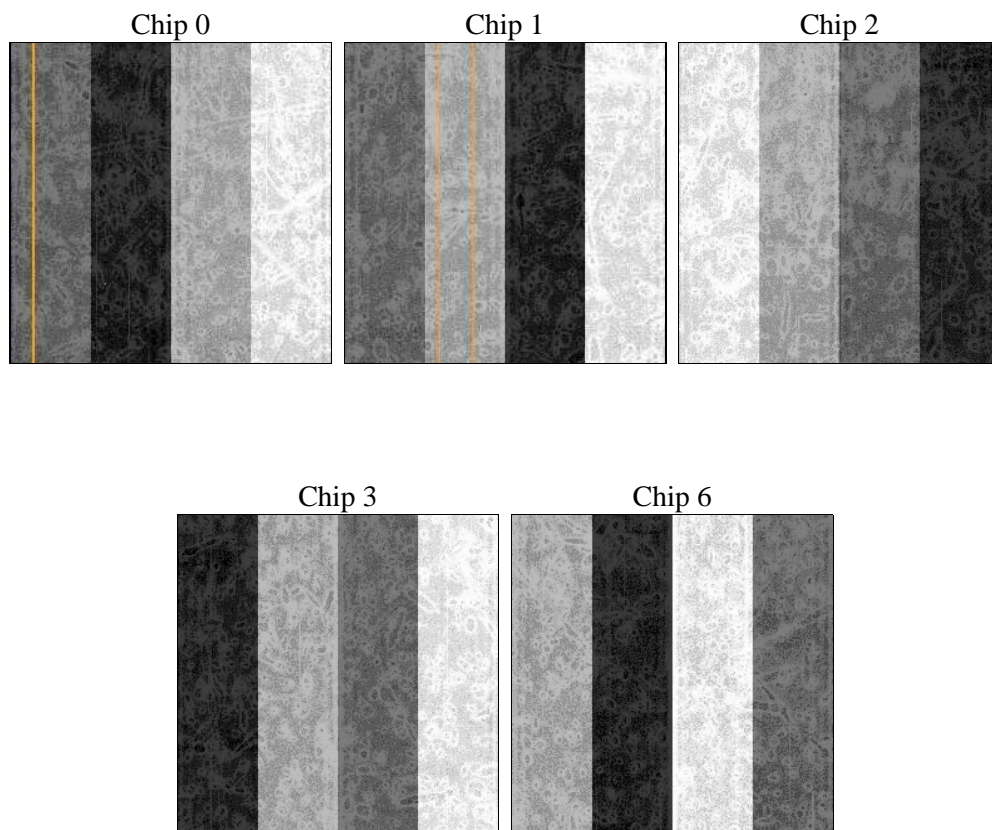
2 OBI

2.1 OBI

2.1.1 Images



2.1.2 Bias



2.1.3 Parameters

obi_num	0	Obi number	sched_exp_time	20000.000000	[s] Scheduled observation exposure time
ascdsver	8.4.5	Processing system revision	ontime	20134.499961287	Sum of GTIs [s]
caldsver	4.5.1.1	 	ontime0	20134.499961287	Sum of GTIs [s]
date	2012-09-07T05:39:39	Date and time of file creation	ontime1	20131.35900104	Sum of GTIs [s]
revision	3	Processing version of data	ontime2	20134.499961287	Sum of GTIs [s]
			ontime3	20134.499961287	Sum of GTIs [s]
			ontime6	20134.499961287	Sum of GTIs [s]
			l1events	921233	Number of level 1 events

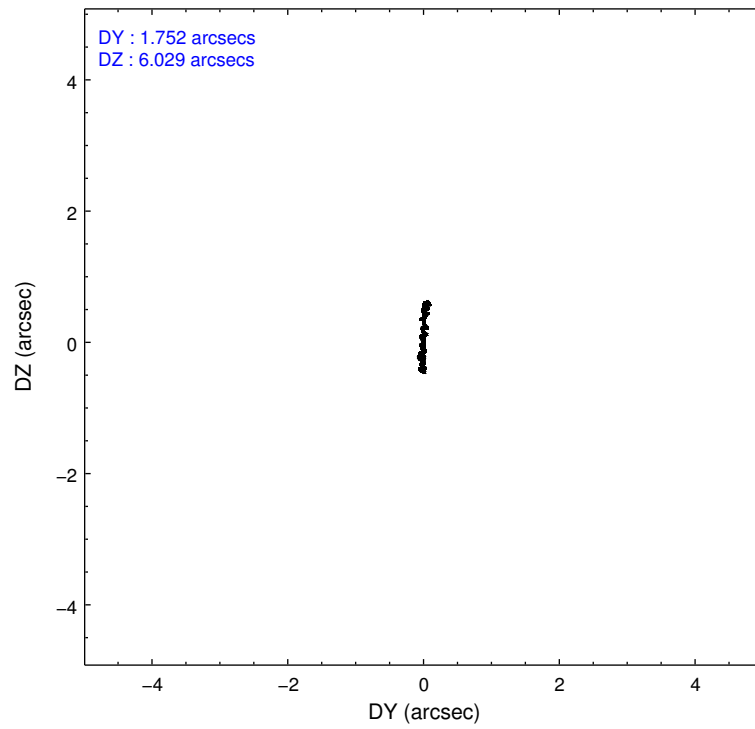
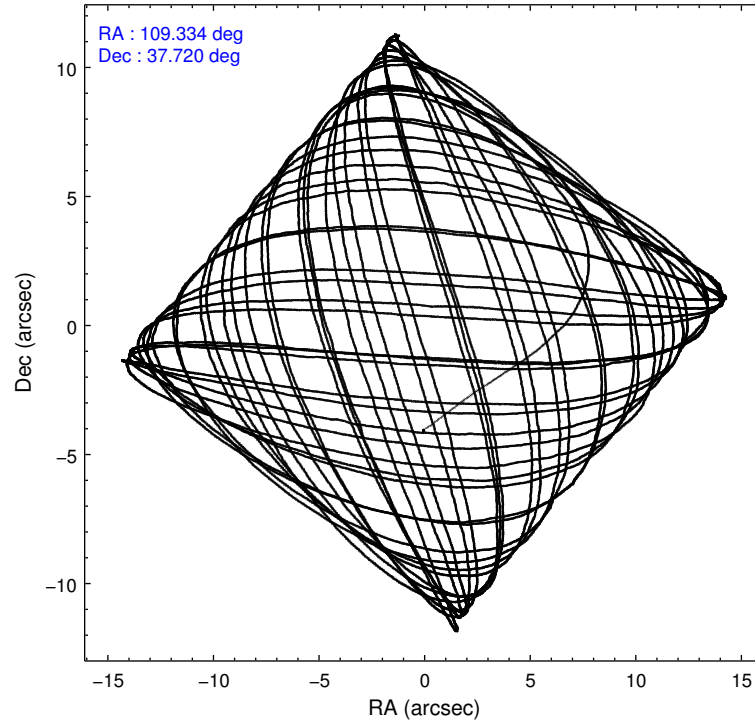
2.1.4 Events

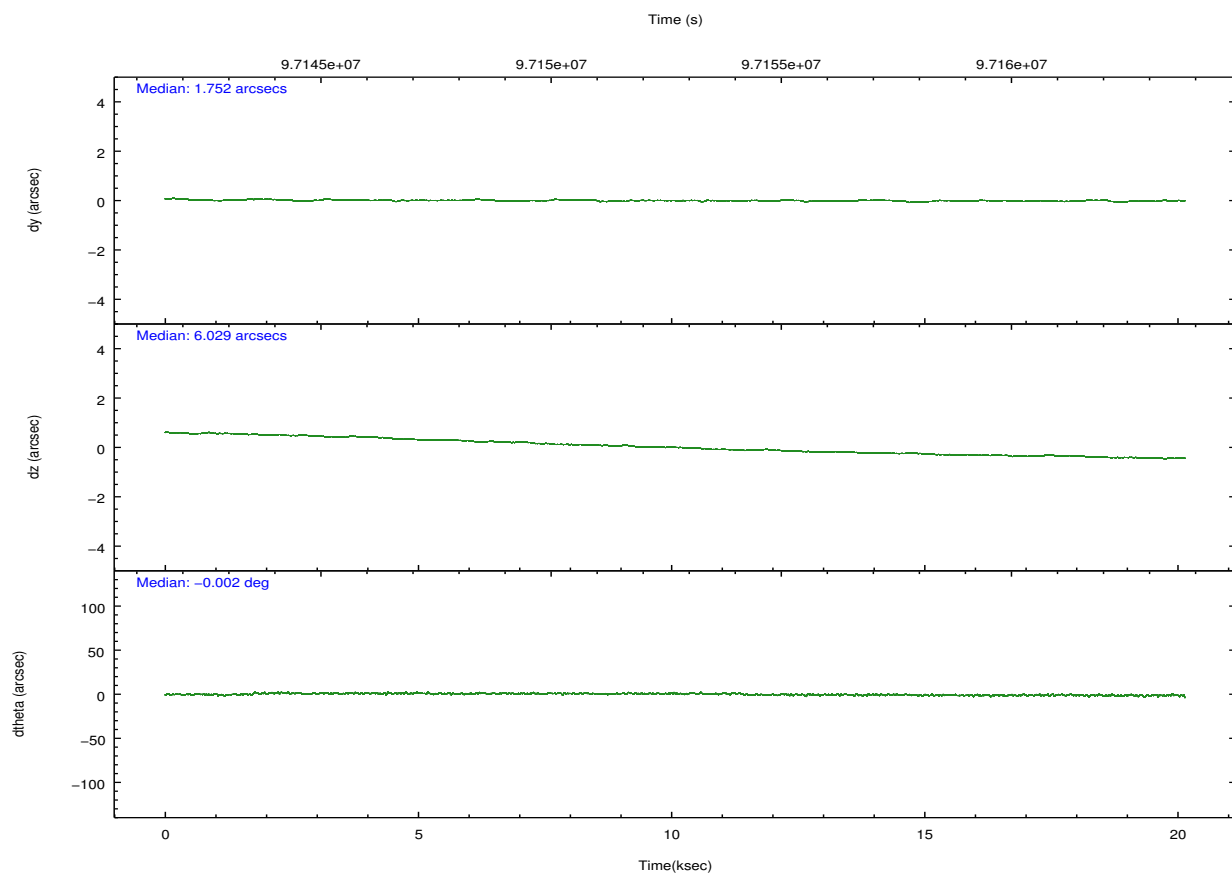
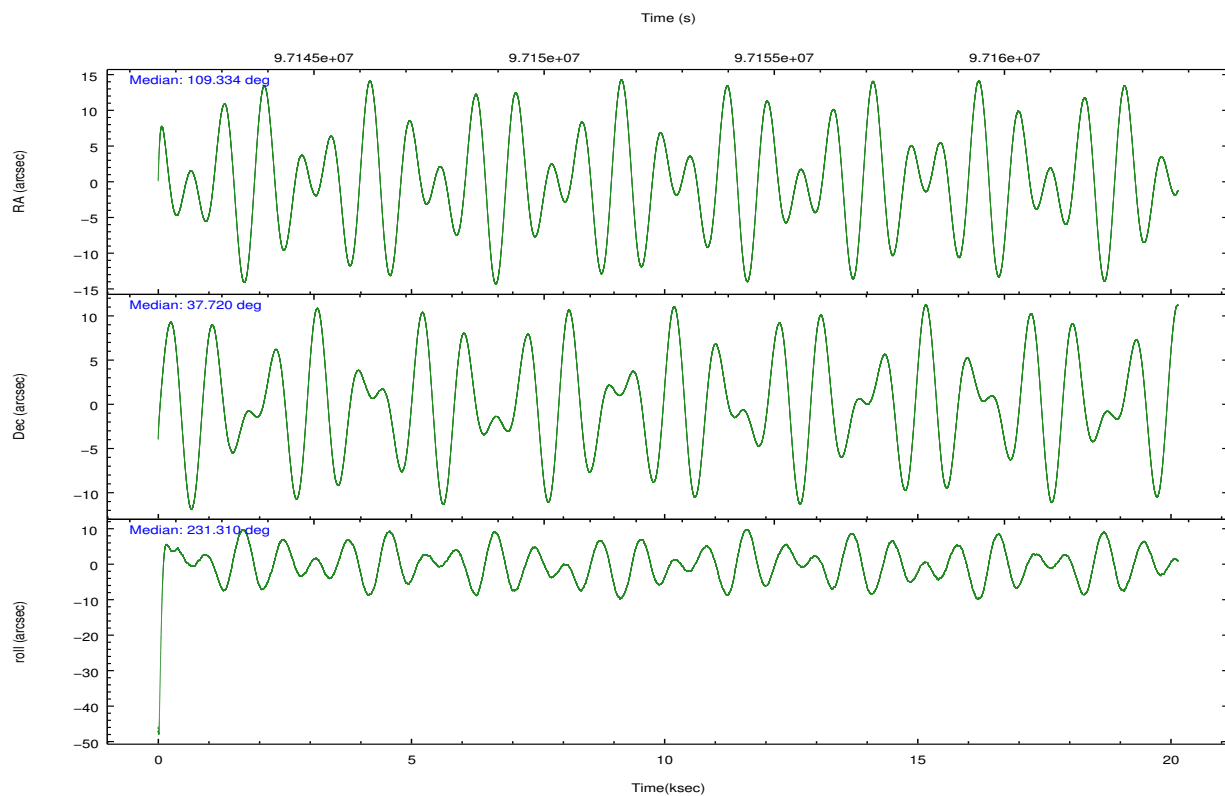
	ccd 0	ccd 1	ccd 2	ccd 3	ccd 6		ccd 0	ccd 1	ccd 2	ccd 3	ccd 6
level 1 events	158945	164639	205096	195858	196695	grade 0 events	10883	8662	12792	15586	11397
rejected events	134175	144005	177230	168120	171960		6%	5%	6%	7%	5%
rejected %	84%	87%	86%	85%	87%	grade 1 events	106	64	132	97	90
							0%	0%	0%	0%	0%
						grade 2 events	7635	5151	8492	5323	7169
							4%	3%	4%	2%	3%
						grade 3 events	1573	1768	1389	1782	1555
							0%	1%	0%	0%	0%
						grade 4 events	1543	1632	2027	1731	1537
							0%	0%	0%	0%	0%
						grade 5 events	4471	4854	4459	4831	5108
							2%	2%	2%	2%	2%
						grade 6 events	3635	3845	3731	3746	3627
							2%	2%	1%	1%	1%
						grade 7 events	129099	138663	172074	162762	166212
							81%	84%	83%	83%	84%

2.2 Compared Parameters

Parameter	Planned	Actual	Parameter	Planned	Actual
Instrument	ACIS	ACIS	Obspar format version number	7	7
Detector	ACIS-01236	ACIS-01236	Obspar file type	PREDICTED	ACTUAL
Grating	NONE	NONE	Obspar update status	NONE	UPDATED
Data mode	FAINT	FAINT	Number of optional ACIS chips dropped	0	0
Observation mode	POINTING	POINTING	On-chip summing requested	N	N
[deg] Pointing RA	109.339390	109.3340994974076	Subarray requested	NONE	NONE
[deg] Pointing Dec	37.746979	37.71982802489259	Alternating exposures requested	N	N
[deg] Pointing Roll	231.098353	231.3102401554214	[s] Primary exposure time	0.000000	3.1
[mm] SIM focus pos	-0.782348	-0.7809083437167272			
[mm] SIM defocus	0	0.001439871863259334			
[mm] SIM translation stage pos	-225.840463	-225.8433433320239			
[mm] SIM translation stage offset	-7.752	-7.749109670905796			
[s] Observation start time (MET)	97142762.184000	97141592.42025			
Observation start date	2001-01-29T08:04:58	2001-01-29T07:46:32			
[s] Observation end time (MET)	97162762.184000	97163977.908611			
Observation end date	2001-01-29T13:38:18	2001-01-29T13:59:37			
Read mode	TIMED	TIMED			

2.3 Aspect



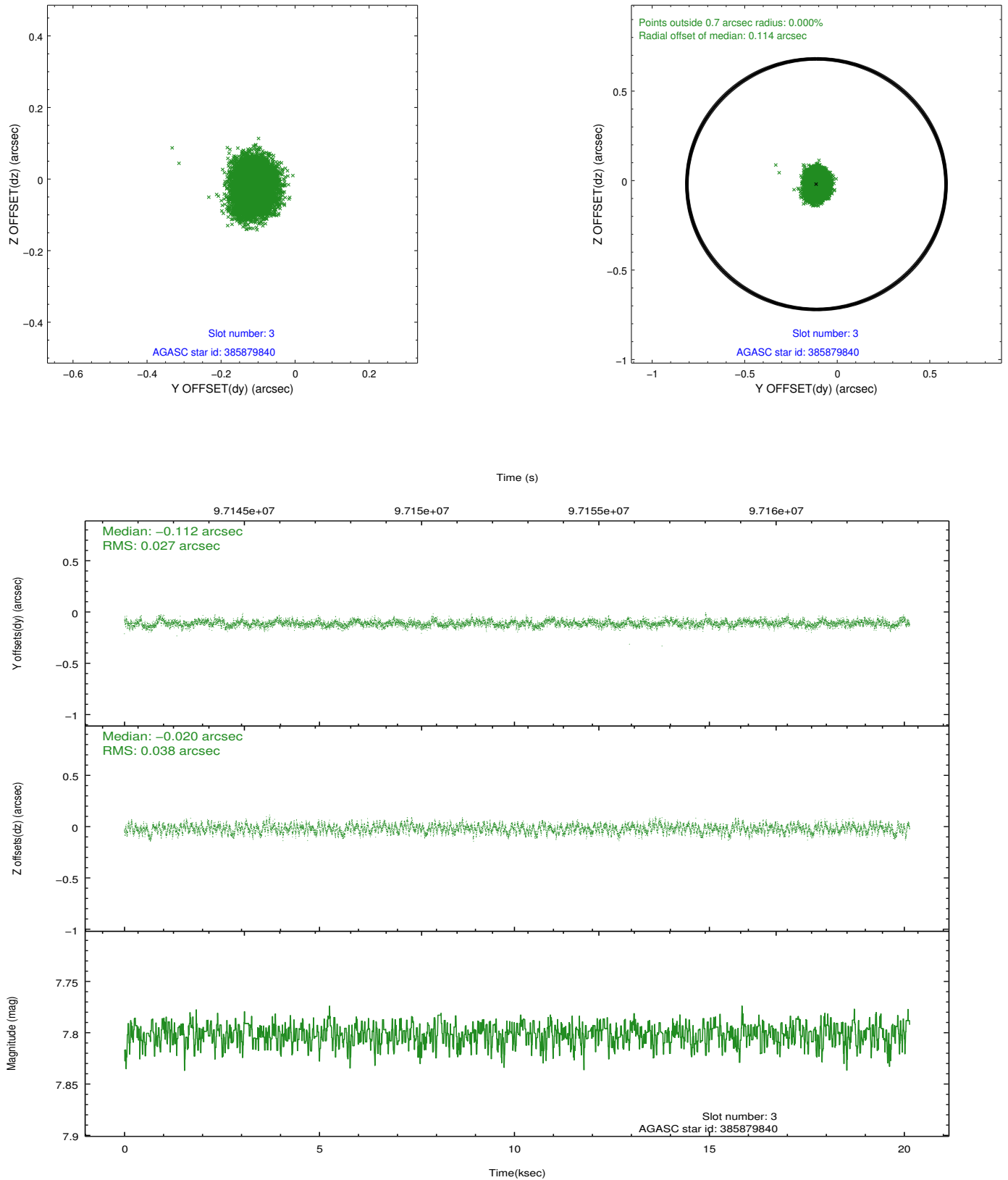


Slot Statistics

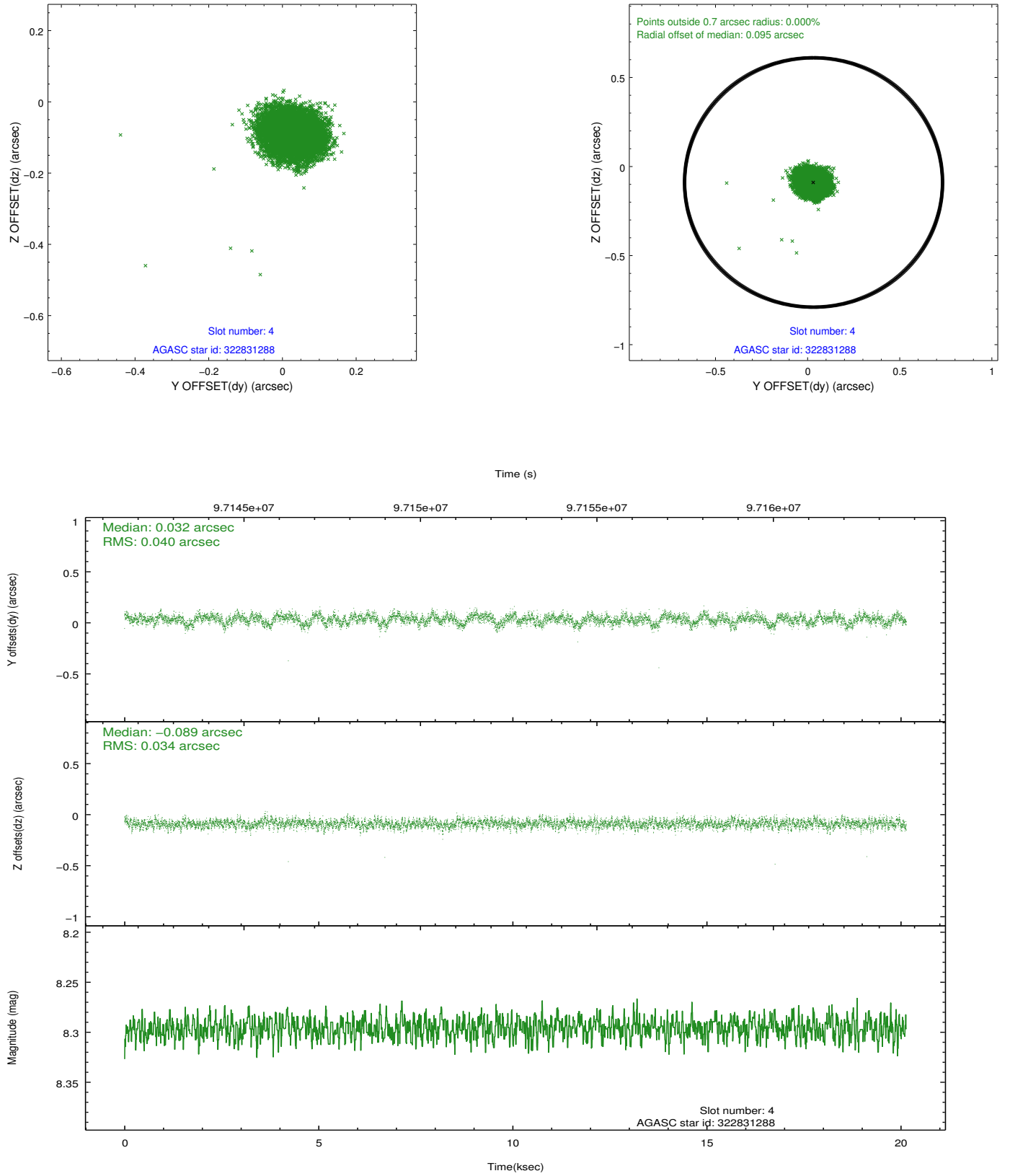
slot	status	id	mag	n_pts	med_dy	med_dz	dr1	dr2	ra	dec	mean_y	mean_z
0	FID	ACIS-I-2	7.17	4912	-0.040	-0.034	0.011	0.019	0.000000	0.000000	-756.69	-993.88
1	FID	ACIS-I-4	7.15	4911	-0.057	0.040	0.007	0.012	0.000000	0.000000	2157.23	912.20
2	FID	ACIS-I-5	7.22	4912	-0.004	0.063	0.010	0.017	0.000000	0.000000	-1809.84	909.29
3	GUIDE	385879840	7.80	9824	-0.112	-0.020	0.050	0.081	109.502710	38.364188	-2019.93	-1037.36
4	GUIDE	322831288	8.30	9825	0.032	-0.089	0.055	0.090	109.203187	37.248139	1641.48	823.17
5	GUIDE	385877528	8.44	9823	-0.027	-0.061	0.059	0.096	109.415669	38.390918	-1939.98	-1288.84
6	GUIDE	322833032	9.45	9821	0.001	0.116	0.097	0.156	108.740721	37.290603	2350.11	-306.54
7	GUIDE	322831016	9.66	9814	0.112	0.055	0.117	0.188	109.551352	37.195307	1162.88	1719.37

2.4 Star Slots

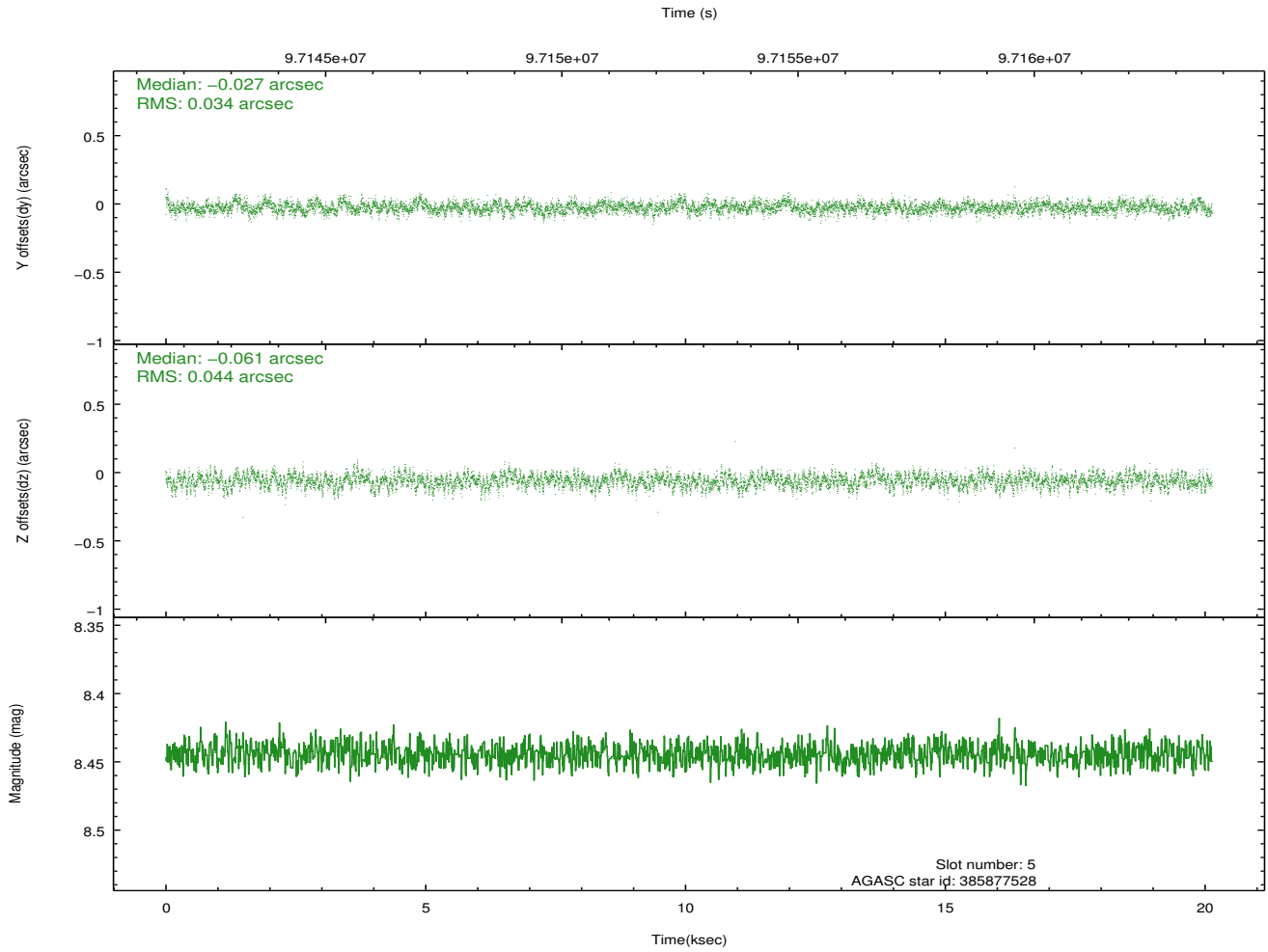
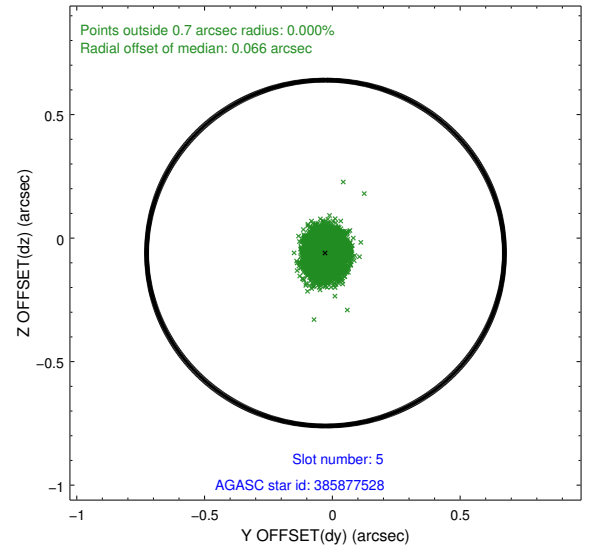
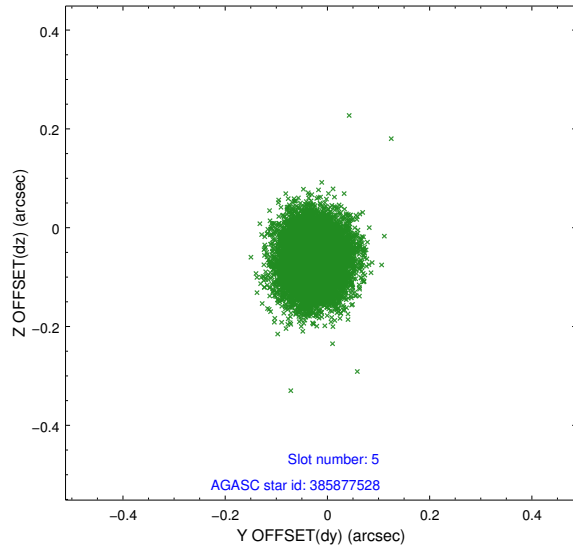
2.4.1 Slot 3



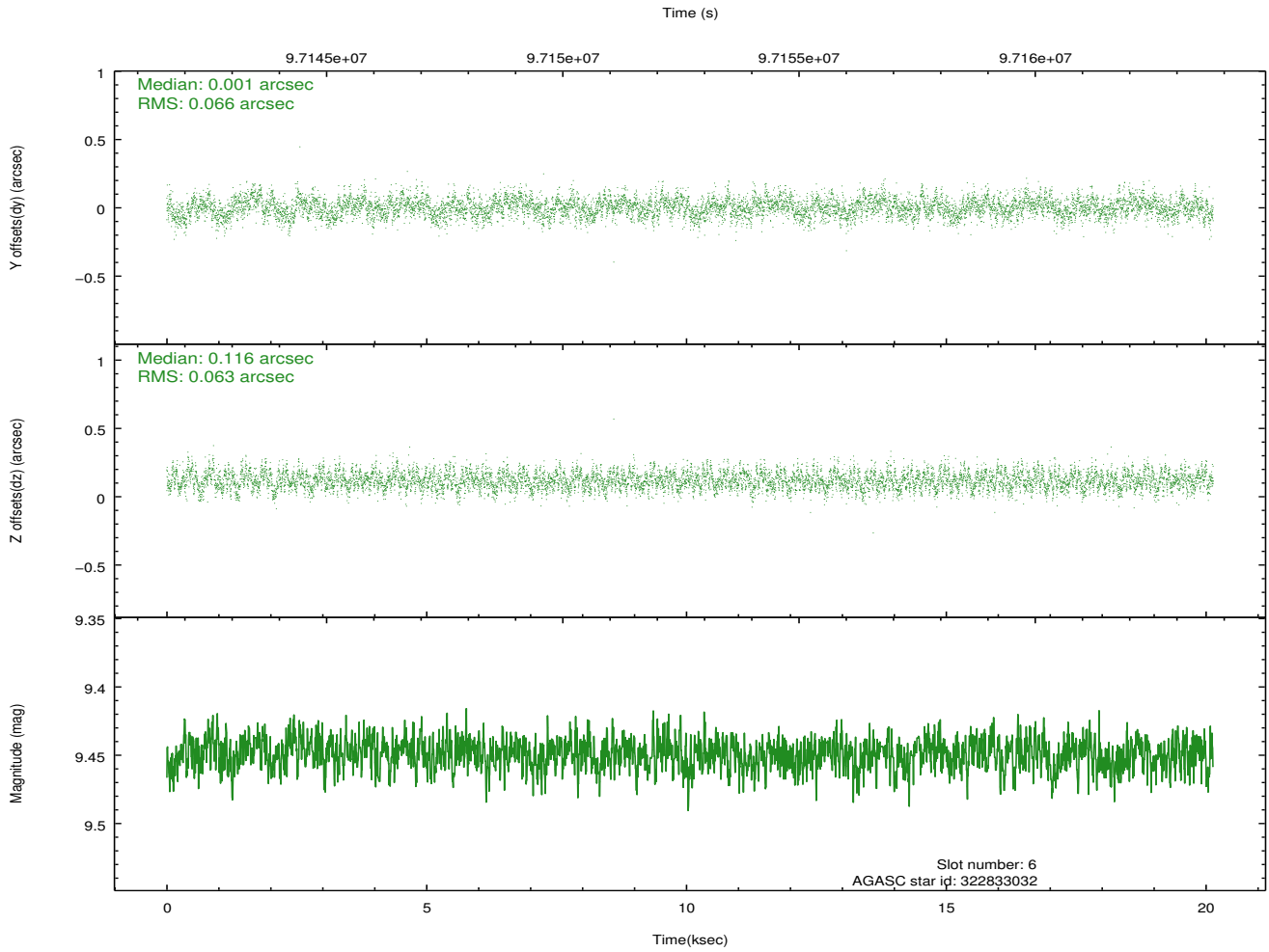
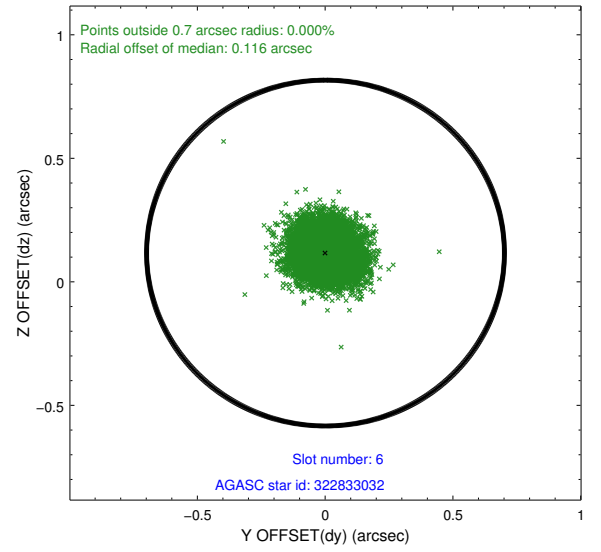
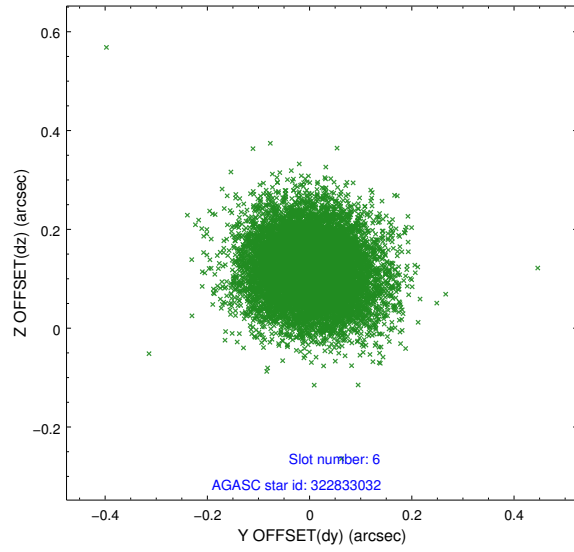
2.4.2 Slot 4



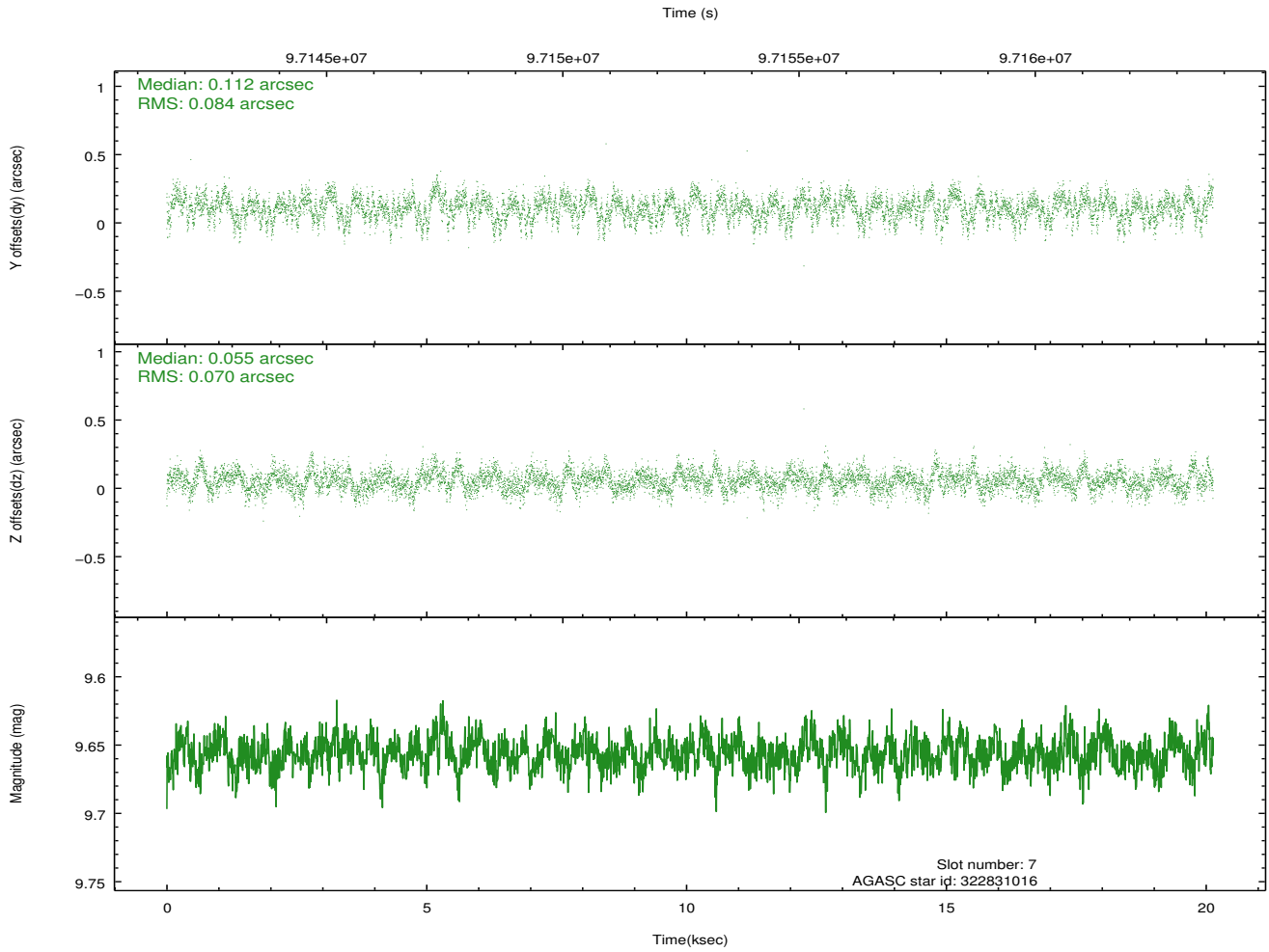
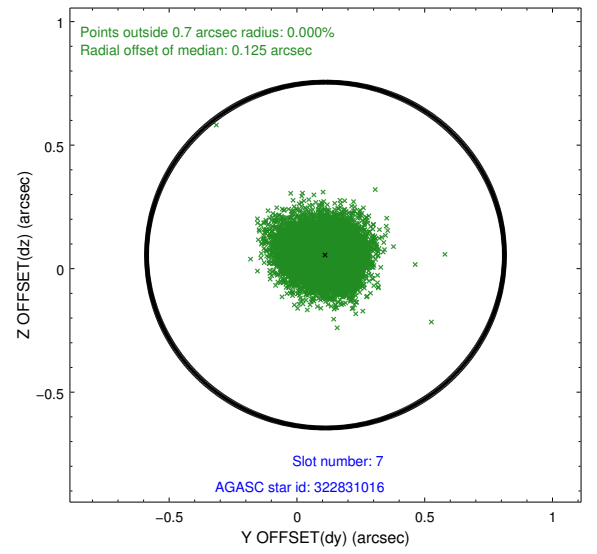
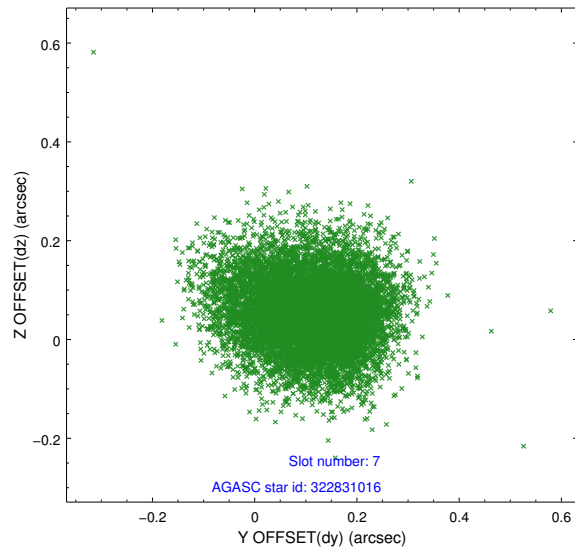
2.4.3 Slot 5



2.4.4 Slot 6

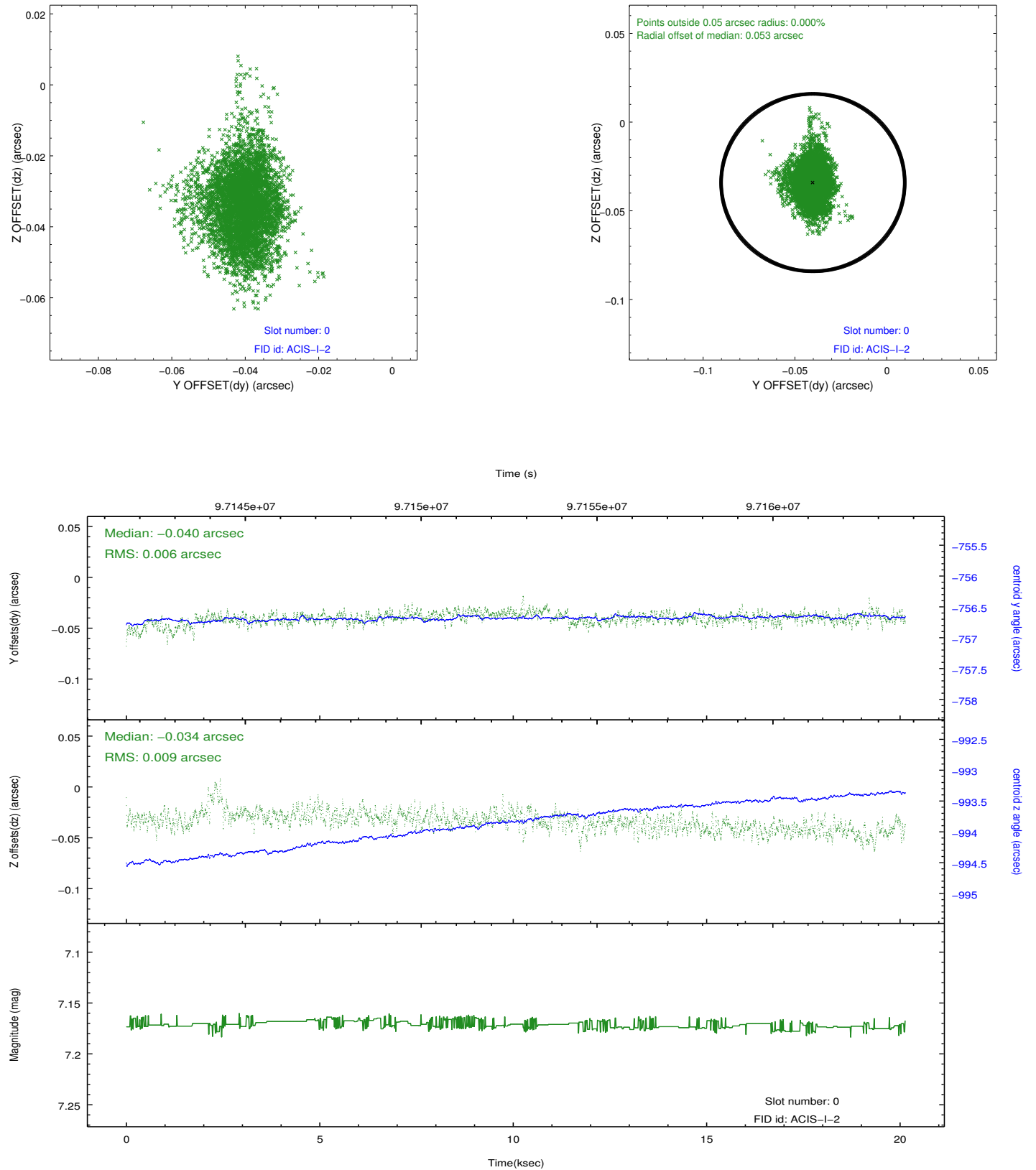


2.4.5 Slot 7

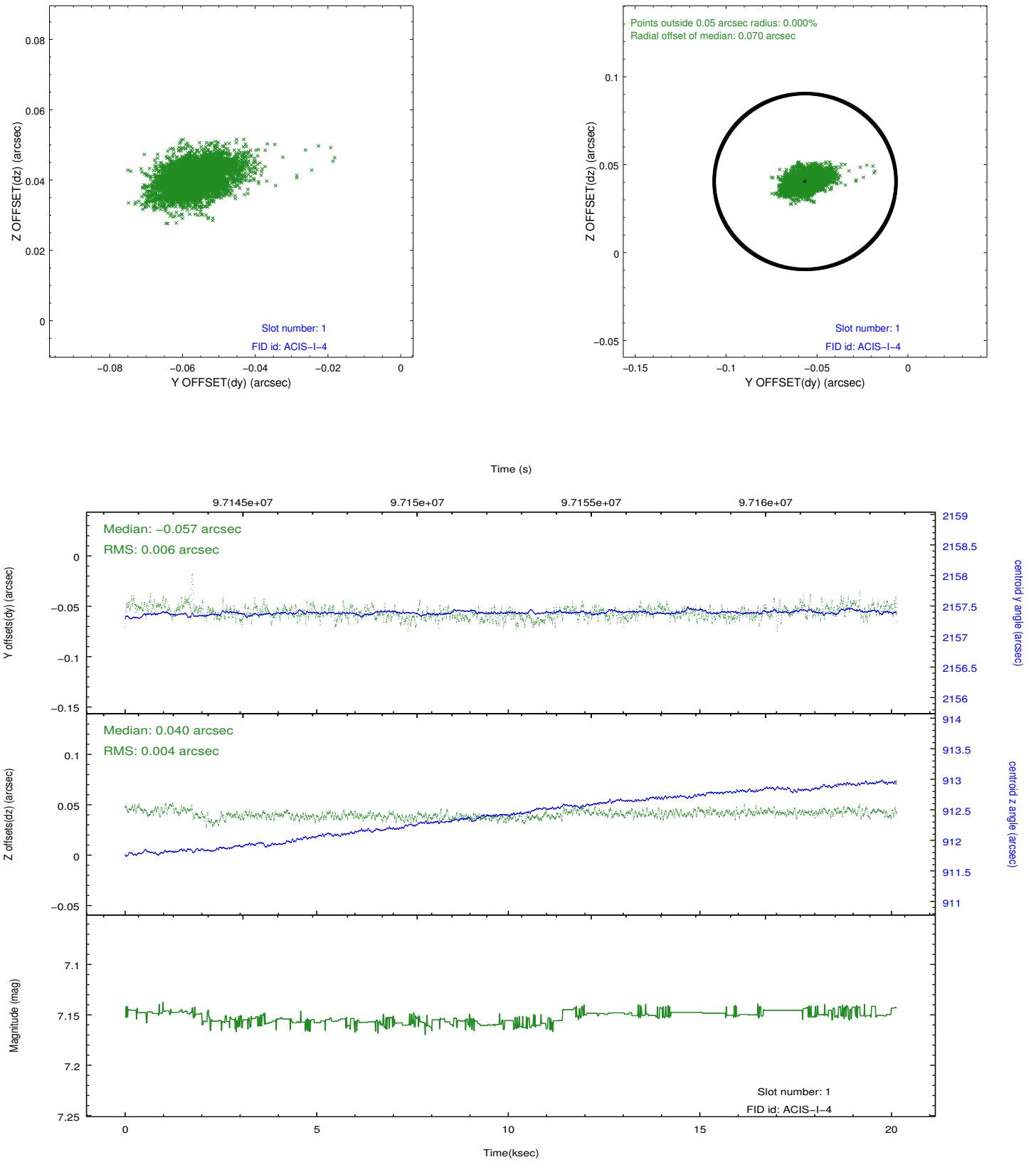


2.5 FID Slots

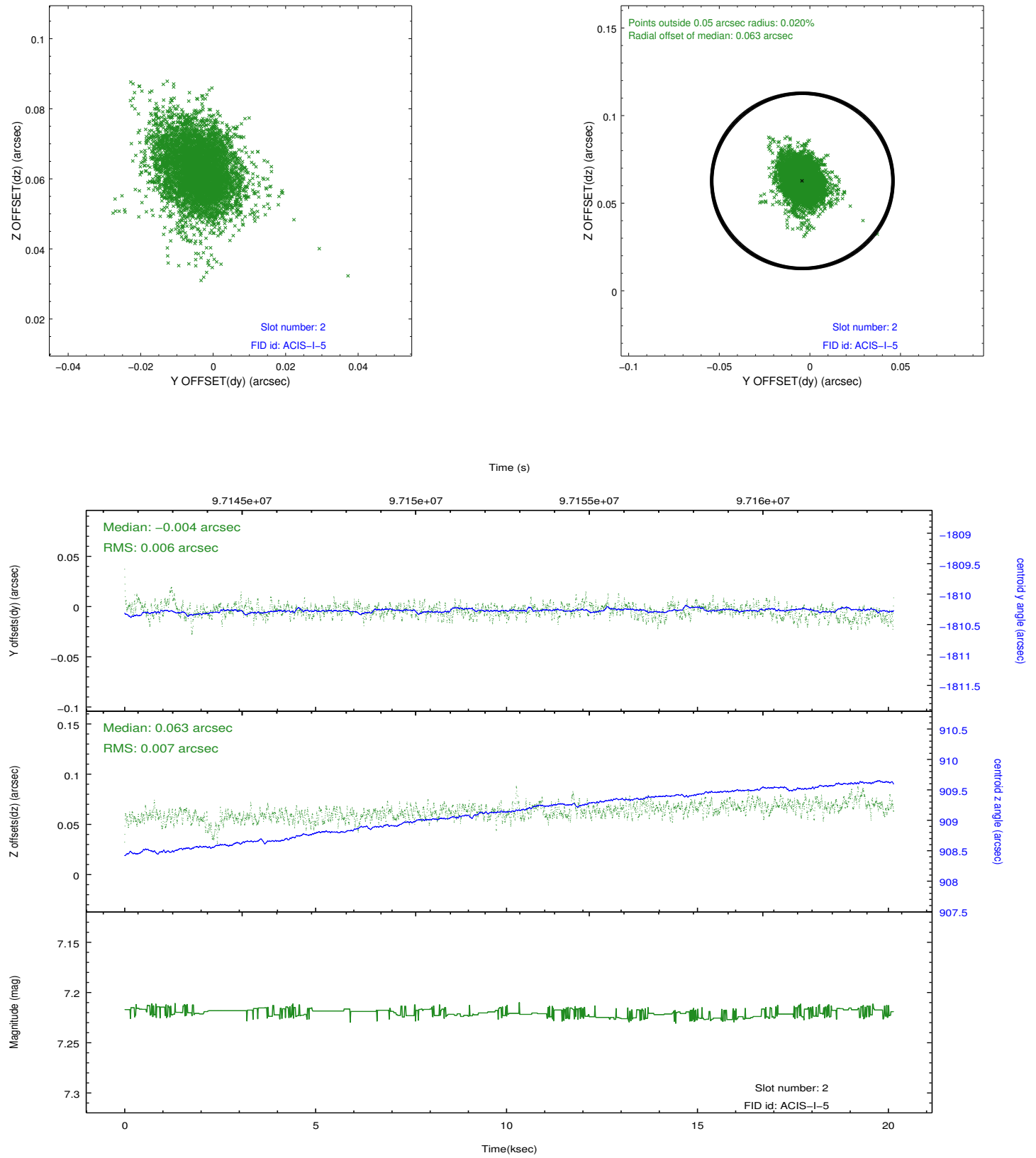
2.5.1 Slot 0



2.5.2 Slot 1



2.5.3 Slot 2



A Summary

A.1 Status

V&V Scientist	Jen Lauer
V&V Date (YYYY-MM-DD)	2012.09.17
V&V Edition	1
V&V Disposition and Status	OK
V&V Charge Time	20.134

A.2 Comments