

V&V Reference Report

L2 ASCDS Version : 8.4.5

Observation 1535 - L2 Version 3
Chandra X-Ray Center

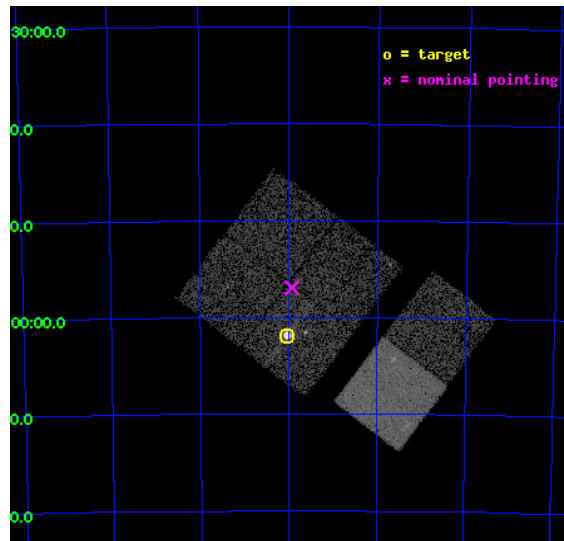
L2 Processing Date : Sep 17 2012

Contents

1	Front	2
2	OBI	3
2.1	OBI	3
2.1.1	Images	3
2.1.2	Bias	3
2.1.3	Parameters	4
2.1.4	Events	4
2.2	Compared Parameters	5
2.3	Aspect	6
2.4	Star Slots	9
2.4.1	Slot 3	9
2.4.2	Slot 4	10
2.4.3	Slot 5	11
2.4.4	Slot 6	12
2.4.5	Slot 7	13
2.5	FID Slots	14
2.5.1	Slot 0	14
2.5.2	Slot 1	15
2.5.3	Slot 2	16
A	Summary	17
A.1	Status	17
A.2	Comments	17

1 Front

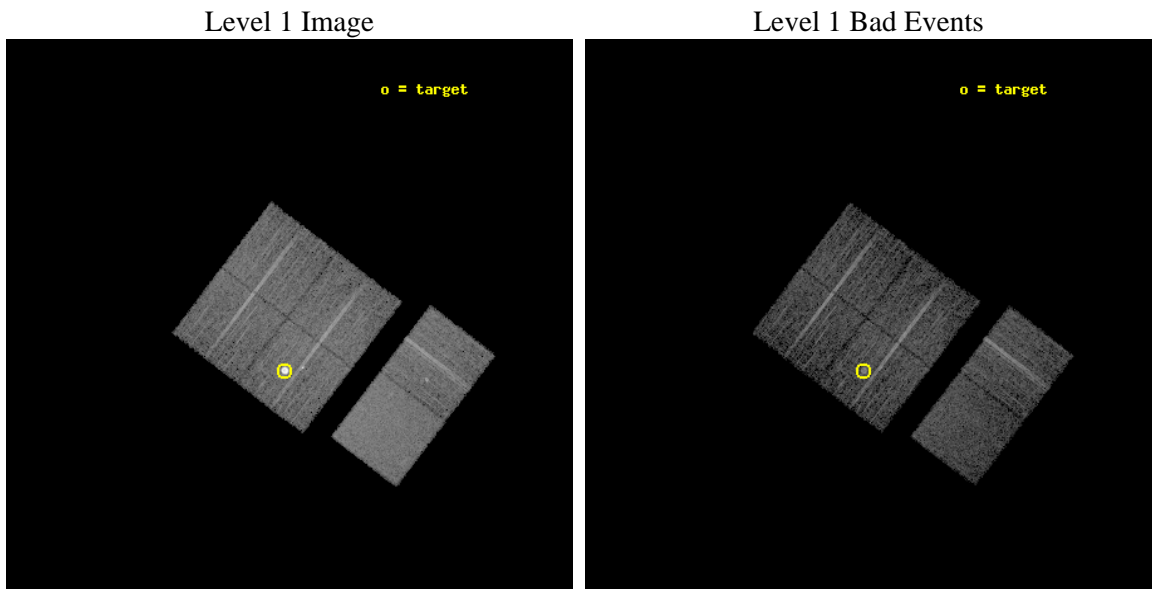
seq_num	590144	Sequence number
obs_id	1535	Observation id
title	ACIS CALIBRATION OBSERVATION OF THE SUPERNOVA REMNANT E0102-72 (JUNE 2001)	Proposal title
observer	Dr. CXC Calibration	Principal investigator
object	E0102-72.3 [Chip I3, T=120, Offsets=-4,2,0]	Source name
dtcycle	0	
cycle	P	events from which exps? Prim/Second/Both
ra_targ	16.01	Observer's specified target RA [deg]
dec_targ	-72.032028	Observer's specified target Dec [deg]
ra_nom	15.983391614062	Nominal RA [deg]
dec_nom	-71.949155425085	Nominal Dec [deg]
roll_nom	127.31747505708	Nominal Roll [deg]
revision	3	Processing version of data
ontime	7503.8771262169	Sum of GTIs [s]
livetime	7408.8585157524	Livetime [s]
ontime0	7510.3590467274	Sum of GTIs [s]
ontime1	7513.6000069827	Sum of GTIs [s]
ontime2	7513.6000069827	Sum of GTIs [s]
ontime3	7503.8771262169	Sum of GTIs [s]
ontime6	7513.6000069827	Sum of GTIs [s]
ontime7	7513.6000069827	Sum of GTIs [s]
l2events	76300	Number of level 2 events



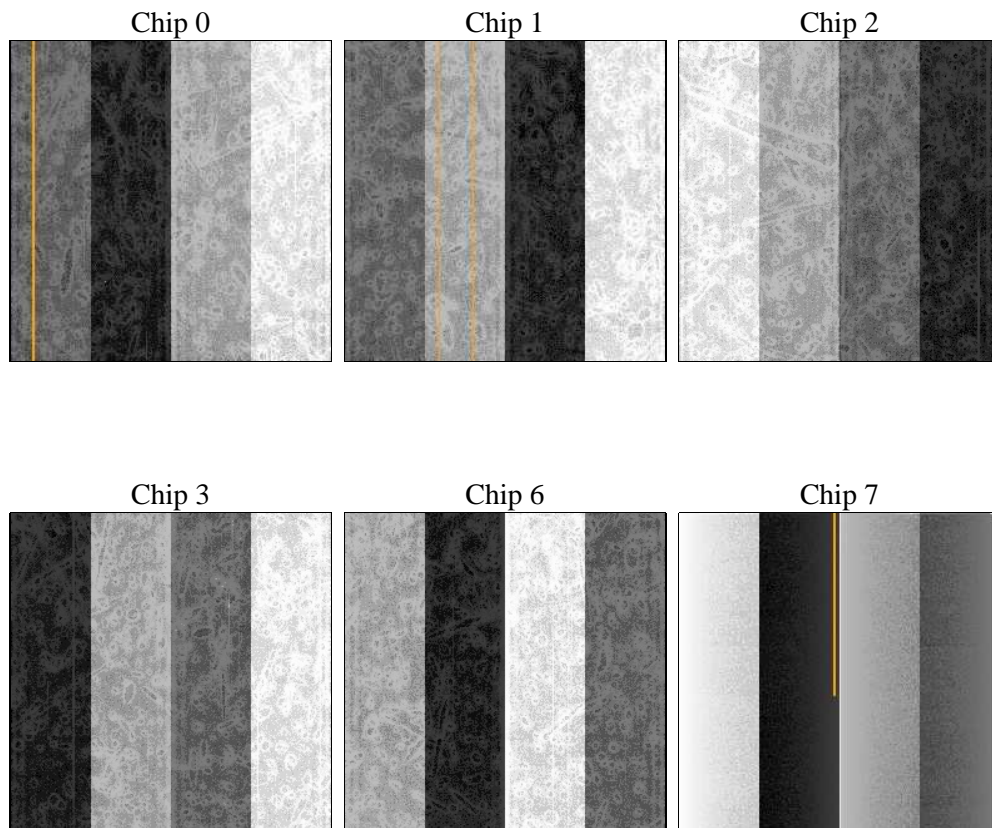
2 OBI

2.1 OBI

2.1.1 Images



2.1.2 Bias



2.1.3 Parameters

obi_num	0	Obi number	sched_exp_time	7755.000000	[s] Scheduled observation exposure time
ascdsver	8.4.5	Processing system revision	ontime	7503.8771262169	Sum of GTIs [s]
caldsver	4.5.1.1	 	ontime0	7510.3590467274	Sum of GTIs [s]
date	2012-09-17T18:01:23	Date and time of file creation	ontime1	7513.6000069827	Sum of GTIs [s]
revision	3	Processing version of data	ontime2	7513.6000069827	Sum of GTIs [s]
			ontime3	7503.8771262169	Sum of GTIs [s]
			ontime6	7513.6000069827	Sum of GTIs [s]
			ontime7	7513.6000069827	Sum of GTIs [s]
			l1events	333796	Number of level 1 events

2.1.4 Events

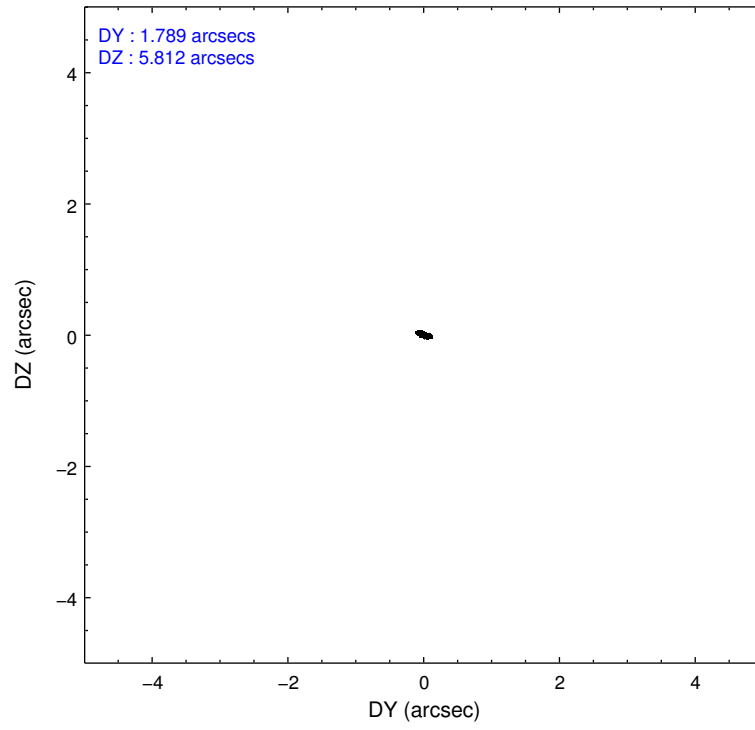
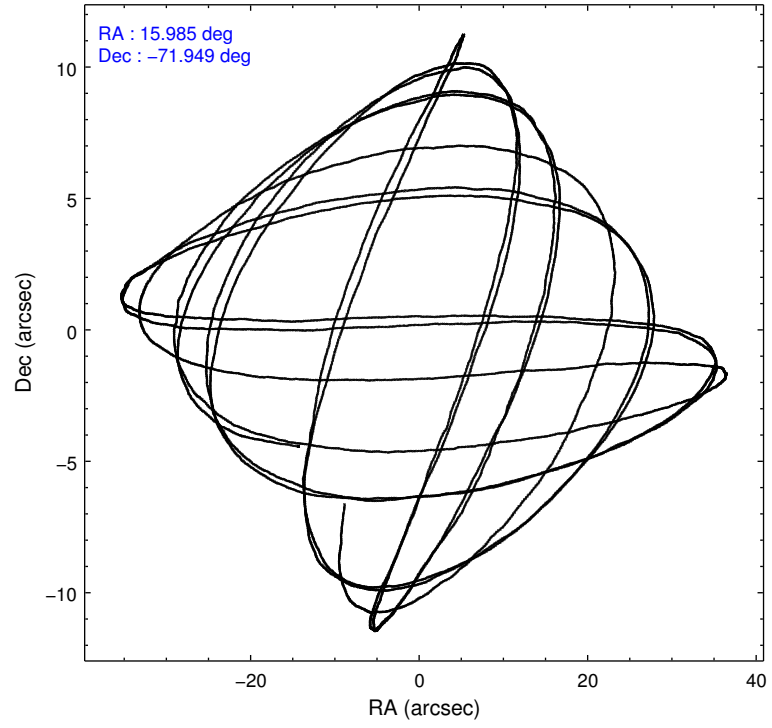
	ccd 0	ccd 1	ccd 2	ccd 3	ccd 6	ccd 7		ccd 0	ccd 1	ccd 2	ccd 3	ccd 6	ccd 7
level 1 events	46725	44858	48576	76899	53409	63329	grade 0 events	2386	2555	2628	26600	2803	2669
rejected events	41059	38771	42810	43902	47156	36798		5%	5%	5%	34%	5%	4%
rejected %	87%	86%	88%	57%	88%	58%	grade 1 events	24	22	22	283	24	64
								0%	0%	0%	0%	0%	0%
							grade 2 events	1286	1251	1171	3104	1205	5188
								2%	2%	2%	4%	2%	8%
							grade 3 events	545	589	508	1043	566	2471
								1%	1%	1%	1%	1%	3%
							grade 4 events	503	556	531	1015	559	2418
								1%	1%	1%	1%	1%	3%
							grade 5 events	1761	1856	1579	1876	2115	5903
								3%	4%	3%	2%	3%	9%
							grade 6 events	952	1138	934	1264	1130	13802
								2%	2%	1%	1%	2%	21%
							grade 7 events	39268	36891	41203	41714	45007	30814
								84%	82%	84%	54%	84%	48%

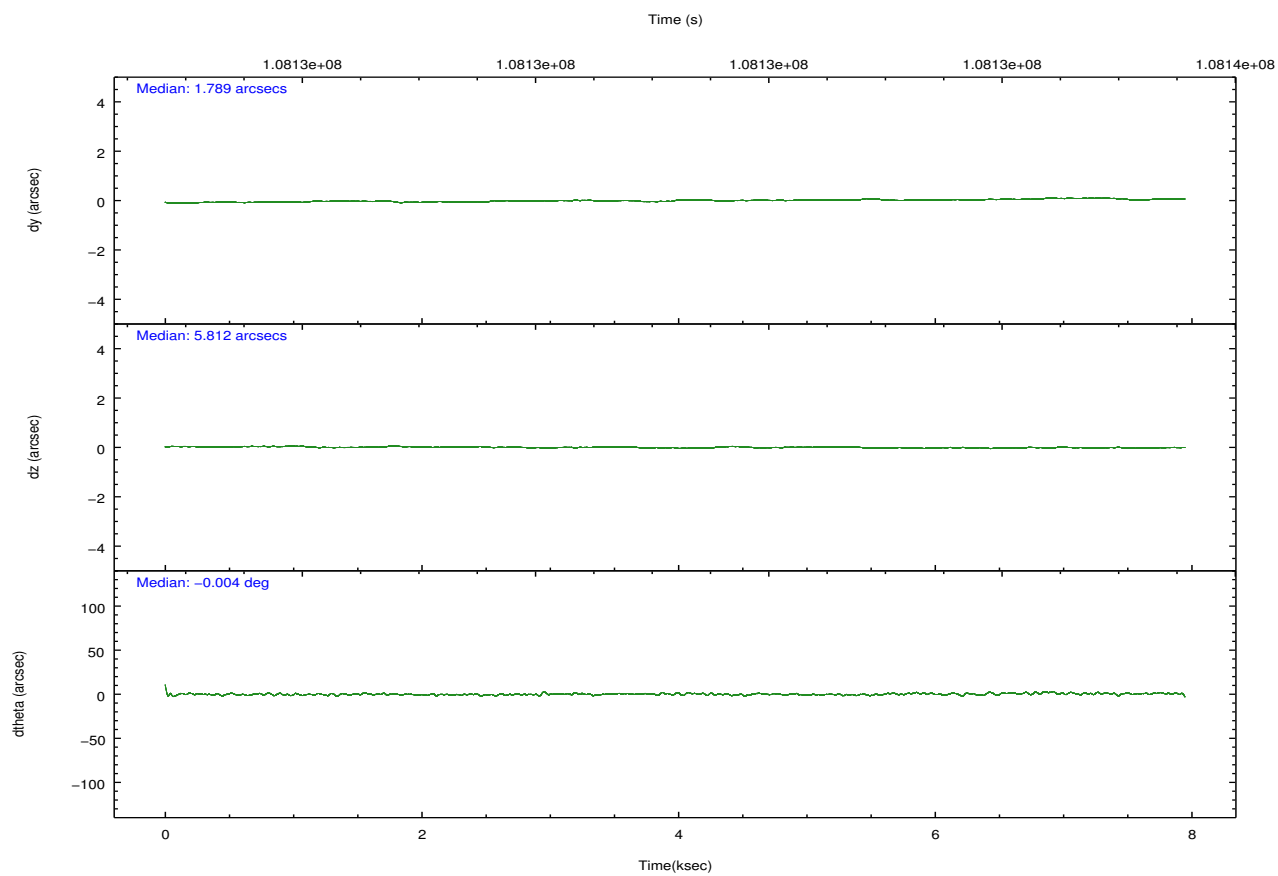
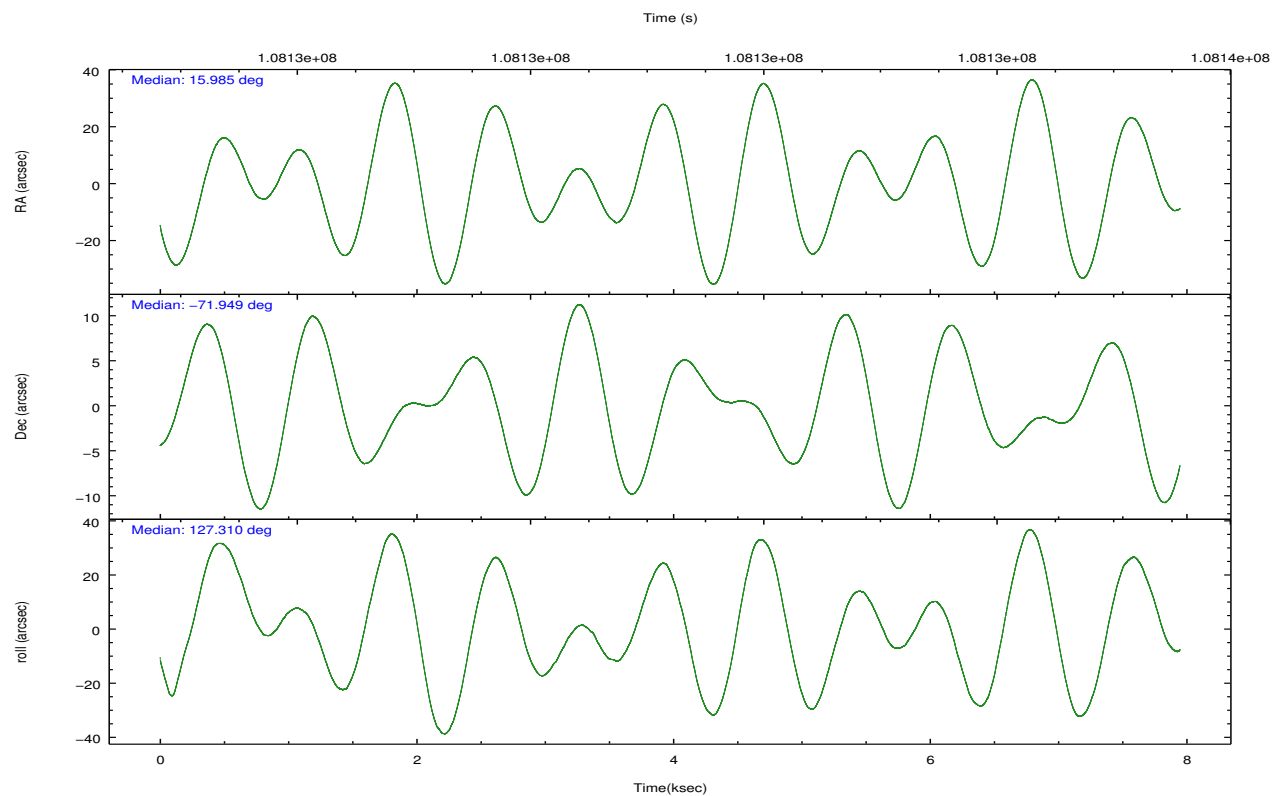
2.2 Compared Parameters

Parameter	Planned	Actual
Instrument	ACIS	ACIS
Detector	ACIS-012367	ACIS-012367
Grating	NONE	NONE
Data mode	FAINT	FAINT
Observation mode	POINTING	POINTING
[deg] Pointing RA	16.065338	15.98339161406207
[deg] Pointing Dec	-71.959671	-71.94915542508544
[deg] Pointing Roll	127.186702	127.3174750570816
[s] Window start time (MET)	107740864.184000	107740864.184000
[s] Window stop time (MET)	110246464.184000	110246464.184000
[mm] SIM focus pos	-0.782348	-0.7809083437167272
[mm] SIM defocus	0	0.001439871863259334
[mm] SIM translation stage pos	-233.592463	-233.5874344608287
[mm] SIM translation stage offset	0	-0.005018542100998502
[s] Observation start time (MET)	108127415.184000	108127038.54566
Observation start date	2001-06-05T11:22:31	2001-06-05T11:17:18
[s] Observation end time (MET)	108135170.184000	108135304.14598
Observation end date	2001-06-05T13:31:46	2001-06-05T13:35:04
Read mode	TIMED	TIMED

Parameter	Planned	Actual
Obspar format version number	7	7
Obspar file type	PREDICTED	ACTUAL
Obspar update status	NONE	UPDATED
Number of optional ACIS chips dropped	0	0
On-chip summing requested	N	N
Subarray requested	NONE	NONE
Alternating exposures requested	N	N
[s] Primary exposure time	0.000000	3.2

2.3 Aspect



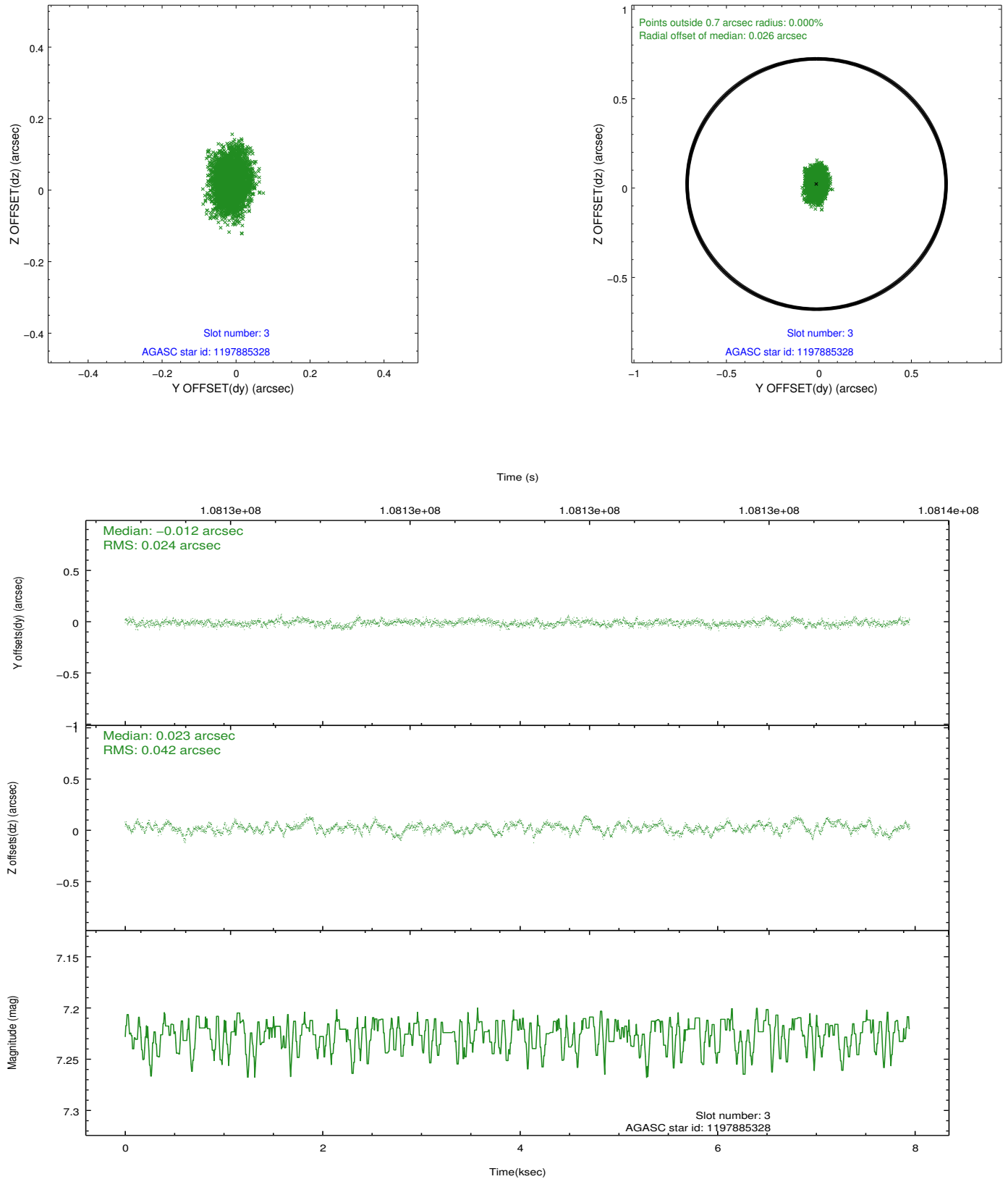


Slot Statistics

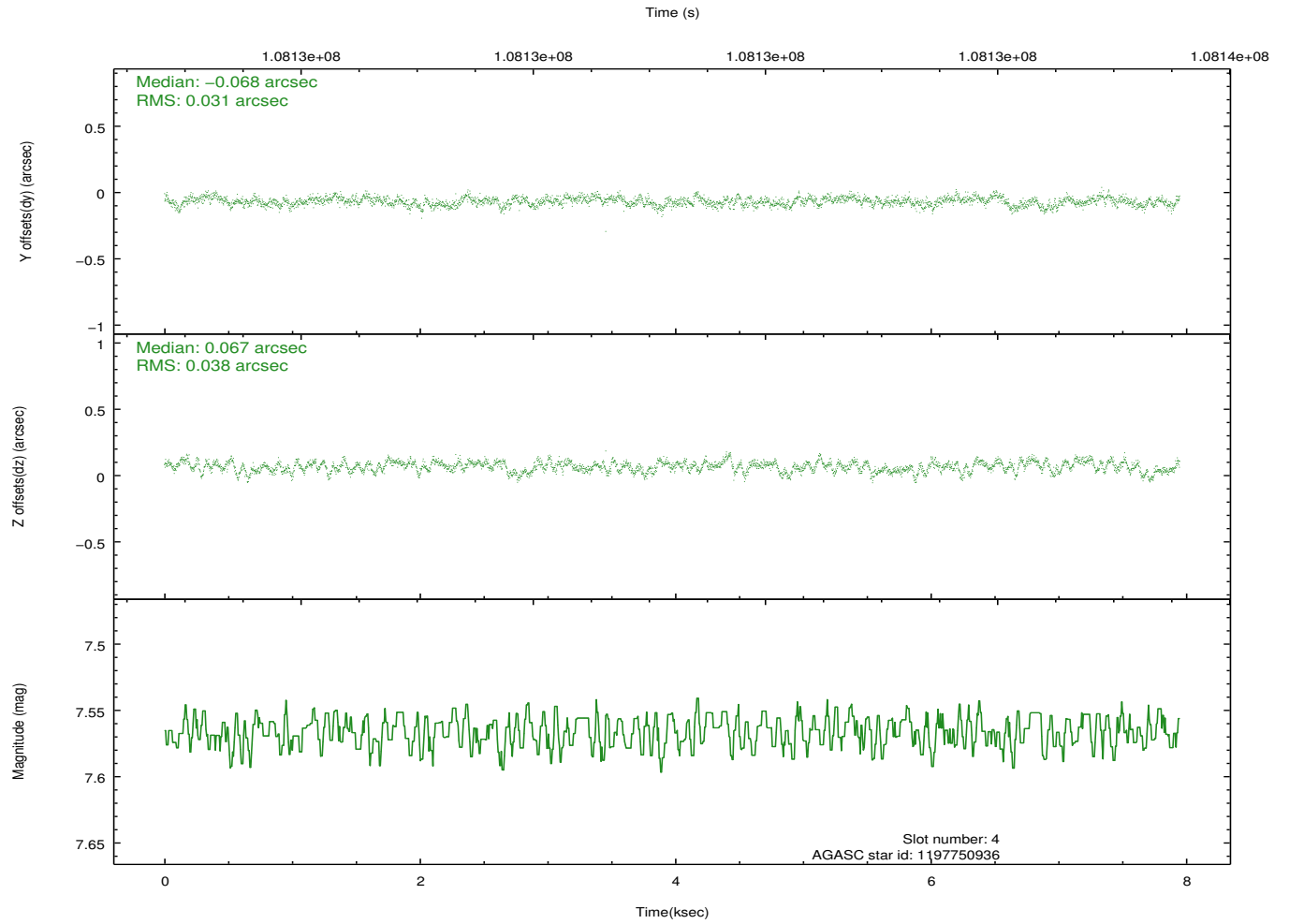
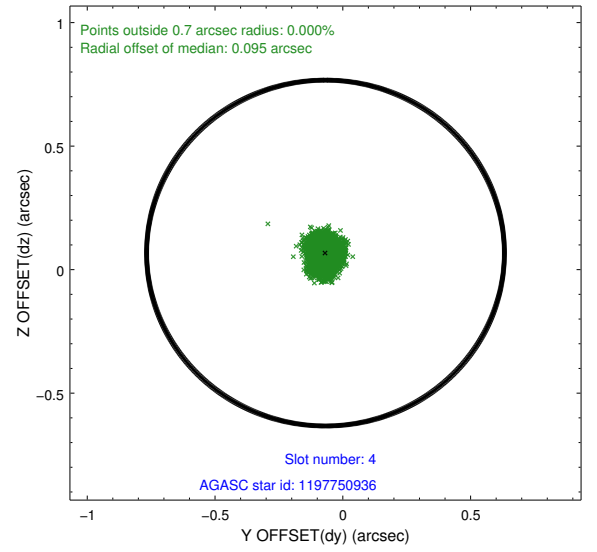
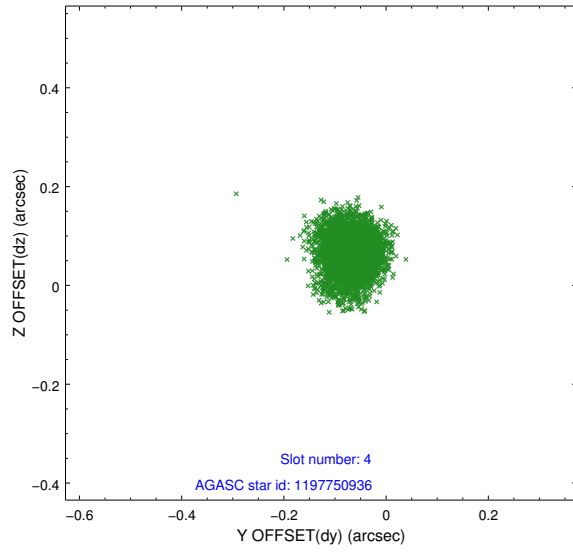
slot	status	id	mag	n_pts	med_dy	med_dz	dr1	dr2	ra	dec	mean_y	mean_z
0	FID	ACIS-I-2	7.15	1936	-0.064	-0.020	0.007	0.011	0.000000	0.000000	-756.17	-835.58
1	FID	ACIS-I-4	7.18	1935	-0.020	0.033	0.008	0.014	0.000000	0.000000	2157.56	1070.37
2	FID	ACIS-I-6	7.26	1937	-0.015	0.051	0.011	0.019	0.000000	0.000000	404.80	1713.33
3	GUIDE	1197885328	7.22	3875	-0.012	0.023	0.050	0.087	16.283090	-71.733943	499.71	-686.10
4	GUIDE	1197750936	7.57	3877	-0.068	0.067	0.052	0.086	15.387940	-71.549550	1640.42	-274.17
5	GUIDE	1197884536	8.50	3876	0.065	-0.050	0.075	0.123	17.160729	-71.835289	-393.38	-1242.81
6	GUIDE	1197878768	9.61	3873	-0.020	0.010	0.107	0.174	16.656786	-71.304581	1465.00	-1966.71
7	GUIDE	1197749416	10.28	3854	0.034	-0.045	0.157	0.246	13.610513	-71.871242	1871.89	2031.72

2.4 Star Slots

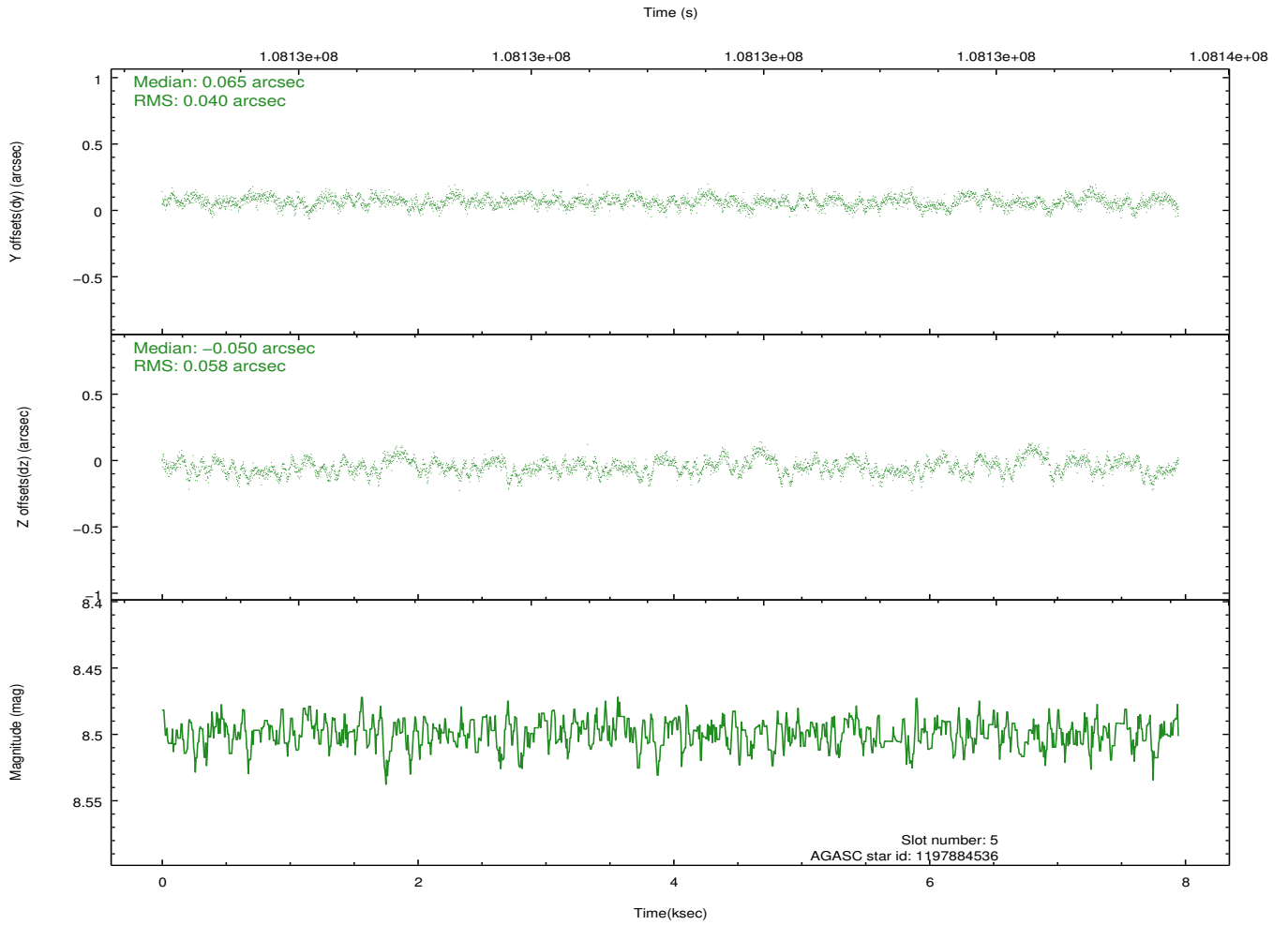
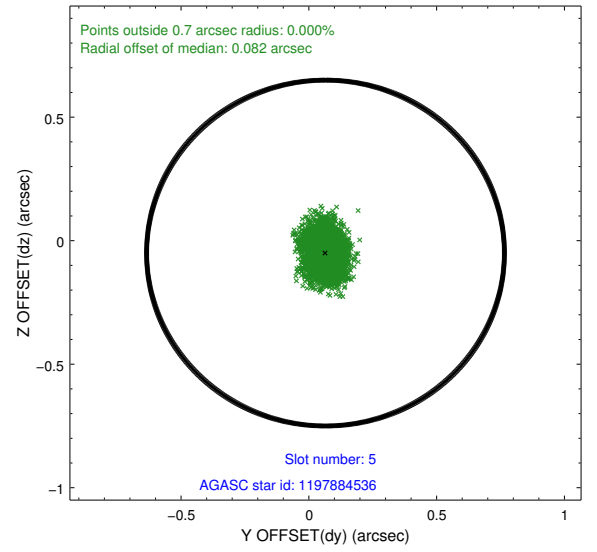
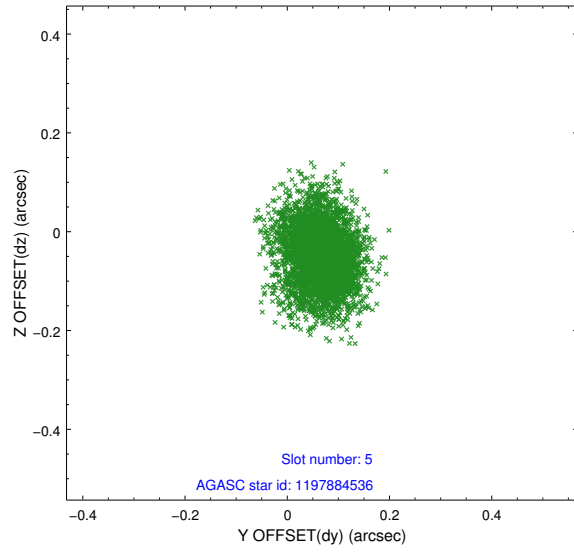
2.4.1 Slot 3



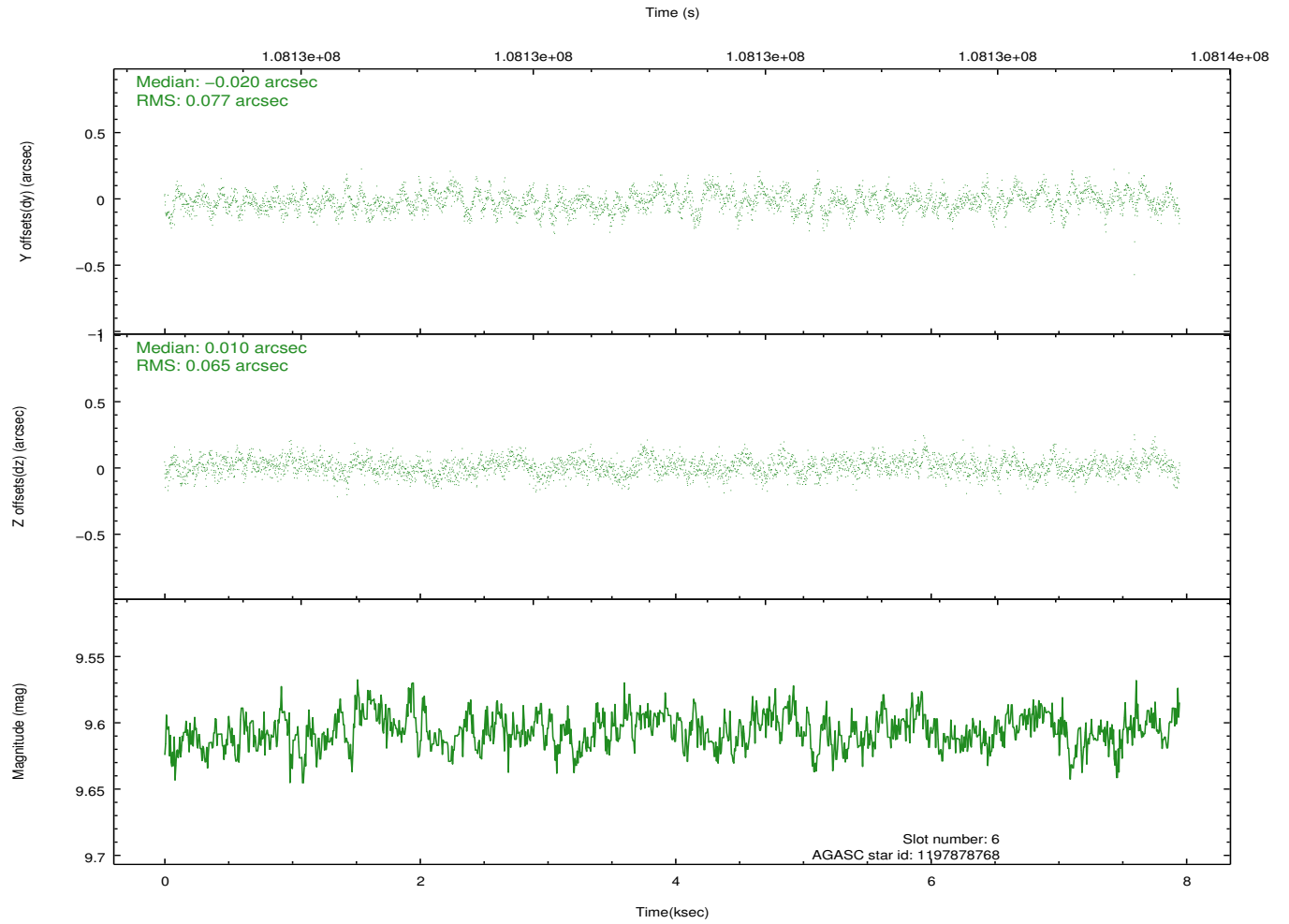
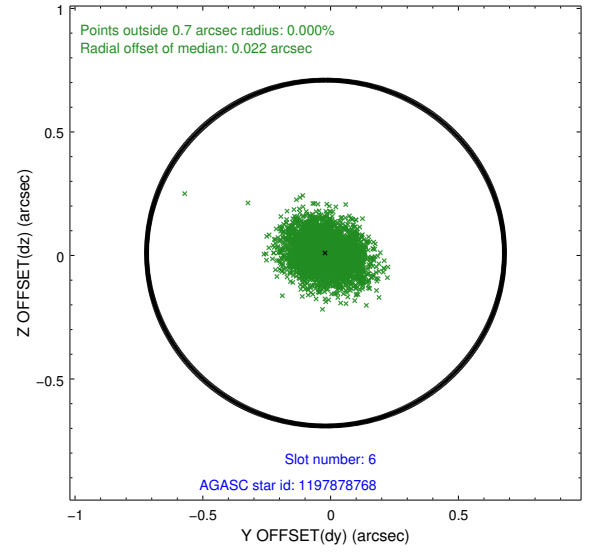
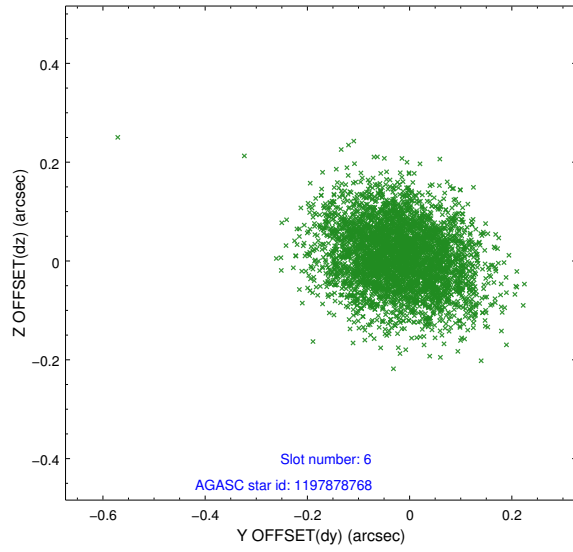
2.4.2 Slot 4



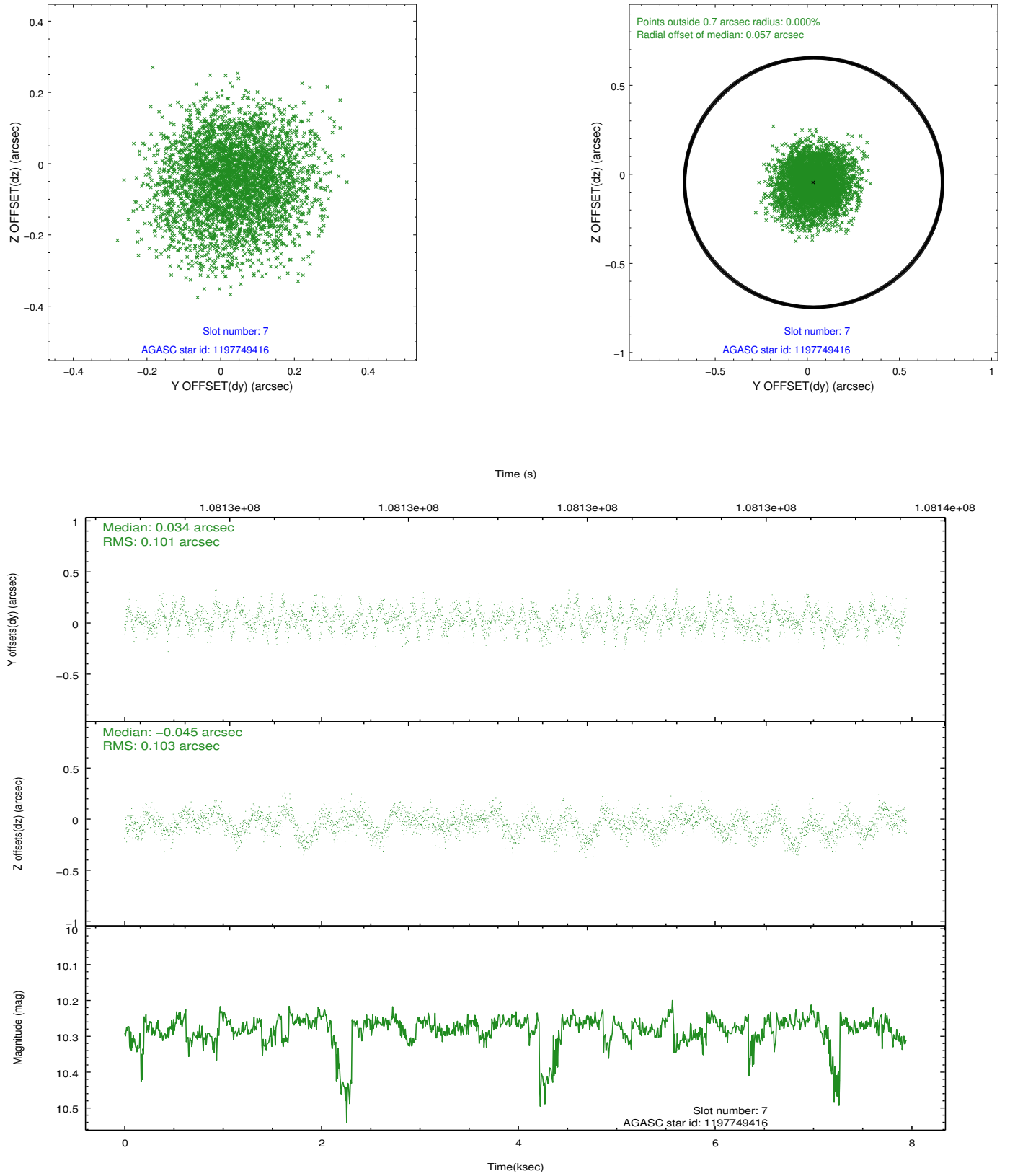
2.4.3 Slot 5



2.4.4 Slot 6

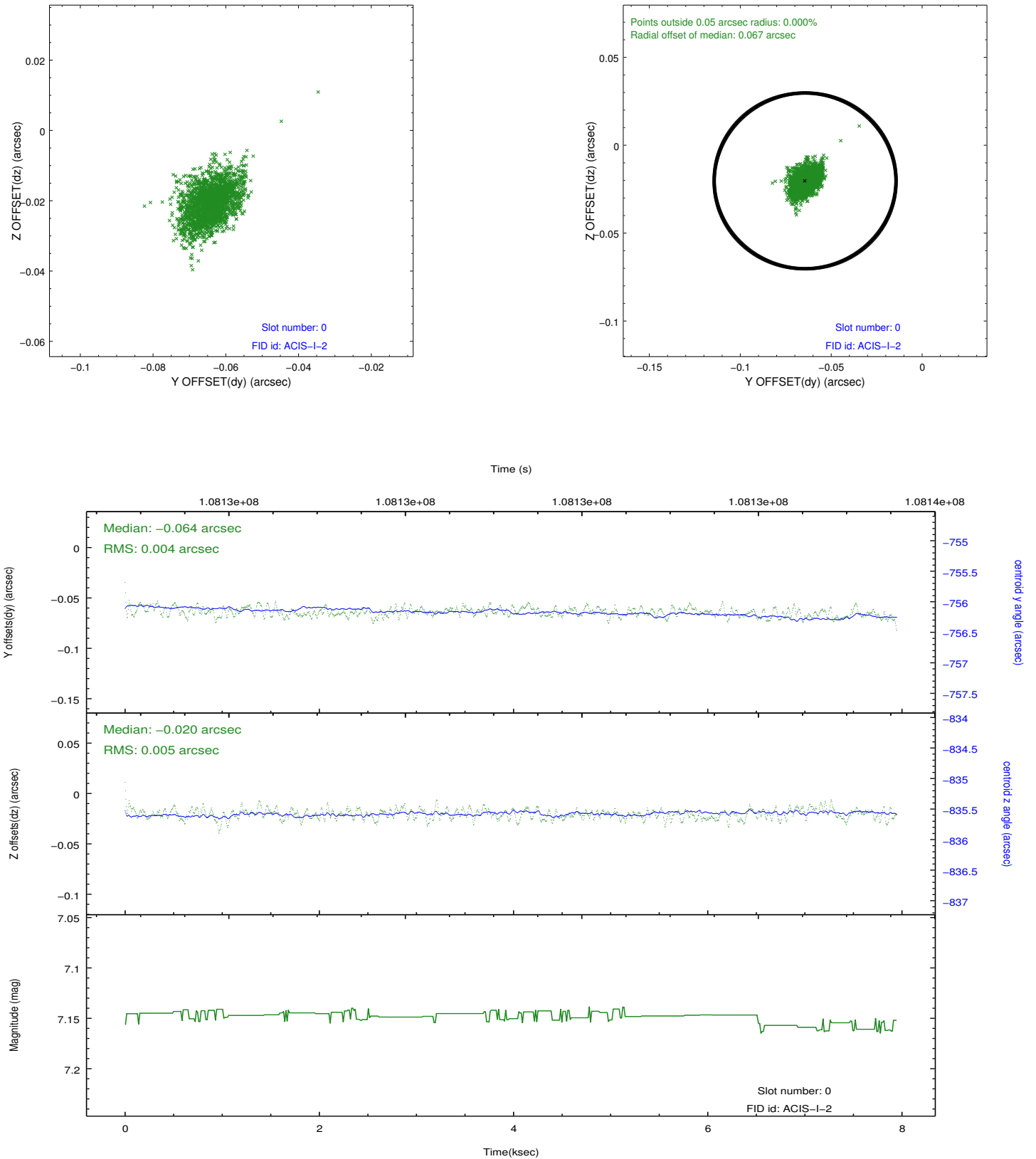


2.4.5 Slot 7

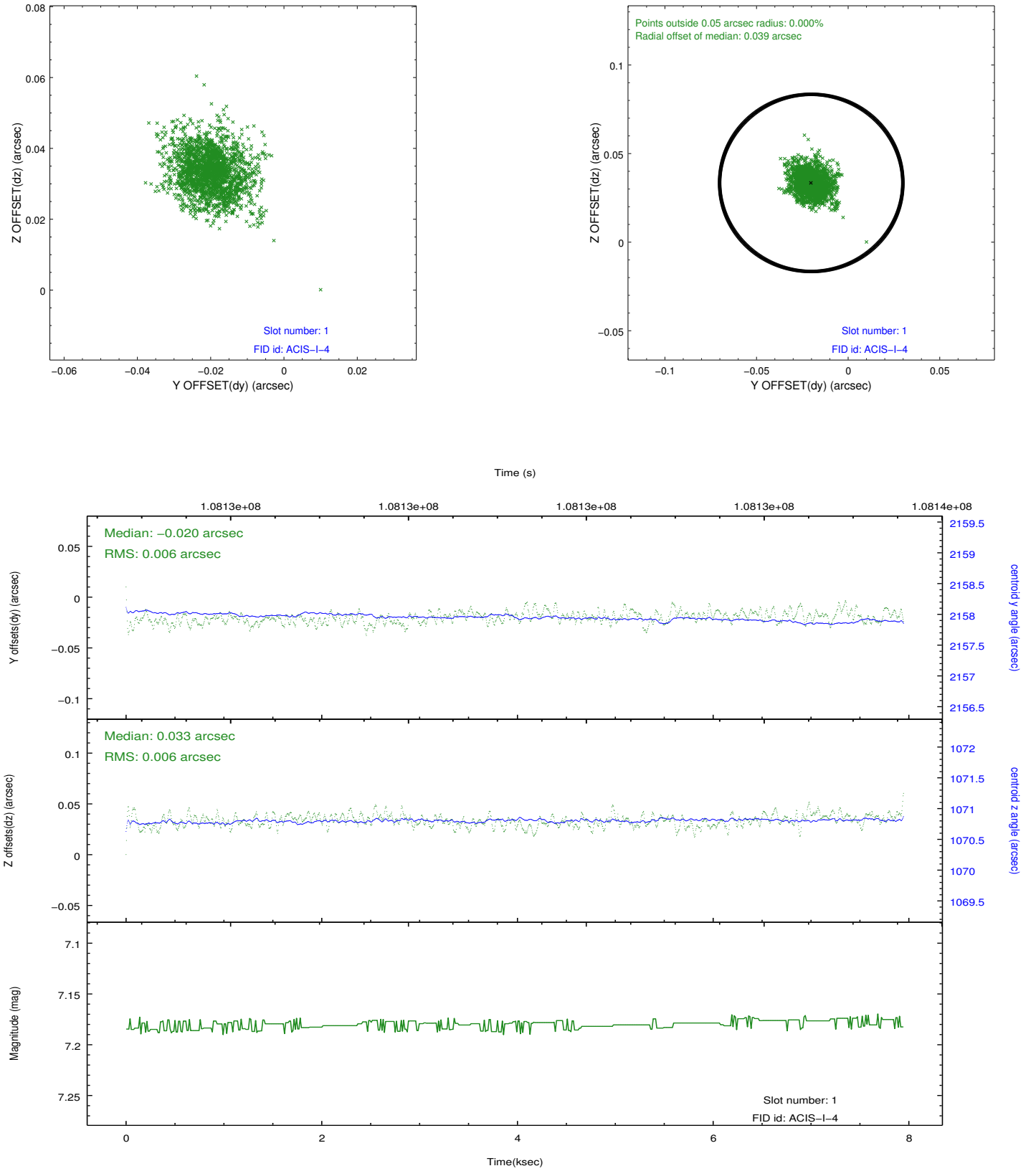


2.5 FID Slots

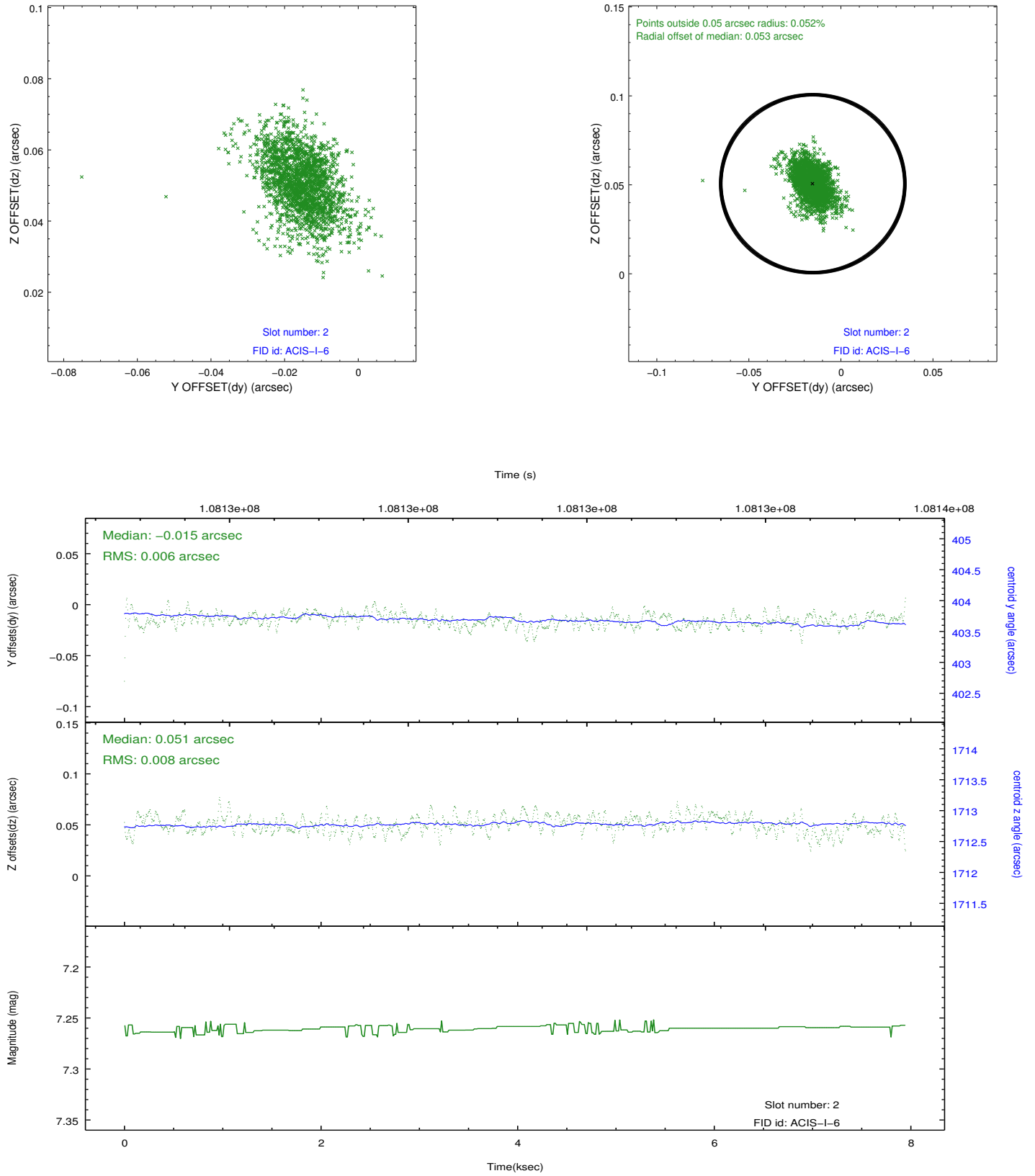
2.5.1 Slot 0



2.5.2 Slot 1



2.5.3 Slot 2



A Summary

A.1 Status

V&V Scientist	Jen Lauer
V&V Date (YYYY-MM-DD)	2012.09.20
V&V Edition	1
V&V Disposition and Status	OK
V&V Charge Time	7.507

A.2 Comments

Window constraint met.