

# V&V Reference Report

## L2 ASCDS Version : 8.4.4

Observation 14225 - L2 Version 1  
Chandra X-Ray Center

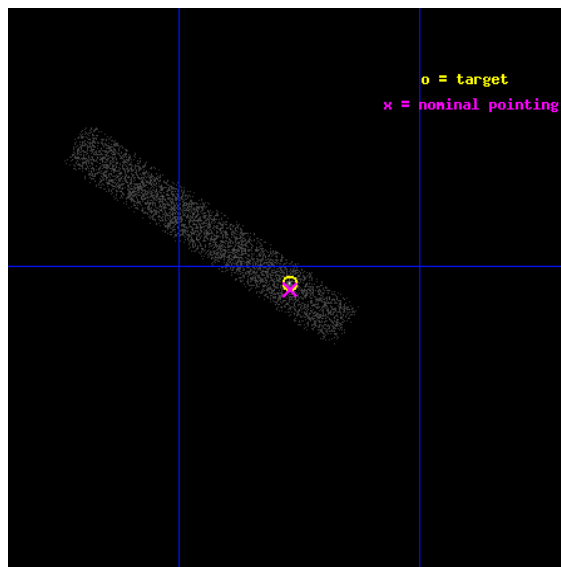
L2 Processing Date : May 21 2012

## Contents

<b>1</b>	<b>Front</b>	<b>2</b>
<b>2</b>	<b>OBI</b>	<b>3</b>
2.1	OBI . . . . .	3
2.1.1	Images . . . . .	3
2.1.2	Bias . . . . .	3
2.1.3	Parameters . . . . .	4
2.1.4	Events . . . . .	4
2.2	Compared Parameters . . . . .	5
2.3	Aspect . . . . .	6
2.4	Star Slots . . . . .	9
2.4.1	Slot 3 . . . . .	9
2.4.2	Slot 4 . . . . .	10
2.4.3	Slot 5 . . . . .	11
2.4.4	Slot 6 . . . . .	12
2.4.5	Slot 7 . . . . .	13
2.5	FID Slots . . . . .	14
2.5.1	Slot 0 . . . . .	14
2.5.2	Slot 1 . . . . .	15
2.5.3	Slot 2 . . . . .	16
<b>A</b>	<b>Summary</b>	<b>17</b>
A.1	Status . . . . .	17
A.2	Comments . . . . .	17

# 1 Front

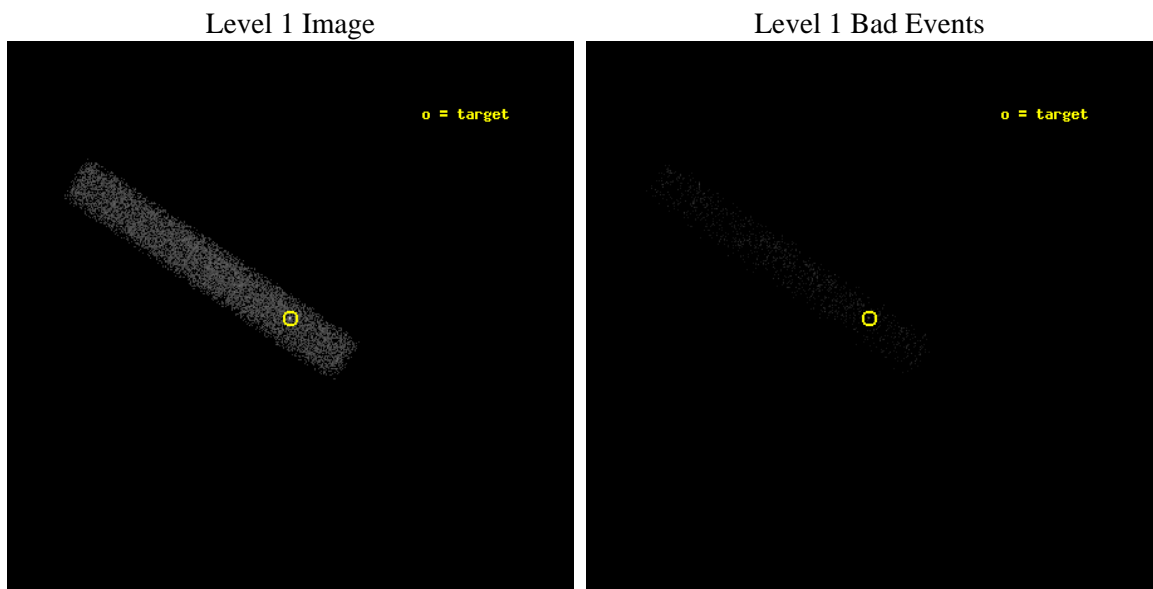
seq_num	401421	Sequence number
obs_id	14225	Observation id
title	Crust cooling of accretion heated neutron stars	Proposal title
observer	Dr. Rudy Wijnands	Principal investigator
object	MAXI J0556-332	Source name
dtcycle	0	&#160
cycle	P	events from which exps? Prim/Second/Both
ra_targ	89.1925	Observer's specified target RA [deg]
dec_targ	-33.173972	Observer's specified target Dec [deg]
ra_nom	89.192554080012	Nominal RA [deg]
dec_nom	-33.177016679412	Nominal Dec [deg]
roll_nom	213.83384443878	Nominal Roll [deg]
revision	1	Processing version of data
ontime	10103.199397802	Sum of GTIs [s]
livetime	9163.0685632164	Livetime [s]
ontime7	10103.199397802	Sum of GTIs [s]
l2events	6424	Number of level 2 events



## 2 OBI

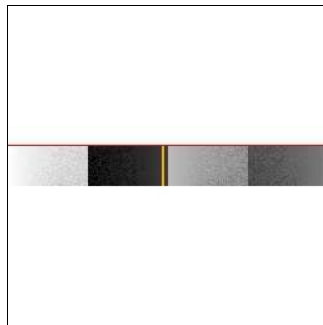
### 2.1 OBI

#### 2.1.1 Images



#### 2.1.2 Bias

Chip 7



### 2.1.3 Parameters

obi_num	1	Obi number	sched_exp_time	10033.666000	[s] Scheduled observation exposure time
ascdsver	8.4.4	Processing system revision	ontime	10103.199397802	Sum of GTIs [s]
caldsver	4.4.9	&#160	ontime7	10103.199397802	Sum of GTIs [s]
date	2012-05-21T22:56:42	Date and time of file creation	l1events	12078	Number of level 1 events
revision	1	Processing version of data			

### 2.1.4 Events

	<b>ccd 7</b>
level 1 events	12078
rejected events	5399
rejected %	44%

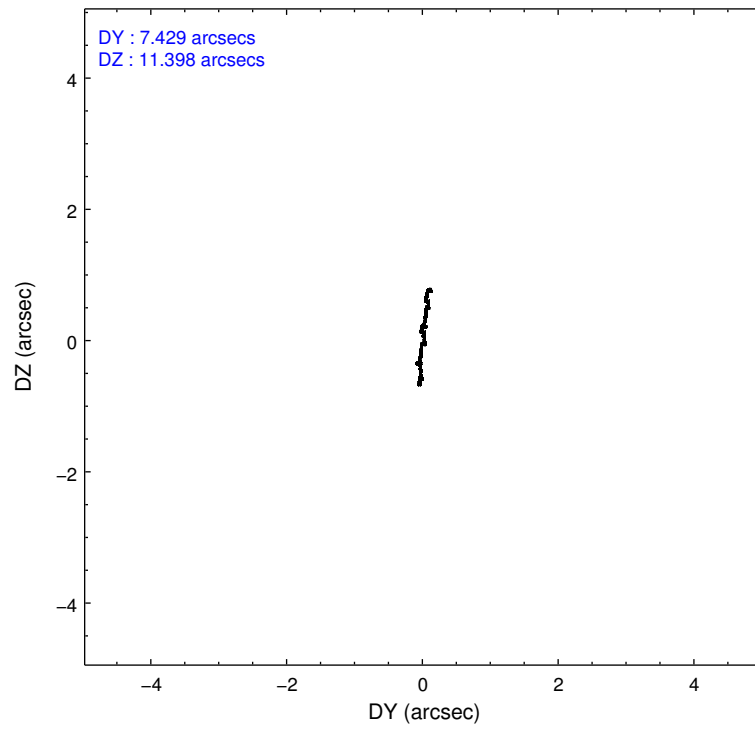
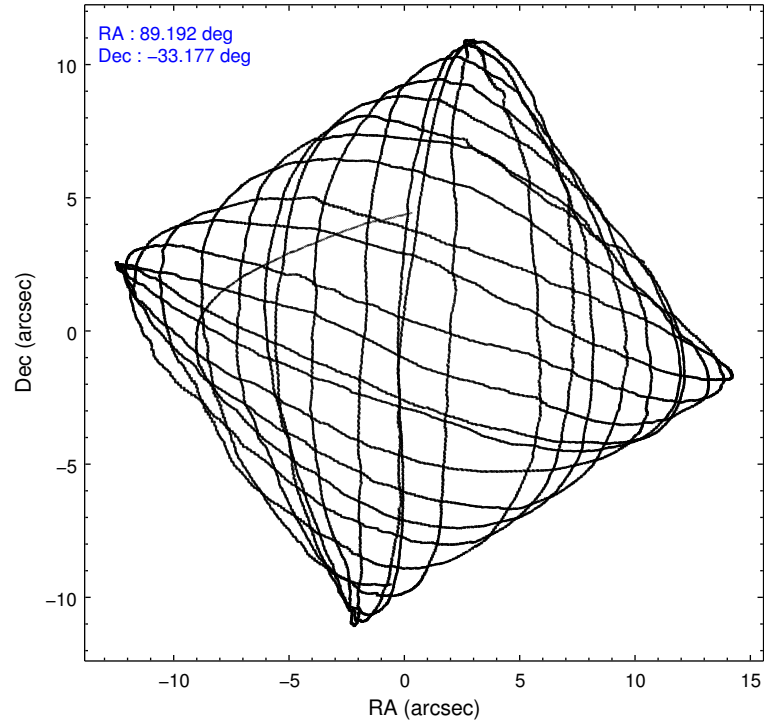
	<b>ccd 7</b>
grade 0 events	983
	8%
grade 1 events	5
	0%
grade 2 events	1329
	11%
grade 3 events	920
	7%
grade 4 events	824
	6%
grade 5 events	1075
	8%
grade 6 events	2625
	21%
grade 7 events	4317
	35%

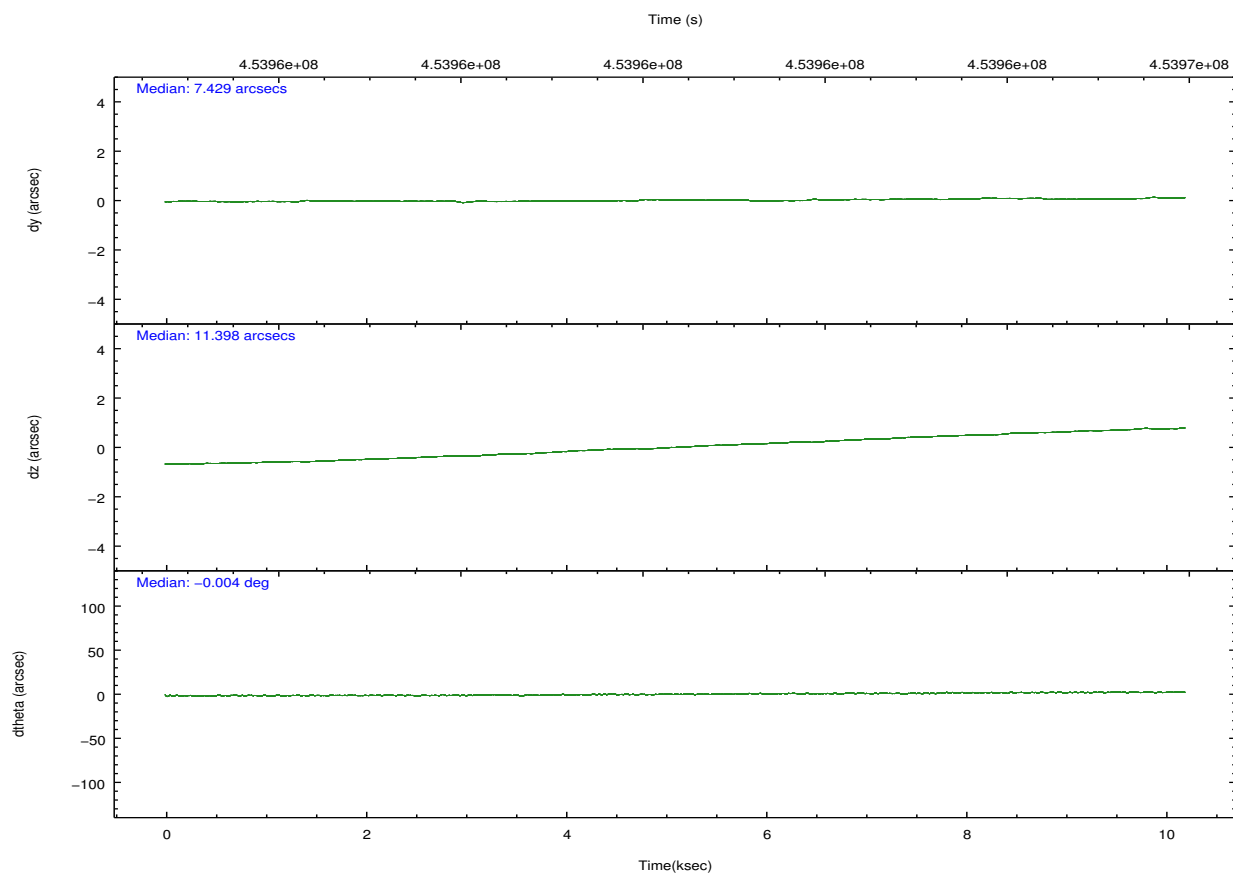
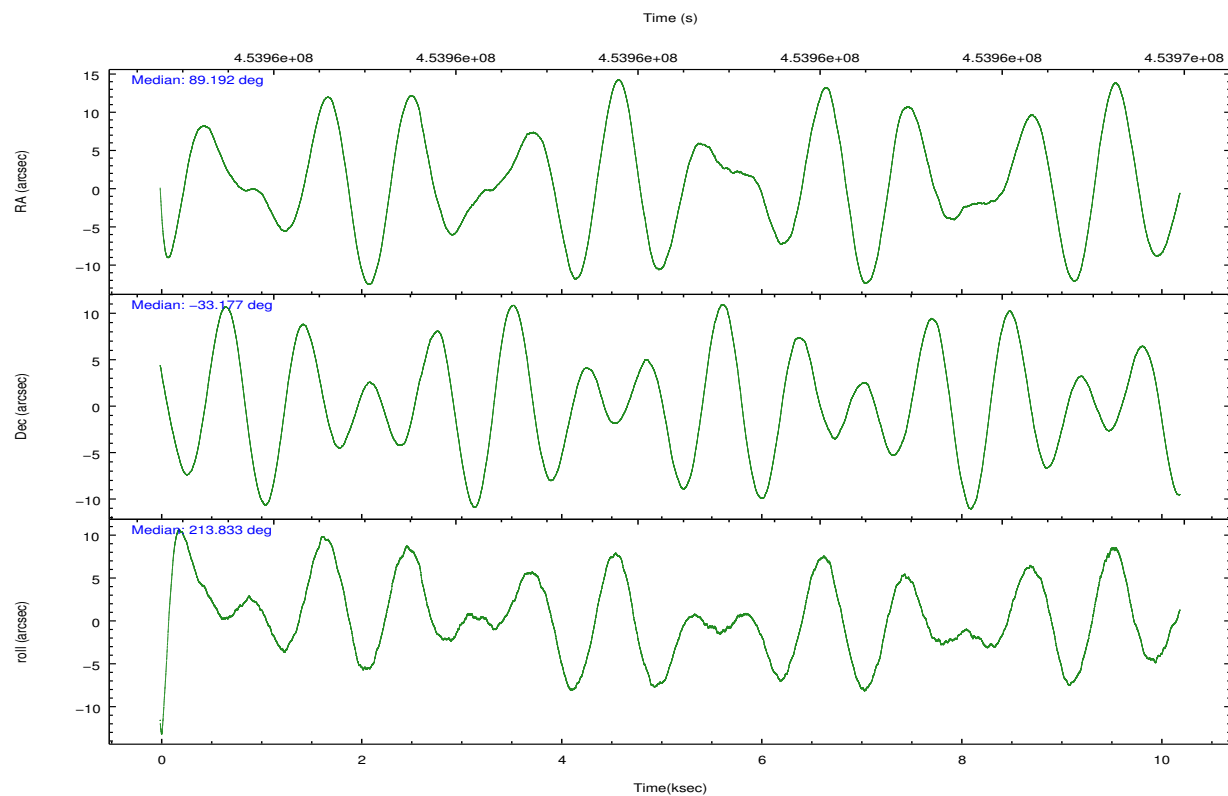


## 2.2 Compared Parameters

Parameter	Planned	Actual	Parameter	Planned	Actual
Instrument	ACIS	ACIS	Obspar format version number	7	7
Detector	ACIS-7	ACIS-7	Obspar file type	PREDICTED	ACTUAL
Grating	NONE	NONE	Obspar update status	NONE	UPDATED
Data mode	FAINT	FAINT	Number of optional ACIS chips dropped	0	0
Observation mode	POINTING	POINTING	On-chip summing requested	N	N
[deg] Pointing RA	89.206590	89.19255408001248	Subarray requested	CUSTOM	1/8
[deg] Pointing Dec	-33.152294	-33.17701667941151	Subarray start row	449	449
[deg] Pointing Roll	213.684927	213.8338444387835	Subarray row count	128	128
[mm] SIM focus pos	-0.684267	-0.6828225247311905	Alternating exposures requested	N	N
[mm] SIM defocus	0	0.001444936568705701	[s] Primary exposure time	0.000000	0.4
[mm] SIM translation stage pos	-190.132523	-190.1400660498719			
[mm] SIM translation stage offset	0	0.00754346686406393			
[s] Observation start time (MET)	453955410.184000	453954252.15435			
Observation start date	2012-05-21T02:42:24	2012-05-21T02:24:12			
[s] Observation end time (MET)	453965444.184000	453965670.14246			
Observation end date	2012-05-21T05:29:38	2012-05-21T05:34:30			
Read mode	TIMED	TIMED			

## 2.3 Aspect



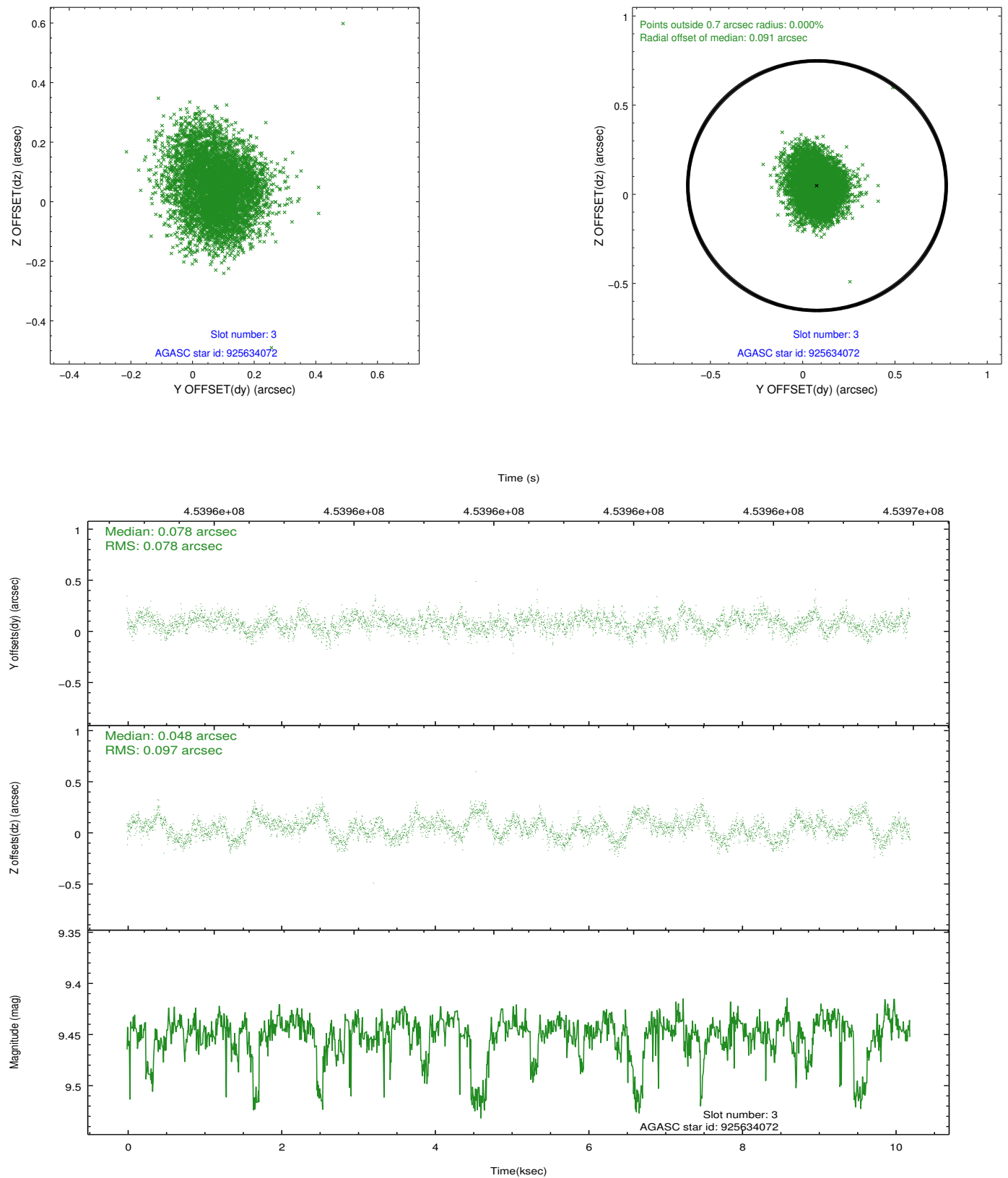


### Slot Statistics

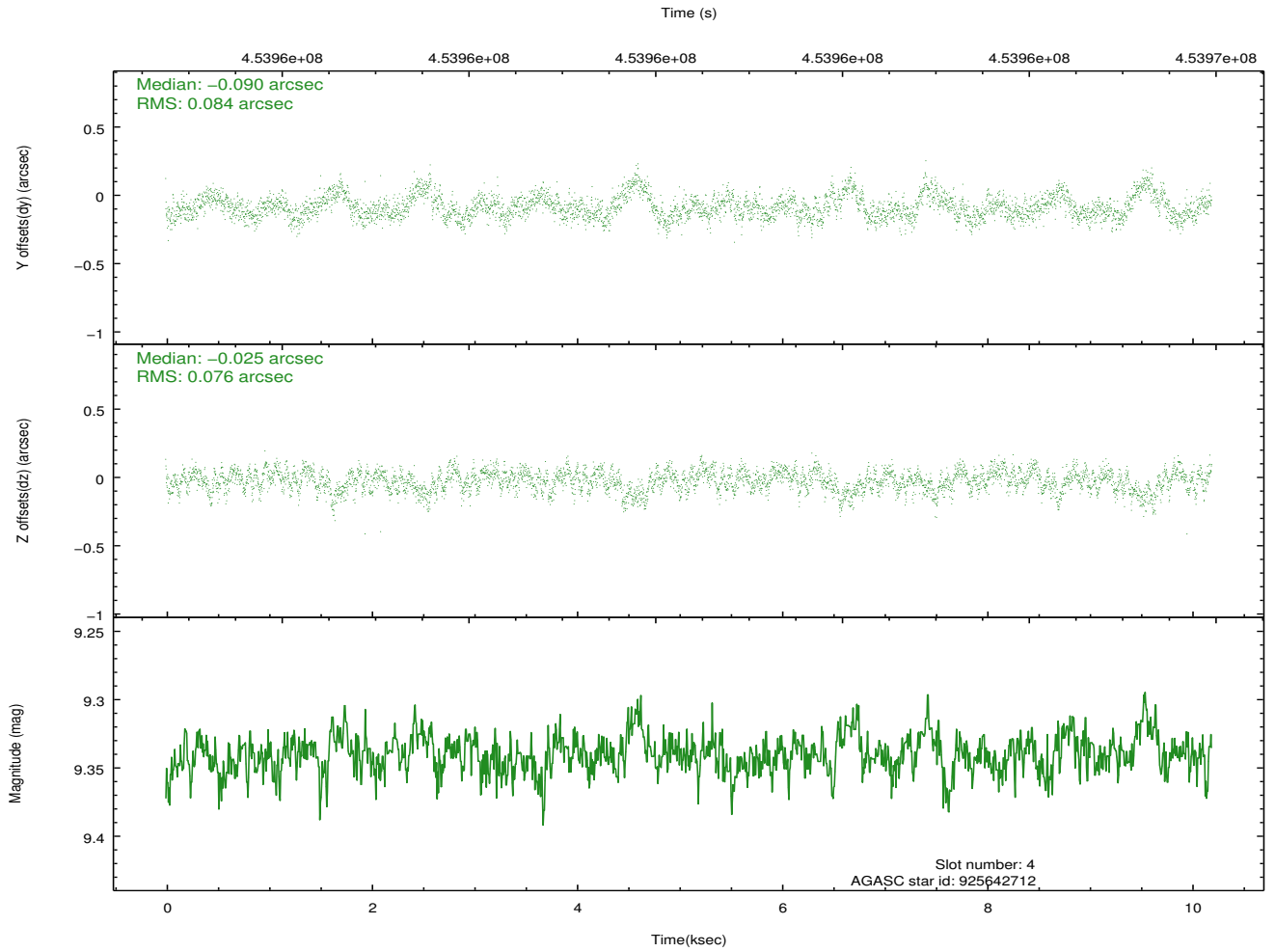
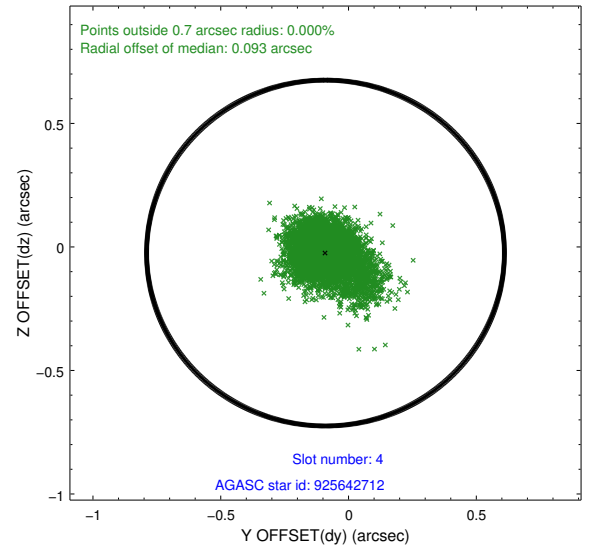
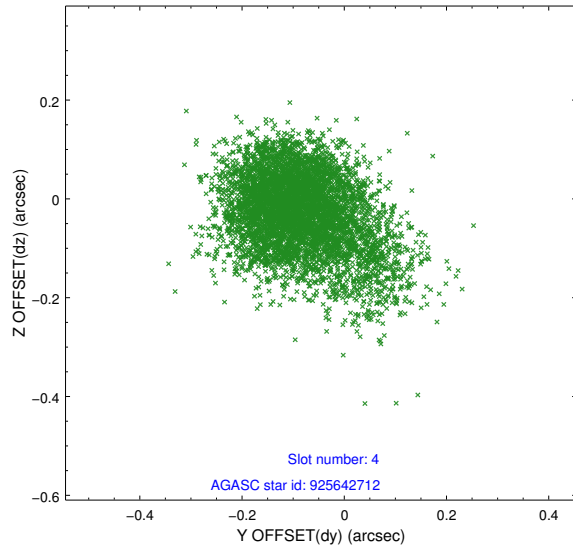
slot	status	id	mag	n_pts	med_dy	med_dz	dr1	dr2	ra	dec	mean_y	mean_z
0	FID	ACIS-S-2	7.03	2487	-0.062	-0.032	0.016	0.025	0.000000	0.000000	-760.26	-1732.73
1	FID	ACIS-S-4	7.12	2487	0.186	0.038	0.011	0.018	0.000000	0.000000	2153.02	175.30
2	FID	ACIS-S-5	7.15	2486	-0.155	0.001	0.014	0.022	0.000000	0.000000	-1812.54	169.50
3	GUIDE	925634072	9.45	4967	0.078	0.048	0.133	0.210	89.639500	-32.781209	-1829.57	-382.53
4	GUIDE	925642712	9.34	4970	-0.090	-0.025	0.115	0.202	89.246145	-33.485552	566.45	1064.34
5	GUIDE	925642880	7.73	4975	0.026	-0.067	0.079	0.129	89.133148	-33.434507	747.16	723.26
6	GUIDE	925643520	9.24	4964	0.098	0.027	0.088	0.145	88.970468	-33.727415	1737.97	1332.17
7	GUIDE	925645552	7.59	4974	-0.118	0.018	0.065	0.109	88.738097	-33.665766	2195.31	762.69

## 2.4 Star Slots

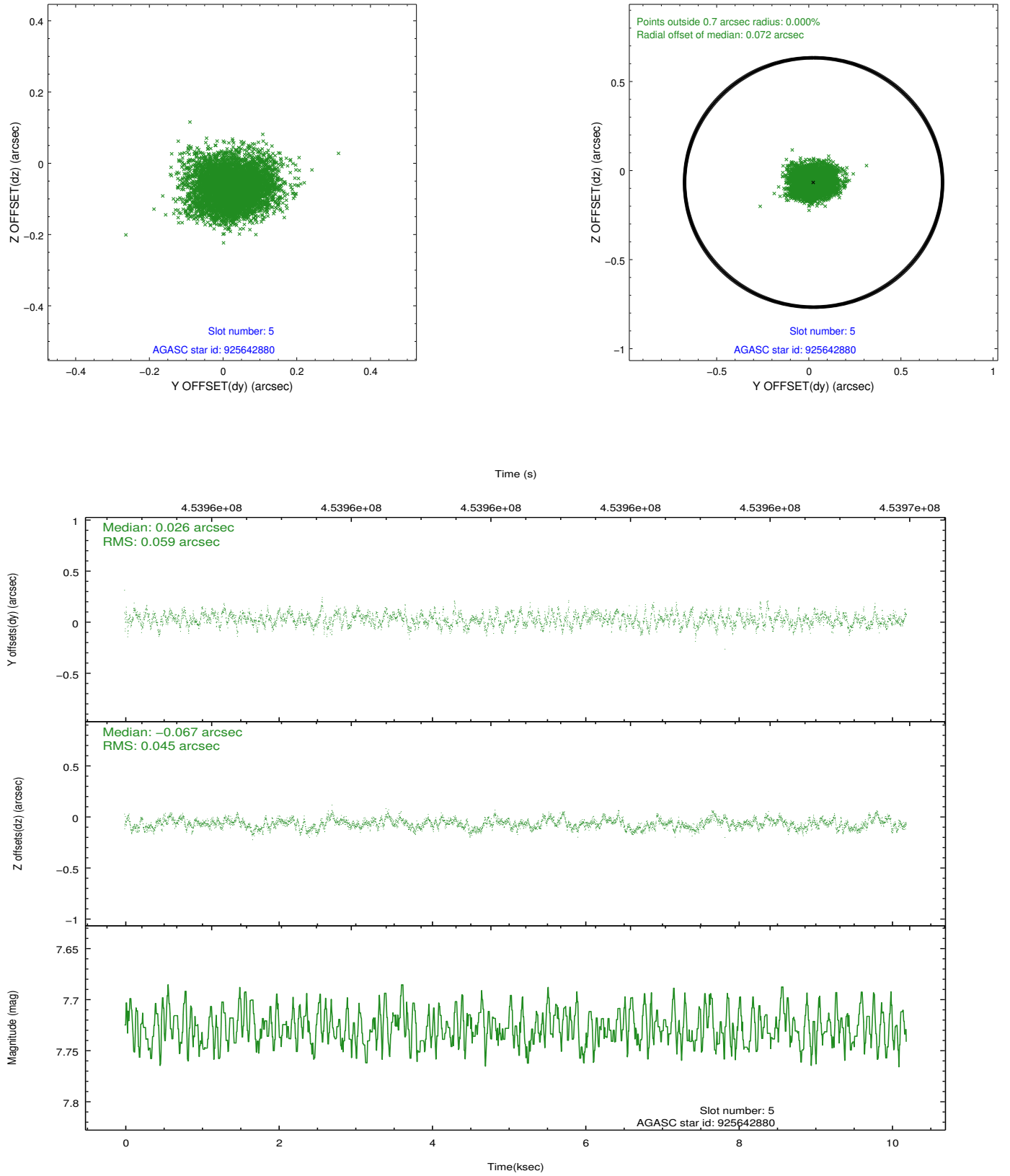
### 2.4.1 Slot 3



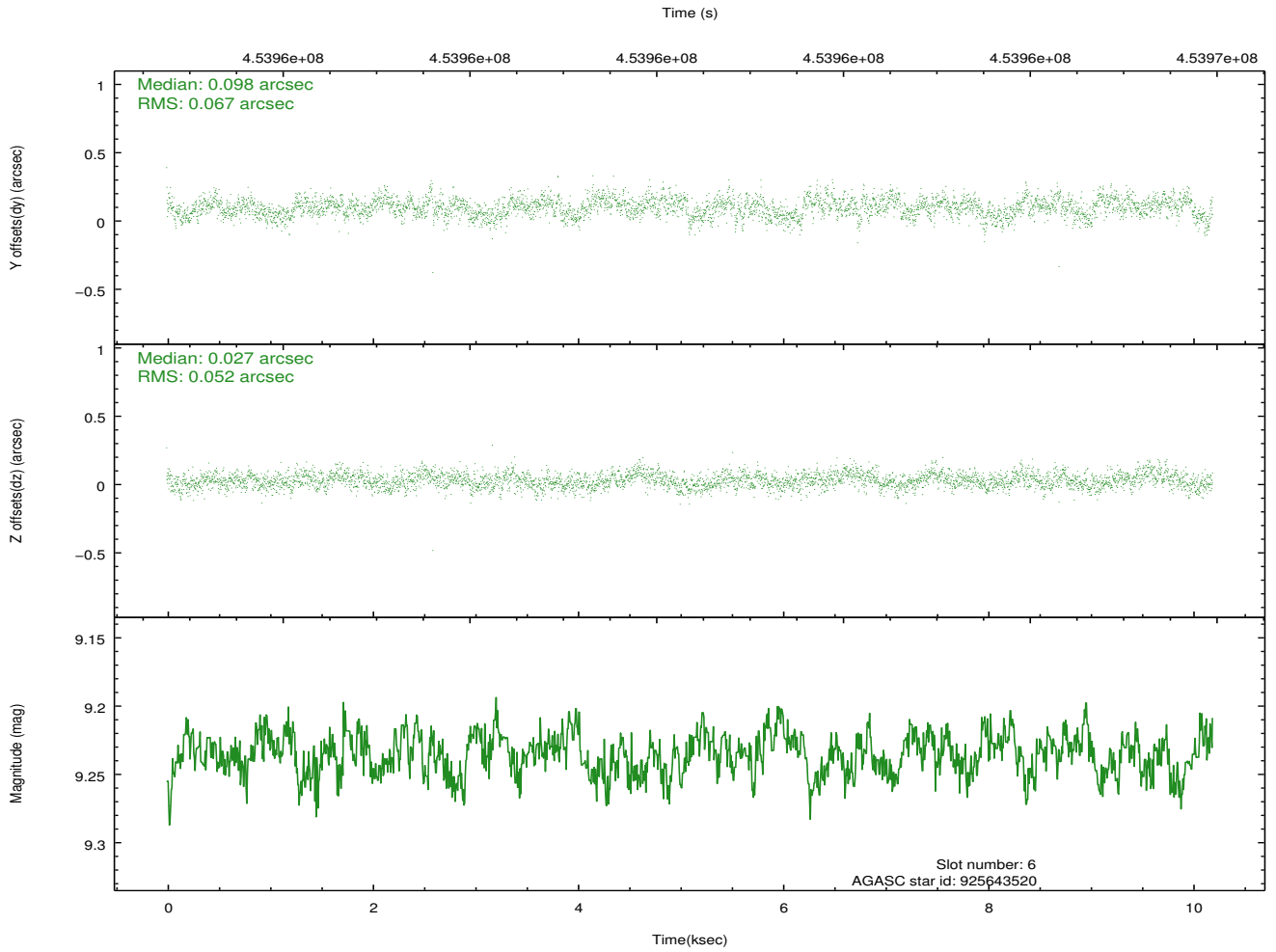
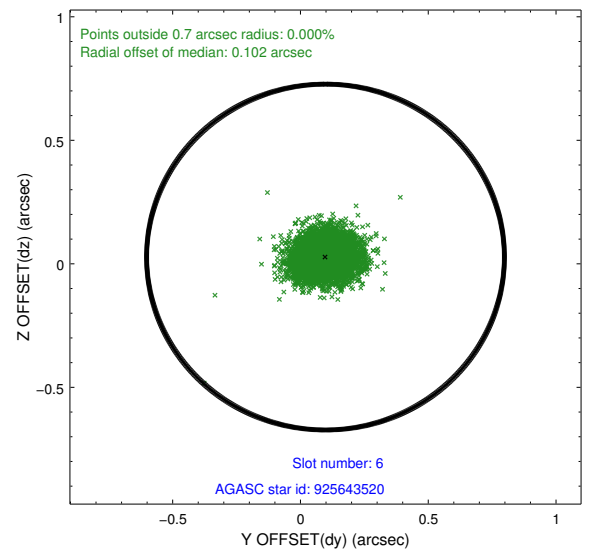
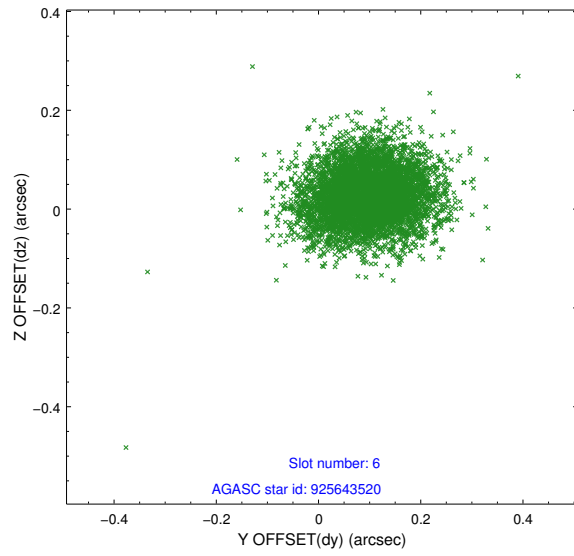
## 2.4.2 Slot 4



### 2.4.3 Slot 5

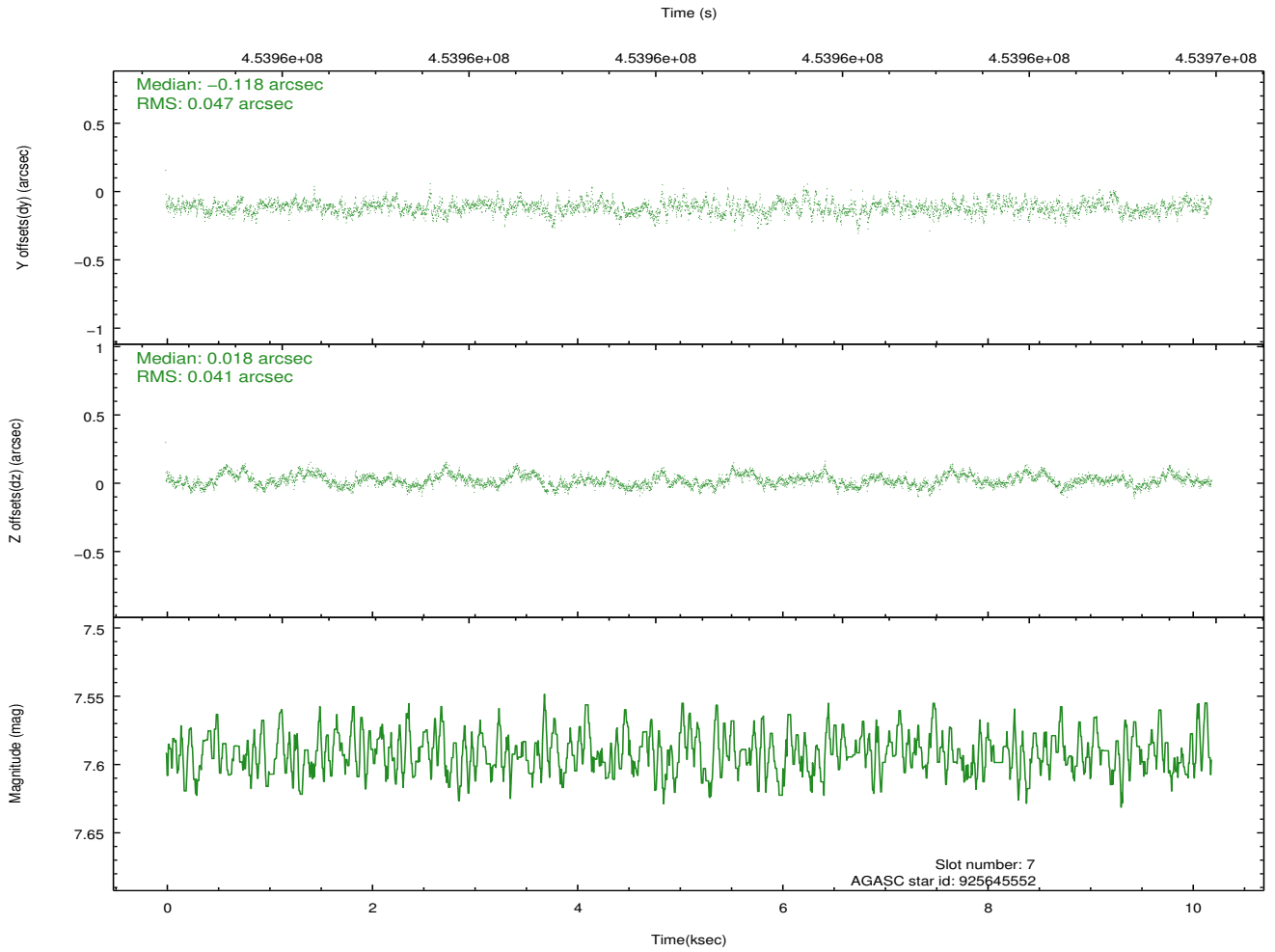
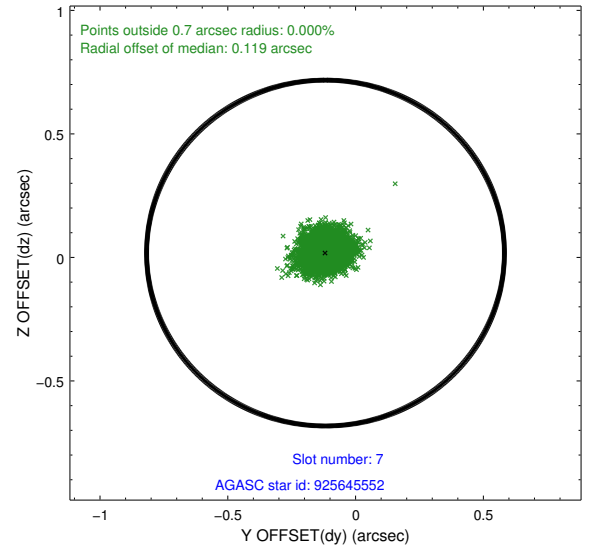
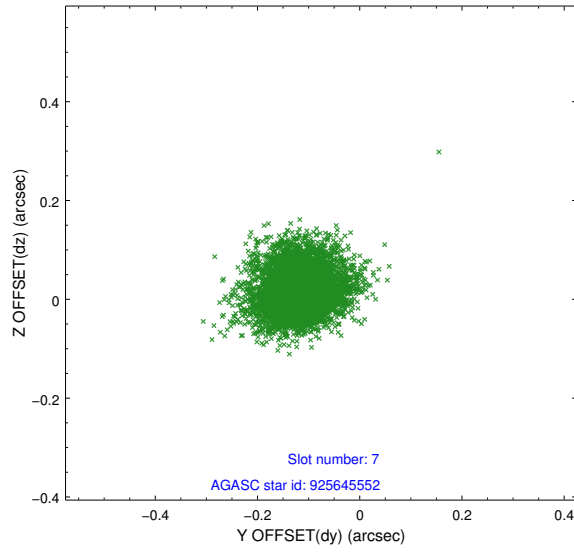


## 2.4.4 Slot 6



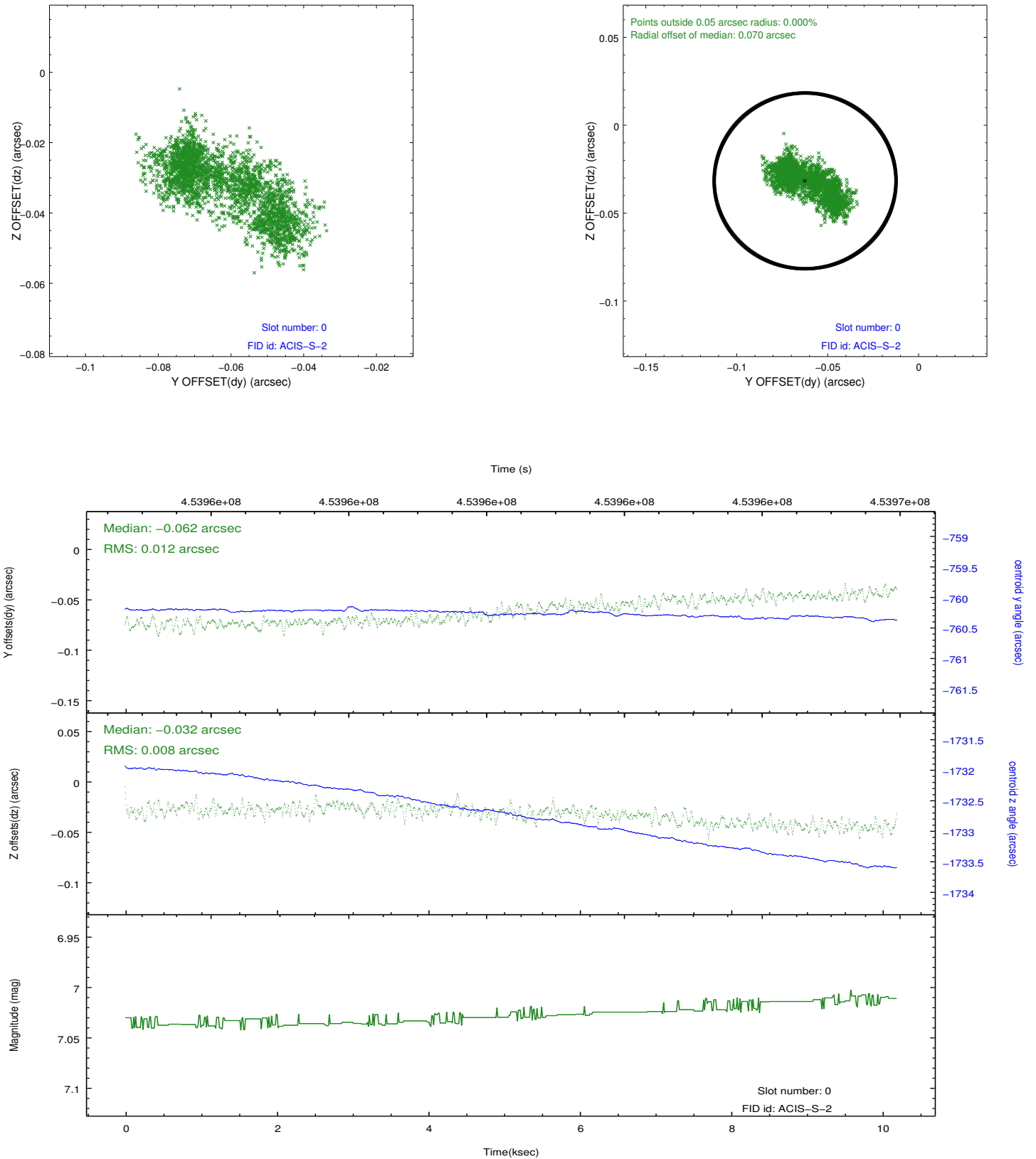


## 2.4.5 Slot 7

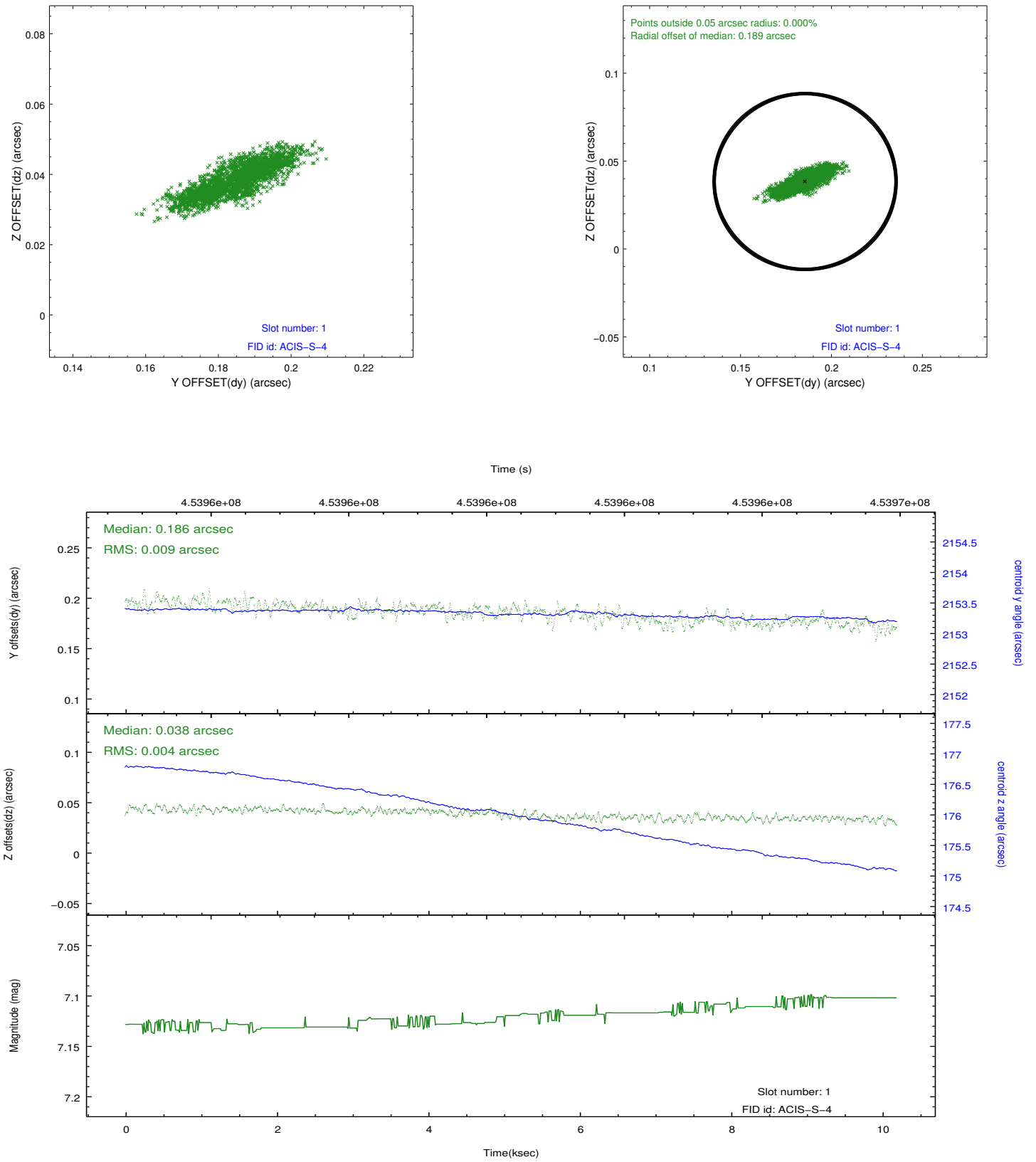


## 2.5 FID Slots

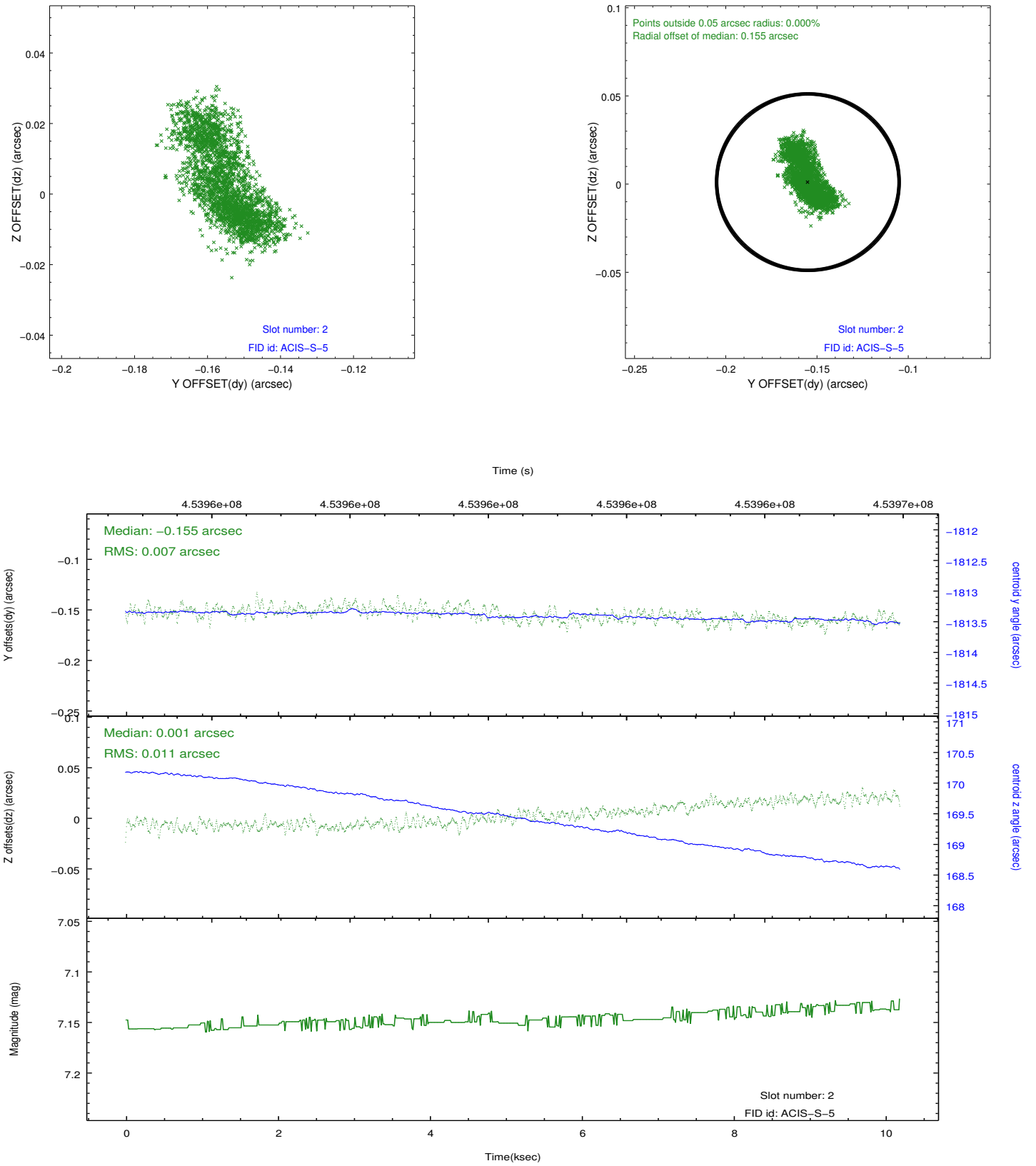
### 2.5.1 Slot 0



## 2.5.2 Slot 1



### 2.5.3 Slot 2



## A Summary

### A.1 Status

V&V Scientist	Joy Nichols
V&V Date (YYYY-MM-DD)	2012.05.22
V&V Edition	1
V&V Disposition and Status	OK
V&V Charge Time	10.103199397802

### A.2 Comments