

V&V Reference Report

L2 ASCDS Version : 8.4.5

Observation 13665 - L2 Version 2
Chandra X-Ray Center

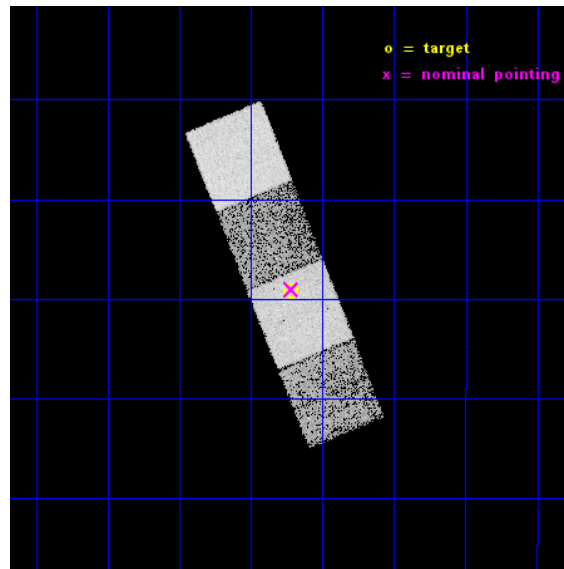
L2 Processing Date : Nov 29 2014

Contents

1	Front	2
2	OBI	3
2.1	OBI	3
2.1.1	Images	3
2.1.2	Bias	3
2.1.3	Parameters	4
2.1.4	Events	4
2.2	Compared Parameters	5
2.3	Aspect	6
2.4	Star Slots	9
2.4.1	Slot 3	9
2.4.2	Slot 4	10
2.4.3	Slot 5	11
2.4.4	Slot 6	12
2.4.5	Slot 7	13
2.5	FID Slots	14
2.5.1	Slot 0	14
2.5.2	Slot 1	15
2.5.3	Slot 2	16
A	Summary	17
A.1	Status	17
A.2	Comments	17

1 Front

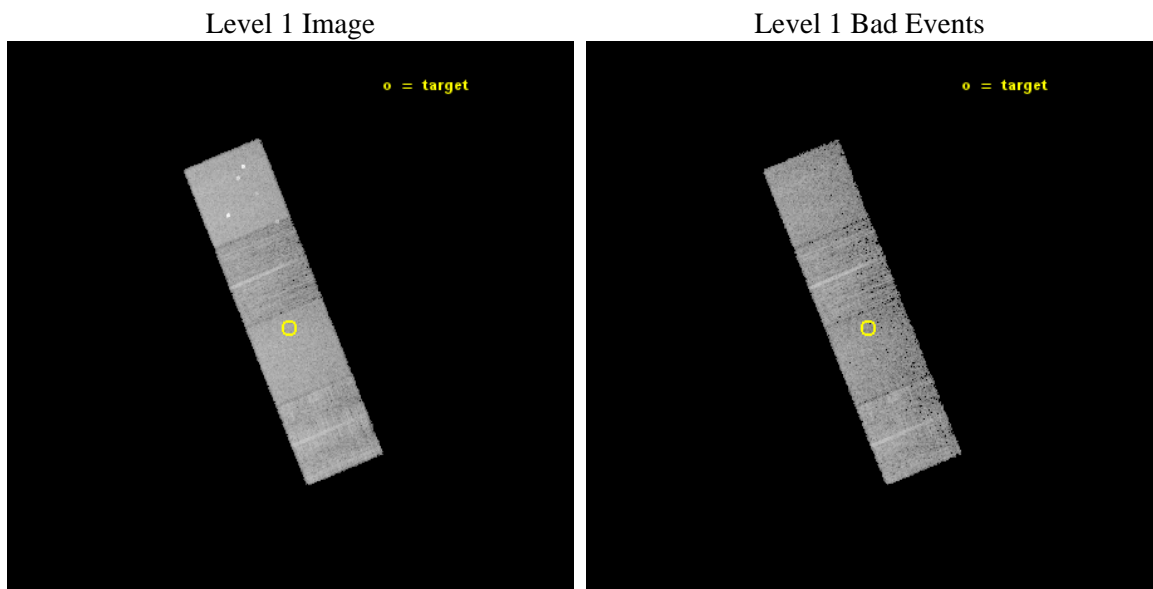
seq_num	200815	Sequence number
obs_id	13665	Observation id
title	Testing Star-Planet Interaction in Solar Analogs	Proposal title
observer	Brendan Miller	Principal investigator
object	HD 107148	Source name
dtcycle	0	
cycle	P	events from which exps? Prim/Second/Both
ra_targ	184.80625	Observer's specified target RA [deg]
dec_targ	-3.319778	Observer's specified target Dec [deg]
ra_nom	184.804496886	Nominal RA [deg]
dec_nom	-3.3172964253722	Nominal Dec [deg]
roll_nom	67.775227322287	Nominal Roll [deg]
revision	2	Processing version of data
ontime	9678.2000744343	Sum of GTIs [s]
livetime	9551.7472654746	Livetime [s]
ontime5	9678.2000744343	Sum of GTIs [s]
ontime6	9678.2000744343	Sum of GTIs [s]
ontime7	9678.2000744343	Sum of GTIs [s]
ontime8	9678.2000744343	Sum of GTIs [s]
l2events	83793	Number of level 2 events



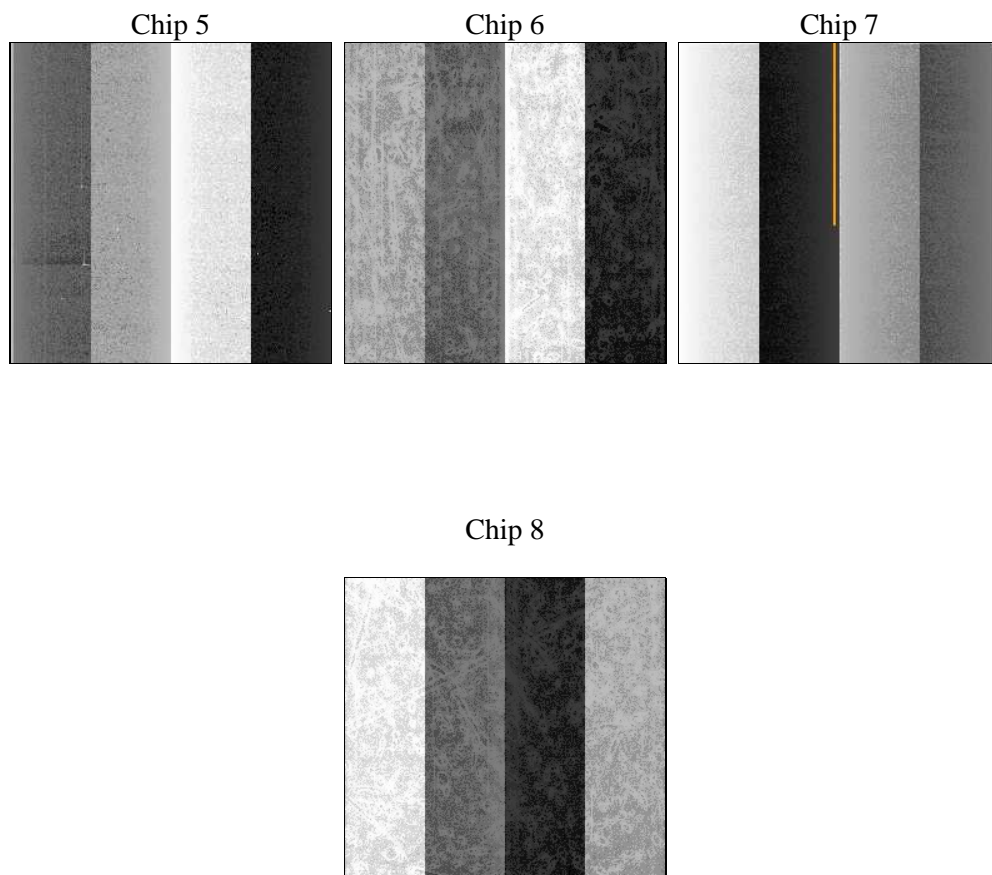
2 OBI

2.1 OBI

2.1.1 Images



2.1.2 Bias



2.1.3 Parameters

obi_num	1	Obi number	sched_exp_time	9608.462000	[s] Scheduled observation exposure time
ascdsver	10.3	Processing system revision	ontime	9678.2000744343	Sum of GTIs [s]
caldsver	4.6.4	 	ontime5	9678.2000744343	Sum of GTIs [s]
date	2014-11-29T14:29:16	Date and time of file creation	ontime6	9678.2000744343	Sum of GTIs [s]
revision	2	Processing version of data	ontime7	9678.2000744343	Sum of GTIs [s]
			ontime8	9678.2000744343	Sum of GTIs [s]
			l1events	277978	Number of level 1 events

2.1.4 Events

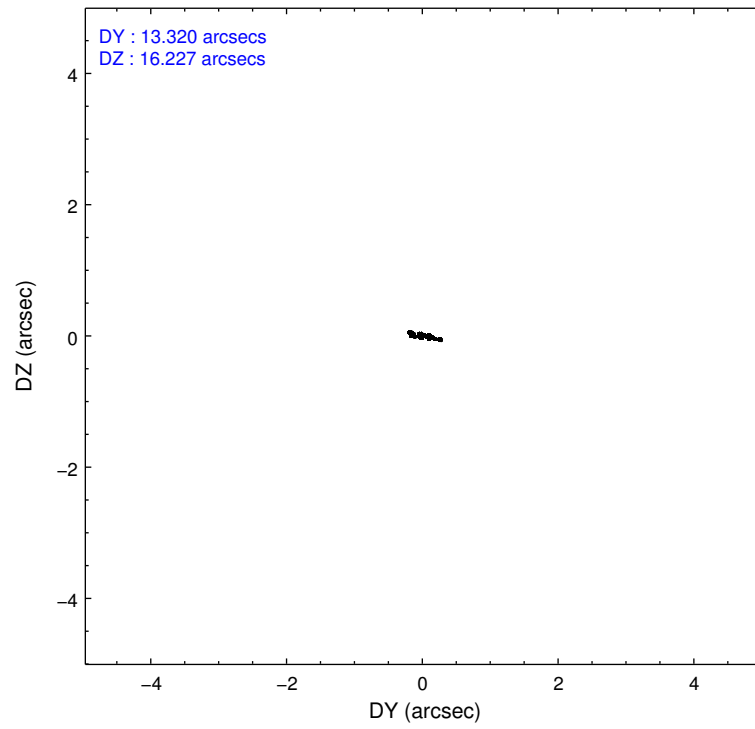
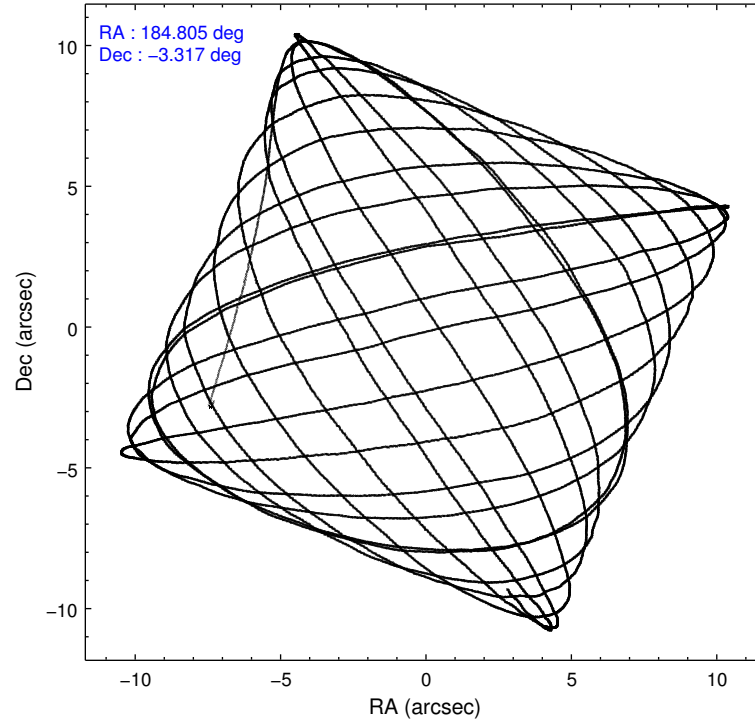
	ccd 5	ccd 6	ccd 7	ccd 8
level 1 events	87299	51361	69906	69412
rejected events	42693	44355	38045	50099
rejected %	48%	86%	54%	72%

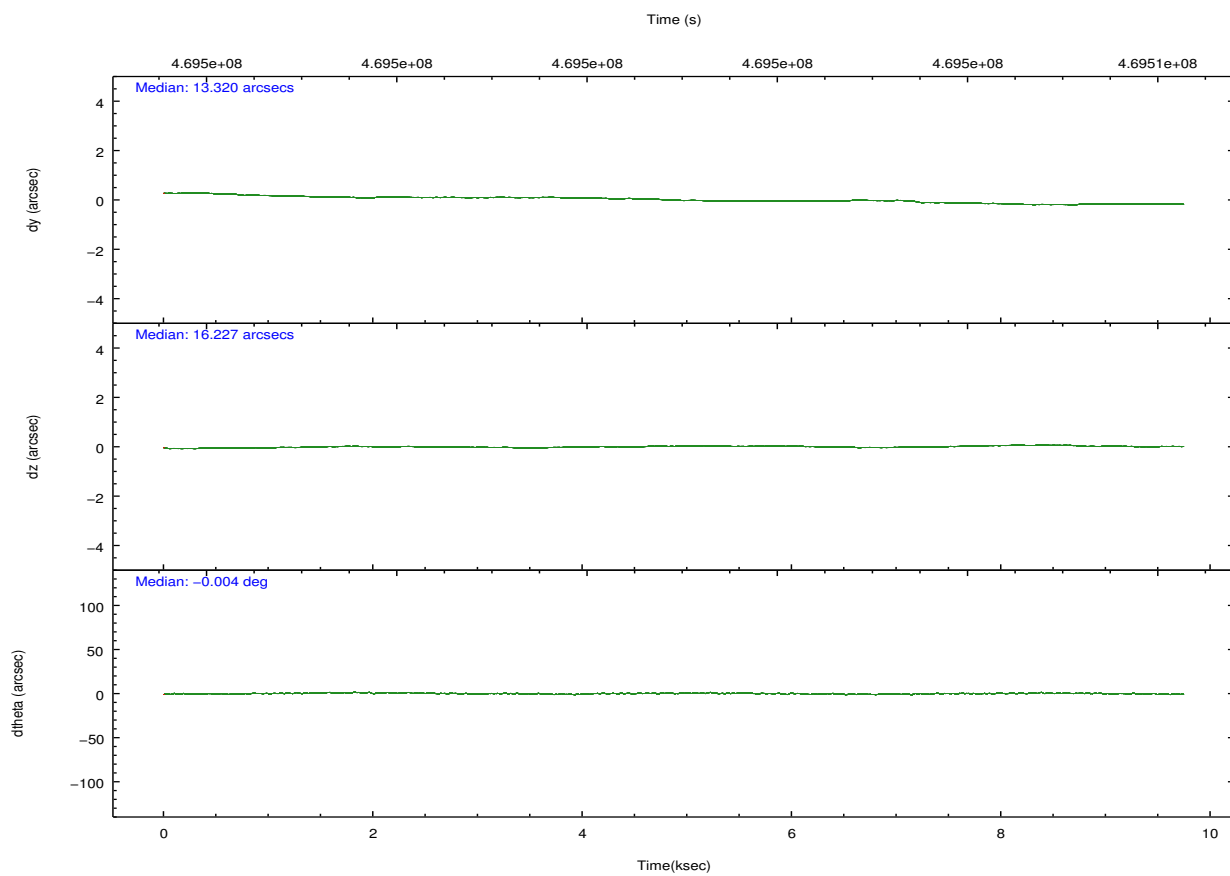
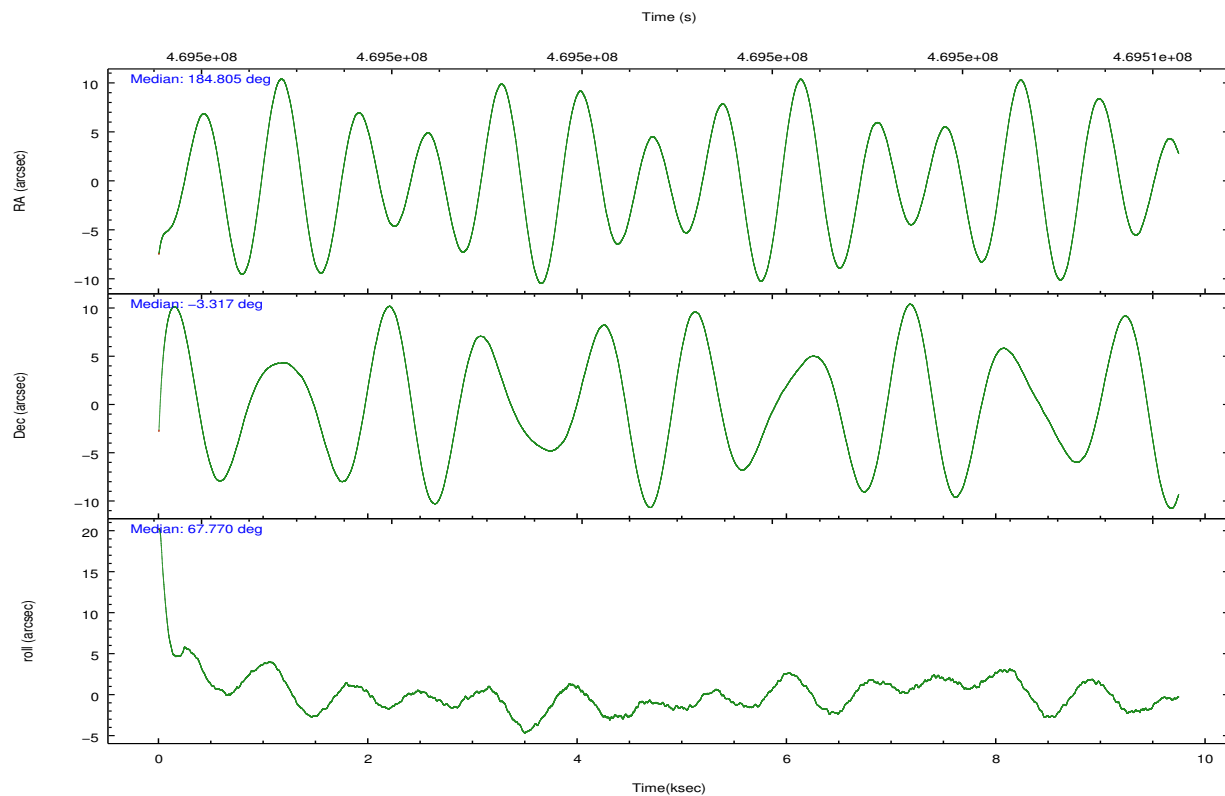
	ccd 5	ccd 6	ccd 7	ccd 8
grade 0 events	6876	2748	3105	6046
	7%	5%	4%	8%
grade 1 events	196	26	86	42
	0%	0%	0%	0%
grade 2 events	12767	1484	6331	4508
	14%	2%	9%	6%
grade 3 events	1490	666	2772	1978
	1%	1%	3%	2%
grade 4 events	1526	597	2774	1817
	1%	1%	3%	2%
grade 5 events	6450	2635	7105	3699
	7%	5%	10%	5%
grade 6 events	21968	1521	16907	4972
	25%	2%	24%	7%
grade 7 events	36026	41684	30826	46350
	41%	81%	44%	66%

2.2 Compared Parameters

Parameter	Planned	Actual	Parameter	Planned	Actual
Instrument	ACIS	ACIS	Obspar format version number	7	7
Detector	ACIS-5678	ACIS-5678	Obspar file type	PREDICTED	ACTUAL
Grating	NONE	NONE	Obspar update status	NONE	UPDATED
Data mode	VFAINT	VFAINT	CCD I0 on	N	N
Observation mode	POINTING	POINTING	CCD I1 on	N	N
[deg] Pointing RA	184.808572	184.8044968859959	CCD I2 on	N	N
[deg] Pointing Dec	-3.344350	-3.317296425372198	CCD I3 on	N	N
[deg] Pointing Roll	67.618822	67.77522732228734	CCD S0 on	N	N
[mm] SIM focus pos	-0.684267	-0.6828225247311905	CCD S1 on	O1	Y
[mm] SIM defocus	0	0.001444936568705701	CCD S2 on	O2	Y
[mm] SIM translation stage pos	-190.132523	-190.1425803651734	CCD S3 on	Y	Y
[mm] SIM translation stage offset	0	0.01005778216563158	CCD S4 on	O3	Y
[s] Observation start time (MET)	469496171.184000	469494571.13182	CCD S5 on	N	N
Observation start date	2012-11-16T23:35:04	2012-11-16T23:09:31	Number of optional ACIS chips dropped	0	0
[s] Observation end time (MET)	469505780.184000	469506005.51994	On-chip summing requested	N	N
Observation end date	2012-11-17T02:15:13	2012-11-17T02:20:05	Subarray requested	NONE	NONE
Read mode	TIMED	TIMED	Alternating exposures requested	N	N
			[s] Primary exposure time	0.000000	3.1

2.3 Aspect



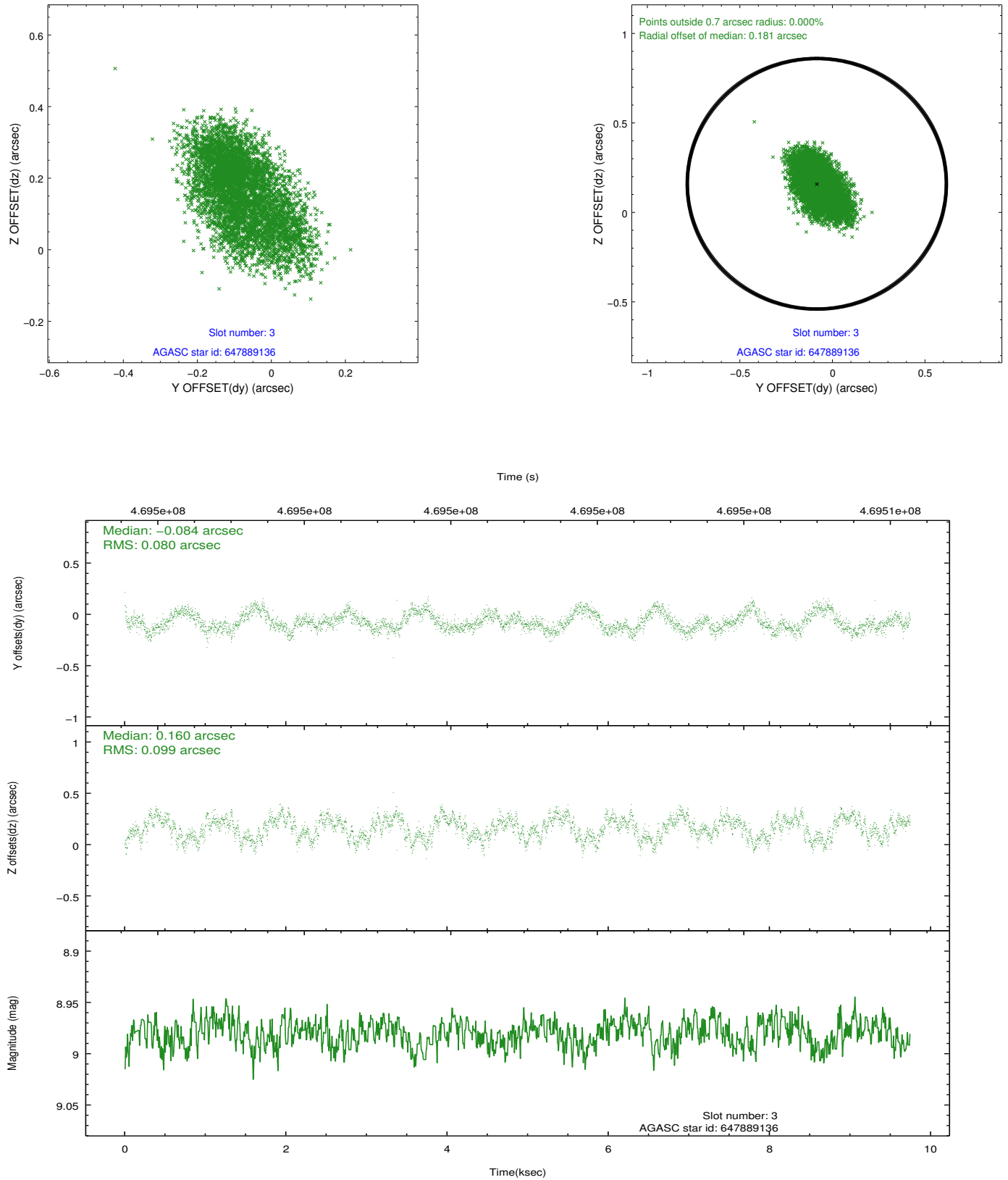


Slot Statistics

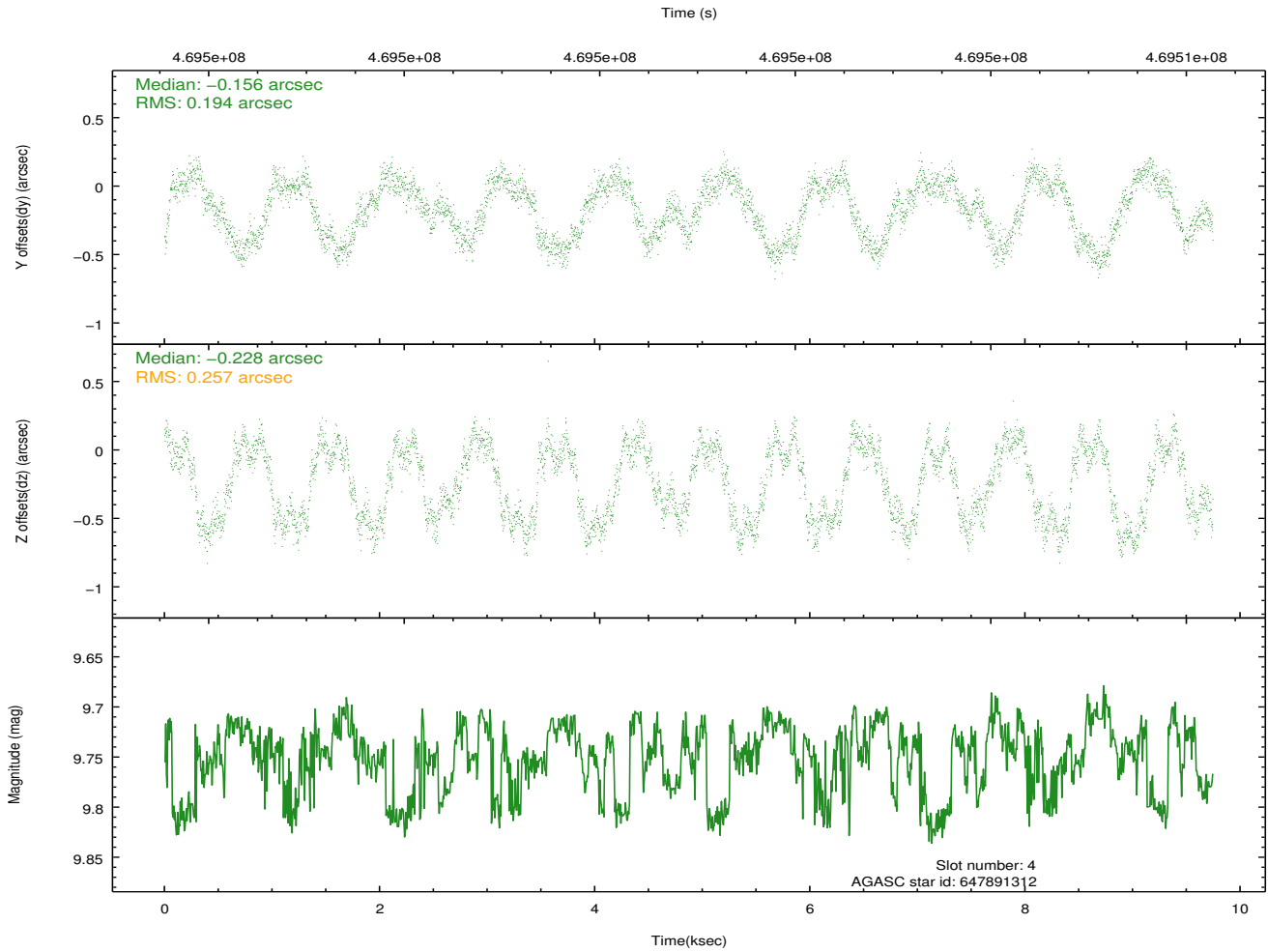
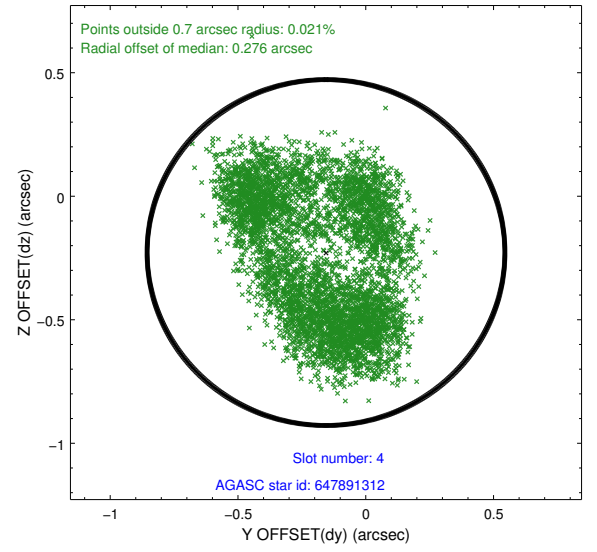
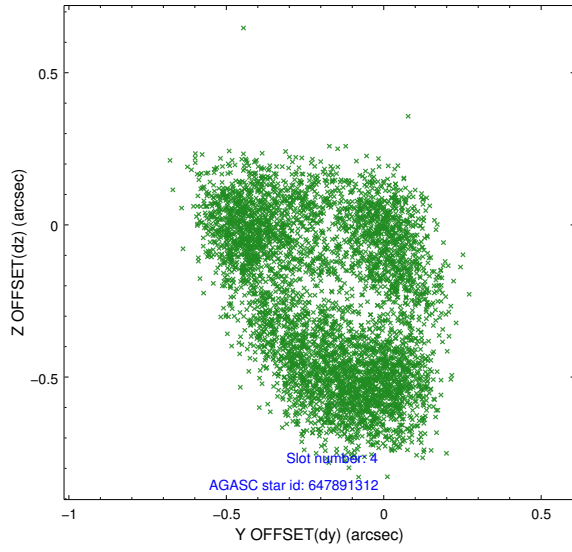
slot	status	used	id	mag	n_pts	med_dy	med_dz	dr1	dr2	ra	dec	mean_y	mean_z
0	FID		ACIS-S-2	6.96	2377	-0.055	-0.015	0.008	0.013	0.000000	0.000000	-766.30	-1737.60
1	FID		ACIS-S-4	7.05	2377	0.215	0.031	0.011	0.018	0.000000	0.000000	2146.98	170.37
2	FID		ACIS-S-5	7.08	2377	-0.191	-0.007	0.008	0.013	0.000000	0.000000	-1818.59	164.61
3	GUIDE	used	647889136	8.98	4753	-0.084	0.160	0.136	0.217	184.355556	-3.301408	-477.51	1564.55
4	GUIDE	used	647891312	9.75	4743	-0.156	-0.228	0.353	0.476	184.544951	-3.030823	682.25	1306.89
5	GUIDE	used	647891320	7.85	4753	-0.160	-0.149	0.075	0.121	184.643465	-3.022274	845.91	990.82
6	GUIDE	used	648028536	8.08	4753	0.197	0.393	0.123	0.177	185.163606	-3.995187	-1682.10	-2069.73
7	GUIDE	used	647894672	9.37	4717	0.228	-0.155	0.127	0.222	184.676485	-3.599838	-1031.31	88.50

2.4 Star Slots

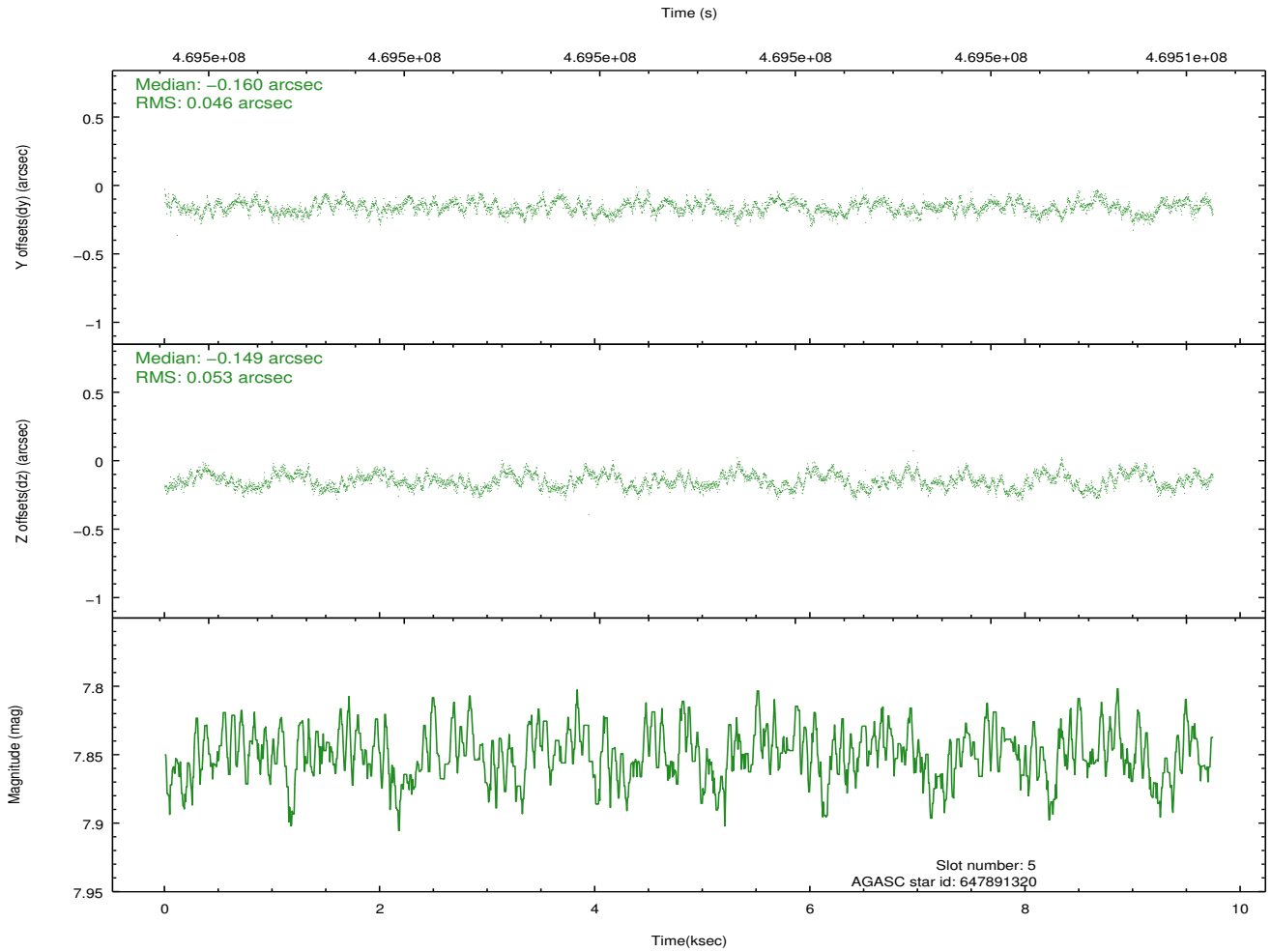
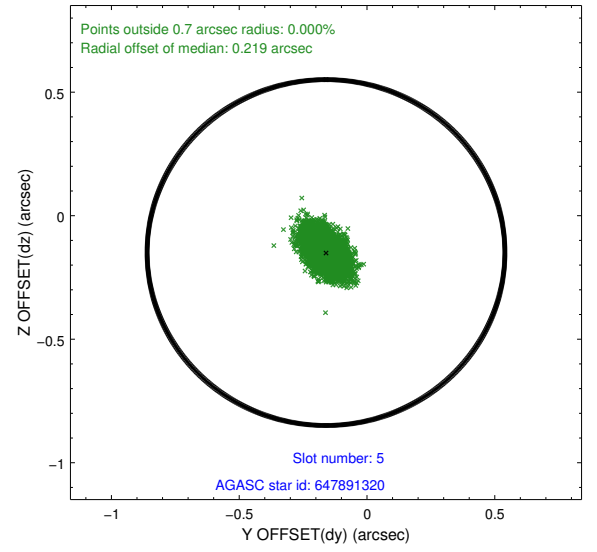
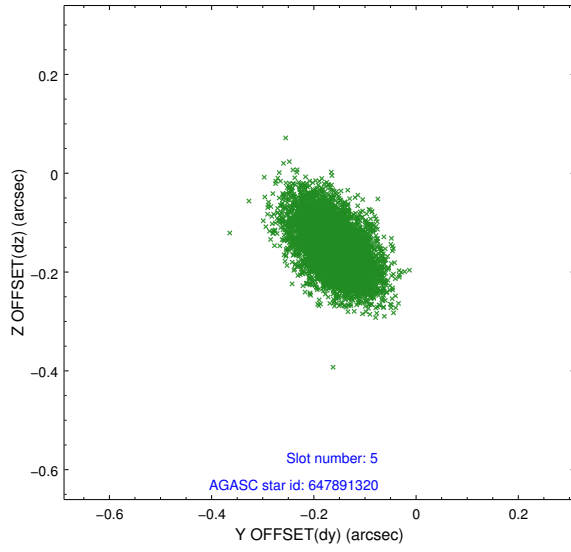
2.4.1 Slot 3



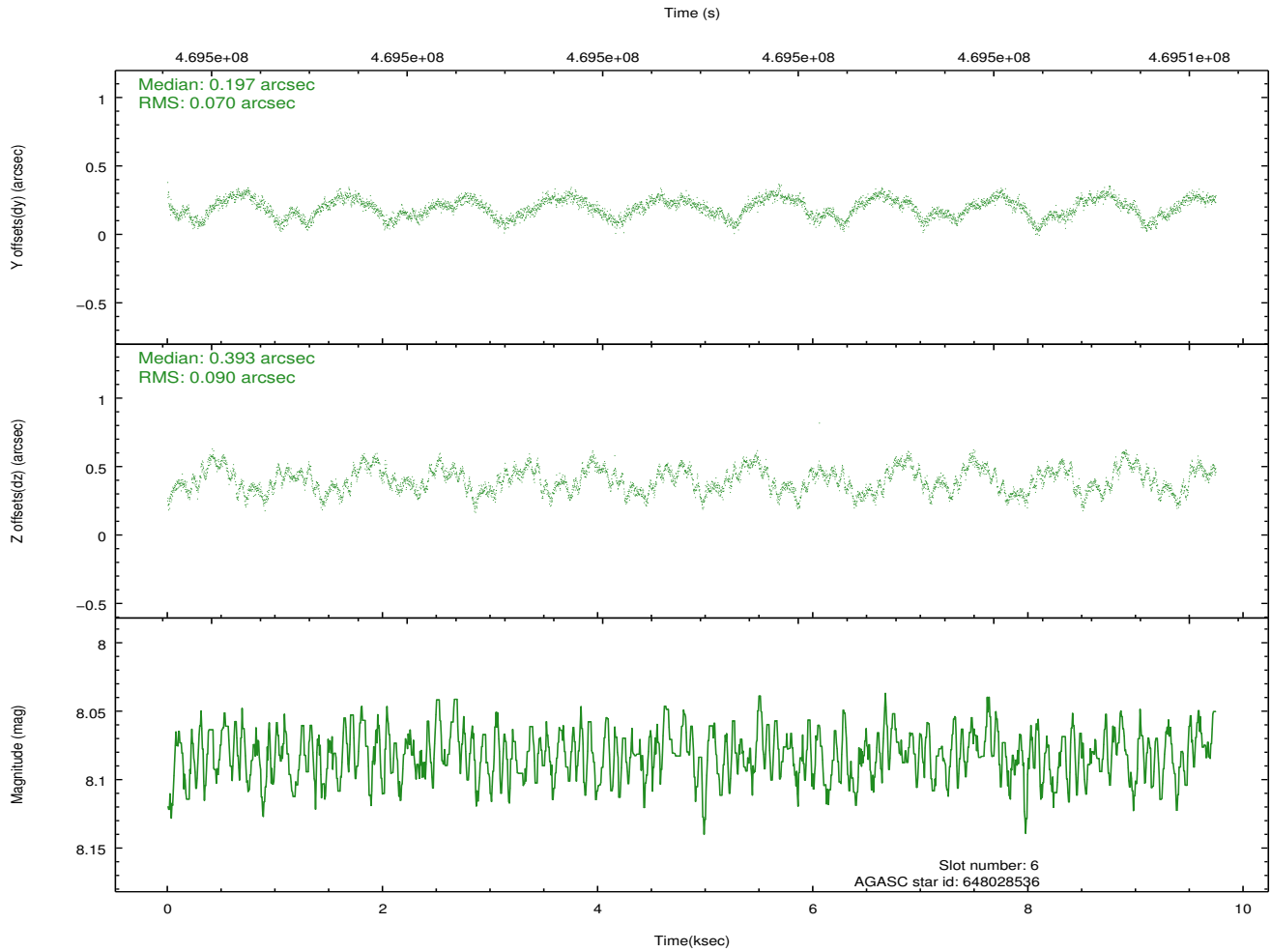
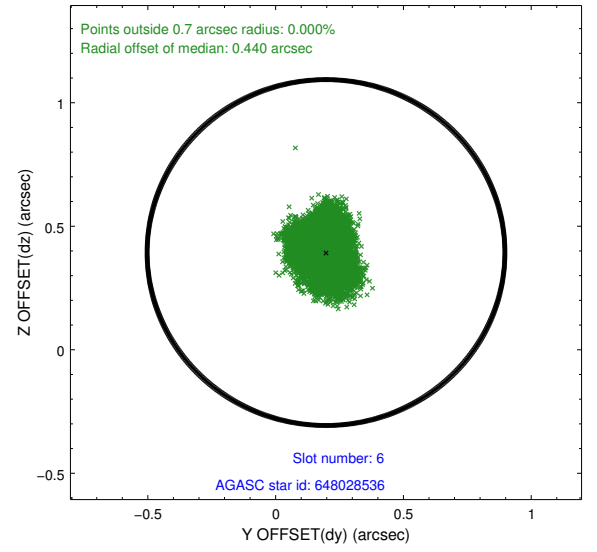
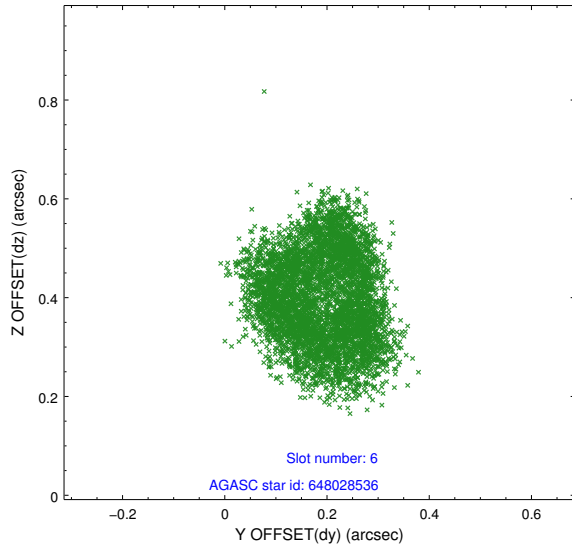
2.4.2 Slot 4



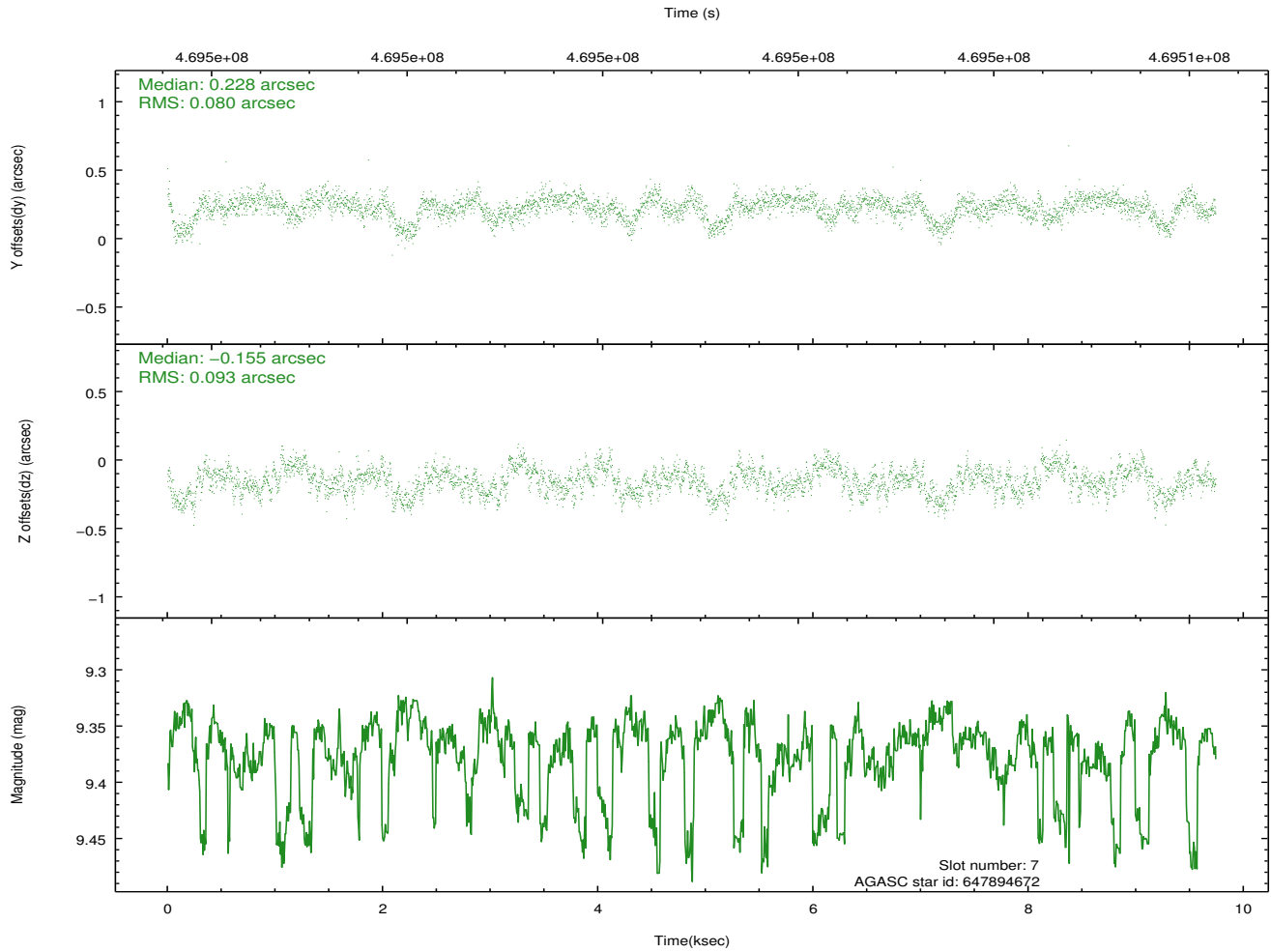
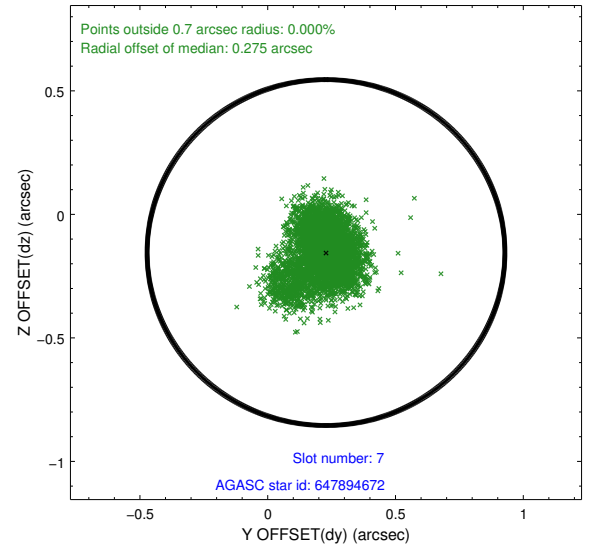
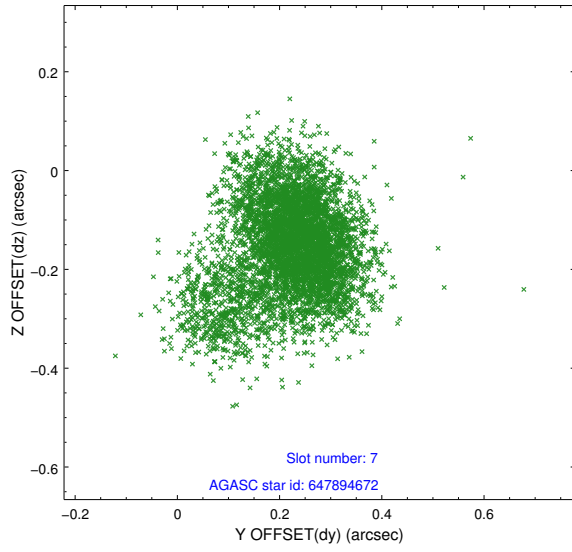
2.4.3 Slot 5



2.4.4 Slot 6

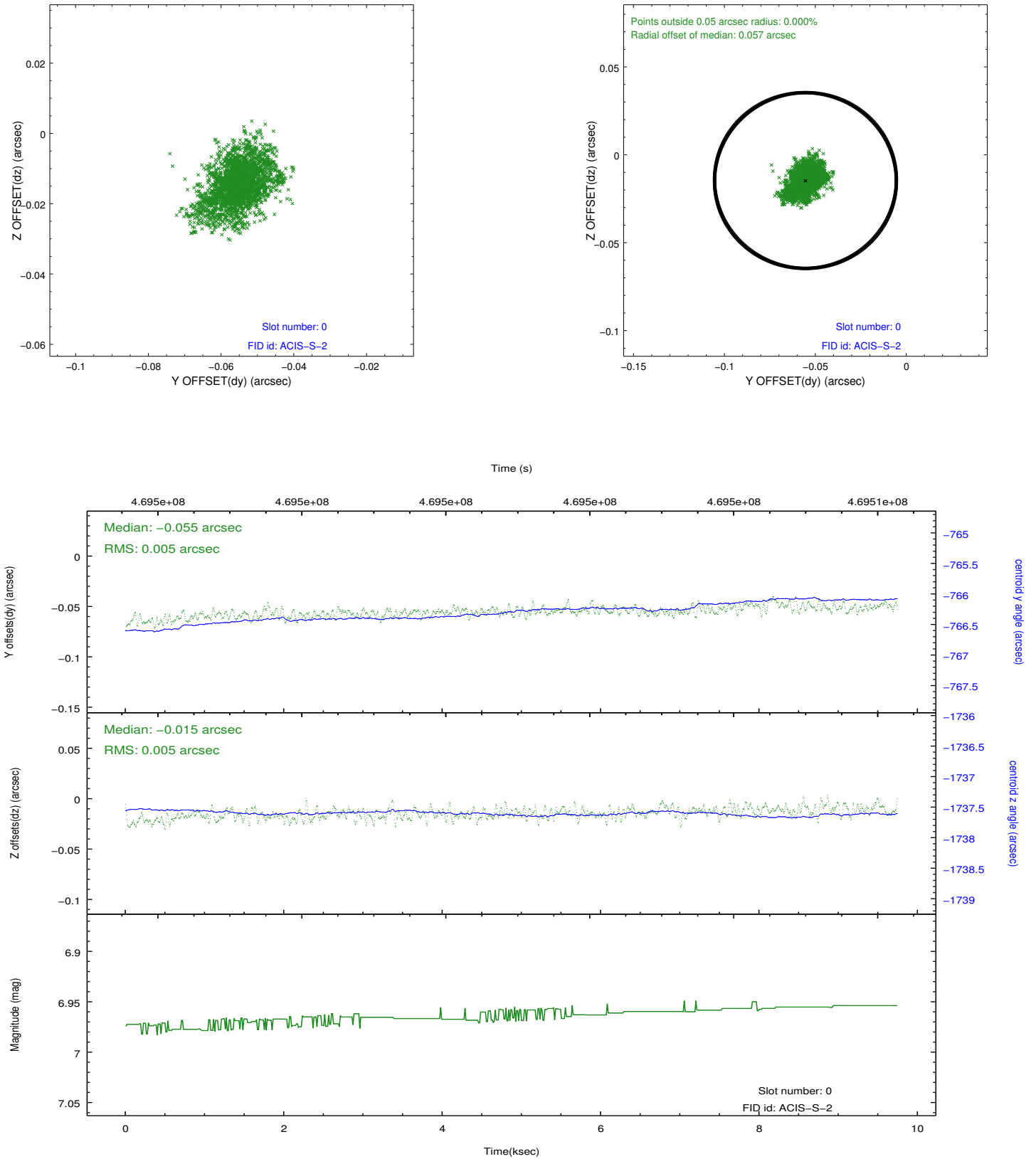


2.4.5 Slot 7

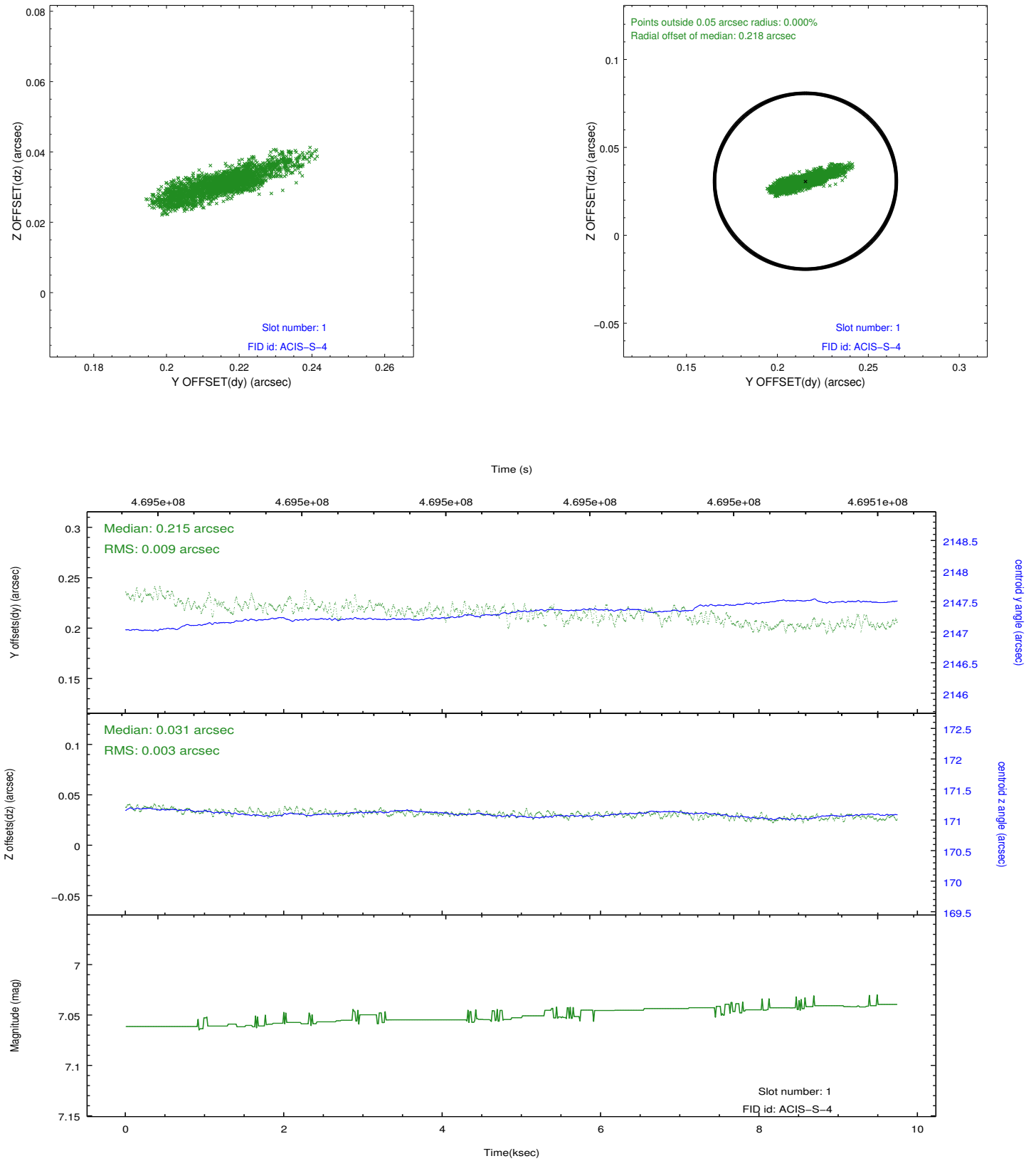


2.5 FID Slots

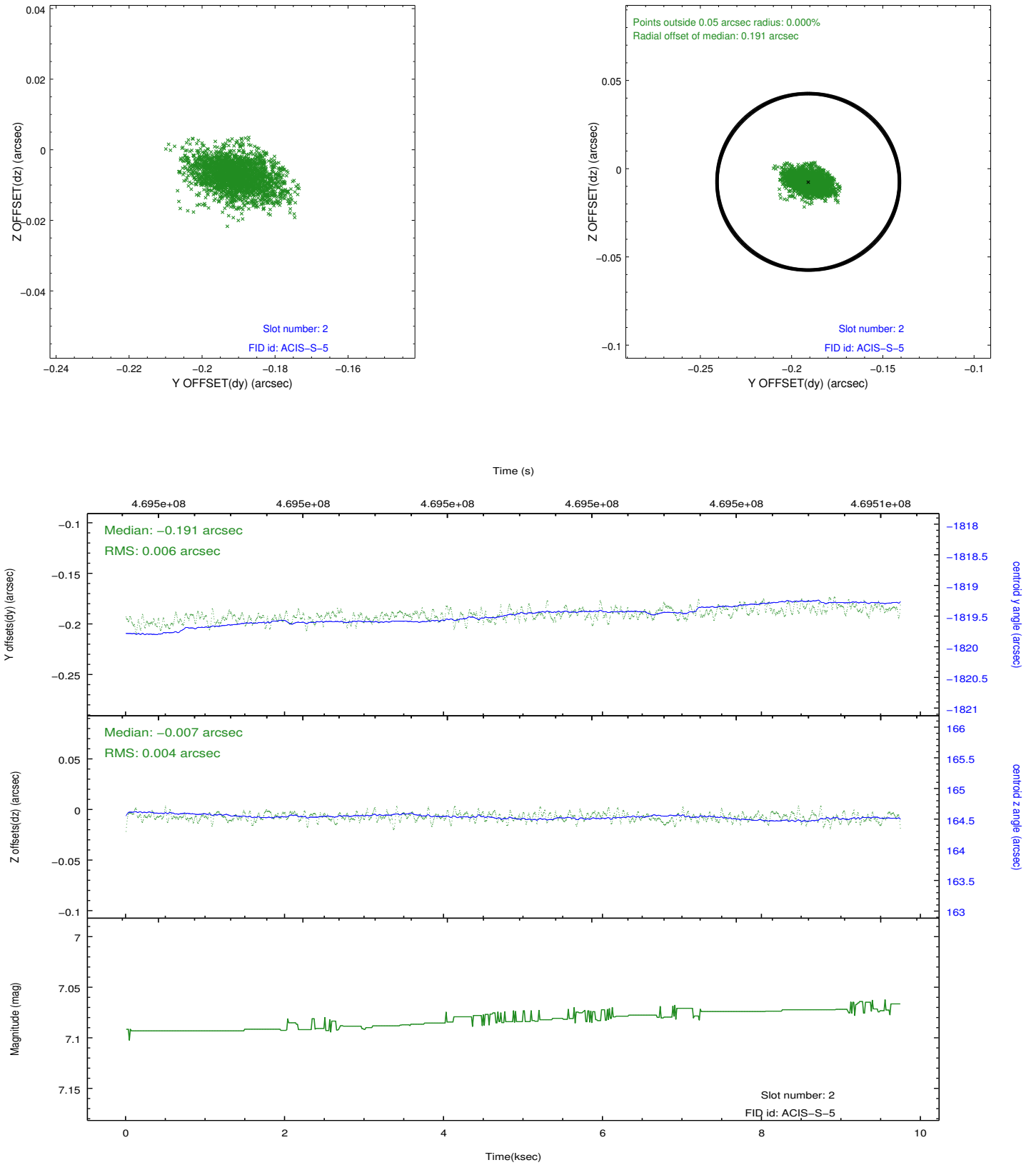
2.5.1 Slot 0



2.5.2 Slot 1



2.5.3 Slot 2



A Summary

A.1 Status

V&V Scientist	Jen Lauer
V&V Date (YYYY-MM-DD)	2014.12.03
V&V Edition	1
V&V Disposition and Status	OK
V&V Charge Time	9.6782000744343

A.2 Comments

These data have been reprocessed with new aspect alignment calibration files that correct small mean offsets (up to 0.4 arcsecs) and improve overall astrometric accuracy. The new calibration was determined using data from the time period being reprocessed and was performed using cross-correlation of X-ray sources with radio and optical counterparts.