

# V&V Reference Report

## L2 ASCDS Version : 8.4.5

Observation 13645 - L2 Version 1  
Chandra X-Ray Center

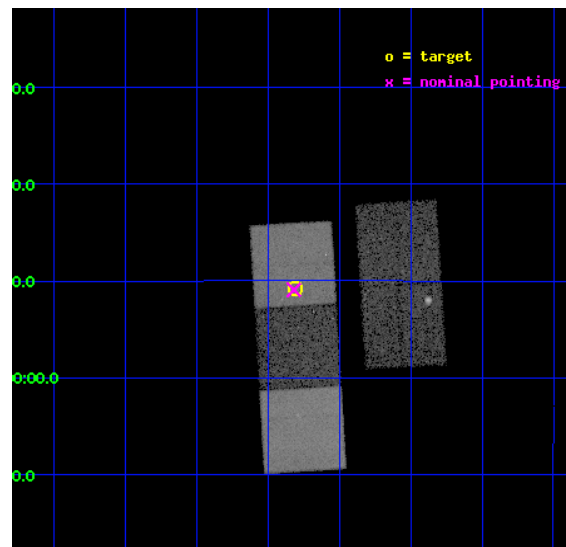
L2 Processing Date : Sep 10 2012

## Contents

<b>1</b>	<b>Front</b>	<b>2</b>
<b>2</b>	<b>OBI</b>	<b>3</b>
2.1	OBI . . . . .	3
2.1.1	Images . . . . .	3
2.1.2	Bias . . . . .	3
2.1.3	Parameters . . . . .	4
2.1.4	Events . . . . .	4
2.2	Compared Parameters . . . . .	5
2.3	Aspect . . . . .	6
2.4	Star Slots . . . . .	9
2.4.1	Slot 3 . . . . .	9
2.4.2	Slot 4 . . . . .	10
2.4.3	Slot 5 . . . . .	11
2.4.4	Slot 6 . . . . .	12
2.4.5	Slot 7 . . . . .	13
2.5	FID Slots . . . . .	14
2.5.1	Slot 0 . . . . .	14
2.5.2	Slot 1 . . . . .	15
2.5.3	Slot 2 . . . . .	16
<b>A</b>	<b>Summary</b>	<b>17</b>
A.1	Status . . . . .	17
A.2	Comments . . . . .	17

# 1 Front

seq_num	200799	Sequence number
obs_id	13645	Observation id
title	LIVING WITH A RED DWARF: MAGNETIC ACTIVITY, XUV IRRADIANCES OF dM STARS - EXOPLANET ATMOSPHERES AND ENVIRONMENT IMPACTS	Proposal titl
observer	Dr. Edward Guinan	Principal investigator
object	ROSS 193	Source name
dtcycle	0	&#160
cycle	P	events from which exps? Prim/Second/Both
ra_targ	314.202083	Observer's specified target RA [deg]
dec_targ	-4.846972	Observer's specified target Dec [deg]
ra_nom	314.20452084241	Nominal RA [deg]
dec_nom	-4.8487396779388	Nominal Dec [deg]
roll_nom	266.52728272317	Nominal Roll [deg]
revision	1	Processing version of data
ontime	20069.400154352	Sum of GTIs [s]
livetime	19807.178666458	Livetime [s]
ontime2	20069.400154352	Sum of GTIs [s]
ontime3	20069.400154352	Sum of GTIs [s]
ontime5	20069.400154352	Sum of GTIs [s]
ontime6	20069.400154352	Sum of GTIs [s]
ontime7	20069.400154352	Sum of GTIs [s]
l2events	165773	Number of level 2 events

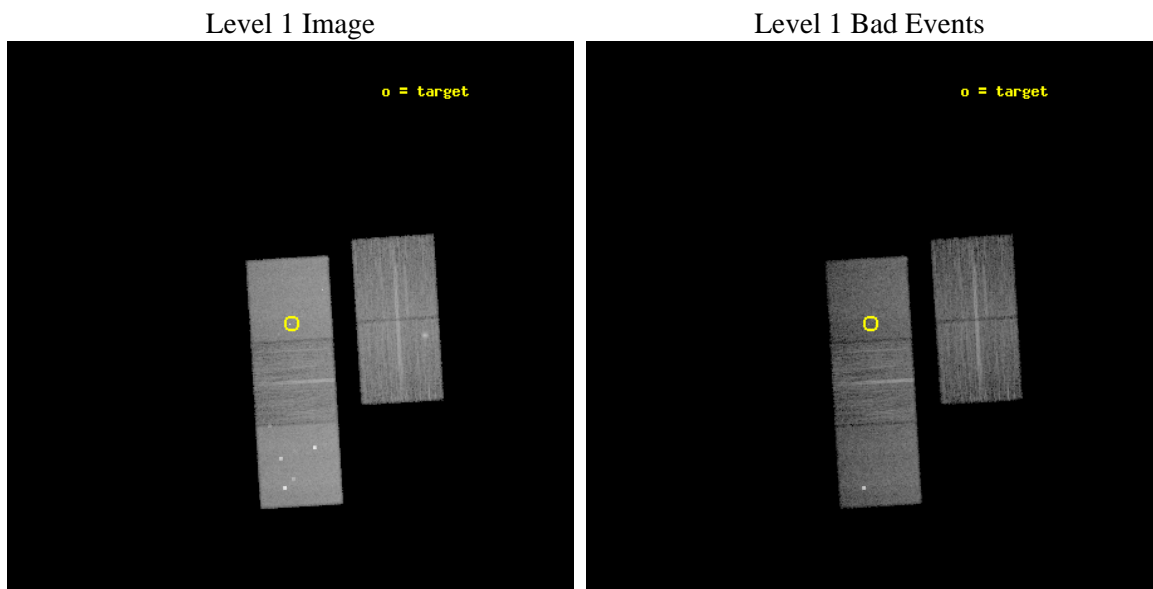




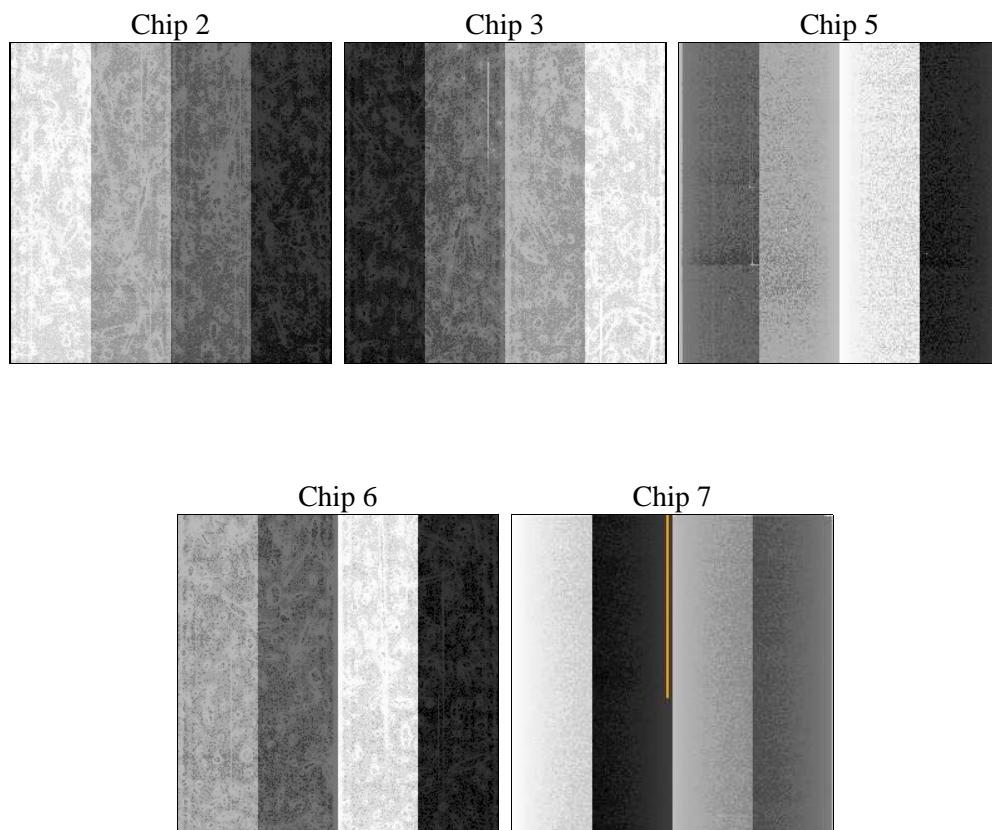
## 2 OBI

### 2.1 OBI

#### 2.1.1 Images



#### 2.1.2 Bias



### 2.1.3 Parameters

obi_num	1	Obi number	sched_exp_time	20000.000000	[s] Scheduled observation exposure time
ascdsver	8.4.5	Processing system revision	ontime	20069.400154352	Sum of GTIs [s]
caldsver	4.5.1.1	&#160	ontime2	20069.400154352	Sum of GTIs [s]
date	2012-09-10T12:36:10	Date and time of file creation	ontime3	20069.400154352	Sum of GTIs [s]
revision	1	Processing version of data	ontime5	20069.400154352	Sum of GTIs [s]
			ontime6	20069.400154352	Sum of GTIs [s]
			ontime7	20069.400154352	Sum of GTIs [s]
			l1events	604920	Number of level 1 events

### 2.1.4 Events

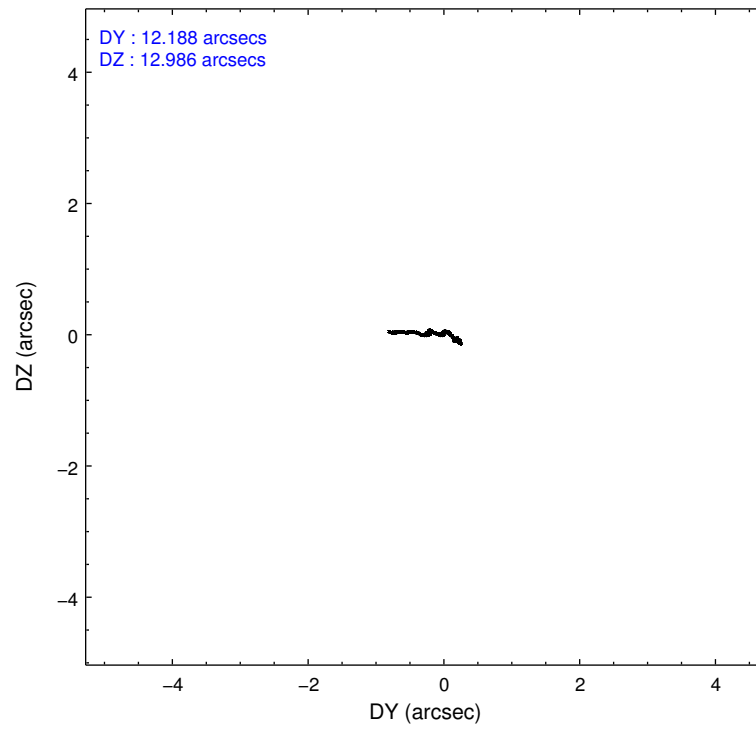
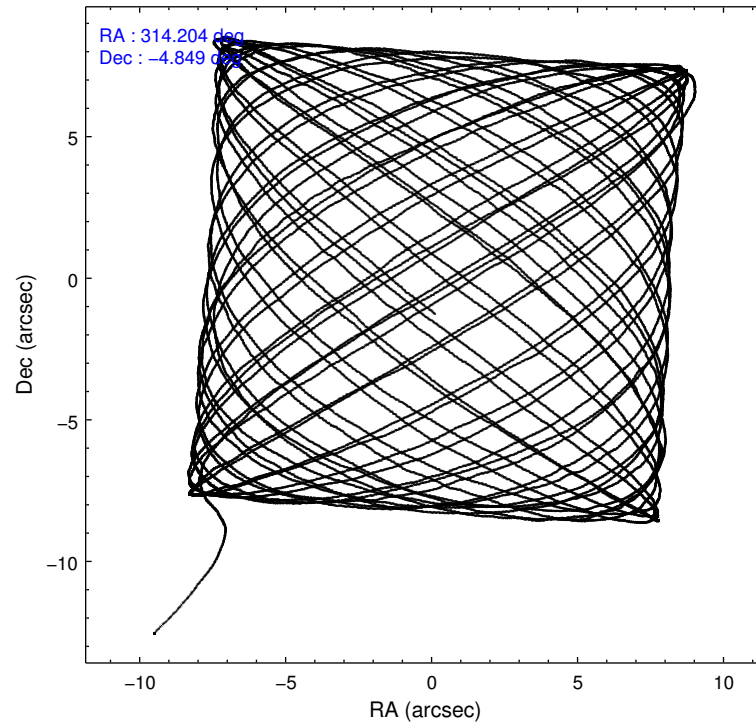
	ccd 2	ccd 3	ccd 5	ccd 6	ccd 7
level 1 events	99240	91955	176830	100015	136880
rejected events	85991	81033	87624	87598	76029
rejected %	86%	88%	49%	87%	55%

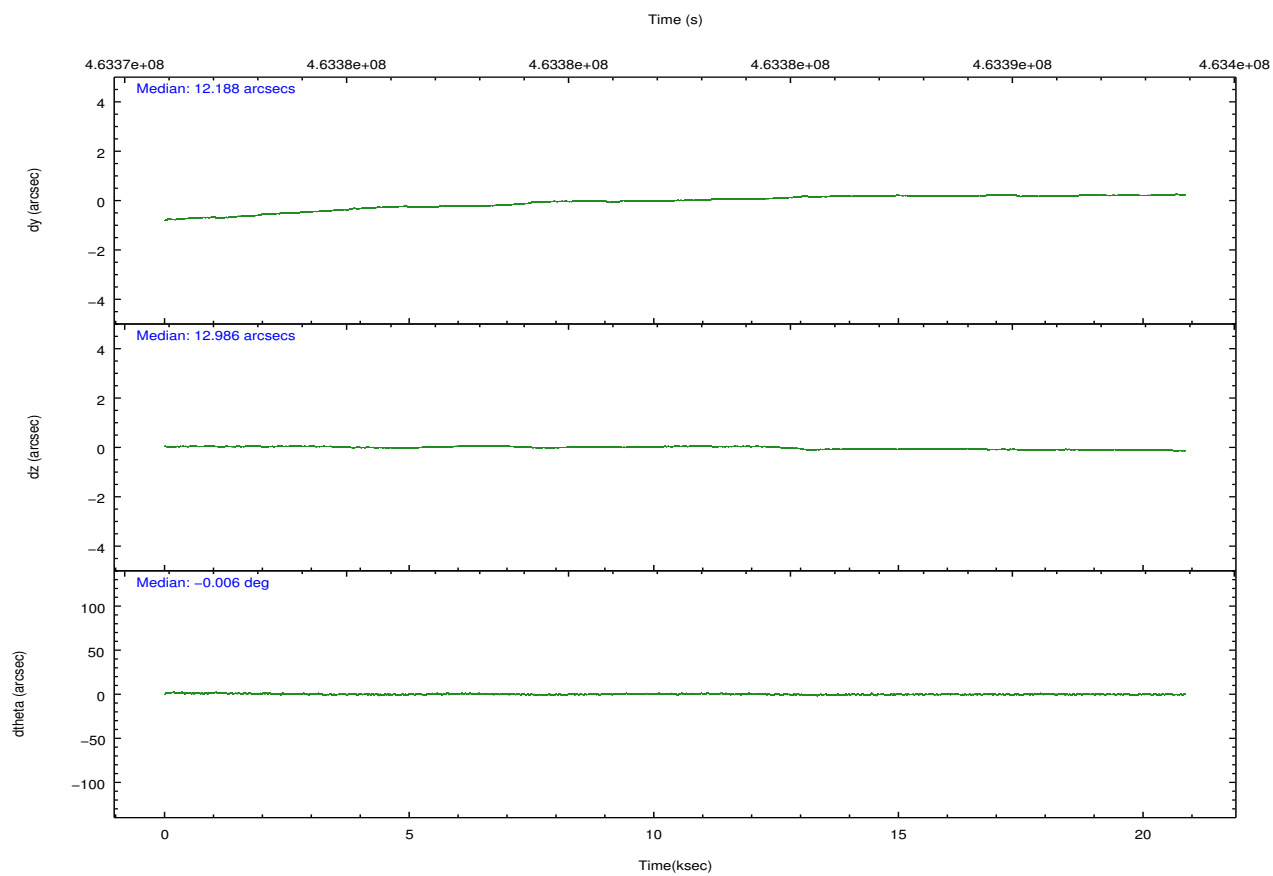
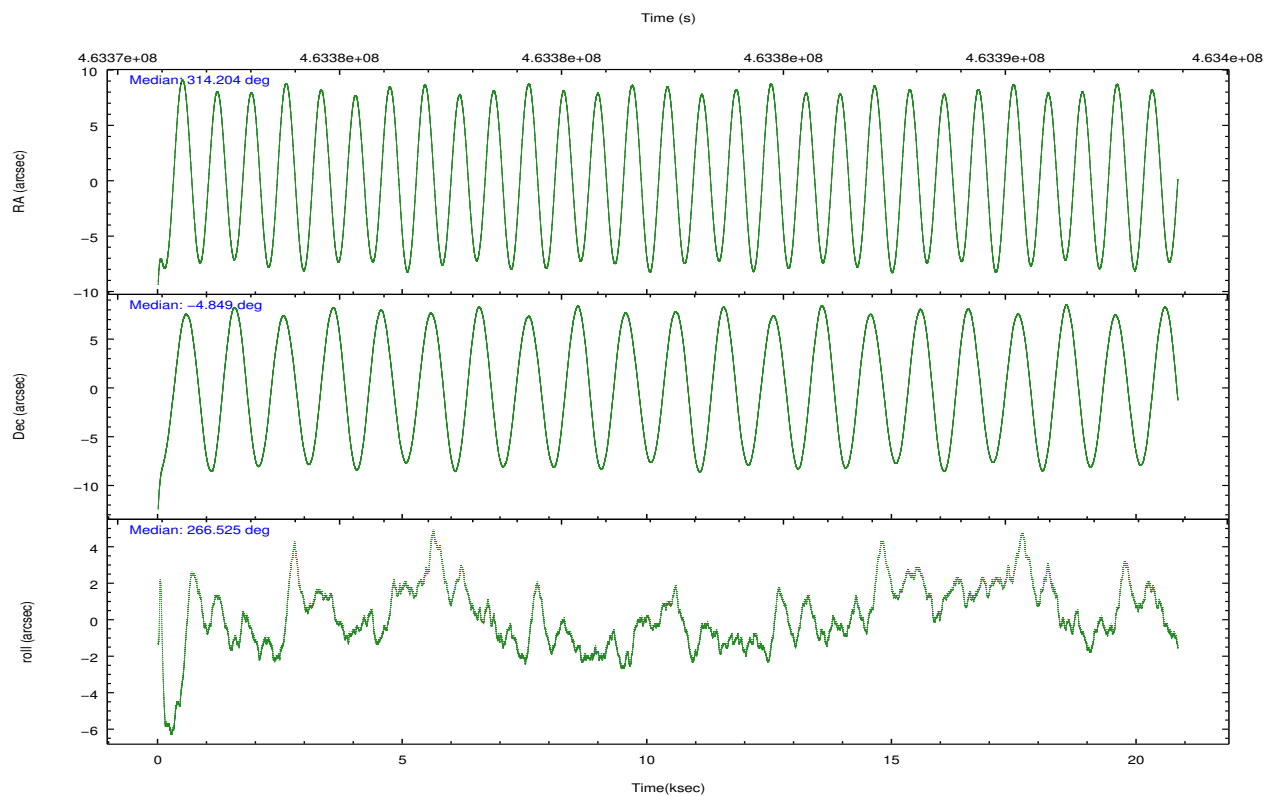
	ccd 2	ccd 3	ccd 5	ccd 6	ccd 7
grade 0 events	5490	3874	14485	4257	6081
	5%	4%	8%	4%	4%
grade 1 events	57	67	385	47	171
	0%	0%	0%	0%	0%
grade 2 events	3152	2471	25824	2866	12502
	3%	2%	14%	2%	9%
grade 3 events	1134	1125	4063	1266	5331
	1%	1%	2%	1%	3%
grade 4 events	1267	1178	2700	1256	5325
	1%	1%	1%	1%	3%
grade 5 events	4325	5173	14090	5160	13894
	4%	5%	7%	5%	10%
grade 6 events	2206	2277	42148	2772	31618
	2%	2%	23%	2%	23%
grade 7 events	81609	75790	73135	82391	61958
	82%	82%	41%	82%	45%

## 2.2 Compared Parameters

Parameter	Planned	Actual	Parameter	Planned	Actual
Instrument	ACIS	ACIS	Obspar format version number	7	7
Detector	ACIS-23567	ACIS-23567	Obspar file type	PREDICTED	ACTUAL
Grating	NONE	NONE	Obspar update status	NONE	UPDATED
Data mode	FAINT	FAINT	Number of optional ACIS chips dropped	0	0
Observation mode	POINTING	POINTING	On-chip summing requested	N	N
[deg] Pointing RA	314.191951	314.2045208424067	Subarray requested	NONE	NONE
[deg] Pointing Dec	-4.824458	-4.848739677938784	Alternating exposures requested	N	N
[deg] Pointing Roll	266.369588	266.5272827231682	[s] Primary exposure time	0.000000	3.1
[mm] SIM focus pos	-0.684267	-0.6828225247311905			
[mm] SIM defocus	0	0.001444936568705701			
[mm] SIM translation stage pos	-190.132523	-190.1400660498719			
[mm] SIM translation stage offset	0	0.00754346686406393			
[s] Observation start time (MET)	463372824.184000	463371039.89067			
Observation start date	2012-09-07T02:39:17	2012-09-07T02:10:39			
[s] Observation end time (MET)	463392824.184000	463393162.97936			
Observation end date	2012-09-07T08:12:37	2012-09-07T08:19:22			
Read mode	TIMED	TIMED			

## 2.3 Aspect



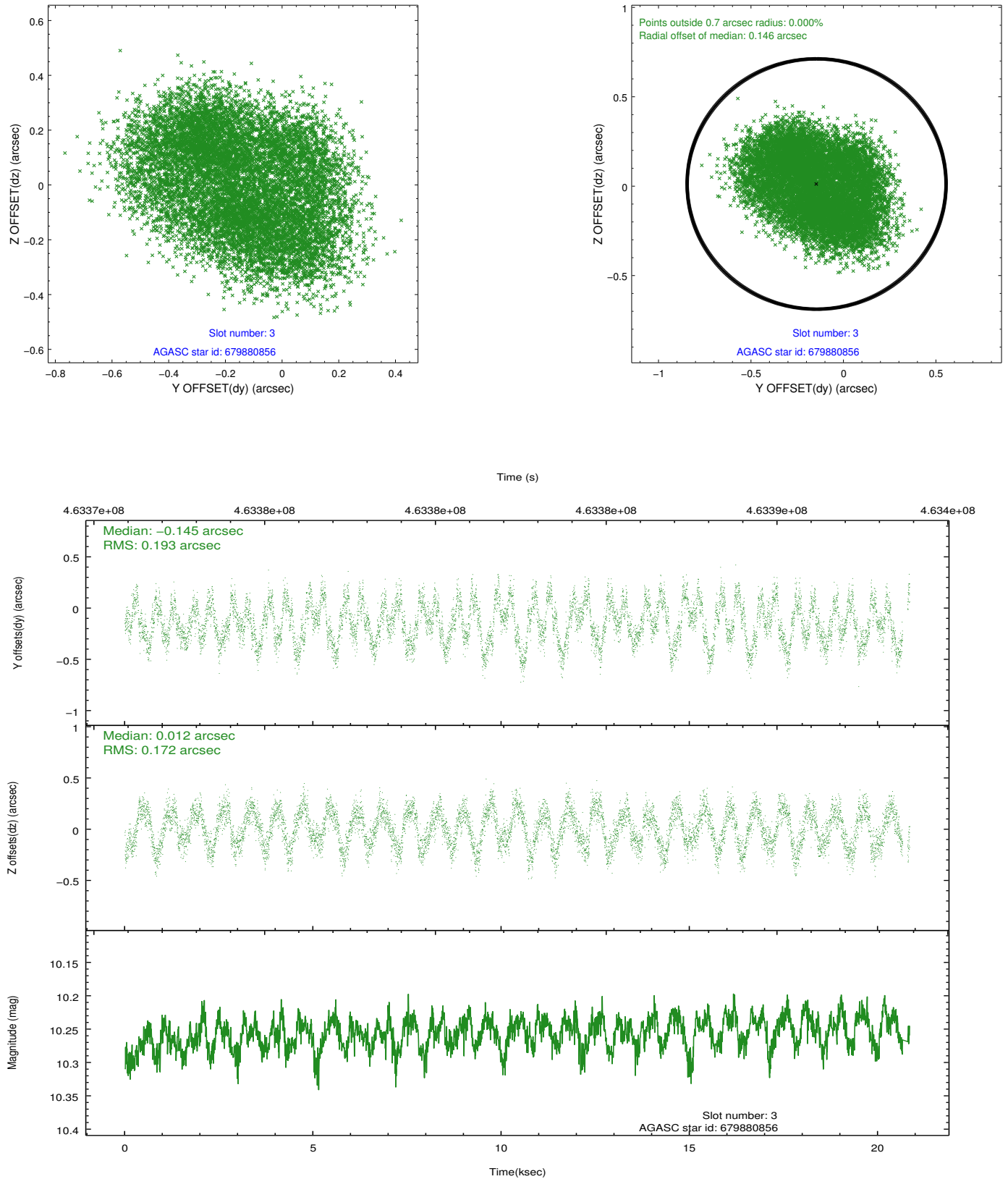


### Slot Statistics

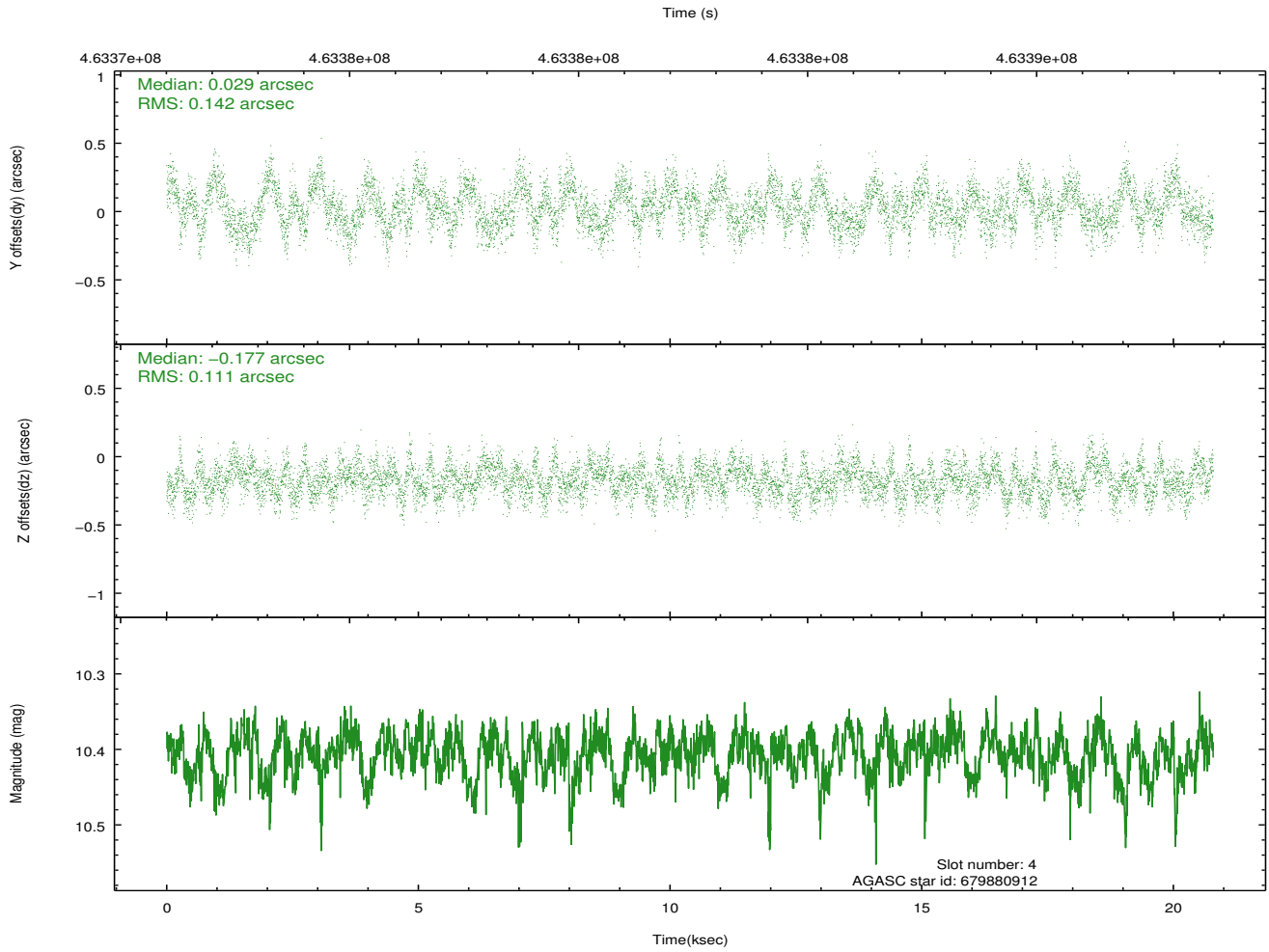
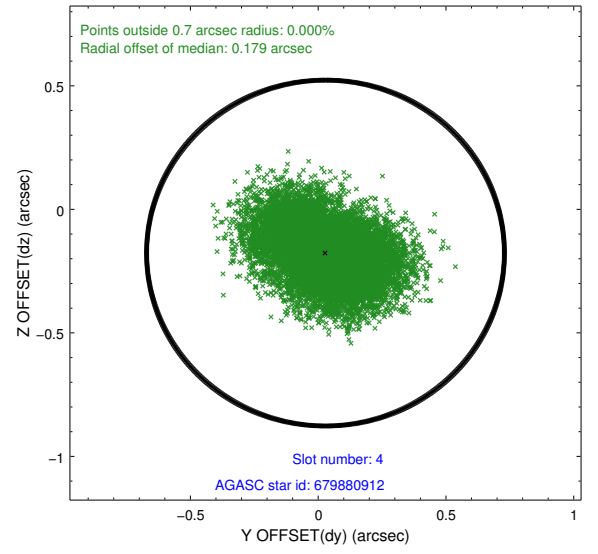
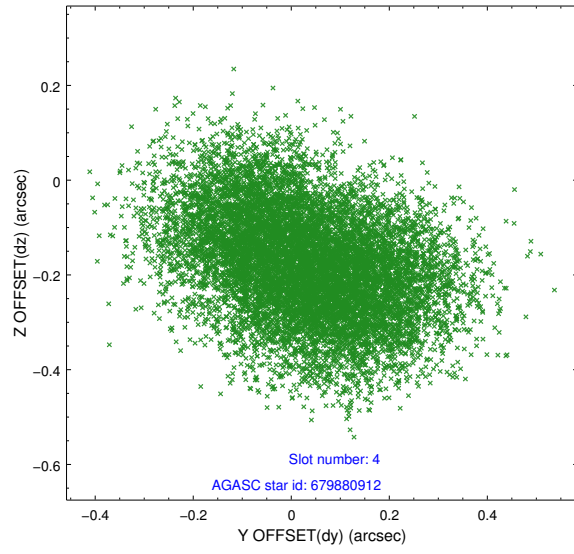
slot	status	id	mag	n_pts	med_dy	med_dz	dr1	dr2	ra	dec	mean_y	mean_z
0	FID	ACIS-S-1	7.01	5084	0.101	-0.060	0.010	0.019	0.000000	0.000000	931.13	-1729.98
1	FID	ACIS-S-5	7.05	5085	-0.124	0.078	0.009	0.017	0.000000	0.000000	-1817.99	167.53
2	FID	ACIS-S-6	7.15	5084	0.003	-0.006	0.007	0.012	0.000000	0.000000	396.40	811.60
3	GUIDE	679880856	10.26	10075	-0.145	0.012	0.285	0.411	313.875007	-4.193808	-2192.99	-1279.37
4	GUIDE	679880912	10.41	10123	0.029	-0.177	0.195	0.306	314.438464	-5.360393	1870.18	1003.97
5	GUIDE	679884440	8.48	10167	-0.244	0.178	0.133	0.194	314.085119	-4.911965	339.28	-361.95
6	GUIDE	679884832	7.10	10168	-0.152	-0.022	0.101	0.153	313.520168	-4.542180	-859.90	-2469.47
7	GUIDE	679871496	8.03	10167	0.500	0.000	0.106	0.178	313.646494	-5.465572	2429.16	-1804.66

## 2.4 Star Slots

### 2.4.1 Slot 3

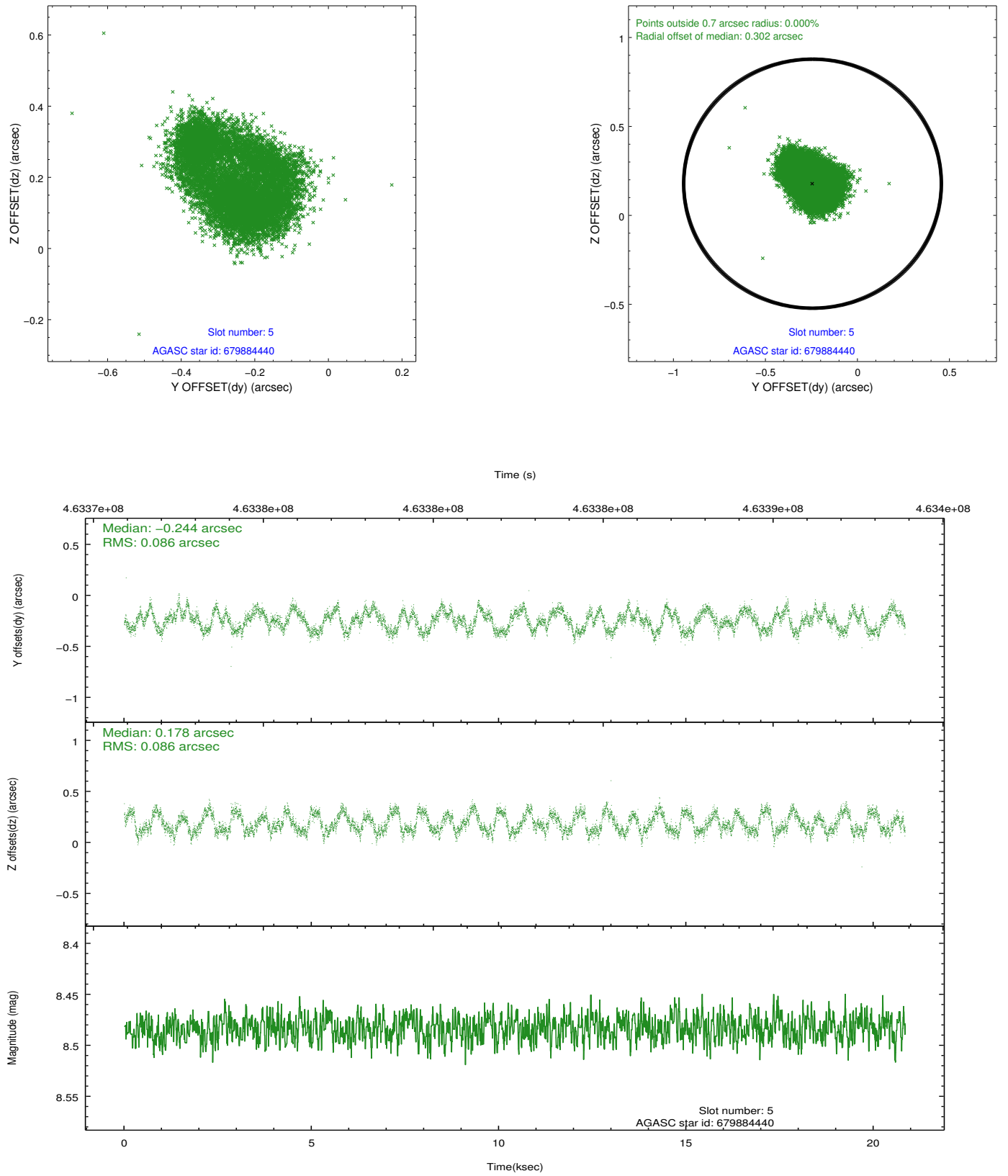


## 2.4.2 Slot 4

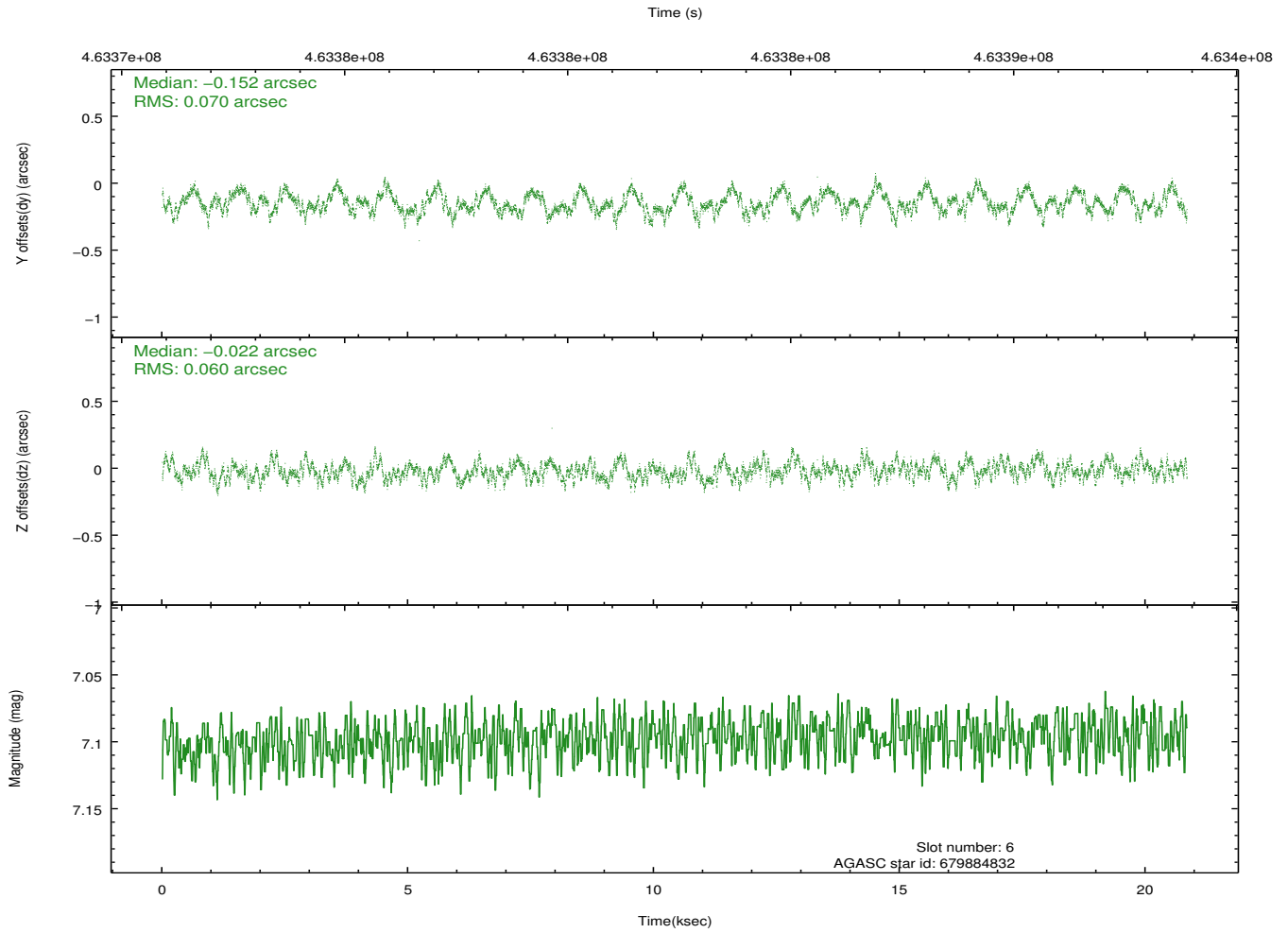
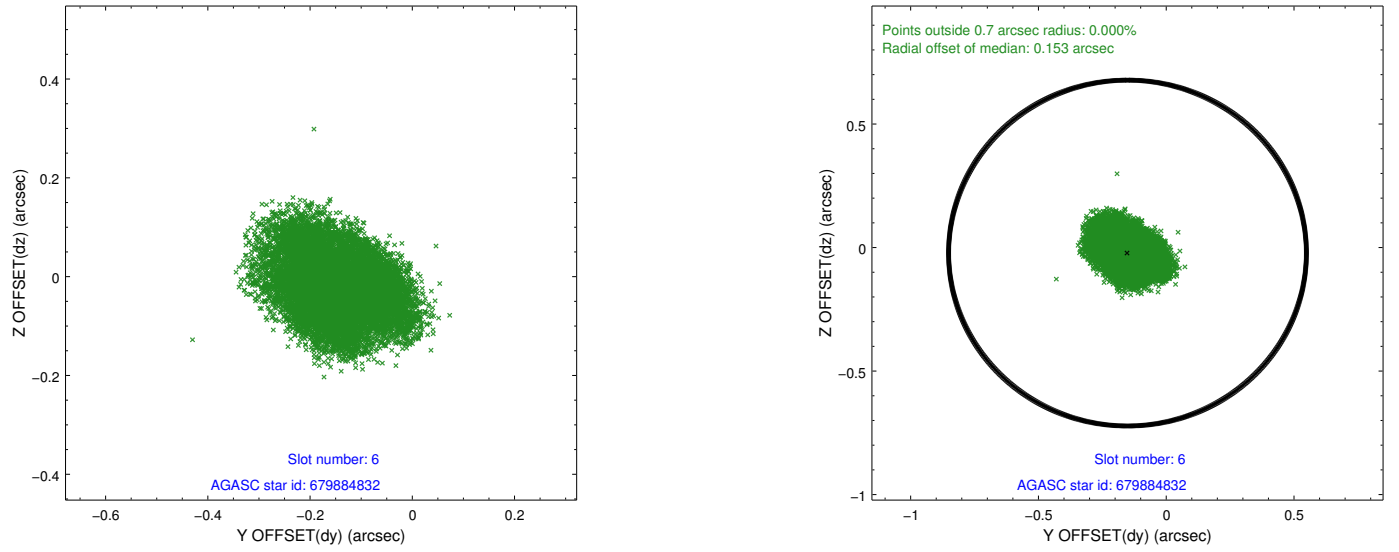




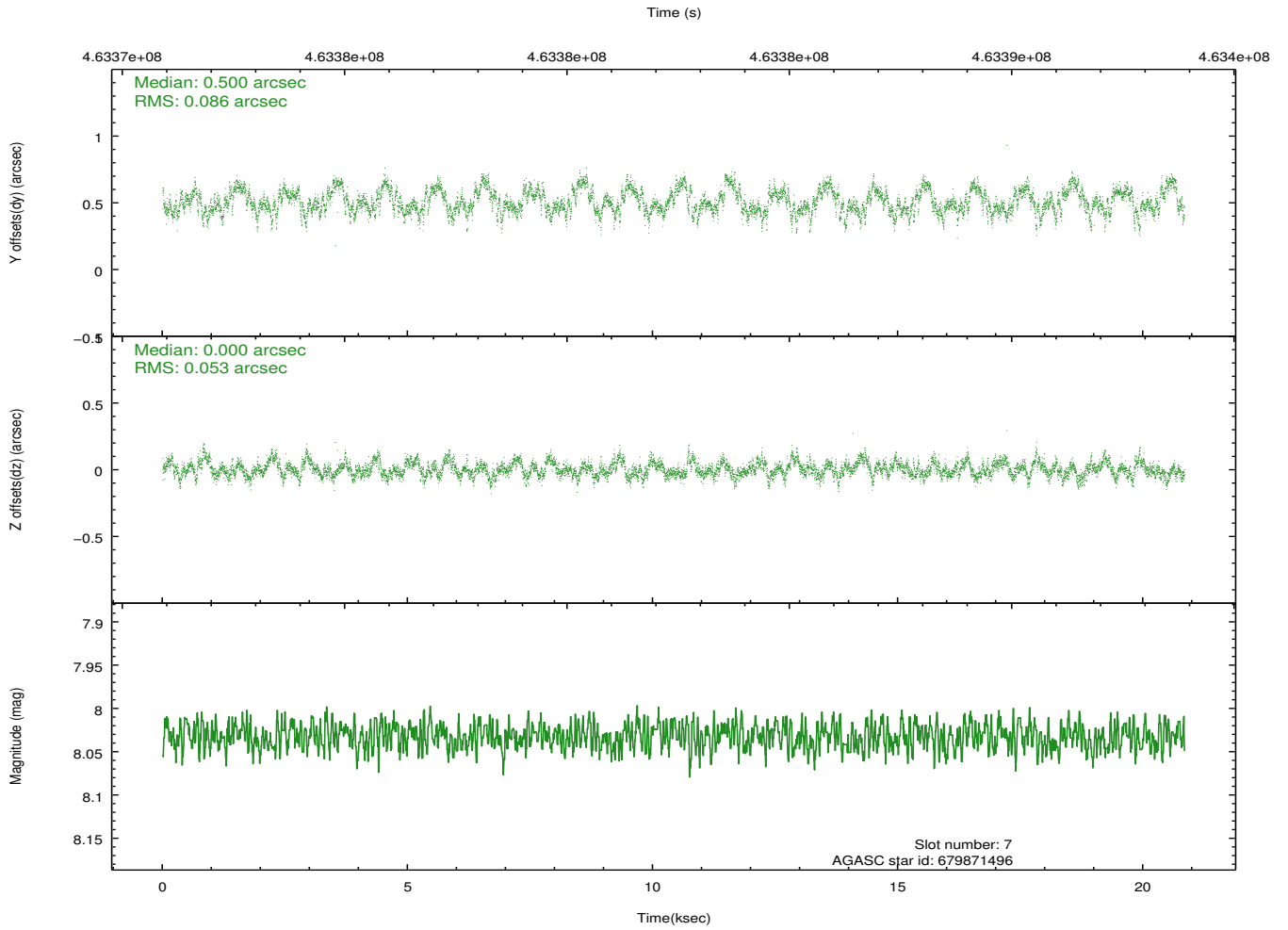
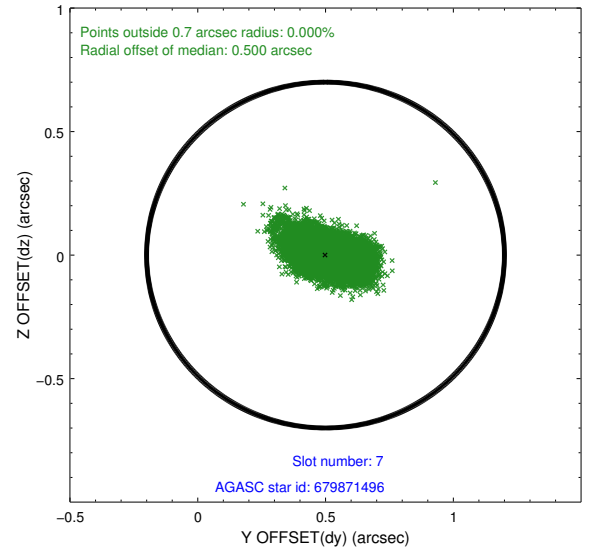
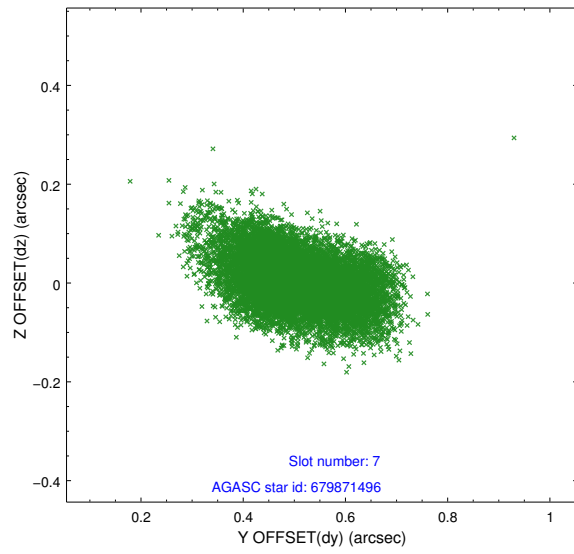
### 2.4.3 Slot 5



## 2.4.4 Slot 6

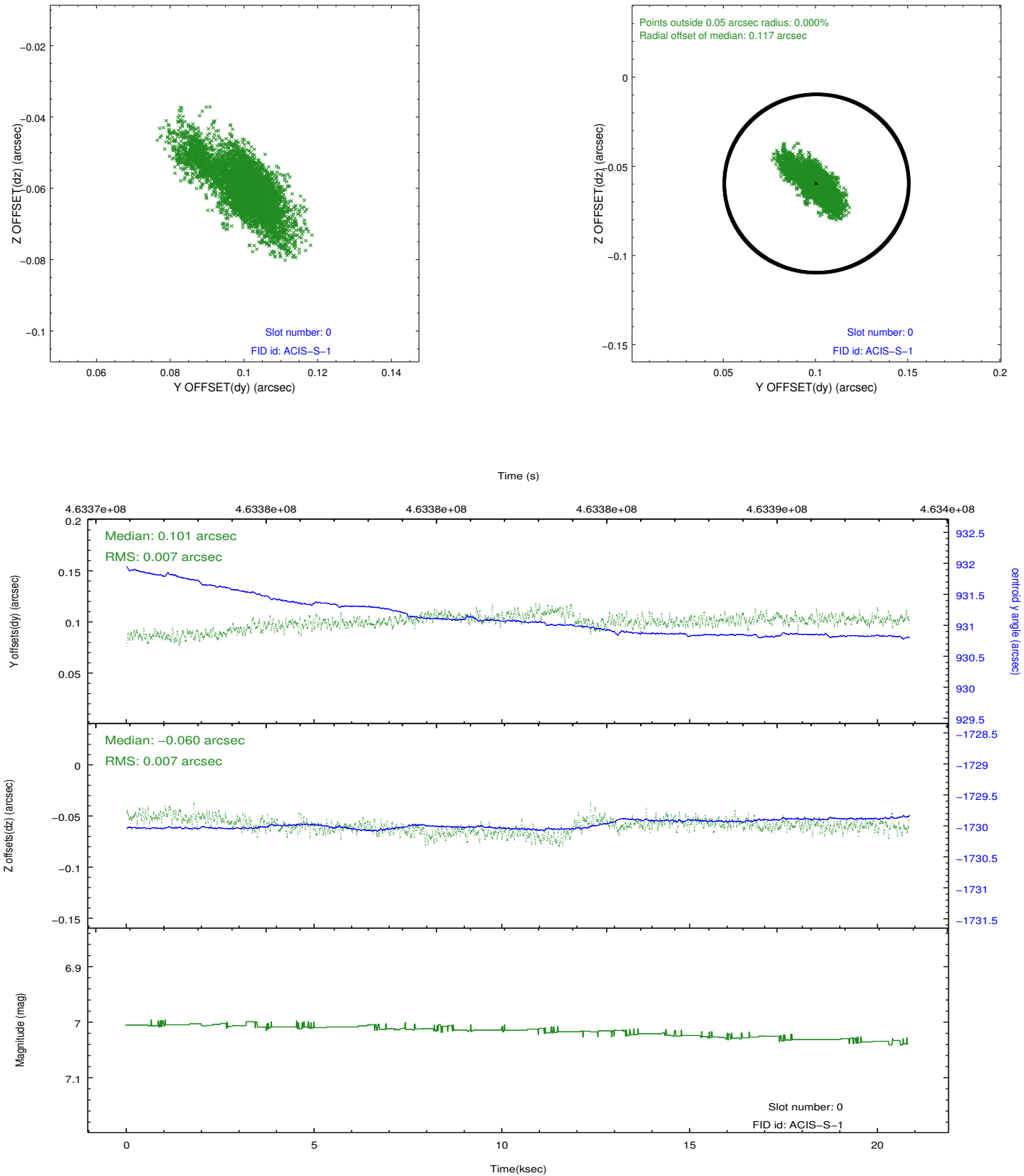


## 2.4.5 Slot 7

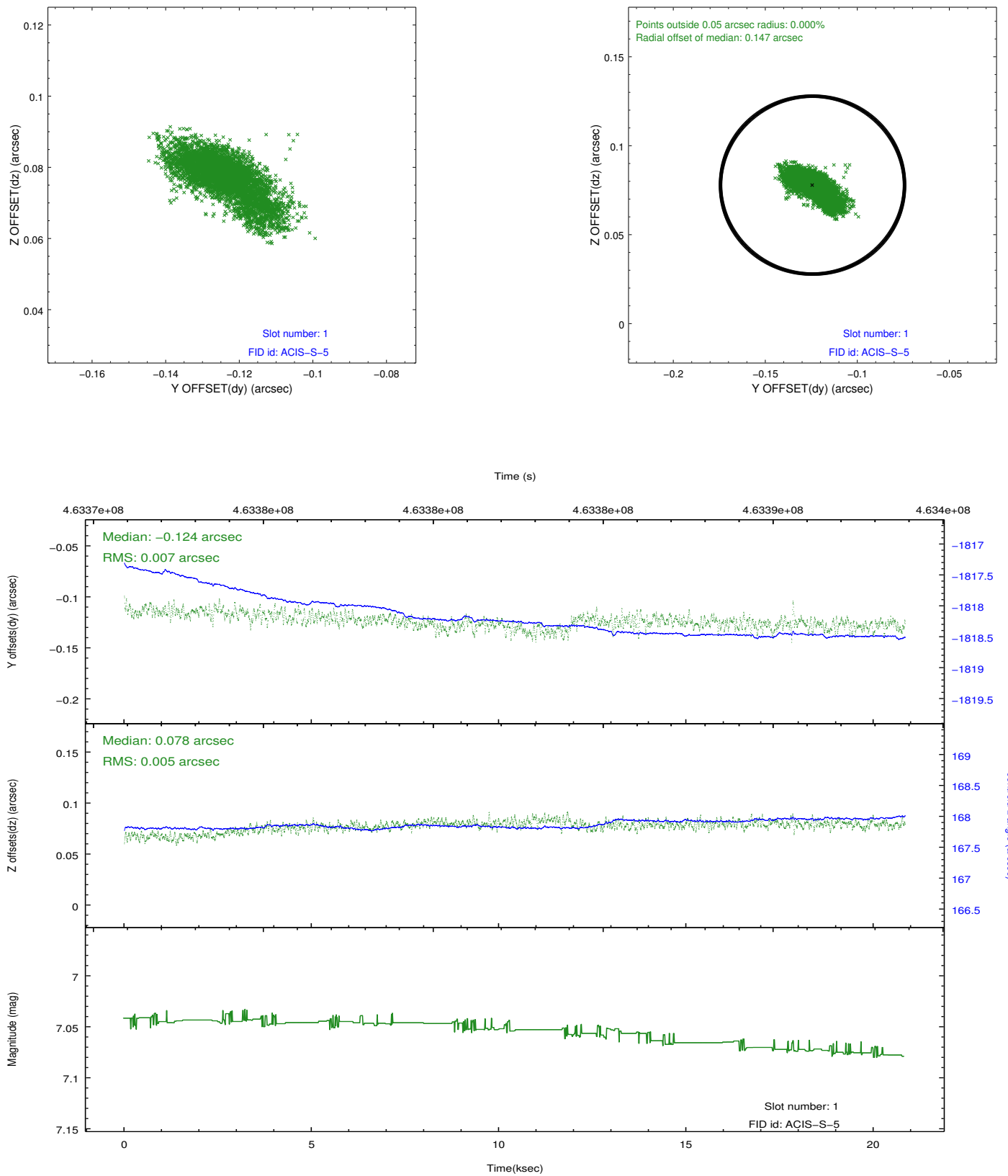


## 2.5 FID Slots

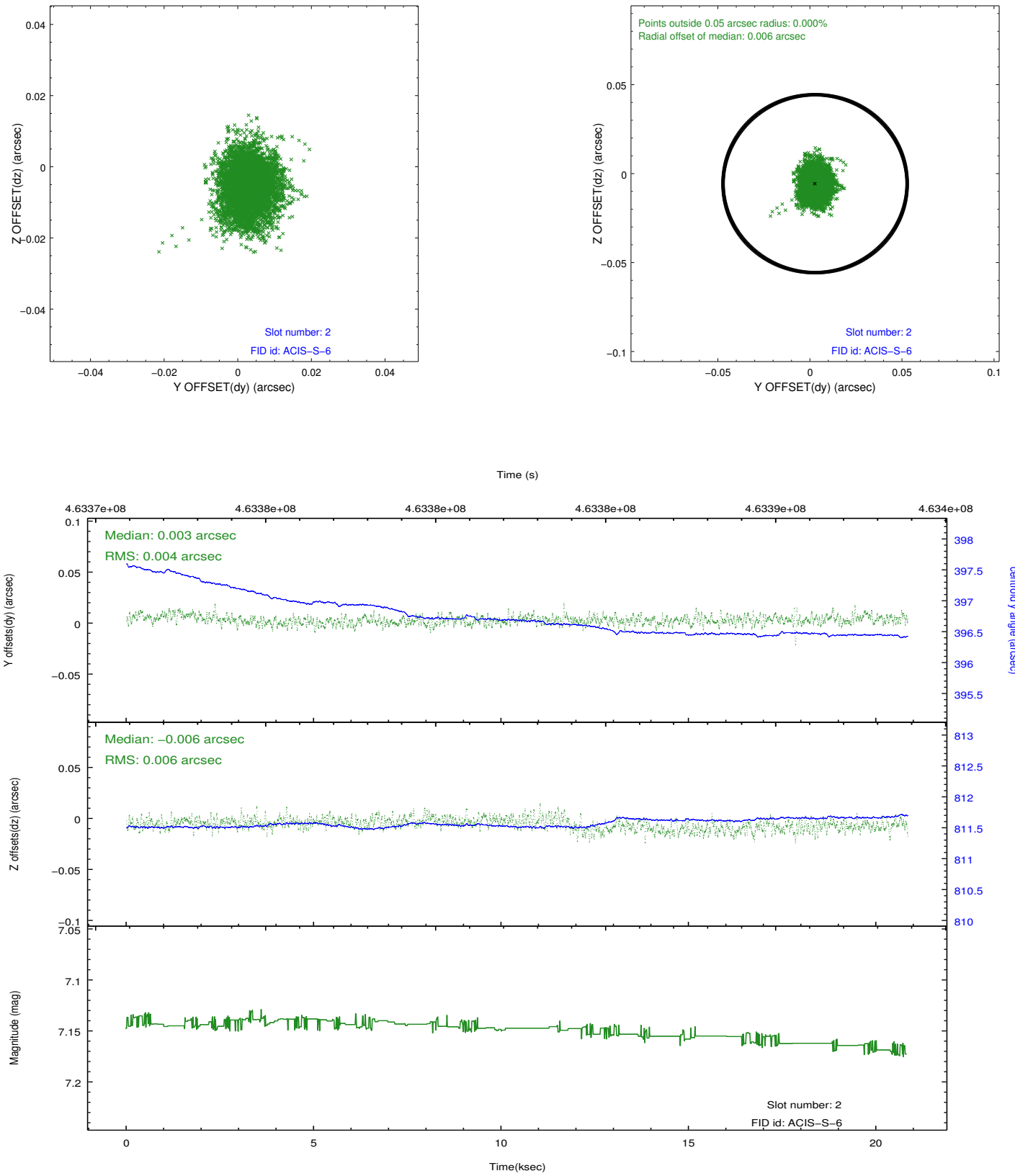
### 2.5.1 Slot 0



## 2.5.2 Slot 1



### 2.5.3 Slot 2



## A Summary

### A.1 Status

V&V Scientist	Joy Nichols
V&V Date (YYYY-MM-DD)	2012.09.10
V&V Edition	1
V&V Disposition and Status	OK
V&V Charge Time	20.069400154352

### A.2 Comments