

V&V Reference Report

L2 ASCDS Version : 8.4.3

Observation 13615 - L2 Version 2
Chandra X-Ray Center

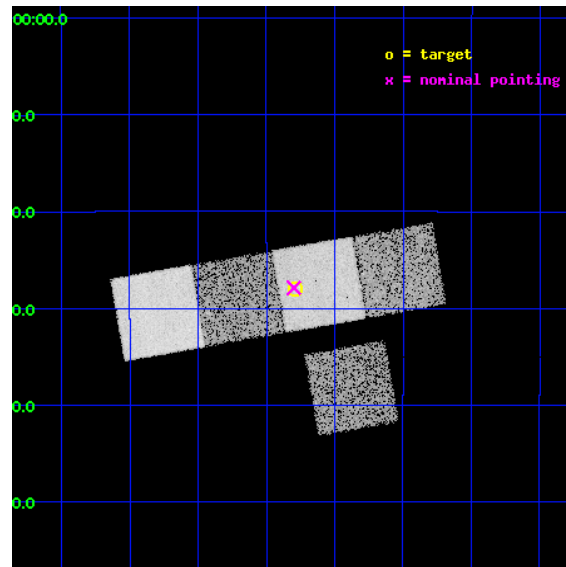
L2 Processing Date : Feb 27 2012

Contents

1	Front	2
2	OBI	3
2.1	OBI	3
2.1.1	Images	3
2.1.2	Bias	3
2.1.3	Parameters	4
2.1.4	Events	4
2.2	Compared Parameters	5
2.3	Aspect	6
2.4	Star Slots	9
2.4.1	Slot 3	9
2.4.2	Slot 4	10
2.4.3	Slot 5	11
2.4.4	Slot 6	12
2.4.5	Slot 7	13
2.5	FID Slots	14
2.5.1	Slot 0	14
2.5.2	Slot 1	15
2.5.3	Slot 2	16
A	Summary	17
A.1	Status	17
A.2	Comments	17

1 Front

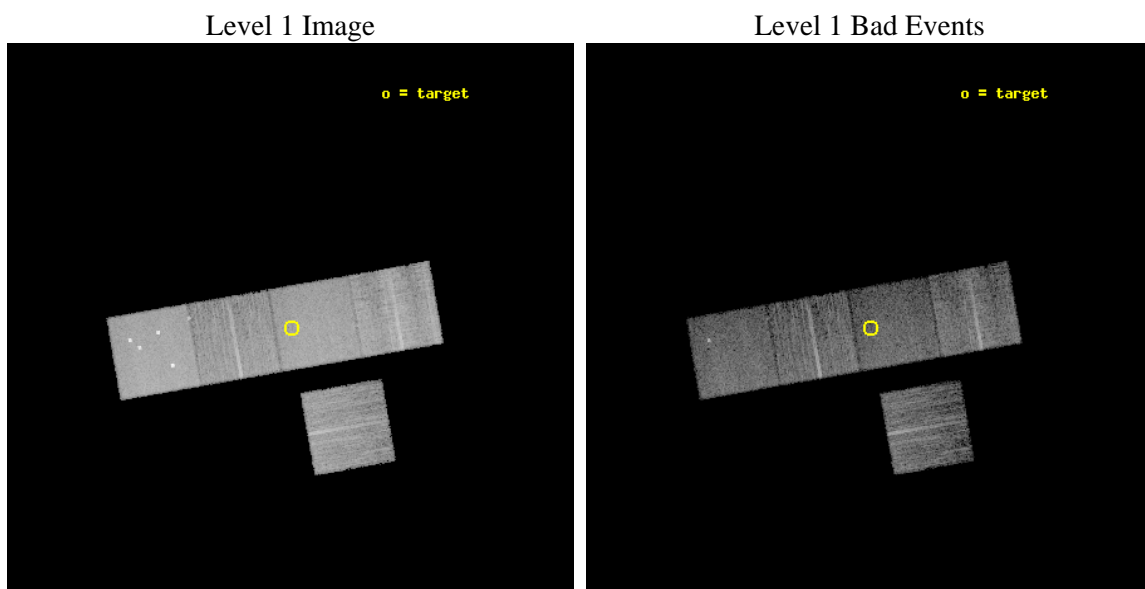
seq_num	200769	Sequence number
obs_id	13615	Observation id
title	The X-ray puzzle of late B and early A stars	Proposal title
observer	Dr. Jan Robrade	Principal investigator
object	HD 22470	Source name
dtcycle	0	
cycle	P	events from which exps? Prim/Second/Both
ra_targ	54.0725	Observer's specified target RA [deg]
dec_targ	-17.467056	Observer's specified target Dec [deg]
ra_nom	54.074655476947	Nominal RA [deg]
dec_nom	-17.464839375257	Nominal Dec [deg]
roll_nom	350.09724619483	Nominal Roll [deg]
revision	2	Processing version of data
ontime	11042.200084925	Sum of GTIs [s]
livetime	10897.925611666	Livetime [s]
ontime3	11042.200084925	Sum of GTIs [s]
ontime5	11042.200084925	Sum of GTIs [s]
ontime6	11042.200084925	Sum of GTIs [s]
ontime7	11042.200084925	Sum of GTIs [s]
ontime8	11042.200084925	Sum of GTIs [s]
l2events	108436	Number of level 2 events



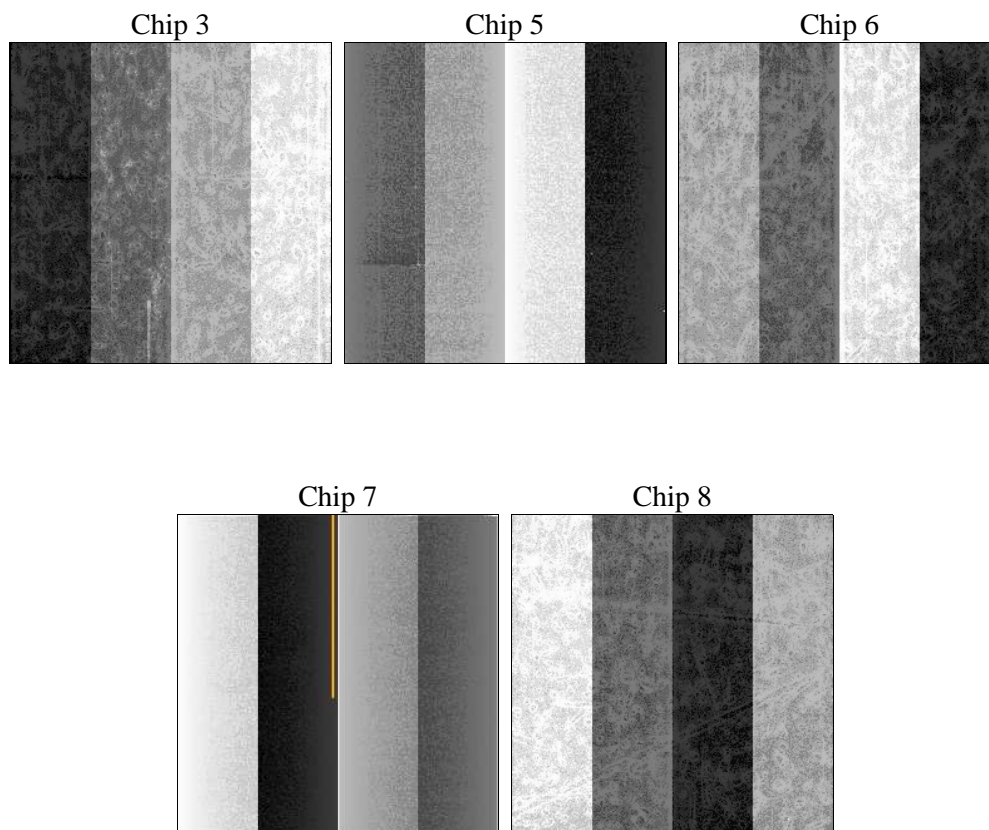
2 OBI

2.1 OBI

2.1.1 Images



2.1.2 Bias



2.1.3 Parameters

obi_num	1	Obi number	sched_exp_time	11000.000000	[s] Scheduled observation exposure time
ascdsver	8.4.3	Processing system revision	ontime	11042.200084925	Sum of GTIs [s]
caldsver	4.4.8	 	ontime3	11042.200084925	Sum of GTIs [s]
date	2012-02-27T11:59:14	Date and time of file creation	ontime5	11042.200084925	Sum of GTIs [s]
revision	2	Processing version of data	ontime6	11042.200084925	Sum of GTIs [s]
			ontime7	11042.200084925	Sum of GTIs [s]
			ontime8	11042.200084925	Sum of GTIs [s]
			l1events	425958	Number of level 1 events

2.1.4 Events

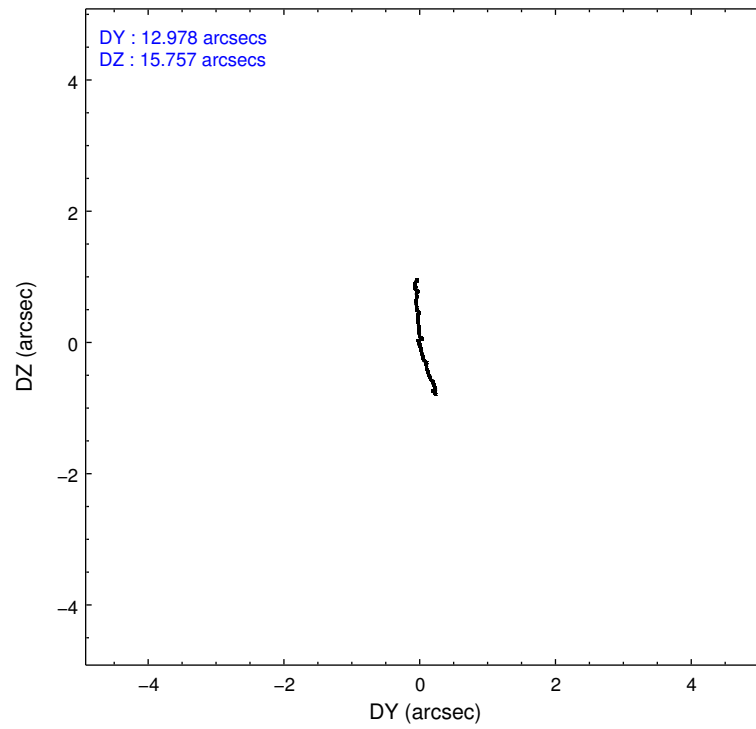
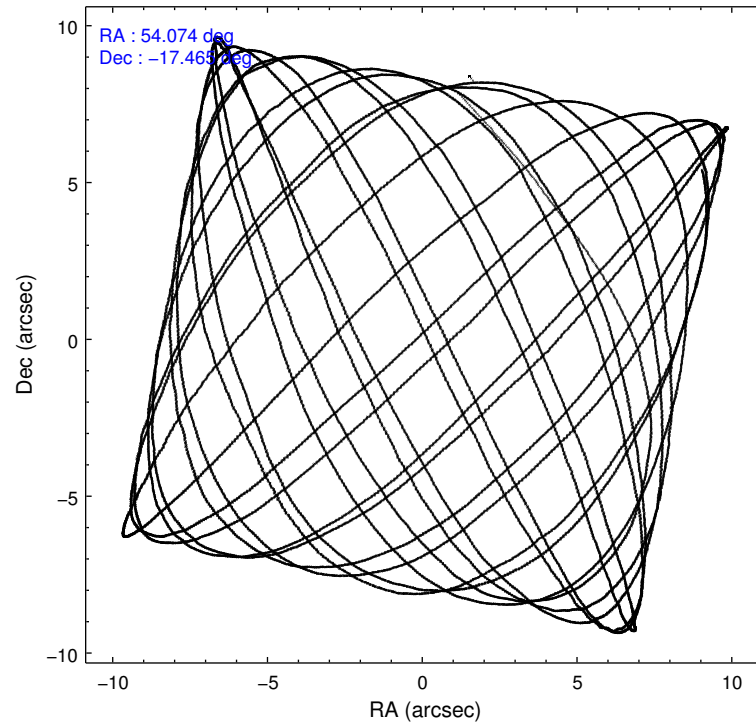
	ccd 3	ccd 5	ccd 6	ccd 7	ccd 8
level 1 events	66393	112993	69448	87499	89625
rejected events	59399	55718	61448	48546	65637
rejected %	89%	49%	88%	55%	73%

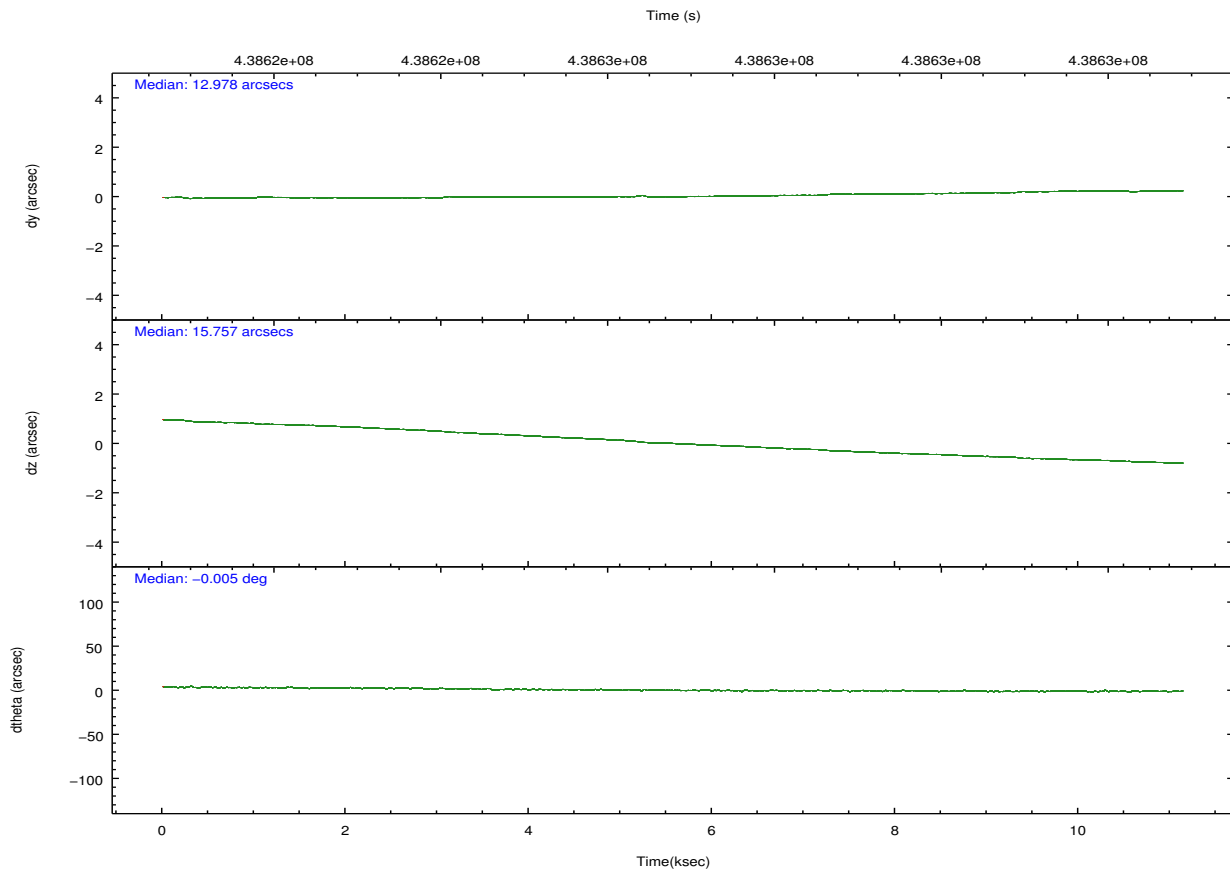
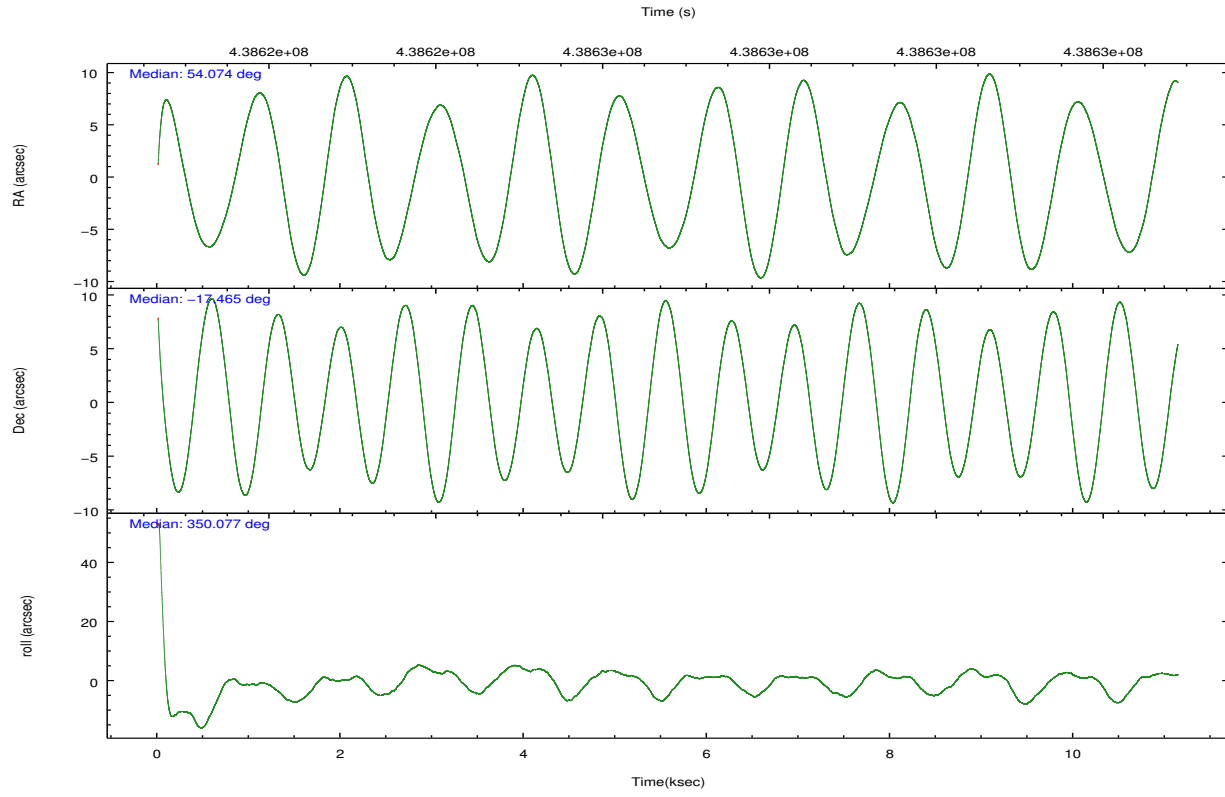
	ccd 3	ccd 5	ccd 6	ccd 7	ccd 8
grade 0 events	2437	9470	2720	3578	6900
	3%	8%	3%	4%	7%
grade 1 events	49	261	39	113	69
	0%	0%	0%	0%	0%
grade 2 events	1528	16333	1859	7875	5684
	2%	14%	2%	9%	6%
grade 3 events	757	1948	844	3472	2512
	1%	1%	1%	3%	2%
grade 4 events	758	1808	816	3461	2332
	1%	1%	1%	3%	2%
grade 5 events	3310	8264	3306	9334	4816
	4%	7%	4%	10%	5%
grade 6 events	1515	27729	1763	20581	6564
	2%	24%	2%	23%	7%
grade 7 events	56039	47180	58101	39085	60748
	84%	41%	83%	44%	67%

2.2 Compared Parameters

Parameter	Planned	Actual	Parameter	Planned	Actual
Instrument	ACIS	ACIS	Obspar format version number	7	7
Detector	ACIS-35678	ACIS-35678	Obspar file type	PREDICTED	ACTUAL
Grating	NONE	NONE	Obspar update status	NONE	UPDATED
Data mode	FAINT	FAINT	CCD I0 on	N	N
Observation mode	POINTING	POINTING	CCD I1 on	N	N
[deg] Pointing RA	54.047862	54.07465547694738	CCD I2 on	N	N
[deg] Pointing Dec	-17.474565	-17.46483937525655	CCD I3 on	O2	Y
[deg] Pointing Roll	349.932484	350.0972461948298	CCD S0 on	N	N
[mm] SIM focus pos	-0.684267	-0.6828225247311905	CCD S1 on	O1	Y
[mm] SIM defocus	0	0.001444936568705701	CCD S2 on	Y	Y
[mm] SIM translation stage pos	-190.132523	-190.145094680475	CCD S3 on	Y	Y
[mm] SIM translation stage offset	0	0.01257209746719923	CCD S4 on	Y	Y
[s] Observation start time (MET)	438621365.184000	438620129.36748	CCD S5 on	N	N
Observation start date	2011-11-25T15:14:59	2011-11-25T14:55:29	Number of optional ACIS chips dropped	0	0
[s] Observation end time (MET)	438632365.184000	438633314.45567	On-chip summing requested	N	N
Observation end date	2011-11-25T18:18:19	2011-11-25T18:35:14	Subarray requested	NONE	NONE
Read mode	TIMED	TIMED	Alternating exposures requested	N	N
			[s] Primary exposure time	0.000000	3.1

2.3 Aspect



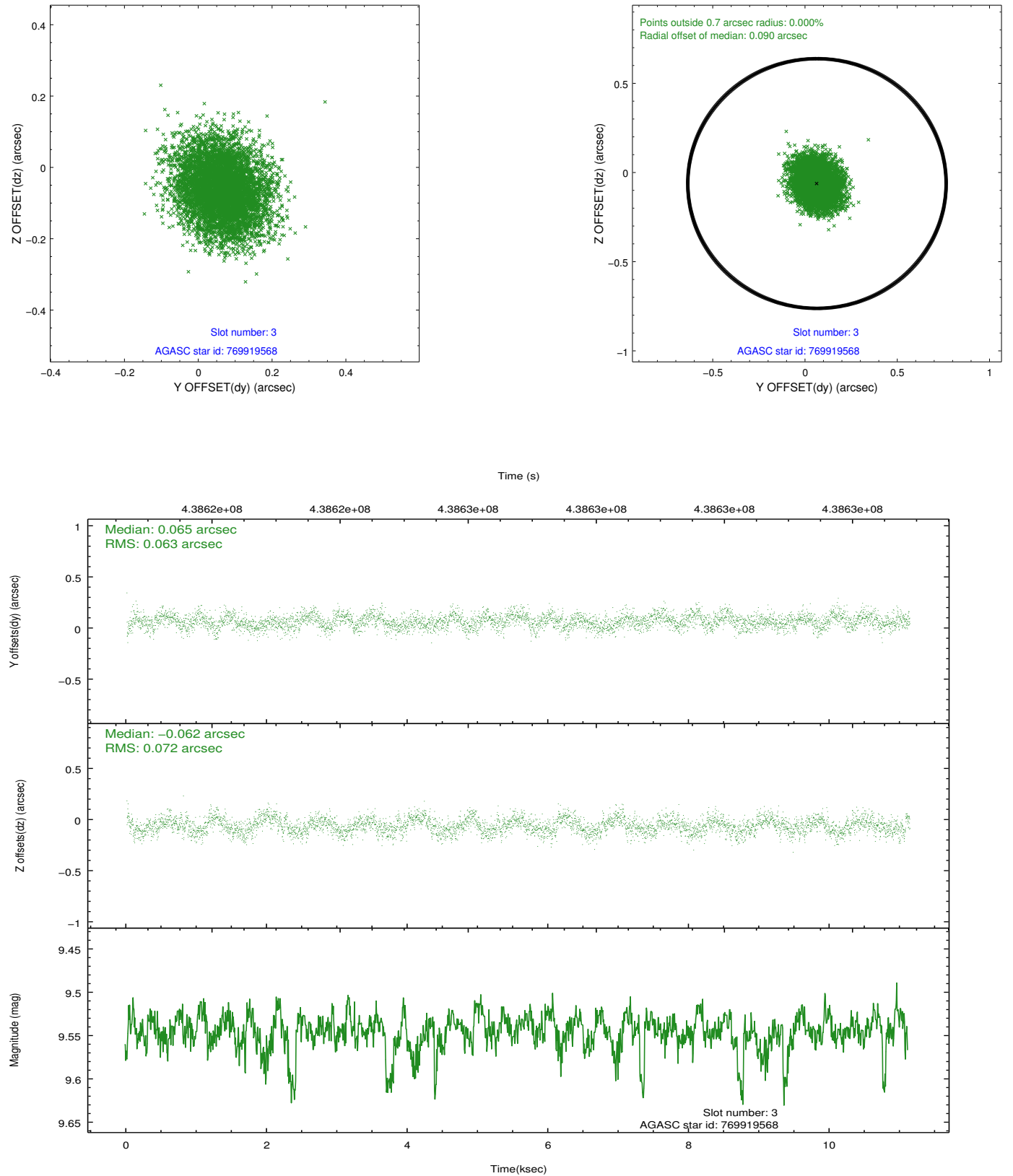


Slot Statistics

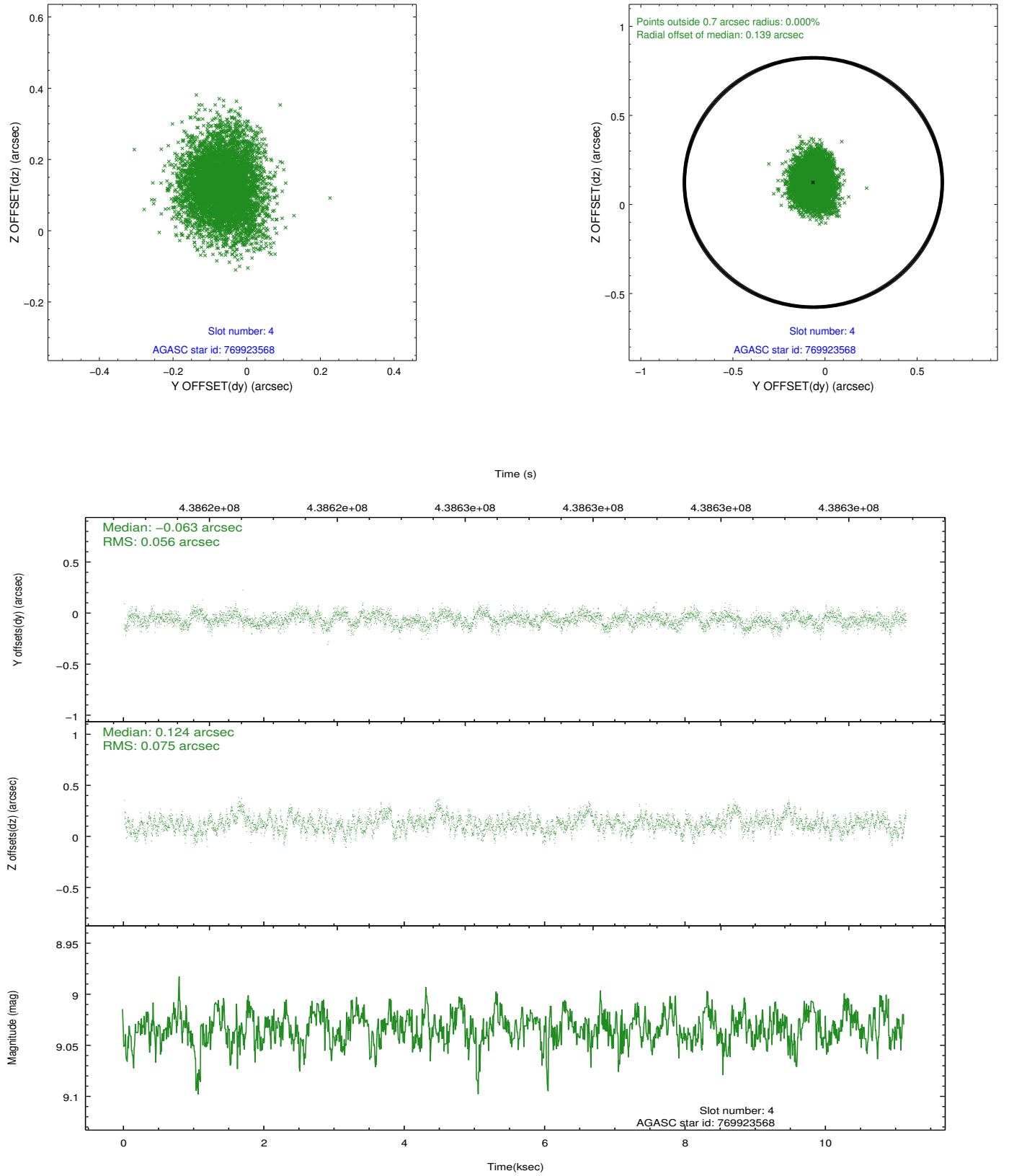
slot	status	id	mag	n_pts	med_dy	med_dz	dr1	dr2	ra	dec	mean_y	mean_z
0	FID	ACIS-S-1	6.98	2716	0.058	-0.062	0.027	0.037	0.000000	0.000000	930.15	-1732.79
1	FID	ACIS-S-4	6.98	2716	0.156	0.019	0.015	0.023	0.000000	0.000000	2147.91	170.97
2	FID	ACIS-S-5	7.01	2716	-0.243	0.055	0.014	0.020	0.000000	0.000000	-1818.44	165.12
3	GUIDE	769919568	9.54	5427	0.065	-0.062	0.103	0.164	53.970487	-17.215828	-424.57	870.44
4	GUIDE	769923568	9.03	5429	-0.063	0.124	0.098	0.164	54.033235	-17.084179	-296.09	1373.90
5	GUIDE	770314608	10.17	5416	-0.253	-0.233	0.276	0.495	53.795790	-17.983840	-528.39	-1956.69
6	GUIDE	770314944	9.96	5428	-0.165	-0.072	0.261	0.401	54.227014	-17.875298	857.26	-1313.45
7	GUIDE	770315376	10.03	5424	0.404	0.252	0.183	0.285	54.492149	-17.660305	1618.95	-393.03

2.4 Star Slots

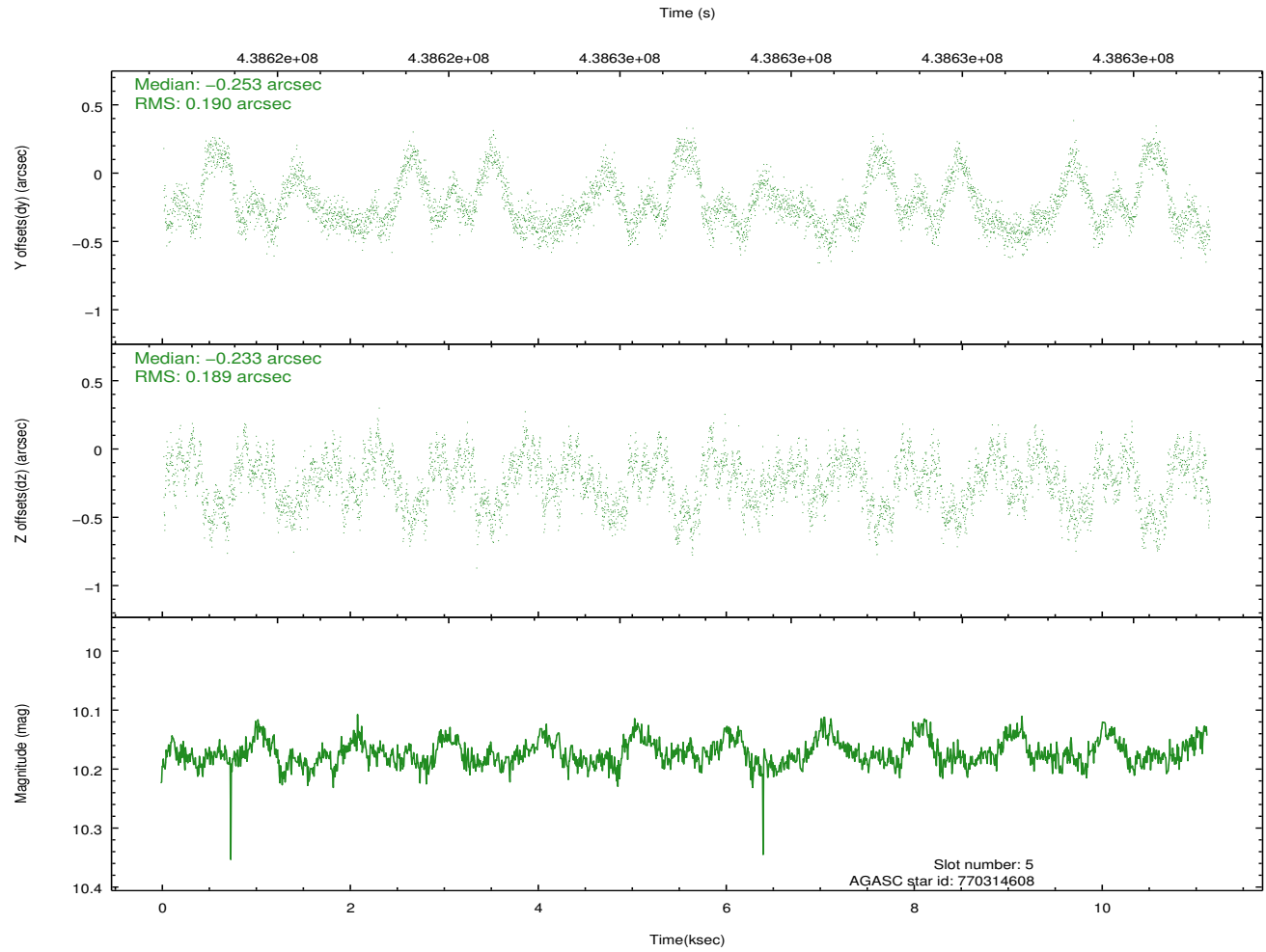
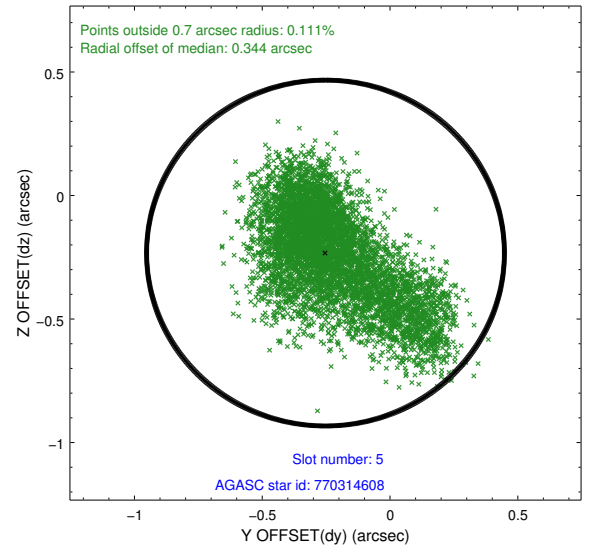
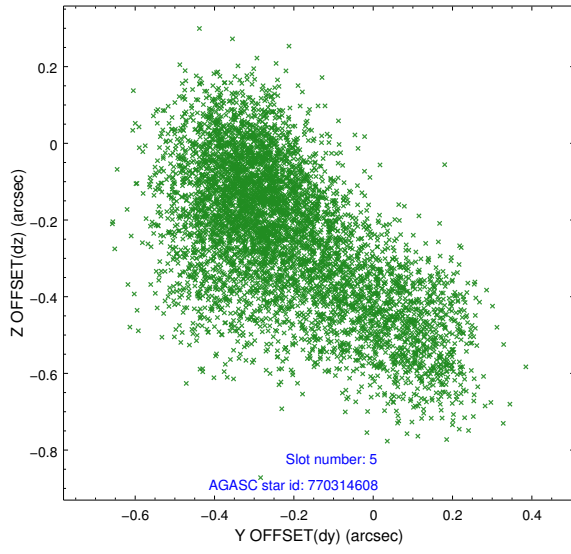
2.4.1 Slot 3



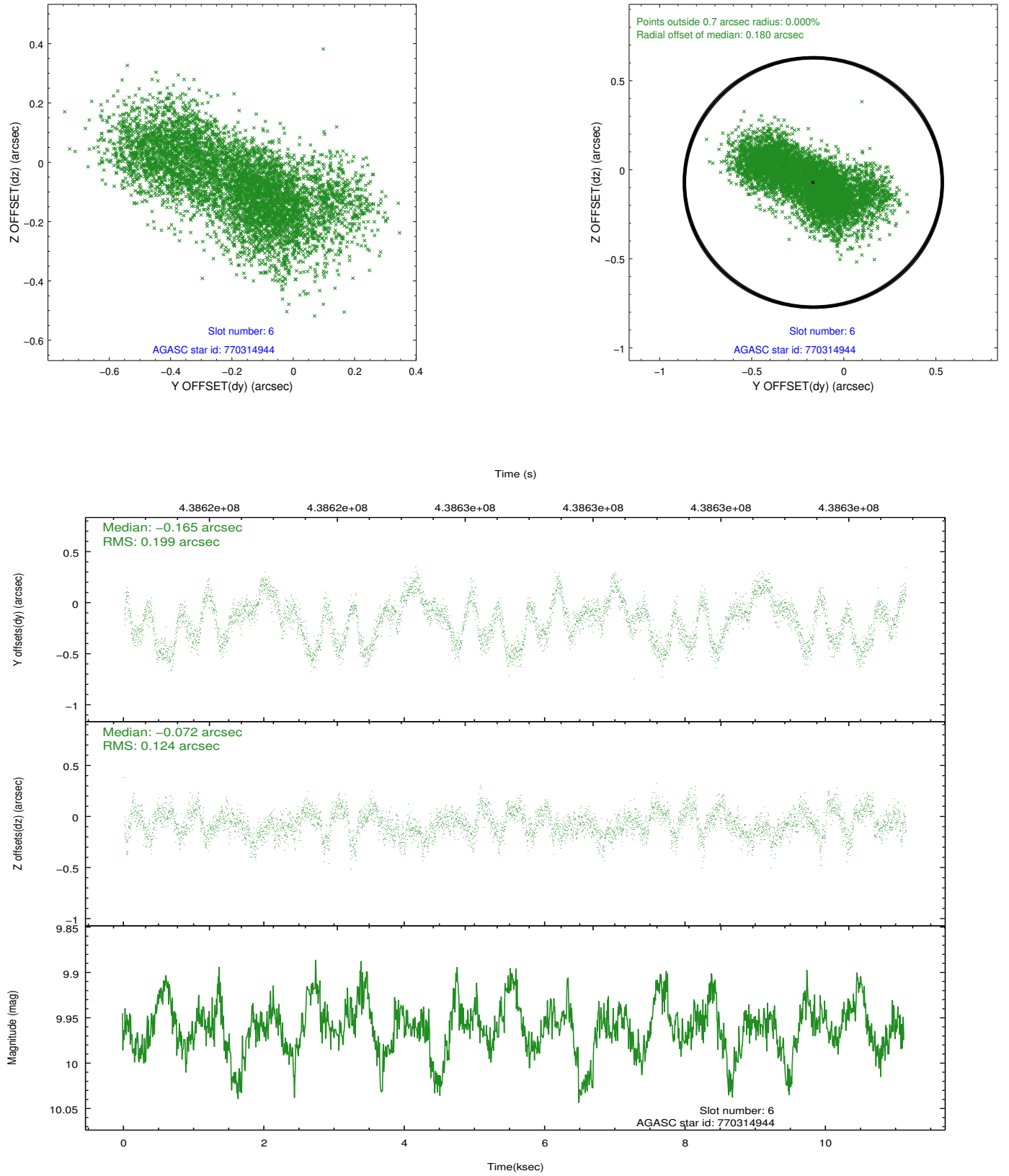
2.4.2 Slot 4



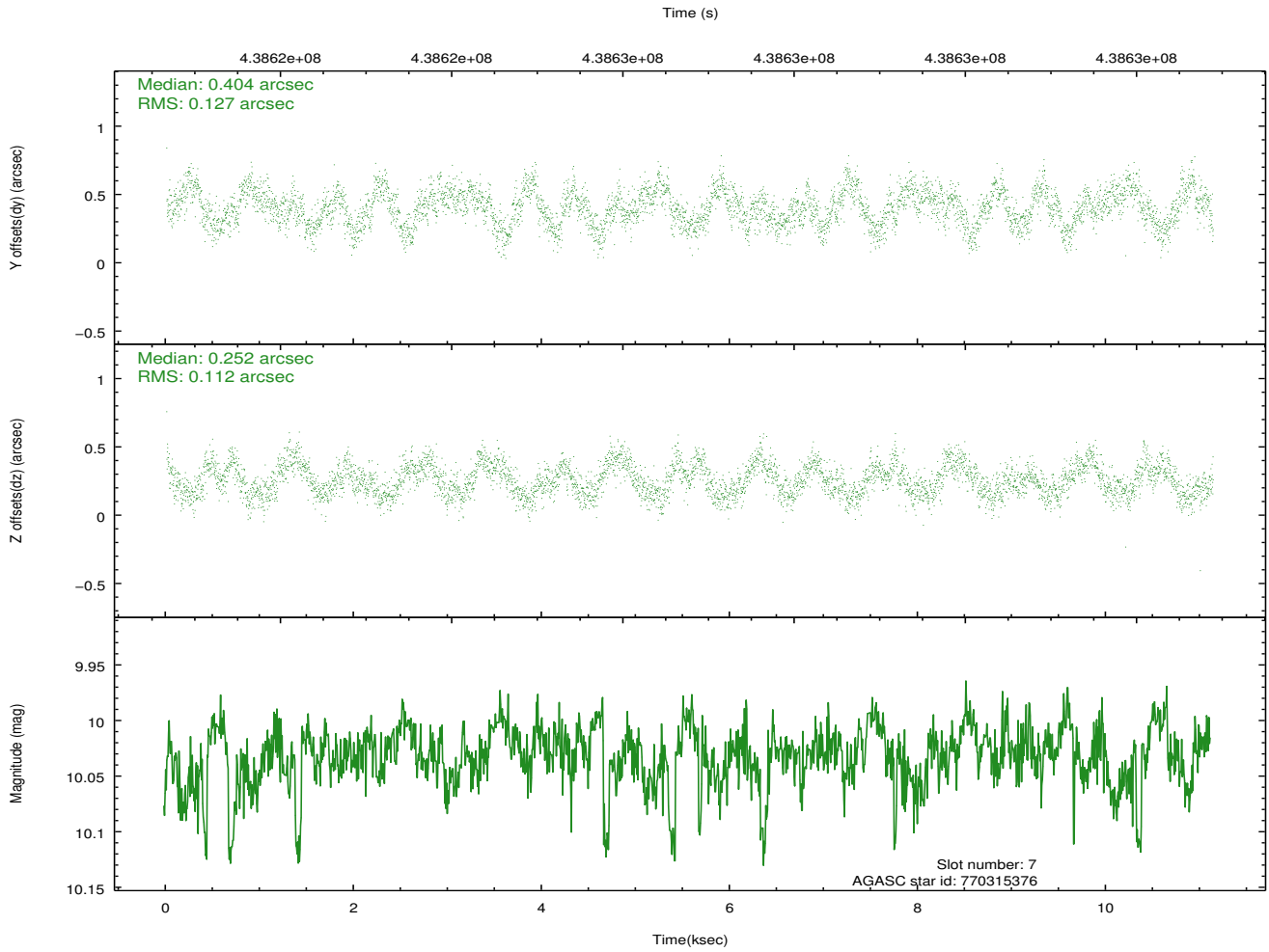
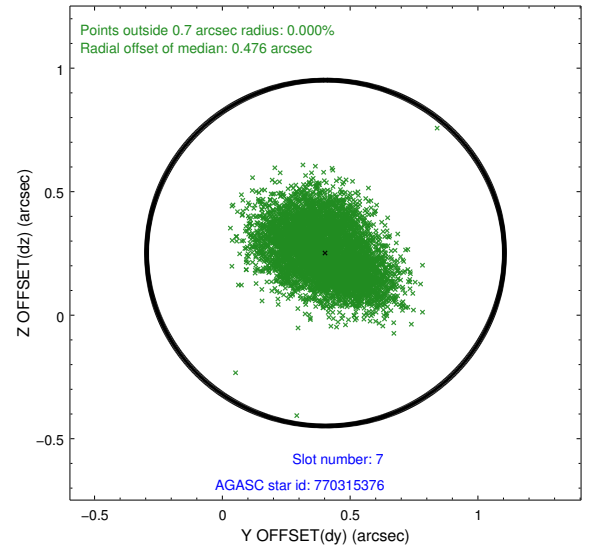
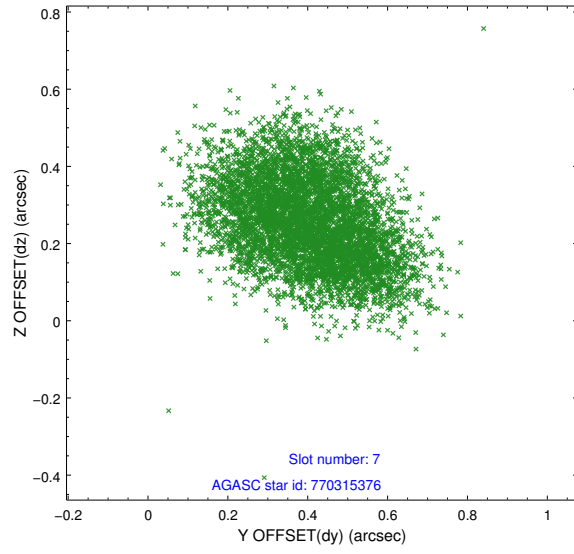
2.4.3 Slot 5



2.4.4 Slot 6

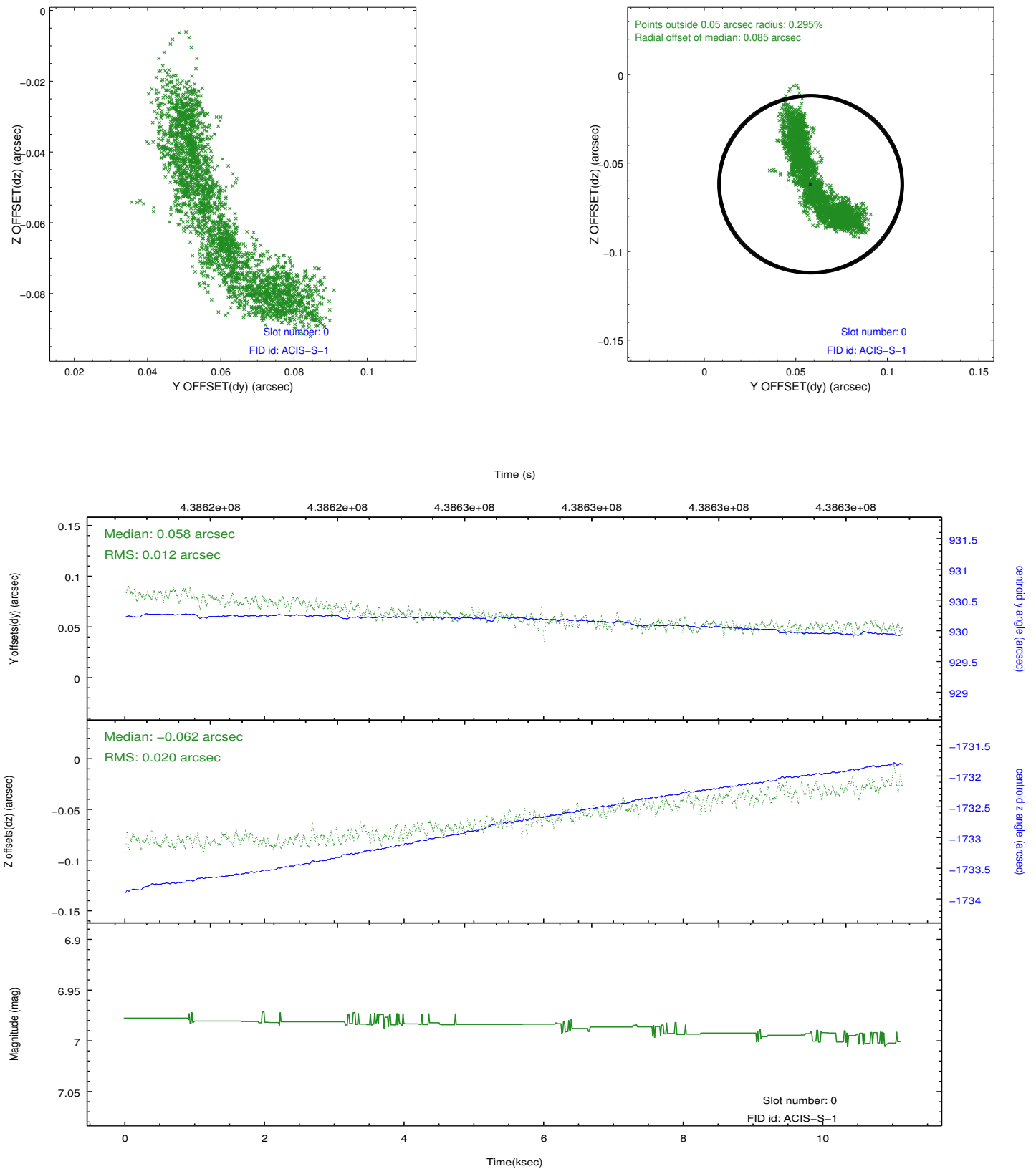


2.4.5 Slot 7

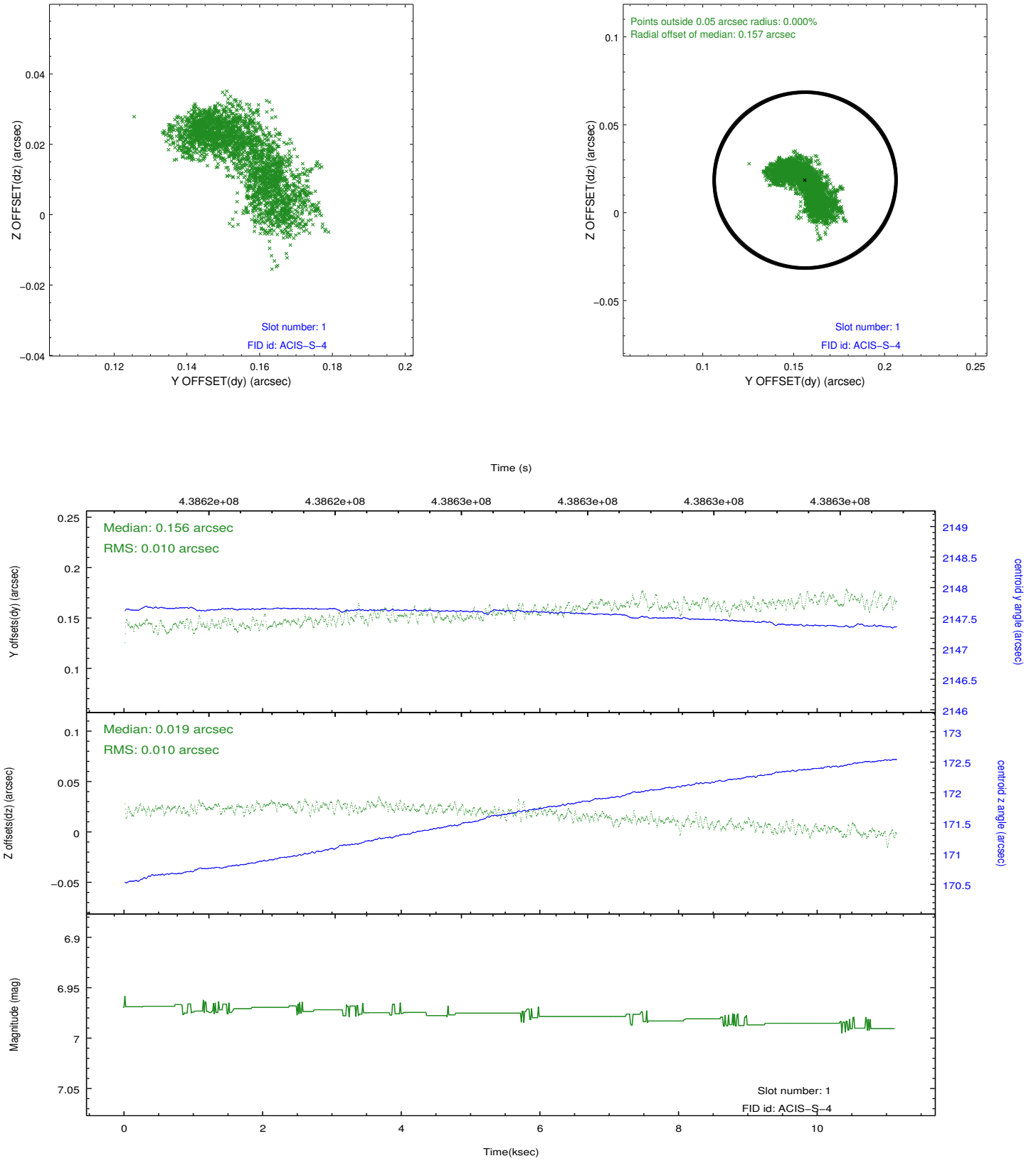


2.5 FID Slots

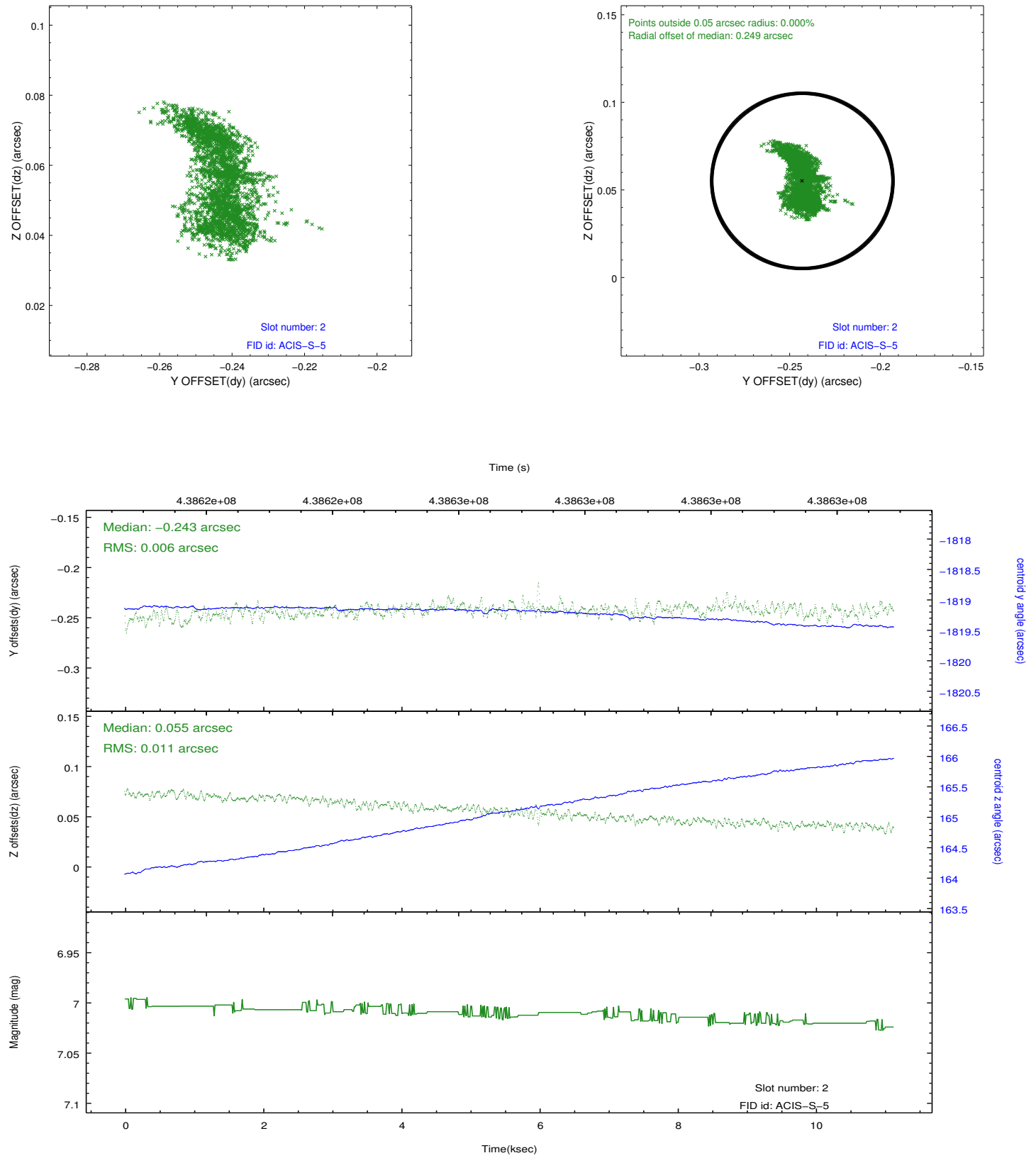
2.5.1 Slot 0



2.5.2 Slot 1



2.5.3 Slot 2



A Summary

A.1 Status

V&V Scientist	Beth Sundheim
V&V Date (YYYY-MM-DD)	2012.02.27
V&V Edition	1
V&V Disposition and Status	OK
V&V Charge Time	11.042200084925

A.2 Comments