

# V&V Reference Report

## L2 ASCDS Version : 8.4.5

Observation 13005 - L2 Version 1  
Chandra X-Ray Center

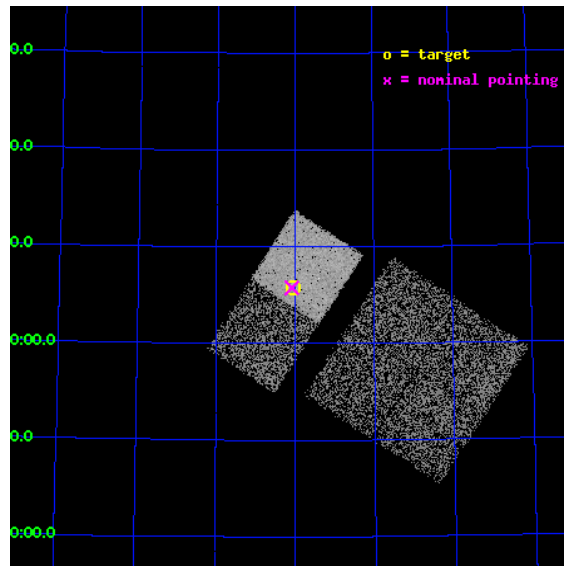
L2 Processing Date : Jun 13 2012

## Contents

<b>1</b>	<b>Front</b>	<b>2</b>
<b>2</b>	<b>OBI</b>	<b>3</b>
2.1	OBI . . . . .	3
2.1.1	Images . . . . .	3
2.1.2	Bias . . . . .	3
2.1.3	Parameters . . . . .	4
2.1.4	Events . . . . .	4
2.2	Compared Parameters . . . . .	5
2.3	Aspect . . . . .	6
2.4	Star Slots . . . . .	9
2.4.1	Slot 3 . . . . .	9
2.4.2	Slot 4 . . . . .	10
2.4.3	Slot 5 . . . . .	11
2.4.4	Slot 6 . . . . .	12
2.4.5	Slot 7 . . . . .	13
2.5	FID Slots . . . . .	14
2.5.1	Slot 0 . . . . .	14
2.5.2	Slot 1 . . . . .	15
2.5.3	Slot 2 . . . . .	16
<b>A</b>	<b>Summary</b>	<b>17</b>
A.1	Status . . . . .	17
A.2	Comments . . . . .	17

# 1 Front

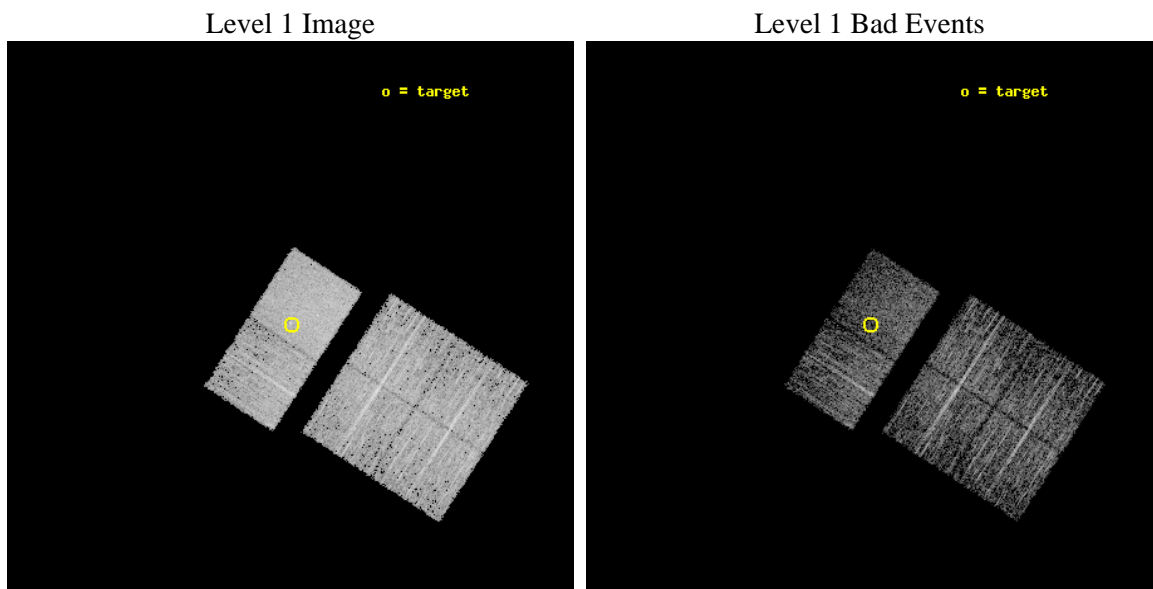
seq_num	600969	Sequence number
obs_id	13005	Observation id
title	The brightest ultraluminous X-ray sources across the sky	Proposal
observer	Dr Jifeng Liu	Principal investigator
object	J084802.2+740546	Source name
dtcycle	0	&#160
cycle	P	events from which exps? Prim/Second/Both
ra_targ	132.009167	Observer's specified target RA [deg]
dec_targ	74.096111	Observer's specified target Dec [deg]
ra_nom	132.02049408398	Nominal RA [deg]
dec_nom	74.09619112214	Nominal Dec [deg]
roll_nom	302.94294194337	Nominal Roll [deg]
revision	1	Processing version of data
ontime	4969.5999815464	Sum of GTIs [s]
livetime	4906.6719142462	Livetime [s]
ontime0	4966.3590311408	Sum of GTIs [s]
ontime1	4969.5999815464	Sum of GTIs [s]
ontime2	4969.5999815464	Sum of GTIs [s]
ontime3	4969.5999815464	Sum of GTIs [s]
ontime6	4969.5999815464	Sum of GTIs [s]
ontime7	4969.5999815464	Sum of GTIs [s]
l2events	31009	Number of level 2 events



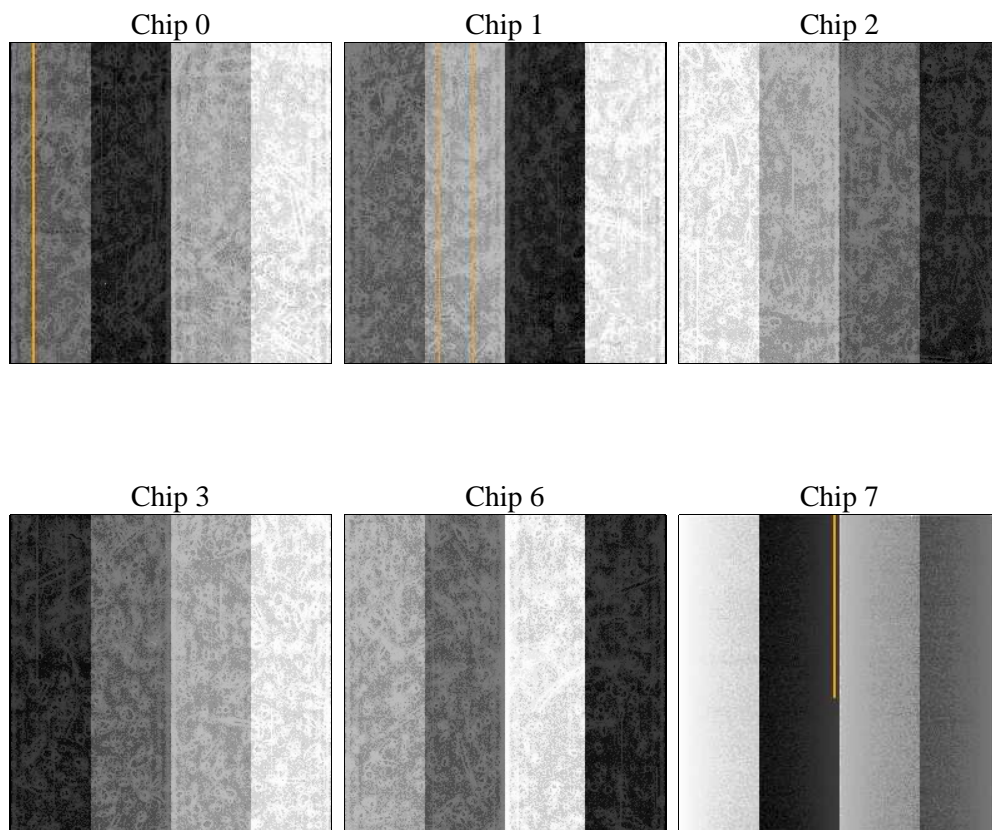
## 2 OBI

### 2.1 OBI

#### 2.1.1 Images



#### 2.1.2 Bias



### 2.1.3 Parameters

obi_num	2	Obi number	sched_exp_time	5000.000000	[s] Scheduled observation exposure time
ascdsver	8.4.5	Processing system revision	ontime	4969.5999815464	Sum of GTIs [s]
caldbver	4.4.10	&#160	ontime0	4966.3590311408	Sum of GTIs [s]
date	2012-06-13T19:39:47	Date and time of file creation	ontime1	4969.5999815464	Sum of GTIs [s]
revision	1	Processing version of data	ontime2	4969.5999815464	Sum of GTIs [s]
			ontime3	4969.5999815464	Sum of GTIs [s]
			ontime6	4969.5999815464	Sum of GTIs [s]
			ontime7	4969.5999815464	Sum of GTIs [s]
			l1events	177958	Number of level 1 events

### 2.1.4 Events

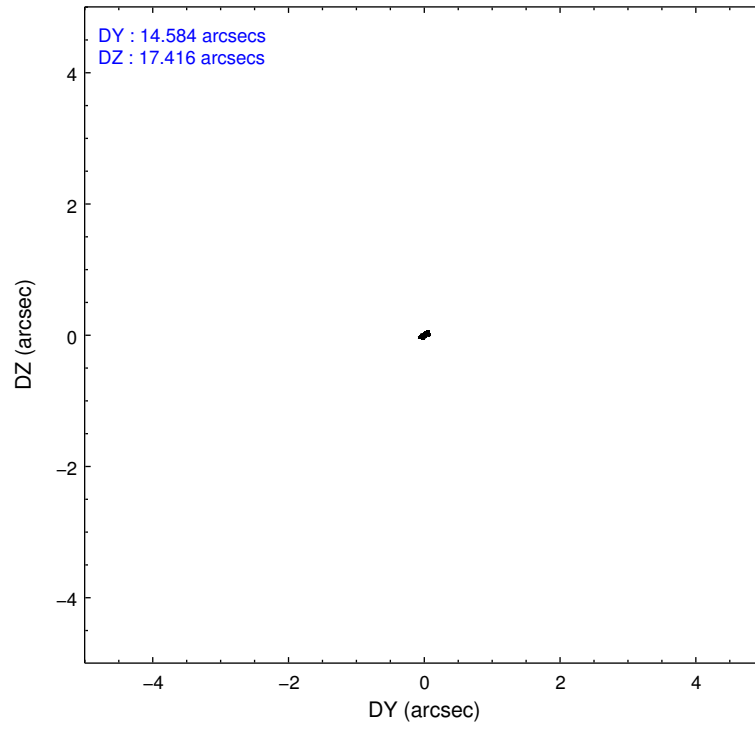
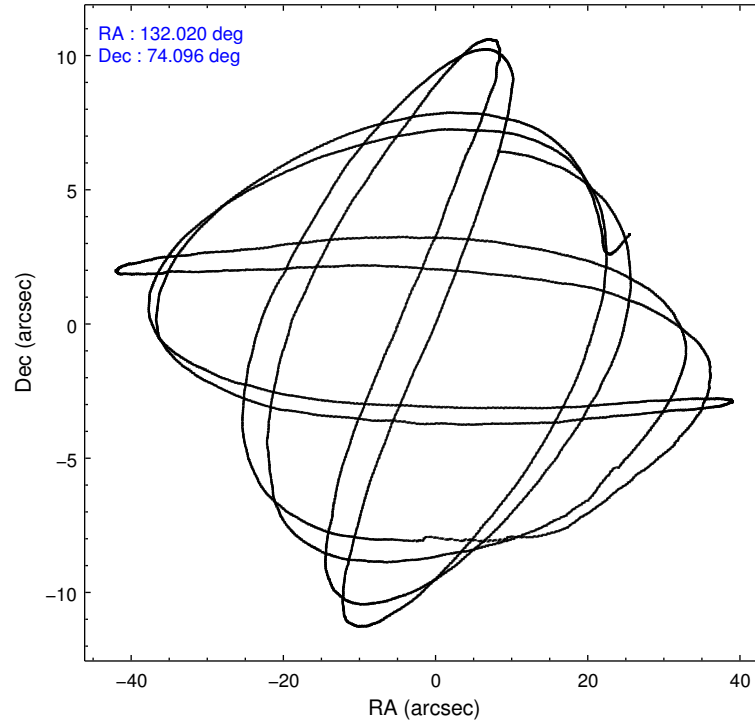
	ccd 0	ccd 1	ccd 2	ccd 3	ccd 6	ccd 7		ccd 0	ccd 1	ccd 2	ccd 3	ccd 6	ccd 7
level 1 events	27849	26523	27602	29486	28229	38269	grade 0 events	1141	1227	1092	1119	1206	1638
rejected events	24392	22885	24461	26313	24762	21072		4%	4%	3%	3%	4%	4%
rejected %	87%	86%	88%	89%	87%	55%	grade 1 events	18	13	16	8	18	51
								0%	0%	0%	0%	0%	0%
							grade 2 events	952	898	759	697	805	3574
								3%	3%	2%	2%	2%	9%
							grade 3 events	367	332	324	318	374	1495
								1%	1%	1%	1%	1%	3%
							grade 4 events	294	388	341	358	306	1430
								1%	1%	1%	1%	1%	3%
							grade 5 events	1299	1298	1218	1460	1526	3868
								4%	4%	4%	4%	5%	10%
							grade 6 events	708	796	628	685	778	9069
								2%	3%	2%	2%	2%	23%
							grade 7 events	23070	21571	23224	24841	23216	17144
								82%	81%	84%	84%	82%	44%

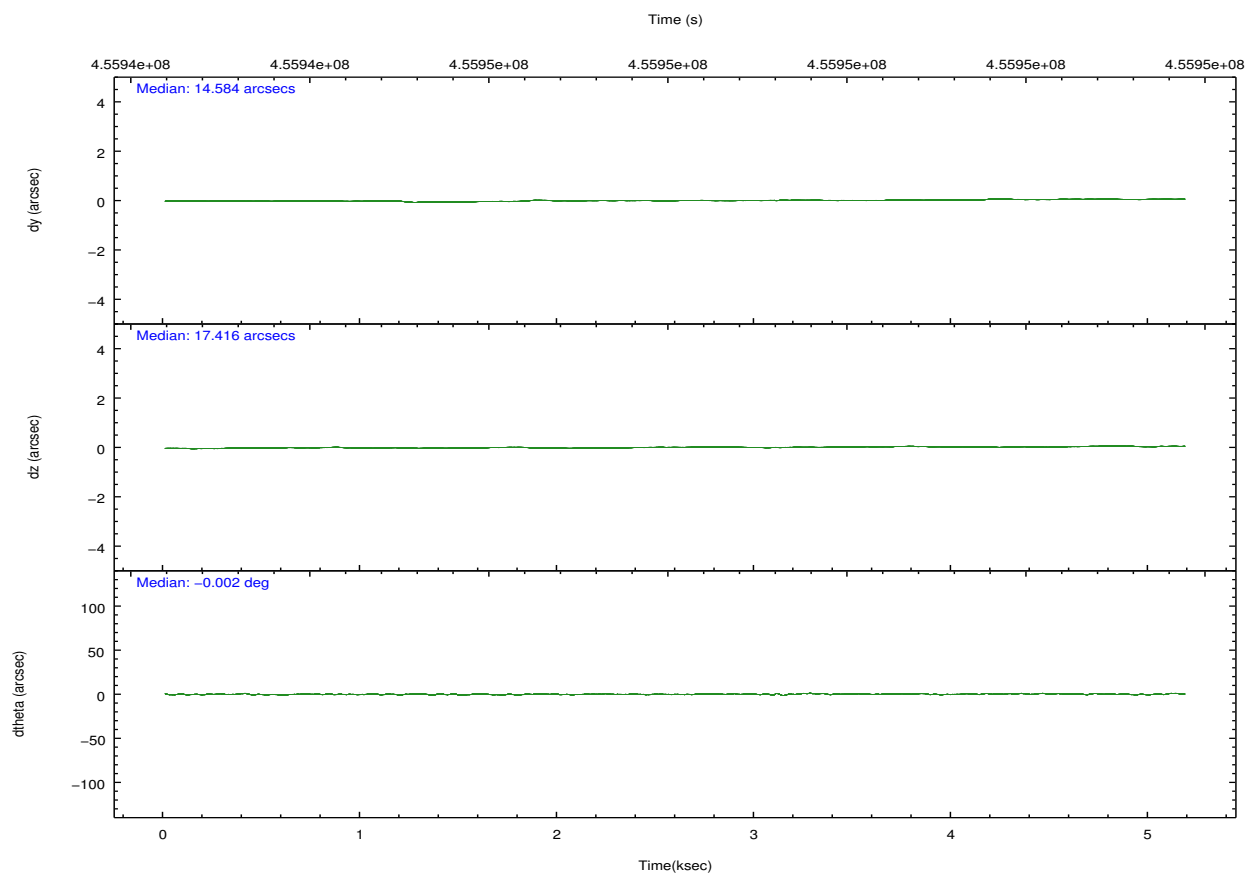
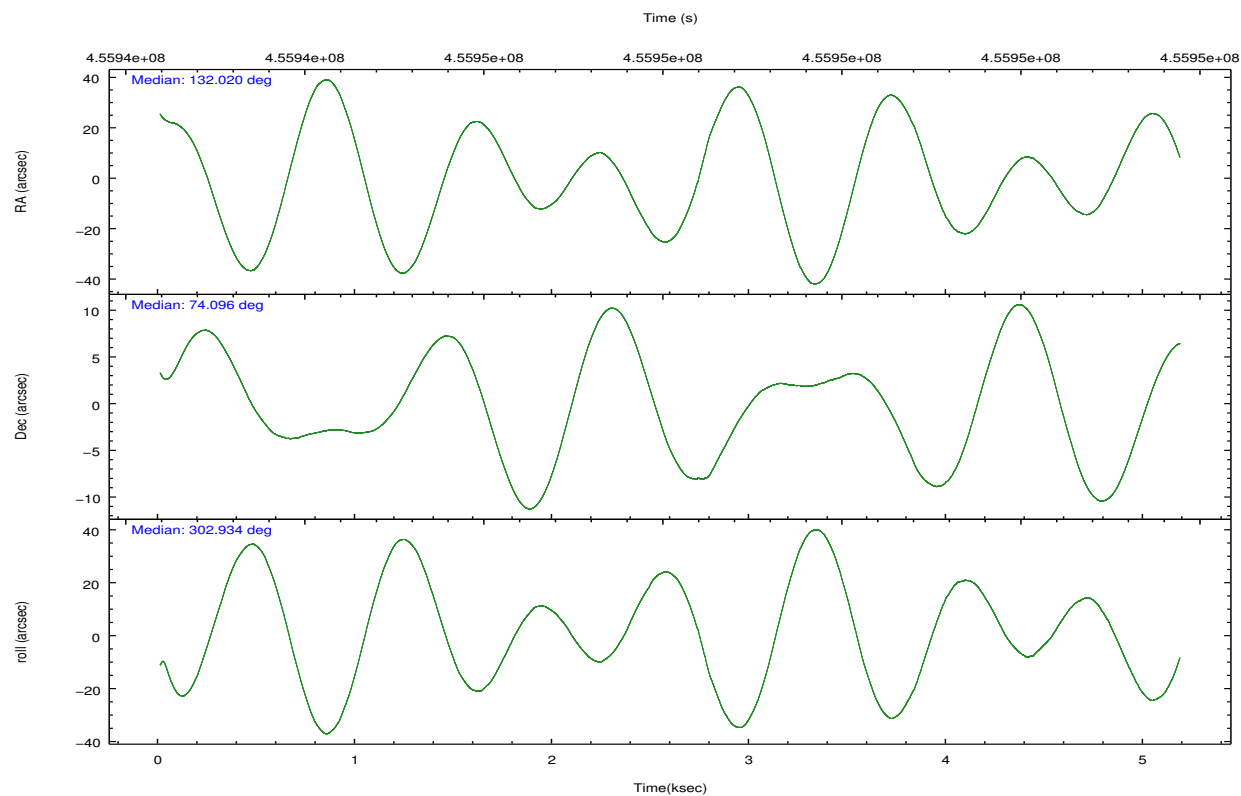


## 2.2 Compared Parameters

Parameter	Planned	Actual	Parameter	Planned	Actual
Instrument	ACIS	ACIS	Obspar format version number	7	7
Detector	ACIS-012367	ACIS-012367	Obspar file type	PREDICTED	ACTUAL
Grating	NONE	NONE	Obspar update status	NONE	UPDATED
Data mode	FAINT	FAINT	Number of optional ACIS chips dropped	0	0
Observation mode	POINTING	POINTING	On-chip summing requested	N	N
[deg] Pointing RA	131.930694	132.0204940839836	Subarray requested	NONE	NONE
[deg] Pointing Dec	74.108213	74.09619112213994	Alternating exposures requested	N	N
[deg] Pointing Roll	302.872651	302.9429419433657	[s] Primary exposure time	0.000000	3.2
[mm] SIM focus pos	-0.684267	-0.6828225247311905			
[mm] SIM defocus	0	0.001444936568705701			
[mm] SIM translation stage pos	-190.132523	-190.1400660498719			
[mm] SIM translation stage offset	0	0.00754346686406393			
[s] Observation start time (MET)	455944639.184000	455943594.80649			
Observation start date	2012-06-13T03:16:13	2012-06-13T02:59:54			
[s] Observation end time (MET)	455949639.184000	455950384.91935			
Observation end date	2012-06-13T04:39:33	2012-06-13T04:53:04			
Read mode	TIMED	TIMED			

## 2.3 Aspect



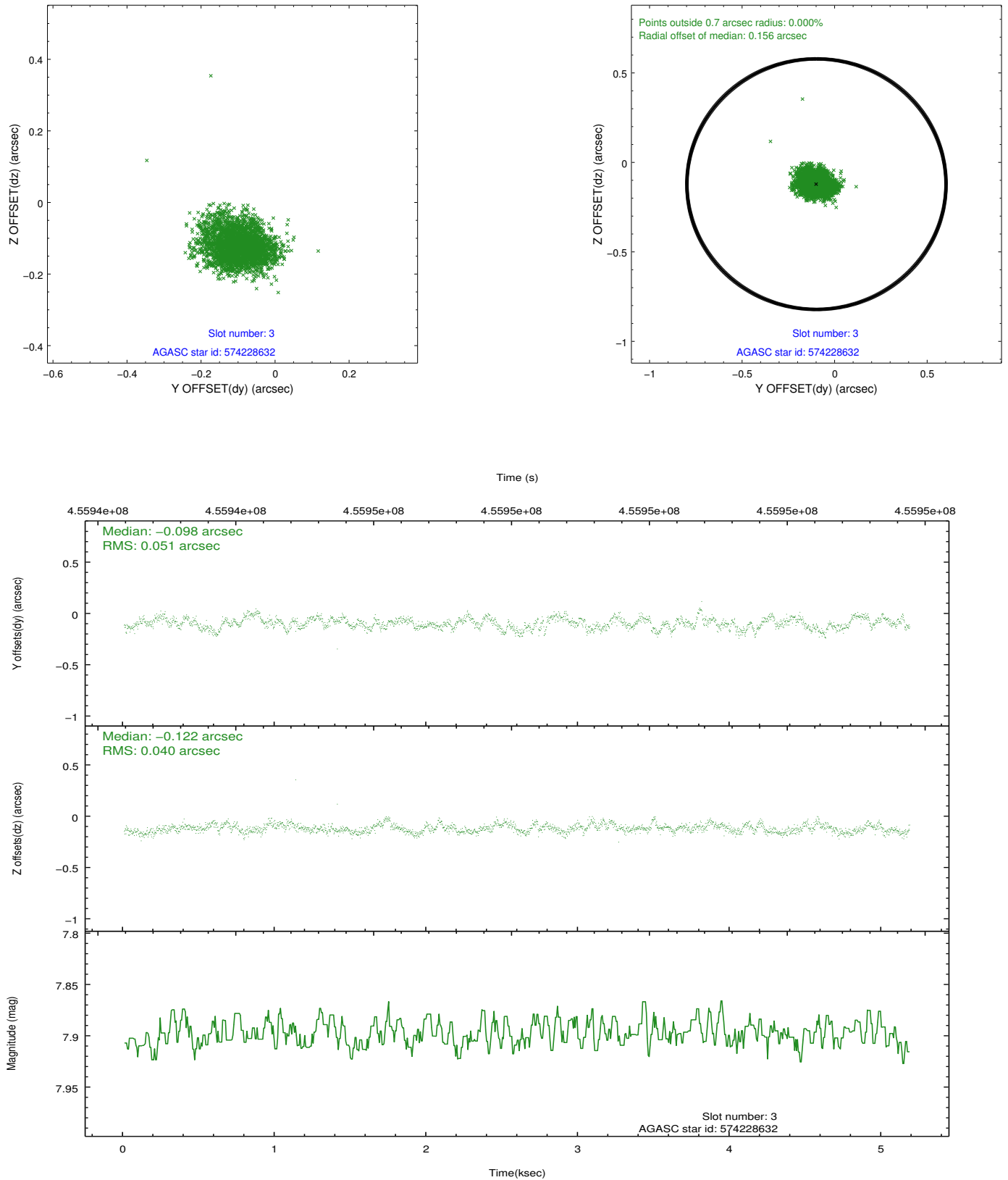


### Slot Statistics

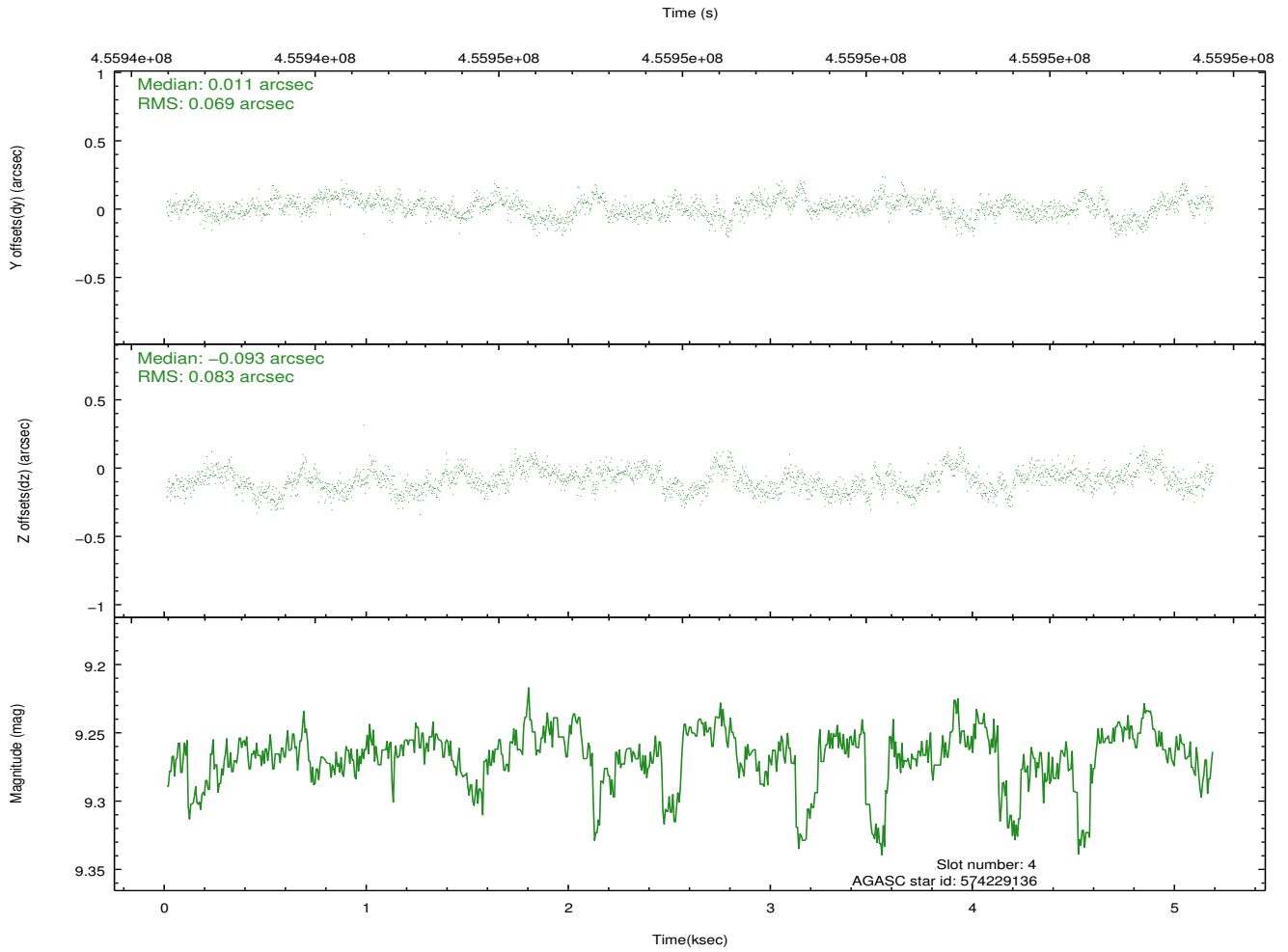
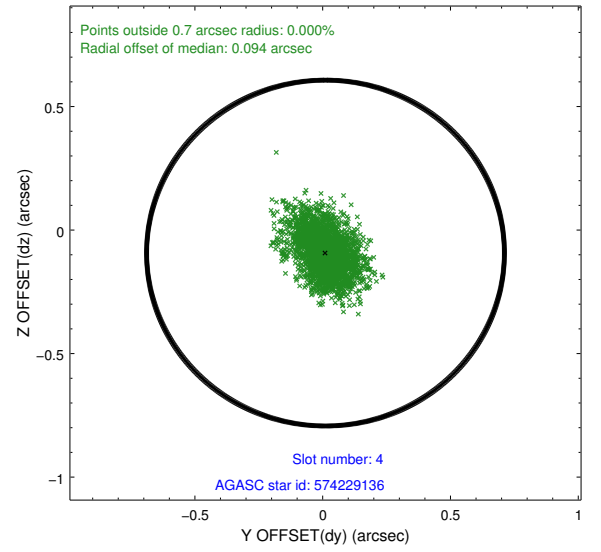
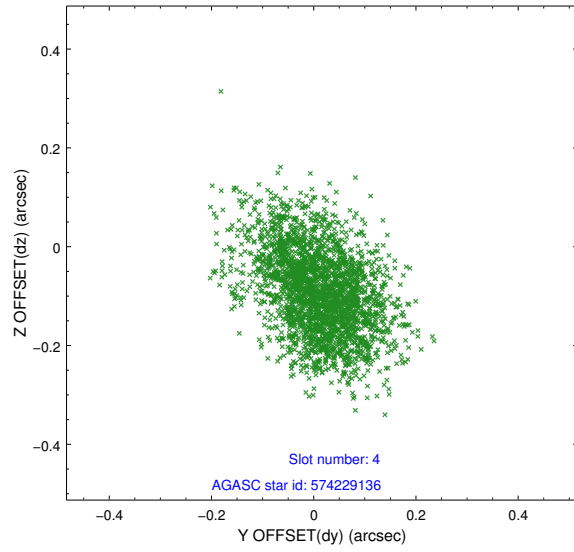
slot	status	id	mag	n_pts	med_dy	med_dz	dr1	dr2	ra	dec	mean_y	mean_z
0	FID	ACIS-S-2	6.90	1262	-0.084	-0.057	0.006	0.010	0.000000	0.000000	-767.68	-1738.89
1	FID	ACIS-S-4	6.98	1263	0.262	0.056	0.005	0.010	0.000000	0.000000	2145.46	168.40
2	FID	ACIS-S-5	7.01	1263	-0.209	0.009	0.006	0.011	0.000000	0.000000	-1819.09	163.47
3	GUIDE	574228632	7.90	2526	-0.098	-0.122	0.068	0.110	133.277140	74.547685	-640.19	1950.31
4	GUIDE	574229136	9.27	2526	0.011	-0.093	0.114	0.187	133.110848	74.718070	-1245.49	2138.77
5	GUIDE	574229296	8.81	2526	0.046	0.337	0.107	0.167	131.253953	74.317140	-992.42	-141.99
6	GUIDE	574233256	8.24	2527	-0.026	-0.061	0.070	0.112	134.287986	73.999922	1557.39	1777.00
7	GUIDE	574236128	7.82	2524	0.067	-0.060	0.086	0.148	131.486683	73.292556	2216.70	-1978.05

## 2.4 Star Slots

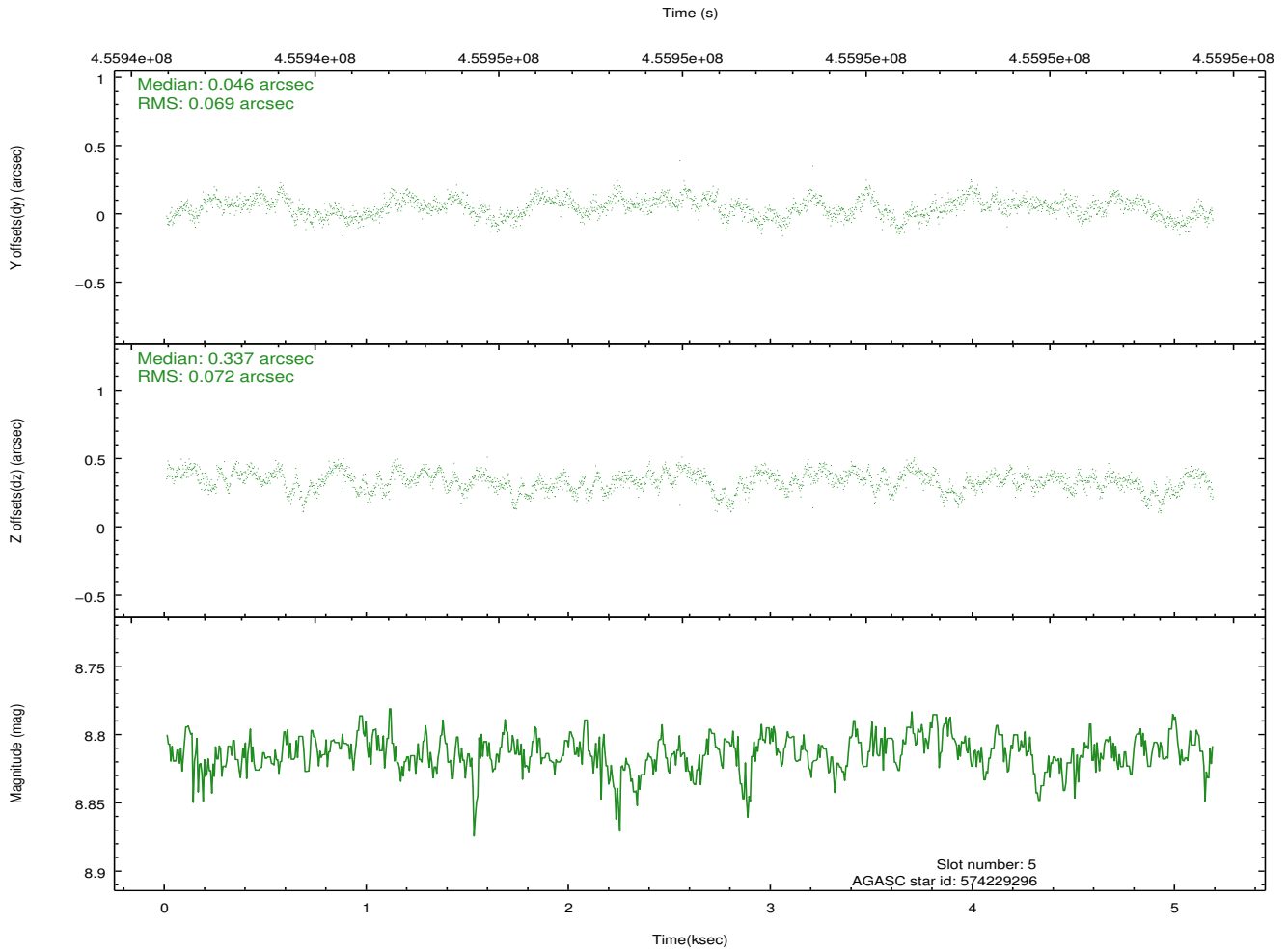
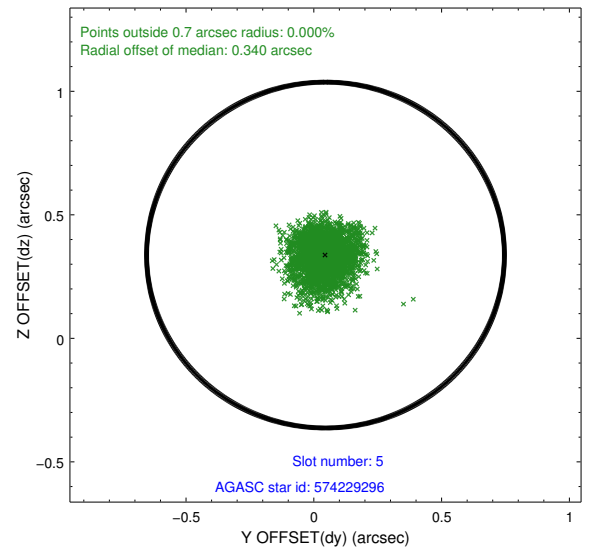
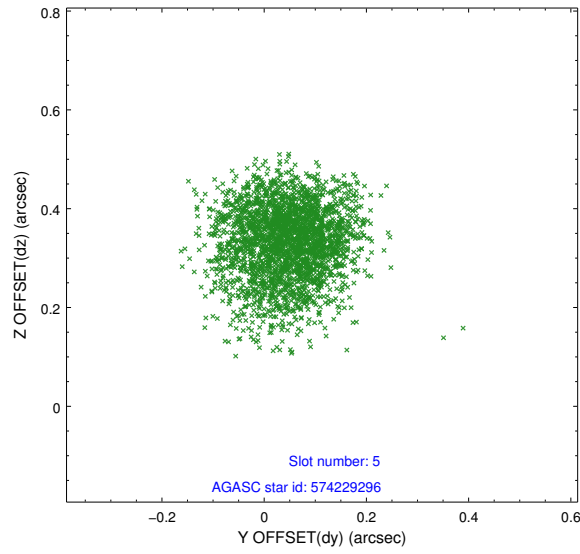
### 2.4.1 Slot 3



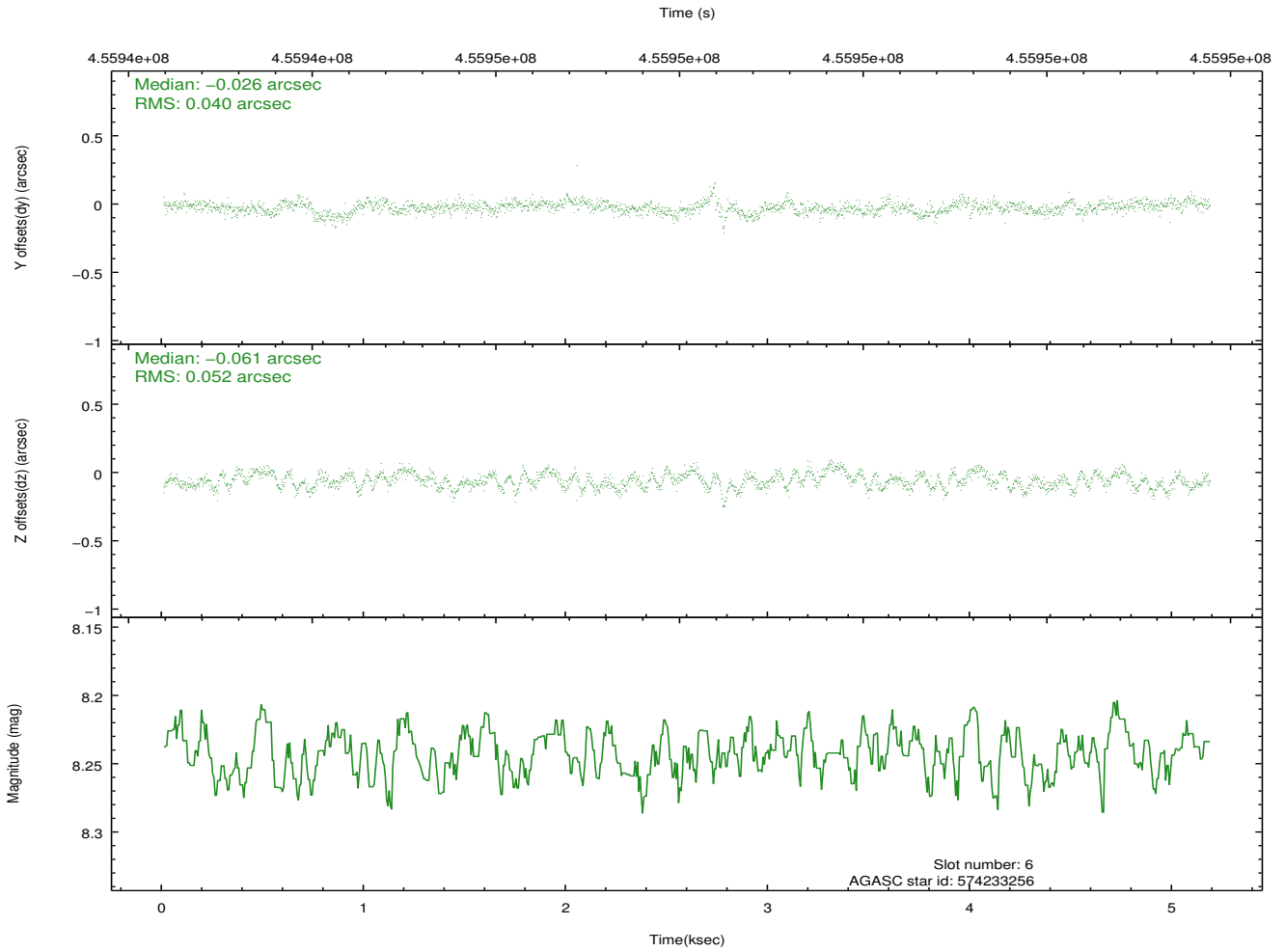
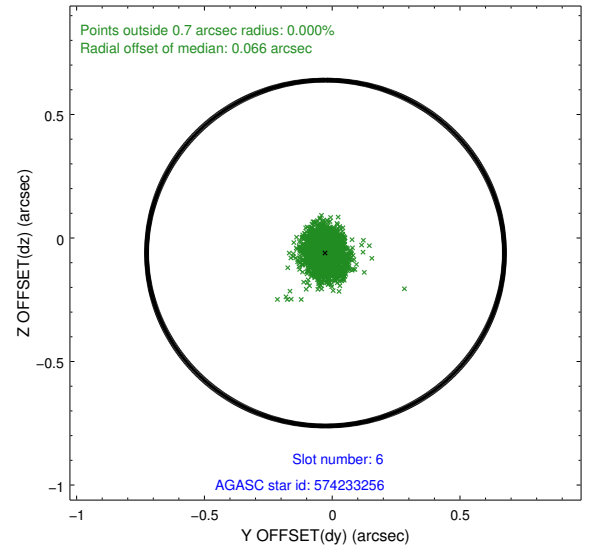
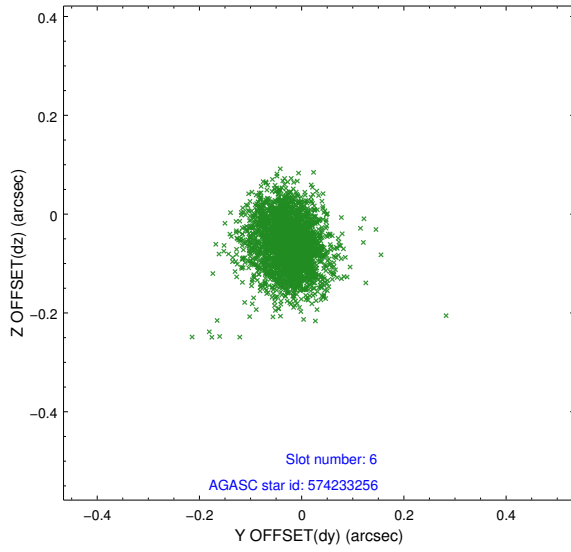
## 2.4.2 Slot 4



### 2.4.3 Slot 5

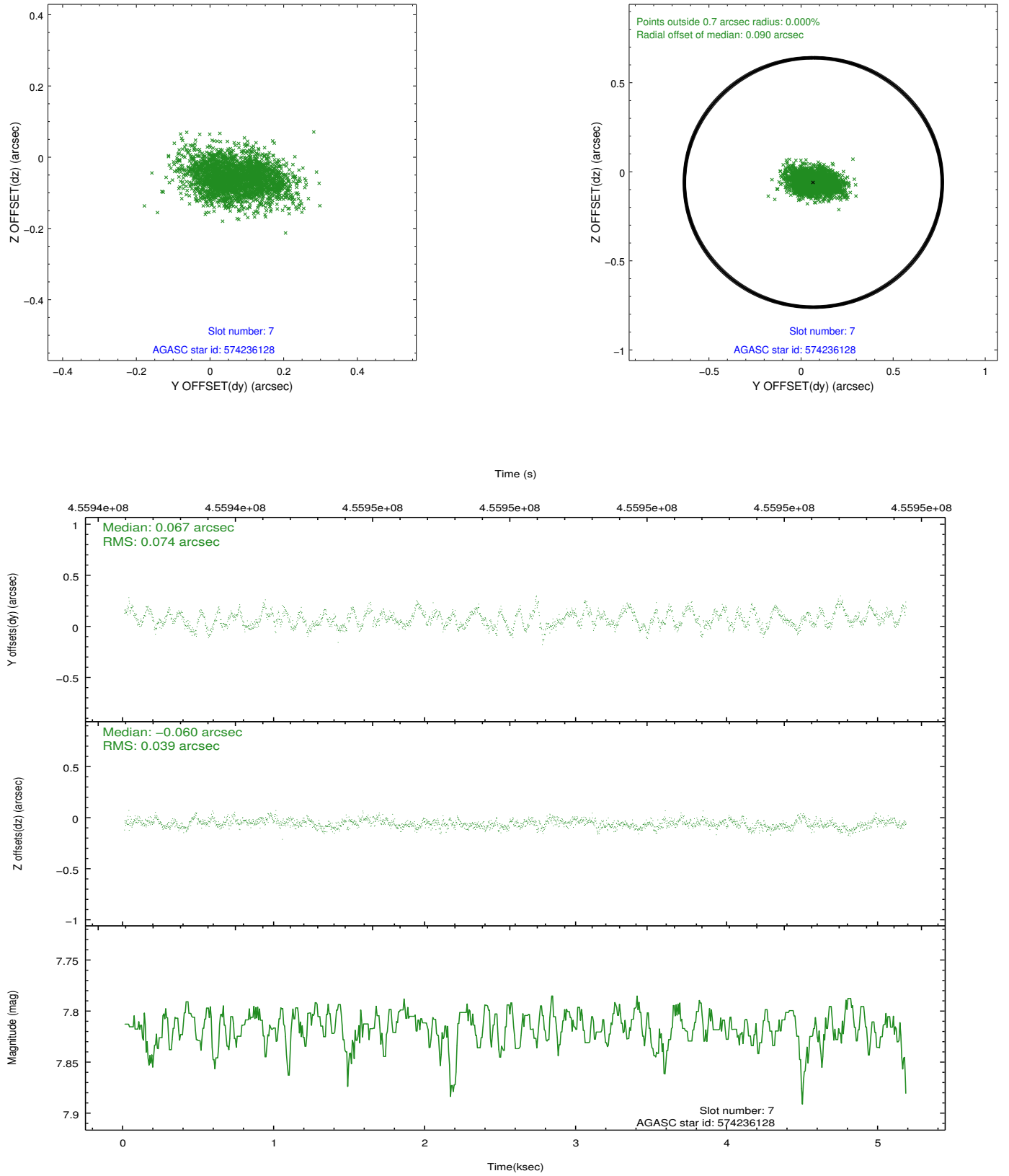


## 2.4.4 Slot 6



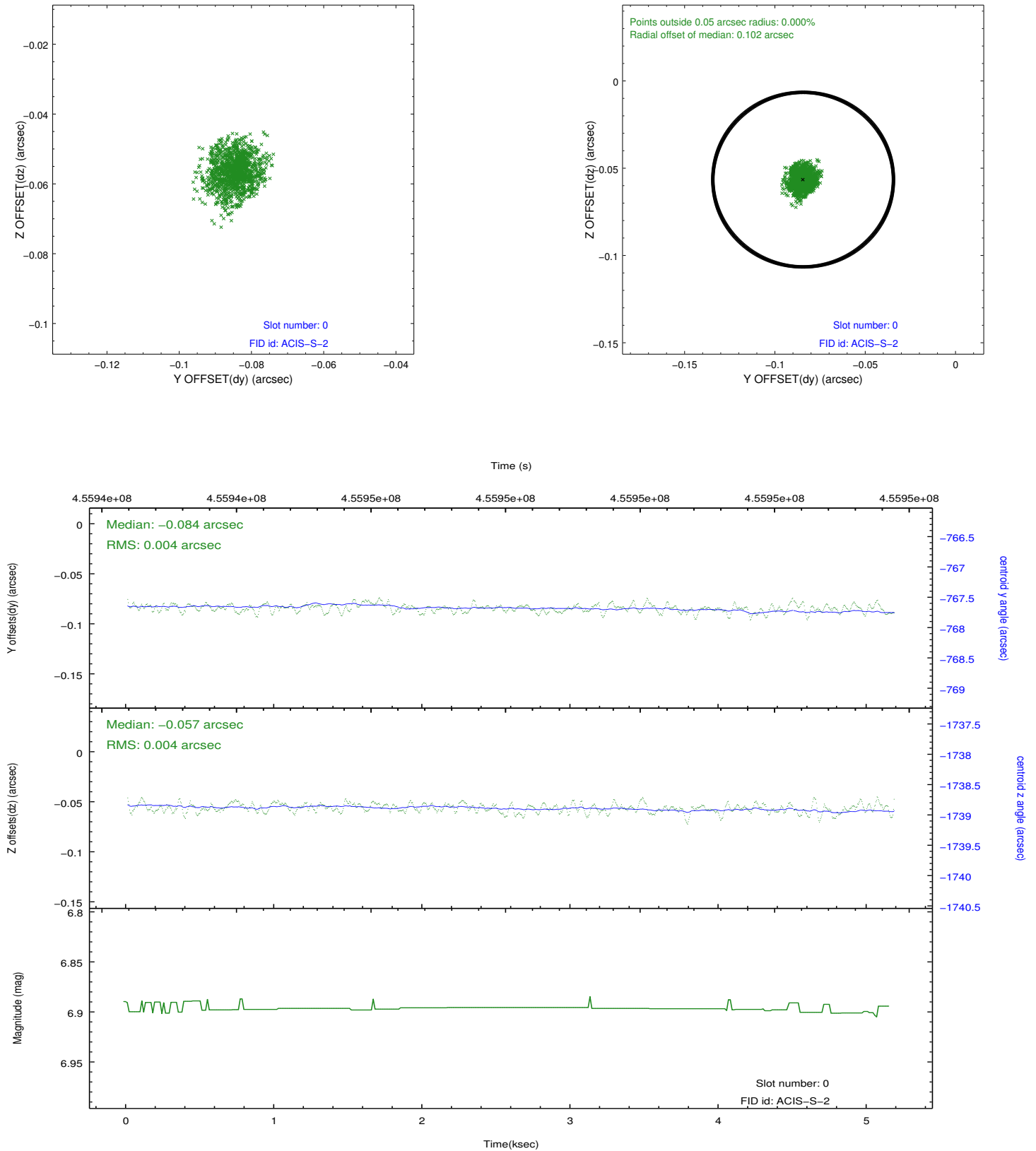


## 2.4.5 Slot 7

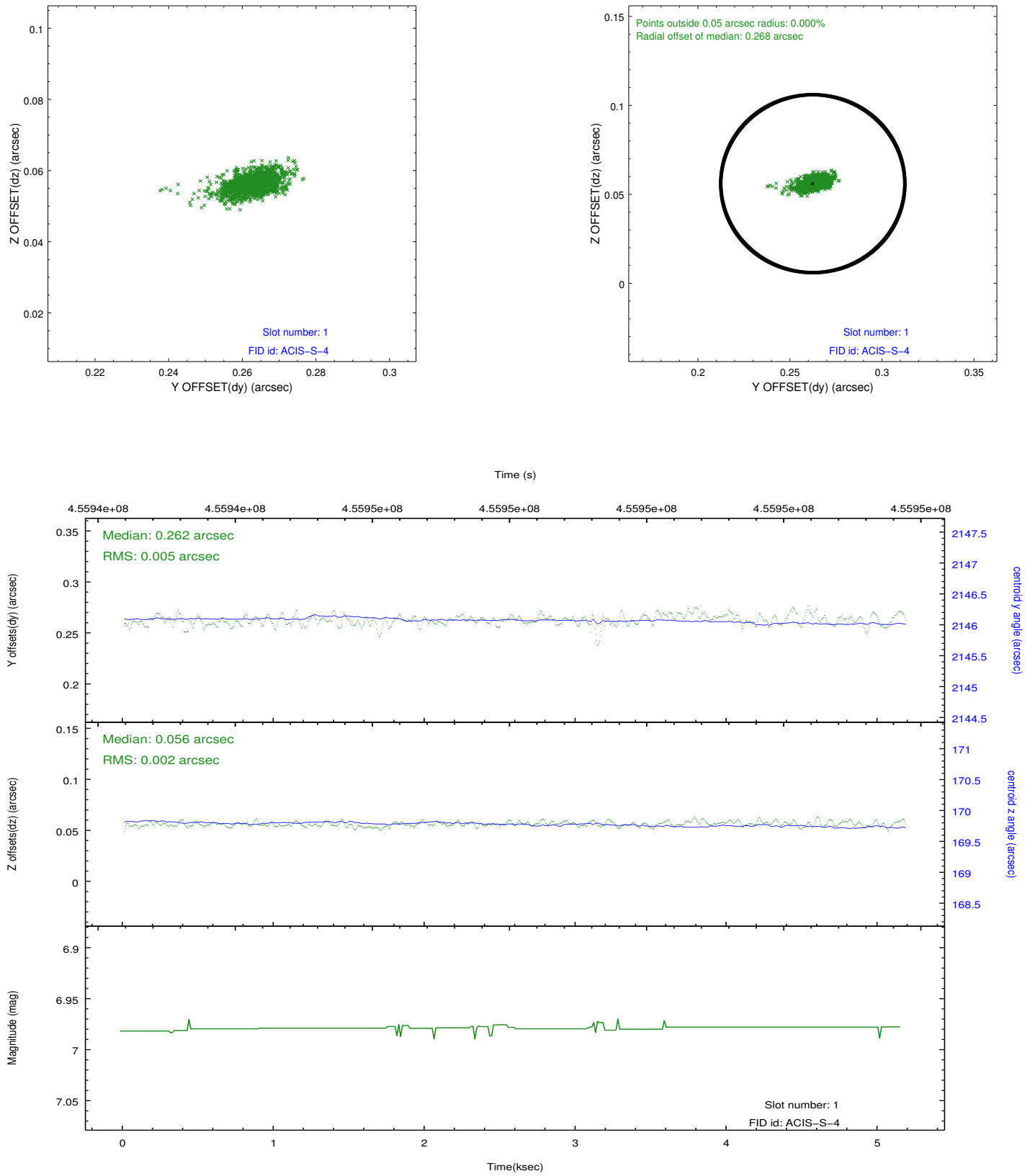


## 2.5 FID Slots

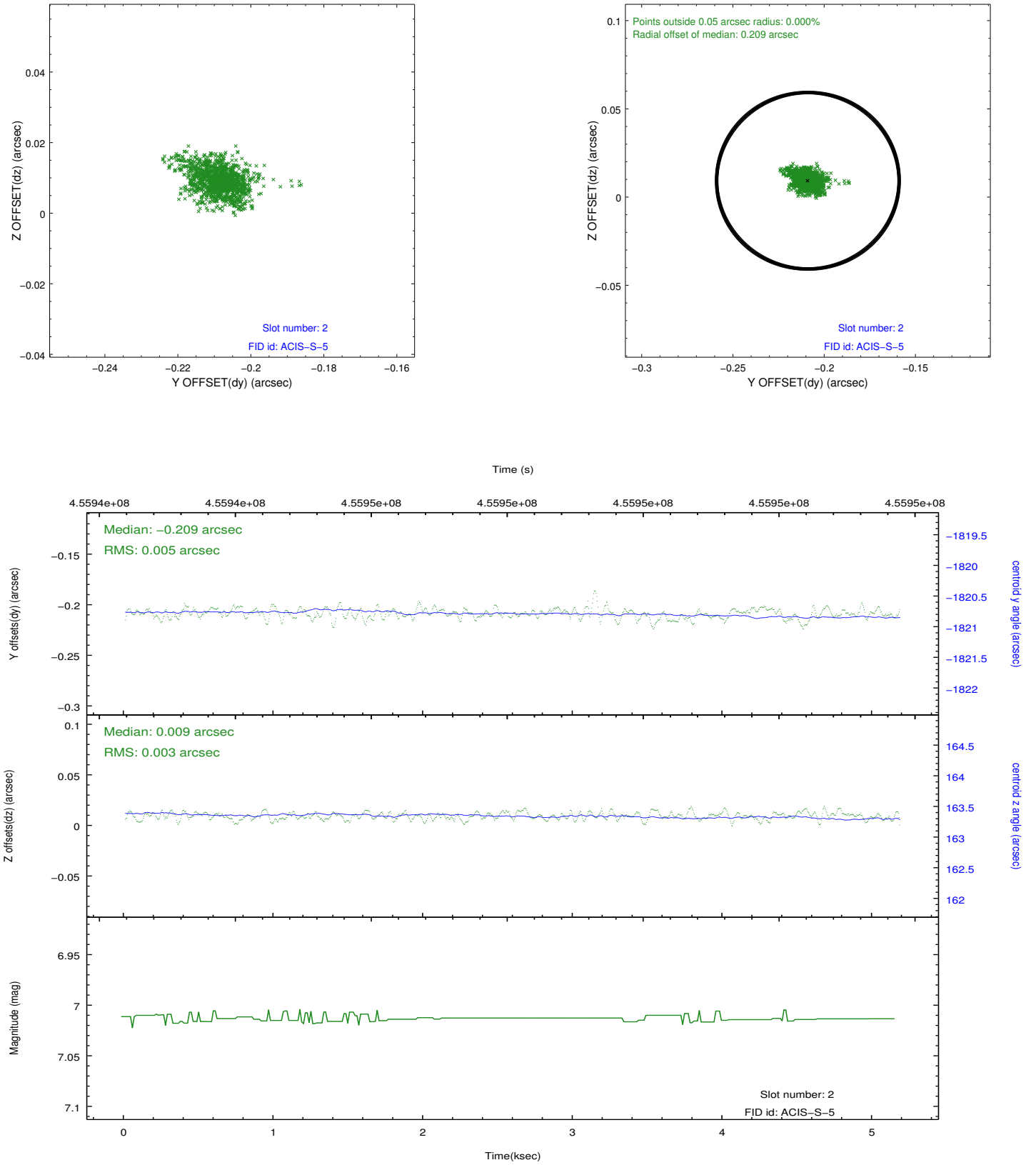
### 2.5.1 Slot 0



## 2.5.2 Slot 1



### 2.5.3 Slot 2



## A Summary

### A.1 Status

V&V Scientist	Joy Nichols
V&V Date (YYYY-MM-DD)	2012.06.14
V&V Edition	1
V&V Disposition and Status	OK
V&V Charge Time	4.9695999815464

### A.2 Comments