

# V&V Reference Report

## L2 ASCDS Version : 8.4.5

Observation 12815 - L2 Version 2  
Chandra X-Ray Center

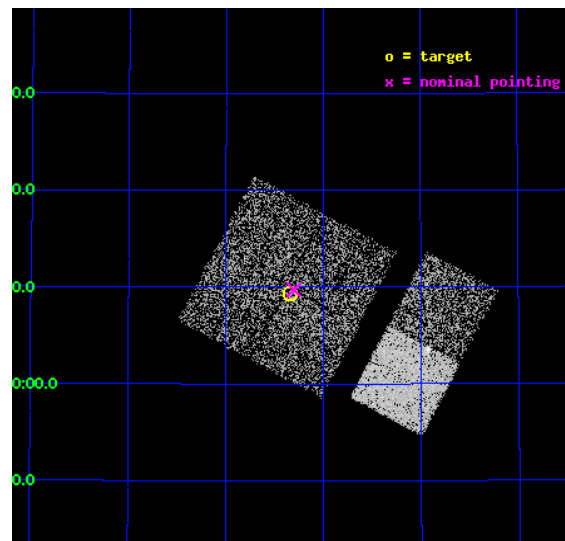
L2 Processing Date : Jul 8 2012

## Contents

<b>1</b>	<b>Front</b>	<b>2</b>
<b>2</b>	<b>OBI</b>	<b>3</b>
2.1	OBI . . . . .	3
2.1.1	Images . . . . .	3
2.1.2	Bias . . . . .	3
2.1.3	Parameters . . . . .	4
2.1.4	Events . . . . .	4
2.2	Compared Parameters . . . . .	5
2.3	Aspect . . . . .	6
2.4	Star Slots . . . . .	9
2.4.1	Slot 3 . . . . .	9
2.4.2	Slot 4 . . . . .	10
2.4.3	Slot 5 . . . . .	11
2.4.4	Slot 6 . . . . .	12
2.4.5	Slot 7 . . . . .	13
2.5	FID Slots . . . . .	14
2.5.1	Slot 0 . . . . .	14
2.5.2	Slot 1 . . . . .	15
2.5.3	Slot 2 . . . . .	16
<b>A</b>	<b>Summary</b>	<b>17</b>
A.1	Status . . . . .	17
A.2	Comments . . . . .	17

# 1 Front

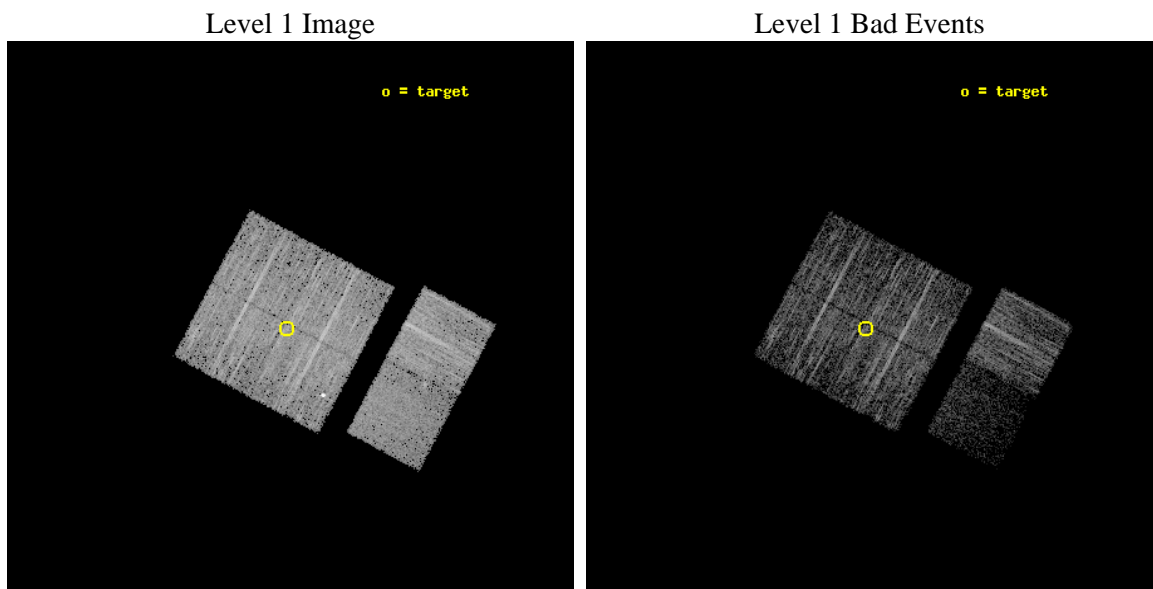
seq_num	702451	Sequence number
obs_id	12815	Observation id
title	A Systematic Chandra Survey of AGN in Major Mergers -- How many Binary AGN are out there?	Proposal title
observer	DR. Kevin Schawinski	Principal investigator
object	GZ_merger_AGN_5	Source name
dtcycle	0	&#160
cycle	P	events from which exps? Prim/Second/Both
ra_targ	131.584167	Observer's specified target RA [deg]
dec_targ	47.156333	Observer's specified target Dec [deg]
ra_nom	131.57565155086	Nominal RA [deg]
dec_nom	47.162086540278	Nominal Dec [deg]
roll_nom	118.00248301059	Nominal Roll [deg]
revision	2	Processing version of data
ontime	4959.514998138	Sum of GTIs [s]
livetime	4896.7146329701	Livetime [s]
ontime0	4959.3918781281	Sum of GTIs [s]
ontime1	4959.4329181314	Sum of GTIs [s]
ontime2	4959.4739581347	Sum of GTIs [s]
ontime3	4959.514998138	Sum of GTIs [s]
ontime6	4959.5970781446	Sum of GTIs [s]
ontime7	4959.5560381413	Sum of GTIs [s]
l2events	22077	Number of level 2 events



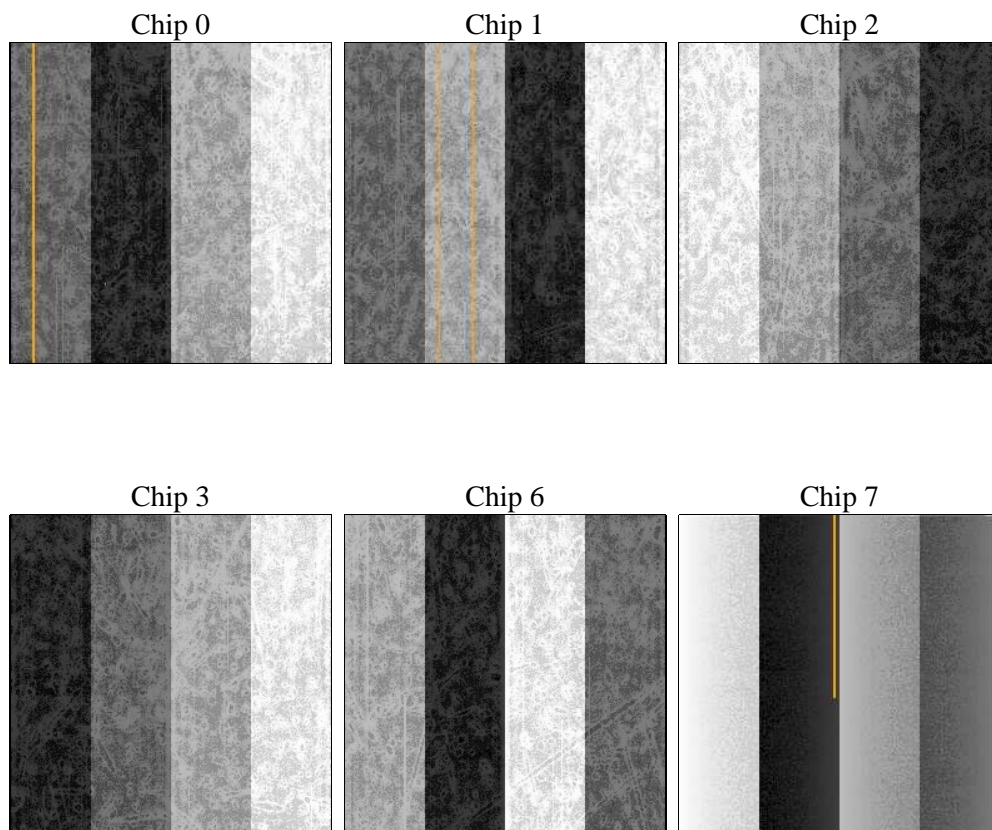
## 2 OBI

### 2.1 OBI

#### 2.1.1 Images



#### 2.1.2 Bias



### 2.1.3 Parameters

obi_num	0	Obi number	sched_exp_time	5000.302000	[s] Scheduled observation exposure time
ascdsver	8.4.5	Processing system revision	ontime	4959.514998138	Sum of GTIs [s]
caldsver	4.5.0	&#160	ontime0	4959.3918781281	Sum of GTIs [s]
date	2012-07-08T20:40:21	Date and time of file creation	ontime1	4959.4329181314	Sum of GTIs [s]
revision	2	Processing version of data	ontime2	4959.4739581347	Sum of GTIs [s]
			ontime3	4959.514998138	Sum of GTIs [s]
			ontime6	4959.5970781446	Sum of GTIs [s]
			ontime7	4959.5560381413	Sum of GTIs [s]
			l1events	159163	Number of level 1 events

### 2.1.4 Events

	ccd 0	ccd 1	ccd 2	ccd 3	ccd 6	ccd 7
level 1 events	24808	26565	29464	29046	29915	19365
rejected events	21931	23689	26782	24946	26912	8251
rejected %	88%	89%	90%	85%	89%	42%

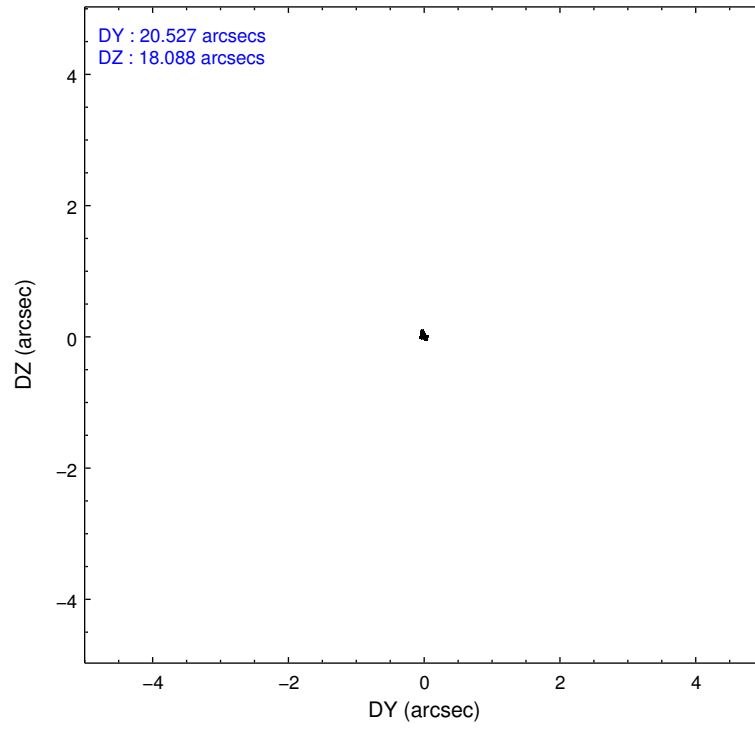
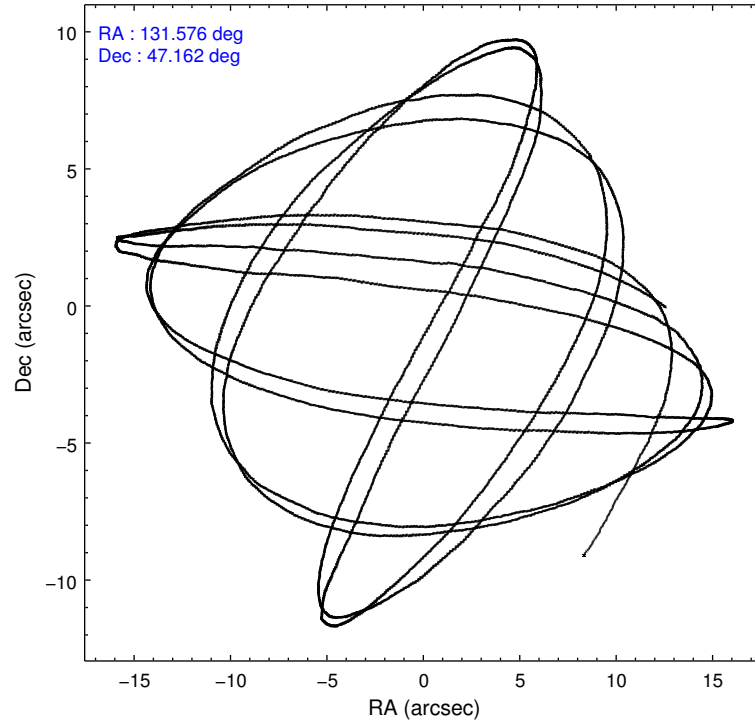
	ccd 0	ccd 1	ccd 2	ccd 3	ccd 6	ccd 7
grade 0 events	1113	1082	1134	2595	1152	1448
	4%	4%	3%	8%	3%	7%
grade 1 events	16	23	20	23	26	40
	0%	0%	0%	0%	0%	0%
grade 2 events	697	641	658	529	728	2677
	2%	2%	2%	1%	2%	13%
grade 3 events	321	331	222	281	316	1140
	1%	1%	0%	0%	1%	5%
grade 4 events	300	298	270	272	322	1065
	1%	1%	0%	0%	1%	5%
grade 5 events	590	629	531	731	705	2015
	2%	2%	1%	2%	2%	10%
grade 6 events	449	526	404	427	486	4803
	1%	1%	1%	1%	1%	24%
grade 7 events	21322	23035	26225	24188	26180	6177
	85%	86%	89%	83%	87%	31%

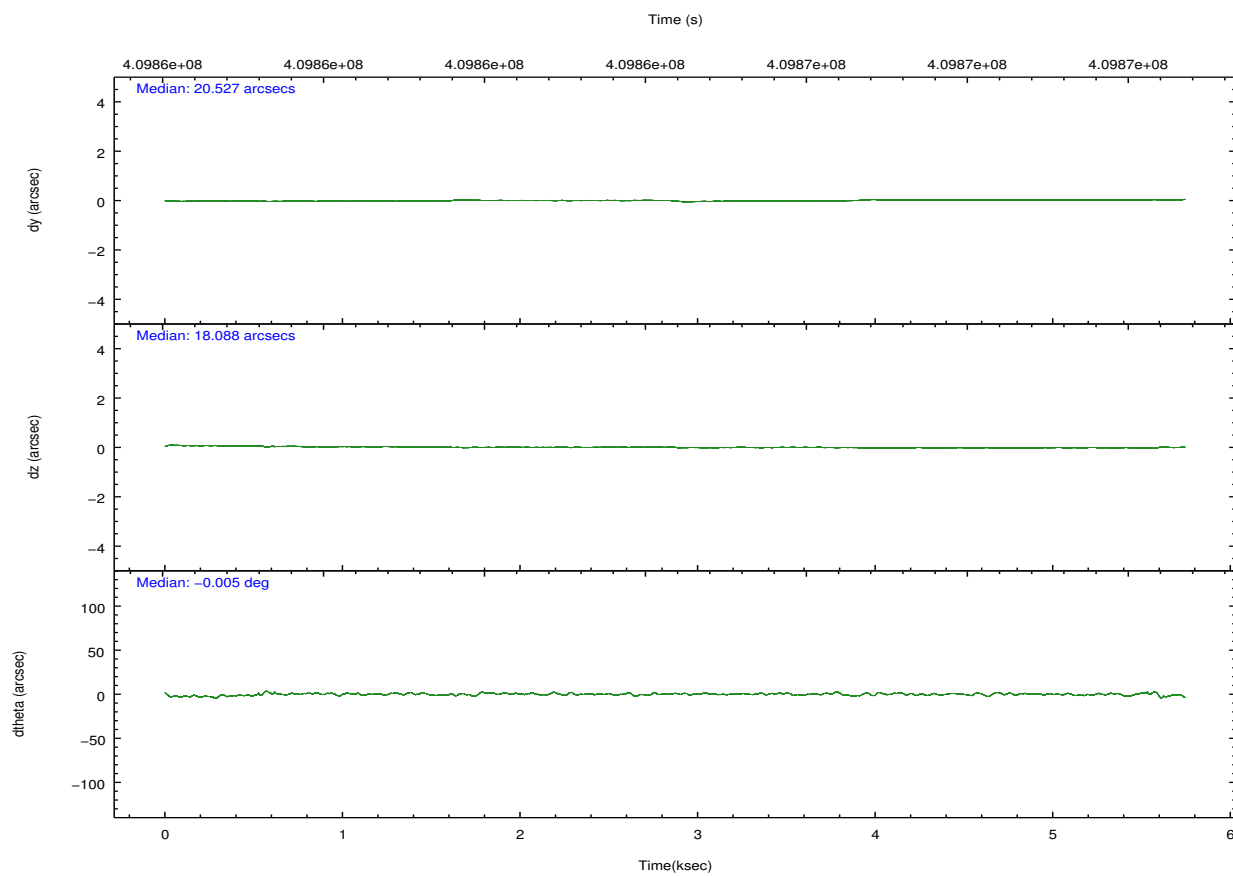
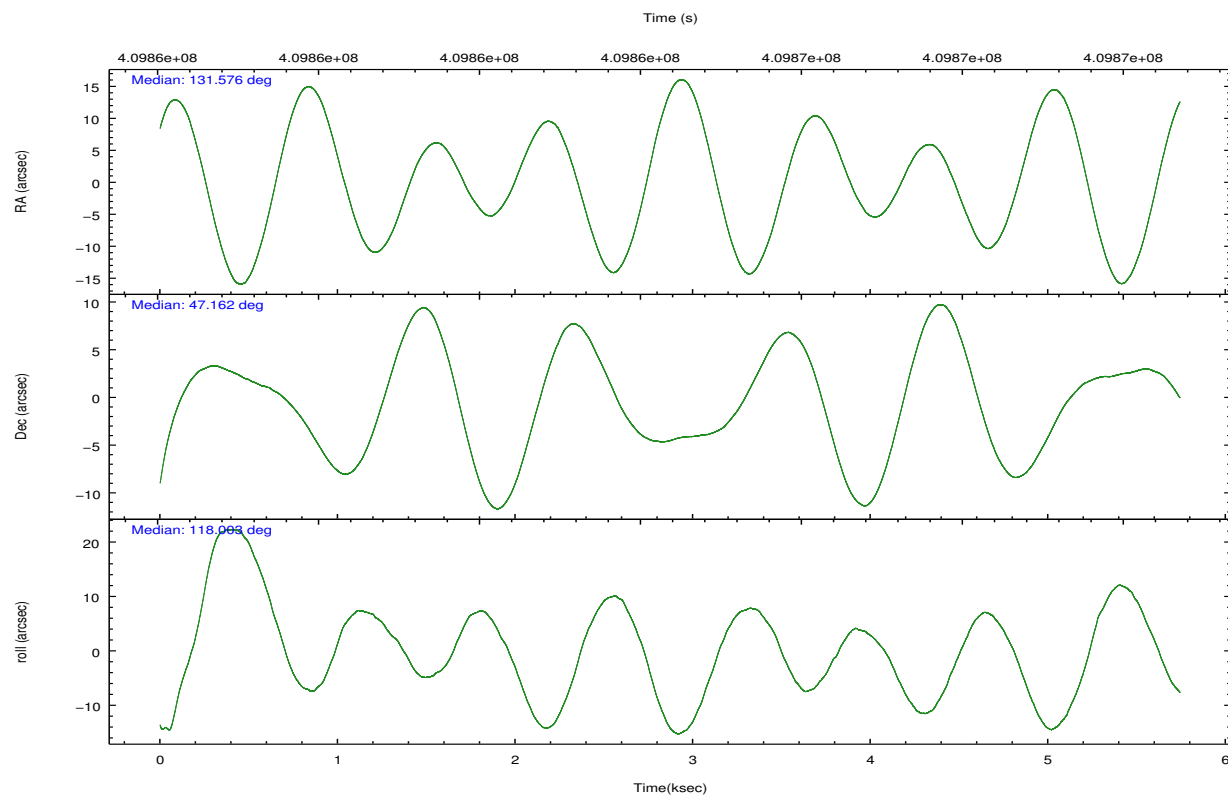


## 2.2 Compared Parameters

Parameter	Planned	Actual	Parameter	Planned	Actual
Instrument	ACIS	ACIS	Obspar format version number	7	7
Detector	ACIS-012367	ACIS-012367	Obspar file type	PREDICTED	ACTUAL
Grating	NONE	NONE	Obspar update status	NONE	UPDATED
Data mode	FAINT	FAINT	CCD I0 on	Y	Y
Observation mode	POINTING	POINTING	CCD I1 on	Y	Y
[deg] Pointing RA	131.610097	131.575651550859	CCD I2 on	Y	Y
[deg] Pointing Dec	47.147539	47.16208654027798	CCD I3 on	Y	Y
[deg] Pointing Roll	117.768552	118.002483010589	CCD S0 on	N	N
[mm] SIM focus pos	-0.782348	-0.7809083437167272	CCD S1 on	N	N
[mm] SIM defocus	0	0.001439871863259334	CCD S2 on	O1	Y
[mm] SIM translation stage pos	-233.592463	-233.5874344608287	CCD S3 on	O2	Y
[mm] SIM translation stage offset	0	-0.005018542100998502	CCD S4 on	N	N
[s] Observation start time (MET)	409863048.184000	409861809.54121	CCD S5 on	N	N
Observation start date	2010-12-27T18:49:42	2010-12-27T18:30:09	Number of optional ACIS chips dropped	0	0
[s] Observation end time (MET)	409868048.184000	409868285.49155	On-chip summing requested	N	N
Observation end date	2010-12-27T20:13:02	2010-12-27T20:18:05	Subarray requested	NONE	NONE
Read mode	TIMED	TIMED	Alternating exposures requested	N	N
			[s] Primary exposure time	0.000000	3.2

## 2.3 Aspect



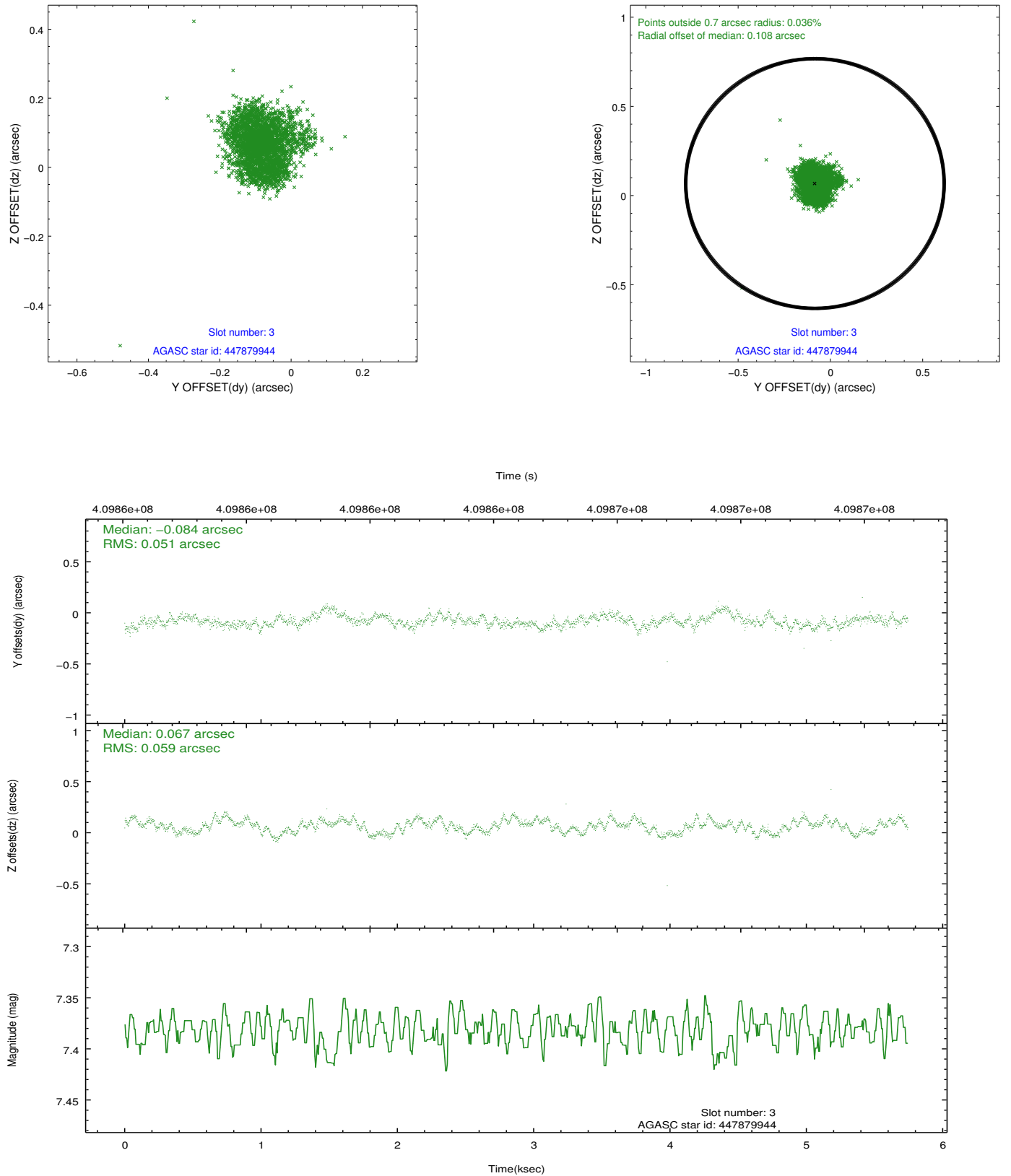


### Slot Statistics

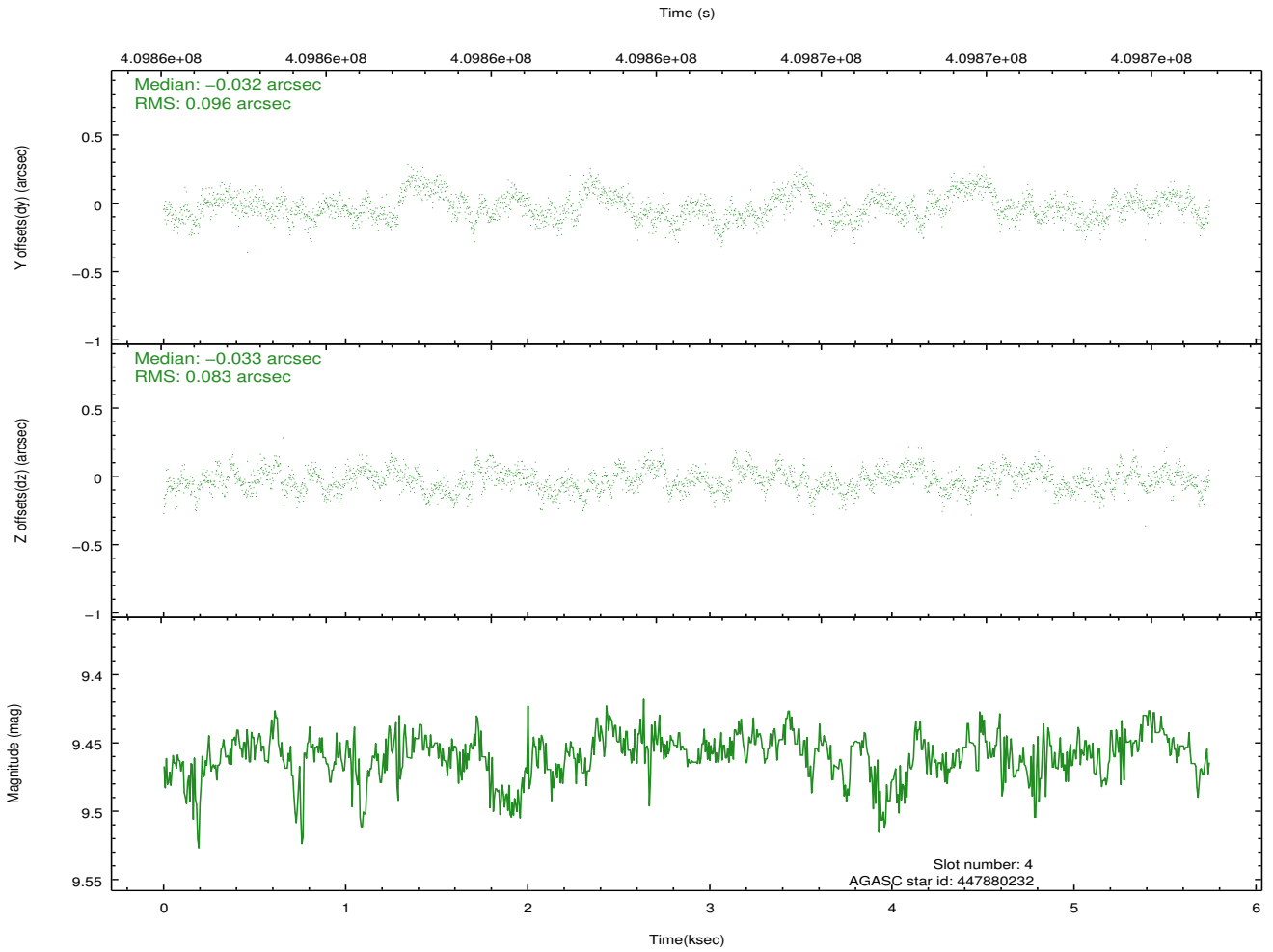
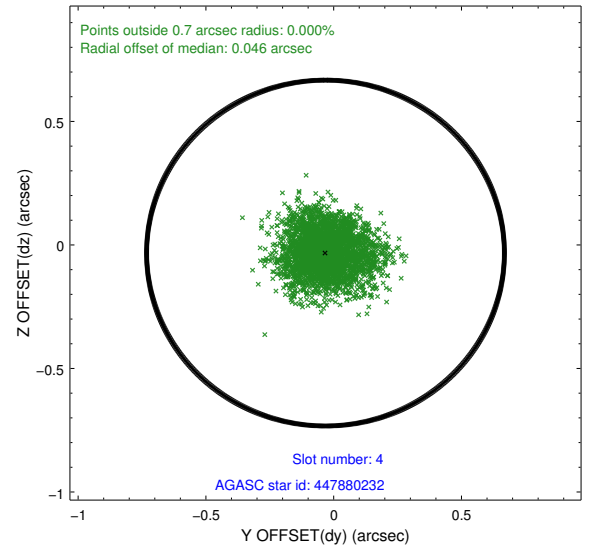
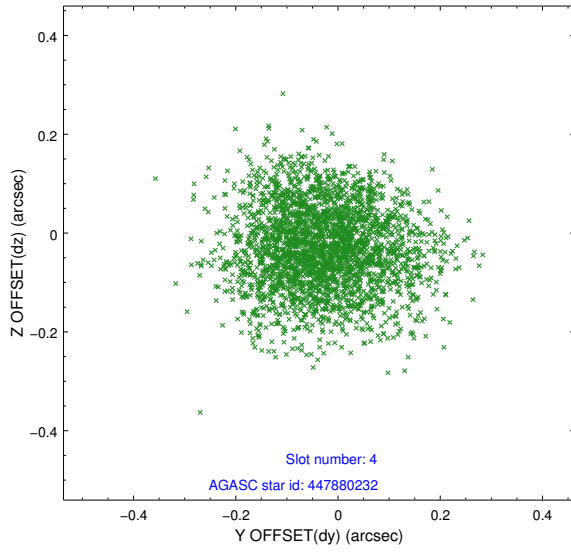
slot	status	id	mag	n_pts	med_dy	med_dz	dr1	dr2	ra	dec	mean_y	mean_z
0	FID	ACIS-I-1	7.10	1401	-0.081	0.024	0.009	0.016	0.000000	0.000000	918.75	-841.70
1	FID	ACIS-I-2	7.01	1400	-0.148	-0.087	0.007	0.013	0.000000	0.000000	-774.84	-848.86
2	FID	ACIS-I-4	7.02	1401	0.130	0.130	0.007	0.013	0.000000	0.000000	2138.27	1057.74
3	GUIDE	447879944	7.38	2802	-0.084	0.067	0.085	0.125	132.026120	46.691845	-1927.63	-145.68
4	GUIDE	447880232	9.46	2802	-0.032	-0.033	0.137	0.217	131.467482	47.484180	1234.01	-257.43
5	GUIDE	447880376	9.26	2802	-0.172	-0.043	0.128	0.197	131.961511	47.311308	124.24	-1034.49
6	GUIDE	448276224	9.71	2723	-0.005	-0.125	0.152	0.260	131.799871	47.948526	2338.89	-1748.95
7	GUIDE	447878864	9.69	2790	0.292	0.133	0.151	0.251	132.570401	47.357788	-407.33	-2431.64

## 2.4 Star Slots

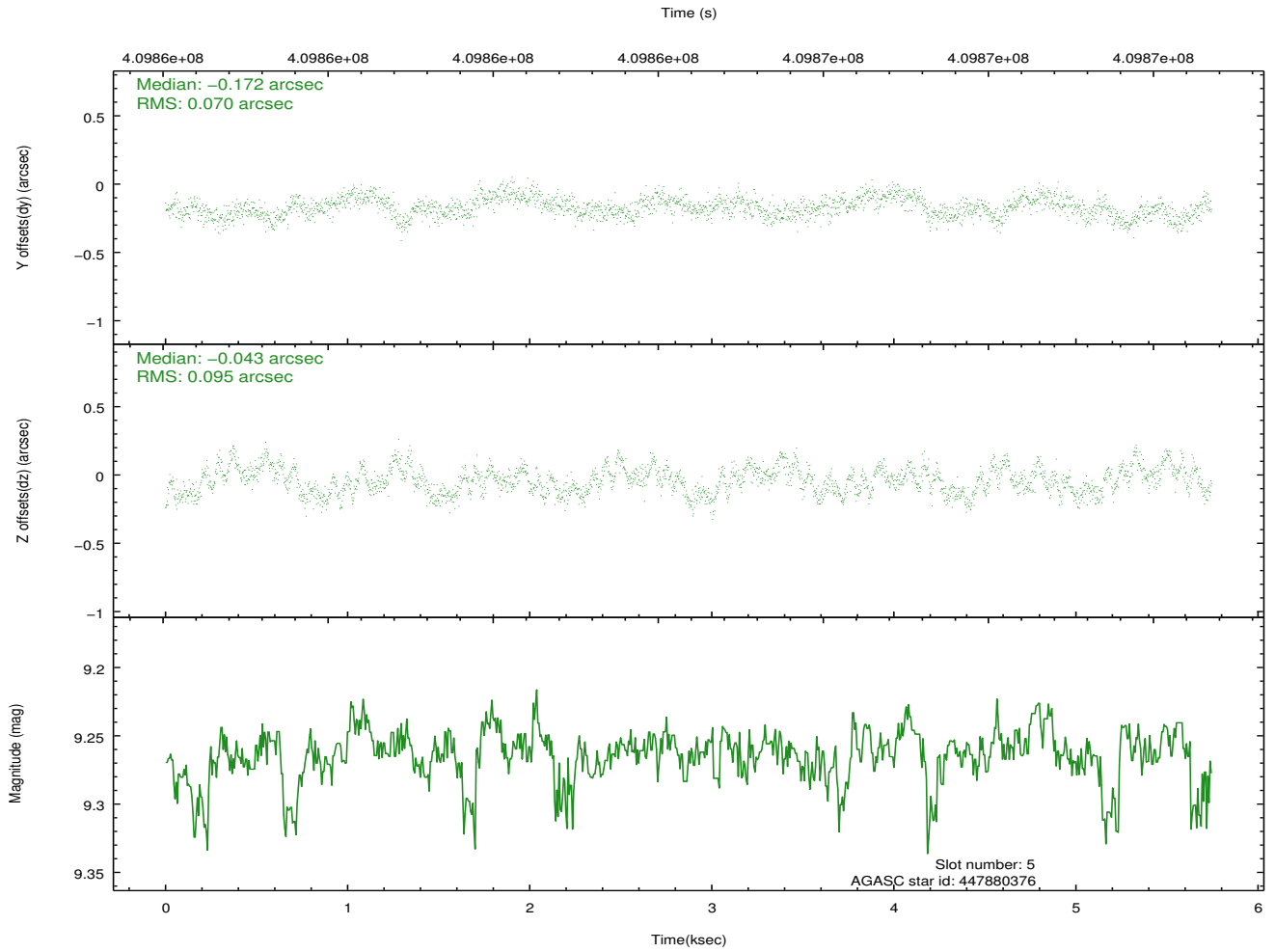
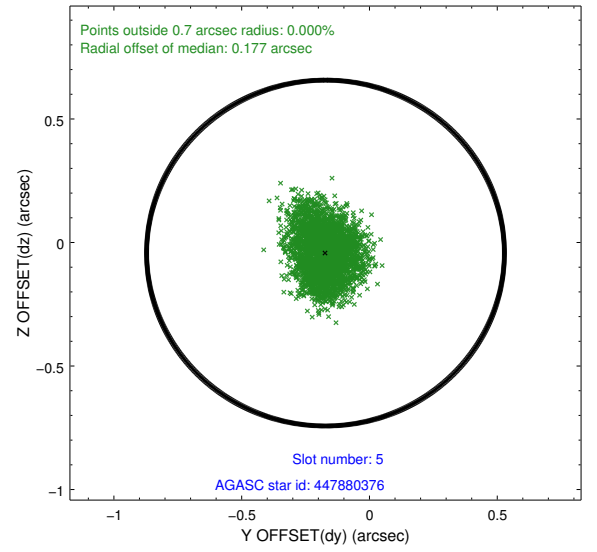
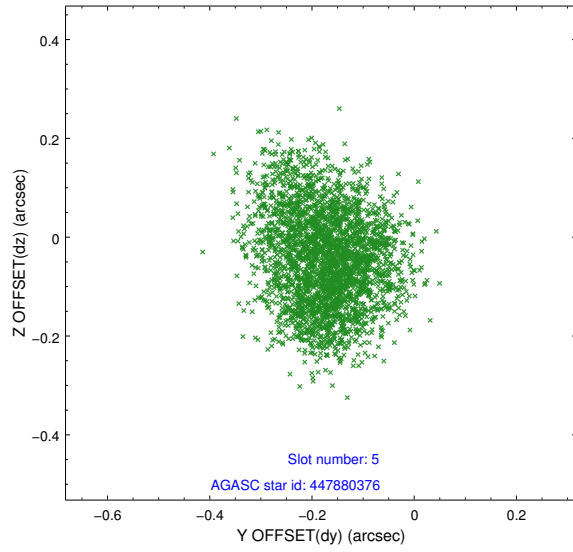
### 2.4.1 Slot 3



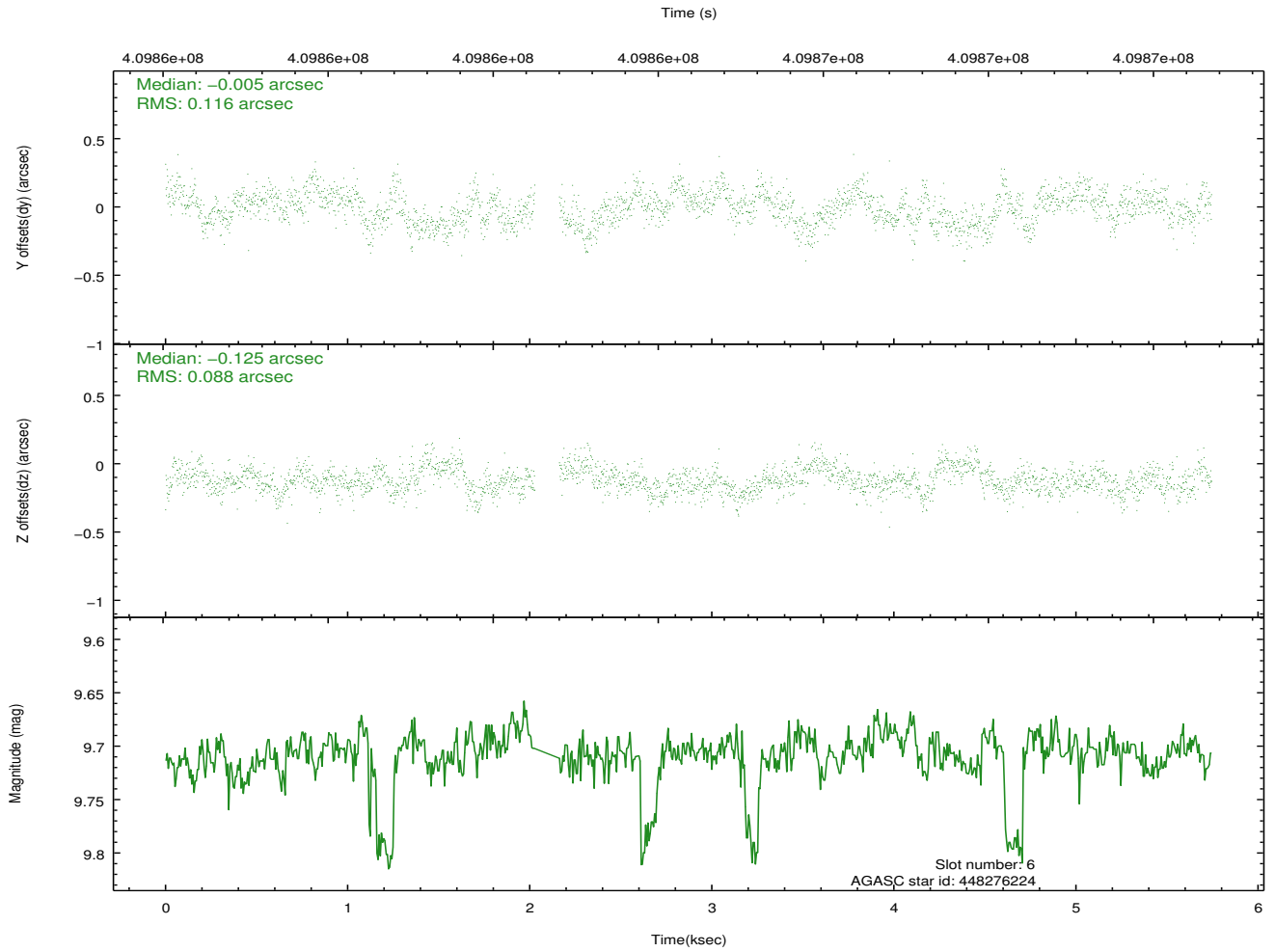
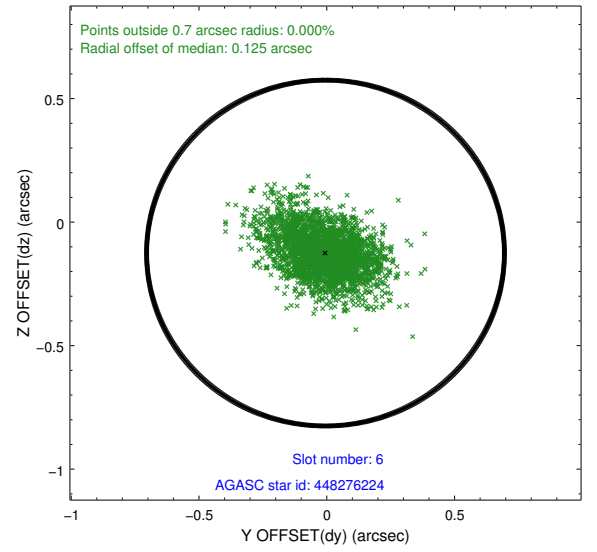
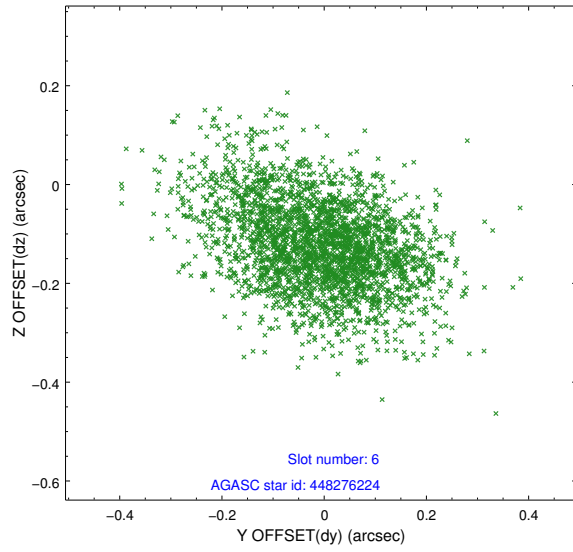
## 2.4.2 Slot 4



### 2.4.3 Slot 5

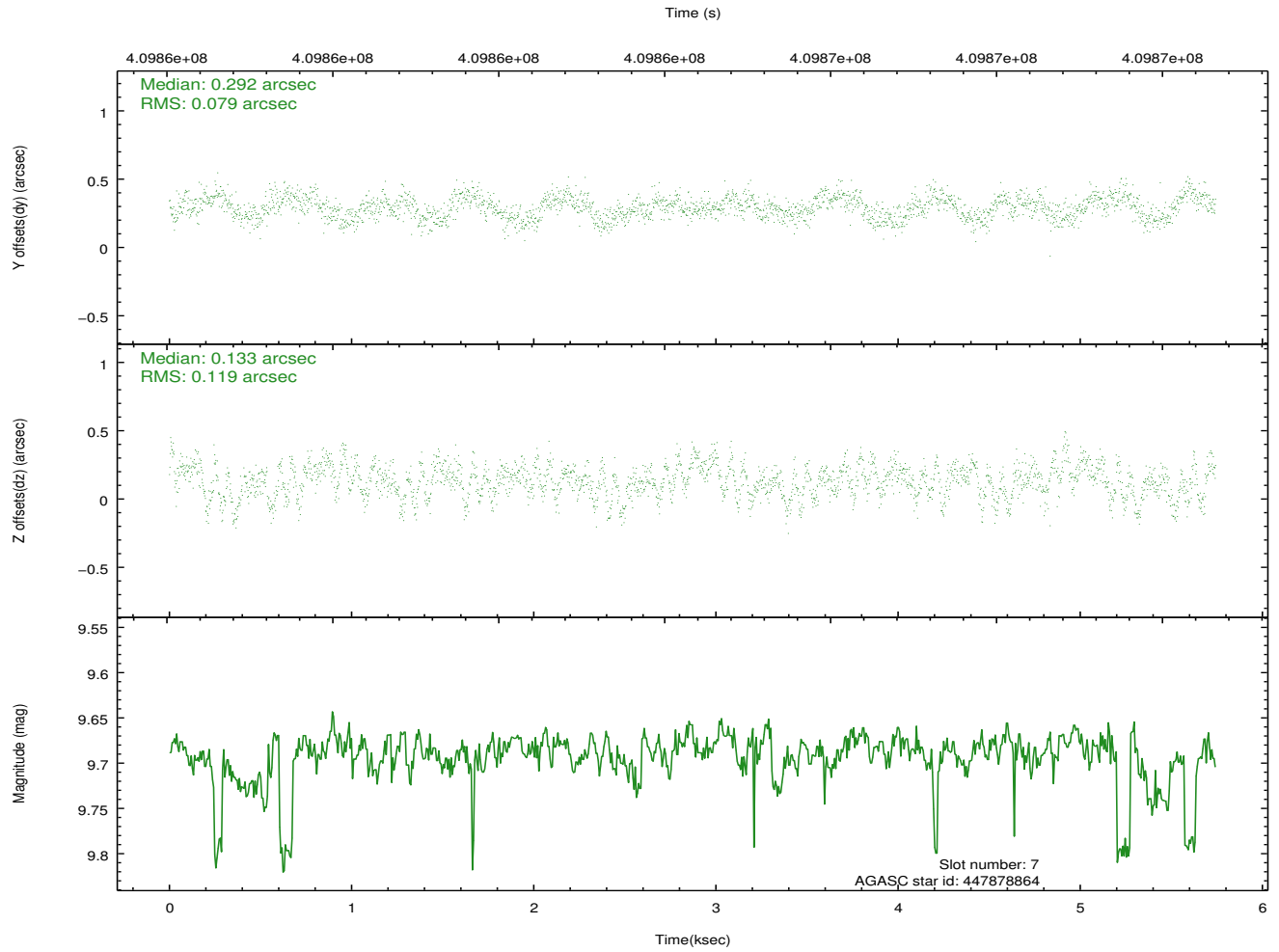
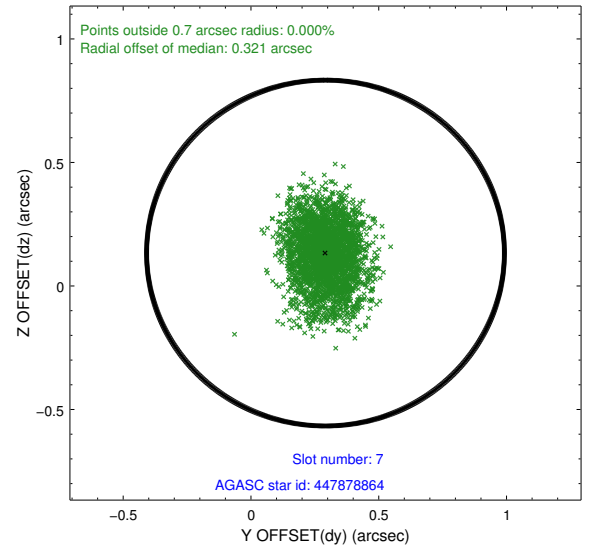
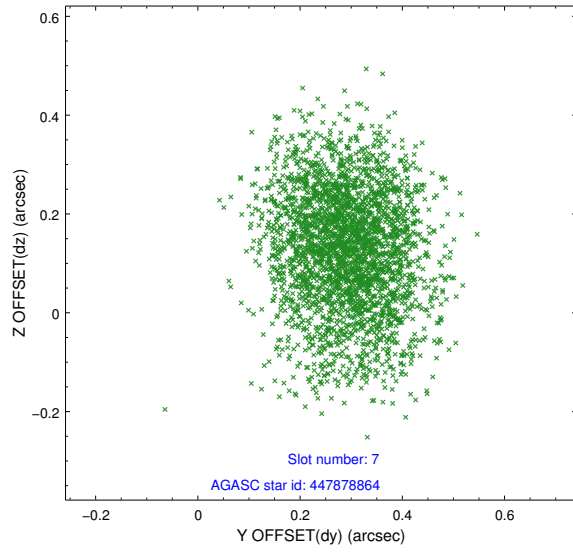


## 2.4.4 Slot 6



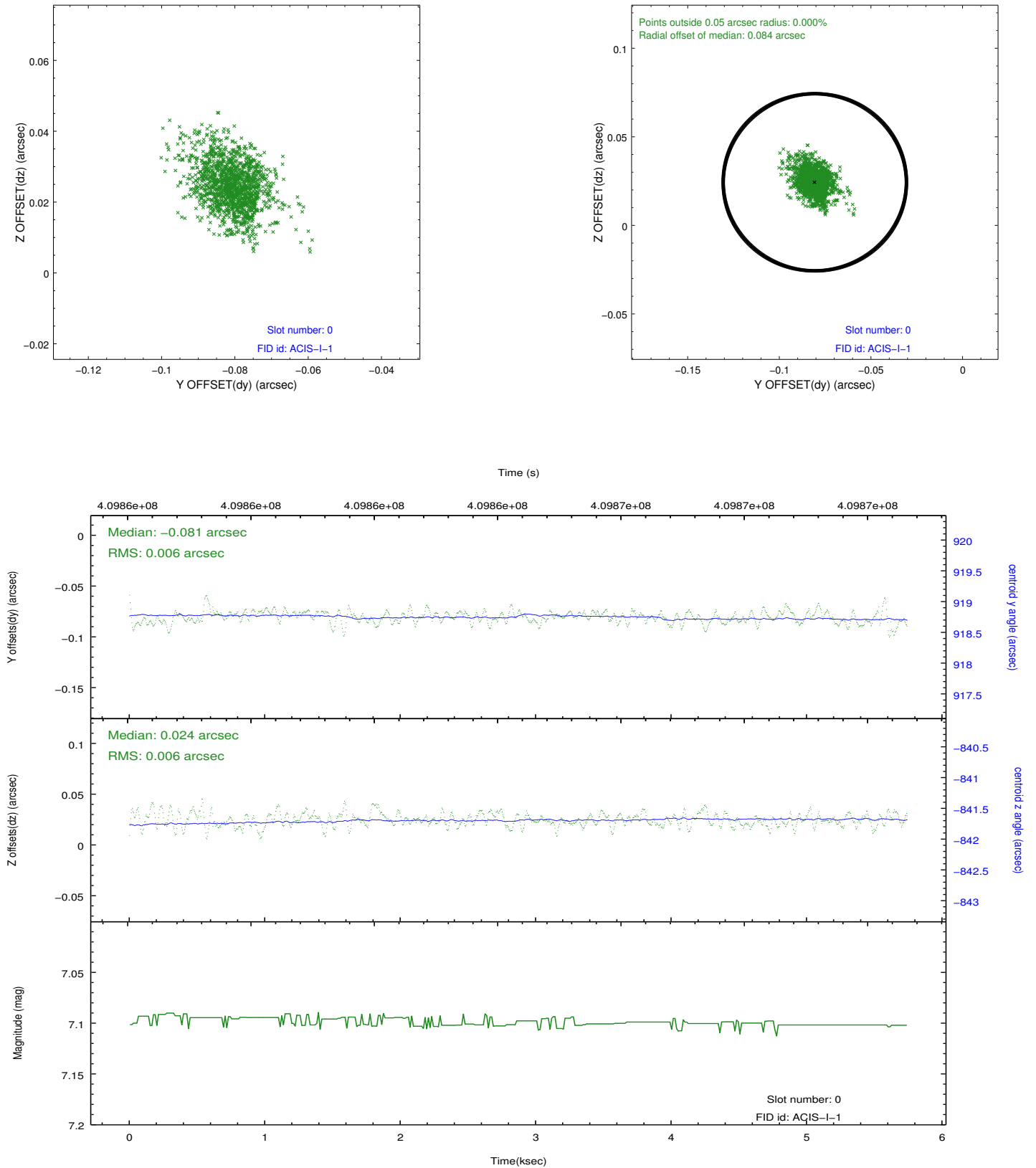


## 2.4.5 Slot 7

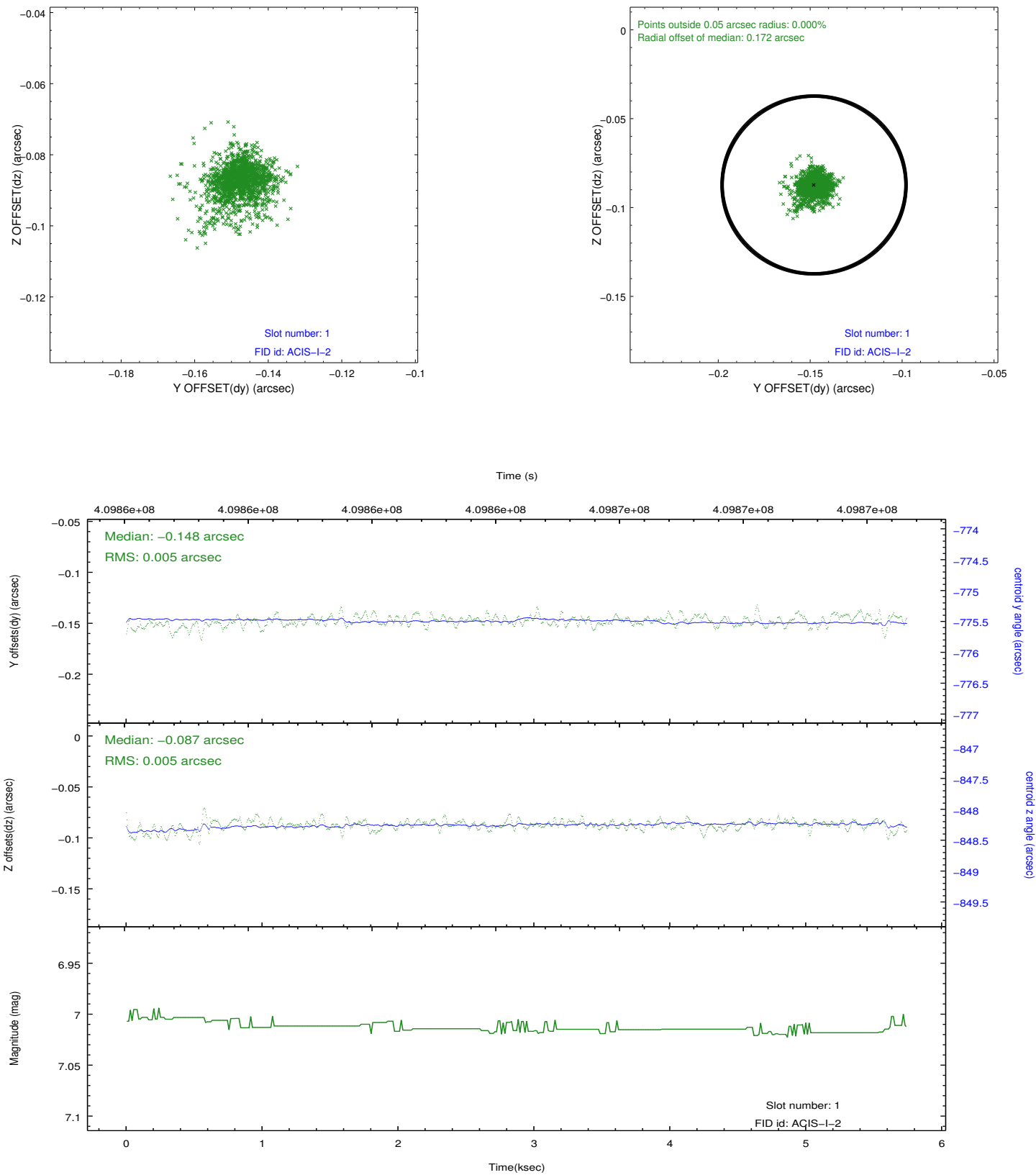


## 2.5 FID Slots

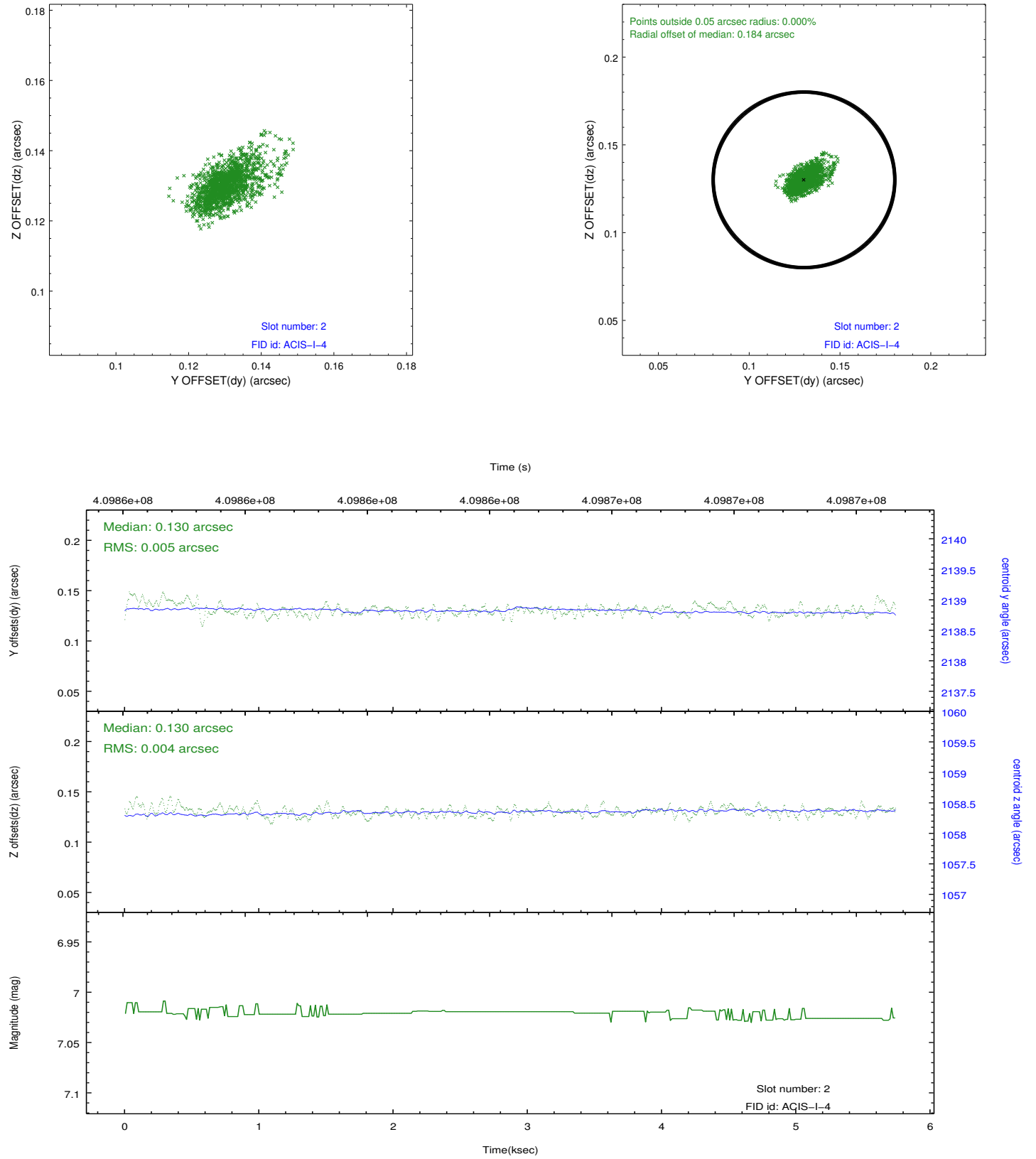
### 2.5.1 Slot 0



## 2.5.2 Slot 1



### 2.5.3 Slot 2



## A Summary

### A.1 Status

V&V Scientist	Jen Lauer
V&V Date (YYYY-MM-DD)	2012.07.17
V&V Edition	1
V&V Disposition and Status	OK
V&V Charge Time	4.9595150017142

### A.2 Comments