

V&V Reference Report

L2 ASCDS Version : 8.4.3

Observation 12615 - L2 Version 2
Chandra X-Ray Center

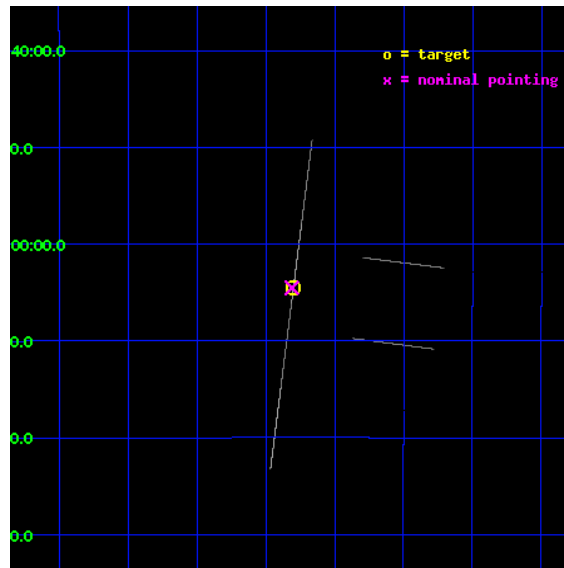
L2 Processing Date : Feb 26 2012

Contents

1	Front	2
2	OBI	3
2.1	OBI	3
2.1.1	Images	3
2.1.2	Bias	3
2.1.3	Parameters	4
2.1.4	Events	4
2.2	Compared Parameters	5
2.3	Aspect	6
2.4	Star Slots	9
2.4.1	Slot 3	9
2.4.2	Slot 4	10
2.4.3	Slot 5	11
2.4.4	Slot 6	12
2.4.5	Slot 7	13
2.5	FID Slots	14
2.5.1	Slot 0	14
2.5.2	Slot 1	15
2.5.3	Slot 2	16
A	Summary	17
A.1	Status	17
A.2	Comments	17

1 Front

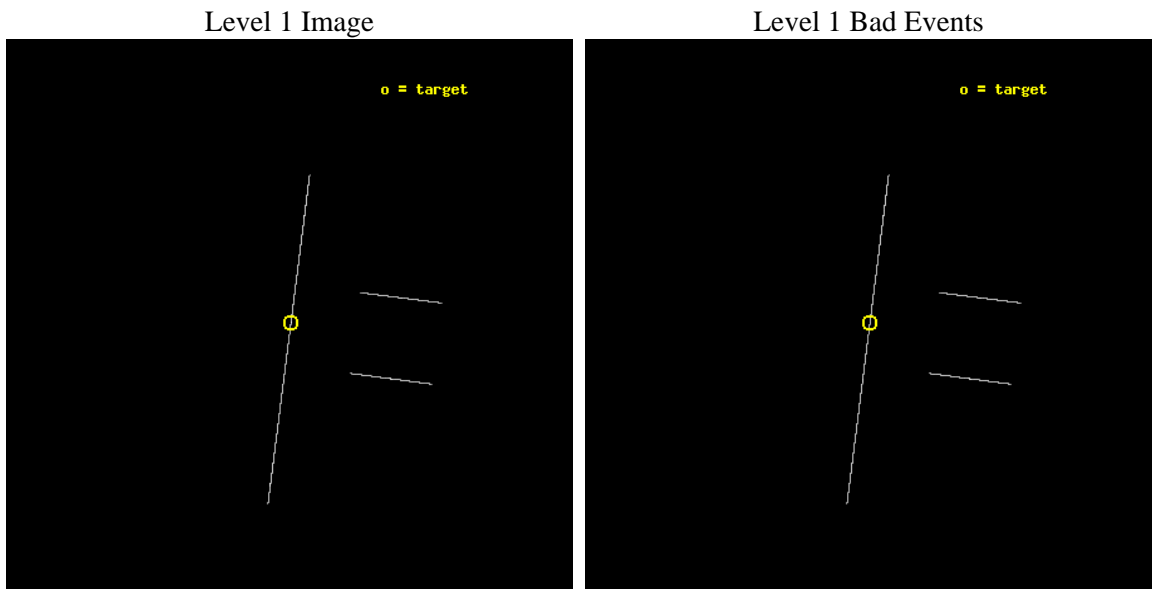
seq_num	501448	Sequence number
obs_id	12615	Observation id
title	TINY HICCUPS TO TITANIC EXPLOSIONS: Tackling Transients in Anomalous X-ray Pulsars	Proposal title
observer	Professor Victoria Kaspi	Principal investigator
object	SWIFT J1822.3-1606	Source name
ra_targ	275.575	Observer's specified target RA [deg]
dec_targ	-16.074111	Observer's specified target Dec [deg]
ra_nom	275.57785980618	Nominal RA [deg]
dec_nom	-16.075409095513	Nominal Dec [deg]
roll_nom	277.26310993968	Nominal Roll [deg]
revision	2	Processing version of data
ontime	16271.5	Sum of GTIs [s]
livetime	16207.939453125	Livetime [s]
ontime2	16271.5	Sum of GTIs [s]
ontime3	16271.5	Sum of GTIs [s]
ontime5	16271.5	Sum of GTIs [s]
ontime6	16271.5	Sum of GTIs [s]
ontime7	16271.5	Sum of GTIs [s]
ontime8	16271.5	Sum of GTIs [s]
l2events	223535	Number of level 2 events



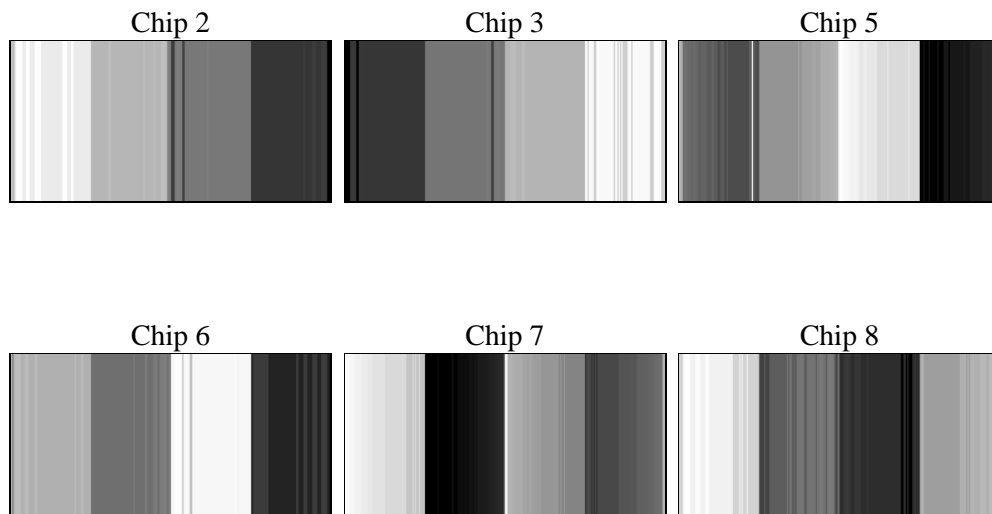
2 OBI

2.1 OBI

2.1.1 Images



2.1.2 Bias



2.1.3 Parameters

obi_num	0	Obi number	sched_exp_time	16193.767000	[s] Scheduled observation exposure time
ascdsver	8.4.3	Processing system revision	ontime	16271.5	Sum of GTIs [s]
caldsver	4.4.8	 	ontime2	16271.5	Sum of GTIs [s]
date	2012-02-26T02:41:56	Date and time of file creation	ontime3	16271.5	Sum of GTIs [s]
revision	2	Processing version of data	ontime5	16271.5	Sum of GTIs [s]
			ontime6	16271.5	Sum of GTIs [s]
			ontime7	16271.5	Sum of GTIs [s]
			ontime8	16271.5	Sum of GTIs [s]
			l1events	1273597	Number of level 1 events

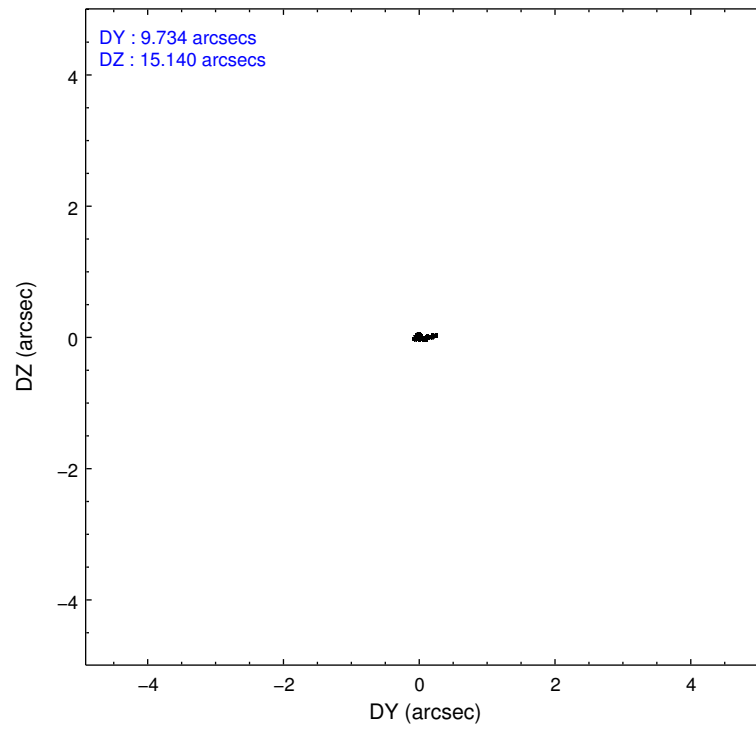
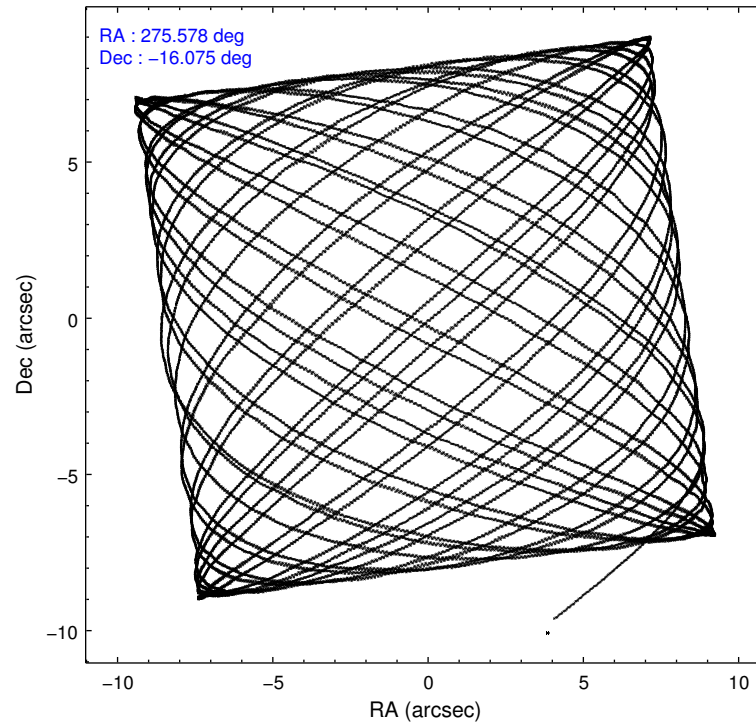
2.1.4 Events

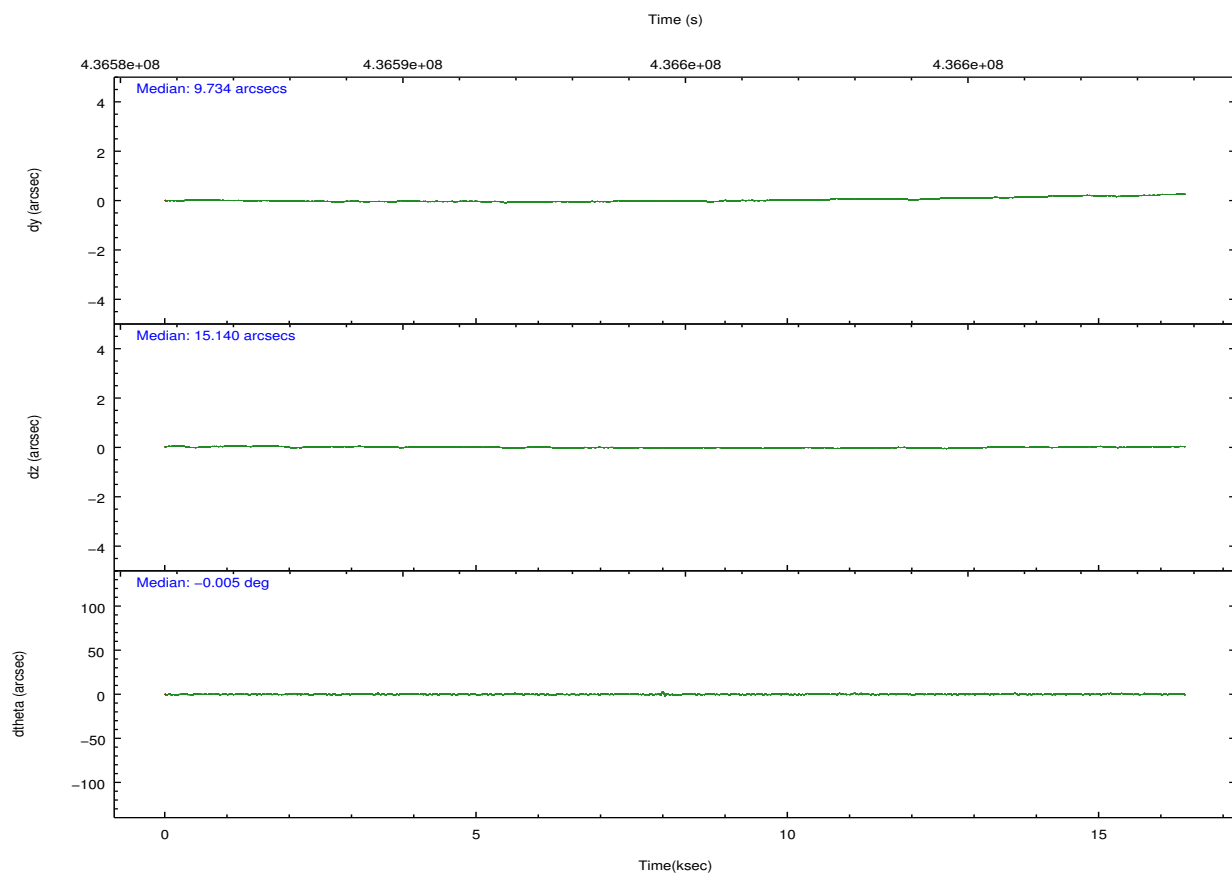
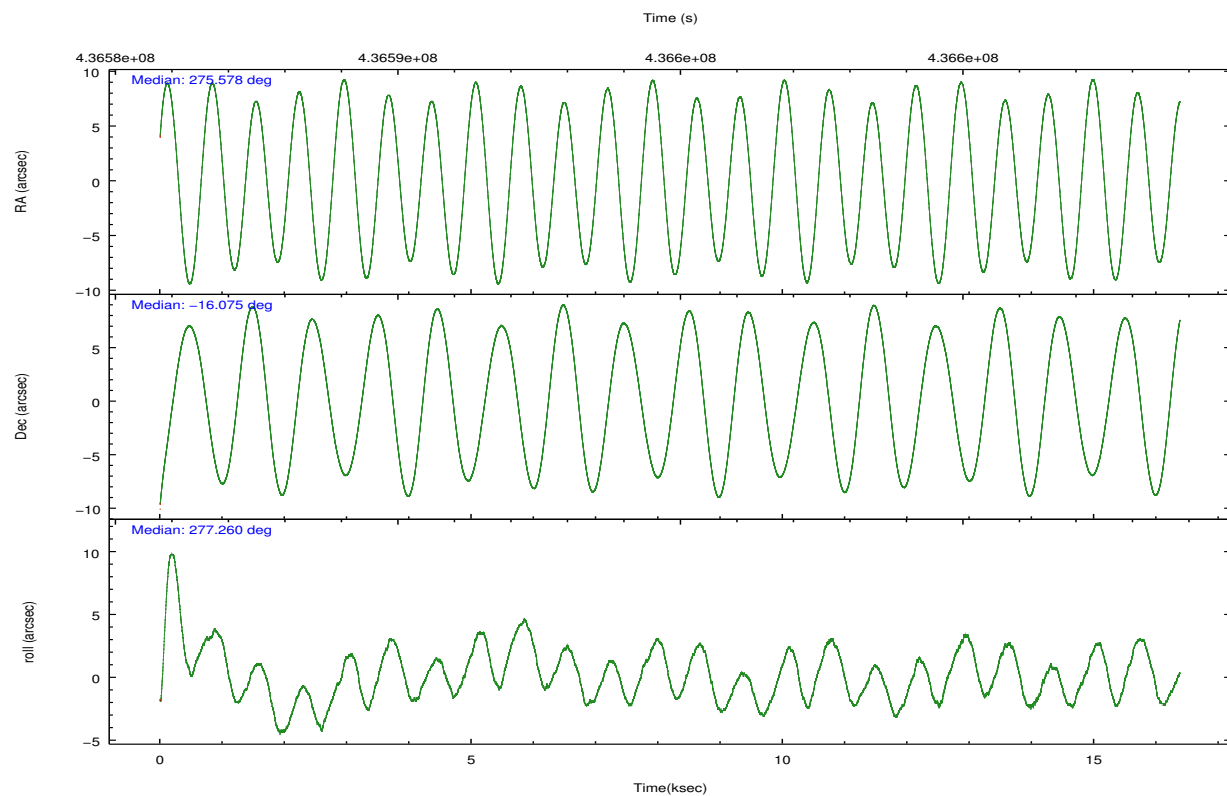
	ccd 2	ccd 3	ccd 5	ccd 6	ccd 7	ccd 8		ccd 2	ccd 3	ccd 5	ccd 6	ccd 7	ccd 8
level 1 events	185855	173374	261871	172273	210461	269763	grade 0 events	2601	2316	45645	2108	10409	10377
rejected events	166973	155139	130043	154010	126204	221561		1%	1%	17%	1%	4%	3%
rejected %	89%	89%	49%	89%	59%	82%	grade 1 events	98	84	215	77	196	227
								0%	0%	0%	0%	0%	0%
							grade 2 events	8049	7208	35446	7186	22893	14434
								4%	4%	13%	4%	10%	5%
							grade 3 events	2201	2428	1935	2246	5915	5356
								1%	1%	0%	1%	2%	1%
							grade 4 events	2202	2068	1869	2195	5863	5216
								1%	1%	0%	1%	2%	1%
							grade 5 events	4338	4914	11065	4970	12632	7267
								2%	2%	4%	2%	6%	2%
							grade 6 events	3832	4218	46952	4530	39212	12821
								2%	2%	17%	2%	18%	4%
							grade 7 events	162534	150138	118744	148961	113341	214065
								87%	86%	45%	86%	53%	79%

2.2 Compared Parameters

Parameter	Planned	Actual	Parameter	Planned	Actual
Instrument	ACIS	ACIS	Obspar format version number	7	7
Detector	ACIS-235678	ACIS-235678	Obspar file type	PREDICTED	ACTUAL
Grating	NONE	NONE	Obspar update status	NONE	UPDATED
Data mode	CC33_FAINT	CC33_FAINT	CCD I0 on	N	N
Observation mode	POINTING	POINTING	CCD I1 on	N	N
[deg] Pointing RA	275.560318	275.5778598061769	CCD I2 on	O2	Y
[deg] Pointing Dec	-16.053869	-16.07540909551322	CCD I3 on	O3	Y
[deg] Pointing Roll	277.101635	277.2631099396831	CCD S0 on	N	N
[mm] SIM focus pos	-0.684267	-0.6828225247311905	CCD S1 on	O1	Y
[mm] SIM defocus	0	0.001444936568705701	CCD S2 on	Y	Y
[mm] SIM translation stage pos	-190.132523	-190.145094680475	CCD S3 on	Y	Y
[mm] SIM translation stage offset	0	0.01257209746719923	CCD S4 on	Y	Y
[s] Observation start time (MET)	436586818.184000	436586112.59783	CCD S5 on	N	N
Observation start date	2011-11-02T02:05:52	2011-11-02T01:55:12	Number of optional ACIS chips dropped	0	0
[s] Observation end time (MET)	436603011.184000	436603237.27373	On-chip summing requested	N	N
Observation end date	2011-11-02T06:35:45	2011-11-02T06:40:37	Subarray requested	NONE	NONE
Read mode	CONTINUOUS	CONTINUOUS	Alternating exposures requested	N	N
			[s] Primary exposure time	0.000000	0

2.3 Aspect



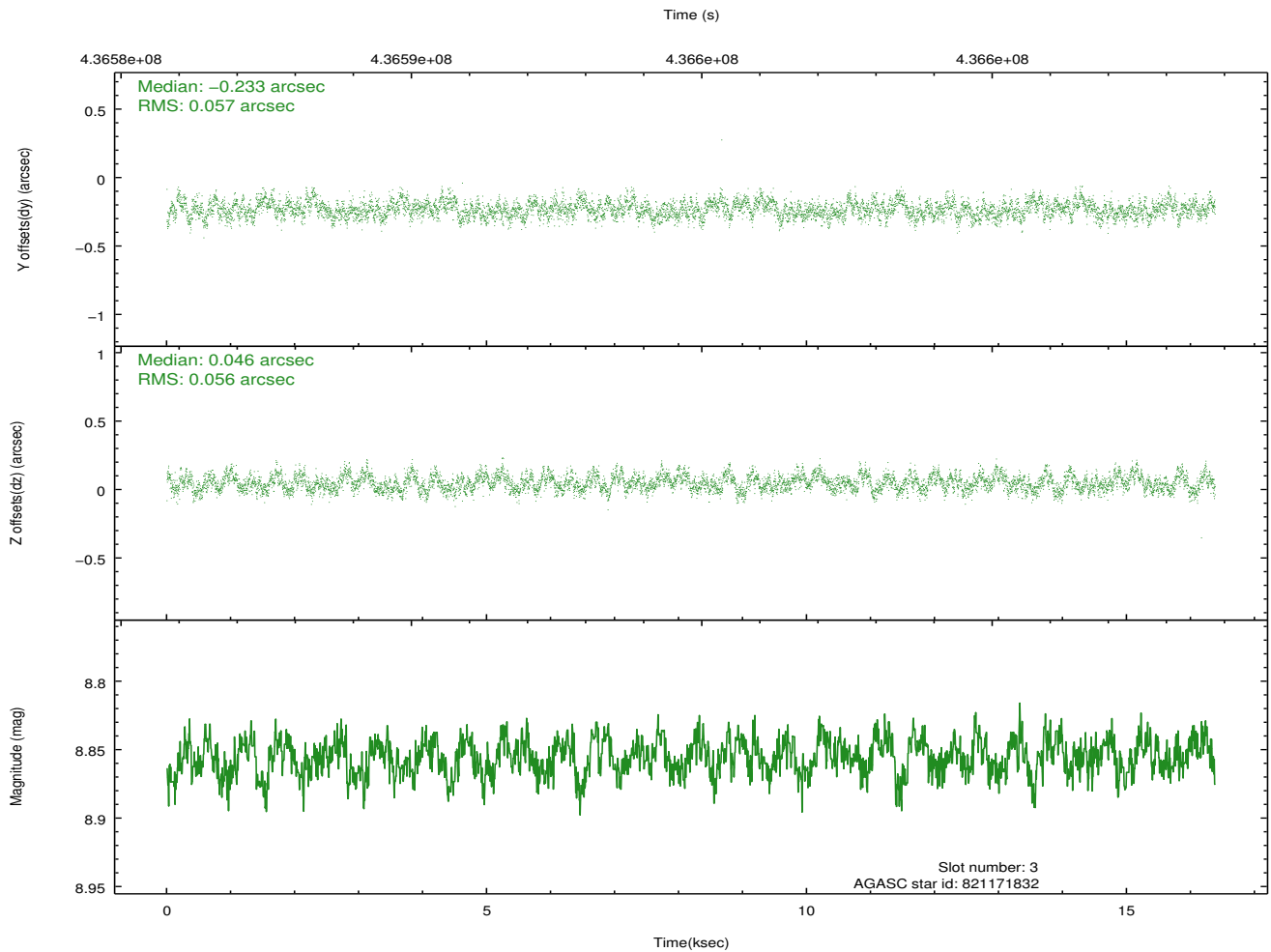
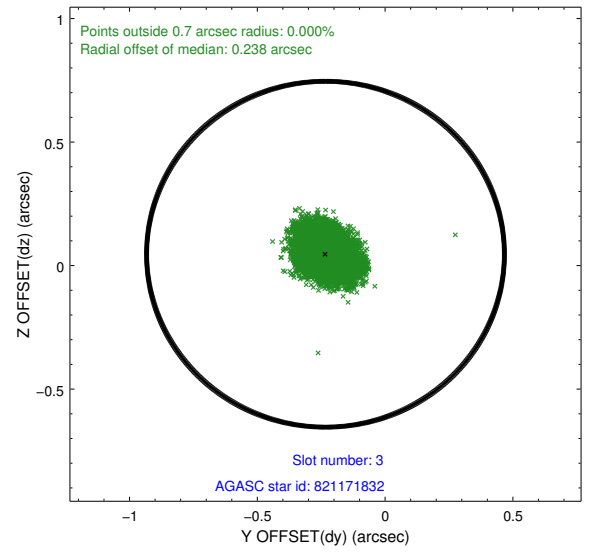
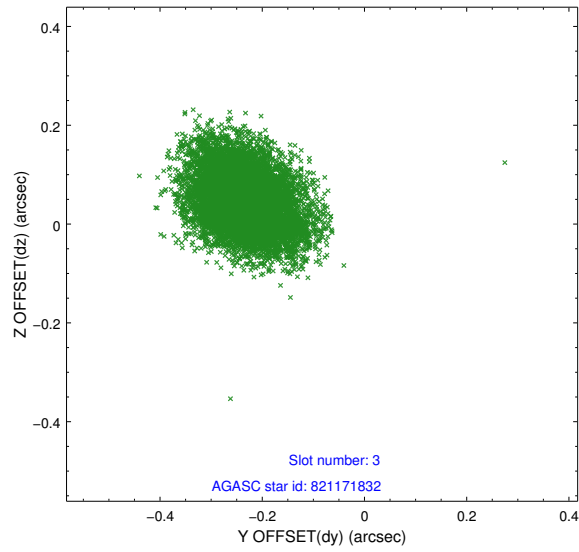


Slot Statistics

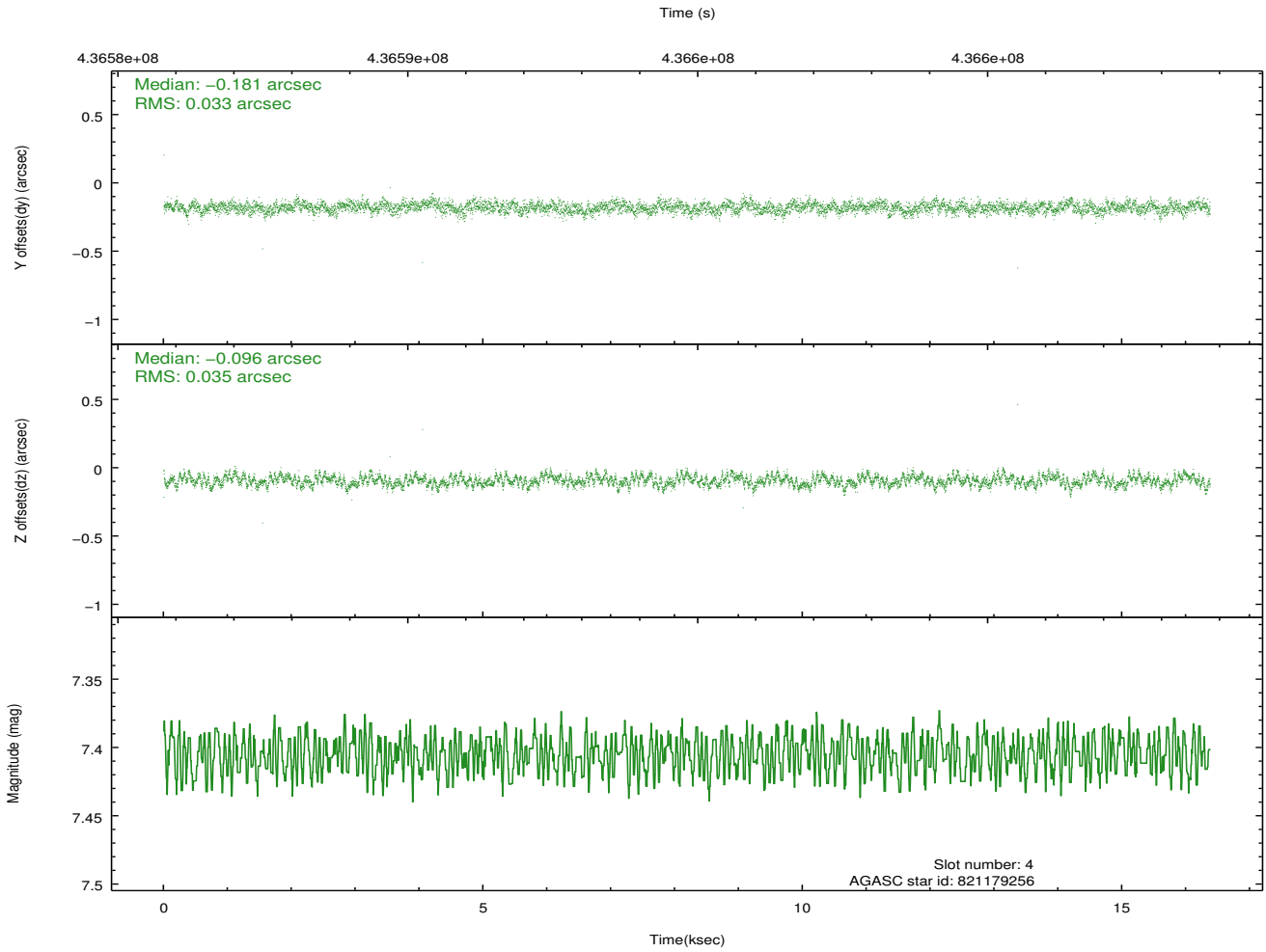
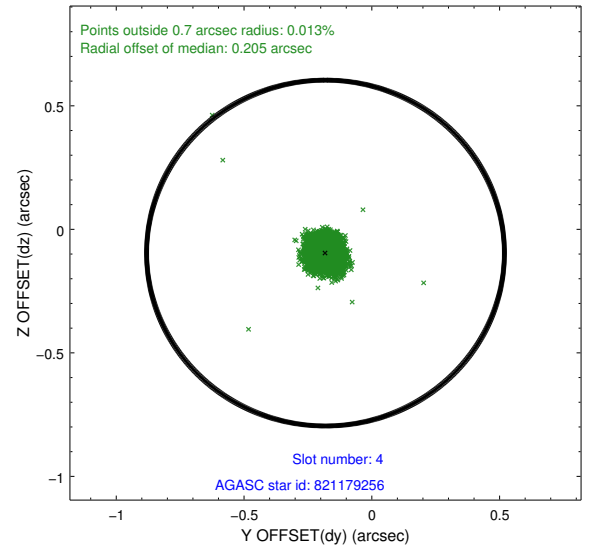
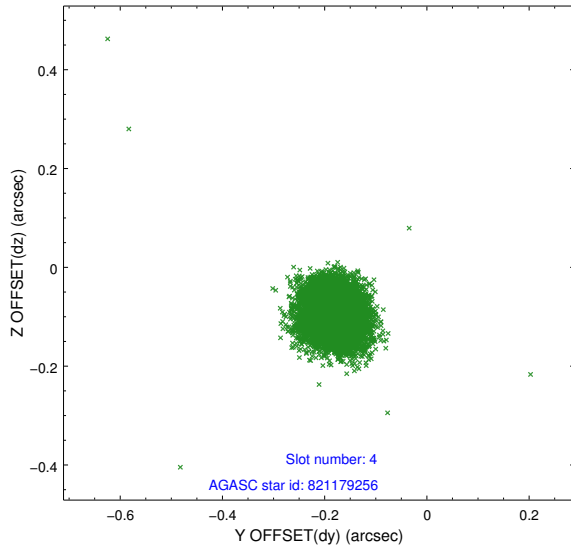
slot	status	id	mag	n_pts	med_dy	med_dz	dr1	dr2	ra	dec	mean_y	mean_z
0	FID	ACIS-S-1	6.99	3996	0.071	-0.056	0.006	0.010	0.000000	0.000000	933.51	-1732.11
1	FID	ACIS-S-5	7.02	3996	-0.168	0.032	0.006	0.011	0.000000	0.000000	-1815.57	165.27
2	FID	ACIS-S-6	7.12	3996	0.076	0.036	0.006	0.011	0.000000	0.000000	398.79	809.52
3	GUIDE	821171832	8.86	7989	-0.233	0.046	0.085	0.137	275.792275	-15.610164	-1485.11	995.68
4	GUIDE	821179256	7.40	7991	-0.181	-0.096	0.050	0.079	274.840900	-15.612800	-1879.73	-2279.40
5	GUIDE	821180448	7.18	7990	0.073	0.094	0.055	0.089	275.453560	-16.324585	921.85	-486.47
6	GUIDE	821183768	9.25	7985	0.236	-0.101	0.107	0.172	275.638665	-16.595886	1970.50	27.11
7	GUIDE	821169272	7.37	7990	0.104	0.057	0.051	0.084	275.312025	-16.375484	1044.22	-993.94

2.4 Star Slots

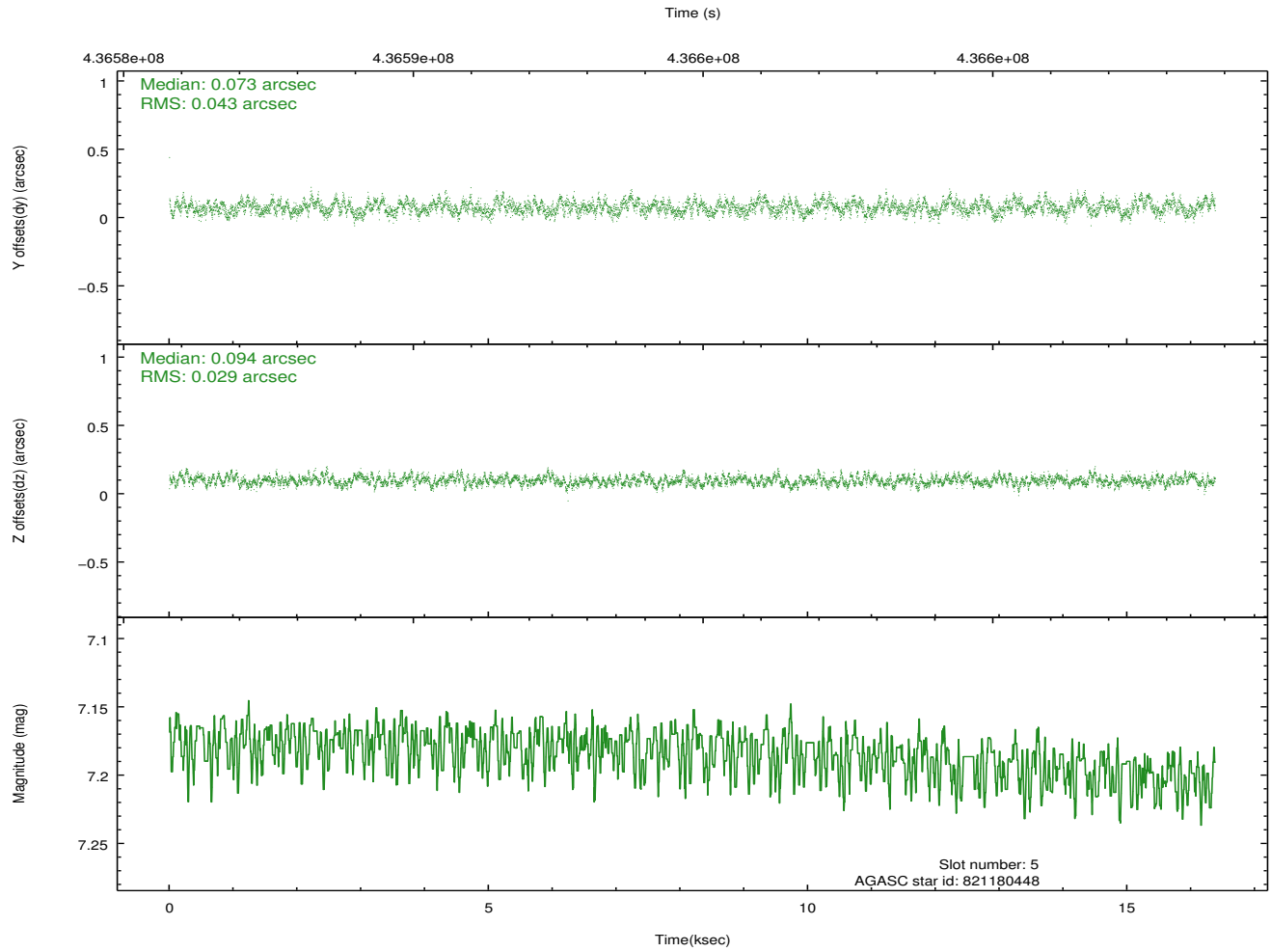
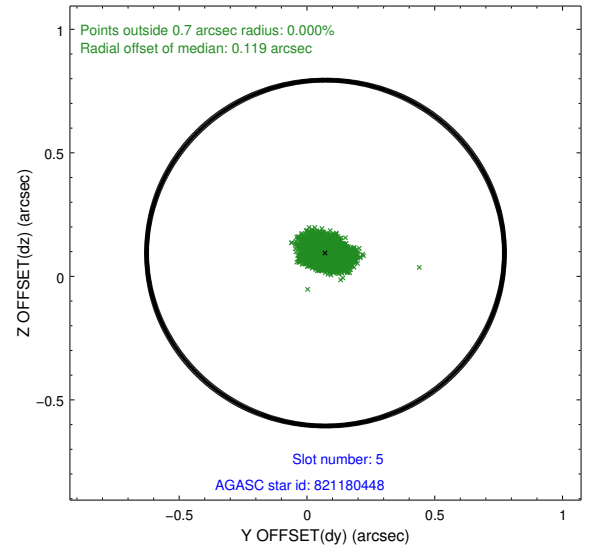
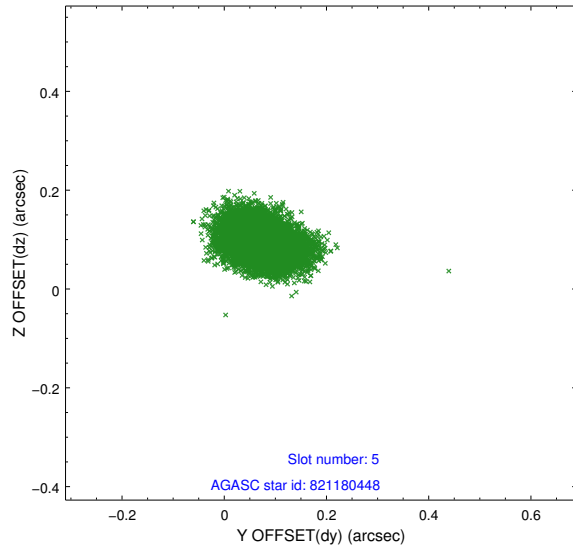
2.4.1 Slot 3



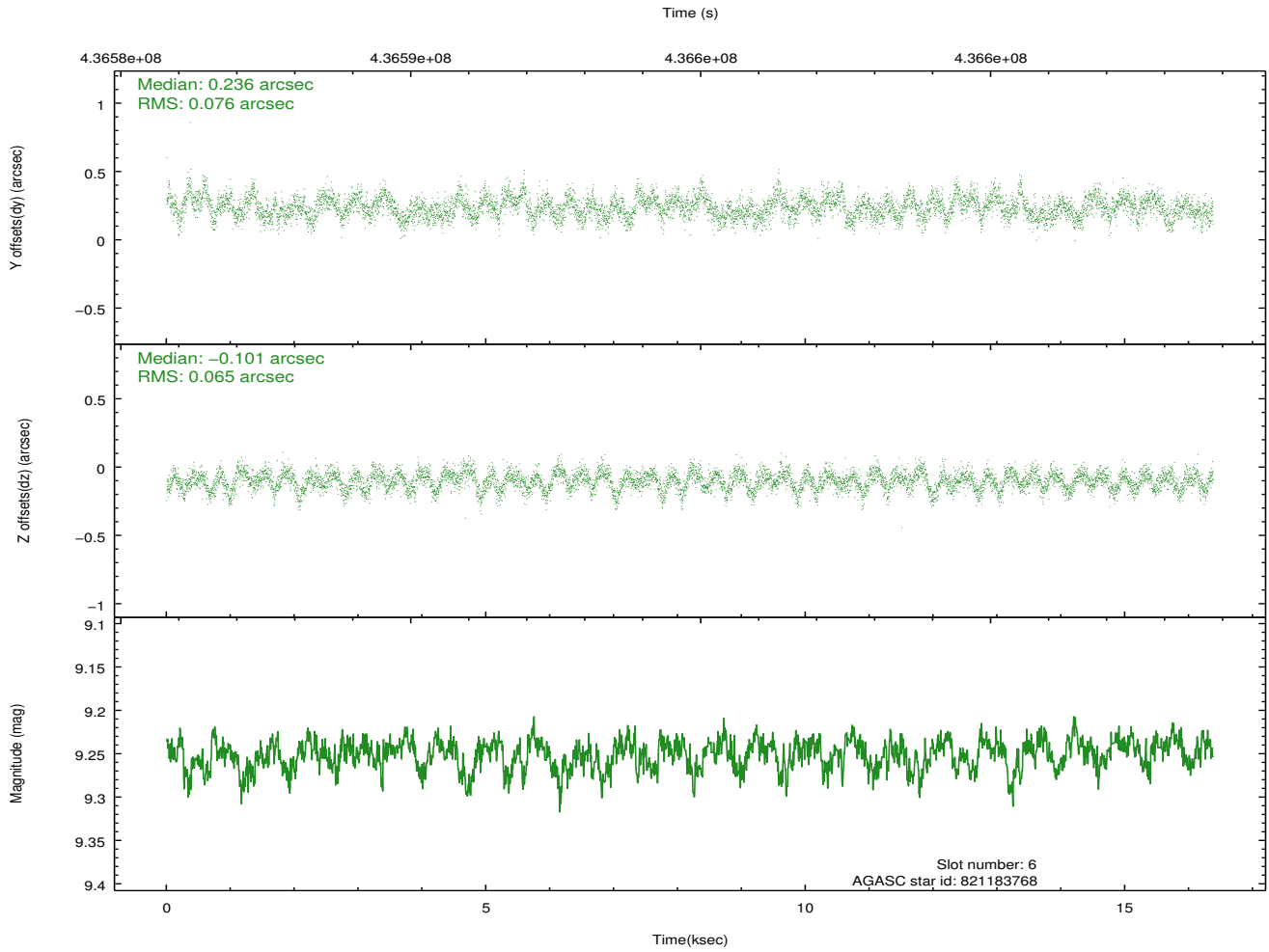
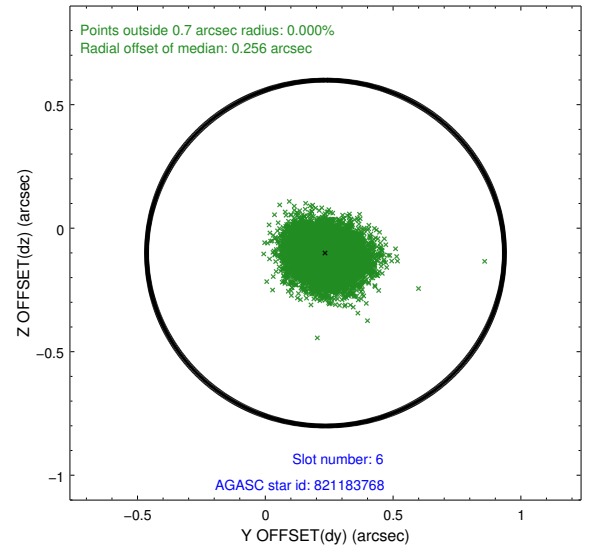
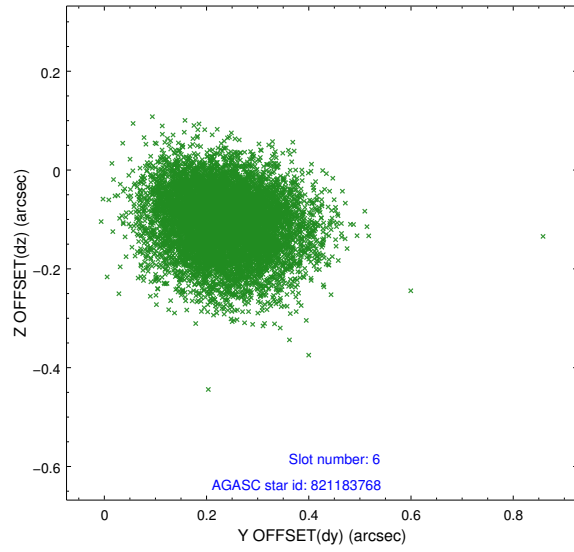
2.4.2 Slot 4



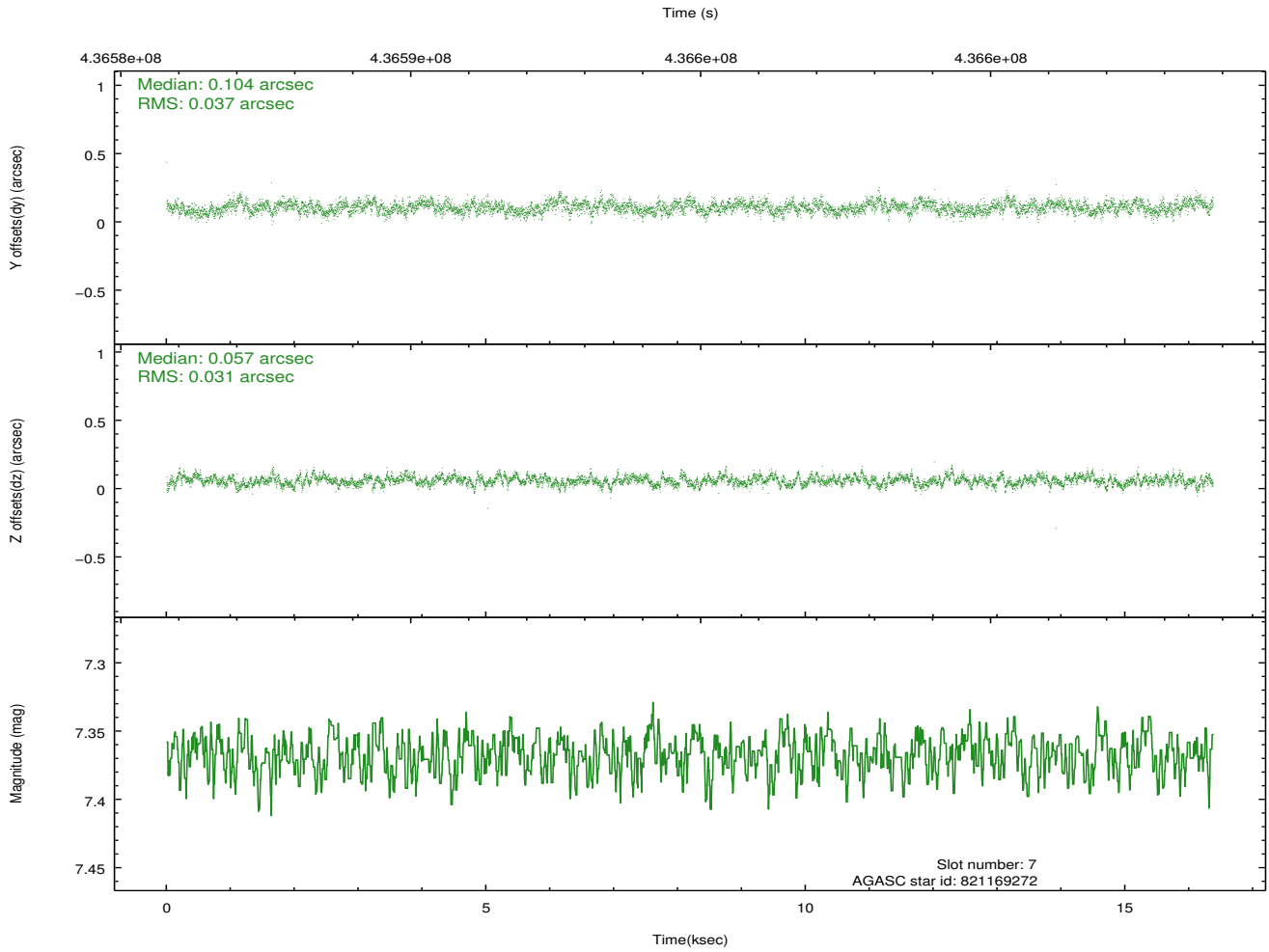
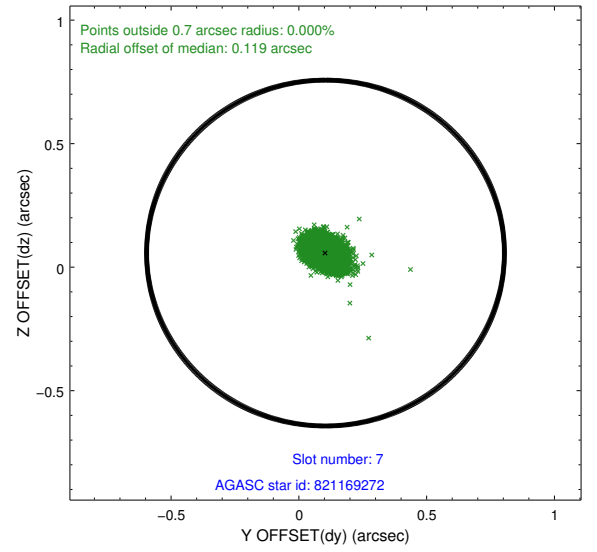
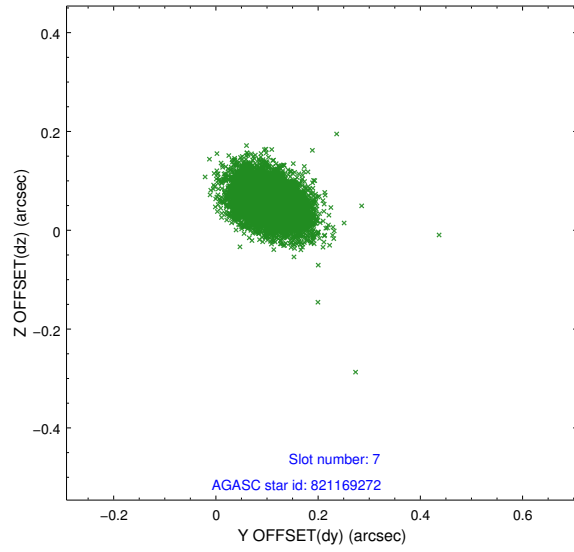
2.4.3 Slot 5



2.4.4 Slot 6

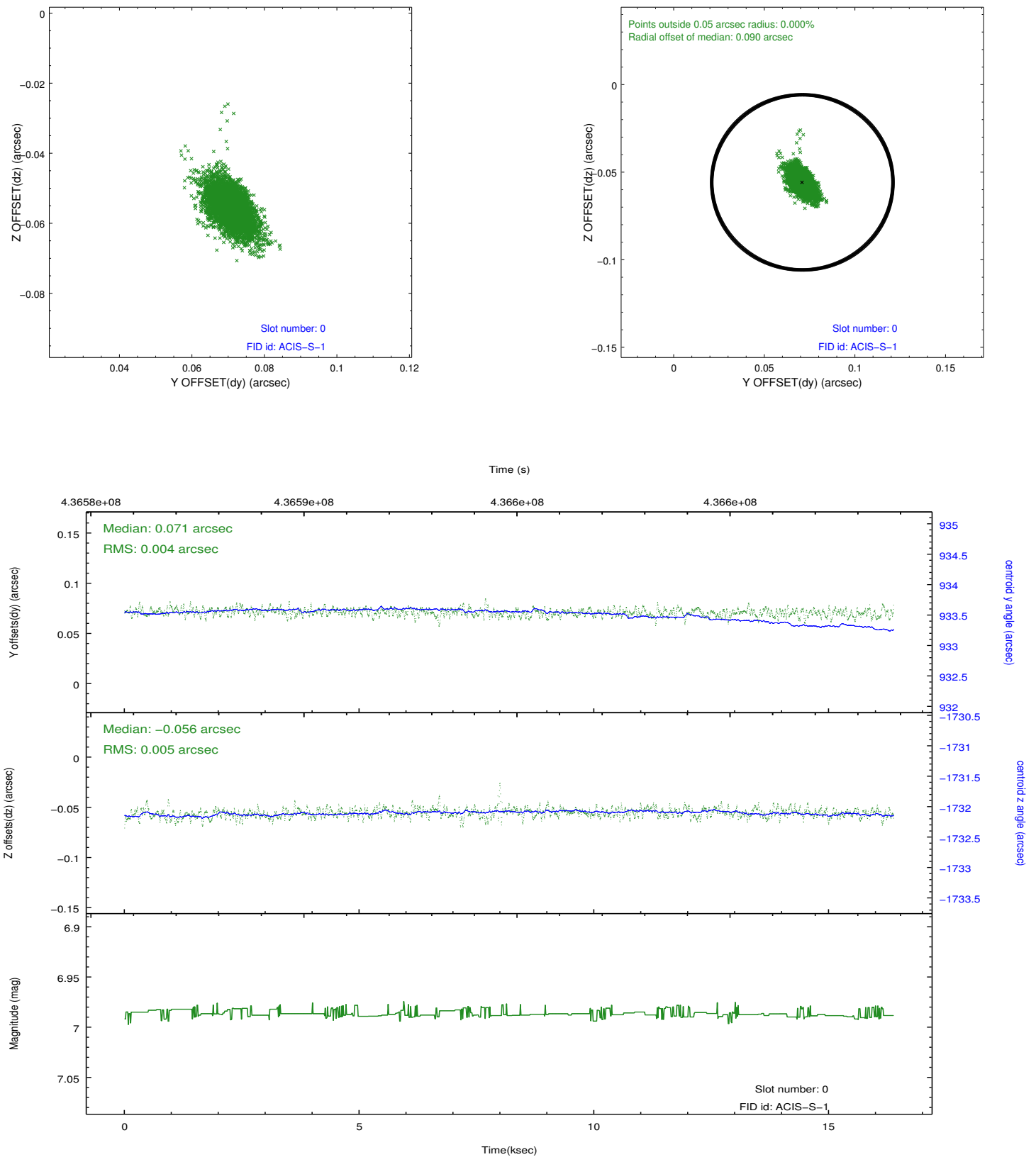


2.4.5 Slot 7

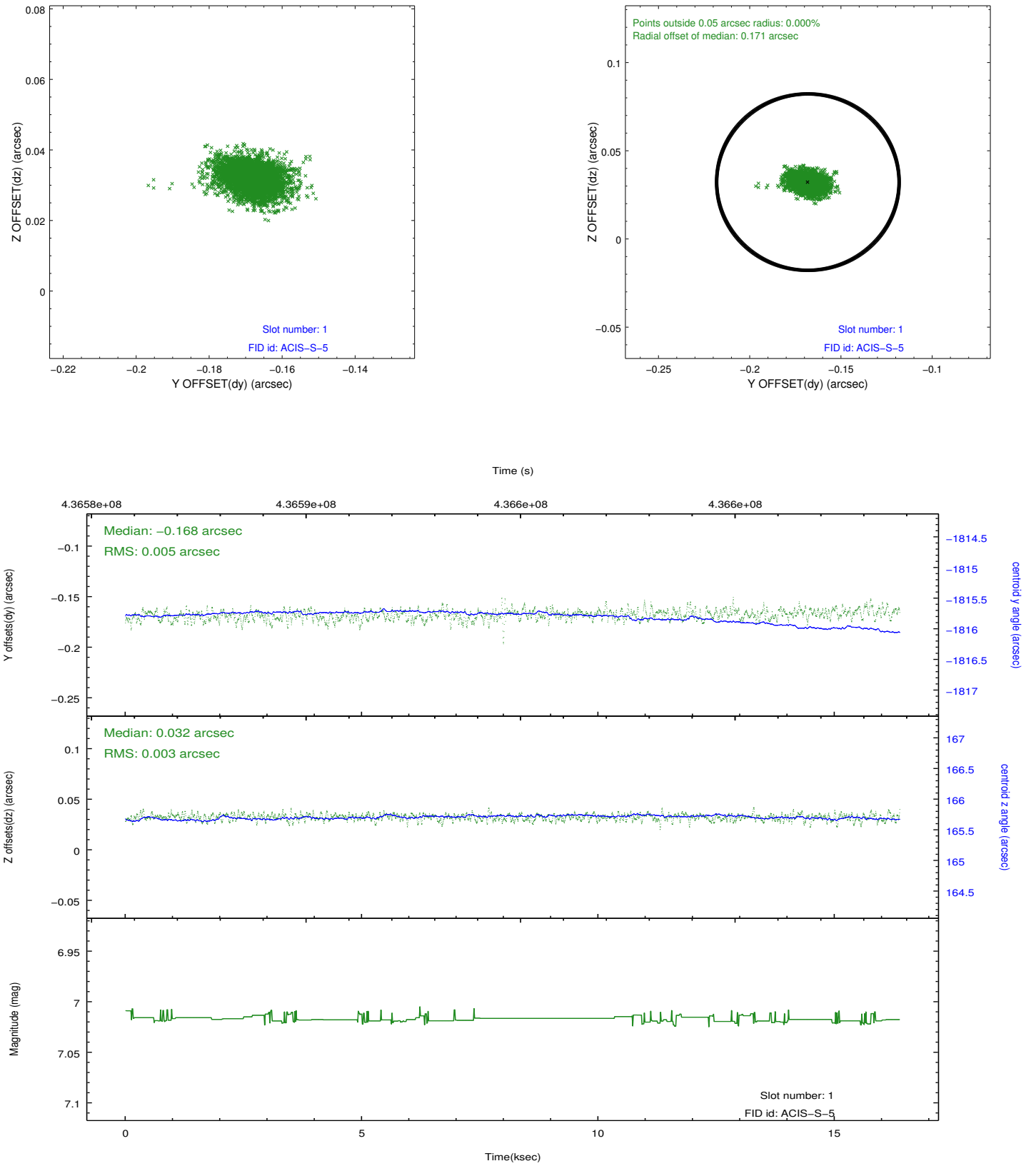


2.5 FID Slots

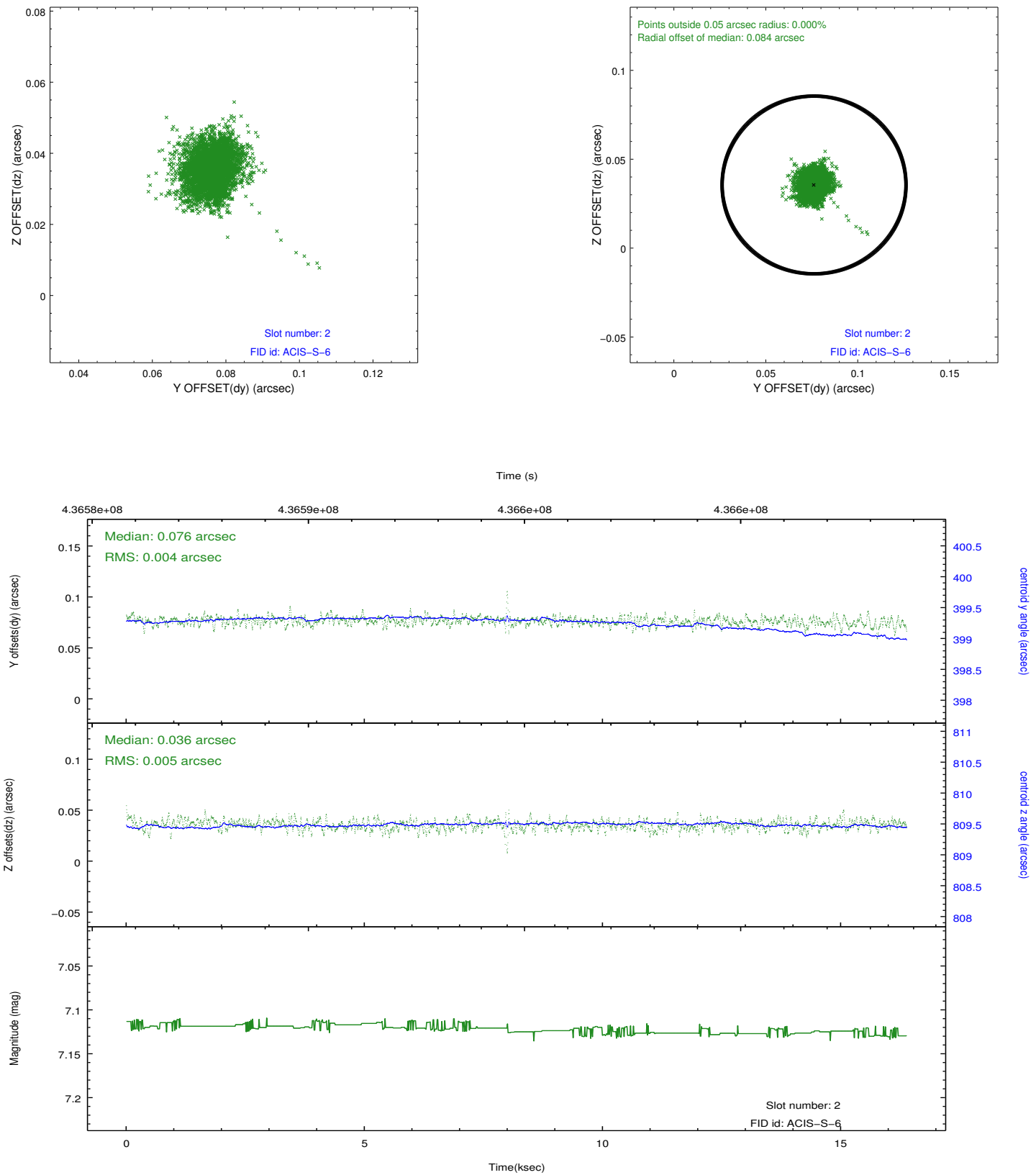
2.5.1 Slot 0



2.5.2 Slot 1



2.5.3 Slot 2



A Summary

A.1 Status

V&V Scientist	Joy Nichols
V&V Date (YYYY-MM-DD)	2012.02.29
V&V Edition	1
V&V Disposition and Status	OK
V&V Charge Time	16.2715

A.2 Comments