

V&V Reference Report

L2 ASCDS Version : 8.4.3

Observation 12465 - L2 Version 2
Chandra X-Ray Center

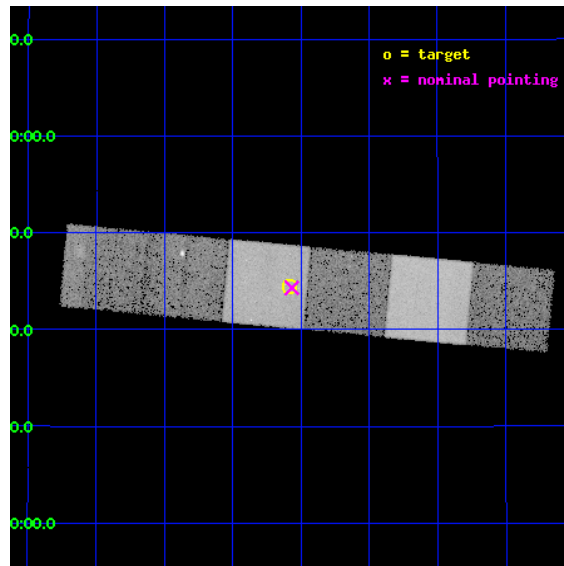
L2 Processing Date : Feb 13 2012

Contents

1	Front	2
2	OBI	3
2.1	OBI	3
2.1.1	Images	3
2.1.2	Bias	3
2.1.3	Parameters	4
2.1.4	Events	4
2.2	Compared Parameters	5
2.3	Aspect	6
2.4	Star Slots	9
2.4.1	Slot 3	9
2.4.2	Slot 4	10
2.4.3	Slot 5	11
2.4.4	Slot 6	12
2.4.5	Slot 7	13
2.5	FID Slots	14
2.5.1	Slot 0	14
2.5.2	Slot 1	15
2.5.3	Slot 2	16
A	Summary	17
A.1	Status	17
A.2	Comments	17

1 Front

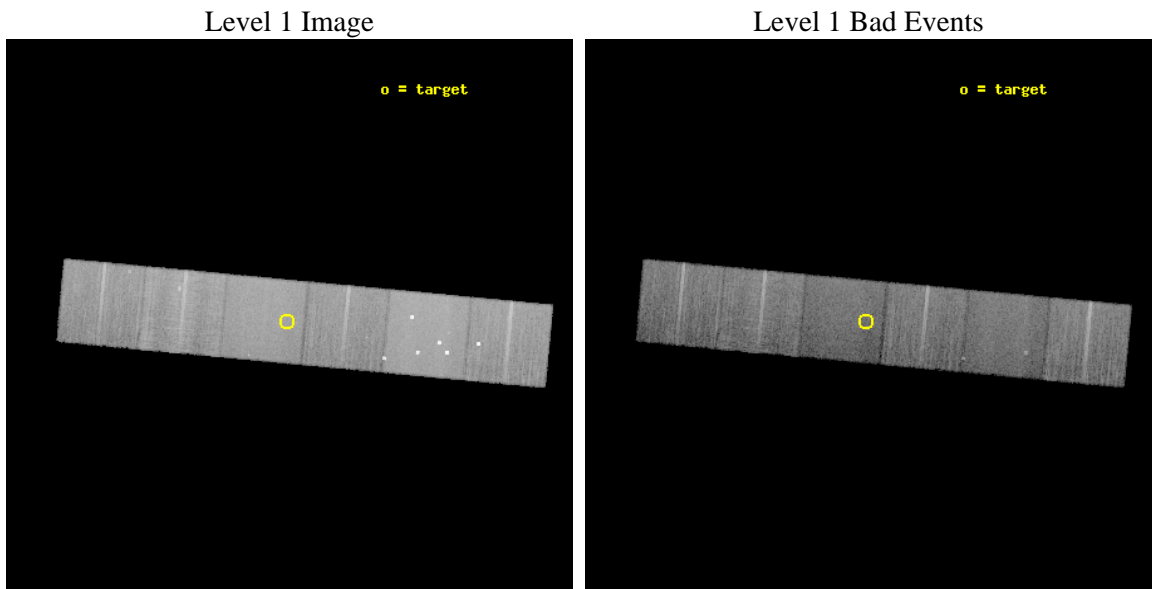
seq_num	401206	Sequence number
obs_id	12465	Observation id
title	First X-ray Observations of Four New Fermi-Associated Black-Widow Pulsars	Proposal title
observer	Prof. Maura McLaughlin	Principal investigator
object	J1810+17	Source name
dtcycle	0	
cycle	P	events from which exps? Prim/Second/Both
ra_targ	272.645833	Observer's specified target RA [deg]
dec_targ	17.741667	Observer's specified target Dec [deg]
ra_nom	272.64175712099	Nominal RA [deg]
dec_nom	17.738725899038	Nominal Dec [deg]
roll_nom	185.3071082527	Nominal Roll [deg]
revision	2	Processing version of data
ontime	20713.599922895	Sum of GTIs [s]
livetime	20451.311848439	Livetime [s]
ontime4	20713.599922895	Sum of GTIs [s]
ontime5	20713.599922895	Sum of GTIs [s]
ontime6	20713.599922895	Sum of GTIs [s]
ontime7	20713.599922895	Sum of GTIs [s]
ontime8	20713.599922895	Sum of GTIs [s]
ontime9	20713.599922895	Sum of GTIs [s]
l2events	209266	Number of level 2 events



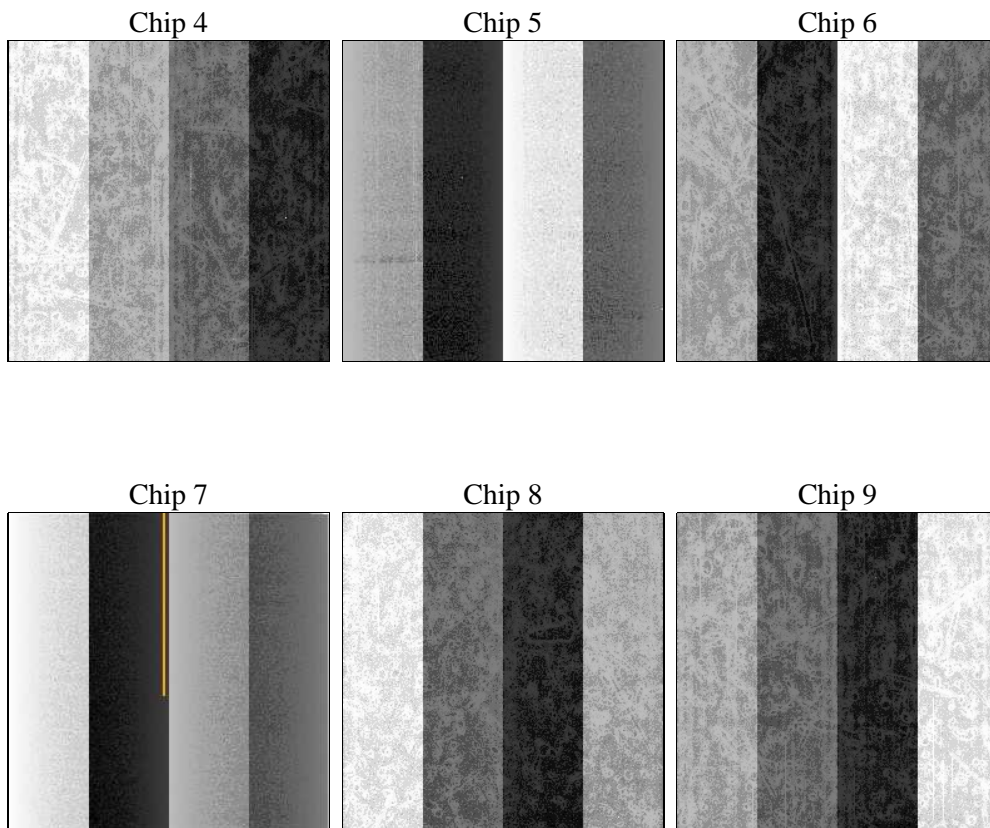
2 OBI

2.1 OBI

2.1.1 Images



2.1.2 Bias



2.1.3 Parameters

obi_num	0	Obi number	sched_exp_time	20664.335000	[s] Scheduled observation exposure time
ascdsver	8.4.3	Processing system revision	ontime	20713.599922895	Sum of GTIs [s]
caldsver	4.4.7	 	ontime4	20713.599922895	Sum of GTIs [s]
date	2012-02-13T12:18:06	Date and time of file creation	ontime5	20713.599922895	Sum of GTIs [s]
revision	2	Processing version of data	ontime6	20713.599922895	Sum of GTIs [s]
			ontime7	20713.599922895	Sum of GTIs [s]
			ontime8	20713.599922895	Sum of GTIs [s]
			ontime9	20713.599922895	Sum of GTIs [s]
			l1events	944832	Number of level 1 events

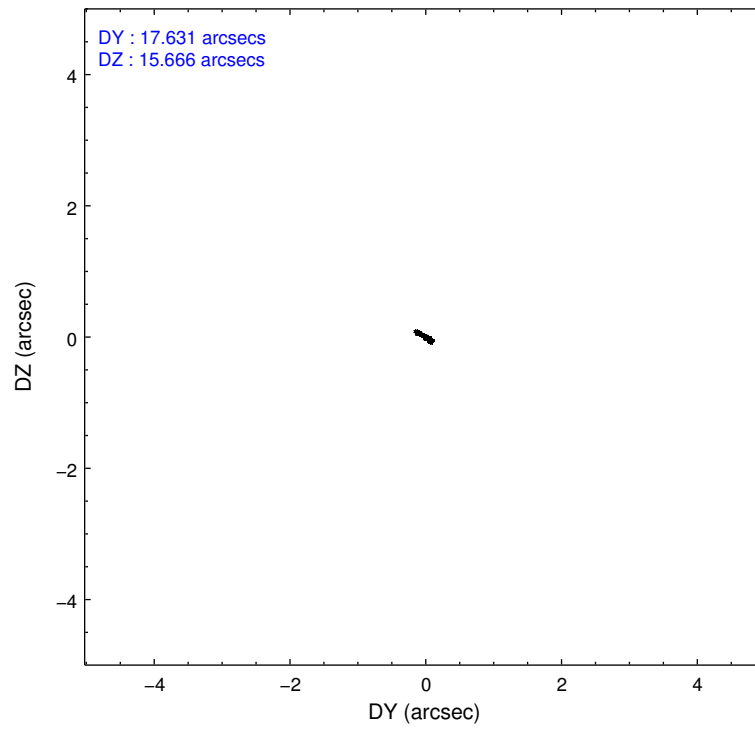
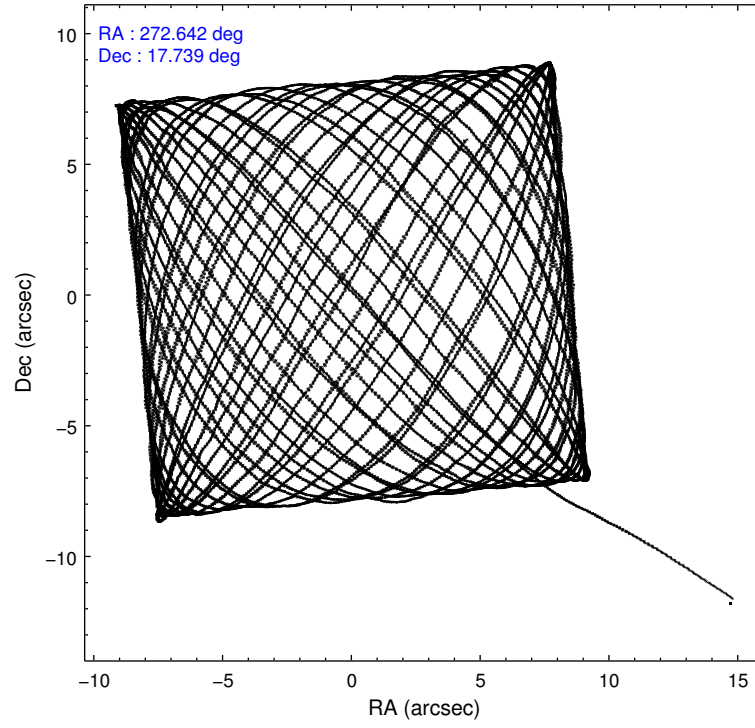
2.1.4 Events

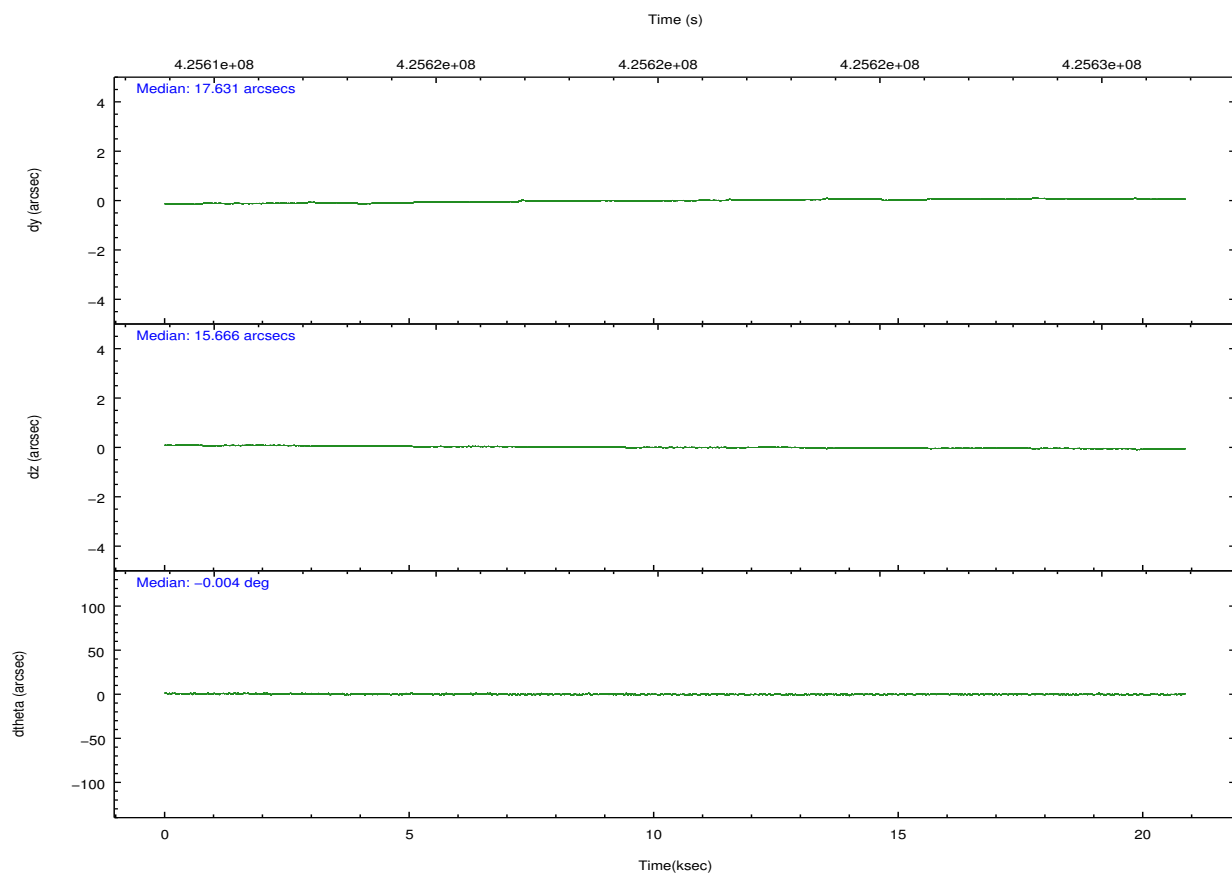
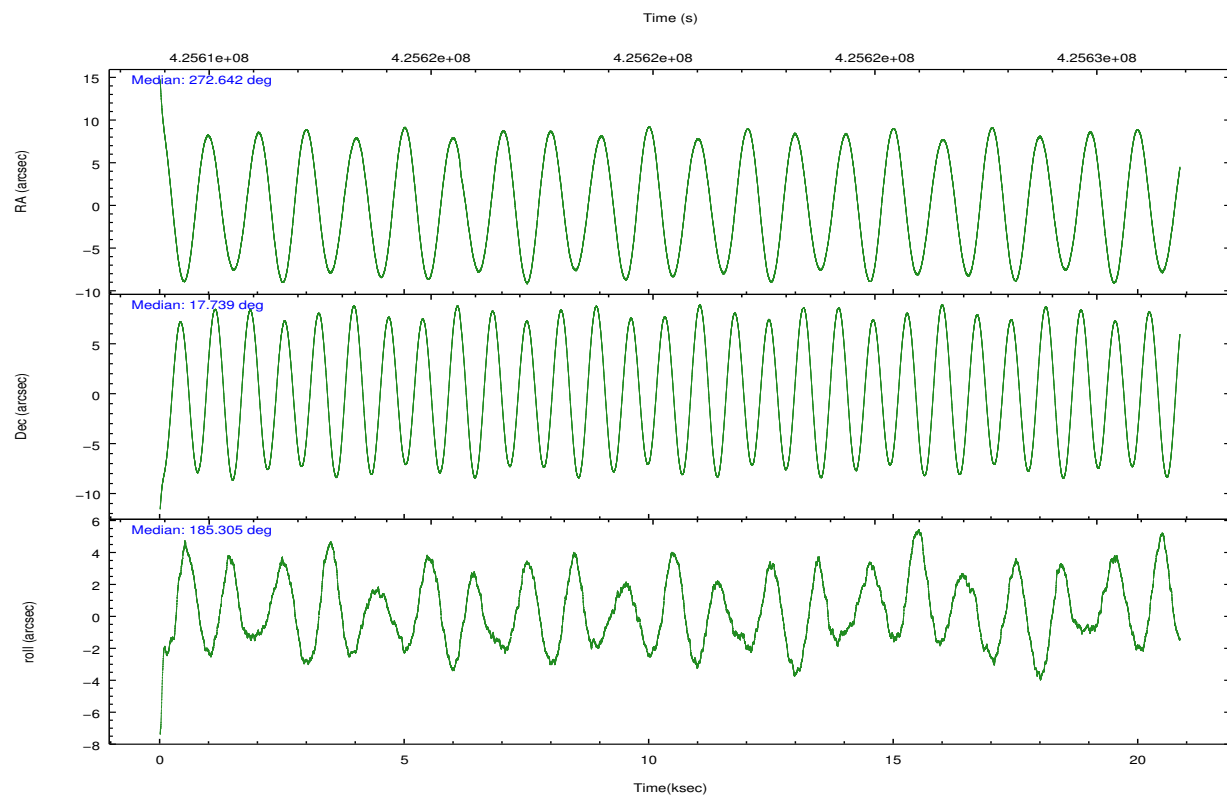
	ccd 4	ccd 5	ccd 6	ccd 7	ccd 8	ccd 9		ccd 4	ccd 5	ccd 6	ccd 7	ccd 8	ccd 9
level 1 events	148881	215900	126623	160564	165898	126966	grade 0 events	11141	23672	5070	6382	11993	6085
rejected events	128443	100133	112094	89855	124212	111025		7%	10%	4%	3%	7%	4%
rejected %	86%	46%	88%	55%	74%	87%	grade 1 events	130	912	55	191	118	94
								0%	0%	0%	0%	0%	0%
							grade 2 events	3624	34097	3243	14414	10044	3356
								2%	15%	2%	8%	6%	2%
							grade 3 events	1573	3593	1463	6092	4295	1616
								1%	1%	1%	3%	2%	1%
							grade 4 events	1559	3222	1462	6100	4030	1578
								1%	1%	1%	3%	2%	1%
							grade 5 events	5814	14138	6024	16612	8805	6751
								3%	6%	4%	10%	5%	5%
							grade 6 events	2548	51226	3296	37747	11350	3308
								1%	23%	2%	23%	6%	2%
							grade 7 events	122492	85040	106010	73026	115263	104178
								82%	39%	83%	45%	69%	82%

2.2 Compared Parameters

Parameter	Planned	Actual	Parameter	Planned	Actual
Instrument	ACIS	ACIS	Obspar format version number	7	7
Detector	ACIS-456789	ACIS-456789	Obspar file type	PREDICTED	ACTUAL
Grating	NONE	NONE	Obspar update status	NONE	UPDATED
Data mode	FAINT	FAINT	Number of optional ACIS chips dropped	0	0
Observation mode	POINTING	POINTING	On-chip summing requested	N	N
[deg] Pointing RA	272.664971	272.6417571209884	Subarray requested	NONE	NONE
[deg] Pointing Dec	17.754856	17.73872589903829	Alternating exposures requested	N	N
[deg] Pointing Roll	185.143400	185.3071082526997	[s] Primary exposure time	0.000000	3.2
[mm] SIM focus pos	-0.684267	-0.6828225247311905			
[mm] SIM defocus	0	0.001444936568705701			
[mm] SIM translation stage pos	-190.132523	-190.1425803651734			
[mm] SIM translation stage offset	0	0.01005778216563158			
[s] Observation start time (MET)	425610151.184000	425609111.37011			
Observation start date	2011-06-28T01:01:25	2011-06-28T00:45:11			
[s] Observation end time (MET)	425630815.184000	425631040.73375			
Observation end date	2011-06-28T06:45:49	2011-06-28T06:50:40			
Read mode	TIMED	TIMED			

2.3 Aspect



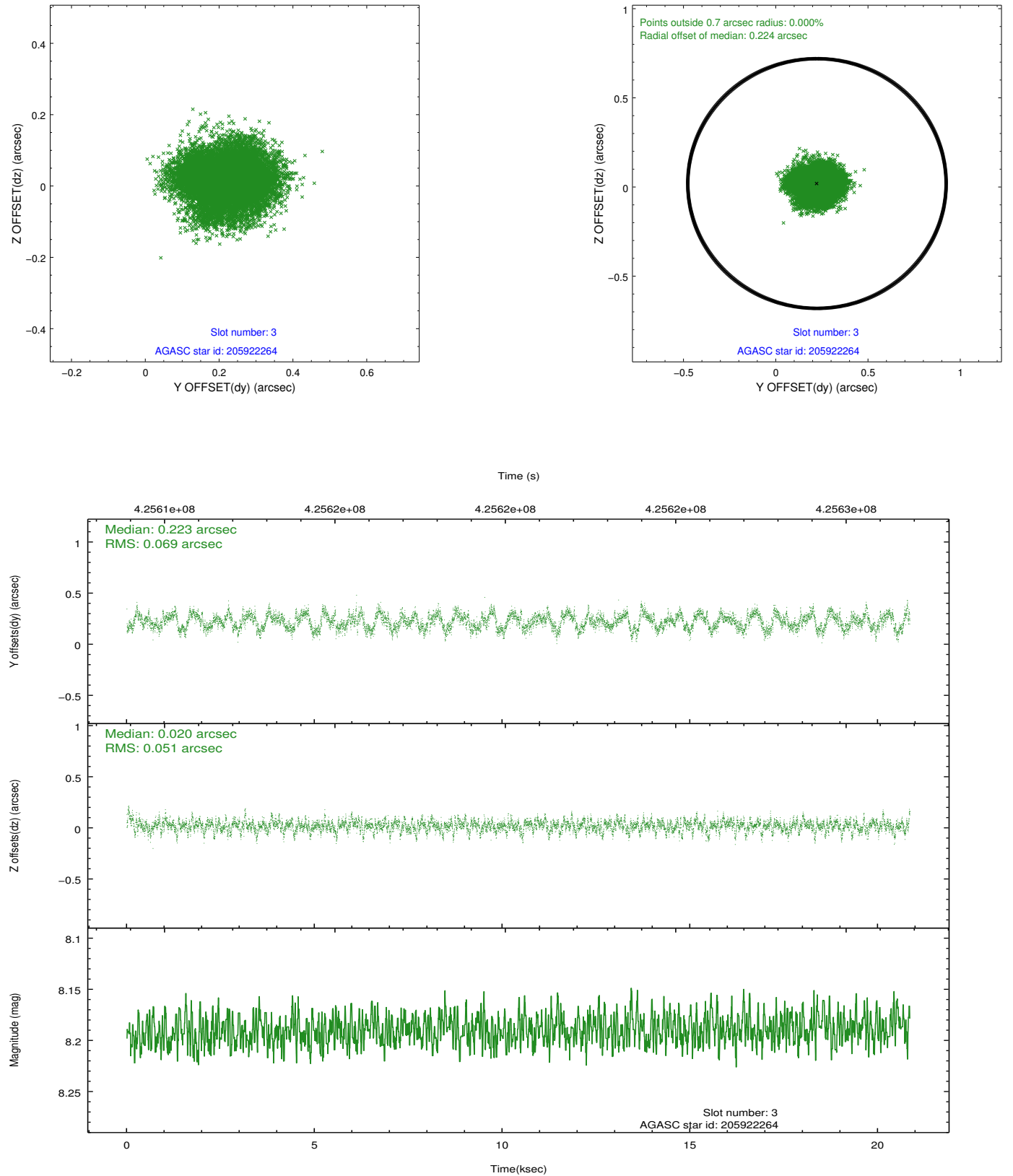


Slot Statistics

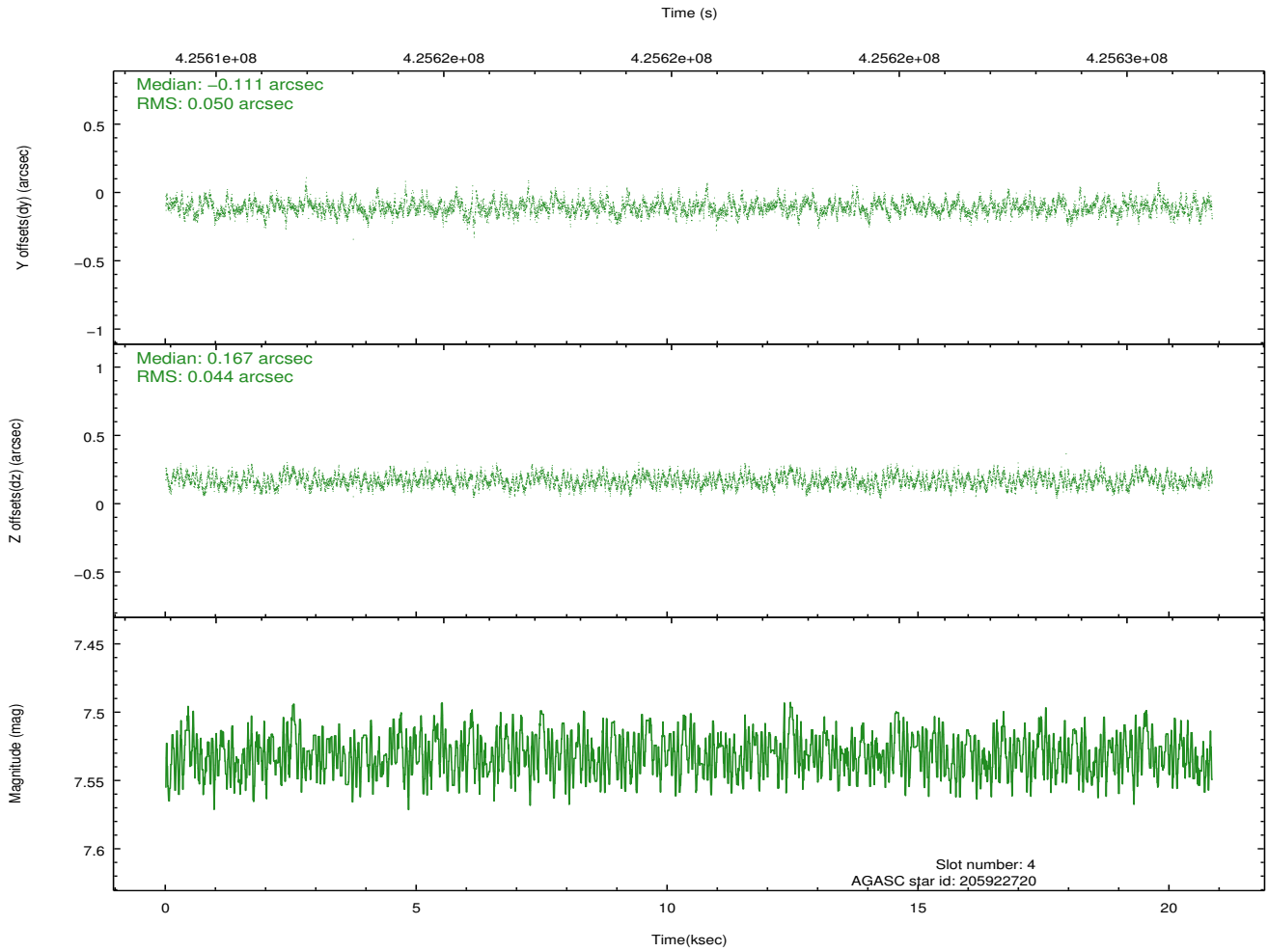
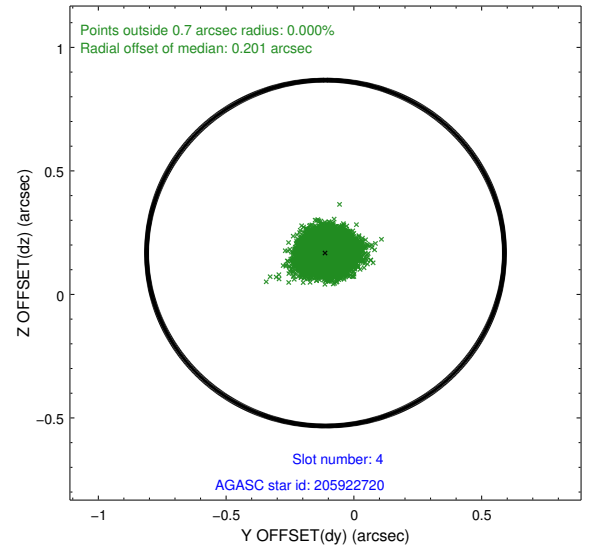
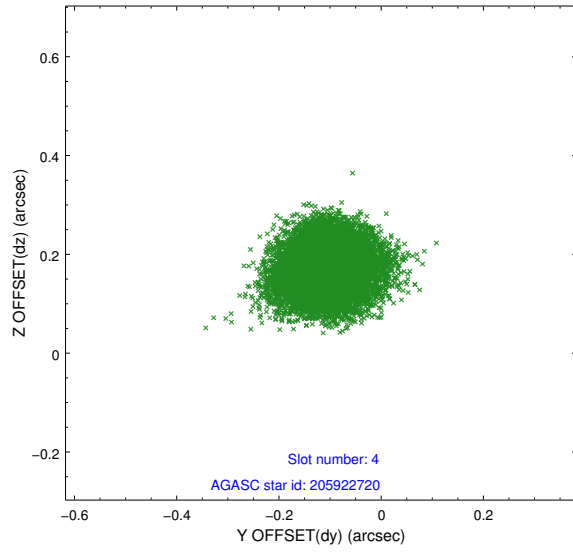
slot	status	id	mag	n_pts	med_dy	med_dz	dr1	dr2	ra	dec	mean_y	mean_z
0	FID	ACIS-S-2	7.02	5086	-0.123	-0.091	0.006	0.010	0.000000	0.000000	-770.79	-1737.11
1	FID	ACIS-S-4	7.11	5086	0.181	0.041	0.006	0.010	0.000000	0.000000	2142.72	171.32
2	FID	ACIS-S-6	7.24	5086	-0.085	0.058	0.007	0.011	0.000000	0.000000	391.46	808.93
3	GUIDE	205922264	8.19	10171	0.223	0.020	0.093	0.142	272.652392	18.288762	-129.04	-1918.44
4	GUIDE	205922720	7.53	10171	-0.111	0.167	0.071	0.113	273.134625	18.027461	-1689.33	-835.53
5	GUIDE	205925360	9.35	10147	0.053	-0.063	0.114	0.181	272.179472	17.623185	1701.42	320.70
6	GUIDE	205925840	9.17	10160	-0.218	-0.005	0.108	0.172	272.581006	17.394934	403.65	1264.69
7	GUIDE	205925912	9.15	10163	0.051	-0.111	0.102	0.158	272.262748	17.560500	1437.64	571.49

2.4 Star Slots

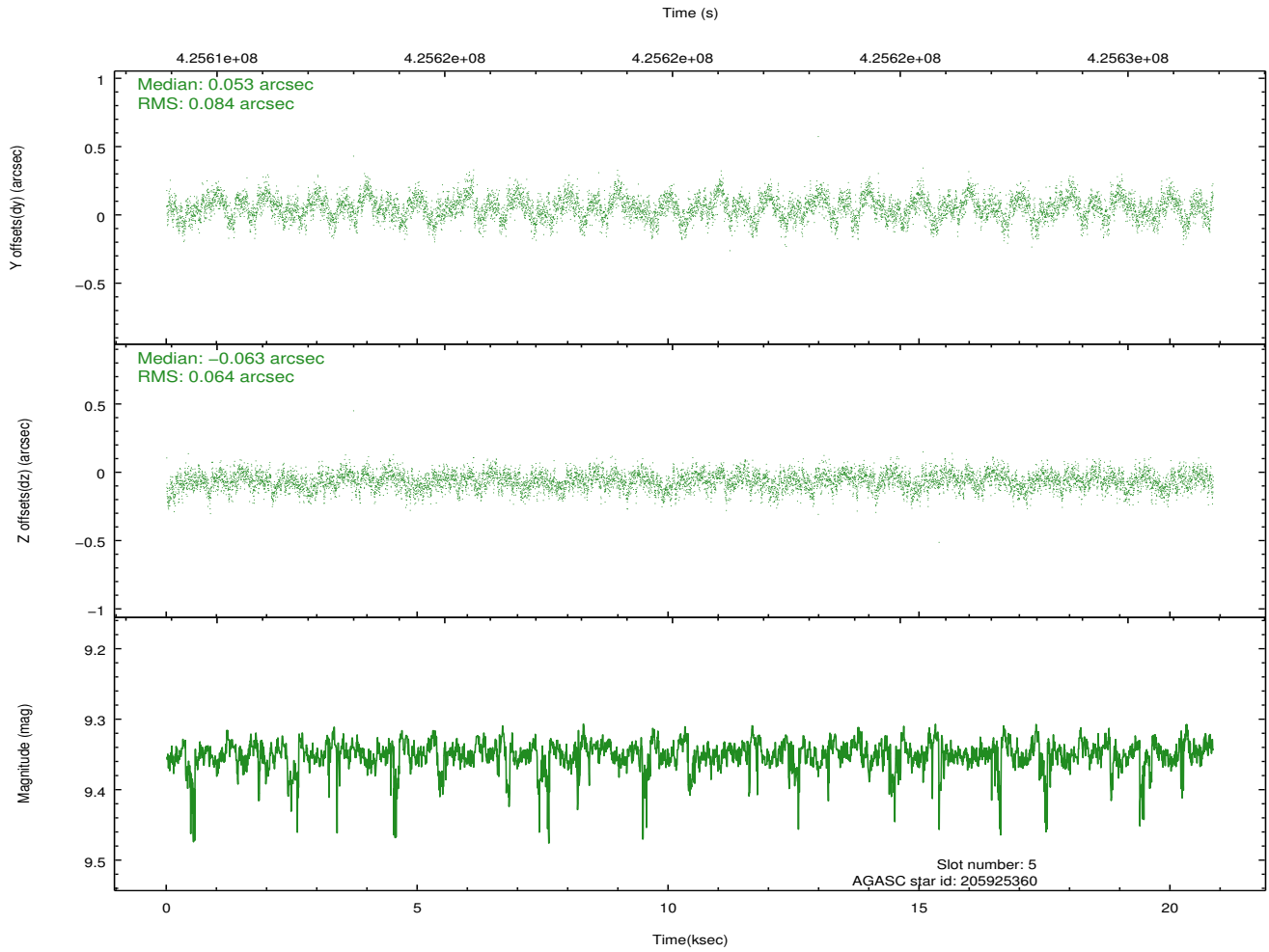
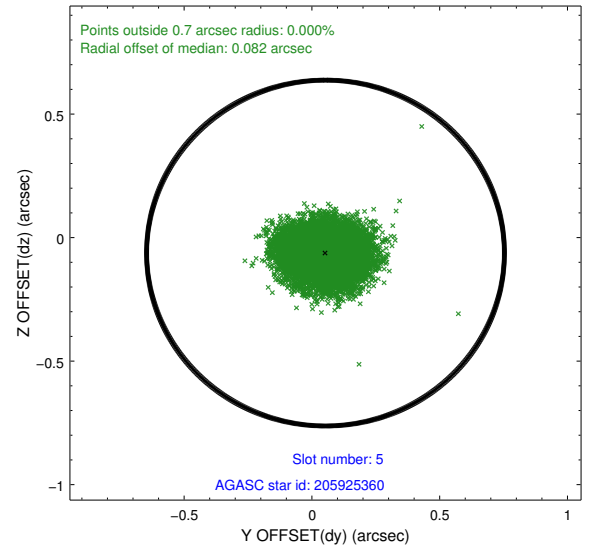
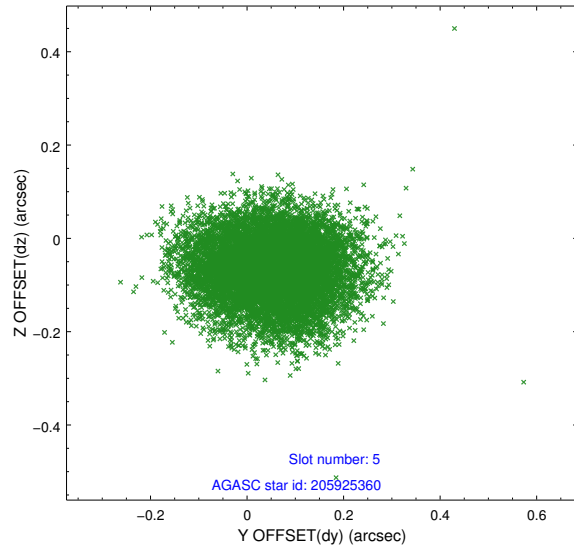
2.4.1 Slot 3



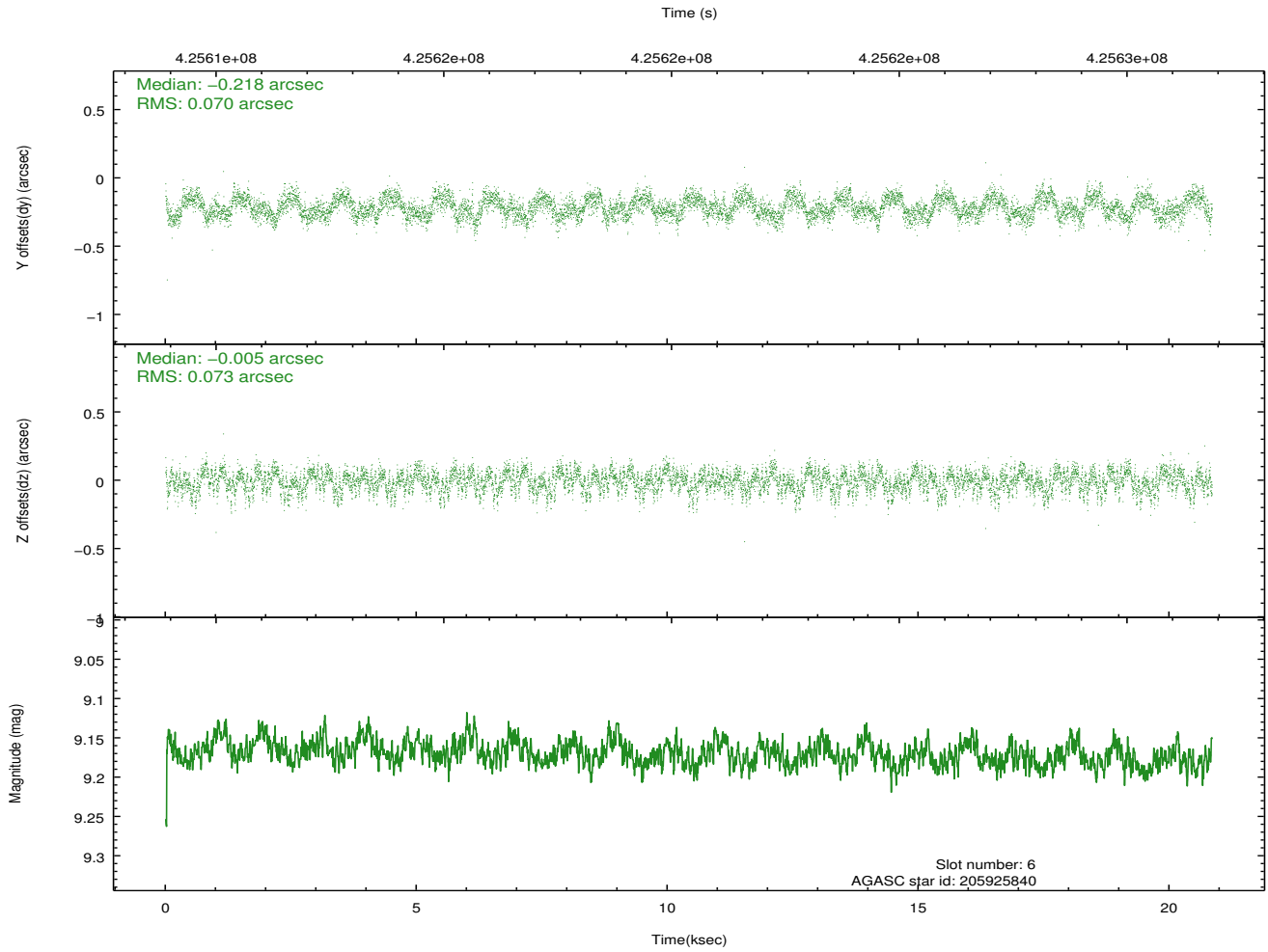
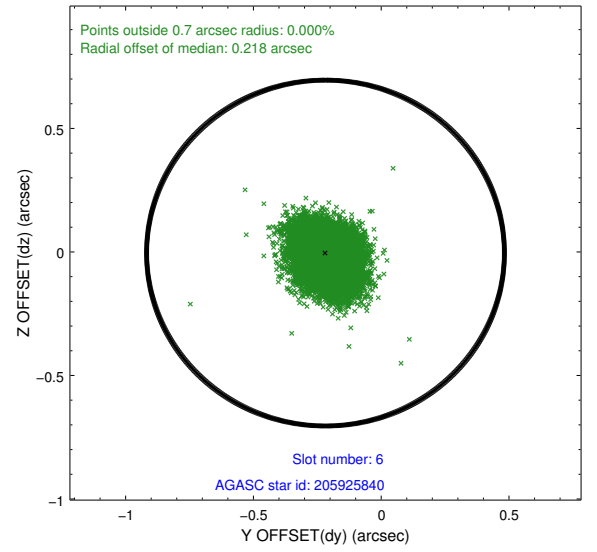
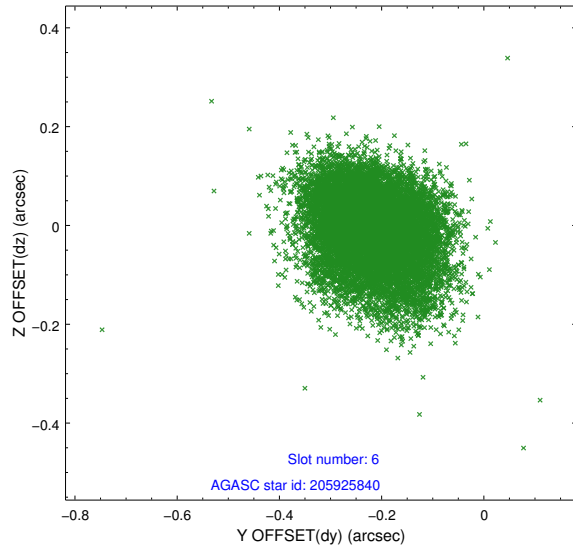
2.4.2 Slot 4



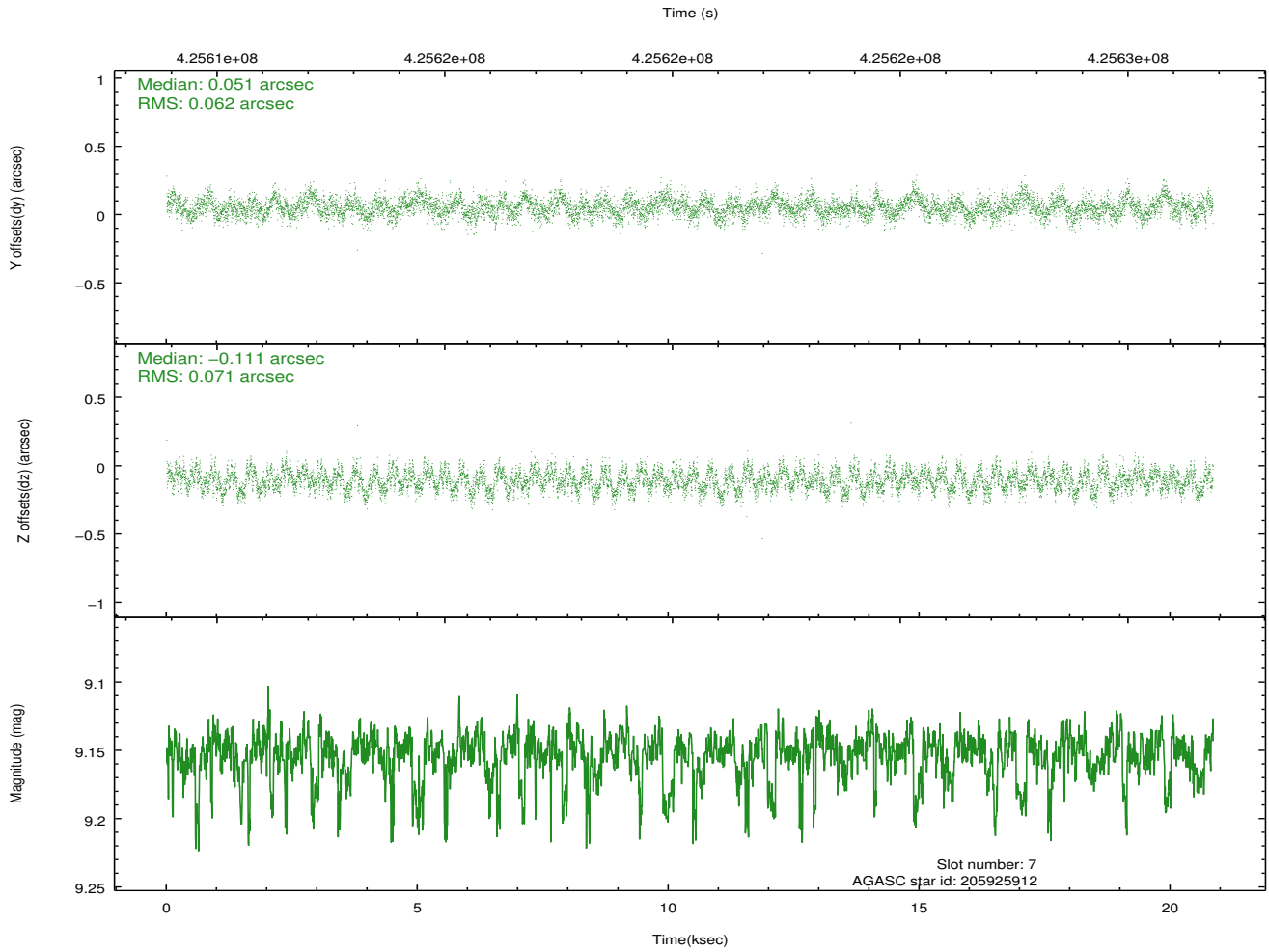
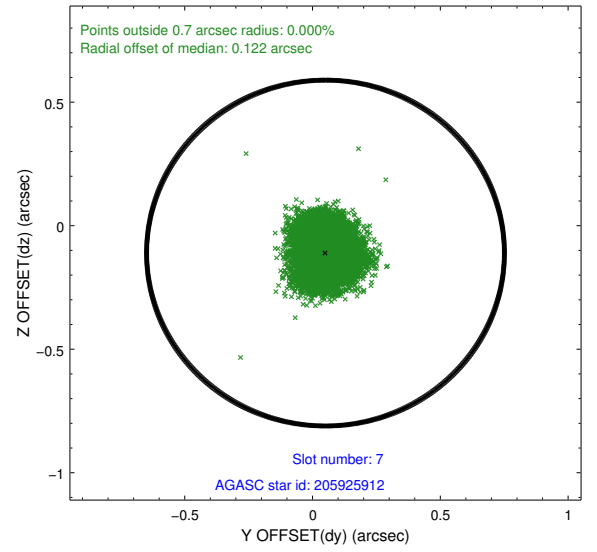
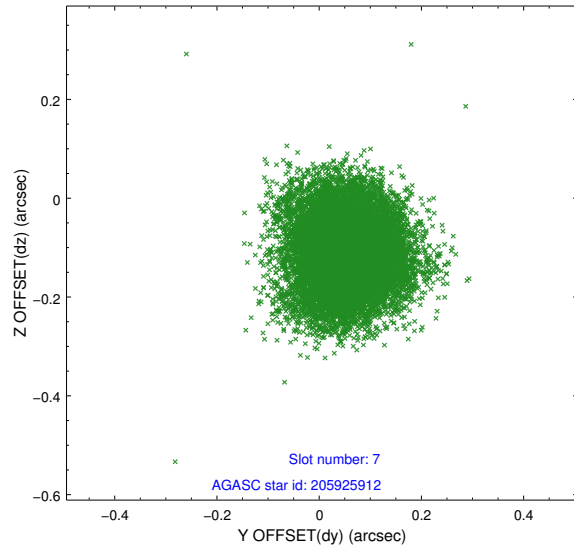
2.4.3 Slot 5



2.4.4 Slot 6

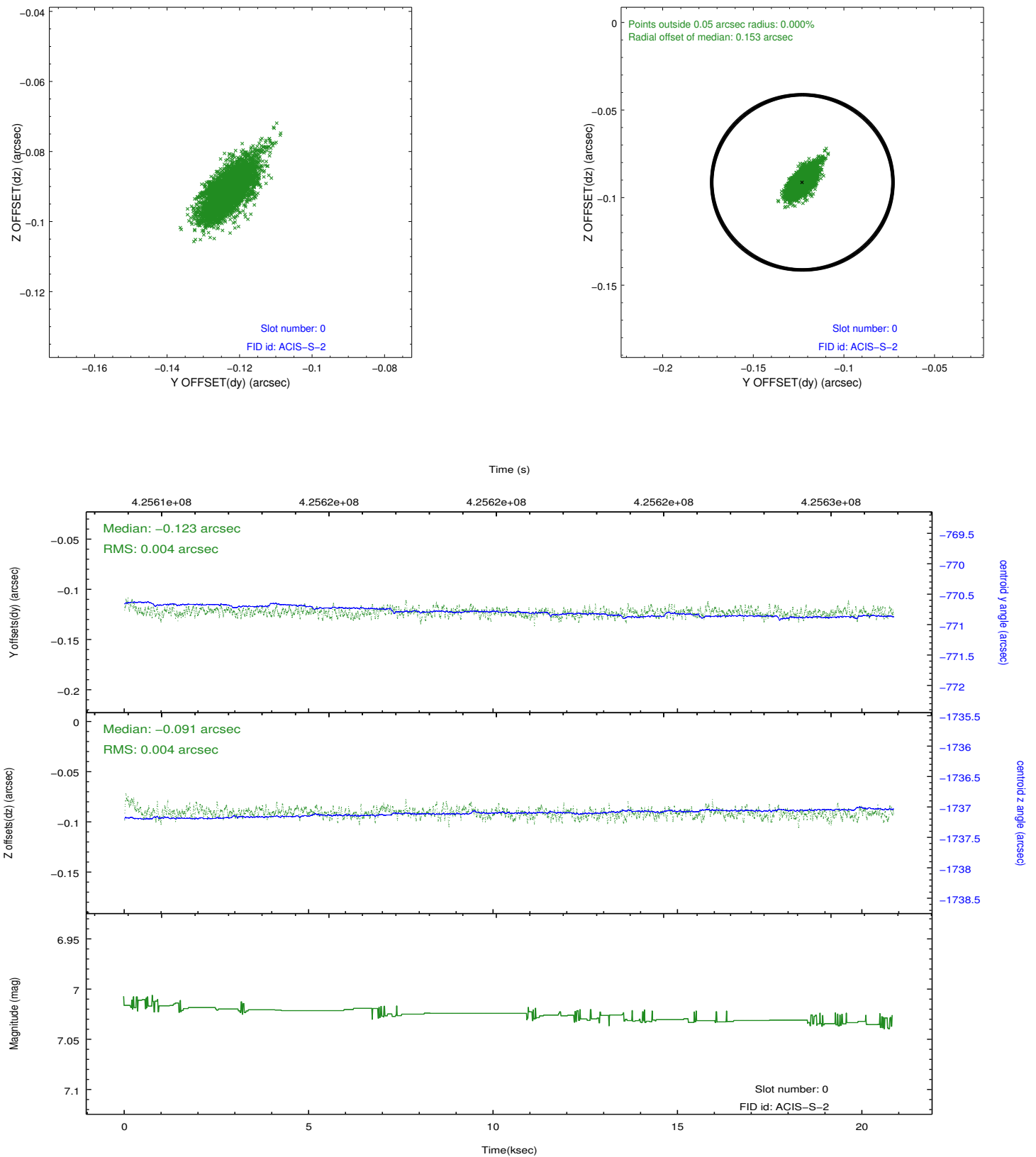


2.4.5 Slot 7

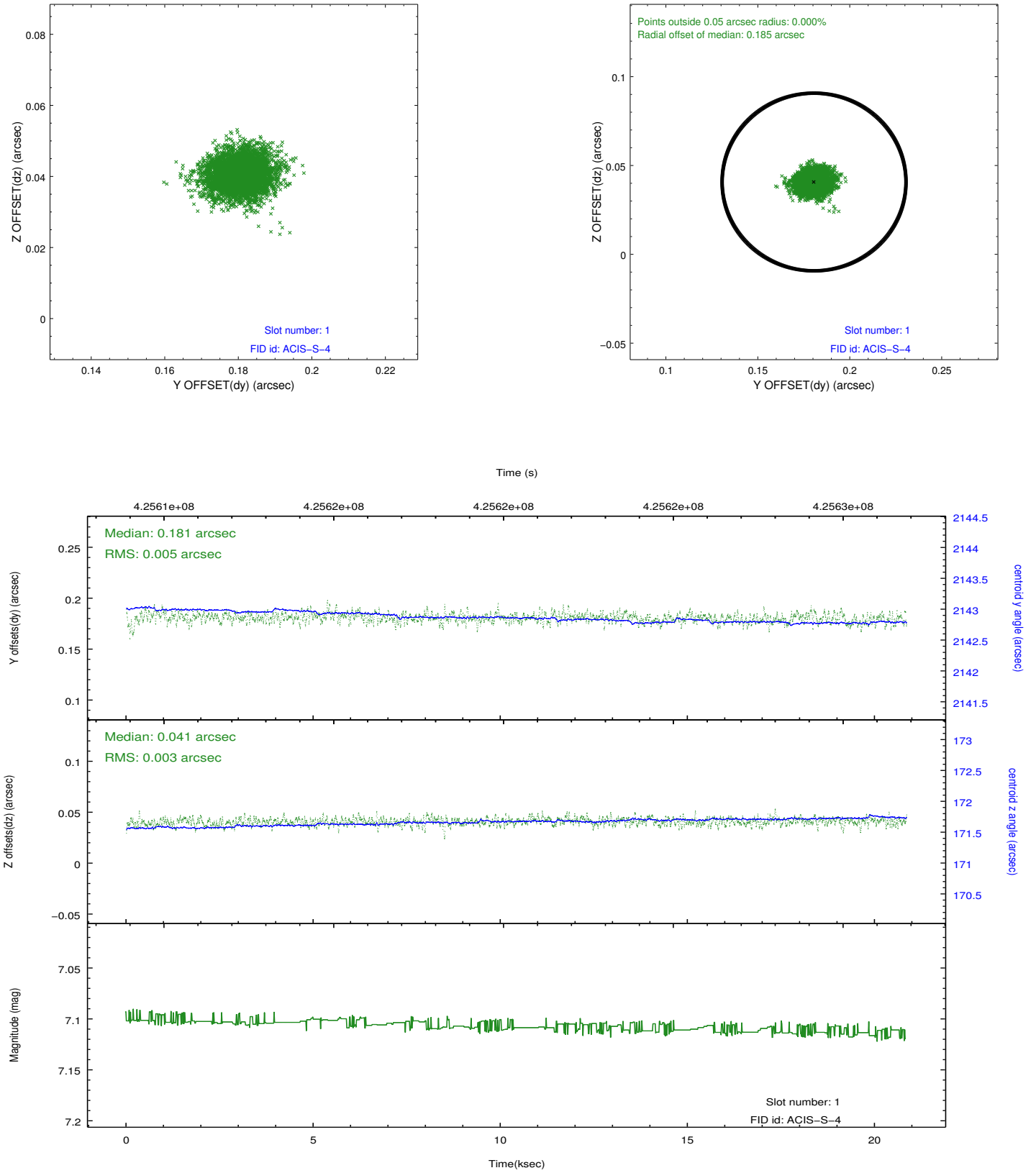


2.5 FID Slots

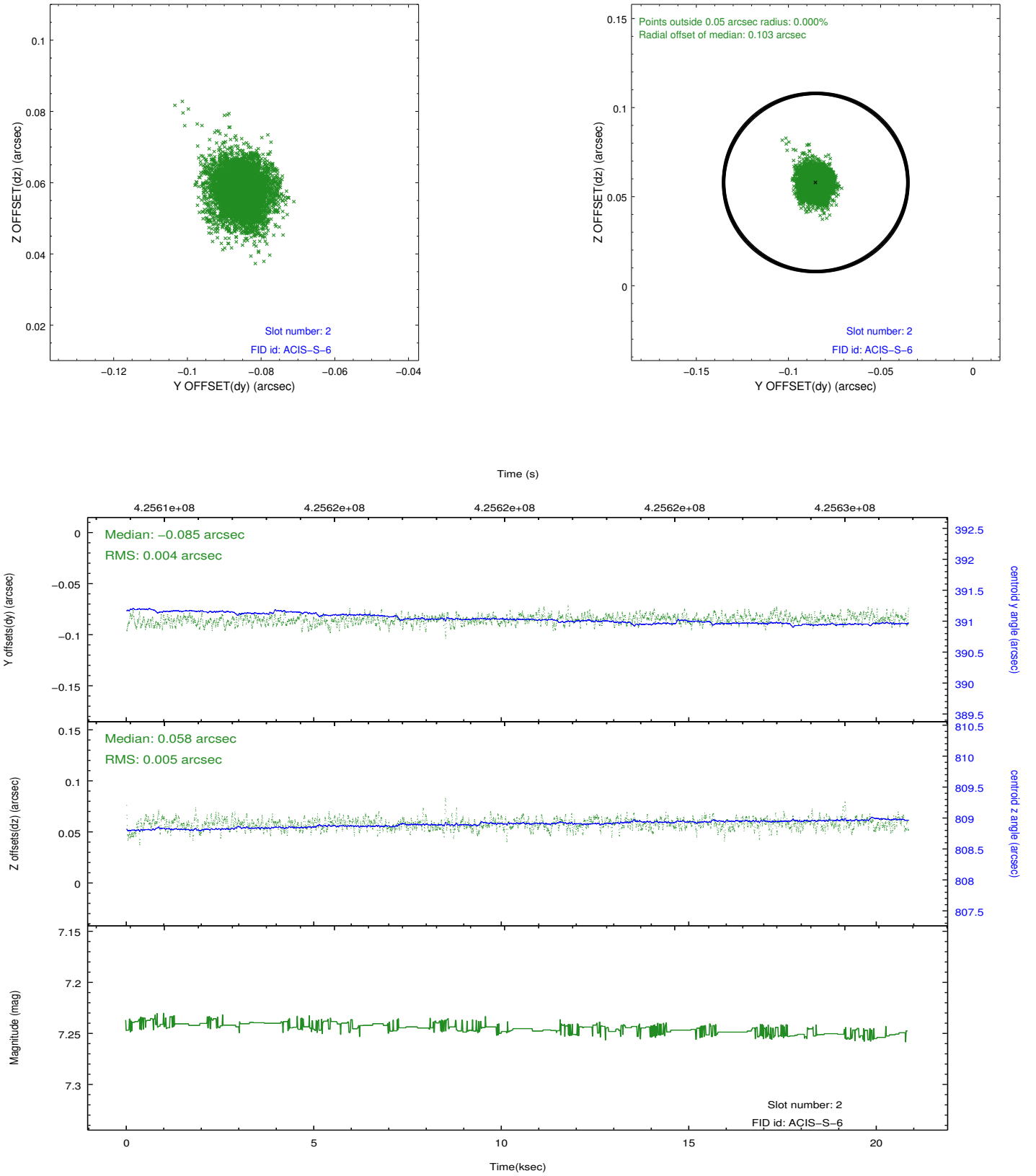
2.5.1 Slot 0



2.5.2 Slot 1



2.5.3 Slot 2



A Summary

A.1 Status

V&V Scientist	Jen Lauer
V&V Date (YYYY-MM-DD)	2012.02.14
V&V Edition	1
V&V Disposition and Status	OK
V&V Charge Time	20.713599922895

A.2 Comments