

# V&V Reference Report

## L2 ASCDS Version : 8.4.3

Observation 12395 - L2 Version 2  
Chandra X-Ray Center

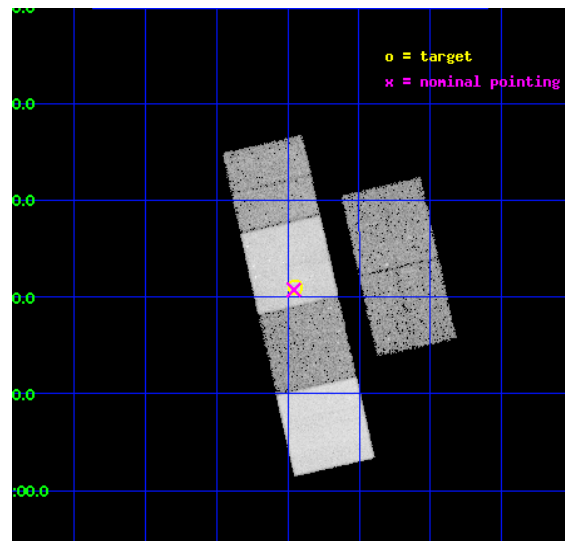
L2 Processing Date : Feb 19 2012

## Contents

<b>1</b>	<b>Front</b>	<b>2</b>
<b>2</b>	<b>OBI</b>	<b>3</b>
2.1	OBI . . . . .	3
2.1.1	Images . . . . .	3
2.1.2	Bias . . . . .	3
2.1.3	Parameters . . . . .	4
2.1.4	Events . . . . .	4
2.2	Compared Parameters . . . . .	5
2.3	Aspect . . . . .	6
2.4	Star Slots . . . . .	9
2.4.1	Slot 3 . . . . .	9
2.4.2	Slot 4 . . . . .	10
2.4.3	Slot 5 . . . . .	11
2.4.4	Slot 6 . . . . .	12
2.4.5	Slot 7 . . . . .	13
2.5	FID Slots . . . . .	14
2.5.1	Slot 0 . . . . .	14
2.5.2	Slot 1 . . . . .	15
2.5.3	Slot 2 . . . . .	16
<b>A</b>	<b>Summary</b>	<b>17</b>
A.1	Status . . . . .	17
A.2	Comments . . . . .	17

# 1 Front

seq_num	200729	Sequence number
obs_id	12395	Observation id
title	Magnetically Sleepy Stars: An X-ray Survey of Candidate Stars in Extended Magnetic Minima	Proposal title
observer	Dr. Steven Saar	Principal investigator
object	HD 120066	Source name
dtcycle	0	&#160
cycle	P	events from which exps? Prim/Second/Both
ra_targ	206.737917	Observer's specified target RA [deg]
dec_targ	6.350361	Observer's specified target Dec [deg]
ra_nom	206.73948868982	Nominal RA [deg]
dec_nom	6.3457746209189	Nominal Dec [deg]
roll_nom	257.21865758326	Nominal Roll [deg]
revision	2	Processing version of data
ontime	23295.999913275	Sum of GTIs [s]
livetime	23001.011935206	Livetime [s]
ontime2	23292.758942902	Sum of GTIs [s]
ontime3	23295.997673929	Sum of GTIs [s]
ontime5	23295.999913275	Sum of GTIs [s]
ontime6	23295.999913275	Sum of GTIs [s]
ontime7	23295.999913275	Sum of GTIs [s]
ontime8	23295.956633925	Sum of GTIs [s]
l2events	245735	Number of level 2 events

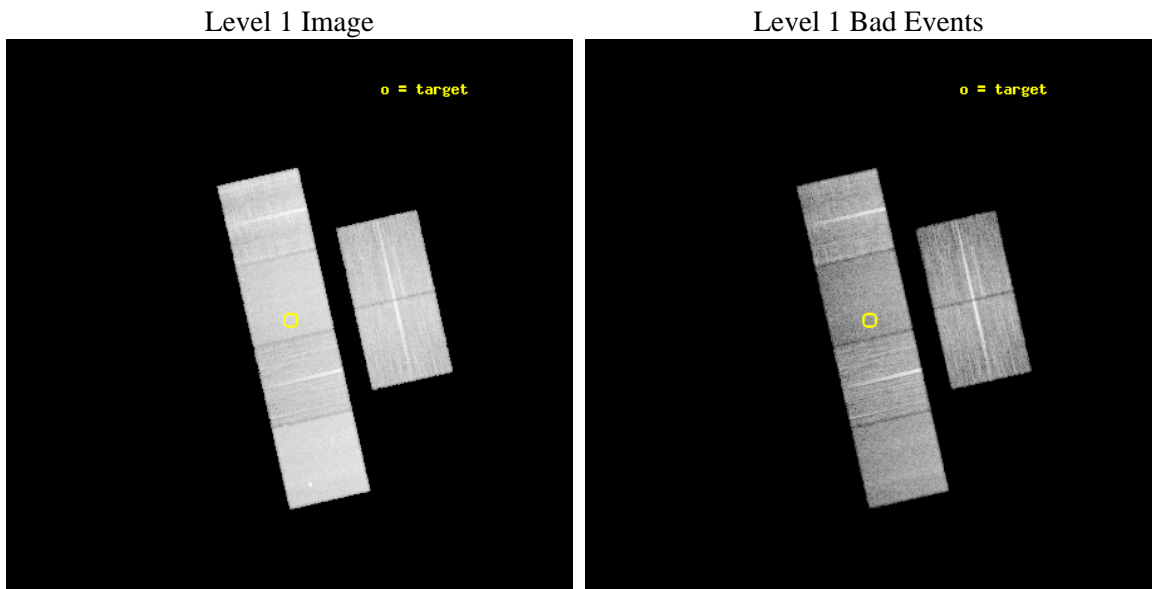




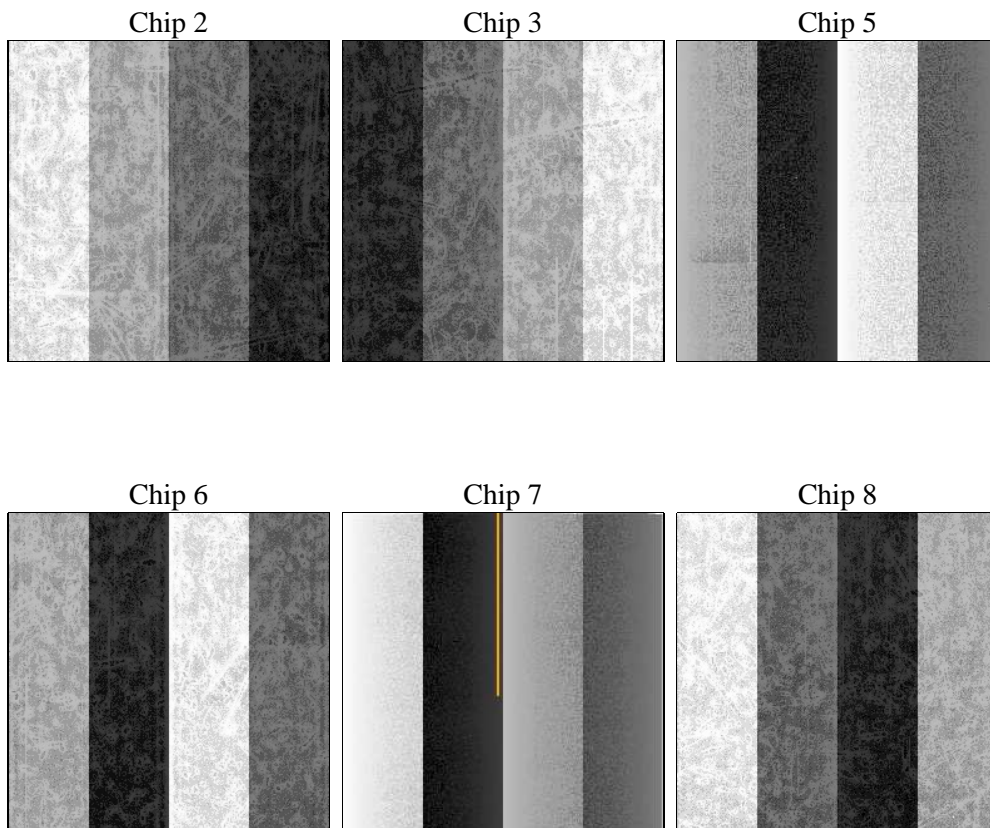
## 2 OBI

### 2.1 OBI

#### 2.1.1 Images



#### 2.1.2 Bias



### 2.1.3 Parameters

obi_num	0	Obi number	sched_exp_time	23241.000000	[s] Scheduled observation exposure time
ascdsver	8.4.3	Processing system revision	ontime	23295.999913275	Sum of GTIs [s]
caldsver	4.4.8	&#160	ontime2	23292.758942902	Sum of GTIs [s]
date	2012-02-20T00:01:49	Date and time of file creation	ontime3	23295.997673929	Sum of GTIs [s]
revision	2	Processing version of data	ontime5	23295.999913275	Sum of GTIs [s]
			ontime6	23295.999913275	Sum of GTIs [s]
			ontime7	23295.999913275	Sum of GTIs [s]
			ontime8	23295.956633925	Sum of GTIs [s]
			l1events	1027378	Number of level 1 events

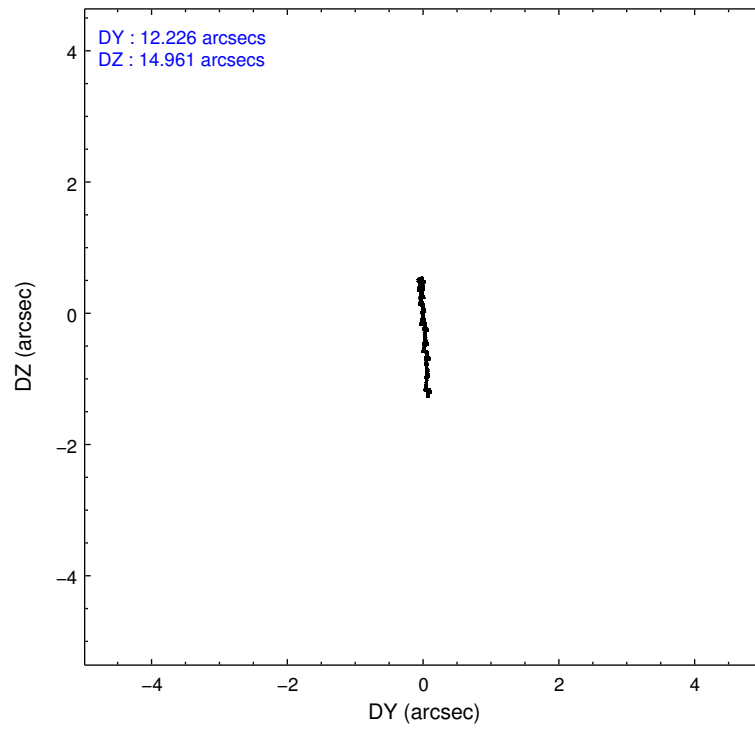
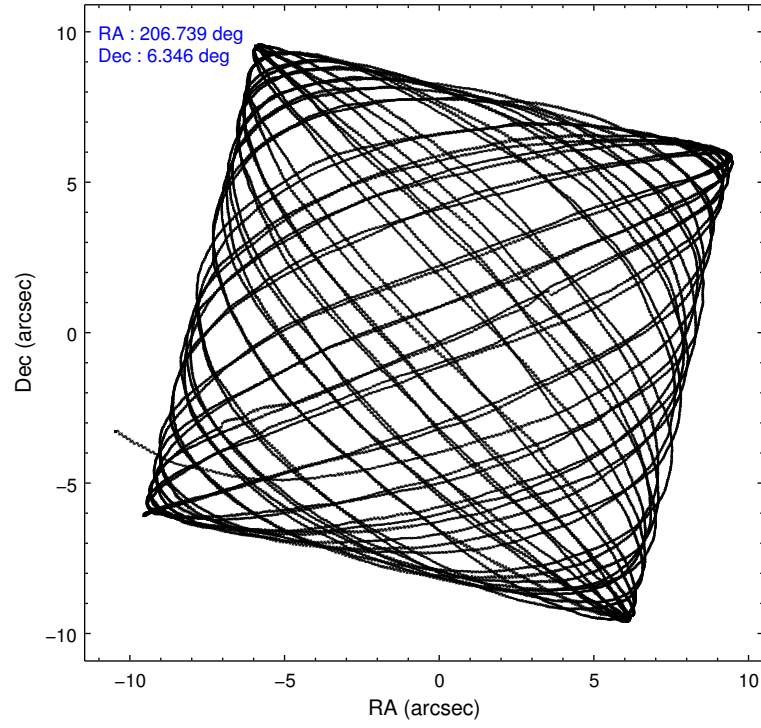
### 2.1.4 Events

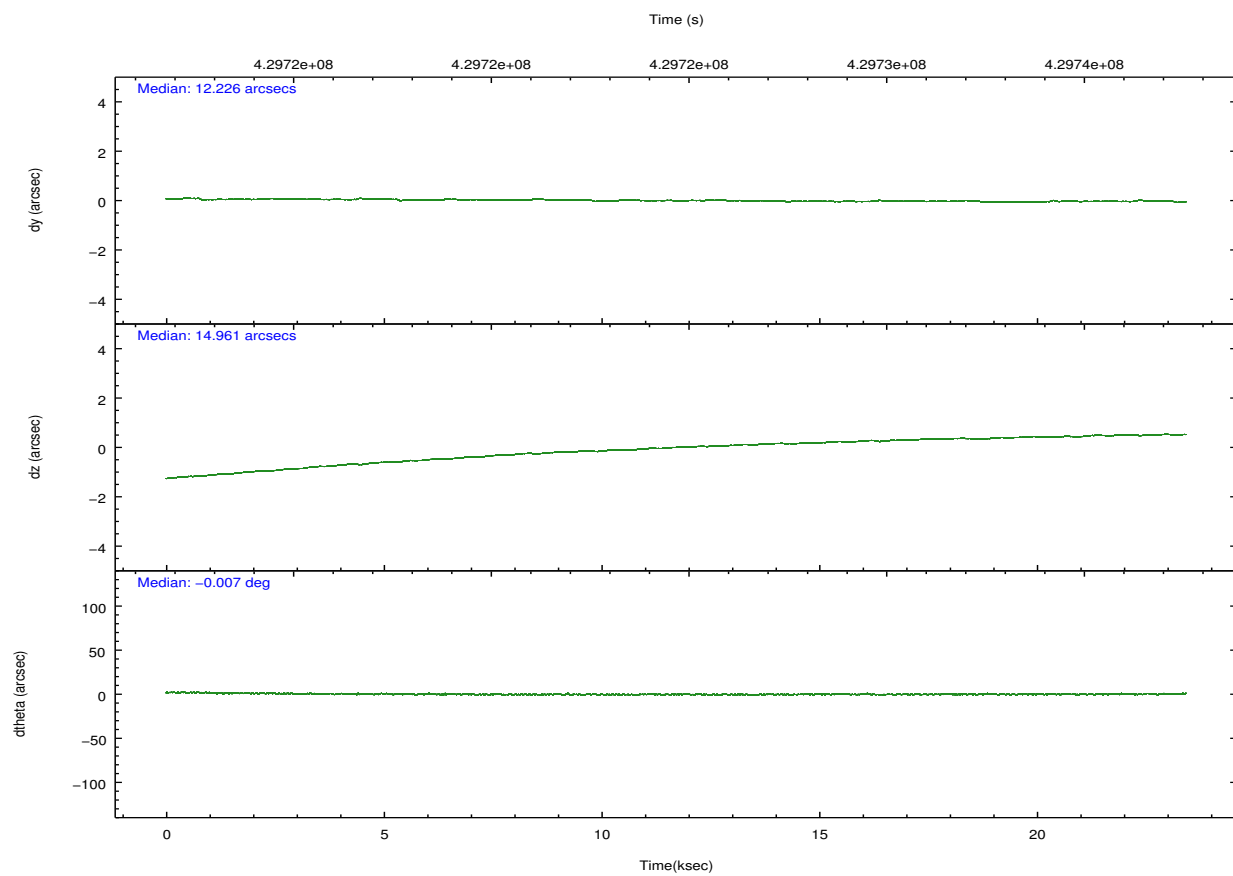
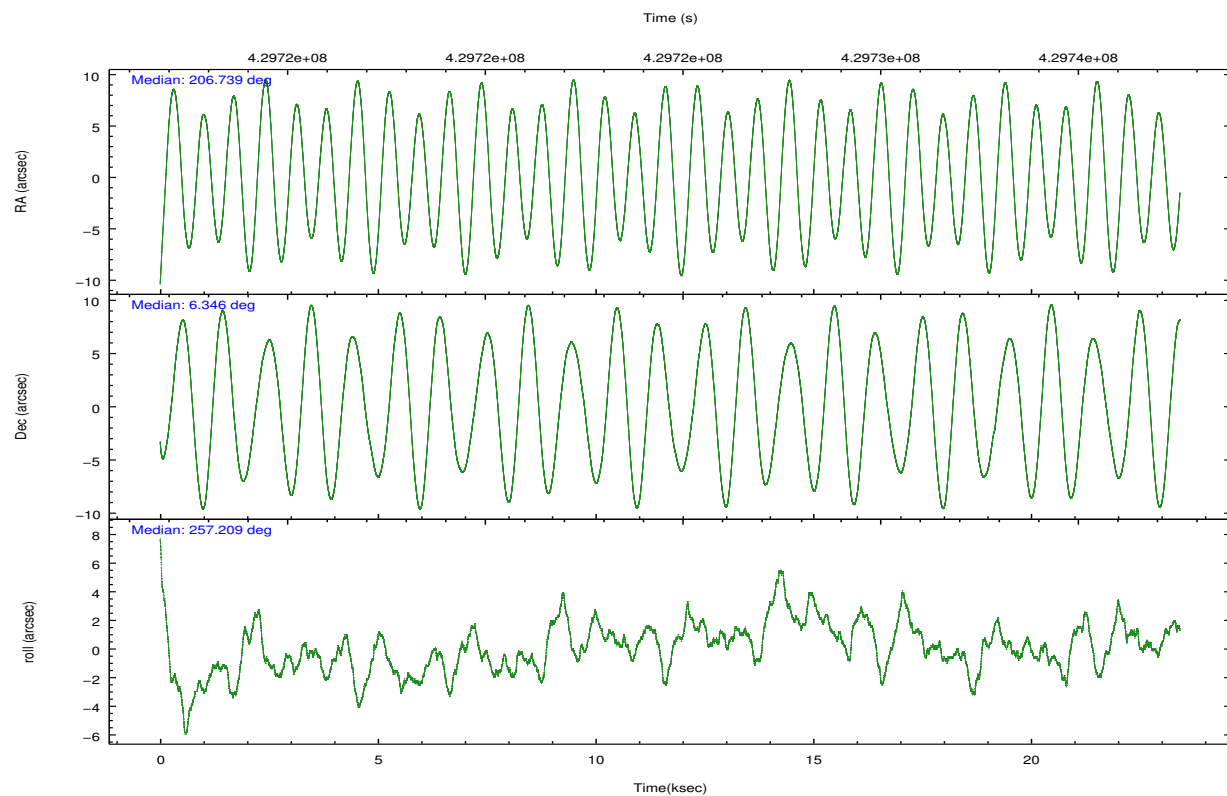
	ccd 2	ccd 3	ccd 5	ccd 6	ccd 7	ccd 8		ccd 2	ccd 3	ccd 5	ccd 6	ccd 7	ccd 8
level 1 events	149227	133442	221561	146941	185516	190691	grade 0 events	5753	5399	7849	5872	7745	15102
rejected events	133112	118216	113307	130224	102501	139686		3%	4%	3%	3%	4%	7%
rejected %	89%	88%	51%	88%	55%	73%	grade 1 events	89	67	348	73	225	146
								0%	0%	0%	0%	0%	0%
							grade 2 events	4020	3412	33074	3858	16964	12030
								2%	2%	14%	2%	9%	6%
							grade 3 events	1589	1663	4261	1701	7243	5301
								1%	1%	1%	1%	3%	2%
							grade 4 events	1607	1663	4025	1567	7318	5070
								1%	1%	1%	1%	3%	2%
							grade 5 events	6039	6890	17198	6878	19427	9832
								4%	5%	7%	4%	10%	5%
							grade 6 events	3149	3093	59055	3722	43751	13531
								2%	2%	26%	2%	23%	7%
							grade 7 events	126981	111255	95751	123270	82843	129679
								85%	83%	43%	83%	44%	68%

## 2.2 Compared Parameters

Parameter	Planned	Actual	Parameter	Planned	Actual
Instrument	ACIS	ACIS	Obspar format version number	7	7
Detector	ACIS-235678	ACIS-235678	Obspar file type	PREDICTED	ACTUAL
Grating	NONE	NONE	Obspar update status	NONE	UPDATED
Data mode	VFAINT	VFAINT	CCD I0 on	N	N
Observation mode	POINTING	POINTING	CCD I1 on	N	N
[deg] Pointing RA	206.730995	206.7394886898225	CCD I2 on	O2	Y
[deg] Pointing Dec	6.371781	6.345774620918897	CCD I3 on	O3	Y
[deg] Pointing Roll	257.062971	257.2186575832604	CCD S0 on	N	N
[mm] SIM focus pos	-0.684267	-0.6828225247311905	CCD S1 on	O5	Y
[mm] SIM defocus	0	0.001444936568705701	CCD S2 on	O1	Y
[mm] SIM translation stage pos	-190.132523	-190.1425803651734	CCD S3 on	Y	Y
[mm] SIM translation stage offset	0	0.01005778216563158	CCD S4 on	O4	Y
[s] Observation start time (MET)	429713128.184000	429711654.23731	CCD S5 on	N	N
Observation start date	2011-08-14T12:44:22	2011-08-14T12:20:54	Number of optional ACIS chips dropped	0	0
[s] Observation end time (MET)	429736369.184000	429737155.72615	On-chip summing requested	N	N
Observation end date	2011-08-14T19:11:43	2011-08-14T19:25:55	Subarray requested	NONE	NONE
Read mode	TIMED	TIMED	Alternating exposures requested	N	N
			[s] Primary exposure time	0.000000	3.2

## 2.3 Aspect



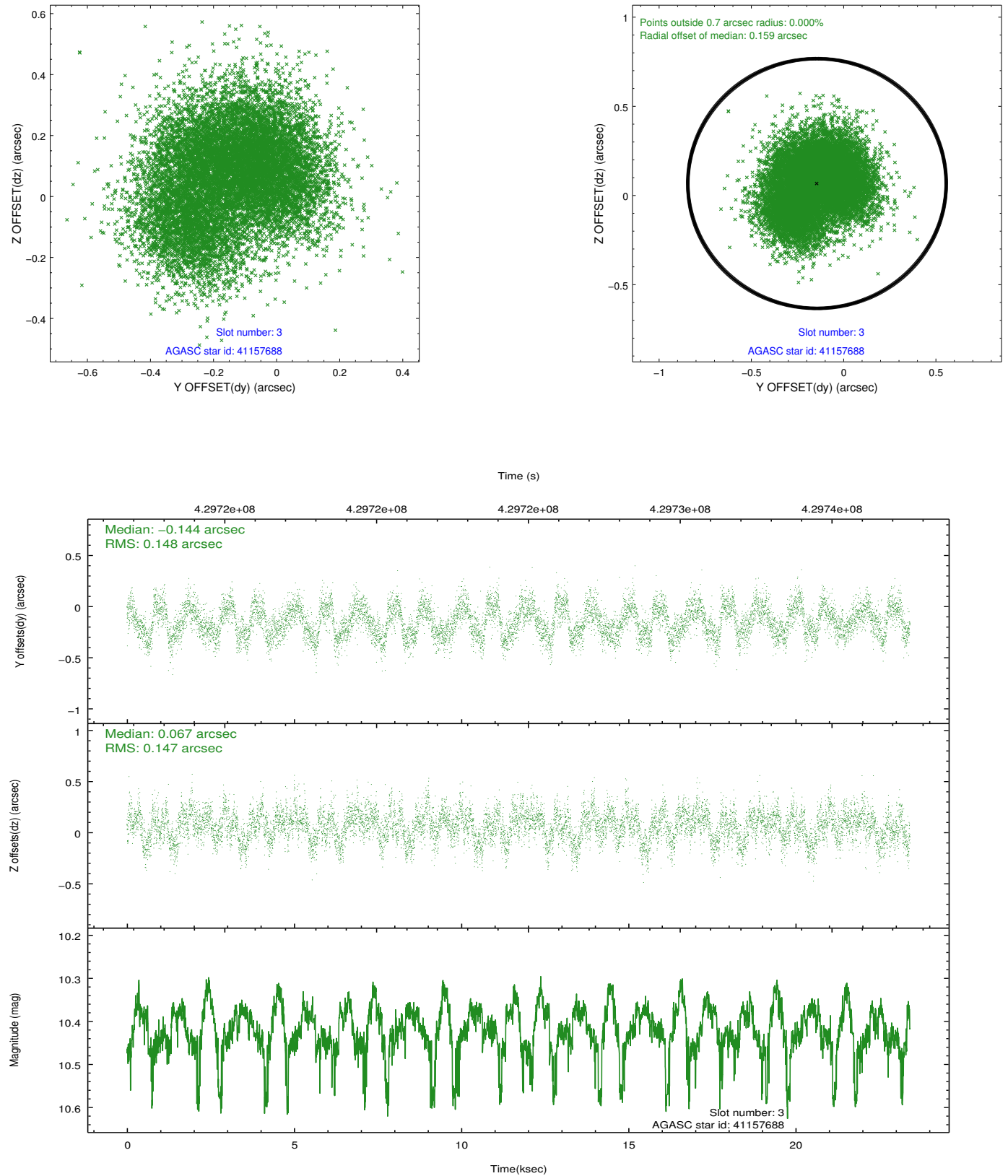


### Slot Statistics

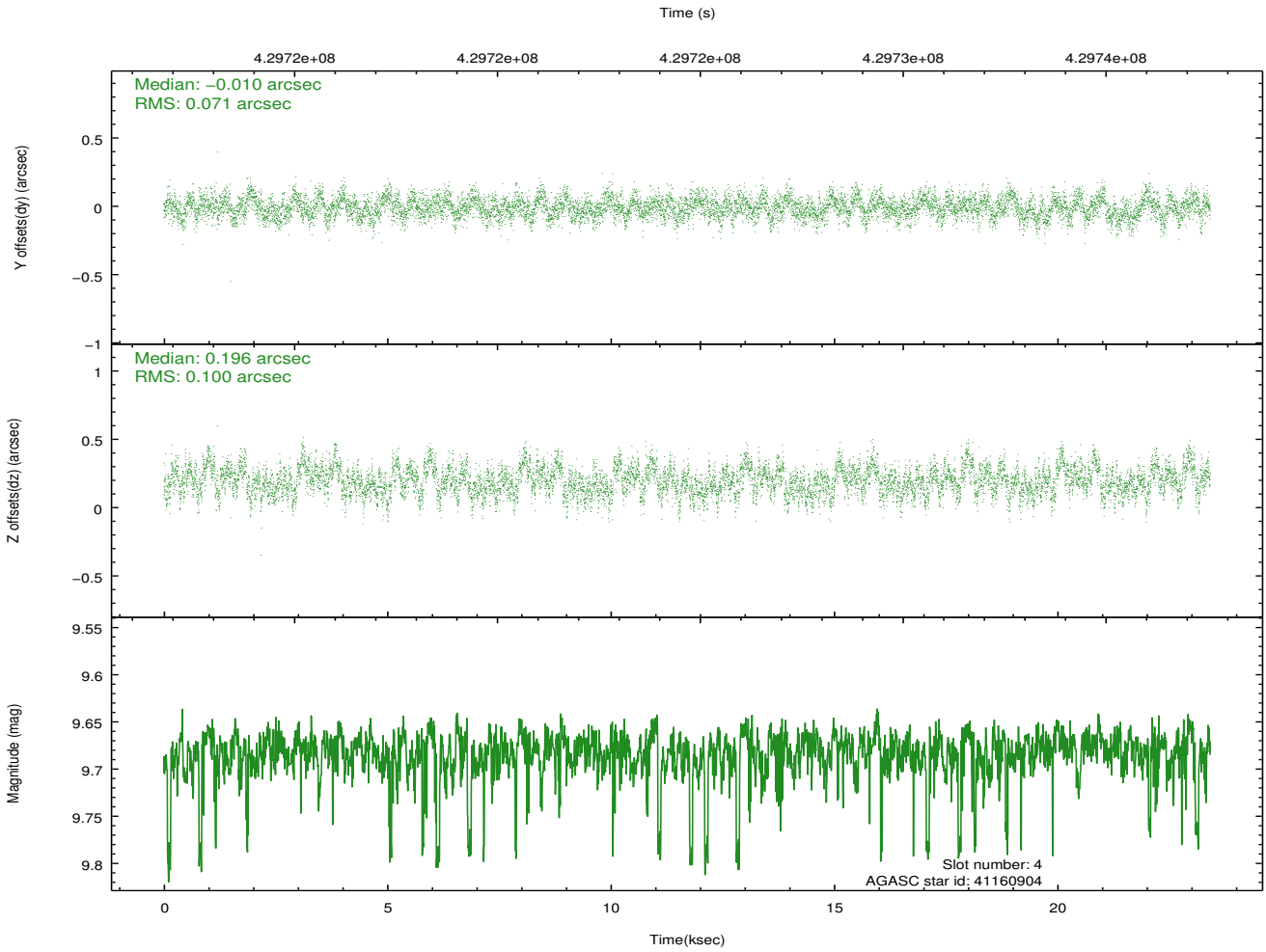
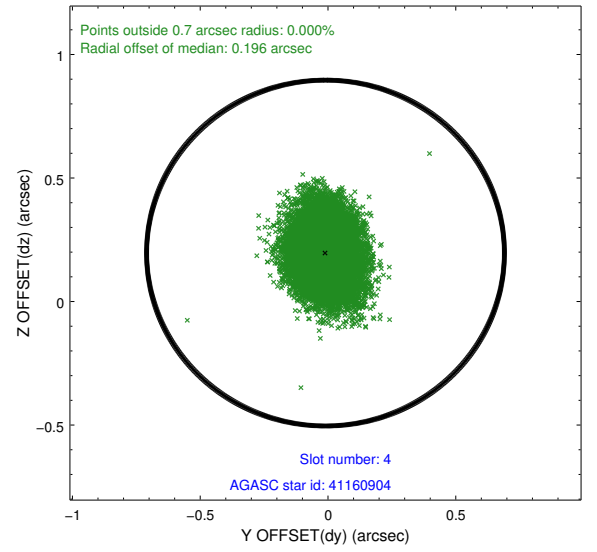
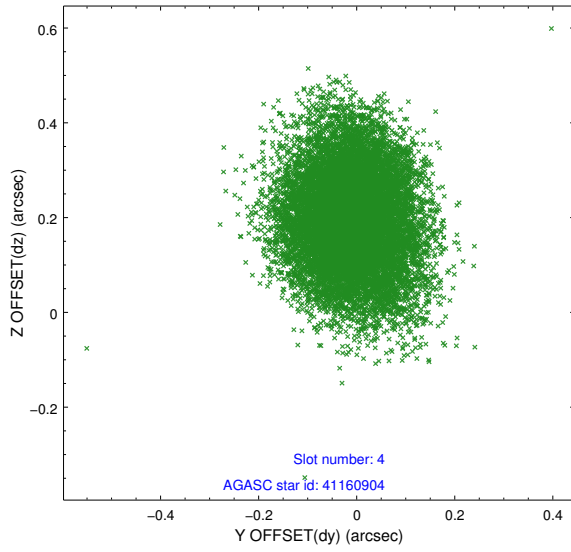
slot	status	id	mag	n_pts	med_dy	med_dz	dr1	dr2	ra	dec	mean_y	mean_z
0	FID	ACIS-S-1	7.03	5713	0.095	-0.080	0.023	0.031	0.000000	0.000000	931.04	-1731.85
1	FID	ACIS-S-5	7.07	5713	-0.144	0.060	0.010	0.021	0.000000	0.000000	-1818.15	165.65
2	FID	ACIS-S-6	7.16	5713	0.027	0.034	0.029	0.048	0.000000	0.000000	396.33	809.78
3	GUIDE	41157688	10.42	11396	-0.144	0.067	0.226	0.347	206.537845	6.318443	341.98	-630.26
4	GUIDE	41160904	9.68	11383	-0.010	0.196	0.130	0.210	207.188656	6.379674	-394.94	1589.60
5	GUIDE	41162896	9.82	11403	0.082	-0.117	0.172	0.271	206.074691	6.059933	1620.69	-2038.88
6	GUIDE	41163040	9.37	11408	0.135	-0.125	0.168	0.259	206.018774	5.906111	2204.16	-2110.52
7	GUIDE	41167568	7.21	11425	-0.054	-0.033	0.097	0.151	207.372133	6.343832	-416.44	2257.58

## 2.4 Star Slots

### 2.4.1 Slot 3

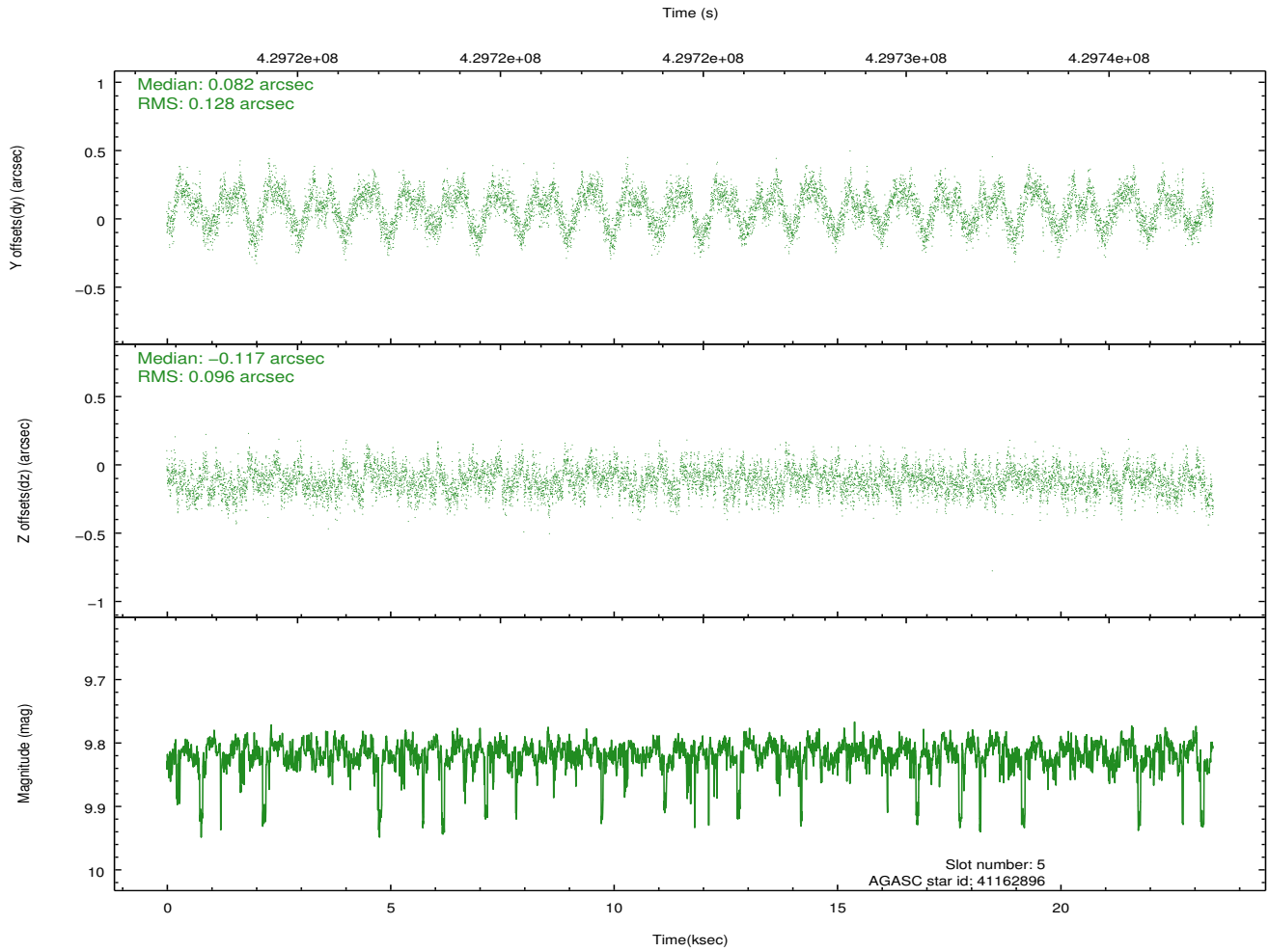
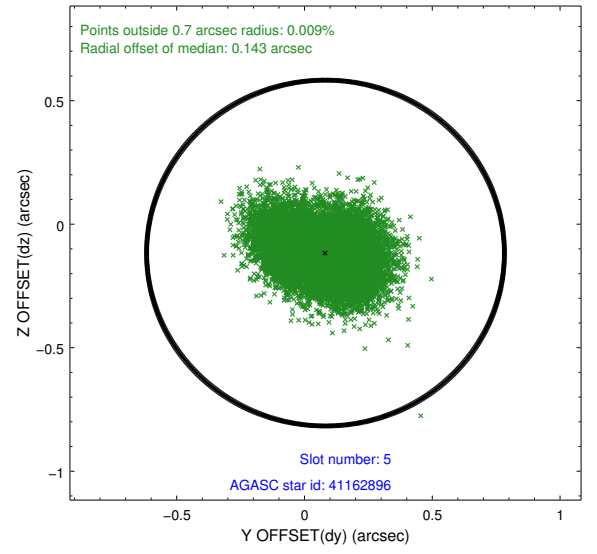
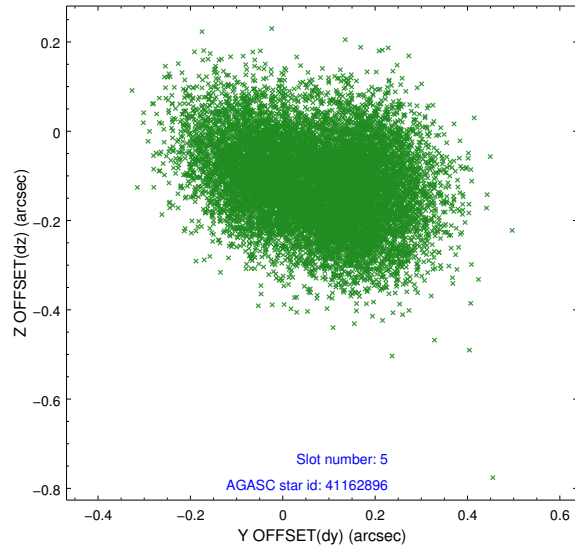


## 2.4.2 Slot 4

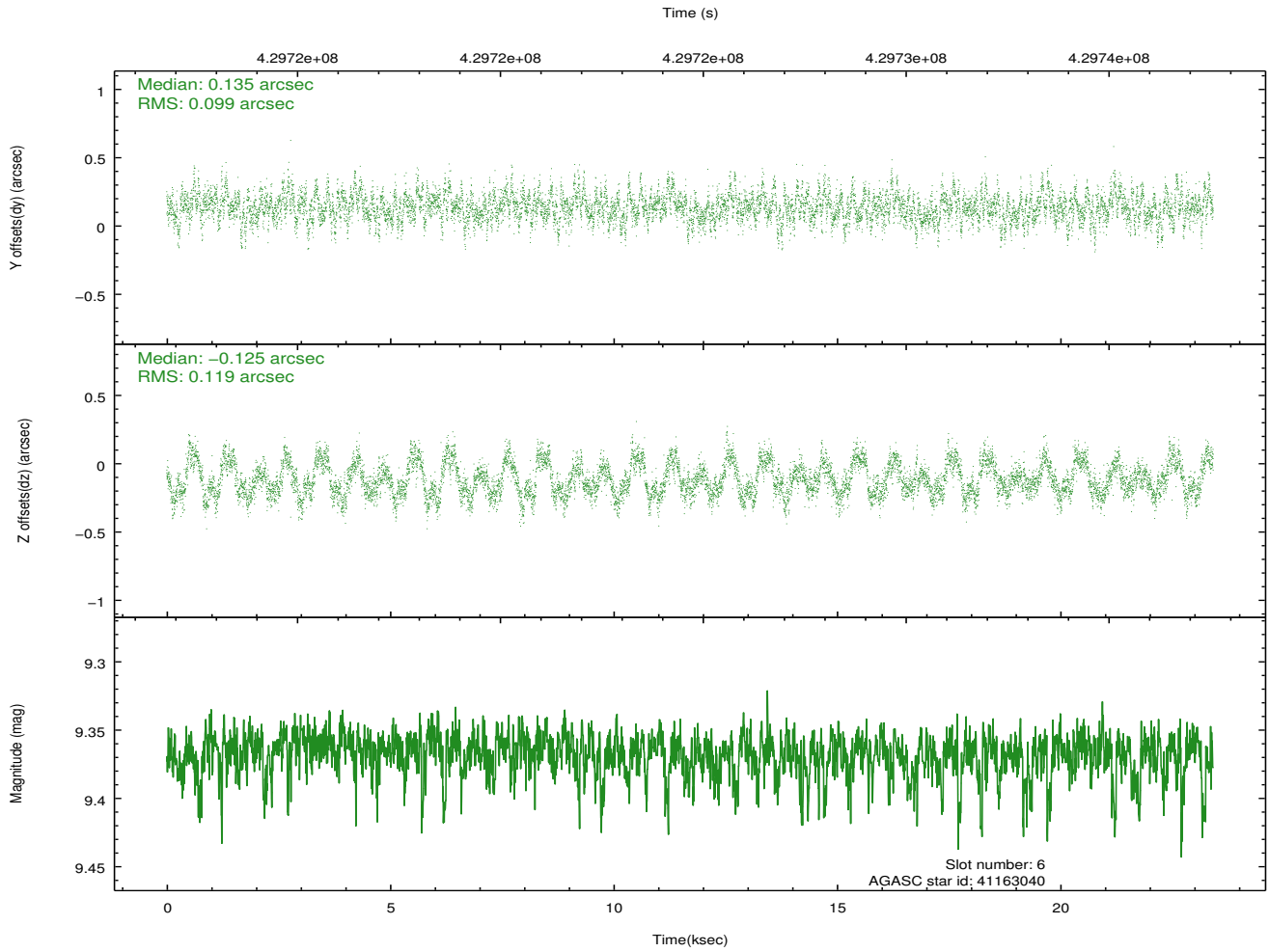
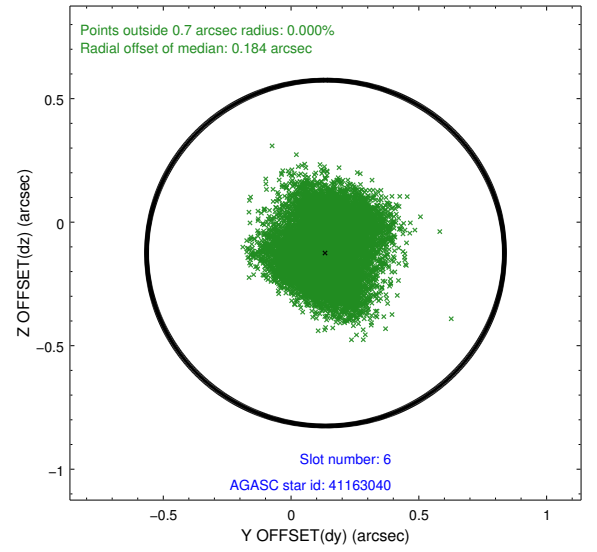
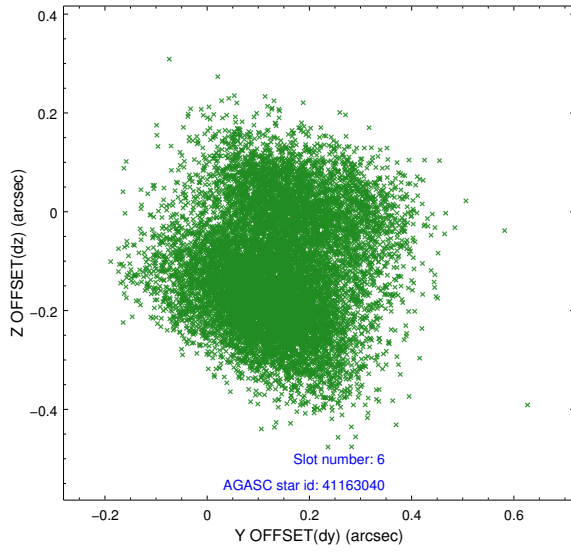




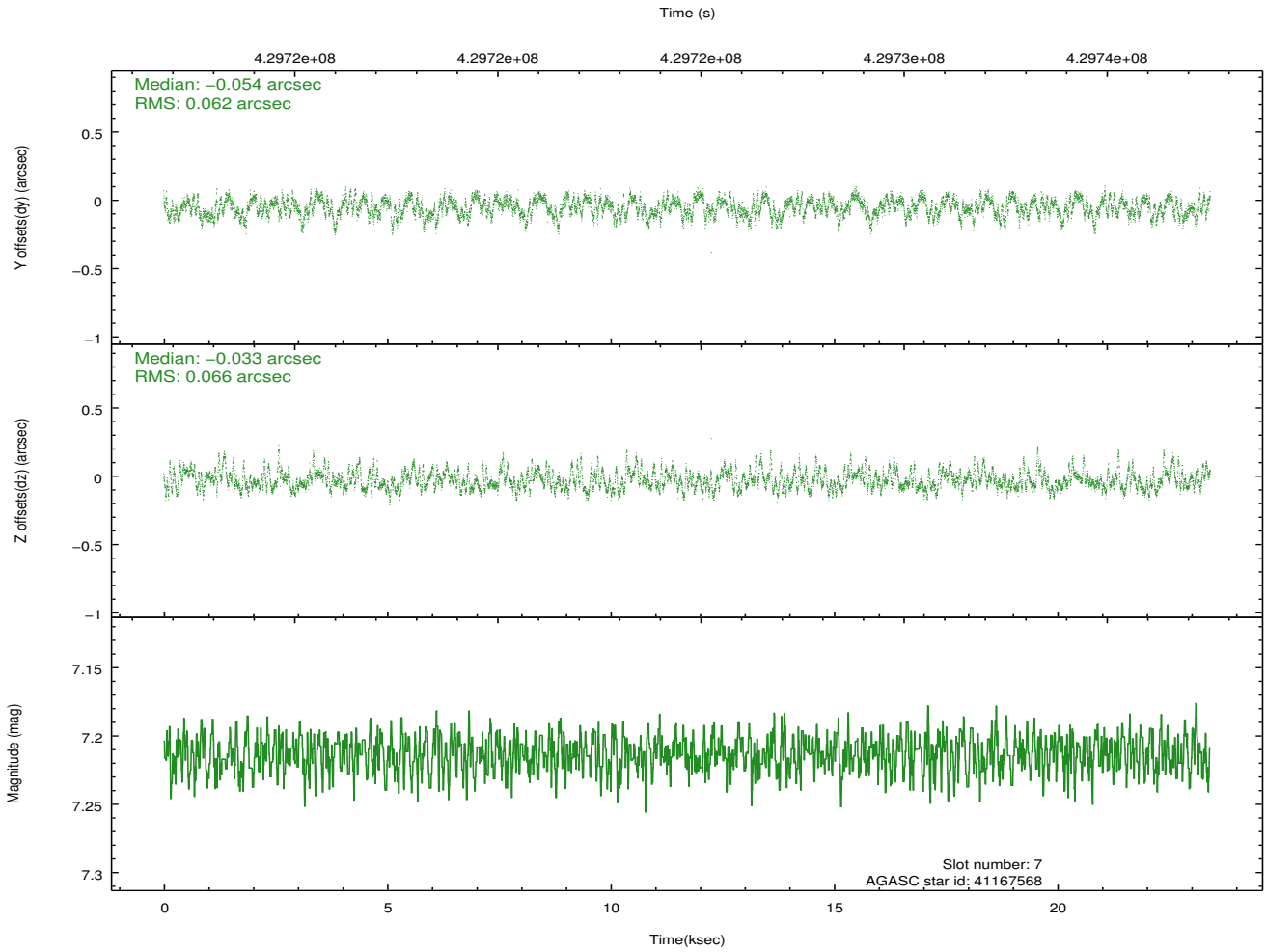
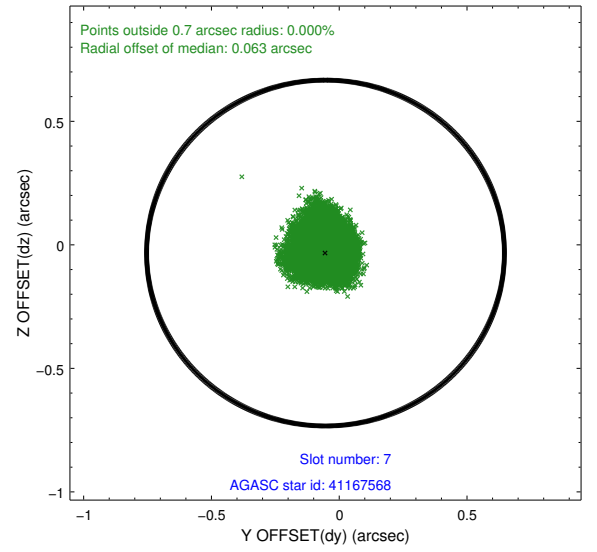
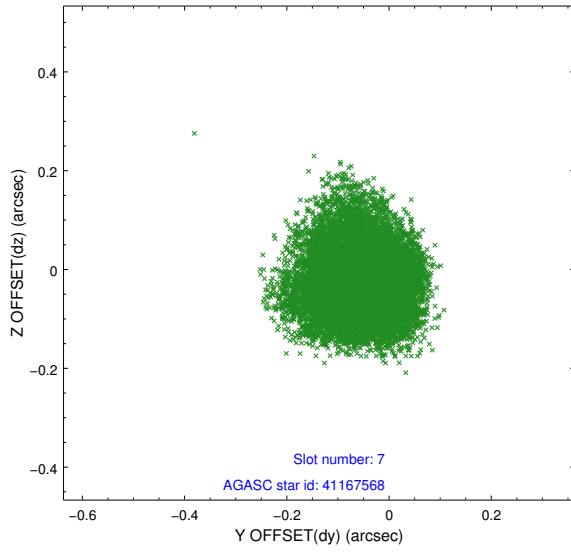
### 2.4.3 Slot 5



## 2.4.4 Slot 6

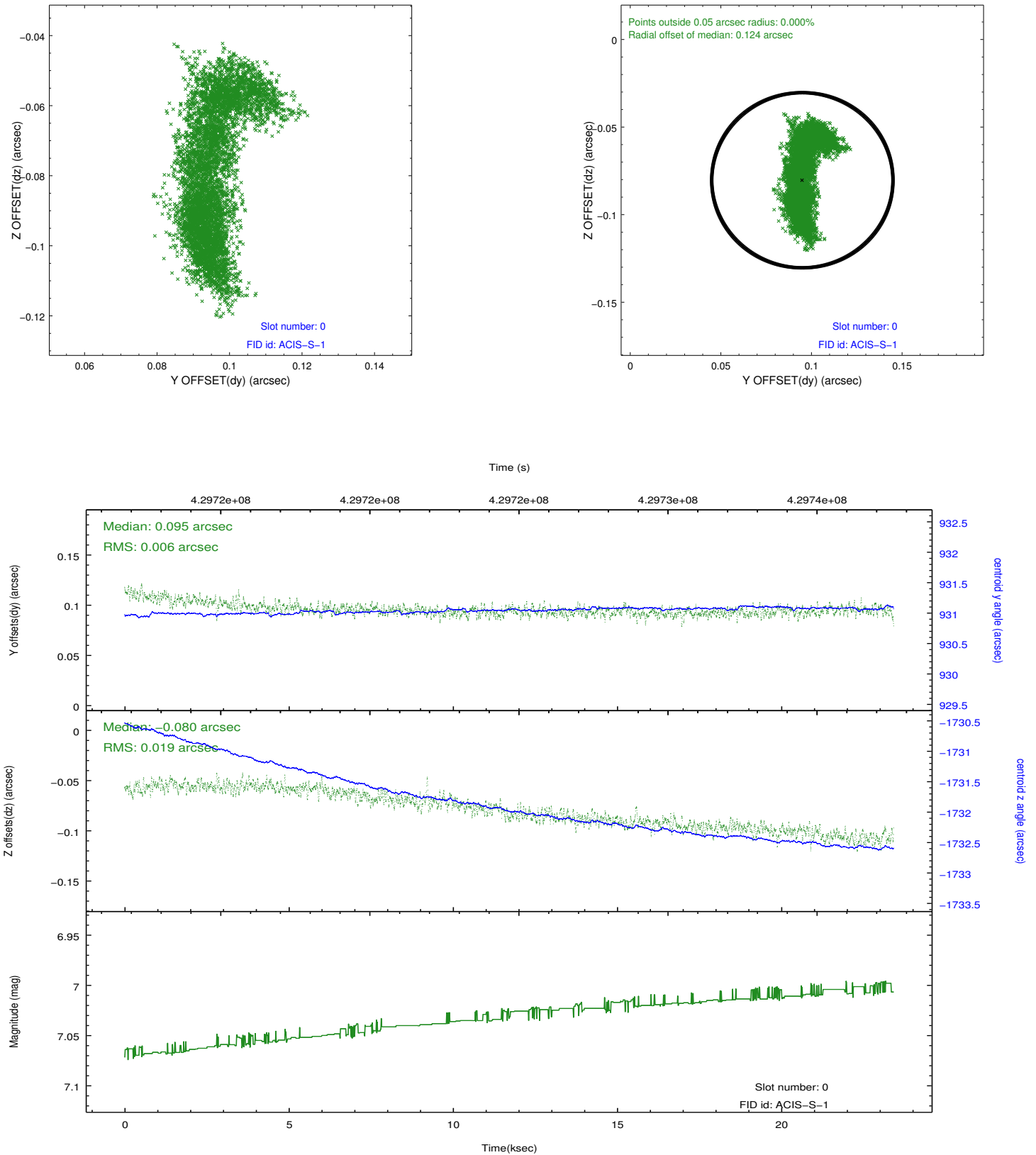


## 2.4.5 Slot 7

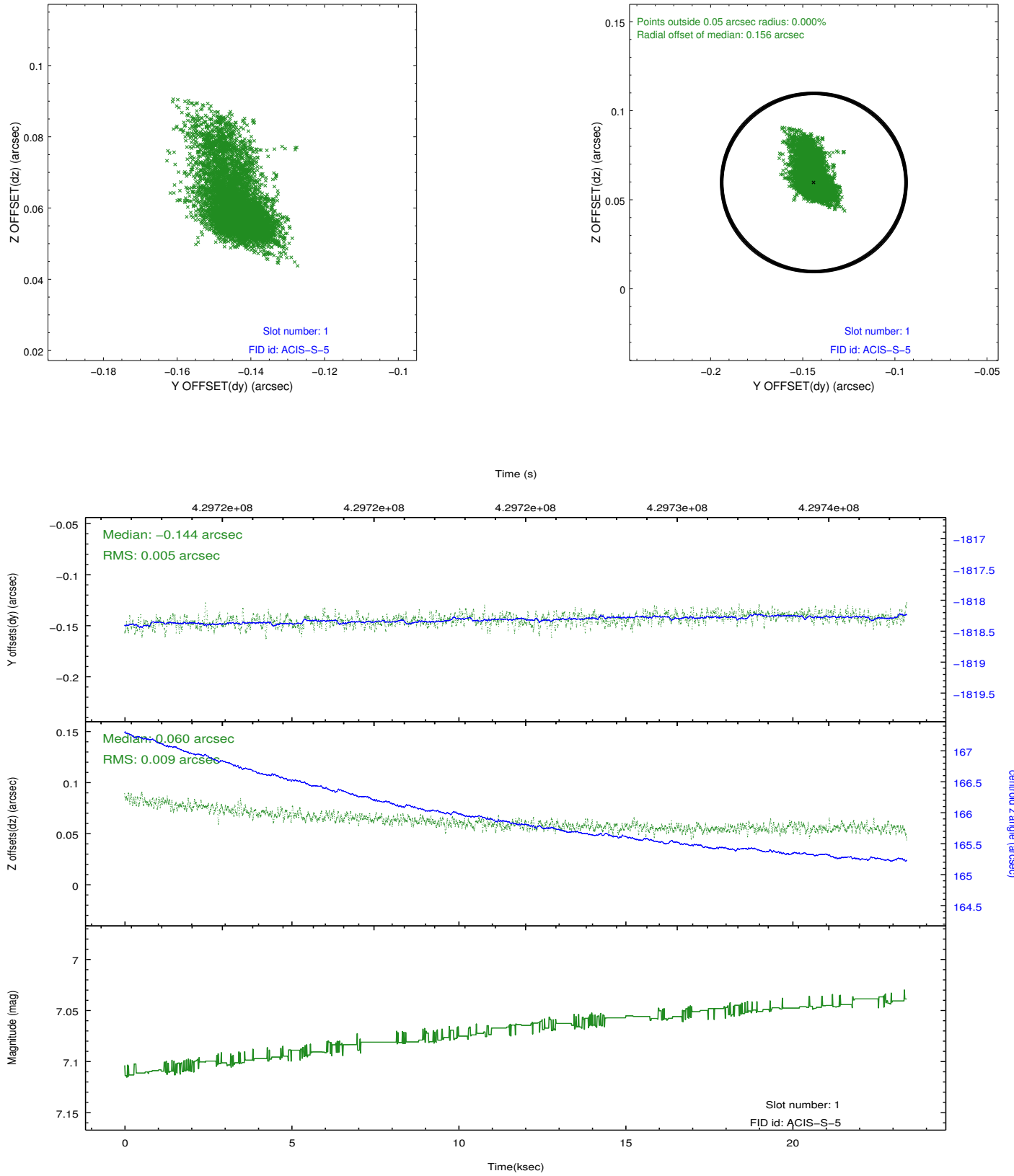


## 2.5 FID Slots

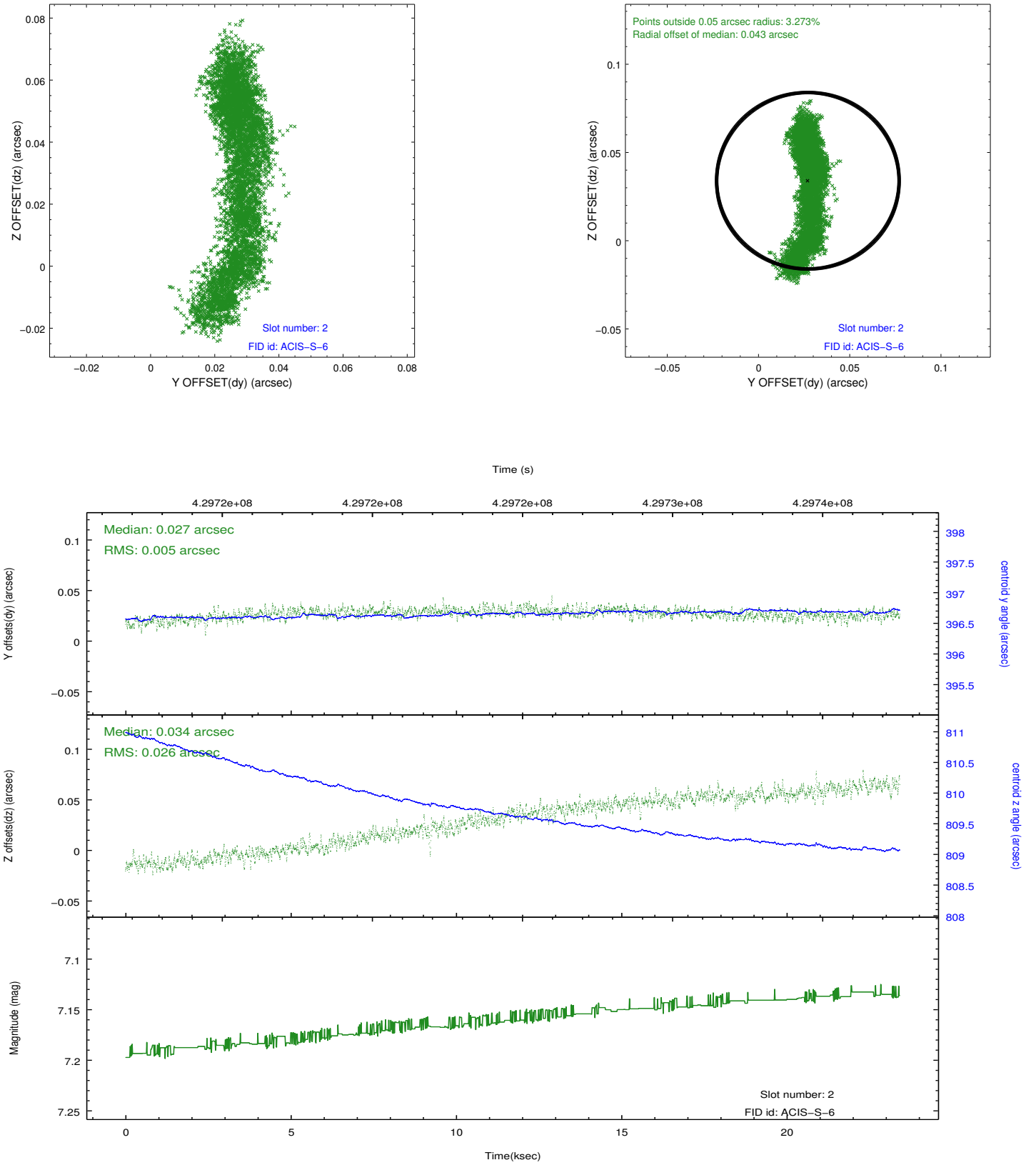
### 2.5.1 Slot 0



## 2.5.2 Slot 1



### 2.5.3 Slot 2



## **A Summary**

### **A.1 Status**

V&V Scientist	Jen Lauer
V&V Date (YYYY-MM-DD)	2012.02.22
V&V Edition	1
V&V Disposition and Status	OK
V&V Charge Time	23.295999913275

### **A.2 Comments**