

V&V Reference Report

L2 ASCDS Version : 8.4.5

Observation 11825 - L2 Version 2
Chandra X-Ray Center

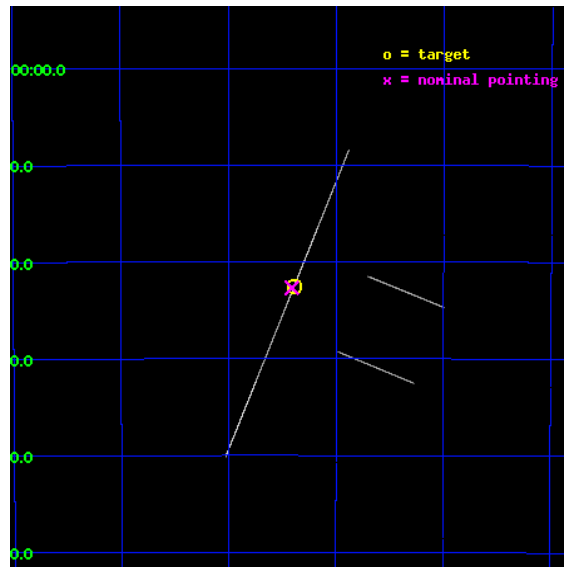
L2 Processing Date : Jun 23 2012

Contents

1	Front	2
2	OBI	3
2.1	OBI	3
2.1.1	Images	3
2.1.2	Bias	3
2.1.3	Parameters	4
2.1.4	Events	4
2.2	Compared Parameters	5
2.3	Aspect	6
2.4	Star Slots	9
2.4.1	Slot 3	9
2.4.2	Slot 4	10
2.4.3	Slot 5	11
2.4.4	Slot 6	12
2.4.5	Slot 7	13
2.5	FID Slots	14
2.5.1	Slot 0	14
2.5.2	Slot 1	15
2.5.3	Slot 2	16
A	Summary	17
A.1	Status	17
A.2	Comments	17

1 Front

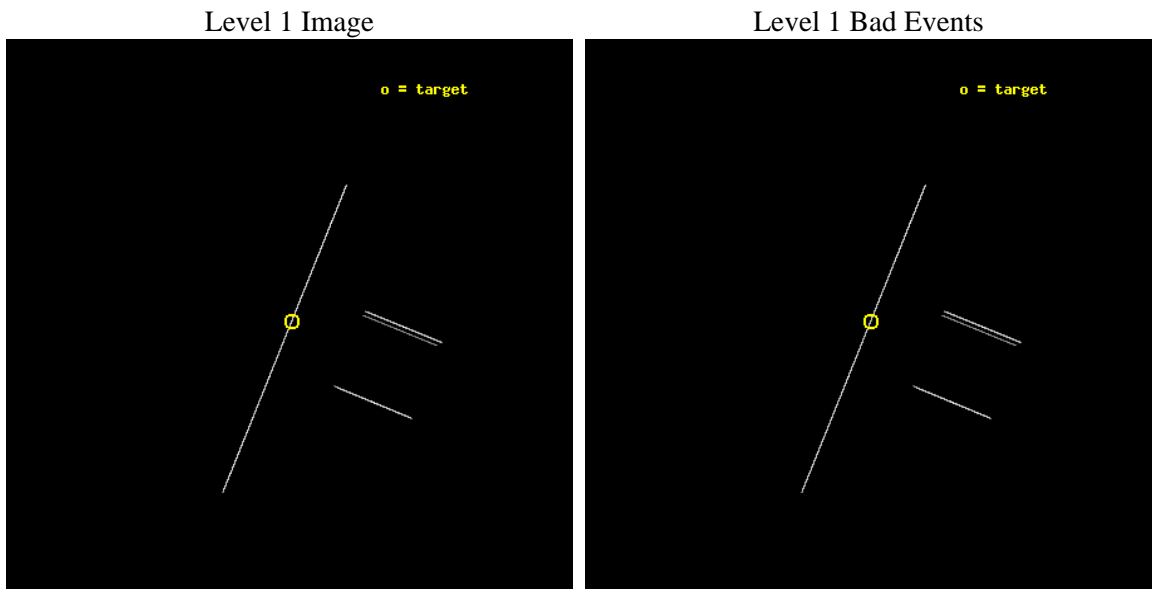
seq_num	501342	Sequence number
obs_id	11825	Observation id
title	Completing the Timing of Two Isolated Neutron Stars	Proposal title
observer	Dr. Stephen Murray	Principal investigator
object	RX J0806.4-4123	Source name
ra_targ	121.5975	Observer's specified target RA [deg]
dec_targ	-41.37525	Observer's specified target Dec [deg]
ra_nom	121.60269984414	Nominal RA [deg]
dec_nom	-41.378129205677	Nominal Dec [deg]
roll_nom	292.11255206002	Nominal Roll [deg]
revision	2	Processing version of data
ontime	18179.25	Sum of GTIs [s]
livetime	18108.237304688	Livetime [s]
ontime2	18179.25	Sum of GTIs [s]
ontime3	18179.25	Sum of GTIs [s]
ontime5	18179.25	Sum of GTIs [s]
ontime6	18179.25	Sum of GTIs [s]
ontime7	18179.25	Sum of GTIs [s]
ontime8	18179.25	Sum of GTIs [s]
l2events	273605	Number of level 2 events



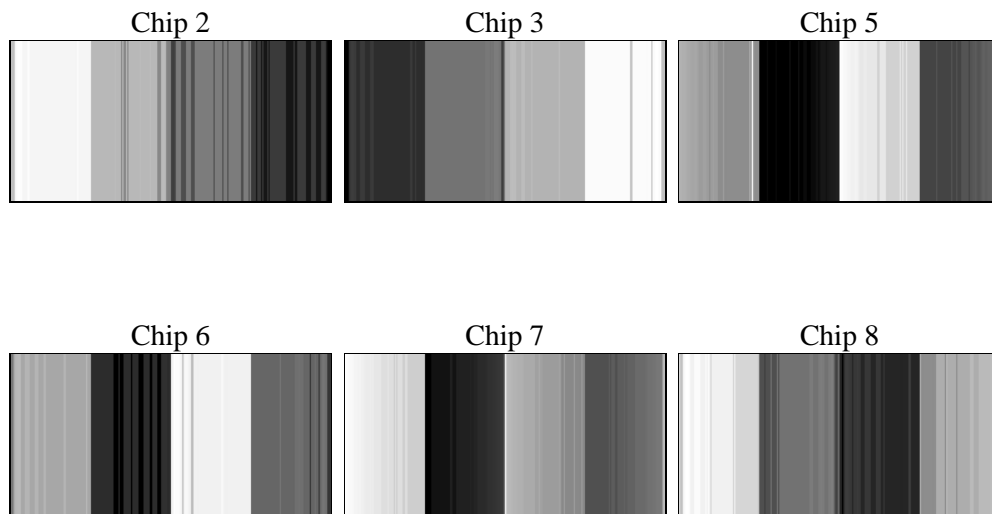
2 OBI

2.1 OBI

2.1.1 Images



2.1.2 Bias



2.1.3 Parameters

obi_num	0	Obi number	sched_exp_time	18000.000000	[s] Scheduled observation exposure time
ascdsver	8.4.5	Processing system revision	ontime	18179.25	Sum of GTIs [s]
caldsver	4.4.10	 	ontime2	18179.25	Sum of GTIs [s]
date	2012-06-23T05:12:25	Date and time of file creation	ontime3	18179.25	Sum of GTIs [s]
revision	2	Processing version of data	ontime5	18179.25	Sum of GTIs [s]
			ontime6	18179.25	Sum of GTIs [s]
			ontime7	18179.25	Sum of GTIs [s]
			ontime8	18179.25	Sum of GTIs [s]
			l1events	1870351	Number of level 1 events

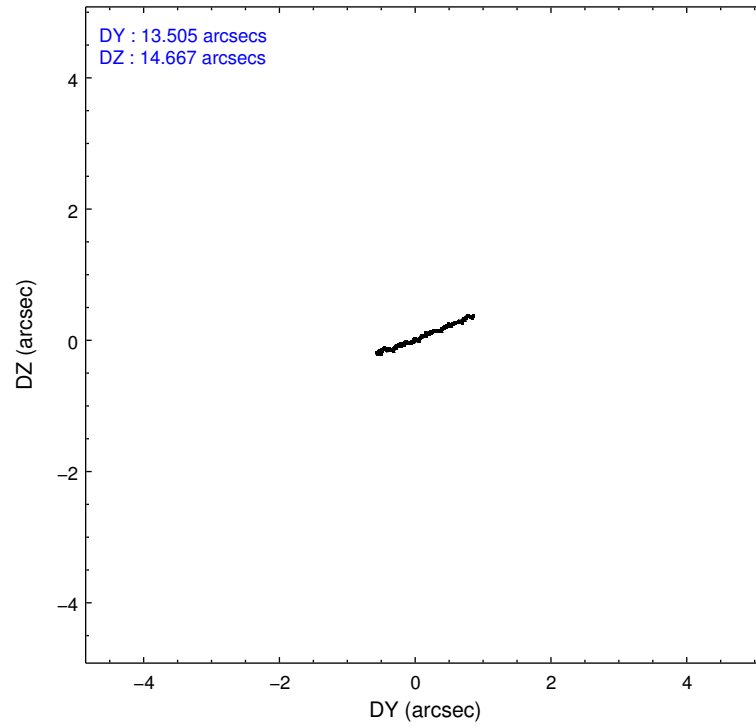
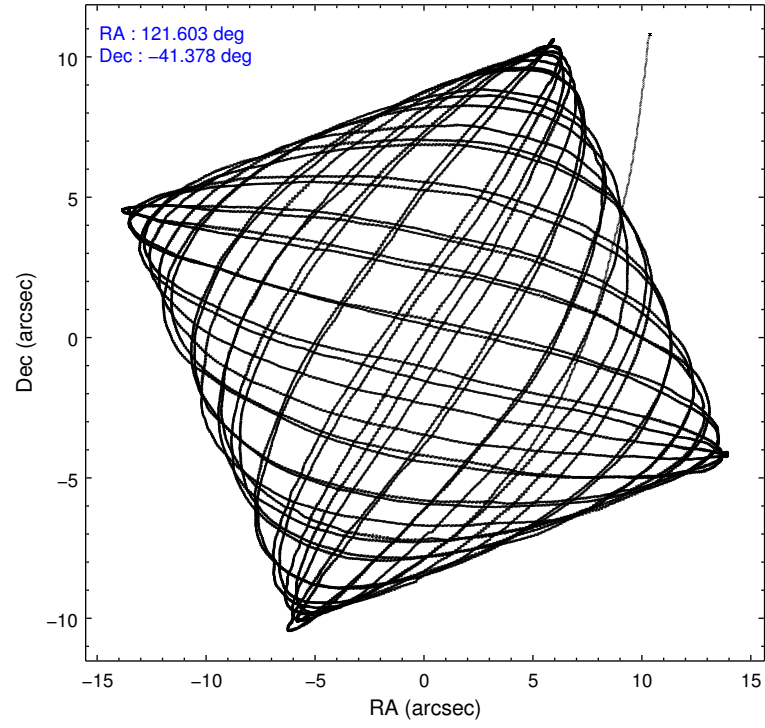
2.1.4 Events

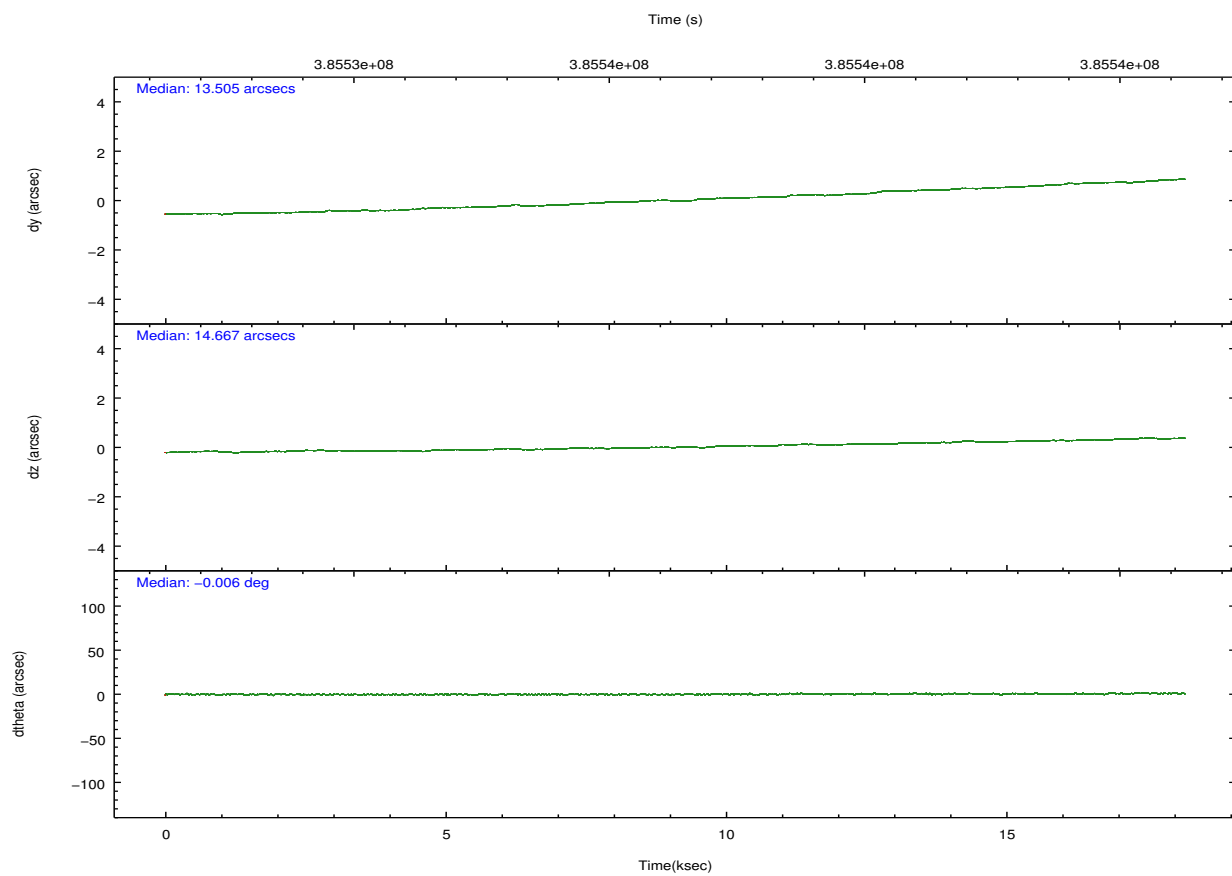
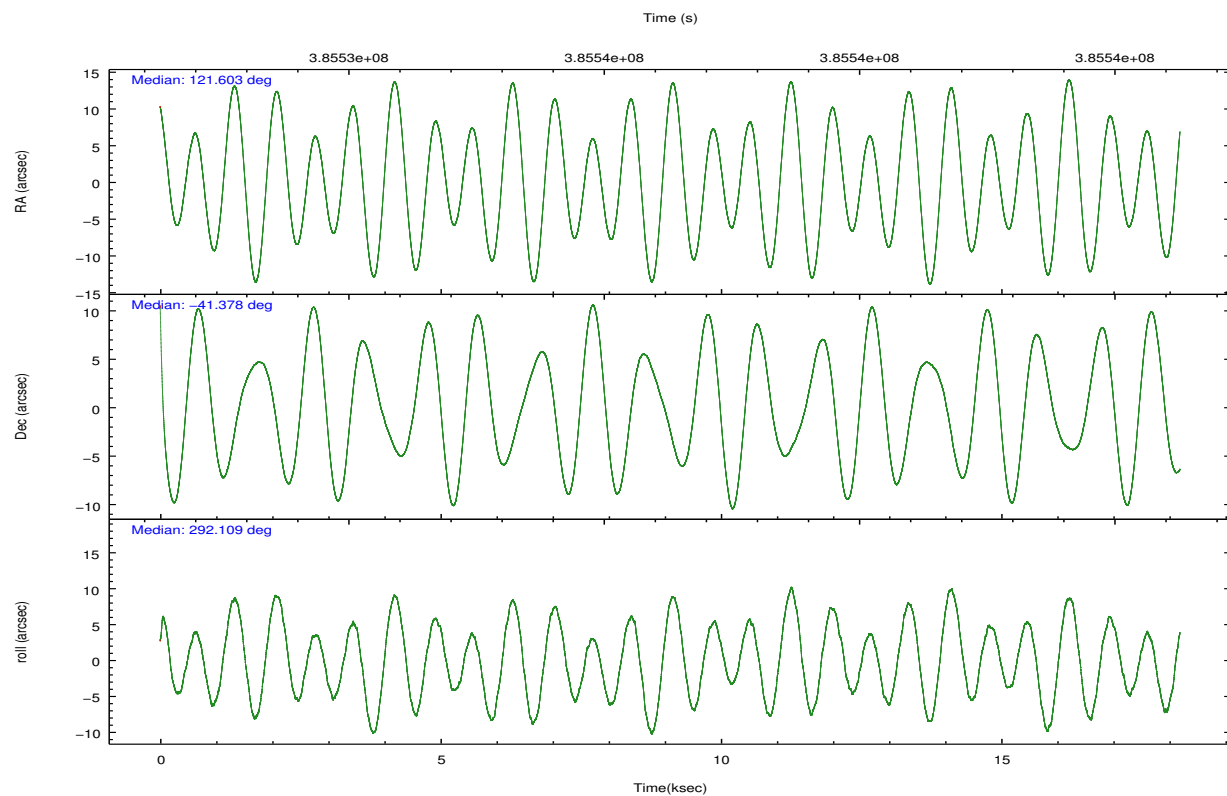
	ccd 2	ccd 3	ccd 5	ccd 6	ccd 7	ccd 8		ccd 2	ccd 3	ccd 5	ccd 6	ccd 7	ccd 8
level 1 events	284316	268258	347096	263772	283129	423780	grade 0 events	3143	3143	30136	3086	10254	15417
rejected events	262629	245157	210550	239092	195080	359195		1%	1%	8%	1%	3%	3%
rejected %	92%	91%	60%	90%	68%	84%	grade 1 events	152	155	394	134	297	291
								0%	0%	0%	0%	0%	0%
							grade 2 events	8114	8468	42864	9474	24563	20063
								2%	3%	12%	3%	8%	4%
							grade 3 events	3438	4008	3266	3855	5707	8242
								1%	1%	0%	1%	2%	1%
							grade 4 events	3542	3458	3069	3627	5714	7824
								1%	1%	0%	1%	2%	1%
							grade 5 events	6318	7077	17228	7168	20227	10676
								2%	2%	4%	2%	7%	2%
							grade 6 events	5295	5938	70454	6691	48836	18438
								1%	2%	20%	2%	17%	4%
							grade 7 events	254314	236011	179685	229737	167531	342829
								89%	87%	51%	87%	59%	80%

2.2 Compared Parameters

Parameter	Planned	Actual	Parameter	Planned	Actual
Instrument	ACIS	ACIS	Obspar format version number	7	7
Detector	ACIS-235678	ACIS-235678	Obspar file type	PREDICTED	ACTUAL
Grating	NONE	NONE	Obspar update status	NONE	UPDATED
Data mode	CC33_FAINT	CC33_FAINT	CCD I0 on	N	N
Observation mode	POINTING	POINTING	CCD I1 on	N	N
[deg] Pointing RA	121.573655	121.602699844138	CCD I2 on	O1	Y
[deg] Pointing Dec	-41.361613	-41.37812920567701	CCD I3 on	Y	Y
[deg] Pointing Roll	291.936734	292.1125520600155	CCD S0 on	N	N
[s] Window start time (MET)	383788866.184000	383788866.184000	CCD S1 on	Y	Y
[s] Window stop time (MET)	386294466.184000	386294466.184000	CCD S2 on	Y	Y
[mm] SIM focus pos	-0.684267	-0.6828225247311905	CCD S3 on	Y	Y
[mm] SIM defocus	0	0.001444936568705701	CCD S4 on	O2	Y
[mm] SIM translation stage pos	-190.132523	-190.1400660498719	CCD S5 on	N	N
[mm] SIM translation stage offset	0	0.00754346686406393	Number of optional ACIS chips dropped	0	0
[s] Observation start time (MET)	385527374.184000	385525670.97048	On-chip summing requested	N	N
Observation start date	2010-03-21T02:55:08	2010-03-21T02:27:50	Subarray requested	NONE	NONE
[s] Observation end time (MET)	385545374.184000	385546095.63402	Alternating exposures requested	N	N
Observation end date	2010-03-21T07:55:08	2010-03-21T08:08:15	[s] Primary exposure time	0.000000	0
Read mode	CONTINUOUS	CONTINUOUS			

2.3 Aspect



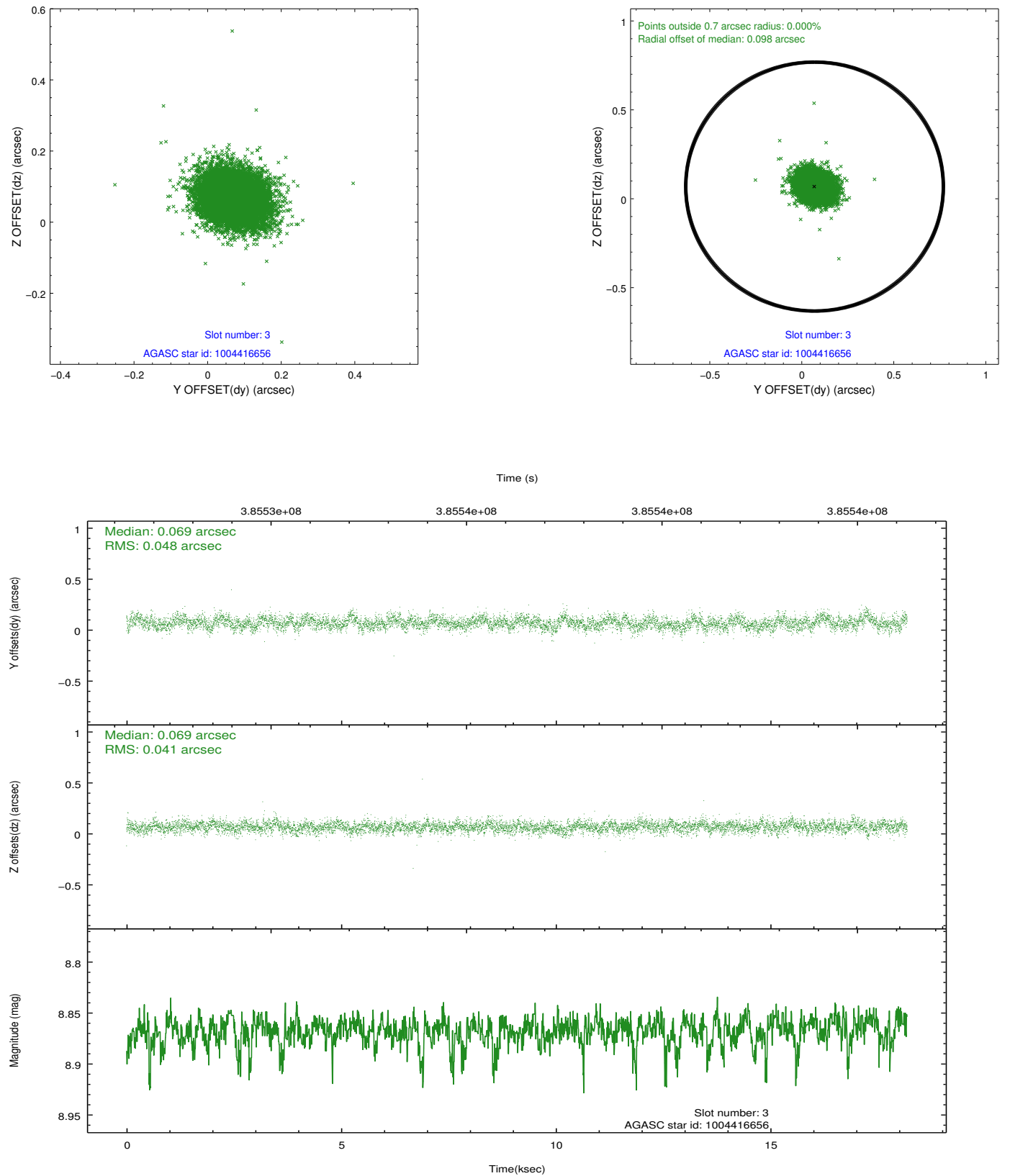


Slot Statistics

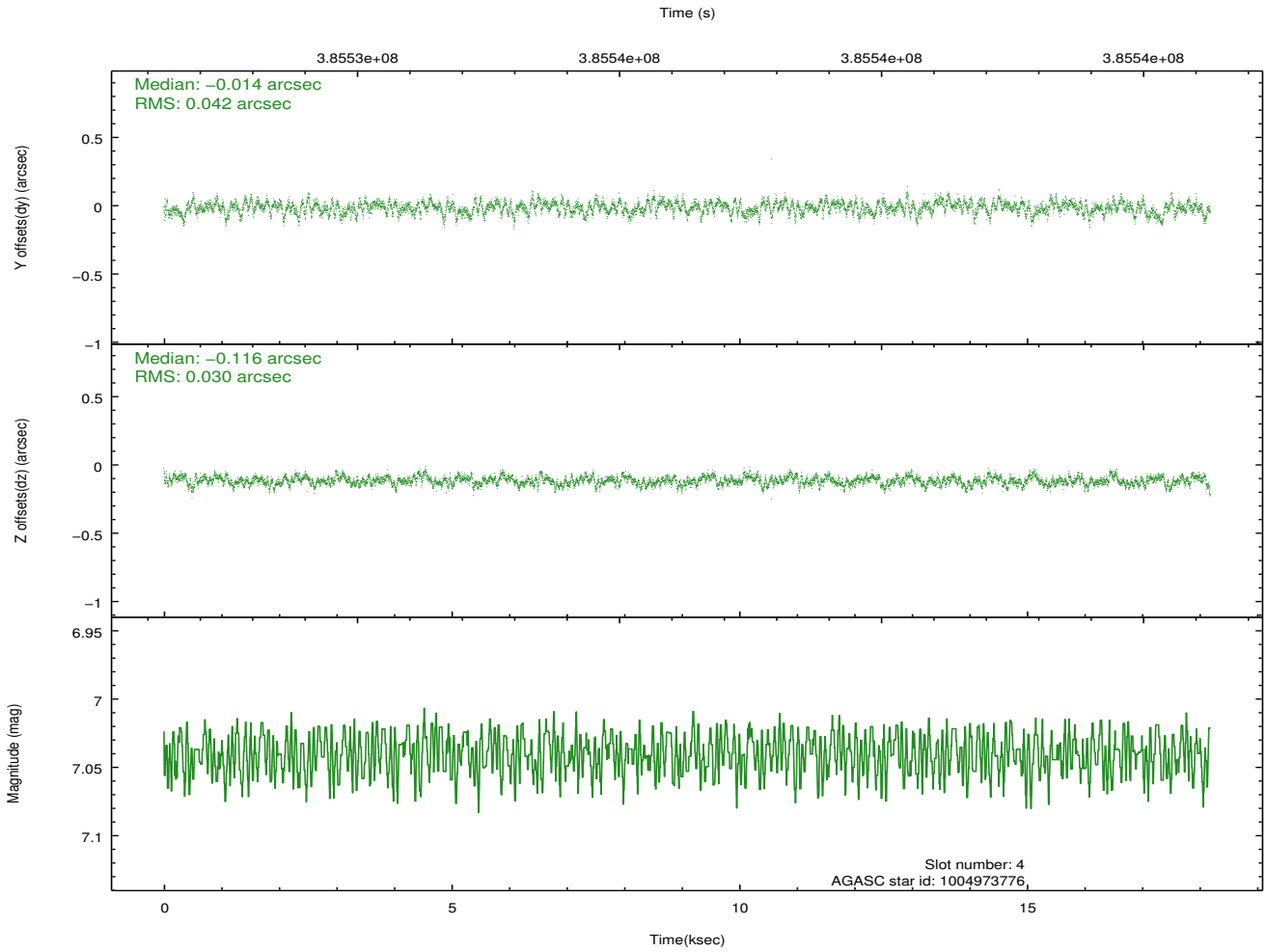
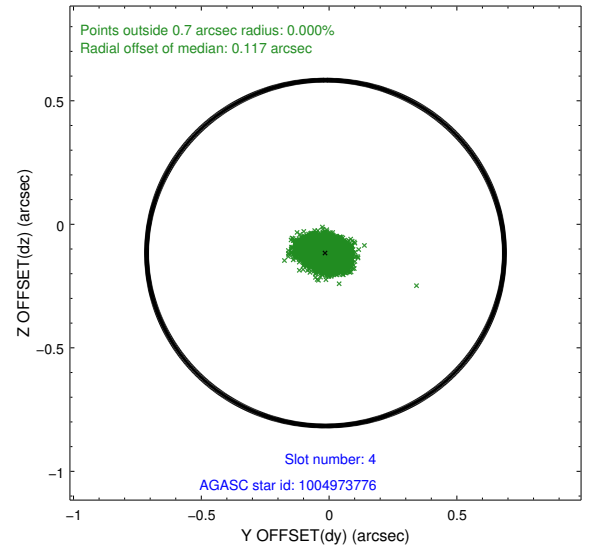
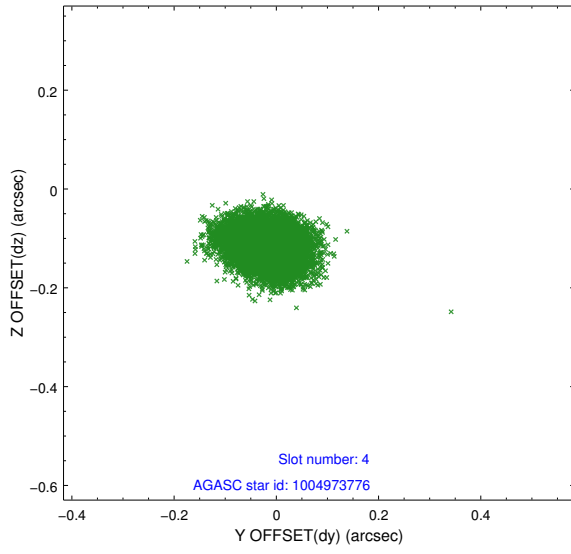
slot	status	id	mag	n_pts	med_dy	med_dz	dr1	dr2	ra	dec	mean_y	mean_z
0	FID	ACIS-S-1	7.04	4436	0.078	-0.045	0.010	0.017	0.000000	0.000000	929.65	-1731.74
1	FID	ACIS-S-5	7.08	4434	-0.172	0.041	0.015	0.023	0.000000	0.000000	-1819.50	165.64
2	FID	ACIS-S-6	7.18	4435	0.074	0.016	0.018	0.026	0.000000	0.000000	394.93	809.85
3	GUIDE	1004416656	8.87	8866	0.069	0.069	0.066	0.109	121.697217	-40.742577	-1940.94	1145.28
4	GUIDE	1004973776	7.04	8870	-0.014	-0.116	0.055	0.091	121.821280	-41.735378	1497.42	114.36
5	GUIDE	1004973784	7.64	8868	0.157	0.010	0.074	0.117	121.932741	-41.812272	1867.06	287.23
6	GUIDE	1004412976	9.33	8852	0.040	0.115	0.107	0.170	120.810429	-41.043846	-1826.38	-1498.15
7	GUIDE	1004929600	7.27	8870	-0.255	-0.075	0.063	0.097	122.465633	-41.276185	627.34	2348.79

2.4 Star Slots

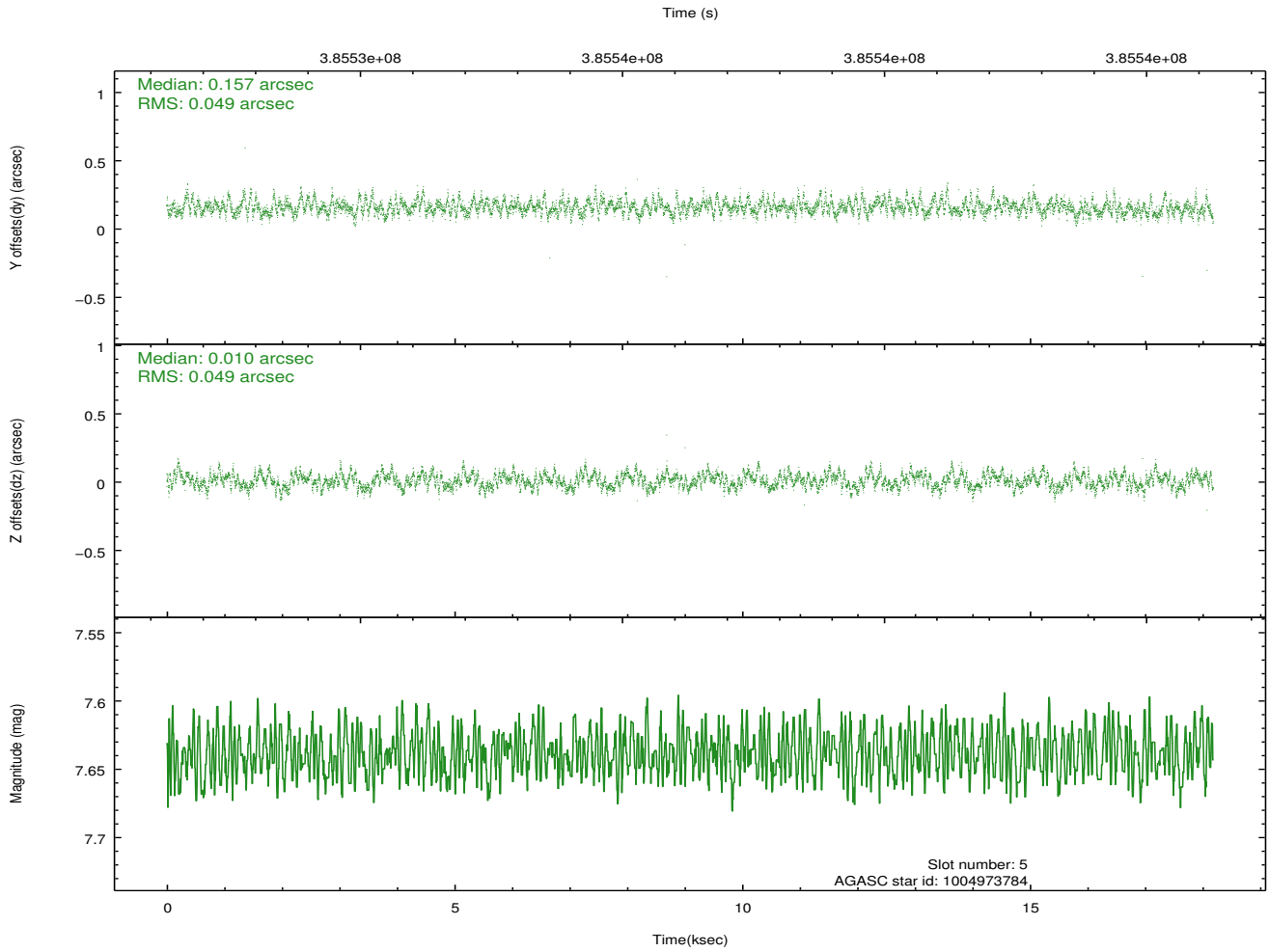
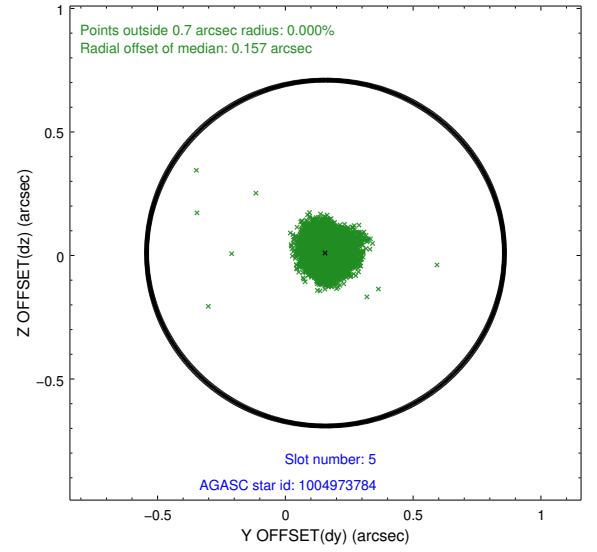
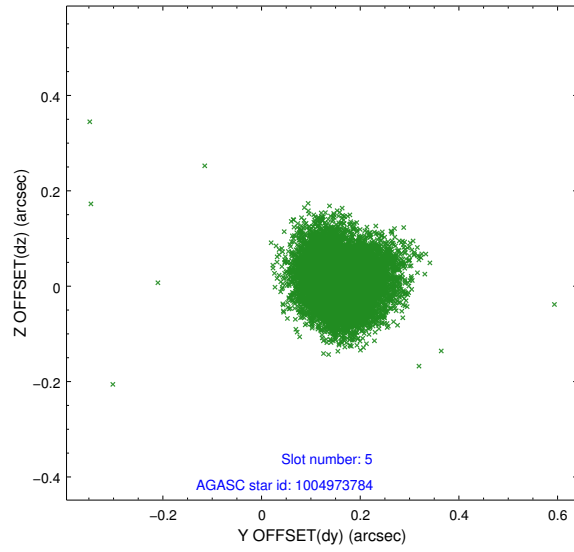
2.4.1 Slot 3



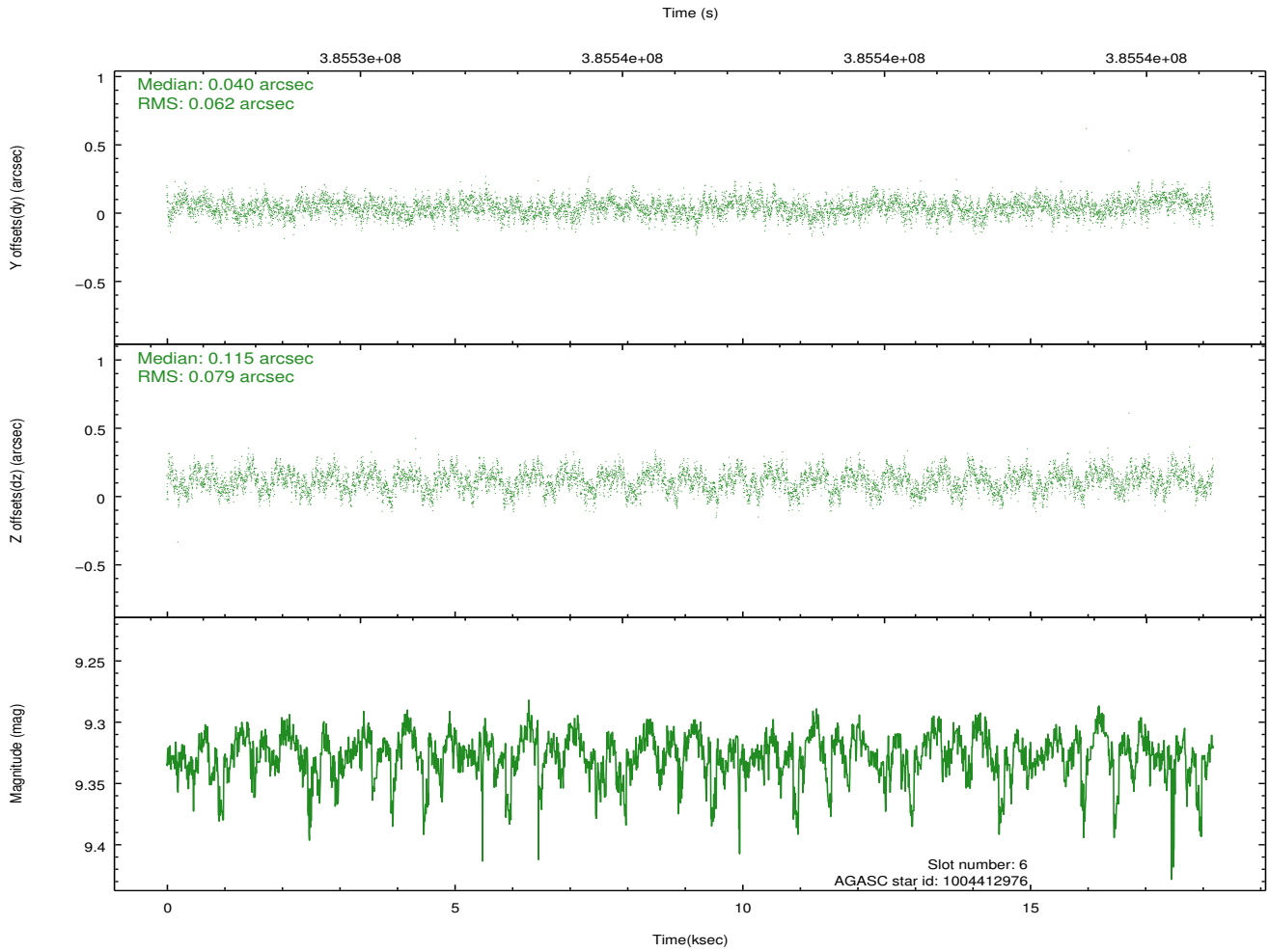
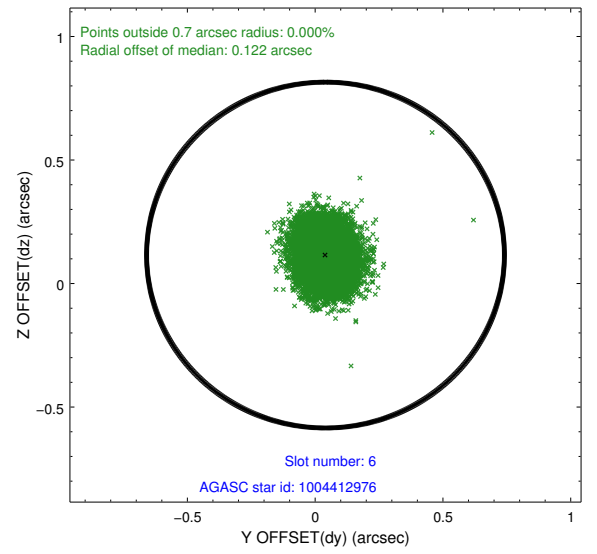
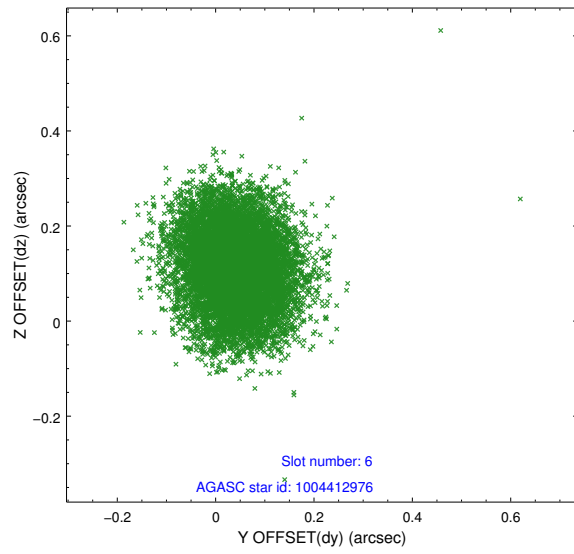
2.4.2 Slot 4



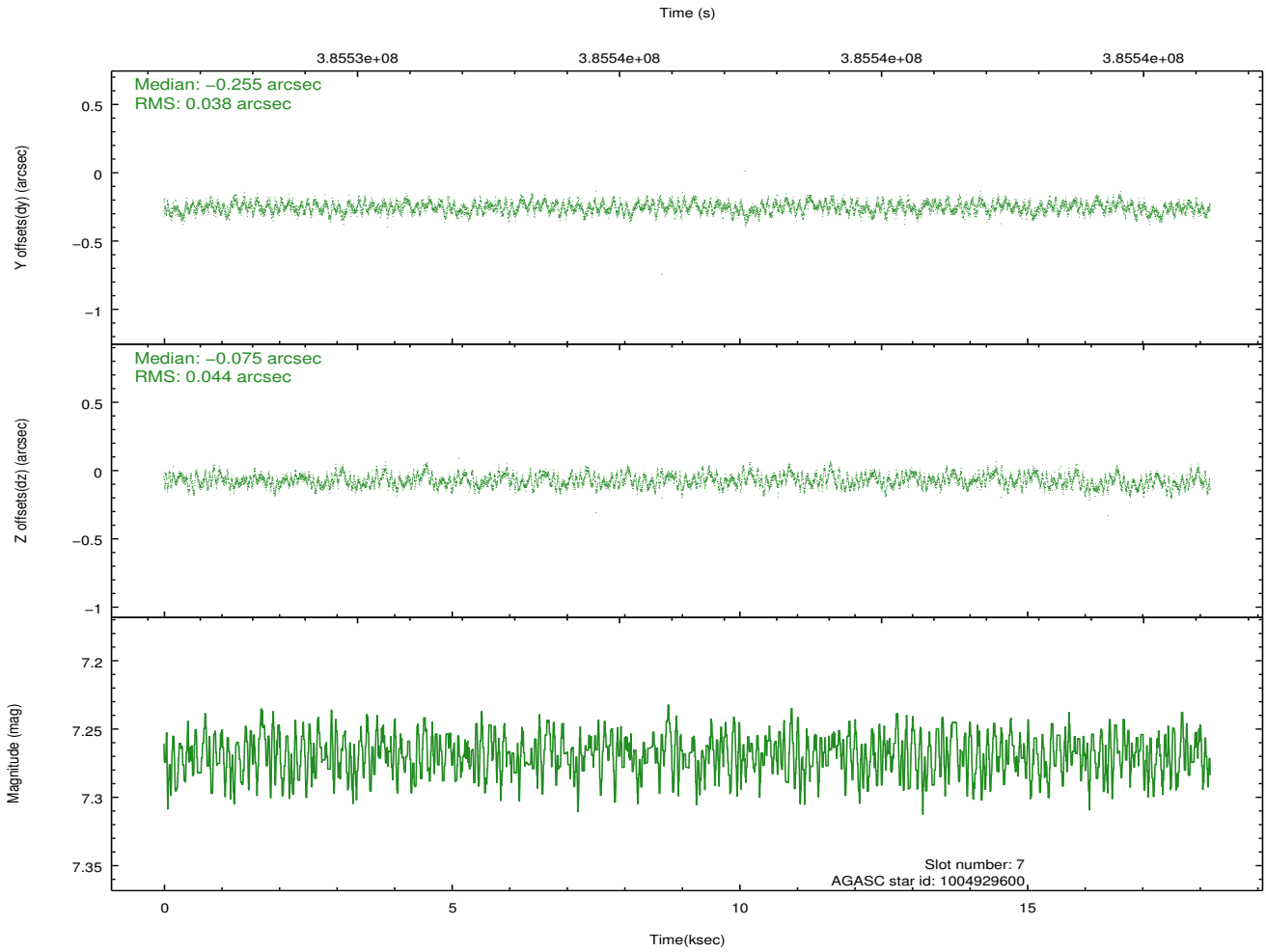
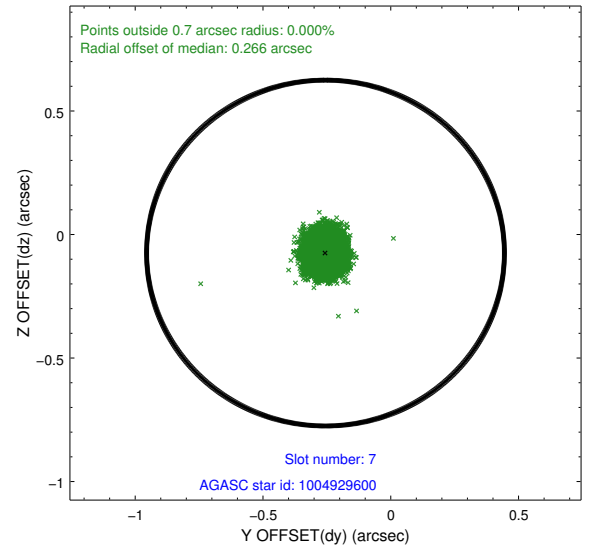
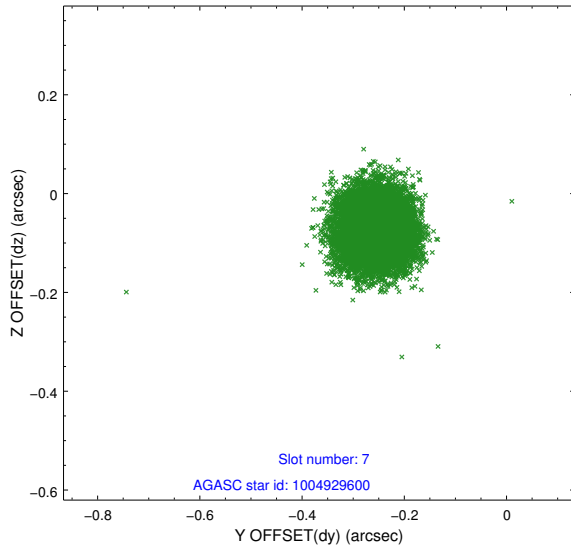
2.4.3 Slot 5



2.4.4 Slot 6

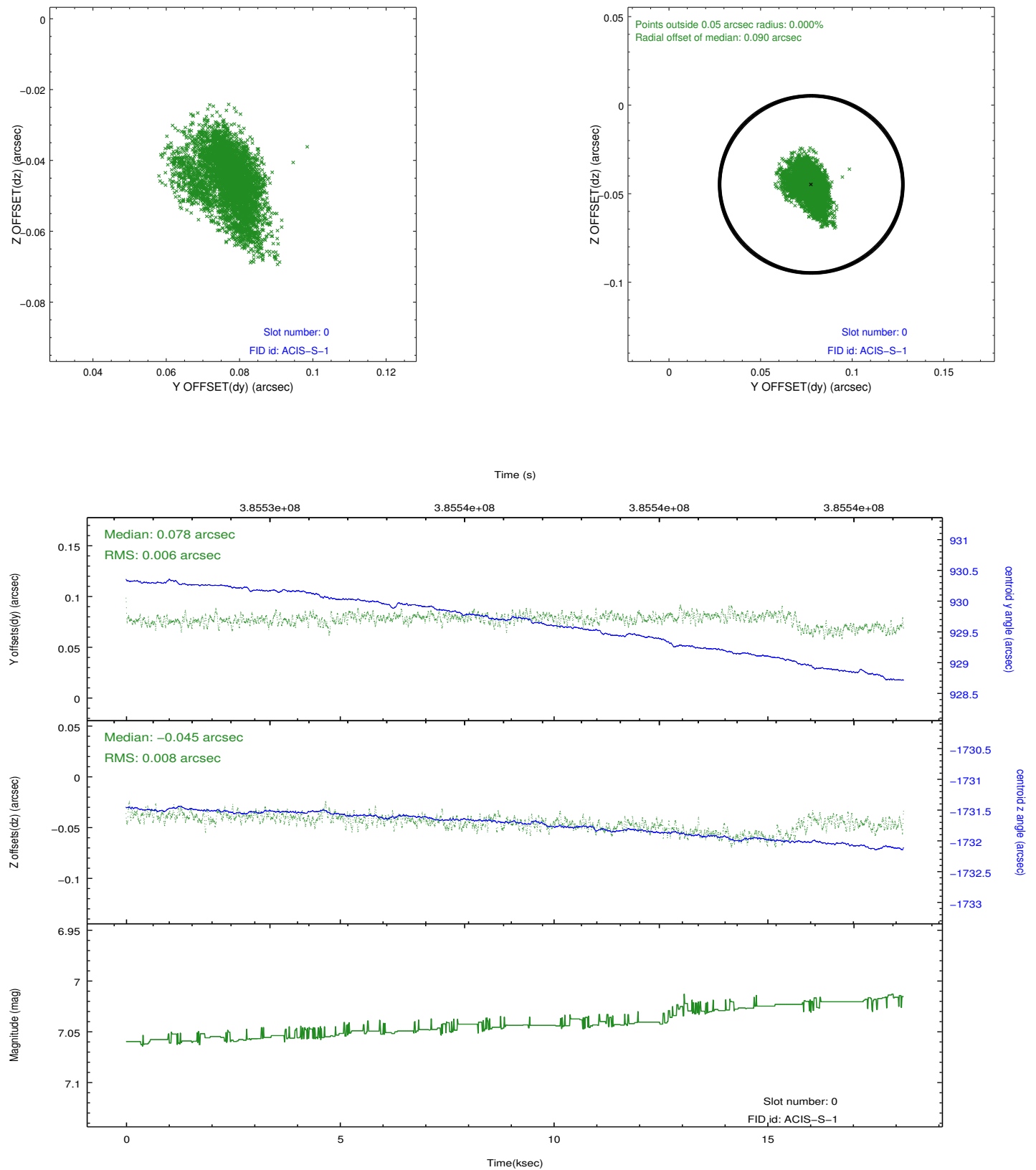


2.4.5 Slot 7

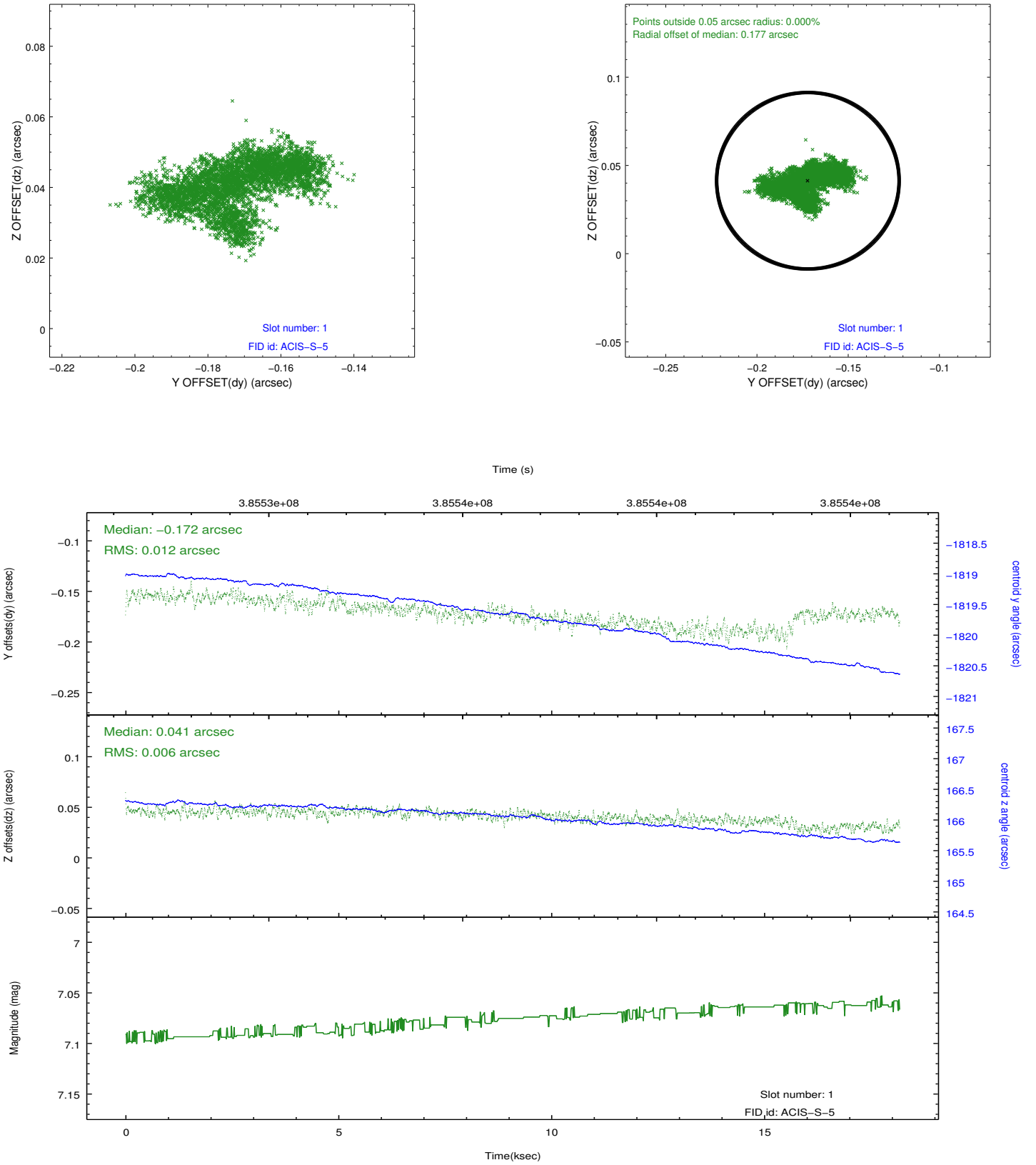


2.5 FID Slots

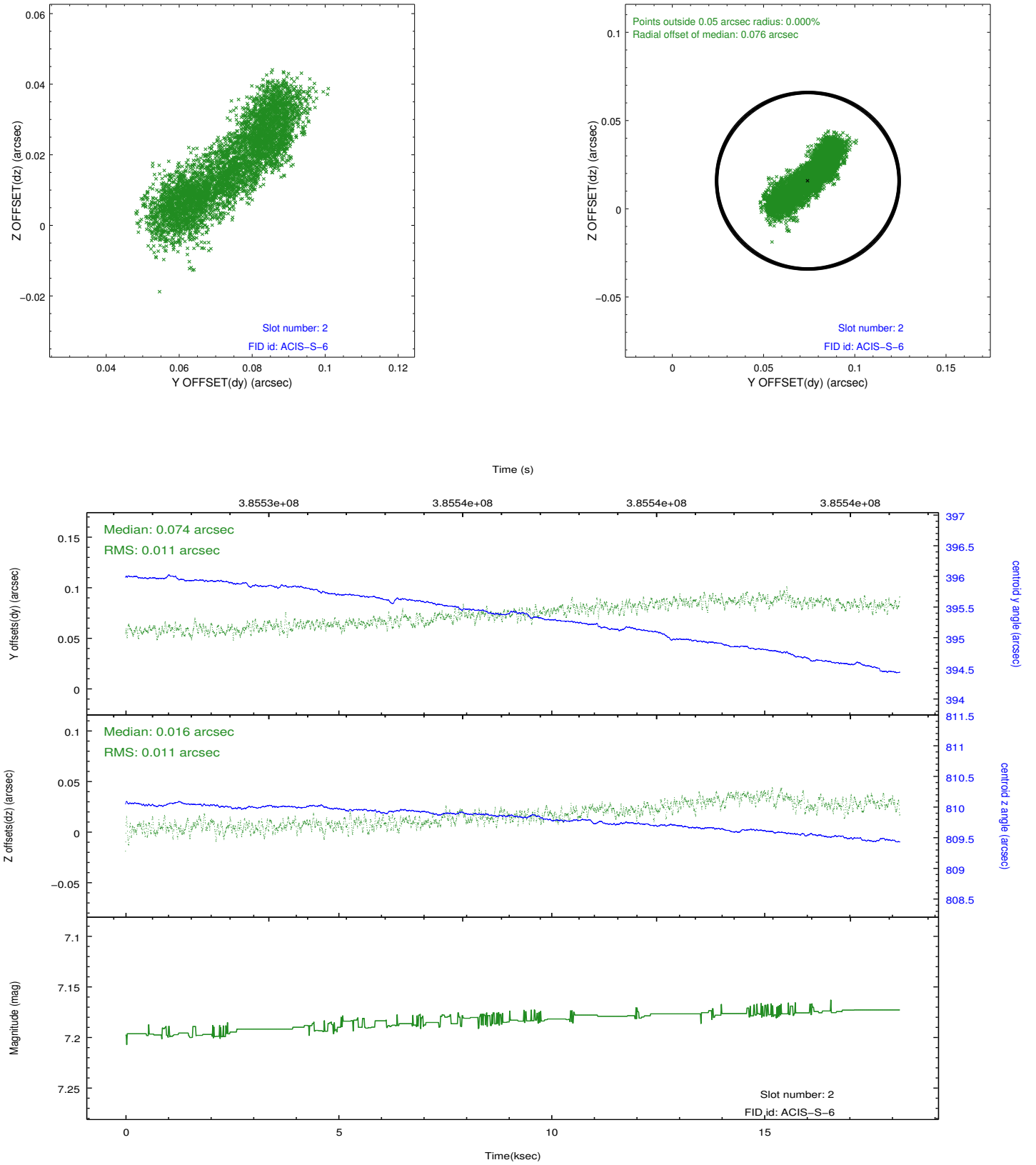
2.5.1 Slot 0



2.5.2 Slot 1



2.5.3 Slot 2



A Summary

A.1 Status

V&V Scientist	Joy Nichols
V&V Date (YYYY-MM-DD)	2012.06.25
V&V Edition	1
V&V Disposition and Status	OK
V&V Charge Time	18.17925

A.2 Comments