

V&V Reference Report

L2 ASCDS Version : 8.4.5

Observation 11495 - L2 Version 2
Chandra X-Ray Center

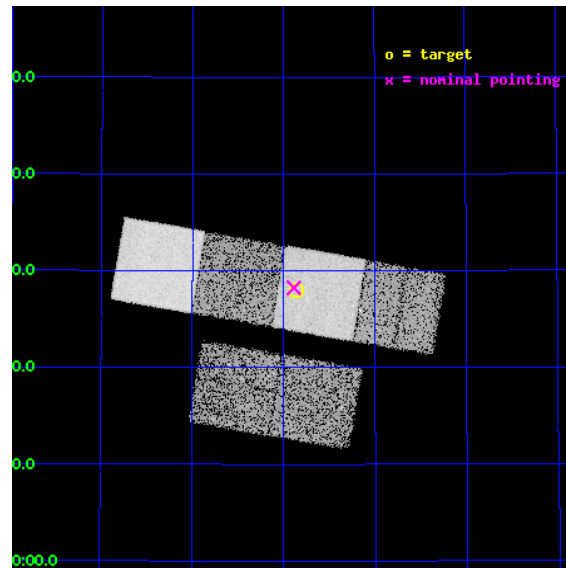
L2 Processing Date : Jul 3 2012

Contents

1	Front	2
2	OBI	3
2.1	OBI	3
2.1.1	Images	3
2.1.2	Bias	3
2.1.3	Parameters	4
2.1.4	Events	4
2.2	Compared Parameters	5
2.3	Aspect	6
2.4	Star Slots	9
2.4.1	Slot 3	9
2.4.2	Slot 4	10
2.4.3	Slot 5	11
2.4.4	Slot 6	12
2.4.5	Slot 7	13
2.5	FID Slots	14
2.5.1	Slot 0	14
2.5.2	Slot 1	15
2.5.3	Slot 2	16
A	Summary	17
A.1	Status	17
A.2	Comments	17

1 Front

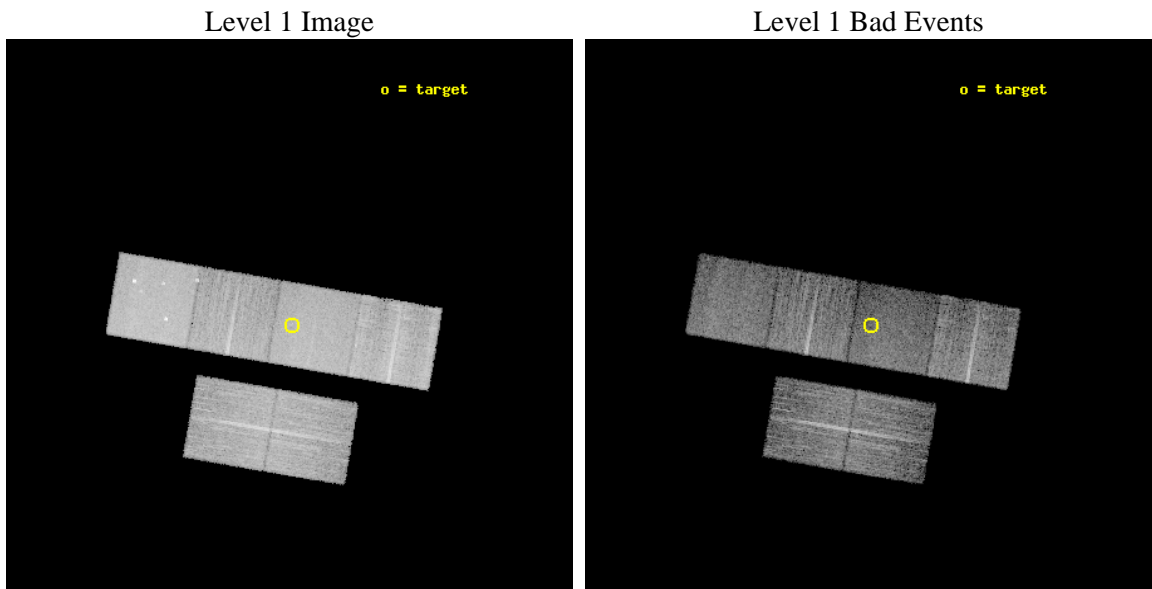
seq_num	702081	Sequence number
obs_id	11495	Observation id
title	Hunting for Intrinsically X-ray Weak Quasars: The Case of PHL 1811 Analogs	Proposal title
observer	Prof. William Brandt	Principal investigator
object	SDSS J1125+5028	Source name
dtcycle	0	
cycle	P	events from which exps? Prim/Second/Both
ra_targ	171.46625	Observer's specified target RA [deg]
dec_targ	50.467667	Observer's specified target Dec [deg]
ra_nom	171.47195728799	Nominal RA [deg]
dec_nom	50.47087424053	Nominal Dec [deg]
roll_nom	9.7673387125179	Nominal Roll [deg]
revision	2	Processing version of data
ontime	9849.599963367	Sum of GTIs [s]
livetime	9724.8783979138	Livetime [s]
ontime2	9849.599963367	Sum of GTIs [s]
ontime3	9846.3589730263	Sum of GTIs [s]
ontime5	9849.599963367	Sum of GTIs [s]
ontime6	9849.599963367	Sum of GTIs [s]
ontime7	9849.599963367	Sum of GTIs [s]
ontime8	9849.599963367	Sum of GTIs [s]
l2events	116267	Number of level 2 events



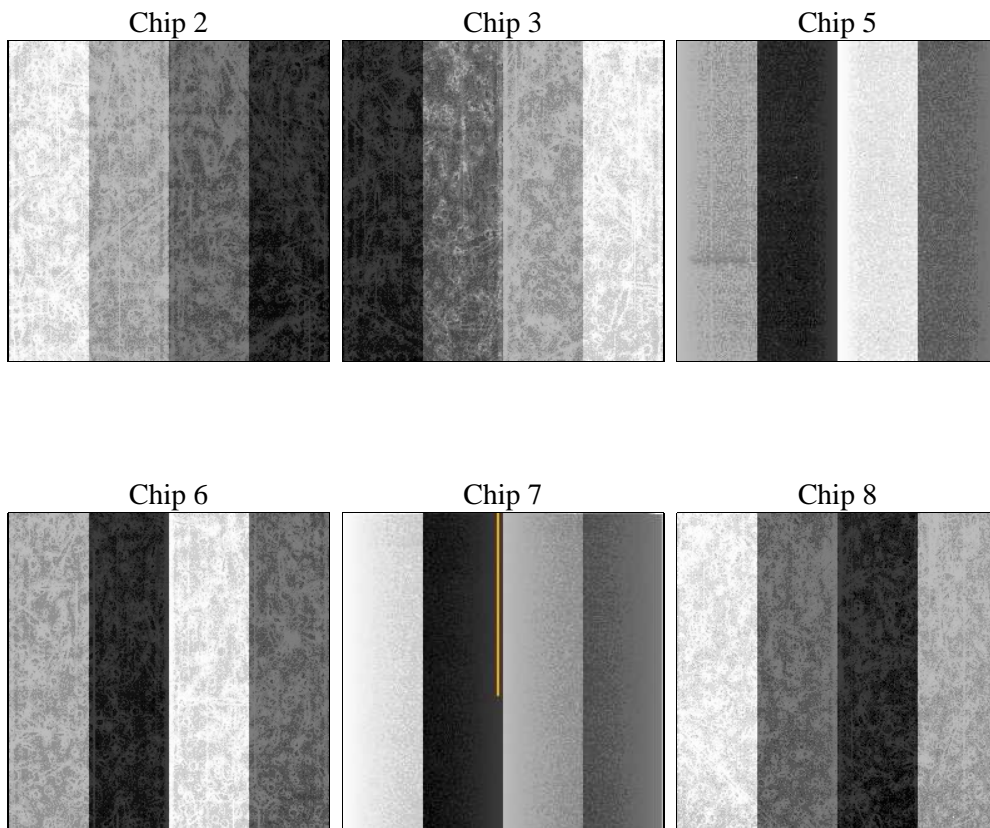
2 OBI

2.1 OBI

2.1.1 Images



2.1.2 Bias



2.1.3 Parameters

obi_num	0	Obi number	sched_exp_time	9800.000000	[s] Scheduled observation exposure time
ascdsver	8.4.5	Processing system revision	ontime	9849.599963367	Sum of GTIs [s]
caldbver	4.5.0	 	ontime2	9849.599963367	Sum of GTIs [s]
date	2012-07-03T23:46:57	Date and time of file creation	ontime3	9846.3589730263	Sum of GTIs [s]
revision	2	Processing version of data	ontime5	9849.599963367	Sum of GTIs [s]
			ontime6	9849.599963367	Sum of GTIs [s]
			ontime7	9849.599963367	Sum of GTIs [s]
			ontime8	9849.599963367	Sum of GTIs [s]
			l1events	503165	Number of level 1 events

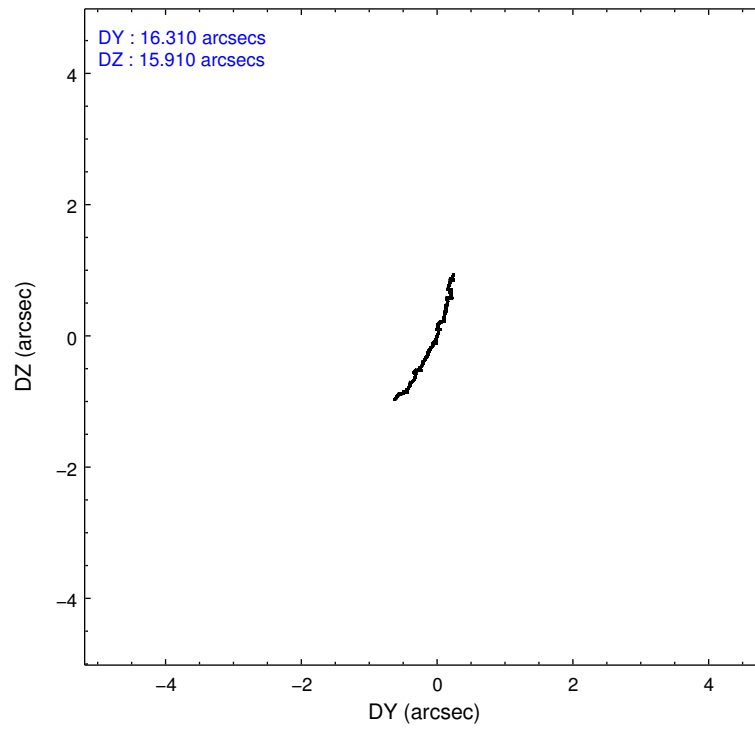
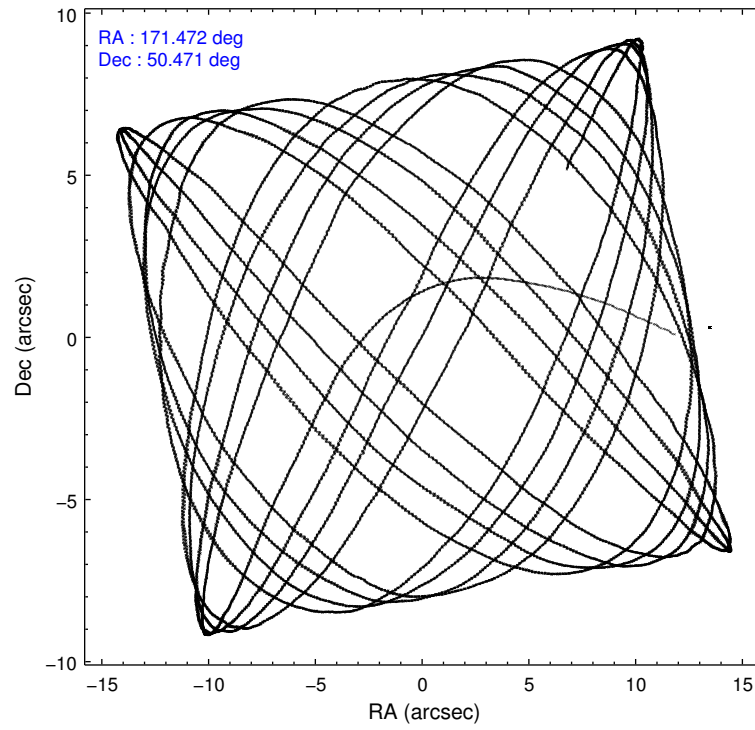
2.1.4 Events

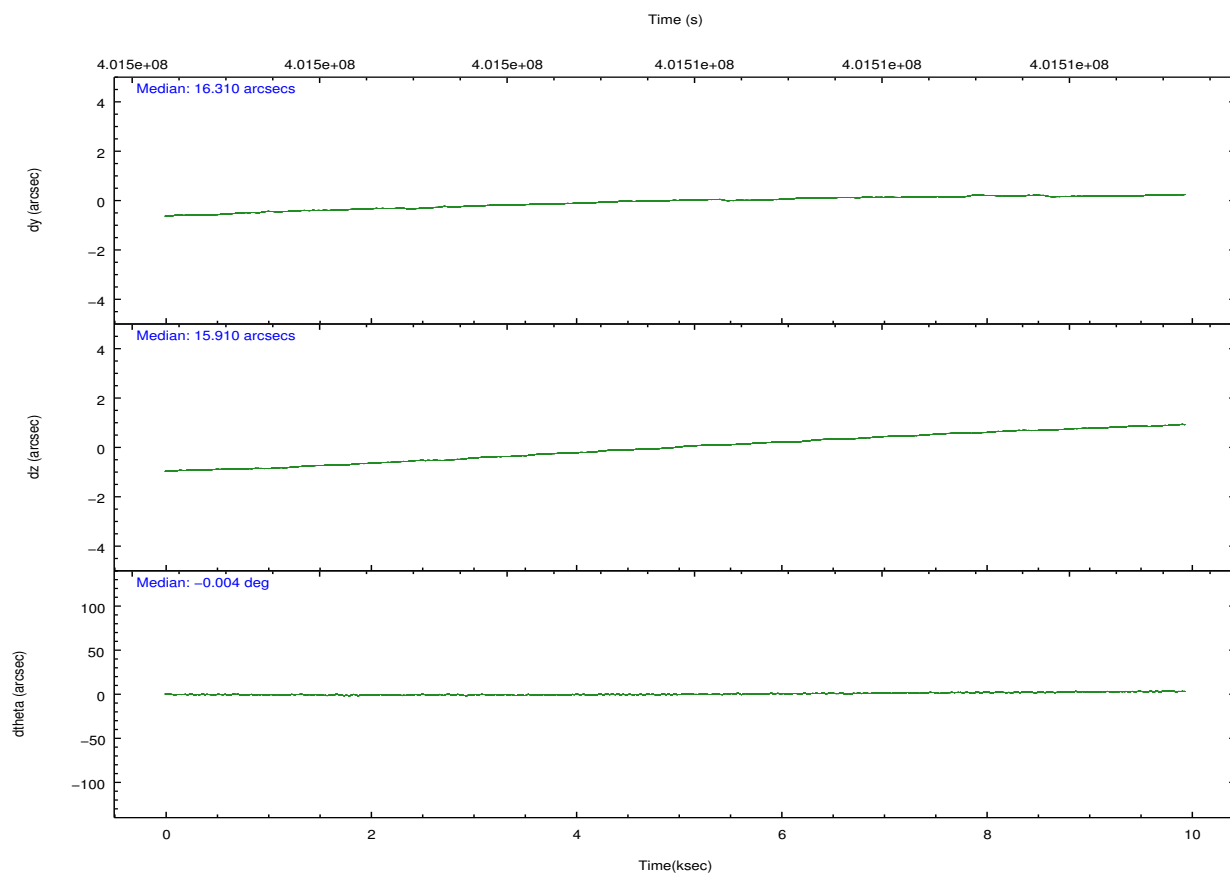
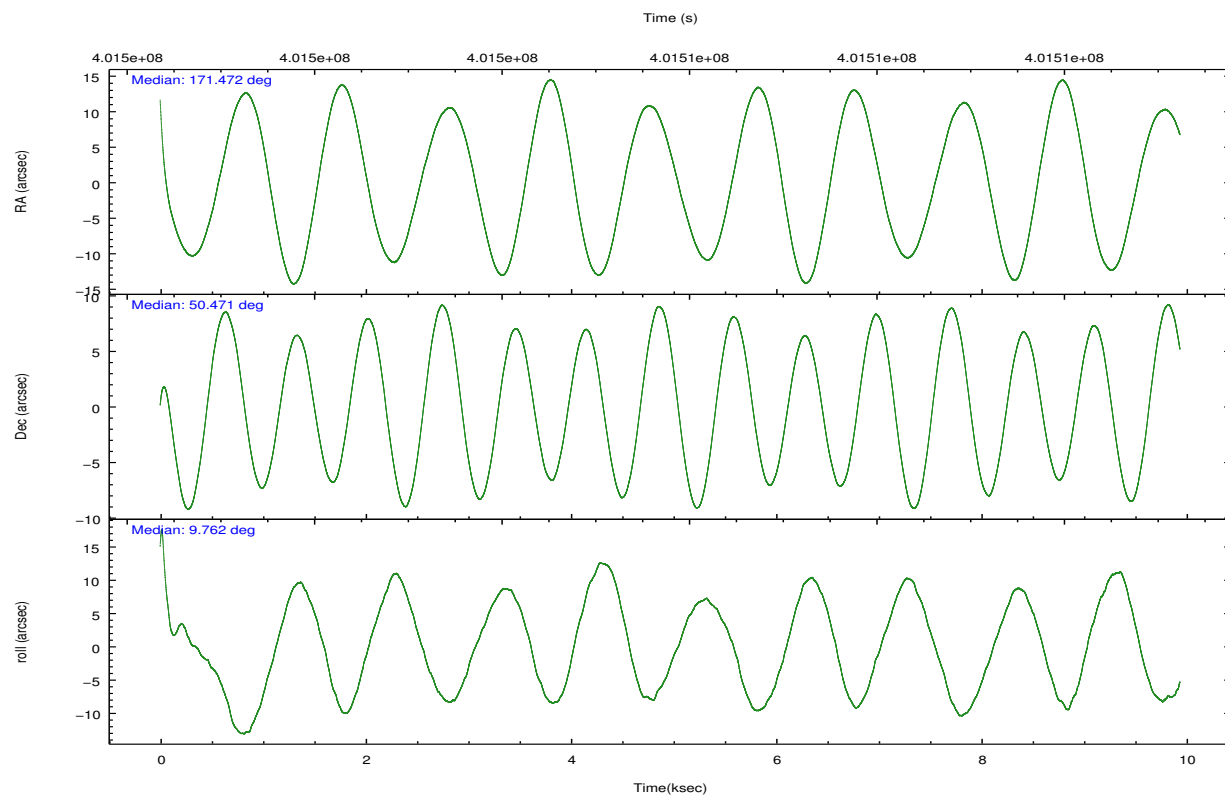
	ccd 2	ccd 3	ccd 5	ccd 6	ccd 7	ccd 8		ccd 2	ccd 3	ccd 5	ccd 6	ccd 7	ccd 8
level 1 events	72400	69543	109743	70107	87107	94265	grade 0 events	2741	2598	5966	2797	3602	7600
rejected events	64814	62297	55197	62110	47736	69283		3%	3%	5%	3%	4%	8%
rejected %	89%	89%	50%	88%	54%	73%	grade 1 events	38	34	251	40	103	86
								0%	0%	0%	0%	0%	0%
							grade 2 events	1835	1543	16533	1778	8117	5749
								2%	2%	15%	2%	9%	6%
							grade 3 events	735	820	1995	829	3500	2652
								1%	1%	1%	1%	4%	2%
							grade 4 events	776	815	1914	835	3592	2432
								1%	1%	1%	1%	4%	2%
							grade 5 events	2817	3245	8254	3293	9073	4712
								3%	4%	7%	4%	10%	4%
							grade 6 events	1507	1475	28172	1760	20587	6592
								2%	2%	25%	2%	23%	6%
							grade 7 events	61951	59013	46658	58775	38533	64442
								85%	84%	42%	83%	44%	68%

2.2 Compared Parameters

Parameter	Planned	Actual	Parameter	Planned	Actual
Instrument	ACIS	ACIS	Obspar format version number	7	7
Detector	ACIS-235678	ACIS-235678	Obspar file type	PREDICTED	ACTUAL
Grating	NONE	NONE	Obspar update status	NONE	UPDATED
Data mode	FAINT	FAINT	CCD I0 on	N	N
Observation mode	POINTING	POINTING	CCD I1 on	N	N
[deg] Pointing RA	171.439330	171.4719572879853	CCD I2 on	O2	Y
[deg] Pointing Dec	50.453099	50.4708742405301	CCD I3 on	O1	Y
[deg] Pointing Roll	9.635850	9.767338712517889	CCD S0 on	N	N
[mm] SIM focus pos	-0.684267	-0.6828225247311905	CCD S1 on	Y	Y
[mm] SIM defocus	0	0.001444936568705701	CCD S2 on	Y	Y
[mm] SIM translation stage pos	-190.132523	-190.1425803651734	CCD S3 on	Y	Y
[mm] SIM translation stage offset	0	0.01005778216563158	CCD S4 on	Y	Y
[s] Observation start time (MET)	401500961.184000	401499928.29814	CCD S5 on	N	N
Observation start date	2010-09-22T00:01:35	2010-09-21T23:45:28	Number of optional ACIS chips dropped	0	0
[s] Observation end time (MET)	401510761.184000	401511420.08623	On-chip summing requested	N	N
Observation end date	2010-09-22T02:44:55	2010-09-22T02:57:00	Subarray requested	NONE	NONE
Read mode	TIMED	TIMED	Alternating exposures requested	N	N
			[s] Primary exposure time	0.000000	3.2

2.3 Aspect



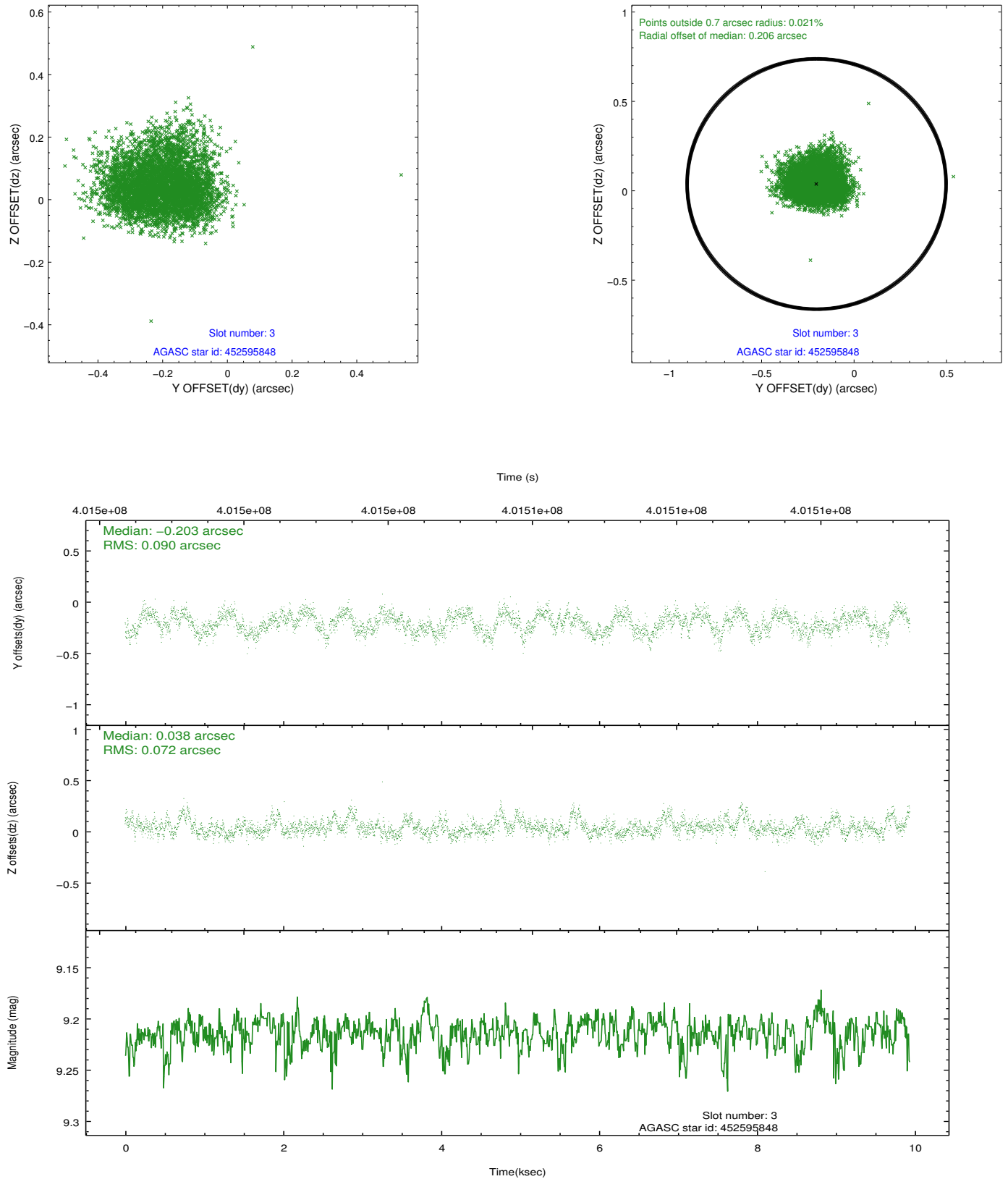


Slot Statistics

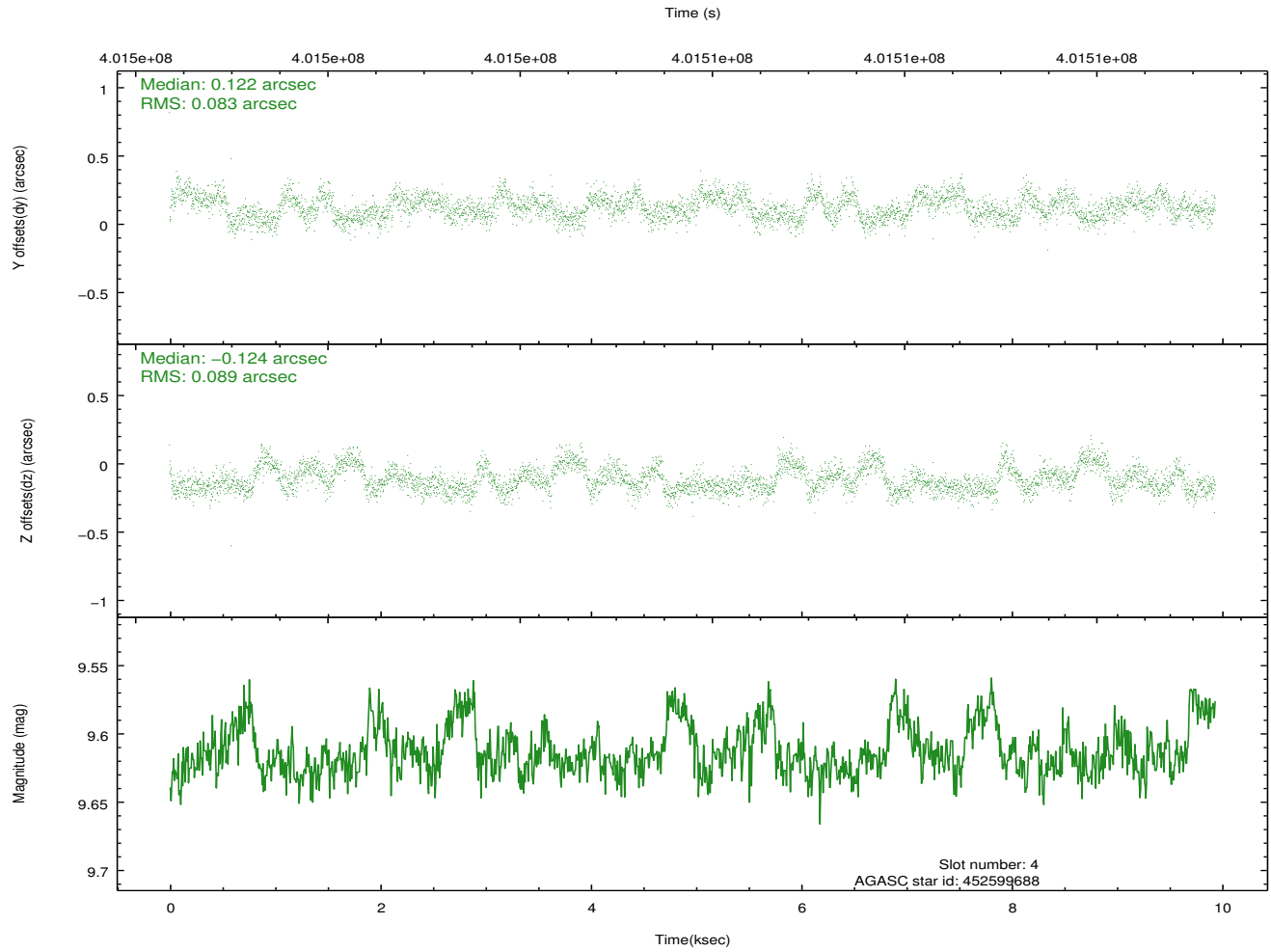
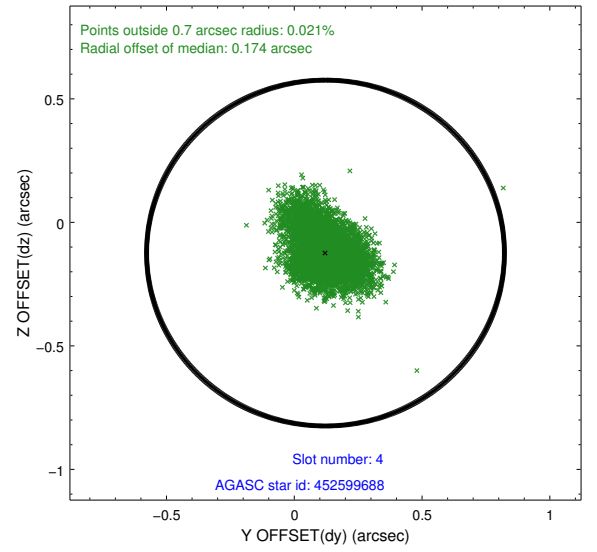
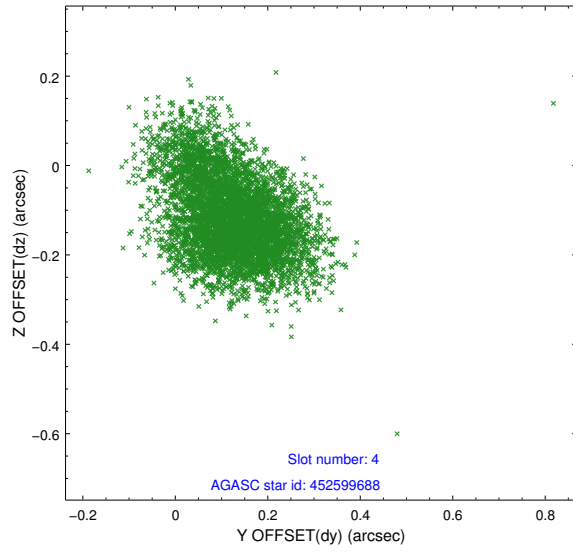
slot	status	id	mag	n_pts	med_dy	med_dz	dr1	dr2	ra	dec	mean_y	mean_z
0	FID	ACIS-S-2	6.93	2424	-0.089	-0.014	0.014	0.020	0.000000	0.000000	-769.31	-1737.26
1	FID	ACIS-S-4	7.01	2424	0.158	0.045	0.013	0.033	0.000000	0.000000	2143.96	170.74
2	FID	ACIS-S-5	7.04	2424	-0.105	-0.024	0.013	0.018	0.000000	0.000000	-1821.50	164.93
3	GUIDE	452595848	9.21	4842	-0.203	0.038	0.124	0.193	172.416829	50.201541	2072.02	-1254.90
4	GUIDE	452599688	9.61	4845	0.122	-0.124	0.128	0.213	170.489137	50.688160	-1991.57	1210.36
5	GUIDE	452601152	8.97	4840	-0.002	0.124	0.084	0.142	172.285078	50.262527	1806.00	-990.39
6	GUIDE	452609656	8.51	4847	0.199	-0.192	0.071	0.116	171.307828	50.498988	-269.01	213.95
7	GUIDE	452605048	9.94	4840	-0.135	0.134	0.159	0.268	172.007971	49.846766	936.96	-2367.86

2.4 Star Slots

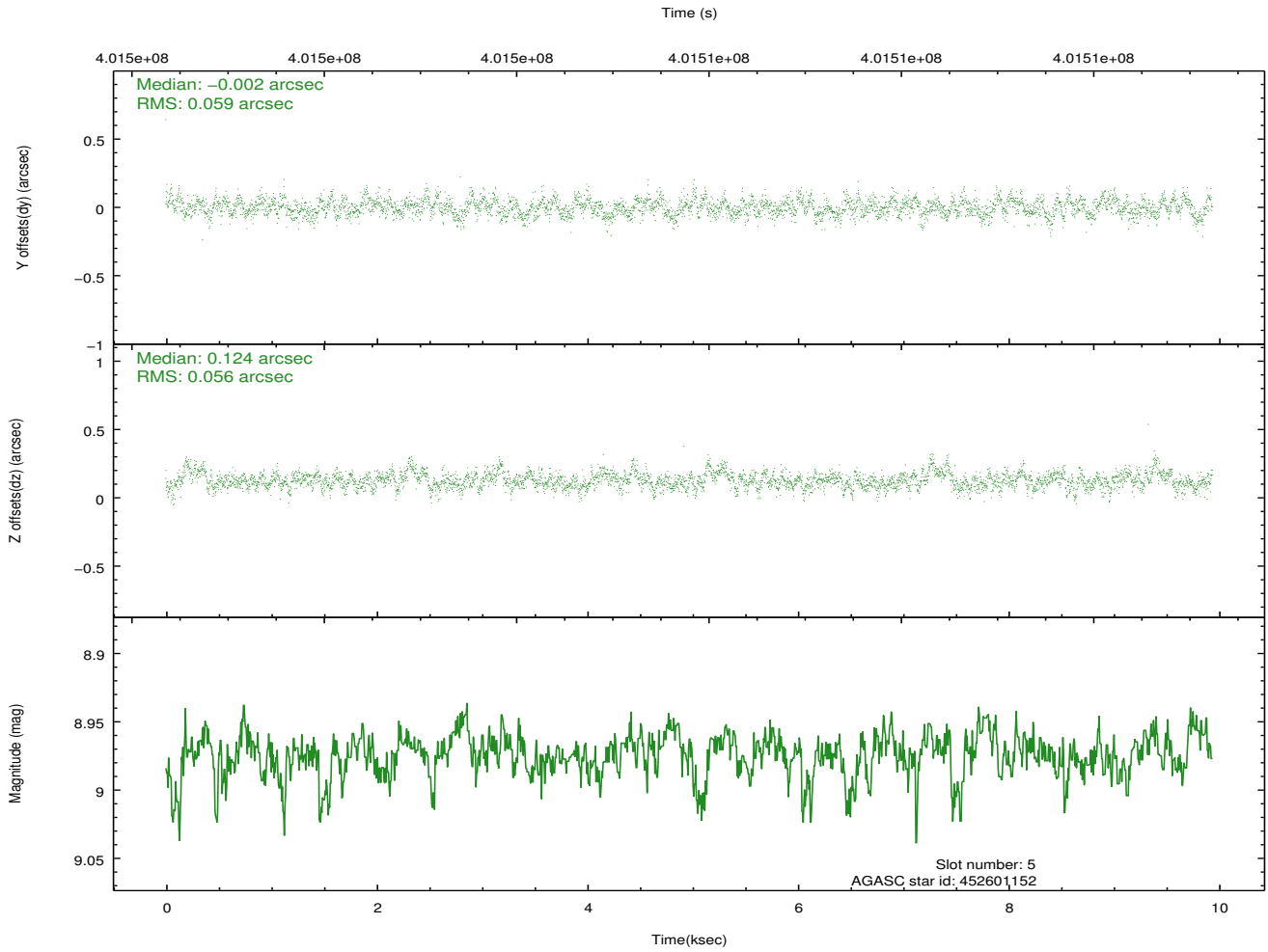
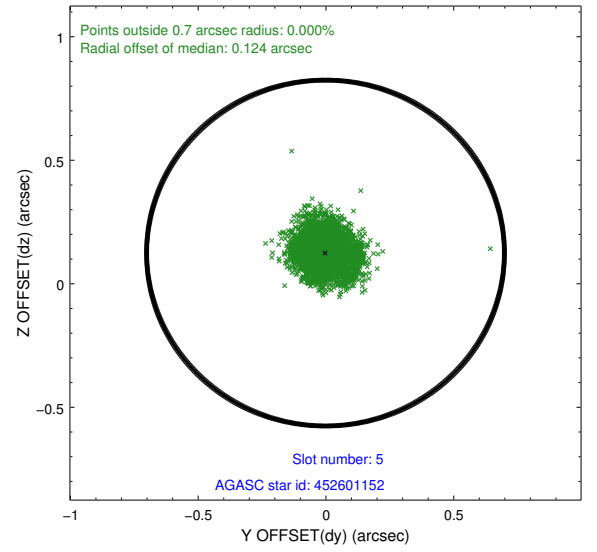
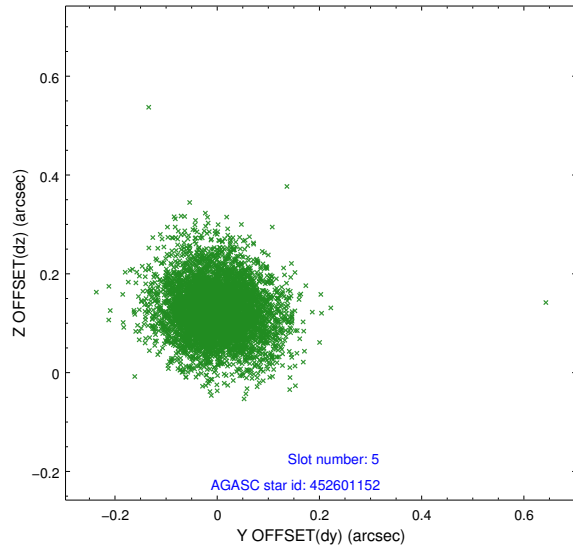
2.4.1 Slot 3



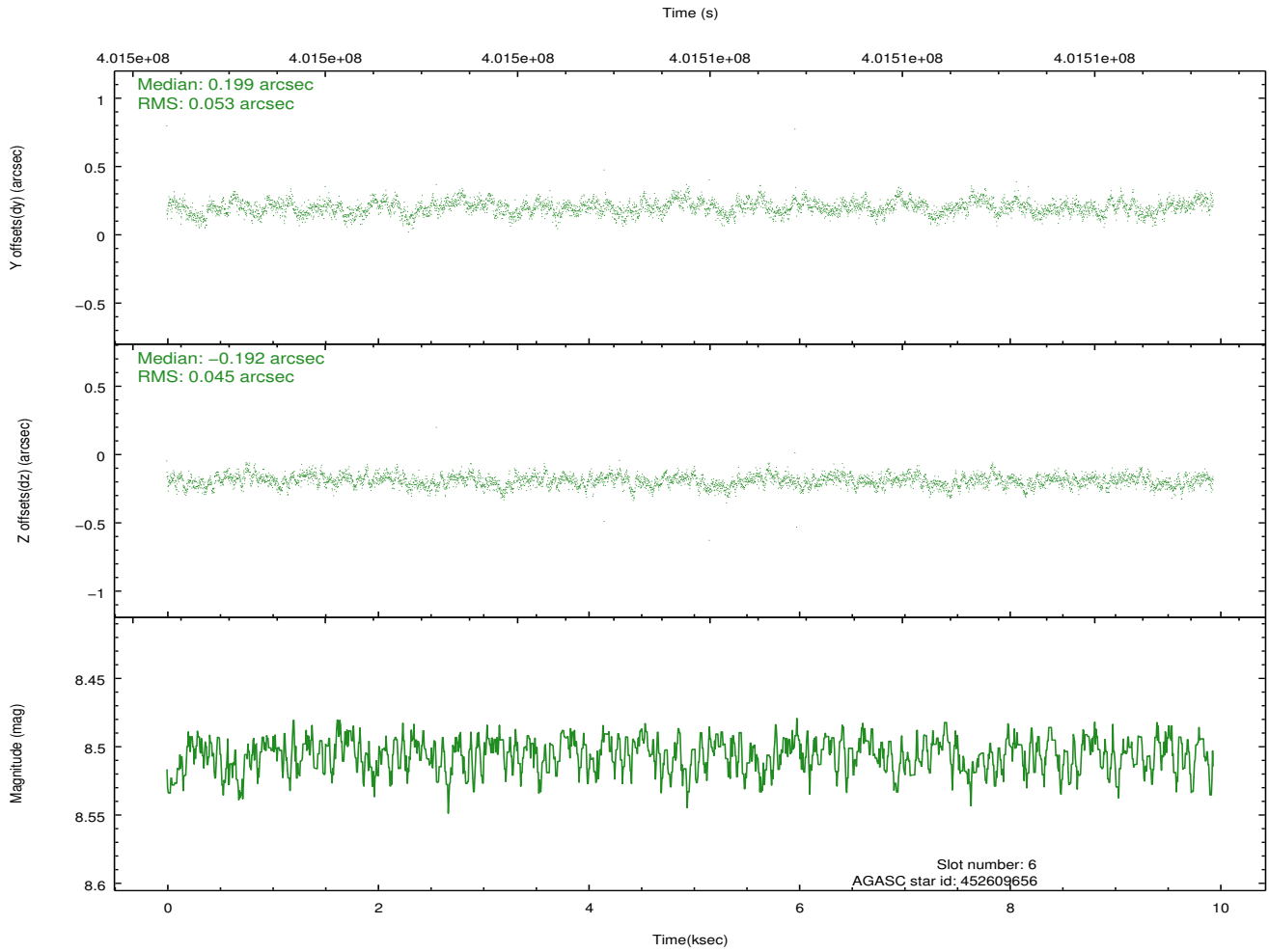
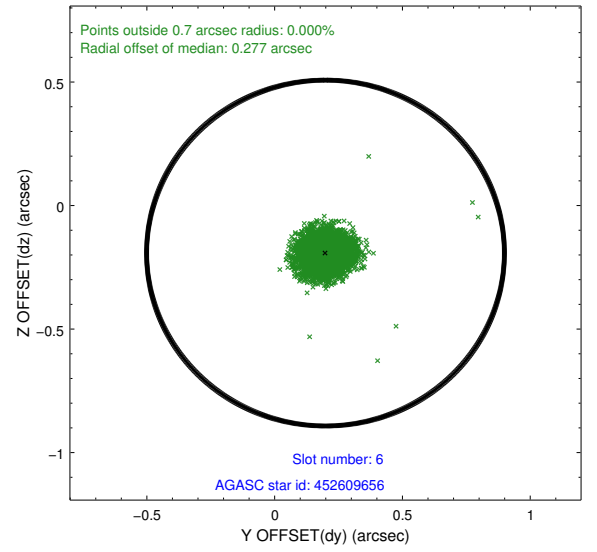
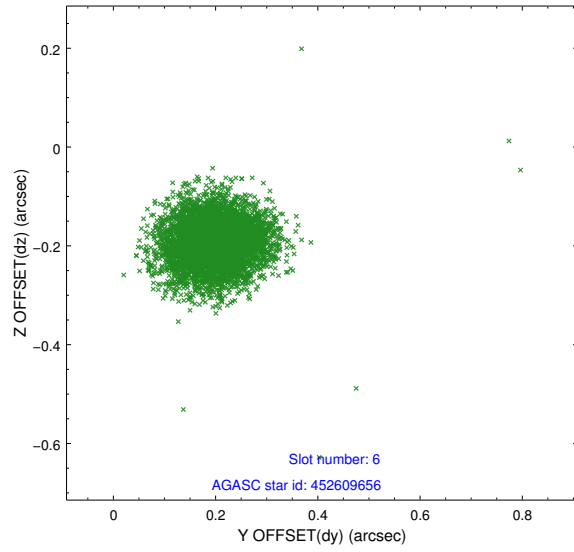
2.4.2 Slot 4



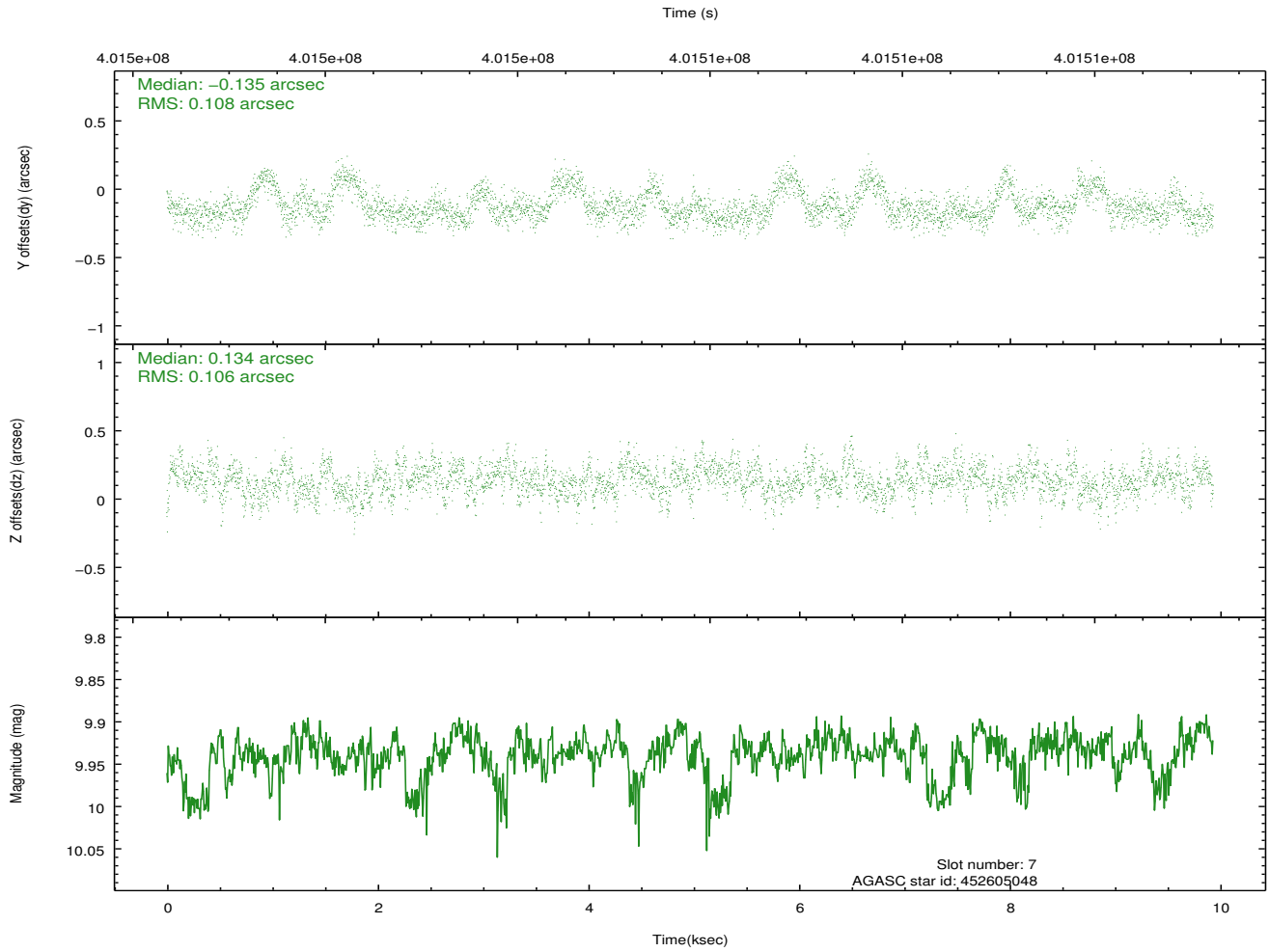
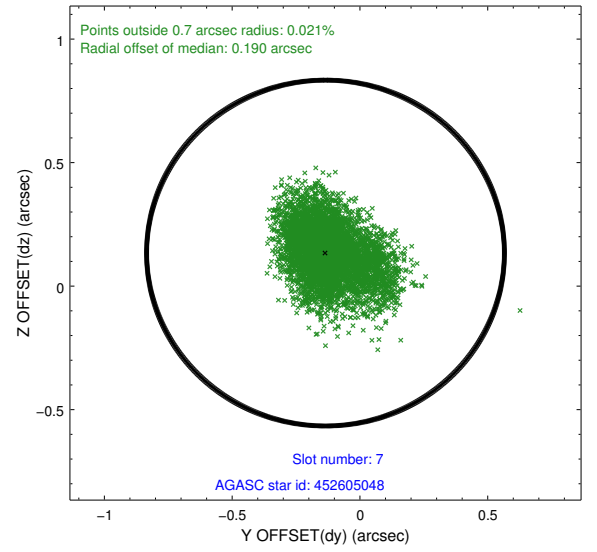
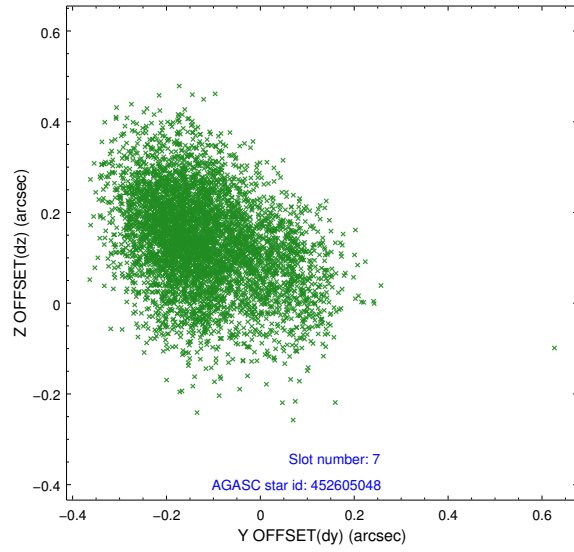
2.4.3 Slot 5



2.4.4 Slot 6

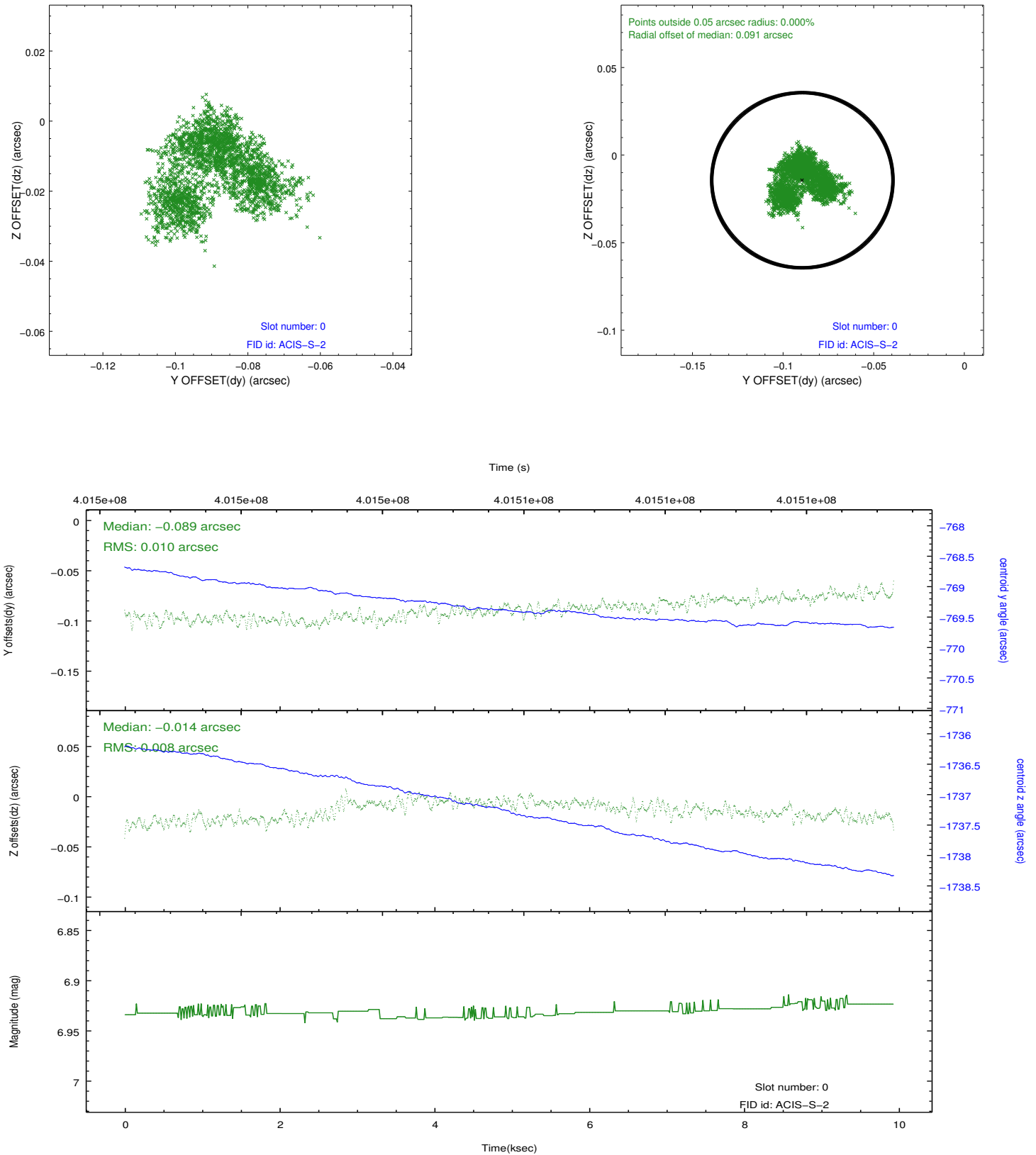


2.4.5 Slot 7

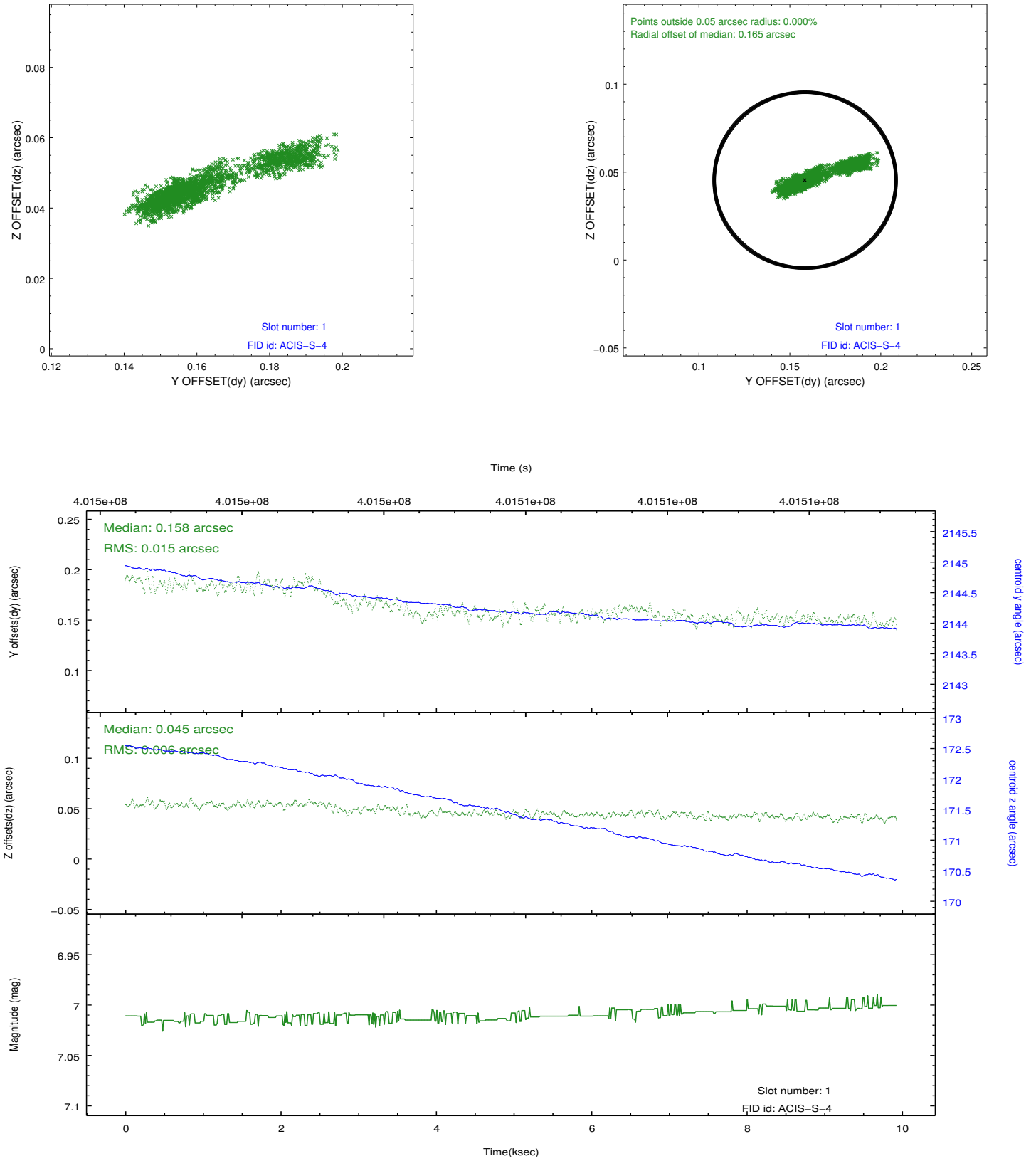


2.5 FID Slots

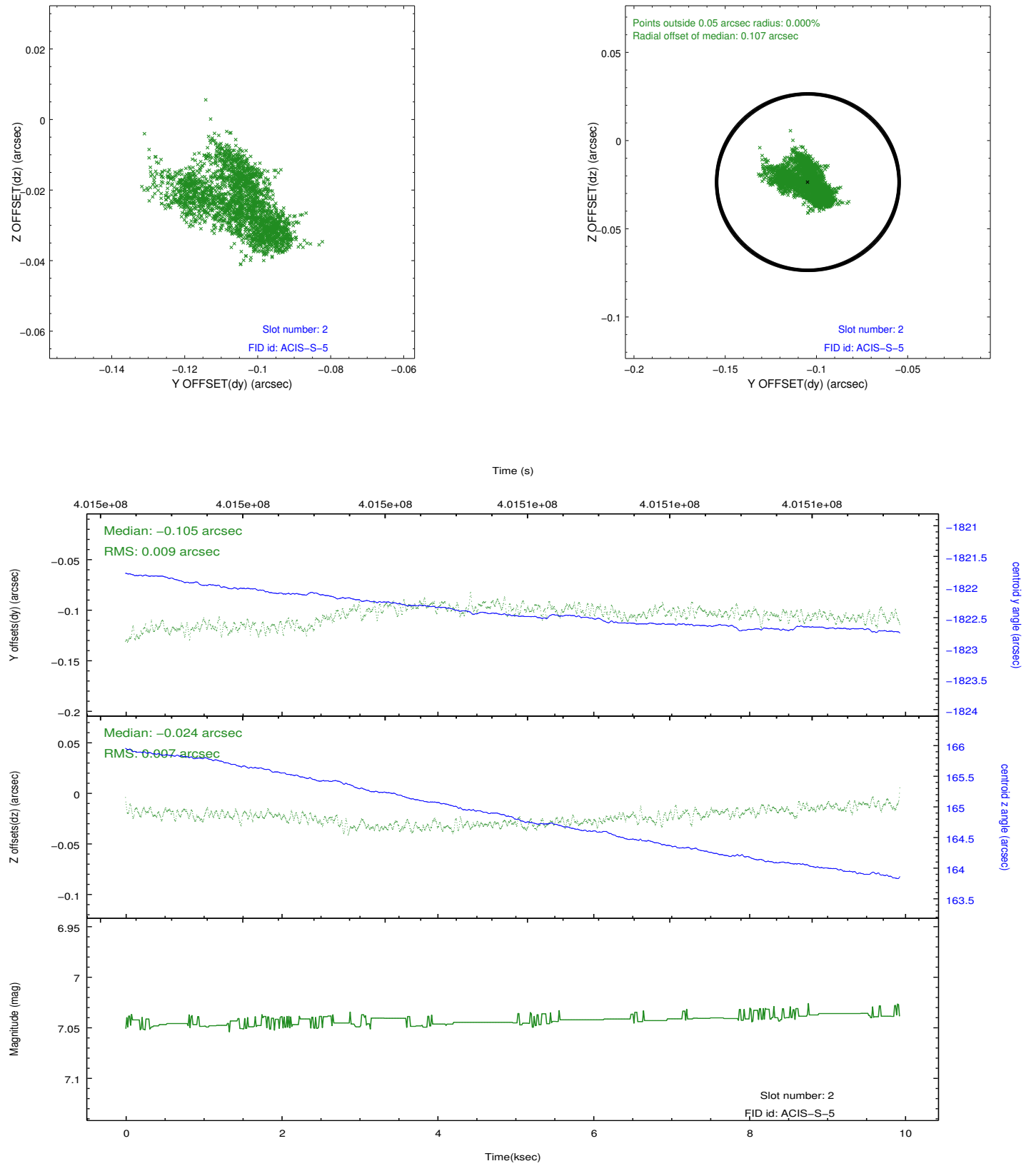
2.5.1 Slot 0



2.5.2 Slot 1



2.5.3 Slot 2



A Summary

A.1 Status

V&V Scientist	Jen Lauer
V&V Date (YYYY-MM-DD)	2012.07.12
V&V Edition	1
V&V Disposition and Status	OK
V&V Charge Time	9.849599963367

A.2 Comments