

V&V Reference Report

L2 ASCDS Version : 8.4.4

Observation 8974 - L2 Version 2
Chandra X-Ray Center

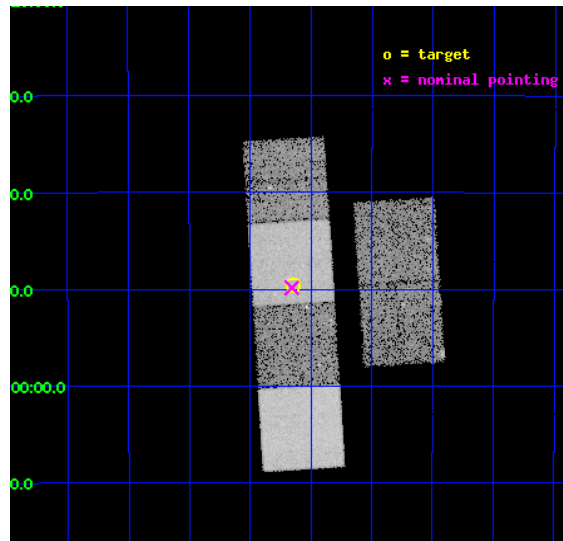
L2 Processing Date : May 25 2012

Contents

1	Front	2
2	OBI	3
2.1	OBI	3
2.1.1	Images	3
2.1.2	Bias	3
2.1.3	Parameters	4
2.1.4	Events	4
2.2	Compared Parameters	5
2.3	Aspect	6
2.4	Star Slots	9
2.4.1	Slot 3	9
2.4.2	Slot 4	10
2.4.3	Slot 5	11
2.4.4	Slot 6	12
2.4.5	Slot 7	13
2.5	FID Slots	14
2.5.1	Slot 0	14
2.5.2	Slot 1	15
2.5.3	Slot 2	16
A	Summary	17
A.1	Status	17
A.2	Comments	17

1 Front

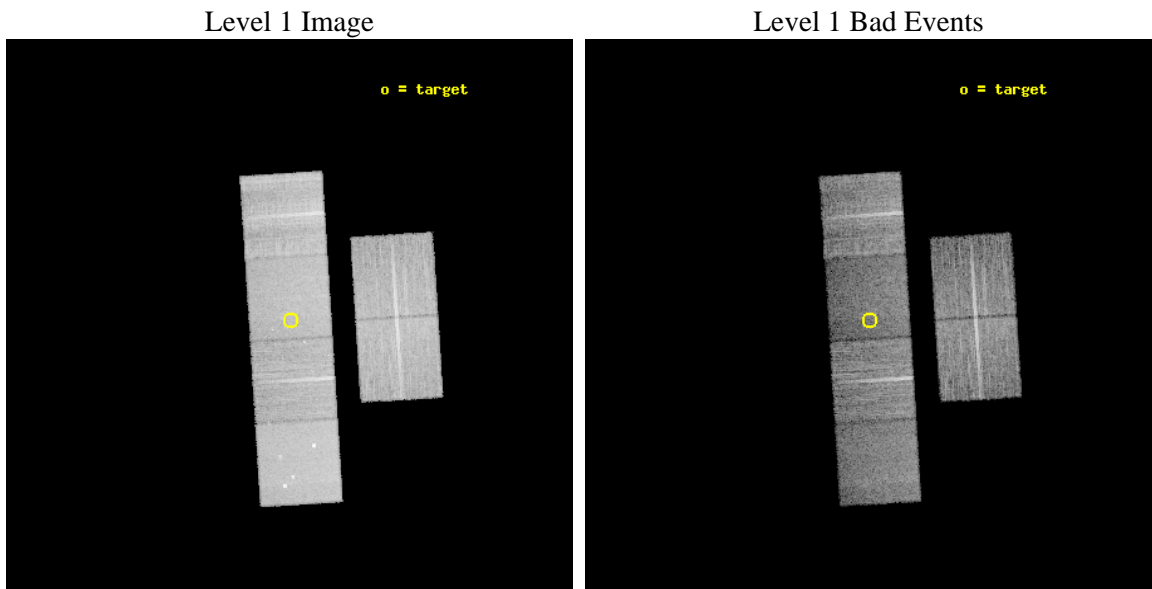
seq_num	300230	Sequence number
obs_id	8974	Observation id
title	A Chandra Legacy Survey of Dynamically Active Globular Clusters	Pr
observer	Prof. David Pooley	Principal investigator
object	NGC 6569	Source name
dtcycle	0	
cycle	P	events from which exps? Prim/Second/Both
ra_targ	273.411667	Observer's specified target RA [deg]
dec_targ	-31.826944	Observer's specified target Dec [deg]
ra_nom	273.41435379299	Nominal RA [deg]
dec_nom	-31.83118497302	Nominal Dec [deg]
roll_nom	266.38560804358	Nominal Roll [deg]
revision	2	Processing version of data
ontime	11244.799958169	Sum of GTIs [s]
livetime	11102.411530293	Livetime [s]
ontime2	11241.558967948	Sum of GTIs [s]
ontime3	11244.799958169	Sum of GTIs [s]
ontime5	11244.799958169	Sum of GTIs [s]
ontime6	11244.799958169	Sum of GTIs [s]
ontime7	11244.799958169	Sum of GTIs [s]
ontime8	11244.799958169	Sum of GTIs [s]
l2events	146274	Number of level 2 events



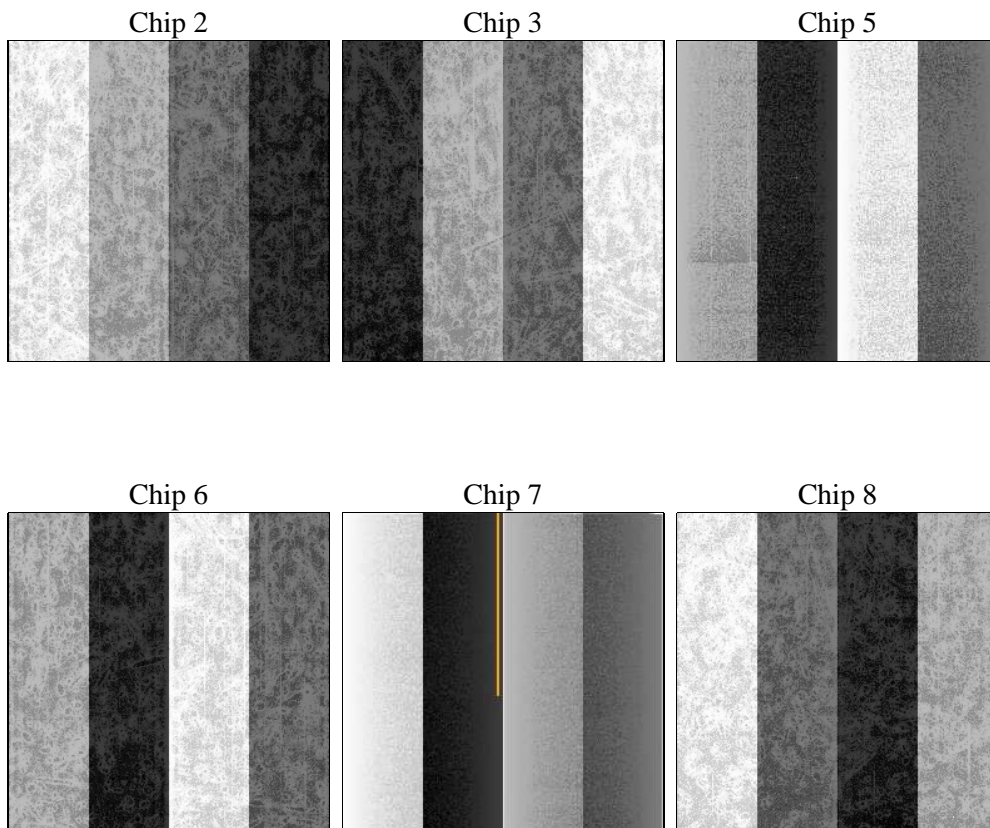
2 OBI

2.1 OBI

2.1.1 Images



2.1.2 Bias



2.1.3 Parameters

obi_num	0	Obi number	sched_exp_time	11201.058000	[s] Scheduled observation exposure time
ascdsver	8.4.4	Processing system revision	ontime	11244.799958169	Sum of GTIs [s]
caldsver	4.4.9	 	ontime2	11241.558967948	Sum of GTIs [s]
date	2012-05-25T04:28:55	Date and time of file creation	ontime3	11244.799958169	Sum of GTIs [s]
revision	2	Processing version of data	ontime5	11244.799958169	Sum of GTIs [s]
			ontime6	11244.799958169	Sum of GTIs [s]
			ontime7	11244.799958169	Sum of GTIs [s]
			ontime8	11244.799958169	Sum of GTIs [s]
			l1events	641437	Number of level 1 events

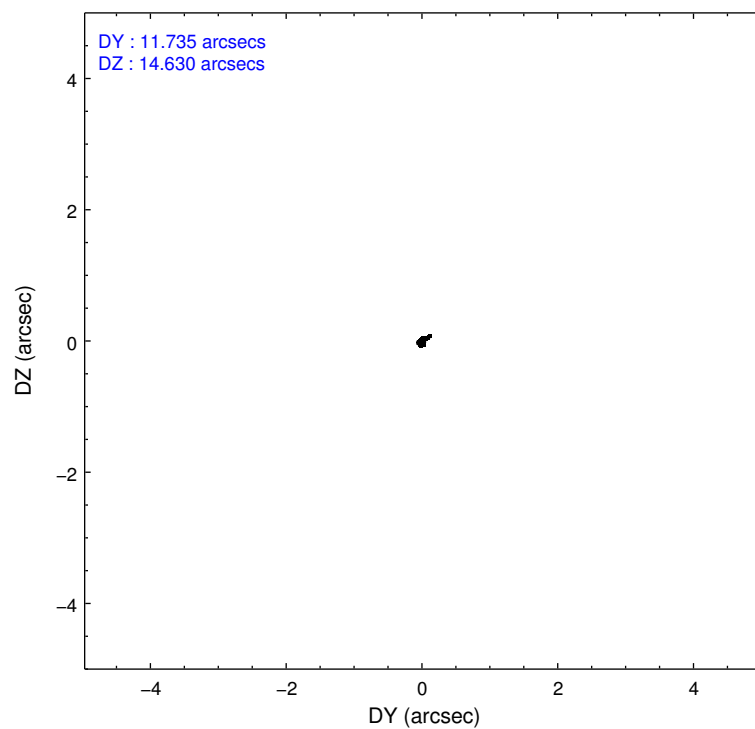
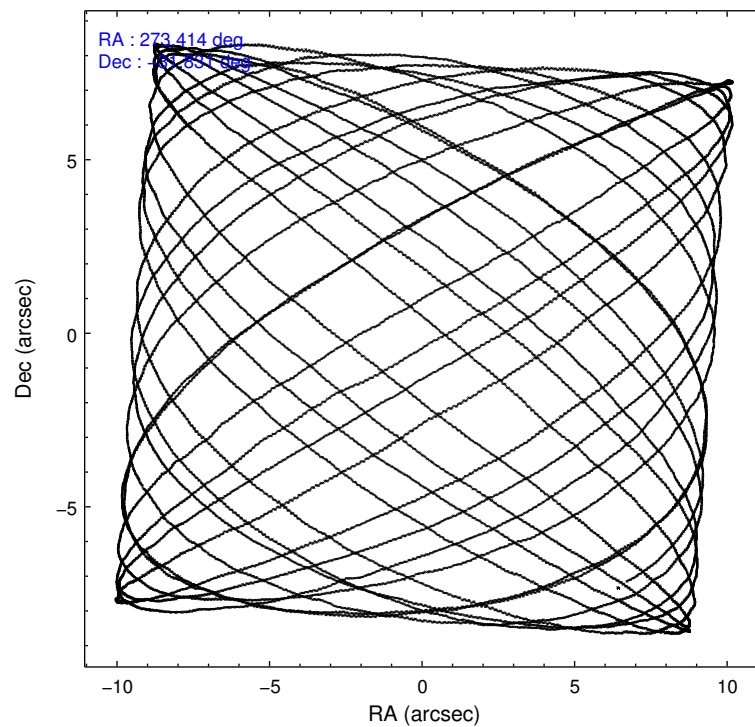
2.1.4 Events

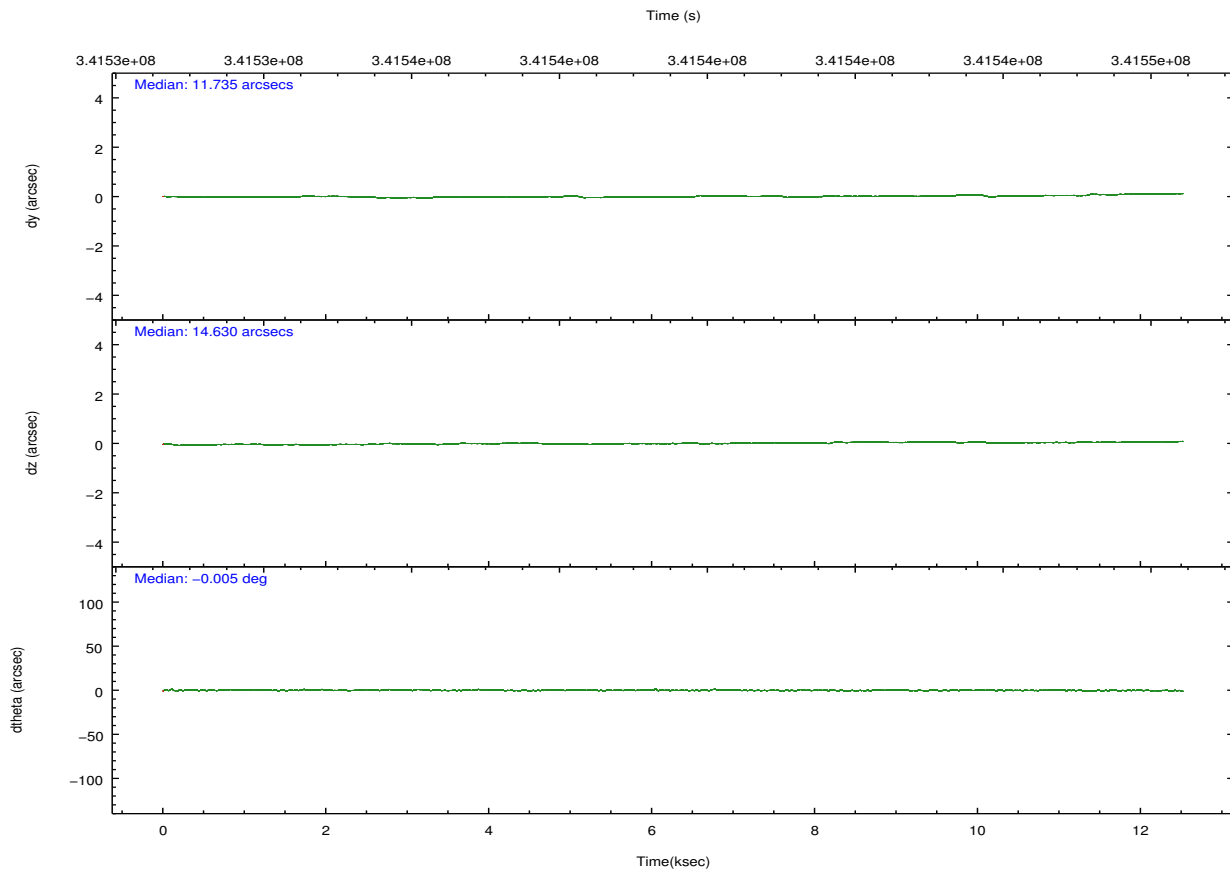
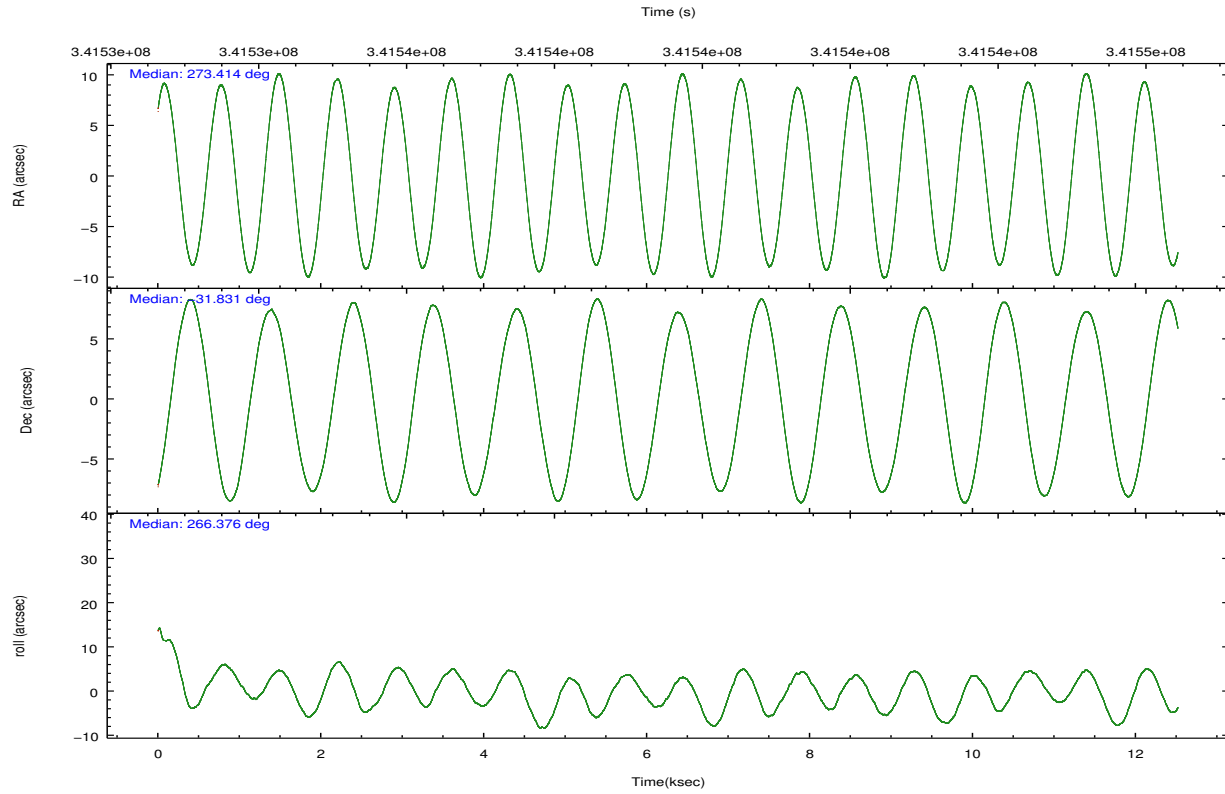
	ccd 2	ccd 3	ccd 5	ccd 6	ccd 7	ccd 8		ccd 2	ccd 3	ccd 5	ccd 6	ccd 7	ccd 8
level 1 events	101584	88937	132617	92575	106610	119114	grade 0 events	4055	3507	7911	4270	4841	9656
rejected events	91316	79687	65703	81810	57233	88957		3%	3%	5%	4%	4%	8%
rejected %	89%	89%	49%	88%	53%	74%	grade 1 events	72	54	309	48	141	116
								0%	0%	0%	0%	0%	0%
							grade 2 events	2484	2047	19663	2237	10143	6754
								2%	2%	14%	2%	9%	5%
							grade 3 events	989	951	2745	1079	4546	3173
								0%	1%	2%	1%	4%	2%
							grade 4 events	985	959	2760	1092	4503	2996
								0%	1%	2%	1%	4%	2%
							grade 5 events	3189	3711	10157	3793	11424	5722
								3%	4%	7%	4%	10%	4%
							grade 6 events	1759	1788	33849	2092	25358	7585
								1%	2%	25%	2%	23%	6%
							grade 7 events	88051	75920	55223	77964	45654	83112
								86%	85%	41%	84%	42%	69%

2.2 Compared Parameters

Parameter	Planned	Actual	Parameter	Planned	Actual
Instrument	ACIS	ACIS	Obspar format version number	7	7
Detector	ACIS-235678	ACIS-235678	Obspar file type	PREDICTED	ACTUAL
Grating	NONE	NONE	Obspar update status	NONE	UPDATED
Data mode	VFAINT	VFAINT	CCD I0 on	N	N
Observation mode	POINTING	POINTING	CCD I1 on	N	N
[deg] Pointing RA	273.399661	273.4143537929884	CCD I2 on	O1	Y
[deg] Pointing Dec	-31.806898	-31.83118497301964	CCD I3 on	O2	Y
[deg] Pointing Roll	266.221243	266.3856080435783	CCD S0 on	N	N
[mm] SIM focus pos	-0.684267	-0.6828225247311905	CCD S1 on	Y	Y
[mm] SIM defocus	0	0.001444936568705701	CCD S2 on	Y	Y
[mm] SIM translation stage pos	-190.132523	-190.1425803651734	CCD S3 on	Y	Y
[mm] SIM translation stage offset	0	0.01005778216563158	CCD S4 on	Y	Y
[s] Observation start time (MET)	341534602.184000	341533032.64502	CCD S5 on	N	N
Observation start date	2008-10-27T22:42:17	2008-10-27T22:17:12	Number of optional ACIS chips dropped	0	0
[s] Observation end time (MET)	341545803.184000	341546030.67066	On-chip summing requested	N	N
Observation end date	2008-10-28T01:48:58	2008-10-28T01:53:50	Subarray requested	NONE	NONE
Read mode	TIMED	TIMED	Alternating exposures requested	N	N
			[s] Primary exposure time	0.000000	3.2

2.3 Aspect



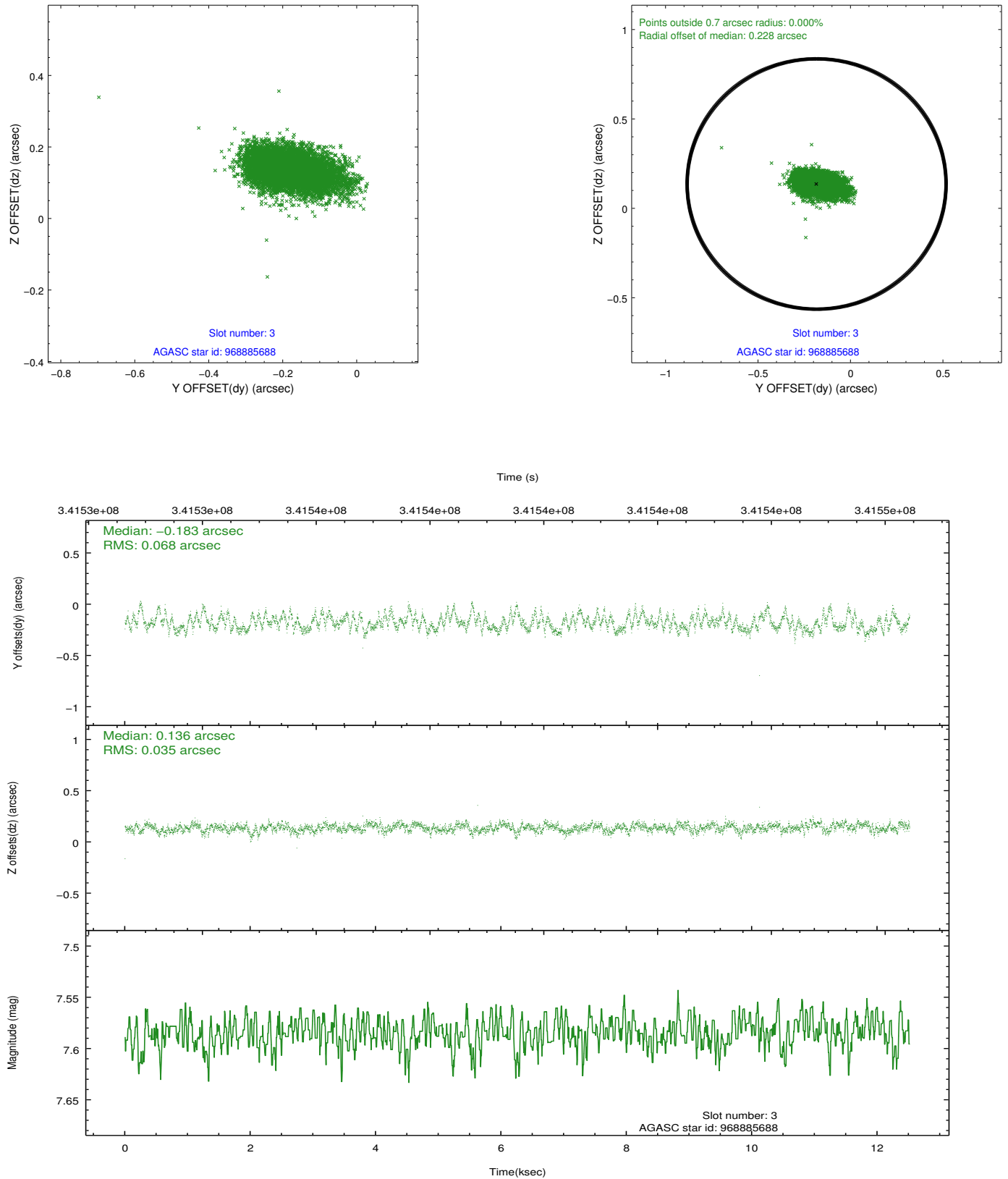


Slot Statistics

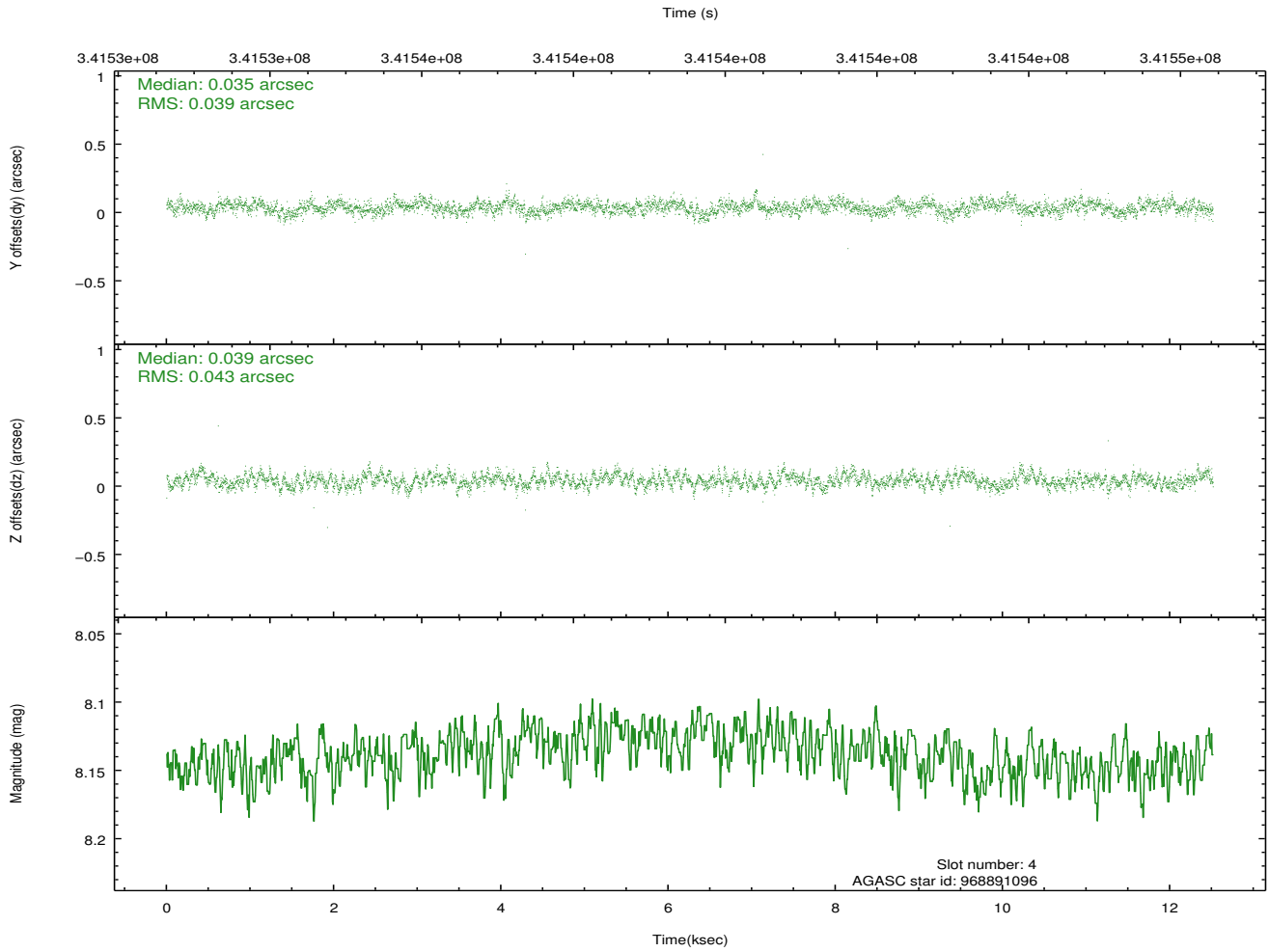
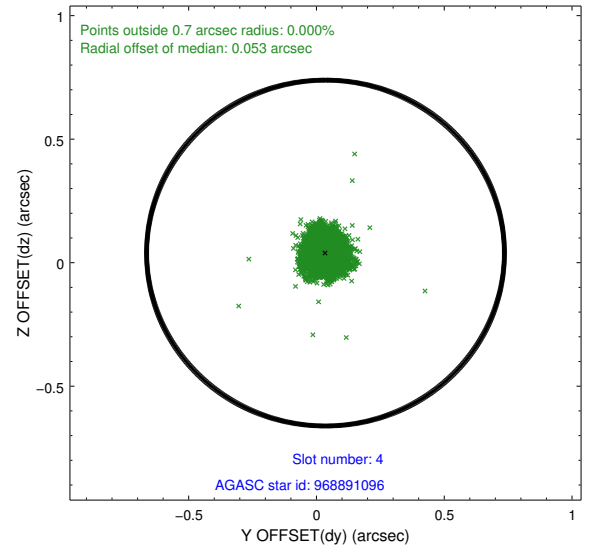
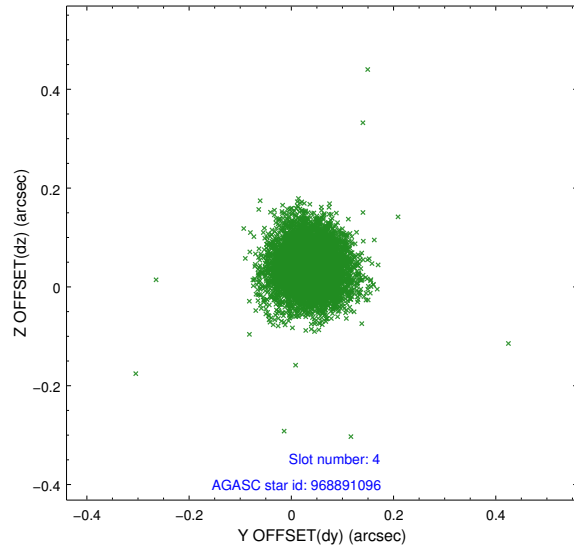
slot	status	id	mag	n_pts	med_dy	med_dz	dr1	dr2	ra	dec	mean_y	mean_z
0	FID	ACIS-S-2	6.88	3054	-0.043	-0.029	0.010	0.015	0.000000	0.000000	-764.65	-1735.99
1	FID	ACIS-S-4	6.97	3054	0.134	0.028	0.007	0.012	0.000000	0.000000	2148.61	172.17
2	FID	ACIS-S-5	7.00	3054	-0.123	0.009	0.008	0.013	0.000000	0.000000	-1817.09	166.23
3	GUIDE	968885688	7.58	6107	-0.183	0.136	0.079	0.137	274.079647	-31.321288	-1875.61	1972.22
4	GUIDE	968891096	8.14	6105	0.035	0.039	0.061	0.099	273.839663	-31.739627	-327.66	1328.96
5	GUIDE	969410512	7.78	6106	-0.068	-0.052	0.055	0.087	273.701392	-32.213017	1399.91	1013.91
6	GUIDE	969411232	7.92	6107	-0.052	0.071	0.055	0.091	273.256998	-32.065996	960.45	-372.34
7	GUIDE	969415768	9.13	6096	0.271	-0.193	0.126	0.199	272.909685	-32.404195	2248.30	-1343.96

2.4 Star Slots

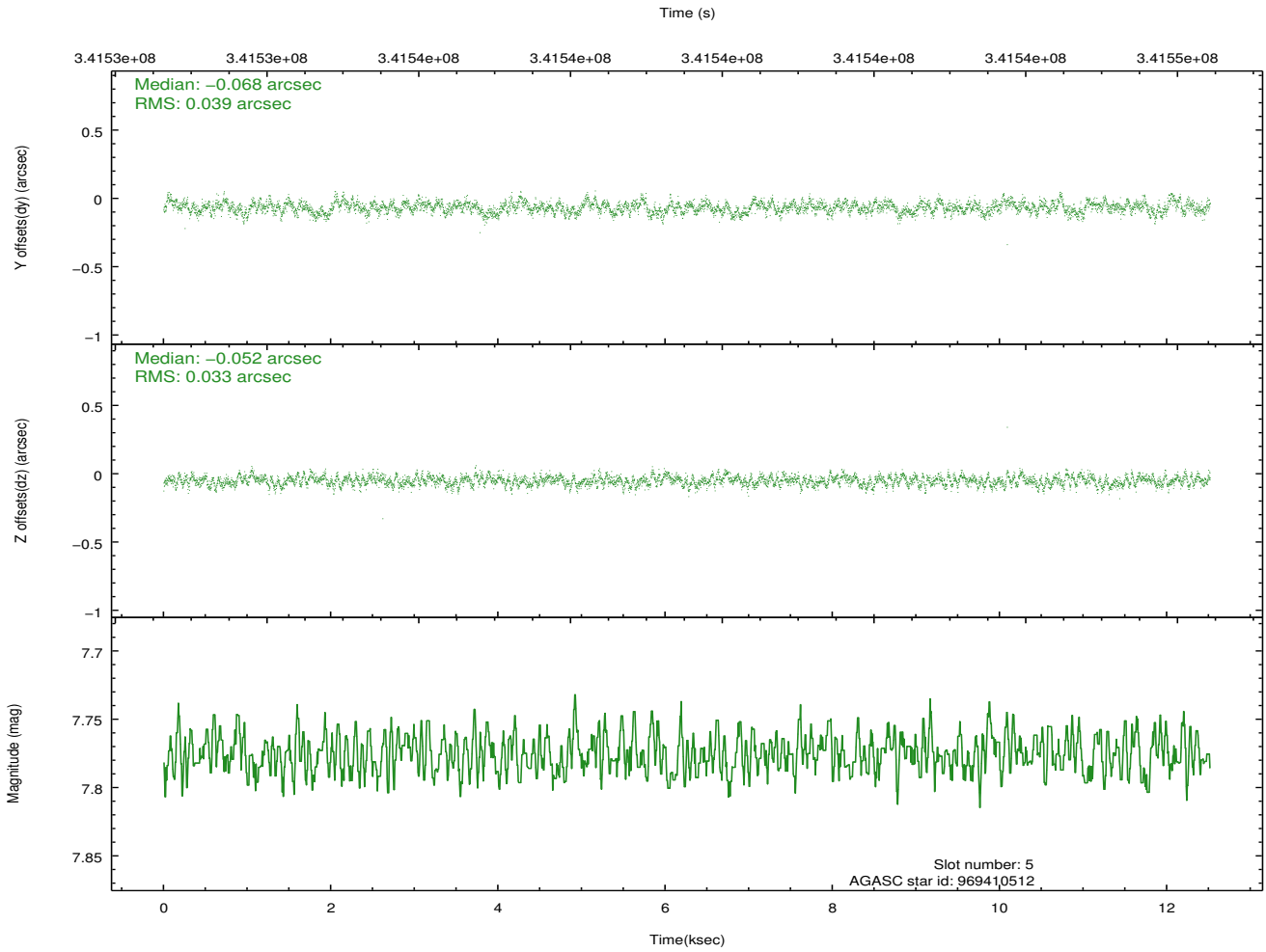
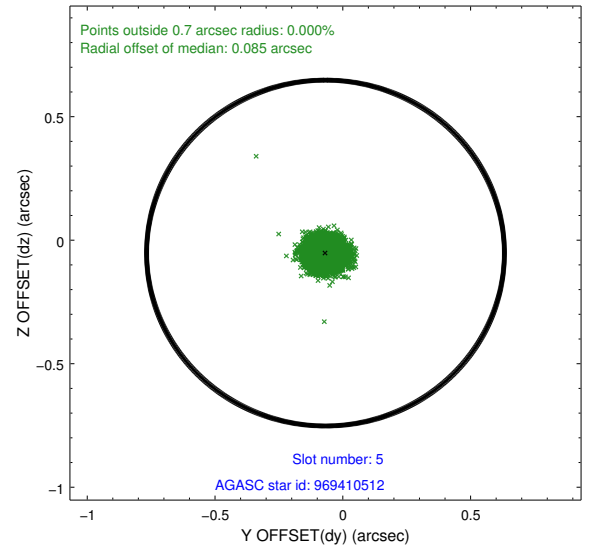
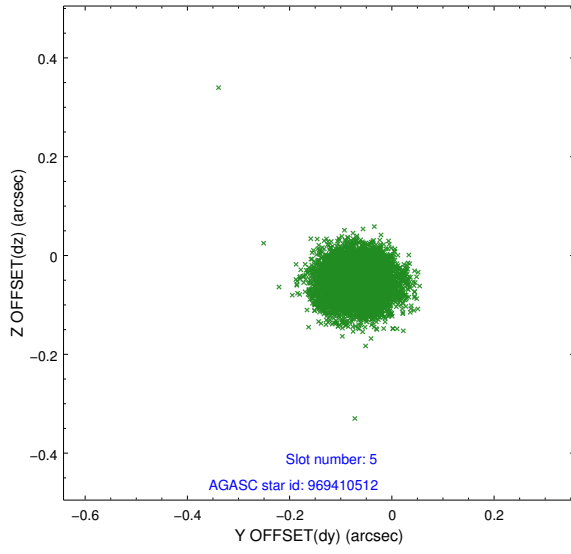
2.4.1 Slot 3



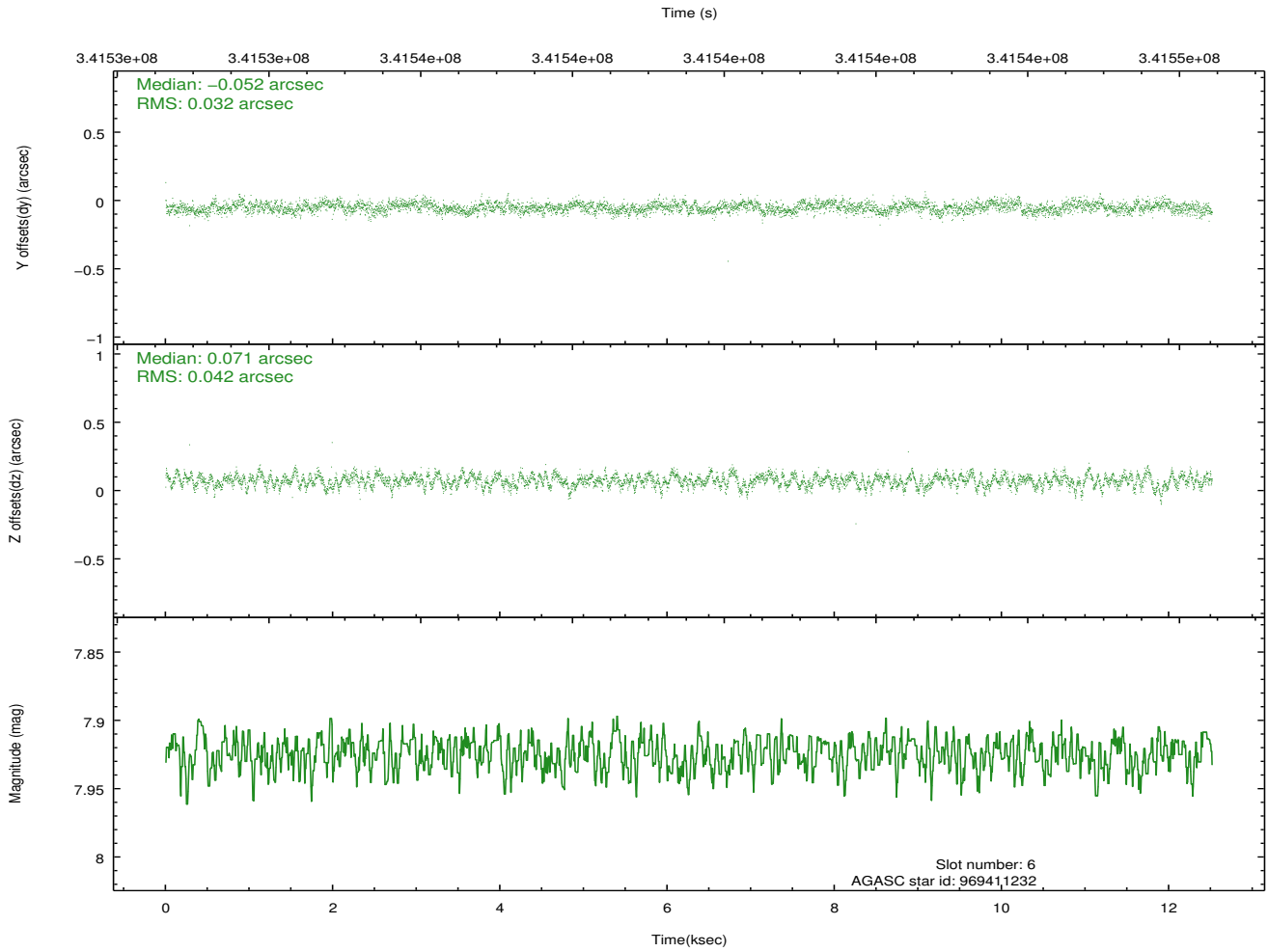
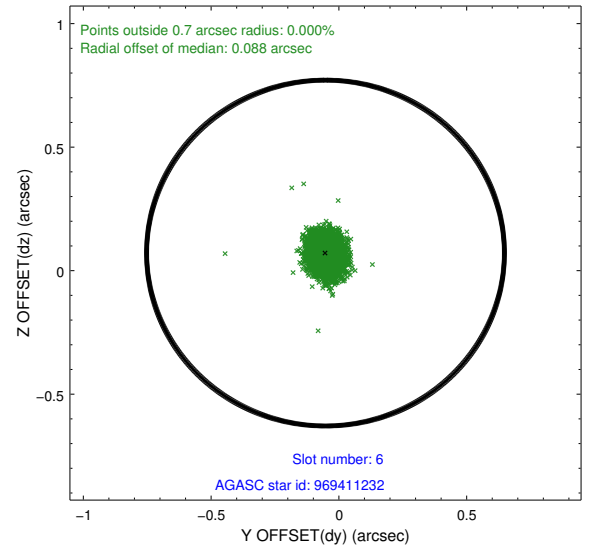
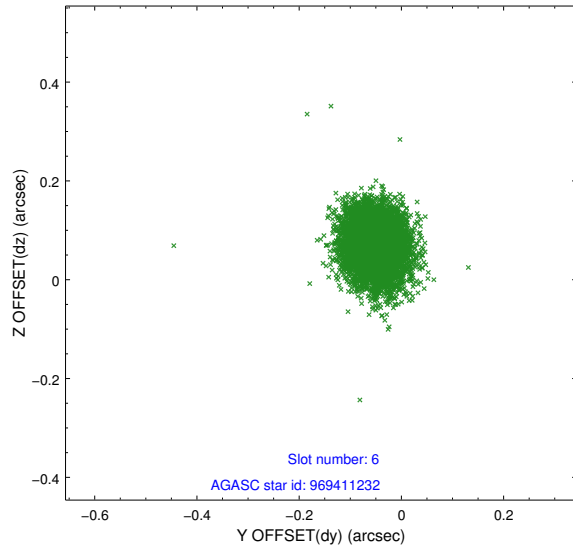
2.4.2 Slot 4



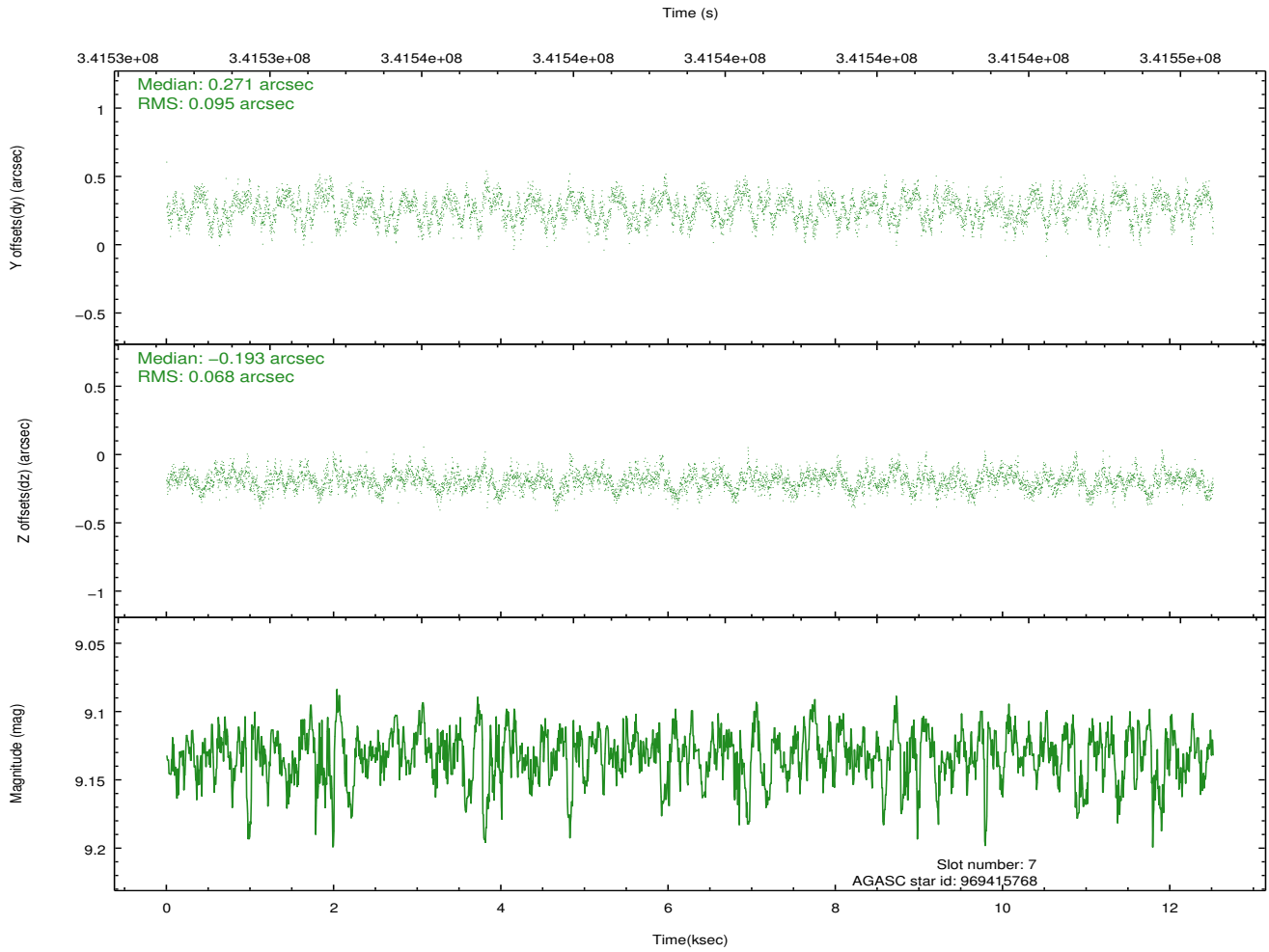
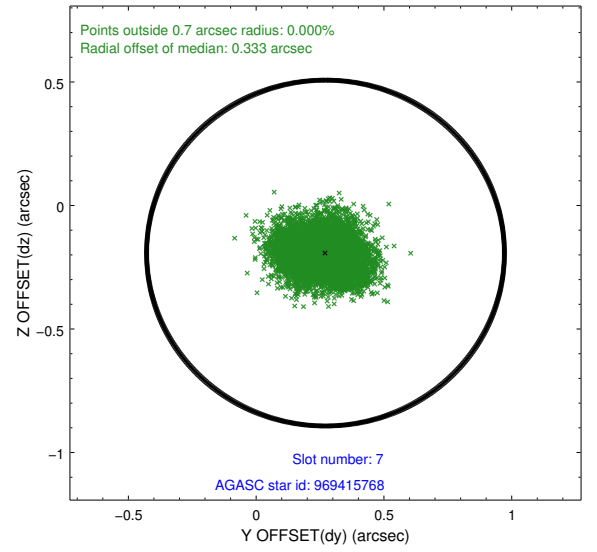
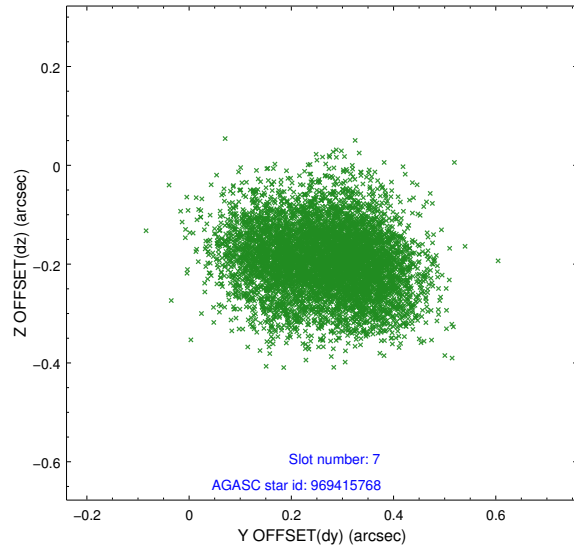
2.4.3 Slot 5



2.4.4 Slot 6

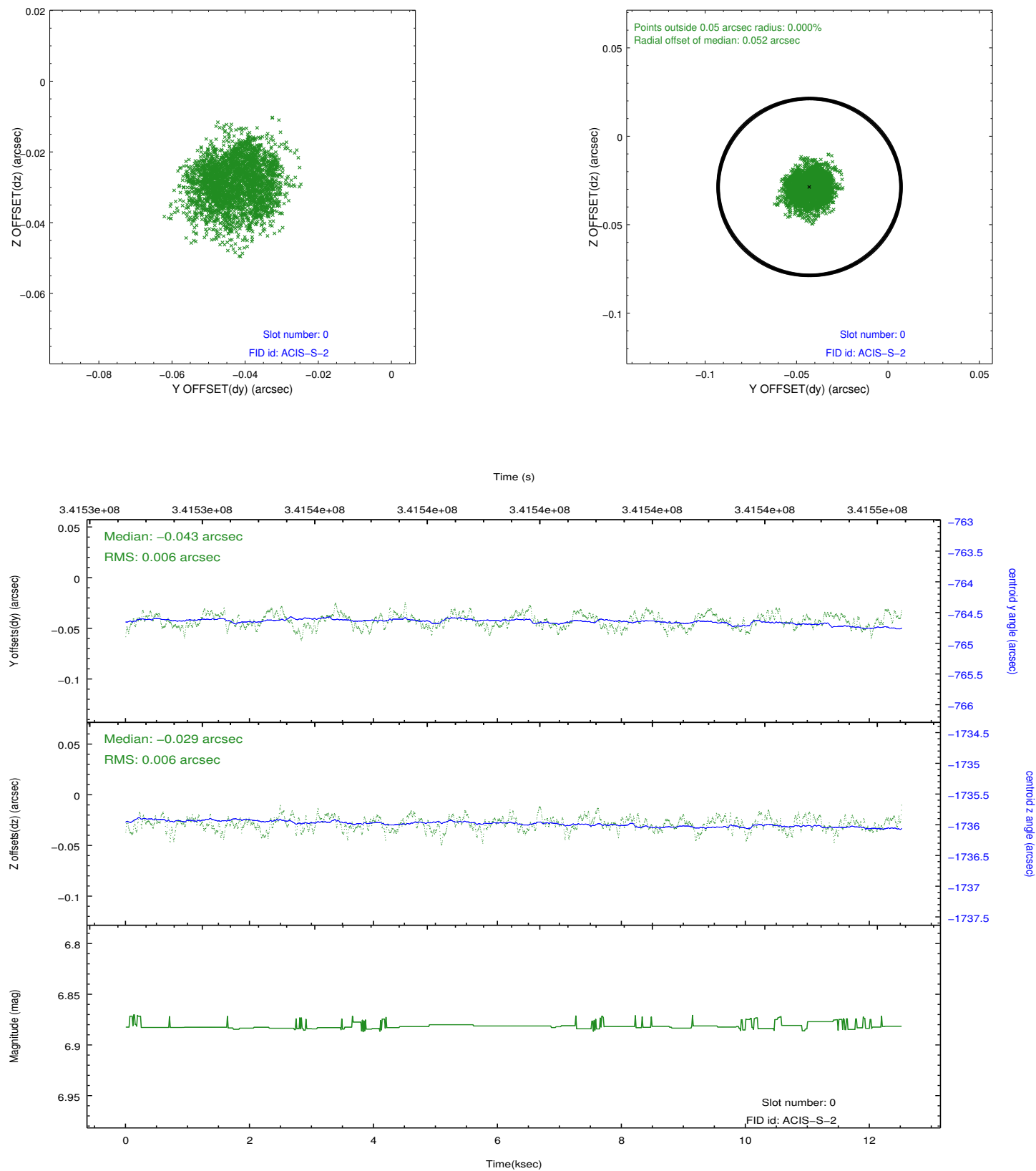


2.4.5 Slot 7

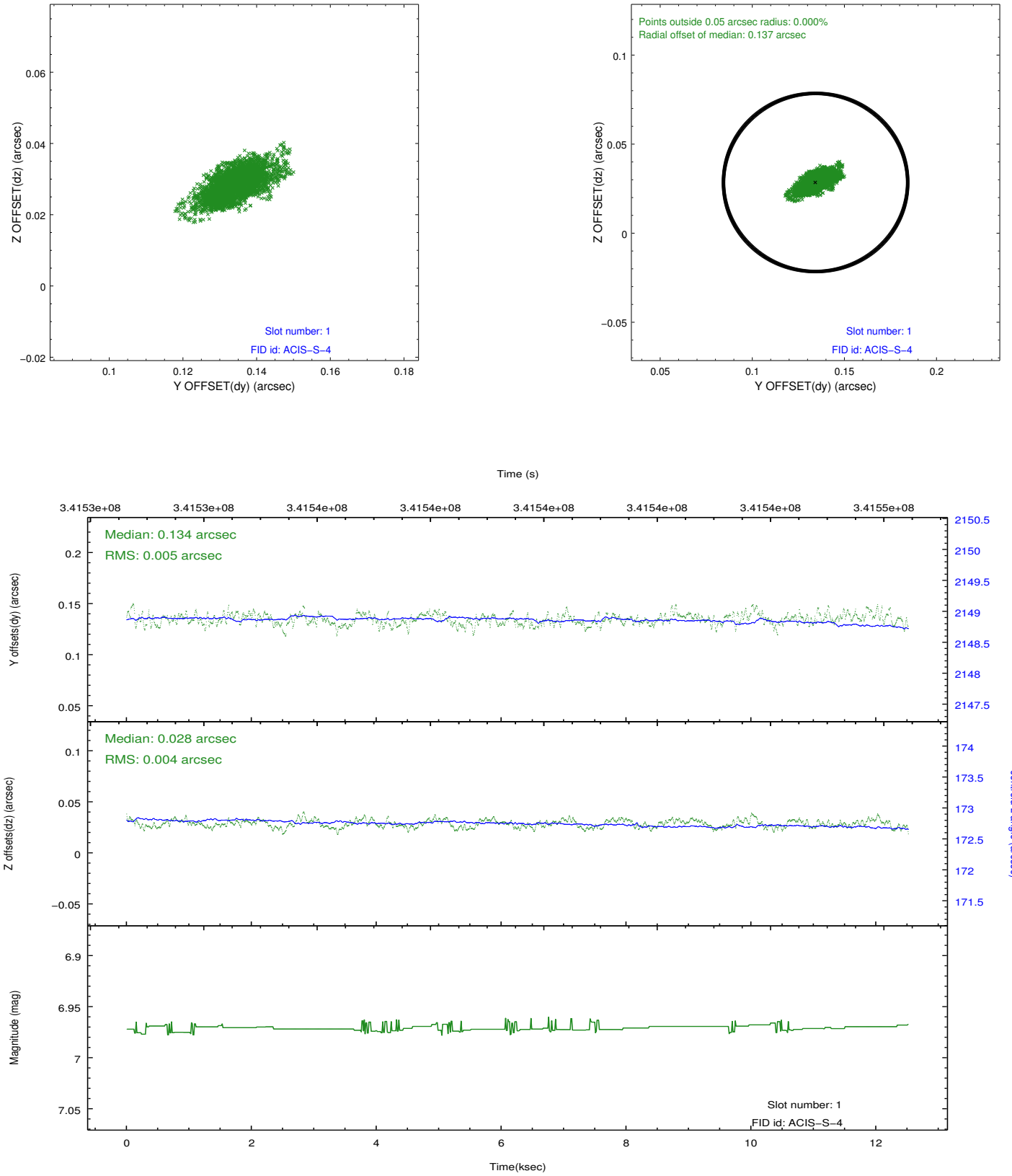


2.5 FID Slots

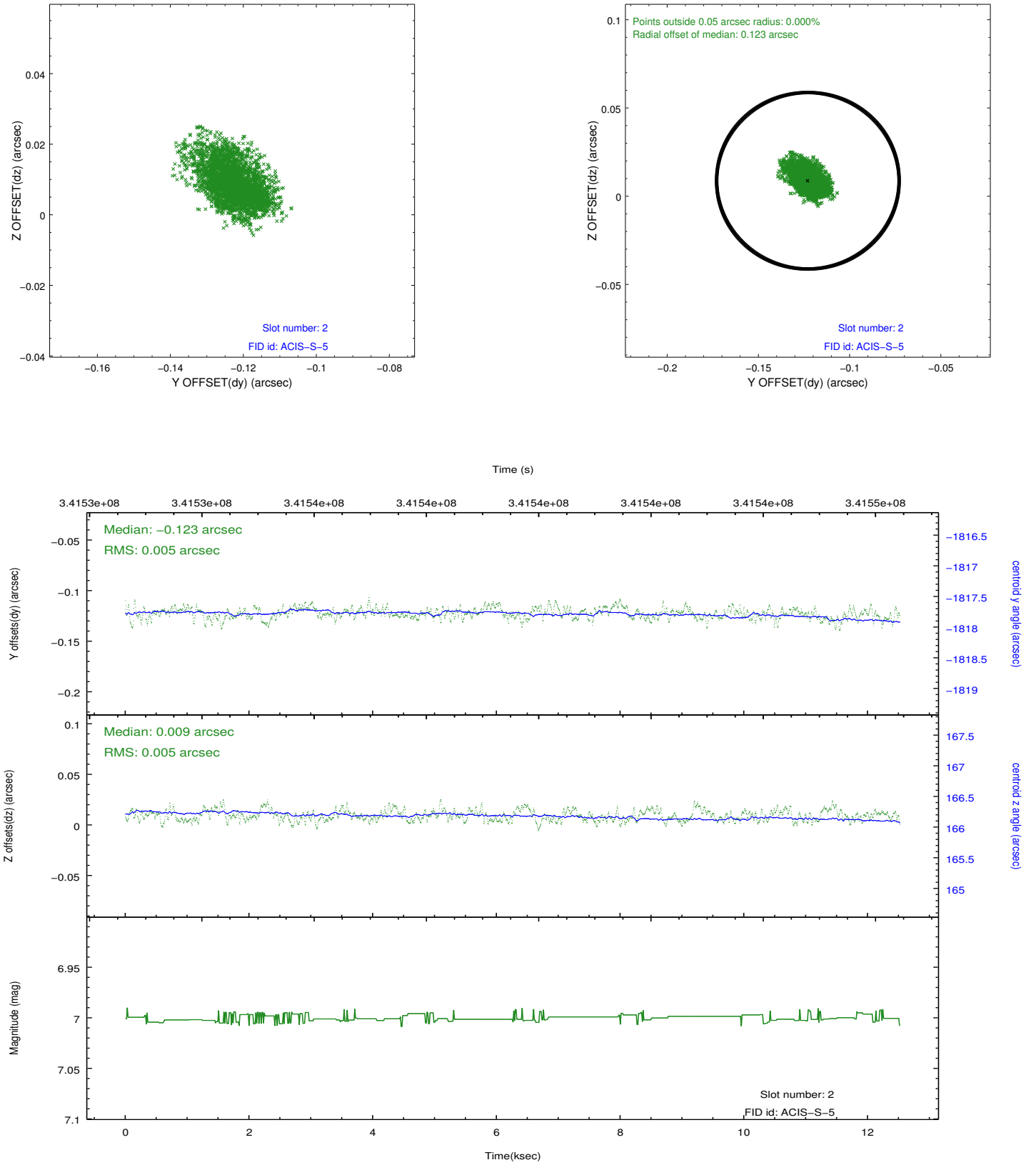
2.5.1 Slot 0



2.5.2 Slot 1



2.5.3 Slot 2



A Summary

A.1 Status

V&V Scientist	Joy Nichols
V&V Date (YYYY-MM-DD)	2012.06.01
V&V Edition	1
V&V Disposition and Status	OK
V&V Charge Time	11.2447999

A.2 Comments