

V&V Reference Report

L2 ASCDS Version : 8.4.4

Observation 8954 - L2 Version 2
Chandra X-Ray Center

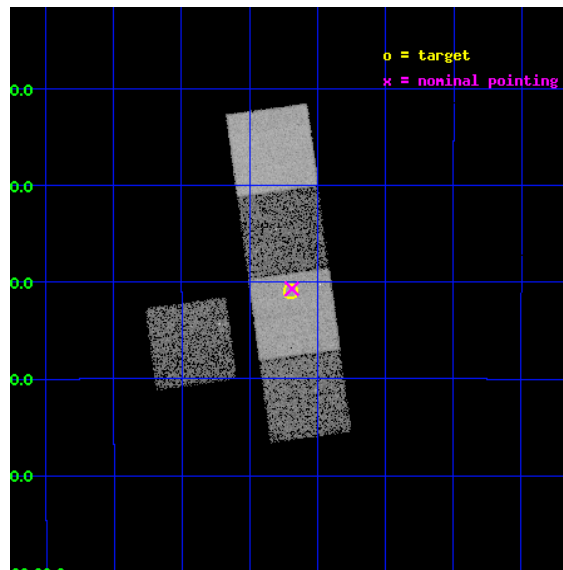
L2 Processing Date : May 30 2012

Contents

1	Front	2
2	OBI	3
2.1	OBI	3
2.1.1	Images	3
2.1.2	Bias	3
2.1.3	Parameters	4
2.1.4	Events	4
2.2	Compared Parameters	5
2.3	Aspect	6
2.4	Star Slots	9
2.4.1	Slot 3	9
2.4.2	Slot 4	10
2.4.3	Slot 5	11
2.4.4	Slot 6	12
2.4.5	Slot 7	13
2.5	FID Slots	14
2.5.1	Slot 0	14
2.5.2	Slot 1	15
2.5.3	Slot 2	16
A	Summary	17
A.1	Status	17
A.2	Comments	17

1 Front

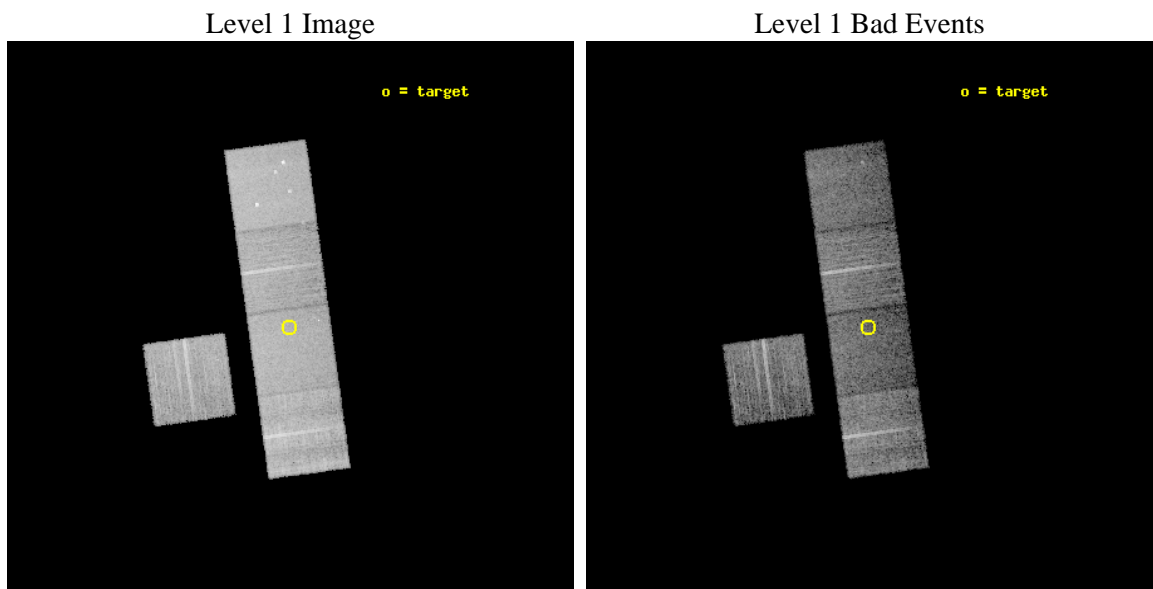
seq_num	300210	Sequence number
obs_id	8954	Observation id
title	A Chandra Legacy Survey of Dynamically Active Globular Clusters	Pr
observer	Prof. David Pooley	Principal investigator
object	NGC 6333	Source name
dtcycle	0	
cycle	P	events from which exps? Prim/Second/Both
ra_targ	259.799167	Observer's specified target RA [deg]
dec_targ	-18.516389	Observer's specified target Dec [deg]
ra_nom	259.79710809406	Nominal RA [deg]
dec_nom	-18.511881425574	Nominal Dec [deg]
roll_nom	82.171634028907	Nominal Roll [deg]
revision	2	Processing version of data
ontime	8518.8000655174	Sum of GTIs [s]
livetime	8407.4956712121	Livetime [s]
ontime3	8518.8000655174	Sum of GTIs [s]
ontime5	8518.8000655174	Sum of GTIs [s]
ontime6	8518.8000655174	Sum of GTIs [s]
ontime7	8518.8000655174	Sum of GTIs [s]
ontime8	8515.6591051817	Sum of GTIs [s]
l2events	106084	Number of level 2 events



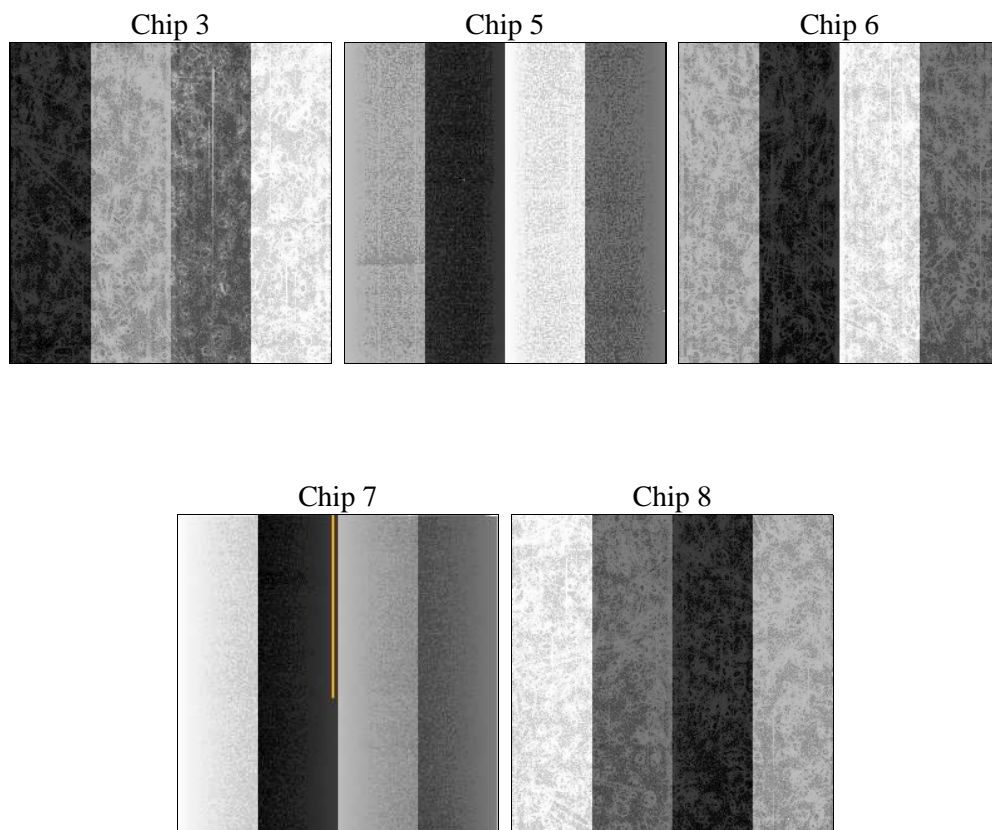
2 OBI

2.1 OBI

2.1.1 Images



2.1.2 Bias



2.1.3 Parameters

obi_num	1	Obi number	sched_exp_time	8400.000000	[s] Scheduled observation exposure time
ascdsver	8.4.4	Processing system revision	ontime	8518.8000655174	Sum of GTIs [s]
caldsver	4.4.9	 	ontime3	8518.8000655174	Sum of GTIs [s]
date	2012-05-30T06:13:08	Date and time of file creation	ontime5	8518.8000655174	Sum of GTIs [s]
revision	2	Processing version of data	ontime6	8518.8000655174	Sum of GTIs [s]
			ontime7	8518.8000655174	Sum of GTIs [s]
			ontime8	8515.6591051817	Sum of GTIs [s]
			l1events	453479	Number of level 1 events

2.1.4 Events

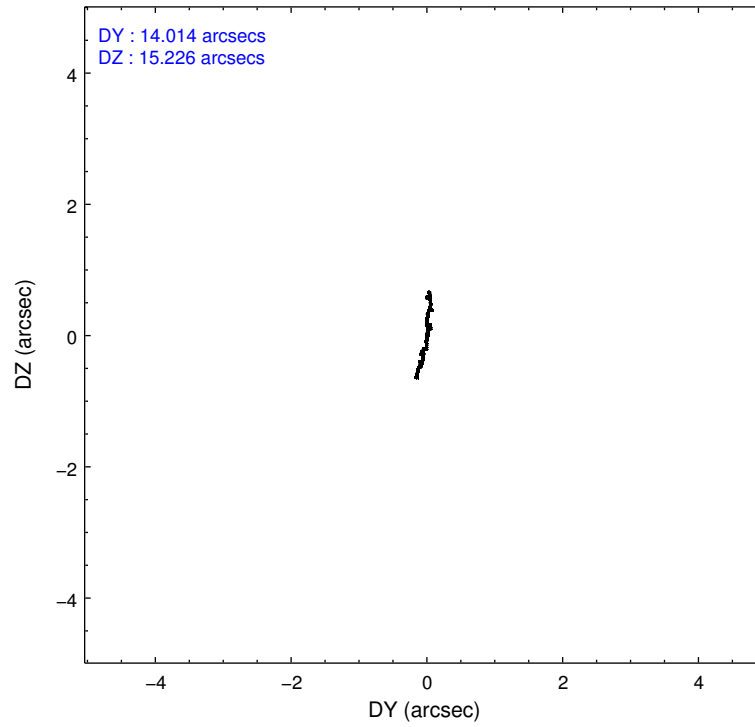
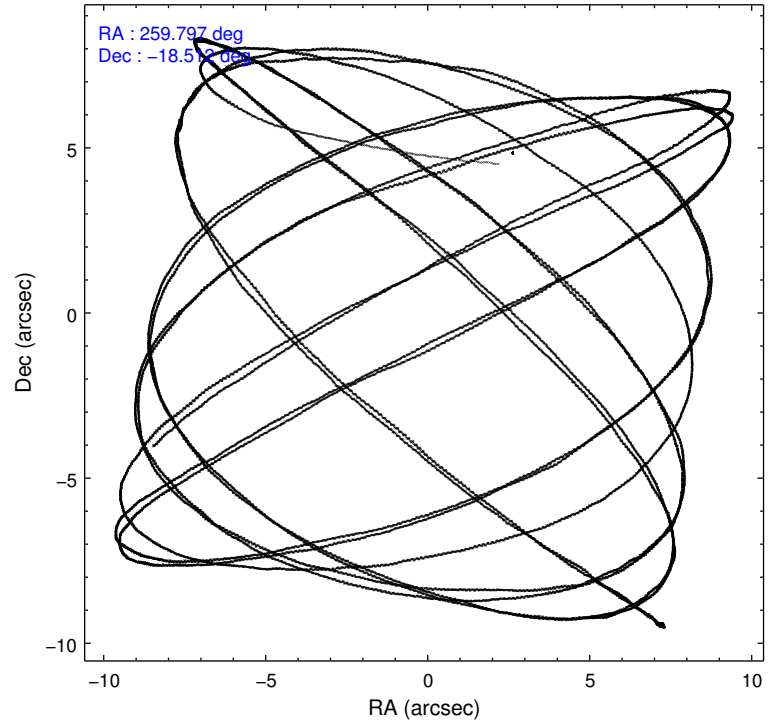
	ccd 3	ccd 5	ccd 6	ccd 7	ccd 8
level 1 events	75247	109697	78625	87784	102126
rejected events	67999	57669	70729	50054	78085
rejected %	90%	52%	89%	57%	76%

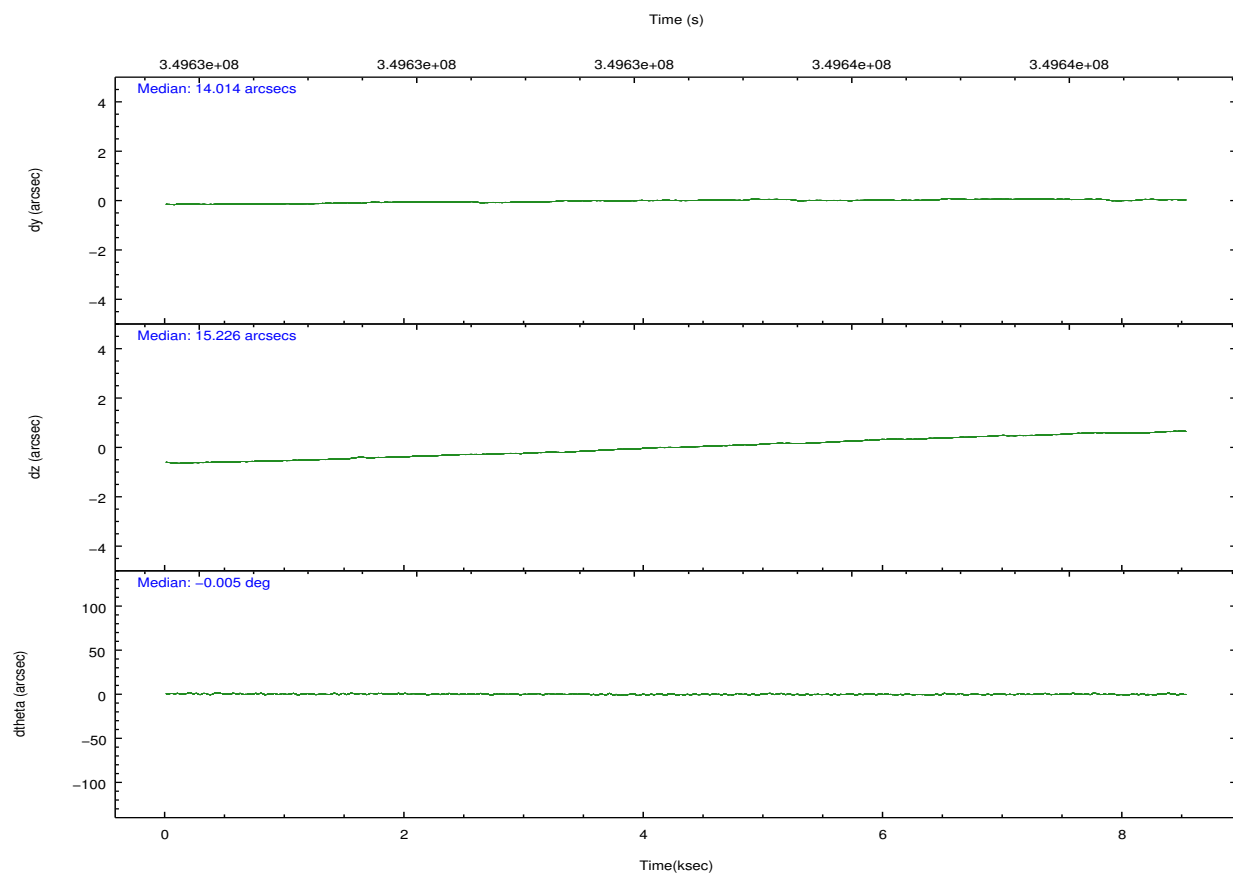
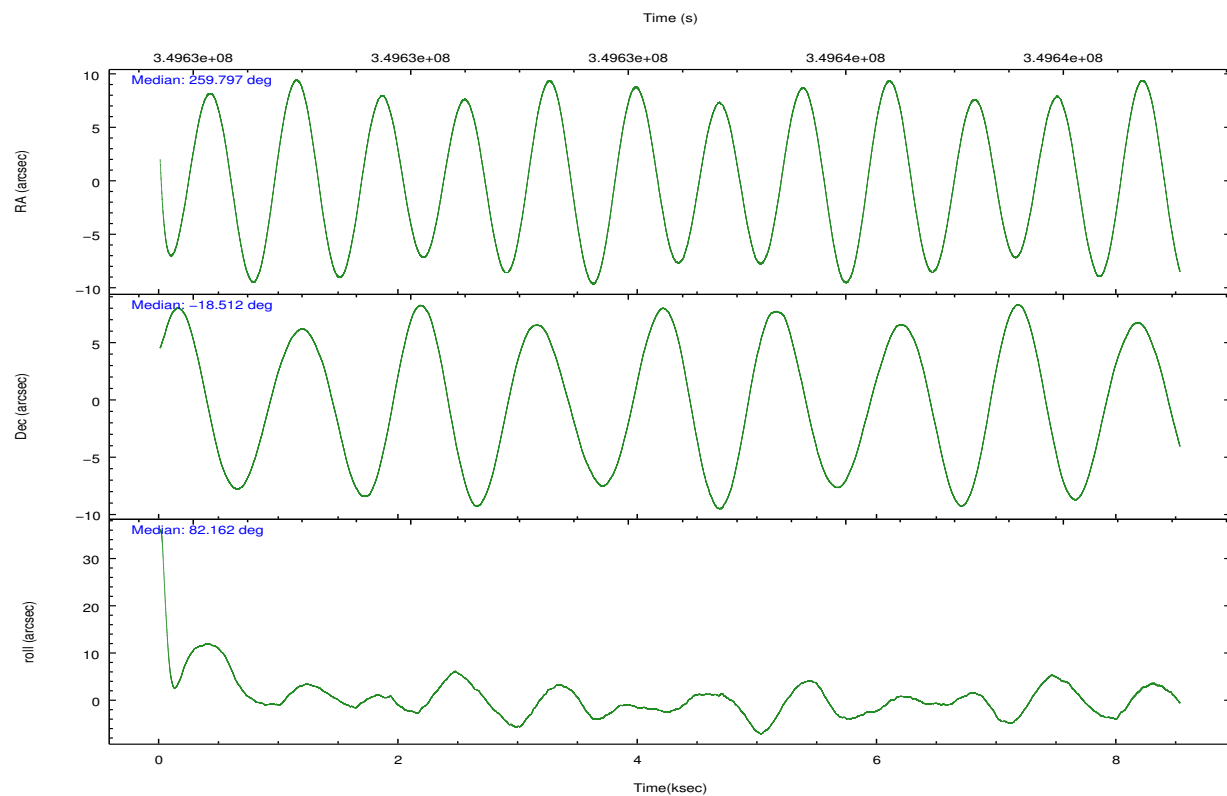
	ccd 3	ccd 5	ccd 6	ccd 7	ccd 8
grade 0 events	2970	7090	3156	4008	7561
	3%	6%	4%	4%	7%
grade 1 events	51	372	31	126	85
	0%	0%	0%	0%	0%
grade 2 events	1612	16269	1802	8367	5801
	2%	14%	2%	9%	5%
grade 3 events	862	2307	903	3730	2721
	1%	2%	1%	4%	2%
grade 4 events	827	2242	828	3692	2511
	1%	2%	1%	4%	2%
grade 5 events	3007	8386	3155	9039	4588
	3%	7%	4%	10%	4%
grade 6 events	1482	27941	1736	20754	6832
	1%	25%	2%	23%	6%
grade 7 events	64436	45090	67014	38068	72027
	85%	41%	85%	43%	70%

2.2 Compared Parameters

Parameter	Planned	Actual	Parameter	Planned	Actual
Instrument	ACIS	ACIS	Obspar format version number	7	7
Detector	ACIS-35678	ACIS-35678	Obspar file type	PREDICTED	ACTUAL
Grating	NONE	NONE	Obspar update status	NONE	UPDATED
Data mode	VFAINT	VFAINT	CCD I0 on	N	N
Observation mode	POINTING	POINTING	CCD I1 on	N	N
[deg] Pointing RA	259.808354	259.7971080940614	CCD I2 on	O1	N
[deg] Pointing Dec	-18.537132	-18.51188142557437	CCD I3 on	O2	Y
[deg] Pointing Roll	82.018538	82.17163402890654	CCD S0 on	N	N
[mm] SIM focus pos	-0.684267	-0.6828225247311905	CCD S1 on	Y	Y
[mm] SIM defocus	0	0.001444936568705701	CCD S2 on	Y	Y
[mm] SIM translation stage pos	-190.132523	-190.1400660498719	CCD S3 on	Y	Y
[mm] SIM translation stage offset	0	0.00754346686406393	CCD S4 on	Y	Y
[s] Observation start time (MET)	349630249.184000	349628972.99508	CCD S5 on	N	N
Observation start date	2009-01-29T15:29:43	2009-01-29T15:09:32	Number of optional ACIS chips dropped	1	1
[s] Observation end time (MET)	349638649.184000	349639299.35809	On-chip summing requested	N	N
Observation end date	2009-01-29T17:49:43	2009-01-29T18:01:39	Subarray requested	NONE	NONE
Read mode	TIMED	TIMED	Alternating exposures requested	N	N
			[s] Primary exposure time	0.000000	3.1

2.3 Aspect



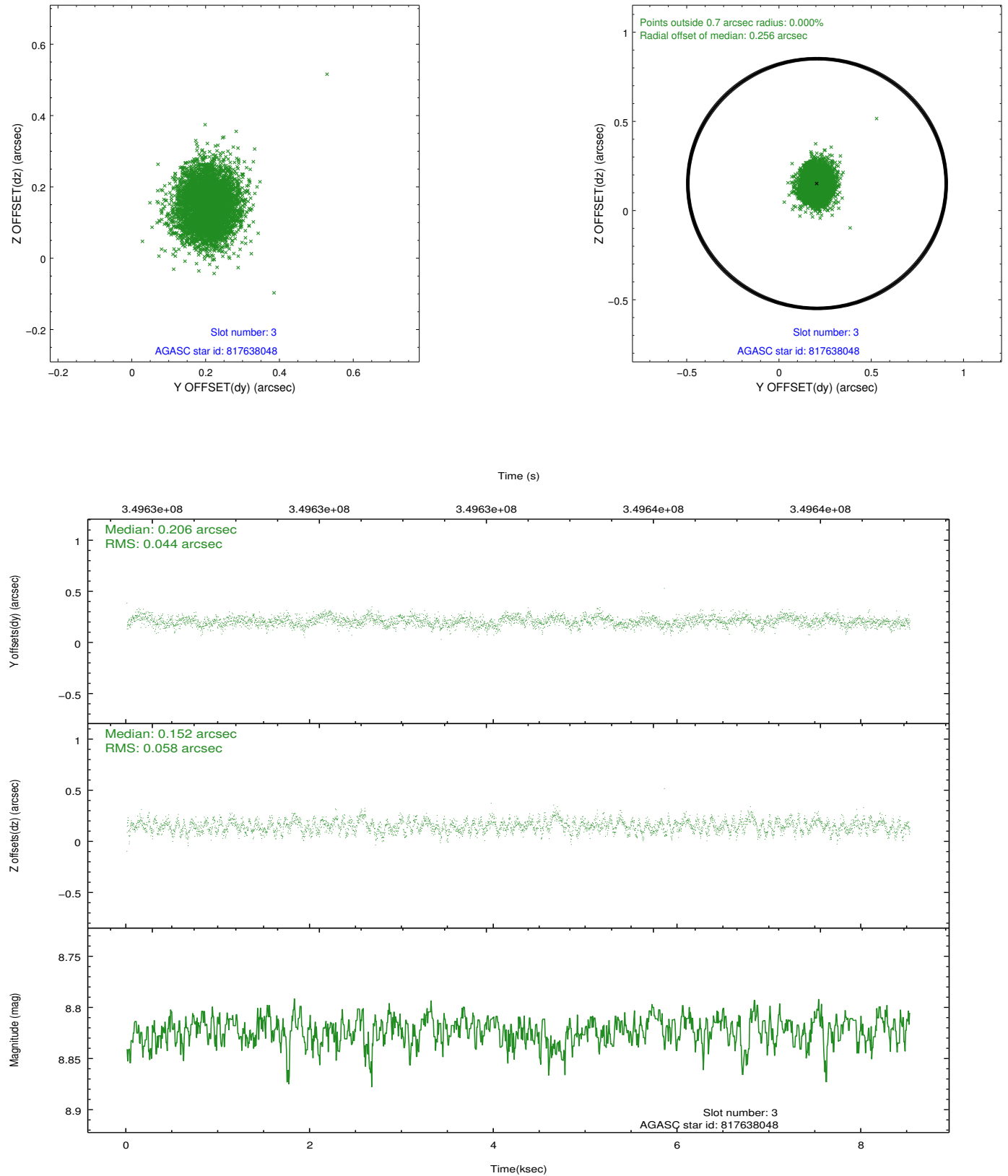


Slot Statistics

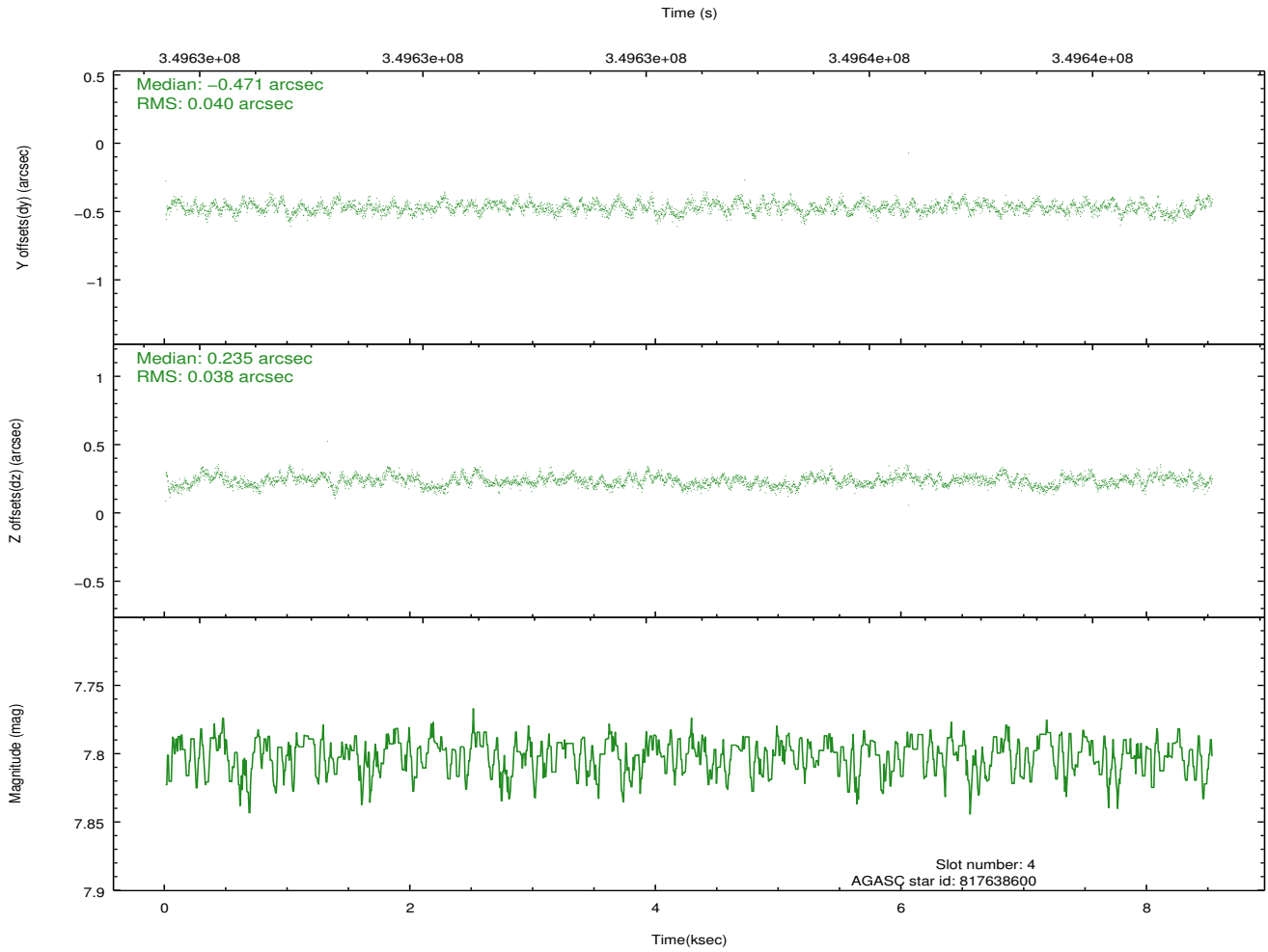
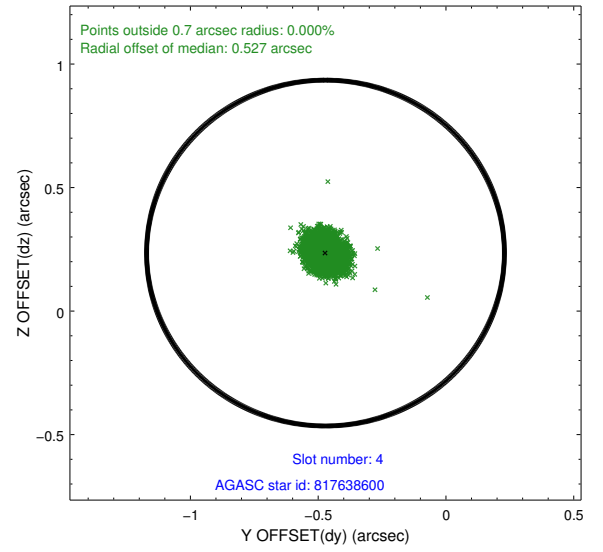
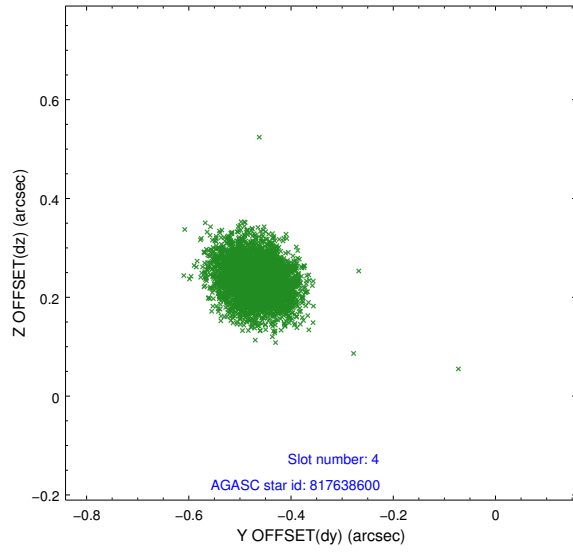
slot	status	id	mag	n_pts	med_dy	med_dz	dr1	dr2	ra	dec	mean_y	mean_z
0	FID	ACIS-S-2	6.91	2079	-0.010	-0.025	0.008	0.013	0.000000	0.000000	-766.93	-1736.64
1	FID	ACIS-S-5	7.02	2079	-0.111	-0.013	0.008	0.014	0.000000	0.000000	-1820.46	164.66
2	FID	ACIS-S-6	7.13	2079	0.095	0.045	0.007	0.013	0.000000	0.000000	394.06	809.37
3	GUIDE	817638048	8.82	4159	0.206	0.152	0.077	0.123	260.403238	-18.657756	-151.32	-2069.71
4	GUIDE	817638600	7.80	4158	-0.471	0.235	0.059	0.094	260.448651	-18.331806	1031.64	-2064.60
5	GUIDE	818157400	8.36	4157	0.219	0.098	0.067	0.106	260.004036	-19.010418	-1594.97	-896.71
6	GUIDE	817502624	9.14	4155	-0.010	-0.375	0.102	0.158	259.135212	-18.513990	-241.94	2286.09
7	GUIDE	818026616	8.80	4155	0.051	-0.110	0.087	0.140	259.354682	-19.116003	-2280.44	1239.02

2.4 Star Slots

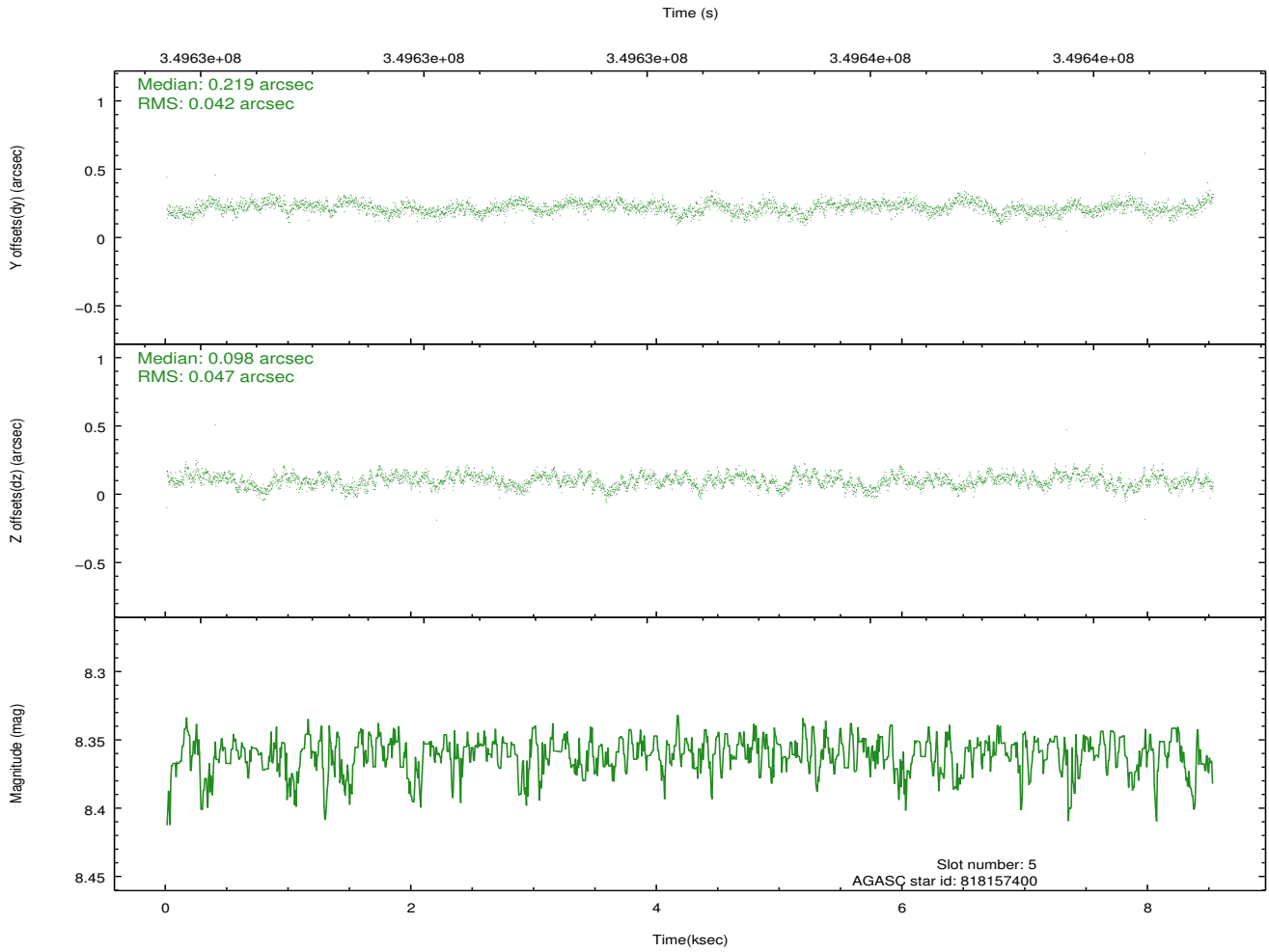
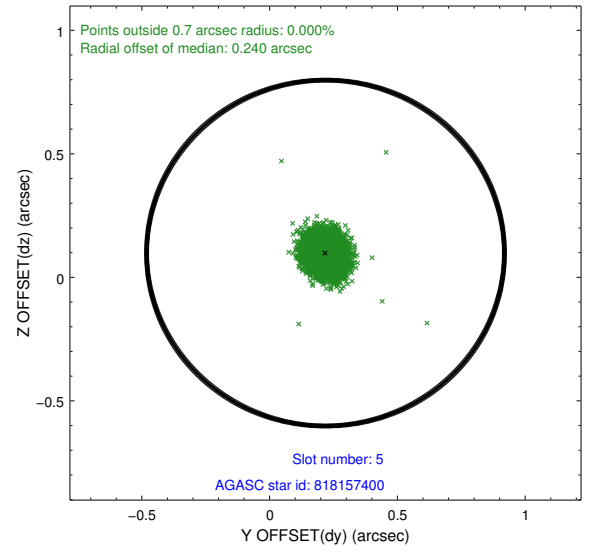
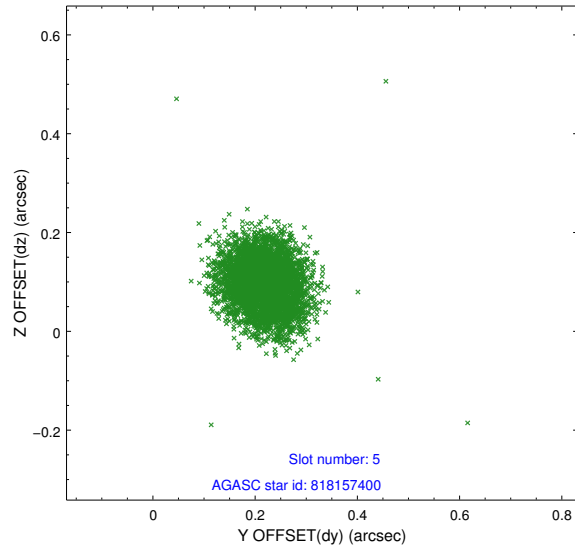
2.4.1 Slot 3



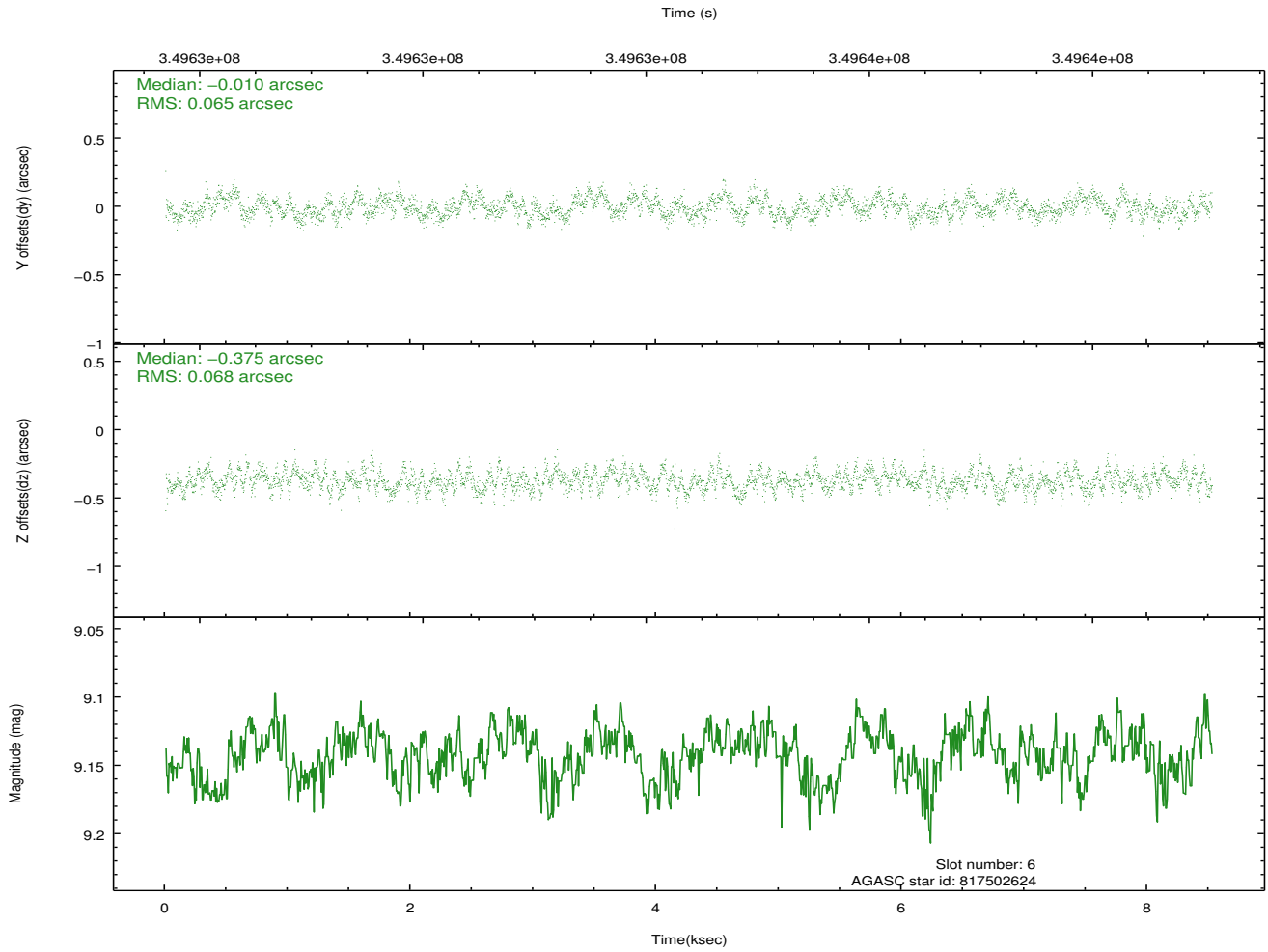
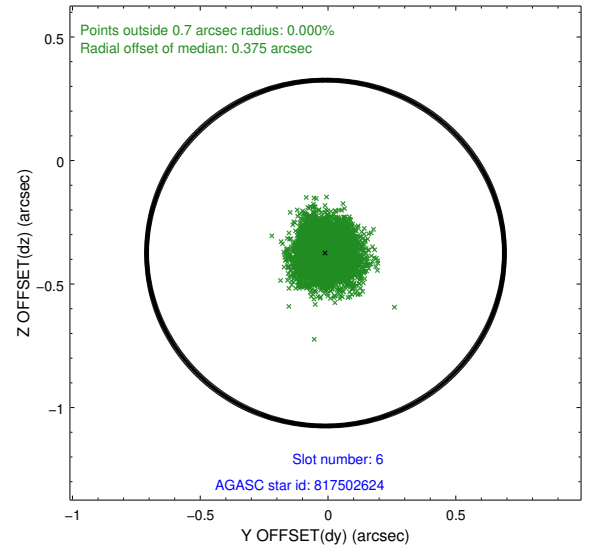
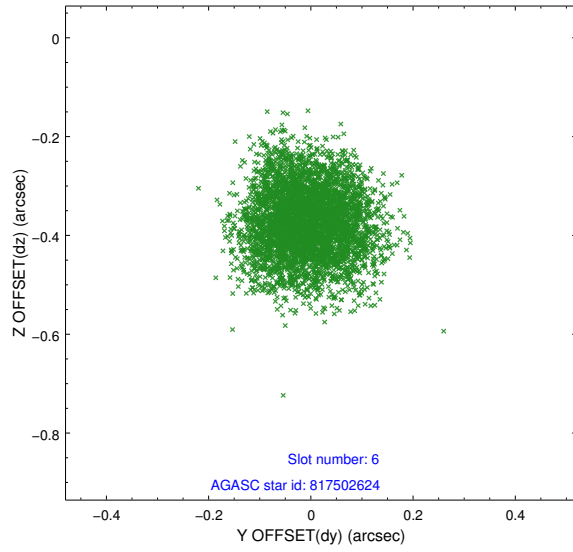
2.4.2 Slot 4



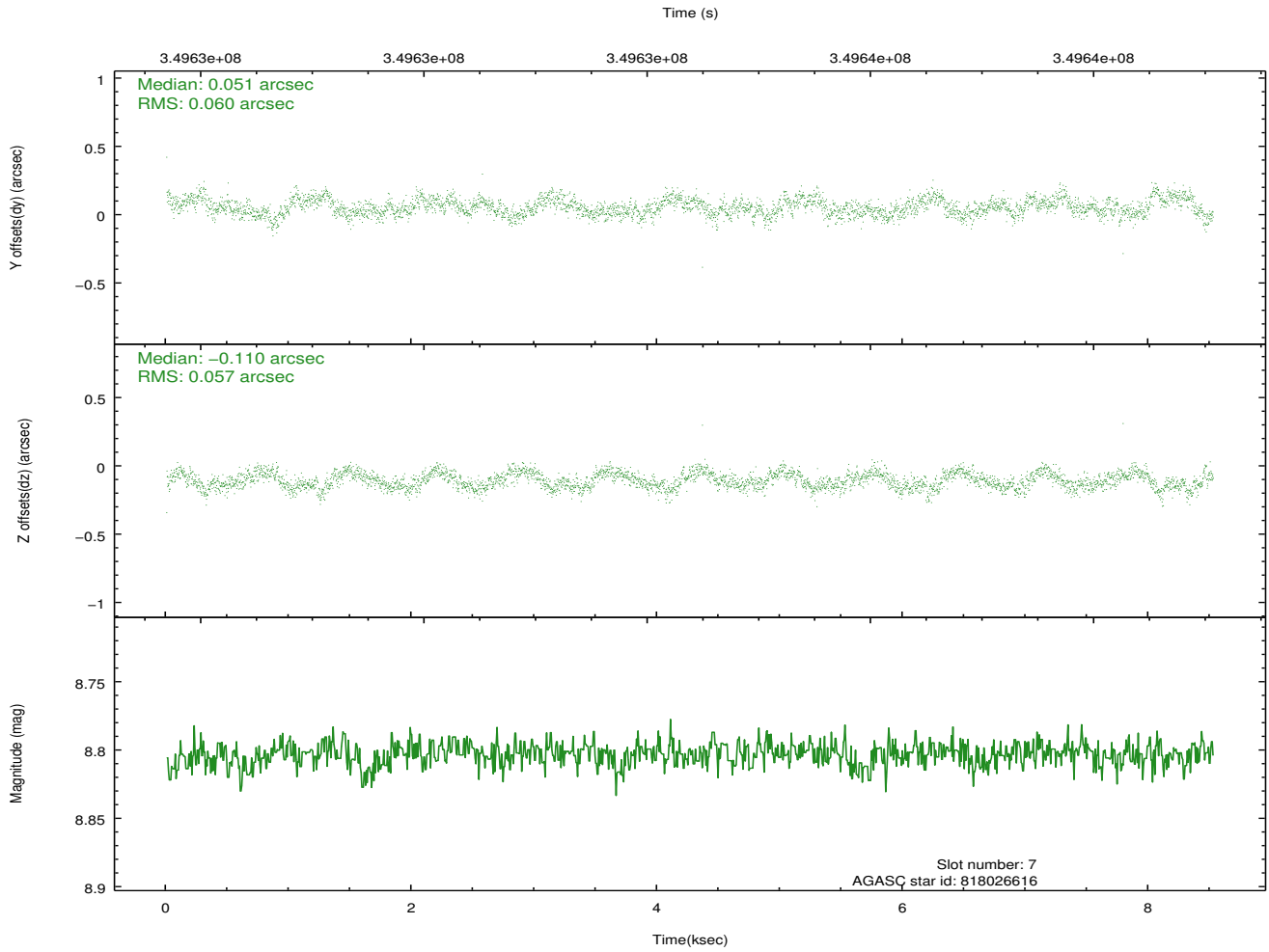
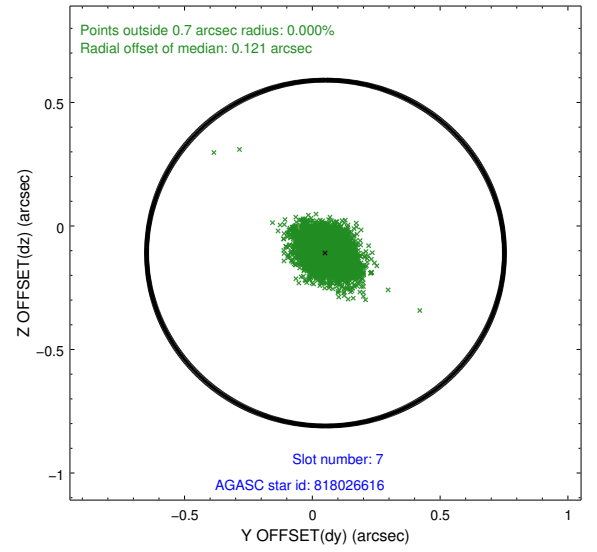
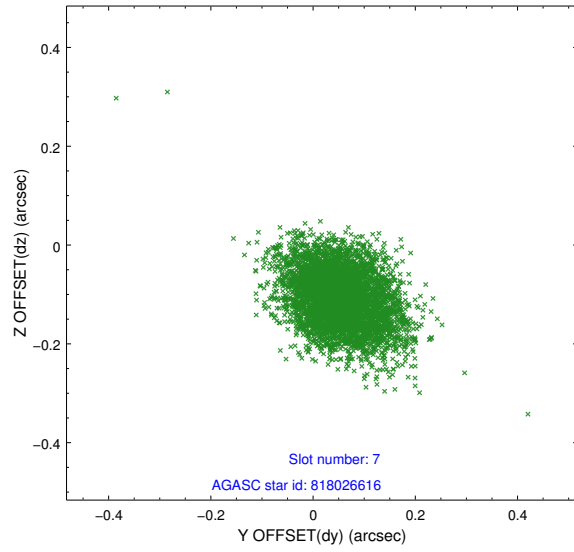
2.4.3 Slot 5



2.4.4 Slot 6

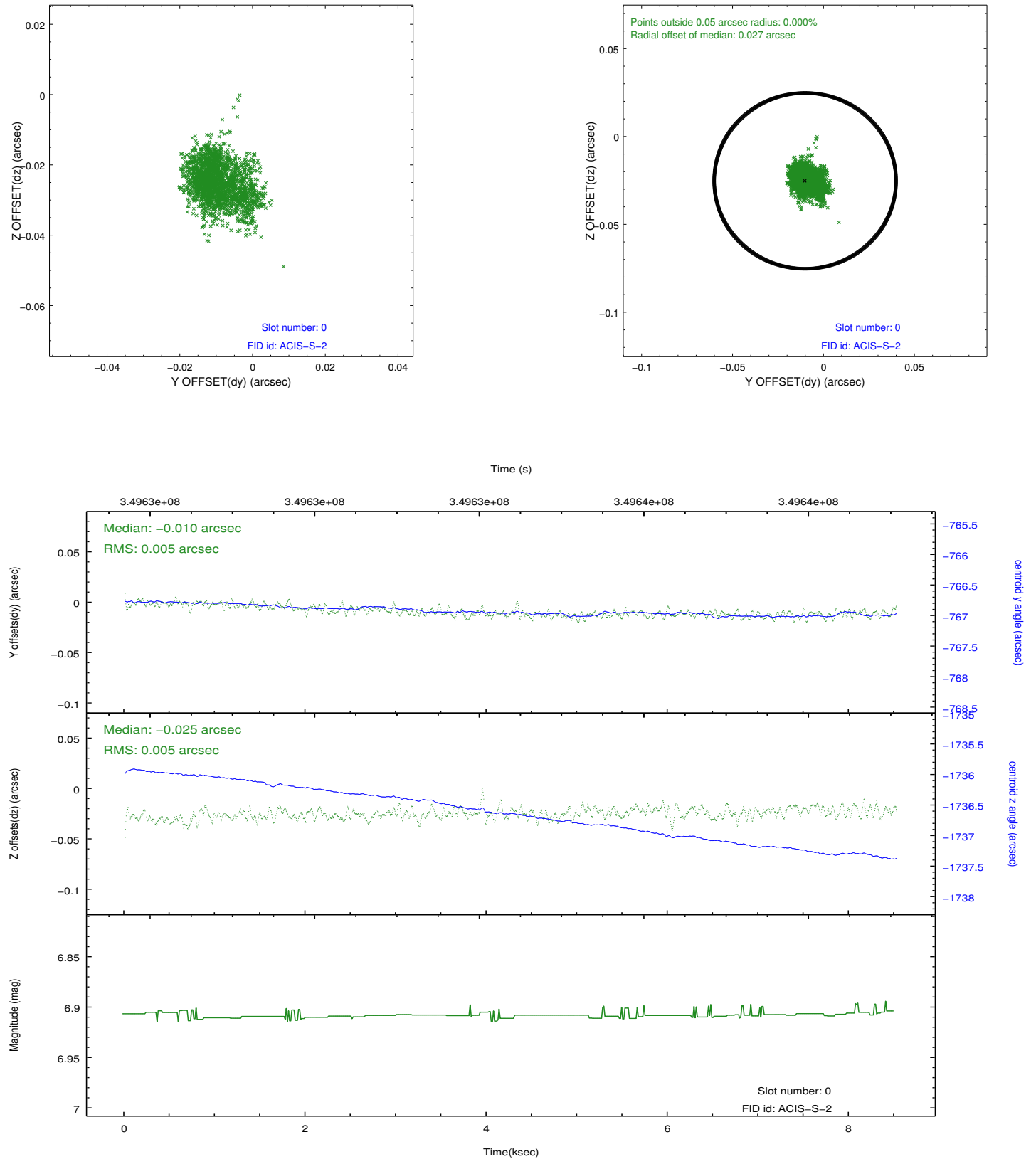


2.4.5 Slot 7

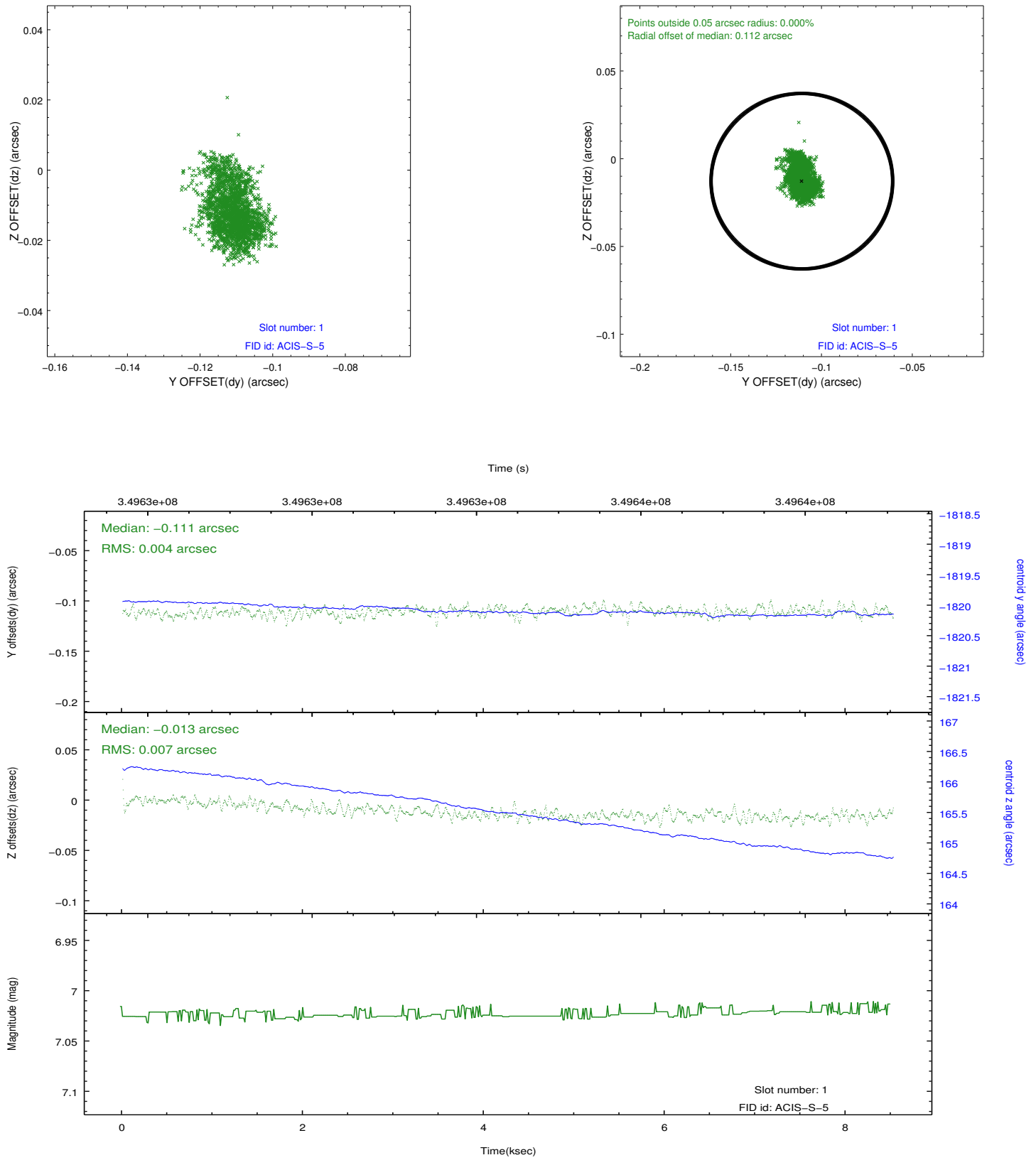


2.5 FID Slots

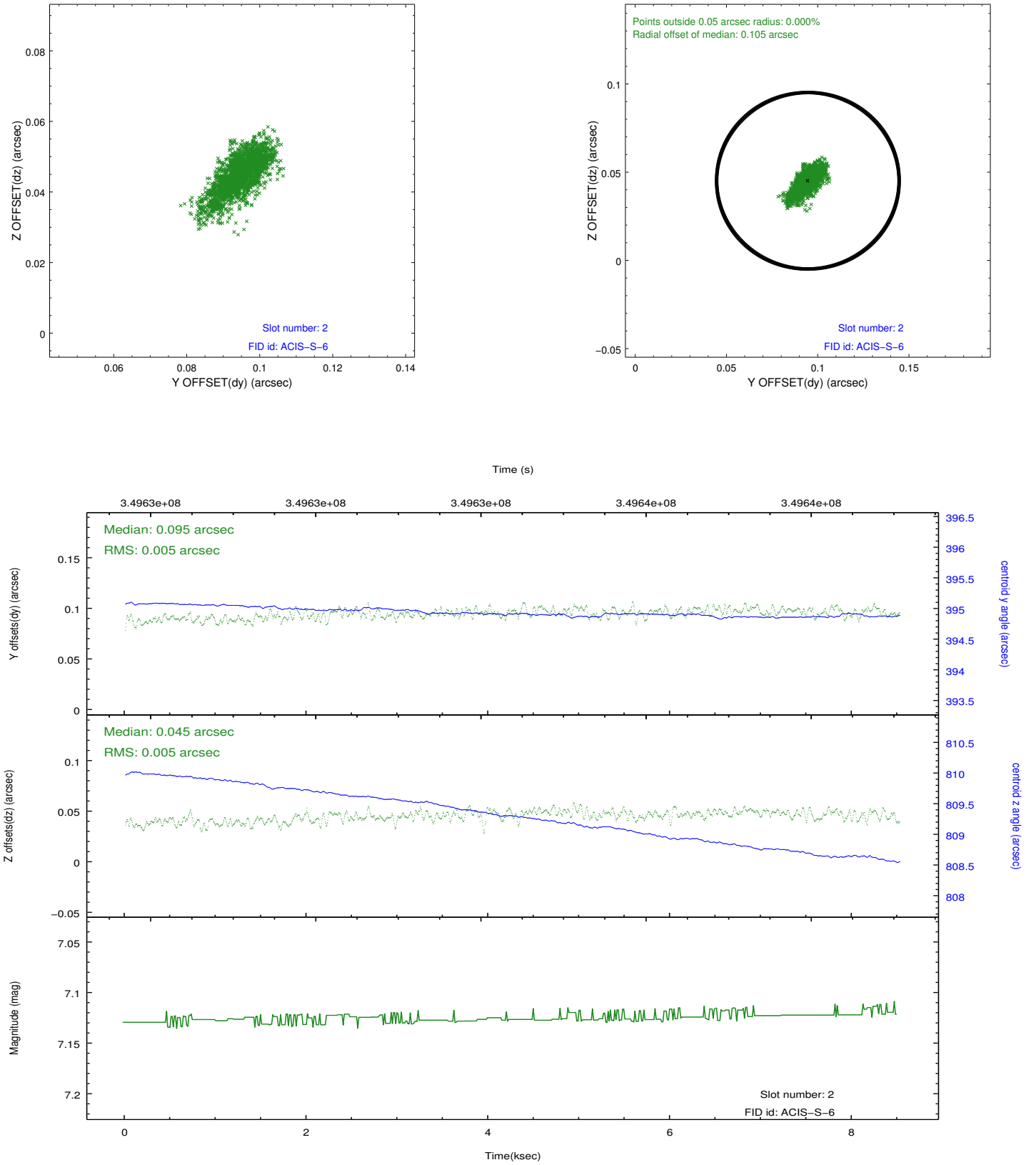
2.5.1 Slot 0



2.5.2 Slot 1



2.5.3 Slot 2



A Summary

A.1 Status

V&V Scientist	Jen Lauer
V&V Date (YYYY-MM-DD)	2012.06.04
V&V Edition	1
V&V Disposition and Status	OK
V&V Charge Time	8.51880006

A.2 Comments

Optional chip CCD I2 dropped.