

V&V Reference Report

L2 ASCDS Version : 8.4.4

Observation 8634 - L2 Version 2
Chandra X-Ray Center

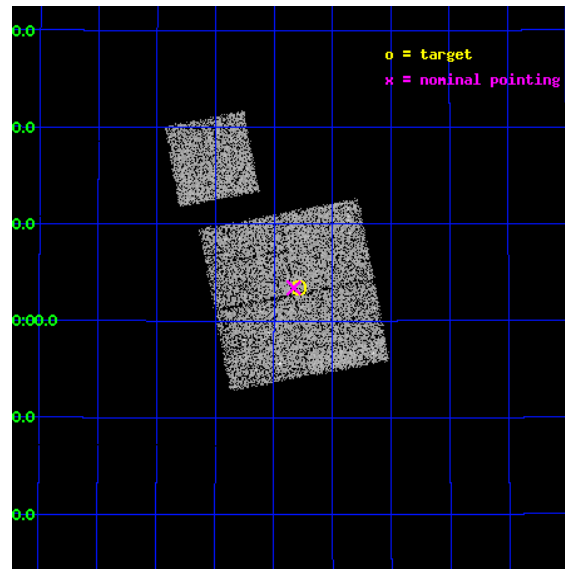
L2 Processing Date : May 5 2012

Contents

1	Front	2
2	OBI	3
2.1	OBI	3
2.1.1	Images	3
2.1.2	Bias	3
2.1.3	Parameters	4
2.1.4	Events	4
2.2	Compared Parameters	5
2.3	Aspect	6
2.4	Star Slots	9
2.4.1	Slot 3	9
2.4.2	Slot 4	10
2.4.3	Slot 5	11
2.4.4	Slot 6	12
2.4.5	Slot 7	13
2.5	FID Slots	14
2.5.1	Slot 0	14
2.5.2	Slot 1	15
2.5.3	Slot 2	16
A	Summary	17
A.1	Status	17
A.2	Comments	17

1 Front

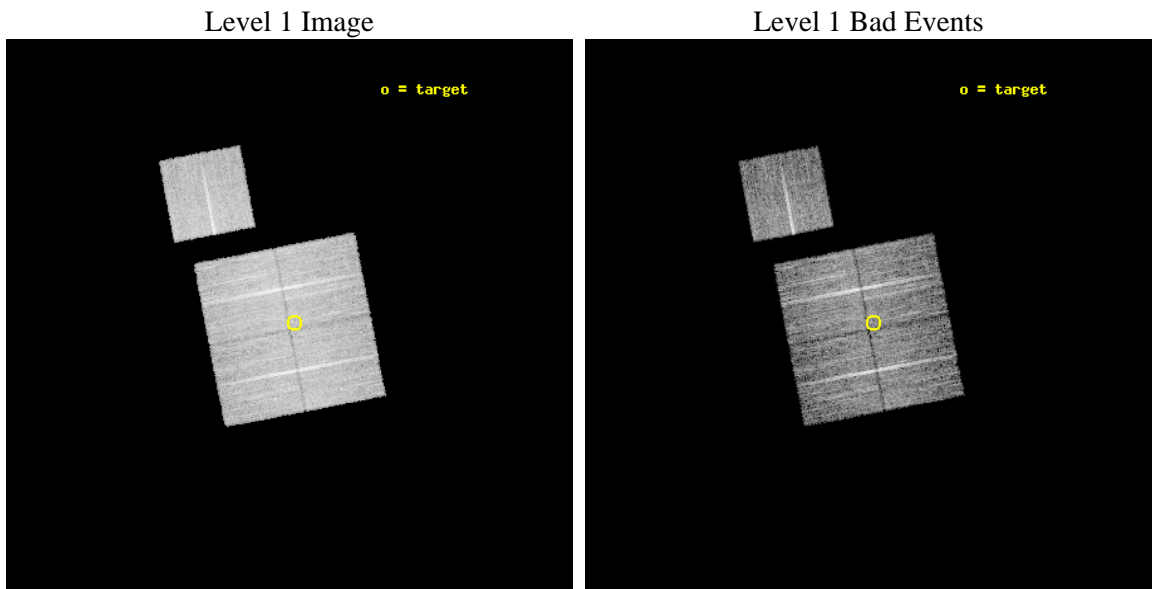
seq_num	900771	Sequence number
obs_id	8634	Observation id
title	Chandra Observations of the DEEP2 Fields	Proposal title
observer	Dr. Stephen Murray	Principal investigator
object	DEEP2 Field 2	Source name
dtcycle	0	
cycle	P	events from which exps? Prim/Second/Both
ra_targ	252.57252	Observer's specified target RA [deg]
dec_targ	35.056189	Observer's specified target Dec [deg]
ra_nom	252.5823667041	Nominal RA [deg]
dec_nom	35.057076933341	Nominal Dec [deg]
roll_nom	349.10301117563	Nominal Roll [deg]
revision	2	Processing version of data
ontime	8716.6194873452	Sum of GTIs [s]
livetime	8602.7304366611	Livetime [s]
ontime0	8713.355396986	Sum of GTIs [s]
ontime1	8716.5374073386	Sum of GTIs [s]
ontime2	8716.5784672499	Sum of GTIs [s]
ontime3	8716.6194873452	Sum of GTIs [s]
ontime6	8713.3143370748	Sum of GTIs [s]
l2events	29138	Number of level 2 events



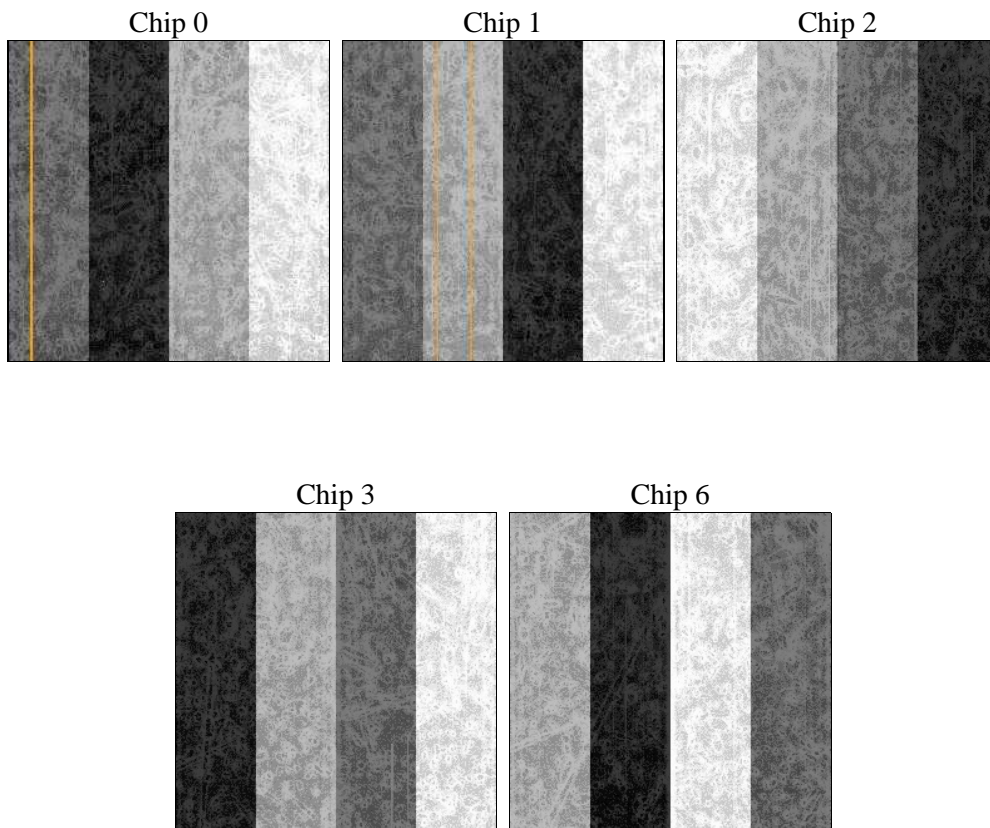
2 OBI

2.1 OBI

2.1.1 Images



2.1.2 Bias



2.1.3 Parameters

obi_num	0	Obi number	sched_exp_time	8941.000000	[s] Scheduled observation exposure time
ascdsver	8.4.4	Processing system revision	ontime	8716.6194873452	Sum of GTIs [s]
caldsver	4.4.9	 	ontime0	8713.355396986	Sum of GTIs [s]
date	2012-05-05T05:12:06	Date and time of file creation	ontime1	8716.5374073386	Sum of GTIs [s]
revision	2	Processing version of data	ontime2	8716.5784672499	Sum of GTIs [s]
			ontime3	8716.6194873452	Sum of GTIs [s]
			ontime6	8713.3143370748	Sum of GTIs [s]
			l1events	340702	Number of level 1 events

2.1.4 Events

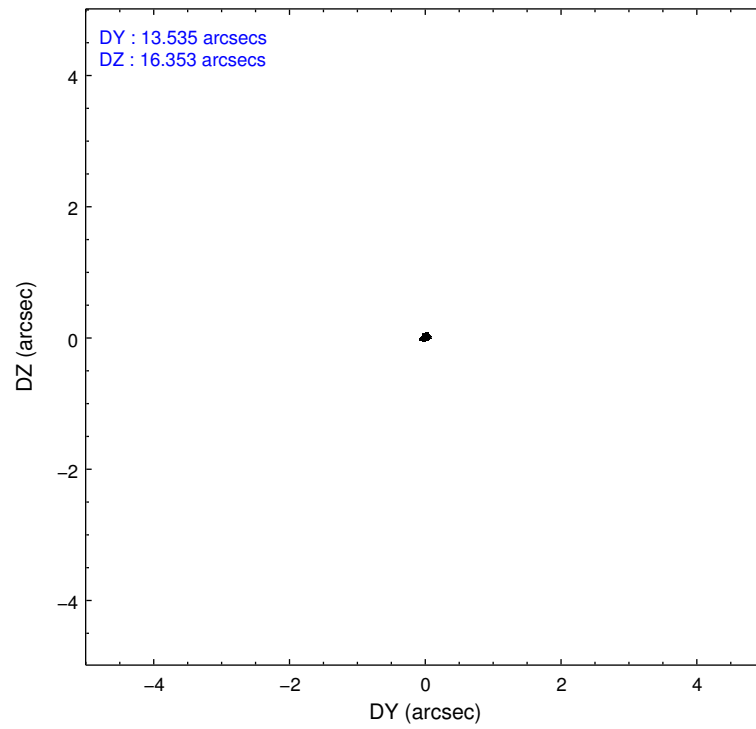
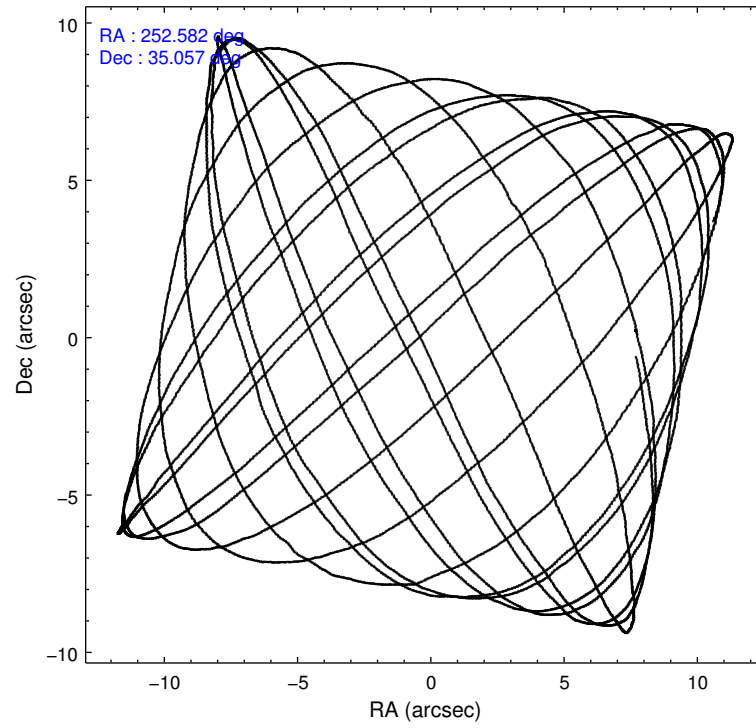
	ccd 0	ccd 1	ccd 2	ccd 3	ccd 6
level 1 events	64001	64176	76085	68079	68361
rejected events	56889	56548	69239	61494	61397
rejected %	88%	88%	91%	90%	89%

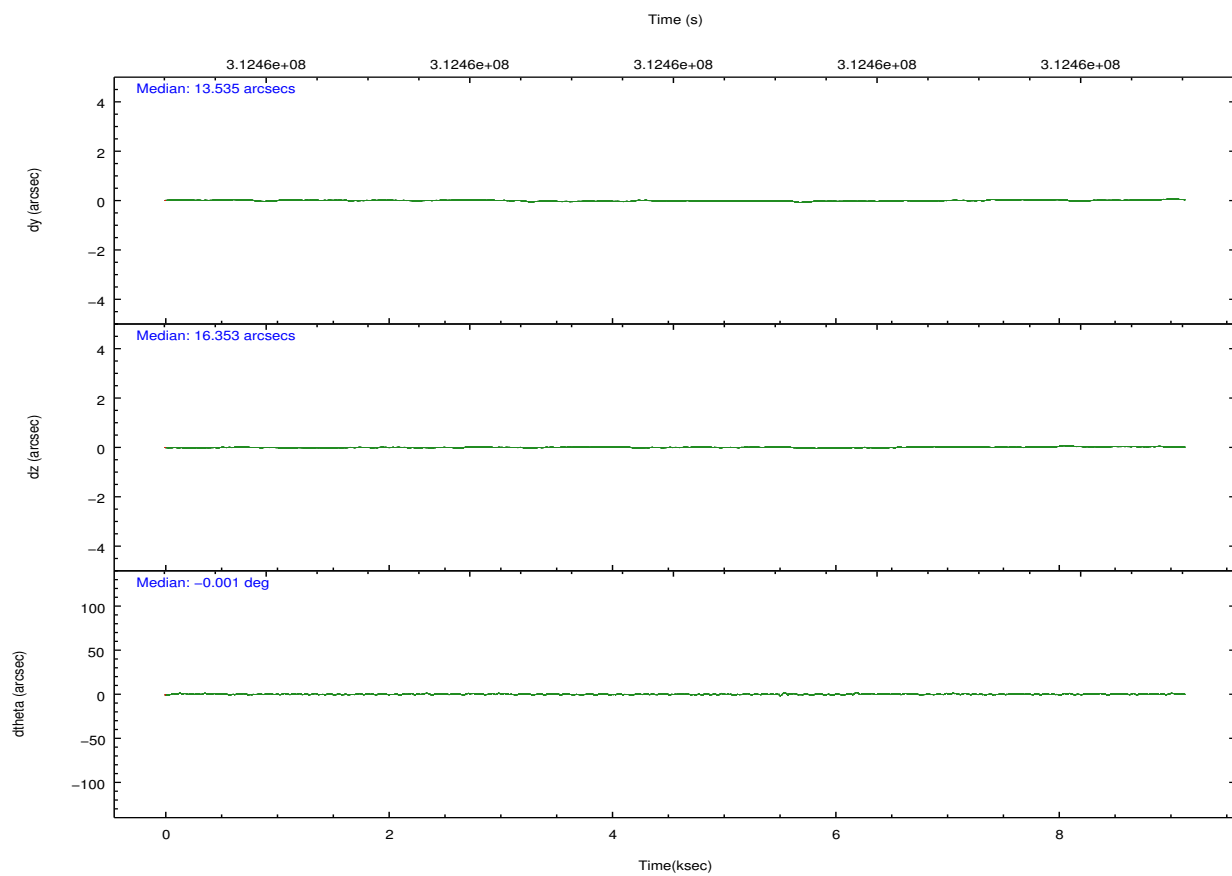
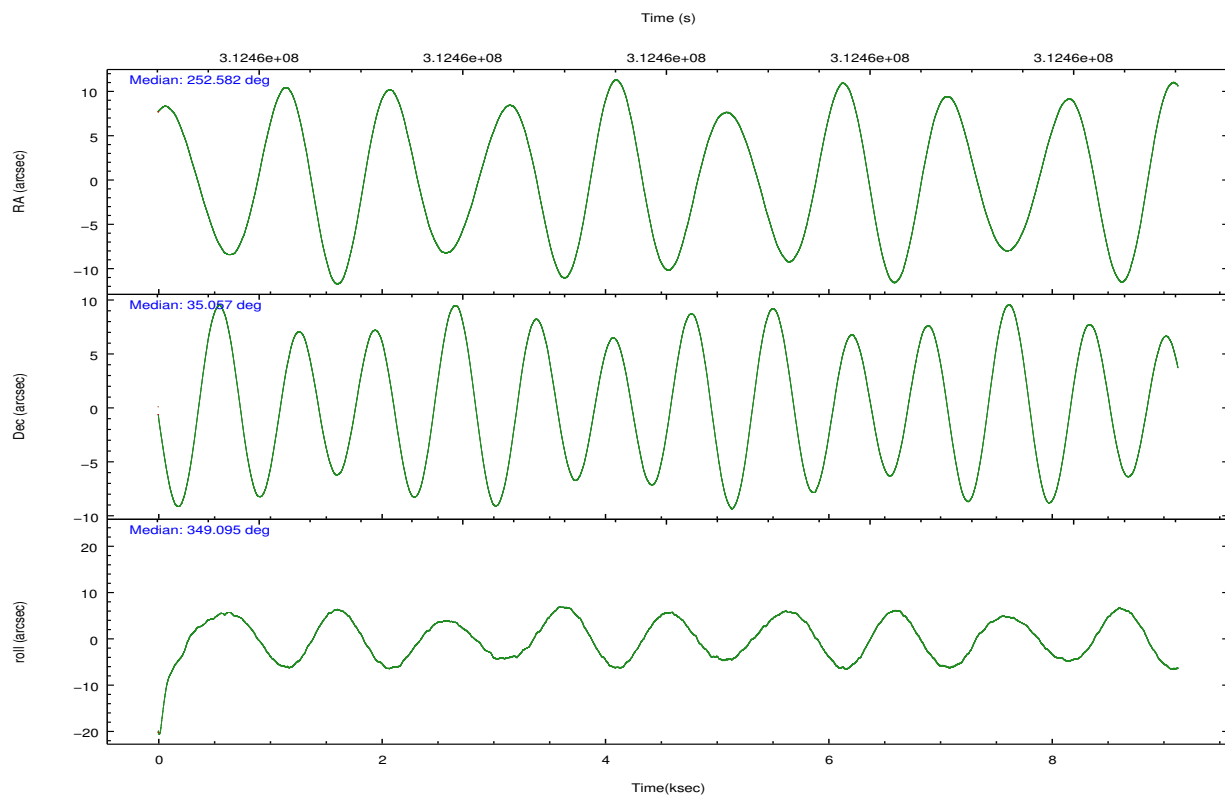
	ccd 0	ccd 1	ccd 2	ccd 3	ccd 6
grade 0 events	2584	2734	2495	2325	2358
	4%	4%	3%	3%	3%
grade 1 events	30	30	34	46	26
	0%	0%	0%	0%	0%
grade 2 events	1678	1790	1716	1437	1526
	2%	2%	2%	2%	2%
grade 3 events	767	807	664	735	848
	1%	1%	0%	1%	1%
grade 4 events	768	793	741	749	785
	1%	1%	0%	1%	1%
grade 5 events	2326	2632	2330	2797	2909
	3%	4%	3%	4%	4%
grade 6 events	1318	1510	1234	1343	1448
	2%	2%	1%	1%	2%
grade 7 events	54530	53880	66871	58647	58461
	85%	83%	87%	86%	85%

2.2 Compared Parameters

Parameter	Planned	Actual	Parameter	Planned	Actual
Instrument	ACIS	ACIS	Obspar format version number	7	7
Detector	ACIS-01236	ACIS-01236	Obspar file type	PREDICTED	ACTUAL
Grating	NONE	NONE	Obspar update status	NONE	UPDATED
Data mode	VFAINT	VFAINT	CCD I0 on	Y	Y
Observation mode	POINTING	POINTING	CCD I1 on	Y	Y
[deg] Pointing RA	252.550642	252.5823667041021	CCD I2 on	Y	Y
[deg] Pointing Dec	35.047985	35.05707693334124	CCD I3 on	Y	Y
[deg] Pointing Roll	348.912566	349.1030111756257	CCD S0 on	N	N
[mm] SIM focus pos	-0.782348	-0.7809083437167272	CCD S1 on	N	N
[mm] SIM defocus	0	0.001439871863259334	CCD S2 on	O1	Y
[mm] SIM translation stage pos	-233.592463	-233.5874344608287	CCD S3 on	N	N
[mm] SIM translation stage offset	0	-0.005018542100998502	CCD S4 on	N	N
[s] Observation start time (MET)	312455640.184000	312455264.11657	CCD S5 on	N	N
Observation start date	2007-11-26T09:12:55	2007-11-26T09:07:44	Number of optional ACIS chips dropped	0	0
[s] Observation end time (MET)	312464581.184000	312464715.12952	On-chip summing requested	N	N
Observation end date	2007-11-26T11:41:56	2007-11-26T11:45:15	Subarray requested	NONE	NONE
Read mode	TIMED	TIMED	Alternating exposures requested	N	N
			[s] Primary exposure time	0.000000	3.1

2.3 Aspect



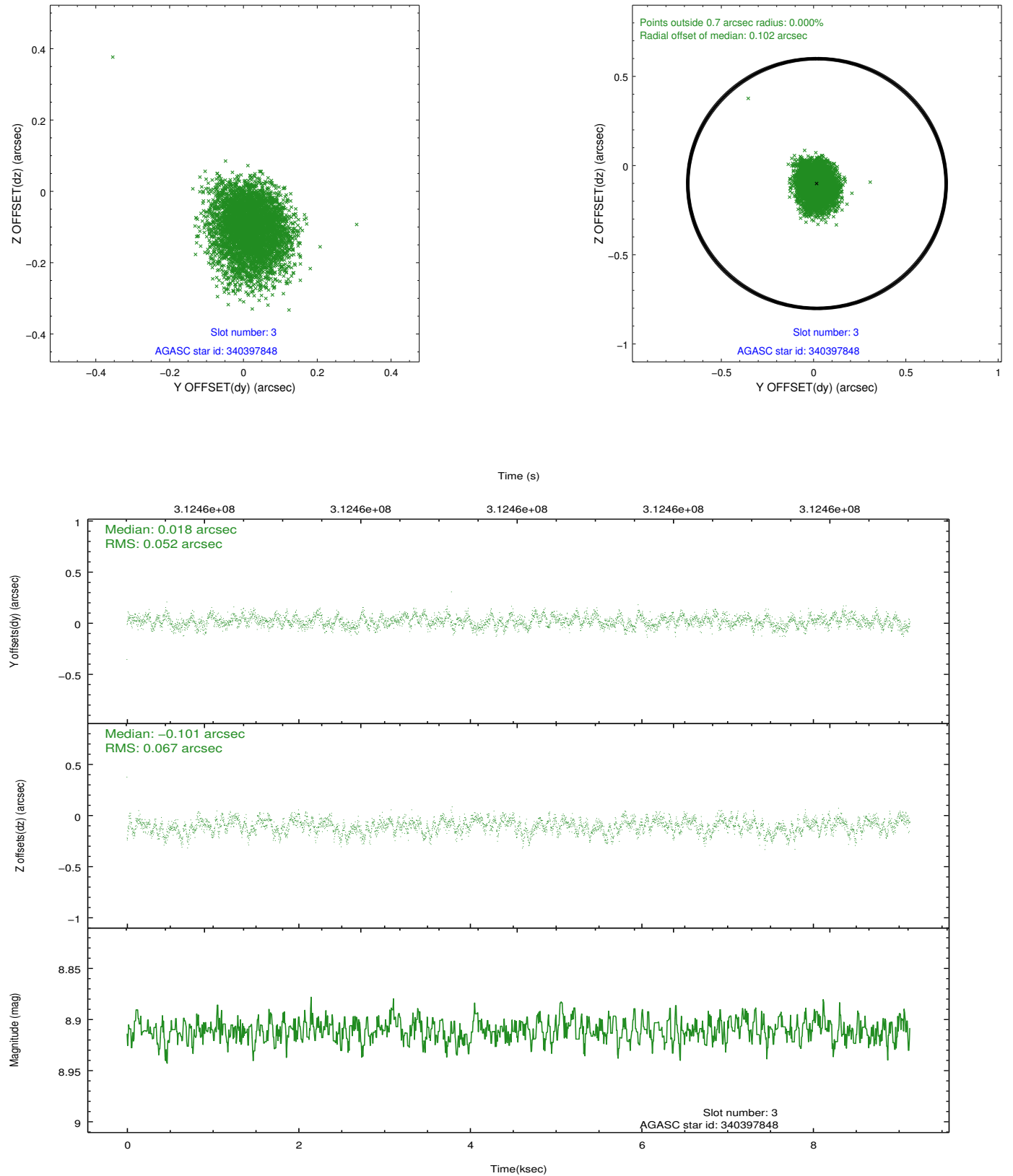


Slot Statistics

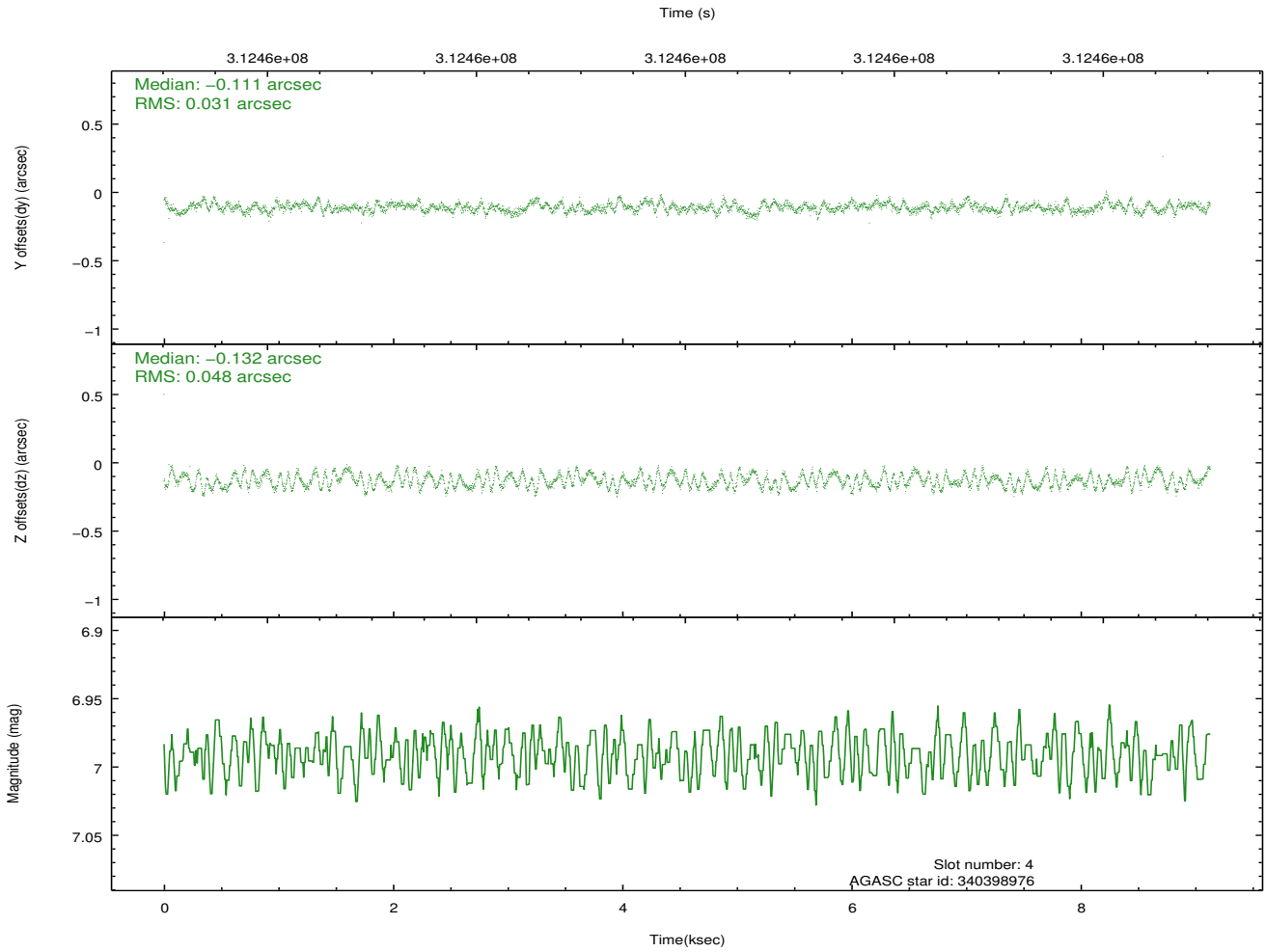
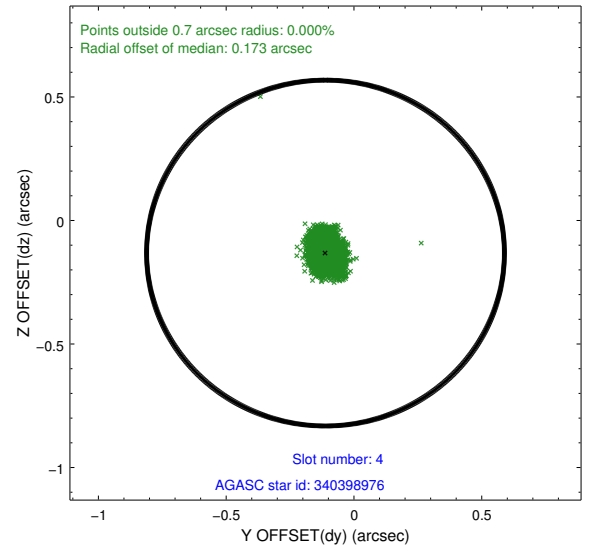
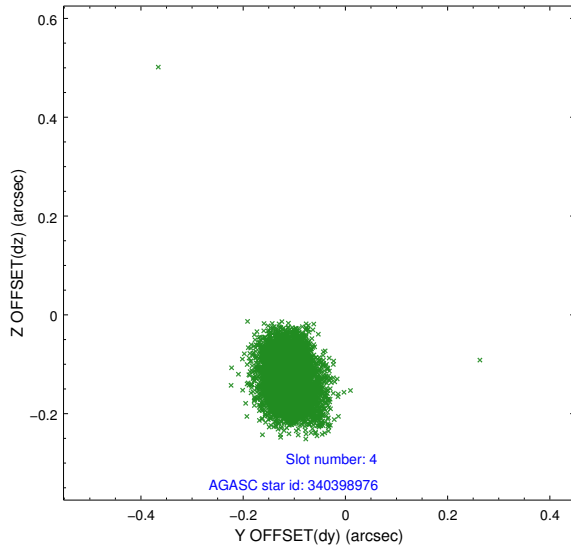
slot	status	id	mag	n_pts	med_dy	med_dz	dr1	dr2	ra	dec	mean_y	mean_z
0	FID	ACIS-I-1	7.22	2228	0.065	-0.050	0.007	0.012	0.000000	0.000000	926.01	-840.06
1	FID	ACIS-I-5	7.22	2228	-0.213	0.063	0.006	0.011	0.000000	0.000000	-1822.00	1057.31
2	FID	ACIS-I-6	7.23	2228	0.056	0.058	0.007	0.012	0.000000	0.000000	390.96	1702.42
3	GUIDE	340397848	8.91	4454	0.018	-0.101	0.090	0.145	252.880784	35.553189	598.83	1972.36
4	GUIDE	340398976	6.99	4455	-0.111	-0.132	0.061	0.093	253.047352	35.489638	1122.35	1844.38
5	GUIDE	340401160	9.34	4452	0.089	0.090	0.127	0.201	252.460112	35.243739	-396.27	641.01
6	GUIDE	340406200	6.70	4455	-0.005	0.063	0.068	0.107	252.267621	34.956301	-756.14	-482.96
7	GUIDE	340402736	8.42	4451	0.016	0.071	0.093	0.139	253.290822	34.696333	2392.01	-812.74

2.4 Star Slots

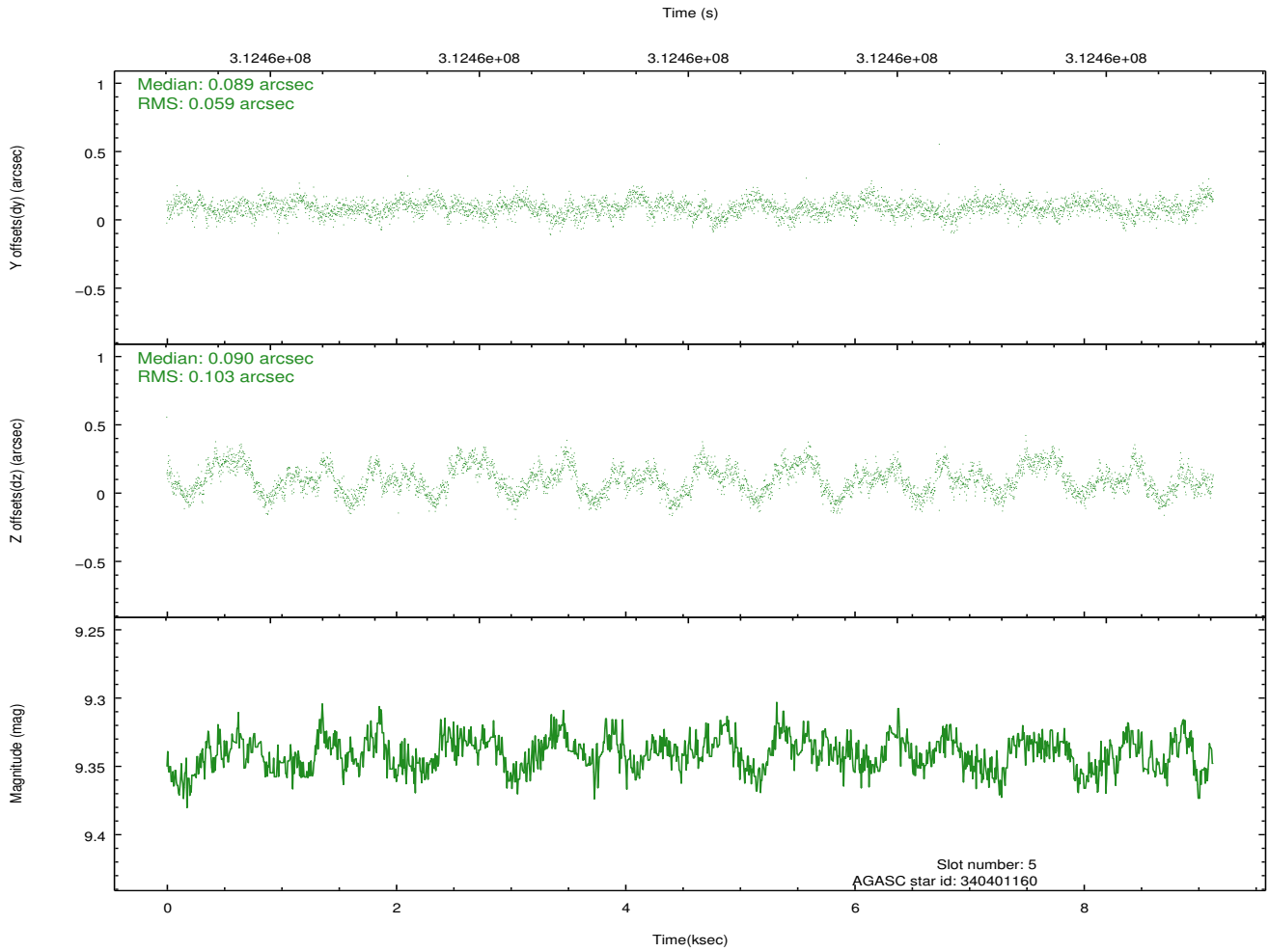
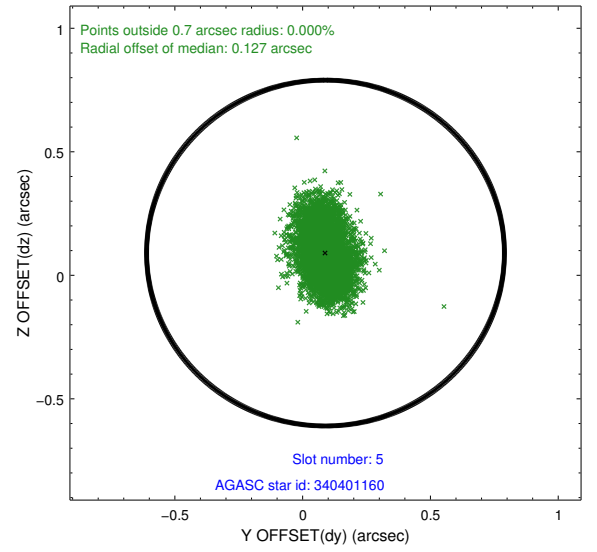
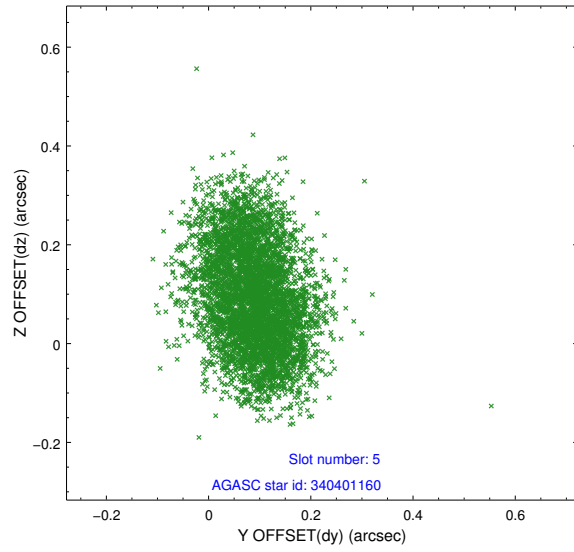
2.4.1 Slot 3



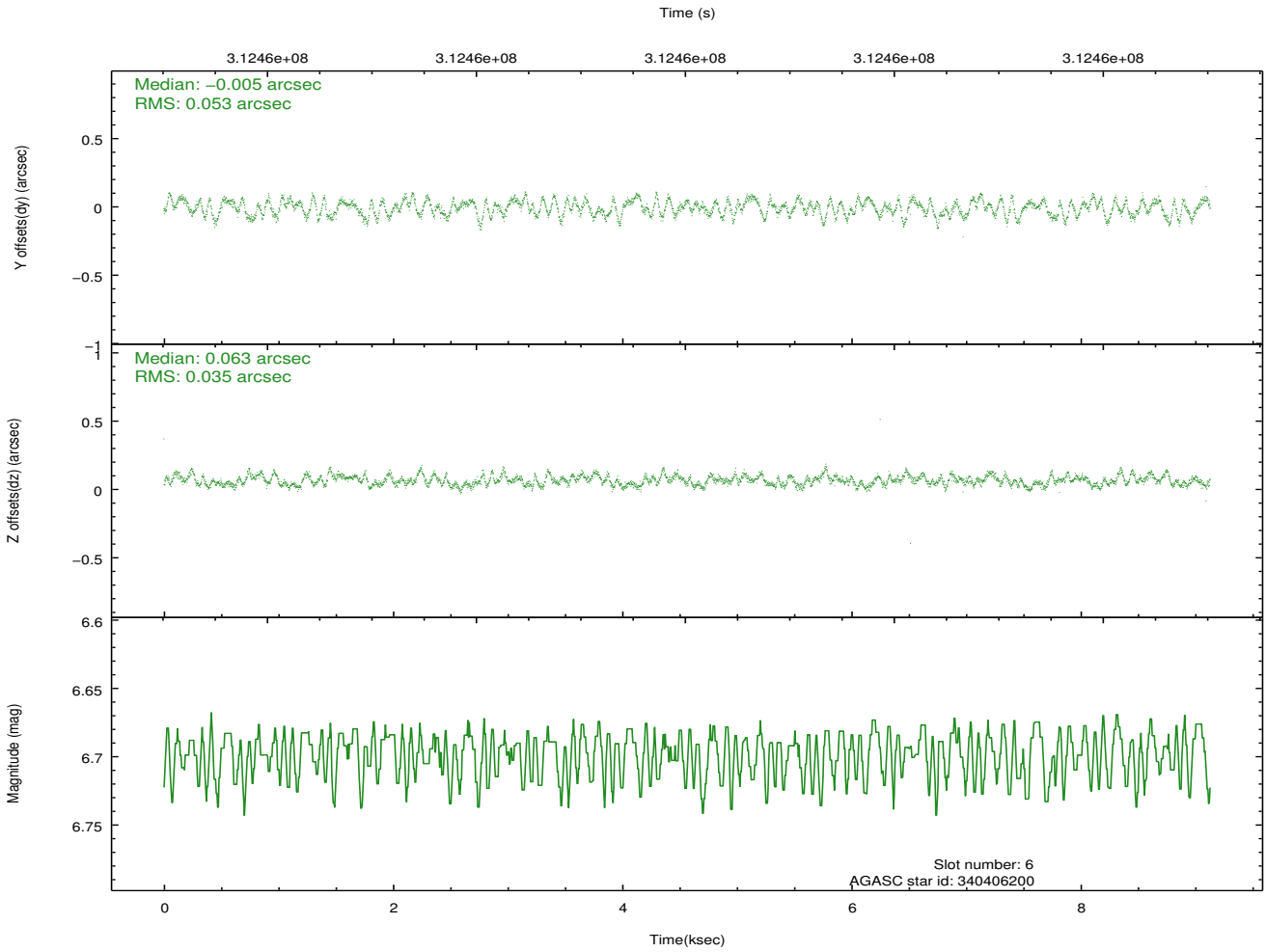
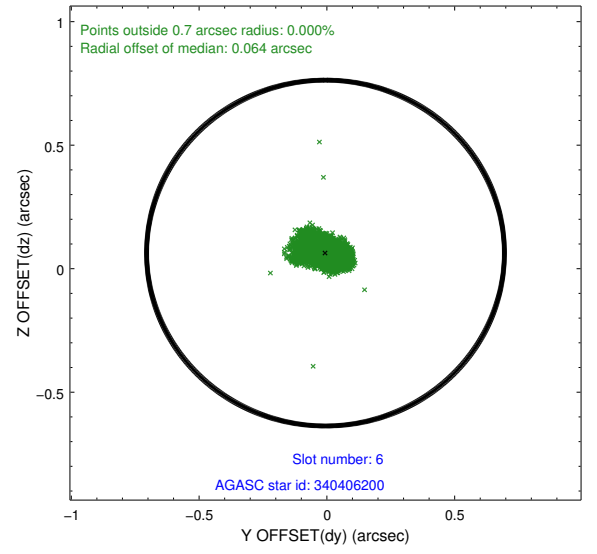
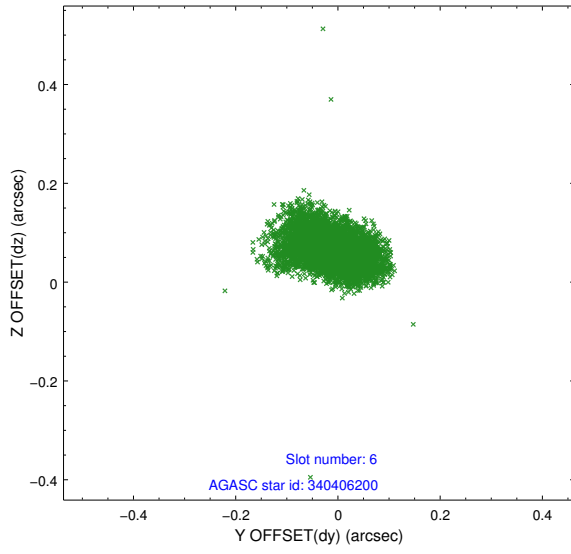
2.4.2 Slot 4



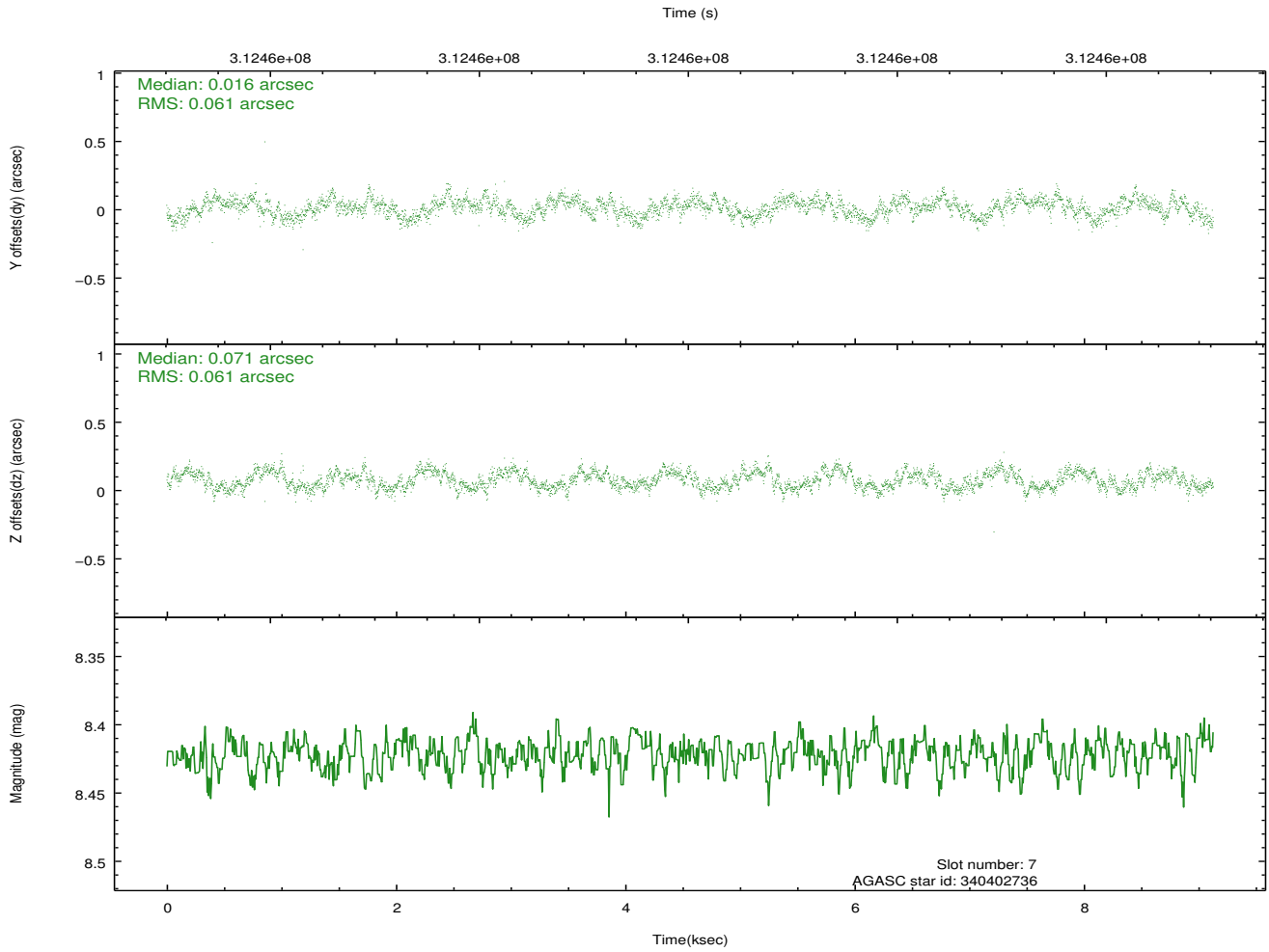
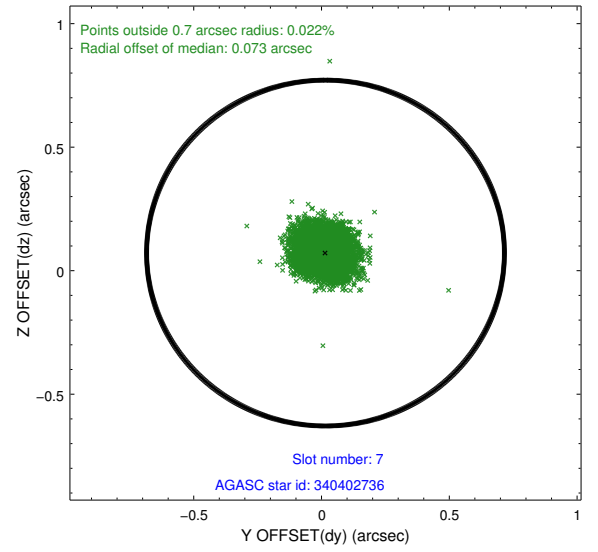
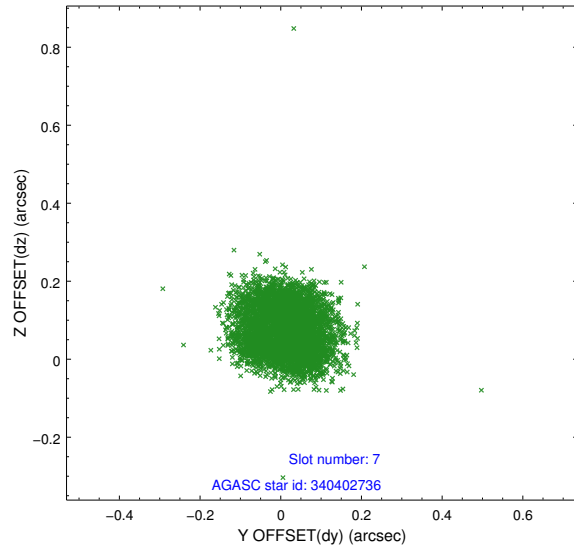
2.4.3 Slot 5



2.4.4 Slot 6

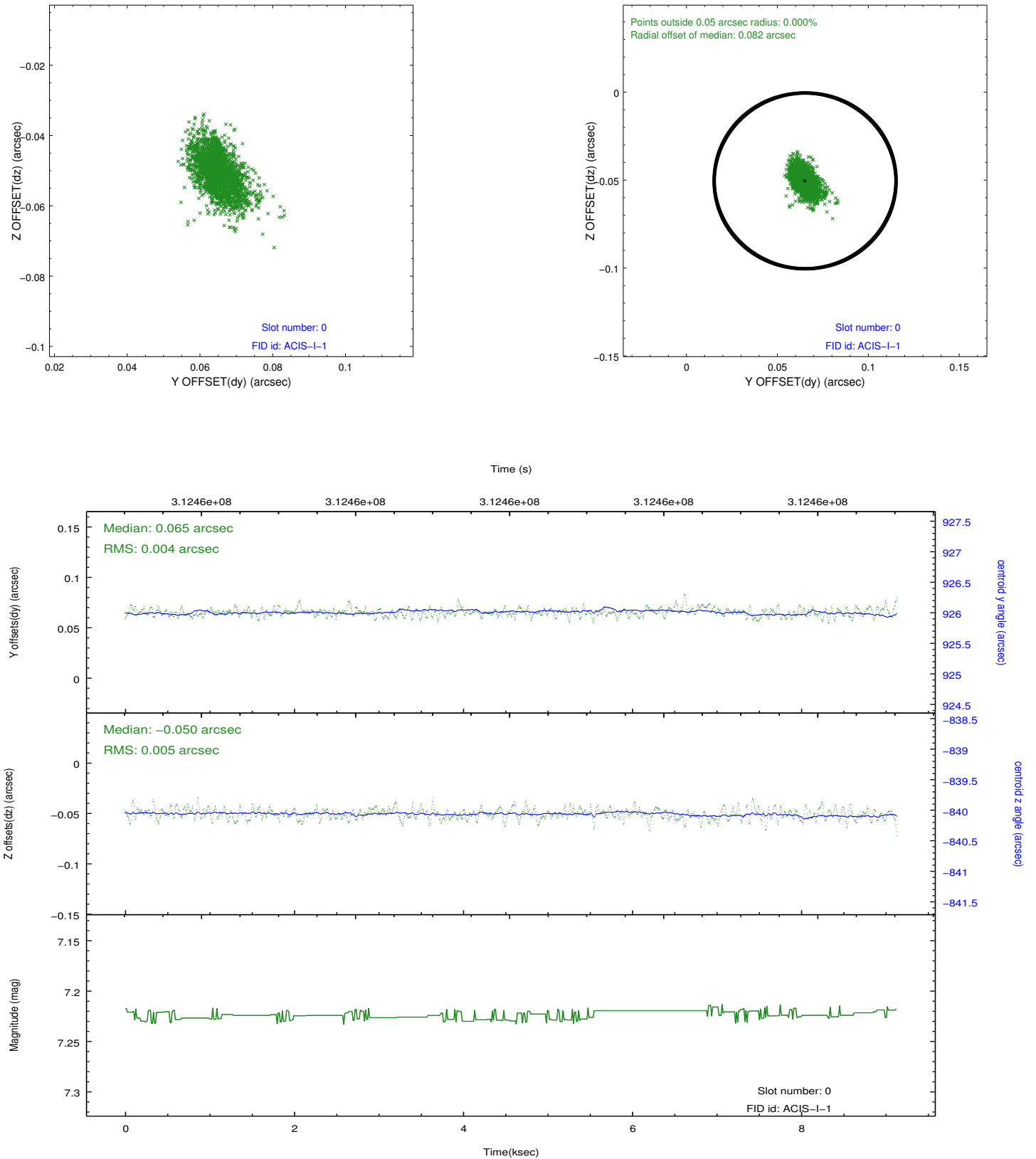


2.4.5 Slot 7

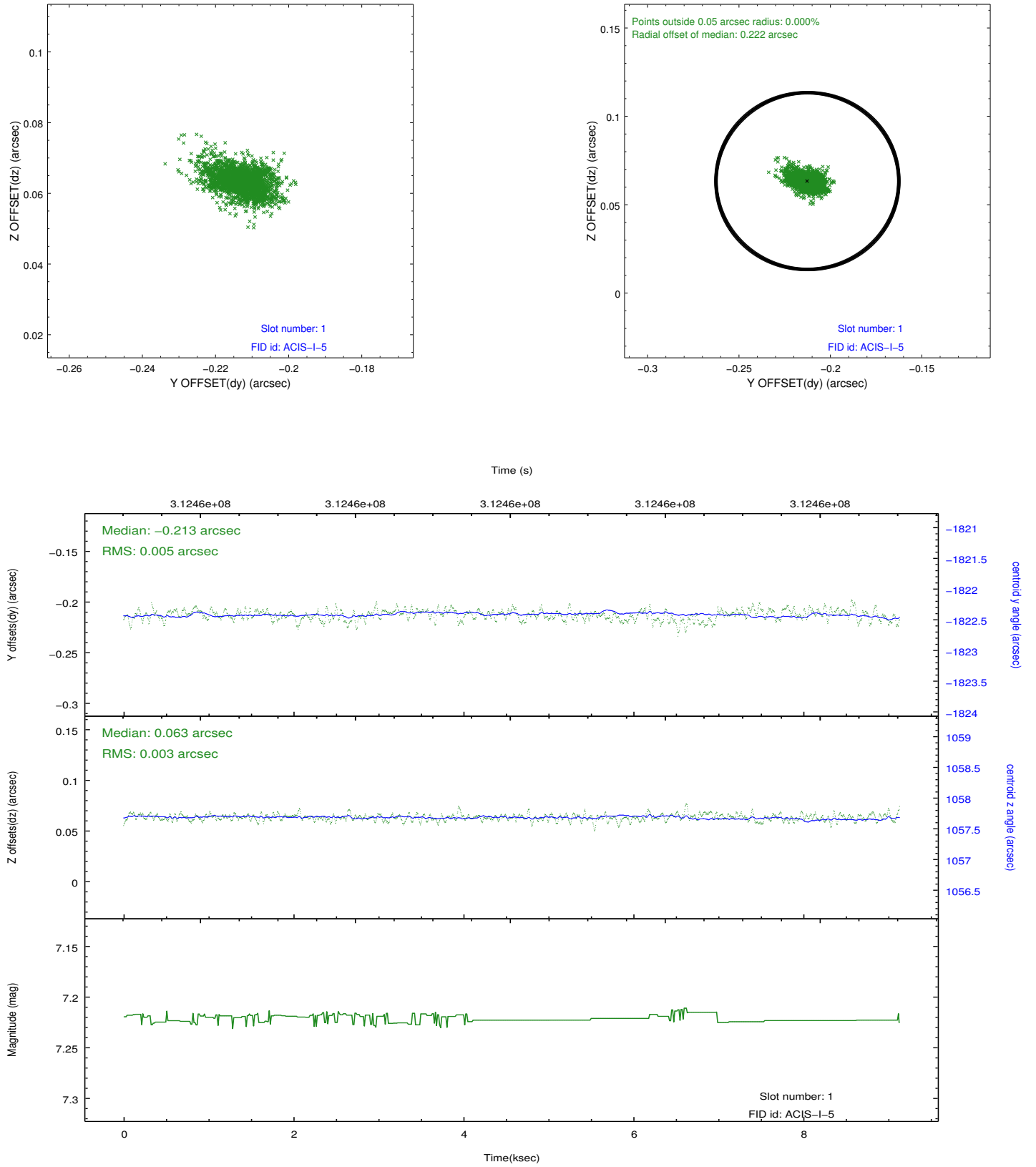


2.5 FID Slots

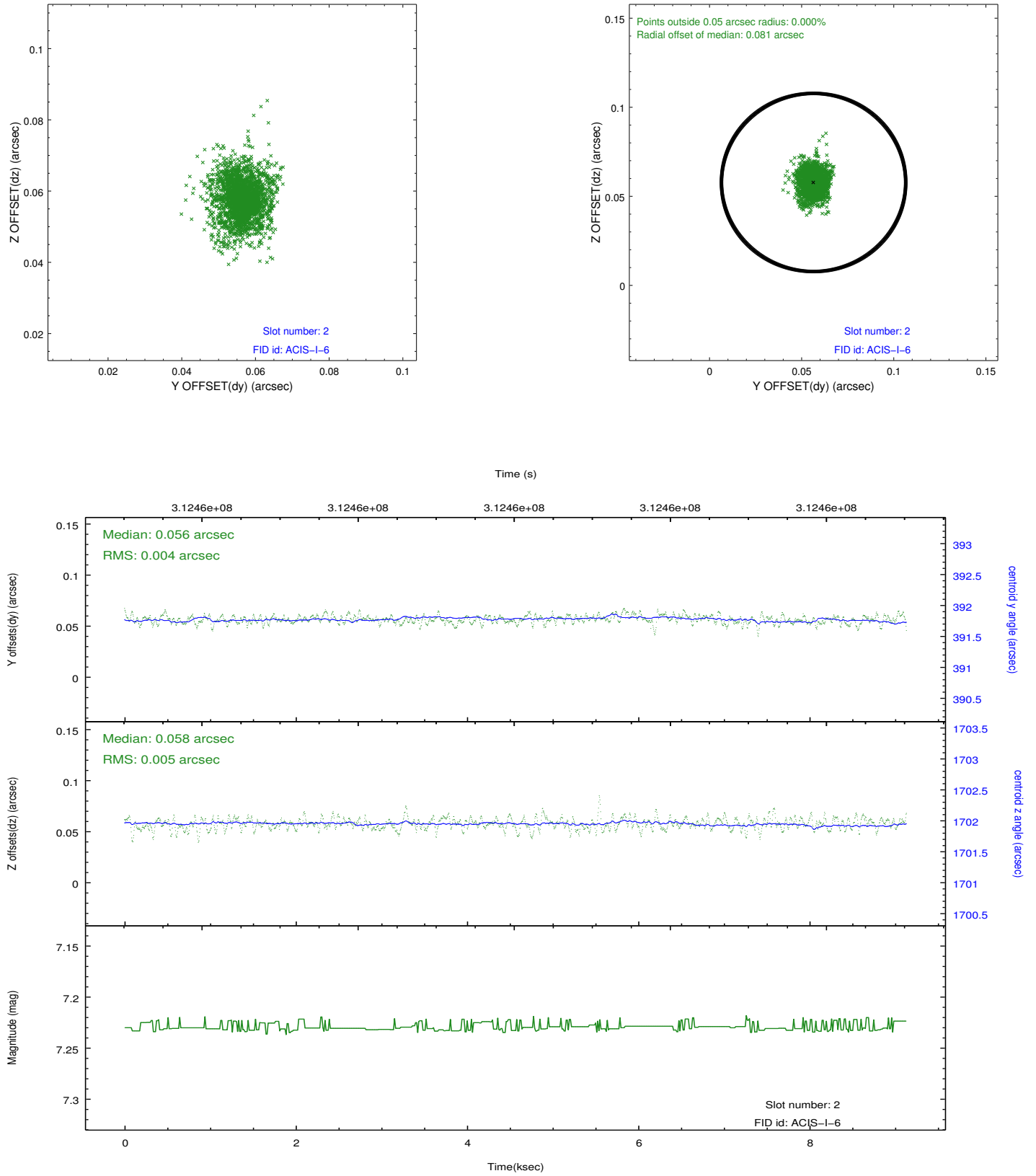
2.5.1 Slot 0



2.5.2 Slot 1



2.5.3 Slot 2



A Summary

A.1 Status

V&V Scientist	Jen Lauer
V&V Date (YYYY-MM-DD)	2012.05.07
V&V Edition	1
V&V Disposition and Status	OK
V&V Charge Time	8.71720006

A.2 Comments