

# V&V Reference Report

## L2 ASCDS Version : 8.4.4

Observation 8244 - L2 Version 2  
Chandra X-Ray Center

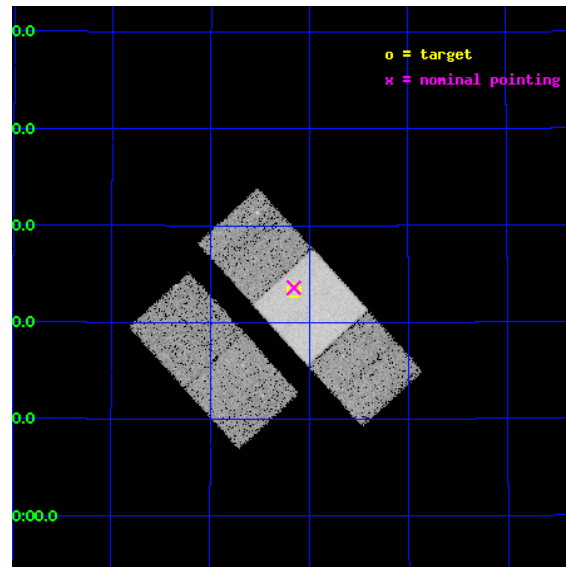
L2 Processing Date : May 8 2012

## Contents

<b>1</b>	<b>Front</b>	<b>2</b>
<b>2</b>	<b>OBI</b>	<b>3</b>
2.1	OBI . . . . .	3
2.1.1	Images . . . . .	3
2.1.2	Bias . . . . .	3
2.1.3	Parameters . . . . .	4
2.1.4	Events . . . . .	4
2.2	Compared Parameters . . . . .	5
2.3	Aspect . . . . .	6
2.4	Star Slots . . . . .	9
2.4.1	Slot 3 . . . . .	9
2.4.2	Slot 4 . . . . .	10
2.4.3	Slot 5 . . . . .	11
2.4.4	Slot 6 . . . . .	12
2.4.5	Slot 7 . . . . .	13
2.5	FID Slots . . . . .	14
2.5.1	Slot 0 . . . . .	14
2.5.2	Slot 1 . . . . .	15
2.5.3	Slot 2 . . . . .	16
<b>A</b>	<b>Summary</b>	<b>17</b>
A.1	Status . . . . .	17
A.2	Comments . . . . .	17

# 1 Front

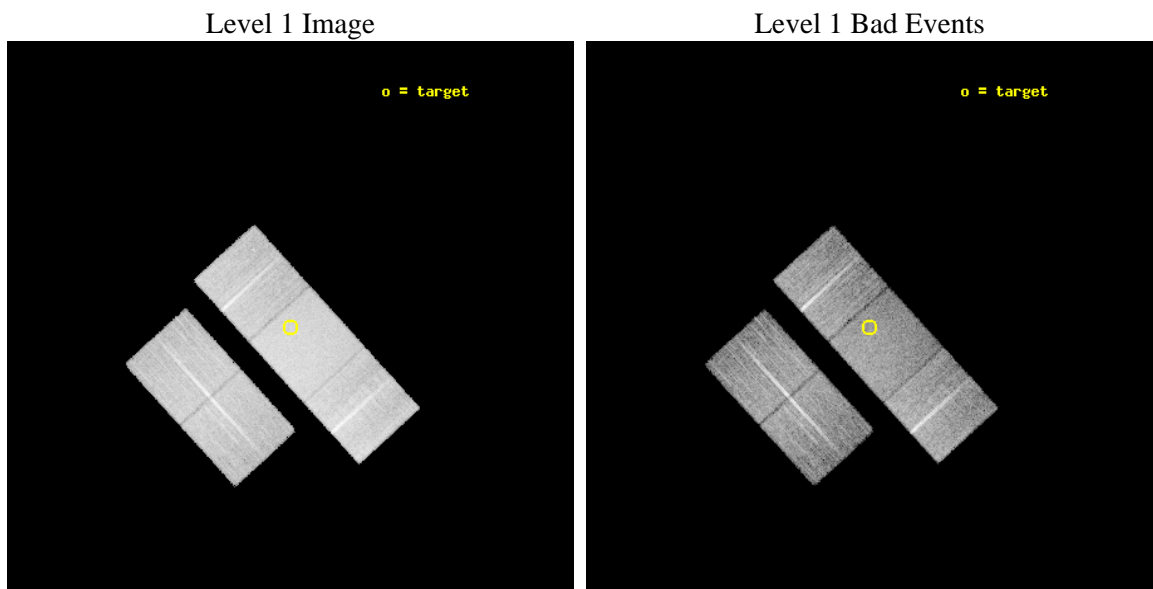
seq_num	701559	Sequence number
obs_id	8244	Observation id
title	A snapshot X-ray/radio survey of AGNs selected from the long menu of SDSS galaxies	Proposal title
observer	Dr. Sebastian Heinz	Principal investigator
object	2MASX J160109+462318	Source name
dtcycle	0	&#160
cycle	P	events from which exps? Prim/Second/Both
ra_targ	240.287792	Observer's specified target RA [deg]
dec_targ	46.388303	Observer's specified target Dec [deg]
ra_nom	240.28911840024	Nominal RA [deg]
dec_nom	46.393107025101	Nominal Dec [deg]
roll_nom	47.655685098528	Nominal Roll [deg]
revision	2	Processing version of data
ontime	11783.100090623	Sum of GTIs [s]
livetime	11629.145213347	Livetime [s]
ontime2	11779.959130287	Sum of GTIs [s]
ontime3	11776.818100154	Sum of GTIs [s]
ontime6	11783.100090623	Sum of GTIs [s]
ontime7	11783.100090623	Sum of GTIs [s]
ontime8	11783.100090623	Sum of GTIs [s]
l2events	111744	Number of level 2 events



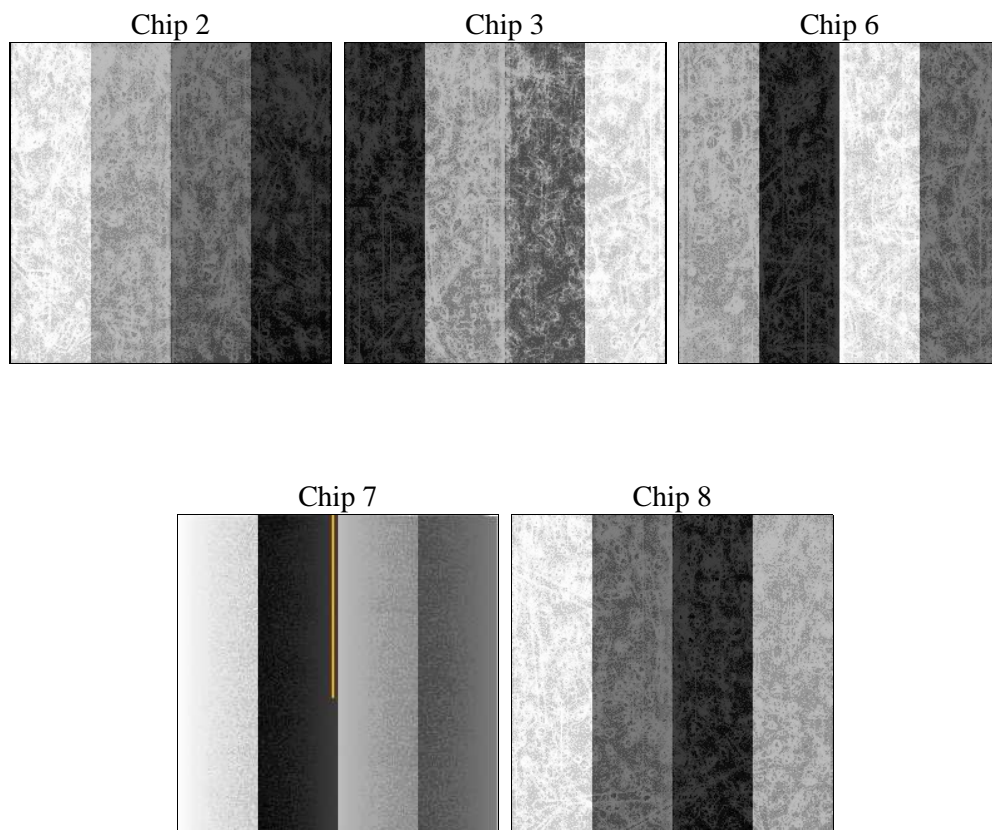
## 2 OBI

### 2.1 OBI

#### 2.1.1 Images



#### 2.1.2 Bias



### 2.1.3 Parameters

obi_num	0	Obi number	sched_exp_time	11635.113000	[s] Scheduled observation exposure time
ascdsver	8.4.4	Processing system revision	ontime	11783.100090623	Sum of GTIs [s]
caldsver	4.4.9	&#160	ontime2	11779.959130287	Sum of GTIs [s]
date	2012-05-08T02:15:24	Date and time of file creation	ontime3	11776.818100154	Sum of GTIs [s]
revision	2	Processing version of data	ontime6	11783.100090623	Sum of GTIs [s]
			ontime7	11783.100090623	Sum of GTIs [s]
			ontime8	11783.100090623	Sum of GTIs [s]
			l1events	633072	Number of level 1 events

### 2.1.4 Events

	ccd 2	ccd 3	ccd 6	ccd 7	ccd 8
level 1 events	111592	107406	114789	155697	143588
rejected events	98504	93775	100850	91423	111524
rejected %	88%	87%	87%	58%	77%

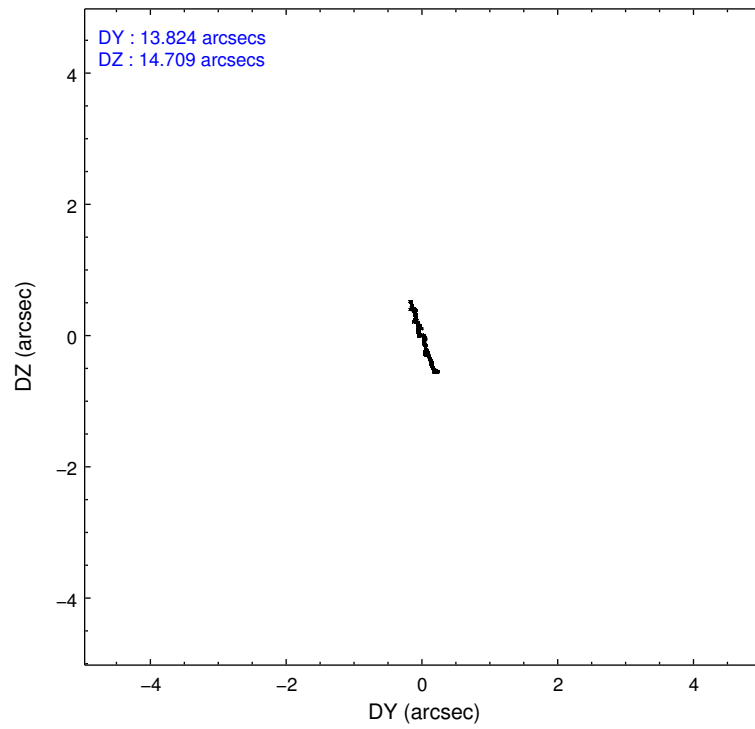
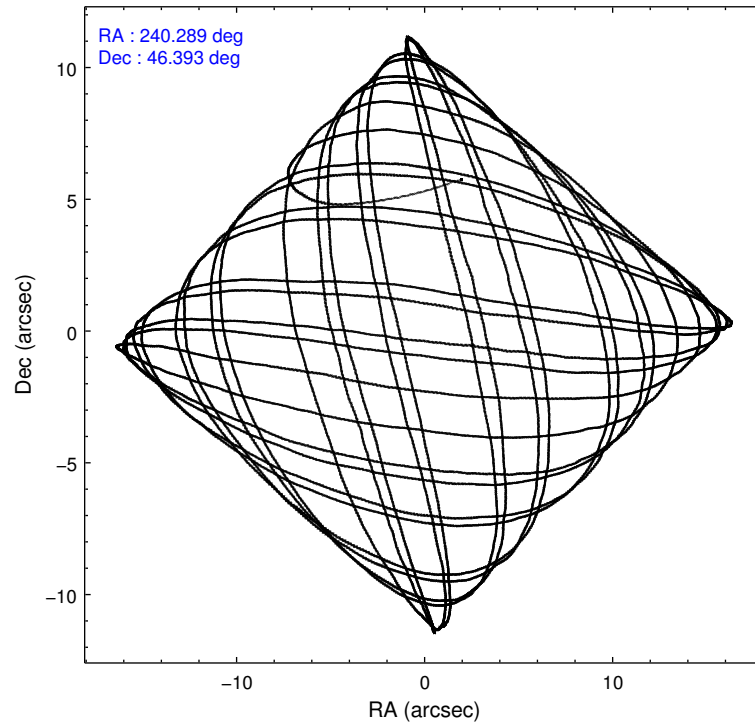
	ccd 2	ccd 3	ccd 6	ccd 7	ccd 8
grade 0 events	5878	6115	5541	5551	10500
	5%	5%	4%	3%	7%
grade 1 events	75	71	48	133	107
	0%	0%	0%	0%	0%
grade 2 events	2754	2700	3090	13152	7229
	2%	2%	2%	8%	5%
grade 3 events	1213	1271	1268	5622	3382
	1%	1%	1%	3%	2%
grade 4 events	1250	1332	1321	5433	3092
	1%	1%	1%	3%	2%
grade 5 events	4333	5298	5318	14602	7119
	3%	4%	4%	9%	4%
grade 6 events	2120	2337	2846	35195	8189
	1%	2%	2%	22%	5%
grade 7 events	93969	88282	95357	76009	103970
	84%	82%	83%	48%	72%

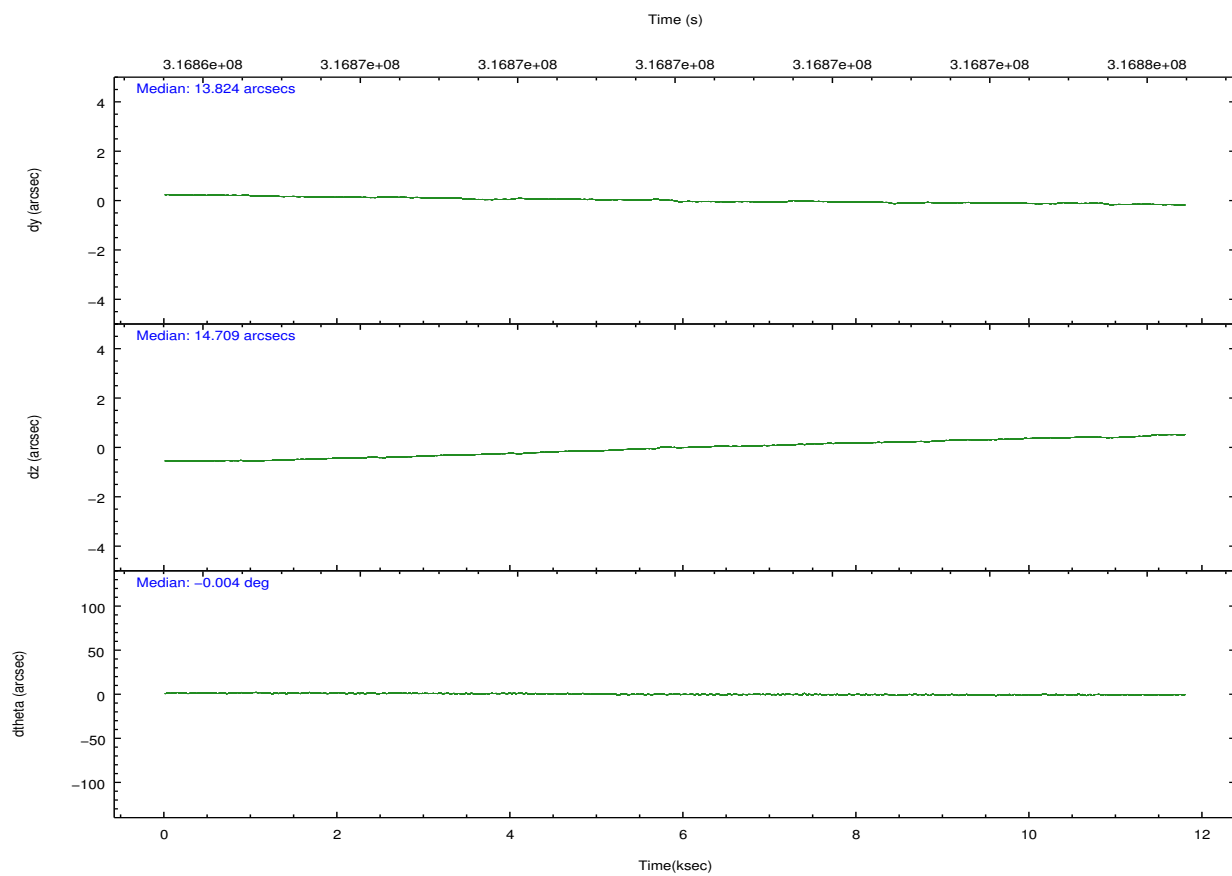
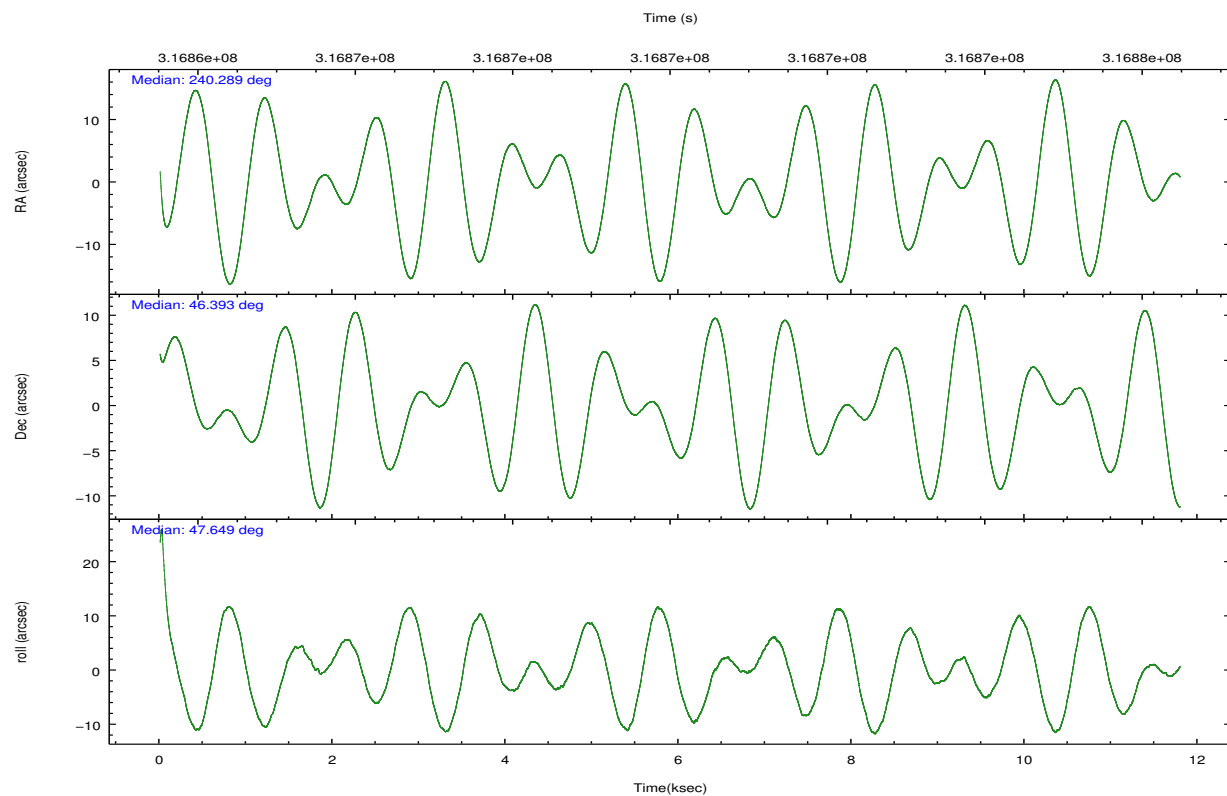


## 2.2 Compared Parameters

Parameter	Planned	Actual	Parameter	Planned	Actual
Instrument	ACIS	ACIS	Obspar format version number	7	7
Detector	ACIS-23678	ACIS-23678	Obspar file type	PREDICTED	ACTUAL
Grating	NONE	NONE	Obspar update status	NONE	UPDATED
Data mode	VFAINT	VFAINT	CCD I0 on	N	N
Observation mode	POINTING	POINTING	CCD I1 on	N	N
[deg] Pointing RA	240.281153	240.2891184002369	CCD I2 on	O1	Y
[deg] Pointing Dec	46.366278	46.39310702510127	CCD I3 on	O2	Y
[deg] Pointing Roll	47.504807	47.65568509852832	CCD S0 on	N	N
[mm] SIM focus pos	-0.684267	-0.6828225247311905	CCD S1 on	N	N
[mm] SIM defocus	0	0.001444936568705701	CCD S2 on	O4	Y
[mm] SIM translation stage pos	-190.132523	-190.1425803651734	CCD S3 on	Y	Y
[mm] SIM translation stage offset	0	0.01005778216563158	CCD S4 on	O3	Y
[s] Observation start time (MET)	316864265.184000	316863217.89232	CCD S5 on	N	N
Observation start date	2008-01-16T09:50:00	2008-01-16T09:33:37	Number of optional ACIS chips dropped	0	0
[s] Observation end time (MET)	316875900.184000	316876126.23045	On-chip summing requested	N	N
Observation end date	2008-01-16T13:03:55	2008-01-16T13:08:46	Subarray requested	NONE	NONE
Read mode	TIMED	TIMED	Alternating exposures requested	N	N
			[s] Primary exposure time	0.000000	3.1

## 2.3 Aspect



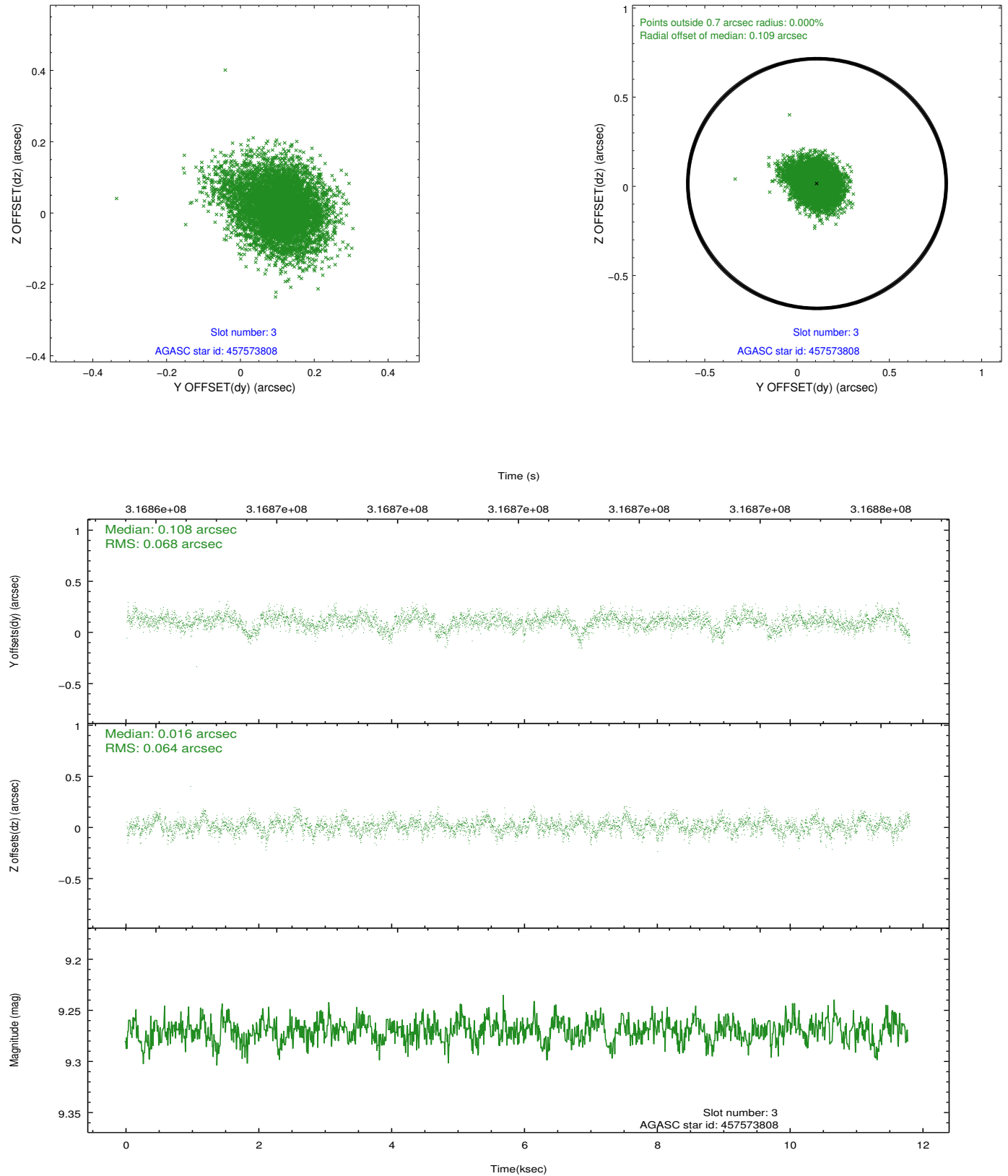


### Slot Statistics

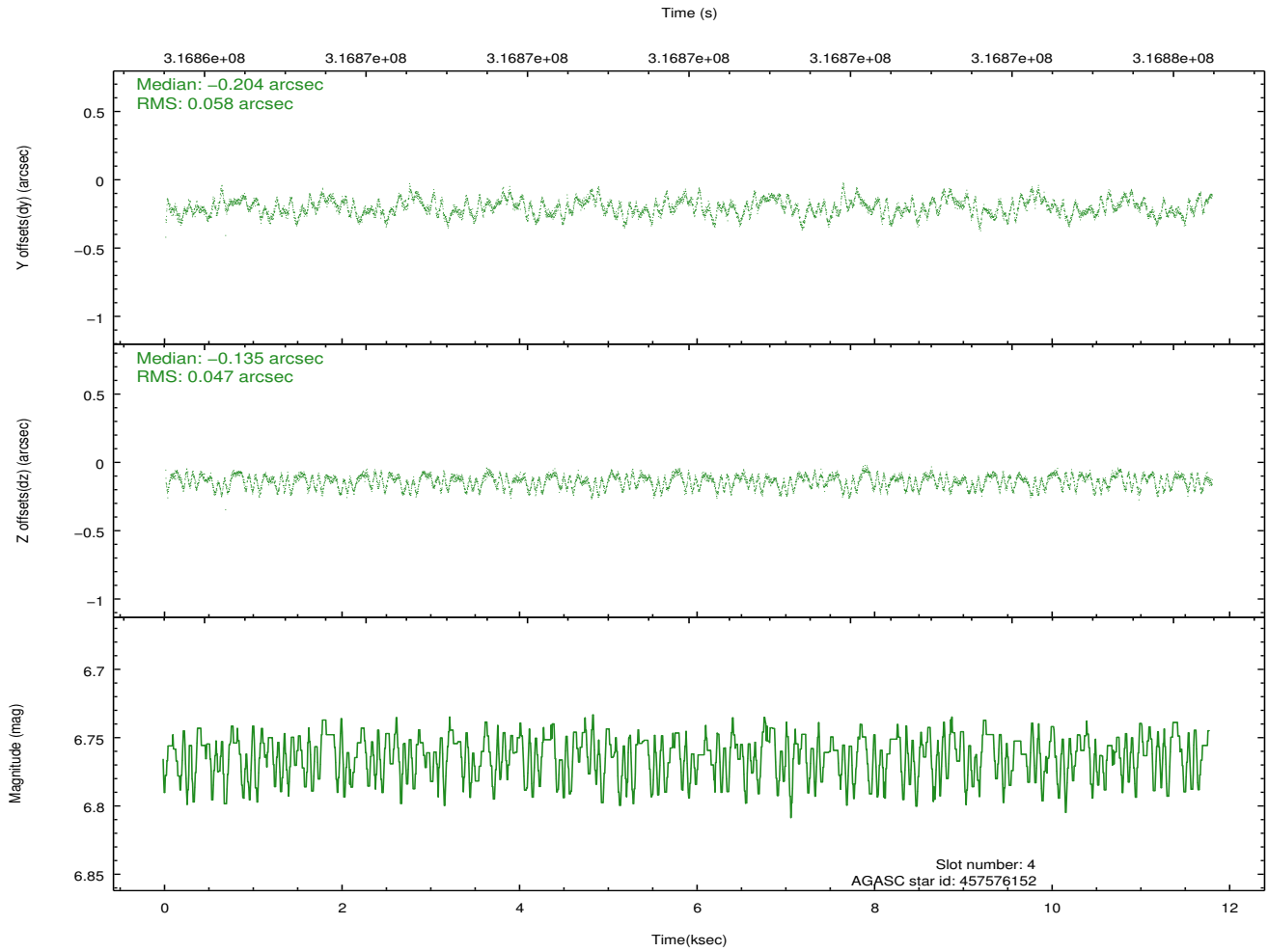
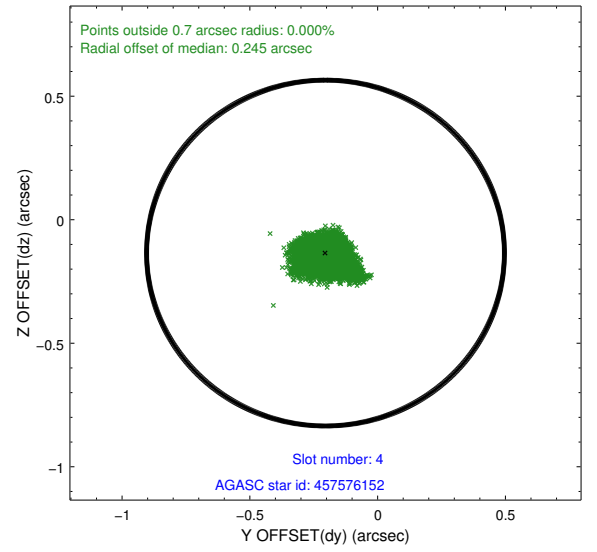
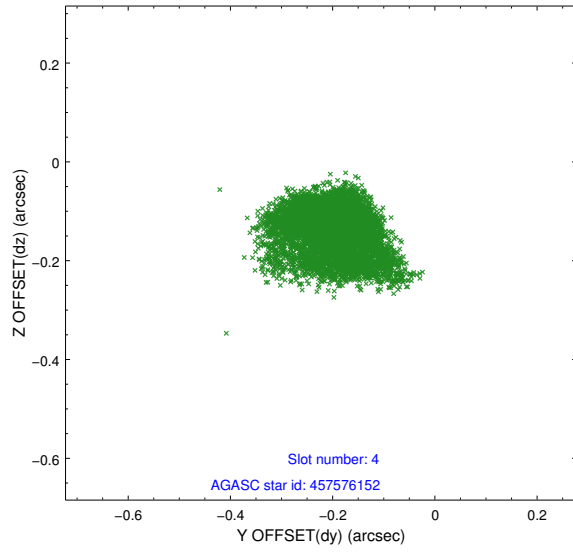
slot	status	id	mag	n_pts	med_dy	med_dz	dr1	dr2	ra	dec	mean_y	mean_z
0	FID	ACIS-S-2	7.09	2876	-0.068	-0.039	0.012	0.019	0.000000	0.000000	-766.83	-1736.03
1	FID	ACIS-S-4	7.19	2874	0.196	0.044	0.006	0.011	0.000000	0.000000	2146.50	172.11
2	FID	ACIS-S-5	7.22	2876	-0.159	0.004	0.010	0.016	0.000000	0.000000	-1819.23	166.20
3	GUIDE	457573808	9.27	5748	0.108	0.016	0.098	0.164	240.949355	46.476557	1417.41	-948.78
4	GUIDE	457576152	6.76	5752	-0.204	-0.135	0.079	0.128	240.385986	47.142638	2234.37	1698.74
5	GUIDE	457582632	9.41	5744	0.100	0.203	0.128	0.205	240.791377	45.829374	-556.59	-2246.23
6	GUIDE	457585176	9.05	5744	0.031	0.063	0.092	0.144	240.600604	46.423754	689.59	-443.97
7	GUIDE	457574424	9.53	5738	-0.028	-0.148	0.114	0.178	240.424618	47.184820	2410.21	1732.00

## 2.4 Star Slots

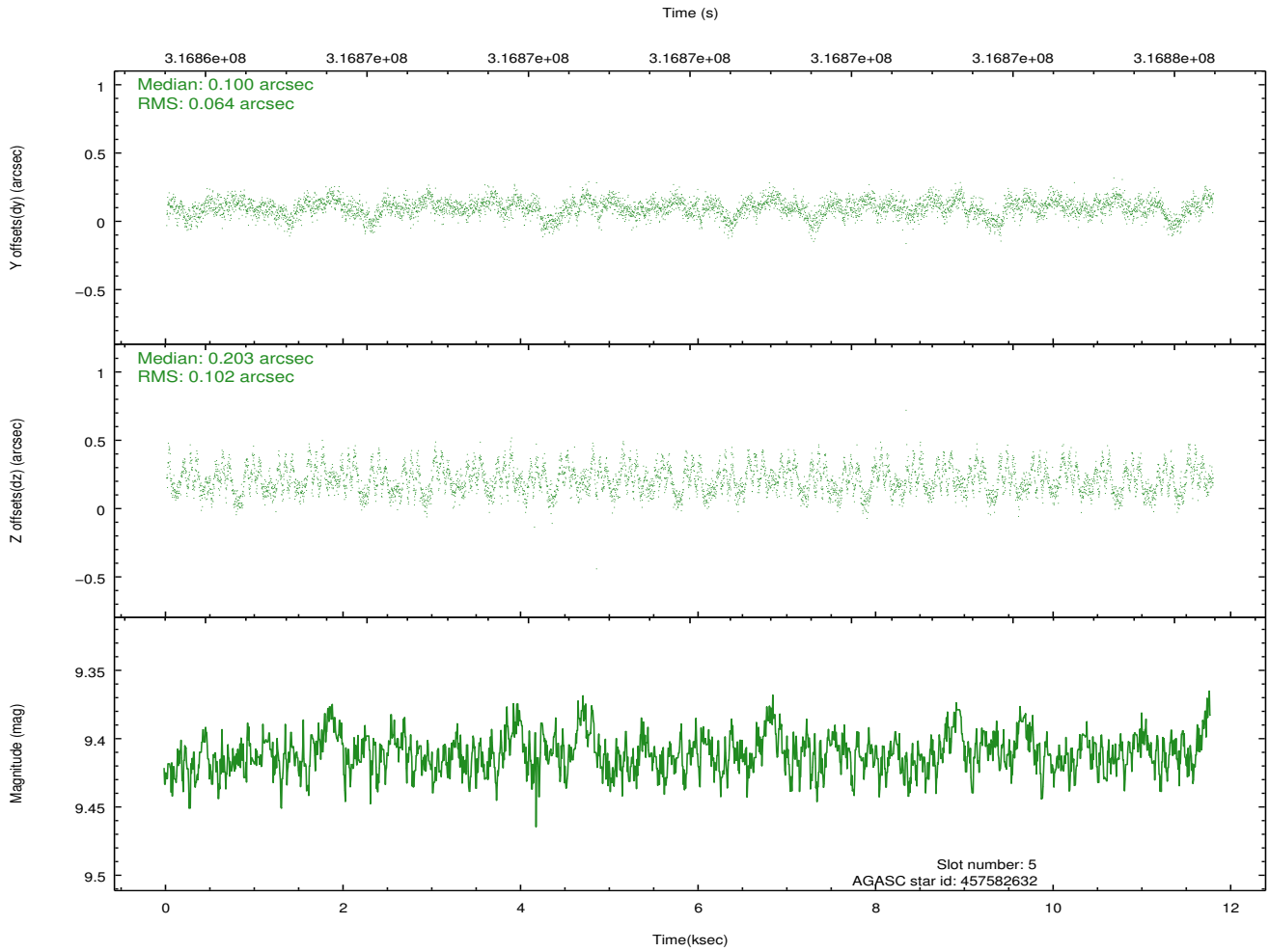
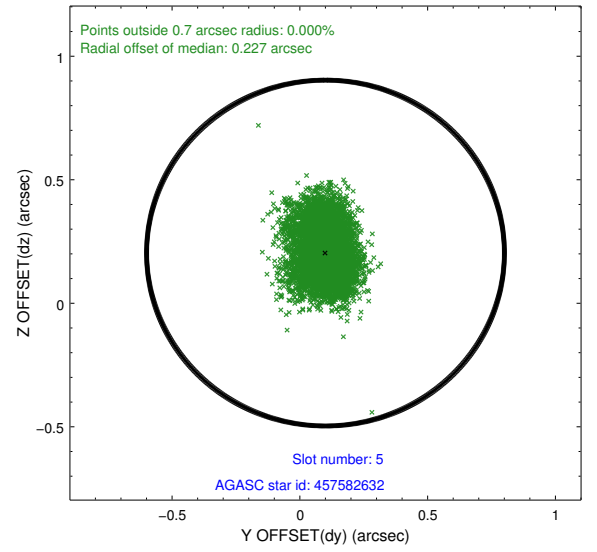
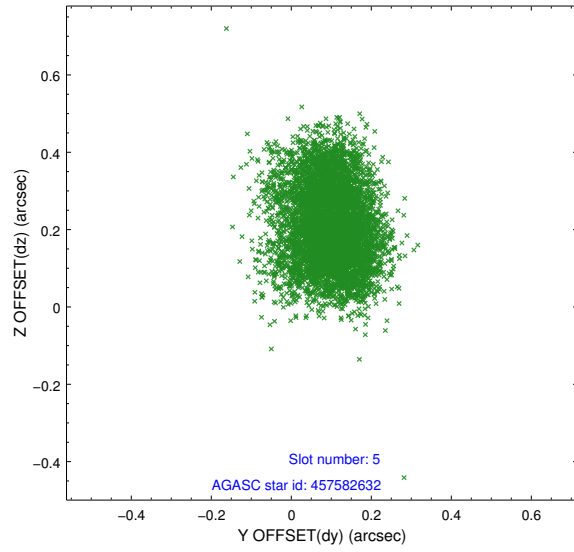
### 2.4.1 Slot 3



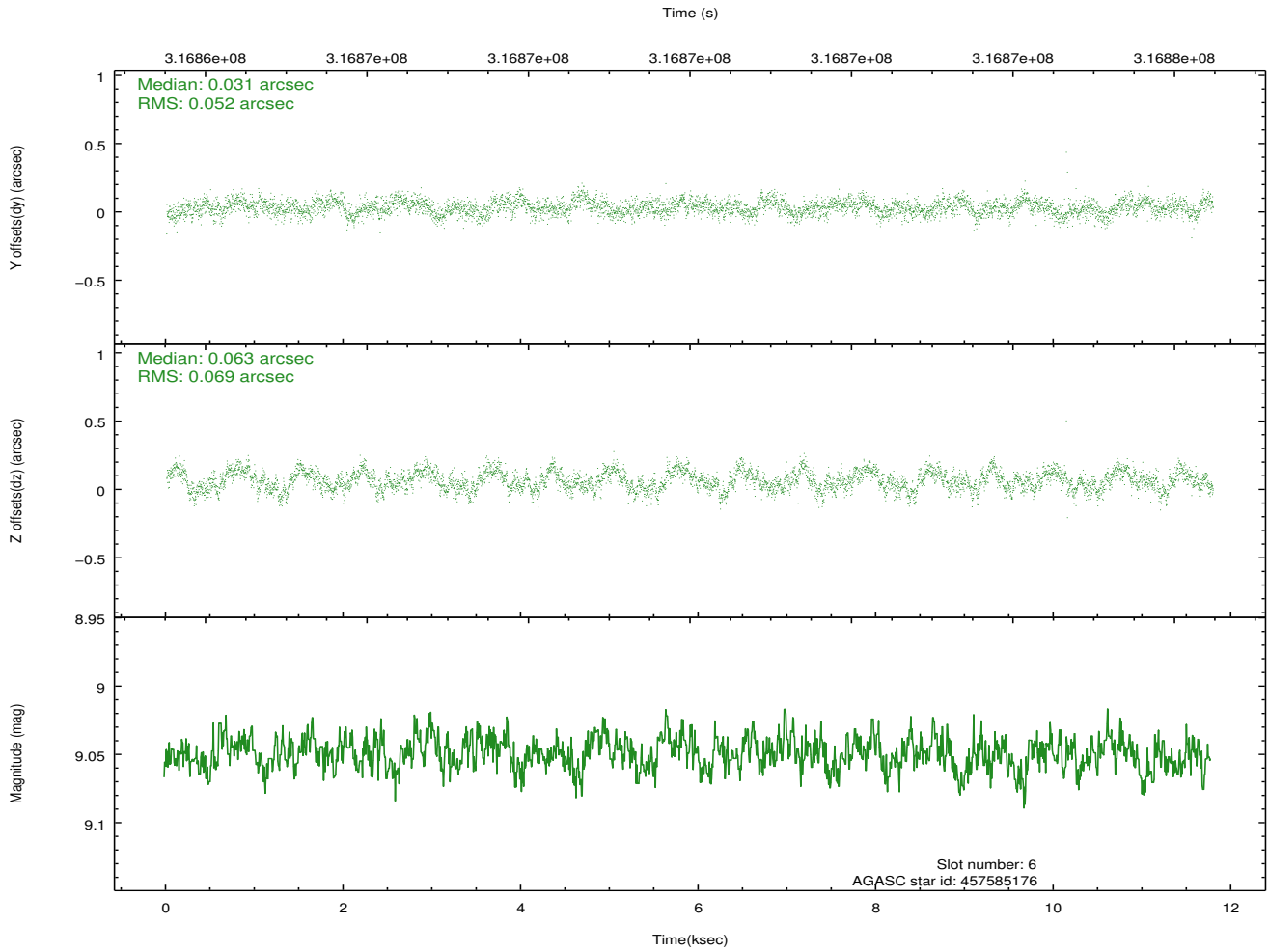
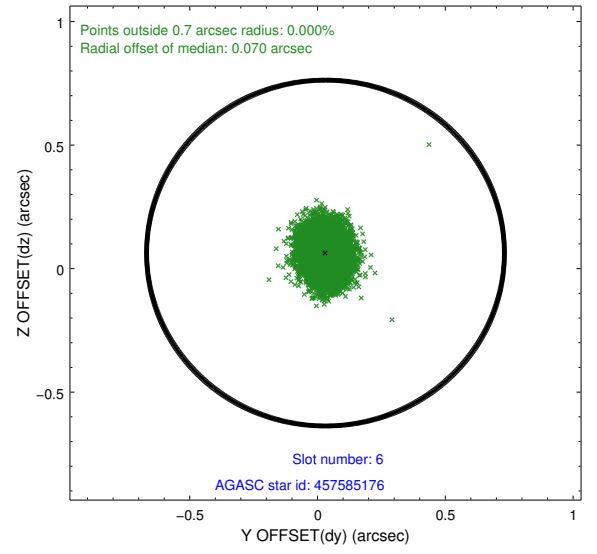
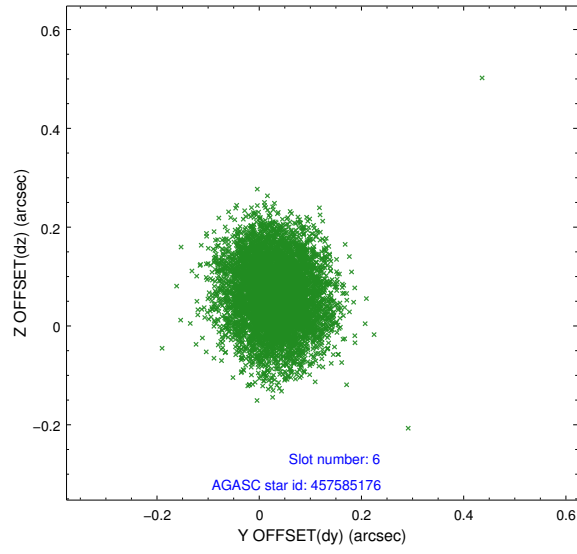
## 2.4.2 Slot 4



### 2.4.3 Slot 5

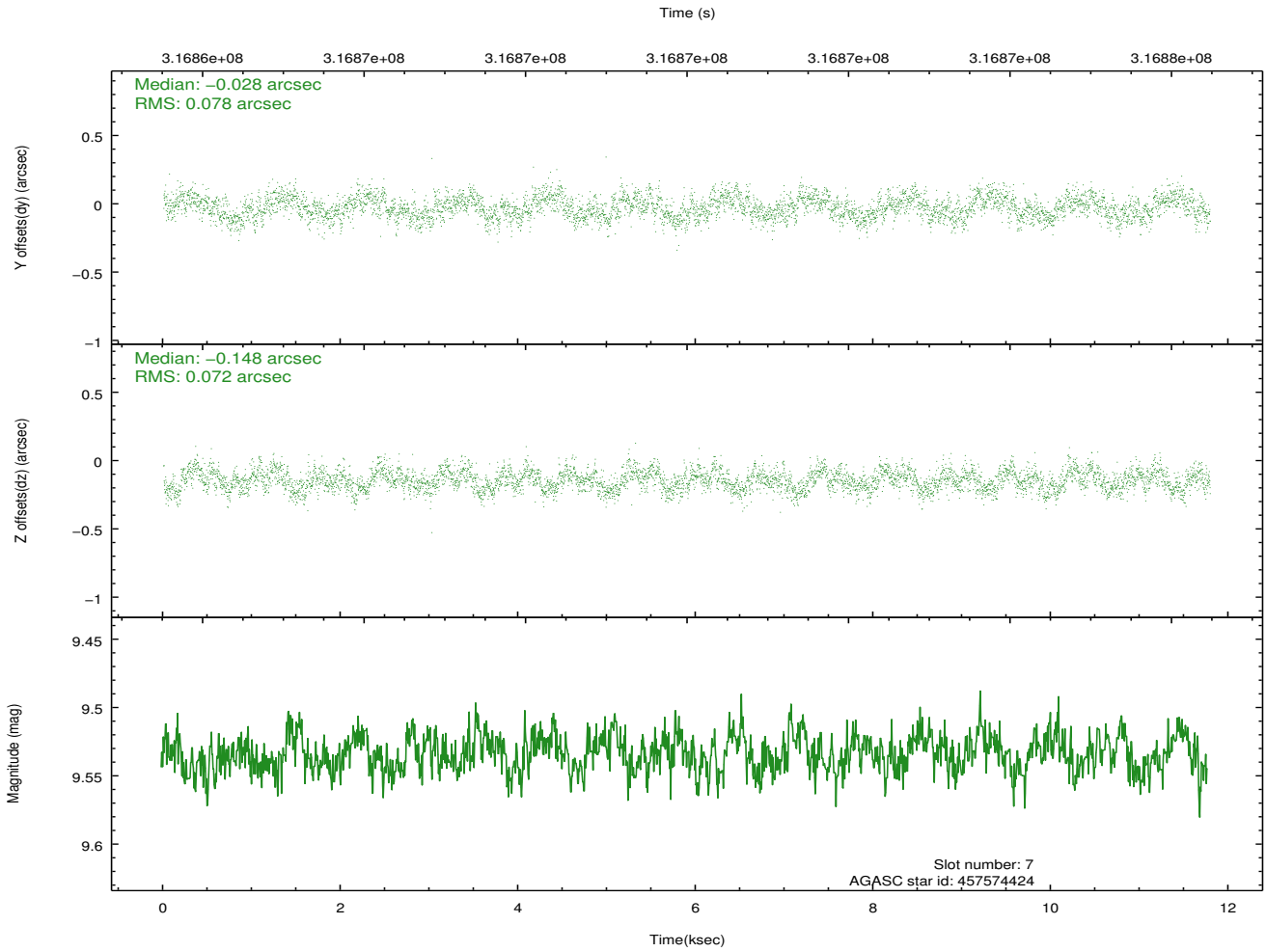
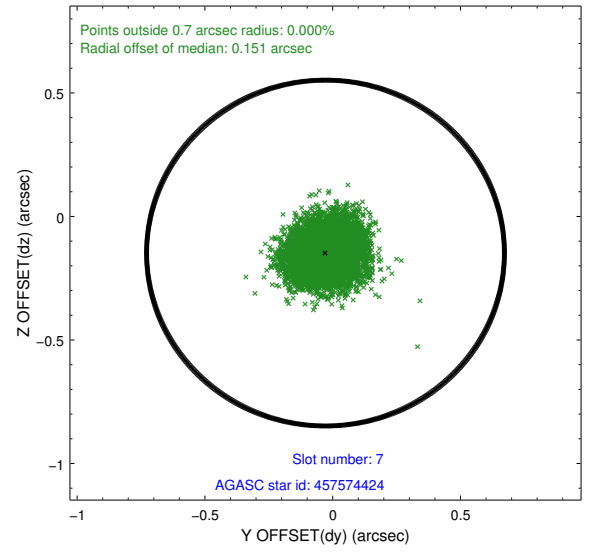
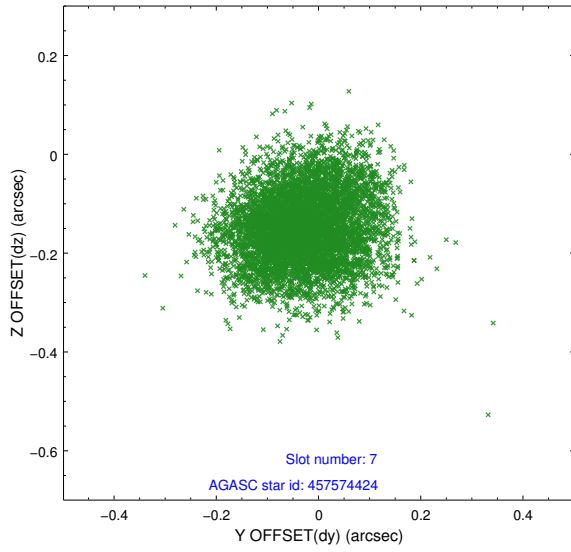


## 2.4.4 Slot 6



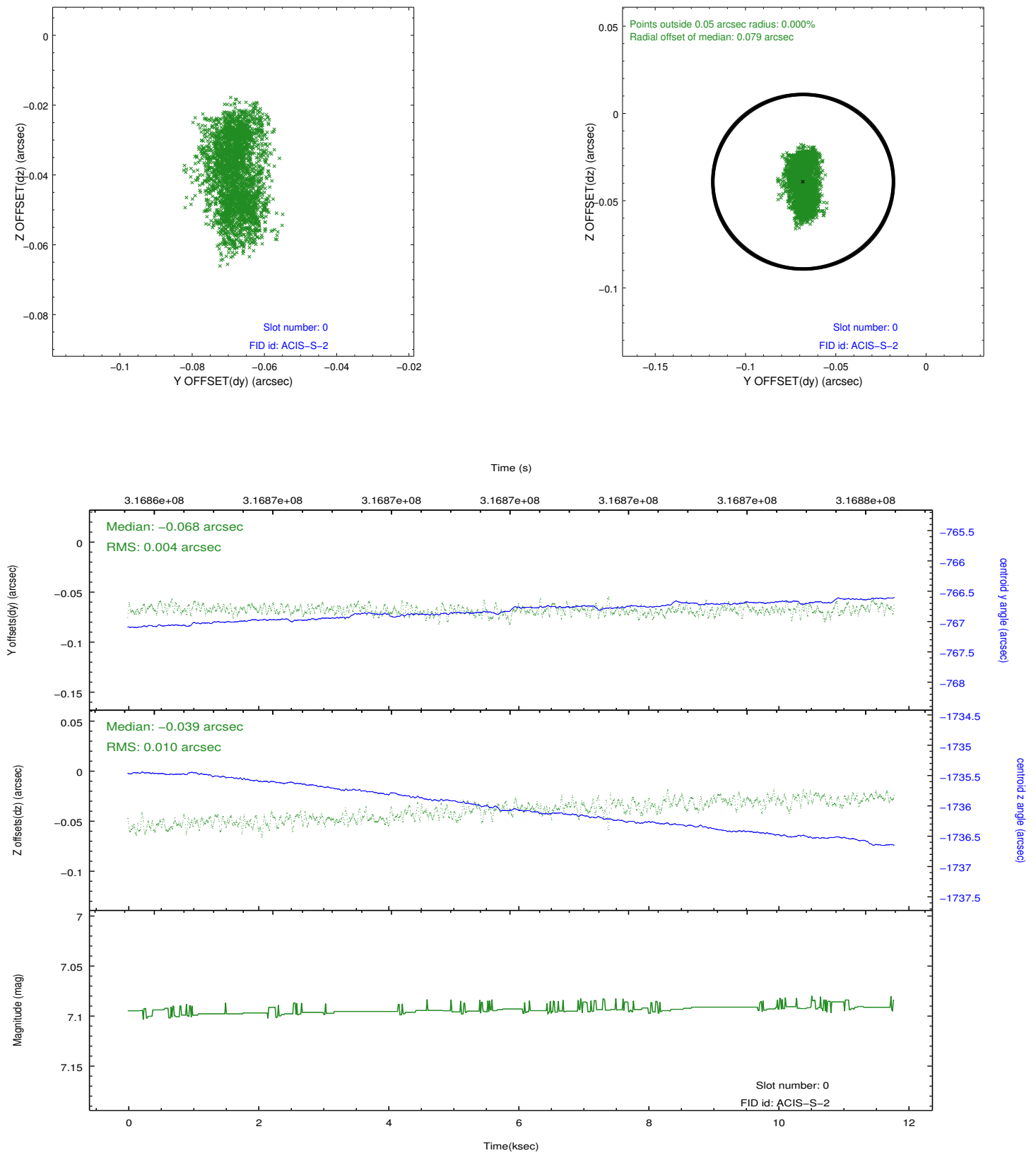


## 2.4.5 Slot 7

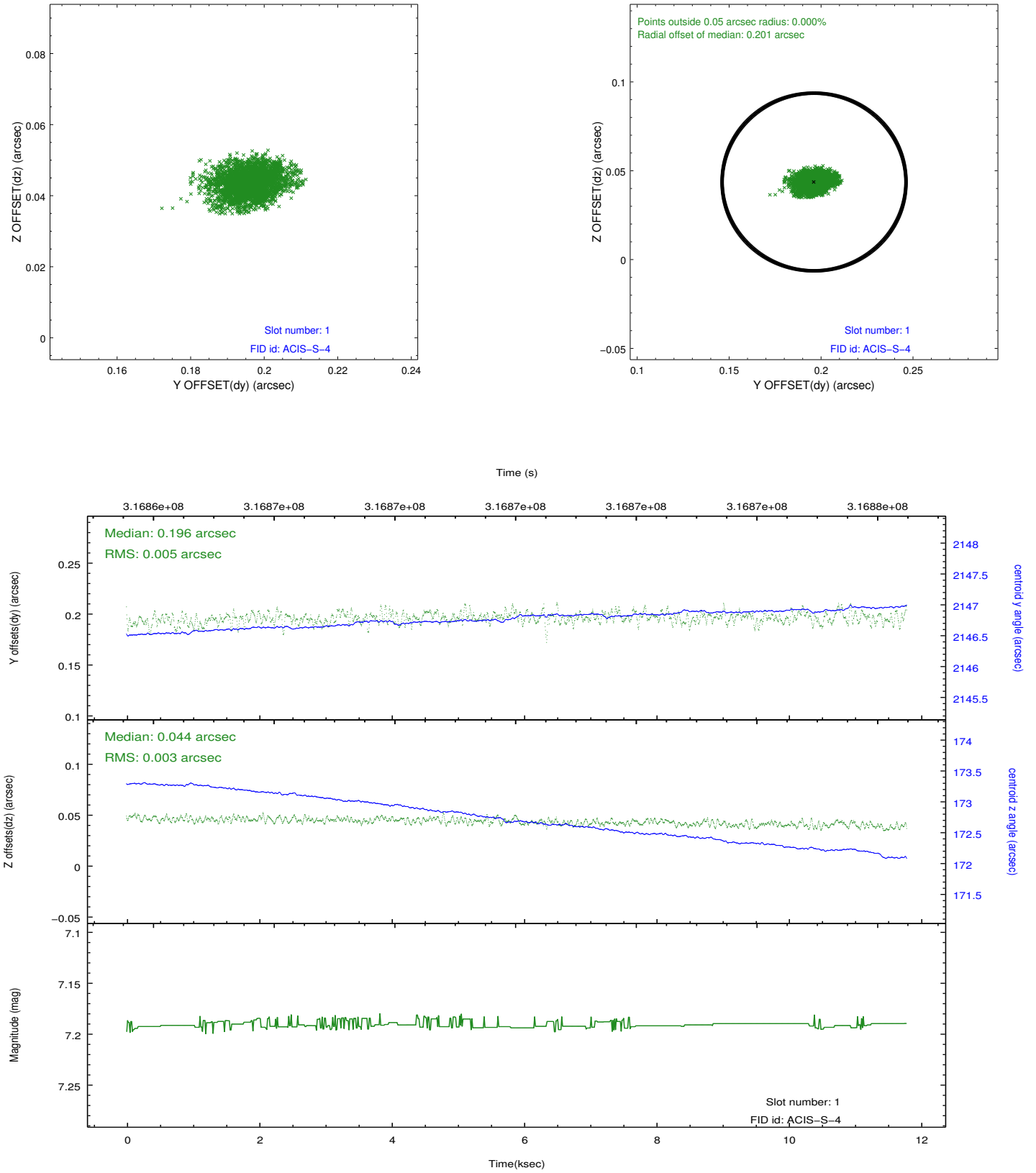


## 2.5 FID Slots

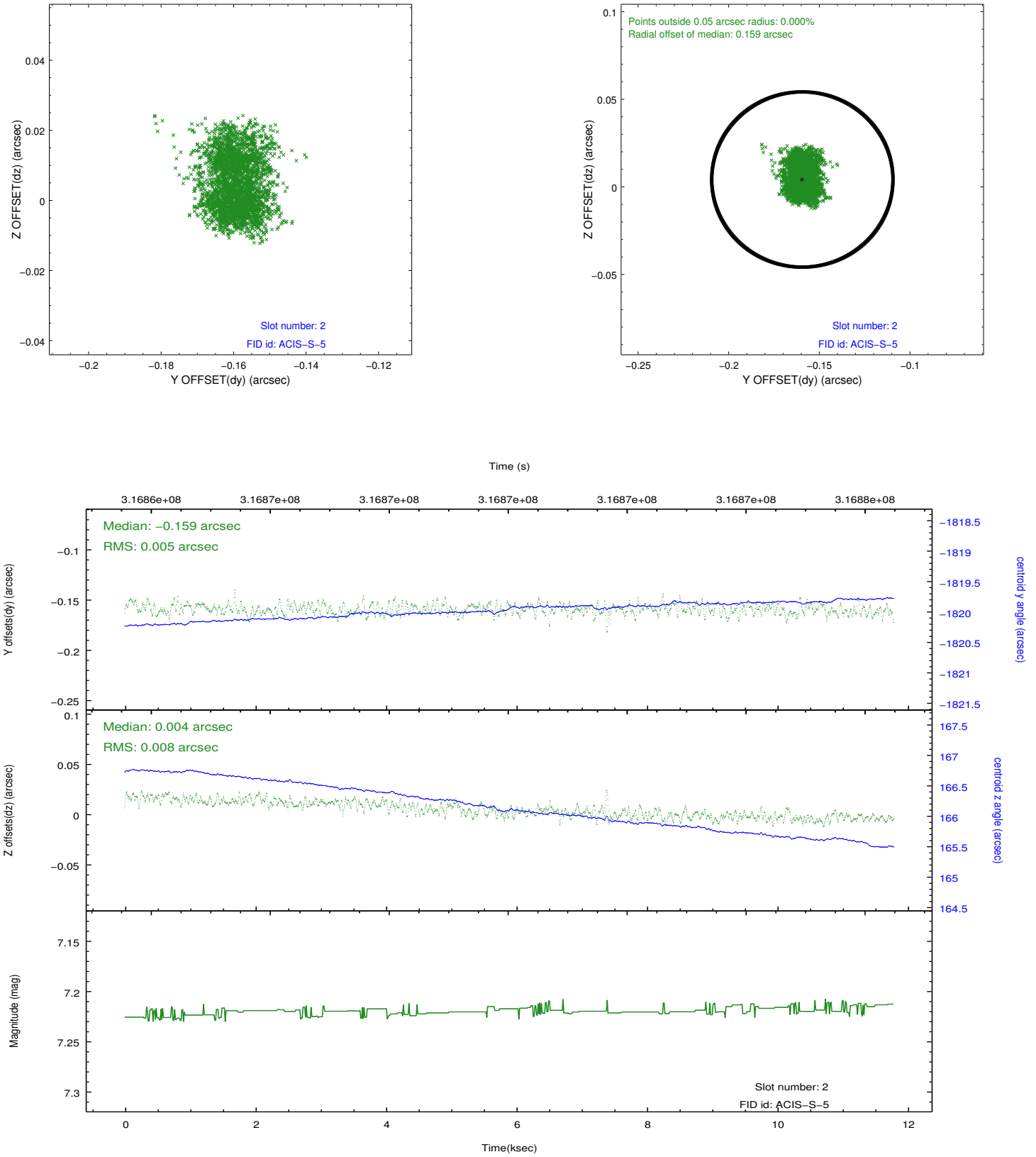
### 2.5.1 Slot 0



## 2.5.2 Slot 1



### 2.5.3 Slot 2



# A Summary

## A.1 Status

V&V Scientist	Jen Lauer
V&V Date (YYYY-MM-DD)	2012.05.10
V&V Edition	1
V&V Disposition and Status	OK
V&V Charge Time	11.7831

## A.2 Comments

Joint proposal with NRAO.